

1 Quantifying the impact of immune history and variant on SARS-CoV-2 viral kinetics and 2 infection rebound: a retrospective cohort study

3 4 Supplementary methods

5 6 Logistic regression models

7 Model fitting.

8 We fitted Bayesian logistic regression models for the probability of an individual having Ct value
9 <30 on each day post detection using the *brms* package version 2.14.4. Models were run on the
10 Harvard FAS Research Computing cluster using R version 4.0.2. For each model, we ran 4 chains
11 for 2000 iterations each. Weakly informative priors (normal distributions with means of 0 and
12 standard deviations of 10) were used for all model parameters. We assessed convergence based
13 on all estimated parameters having a Gelman R-hat statistic less than 1.1.

14 15 Viral kinetics model

16 Statistical analysis.

17 Following previously described methods,^{1,2} we used a Bayesian hierarchical model to estimate
18 the proliferation duration, clearance duration, and peak viral concentration for acute SARS-CoV-
19 2 infections, stratified by variant (Omicron, Delta, Other), immune status (vaccination history,
20 including unexposed, 1-2 doses, or boosted; and antibody titer, including unexposed, titer ≤ 250
21 AU, and titer > 250 AU) and age (groups of <30, 30-50, and >50 years old). The model describes
22 the log₁₀ viral concentration during an acute infection using a continuous piecewise-linear curve
23 with control points that specify the time of acute infection onset, the time and magnitude of peak
24 viral concentration, and the time of acute infection clearance. The assumption of piecewise
25 linearity is equivalent to assuming exponential viral growth during the proliferation period followed
26 by exponential viral decay during the clearance period. The control points were inferred using the
27 Hamiltonian Monte Carlo algorithm as implemented in Stan (version 2.24).³ We used priors
28 informed by a previous analyses.^{1,2} Data and code are available online.

29 30 Model fitting.

31 To restrict to a set of well-observed acute infections for model fitting, we first removed any
32 sequences of 3 or more consecutive negative tests (Ct = 40) from each acute infection to avoid
33 overfitting to these trivial values. We kept only acute infections with at least one Ct value < 32 and
34 at least 3 Ct values < 40 (the limit of detection).

35
36 We constructed a piecewise-linear regression model to estimate the peak Ct value, the time from
37 infection onset to peak (*i.e.* the duration of the proliferation stage), and the time from peak to
38 infection resolution (*i.e.* the duration of the clearance stage). This is represented by the equation

$$E[Ct(t)] = \begin{cases} \text{l.o.d} - \frac{\delta}{t_p - t_o}(t - t_o) & t \leq t_p \\ \text{l.o.d} - \delta + \frac{\delta}{t_r - t_p}(t - t_p) & t > t_p \end{cases}$$

39
40
41 Here, $E[Ct(t)]$ represents the expected value of the Ct at time t , “l.o.d” represents the RT-qPCR
42 limit of detection, δ is the absolute difference in Ct between the limit of detection and the peak
43 (lowest) Ct, and t_o , t_p , and t_r are the onset, peak, and recovery times, respectively.

44
45 Before fitting, we re-parametrized the model using the following definitions:

- 46
47 • $\Delta Ct(t) = \text{l.o.d} - Ct(t)$ is the difference between the limit of detection and the observed Ct
48 value at time t .
- 49 • $\omega_p = t_p - t_o$ is the duration of the proliferation stage.

50 • $\omega_r = t_r - t_p$ is the duration of the clearance stage.

51

52 We next characterized the likelihood of observing a given $\Delta Ct(t)$ using the following mixture
53 model:

54

$$55 L(\Delta Ct(t) = x | \delta, t_p, \omega_p, \omega_r) = (1 - \lambda) \left[f_N(x | E[\Delta Ct(t)], \sigma(t)) + I_{lod} F_N(0 | E[\Delta Ct(t)], \sigma(t)) \right] + \lambda f_{Exp}(x | \kappa)$$

56

57 The left-hand side of the equation denotes the likelihood (L) that the observed viral load, as
58 measured by Ct deviation from the limit of detection ($\Delta Ct(t)$), is equal to some quantity x given the
59 model parameters δ (peak viral load), t_p (time of peak viral load), ω_p (proliferation time), and ω_r
60 (clearance time). This likelihood is equal to the sum of two main components: the likelihood that
61 the observed value was generated by the modeled viral kinetic process, denoted by the bracketed
62 term preceded by a $(1-\lambda)$; and the likelihood that the observed value was a false negative, denoted
63 by the term preceded by a λ . In the bracketed term representing the modeled viral kinetic process,
64 $f_N(x | E[\Delta Ct(t)], \sigma(t))$ represents the Normal PDF evaluated at x with mean $E[\Delta Ct(t)]$ (generated by
65 the model equations above) and observation noise $\sigma(t)$. $F_N(0 | E[\Delta Ct(t)], \sigma(t))$ is the Normal CDF
66 evaluated at 0 with the same mean and standard deviation. This represents the scenario where
67 the true viral load goes below the limit of detection, so that the observation sits at the limit of
68 detection. I_{lod} is an indicator function that is 1 if $\Delta Ct(t) = 0$ and 0 otherwise; this way, the F_N term
69 acts as a point mass concentrated at $\Delta Ct(t) = 0$. Last, $f_{Exp}(x | \kappa)$ is the Exponential PDF evaluated
70 at x with rate κ . We set $\kappa = \log(10)$ so that 90% of the mass of the distribution sat below 1 Ct unit
71 and 99% of the distribution sat below 2 Ct units, ensuring that the distribution captures values
72 distributed at or near the limit of detection. We did not estimate values for λ or the exponential
73 rate because they were not of interest in this study; we simply needed to include them to account
74 for some small probability mass that persisted near the limit of detection to allow for the possibility
75 of false negatives. A schematic of the likelihood function is depicted in **Supplementary Figure**
76 **17**.

77

78 We used a hierarchical structure with a non-centered parameterization to describe the
79 distributions of ω_p , ω_r , and δ for each person:

80

$$81 \omega_p[i] = \text{Exp}[\mu_{\omega_p} + \zeta_{\omega_p}^i + \sigma_{\omega_p} N^i_{\omega_p}] \omega_{\omega_p}^*$$

$$82 \omega_r[i] = \text{Exp}[\mu_{\omega_r} + \zeta_{\omega_r}^i + \sigma_{\omega_r} N^i_{\omega_r}] \omega_{\omega_r}^*$$

$$83 \delta[i] = \text{Exp}[\mu_{\delta} + \zeta_{\delta}^i + \sigma_{\delta} N^i_{\delta}] \delta^*$$

84

85 Here, $\omega_{\omega_p}^*$, $\omega_{\omega_r}^*$, and δ^* are user-defined estimated values for the means of ω_p , ω_r , and δ , so that
86 the exponential terms represent an adjustment factor relative to that midpoint defined by μ (a
87 shared adjustment factor for the entire population), ζ^i (an adjustment factor shared among
88 individuals of a given variant/immune category), and σ (a shared standard deviation for the entire
89 population). The N^i terms represent individual-level random effects. The prior distributions for the
90 μ , ζ , and σ terms were all Normal(0, 0.25) (with σ truncated to have support on the positive reals).
91 These prior distributions define LogNormal adjustment factors that have ~99% of their probability
92 mass between 0.5 and 2, so that the prior distributions for ω_p , ω_r , and δ cover roughly half to twice
93 their prior estimated midpoint values.

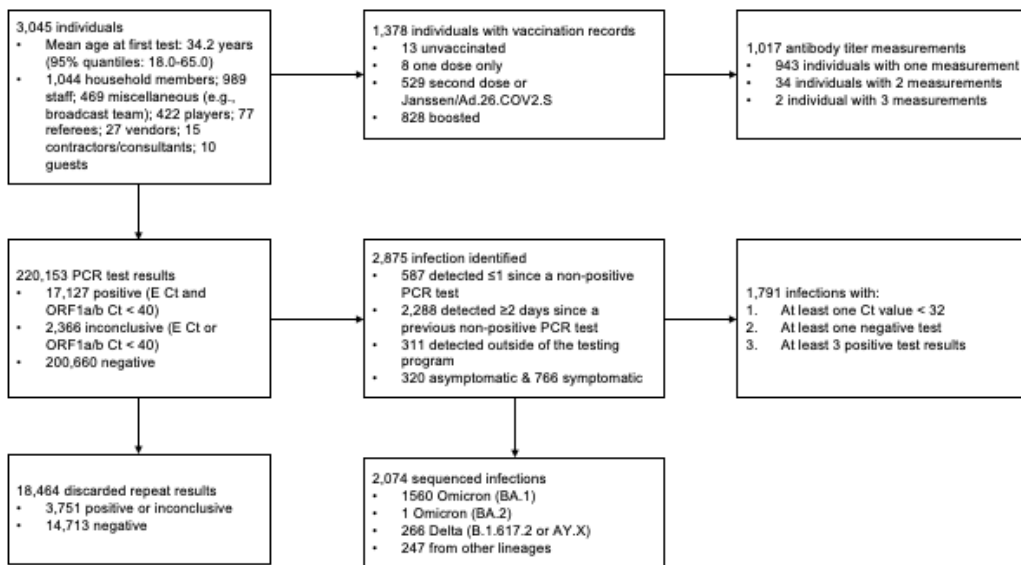
94

95 We used a Hamiltonian Monte Carlo fitting procedure implemented in Stan (version 2.24) and R
96 (version 3.6.2) to estimate the parameters. We ran four MCMC chains for 2,000 iterations each
97 with a target average proposal acceptance probability of 0.8. The first half of each chain was
98 discarded as the warm-up. The Gelman R-hat statistic was less than 1.1 for all parameters. This

99 indicated good overall mixing of the chains. There were no divergent iterations, indicating good
100 exploration of the parameter space.

101 **References**

- 102 1. Kissler, S. M. *et al.* Viral dynamics of acute SARS-CoV-2 infection and applications to
103 diagnostic and public health strategies. *PLoS Biol.* **19**, e3001333 (2021).
104 2. Kissler, S. M. *et al.* Viral Dynamics of SARS-CoV-2 Variants in Vaccinated and
105 Unvaccinated Persons. *N. Engl. J. Med.* **385**, 2489–2491 (2021).
106 3. Carpenter, B. *et al.* Stan: A Probabilistic Programming Language. *J. Stat. Softw.* **76**, 1–32
107 (2017).
108



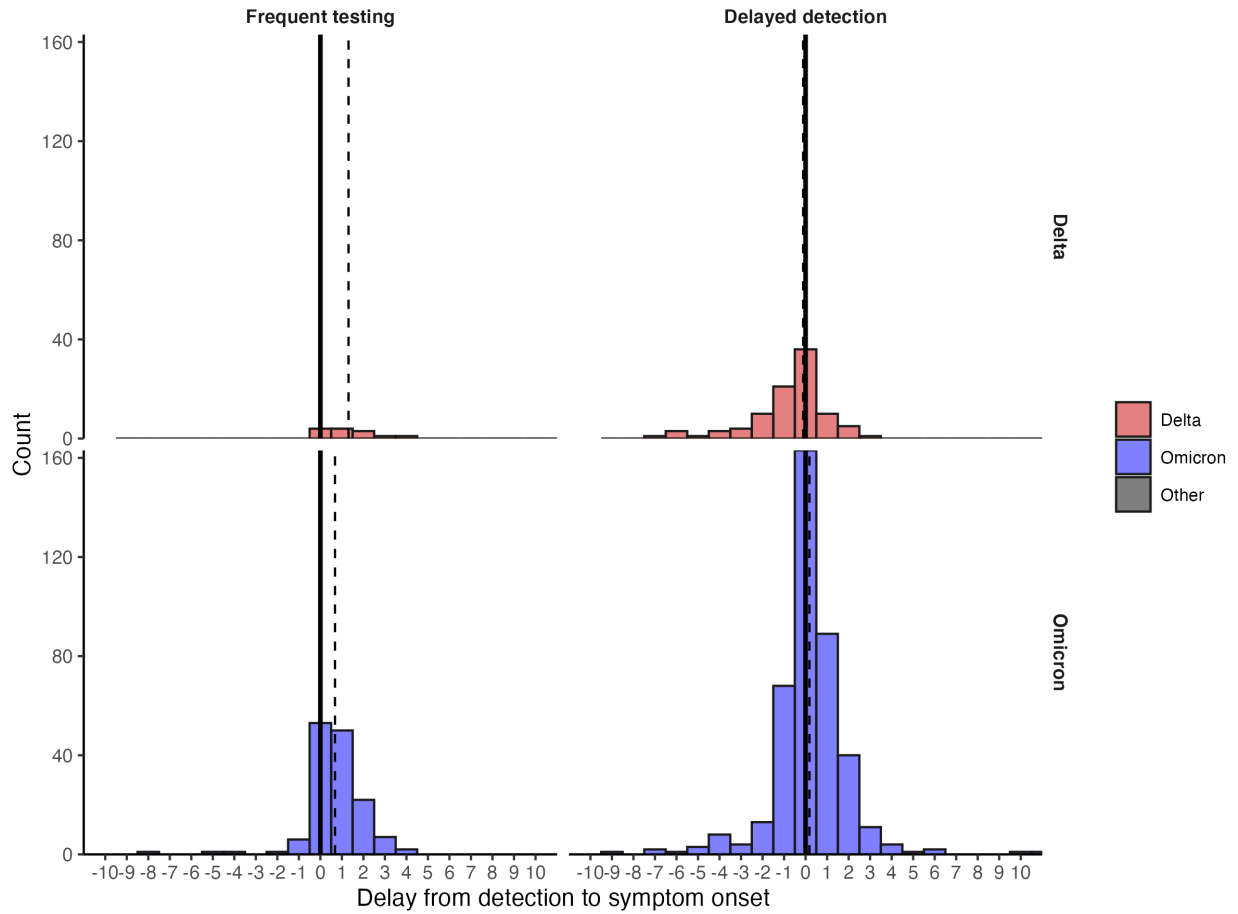
110

111

112

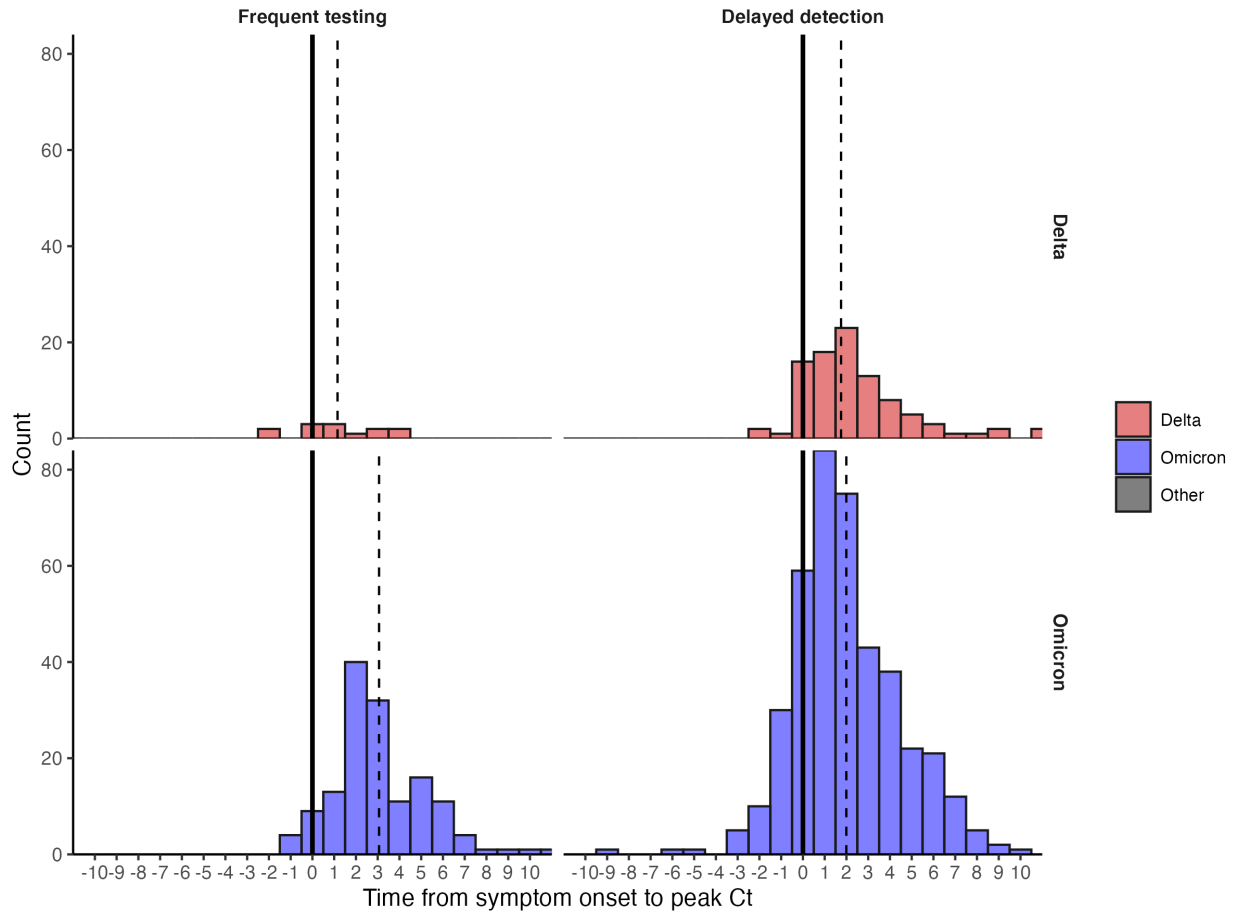
113

Figure S1. Summary of cohort. Top row describes cohort demographics and data on immune histories. Middle row describes infection data. Bottom row provides additional information on the infection data.



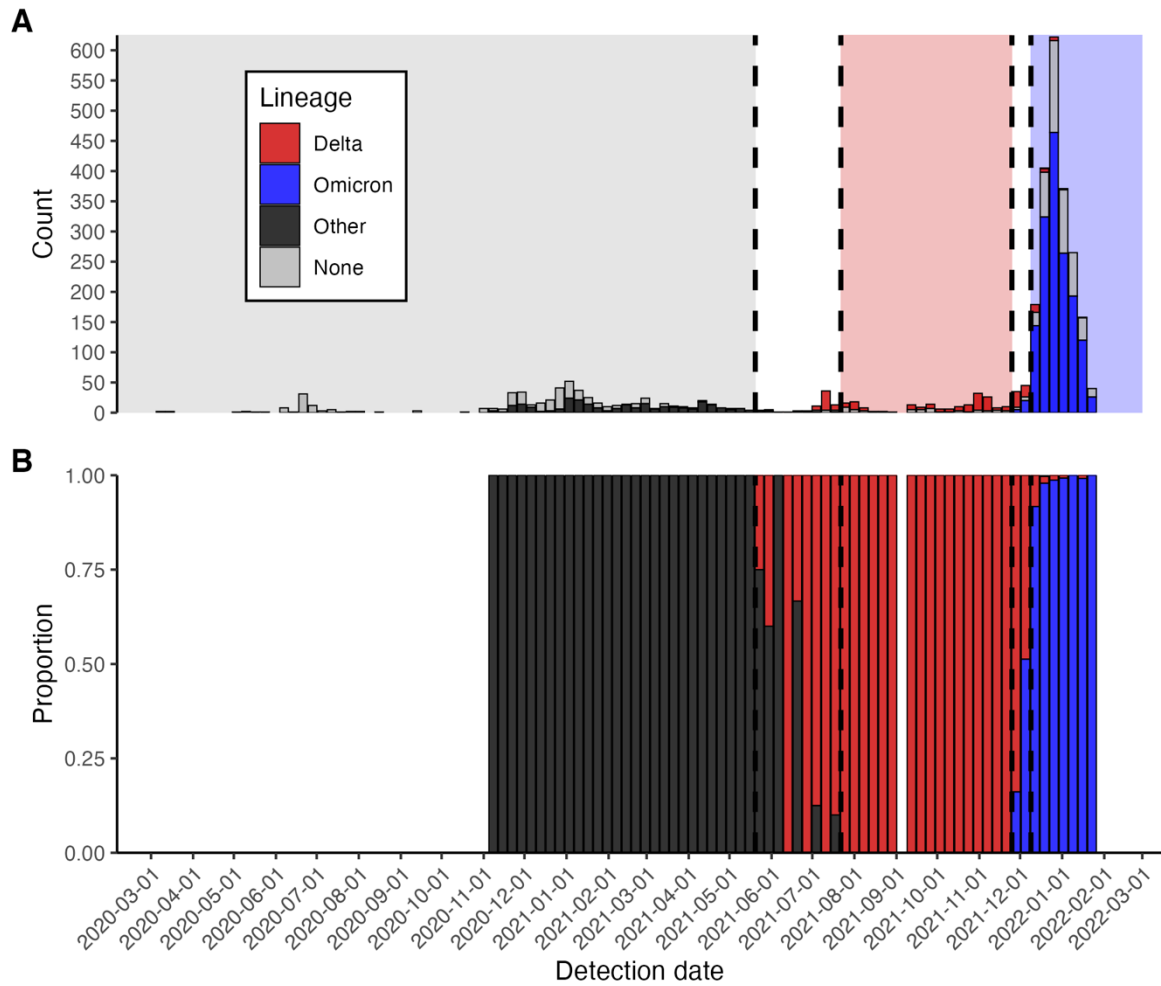
114
 115
 116
 117
 118
 119

Figure S2. Distribution of delays from detection to symptom onset among individuals with known symptom status. Dashed lines mark the median delay between detection and symptom onset. Solid lines mark the day of detection (0).



120
121
122
123

Figure S3. Distribution of delays from symptom onset to peak Ct values among individuals with known symptom status. Dashed lines mark the median delay between detection and symptom onset. Solid lines mark the day of symptom onset (0).



124
125
126
127

Figure S4. (A) Frequency of sequenced and unsequenced detected infections over time by week. Vertical dashed lines and shaded backgrounds demarcate periods of variant dominance. (B) Proportion of sequenced infections attributable to Delta, Omicron or other lineages.

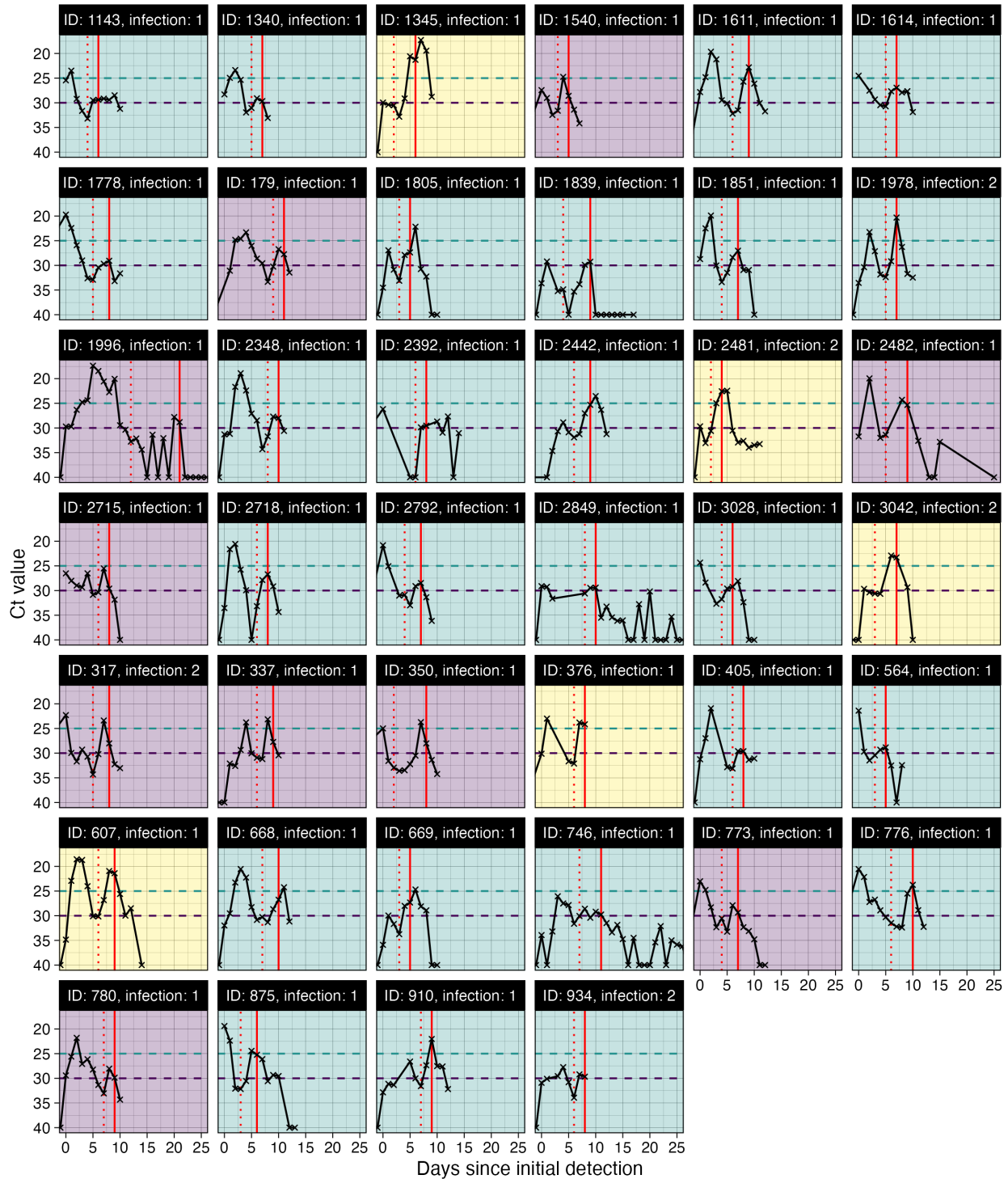
128 **Table S1.** Number of identified rebounds stratified by variant, either confirmed through
 129 sequencing or assumed based on detection date. Rebounds are defined here as any trajectory
 130 with an initial Ct value <30, followed by a sequence of two or more consecutive negative tests or
 131 tests with Ct value ≥30, and subsequently followed by two or more consecutive tests with Ct
 132 value <30.
 133

Lineage	Rebounds	Total infections	Percentage rebounded
Omicron	36	877	4.10%
Delta	1	178	0.562%
Other	3	279	1.08%

134
 135
 136 **Table S2.** Number of identified rebounds stratified by vaccination status. Rebounds are defined
 137 here as any trajectory with an initial Ct value <30, followed by a sequence of two or more
 138 consecutive negative tests or tests with Ct value ≥30, and subsequently followed by two or more
 139 consecutive tests with Ct value <30.
 140

Vaccination status	Rebounds	Total infections	Percentage rebounded
Boosted	32	494	6.48%
No record	5	398	1.26%
Second dose	3	323	0.929%
Unvaccinated	2	159	1.26%

141



Rebound definition 2 x Ct < 30 2 x Ct < 30 and decrease by 2+ cycles 2 x Ct < 25

142

143 **Supplementary Figure S5. All viral trajectories classified as rebound shown in Figure 1B.**

144 Subplots are colored by the most stringent definition for rebound. To be included here,

145 individuals must have 2+ consecutive days of Ct ≥ 30 after an initial Ct < 30. The vertical red

146 dotted line marks this initial clearance time. Trajectories are then classified as rebounds

147 following either two consecutive tests with $Ct < 30$ (purple), two consecutive tests with $Ct < 30$ but
148 with at least a 2 Ct decrease (green), or two consecutive tests with $Ct < 25$ (yellow). The vertical
149 red line marks the timing of rebound detection. The horizontal dashed lines show the different Ct
150 value thresholds for rebound classification. Panels are labeled by arbitrary person ID and
151 infection number.

152 **Table S3.** Comparison of linear logistic regression models predicting probability of Ct<30 on
 153 each day since detection among individuals in the frequent testing group. Models are ranked
 154 based on their expected log pointwise predictive density (ELPD), where a lower ELPD implies
 155 better prediction accuracy. Model weight refers to the weight of each model in a Bayesian Model
 156 Averaging analysis, where a higher value implies a greater contribution to model prediction
 157 when combining multiple models. AUC = area under the curve.
 158

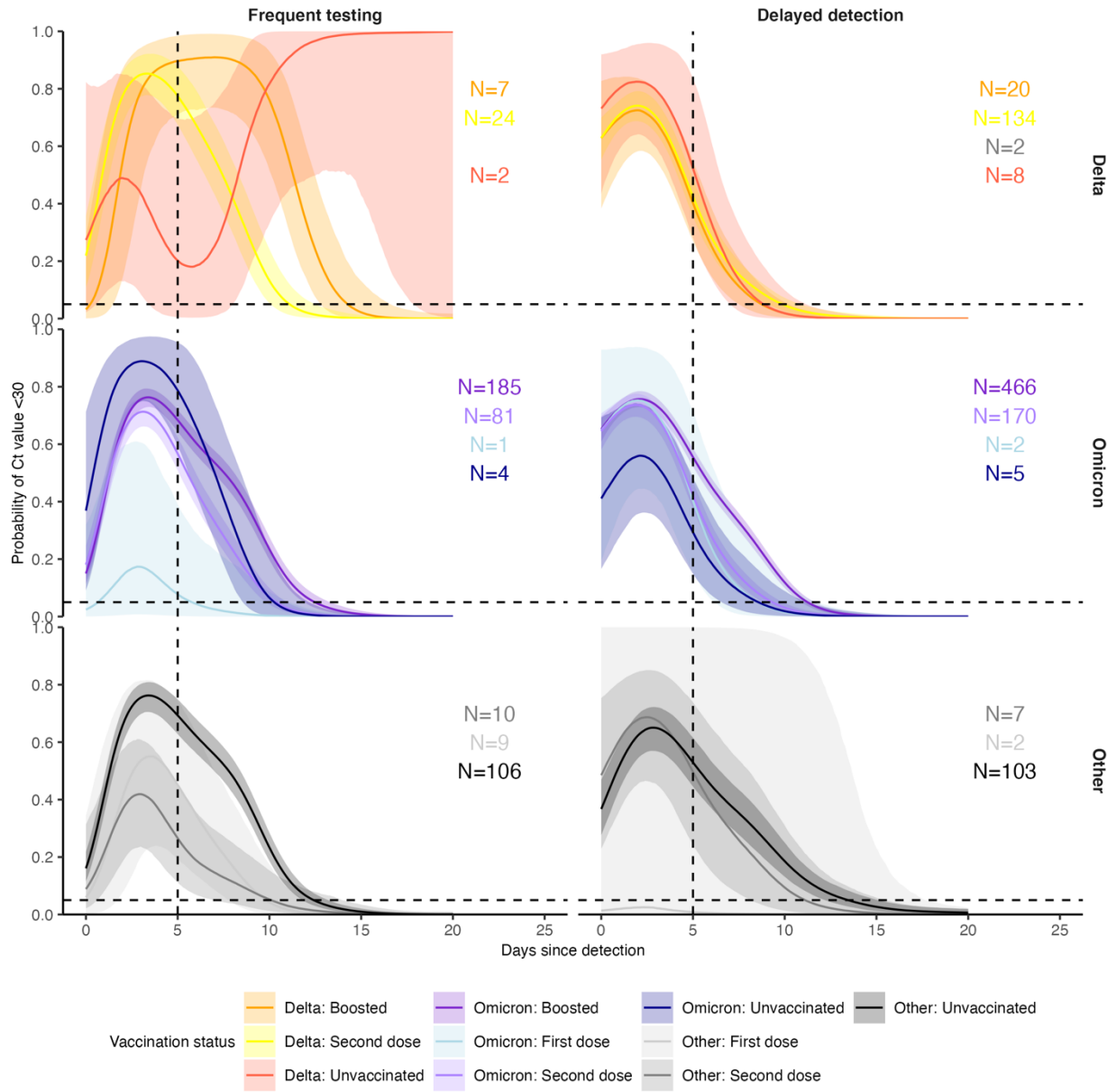
Model	ELPD difference	SE difference	Model weight	AUC	Classification accuracy	Accuracy (>=30)	Accuracy (<30)
Cumulative number of exposures and lineage	0.000	0.000	0.189	0.900	0.828	0.894	0.637
Days since previous exposure and lineage	-6.053	11.613	0.281	0.899	0.826	0.892	0.634
Vaccination status and lineage	-6.907	11.836	0.292	0.899	0.826	0.887	0.649
Cumulative number of exposures	-24.622	8.645	0.237	0.895	0.824	0.898	0.609
Vaccination status	-43.428	13.353	0.000	0.892	0.821	0.888	0.626
Days since previous exposure	-44.910	13.731	0.001	0.893	0.821	0.890	0.619
Lineage	-74.343	12.956	0.000	0.889	0.819	0.892	0.607
Baseline	-80.956	14.080	0.000	0.887	0.819	0.895	0.597

159
 160

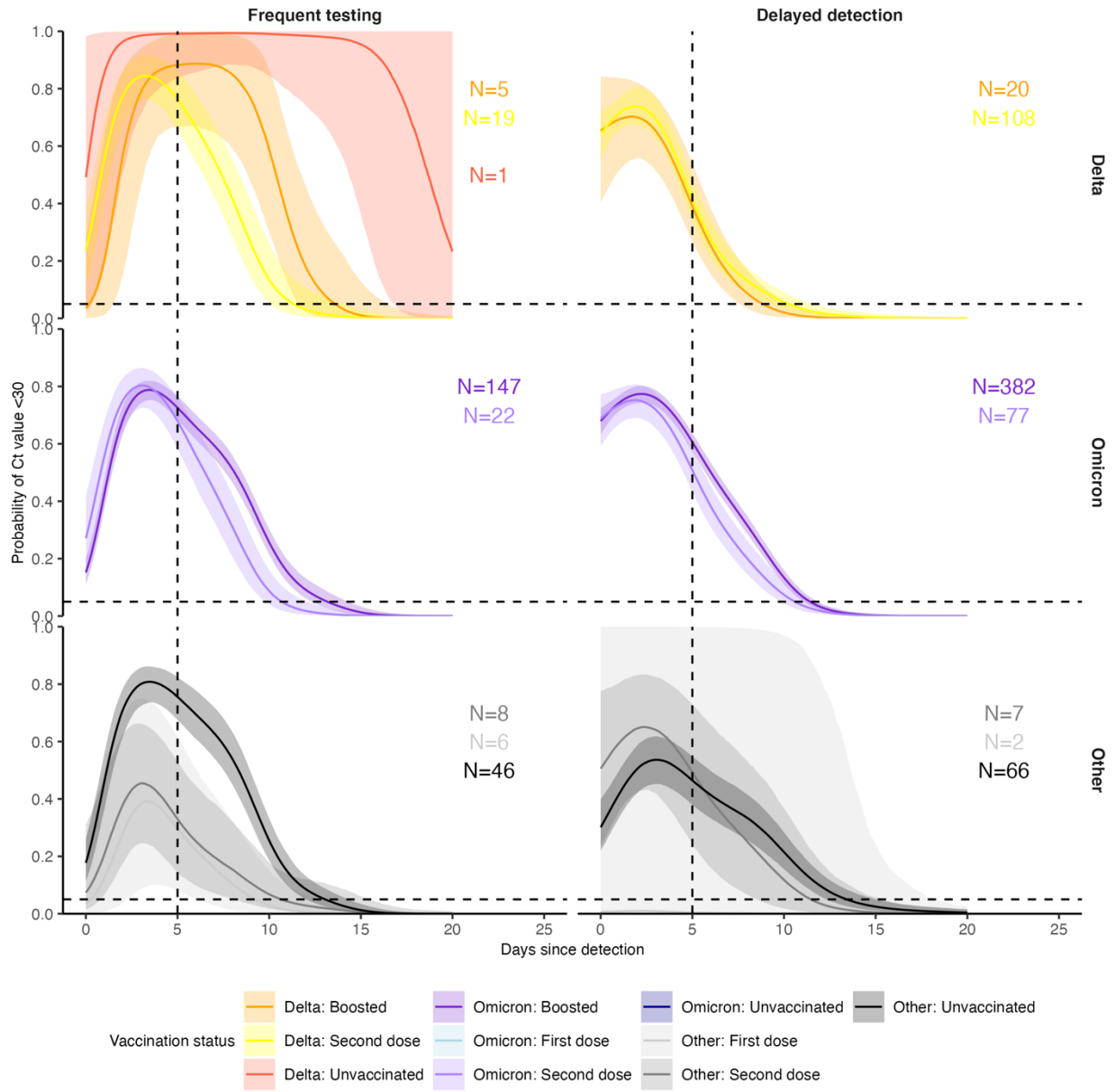
161 **Table S4.** Comparison of linear logistic regression models predicting probability of Ct<30 on
 162 each day since detection among individuals in the delayed testing group. Models are ranked
 163 based on their expected log pointwise predictive density (ELPD), where a lower ELPD implies
 164 better prediction accuracy. Model weight refers to the weight of each model in a Bayesian Model
 165 Averaging analysis, where a higher value implies a greater contribution to model prediction
 166 when combining multiple models. AUC = area under the curve.
 167

Model	ELPD difference	SE difference	Model weight	AUC	Classification accuracy	Accuracy (>=30)	Accuracy (<30)
Cumulative number of exposures and lineage	0.000	0.000	0.314	0.912	0.848	0.895	0.696
Cumulative number of exposures	-3.543	6.862	0.282	0.911	0.847	0.895	0.695
Vaccination status and lineage	-19.169	12.714	0.404	0.911	0.846	0.890	0.705
Vaccination status	-31.913	13.496	0.000	0.909	0.846	0.890	0.704
Days since previous exposure and lineage	-44.479	12.735	0.000	0.910	0.846	0.891	0.705
Lineage	-61.323	13.566	0.000	0.908	0.844	0.883	0.719
Days since previous exposure	-87.874	15.524	0.000	0.906	0.844	0.882	0.721
Baseline	-117.764	17.502	0.000	0.904	0.840	0.877	0.724

168

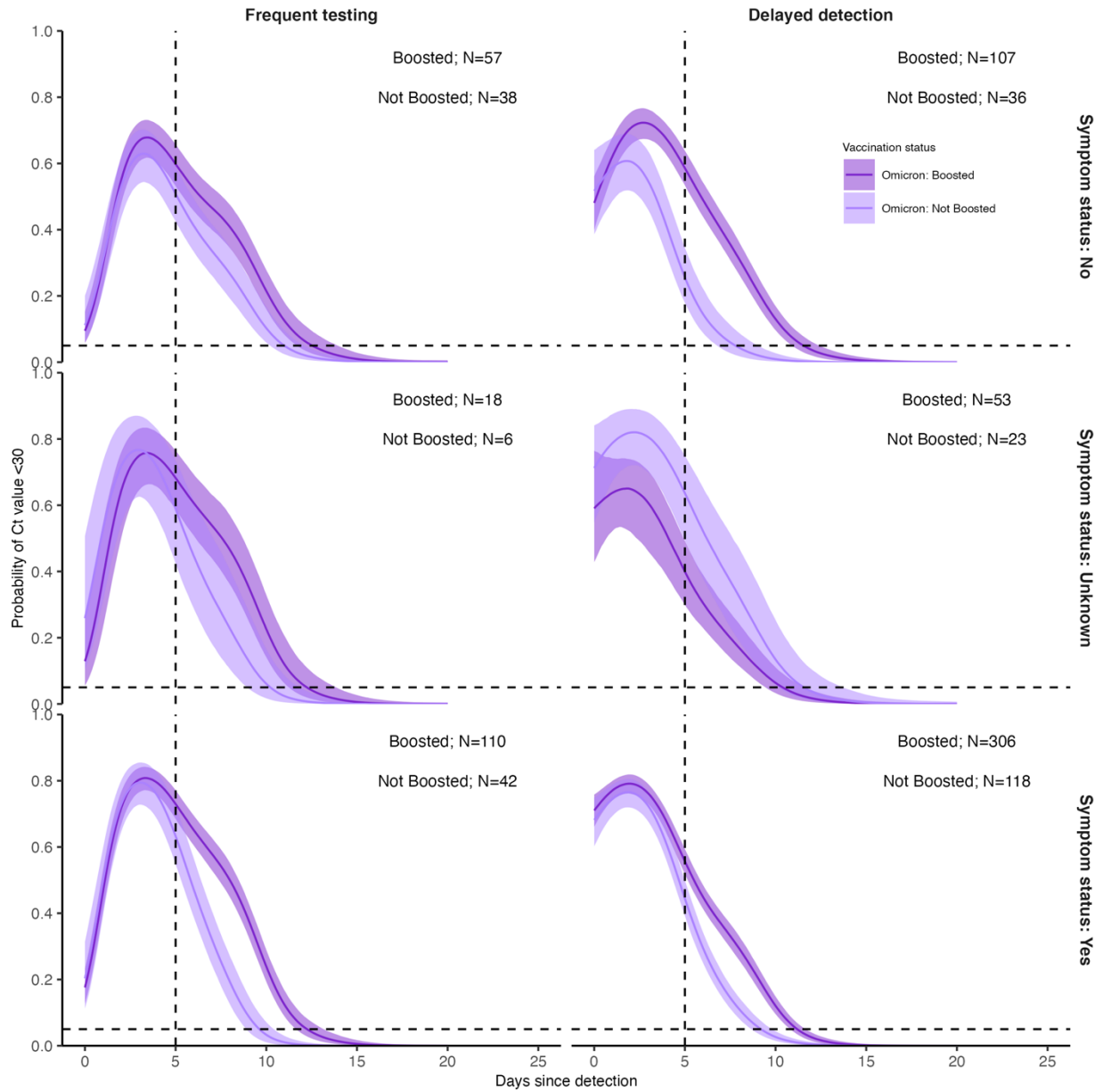


170
 171 **Figure S6.** Proportion of infections with Ct value <30 on each day post detection by confirmed
 172 or suspected variant, vaccination status and detection group. Solid colored lines and shaded
 173 ribbons are posterior estimates from a generalized linear model predicting probability of Ct value
 174 <30 as a function of days since detection and vaccination status, showing the posterior mean
 175 (solid line) and 95% credible intervals (shaded ribbon) of each conditional effect. Dotted
 176 horizontal and vertical lines show 5% probability and day 5 post detection respectively.

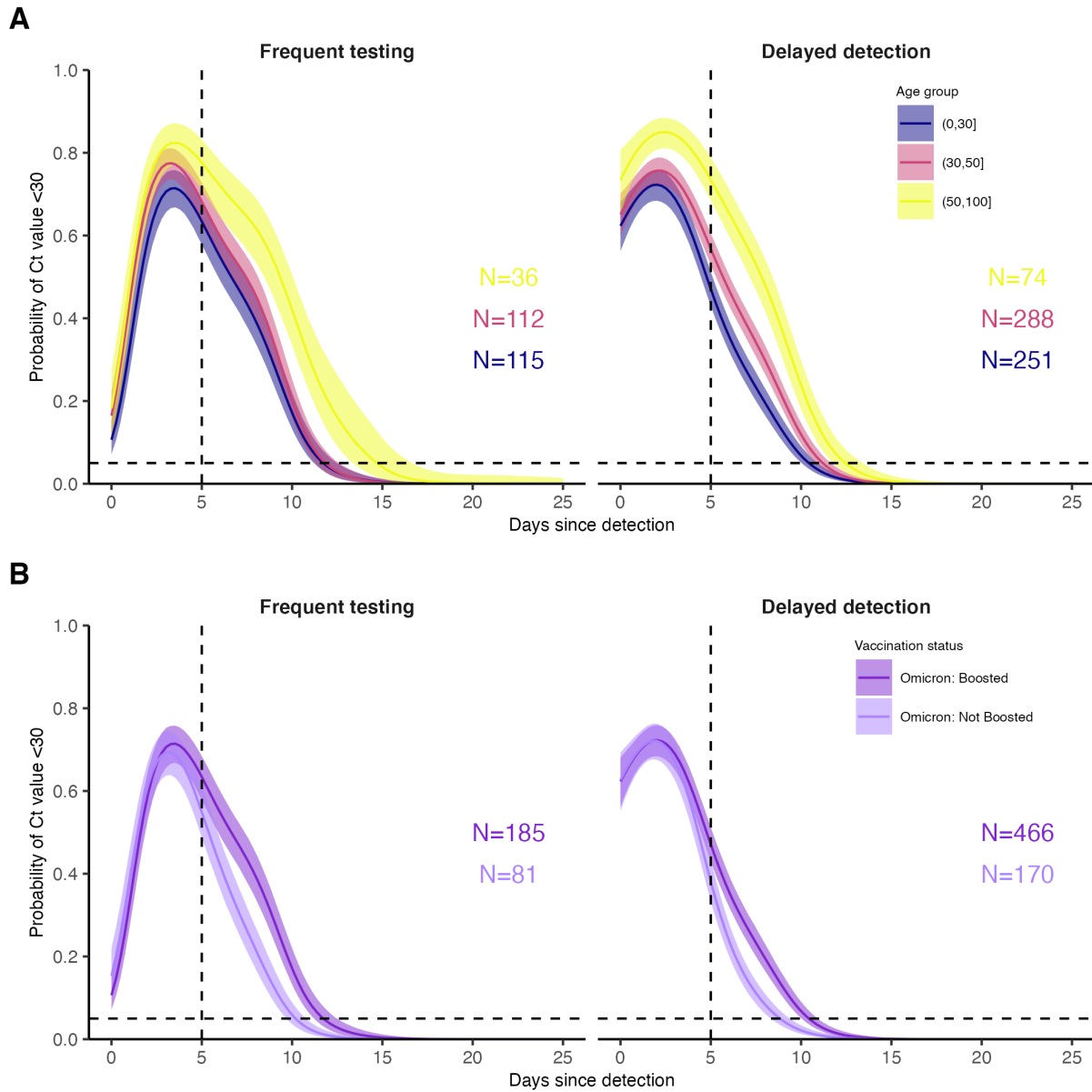


177
178
179

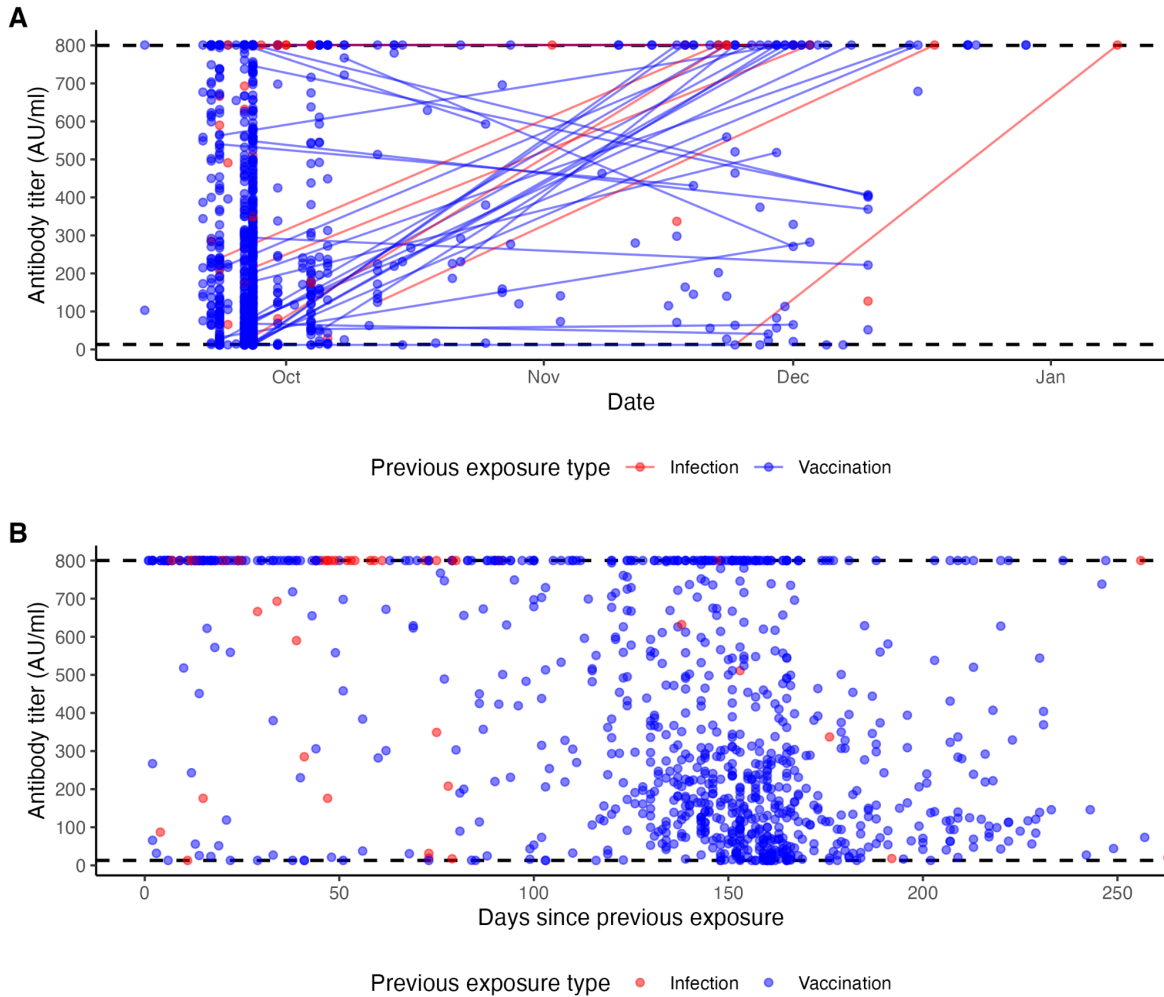
Figure S7. Identical to Supplementary Figure 6, but after excluding data from all players.



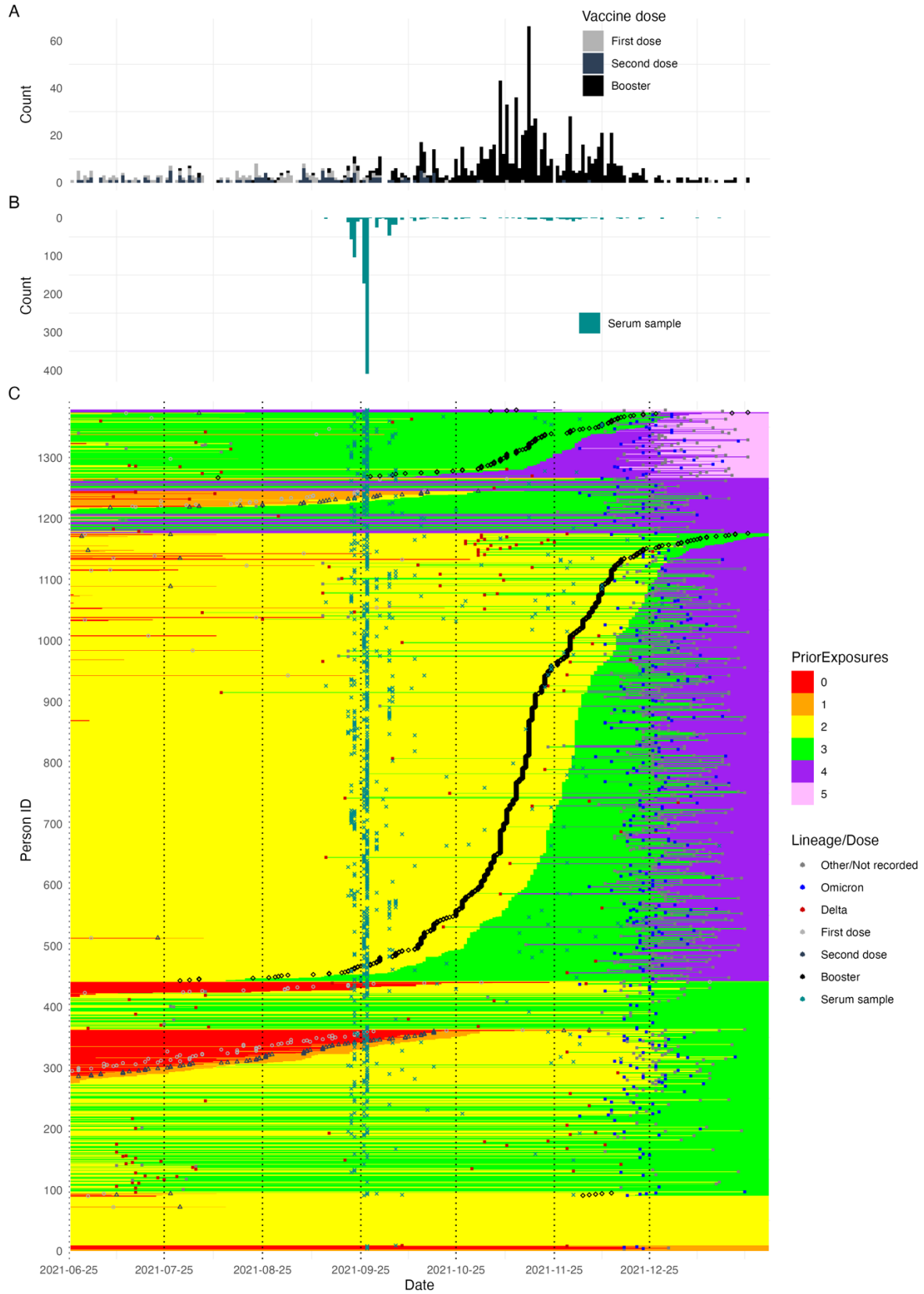
180
 181 **Figure S8.** Proportion of Omicron infections, stratified by symptom status, with Ct value <30 on
 182 each day post detection by booster status and detection group. Solid colored lines and shaded
 183 ribbons are posterior estimates from a generalized linear model predicting probability of Ct value
 184 <30 as a function of days since detection and vaccination status, showing the posterior mean
 185 (solid line) and 95% credible intervals (shaded ribbon) of each conditional effect.
 186



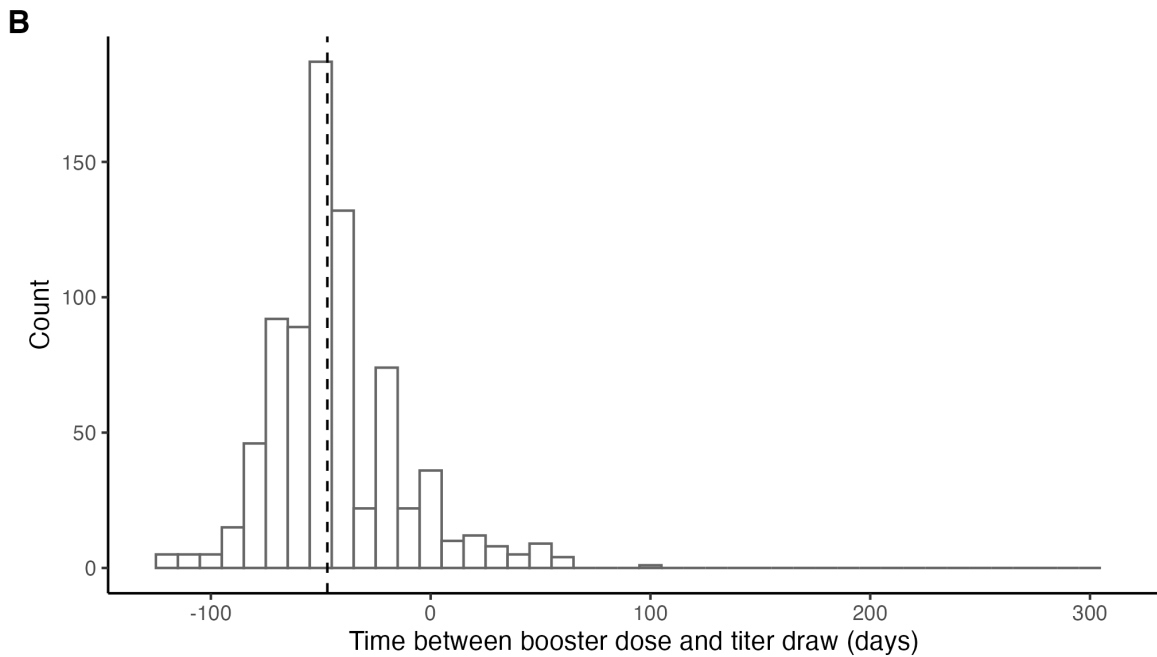
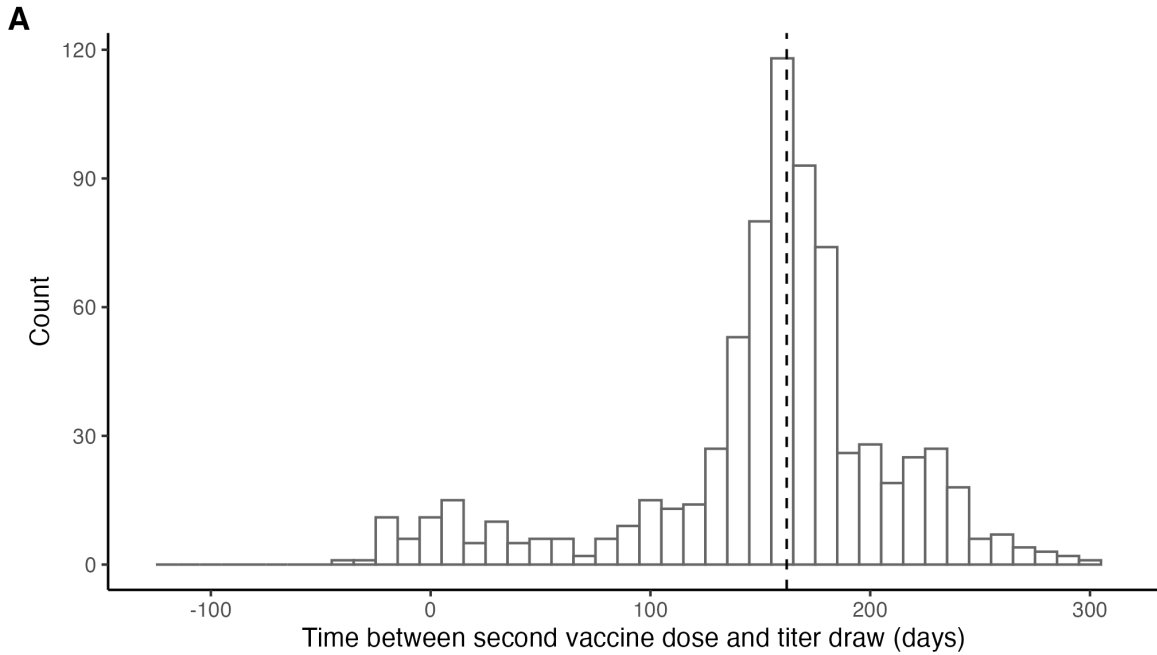
187
 188 **Figure S9.** Proportion of BA.1-infected individuals with Ct value <30 on each day post detection
 189 stratified by detection group and either **(A)** age group after conditioning on vaccination status
 190 and lineage (conditioned on BA.1 infection and boosted status) or **(B)** vaccination status after
 191 conditioning on age group (conditioned on BA.1 infection and age group <30 years). Posterior
 192 estimates are from a generalized linear model predicting probability of Ct value <30 with spline
 193 terms for the interaction between days since detection with age group and the interaction
 194 between days since detection with vaccination status and variant. Solid colored lines and
 195 shaded ribbons show the posterior mean (solid line) and 95% credible intervals (shaded ribbon)
 196 of each conditional effect.



197
 198 **Figure S10.** (A) Measured antibody titers by date of sample collection. Lines show longitudinal
 199 samples from the same individual, colored by the most recent exposure at the time of sample
 200 collection. Lines going up therefore represent antibody boosting events, and lines going down
 201 represent waning. (B) Measured antibody titers by days since previous exposure at time of
 202 sample collection.
 203

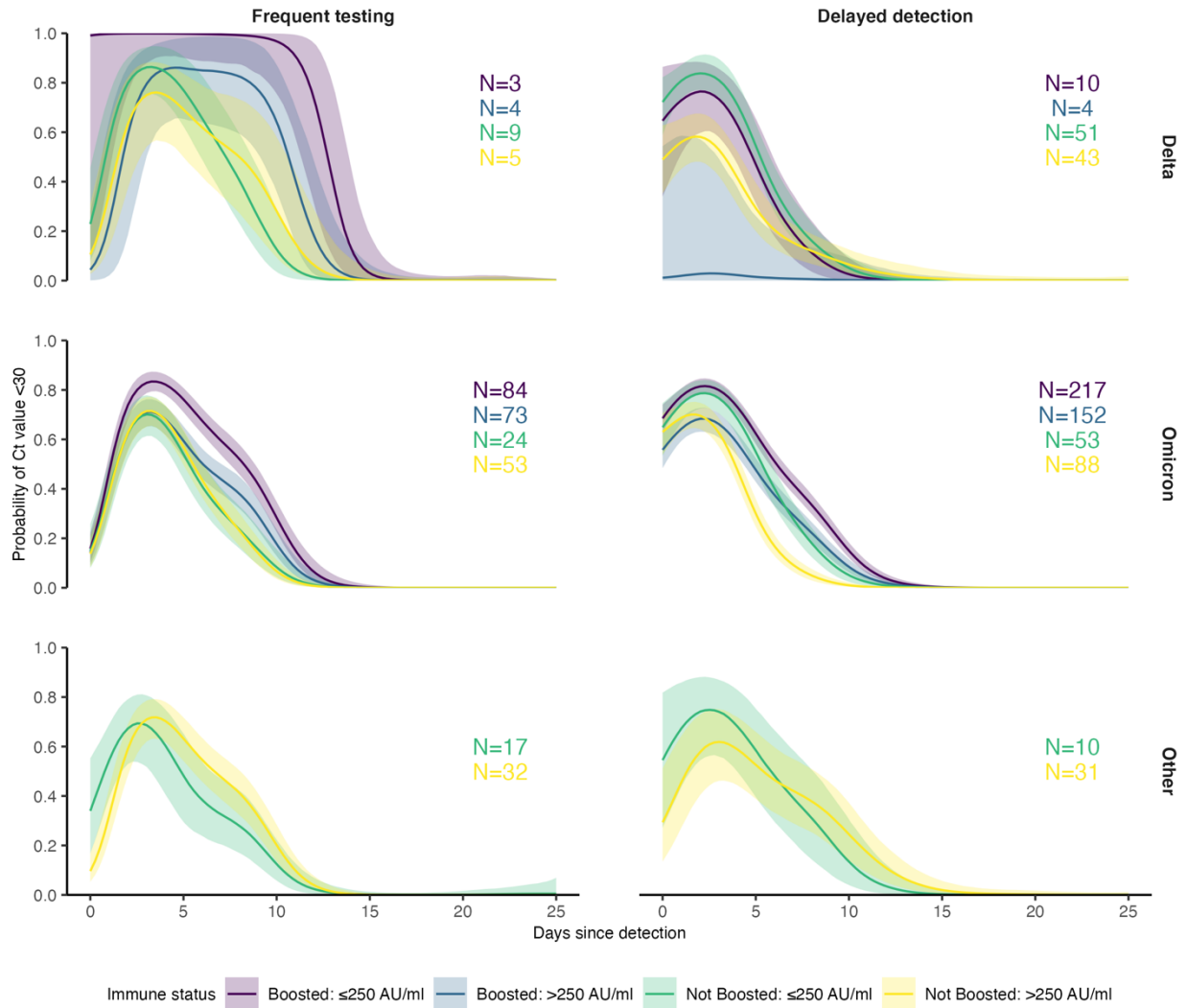


205 **Figure S11.** (A) Distribution of vaccination dates (note that most first doses were administered
206 prior to 2021-06-25). (B) Distribution of serum sample times. (C) Heatmap of individual
207 exposure status over time. Rows represent individuals and columns represent date. Each cell is
208 shaded by the number of prior exposures at that date. Points show detected infections,
209 recorded vaccinations, and serum samples.

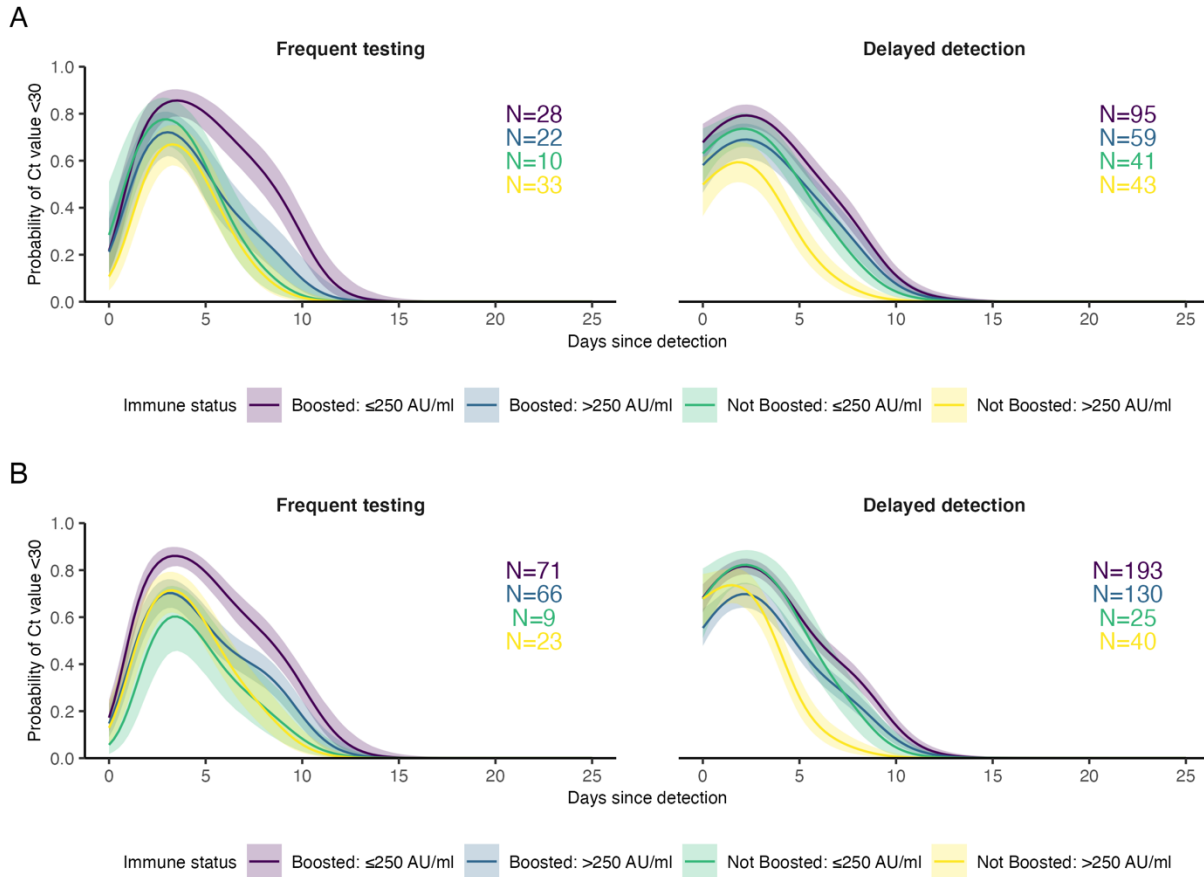


210
211
212
213
214
215
216
217
218

Figure S12. Histogram of time between (A) second vaccine dose and antibody titer measurement and (B) booster dose and antibody titer measurement. Dashed line marks the median lag (162 days). 1 individual was infected between receiving their second vaccine dose and having a titer measurement taken (Delta infection). 42 individuals were infected between having their titer measurement taken and receiving their booster vaccine dose (32 Delta; 9 unsequenced; 1 confirmed Omicron BA.1).

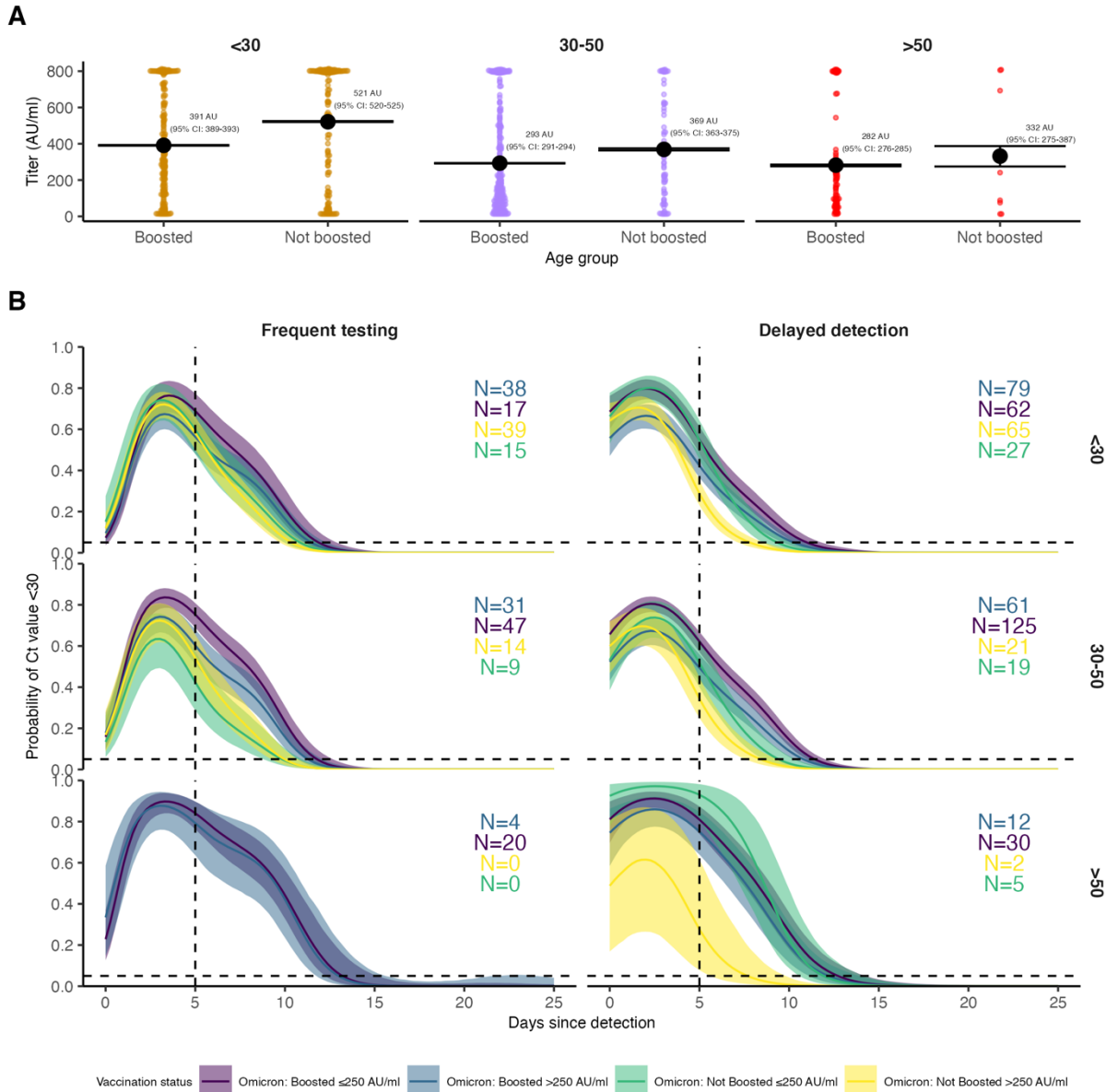


219
 220 **Figure S13.** Proportion of infections with Ct value <30 on each day post detection stratified by
 221 single point-in-time anti-spike antibody titer against ancestral SARS-CoV-2 measured by the
 222 Diasorin Trimeric Assay. Solid colored lines and shaded ribbons are posterior estimates from a
 223 generalized linear model predicting probability of Ct value <30 as a function of days since
 224 detection and titer/vaccination status category, showing the posterior mean (solid line) and 95%
 225 credible intervals (shaded ribbon) of each conditional effect.



226
227
228
229
230
231

Figure S14. Identical to Omicron plots shown in Supplementary Figure 11, but only including individuals who had antibody titers measured between 100 and 200 days following a known previous infection of vaccination (A) or including infections between 60 and 90 days after an antibody titer measurement (B).



232
 233
 234
 235
 236
 237
 238
 239
 240
 241
 242
 243
 244
 245
 246

Figure S15. (A) Distribution of antibody titers among Omicron BA.1-infected individuals (colored points) stratified by age group and vaccination status, with mean titers (large black points) and bootstrapped 95% confidence intervals for the mean (horizontal lines). Note that stratification is by infection and not individual, and that antibody titers were measured at a single point in time rather than near the time of infection. The Diasorin Trimeric Assay values are truncated between 13 and 800 AU/ml. (B) Proportion of BA.1-infected individuals with Ct value <30 on each day post detection stratified by detection group after conditioning on age group. Posterior estimates are from a generalized linear model predicting probability of Ct value <30 with spline terms for the interaction between days since detection with age group and the interaction between days since detection with vaccination status and antibody titer group. Solid colored lines and shaded ribbons show the posterior mean (solid line) and 95% credible intervals (shaded ribbon) of each conditional effect.

247 **Table S5. Posterior estimates of viral trajectory attributes by variant and vaccination**
 248 **status.** Estimates are posterior means with 95% credible intervals.
 249

Trajectory value	Variant/vaccination status	Estimate
Peak viral load (Ct)	Other: Unvaccinated	25.0 (24.2, 25.9)
	Delta: 1-2 doses	22.4 (21.4, 23.5)
	Omicron: 1-2 doses	25.6 (25.0, 26.2)
	Omicron: Boosted	25.7 (25.4, 26.1)
Peak viral load (log ₁₀ copies/ml)	Other: Unvaccinated	6.8 (6.6, 7.0)
	Delta: 1-2 doses	7.5 (7.2, 7.8)
	Omicron: 1-2 doses	6.6 (6.5, 6.8)
	Omicron: Boosted	6.6 (6.5, 6.7)
Proliferation time (days)	Other: Unvaccinated	3.5 (3.1, 3.9)
	Delta: 1-2 doses	3.6 (3.1, 4.1)
	Omicron: 1-2 doses	3.6 (3.3, 4.0)
	Omicron: Boosted	4.0 (3.8, 4.3)
Clearance time (days)	Other: Unvaccinated	9.9 (9.2, 10.6)
	Delta: 1-2 doses	7.6 (7.0, 8.3)
	Omicron: 1-2 doses	6.2 (5.8, 6.6)
	Omicron: Boosted	8.4 (8.0, 8.7)

250
 251
 252

253
 254
 255
 256

Table S6. Posterior estimates of viral trajectory attributes by variant and antibody titer.
 Estimates are posterior means with 95% credible intervals.

Trajectory attribute	Variant/immune status	Estimate
Peak viral load (Ct)	Other: Unexposed	24.8 (24.0, 25.6)
	Delta: Exposed, ≤ 250 AU	22.1 (20.6, 23.4)
	Delta: Exposed, > 250 AU	24.4 (22.7, 26.1)
	Omicron: Exposed, ≤ 250 AU	25.2 (24.7, 25.6)
	Omicron: Exposed, > 250 AU	26.2 (25.7, 26.6)
Peak viral load (\log_{10} copies/ml)	Other: Unexposed	6.9 (6.6, 7.1)
	Delta: Exposed, ≤ 250 AU	7.6 (7.3, 8.0)
	Delta: Exposed, > 250 AU	7.0 (6.5, 7.4)
	Omicron: Exposed, ≤ 250 AU	6.8 (6.7, 6.9)
	Omicron: Exposed, > 250 AU	6.5 (6.4, 6.6)
Proliferation time (days)	Other: Unexposed	3.5 (3.2, 3.9)
	Delta: Exposed, ≤ 250 AU	3.6 (2.8, 4.5)
	Delta: Exposed, > 250 AU	4.2 (3.3, 5.3)
	Omicron: Exposed, ≤ 250 AU	3.9 (3.6, 4.2)
	Omicron: Exposed, > 250 AU	3.7 (3.5, 4.0)
Clearance time (days)	Other: Unexposed	9.8 (9.1, 10.6)
	Delta: Exposed, ≤ 250 AU	7.7 (6.9, 8.7)
	Delta: Exposed, > 250 AU	7.6 (6.4, 8.8)
	Omicron: Exposed, ≤ 250 AU	8.4 (8.0, 8.8)
	Omicron: Exposed, > 250 AU	6.9 (6.6, 7.3)

257

258
259
260

Table S7. Posterior estimates of Omicron BA.1 viral trajectory attributes by symptom and vaccination status. Estimates are posterior means with 95% credible intervals.

Trajectory attribute	Variant/immune status	Estimate
Peak viral load (Ct)	Omicron: 1-2 doses, no symptoms	26.7 (25.7, 27.7)
	Omicron: 1-2 doses, symptoms	25.3 (24.5, 26.1)
	Omicron: boosted, no symptoms	26.3 (25.7, 27)
	Omicron: boosted, symptoms	25.4 (25, 25.8)
Peak viral load (log ₁₀ copies/ml)	Omicron: 1-2 doses, no symptoms	6.3 (6.1, 6.6)
	Omicron: 1-2 doses, symptoms	6.7 (6.5, 6.9)
	Omicron: boosted, no symptoms	6.4 (6.3, 6.6)
	Omicron: boosted, symptoms	6.7 (6.6, 6.8)
Proliferation time (days)	Omicron: 1-2 doses, no symptoms	3.7 (3.2, 4.2)
	Omicron: 1-2 doses, symptoms	3.7 (3.2, 4.2)
	Omicron: boosted, no symptoms	4.3 (3.9, 4.8)
	Omicron: boosted, symptoms	3.8 (3.5, 4.1)
Clearance time (days)	Omicron: 1-2 doses, no symptoms	5.9 (5.2, 6.6)
	Omicron: 1-2 doses, symptoms	6.3 (5.8, 6.8)
	Omicron: boosted, no symptoms	7.4 (6.8, 8.0)
	Omicron: boosted, symptoms	8.7 (8.3, 9.1)

261

262
263
264

Table S8. Posterior estimates of Omicron BA.1 viral trajectory attributes by symptom and antibody titer. Estimates are posterior means with 95% credible intervals.

Trajectory attribute	Variant/immune status	Estimate
Peak viral load (Ct)	Omicron: Low titer, no symptoms	26.1 (25.2, 26.9)
	Omicron: Low titer, symptoms	24.8 (24.3, 25.4)
	Omicron: High titer, no symptoms	26.7 (25.9, 27.5)
	Omicron: High titer, symptoms	25.9 (25.4, 26.5)
Peak viral load (log ₁₀ copies/ml)	Omicron: Low titer, no symptoms	6.5 (6.3, 6.8)
	Omicron: Low titer, symptoms	6.9 (6.7, 7.0)
	Omicron: High titer, no symptoms	6.3 (6.1, 6.6)
	Omicron: High titer, symptoms	6.6 (6.4, 6.7)
Proliferation time (days)	Omicron: Low titer, no symptoms	4.3 (3.8, 4.9)
	Omicron: Low titer, symptoms	3.6 (3.3, 4.0)
	Omicron: High titer, no symptoms	3.8 (3.4, 4.3)
	Omicron: High titer, symptoms	3.8 (3.4, 4.2)
Clearance time (days)	Omicron: Low titer, no symptoms	7.4 (6.7, 8.1)
	Omicron: Low titer, symptoms	8.7 (8.2, 9.3)
	Omicron: High titer, no symptoms	6.4 (5.8, 7.1)
	Omicron: High titer, symptoms	7.1 (6.6, 7.5)

265
266

267 **Table S9. Posterior estimates of Omicron BA.1 viral RNA clearance times by age and**
 268 **vaccination status.** Estimates are posterior means with 95% credible intervals. Low titer is
 269 ≤ 250 AU, high titer is > 250 AU.
 270

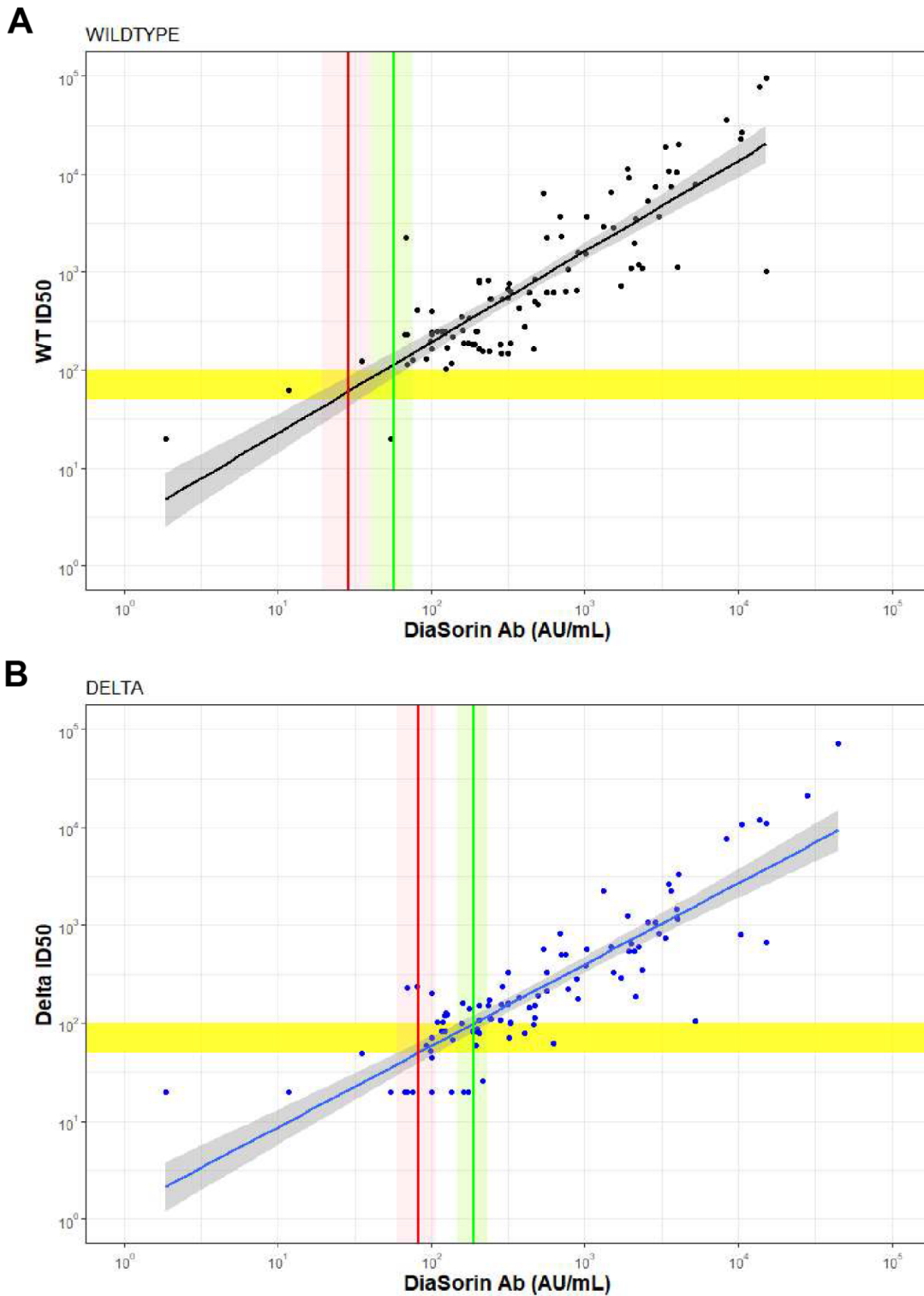
Trajectory attribute	Variant/immune status	Estimate
Peak viral load (Ct)	Omicron: <30, unboosted	25.6 (25, 26.3)
	Omicron: <30, boosted	25.8 (25.1, 26.4)
	Omicron: 30-50, unboosted	25.3 (24.2, 26.5)
	Omicron: 30-50, boosted	25.7 (25.2, 26.2)
	Omicron: 50+, unboosted	25.5 (22.8, 27.9)
	Omicron: 50+, boosted	25.5 (24.6, 26.3)
Peak viral load (\log_{10} copies/ml)	Omicron: <30, unboosted	6.6 (6.4, 6.8)
	Omicron: <30, boosted	6.6 (6.4, 6.8)
	Omicron: 30-50, unboosted	6.7 (6.4, 7)
	Omicron: 30-50, boosted	6.6 (6.5, 6.7)
	Omicron: 50+, unboosted	6.7 (6, 7.4)
	Omicron: 50+, boosted	6.7 (6.5, 6.9)
Proliferation time (days)	Omicron: <30, unboosted	3.7 (3.4, 4.1)
	Omicron: <30, boosted	4.2 (3.8, 4.7)
	Omicron: 30-50, unboosted	3.6 (3, 4.4)
	Omicron: 30-50, boosted	4 (3.6, 4.3)
	Omicron: 50+, unboosted	4.4 (3, 6.3)
	Omicron: 50+, boosted	3.9 (3.4, 4.4)
Clearance time (days)	Omicron: <30, unboosted	6 (5.6, 6.5)
	Omicron: <30, boosted	7.2 (6.7, 7.7)
	Omicron: 30-50, unboosted	6.4 (5.7, 7.2)
	Omicron: 30-50, boosted	8.6 (8.1, 9.1)
	Omicron: 50+, unboosted	8.7 (6.6, 11.2)
	Omicron: 50+, boosted	9.6 (8.8, 10.6)

271

272 **Table S10. Posterior estimates of Omicron BA.1 viral RNA clearance times by age and**
 273 **titer.** Estimates are posterior means with 95% credible intervals. Low titer is ≤ 250 AU, high titer
 274 is > 250 AU.
 275

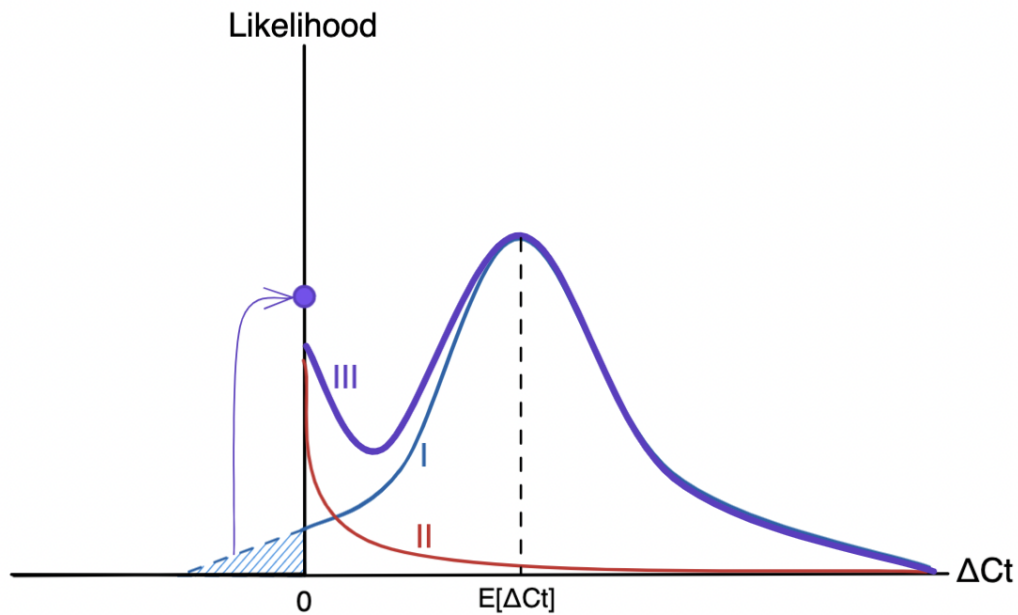
Trajectory attribute	Variant/immune status	Estimate
Peak viral load (Ct)	Omicron: <30, low titer	24.8 (24, 25.5)
	Omicron: <30, high titer	26.2 (25.6, 26.8)
	Omicron: 30-50, low titer	25.4 (24.8, 26)
	Omicron: 30-50, high titer	26.1 (25.4, 26.8)
	Omicron: 50+, low titer	24.9 (23.8, 25.9)
	Omicron: 50+, high titer	26.3 (24.8, 27.6)
Peak viral load (\log_{10} copies/ml)	Omicron: <30, low titer	6.9 (6.7, 7.1)
	Omicron: <30, high titer	6.5 (6.3, 6.7)
	Omicron: 30-50, low titer	6.7 (6.5, 6.9)
	Omicron: 30-50, high titer	6.5 (6.3, 6.7)
	Omicron: 50+, low titer	6.8 (6.6, 7.1)
	Omicron: 50+, high titer	6.5 (6.1, 6.9)
Proliferation time (days)	Omicron: <30, low titer	3.9 (3.4, 4.3)
	Omicron: <30, high titer	4 (3.6, 4.4)
	Omicron: 30-50, low titer	4 (3.6, 4.4)
	Omicron: 30-50, high titer	3.6 (3.2, 4)
	Omicron: 50+, low titer	3.8 (3.2, 4.5)
	Omicron: 50+, high titer	3.7 (2.9, 4.7)
Clearance time (days)	Omicron: <30, low titer	7.2 (6.7, 7.8)
	Omicron: <30, high titer	6.2 (5.8, 6.7)
	Omicron: 30-50, low titer	8.7 (8.1, 9.3)
	Omicron: 30-50, high titer	7.4 (6.8, 8)
	Omicron: 50+, low titer	9.9 (8.7, 11.1)
	Omicron: 50+, high titer	9.5 (8, 11.1)

276



278
 279 **Figure S16.** Correlation between authentic virus neutralization assay (ID50) and the Diasorin
 280 antibody titer against (A) wildtype and (B) Delta. Horizontal yellow bar shows an ID50 titer of 50
 281 and 100 respectively, Diagonal lines and shaded regions show mean and 95% confidence
 282 intervals (CI) for a linear regression between the Diasorin antibody titer and ID50 titer.

283 line and shaded regions show point estimate and 95% CI for the Diasorin antibody titer
284 corresponding to an ID50 titer of 50 (red) and 100 (green).



285
 286 **Figure S17. Schematic diagram of the likelihood function for viral kinetic inference.** The
 287 plot depicts the likelihood as a function of ΔC_t , the difference between the observed C_t value
 288 and the limit of detection, so that $\Delta C_t = 0$ (the origin) represents observations at the limit of
 289 detection, with viral load increasing toward the right-hand side of the plot. The likelihood function
 290 (III, purple) is made up of two fundamental components: the process likelihood (I, blue) and the
 291 false negative distribution (II, red). The main component of the process likelihood (I) is defined
 292 by a normal distribution with mean $E[\Delta C_t]$, a function of the estimated viral kinetic parameters as
 293 defined by the viral kinetic model. Any mass of the process likelihood that extends below the
 294 limit of detection (blue hatched region) is instead added to a point probability mass at the origin,
 295 since viral loads below the limit of detection register at the limit of detection. The false negative
 296 distribution (II) is an exponential distribution with fixed rate to account for a small amount of
 297 noise near the limit of detection. Summing the process likelihood (I) and the false negative
 298 likelihood (I) using the mixing probability λ ($= 1 - \text{sensitivity}$) yields the overall likelihood (III).
 299
 300