

## Supplementary information

### Correlation of patient serum IgG, IgA and IgM antigen binding with COVID-19 disease severity using multiplexed SARS-CoV-2 antigen microarray and maintained relative IgA and IgM antigen binding over time

Marie Le Berre,<sup>1</sup> Terézia Paulovčáková,<sup>1</sup> Carolina De Marco Verissimo,<sup>2</sup> Seán Doyle,<sup>3</sup> John P. Dalton,<sup>2</sup> Claire Masterson,<sup>4</sup> Eduardo Ribes Martínez,<sup>5,6</sup> Laura Walsh,<sup>7</sup> Conor Gormley,<sup>8</sup> John G. Laffey,<sup>4,9</sup> Bairbre McNicholas,<sup>4,9</sup> Andrew J. Simpkin,<sup>10</sup> Michelle Kilcoyne<sup>1,\*</sup>

<sup>1</sup> Carbohydrate Signalling Group, Discipline of Microbiology, School of Chemical and Biological Sciences, University of Galway, University Road, Galway, H91 TK33, Ireland.

<sup>2</sup> Molecular Parasitology Lab, Centre for One Health and Ryan Institute, School of Natural Science, University of Galway, University Road, Galway, H91 TK33, Ireland.

<sup>3</sup> Department of Biology, Maynooth University, Maynooth, Co. Kildare, Ireland.

<sup>4</sup> School of Medicine, and Regenerative Medicine Institute (REMEDI) at CÚRAM Centre for Research in Medical Devices, University of Galway, Galway, Ireland.

<sup>5</sup> Lambe Institute for Translational Research, School of Medicine, College of Medicine, Nursing and Health Sciences, University of Galway, Galway, Ireland.

<sup>6</sup> Current address: Gene Center, Ludwig-Maximilians University of Munich, Feodor-Lynen-Str. 25, 81377 Munich, Germany

<sup>7</sup> University College Dublin, Belfield, Dublin 4, D04 V1W8, Ireland.

<sup>8</sup> Royal College of Surgeons in Ireland, 123 St. Stephen's Green, Dublin 2, Ireland.

<sup>9</sup> Department of Anaesthesia and Intensive Care Medicine, University Hospital Galway, Saolta University Hospital Group, Newcastle Road, Galway, Ireland.

<sup>10</sup> School of Mathematical and Statistical Sciences, University of Galway, University Road, Galway, H91 TK33, Ireland.

\* Corresponding author. Email: michelle.kilcoyne@nuigalway.ie

## Table of contents

**Fig. S1.** Purified SARS-CoV-2-positive patient (severe disease) serum IgG, IgA and IgM and the IgG-, IgM- and IgA-depleted flow through printed on a Nexterion® slide H surface and incubated with fluorescently labelled anti-isotype antibodies in different subarrays.

**Fig. S2.** Bar chart representing the binding intensity of His-tagged recombinant SARS-CoV-2 protein antigens to printed serum antibody isotypes purified from one SARS-CoV-2-positive patient (severe disease) serum sample.

**Fig. S3.** Antigen microarray print optimisation.

**Fig. S4.** Bar charts representing the binding intensity of diluted serum (1/100 in PBS-T) and purified serum antibody isotypes from a SARS-CoV-2-positive patient detected by fluorescently-labelled anti-isotype antibodies.

**Fig. S5.** Glycosylation profiling of SARS-CoV-2 antigens produced in mammalian (HEK) and insect (Sf21) cells.

**Fig. S6.** Dynamic binding of patient serum antibody isotypes over short term for severe COVID-19 disease.

**Fig. S7.** Dynamic binding of patient serum antibody isotypes over medium term for severe and mild COVID-19 disease.

**Fig. S8.** Variation in IgG binding to (A) Npro Full Ecoli and (B) S2Frag Ecoli for a subset of patient samples.

**Table S1.** Recombinant SARS-CoV-2 proteins used to construct the antigen (Ag) microarray.

**Table S2.** Lectins used for recombinant SARS-CoV-2 proteins glycoprofiling.

**Table S3.** Supplementary Excel file containing all antibody isotype binding to SARS-CoV-2 antigens from antigen microarray experiments and patient clinical data.

**Table S4.** Significance of correlation analysis for first sampling point serum IgG samples binding to antigens with low intensity compared to non-COVID-19 samples.

**Table S5.** Significance of correlation analysis for first sampling point serum IgG samples binding to antigens with high intensity compared to non-COVID-19 samples.

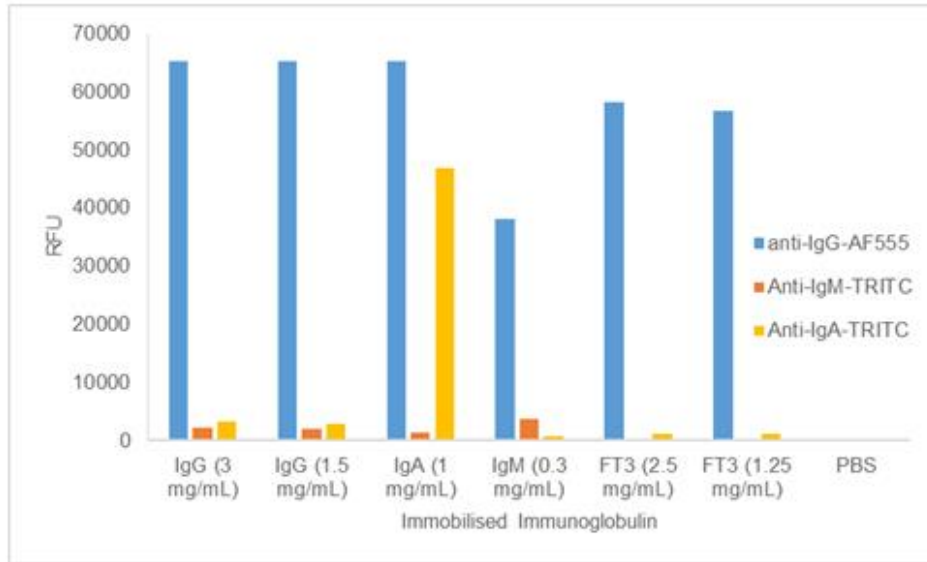
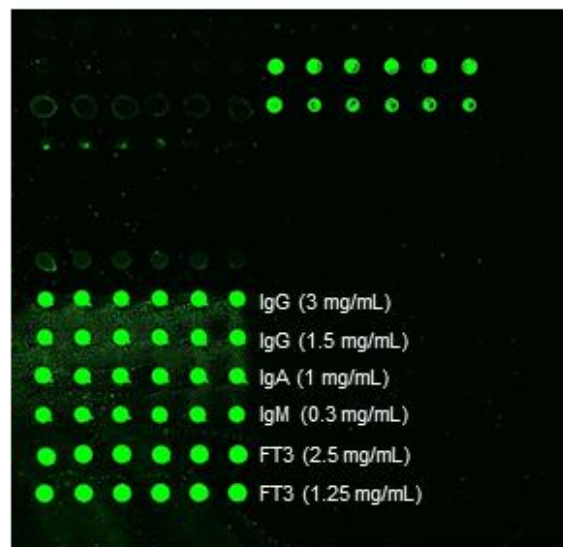
**Table S6.** Significance of correlation analysis for first sampling point serum IgA samples binding to antigens with low intensity compared to non-COVID-19 samples.

**Table S7.** Significance of correlation analysis for first sampling point serum IgA samples binding to antigens with high intensity compared to non-COVID-19 samples.

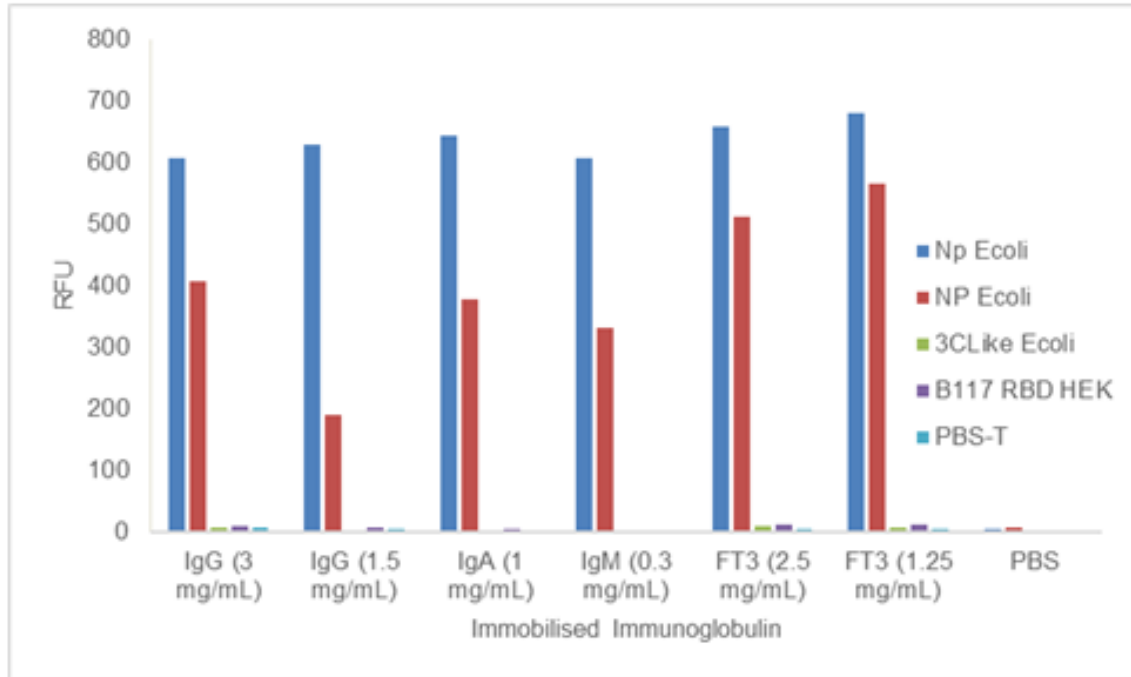
**Table S8.** Significance of correlation analysis for first sampling point serum IgM samples binding to antigens with low intensity compared to non-COVID-19 samples.

**Table S8.** Significance of correlation analysis for first sampling point serum IgM samples binding to antigens with high intensity compared to non-COVID-19 samples.

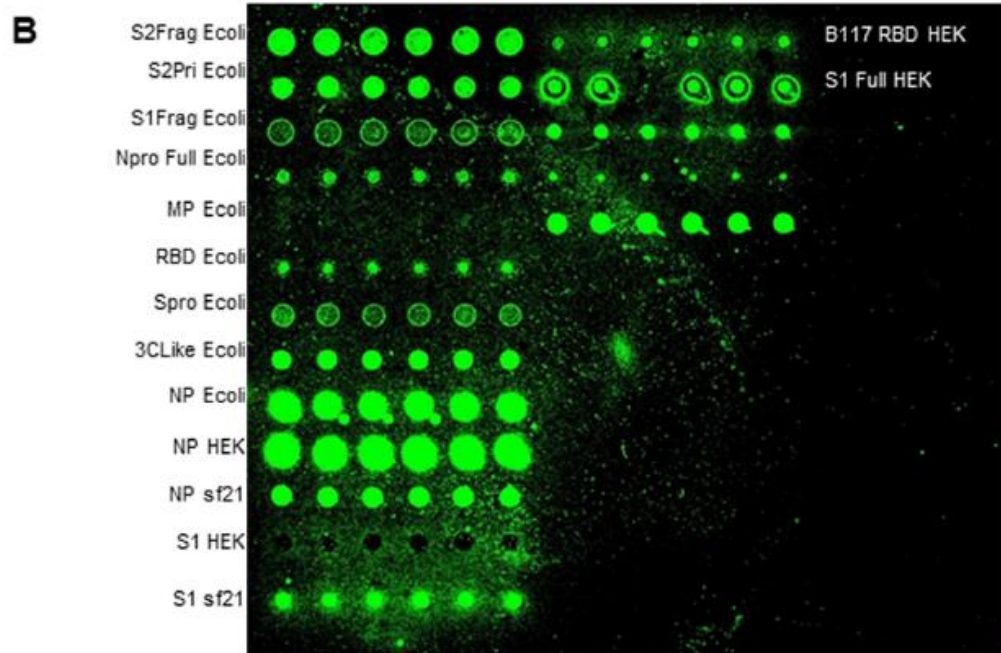
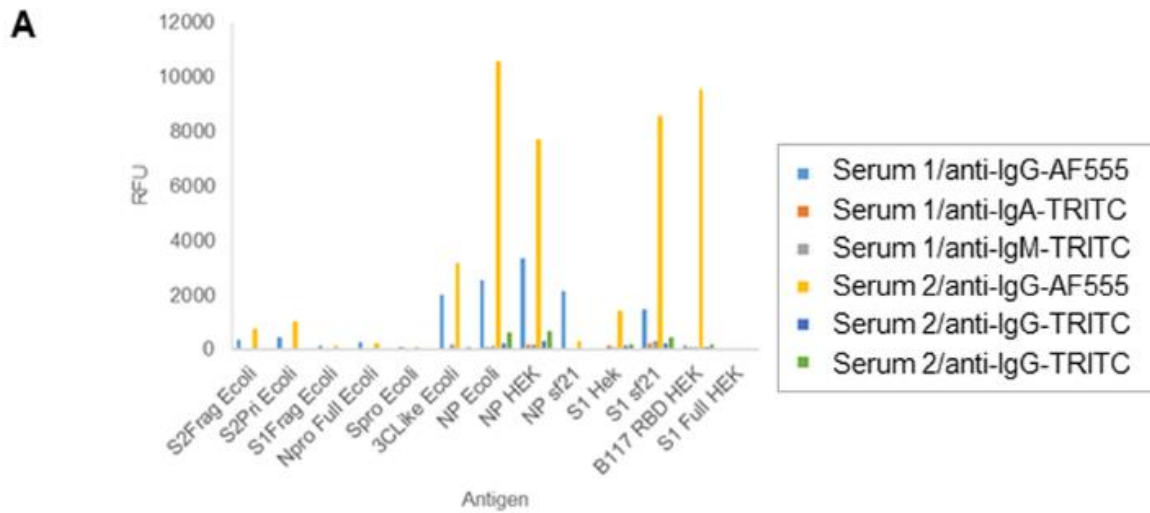
**Table S10.** Serum sample information including follow up samples.

**A****B**

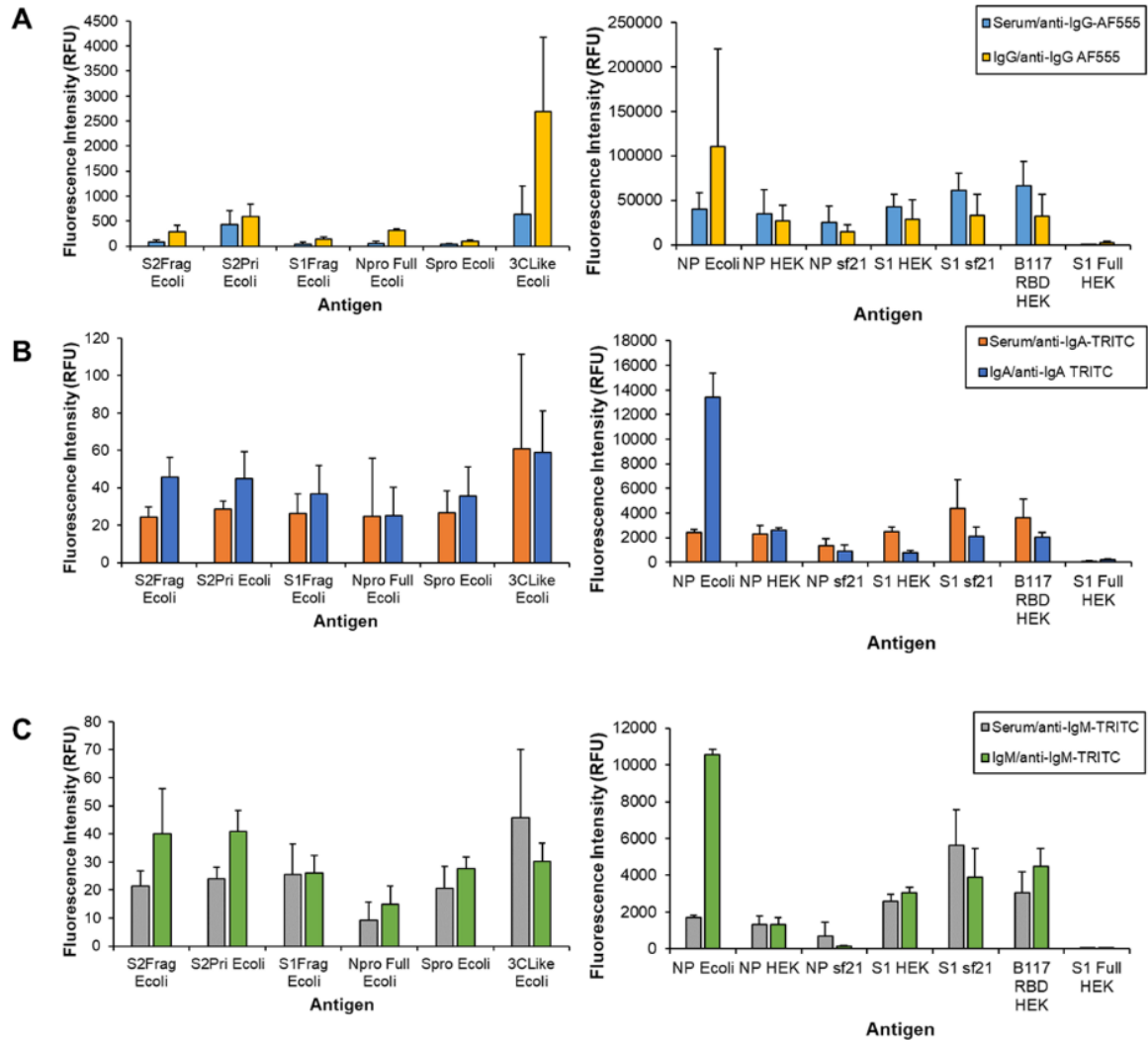
**Fig. S1.** Purified SARS-CoV-2-positive patient (severe disease) serum IgG, IgA and IgM and the IgG-, IgM- and IgA-depleted flow through printed on a Nexterion® slide H surface and incubated with fluorescently labelled anti-isotype antibodies in different subarrays. IgG was printed at 3 and 1.5 mg/mL, IgA at 1 mg/mL and IgM at 0.3 mg/mL and the flow through (FT3) at 2.5 and 1.25 mg/mL. **(A)** Bar chart representing the binding intensity of the fluorescently-labelled anti-isotype antibodies binding to immobilised IgG, IgA and IgM, incubated at 1, 2, and 1  $\mu$ g/mL, respectively. **(B)** Scanned image of a subarray depicting the printed serum IgG, IgA, IgM and Ig-depleted FT3 incubated with fluorescently labelled anti-IgG antibody. The cross-reactivity of the anti-IgG antibody for IgA and IgM can be clearly observed and remaining IgGs were also detected in the Ig-depleted flow through FT3.



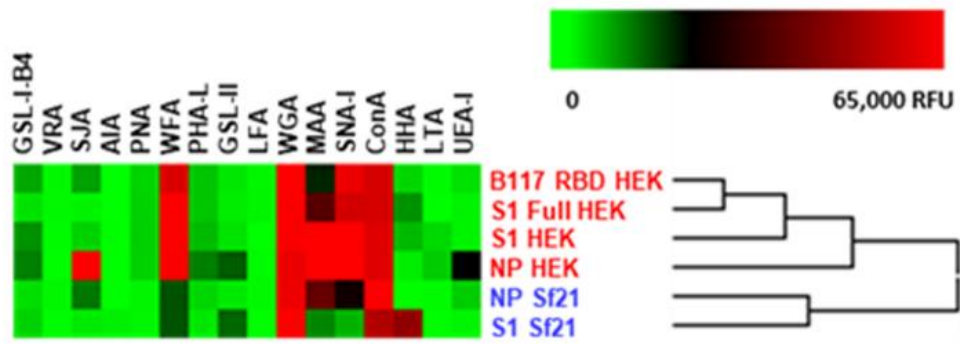
**Fig. S2.** Bar chart representing the binding intensity of His-tagged recombinant SARS-CoV-2 protein antigens to printed serum antibody isotypes purified from one SARS-CoV-2-positive patient (severe disease) serum sample. The serum antibody isotype microarray slides were incubated with a panel of antigens: NP Ecoli at 67 and 27  $\mu\text{g/mL}$ , 3CLike Ecoli at 70  $\mu\text{g/mL}$  and B117 RBD HEK at 17  $\mu\text{g/mL}$ . Antigen binding was detected by incubation with fluorescently-labelled anti-His antibody at 1  $\mu\text{g/mL}$ .



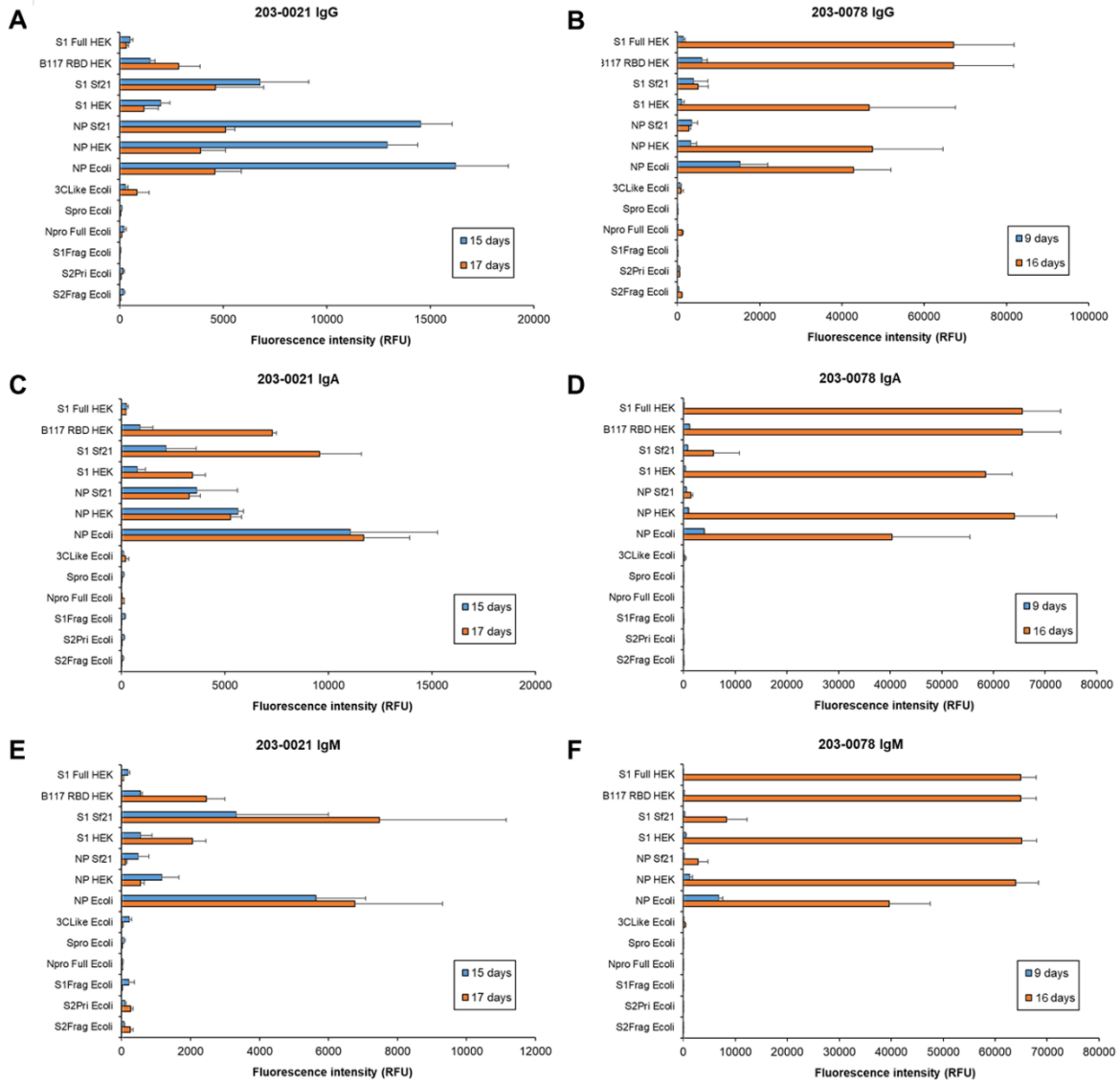
**Fig. S3.** Antigen microarray print optimisation. (A) Serum antibody isotype binding to SARS-CoV-2 antigens on microarray detected by either tetramethylrhodamine- (TRITC-) or AlexaFluor® 555- (AF555-)labelled anti-isotype antibodies. (B) Representative image of a subarray from an antigen microarray slide incubated with SARS-CoV-2-positive patient serum followed by detection with anti-IgG-AF555.



**Fig. S4.** Bar charts representing the binding intensity of diluted serum (1/100 in PBS-T) and purified serum antibody isotypes from a SARS-CoV-2-positive patient detected by fluorescently-labelled anti-isotype antibodies. Binding comparisons of (A) serum and purified serum IgG, (B) serum and purified IgA, and (C) serum and purified IgM. Comparisons of serum versus purified antibody isotype detection are shown across two charts to allow visualisation of lower serum antibody isotype binding to certain antigens.

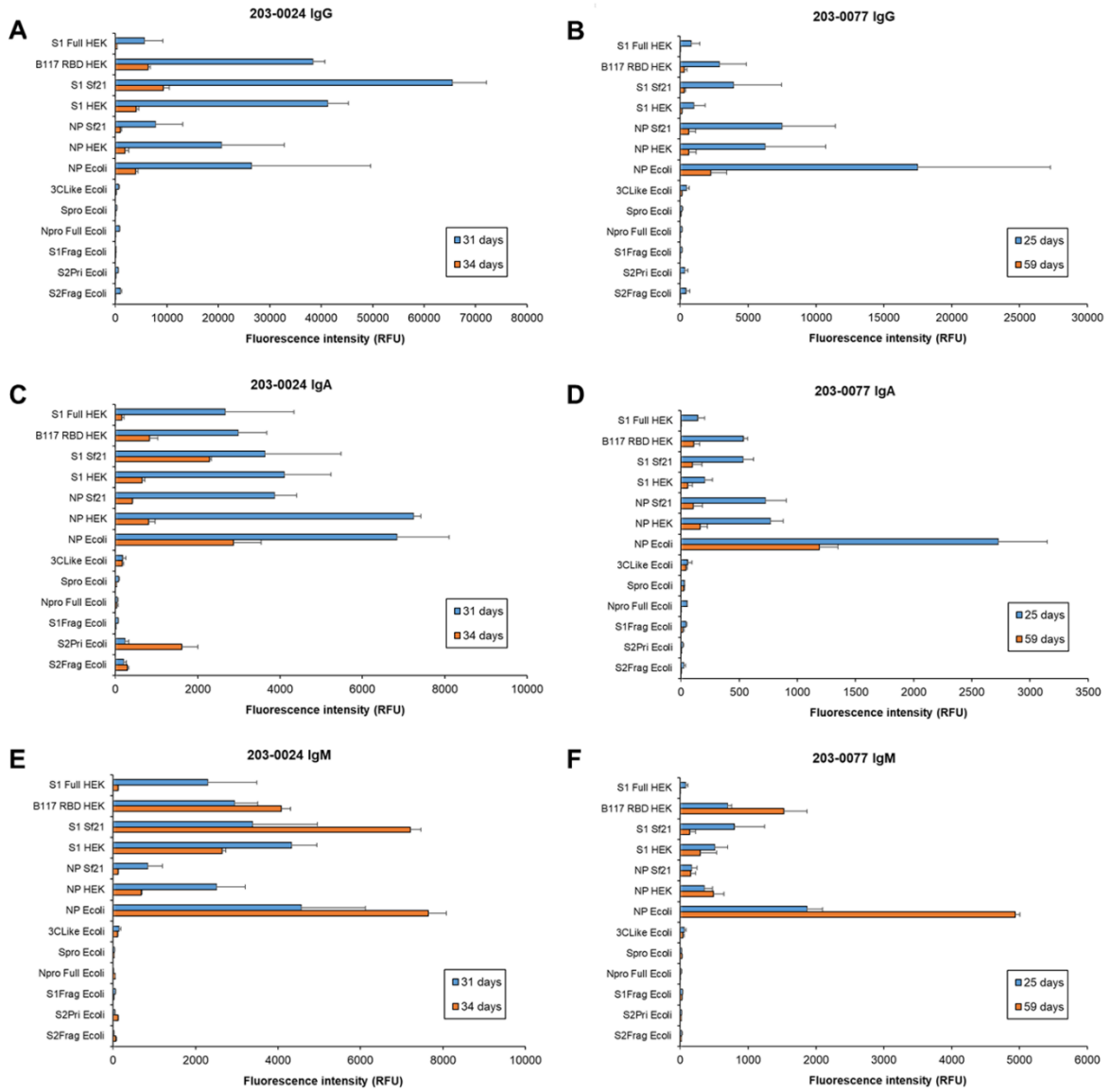


**Fig. S5.** Glycosylation profiling of SARS-CoV-2 antigens produced in mammalian (HEK) and insect (Sf21) cells. Unsupervised clustering of binding intensities of a panel of fluorescently-labelled lectins to recombinant SARS-CoV-2 proteins printed on the antigen microarray. The lectin LFA was non-functional in this format and was disregarded. Normalised data were subjected to unsupervised, Euclidean distance, complete linkage clustering.

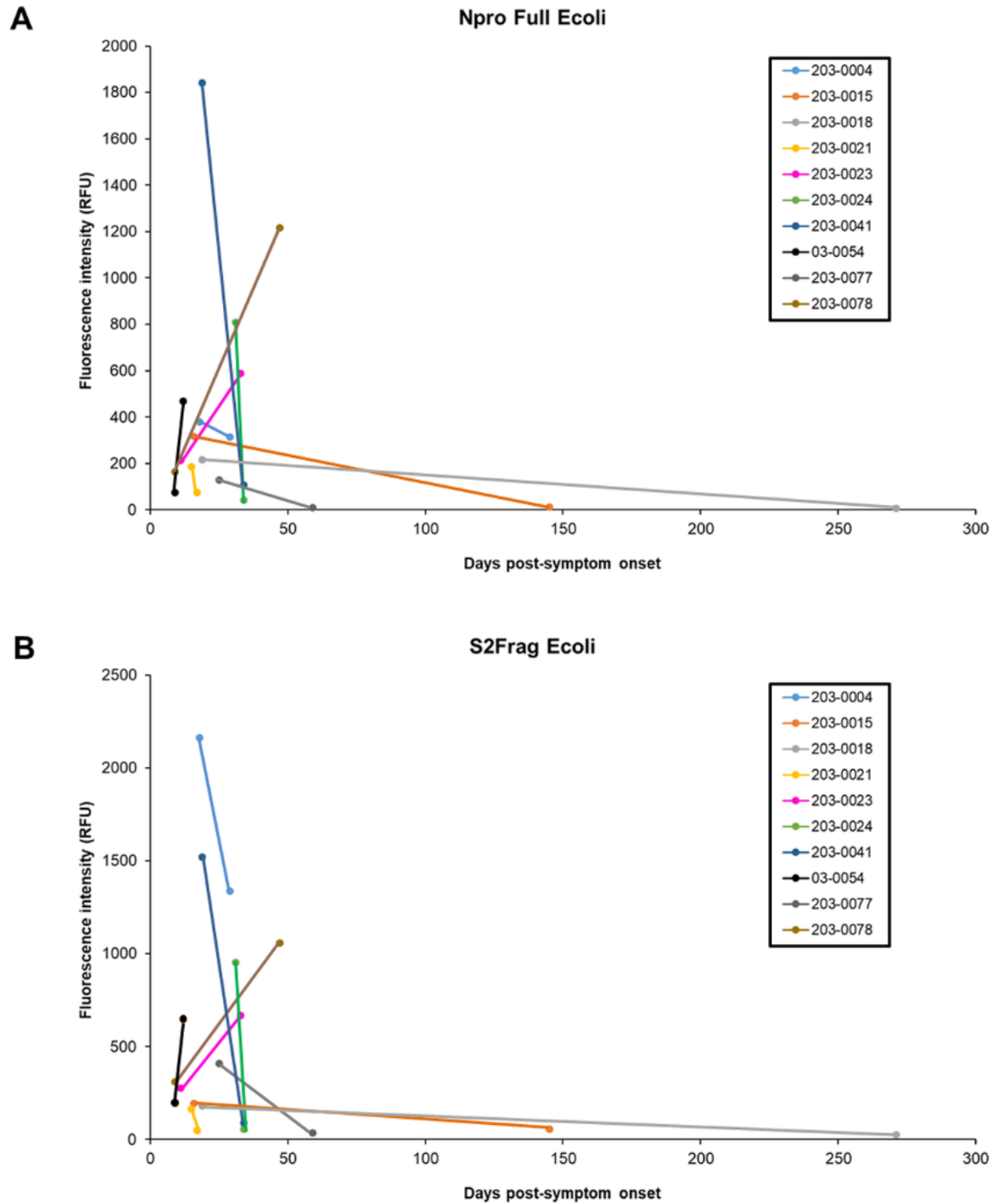


**Fig. S6.** Dynamic binding of patient serum antibody isotypes over short term for severe COVID-19 disease. Bar charts represent binding intensity data for serum (A,B) IgG, (C,D) IgA, and (E,F) IgM binding to SARS-CoV-2 antigens for patient 203-0021 (A,C,D; M, 61-65 years) and 203-0078 (B,D,F; F, 31-35 years) at 15 and 17 days, and 9 and 16 days post-first symptom onset, respectively.





**Fig. S7.** Dynamic binding of patient serum antibody isotypes over medium term for severe and mild COVID-19 disease. Bar charts represent binding intensity data for serum (A,B) IgG, (C,D) IgA, and (E,F) IgM binding to SARS-CoV-2 antigens for patient 203-0024 (A,C,D; severe, F, 66-70 years) and 203-0078 (B,D,F; mild, M, 61-65 years) at 31 and 34 days, and 25 and 59 days post-first symptom onset, respectively.



**Fig. S8.** Variation in IgG binding to (A) Npro Full Ecoli and (B) S2Frag Ecoli for a subset of patient samples.

**Table S1.** Recombinantly expressed SARS-CoV-2 proteins used to construct the antigen (Ag) microarray, the Ag code, approximate print concentration (mg/mL), molecular mass observed by SDS-PAGE, expression system, protein sequence expressed, buffer that the protein was supplied in, supplier, and catalogue number. MPL, Molecular Parasitology Lab; RB, RayBiotech; R&D, R&D Systems.

Ag code	Protein Ag	Print conc	Mr (kDa)	Expression	Sequence	Buffer	Supplier	Cat. no.
Npro Full Ecoli	Nucleocapsid protein, full length	0.06	50	<i>E. coli</i>	2-1269	PBS + 500 mM imidazole	MPL	-
3CLike Ecoli	3C-like protease	0.24	34	<i>E. coli</i>	1-306	PBS	MPL	-
Spro Ecoli	Spike protein, full length	0.12	135	<i>E. coli</i>	10-1282	Potassium phosphate + 0.1% Sarkosyl, pH 7.4	MPL	-
S1Frag Ecoli	Spike protein fragment 1	0.15	75	<i>E. coli</i>	10-686	Potassium phosphate + 0.1% Sarkosyl, pH 7.4	MPL	-
S2Frag Ecoli	Spike protein fragment 2	0.06	54	<i>E. coli</i>	687-1283	Potassium phosphate + 0.1% Sarkosyl, pH 7.4	MPL	-
S2Pri Ecoli	Spike protein fragment 2 prime region	0.01	38	<i>E. coli</i>	816-1283	PBS+0.05% Sarkosyl	MPL	-
NP Ecoli	Nucleocapsid protein	0.95	50	<i>E. coli</i>	Met1-Ala419	PBS	RB	230-01104
NP HEK	Nucleocapsid protein	0.6	50-60	HEK293	Met1-Ala419	PBS	RB	230-30164
NP Sf21	Nucleocapsid protein	0.5	44-53	Sf21	Met1-Ala419	PBS	R&D	10474-CV
S1 HEK	S1 subunit protein	0.5	106-121	HEK293	Val16-Pro681	PBS with trehalose	R&D	10569-CV
S1 Sf21	S1 subunit protein	0.2	78-92	Sf21	Val16-Pro681	PBS with trehalose	R&D	10522-CV
B117 RBD HEK	B.1.1.7 receptor binding domain	0.25	34-38	HEK293	Arg319-Phe541	PBS with trehalose	R&D	10730-CV
S1 Full HEK	S1 subunit protein, full length	0.45	120	HEK293	Val16-Gln690	PBS	RB	230-30161

---

MP Ecoli	Membrane glycoprotein, C-terminal	0.17	15	<i>E. coli</i>	Arg101-Gln222	PBS + 200 mM imidazole	RB	230-01124
----------	--------------------------------------	------	----	----------------	---------------	---------------------------	----	-----------

---

**Table S2.** Lectins used for recombinant SARS-CoV-2 proteins glycoprofiling, their binding specificities and concentrations used ( $\mu\text{g/mL}$ ).

Lectin	Abbreviation	Major binding specificity	Conc.
<i>Griffonia simplicifolia</i> lectin	GSL-I-B4	Terminal $\alpha$ -linked Gal	10
<i>Vigna radiate</i> lectin	VRA	Terminal $\alpha$ -linked Gal	10
<i>Artocarpus integrifolia</i> agglutinin	AIA	Gal- $\beta$ -(1 $\rightarrow$ 3)-GalNAc (T-antigen), $\beta$ -(1 $\rightarrow$ 6)-linked Gal, sialylation independent	15
<i>Arachis hypogaea</i> lectin	PNA	Gal- $\beta$ -(1 $\rightarrow$ 3)-GalNAc (T-antigen) >GalNAc>Lac>Gal, terminal $\beta$ -Gal)	10
<i>Sophora japonica</i> lectin	SJA	$\beta$ -linked GalNAc>Gal	10
<i>Wisteria floribunda</i> agglutinin	WFA	GalNAc (GalNAc- $\alpha$ -(1 $\rightarrow$ 6)-Gal>GalNAc- $\alpha$ -(1 $\rightarrow$ 3)-R GalNAc (Forsmann antigen) >GalNAc>>Lac>Gal, chondroitin sulfate	10
<i>Phaseolus vulgaris</i> lectin	PHA-L	tri-, tetra-antennary $\beta$ -Gal/Gal- $\beta$ -(1 $\rightarrow$ 4)-GlcNAc	10
<i>Griffonia simplicifolia</i> lectin	GSL-II	GlcNAc	10
<i>Triticum vulgaris</i> lectin	WGA	NeuAc/GlcNAc	10
<i>Limax flavus</i> lectin	LFA	NeuAc/NeuGc	10
<i>Maackia amurensis</i> agglutinin	MAA	Neu- $\alpha$ -(2 $\rightarrow$ 3)-Gal = Gal-3-SO <sub>4</sub> >Lac	15
<i>Sambucus nigra</i> agglutinin I	SNA-I	Neu- $\alpha$ -(2 $\rightarrow$ 6)-Gal(NAc) >Lac, GalNAc >Gal	10
<i>Canavalia ensiformis</i> (jack bean lectin)	Con A	$\alpha$ -linked Man>Glc>GlcNAc	10
<i>Hippeastrum hybrid</i> lectin	HHA	Man- $\alpha$ -(1,3)-Man- $\alpha$ -(1,6)-	10
<i>Lotus tetragonolobus</i> lotus lectin	LTA	$\alpha$ -(1 $\rightarrow$ 3)-linked Fuc	10
<i>Ulex europaeus</i> agglutinin I	UEA-I	$\alpha$ -(1 $\rightarrow$ 2)-linked Fuc, H type 2 antigen	10

**Table S4.** Significance of correlation analysis for first sampling point serum IgG samples binding to antigens with low intensity (3CLike Ecoli, Npro Full Ecoli, S1 Frag Ecoli, S2 Frag Ecoli, S2Pri Ecoli, and Spro Ecoli) compared to non-COVID-19 samples (NC). Bold *p* value indicates significant correlation.

<i>Predictors</i>	<i>Estimates</i>	<b>IgG</b>	
		<i>CI</i>	<i>p</i>
(Intercept)	77.83	53.99 – 101.67	<b>&lt;0.001</b>
COVID.19 [Mild]	-36.13	-73.61 – 1.35	0.058
COVID.19 [Moderate]	53.45	17.32 – 89.59	<b>0.005</b>
COVID.19 [Severe]	-15.83	-50.00 – 18.34	0.352
Antigen [Npro Full Ecoli]	-39.05	-64.36 – -13.74	<b>0.003</b>
Antigen [S1Frag Ecoli]	-52.59	-77.90 – -27.28	<b>&lt;0.001</b>
Antigen [S2Frag Ecoli]	-57.60	-82.91 – -32.29	<b>&lt;0.001</b>
Antigen [S2Pri Ecoli]	-52.38	-77.69 – -27.07	<b>&lt;0.001</b>
Antigen [Spro Ecoli]	-56.34	-81.65 – -31.03	<b>&lt;0.001</b>
COVID.19 [Mild] * Antigen [Npro Full Ecoli]	19.82	-18.44 – 58.08	0.309
COVID.19 [Moderate] *Antigen [Npro Full Ecoli]	-71.14	-108.03 – -34.24	<b>&lt;0.001</b>
COVID.19 [Severe] *Antigen [Npro Full Ecoli]	15.05	-19.83 – 49.94	0.397
COVID.19 [Mild] * Antigen [S1Frag Ecoli]	80.40	42.14 – 118.67	<b>&lt;0.001</b>
COVID.19 [Moderate] *Antigen [S1Frag Ecoli]	-52.75	-89.64 – -15.85	<b>0.005</b>
COVID.19 [Severe] *Antigen [S1Frag Ecoli]	44.99	10.10 – 79.88	<b>0.012</b>
COVID.19 [Mild] * Antigen [S2Frag Ecoli]	76.03	37.77 – 114.30	<b>&lt;0.001</b>
COVID.19 [Moderate] *Antigen [S2Frag Ecoli]	-45.17	-82.07 – -8.28	<b>0.017</b>
COVID.19 [Severe] *Antigen [S2Frag Ecoli]	58.58	23.69 – 93.46	<b>0.001</b>
COVID.19 [Mild] * Antigen [S2Pri Ecoli]	63.15	24.88 – 101.41	<b>0.001</b>
COVID.19 [Moderate] *Antigen [S2Pri Ecoli]	-56.01	-92.91 – -19.12	<b>0.003</b>
COVID.19 [Severe] *Antigen [S2Pri Ecoli]	59.34	24.45 – 94.23	<b>0.001</b>
COVID.19 [Mild] * Antigen [Spro Ecoli]	63.97	25.71 – 102.24	<b>0.001</b>
COVID.19 [Moderate] *Antigen [Spro Ecoli]	-44.13	-81.02 – -7.23	<b>0.019</b>
COVID.19 [Severe] *Antigen [Spro Ecoli]	42.76	7.87 – 77.64	<b>0.016</b>
N <sub>id</sub>	34		
Observations	612		

**Table S5.** Significance of correlation analysis for first sampling point serum IgG samples binding to antigens with high intensity (B117 RBD HEK, NP Ecoli, NP HEK, NP Sf21, S1 Full HEK, S1 HEK, and S1 Sf21) compared to non-COVID-19 samples (NC). Bold *p* value indicates significant correlation.

<i>Predictors</i>	<i>Estimates</i>	<b>IgG</b>	
		<i>CI</i>	<i>p</i>
(Intercept)	1229.48	431.16 – 2027.79	<b>0.003</b>
COVID.19 [Mild]	-589.85	-1845.15 – 665.45	0.345
COVID.19 [Moderate]	174.53	-1035.83 – 1384.90	0.770
COVID.19 [Severe]	245.56	-898.94 – 1390.06	0.664
Antigen [NP Ecoli]	4531.91	3914.78 – 5149.04	<b>&lt;0.001</b>
Antigen [NP HEK]	-201.15	-818.28 – 415.99	0.522
Antigen [NP Sf21]	-710.09	-1327.22 – -92.96	<b>0.024</b>
Antigen [S1 Full HEK]	-1041.49	-1658.62 – -424.36	<b>0.001</b>
Antigen [S1 Hek]	-994.09	-1611.22 – -376.95	<b>0.002</b>
Antigen [S1 Sf21]	-410.67	-1027.80 – 206.46	0.192
COVID.19 [Mild] *Antigen [NP Ecoli]	-2010.93	-2943.94 – -1077.91	<b>&lt;0.001</b>
COVID.19 [Moderate] *Antigen [NP Ecoli]	-1984.75	-2884.36 – -1085.13	<b>&lt;0.001</b>
COVID.19 [Severe] *Antigen [NP Ecoli]	-399.88	-1250.54 – 450.78	0.356
COVID.19 [Mild] * Antigen [NP HEK]	432.73	-500.29 – 1365.74	0.363
COVID.19 [Moderate] *Antigen [NP HEK]	-137.27	-1036.88 – 762.35	0.765
COVID.19 [Severe] *Antigen [NP HEK]	1381.22	530.56 – 2231.88	<b>0.001</b>
COVID.19 [Mild] * Antigen [NP Sf21]	516.01	-417.01 – 1449.02	0.278
COVID.19 [Moderate] *Antigen [NP Sf21]	301.42	-598.20 – 1201.04	0.511
COVID.19 [Severe] *Antigen [NP Sf21]	684.68	-165.98 – 1535.34	0.114
COVID.19 [Mild] * Antigen [S1 Full HEK]	823.52	-109.49 – 1756.54	0.084
COVID.19 [Moderate] *Antigen [S1 Full HEK]	-304.15	-1203.77 – 595.46	0.507
COVID.19 [Severe] *Antigen [S1 Full HEK]	-55.03	-905.69 – 795.62	0.899
COVID.19 [Mild] * Antigen [S1 HEK]	1081.81	148.80 – 2014.83	<b>0.023</b>
COVID.19 [Moderate] *Antigen [S1 HEK]	94.92	-804.70 – 994.53	0.836
COVID.19 [Severe] *Antigen [S1 HEK]	571.77	-278.89 – 1422.42	0.187
COVID.19 [Mild] * Antigen [S1 Sf21]	563.84	-369.18 – 1496.85	0.236

COVID.19 [Moderate] *Antigen [S1 Sf21]	1187.56	287.95 – 2087.18	<b>0.010</b>
COVID.19 [Severe] *Antigen [S1 Sf21]	1536.96	686.30 – 2387.62	<b>&lt;0.001</b>
N <sub>id</sub>	34		
Observations	714		



**Table S6.** Significance of correlation analysis for first sampling point serum IgA samples binding to antigens with low intensity (3CLike Ecoli, Npro Full Ecoli, S1 Frag Ecoli, S2 Frag Ecoli, S2Pri Ecoli, and Spro Ecoli) compared to non-COVID-19 (NC) samples. Bold *p* value indicates significant correlation.

<i>Predictors</i>	<i>Estimates</i>	<b>IgA</b>	
		<i>CI</i>	<i>p</i>
(Intercept)	483.97	192.70 – 775.23	<b>0.001</b>
COVID.19 [Mild]	102.62	-355.23 – 560.47	0.650
COVID.19 [Moderate]	995.78	554.32 – 1437.24	<b>&lt;0.001</b>
COVID.19 [Severe]	0.29	-417.15 – 417.72	0.999
Antigen [Npro Full Ecoli]	-372.02	-682.44 – -61.59	<b>0.019</b>
Antigen [S1Frag Ecoli]	-431.12	-741.55 – -120.70	<b>0.007</b>
Antigen [S2Frag Ecoli]	-287.50	-597.92 – 22.93	0.069
Antigen [S2Pri Ecoli]	-283.09	-593.52 – 27.33	0.074
Antigen [Spro Ecoli]	-443.22	-753.65 – -132.80	<b>0.005</b>
COVID.19 [Mild] * Antigen [Npro Full Ecoli]	206.66	-262.66 – 675.98	0.387
COVID.19 [Moderate] *Antigen [Npro Full Ecoli]	-905.28	-1357.80 – -452.76	<b>&lt;0.001</b>
COVID.19 [Severe] *Antigen [Npro Full Ecoli]	170.46	-257.43 – 598.36	0.434
COVID.19 [Mild] * Antigen [S1Frag Ecoli]	-67.87	-537.19 – 401.45	0.776
COVID.19 [Moderate] *Antigen [S1Frag Ecoli]	-916.57	-1369.09 – -464.05	<b>&lt;0.001</b>
COVID.19 [Severe] *Antigen [S1Frag Ecoli]	16.14	-411.75 – 444.03	0.941
COVID.19 [Mild] * Antigen [S2Frag Ecoli]	176.54	-292.78 – 645.86	0.460
COVID.19 [Moderate] *Antigen [S2Frag Ecoli]	-785.90	-1238.42 – -333.38	<b>0.001</b>
COVID.19 [Severe] *Antigen [S2Frag Ecoli]	282.46	-145.43 – 710.35	0.195
COVID.19 [Mild] *Antigen [S2Pri Ecoli]	8.25	-461.07 – 477.57	0.972
COVID.19 [Moderate] *Antigen [S2Pri Ecoli]	-850.66	-1303.18 – -398.15	<b>&lt;0.001</b>
COVID.19 [Severe] *Antigen [S2Pri Ecoli]	505.82	77.93 – 933.71	<b>0.021</b>
COVID.19 [Mild] *Antigen [Spro Ecoli]	-18.40	-487.72 – 450.92	0.939
COVID.19 [Moderate] *Antigen [Spro Ecoli]	-866.72	-1319.24 – -414.20	<b>&lt;0.001</b>
COVID.19 [Severe] *Antigen [Spro Ecoli]	78.89	-349.00 – 506.78	0.717
N <sub>id</sub>	34		
Observations	612		

**Table S7.** Significance of correlation analysis for first sampling point serum IgA samples binding to antigens with high intensity (B117 RBD HEK, NP Ecoli, NP HEK, NP Sf21, S1 Full HEK, S1 HEK, and S1 Sf21) compared to non-COVID-19 samples (NC). Bold *p* value indicates significant correlation.

<i>Predictors</i>	<i>Estimates</i>	<b>IgA</b>	
		<i>CI</i>	<i>p</i>
(Intercept)	2923.08	-3469.64 – 9315.81	0.370
COVID.19 [Mild]	1262.03	-8790.16 – 11314.22	0.799
COVID.19 [Moderate]	8141.82	-1550.54 – 17834.17	0.097
COVID.19 [Severe]	15722.54	6557.67 – 24887.42	<b>0.001</b>
Antigen [NP Ecoli]	9101.42	4381.07 – 13821.77	<b>&lt;0.001</b>
Antigen [NP HEK]	804.24	-3916.11 – 5524.59	0.738
Antigen [NP Sf21]	-744.45	-5464.80 – 3975.90	0.757
Antigen [S1 Full HEK]	-2210.84	-6931.19 – 2509.51	0.358
Antigen [S1 Hek]	-2322.92	-7043.28 – 2397.43	0.334
Antigen [S1 Sf21]	-568.70	-5289.05 – 4151.65	0.813
COVID.19 [Mild] * Antigen [NP Ecoli]	1777.22	-5359.28 – 8913.71	0.625
COVID.19 [Moderate] *Antigen [NP Ecoli]	6631.45	-249.58 – 13512.49	0.059
COVID.19 [Severe] *Antigen [NP Ecoli]	2805.48	-3701.08 – 9312.03	0.397
COVID.19 [Mild] * Antigen [NP HEK]	2800.65	-4335.85 – 9937.15	0.441
COVID.19 [Moderate] *Antigen [NP HEK]	2122.99	-4758.05 – 9004.02	0.545
COVID.19 [Severe] *Antigen [NP HEK]	-4032.48	-10539.03 – 2474.08	0.224
COVID.19 [Mild] *Antigen [NP Sf21]	1428.80	-5707.70 – 8565.30	0.694
COVID.19 [Moderate] *Antigen [NP Sf21]	2052.18	-4828.86 – 8933.21	0.558
COVID.19 [Severe] *Antigen [NP Sf21]	-7715.67	-14222.23 – -1209.12	<b>0.020</b>
COVID.19 [Mild] *Antigen [S1 Full HEK]	-645.71	-7782.21 – 6490.79	0.859
COVID.19 [Moderate] *Antigen [S1 Full HEK]	-8431.77	-15312.81 – -1550.74	<b>0.016</b>
COVID.19 [Severe] *Antigen [S1 Full HEK]	-15285.98	-21792.54 – -8779.43	<b>&lt;0.001</b>
COVID.19 [Mild] * Antigen [S1 HEK]	4448.66	-2687.84 – 11585.16	0.221
COVID.19 [Moderate] *Antigen [S1 HEK]	-3845.54	-10726.58 – 3035.49	0.273
COVID.19 [Severe] *Antigen [S1 HEK]	-1546.90	-8053.46 – 4959.65	0.641
COVID.19 [Mild] *Antigen [S1 Sf21]	4188.98	-2947.52 – 11325.48	0.250

COVID.19 [Moderate] *Antigen [S1 Sf21]	3432.85	-3448.19 – 10313.88	0.328
COVID.19 [Severe] *Antigen [S1 Sf21]	10480.62	3974.07 – 16987.18	<b>0.002</b>
N <sub>id</sub>	34		
Observations	714		

**Table S8.** Significance of correlation analysis for first sampling point serum IgM samples binding to antigens with low intensity (3CLike Ecoli, Npro Full Ecoli, S1 Frag Ecoli, S2 Frag Ecoli, S2Pri Ecoli, and Spro Ecoli) compared to non-COVID-19 samples (NC). Bold *p* value indicates significant correlation.

<i>Predictors</i>	<i>Estimates</i>	<b>IgM</b>	
		<i>CI</i>	<i>p</i>
(Intercept)	82.21	61.80 – 102.62	<b>&lt;0.001</b>
COVID.19 [Mild]	46.65	14.57 – 78.73	<b>0.006</b>
COVID.19 [Moderate]	-31.78	-62.71 – -0.85	<b>0.044</b>
COVID.19 [Severe]	17.79	-11.47 – 47.04	0.224
Antigen [Npro Full Ecoli]	-53.19	-73.04 – -33.34	<b>&lt;0.001</b>
Antigen [S1Frag Ecoli]	-60.68	-80.53 – -40.83	<b>&lt;0.001</b>
Antigen [S2Frag Ecoli]	-47.51	-67.36 – -27.66	<b>&lt;0.001</b>
Antigen [S2Pri Ecoli]	-37.66	-57.51 – -17.81	<b>&lt;0.001</b>
Antigen [Spro Ecoli]	-61.98	-81.83 – -42.13	<b>&lt;0.001</b>
COVID.19 [Mild] * Antigen [Npro Full Ecoli]	-67.02	-97.03 – -37.01	<b>&lt;0.001</b>
COVID.19 [Moderate] *Antigen [Npro Full Ecoli]	15.23	-13.70 – 44.17	0.302
COVID.19 [Severe] *Antigen [Npro Full Ecoli]	-1.35	-28.71 – 26.01	0.923
COVID.19 [Mild] *Antigen [S1Frag Ecoli]	-8.29	-38.30 – 21.72	0.588
COVID.19 [Moderate] *Antigen [S1Frag Ecoli]	34.59	5.65 – 63.53	<b>0.019</b>
COVID.19 [Severe] *Antigen [S1Frag Ecoli]	11.96	-15.40 – 39.32	0.391
COVID.19 [Mild] * Antigen [S2Frag Ecoli]	-47.83	-77.84 – -17.82	<b>0.002</b>
COVID.19 [Moderate] *Antigen [S2Frag Ecoli]	37.51	8.57 – 66.45	<b>0.011</b>
COVID.19 [Severe] *Antigen [S2Frag Ecoli]	-19.80	-47.16 – 7.56	0.156
COVID.19 [Mild] * Antigen [S2Pri Ecoli]	-52.67	-82.69 – -22.66	<b>0.001</b>
COVID.19 [Moderate] *Antigen [S2Pri Ecoli]	38.44	9.50 – 67.37	<b>0.009</b>
COVID.19 [Severe] *Antigen [S2Pri Ecoli]	-17.13	-44.50 – 10.23	0.219
COVID.19 [Mild] * Antigen [Spro Ecoli]	-26.12	-56.13 – 3.89	0.088
COVID.19 [Moderate] *Antigen [Spro Ecoli]	36.00	7.06 – 64.94	<b>0.015</b>
COVID.19 [Severe] *Antigen [Spro Ecoli]	-4.09	-31.46 – 23.27	0.769
N <sub>id</sub>	34		
Observations	612		

**Table S9.** Significance of correlation analysis for first sampling point serum IgM samples binding to antigens with high intensity (B117 RBD HEK, NP Ecoli, NP HEK, NP Sf21, S1 Full HEK, S1 HEK, and S1 Sf21) compared to non-COVID-19 samples (NC). Bold *p* value indicates significant correlation.

<i>Predictors</i>	<i>Estimates</i>	<b>IgM</b>	
		<i>CI</i>	<i>p</i>
(Intercept)	305.50	-617.69 – 1228.69	0.516
COVID.19 [Mild]	647.38	-804.29 – 2099.04	0.370
COVID.19 [Moderate]	1475.50	75.80 – 2875.20	<b>0.039</b>
COVID.19 [Severe]	1980.25	656.72 – 3303.77	<b>0.005</b>
Antigen [NP Ecoli]	3772.64	3062.98 – 4482.31	<b>&lt;0.001</b>
Antigen [NP HEK]	266.87	-442.80 – 976.53	0.461
Antigen [NP Sf21]	-180.83	-890.49 – 528.84	0.617
Antigen [S1 Full HEK]	-217.19	-926.86 – 492.47	0.548
Antigen [S1 Hek]	-179.72	-889.39 – 529.95	0.619
Antigen [S1 Sf21]	-67.29	-776.95 – 642.38	0.852
COVID.19 [Mild] * Antigen [NP Ecoli]	-638.41	-1711.32 – 434.51	0.243
COVID.19 [Moderate] *Antigen [NP Ecoli]	-1286.73	-2321.24 – -252.23	<b>0.015</b>
COVID.19 [Severe] *Antigen [NP Ecoli]	-629.14	-1607.35 – 349.07	0.207
COVID.19 [Mild] * Antigen [NP HEK]	-479.05	-1551.97 – 593.86	0.381
COVID.19 [Moderate] *Antigen [NP HEK]	-1474.74	-2509.25 – -440.23	<b>0.005</b>
COVID.19 [Severe] *Antigen [NP HEK]	-214.26	-1192.47 – 763.94	0.667
COVID.19 [Mild] * Antigen [NP Sf21]	-653.36	-1726.28 – 419.55	0.232
COVID.19 [Moderate] *Antigen [NP Sf21]	-1231.12	-2265.63 – -196.62	<b>0.020</b>
COVID.19 [Severe] *Antigen [NP Sf21]	-1271.87	-2250.07 – -293.66	<b>0.011</b>
COVID.19 [Mild] * Antigen [S1 Full HEK]	-292.00	-1364.92 – 780.91	0.593
COVID.19 [Moderate] *Antigen [S1 Full HEK]	-1532.50	-2567.01 – -497.99	<b>0.004</b>
COVID.19 [Severe] *Antigen [S1 Full HEK]	-1772.80	-2751.01 – -794.59	<b>&lt;0.001</b>
COVID.19 [Mild] * Antigen [S1 Hek]	203.68	-869.23 – 1276.60	0.709
COVID.19 [Moderate] *Antigen [S1 Hek]	-410.73	-1445.24 – 623.78	0.436
COVID.19 [Severe] *Antigen [S1 Hek]	-375.87	-1354.08 – 602.33	0.451
COVID.19 [Mild] * Antigen [S1 Sf21]	299.37	-773.55 – 1372.28	0.584

COVID.19 [Moderate] *Antigen [S1 Sf21]	16.73	-1017.78 – 1051.23	0.975
COVID.19 [Severe] *Antigen [S1 Sf21]	1549.98	571.77 – 2528.19	<b>0.002</b>
N <sub>id</sub>	34		
Observations	714		

**Table S10.** Serum sample information including follow up samples. Biobank code, COVID-19 disease status of individual at sampling time, days post-symptoms onset at sampling time, biological sex (M, male; F, female), patient age range at time of sampling, and serum IgG, IgA, and IgM concentration. N.d., not detectable; n.a., not assayed.

Code	Disease	Days	Sex	Age range	Serum Ig conc (mg/mL)		
					IgG	IgA	IgM
203-0041-1	Mild	19	M	76-80	32.16	47.21	1.86
203-0041-3	Mild	34	M	76-80	5.14	6.53	0.24
203-0077-1	Mild	25	M	61-65	3.26	6.07	0.09
203-0077-3	Mild	59	M	61-65	1.13	1.63	0.16
203-0054-1	Moderate	9	M	46-50	13.26	4.07	0.31
203-0054-2	Moderate	12	M	46-50	113.33	45.92	4.49
203-0004-1	Severe	18	M	41-45	51.30	25.68	2.78
203-0004-2	Severe	29	M	41-45	8.11	2.20	0.27
203-0015-2	Severe	16	M	66-70	75.25	31.57	4.83
203-0015-4	Severe	145	M	66-70	1.13	1.62	0.17
203-0018-1	Severe	19	M	66-70	30.53	20.31	0.71
203-0018-4	Severe	271	M	66-70	1.00	0.52	n.d.
203-0021-1	Severe	15	M	61-65	50.99	12.93	3.71
203-0021-2	Severe	17	M	61-65	56.13	2.89	0.35
203-0023-1	Severe	11	F	56-60	58.52	48.17	1.79
203-0023-3	Severe	33	F	56-60	28.49	7.73	0.46
203-0024-1	Severe	31	F	66-70	83.84	29.13	3.61
203-0024-2	Severe	34	F	66-70	n.a.	9.08	1.55
203-0078-2	Severe	9	F	31-35	23.08	8.30	1.80
203-0078-3	Severe	16	F	31-35	66.61	19.34	4.03