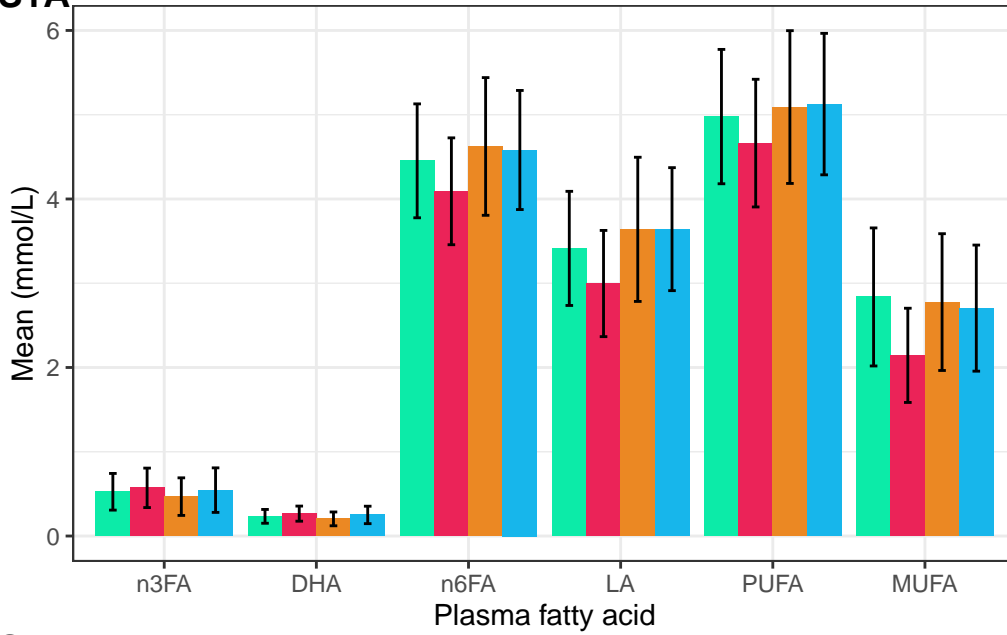


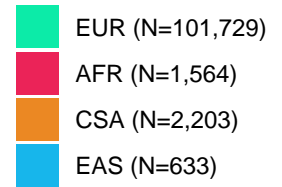
**Supplementary figures for the manuscript:  
Fifty-one novel, replicated loci identified in genome-wide association study of  
polyunsaturated and monounsaturated fatty acids in 124,024 European individuals  
Francis et al. (2022)**

	<u>PAGE</u>
<b>S1. Participant characteristics for PUFA and MUFA traits of four ancestries in UK Biobank.</b> (A) Mean and standard deviation (SD) of polyunsaturated fatty acid (PUFA) and monounsaturated fatty acid (MUFA) traits that were measured in absolute concentration units (mmol/L). (B) Left: mean percentage and SD of each trait measured in percentage of total amount of fatty acids. Right: Mean of ratio-based traits and SD of these values.	2
<b>S2. Correlation plot comparing <math>P</math>-values of our Models 2 versus Model 1.</b> GWAS $-\log_{10}(P)$ between two sensitivity models were compared. Each plot is one of fourteen traits analyzed in the UK Biobank European discovery stage. Each point represents one variant. Spearman's Rho (R) and correlation $P$ -value shown.	3
<b>S3. Manhattan and QQ plots of UK Biobank discovery (EUR) dataset.</b> Left: Manhattan plots showing the $-\log_{10}(P)$ of associations in each of fourteen polyunsaturated fatty acid (PUFA) and monounsaturated fatty acid (MUFA) traits in the UK Biobank European discovery cohort. Alternating point color shades indicate associations across 22 chromosomes. Red line at $P=1.678*10^{-8}$ indicates genome-wide significance threshold corrected for number of effective traits. Right: Quantile-quantile (QQ) plots showing observed versus expected distributions of association $P$ -values for each trait. Genomic control ( $\lambda$ ) and linkage disequilibrium score regression intercept are shown. $N_{UKB-EUR} = 101,729$ .	5
<b>S4. Manhattan and QQ plots of three UK Biobank multi-ancestry cohorts.</b> Manhattan plots showing the $-\log_{10}(P)$ across 22 chromosomes for associations in each of fourteen polyunsaturated fatty acid (PUFA) and monounsaturated fatty acid (MUFA) traits in three UK Biobank multi-ancestry cohorts: African (AFR); Central and South Asian (CSA); and East Asian (EAS). Red line at $P < 1.678*10^{-8}$ shows genome-wide significance threshold corrected for number of effective traits. Right: Quantile-quantile (QQ) plots showing observed versus expected distributions of association $P$ -values for each trait. $N_{UKB-AFR} = 1,564$ ; $N_{UKB-CSA} = 2,203$ ; $N_{UKB-EAS} = 633$ .	9
<b>S5. <i>ACLS6</i> novel association with omega-3 fatty acids.</b> Regional Manhattan plot showing local associations between genes in close proximity to <i>ACLS6</i> and omega-3 fatty acids in the meta-analysis GWAS of three European cohorts.	20
<b>S6. S-MultiXcan gene-based Manhattan plots.</b> Manhattan plots showing $-\log_{10}(P)$ of significant associations between gene expression levels and summary statistics from fourteen polyunsaturated fatty acid (PUFA) and monounsaturated fatty acid (MUFA) traits in the UK Biobank discovery cohort. The red line indicates the corrected significance threshold at $P < 7.68 *10^{-7}$ . The most significant genes for each 5Mb window of significant associations are labeled. Alternating color shades designate breaks between chromosomes.	21
<b>S7. Tissue expression analysis for meta-analyzed traits.</b> Significant tissue-expression specificity by tissue type for five meta-analyzed polyunsaturated fatty acid (PUFA) and monounsaturated fatty acid (MUFA) traits. Plots were created by MAGMA. Liver is the only significant tissue type identified in these traits.	28

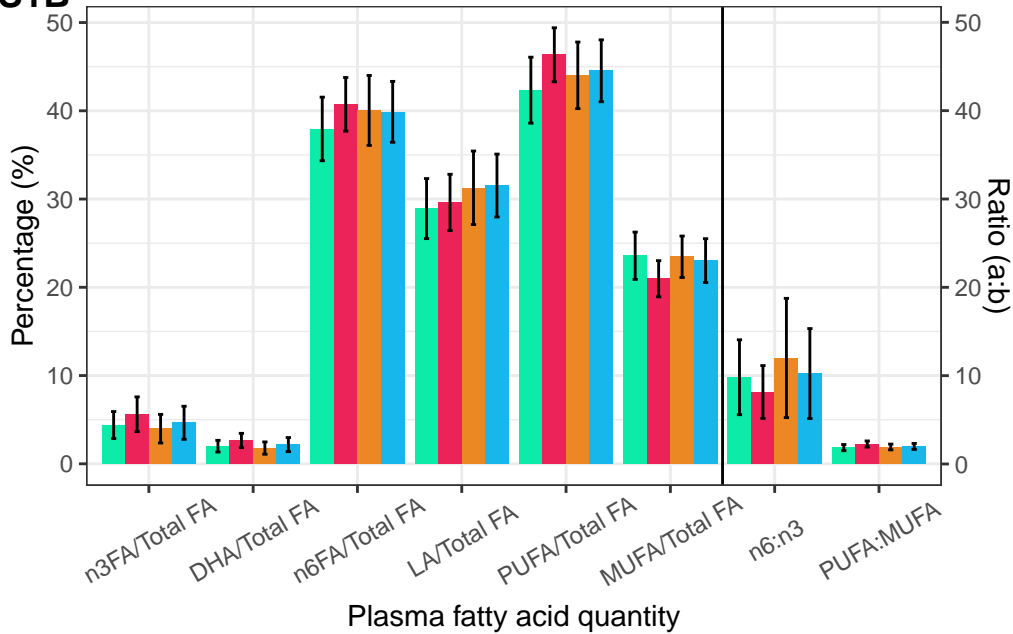
**S1A**

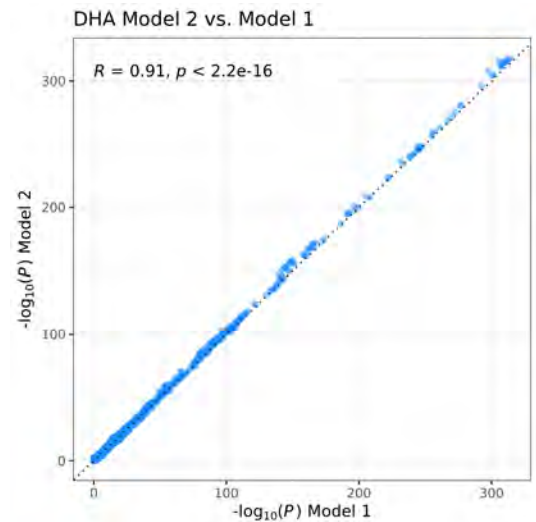
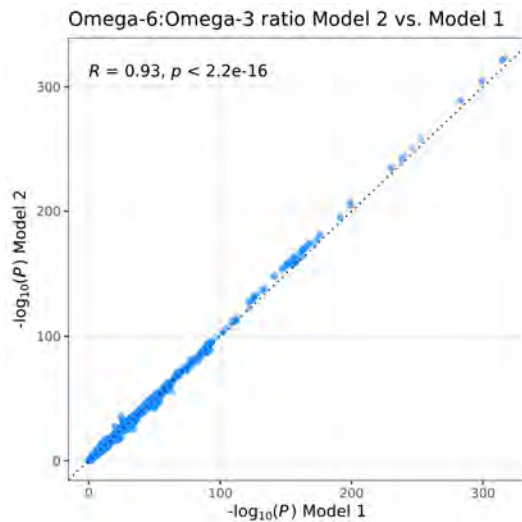
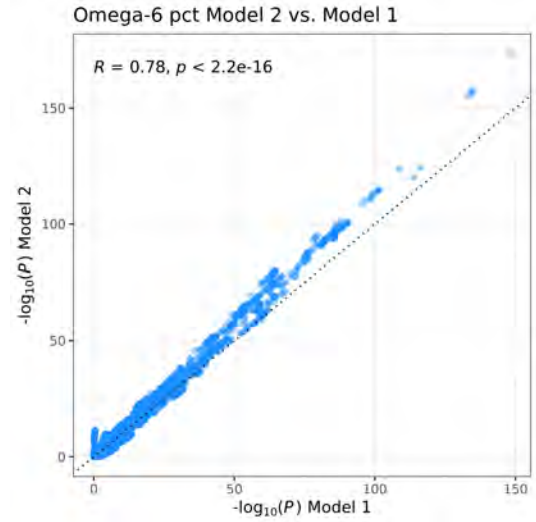
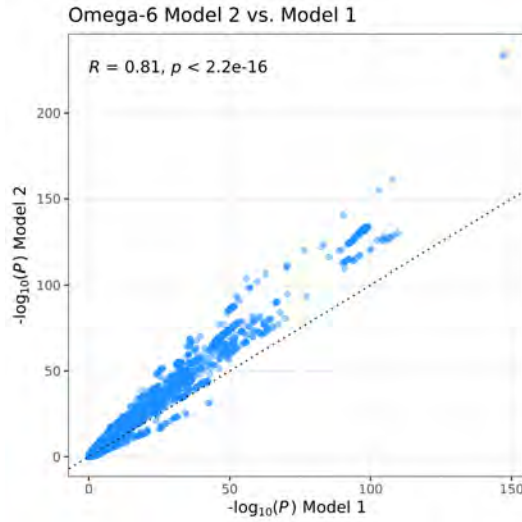
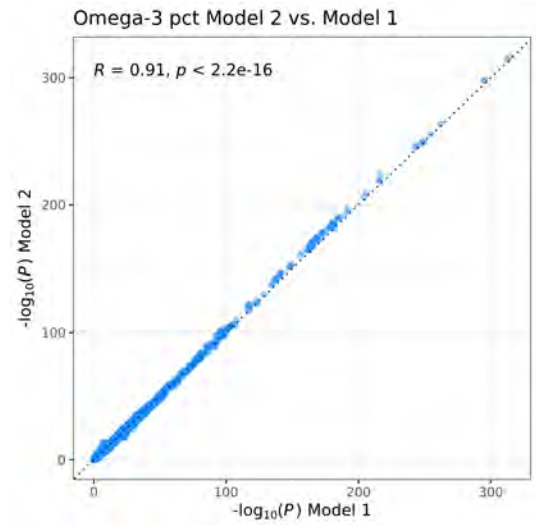
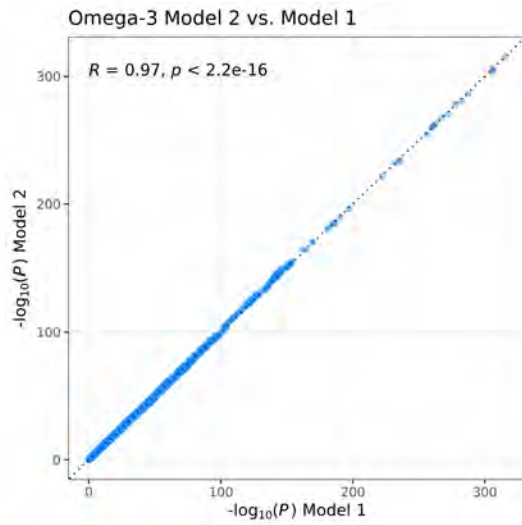


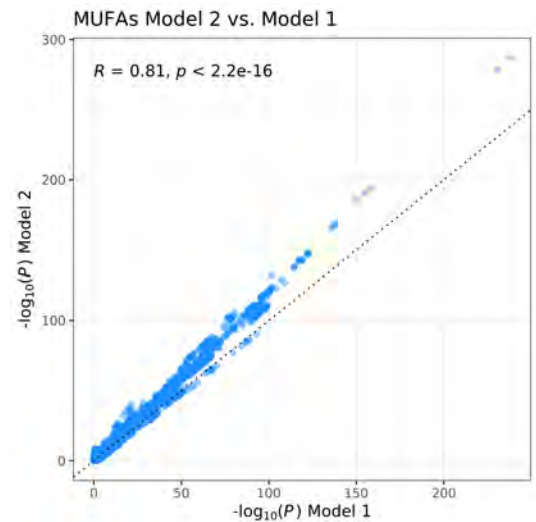
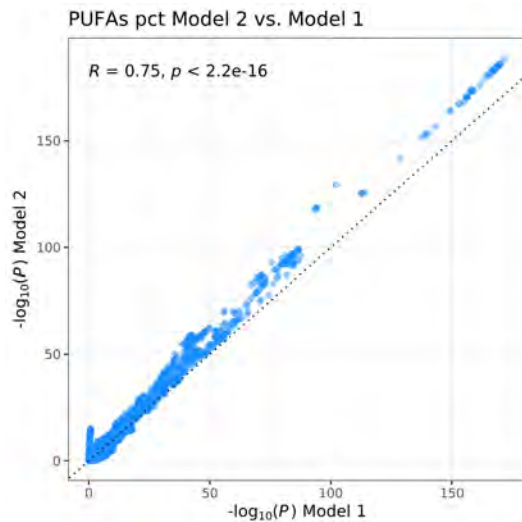
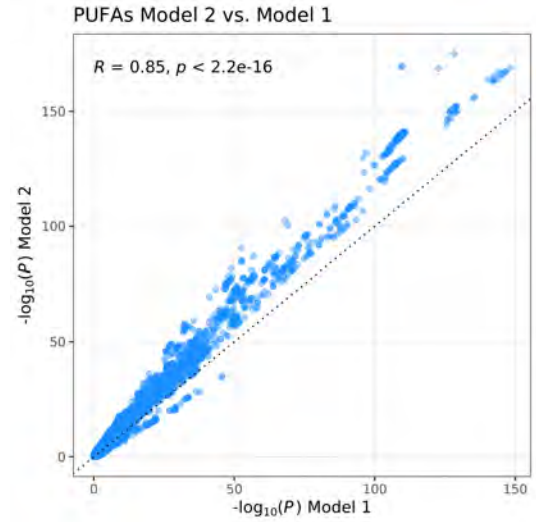
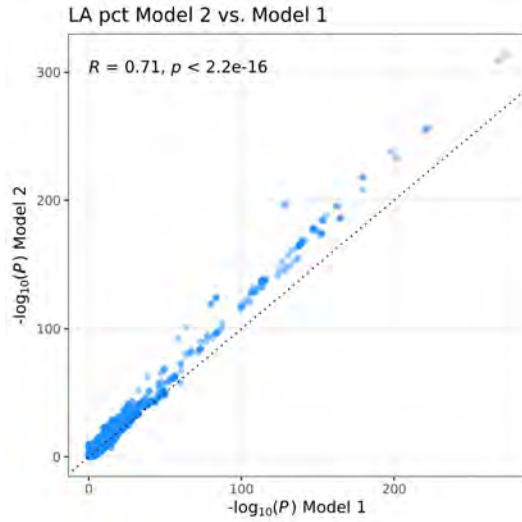
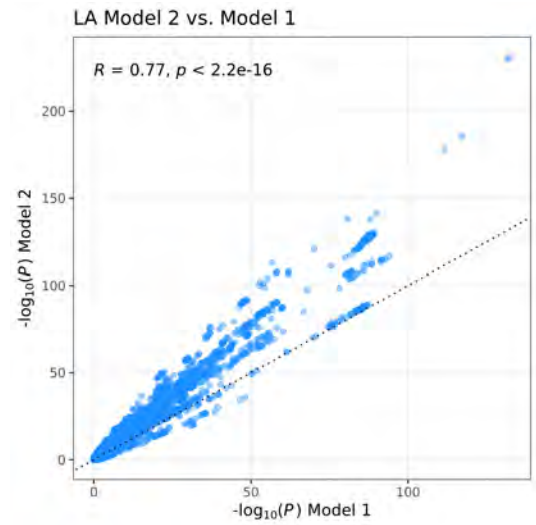
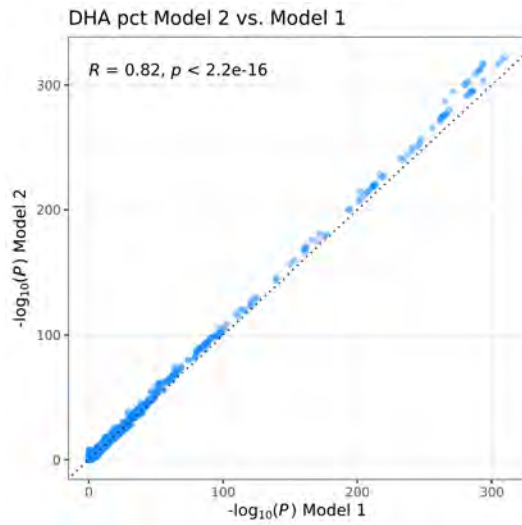
UKB ancestry

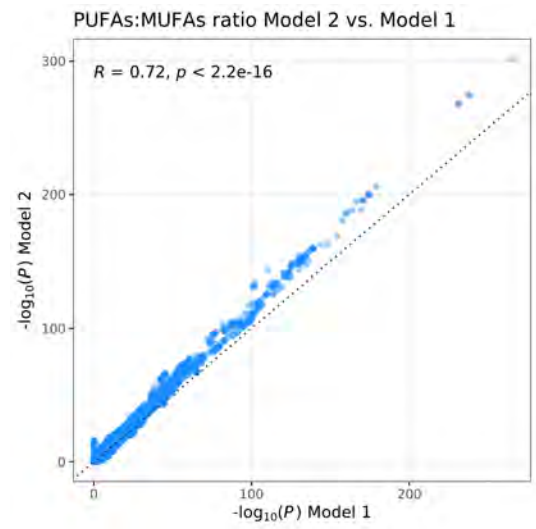
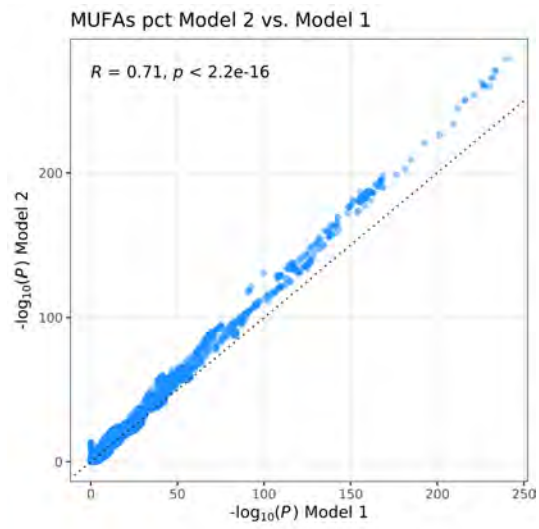


**S1B**

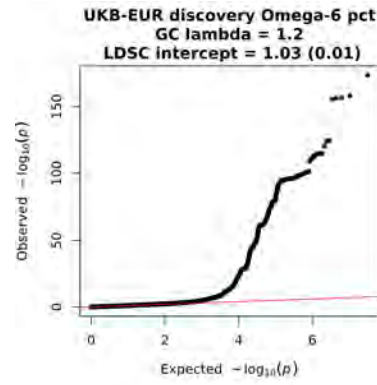
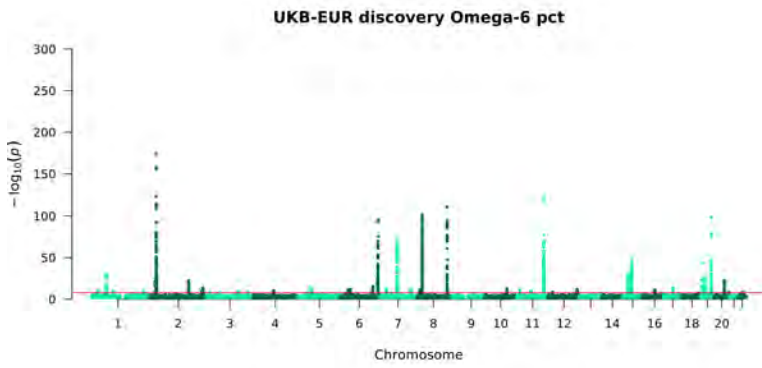
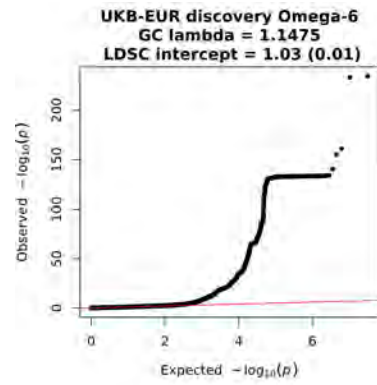
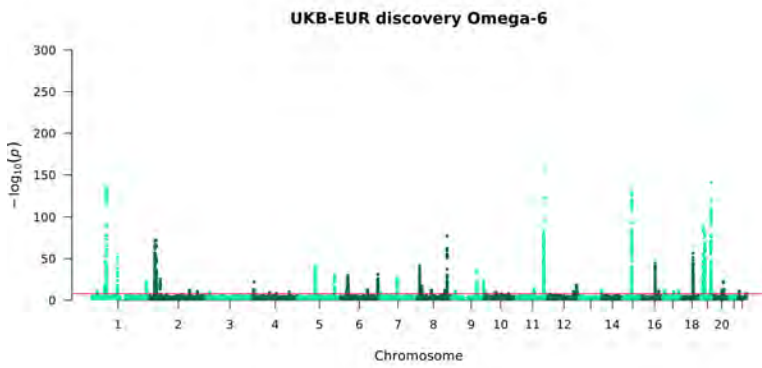
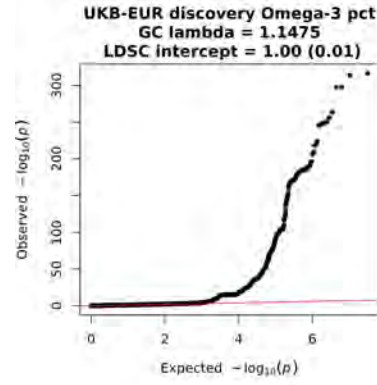
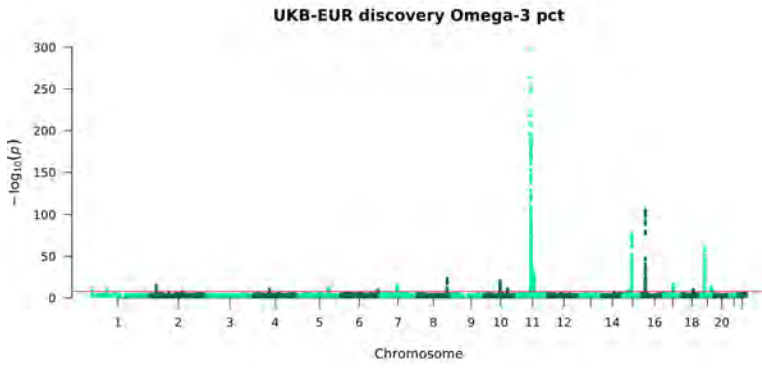
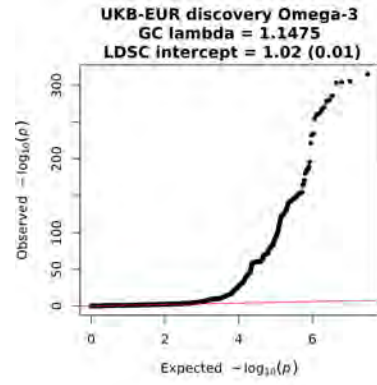
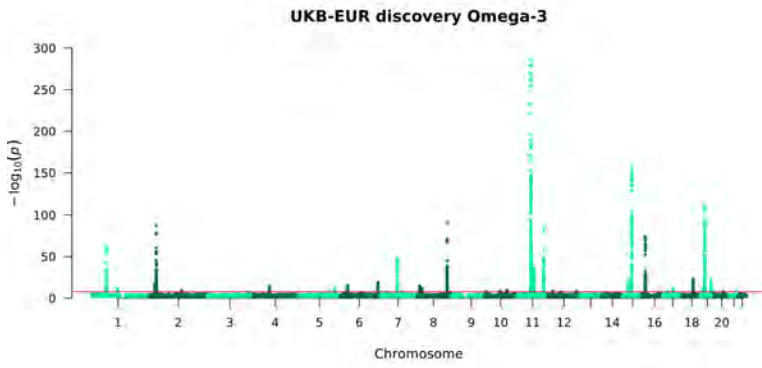


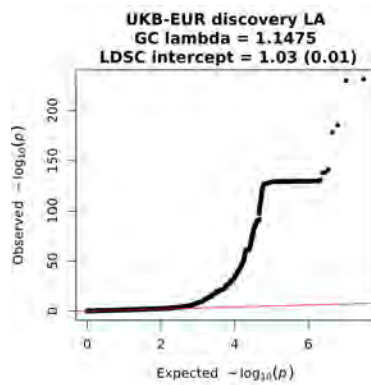
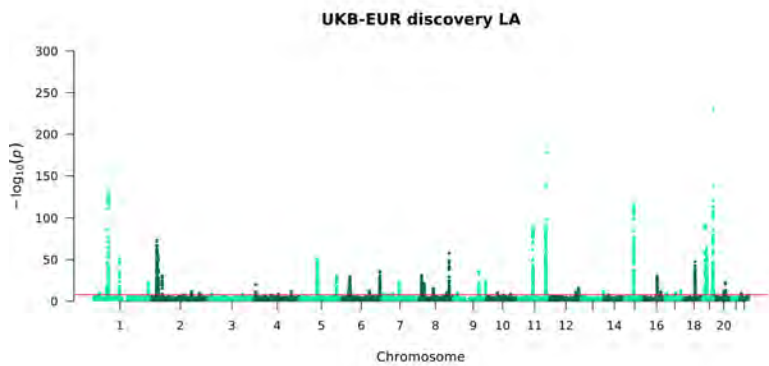
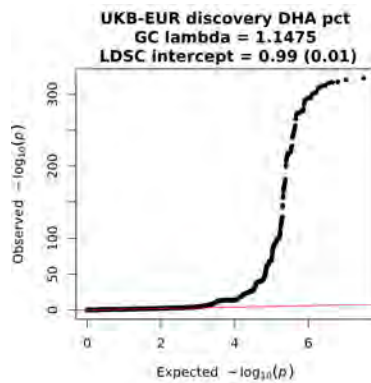
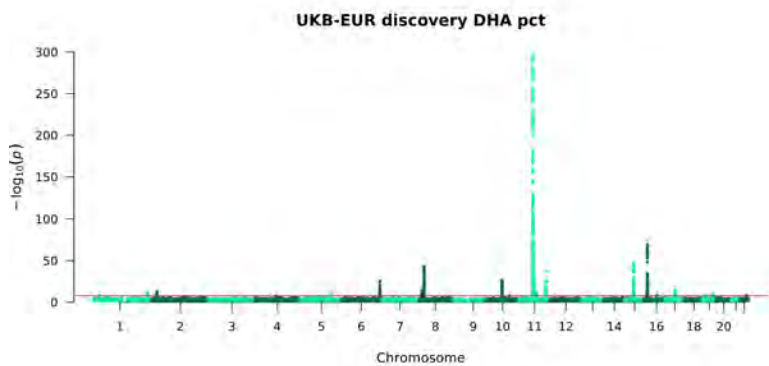
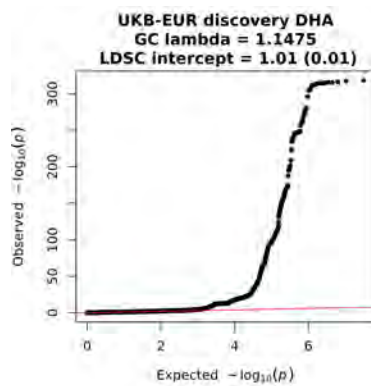
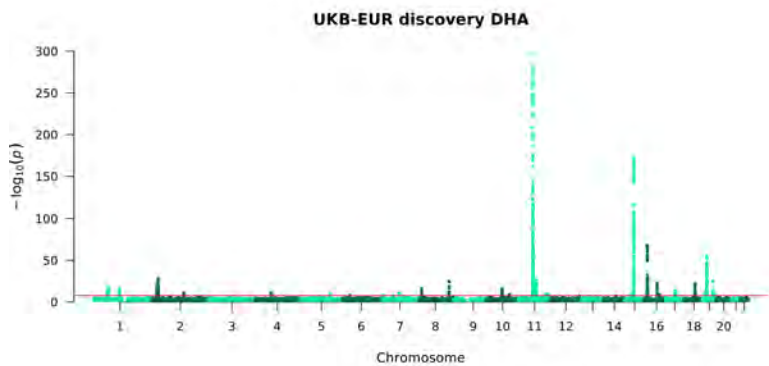
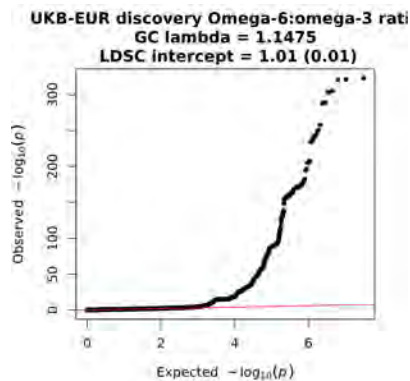
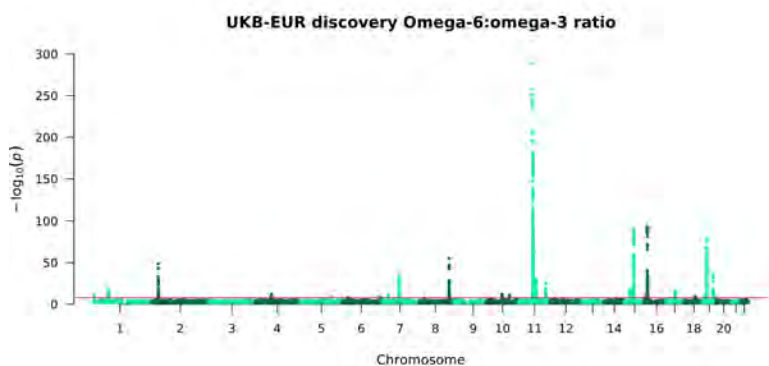
**S2**

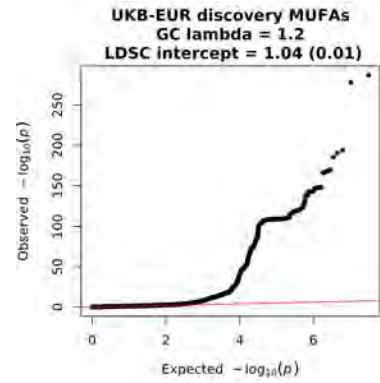
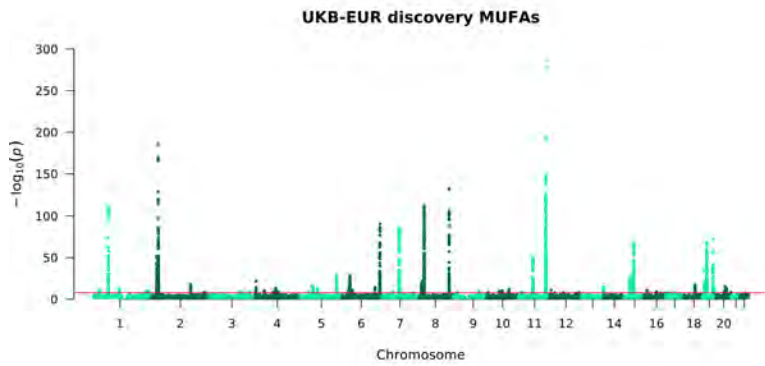
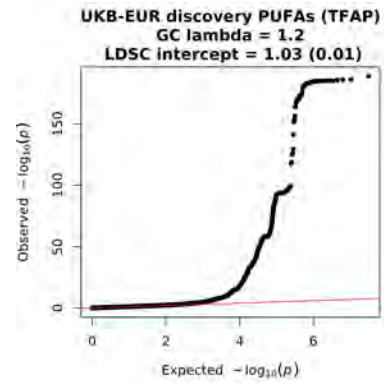
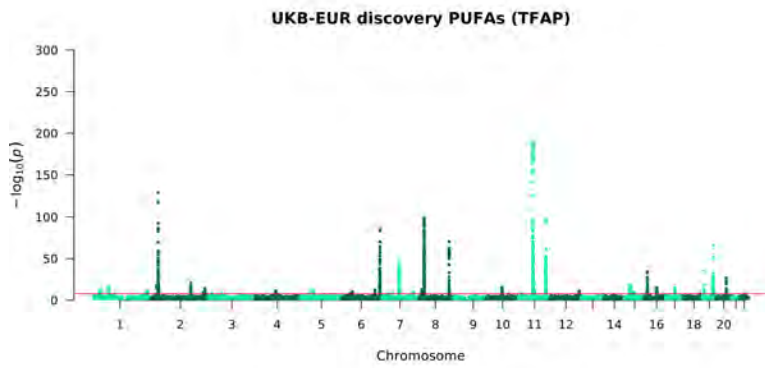
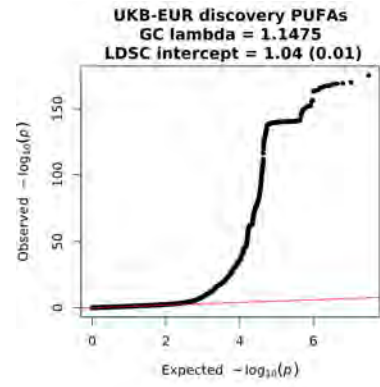
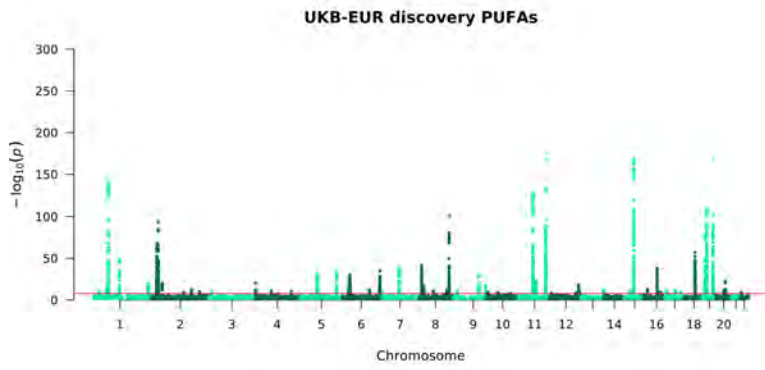
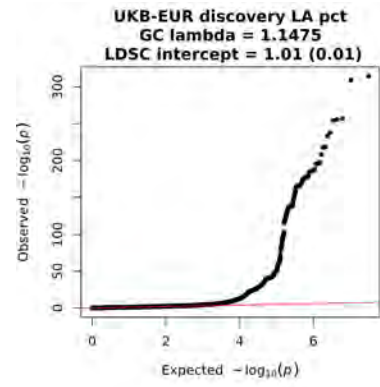
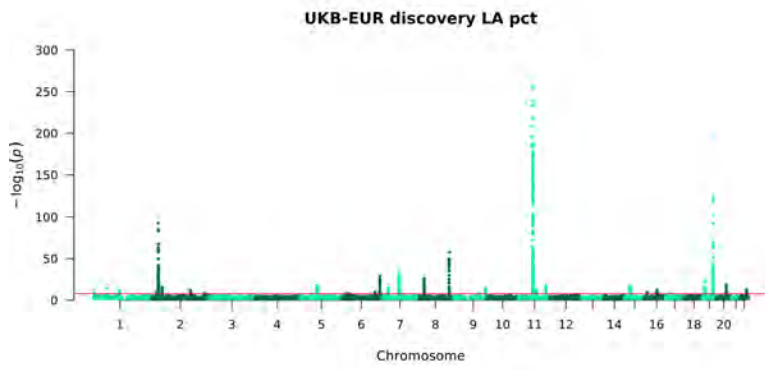




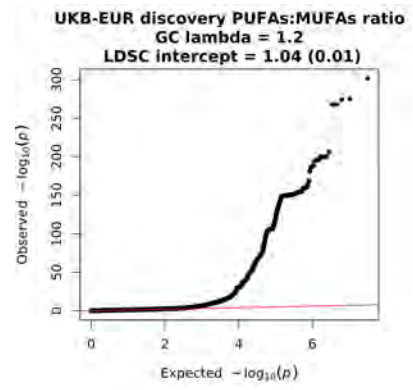
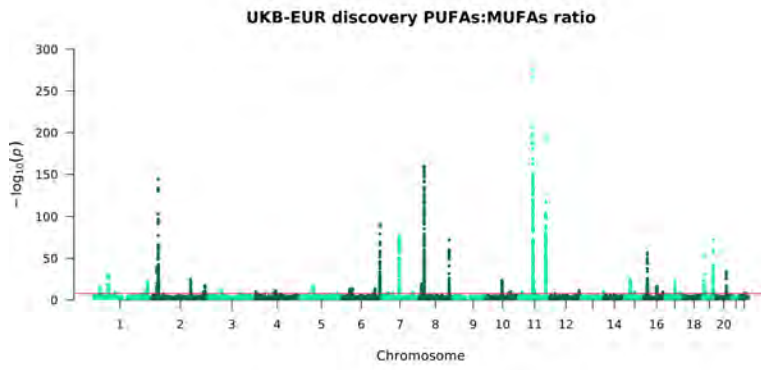
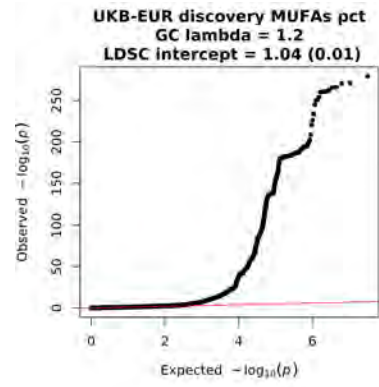
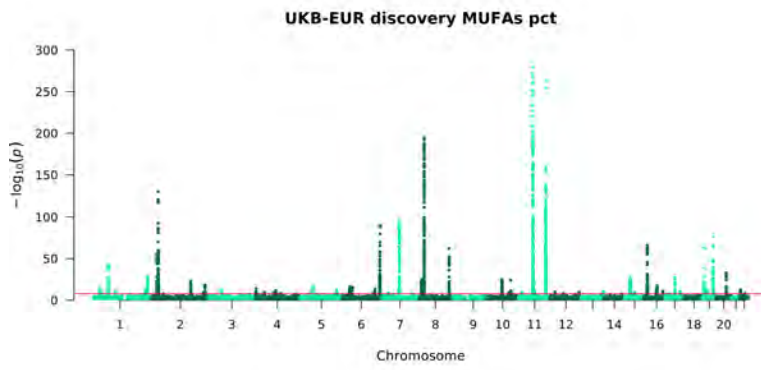
S3





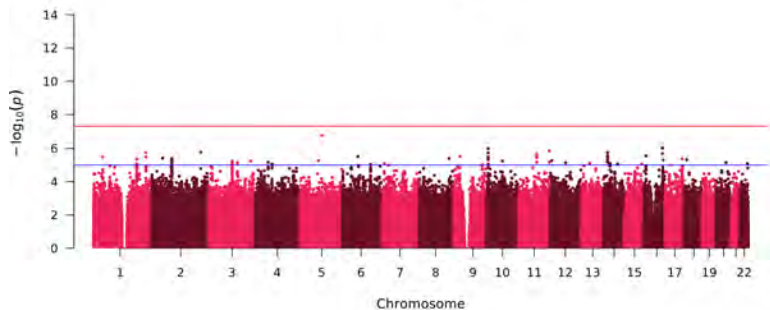




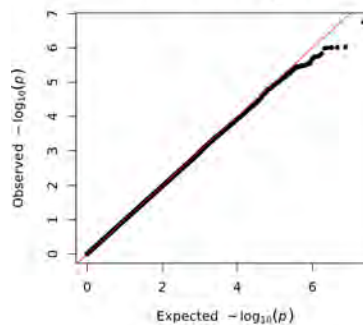


S4

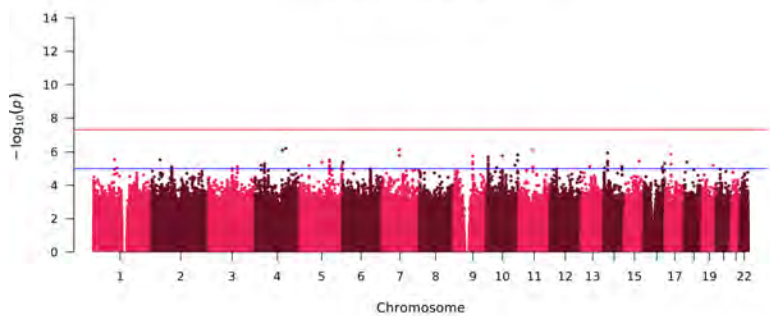
UKB-AFR Omega-3



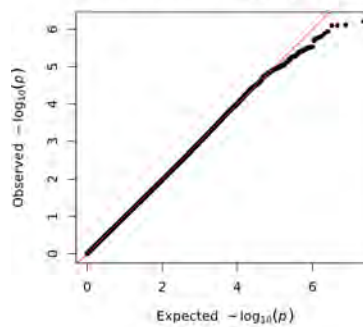
UKB-AFR Omega-3



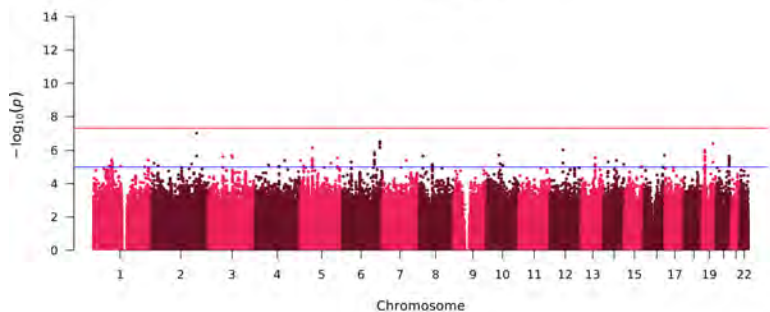
UKB-AFR Omega-3 pct



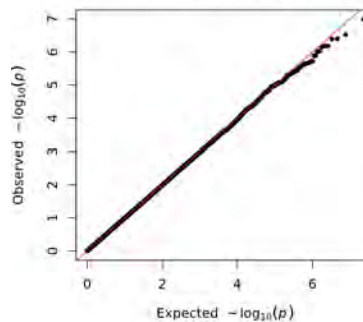
UKB-AFR Omega-3 pct



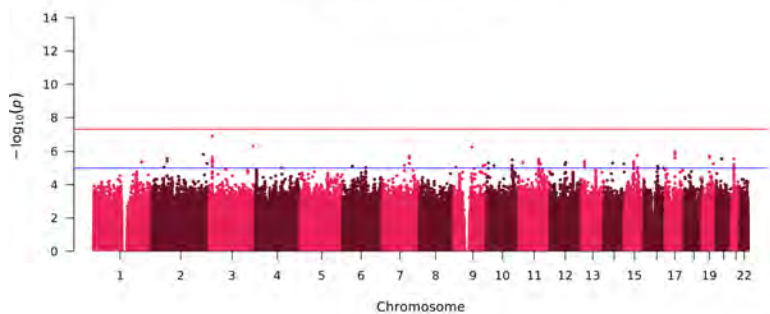
UKB-AFR Omega-6



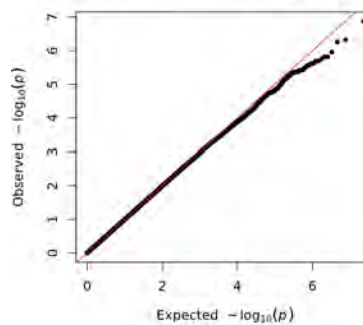
UKB-AFR Omega-6



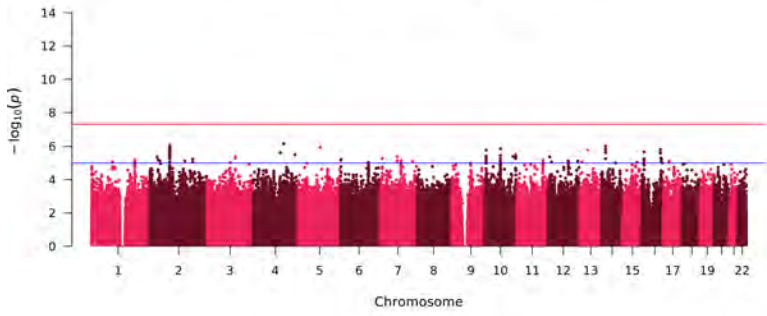
UKB-AFR Omega-6 pct



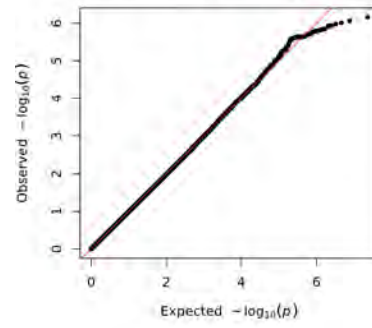
UKB-AFR Omega-6 pct



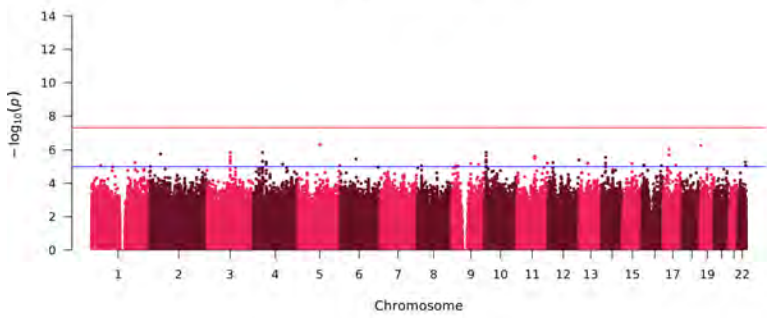
**UKB-AFR Omega-6:Omega-3 ratio**



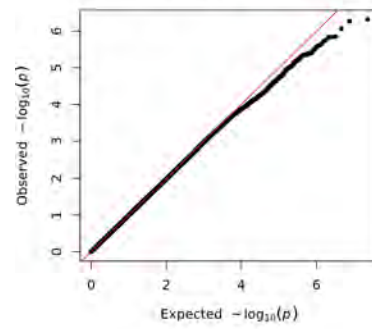
**UKB-AFR Omega-6:Omega-3 ratio**



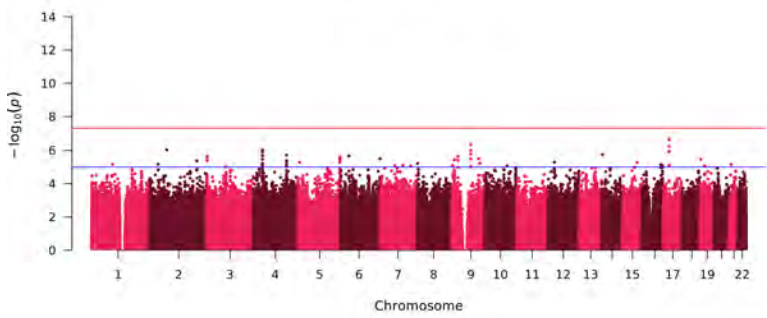
**UKB-AFR DHA**



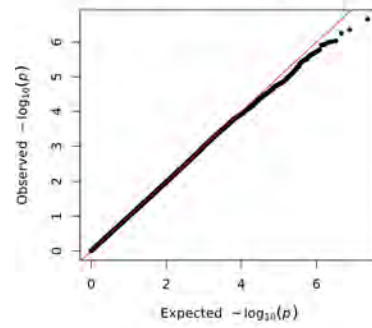
**UKB-AFR DHA**



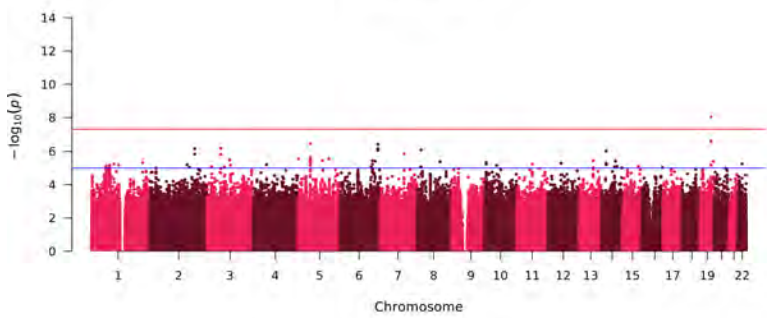
**UKB-AFR DHA pct**



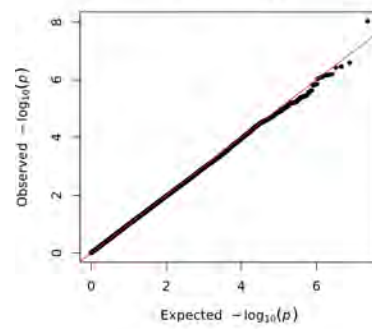
**UKB-AFR DHA pct**

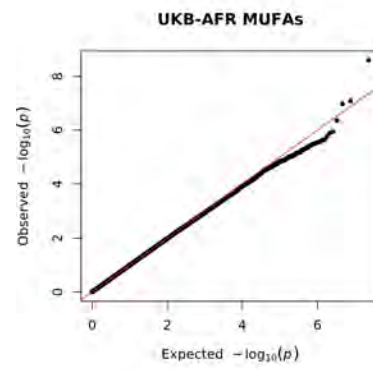
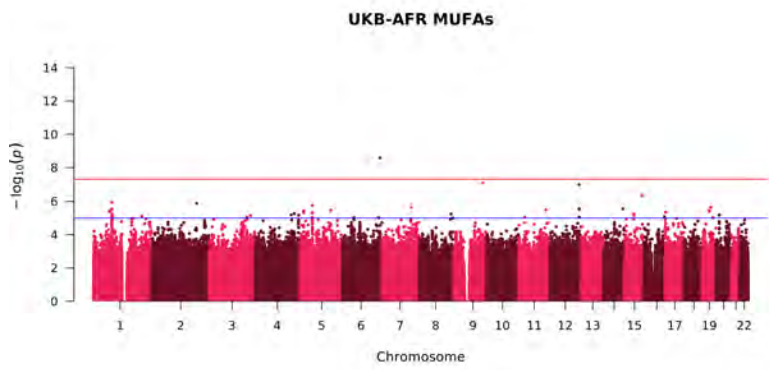
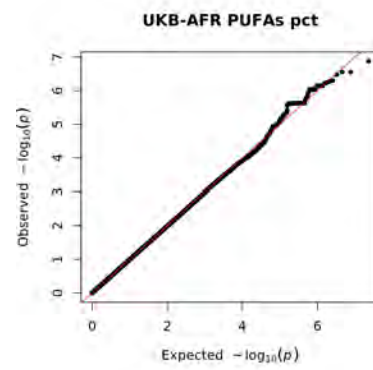
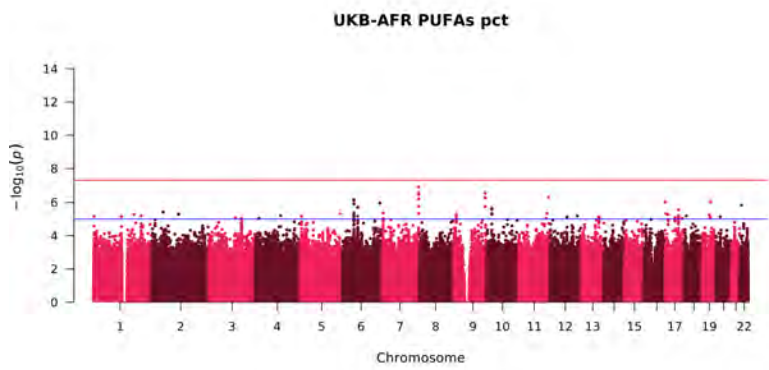
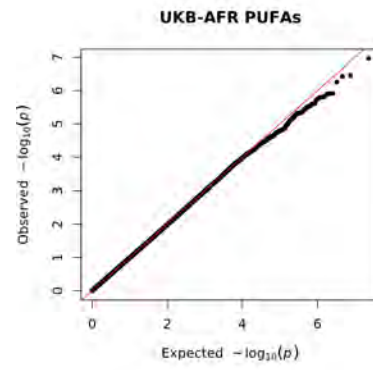
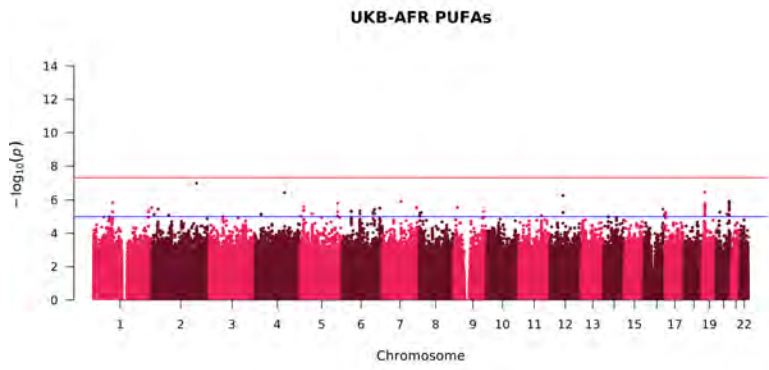
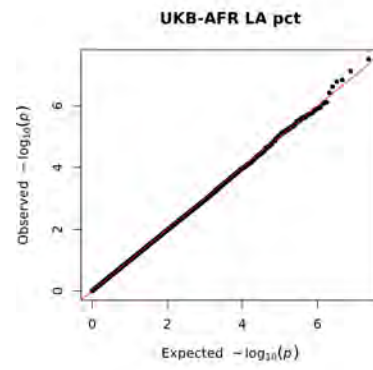
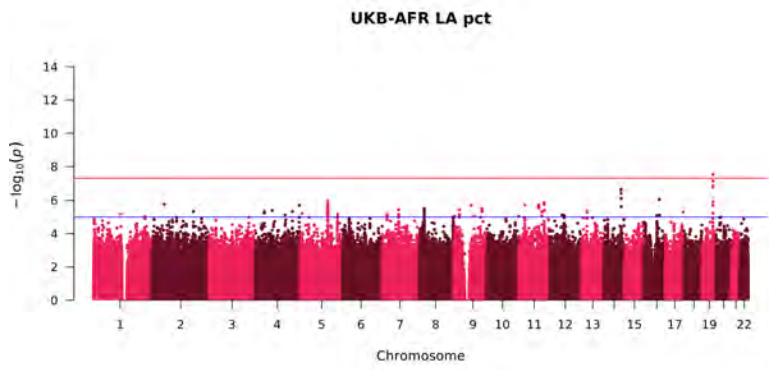


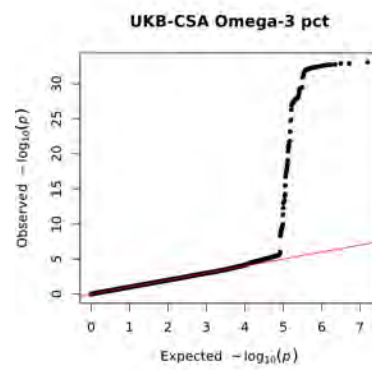
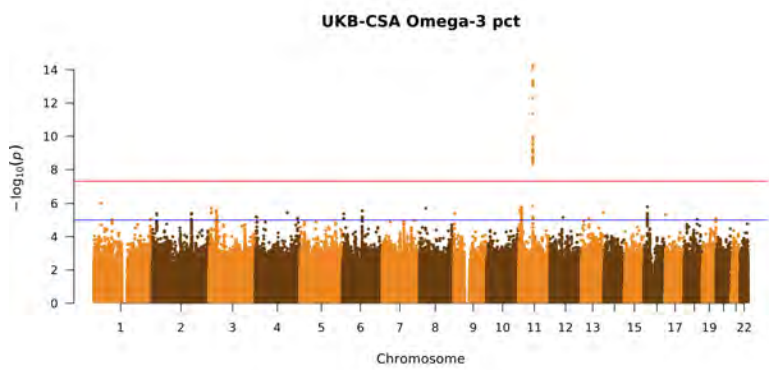
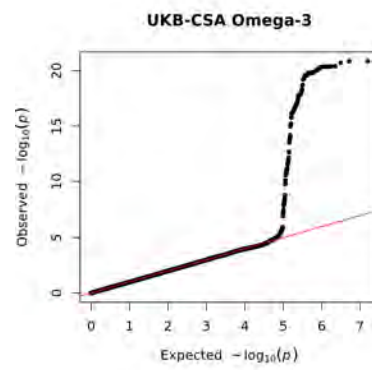
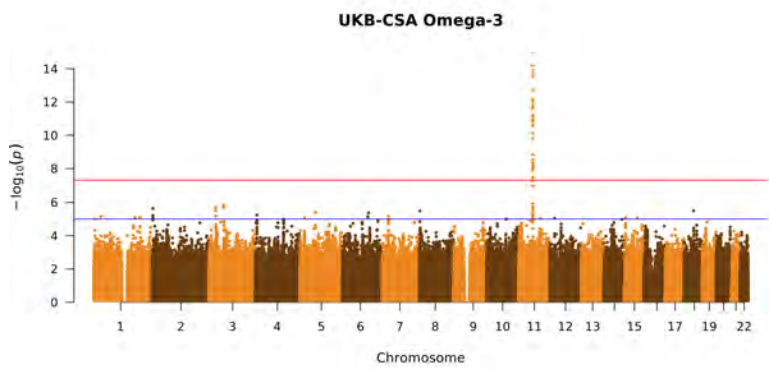
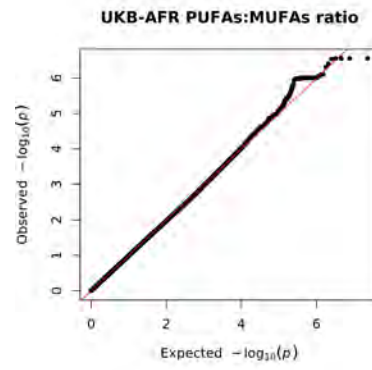
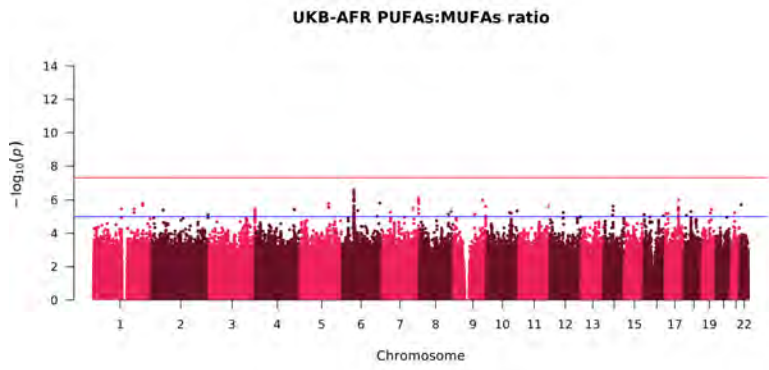
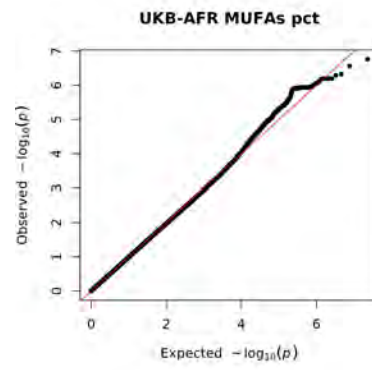
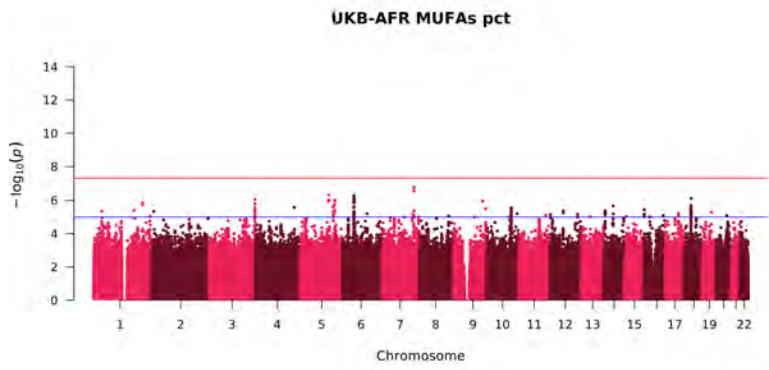
**UKB-AFR LA**



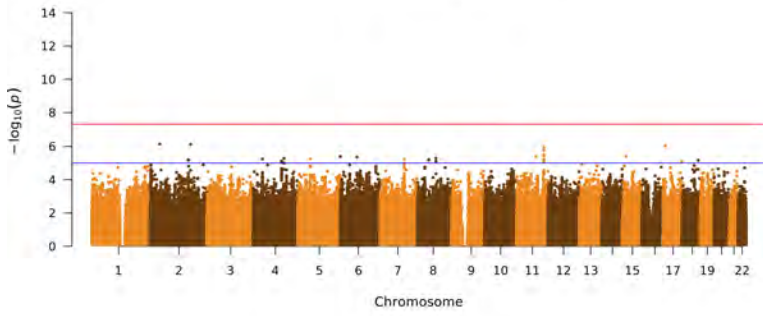
**UKB-AFR LA**



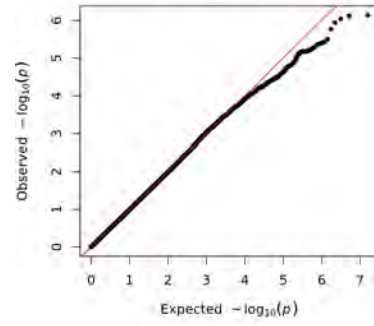




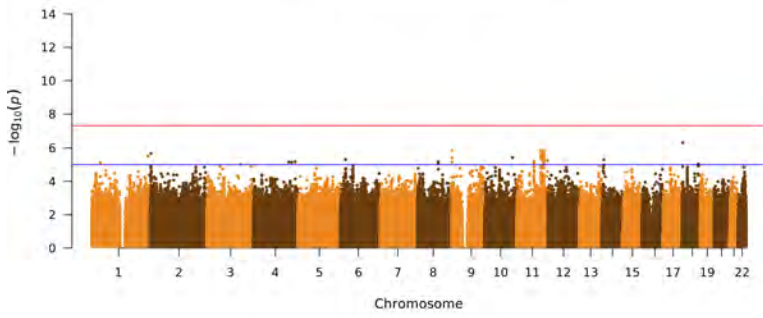
UKB-CSA Omega-6



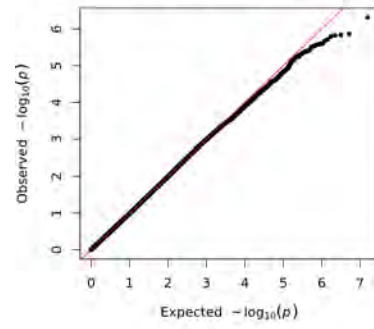
UKB-CSA Omega-6



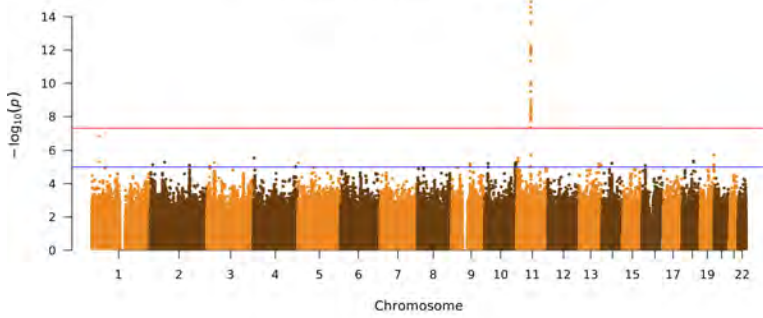
UKB-CSA Omega-6 pct



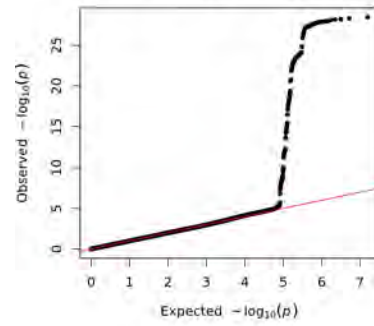
UKB-CSA Omega-6 pct



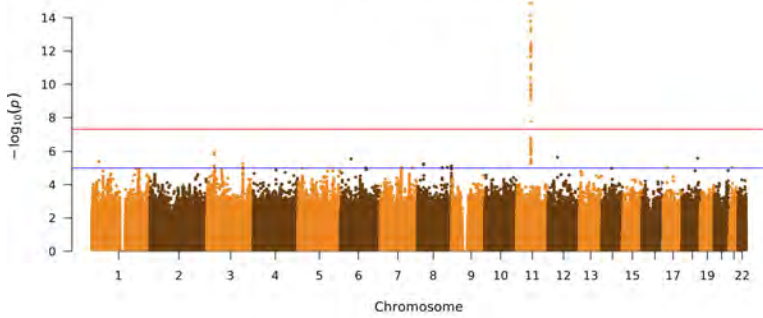
UKB-CSA Omega-6:Omega-3 ratio



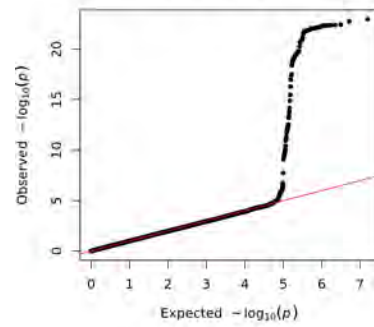
UKB-CSA Omega-6:Omega-3 ratio

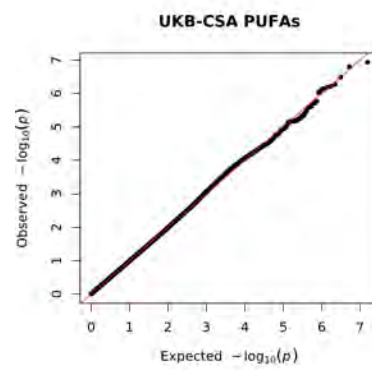
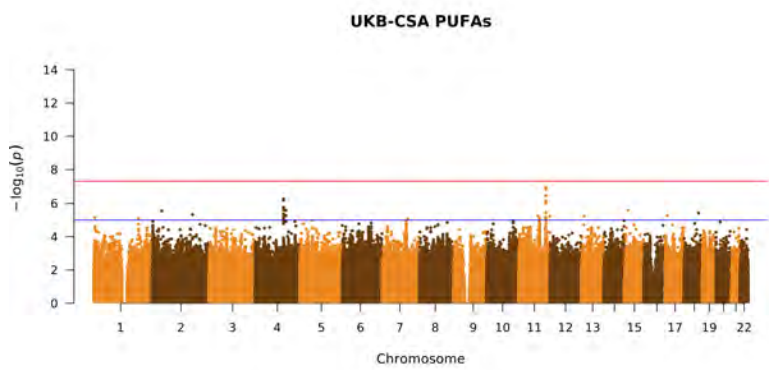
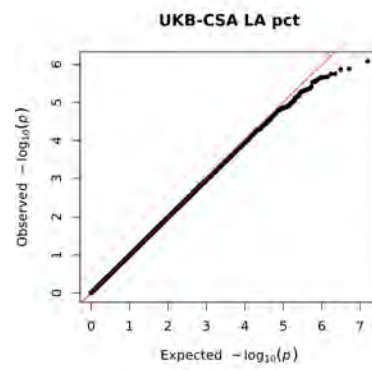
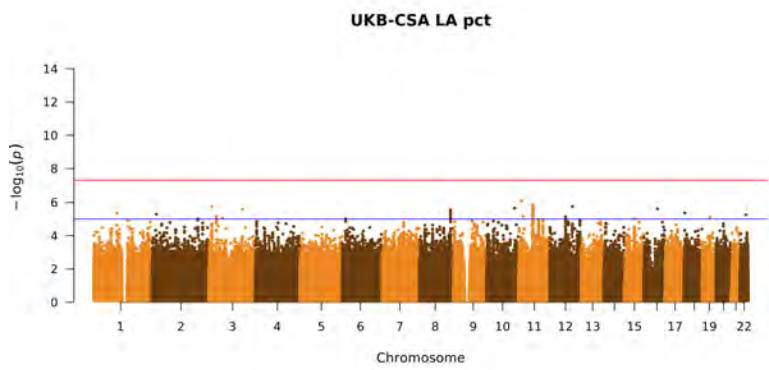
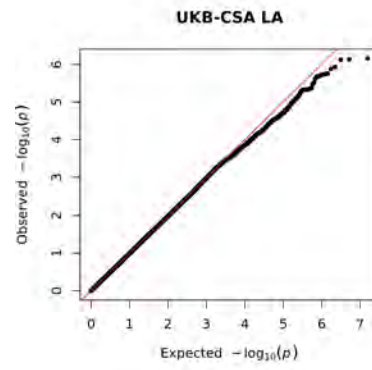
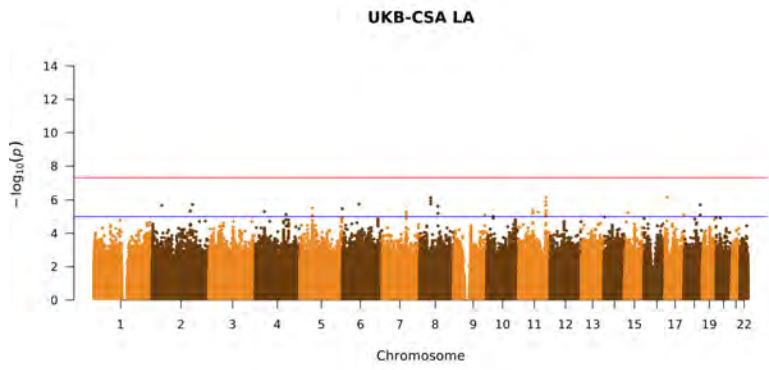
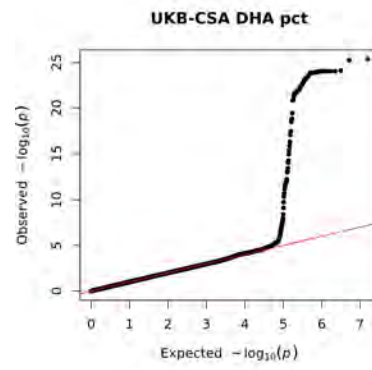
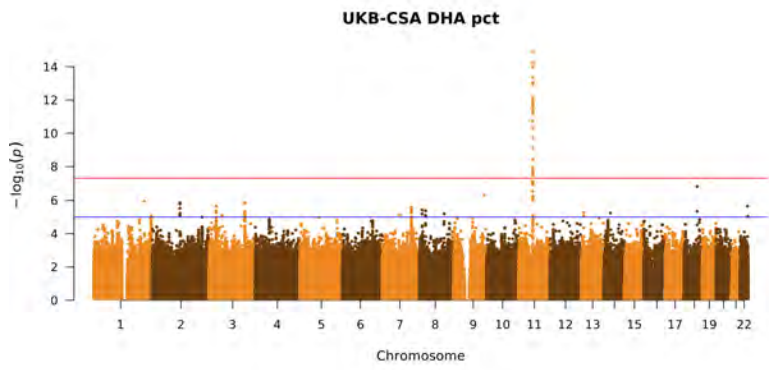


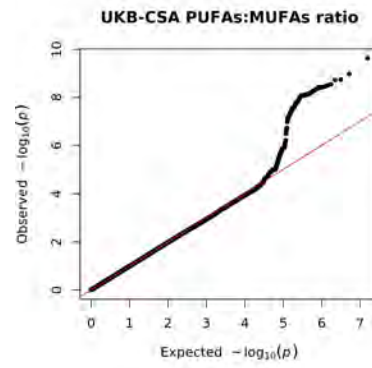
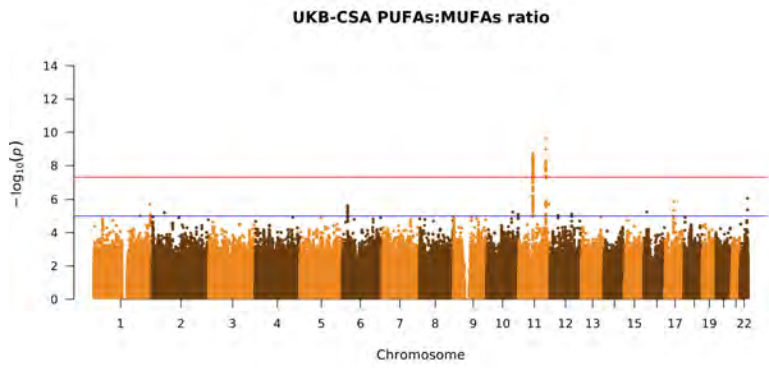
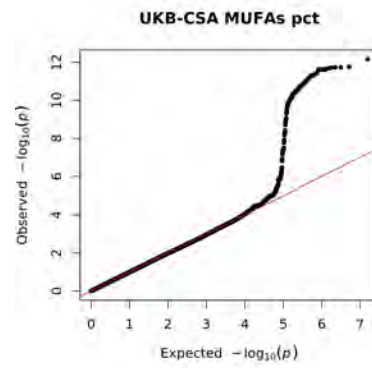
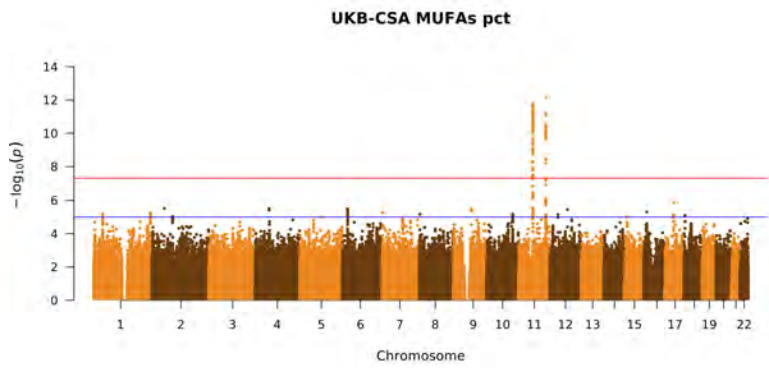
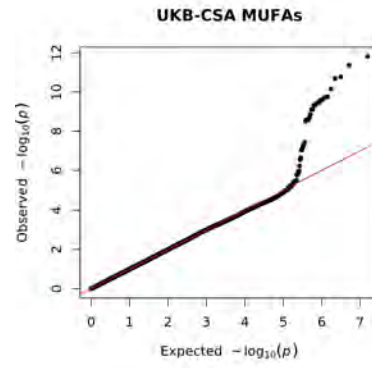
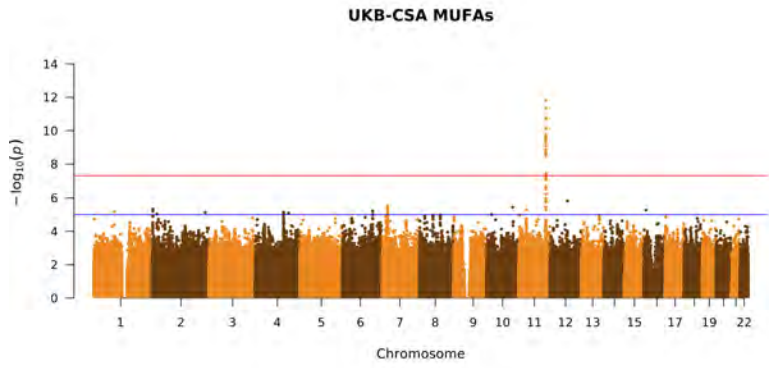
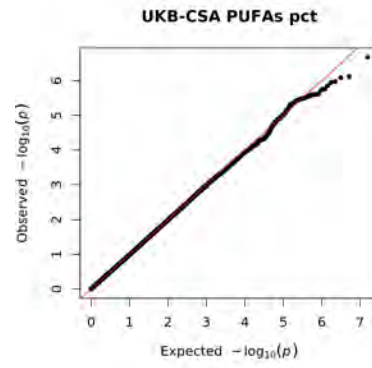
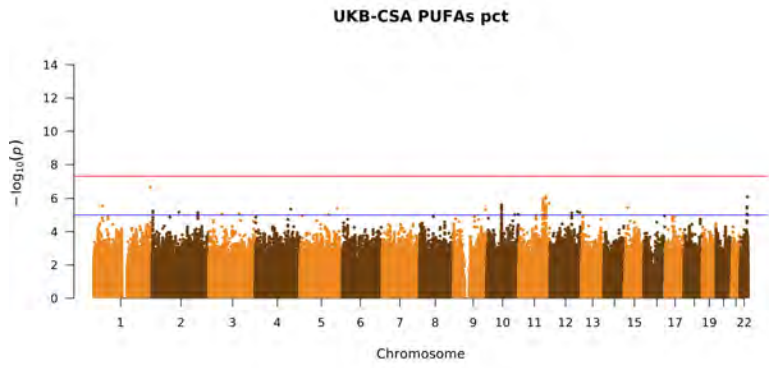
UKB-CSA DHA



UKB-CSA DHA

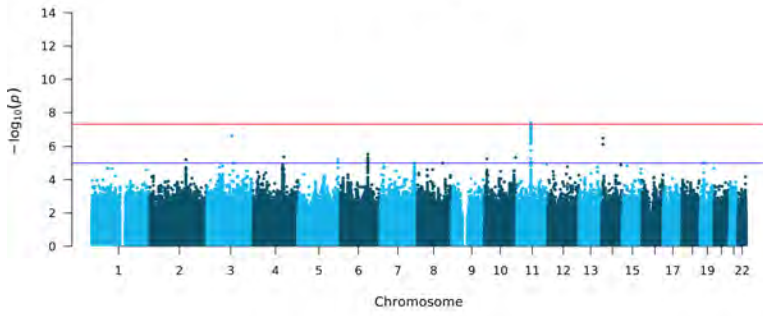




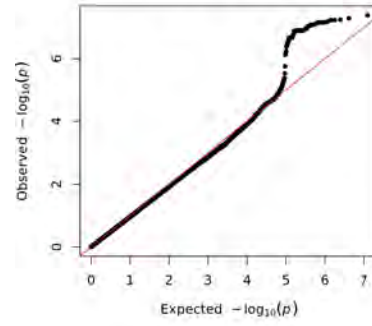




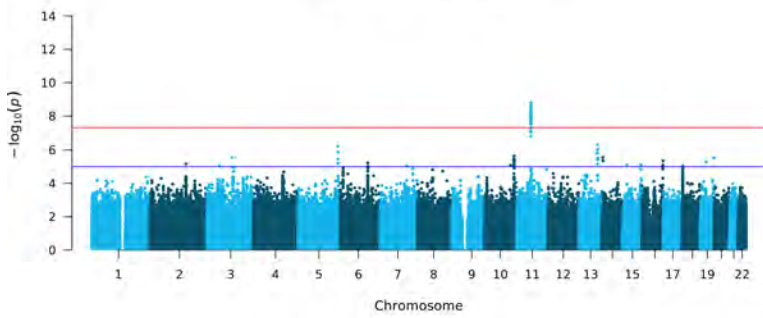
**UKB-EAS Omega-3**



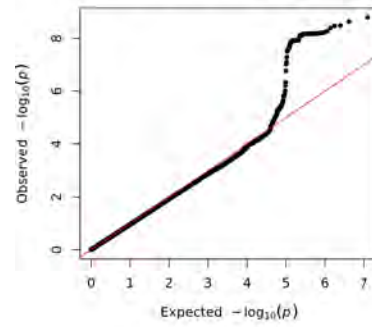
**UKB-EAS Omega-3**



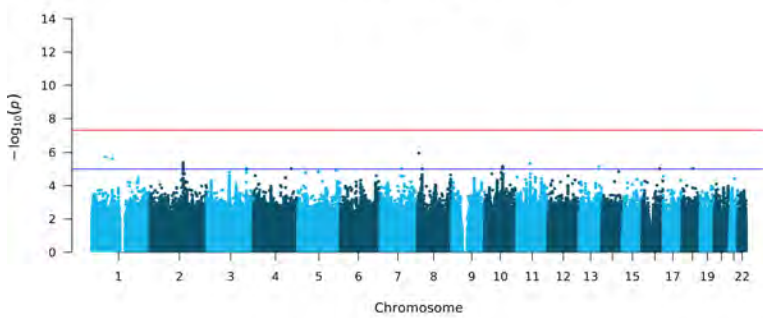
**UKB-EAS Omega-3 pct**



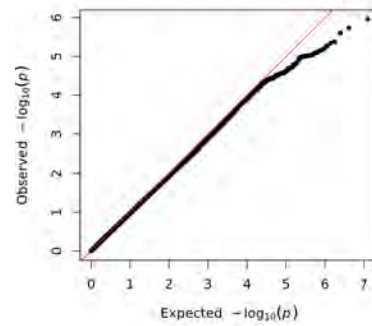
**UKB-EAS Omega-3 pct**



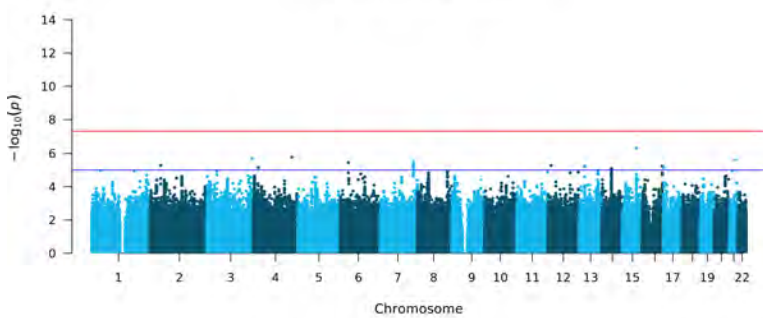
**UKB-EAS Omega-6**



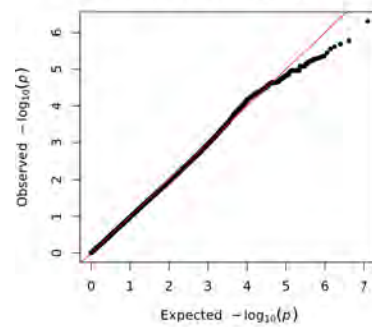
**UKB-EAS Omega-6**



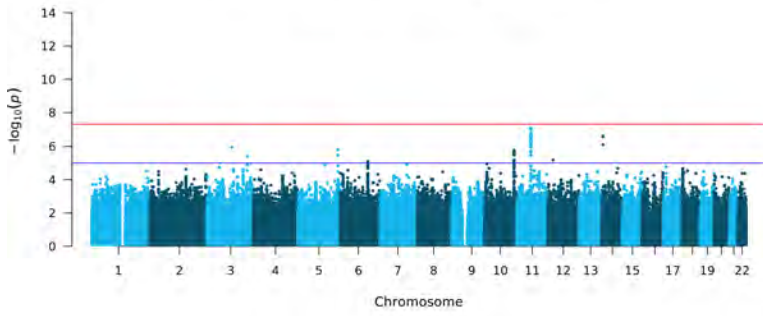
**UKB-EAS Omega-6 pct**



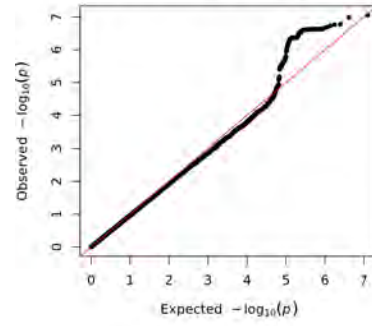
**UKB-EAS Omega-6 pct**



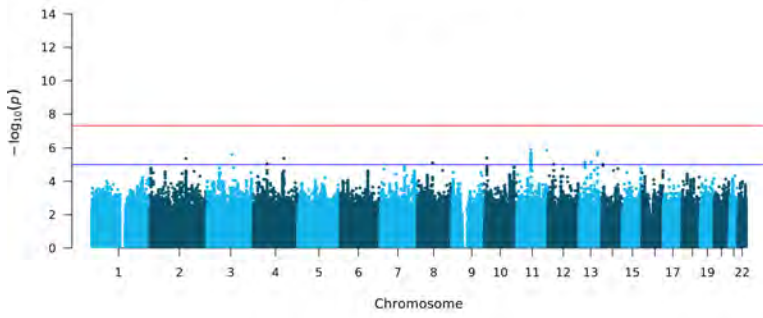
**UKB-EAS Omega-6:Omega-3 ratio**



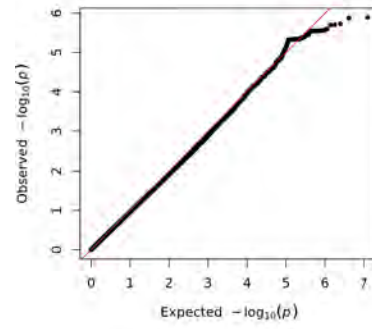
**UKB-EAS Omega-6:Omega-3 ratio**



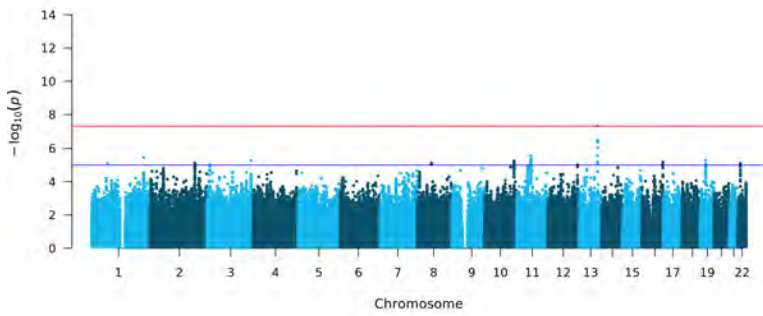
**UKB-EAS DHA**



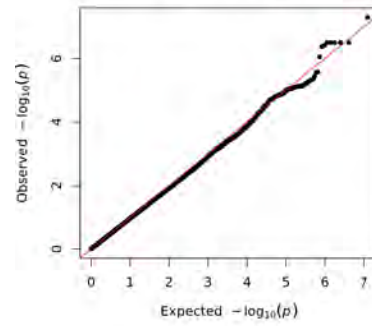
**UKB-EAS DHA**



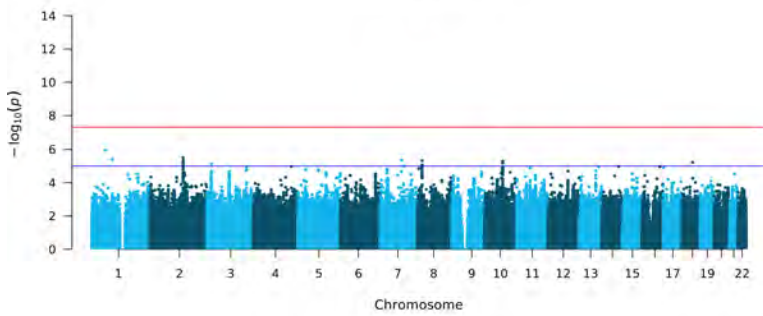
**UKB-EAS DHA pct**



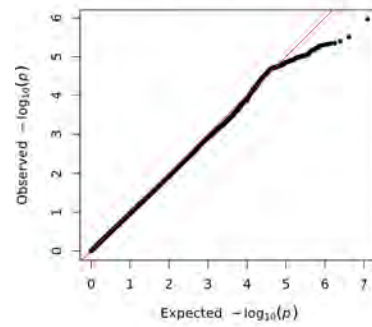
**UKB-EAS DHA pct**

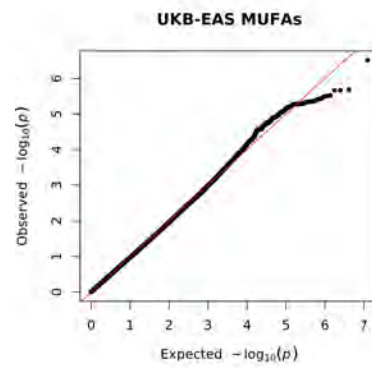
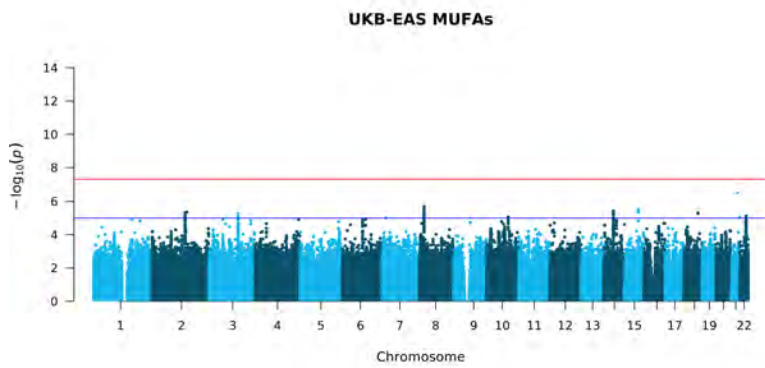
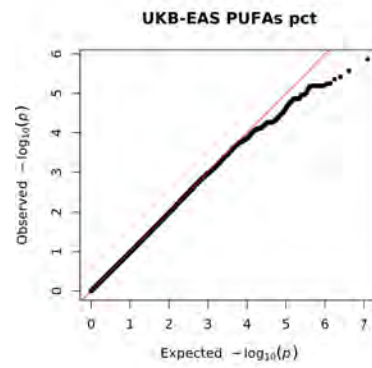
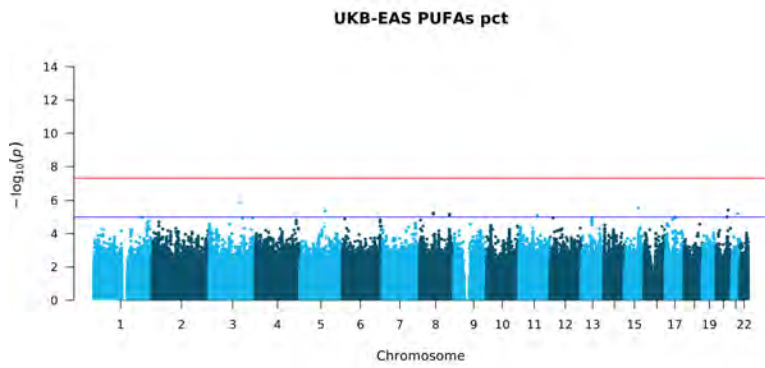
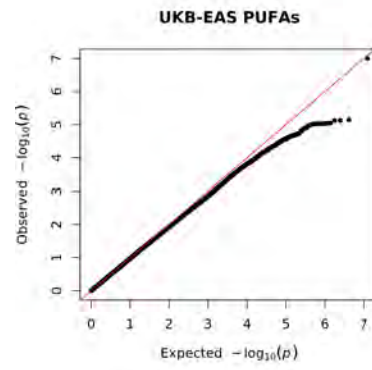
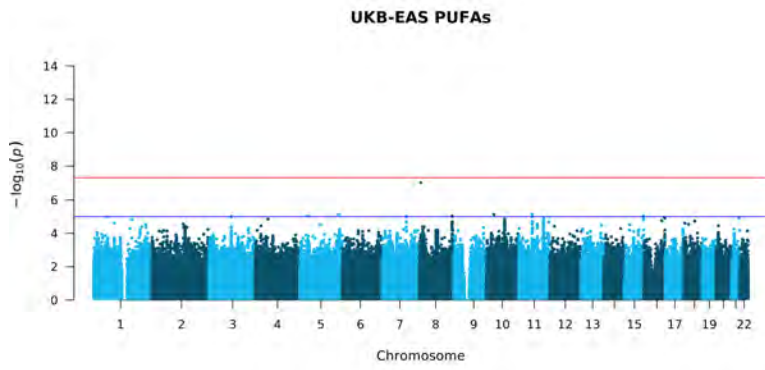
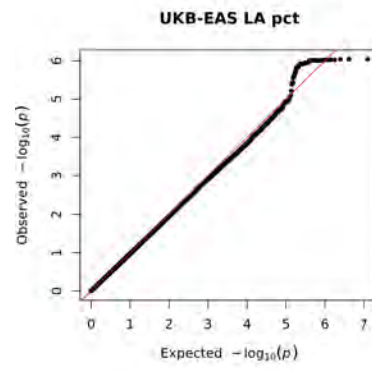
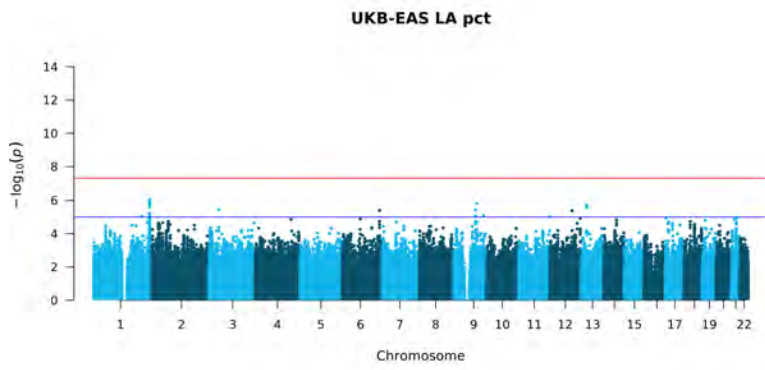


**UKB-EAS LA**

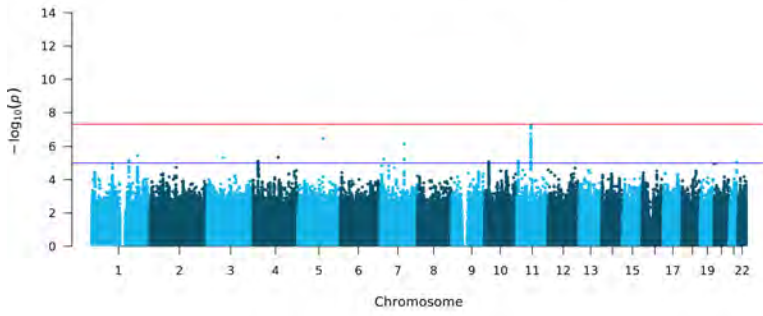


**UKB-EAS LA**

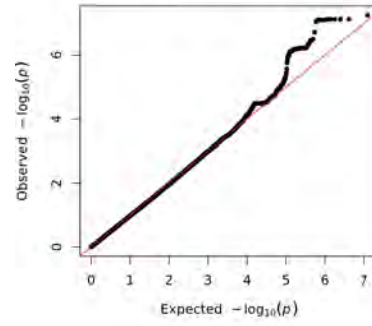




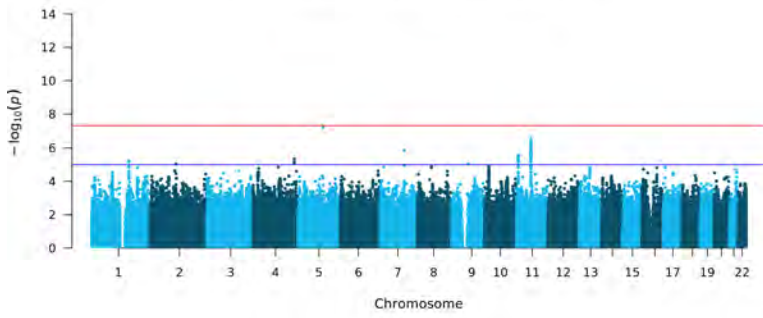
UKB-EAS MUFAs pct



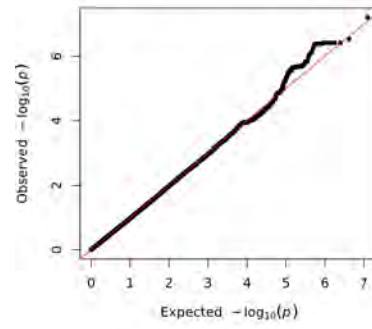
UKB-EAS MUFAs pct



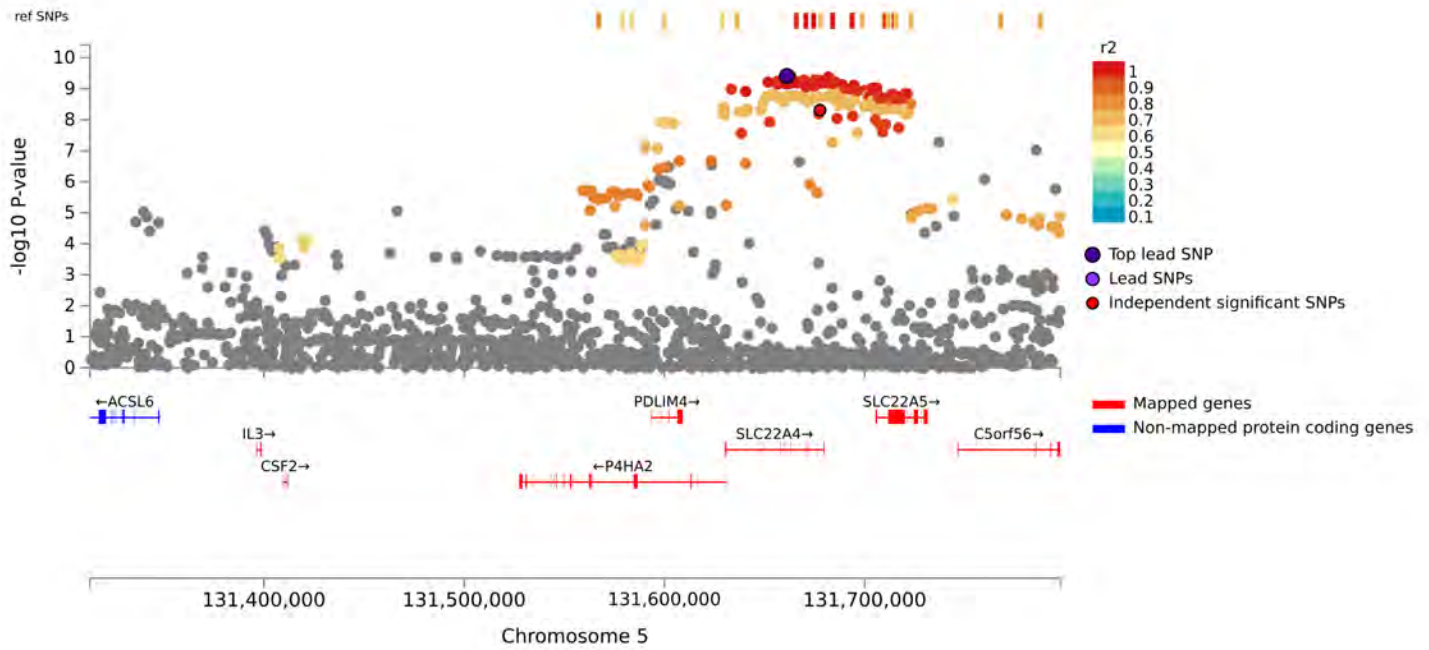
UKB-EAS PUFAs:MUFAs ratio



UKB-EAS PUFAs:MUFAs ratio

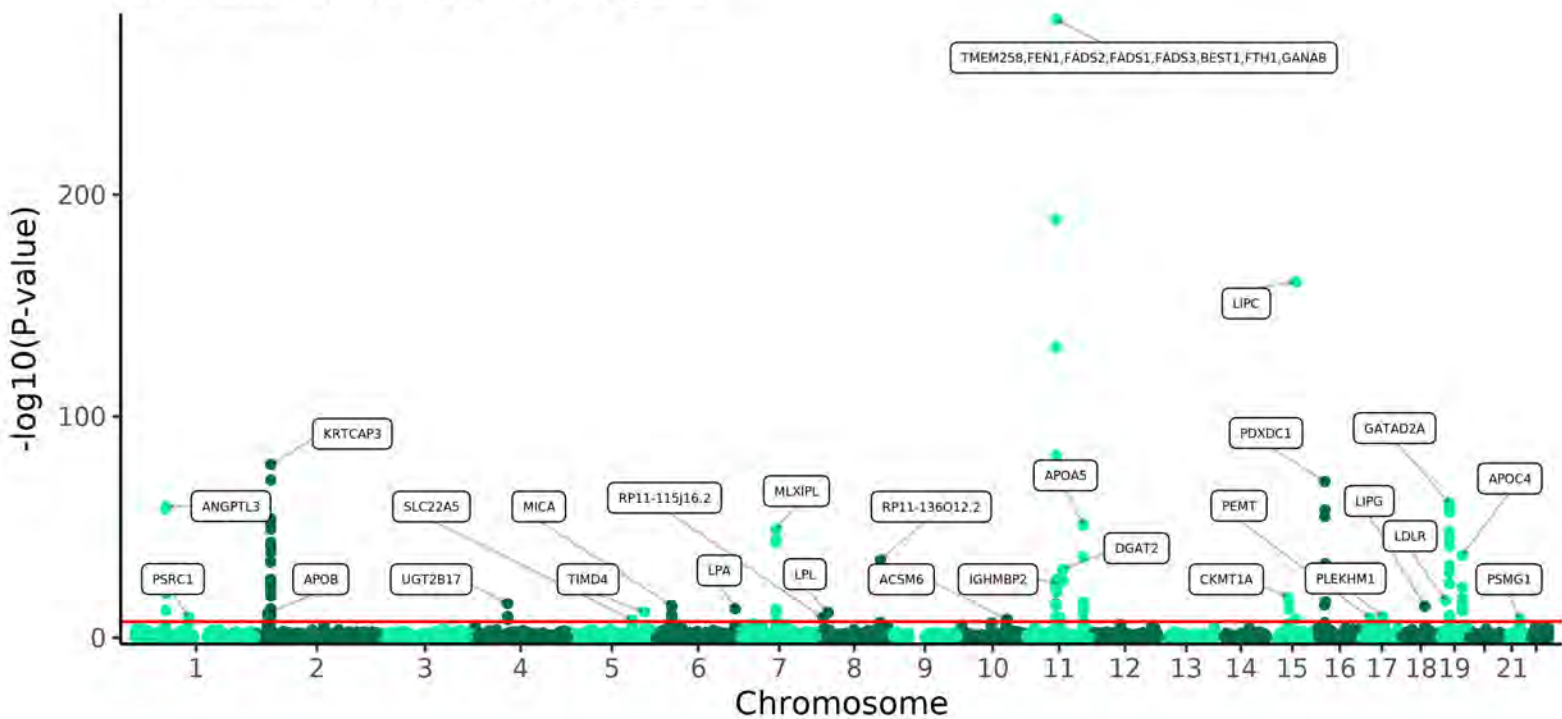


S5

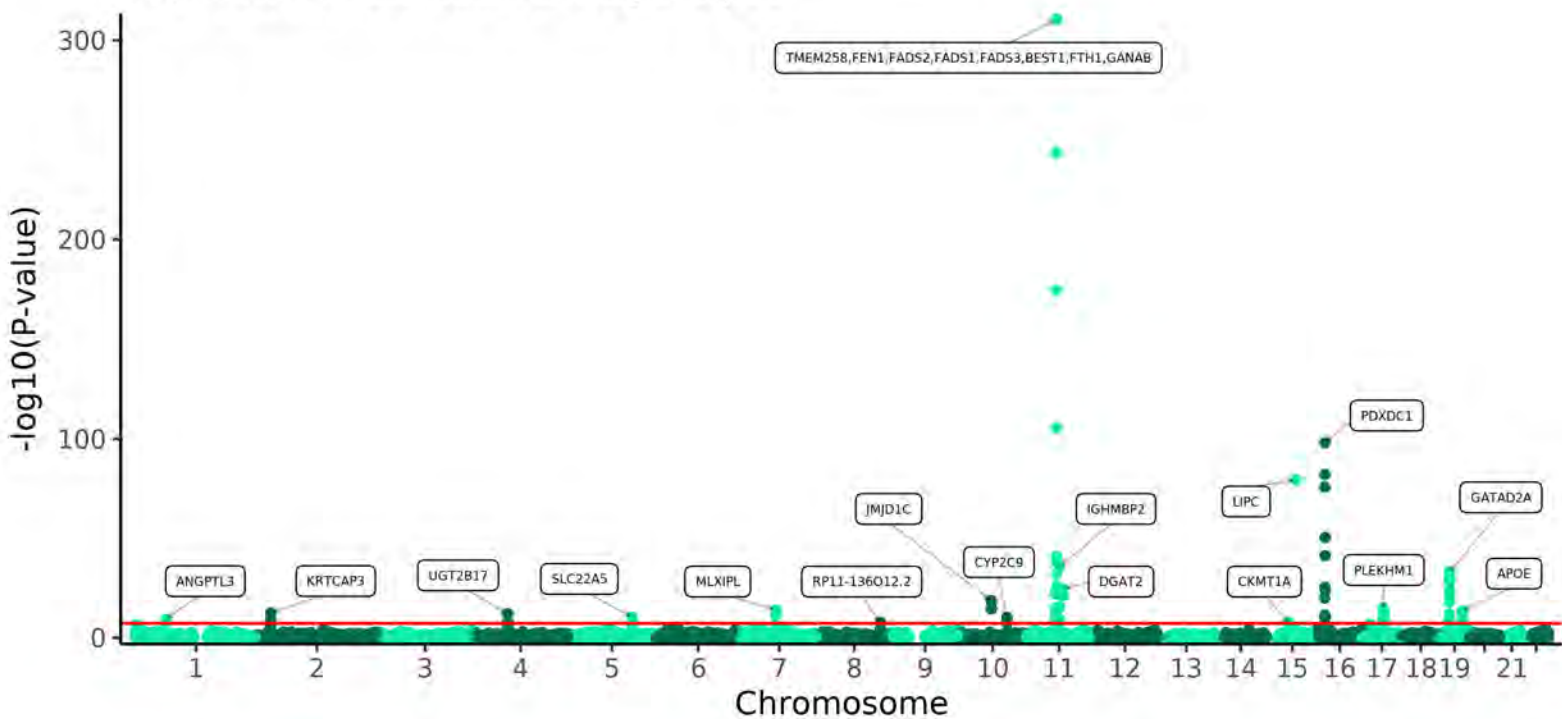


S6

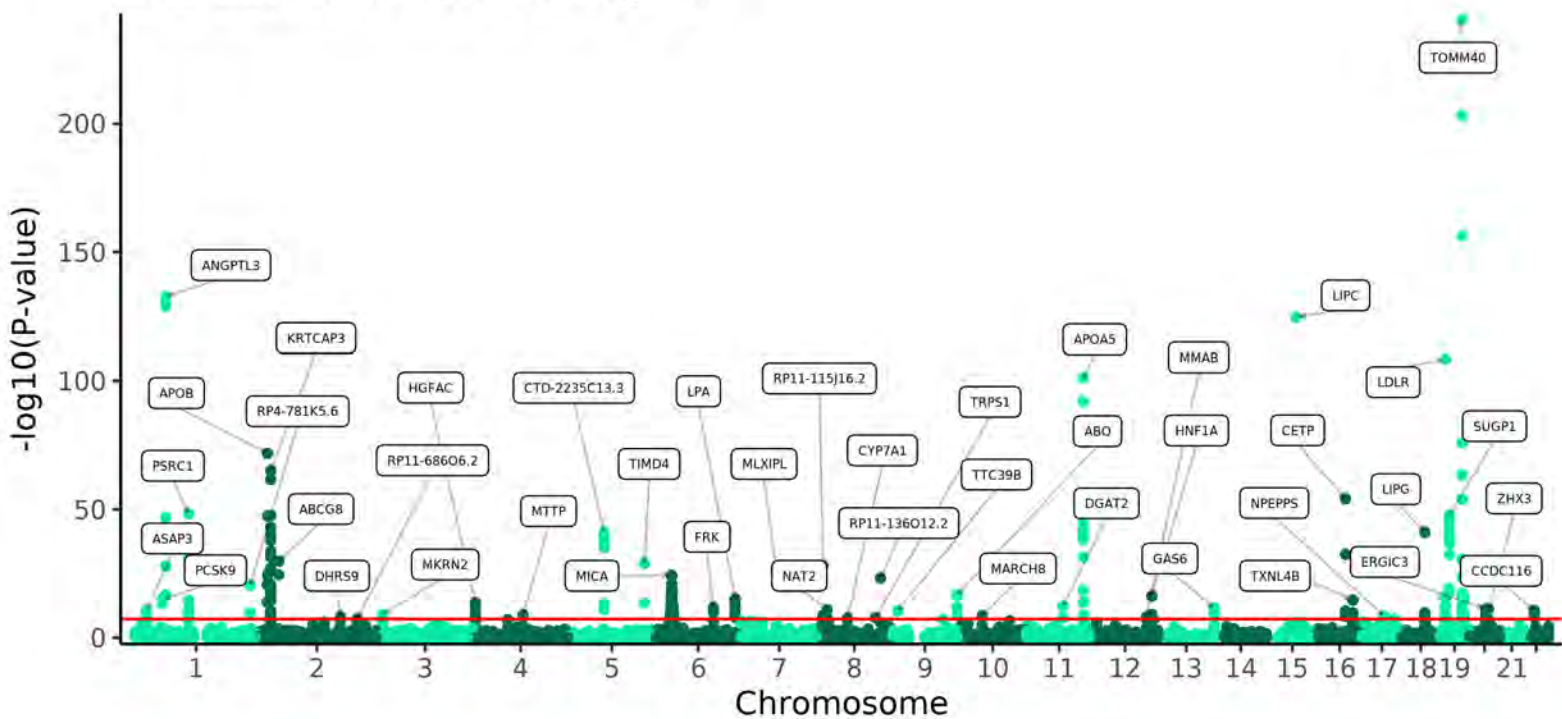
UKB-EUR SMultiXcan Omega-3



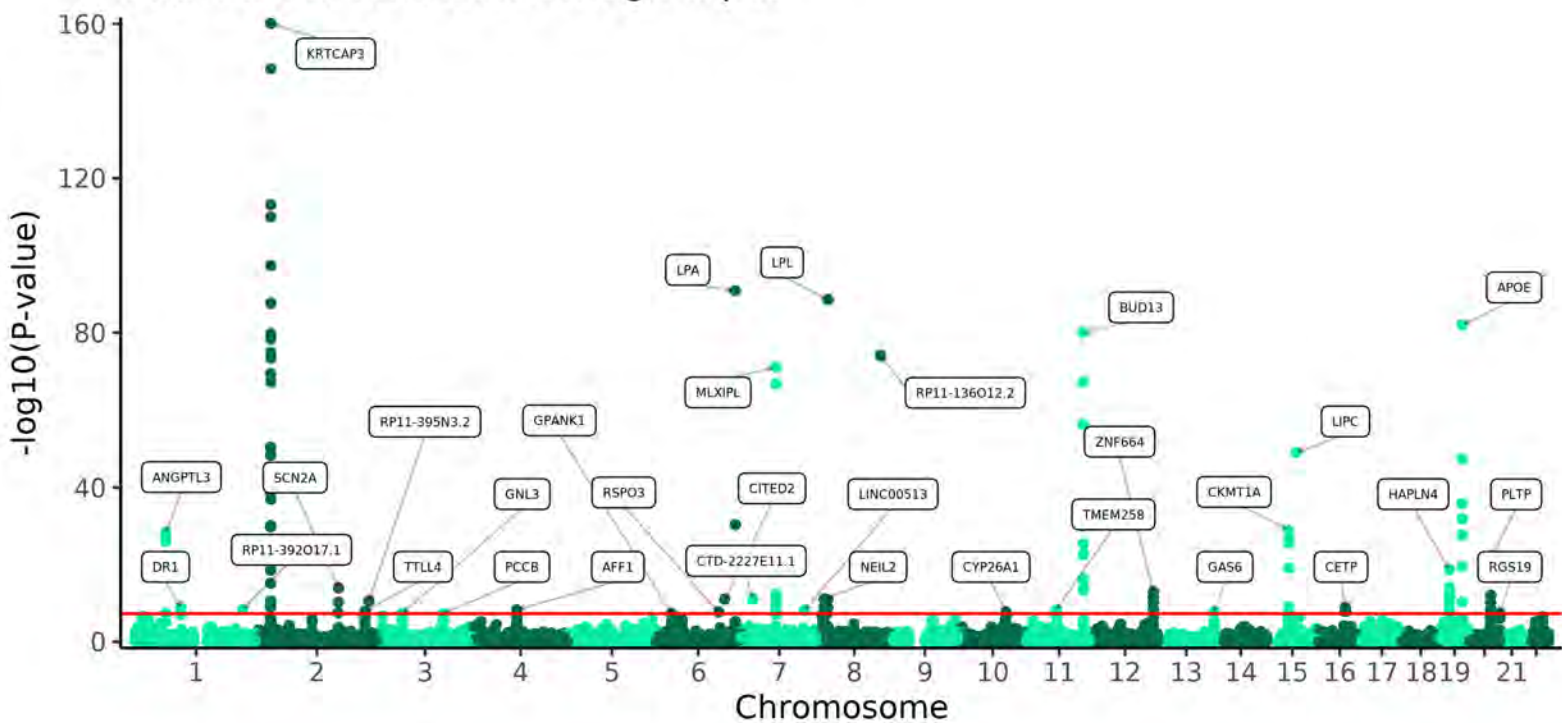
UKB-EUR SMultiXcan Omega-3 pct



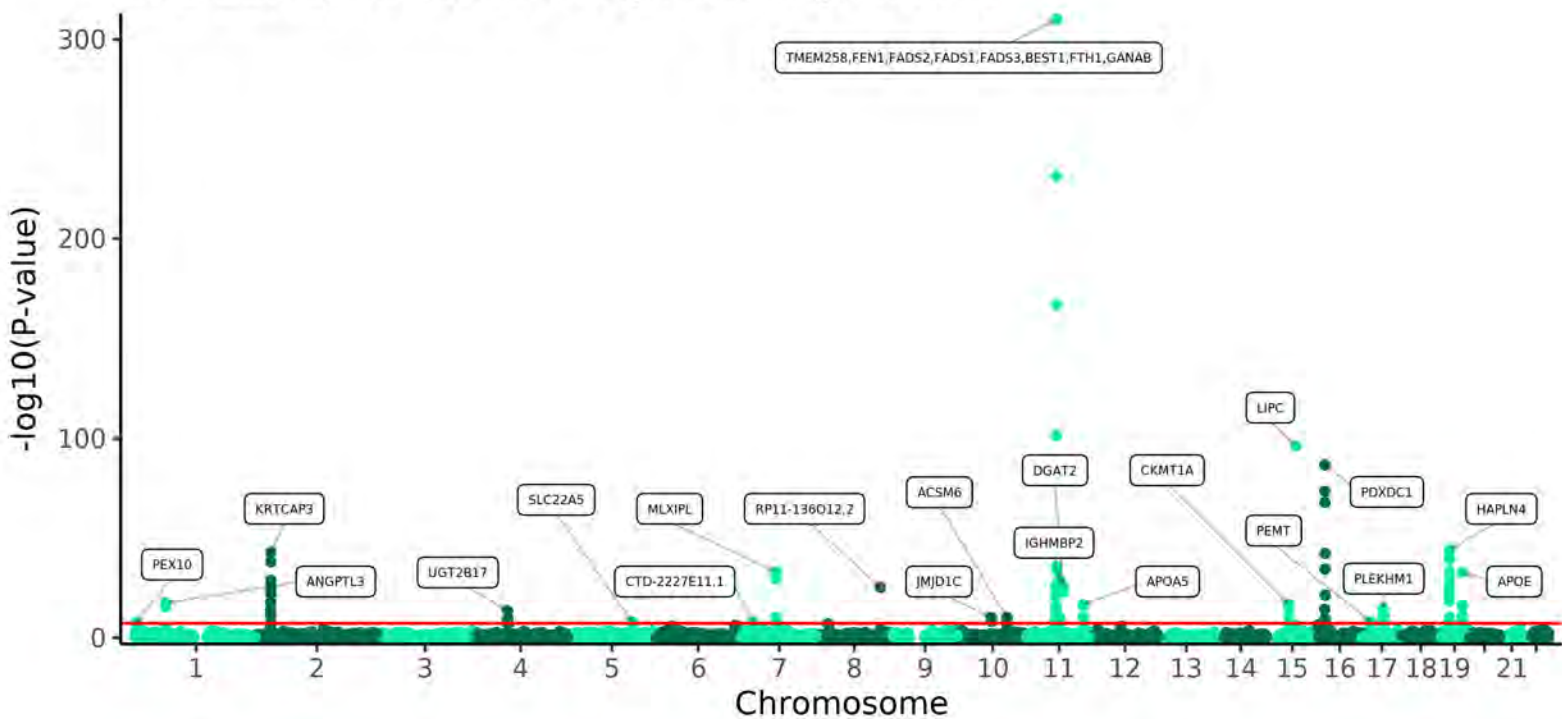
### UKB-EUR SMultiXcan Omega-6



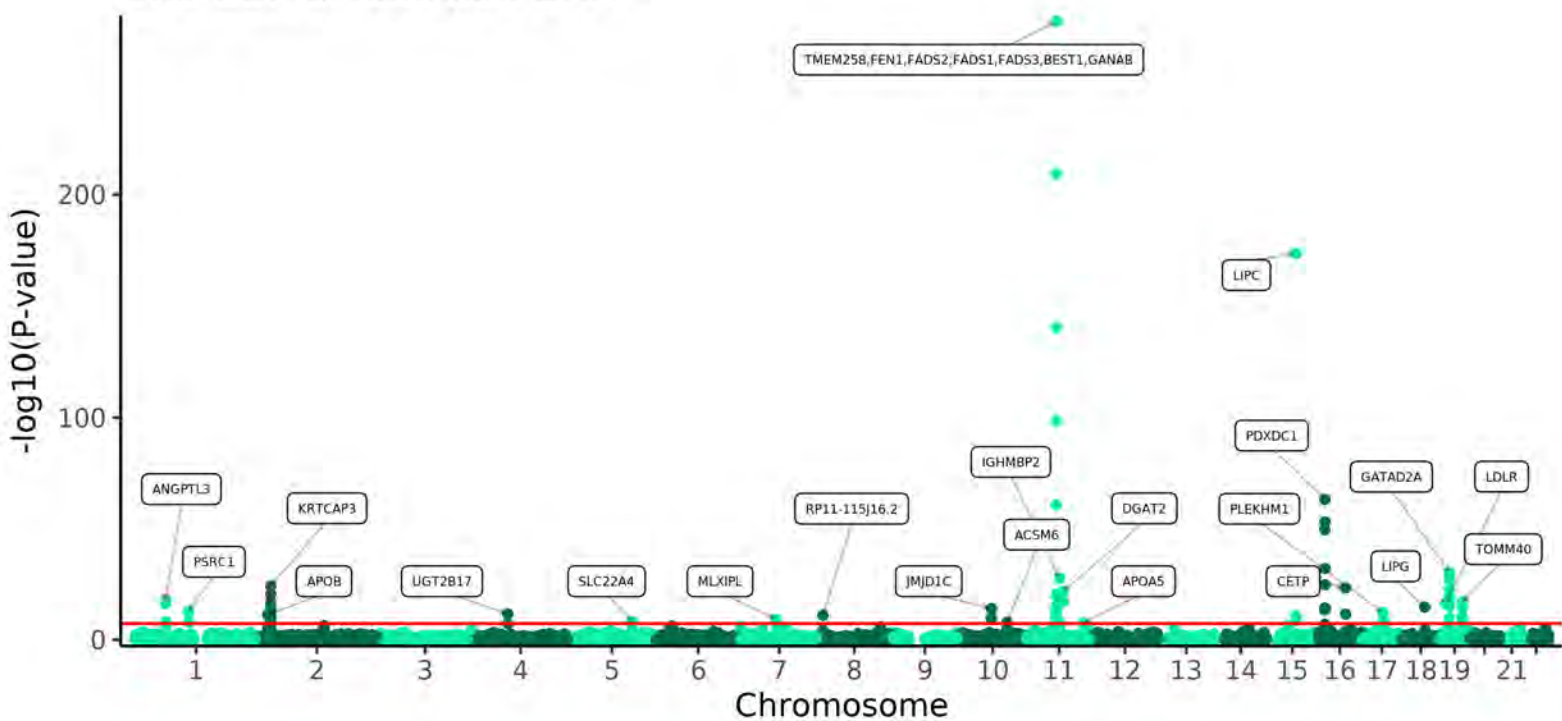
### UKB-EUR SMultiXcan Omega-6 pct



### UKB-EUR SMultiXcan Omega-6:Omega-3 ratio

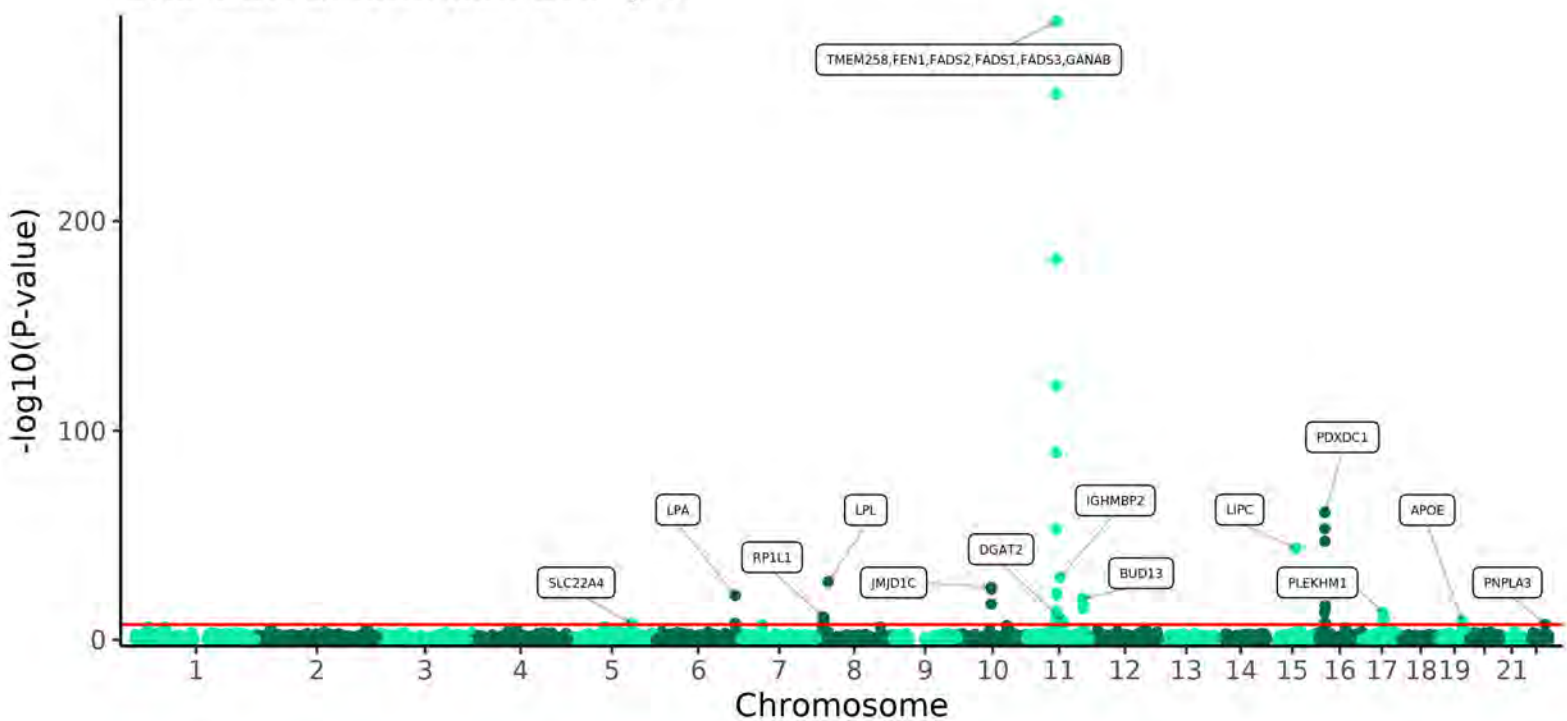


### UKB-EUR SMultiXcan DHA

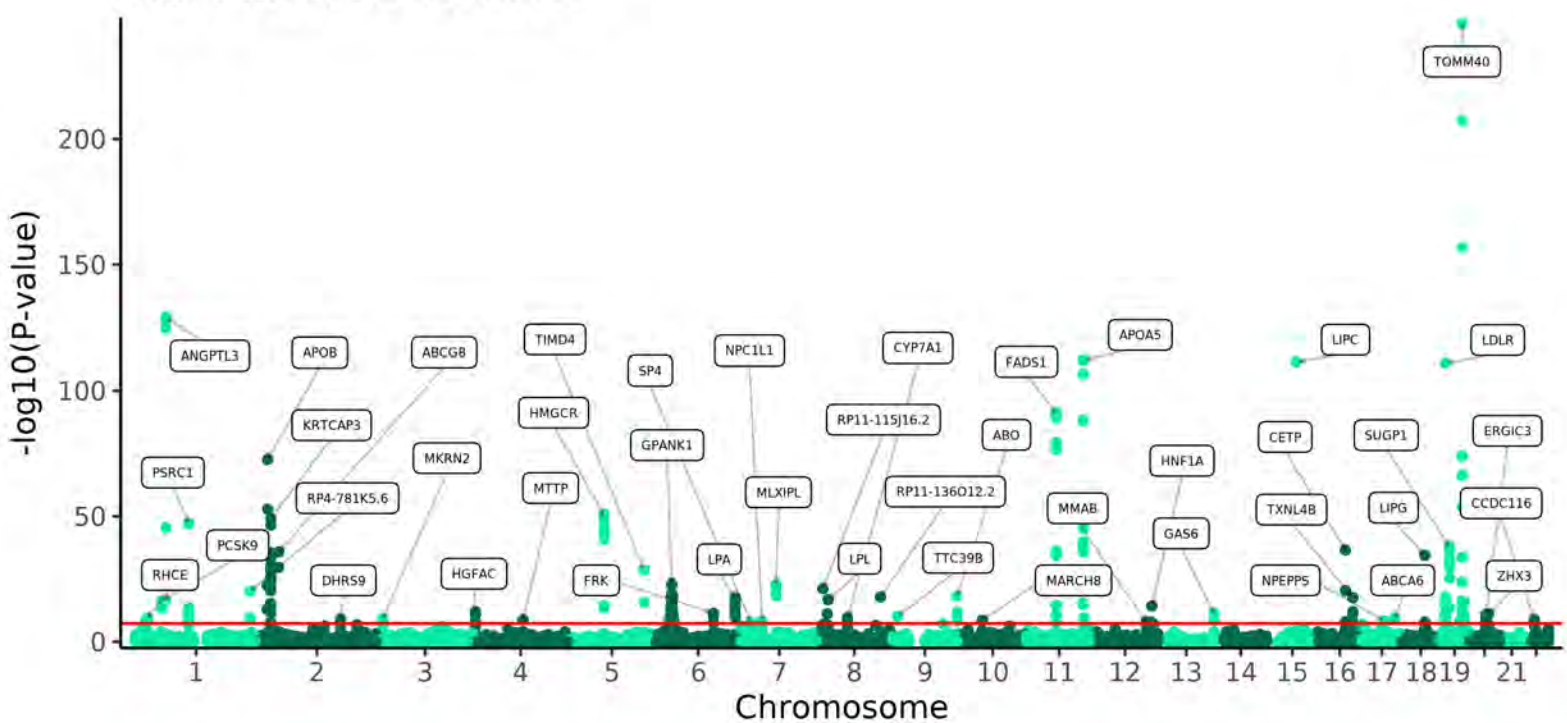




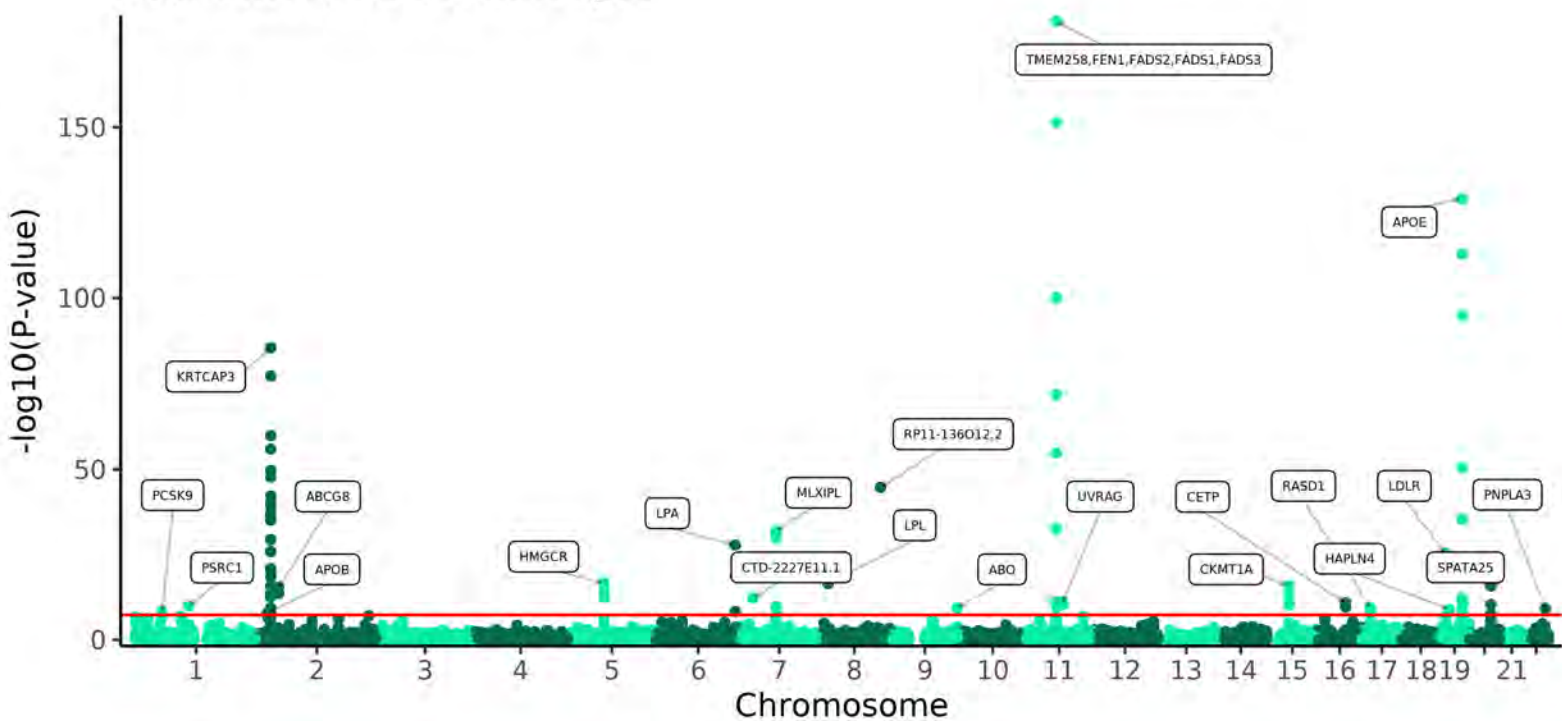
### UKB-EUR SMultiXcan DHA pct



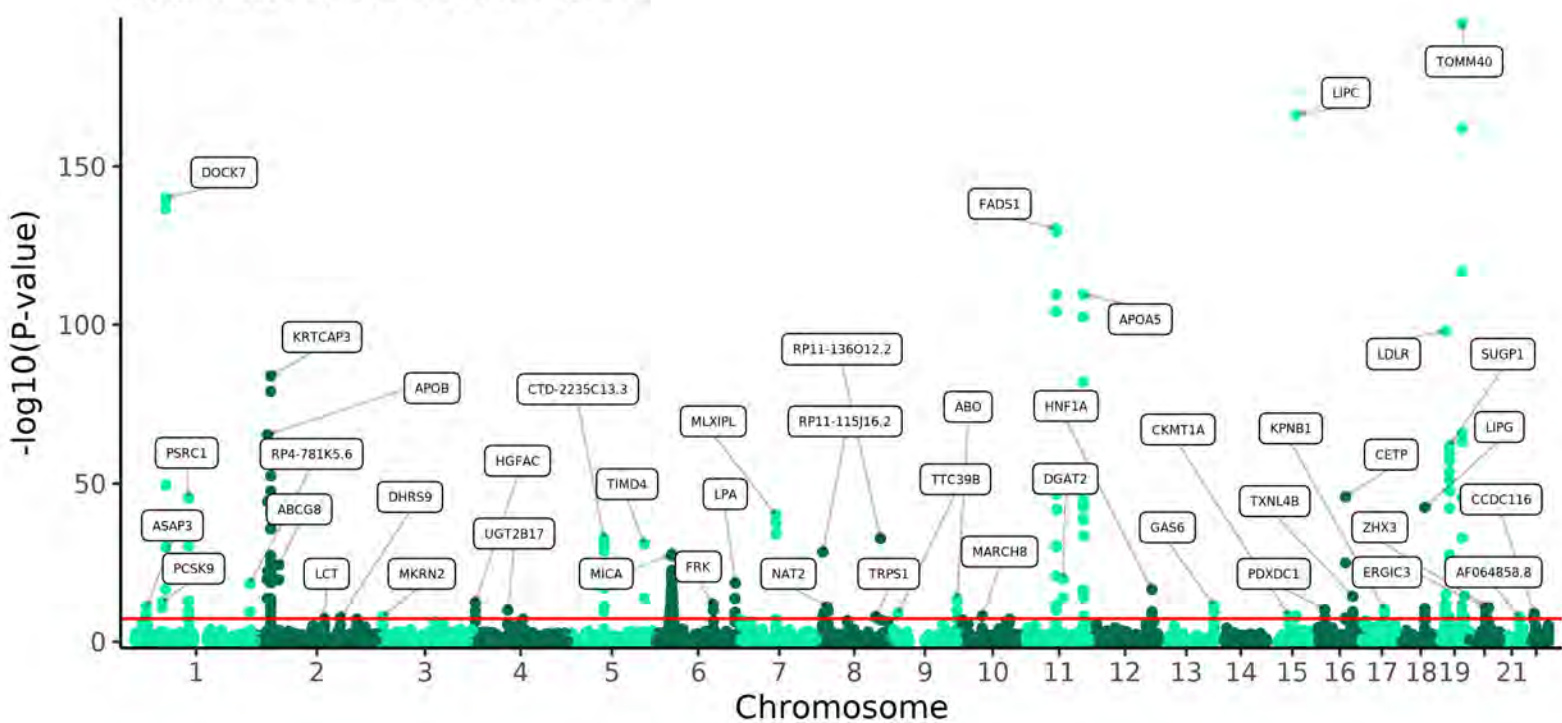
### UKB-EUR SMultiXcan LA



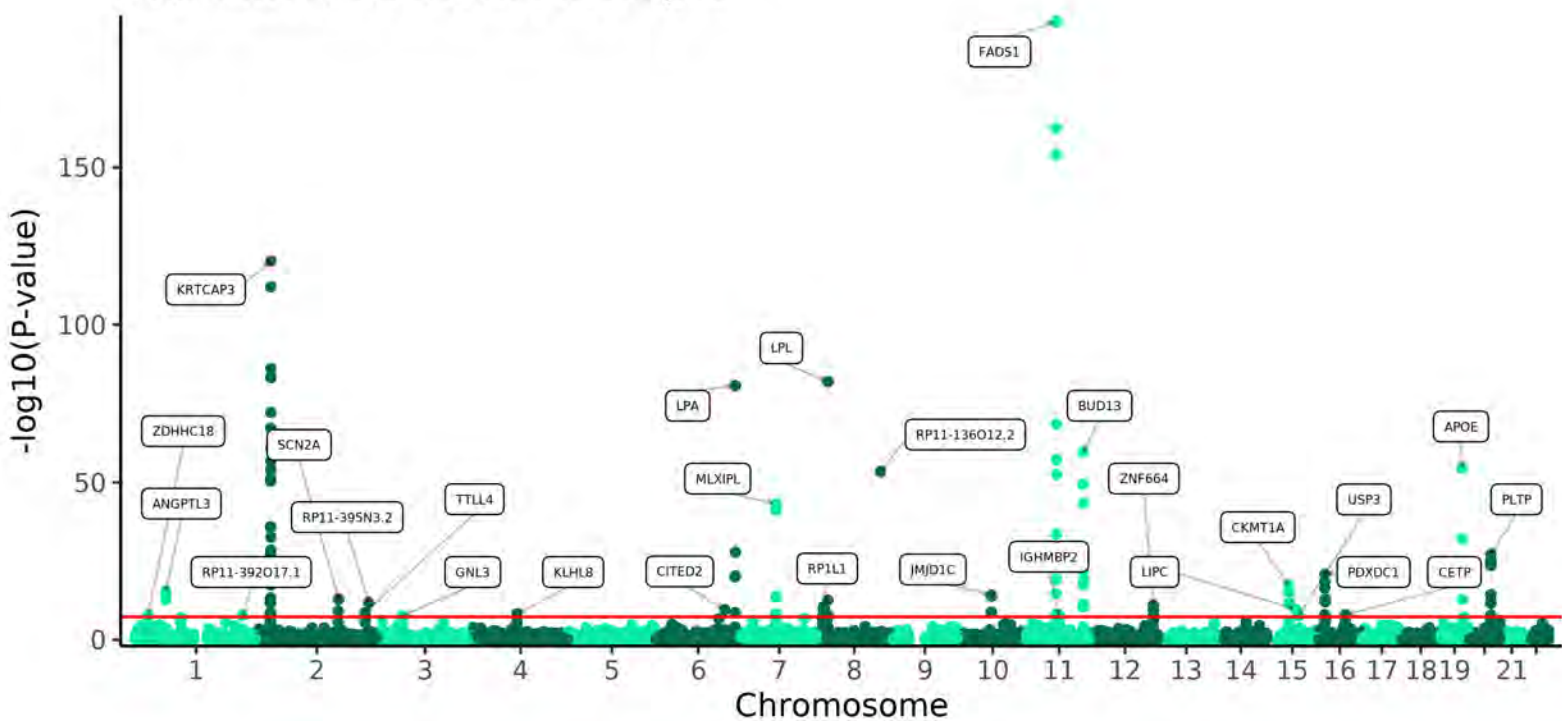
### UKB-EUR SMultiXcan LA pct



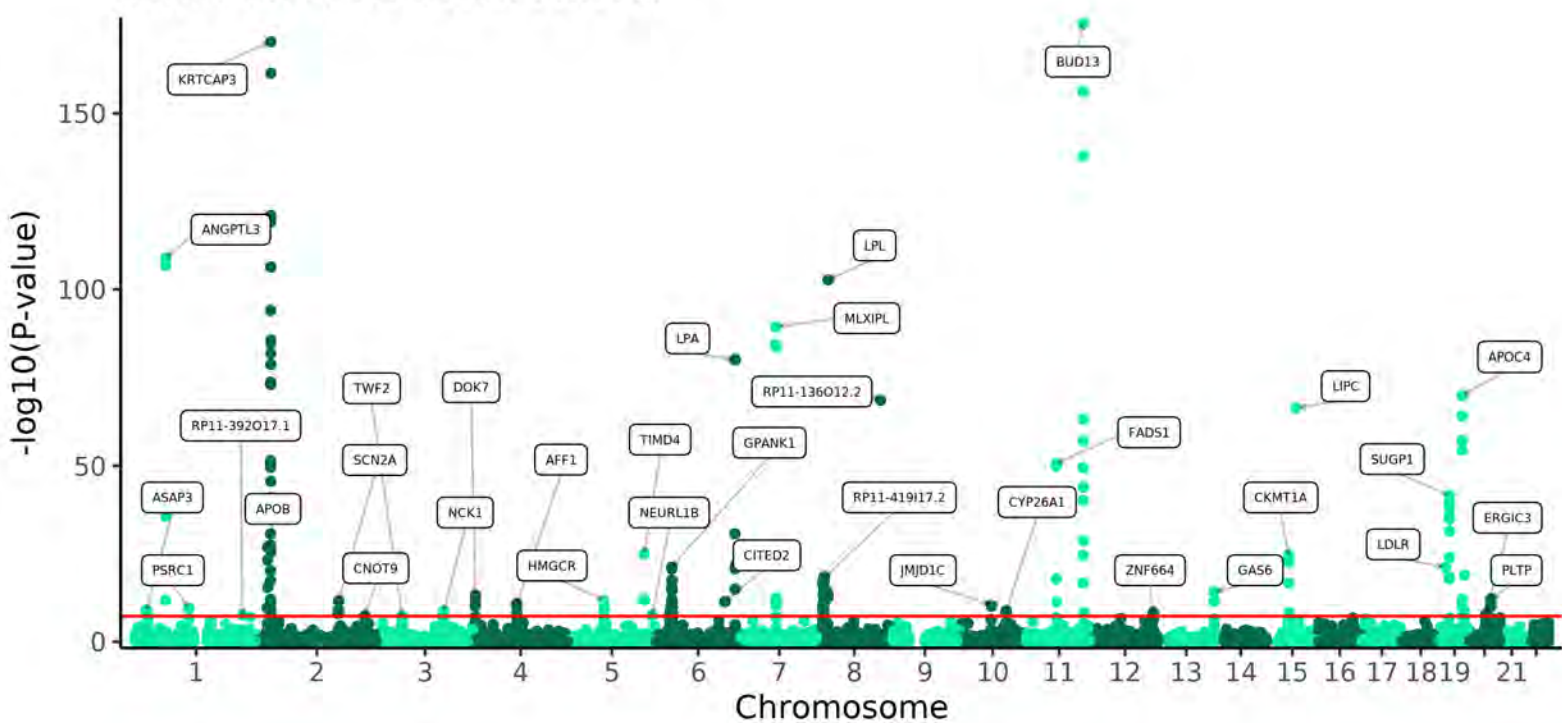
### UKB-EUR SMultiXcan PUFAs



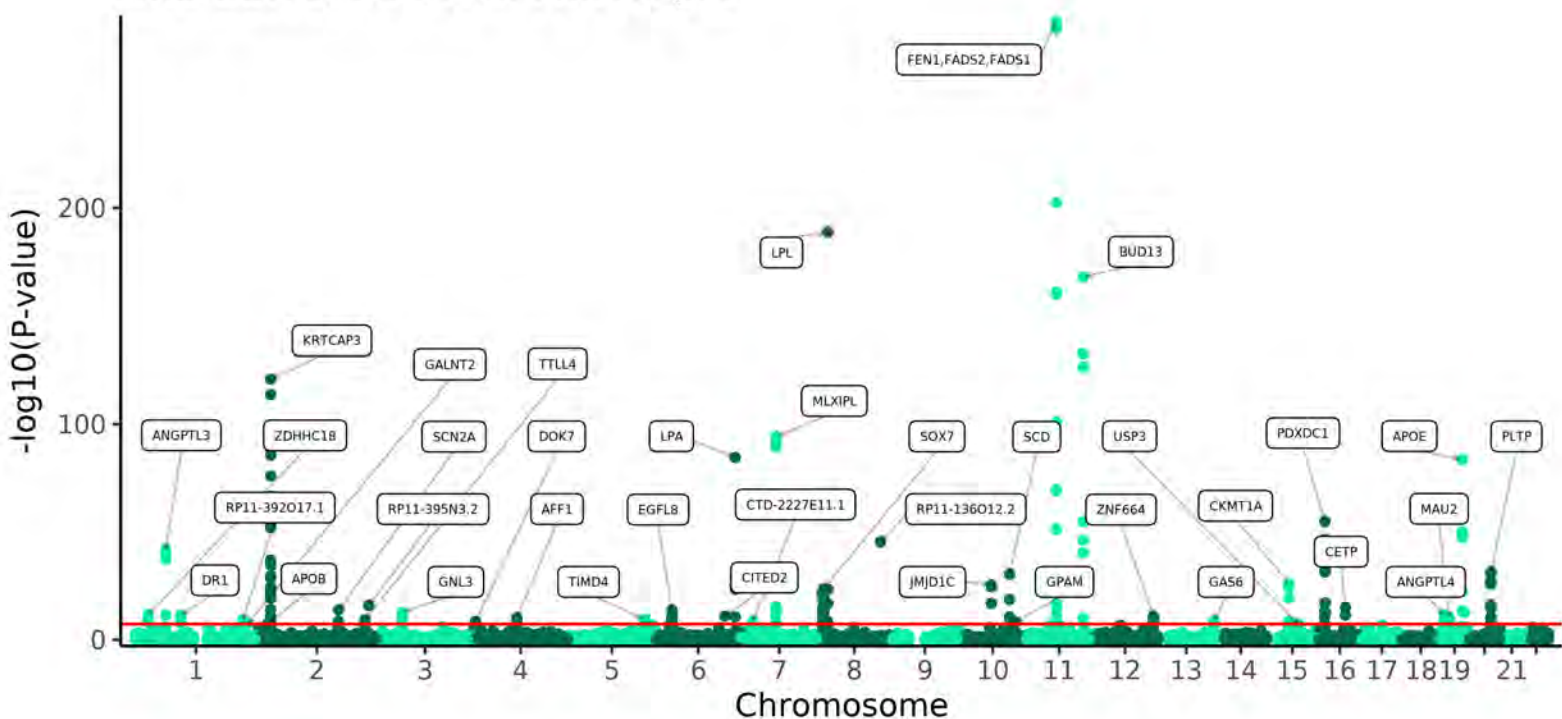
### UKB-EUR SMultiXcan PUFAs pct



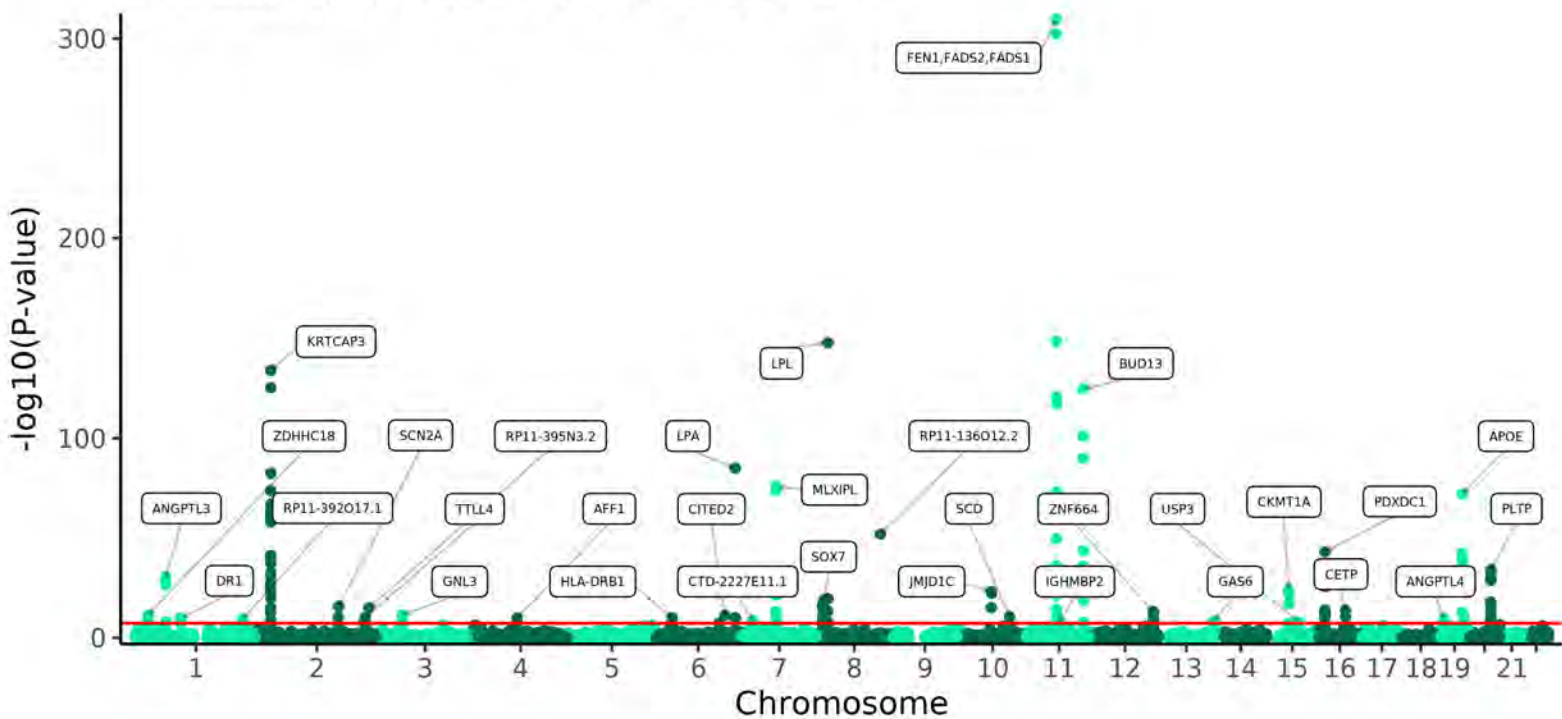
### UKB-EUR SMultiXcan MUFAs



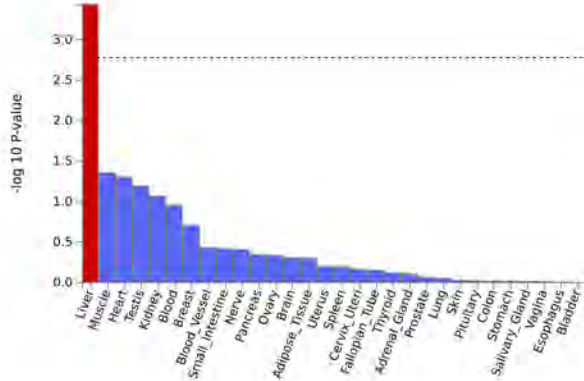
### UKB-EUR SMultiXcan MUFAs pct



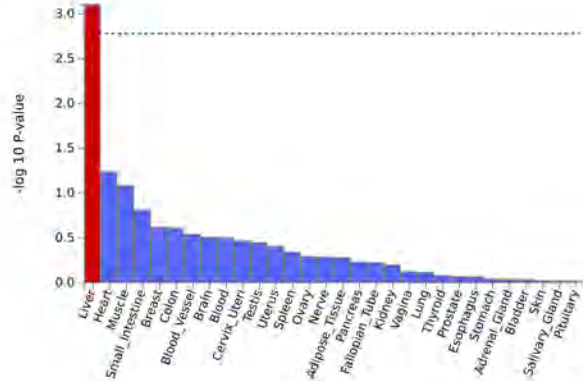
### UKB-EUR SMultiXcan PUFAs:MUFAs ratio



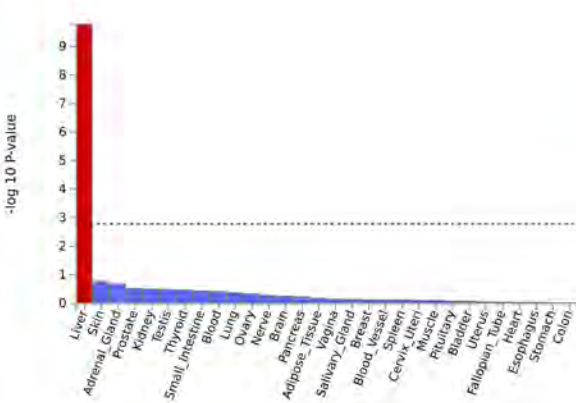
UKB-EUR + FinMetSeq + Ketunnen et al.  
MAGMA Tissue Expression Analysis  
Omega-3



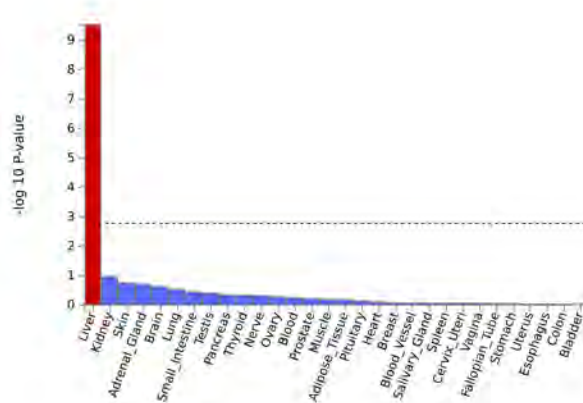
UKB-EUR + FinMetSeq + Ketunnen et al.  
MAGMA Tissue Expression Analysis  
DHA



UKB-EUR + FinMetSeq + Ketunnen et al.  
MAGMA Tissue Expression Analysis  
Omega-6



UKB-EUR + FinMetSeq + Ketunnen et al.  
MAGMA Tissue Expression Analysis  
LA



UKB-EUR + FinMetSeq + Ketunnen et al.  
MAGMA Tissue Expression Analysis  
MUFAs

