

1 **Outcome of COVID-19 in hospitalised immunocompromised patients: an**
2 **analysis of the WHO ISARIC CCP-UK prospective cohort study.**

3

4 Lance Turtle^{1,2*}, Mathew Thorpe^{3*}, Thomas M Drake³, Maaïke Swets⁴, Carlo
5 Palmieri⁵, Clark D Russell⁶, Antonia Ho⁷, Stephen Aston^{2,8}, Daniel G Wootton^{1,2},
6 Alex Richter^{9,10}, Thushan I de Silva¹¹, Hayley E Hardwick¹, Gary Leeming¹², Andy
7 Law¹³, Peter JM Openshaw¹⁴, Ewen M Harrison³, ISARIC4C investigators, J
8 Kenneth Baillie^{13,15**}, Malcolm G Semple^{1,16**}, Annemarie B Docherty^{3,15**}

9

10 * Equal contribution

11 ** Joint senior author

12

13 **Affiliations**

14 1 NIHR Health Protection Research Unit in Emerging and Zoonotic Infections,
15 Department of Clinical Infection, Microbiology and Immunology, Institute of Infection,
16 Veterinary and Ecological Sciences, University of Liverpool, Liverpool, UK

17 2 Liverpool University Hospitals NHS Foundation Trust, Liverpool, UK

18 3 Centre for Medical Informatics, Usher Institute, University of Edinburgh, UK

19 4 Department of Infectious Diseases, Leiden University Medical Centre, Leiden
20 University, Leiden, the Netherlands

21 5 Department of Molecular and Clinical Cancer Medicine, Institute of Systems,
22 Molecular and Integrative Biology, University of Liverpool, Liverpool, UK

23 6 University of Edinburgh Centre for Inflammation Research, Queen's Medical
24 Research Institute, Edinburgh, UK

25 7 MRC-University of Glasgow Centre for Virus Research, University of Glasgow, 464
26 Bearsden Road, Glasgow, UK

27 8 Institute of Infection, Veterinary and Ecological Sciences, University of Liverpool

28 9 Institute of Cancer and Genomic Science, College of Medical and Dental Science,
29 University of Birmingham, UK

30 10 University Hospitals Birmingham NHS Foundation Trust, Birmingham, UK

31 11 Department of Infection, Immunity and Cardiovascular Disease, Medical School,
32 The University of Sheffield, Sheffield, UK

33 12 Department of Biostatistics, University of Liverpool, Liverpool, UK.

34 13 The Roslin Institute, Easter Bush campus, University of Edinburgh, Edinburgh,
35 UK

36 14 National Heart and Lung Institute, Imperial College London, London, UK

37 15 Intensive Care Unit, Royal Infirmary Edinburgh, Edinburgh, UK

38 16 Respiratory Medicine, Alder Hey Children's Hospital, Liverpool, UK

39

NOTE: This preprint reports new research that has not been certified by peer review and should not be used to guide clinical practice.

40 **§ Corresponding author:**

41 Lance Turtle, Ronald Ross Building, Department of Clinical Infection, Microbiology
42 and Immunology, University of Liverpool, 8 West Derby Street, L69 7BE, Liverpool,
43 UK.

44 lance.turtle@liverpool.ac.uk

45

46 **Running title:** Immunocompromise and COVID-19

47 **Keywords:** Immunocompromise; Immunosuppression; SARS-CoV-2; COVID-19

48

49 **Abstract word count:** 254 including titles (249 without)

50 **Main text word count:** 3,486 (30 references)

51

52 **Abstract**

53 Background

54 Immunocompromised patients may be at higher risk of mortality if hospitalised with
55 COVID-19 compared with immunocompetent patients. However, previous studies
56 have been contradictory. We aimed to determine whether immunocompromised
57 patients were at greater risk of in-hospital death, and how this risk changed over the
58 pandemic.

59 Methods

60 We included patients ≥ 19 yrs with symptomatic community-acquired COVID-19
61 recruited to the ISARIC WHO Clinical Characterisation Protocol UK. We defined
62 immunocompromise as: immunosuppressant medication preadmission, cancer
63 treatment, organ transplant, HIV, or congenital immunodeficiency. We used logistic
64 regression to compare the risk of death in both groups, adjusting for age, sex,
65 deprivation, ethnicity, vaccination and co-morbidities. We used Bayesian logistic
66 regression to explore mortality over time.

67 Findings

68 Between 17/01/2020 and 28/02/2022 we recruited 156,552 eligible patients, of whom
69 21,954 (14%) were immunocompromised. 29% (n=6,499) of immunocompromised
70 and 21% (n=28,608) of immunocompetent patients died in hospital. The odds of in-
71 hospital mortality were elevated for immunocompromised patients (adjOR 1.44, 95%
72 CI 1.39-1.50, $p < 0.001$). As the pandemic progressed, in-hospital mortality reduced
73 more slowly for immunocompromised patients than for immunocompetent patients.
74 This was particularly evident with increasing age: the probability of the reduction in
75 hospital mortality being less for immunocompromised patients aged 50-69yrs was
76 88% for men and 83% for women, and for those > 80 yrs was 99% for men, and 98%
77 for women.

78 Conclusions

79 Immunocompromised patients remain at elevated risk of death from COVID-19.
80 Targeted measures such as additional vaccine doses and monoclonal antibodies
81 should be considered for this group.

82 Funding

83 National Institute for Health Research; Medical Research Council; Chief Scientist
84 Office, Scotland.

85

86

87

88

89

90 Introduction

91 Coronavirus disease 2019 (COVID-19), the disease caused by severe acute
92 respiratory syndrome coronavirus 2 (SARS-CoV-2), disproportionately affects older
93 people and those with underlying health conditions (1). However, a key challenge
94 throughout the pandemic has been to delineate which comorbidities confer the
95 greatest risk. Severe COVID-19 is an inflammatory process (2, 3), with several lines
96 of evidence suggesting that immune dysfunction is linked to adverse outcome (4, 5).
97 Consistent with this are clinical trial findings that anti-inflammatory treatments with
98 dexamethasone, tocilizumab and baricitinib improve survival in patients with
99 respiratory failure (6-8).

100 Early data in the pandemic suggested a high mortality among immunocompromised
101 patients, with organ transplant recipients being at particular risk (9, 10). Studies have
102 compared mortality among immunocompromised patients with other patient groups
103 with COVID-19 with conflicting results. Some studies show increased mortality (11,
104 12), whereas others show no difference from other patient groups (13, 14). A
105 challenge when attributing risk to individual comorbidities has been that many factors
106 are correlated. For example, some kidney transplant recipients also have abnormal
107 renal function which is itself a risk factor for poor outcome from COVID-19 (1, 15). A
108 large UK population study using routine health data from 17 million primary care
109 health records (OPENSafely) found that immunocompromising conditions, including
110 organ transplant and haematological malignancy, increased the risk of COVID-19
111 associated death (16). However, detailed information on disease severity at
112 presentation and events during hospitalisation were not available.

113 As public health measures to control the spread of SARS-CoV-2 have now eased,
114 concern remains for the safety of those who are immunocompromised and whose
115 vaccination response may be compromised (17). Our aim was therefore to analyse
116 one of the largest prospective cohorts of hospitalised COVID-19 cases, the ISARIC
117 WHO CCP-UK study dataset, to determine whether outcomes are worse in
118 immunocompromised patients, and whether the improved survival observed in
119 general over the course of the pandemic differed between immunocompromised and
120 immunocompetent patients.

121

122

123 **Methods**

124

125 *Study design and setting:*

126 The ISARIC WHO Clinical Characterisation Protocol in the United Kingdom (CCP-
127 UK) was activated on 17th January 2020 as part of the public health response to the
128 COVID-19 pandemic. CCP-UK prospectively recruited a cohort of >300,000 patients,
129 hospitalised with COVID-19, from 306 healthcare facilities across the UK. The
130 sample size was not pre-specified. The protocol, revision history, case report forms
131 and consent forms, are available online at isaric4c.net. The study received ethical
132 approval from the South Central - Oxford C Research Ethics Committee in England
133 (Ref: 13/SC/0149) and by the Scotland A Research Ethics Committee (Ref:
134 20/SS/0028). This study is reported according to the Strengthening the Reporting of
135 Observational Studies in Epidemiology (STROBE) guidelines for cohort studies.

136

137 *Participants:*

138 Adults (≥ 19 yrs) who were admitted to hospital between 17th January 2020 and 28th
139 February 2022 with confirmed or highly suspected SARS-CoV-2 infection leading to
140 COVID-19 were included in this analysis: during the first wave, highly suspected
141 cases were also eligible for inclusion, because SARS-CoV-2 was an emergent
142 pathogen at that time and laboratory confirmation was dependent on availability of
143 testing. SARS-CoV-2 infection was confirmed using reverse-transcriptase
144 polymerase chain reaction (RT-PCR).

145 *Data sources:*

146 Data collected by research staff were entered into a standardised electronic case
147 report form within a secure Research Electronic Data Capture (REDCap) database.
148 Vaccination data were obtained from the national immunisation management system
149 (NIMS), and deterministically linked to the ISARIC CCP-UK REDCap data using
150 NHS number, which was collected as part of the ISARIC CCP-UK dataset.
151 Vaccination data were not available for Scottish patients and these analyses are
152 therefore restricted to only English and Welsh ISARIC CCP-UK participants with a
153 valid, linkable NHS number. Participants with invalid NHS numbers were excluded
154 from the analysis after December 2020 to allow accurate linkage with vaccination
155 data. Readmissions and those with erroneously recorded admission dates (eg, those
156 with admission dates outside the scope of the study) were also removed prior to
157 analysis.

158

159 *Variables:*

160 Immunocompromise: We considered patients to be immunocompromised if they met
161 any of the following clinical criteria: solid organ transplant, active cancer diagnosis
162 and treatment, congenital immune deficiency, human immunodeficiency (HIV)
163 infection, in receipt of pre-admission immune-suppressive treatments, or pre-
164 admission oral or intravenous steroids (see online supplement). For the purposes of
165 analysis, these patients were only considered to be in one category, with the
166 underlying reason for being immunocompromised being categorised by the following
167 hierarchy: inherited immunological or metabolic disorder > solid organ transplant >

168 cancer > HIV > pre-admission immunosuppressants > pre-admission steroids.
169 Overlap between immunocompromising factors were visualised as part of the
170 analysis.

171

172 Participant characteristics: patient demographics including age, sex, comorbidities,
173 and ethnicity were recorded at hospital admission (see online supplement).
174 Deprivation index was calculated using hospital level geographical data provided by
175 the Office of National Statistics (ONS). Physiological parameters of the 4C Mortality
176 Score (18) were used as markers of illness severity at presentation: respiratory rate
177 (breaths per min), Glasgow Coma Scale, oxygen saturation (%), blood urea
178 (mmol/L), blood C-reactive protein (CRP, mg/L). Symptoms recorded on admission
179 are listed in the online supplement. If no symptom criteria were met, a patient was
180 considered asymptomatic and was excluded from the analysis. If a patient met at
181 least one of the criteria, they were considered to be symptomatic and were included.

182

183 In-hospital interventions were recorded including: critical care admission, level of
184 respiratory support and treatments for COVID-19 including corticosteroids and
185 interleukin-6 receptor blockers. For steroid and anti-IL-6 treatments, analyses were
186 restricted to patients on oxygen therapy. Treatment with IL-6 receptor blockers was
187 indicated by national guidance for patients with a C-reactive protein (CRP) blood
188 level of 75mg/l or greater, or on respiratory support. Due to the nature of the data
189 collection, pre-admission steroids were assessed through a free text search of pre-
190 admission medication; dexamethasone, beclometasone, prednisolone,
191 cortisone/hydrocortisone or betamethasone were included.

192

193 Vaccination: to investigate the effect of vaccination, we considered patients having
194 received no vaccine doses or within 20 days of the first vaccine dose as being
195 unprotected and therefore having no immunity to SARS-CoV-2; we then stratified
196 patients as having received 1, 2, 3 and 4 or more doses, provided three weeks or
197 more had elapsed between the first vaccination and symptom onset or positive RT-
198 PCR test (whichever was earlier), or one week for subsequent doses, to allow
199 immunity to develop (19).

200

201 Pandemic waves and SARS-CoV-2 variants: wave 1 was considered to be between
202 17th January 2020, the date that the study protocol was activated in the UK, and 31st
203 August 2020, the nadir of hospital inpatient numbers between the first and second
204 waves. This wave was largely accounted for by the B.1 lineage SARS-CoV-2
205 ancestral strain containing the D614G mutation. Wave 2 was defined as the period
206 from 1st September 2020 to 31st March 2021, and comprised a mixture largely of B.1
207 D614G lineages and the alpha variant (B.1.1.7). The third wave, during which the
208 alpha variant was replaced by the delta variant (B.1.617.2), was between 1st April
209 2021 and 12th December 2021. From 13th December 2021 onwards, omicron
210 (B.1.1.529) became the dominant circulating variant in the UK and out-competed
211 delta (20). We refer to this period as the fourth wave.

212

213 Outcomes: the primary outcome was in-hospital mortality. Secondary outcomes were
214 the use of oxygen, non-invasive ventilation, invasive mechanical ventilation and
215 admission to critical care.

216

217 *Missing data:*

218 Due to the nature of such a large-scale, observational study, conducted during
219 pandemic surge conditions, high degrees of missingness exist in multiple variables,
220 particularly in the most recent wave dominated by the Omicron variant where
221 recruitment has waned over time. As this study is predominantly descriptive, we
222 have not performed any imputation to correct any data missingness, and instead are
223 providing descriptions of the data as it is known.

224

225 *Statistical analyses:*

226 Continuous data are summarised as median (interquartile range) and categorical
227 data as frequency (percentage). We employed statistical disclosure control (SDC)
228 measures to protect patient confidentiality and anonymity.

229

230 To examine in-hospital mortality, we initially performed multivariable logistic
231 regression adjusted for age, sex, number of comorbidities, ethnicity, deprivation
232 index and vaccination (1). These variables were selected for inclusion in models
233 based on their important effects previously described by ourselves and others (1,
234 21). Other outcome measures were the use of oxygen, non-invasive ventilation,
235 intensive care admission and invasive ventilation, and were adjusted for the same
236 variables. We subsequently explored whether changes in in-hospital mortality over
237 time were different between immunocompetent and immunocompromised patients. A
238 Bayesian logistic regression model was specified with weakly informative priors on
239 model coefficients (four chains, 500 warmup, 2,000 iterations). The probability of
240 death was determined for immunocompromised and immunocompetent patients in
241 the first wave and the fourth wave, accounting for age, sex, socioeconomic
242 deprivation, and comorbidity count. We then calculated the absolute risk difference
243 for mortality in immunocompromised and immunocompetent patients in the first wave
244 and compared this with the absolute risk difference in the omicron wave. We set
245 comorbidity count to "2+", and deprivation score to "2", the most common level for
246 each variable, and stratified these results by sex, age category, and vaccination
247 status. All analysis was performed using the statistical software package R version
248 4.1.1 including the use of the associated packages tidyverse, finalfit and brms.

249

250 Results

251

252 Between 17th January 2020 and 28th February 2022, data for 304,628 admissions of
253 all ages were collected. Outcome data were available for 156,552 unique adult index
254 admissions with symptomatic COVID-19 and valid NHS numbers (Figure S1).
255 134,598 (86%) patients were classified as immunocompetent, and 21,954 (14%)
256 were immunocompromised (Figure S1). There was overlap between the
257 immunocompromising conditions (Figure 1A), for example a large proportion of
258 patients with previous solid organ transplant were also taking immunosuppressive
259 medication. Using the hierarchical categorisation defined above, most patients that
260 were identified as immunocompromised were either those taking
261 immunosuppressive medication with no other documented immunocompromise
262 (n=12,701 of 21,954, 58%), or those who had received recent cancer treatment
263 (n=5,116, 23%). The numbers of patients with other conditions were: congenital
264 immune deficiency (n=526, 2%), previous solid organ transplant (1,559, 7%),
265 HIV/AIDS (498, 2%) and pre-admission steroids (n=1,554, 7%).

266

267 The median age of the immunocompetent patients was 69.5 years (IQR 53.4 to
268 82.0), and was slightly younger than that of the immunocompromised group which
269 was 71.5 (IQR 58.7 to 80.3) (Table 1). Ages of immunocompromised patients varied
270 depending on the aetiology of their immunocompromise. Those with cancer (median
271 age 72.0. IQR (62.0 to 79.7)) and those on pre-admission immunosuppressants
272 (median 72.5, IQR (59.1 to 81.2)) or corticosteroids (75.1 (63.0 to 83.6)) were
273 considerably older than those with congenital immune deficiency (median 61.8, IQR
274 (45.3 to 77.2)), solid organ transplant (median 62.4 (IQR 52.1 to 72.0)) and HIV (57.8
275 (IQR 49.8 to 70.5)). 95% (n=20,801 of 21,954) of patients with immunocompromise
276 had at least one additional comorbidity (in addition to the reason for
277 immunocompromise). Chronic pulmonary disease (n=6,190 of 21,954, (28%),
278 immunocompromised) vs (n=18,495 of 134,598, (14%), immunocompetent),
279 haematologic disease (n=2,041 (9%)) vs (n=3,665 (2%)), rheumatologic disease
280 (n=4,540 (21%)) vs (n=12,901 (10%)), kidney disease (n=4,266 (19%)) vs (n=18,901
281 (14%)), and malignant neoplasm (n=5,113 (23%)) vs (n=8,484 (6%)) were more
282 common in immunocompromised vs immunocompetent patients. Diabetes (n=6,042
283 (28%) immunocompromised) vs (n=36,322 (27%) immunocompetent), obesity
284 (n=2,945 (13%)) vs (n=17,462 (13%)), hypertension (n=9,758 (44%)) vs (n=57,117
285 (42%)), chronic cardiac disease (n=6,607 (30%)) vs (n=35,597 (26%)) were similar in
286 both groups (Table 1).

287

288 Overall, 85% (n=114,364 of 134,598) of immunocompetent and 81% (n=17,737 of
289 21,954) of immunocompromised patients hospitalised with COVID-19 were
290 unvaccinated – 49% (n=76,948 of 156,552) were admitted before vaccines were
291 available in waves 1 and 2 (Table 1, Figure S1). 5,112 (4%) of immunocompetent
292 and 789 (4%) of immunocompromised patients admitted had received one dose of
293 vaccine > 20 days earlier at the time of hospital admission. 11,601 (9%)
294 immunocompetent and 2804 (13%) immunocompromised patients had received two
295 doses > 7 days earlier. 592 (<1%) immunocompetent and 290 (1%) of
296 immunocompromised patients had received 3 doses >7 days before the date of

297 hospital admission (Table 1). Over time, the relative proportion of
298 immunocompromised patients who were unvaccinated was less than for
299 immunocompetent patients (Figure S2).

300

301 Presenting symptoms and severity of illness:

302 Illness severity at presentation to hospital as measured by the physiological
303 components of the 4C Mortality Score was similar in the two groups at the beginning
304 of the pandemic, suggesting no difference in the threshold for admission for
305 immunocompromised patients (Figure 1B). Illness severity reduced in both groups
306 over the course of the pandemic, although to a lesser extent in the
307 immunocompromised group (Figure 1B and C). When compared with
308 immunocompetent patients, in the omicron wave immunocompromised patients had
309 higher respiratory rates (≥ 30 bpm 67% vs immunocompetent 57%), lower SaO₂
310 (<92% 22% vs 15%), higher urea (urea ≥ 7 mmol/l 49% vs 39%) and a higher
311 inflammatory response (CRP ≥ 50 mg/l 57% vs 47%) (Table S2, Figure 1C).

312

313 Treatments received:

314 When restricted to patients receiving oxygen, more patients in the
315 immunocompromised group received corticosteroids than the immunocompetent
316 group (Table S3, Figure S3). For patients on oxygen with a CRP > 75, more
317 immunocompetent patients received tocilizumab compared with
318 immunocompromised patients (Table S3, Figure S4).

319

320 Outcomes:

321 Similar proportions of immunocompromised and immunocompetent patients received
322 oxygen therapy and were admitted to critical care. Immunocompromised patients
323 were more likely to receive non-invasive ventilation, and/or invasive mechanical
324 ventilation (Table 2). 6,499 (29%) immunocompromised patients died, compared
325 with 28,608 (21%) immunocompetent patients. The highest mortality rates were seen
326 in patients with active cancer (n=1,818 (37%)) and those on pre-admission steroids
327 (n=517 (34%)) (Table S4).

328

329 After adjustment for age, sex, ethnicity, deprivation and comorbidities, the odds ratio
330 (OR) for death in the immunocompromised group was 1.44 (95% CI 1.39-1.5, $p <$
331 0.001) (Figure 2A). The ORs of several other outcomes were significantly different
332 for immunocompromised relative to immunocompetent patients, though with much
333 smaller effect sizes. The OR for receiving oxygen was 1.10 (95% CI 1.06, 1.15,
334 $p < 0.001$), for critical care admission was 1.08 (95% CI 1.03, 1.13, $p = 0.001$), receiving
335 non-invasive ventilation 1.17 (95% CI 1.12, 1.22, $p < 0.001$), and invasive ventilation
336 1.10 (95% CI 1.03, 1.18, $p = 0.005$) (Figure 2A).

337

338 Changes in mortality over time:

339 Mortality for both immunocompetent and immunocompromised groups reduced over
340 time. Crude in-hospital mortality of immunocompetent patients in the first wave was

341 30%, compared with 36% in immunocompromised patients. In the fourth (omicron)
342 wave, the mortality was 11% for immunocompetent patients, and 19% for
343 immunocompromised patients (Table 2).

344

345 After adjustment for age, sex, comorbidity count, deprivation and vaccination status,
346 compared with immunocompetent patients in wave 1, the OR for mortality remained
347 elevated in all waves in immunocompromised patients (Figure 2B). Univariable
348 analysis showed the same trend (Figure S5). In the fourth wave, nearly a year after
349 the vaccination program was initiated, the OR for death compared with the first wave
350 was 0.38 (95%CI 0.34, 0.42, $p < 0.001$) for immunocompetent patients and 0.63
351 (95%CI 0.51, 0.76, $p < 0.001$) for immunocompromised patients (Figure 2B). There
352 was a decline in the number of patients enrolled in the study over time (Figure S6).

353

354 To investigate this further, we calculated the difference in risk of death between the
355 first and fourth waves for both immunocompetent and immunocompromised patients.
356 using the Bayesian framework described in the methods, the probability that this
357 difference was less for immunocompromised patients (indicating less improvement
358 over the course of the pandemic) was always greater than 67% (Figure 3). Across all
359 ages, and both sexes, in-hospital mortality for immunocompromised patients
360 improved less than for immunocompetent patients. This was particularly evident with
361 increasing age: the probability of the reduction in hospital mortality being less for
362 immunocompromised patients aged 50-69yrs was 88% for men and 83% for women,
363 and for those >80yrs was 99% for men, and 98% for women.

364

365 Discussion

366

367 Using the ISARIC CCP-UK cohort, we found that immunocompromised people
368 admitted to hospital with COVID-19 had greater adjusted mortality than the general
369 in-patient population. Mortality in this group has also not fallen to the same extent as
370 the immunocompetent patients. Over the course of the pandemic,
371 immunocompromised patients have seen less reduction in severity at presentation to
372 hospital and less improvement in in-hospital mortality than immunocompetent
373 patients.

374

375 Large population studies early in the pandemic have suggested that patients who are
376 immunocompromised are more likely to die from COVID-19 than those who are
377 immunocompetent (16). However, several studies, including one of the largest to
378 date (22), have not shown an increased risk of in-hospital mortality in
379 immunocompromised patients when compared to those with no known
380 immunodeficiency. One possible explanation for this is that immunocompromised
381 patients are more likely to be admitted to hospital, but once hospitalised, the
382 outcomes are similar. Our data challenge this hypothesis. Once admitted, the odds
383 of in-hospital mortality (adjusted for age, sex, ethnicity, vaccination and co-
384 morbidities) were higher for the immunocompromised group, with less improvement
385 in outcome over the course of the pandemic compared with the immunocompetent
386 group. Disease severity (physiological derangement) at presentation was similar for
387 the two groups early in the pandemic. Whilst severity at presentation has decreased
388 for both groups over time, as the pandemic progressed, the improvement seen was
389 greater for immunocompetent patients. Immunocompromised patients are now on
390 average more ill relative to immunocompetent patients. Other possibilities for
391 differences between studies potentially include selection of patient groups to include,
392 criteria for hospital admission and socio-ethnodemographic variation.

393

394 Immunocompromised patients with COVID-19 received steroids more frequently
395 during their admission than immunocompetent patients. This might indicate a
396 continuation of pre-admission, non-covid related steroid treatment. The less frequent
397 use of tocilizumab, on the other hand (in patients who met the criteria for use), may
398 indicate concern about the net state of immune suppression and careful weighing of
399 risk benefit in the minds of treating clinicians. To better inform the use of anti-
400 inflammatory treatments in this group, future studies targeted at
401 immunocompromised patients, or with recruitment stratified by immune status, would
402 be needed.

403

404 There was a reduction over time in the proportion of patients admitted after
405 vaccination compared with those unvaccinated. However, the risk difference
406 between immunocompromised and immunocompetent patients widened between the
407 first wave, and the fourth wave, by which time vaccination levels in the population
408 were high. In combination with our earlier work (23), this indicates that this group of
409 patients may remain more vulnerable than the general population even after
410 vaccination. Selection of SARS-CoV-2 variants is largely a function of transmissibility
411 (24, 25), or immune escape (26), and a future variant could still have higher intrinsic

412 virulence than omicron. In this case, immunocompromised patients might be more
413 vulnerable despite vaccination.

414

415 Our findings differ to those of Andersen *et al.* (22), which did not find an increase in
416 mortality in immunocompromised patients from 42 US health systems. A difference
417 in age may explain this discrepancy. The mean age of patients reported by Andersen
418 *et al.* (59 years) was younger than our median age (71.5 years), suggesting that the
419 difference between the two studies could be that here we are describing an older,
420 more co-morbid population. In our study chronic pulmonary, haematologic,
421 rheumatologic, kidney and liver disease were all more common in
422 immunocompromised patients, which may reflect either the reasons for
423 immunosuppression, or complications thereof. However, comorbidities such as heart
424 disease and hypertension were not more common in the immunocompromised
425 patients, indicating that differences in comorbidity were not the only reason for the
426 difference in outcomes between the groups.

427

428 The ISARIC CCP-UK cohort is one of the largest datasets of hospitalised patients
429 with COVID-19 in the world and has enabled us to study small subgroups such as
430 those with congenital immune deficiencies, which have not been captured in smaller
431 cohorts. The ISARIC CCP-UK dataset has detailed information regarding severity of
432 illness at presentation which allowed us to explore whether the threshold for hospital
433 admission differed between patient groups. We were also able to follow patient
434 journeys through the hospital looking at in-hospital interventions and respiratory
435 support which are lacking from routine healthcare datasets. There are some
436 weaknesses to this study. We did not collect data on the detailed drug histories of
437 patients prior to admission, and so we did not have information on which drug was
438 responsible for immunocompromise. We lacked data on pre-admission steroid
439 doses, meaning that we were unable to assess the extent to which steroid use
440 contributed to immune compromise. Missing data in the medical and drug histories
441 means that we may have underestimated the overall effect size by categorising
442 some immunocompromised patients as immunocompetent.

443

444 We have observed that in hospital mortality for patients who are clinically extremely
445 vulnerable with immunocompromise has fallen less than for than immunocompetent
446 patients in the ISARIC CCP-UK dataset. Despite the benefits of vaccination, this
447 group still lags behind the general patient population in the improvements in
448 outcomes after hospitalisation. A number of interventions, such as remdesivir,
449 molnupiravir and nirmatrelvir/ritonavir are now available to reduce the risk of
450 progression to severe COVID-19 and hospitalisation in this patient group (27, 28).
451 However, some immunocompromised patients do not respond well to COVID-19
452 vaccines (29). and several monoclonal antibody treatments have now ceased to be
453 effective due to antigenic variation of the omicron variant (30). However,
454 tixagevimab/cilgavimab retains activity against omicron sub-variants BA.2, BA.4 and
455 BA.5, but is not available for routine clinical care in the UK. The use of
456 tixagevimab/cilgavimab remains a policy option and may close the gap between
457 immunocompromised patients and the general population.

458

459
460
461
462
463
464
465
466
467
468
469
470
471
472
473
474
475
476
477
478
479
480
481
482
483
484
485
486
487
488
489
490
491
492
493
494
495
496
497
498
499
500
501
502
503
504
505
506
507
508

Acknowledgements

This work is supported by grants from: the National Institute for Health Research (NIHR) [award CO-CIN-01], the Medical Research Council [grant MC_PC_19059 and MR/V028979/1], the Chief Scientist Office, Scotland, and by the NIHR Health Protection Research Unit (HPRU) in Emerging and Zoonotic Infections at University of Liverpool in partnership with the UK Health Security Agency (UK-HSA), in collaboration with Liverpool School of Tropical Medicine and the University of Oxford [award 200907], NIHR HPRU in Respiratory Infections at Imperial College London with UK-HSA [award 200927], Wellcome Trust and Department for International Development [215091/Z/18/Z], the Bill and Melinda Gates Foundation [OPP1209135], Liverpool Experimental Cancer Medicine Centre (Grant Reference: C18616/A25153), NIHR Biomedical Research Centre at Imperial College London [IS-BRC-1215-20013], EU Platform for European Preparedness Against (Re-) emerging Epidemics (PREPARE) [FP7 project 602525]. We acknowledge the NIHR Clinical Research Network for providing infrastructure support for this research. This research is part of the Data and Connectivity National Core Study, led by Health Data Research UK in partnership with the Office for National Statistics and funded by UK Research and Innovation (grant ref MC_PC_20029). LT is supported by a Wellcome Trust clinical career development fellowship a [205228/Z/16/Z]. PJMO is supported by a NIHR Senior Investigator Award [award 201385]. DGW is supported by an NIHR Advanced Fellowship [NIHR300669]. For the purpose of Open Access, the authors have applied a CC-BY public copyright licence to any Author Accepted Manuscript version arising from this submission. The views expressed are those of the authors and not necessarily those of the DHSC, DID, NIHR, MRC, Wellcome Trust or UK-HSA.

Data availability

This work uses data provided by patients and collected by the NHS as part of their care and support #DataSavesLives. The CO-CIN data was collated by ISARIC4C Investigators. ISARIC4C welcomes applications for data and material access through our Independent Data and Material Access Committee (<https://isaric4c.net>).

ISARIC4C investigators:

**Co-Lead Investigator (Consortium Lead):* J Kenneth Baillie.

**Co-Lead Investigator (Sponsor & Protocol CI):* Malcolm G Semple.

**Co-Lead Investigator (Imperial College):* Peter JM Openshaw.

Co-Investigator: Beatrice Alex, Petros Andrikopoulos, Benjamin Bach, Wendy S Barclay, Debby Bogaert, Meera Chand, Kanta Chechi, Graham S Cooke, Ana da Silva Filipe, Thushan de Silva, Annemarie B Docherty, Gonçalo dos Santos Correia, Marc-Emmanuel Dumas, Jake Dunning, Tom Fletcher, Christopher A Green, William Greenhalf, Julian L Griffin, Rishi K Gupta, Ewen M Harrison, Julian A Hiscox, Antonia Ying Wai Ho, Karl Holden, Peter W Horby, Samreen Ijaz, Saye Khoo, Paul Klenerman, Andrew Law, Matthew R Lewis, Sonia Liggi, Wei Shen Lim, Lynn Maslen, Alexander J Mentzer, Laura Merson, Alison M Meynert, Shona C Moore, Mahdad Noursadeghi, Michael Olanipekun, Anthonia Osagie, Massimo Palmarini, Carlo Palmieri, William A Paxton, Georgios Pollakis, Nicholas Price, Andrew

509 Rambaut, David L Robertson, Clark D Russell, Vanessa Sancho-Shimizu, Caroline J
510 Sands, Janet T Scott, Louise Sigfrid, Tom Solomon, Shiranee Sriskandan, David
511 Stuart, Charlotte Summers, Olivia V Swann, Zoltan Takats, Panteleimon Takis,
512 Richard S Tedder, AA Roger Thompson, Emma C Thomson, Ryan S Thwaites,
513 Lance CW Turtle, Maria Zambon.
514 *Data Analyst:* Thomas M Drake, Cameron J Fairfield, Stephen R Knight, Kenneth A
515 Mclean, Derek Murphy, Lisa Norman , Riinu Pius, Catherine A Shaw.
516 *Data and Information System Manager:* Marie Connor, Jo Dalton, Carrol Gamble,
517 Michelle Girvan, Sophie Halpin, Janet Harrison, Clare Jackson, James Lee, Laura
518 Marsh, Daniel Plotkin, Stephanie Roberts, Egle Saviciute.
519 *Data Integration and Presentation:* Sara Clohisey, Ross Hendry, Susan Knight, Eva
520 Lahnsteiner, Andrew Law, Gary Leeming, Lucy Norris, James Scott-Brown, Sarah
521 Tait, Murray Wham.
522 *ISARIC Clinical Coordinator:* Gail Carson.
523 *Edinburgh Laboratory Staff and Volunteers:* Richard Clark, Audrey Coutts, Lorna
524 Donnelly, Angie Fawkes, Tammy Gilchrist, Katarzyna Hafezi, Louise MacGillivray,
525 Alan Maclean, Sarah McCafferty, Kirstie Morrice, Lee Murphy, Nicola Wrobel.
526 *Local Principal Investigators:* Kayode Adeniji, Daniel Agranoff, Ken Agwuh, Dhiraj
527 Ail, Erin L. Aldera, Ana Alegria, Sam Allen, Brian Angus, Abdul Ashish, Dougal
528 Atkinson, Shahedal Bari, Gavin Barlow, Stella Barnass, Nicholas Barrett, Christopher
529 Bassford, Sneha Basude, David Baxter, Michael Beadsworth, Jolanta Bernatoniene,
530 John Berridge, Colin Berry, Nicola Best, Pieter Bothma, Robin Brittain-Long, Naomi
531 Bulteel, Tom Burden, Andrew Burtenshaw, Vikki Caruth, David Chadwick, David
532 Chadwick, Duncan Chamblor, Nigel Chee, Jenny Child, Srikanth Chukkambotla,
533 Tom Clark, Paul Collini, Catherine Cosgrove, Jason Cupitt, Maria-Teresa Cutino-
534 Moguel, Paul Dark, Chris Dawson, Samir Dervisevic, Phil Donnison, Sam
535 Douthwaite, Andrew Drummond, Ingrid DuRand, Ahilanadan Dushianthan, Tristan
536 Dyer, Cariad Evans, Chi Eziefula, Chrisopher Fegan, Adam Finn, Duncan Fullerton,
537 Sanjeev Garg, Sanjeev Garg, Atul Garg, Effrossyni Gkrania-Klotsas, Jo Godden,
538 Arthur Goldsmith, Clive Graham, Tassos Grammatikopoulos, Elaine Hardy, Stuart
539 Hartshorn, Daniel Harvey, Peter Havalda, Daniel B Hawcutt, Maria Hobrok, Luke
540 Hodgson, Anil Hormis, Joanne Howard, Michael Jacobs, Susan Jain, Paul Jennings,
541 Agilan Kaliappan, Vidya Kasipandian, Stephen Kegg, Michael Kelsey, Jason
542 Kendall, Caroline Kerrison, Ian Kerlake, Oliver Koch, Gouri Koduri, George Koshy,
543 Shondipon Laha, Steven Laird, Susan Larkin, Tamas Leiner, Patrick Lillie, James
544 Limb, Vanessa Linnett, Jeff Little, Mark Lyttle, Michael MacMahon, Emily
545 MacNaughton, Ravish Mankregod, Huw Masson, Elijah Matovu, Katherine
546 McCullough, Ruth McEwen, Manjula Meda, Gary Mills, Jane Minton, Mariyam
547 Mirfenderesky, Kavya Mohandas, Quen Mok, James Moon, Elinoor Moore, Patrick
548 Morgan, Craig Morris, Katherine Mortimore, Samuel Moses, Mbiye Mpenge,
549 Rohinton Mulla, Michael Murphy, Thapas Nagarajan, Megan Nagel, Mark Nelson,
550 Lillian Norris, Matthew K. O'Shea, Marlies Ostermann, Igor Otahal, Mark Pais, Carlo
551 Palmieri, Selva Panchatsharam, Danai Papakonstantinou, Padmasayee Papineni,
552 Hassan Paraiso, Brij Patel, Natalie Pattison, Justin Pepperell, Mark Peters, Mandeep
553 Phull, Stefania Pintus, Tim Planche, Frank Post, David Price, Rachel Prout, Nikolas
554 Rae, Henrik Reschreiter, Tim Reynolds, Neil Richardson, Mark Roberts, Devender
555 Roberts, Alistair Rose, Guy Rousseau, Bobby Ruge, Brendan Ryan, Taranprit
556 Saluja, Sarah Cole, Matthias L Schmid, Aarti Shah, Manu Shankar-Hari, Prad
557 Shanmuga, Anil Sharma, Anna Shawcross, Jagtur Singh Pooni, Jeremy Sizer,
558 Richard Smith, Catherine Snelson, Nick Spittle, Nikki Staines, Tom Stambach,

559 Richard Stewart, Pradeep Subudhi, Tamas Szakmany, Kate Tatham, Jo Thomas,
560 Chris Thompson, Robert Thompson, Ascanio Tridente, Darell Tupper-Carey, Mary
561 Twagira, Nick Vallotton, Rama Vancheeswaran, Lisa Vincent-Smith, Shico
562 Visuvanathan, Alan Vuylsteke, Sam Waddy, Rachel Wake, Andrew Walden,
563 Ingeborg Welters, Tony Whitehouse, Paul Whittaker, Ashley Whittington, Meme
564 Wijesinghe, Martin Williams, Lawrence Wilson, Stephen Winchester, Martin Wiselka,
565 Adam Wolverson, Daniel G Wootton, Andrew Workman, Bryan Yates, Peter Young.
566 *Material Management:* Sarah E McDonald, Victoria Shaw.
567 *Outbreak Laboratory Staff and Volunteers:* Katie A. Ahmed, Jane A Armstrong,
568 Milton Ashworth, Innocent G Asimwe, Siddharth Bakshi, Samantha L Barlow, Laura
569 Booth, Benjamin Brennan, Katie Bullock, Nicola Carlucci , Emily Cass, Benjamin WA
570 Catterall, Jordan J Clark, Emily A Clarke, Sarah Cole, Louise Cooper, Helen Cox,
571 Christopher Davis, Oslem Dincarslan, Alejandra Doce Carracedo, Chris Dunn, Philip
572 Dyer, Angela Elliott, Anthony Evans, Lorna Finch, Lewis WS Fisher, Lisa Flaherty,
573 Terry Foster, Isabel Garcia-Dorival, Philip Gunning, Catherine Hartley, Anthony
574 Holmes, Rebecca L Jensen, Christopher B Jones, Trevor R Jones, Shadia
575 Khandaker, Katharine King, Robyn T. Kiy, Chrysa Koukorava, Annette Lake,
576 Suzannah Lant, Diane Latawiec, Lara Lavelle-Langham, Daniella Lefteri, Lauren
577 Lett, Lucia A Livoti, Maria Mancini, Hannah Massey, Nicole Maziere, Sarah
578 McDonald, Laurence McEvoy, John McLauchlan, Soeren Metelmann, Nahida S
579 Miah, Joanna Middleton, Joyce Mitchell, Shona C Moore, Ellen G Murphy, Rebekah
580 Penrice-Randal, Jack Pilgrim, Tessa Prince, Will Reynolds, P. Matthew Ridley,
581 Debby Sales, Victoria E Shaw, Rebecca K Shears, Benjamin Small, Krishanthi S
582 Subramaniam, Agnieszka Szemiel, Aislynn Taggart, Jolanta Tanianis-Hughes, Jordan
583 Thomas, Erwan Trochu, Libby van Tonder, Eve Wilcock, J. Eunice Zhang.
584 *Patient Engagement:* Seán Keating.
585 *Project Administrator:* Cara Donegan, Rebecca G. Spencer, Lauren Obosi.
586 *Project Manager:* Chloe Donohue, Fiona Griffiths, Hayley Hardwick, Wilna
587 Oosthuyzen.
588
589
590
591
592
593

594 **References**

595

- 596 1. Docherty AB, Harrison EM, Green CA, Hardwick HE, Pius R, Norman L, et al.
597 Features of 20 133 UK patients in hospital with covid-19 using the ISARIC WHO
598 Clinical Characterisation Protocol: prospective observational cohort study. *BMJ*.
599 2020 May 22;369:m1985.32444460
- 600 2. Dorward DA, Russell CD, Um IH, Elshani M, Armstrong SD, Penrice-Randal
601 R, et al. Tissue-Specific Immunopathology in Fatal COVID-19. *American Journal of*
602 *Respiratory and Critical Care Medicine*. 2021;203(2):192-201
- 603 3. Thwaites RS, Sanchez Sevilla Uruchurtu A, Siggins MK, Liew F, Russell CD,
604 Moore SC, et al. Inflammatory profiles across the spectrum of disease reveal a
605 distinct role for GM-CSF in severe COVID-19. *Sci Immunol*. 2021 Mar
606 10;6(57).33692097
- 607 4. Kuri-Cervantes L, Pampena MB, Meng W, Rosenfeld AM, Ittner CAG,
608 Weisman AR, et al. Comprehensive mapping of immune perturbations associated
609 with severe COVID-19. *Science Immunology*. 2020;5(49):eabd7114
- 610 5. Hoepel W, Chen HJ, Geyer CE, Allahverdiyeva S, Manz XD, de Taeye SW, et
611 al. High titers and low fucosylation of early human anti-SARS-CoV-2 IgG promote
612 inflammation by alveolar macrophages. *Sci Transl Med*. 2021 Jun
613 2;13(596).33979301
- 614 6. Horby P, Lim WS, Emberson JR, Mafham M, Bell JL, Linsell L, et al.
615 Dexamethasone in Hospitalized Patients with Covid-19. *N Engl J Med*. 2021 Feb
616 25;384(8):693-704.32678530
- 617 7. Gordon AC, Mouncey PR, Al-Beidh F, Rowan KM, Nichol AD, Arabi YM, et al.
618 Interleukin-6 Receptor Antagonists in Critically Ill Patients with Covid-19. *N Engl J*
619 *Med*. 2021 Apr 22;384(16):1491-502.33631065
- 620 8. Horby PW, Emberson JR, Mafham M, Campbell M, Peto L, Pessoa-Amorim
621 G, et al. Baricitinib in patients admitted to hospital with COVID-19 (RECOVERY): a
622 randomised, controlled, open-label, platform trial and updated meta-analysis. 2022.
- 623 9. Pereira MR, Mohan S, Cohen DJ, Husain SA, Dube GK, Ratner LE, et al.
624 COVID-19 in solid organ transplant recipients: Initial report from the US epicenter.
625 *American Journal of Transplantation*. 2020;20(7):1800-8
- 626 10. Azzi Y, Parides M, Alani O, Loarte-Campos P, Bartash R, Forest S, et al.
627 COVID-19 infection in kidney transplant recipients at the epicenter of pandemics.
628 *Kidney International*. 2020;98(6):1559-67
- 629 11. Caillard S, Chavarot N, Francois H, Matignon M, Greze C, Kamar N, et al. Is
630 COVID-19 infection more severe in kidney transplant recipients? *American Journal*
631 *of Transplantation*. 2021;21(3):1295-303
- 632 12. Fisher AM, Schlauch D, Mulloy M, Dao A, Reyad AI, Correll M, et al.
633 Outcomes of COVID-19 in hospitalized solid organ transplant recipients compared to
634 a matched cohort of non-transplant patients at a national healthcare system in the
635 United States. *Clinical Transplantation*. 2021;35(4)
- 636 13. Andersen KM, Mehta HB, Palamuttam N, Ford D, Garibaldi BT, Auwaerter
637 PG, et al. Association Between Chronic Use of Immunosuppressive Drugs and
638 Clinical Outcomes From Coronavirus Disease 2019 (COVID-19) Hospitalization: A
639 Retrospective Cohort Study in a Large US Health System. *Clinical Infectious*
640 *Diseases*. 2021;73(11):e4124-e30
- 641 14. Gatti M, Rinaldi M, Bussini L, Bonazzetti C, Pascale R, Pasquini Z, et al.
642 Clinical outcome in solid organ transplant recipients affected by COVID-19 compared

- 643 to general population: a systematic review and meta-analysis. *Clin Microbiol Infect.*
644 2022 Mar 12.35289294
- 645 15. Ozturk S, Turgutalp K, Arici M, Odabas AR, Altiparmak MR, Aydin Z, et al.
646 Mortality analysis of COVID-19 infection in chronic kidney disease, haemodialysis
647 and renal transplant patients compared with patients without kidney disease: a
648 nationwide analysis from Turkey. *Nephrology Dialysis Transplantation.*
649 2020;35(12):2083-95
- 650 16. Williamson EJ, Walker AJ, Bhaskaran K, Bacon S, Bates C, Morton CE, et al.
651 Factors associated with COVID-19-related death using OpenSAFELY. *Nature.*
652 2020;584(7821):430-6
- 653 17. Ryan L. Vaccinated but Not Protected—Living Immunocompromised During
654 the Pandemic. *JAMA.* 2021;325(24):2443
- 655 18. Knight SR, Ho A, Pius R, Buchan I, Carson G, Drake TM, et al. Risk
656 stratification of patients admitted to hospital with covid-19 using the ISARIC WHO
657 Clinical Characterisation Protocol: development and validation of the 4C Mortality
658 Score. *BMJ.* 2020 Sep 9;370:m3339.32907855
- 659 19. Hall VJ, Foulkes S, Saei A, Andrews N, Oguti B, Charlett A, et al. COVID-19
660 vaccine coverage in health-care workers in England and effectiveness of BNT162b2
661 mRNA vaccine against infection (SIREN): a prospective, multicentre, cohort study.
662 *The Lancet.* 2021;397(10286):1725-35
- 663 20. Paton RS, Overton CE, Ward T. The rapid replacement of the Delta variant by
664 Omicron (B.1.1.529) in England. *Sci Transl Med.* 2022 May 3:eabo5395.35503007
- 665 21. Docherty AB, Mulholland RH, Lone NI, Cheyne CP, De Angelis D, Diaz-Ordaz
666 K, et al. Changes in in-hospital mortality in the first wave of COVID-19: a multicentre
667 prospective observational cohort study using the WHO Clinical Characterisation
668 Protocol UK. *Lancet Respir Med.* 2021 Jul;9(7):773-85.34000238
- 669 22. Andersen KM, Bates BA, Rashidi ES, Olex AL, Mannon RB, Patel RC, et al.
670 Long-term use of immunosuppressive medicines and in-hospital COVID-19
671 outcomes: a retrospective cohort study using data from the National COVID Cohort
672 Collaborative. *The Lancet Rheumatology.* 2022;4(1):e33-e41
- 673 23. Egan C, Turtle L, Thorpe M, Harrison EM, Semple MG, Docherty AB. Hospital
674 admission for symptomatic COVID-19 and impact of vaccination: analysis of linked
675 data from the Coronavirus Clinical Information Network and the National
676 Immunisation Management Service. *Anaesthesia.* 2022 Feb 18.35178709
- 677 24. Hart WS, Miller E, Andrews NJ, Waight P, Maini PK, Funk S, et al. Generation
678 time of the alpha and delta SARS-CoV-2 variants: an epidemiological analysis. *The*
679 *Lancet Infectious Diseases.* 2022
- 680 25. Campbell F, Archer B, Laurenson-Schafer H, Jinnai Y, Konings F, Batra N, et
681 al. Increased transmissibility and global spread of SARS-CoV-2 variants of concern
682 as at June 2021. *Eurosurveillance.* 2021;26(24)
- 683 26. Harvey WT, Carabelli AM, Jackson B, Gupta RK, Thomson EC, Harrison EM,
684 et al. SARS-CoV-2 variants, spike mutations and immune escape. *Nature Reviews*
685 *Microbiology.* 2021;19(7):409-24
- 686 27. Jayk Bernal A, Gomes Da Silva MM, Musungaie DB, Kovalchuk E, Gonzalez
687 A, Delos Reyes V, et al. Molnupiravir for Oral Treatment of Covid-19 in
688 Nonhospitalized Patients. *New England Journal of Medicine.* 2022;386(6):509-20
- 689 28. Gottlieb RL, Vaca CE, Paredes R, Mera J, Webb BJ, Perez G, et al. Early
690 Remdesivir to Prevent Progression to Severe Covid-19 in Outpatients. *New England*
691 *Journal of Medicine.* 2022;386(4):305-15

- 692 29. Lee ARYB, Wong SY, Chai LYA, Lee SC, Lee MX, Muthiah MD, et al. Efficacy
693 of covid-19 vaccines in immunocompromised patients: systematic review and meta-
694 analysis. *BMJ*. 2022:e068632
- 695 30. Takashita E, Yamayoshi S, Simon V, Van Bakel H, Sordillo EM, Pekosz A, et
696 al. Efficacy of Antibodies and Antiviral Drugs against Omicron BA.2.12.1, BA.4, and
697 BA.5 Subvariants. *New England Journal of Medicine*. 2022; Epub ahead of print.
698 [10.1056/nejmc2207519](https://doi.org/10.1056/nejmc2207519)
699

Tables and figures

Table 1. Demographics and comorbidities for immunocompetent and immunocompromised patients in the ISARIC WHO CCP-UK study. The immunocompromised patients are presented as both the, incorporating all conditions leading to immunocompromise, and by each group defined on the case record form.

label	Total N	Missing N	levels	Immunocompetent	Immunocompromised – Total	Immunocompromised - Pre-Existing Immunological Disorder	Immunocompromised - Previous Organ Transplant	Immunocompromised - Cancer	Immunocompromised - HIV	Immunocompromised - Pre-Admission Immunosuppressants	Immunocompromised - Pre-Admission Steroids
Total N (%)				134598 (86.0)	21954 (14.0)	526 (0.3)	1559 (1.0)	5116 (3.3)	498 (0.3)	12701 (8.1)	1554 (1.0)
Age on admission (years)	156538 (100.0)	14	Median (IQR)	69.5 (53.4 to 82.0)	71.5 (58.7 to 80.3)	61.8 (45.3 to 77.2)	62.4 (52.1 to 72.0)	72.0 (62.0 to 79.7)	57.8 (49.8 to 70.5)	72.5 (59.1 to 81.2)	75.1 (63.0 to 83.6)
			<50	27624 (20.5)	2801 (12.8)	150 (28.5)	337 (21.6)	400 (7.8)	127 (25.5)	1618 (12.7)	169 (10.9)
			50-69	40578 (30.1)	7387 (33.6)	172 (32.7)	761 (48.8)	1814 (35.5)	243 (48.8)	3985 (31.4)	412 (26.5)
			70-79	26902 (20.0)	6113 (27.8)	122 (23.2)	297 (19.1)	1654 (32.3)	64 (12.9)	3559 (28.0)	417 (26.8)
			80+	39482 (29.3)	5651 (25.7)	82 (15.6)	164 (10.5)	1248 (24.4)	64 (12.9)	3537 (27.8)	556 (35.8)
			(Missing)	12 (0.0)	2 (0.0)	0 (0.0)	0 (0.0)	0 (0.0)	0 (0.0)	2 (0.0)	0 (0.0)
Sex at Birth	156514 (100.0)	38	Male	74429 (55.3)	11564 (52.7)	268 (51.0)	964 (61.8)	2972 (58.1)	283 (56.8)	6228 (49.0)	849 (54.6)
			Female	60001 (44.6)	10353 (47.2)	258 (49.0)	593 (38.0)	2133 (41.7)	214 (43.0)	6452 (50.8)	703 (45.2)
			Not specified	136 (0.1)	31 (0.1)	0 (0.0)	1 (0.1)	10 (0.2)	1 (0.2)	18 (0.1)	1 (0.1)
			(Missing)	32 (0.0)	6 (0.0)	0 (0.0)	1 (0.1)	1 (0.0)	0 (0.0)	3 (0.0)	1 (0.1)
Ethnicity	136128 (87.0)	20424	White	95260 (70.8)	16578 (75.5)	308 (58.6)	1018 (65.3)	4078 (79.7)	230 (46.2)	9742 (76.7)	1202 (77.3)
			South Asian	7978 (5.9)	1023 (4.7)	26 (4.9)	169 (10.8)	139 (2.7)	23 (4.6)	603 (4.7)	63 (4.1)
			Black	3998 (3.0)	603 (2.7)	95 (18.1)	73 (4.7)	95 (1.9)	118 (23.7)	194 (1.5)	28 (1.8)
			East Asian	730 (0.5)	83 (0.4)	3 (0.6)	13 (0.8)	16 (0.3)	2 (0.4)	40 (0.3)	9 (0.6)
			Other	8679 (6.4)	1196 (5.4)	39 (7.4)	125 (8.0)	261 (5.1)	54 (10.8)	630 (5.0)	87 (5.6)
			(Missing)	17953 (13.3)	2471 (11.3)	55 (10.5)	161 (10.3)	527 (10.3)	71 (14.3)	1492 (11.7)	165 (10.6)
Number of comorbidities	156552 (100.0)	0	0	24608 (18.3)	0 (0.0)	0 (0.0)	0 (0.0)	0 (0.0)	0 (0.0)	0 (0.0)	0 (0.0)
			1	27784 (20.6)	1153 (5.3)	37 (7.0)	66 (4.2)	194 (3.8)	1 (0.2)	709 (5.6)	146 (9.4)
			2+	82206 (61.1)	20801 (94.7)	489 (93.0)	1493 (95.8)	4922 (96.2)	497 (99.8)	11992 (94.4)	1408 (90.6)
Chronic Cardiac Disease	141945 (90.7)	14607	No	85390 (63.4)	14351 (65.4)	372 (70.7)	1054 (67.6)	3580 (70.0)	365 (73.3)	8018 (63.1)	962 (61.9)

label	Total N	Missing N	levels	Immunocompetent	Immunocompromised – Total	Immunocompromised - Pre-Existing Immunological Disorder	Immunocompromised - Previous Organ Transplant	Immunocompromised - Cancer	Immunocompromised - HIV	Immunocompromised - Pre-Admission Immunosuppressants	Immunocompromised - Pre-Admission Steroids
			Yes	35597 (26.4)	6607 (30.1)	130 (24.7)	439 (28.2)	1318 (25.8)	107 (21.5)	4124 (32.5)	489 (31.5)
			(Missing)	13611 (10.1)	996 (4.5)	24 (4.6)	66 (4.2)	218 (4.3)	26 (5.2)	559 (4.4)	103 (6.6)
Hypertension	142801 (91.2)	13751	No	64695 (48.1)	11231 (51.2)	295 (56.1)	618 (39.6)	2870 (56.1)	265 (53.2)	6389 (50.3)	794 (51.1)
			Yes	57117 (42.4)	9758 (44.4)	206 (39.2)	893 (57.3)	2049 (40.1)	213 (42.8)	5731 (45.1)	666 (42.9)
			(Missing)	12786 (9.5)	965 (4.4)	25 (4.8)	48 (3.1)	197 (3.9)	20 (4.0)	581 (4.6)	94 (6.0)
Chronic Pulmonary Disease	141948 (90.7)	14604	No	102408 (76.1)	14855 (67.7)	387 (73.6)	1267 (81.3)	3969 (77.6)	418 (83.9)	7826 (61.6)	988 (63.6)
			Yes	18495 (13.7)	6190 (28.2)	122 (23.2)	229 (14.7)	946 (18.5)	59 (11.8)	4362 (34.3)	472 (30.4)
			(Missing)	13695 (10.2)	909 (4.1)	17 (3.2)	63 (4.0)	201 (3.9)	21 (4.2)	513 (4.0)	94 (6.0)
Chronic Renal Disease	141492 (90.4)	15060	No	101697 (75.6)	16628 (75.7)	418 (79.5)	639 (41.0)	4095 (80.0)	393 (78.9)	9884 (77.8)	1199 (77.2)
			Yes	18901 (14.0)	4266 (19.4)	88 (16.7)	865 (55.5)	790 (15.4)	79 (15.9)	2190 (17.2)	254 (16.3)
			(Missing)	14000 (10.4)	1060 (4.8)	20 (3.8)	55 (3.5)	231 (4.5)	26 (5.2)	627 (4.9)	101 (6.5)
Asthma	141767 (90.6)	14785	No	103088 (76.6)	16476 (75.0)	424 (80.6)	1342 (86.1)	4388 (85.8)	403 (80.9)	8780 (69.1)	1139 (73.3)
			Yes	17720 (13.2)	4483 (20.4)	81 (15.4)	158 (10.1)	511 (10.0)	73 (14.7)	3348 (26.4)	312 (20.1)
			(Missing)	13790 (10.2)	995 (4.5)	21 (4.0)	59 (3.8)	217 (4.2)	22 (4.4)	573 (4.5)	103 (6.6)
Liver Disease	140634 (89.8)	15918	No	116080 (86.2)	19849 (90.4)	471 (89.5)	1363 (87.4)	4625 (90.4)	434 (87.1)	11566 (91.1)	1390 (89.4)
			Yes	3800 (2.8)	905 (4.1)	29 (5.5)	121 (7.8)	229 (4.5)	37 (7.4)	436 (3.4)	53 (3.4)
			(Missing)	14718 (10.9)	1200 (5.5)	26 (4.9)	75 (4.8)	262 (5.1)	27 (5.4)	699 (5.5)	111 (7.1)
Chronic Neurological Disorder	141119 (90.1)	15433	No	106340 (79.0)	18677 (85.1)	423 (80.4)	1365 (87.6)	4479 (87.5)	418 (83.9)	10750 (84.6)	1242 (79.9)
			Yes	13957 (10.4)	2145 (9.8)	79 (15.0)	125 (8.0)	385 (7.5)	56 (11.2)	1306 (10.3)	194 (12.5)
			(Missing)	14301 (10.6)	1132 (5.2)	24 (4.6)	69 (4.4)	252 (4.9)	24 (4.8)	645 (5.1)	118 (7.6)
Malignant Neoplasm	140939 (90.0)	15613	No	111603 (82.9)	15739 (71.7)	451 (85.7)	1276 (81.8)	1509 (29.5)	439 (88.2)	10792 (85.0)	1272 (81.9)
			Yes	8484 (6.3)	5113 (23.3)	45 (8.6)	209 (13.4)	3440 (67.2)	33 (6.6)	1236 (9.7)	150 (9.7)
			(Missing)	14511 (10.8)	1102 (5.0)	30 (5.7)	74 (4.7)	167 (3.3)	26 (5.2)	673 (5.3)	132 (8.5)
Chronic Haematologic Disease	140895 (90.0)	15657	No	116431 (86.5)	18758 (85.4)	351 (66.7)	1389 (89.1)	3742 (73.1)	442 (88.8)	11458 (90.2)	1376 (88.5)

label	Total N	Missing N	levels	Immunocompetent	Immunocompromised – Total	Immunocompromised - Pre-Existing Immunological Disorder	Immunocompromised - Previous Organ Transplant	Immunocompromised - Cancer	Immunocompromised - HIV	Immunocompromised - Pre-Admission Immunosuppressants	Immunocompromised - Pre-Admission Steroids
			Yes	3665 (2.7)	2041 (9.3)	150 (28.5)	102 (6.5)	1132 (22.1)	32 (6.4)	574 (4.5)	51 (3.3)
			(Missing)	14502 (10.8)	1155 (5.3)	25 (4.8)	68 (4.4)	242 (4.7)	24 (4.8)	669 (5.3)	127 (8.2)
Obesity	125264 (80.0)	31288	No	89557 (66.5)	15300 (69.7)	367 (69.8)	1120 (71.8)	3841 (75.1)	337 (67.7)	8543 (67.3)	1092 (70.3)
			Yes	17462 (13.0)	2945 (13.4)	69 (13.1)	185 (11.9)	466 (9.1)	80 (16.1)	2006 (15.8)	139 (8.9)
			(Missing)	27579 (20.5)	3709 (16.9)	90 (17.1)	254 (16.3)	809 (15.8)	81 (16.3)	2152 (16.9)	323 (20.8)
Diabetes	143343 (91.6)	13209	No	85844 (63.8)	15135 (68.9)	358 (68.1)	950 (60.9)	3766 (73.6)	324 (65.1)	8706 (68.5)	1031 (66.3)
			Yes	36322 (27.0)	6042 (27.5)	153 (29.1)	563 (36.1)	1188 (23.2)	162 (32.5)	3537 (27.8)	439 (28.2)
			(Missing)	12432 (9.2)	777 (3.5)	15 (2.9)	46 (3.0)	162 (3.2)	12 (2.4)	458 (3.6)	84 (5.4)
Rheumatologic Disorder	140476 (89.7)	16076	No	106762 (79.3)	16273 (74.1)	411 (78.1)	1339 (85.9)	4310 (84.2)	438 (88.0)	8586 (67.6)	1189 (76.5)
			Yes	12901 (9.6)	4540 (20.7)	82 (15.6)	138 (8.9)	559 (10.9)	33 (6.6)	3491 (27.5)	237 (15.3)
			(Missing)	14935 (11.1)	1141 (5.2)	33 (6.3)	82 (5.3)	247 (4.8)	27 (5.4)	624 (4.9)	128 (8.2)
Dementia	140670 (89.9)	15882	No	104563 (77.7)	19205 (87.5)	458 (87.1)	1432 (91.9)	4583 (89.6)	439 (88.2)	11047 (87.0)	1246 (80.2)
			Yes	15328 (11.4)	1574 (7.2)	41 (7.8)	53 (3.4)	286 (5.6)	29 (5.8)	974 (7.7)	191 (12.3)
			(Missing)	14707 (10.9)	1175 (5.4)	27 (5.1)	74 (4.7)	247 (4.8)	30 (6.0)	680 (5.4)	117 (7.5)
Malnutrition	131191 (83.8)	25361	No	109531 (81.4)	18749 (85.4)	443 (84.2)	1353 (86.8)	4346 (84.9)	425 (85.3)	10888 (85.7)	1294 (83.3)
			Yes	2417 (1.8)	494 (2.3)	11 (2.1)	34 (2.2)	160 (3.1)	15 (3.0)	249 (2.0)	25 (1.6)
			(Missing)	22650 (16.8)	2711 (12.3)	72 (13.7)	172 (11.0)	610 (11.9)	58 (11.6)	1564 (12.3)	235 (15.1)
Smoking	81789 (52.2)	74763	No	35378 (26.3)	5587 (25.4)	165 (31.4)	447 (28.7)	1271 (24.8)	164 (32.9)	3214 (25.3)	326 (21.0)
			Yes	33798 (25.1)	7026 (32.0)	118 (22.4)	347 (22.3)	1621 (31.7)	109 (21.9)	4363 (34.4)	468 (30.1)
			(Missing)	65422 (48.6)	9341 (42.5)	243 (46.2)	765 (49.1)	2224 (43.5)	225 (45.2)	5124 (40.3)	760 (48.9)
Vaccination Dose on Admission	153293 (97.9)	3259	Unvaccinated	114364 (85.0)	17737 (80.8)	452 (85.9)	1078 (69.1)	4077 (79.7)	419 (84.1)	10267 (80.8)	1444 (92.9)
			First Dose	5112 (3.8)	789 (3.6)	6 (1.1)	60 (3.8)	166 (3.2)	17 (3.4)	516 (4.1)	24 (1.5)
			Second Dose	11601 (8.6)	2804 (12.8)	49 (9.3)	344 (22.1)	679 (13.3)	41 (8.2)	1631 (12.8)	60 (3.9)
			Third Dose	592 (0.4)	290 (1.3)	6 (1.1)	51 (3.3)	92 (1.8)	1 (0.2)	139 (1.1)	1 (0.1)
			Fourth Dose	2 (0.0)	2 (0.0)	0 (0.0)	0 (0.0)	2 (0.0)	0 (0.0)	0 (0.0)	0 (0.0)

label	Total N	Missing N	levels	Immunocompetent	Immunocompromised – Total	Immunocompromised - Pre-Existing Immunological Disorder	Immunocompromised - Previous Organ Transplant	Immunocompromised - Cancer	Immunocompromised - HIV	Immunocompromised - Pre-Admission Immunosuppressants	Immunocompromised - Pre-Admission Steroids
			(Missing)	2927 (2.2)	332 (1.5)	13 (2.5)	26 (1.7)	100 (2.0)	20 (4.0)	148 (1.2)	25 (1.6)

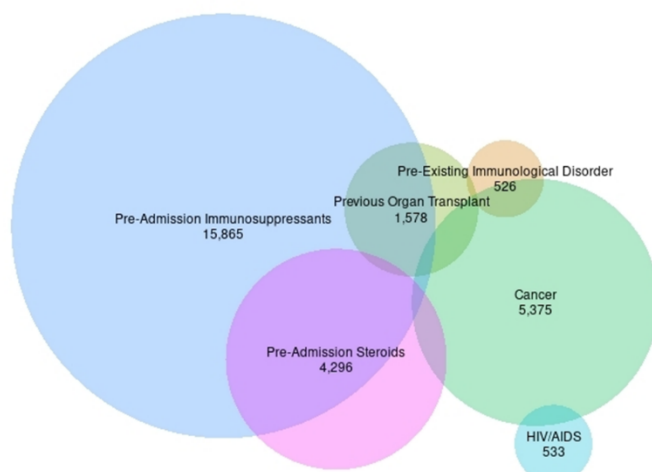
Table 2. Outcomes stratified by immune status and pandemic wave.

label	levels	Immunocompetent - Wave 1	Immunocompromised - Wave 1	Immunocompetent - Wave 2	Immunocompromised - Wave 2	Immunocompetent - Wave 3	Immunocompromised - Wave 3	Immunocompetent - Wave 4	Immunocompromised - Wave 4
Oxygen	No	10974 (31.2)	1910 (28.0)	16398 (25.7)	2227 (22.8)	7745 (29.0)	1029 (24.0)	3659 (51.6)	361 (40.1)
	Yes	24227 (68.8)	4918 (72.0)	47468 (74.3)	7549 (77.2)	18999 (71.0)	3258 (76.0)	3434 (48.4)	540 (59.9)
Critical Care Admission	No	30785 (86.9)	5952 (86.9)	52873 (82.5)	8101 (82.7)	22469 (83.9)	3514 (82.0)	6611 (92.4)	823 (90.8)
	Yes	4637 (13.1)	896 (13.1)	11223 (17.5)	1693 (17.3)	4306 (16.1)	773 (18.0)	544 (7.6)	83 (9.2)
Non-Invasive Ventilation	No	29970 (85.4)	5660 (83.2)	50363 (79.4)	7449 (76.8)	20925 (78.9)	3181 (74.7)	6362 (90.1)	762 (84.9)
	Yes	5106 (14.6)	1145 (16.8)	13035 (20.6)	2252 (23.2)	5608 (21.1)	1078 (25.3)	696 (9.9)	136 (15.1)
Invasive Ventilation	No	32524 (92.4)	6384 (93.6)	59058 (93.0)	8973 (92.2)	25074 (94.7)	3948 (92.8)	6875 (97.6)	866 (96.7)
	Yes	2664 (7.6)	435 (6.4)	4416 (7.0)	754 (7.8)	1415 (5.3)	308 (7.2)	170 (2.4)	30 (3.3)
Death	No	24766 (70.2)	4379 (64.3)	48439 (77.4)	6551 (68.6)	23276 (87.9)	3317 (78.3)	5726 (88.7)	662 (81.2)
	Yes	10495 (29.8)	2430 (35.7)	14177 (22.6)	2998 (31.4)	3210 (12.1)	918 (21.7)	726 (11.3)	153 (18.8)

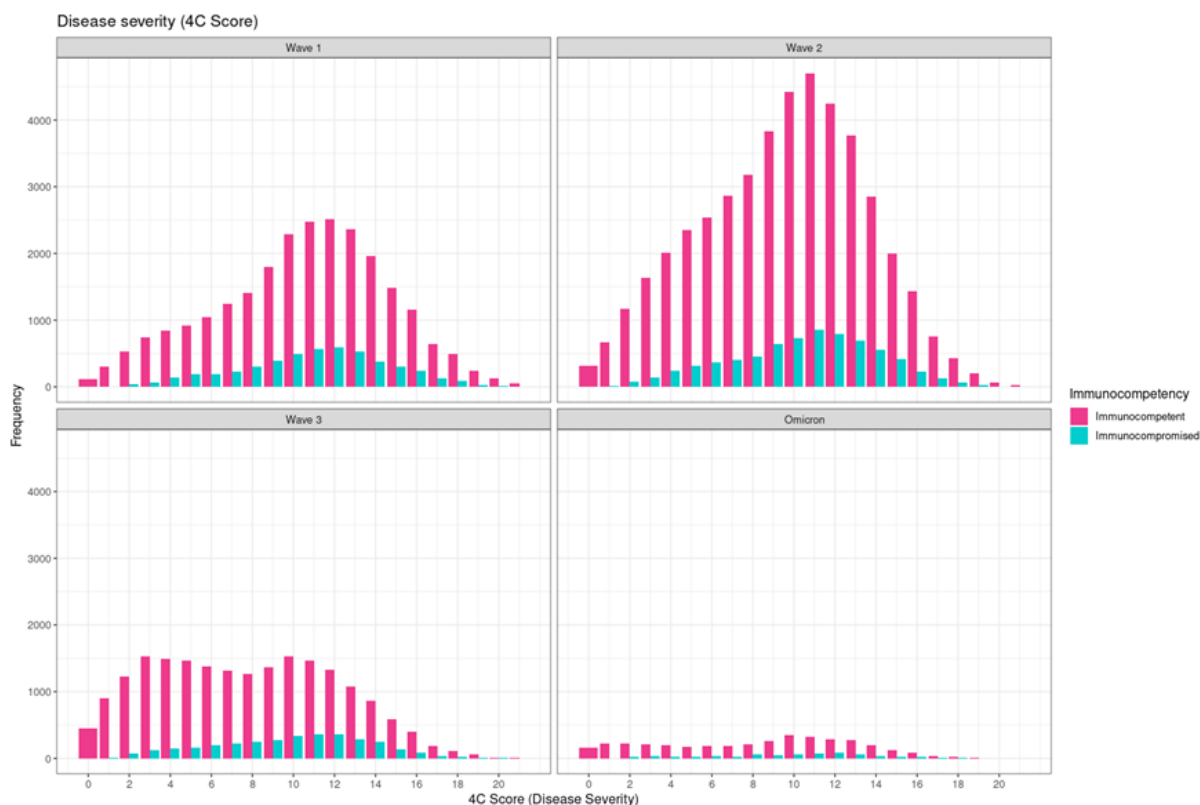
Figure 1. Illness severity and characteristics of the patients. (A) Illness severity over the course of the pandemic, measured using the 4C Mortality Score by immune status and pandemic wave. Pink bars: immunocompetent, green bars: immunocompromised. (B) Physiological components of the 4C Mortality Score stratified by immune status and pandemic wave. (C) Overlap between immunocompromising conditions

A

Immunocompromise Overlap



B



C

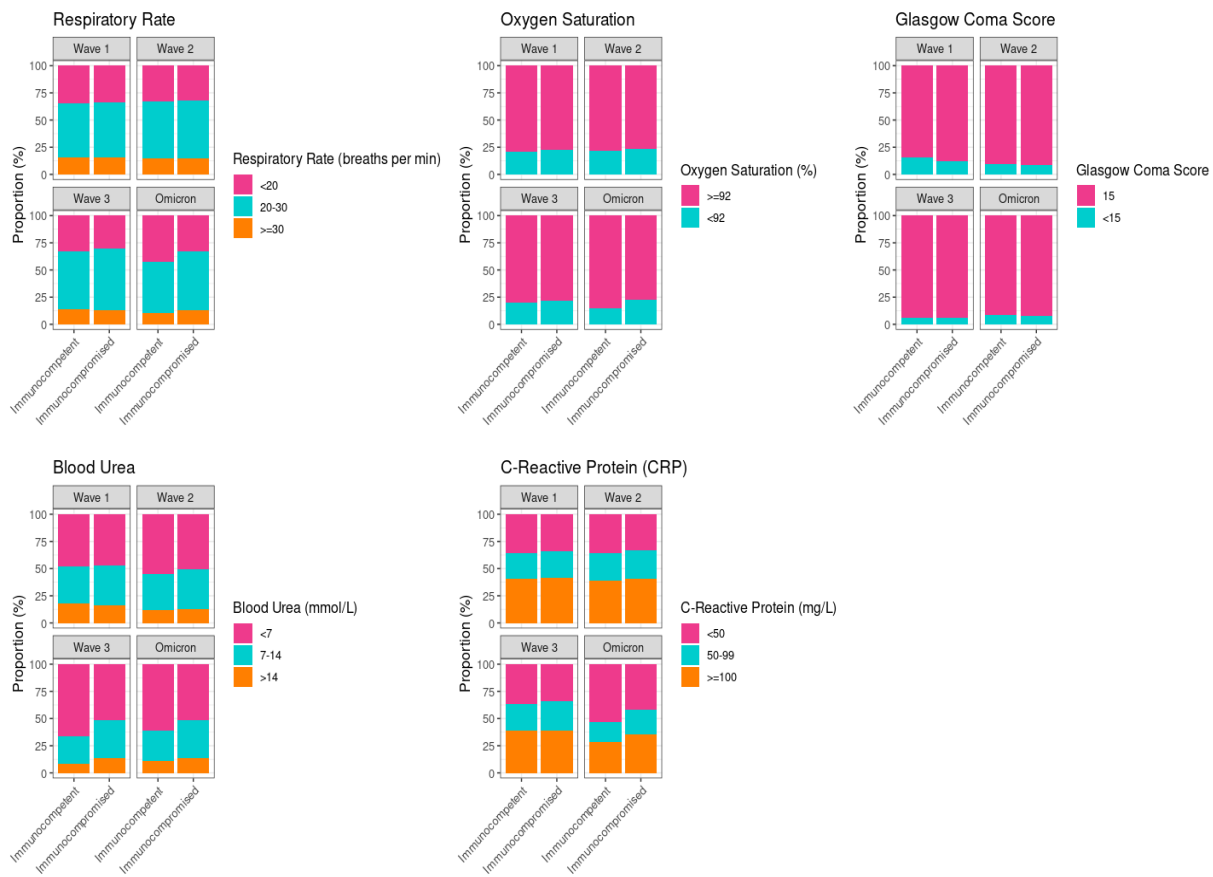
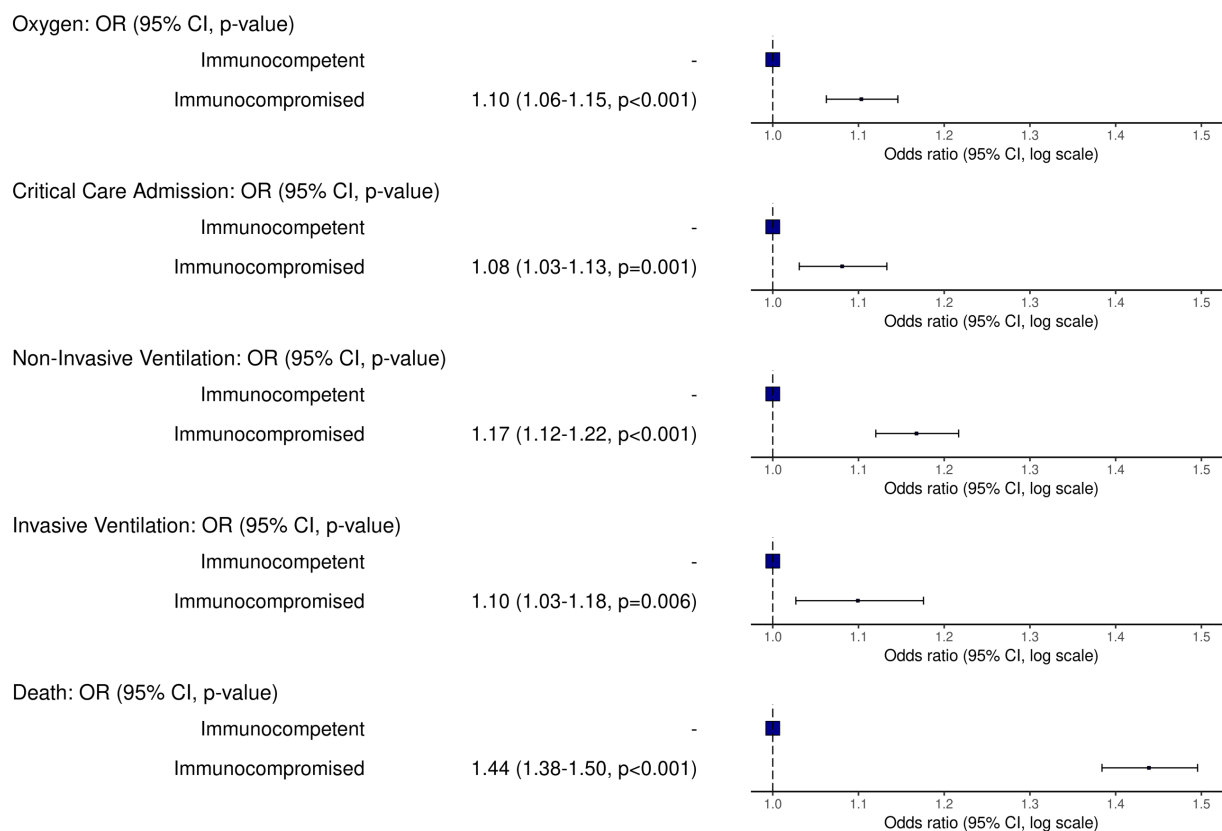


Figure 2. Outcomes of hospitalised immunocompromised patients, compared with immunocompetent patients. Odds ratios (ORs) from multivariable logistic regression and 95% confidence intervals (CI) for (A) outcomes of death, oxygen use, critical care admission, non-invasive and invasive ventilation, and (B) for death in the first 4 pandemic waves in the UK. ORs are adjusted for age, sex, ethnicity, deprivation, and comorbidities.

A



B

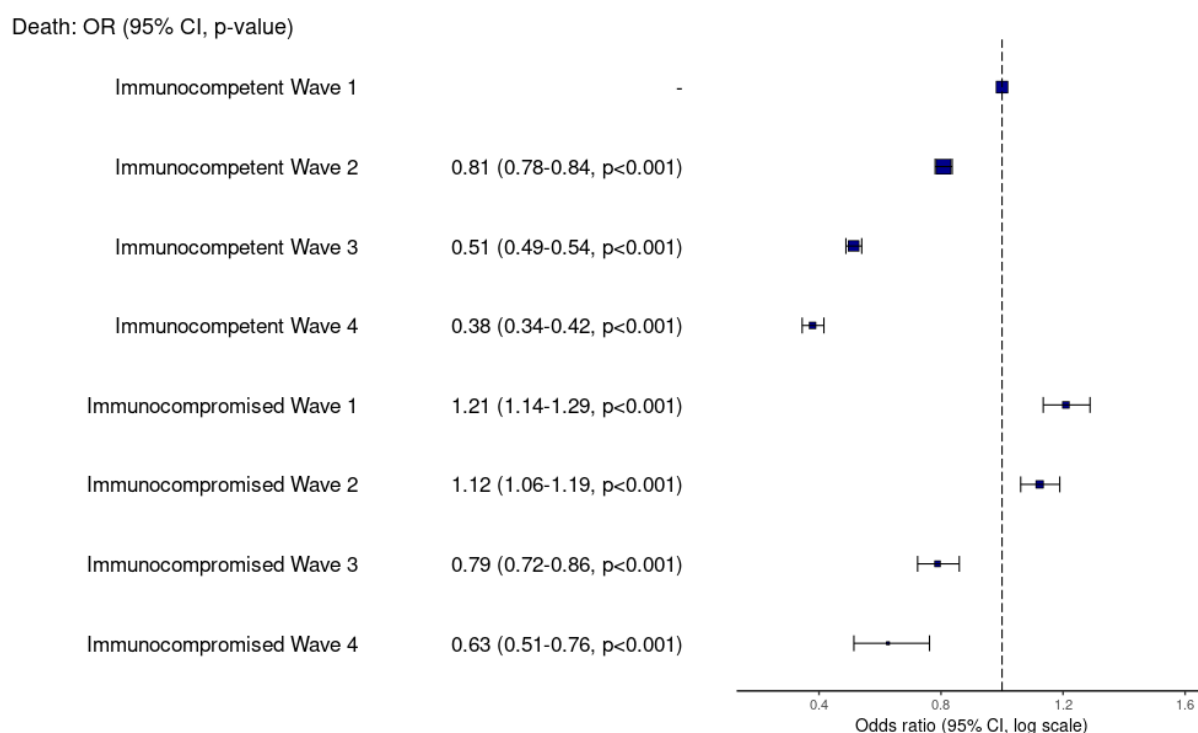
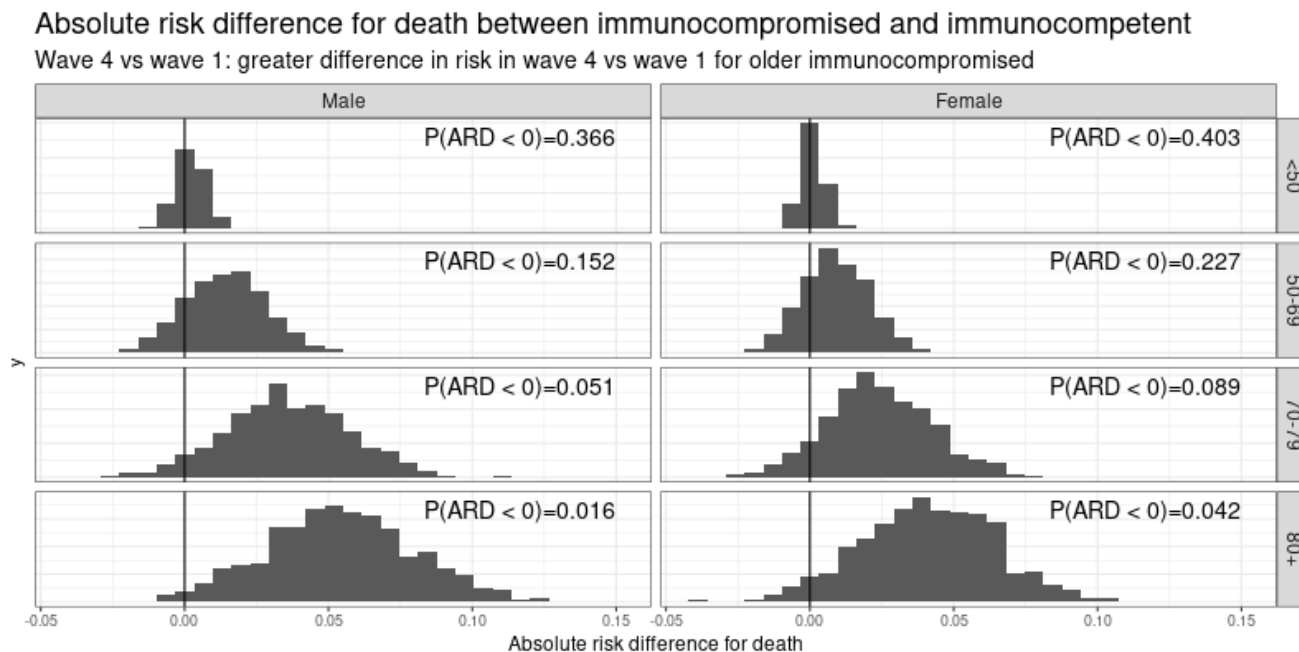


Figure 3: Absolute risk difference (ARD) for death between immunocompromised and immunocompetent. The difference in risk of death in the first wave, and the fourth wave, for immunocompetent and immunocompromised patients was modelled using Bayesian logistic regression, and the probability that the risk of death across the two waves reduced more in the immunocompetent than the immunocompromised was calculated. The analysis was stratified by age and sex.



Supplementary data

Table S1. Comorbidities in immunocompetent versus immunocompromised patients stratified by pandemic wave.

label	levels	Immunocompetent - Wave 1	Immunocompromised - Wave 1	Immunocompetent - Wave 2	Immunocompromised - Wave 2	Immunocompetent - Wave 3	Immunocompromised - Wave 3	Immunocompetent - Wave 4	Immunocompromised - Wave 4
Age on admission (years)	Median (IQR)	75.3 (59.7 to 84.9)	74.1 (62.0 to 82.5)	70.2 (55.6 to 81.9)	71.3 (59.0 to 80.1)	58.7 (42.2 to 75.2)	66.9 (53.9 to 76.6)	66.8 (45.5 to 81.5)	69.2 (56.2 to 78.6)
	<50	4716 (13.3)	641 (9.3)	10867 (16.8)	1209 (12.3)	9867 (36.4)	806 (18.6)	2174 (29.4)	145 (15.7)
	50-69	9402 (26.5)	2010 (29.3)	21188 (32.8)	3389 (34.4)	8129 (30.0)	1658 (38.3)	1859 (25.2)	330 (35.8)
	70-79	7472 (21.0)	1977 (28.8)	13751 (21.3)	2764 (28.1)	4381 (16.2)	1110 (25.7)	1298 (17.6)	262 (28.4)
	80+	13931 (39.2)	2230 (32.5)	18755 (29.1)	2485 (25.2)	4738 (17.5)	751 (17.4)	2058 (27.9)	185 (20.1)
Sex at Birth	Male	19501 (54.9)	3684 (53.7)	36124 (56.0)	5196 (52.8)	15137 (55.8)	2234 (51.7)	3667 (49.6)	450 (48.8)
	Female	15976 (45.0)	3163 (46.1)	28371 (43.9)	4636 (47.1)	11948 (44.1)	2083 (48.2)	3706 (50.2)	471 (51.1)
	Not specified	41 (0.1)	8 (0.1)	60 (0.1)	15 (0.2)	22 (0.1)	7 (0.2)	13 (0.2)	1 (0.1)
Ethnicity	White	25322 (82.0)	5207 (85.0)	46492 (82.5)	7399 (85.0)	18501 (79.8)	3262 (85.0)	4945 (79.7)	710 (86.8)
	South Asian	1856 (6.0)	300 (4.9)	4094 (7.3)	490 (5.6)	1610 (6.9)	201 (5.2)	418 (6.7)	32 (3.9)
	Black	1159 (3.8)	220 (3.6)	1542 (2.7)	229 (2.6)	999 (4.3)	127 (3.3)	298 (4.8)	27 (3.3)
	East Asian	243 (0.8)	30 (0.5)	307 (0.5)	38 (0.4)	158 (0.7)	14 (0.4)	22 (0.4)	1 (0.1)
	Other	2313 (7.5)	368 (6.0)	3920 (7.0)	547 (6.3)	1924 (8.3)	233 (6.1)	522 (8.4)	48 (5.9)
Number of comorbidities	0	4378 (12.3)	0 (0.0)	10230 (15.8)	0 (0.0)	8238 (30.4)	0 (0.0)	1762 (23.8)	0 (0.0)
	1	6868 (19.3)	285 (4.2)	13649 (21.1)	489 (5.0)	5809 (21.4)	335 (7.7)	1458 (19.7)	44 (4.8)
	2+	24279 (68.3)	6573 (95.8)	40688 (63.0)	9359 (95.0)	13070 (48.2)	3991 (92.3)	4169 (56.4)	878 (95.2)
Chronic Cardiac Disease	No	22615 (66.7)	4261 (64.8)	43530 (71.4)	6571 (69.2)	15241 (75.5)	2924 (72.8)	4004 (68.1)	595 (68.0)
	Yes	11298 (33.3)	2315 (35.2)	17470 (28.6)	2918 (30.8)	4955 (24.5)	1094 (27.2)	1874 (31.9)	280 (32.0)
Hypertension	No	17156 (50.4)	3495 (53.1)	32532 (52.9)	5060 (53.2)	11717 (57.5)	2176 (54.1)	3290 (55.7)	500 (57.3)
	Yes	16889 (49.6)	3083 (46.9)	28933 (47.1)	4456 (46.8)	8674 (42.5)	1846 (45.9)	2621 (44.3)	373 (42.7)
Chronic Pulmonary Disease	No	28521 (84.6)	4602 (69.9)	52034 (85.3)	6752 (70.8)	17117 (84.5)	2920 (72.3)	4736 (80.2)	581 (65.6)
	Yes	5189 (15.4)	1983 (30.1)	8999 (14.7)	2784 (29.2)	3138 (15.5)	1118 (27.7)	1169 (19.8)	305 (34.4)
Chronic Renal Disease	No	27710 (82.3)	5149 (78.8)	51719 (85.0)	7677 (81.1)	17395 (86.2)	3132 (78.0)	4873 (82.7)	670 (76.4)
	Yes	5961 (17.7)	1386 (21.2)	9136 (15.0)	1791 (18.9)	2784 (13.8)	882 (22.0)	1020 (17.3)	207 (23.6)
Asthma	No	29546 (87.7)	5269 (80.7)	52021 (85.4)	7369 (77.5)	16569 (81.7)	3138 (77.6)	4952 (84.0)	700 (79.5)
	Yes	4150 (12.3)	1257 (19.3)	8922 (14.6)	2140 (22.5)	3705 (18.3)	905 (22.4)	943 (16.0)	181 (20.5)
Liver Disease	No	32281 (96.7)	6204 (95.8)	58724 (96.9)	8987 (95.5)	19463 (96.8)	3833 (95.8)	5612 (96.6)	825 (95.3)
	Yes	1112 (3.3)	274 (4.2)	1856 (3.1)	422 (4.5)	635 (3.2)	168 (4.2)	197 (3.4)	41 (4.7)

label	levels	Immunocompetent - Wave 1	Immunocompromised - Wave 1	Immunocompetent - Wave 2	Immunocompromised - Wave 2	Immunocompetent - Wave 3	Immunocompromised - Wave 3	Immunocompetent - Wave 4	Immunocompromised - Wave 4
Chronic Neurological Disorder	No	28925 (86.2)	5729 (88.1)	54021 (89.0)	8478 (89.9)	18345 (90.9)	3691 (92.0)	5049 (86.4)	779 (89.1)
	Yes	4640 (13.8)	776 (11.9)	6678 (11.0)	953 (10.1)	1844 (9.1)	321 (8.0)	795 (13.6)	95 (10.9)
Malignant Neoplasm	No	31019 (92.8)	4857 (74.6)	56420 (93.0)	7206 (76.2)	18895 (93.8)	3048 (76.2)	5269 (90.5)	628 (71.4)
	Yes	2423 (7.2)	1656 (25.4)	4256 (7.0)	2252 (23.8)	1250 (6.2)	953 (23.8)	555 (9.5)	252 (28.6)
Chronic Haematologic Disease	No	32397 (96.9)	5796 (89.4)	58907 (97.1)	8596 (91.2)	19535 (96.9)	3600 (89.6)	5592 (95.9)	766 (87.8)
	Yes	1039 (3.1)	690 (10.6)	1761 (2.9)	829 (8.8)	623 (3.1)	416 (10.4)	242 (4.1)	106 (12.2)
Obesity	No	26042 (87.3)	5016 (87.5)	44460 (82.9)	6693 (81.8)	14327 (79.0)	2886 (82.0)	4728 (87.3)	705 (87.0)
	Yes	3793 (12.7)	717 (12.5)	9167 (17.1)	1489 (18.2)	3815 (21.0)	634 (18.0)	687 (12.7)	105 (13.0)
Diabetes	No	23631 (69.0)	4669 (70.3)	43534 (70.7)	6874 (71.7)	14424 (70.6)	2915 (71.8)	4255 (71.9)	677 (76.2)
	Yes	10602 (31.0)	1970 (29.7)	18061 (29.3)	2716 (28.3)	5995 (29.4)	1145 (28.2)	1664 (28.1)	211 (23.8)
Rheumatologic Disorder	No	29815 (89.5)	5105 (78.8)	53567 (88.7)	7351 (77.9)	18101 (90.1)	3116 (77.5)	5279 (90.3)	701 (79.8)
	Yes	3487 (10.5)	1374 (21.2)	6858 (11.3)	2084 (22.1)	1992 (9.9)	905 (22.5)	564 (9.7)	177 (20.2)
Dementia	No	26981 (80.4)	5772 (88.7)	53735 (89.0)	8762 (93.3)	18717 (93.1)	3834 (95.9)	5130 (87.9)	837 (94.9)
	Yes	6588 (19.6)	735 (11.3)	6651 (11.0)	629 (6.7)	1380 (6.9)	165 (4.1)	709 (12.1)	45 (5.1)
Malnutrition	No	30161 (97.0)	5841 (97.0)	55152 (97.9)	8391 (97.1)	18759 (98.8)	3696 (98.7)	5459 (98.3)	821 (98.0)
	Yes	929 (3.0)	181 (3.0)	1164 (2.1)	249 (2.9)	227 (1.2)	47 (1.3)	97 (1.7)	17 (2.0)
Smoking	No	9736 (52.1)	1741 (44.1)	18467 (52.5)	2578 (45.1)	5785 (47.8)	1082 (44.5)	1390 (43.2)	186 (35.6)
	Yes	8969 (47.9)	2206 (55.9)	16682 (47.5)	3132 (54.9)	6319 (52.2)	1352 (55.5)	1828 (56.8)	336 (64.4)
Vaccination Dose on Admission	Unvaccinated	34396 (100.0)	6688 (100.0)	59598 (94.9)	9143 (94.4)	13488 (49.7)	1058 (24.5)	6882 (93.1)	848 (92.0)
	First Dose	0 (0.0)	0 (0.0)	3116 (5.0)	532 (5.5)	1948 (7.2)	253 (5.8)	48 (0.6)	4 (0.4)
	Second Dose	0 (0.0)	0 (0.0)	55 (0.1)	11 (0.1)	11251 (41.5)	2762 (63.8)	295 (4.0)	31 (3.4)
	Third Dose	0 (0.0)	0 (0.0)	0 (0.0)	0 (0.0)	428 (1.6)	251 (5.8)	164 (2.2)	39 (4.2)
	Fourth Dose	0 (0.0)	0 (0.0)	0 (0.0)	0 (0.0)	2 (0.0)	2 (0.0)	0 (0.0)	0 (0.0)

Table S2. Disease severity by immune status and pandemic wave. The 4C mortality score is calculated on admission to hospital from age, sex, number of comorbidities, respiratory rate, oxygen saturation, Glasgow coma scale, urea and CRP. The score ranges from 0 (low risk) to 21 (very high risk). Score 0-3 = low risk (1.2% mortality), 4-8 = intermediate risk (9.9% mortality), 9-14 = high risk (31.4% mortality) and 15-21 = very high risk (61.5% mortality).

label	levels	Immunocompetent - Wave 1	Immunocompromised - Wave 1	Immunocompetent - Wave 2	Immunocompromised - Wave 2	Immunocompetent - Wave 3	Immunocompromised - Wave 3	Immunocompetent - Wave 4	Immunocompromised - Wave 4
ISARIC4C Mortality Score	Median (IQR)	11.0 (8.0 to 13.0)	11.0 (9.0 to 13.0)	10.0 (7.0 to 13.0)	11.0 (8.0 to 13.0)	8.0 (4.0 to 11.0)	10.0 (7.0 to 12.0)	9.0 (4.0 to 12.0)	10.0 (7.0 to 12.0)
Respiratory Rate (breaths per min)	<20	12159 (35.1)	2259 (33.6)	20832 (33.1)	3060 (31.6)	8563 (32.5)	1291 (30.3)	2453 (42.6)	283 (33.0)
	20-30	16963 (48.9)	3382 (50.4)	33071 (52.5)	5173 (53.5)	14210 (54.0)	2406 (56.5)	2726 (47.4)	463 (54.0)
	>=30	5558 (16.0)	1074 (16.0)	9102 (14.4)	1439 (14.9)	3545 (13.5)	564 (13.2)	578 (10.0)	112 (13.1)
Number of comorbidities	0	4378 (12.3)	0 (0.0)	10230 (15.8)	0 (0.0)	8238 (30.4)	0 (0.0)	1762 (23.8)	0 (0.0)
	1	6868 (19.3)	285 (4.2)	13649 (21.1)	489 (5.0)	5809 (21.4)	335 (7.7)	1458 (19.7)	44 (4.8)
	2+	24279 (68.3)	6573 (95.8)	40688 (63.0)	9359 (95.0)	13070 (48.2)	3991 (92.3)	4169 (56.4)	878 (95.2)
Oxygen Saturation (%)	>=92	27589 (79.2)	5254 (77.7)	49645 (78.6)	7421 (76.6)	21201 (80.0)	3323 (77.9)	4912 (84.9)	671 (77.7)
	<92	7244 (20.8)	1507 (22.3)	13495 (21.4)	2262 (23.4)	5288 (20.0)	942 (22.1)	875 (15.1)	193 (22.3)
Glasgow Coma Score	15	27882 (84.5)	5664 (88.2)	55467 (90.9)	8585 (91.8)	24134 (93.9)	3872 (94.0)	5403 (91.0)	771 (92.2)
	<15	5128 (15.5)	756 (11.8)	5534 (9.1)	767 (8.2)	1562 (6.1)	249 (6.0)	533 (9.0)	65 (7.8)
Blood Urea (mmol/L)	<7	13721 (48.4)	2633 (47.2)	28504 (54.9)	4109 (50.9)	14805 (66.2)	1877 (51.3)	3024 (61.3)	378 (51.5)
	7-14	9659 (34.0)	2027 (36.3)	17073 (32.9)	2927 (36.3)	5636 (25.2)	1291 (35.3)	1355 (27.5)	258 (35.1)
	>14	4998 (17.6)	919 (16.5)	6320 (12.2)	1032 (12.8)	1927 (8.6)	490 (13.4)	557 (11.3)	98 (13.4)
C-Reactive Protein (mg/L)	<50	10342 (35.9)	1932 (33.9)	18415 (35.5)	2658 (32.8)	8349 (36.8)	1261 (33.9)	2552 (52.8)	307 (42.1)
	50-99	6632 (23.0)	1400 (24.6)	13312 (25.7)	2160 (26.7)	5556 (24.5)	1005 (27.0)	892 (18.5)	167 (22.9)
	>=100	11824 (41.1)	2363 (41.5)	20110 (38.8)	3277 (40.5)	8757 (38.6)	1455 (39.1)	1385 (28.7)	256 (35.1)

Table S3. Number (%) of patients receiving steroids and tocilizumab by immune status and pandemic wave.

label	levels	Immunocompetent - Wave 1	Immunocompromised - Wave 1	Immunocompetent - Wave 2	Immunocompromised - Wave 2	Immunocompetent - Wave 3	Immunocompromised - Wave 3	Immunocompetent - Wave 4	Immunocompromised - Wave 4
Steroids	No	20192 (83.3)	2405 (48.9)	7721 (16.3)	824 (10.9)	2223 (11.7)	277 (8.5)	1246 (36.3)	101 (18.7)
	Yes	4035 (16.7)	2513 (51.1)	39747 (83.7)	6725 (89.1)	16776 (88.3)	2981 (91.5)	2188 (63.7)	439 (81.3)
Tocilizumab	No	12340 (99.5)	2482 (99.6)	21610 (93.7)	3529 (95.5)	7812 (80.4)	1422 (85.0)	1107 (86.7)	206 (88.8)
	Yes	59 (0.5)	11 (0.4)	1456 (6.3)	167 (4.5)	1900 (19.6)	251 (15.0)	170 (13.3)	26 (11.2)

Table S4. Outcomes by reason for immunocompromise.

label	levels	Immunocompetent	Pre-Existing Immunological Disorder	Previous Organ Transplant	Cancer	HIV/AIDS	Pre-Admission Immunosuppressants	Pre-Admission Steroids
Oxygen	No	38776 (29.2)	151 (29.2)	471 (30.6)	1555 (30.7)	142 (29.0)	2858 (22.6)	350 (22.7)
	Yes	94128 (70.8)	367 (70.8)	1070 (69.4)	3516 (69.3)	348 (71.0)	9769 (77.4)	1195 (77.3)
Critical Care Admission	No	112738 (84.5)	421 (81.1)	1209 (78.2)	4437 (87.3)	367 (74.1)	10637 (84.1)	1319 (85.2)
	Yes	20710 (15.5)	98 (18.9)	337 (21.8)	648 (12.7)	128 (25.9)	2005 (15.9)	229 (14.8)
Non-Invasive Ventilation	No	107620 (81.5)	416 (80.5)	1170 (76.2)	4127 (81.8)	369 (75.8)	9758 (77.7)	1212 (79.5)
	Yes	24445 (18.5)	101 (19.5)	365 (23.8)	918 (18.2)	118 (24.2)	2796 (22.3)	313 (20.5)
Invasive Ventilation	No	123531 (93.4)	471 (90.9)	1365 (88.9)	4820 (95.3)	428 (87.9)	11672 (92.9)	1415 (92.4)
	Yes	8665 (6.6)	47 (9.1)	171 (11.1)	236 (4.7)	59 (12.1)	898 (7.1)	116 (7.6)
Death	No	102207 (78.1)	391 (75.9)	1100 (72.8)	3168 (63.5)	396 (81.6)	8849 (71.4)	1005 (66.0)
	Yes	28608 (21.9)	124 (24.1)	411 (27.2)	1818 (36.5)	89 (18.4)	3540 (28.6)	517 (34.0)

Figure S1: Consort diagram

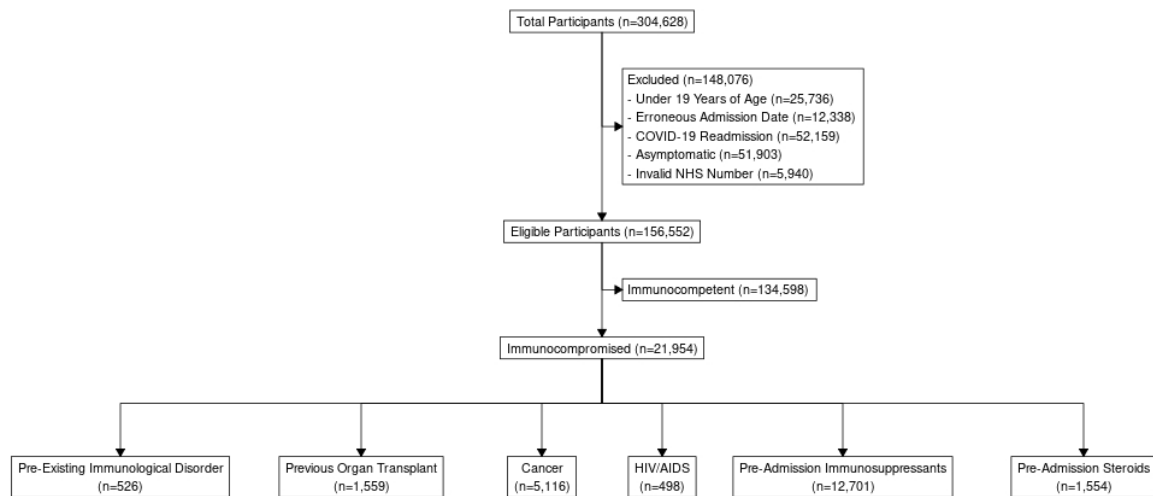


Figure S2. Admissions stratified by the number of vaccine doses received

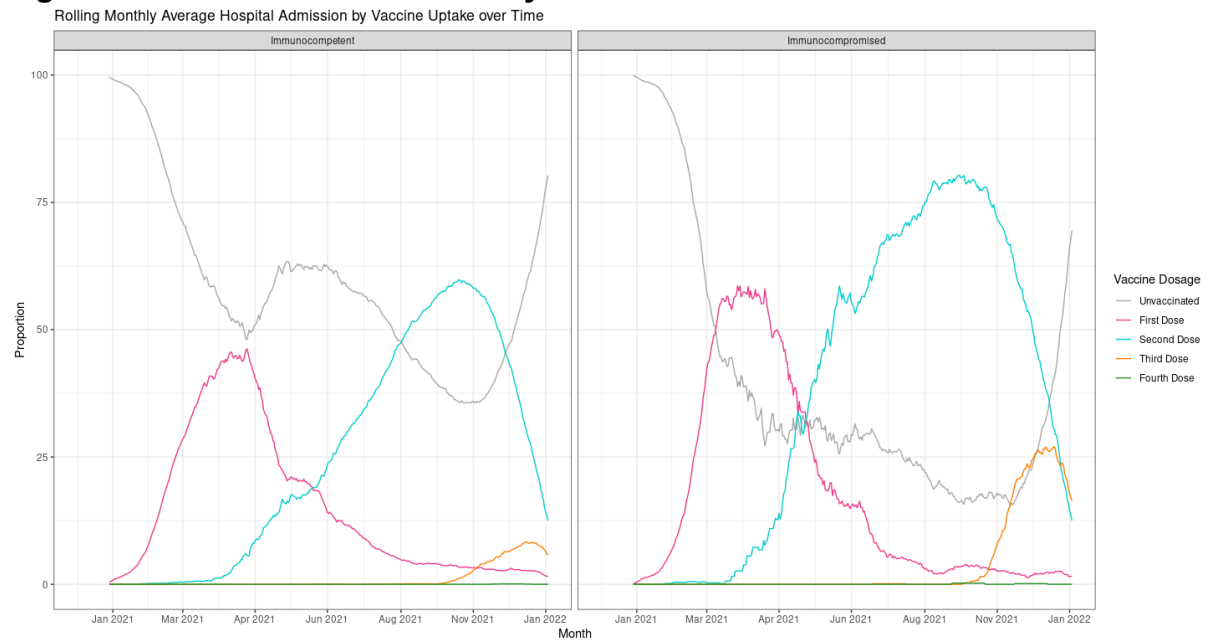


Figure S3. Steroid usage by immune status in the first 4 pandemic waves in the UK

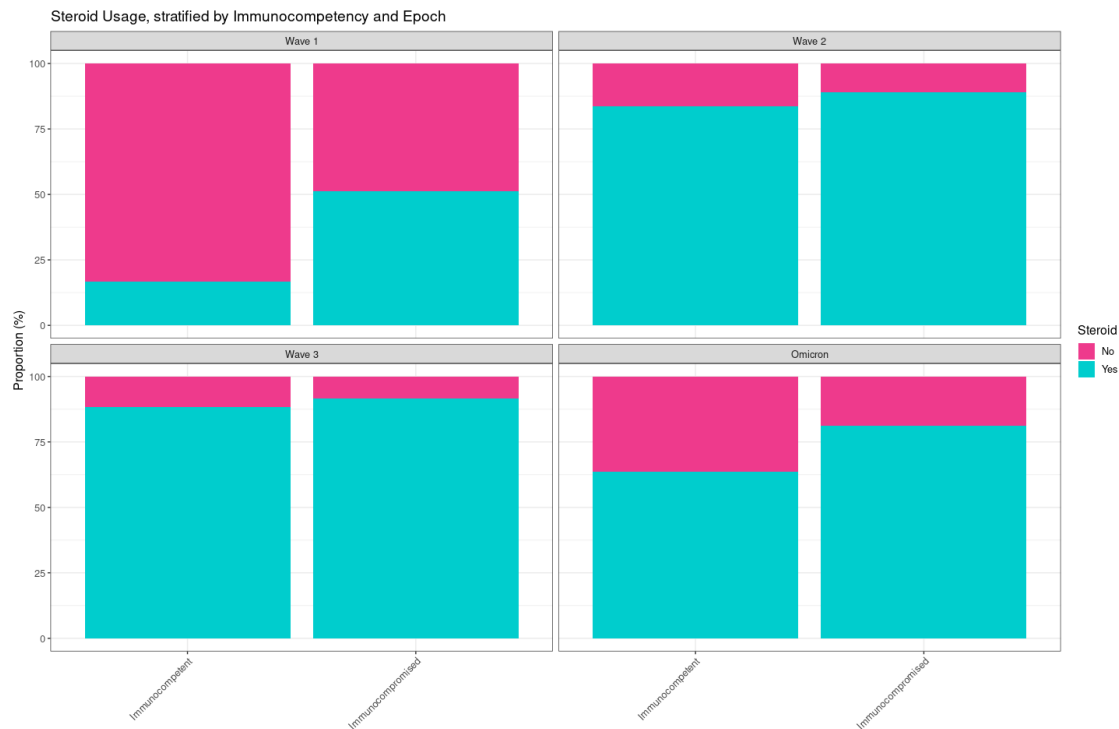


Figure S4. Tocilizumab usage by immune status in the first 4 pandemic waves in the UK



Figure S5. Outcome of hospitalised immunocompromised patients, compared with immunocompetent patients. Odds ratios (OR) for in-hospital death from univariable logistic regression in each of the first four pandemic waves in the UK.

Death: OR (95% CI, p-value)

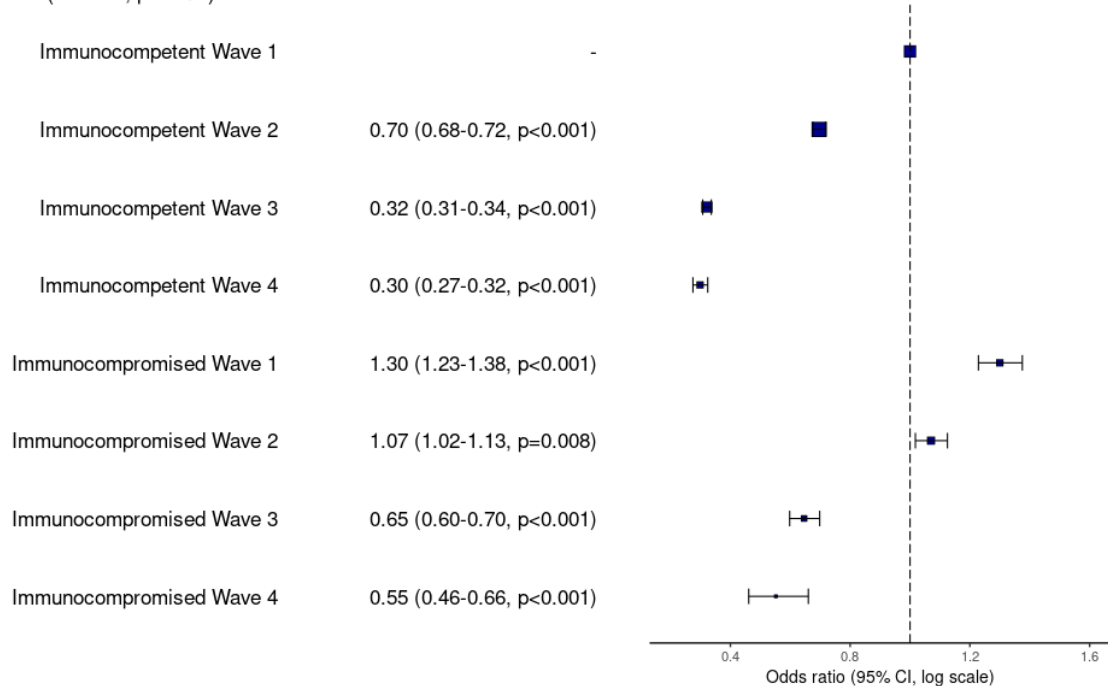


Figure S6. Number of admissions of immunocompetent and immunocompromised patients over time

Monthly Hospital Admission Frequency over Time
76,948 Patients Admitted before 8th December 2020

