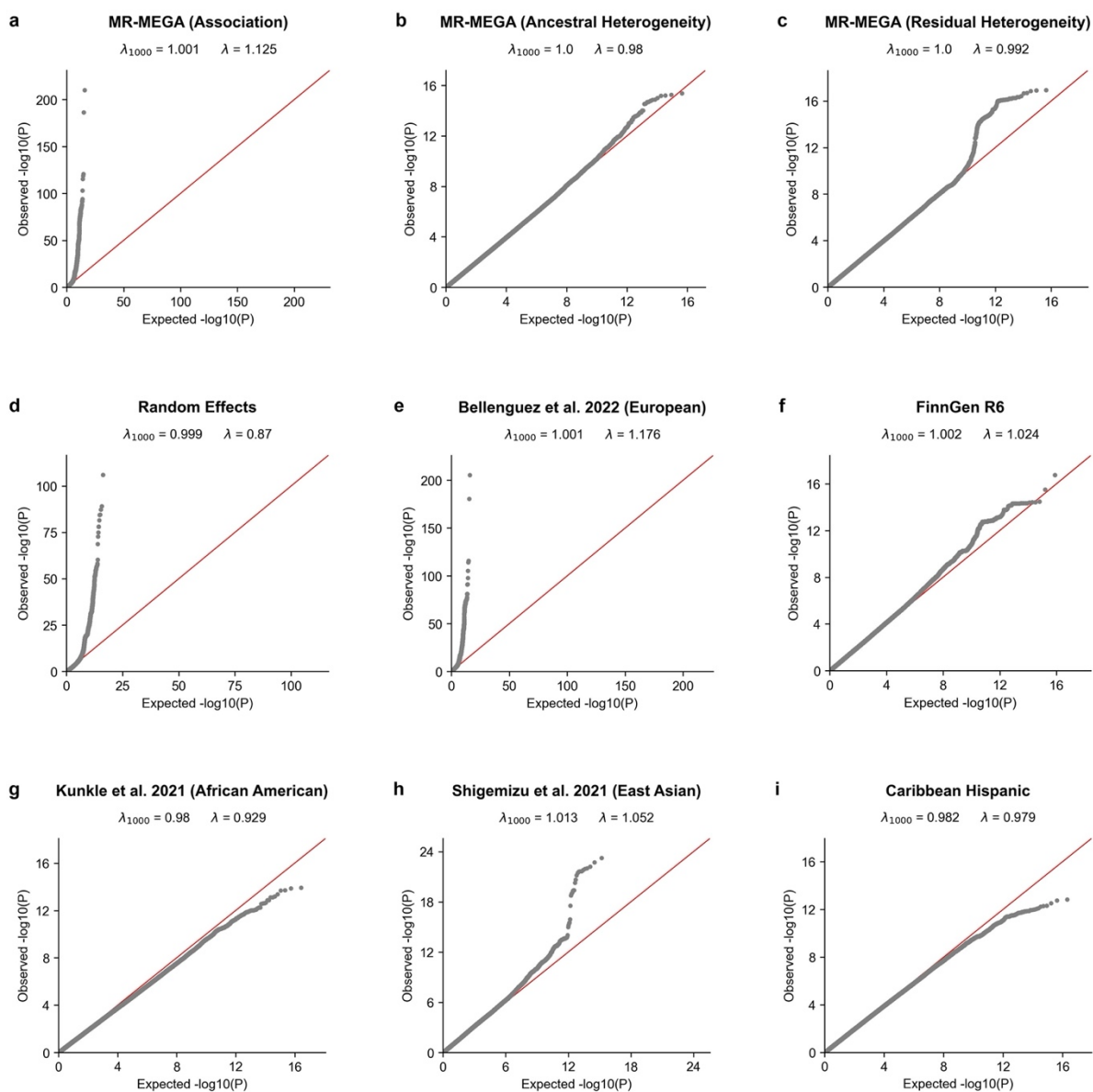
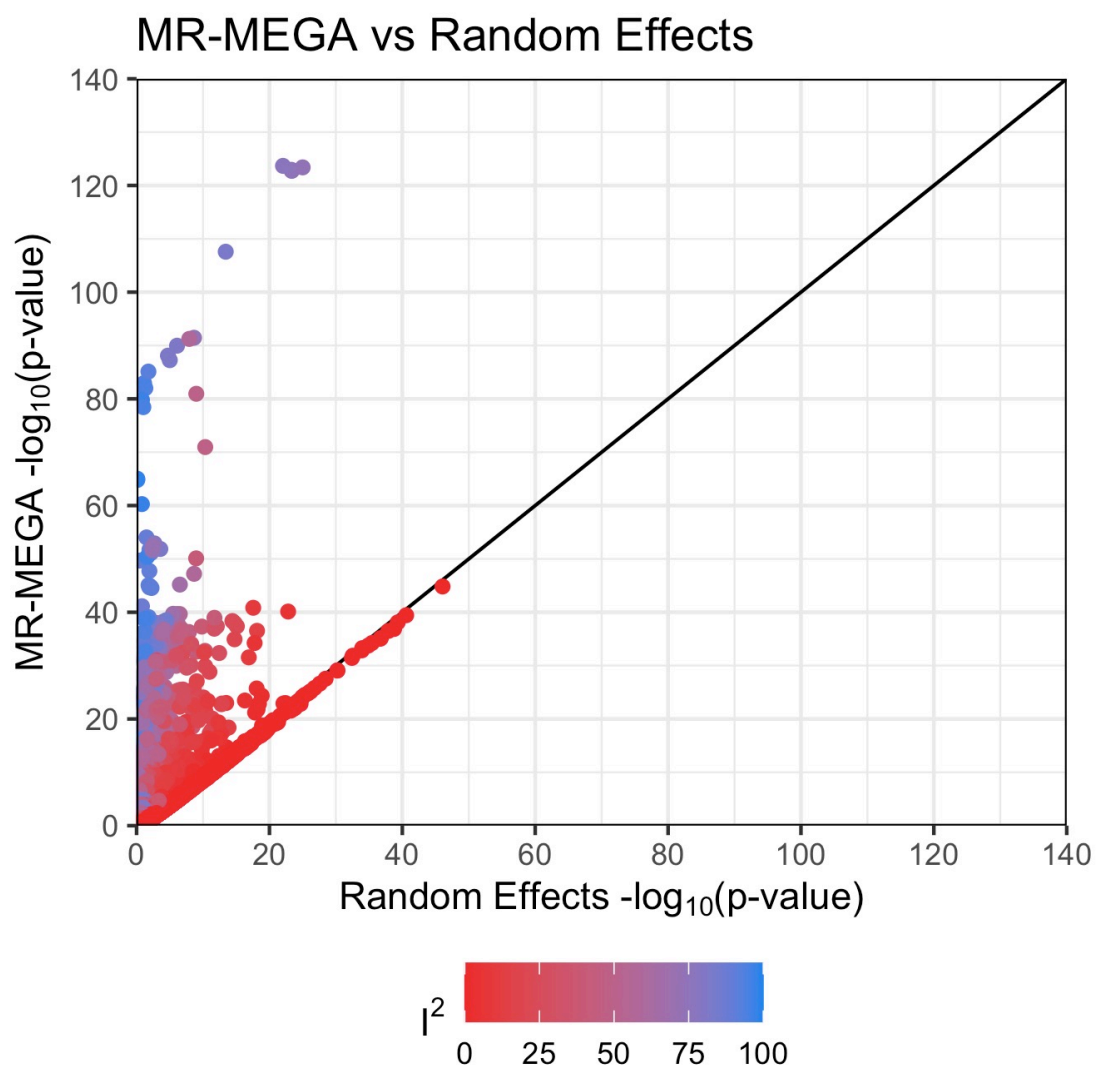


# SUPPLEMENTARY INFORMATION

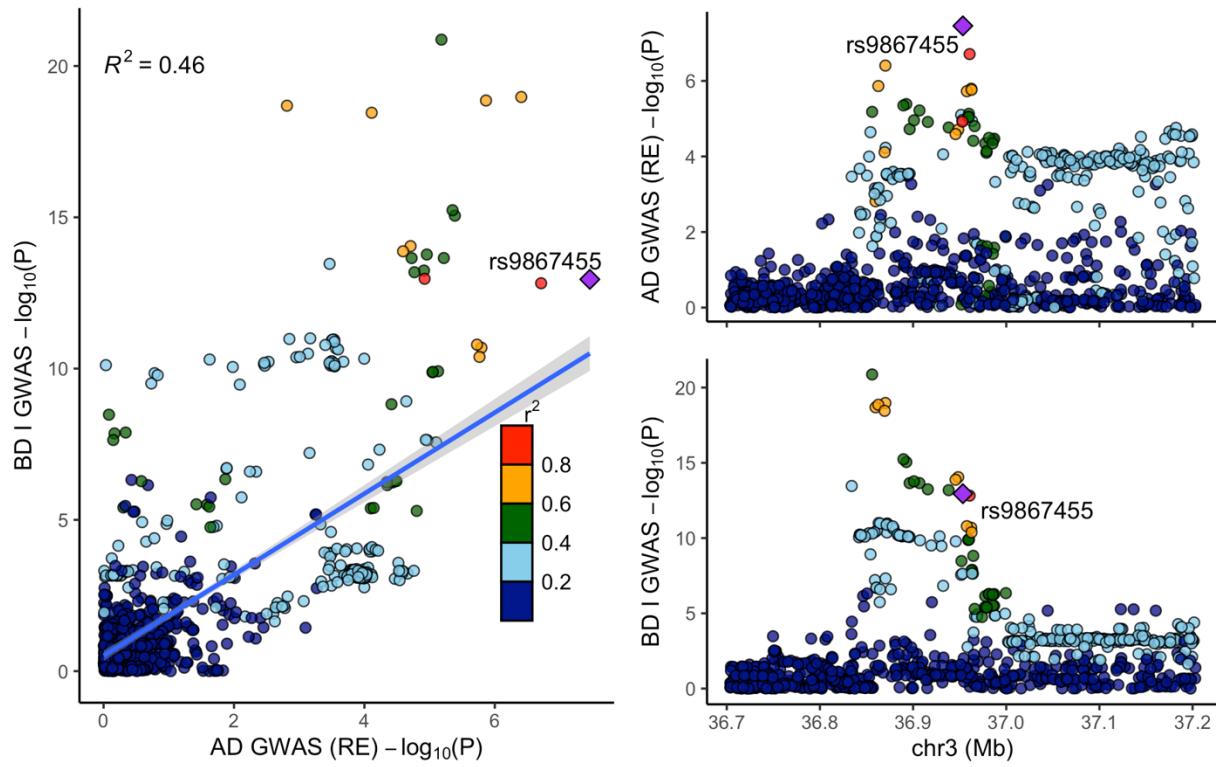
## Multi-ancestry meta-analysis and fine-mapping in Alzheimer's Disease



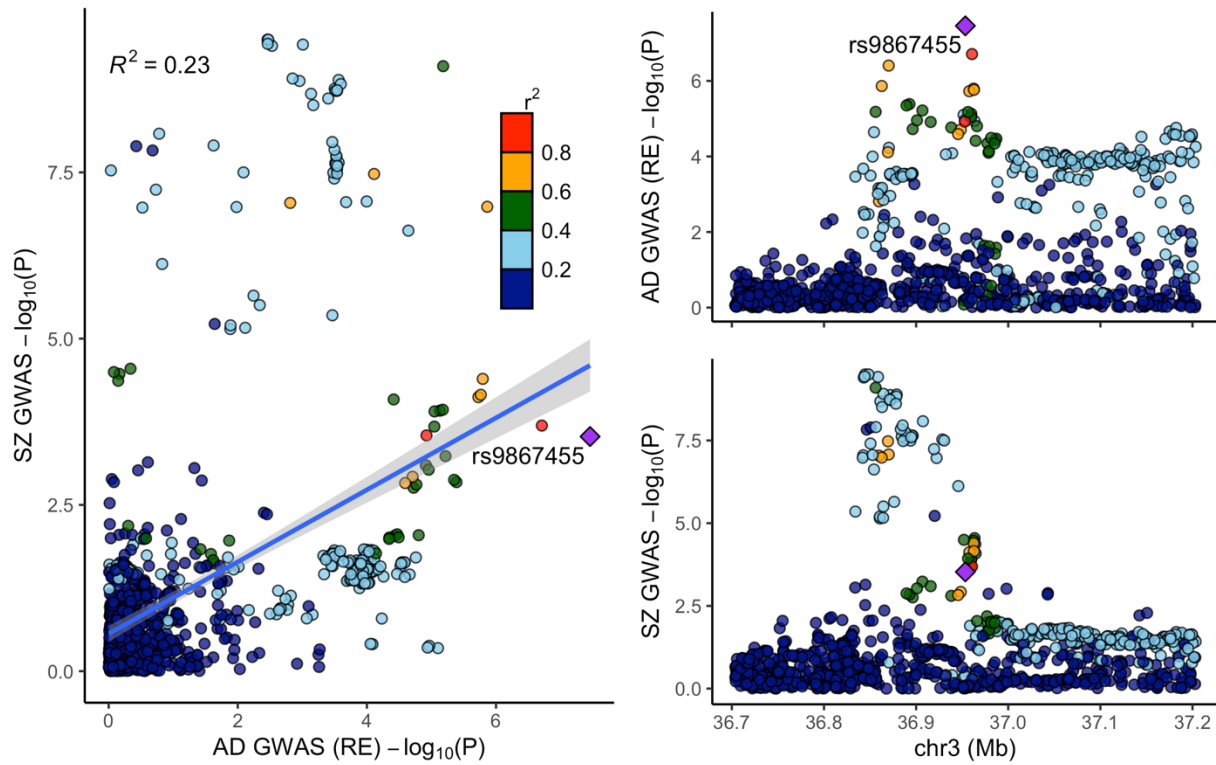
**Fig. S1:** Quantile-quantile plots and corresponding genomic inflation estimates, with and without scaling to 1000 cases and 1000 controls. MR-MEGA P-values are shown for association, ancestral heterogeneity, and residual heterogeneity. Chromosome 19 was excluded from all datasets to avoid bias by the *APOE* region. All summary statistics were filtered for MAF > 1%.



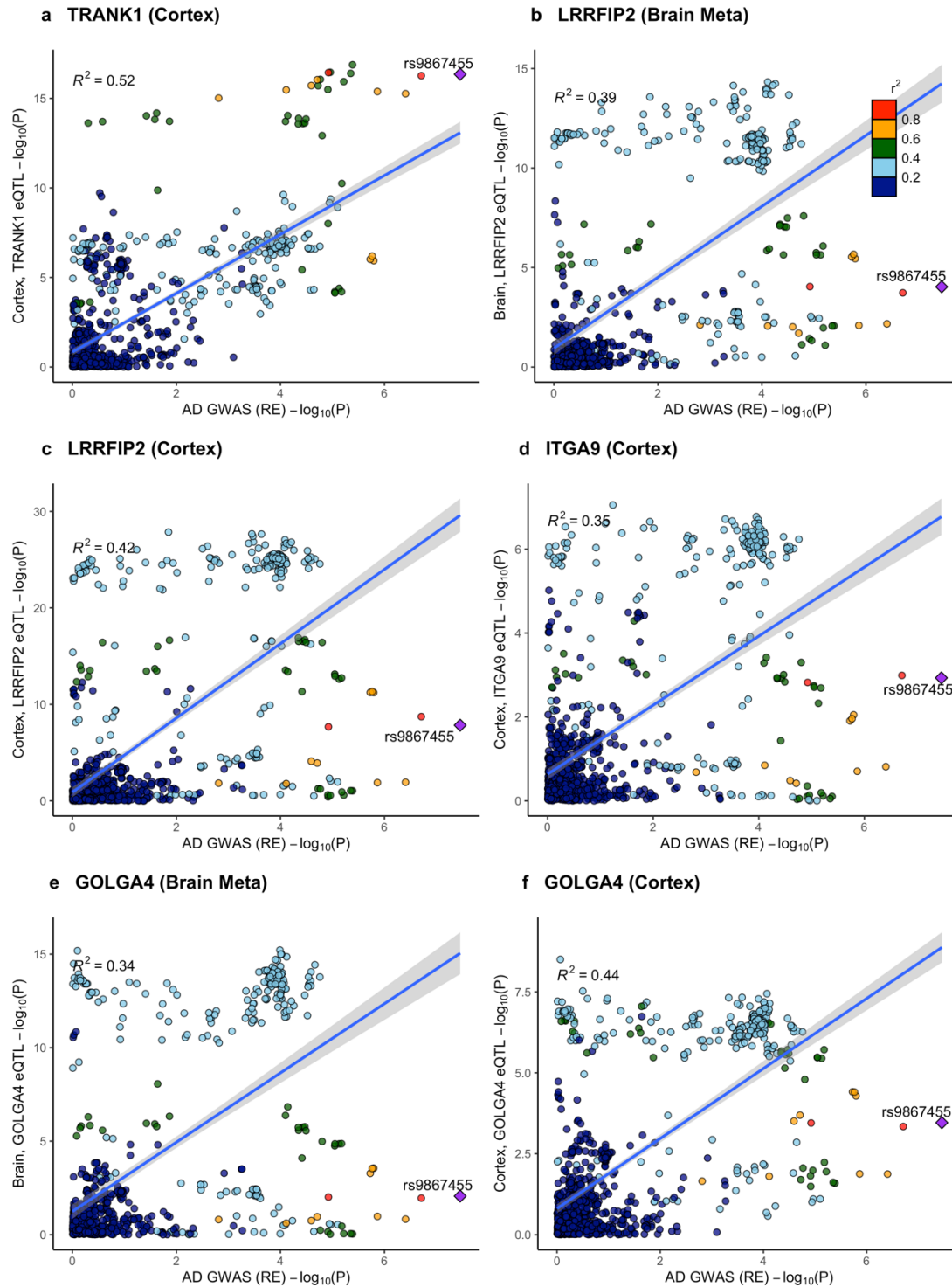
**Fig. S2:** MR-MEGA  $-\log_{10}$  P-values plotted against random effects  $-\log_{10}$  P-values. SNPs are colored by  $I^2$  value and are limited to those present in at least 4 datasets.



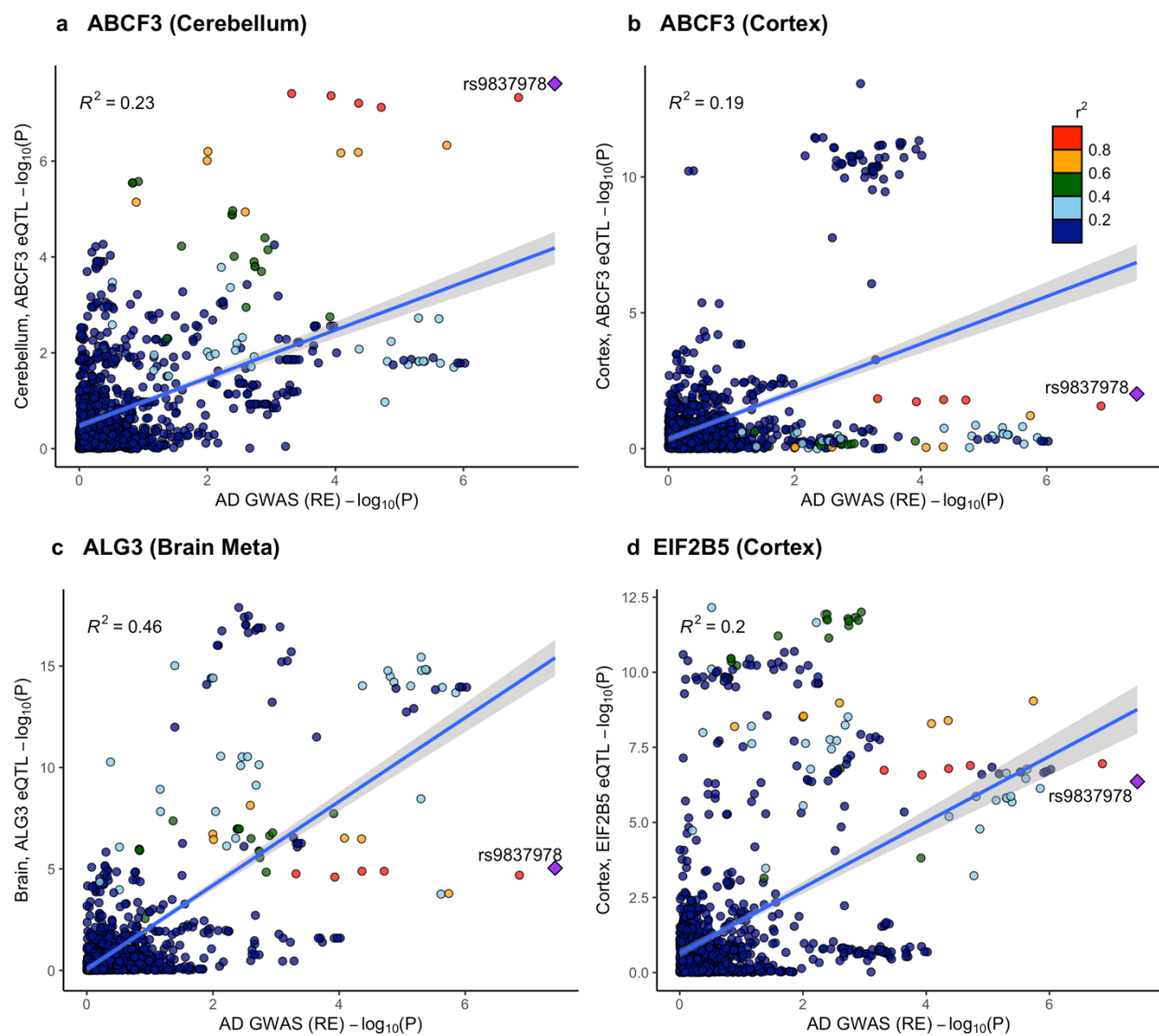
**Fig. S3:** LocusCompare plot for bipolar disorder I (BD I) and AD at the *TRANK1* locus. Reference LD patterns are based on the European population from 1000 Genomes. Points represent SNPs plotted at their  $-\log_{10}$  P-values.



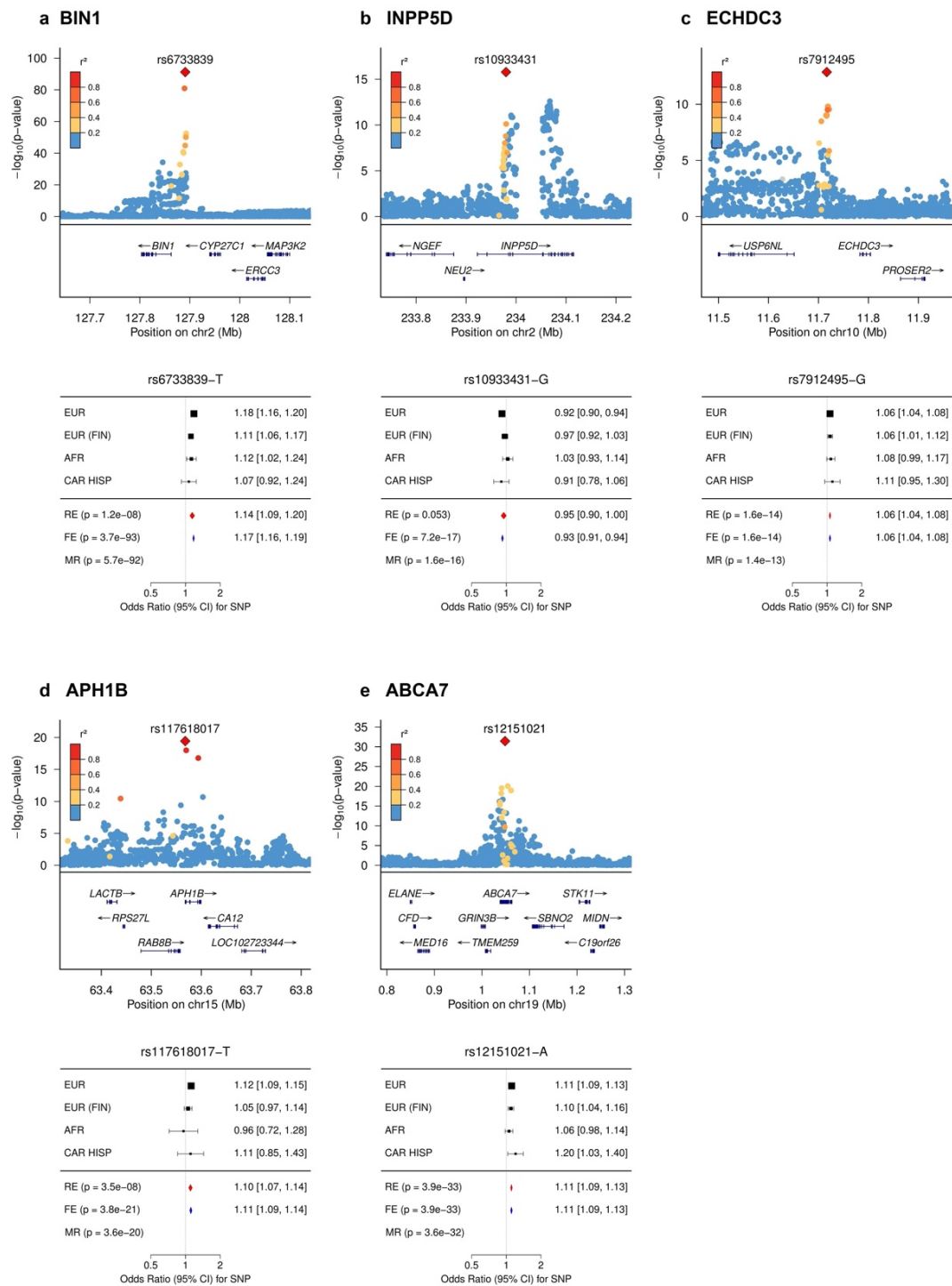
**Fig. S4:** LocusCompare plot for schizophrenia (SZ) and AD at the *TRANK1* locus. Reference LD patterns are based on the European population from 1000 Genomes. Points represent SNPs plotted at their  $-\log_{10}$  P-values.



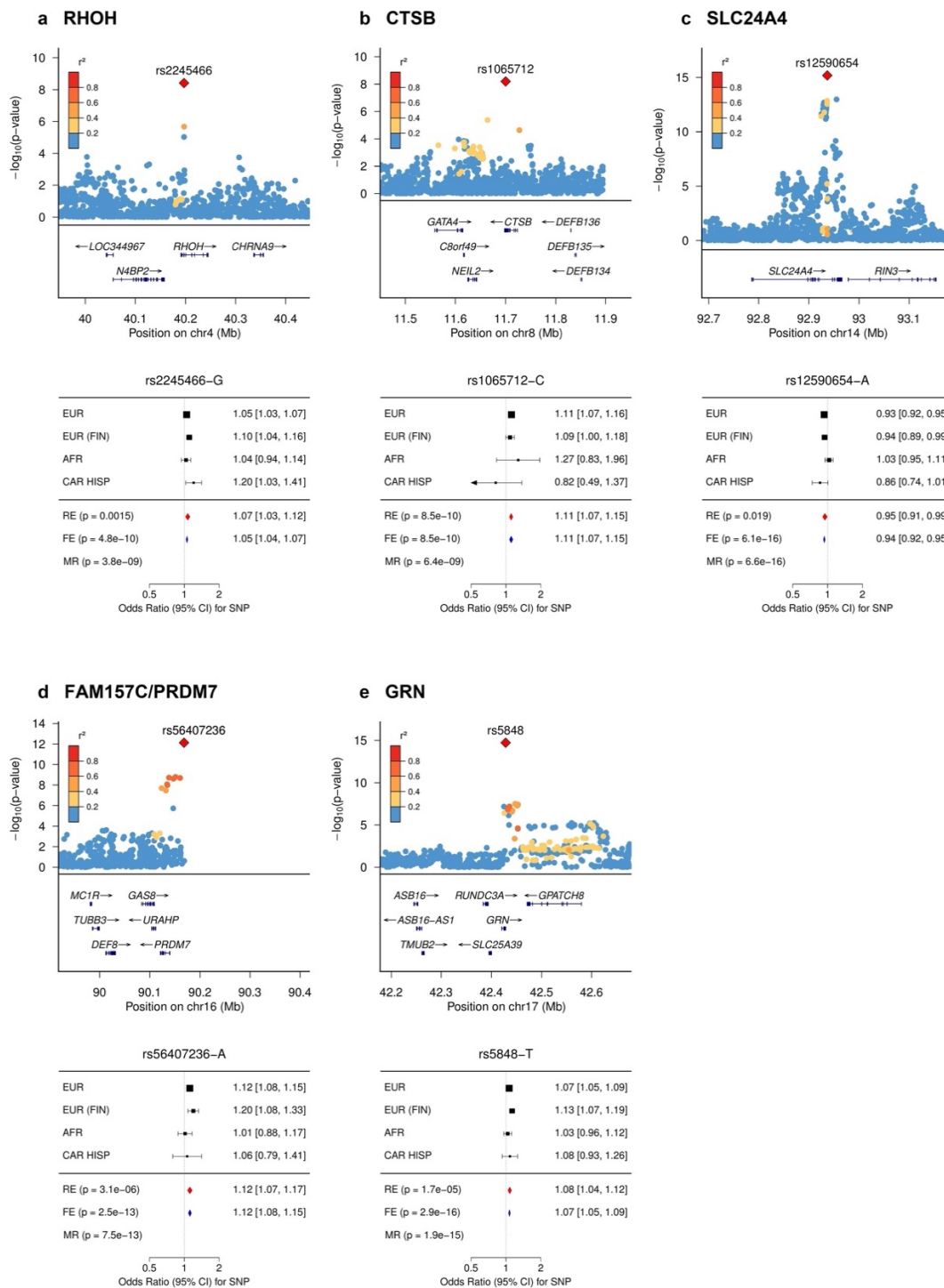
**Fig. S5:** LocusCompare plots showing colocalization at the *TRANK1* locus between the random effects meta-analysis results and brain eQTLs ( $P < 1 \times 10^{-6}$ ) in genes that were significant in SMR (FDR  $P < 0.05$ ). Reference LD patterns are based on the European population from 1000 Genomes. Points represent SNPs plotted at their  $-\log_{10}$  P-values.



**Fig. S6:** LocusCompare plots showing colocalization at the *VWA5B2* locus between the random effects meta-analysis results and brain eQTLs ( $P < 1 \times 10^{-6}$ ) in genes that were significant in SMR (FDR  $P < 0.05$ ). Reference LD patterns are based on the European population from 1000 Genomes. Points represent SNPs plotted at their  $-\log_{10}$  P-values.



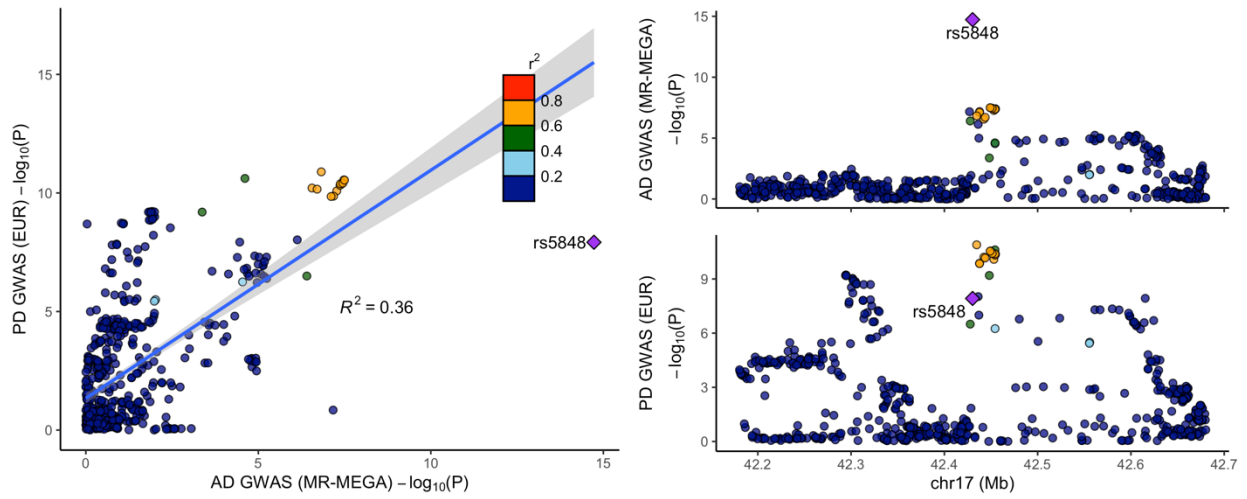
**Fig. S7:** LocusZoom and forest plots for SNPs fine-mapped in our study with posterior probability (PP) > 0.8 that have been previously fine-mapped in European studies. Reference LD patterns are based on all populations from 1000 Genomes.



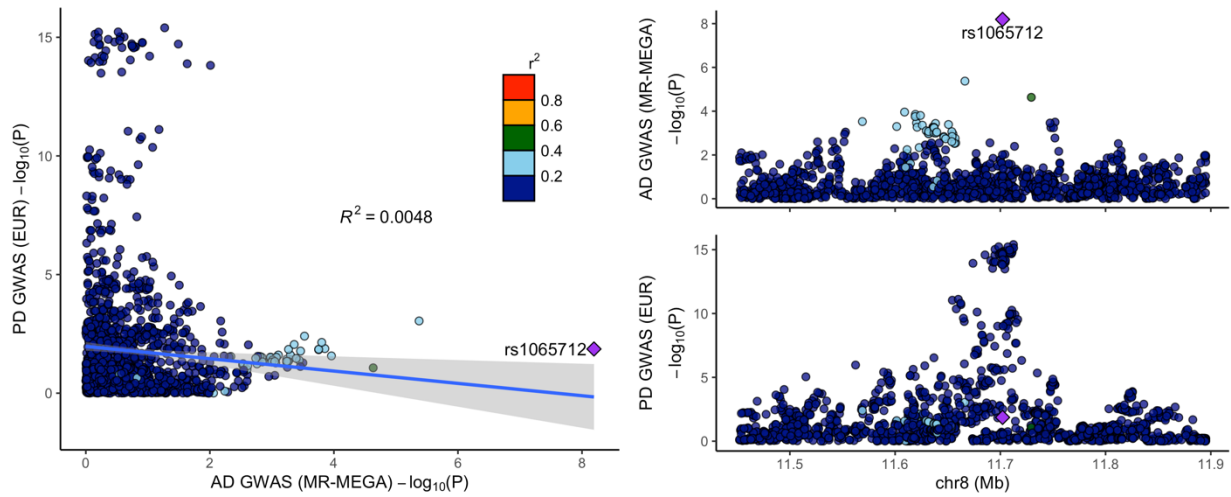
**Fig. S8:** LocusZoom and forest plots for SNPs fine-mapped in our study with posterior probability (PP) > 0.8 that have **not** been previously fine-mapped. Reference LD patterns are based on all populations from 1000 Genomes.



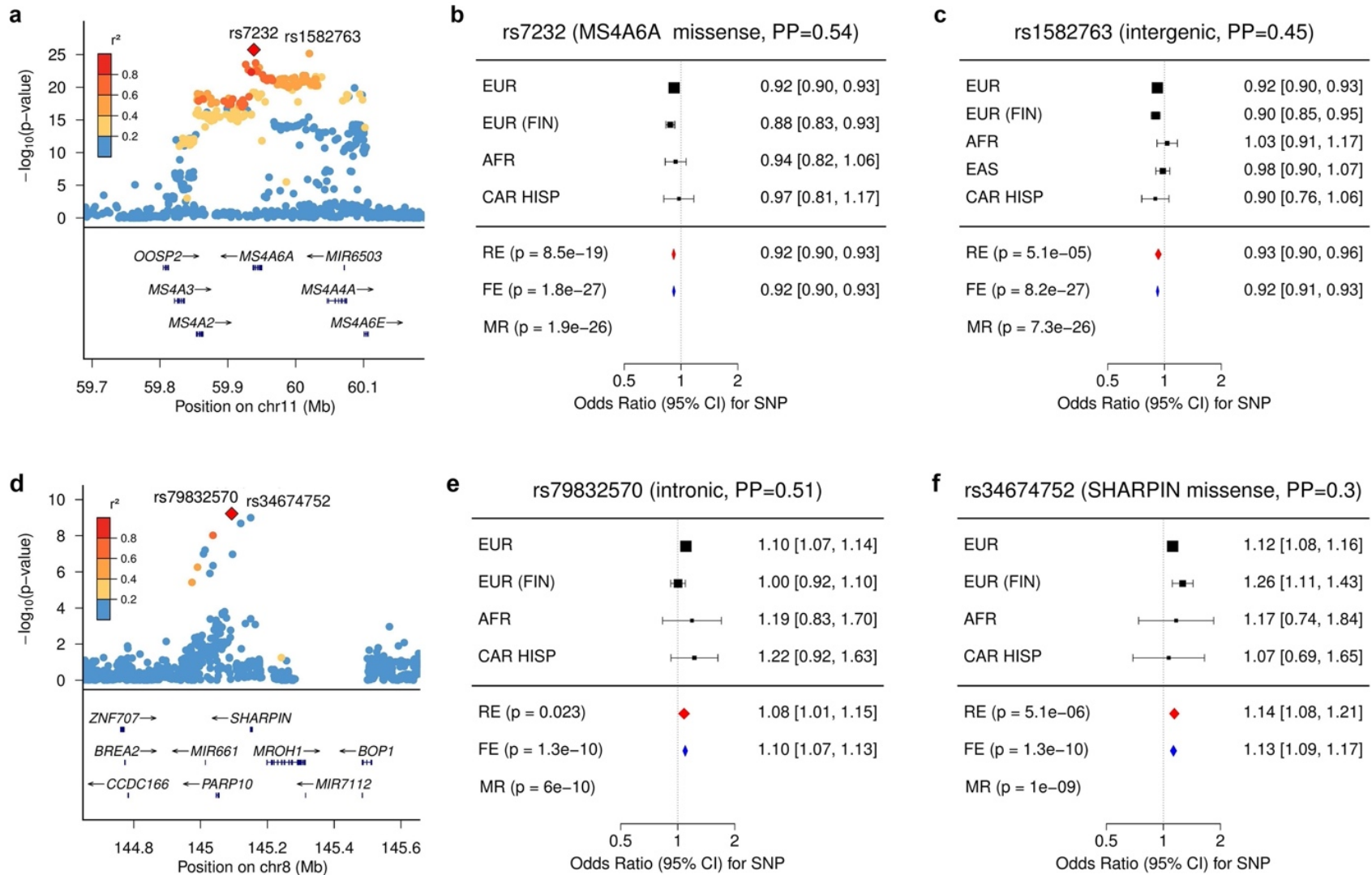
**a GRN**



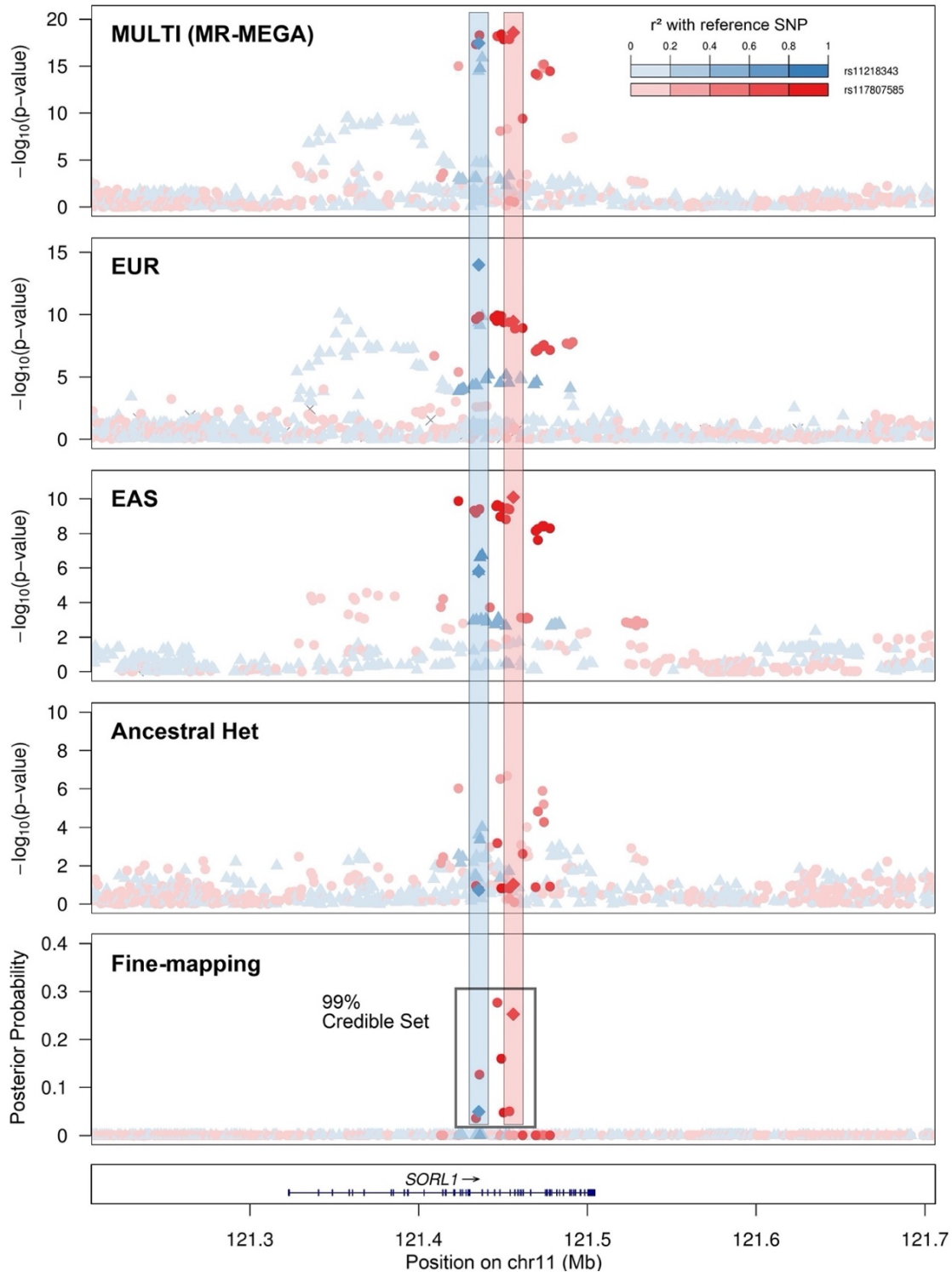
**b CTSB**



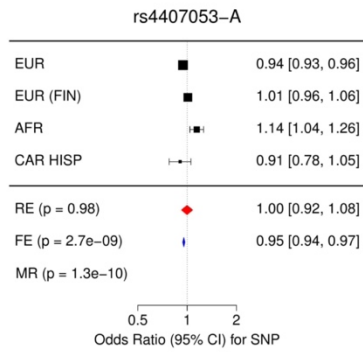
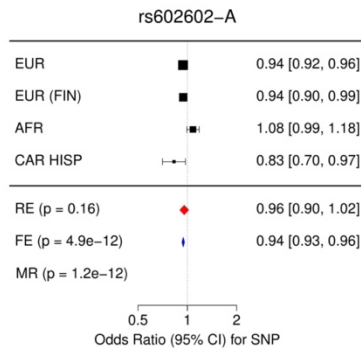
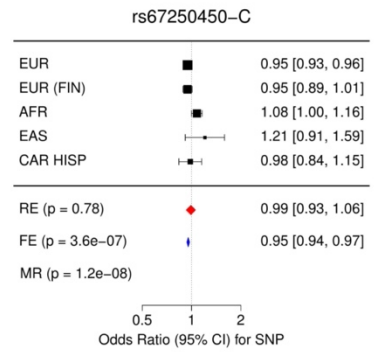
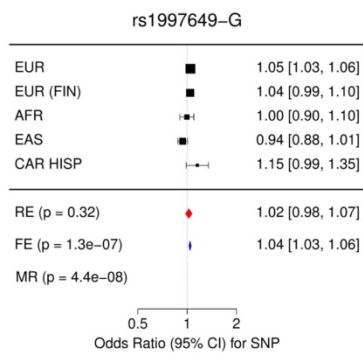
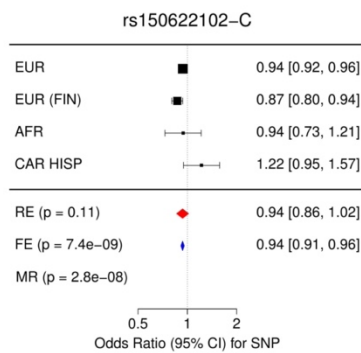
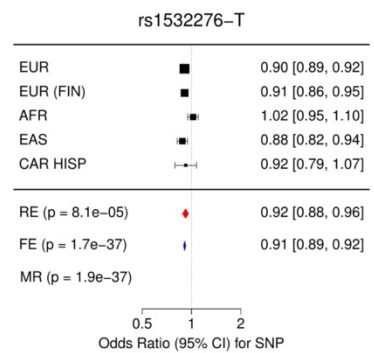
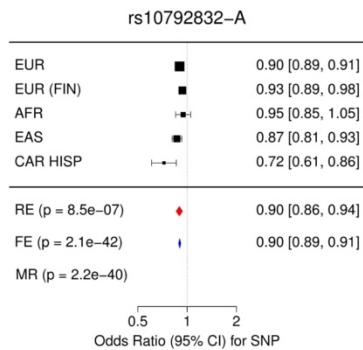
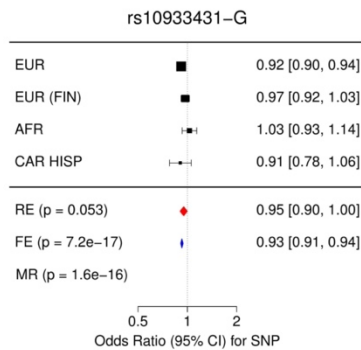
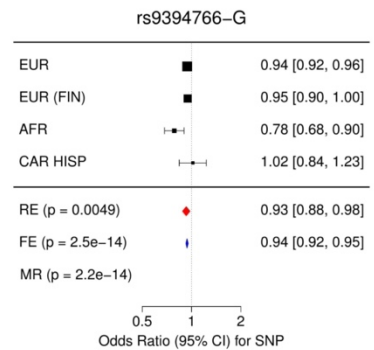
**Fig. S9:** LocusCompare plots for a) *GRN* and b) *CTSB* between AD and Parkinson's disease (PD). Reference LD patterns are based on the European population from 1000 Genomes. Points represent SNPs plotted at their  $-\log_{10}$  P-value



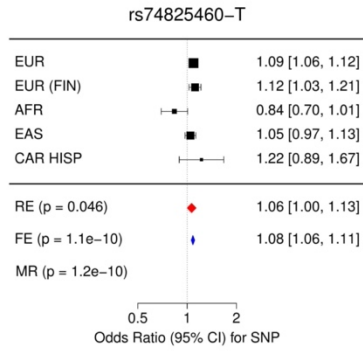
**Fig. S10:** Forest plot for fine-mapped missense variants in a) *MS4A6A*-rs7232 and d) *SHARPIN*-rs34674752 with complementary locus zooms in b) and f), respectively. Panels c) and e) show other top fine-mapped SNPs in these loci



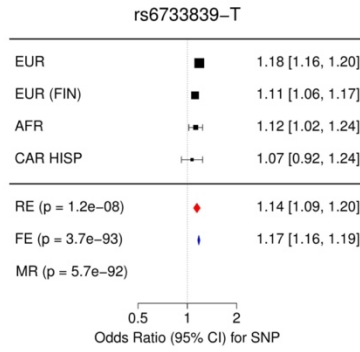
**Fig. S11:** LocusZoom plots showing different regional architecture at the *SORL1* locus in East Asian versus European populations. Diamond points represent the 2 different lead SNPs at this locus, *SORL1*-rs11218343 in Europeans and *SORL1*-rs117807585 in East Asians. SNPs are colored by LD with the respective population from 1000 Genomes.

**a PLCG2****b ADAM10****c JAZF1****d HS3ST5****e ICA1L****f CLU****g PICALM****h INPP5D****i TREM2**

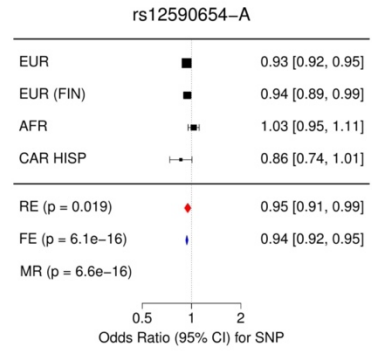
**j FERMT2**



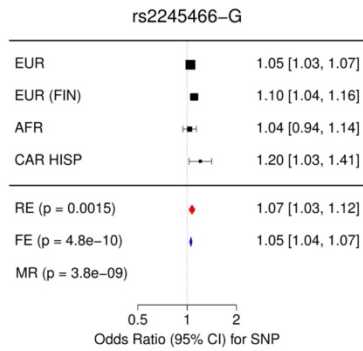
**k BIN1**



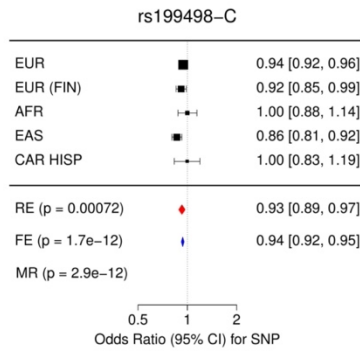
**l SLC24A4**



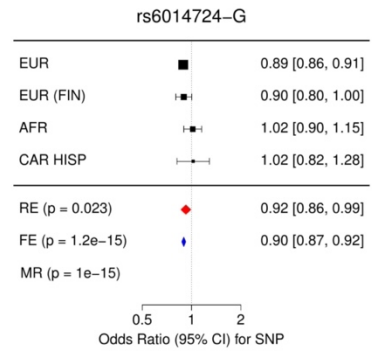
**m RHOH**



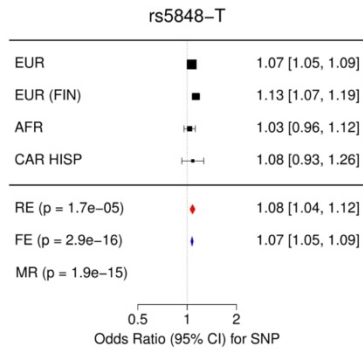
**n MAPT**



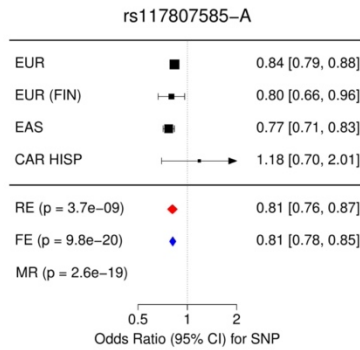
**o CASS4**



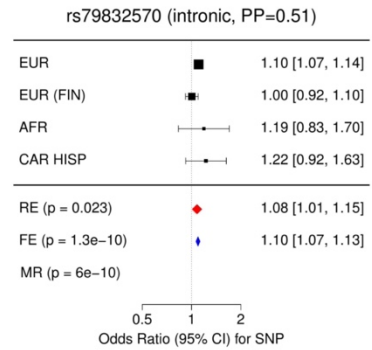
**p GRN**



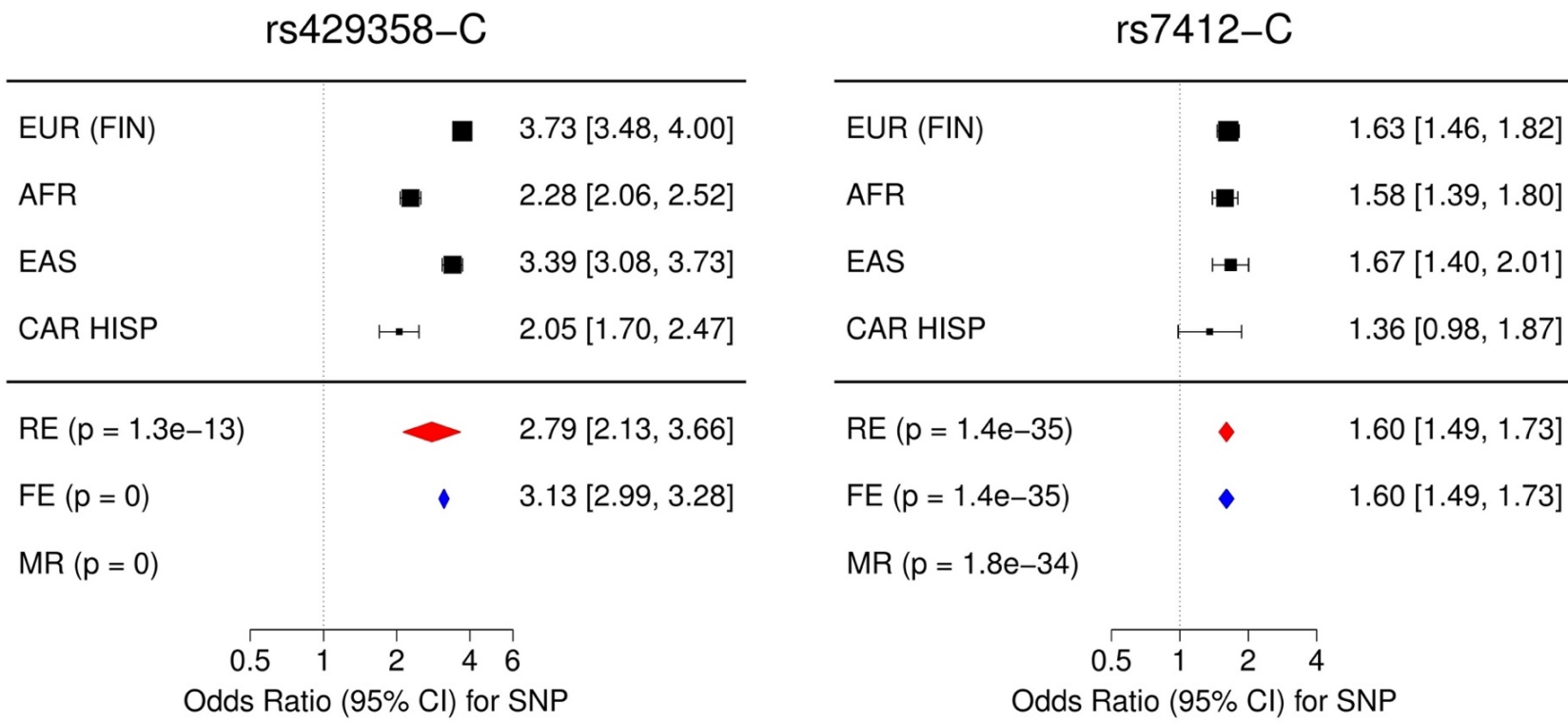
**q SORL1**



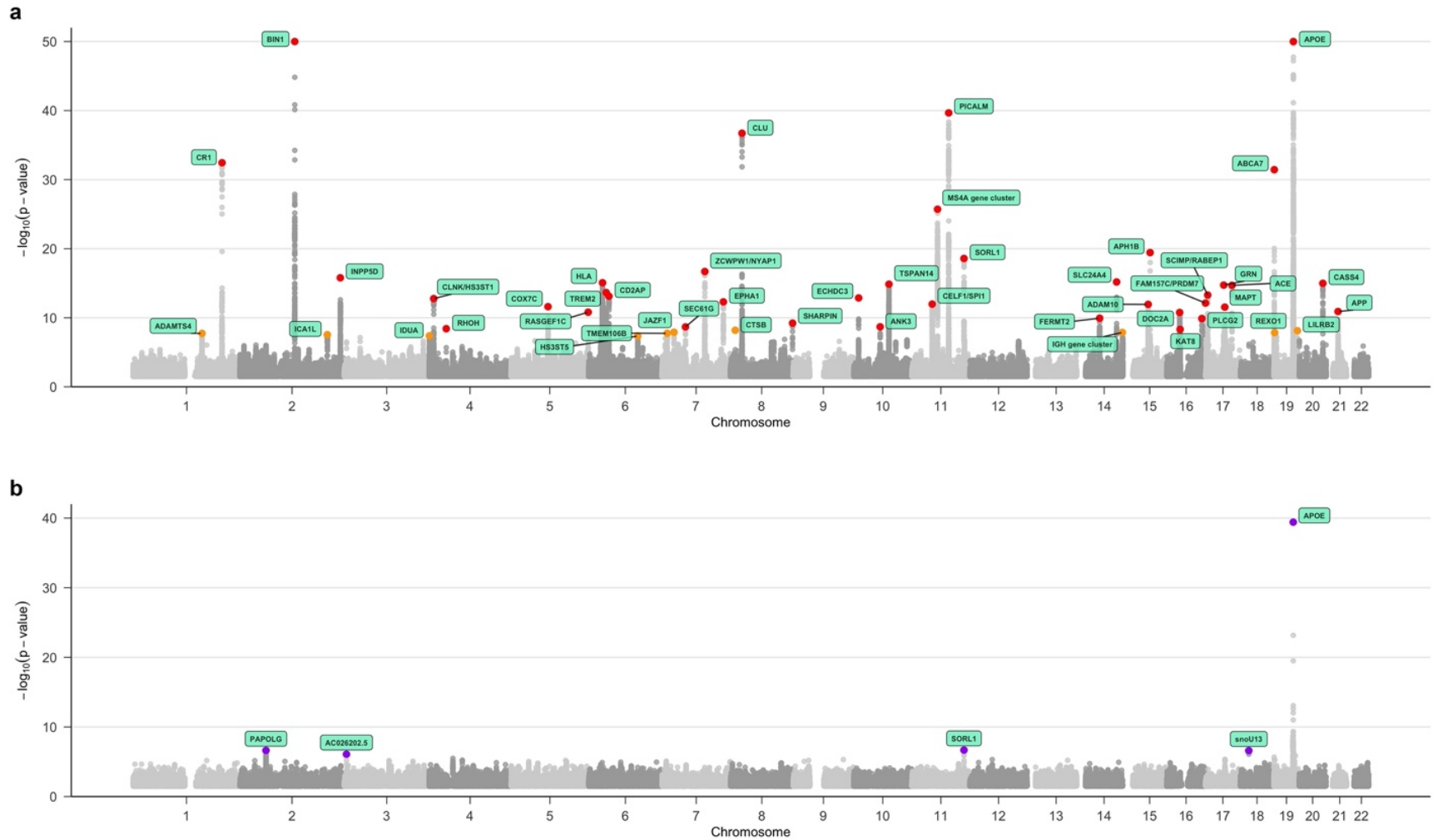
**r SHARPIN**



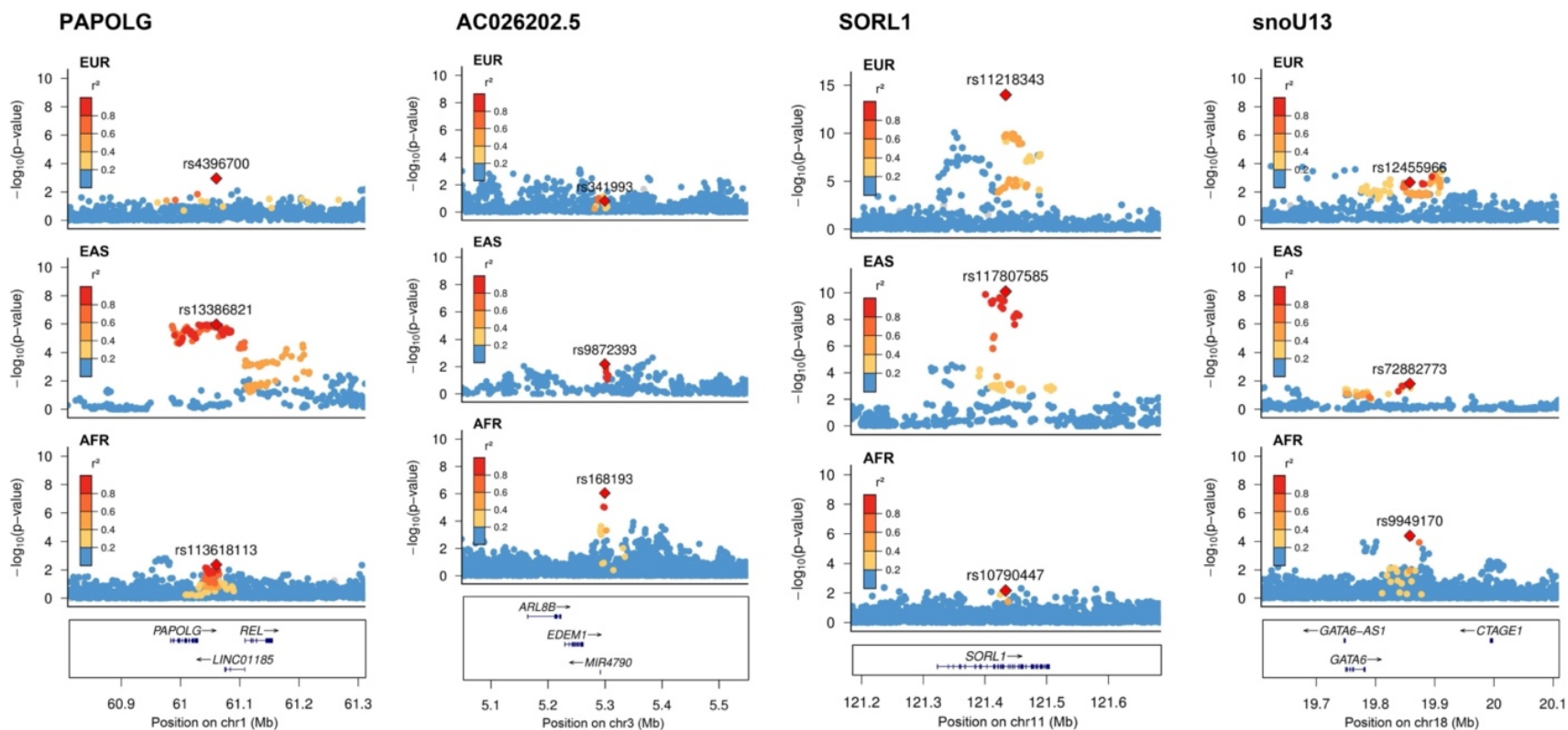
**Fig. S12:** Forest plots for loci with significant heterogeneity ( $I^2 > 30\%$ ) outside of the *APOE* region.



**Fig. S13:** Forest plots for *APOE*-rs429358 and *APOE*-rs7412.

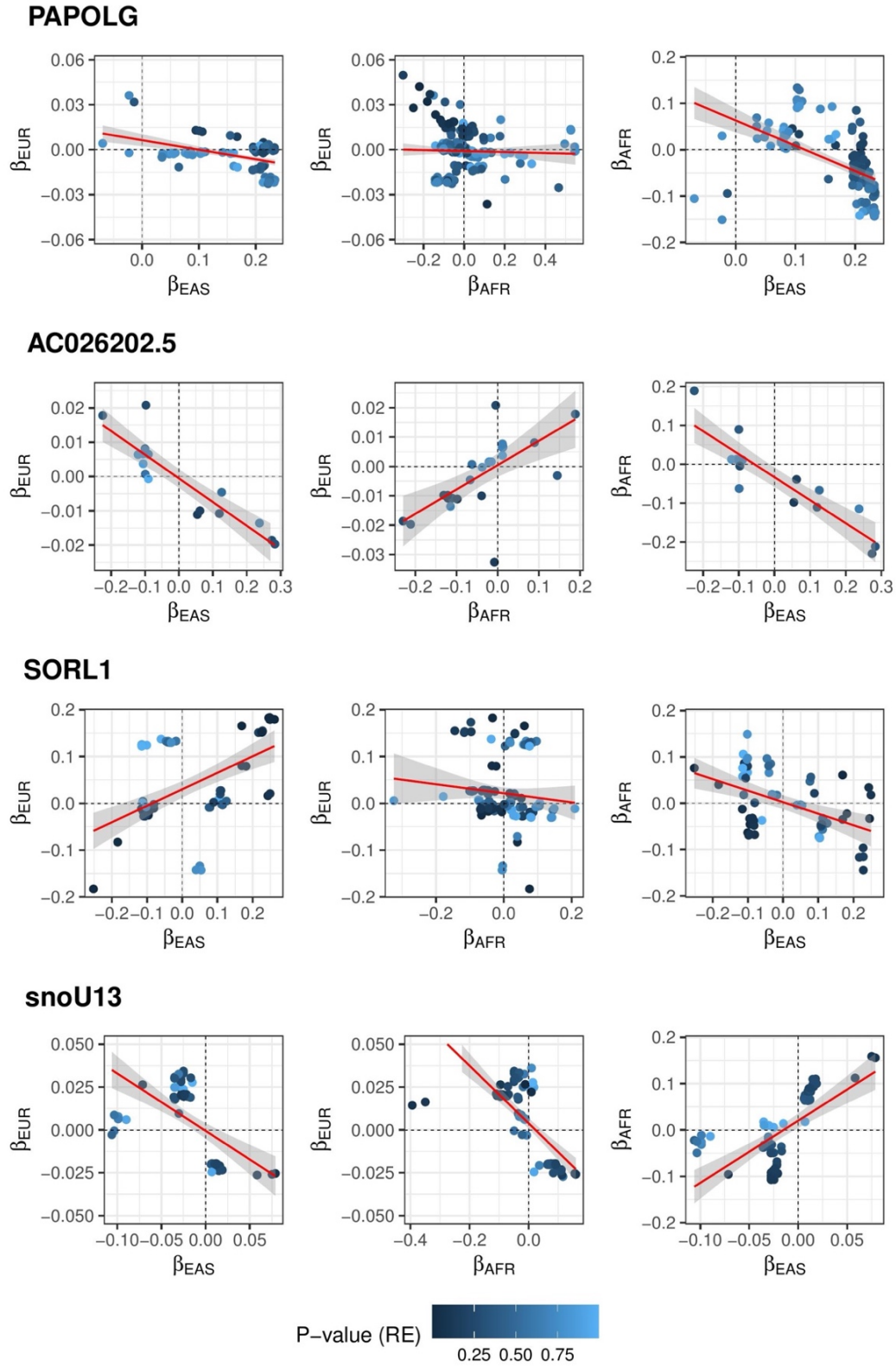


**Fig. S14:** a) Manhattan plot for MR-MEGA meta-analysis truncated at  $-\log_{10}(P) < 50$ . Red labeling corresponds to significance at  $P < 5 \times 10^{-9}$  and orange corresponds to significance at  $P < 5 \times 10^{-8}$ . b) Manhattan plot for  $P_{\text{HET}}$  from MR-MEGA truncated at  $-\log_{10}(P) < 40$ . Purple labeling corresponds to  $P < 1 \times 10^{-6}$ .

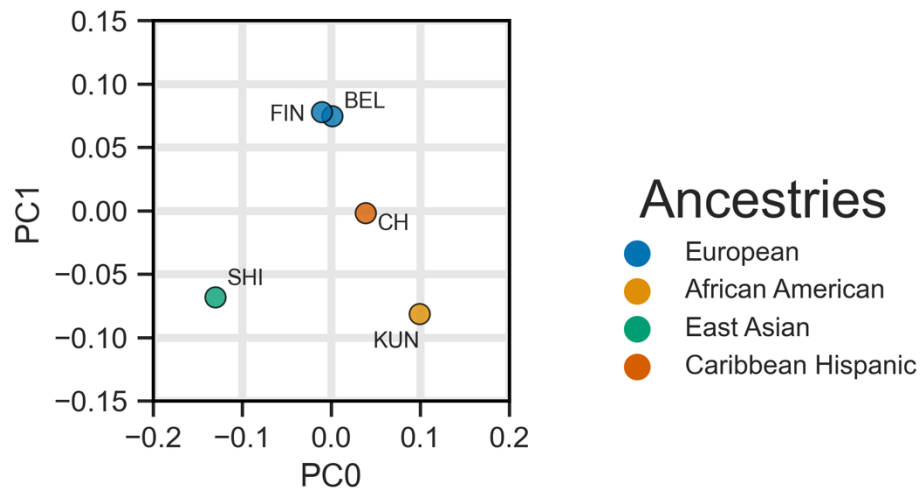


**Fig. S15a:** LocusZoom plots of loci showing significant ancestry-related heterogeneity ( $P_{\text{HET}} < 1 \times 10^{-6}$ ) near *SORL1*, *PAPOLG*, *AC026202.5*, and *snoU13*. Labeled red diamonds correspond to the lead SNP in each ancestry group.





**Fig. S15b:** Beta-beta plots showing effect size correlation of *SORL1*, *PAPOLG*, *AC026202.5*, and *snoU13* across ancestry groups.



**Fig. S16:** The first 2 ancestral principal components (PCs) created and used by MR-MEGA plotted against each other, labeled by dataset (FIN: FinnGen R6, BEL: Bellenguez et al., CH: Caribbean Hispanic, SHI: Shigemizu et al., KUN: Kunkle et al.) and color coded by ancestry group.