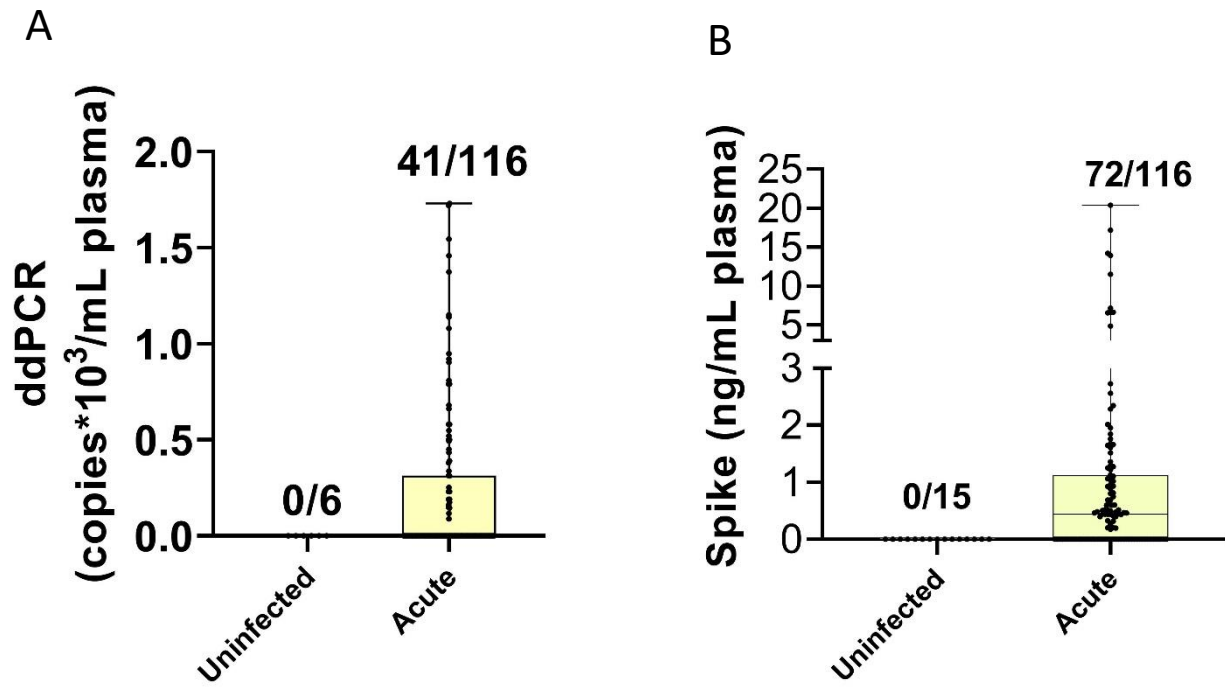


<b>Supplementary Table 1: Correlation Analyses of Clinical Characteristics with Viral RNA, Spike level in Plasma and Plasma-derived EVs in COVID-19 Individuals</b>			
	<b>Viral RNA [Correlation (p-value)]</b>	<b>Plasma spike [Correlation (p-value)]</b>	<b>SEVs spike [Correlation (p-value)]</b>
<b>Acutely -infected COVID-19 Cohort</b>			
<i>Age</i>	0.0981 (0.2948)	0.0398 (0.6728)	-0.0061 (0.9597)
<i>BMI</i>	0.04 (0.6695)	0.0809 (0.3898)	-0.2108 (0.0776)
<i>Peak WHO Score</i>	0.0497 (0.6026)	<b>0.2002 (0.0351) *</b>	0.0716 (0.5646)
<i>Length of hospitalization</i>	0.1379 (0.2549)	<b>0.253 (0.0359) *</b>	0.1579 (0.324)
<i>WBC Count</i>	0.1009 (0.2856)	0.0567 (0.5508)	0.1446 (0.2325)
<i>Lymphocyte Count</i>	-0.133 (0.1806)	-0.0676 (0.4995)	-0.2072 (0.1031)
<i>Creatinine</i>	0.1477 (0.1153)	0.0055 (0.9536)	0.0509 (0.6758)
<i>Lactate Dehydrogenase</i>	<b>0.2532 (0.0273) *</b>	0.1904 (0.0994)	0.1781 (0.2309)
<i>Ferritin</i>	0.1543 (0.1586)	0.0627 (0.5689)	0.1888 (0.1892)
<i>D.Dimer</i>	0.0863 (0.4136)	<b>0.2338 (0.0249) *</b>	<b>0.3544 (0.0092) **</b>
<i>C-Reactive Protein</i>	0.1335 (0.2149)	0.1451 (0.1774)	-0.1266 (0.3713)
<b>Post-Acute Infection Cohort</b>			
<i>Age</i>	0.0456 (0.761)	-0.0231 (0.8774)	-0.1102 (0.6343)
<i>Days between last positive test and study enrollment</i>	-0.1712 (0.2552)	0.1185 (0.4326)	-0.1635 (0.4789)
<i>BMI</i>	0.0717 (0.6646)	-0.1851 (0.2594)	-0.1465 (0.5377)
<i>Length of Hospitalization</i>	<b>0.3338 (0.0435)*</b>	-0.1634 (0.3339)	0.442 (0.0581)



**Supplementary figure 1:** Analysis of SARS-CoV-2 RNA (A) and Spike protein levels (B) in the plasma from *Acute* COVID-19 patients and never infected with COVID-19 controls as measured by dd-PCR and ELISA.