

1 **Title**

2 Modifiable lifestyle activities affect cognition in cognitively healthy middle-aged individuals
3 at risk for late-life Alzheimer's Disease

4 **Running title:** Midlife lifestyle, AD risk and cognition

5 **Authors**

6 Amy **Heneghan**^{ab1}, Feng **Deng**^{ab1}, Katie **Wells**^c, Karen **Ritchie**^{cd}, Graciela **Muniz-Terrera**
7 ^c, Craig W **Ritchie**^c, Brian **Lawlor**^{ab}, Lorina **Naci**^{ab*}

8 ^aTrinity College Institute of Neuroscience, School of Psychology, Trinity College Dublin,
9 Dublin, Ireland.

10 ^bGlobal Brain Health Institute, Trinity College Dublin, Dublin, Ireland

11 ^cEdinburgh Dementia Prevention, University of Edinburgh, Edinburgh, UK

12 ^dINSERM and University of Montpellier, Montpellier, France.

13 ¹ These authors contributed equally to this work

14 *** Corresponding author:**

15 Lorina Naci

16 School of Psychology

17 Trinity College Institute of Neuroscience

18 Global Brain Health Institute

19 Trinity College Dublin

20 Dublin, Ireland

21 Telephone: +353 (0)87 688 5642

22 Email: nacil@tcd.ie

23 **Abstract**

24 It is now acknowledged that Alzheimer's Disease (AD) processes are present decades before
25 the onset of clinical symptoms, but it remains unknown whether lifestyle factors can protect
26 against these early AD processes in mid-life. We asked whether modifiable lifestyle activities
27 impact cognition in middle-aged individuals who are cognitively healthy, but at risk for late
28 life AD. Participants (40–59 years) completed cognitive and clinical assessments at baseline
29 (N = 206) and two years follow-up (N = 174). Mid-life activities were measured with the
30 Lifetime of Experiences Questionnaire. We assessed the impact of lifestyle activities, known
31 risk factors for sporadic late-onset AD (Apolipoprotein E ϵ 4 allele status, family history of
32 dementia, and the Cardiovascular Risk Factors Aging and Dementia score), and their
33 interactions on cognition. More frequent engagement in physically, socially and intellectually
34 stimulating activities was associated with better cognition (verbal, spatial and relational
35 memory), at baseline and follow-up. Critically, more frequent engagement in these activities
36 was associated with stronger cognition (verbal and visuospatial functions, and conjunctive
37 short-term memory binding) in individuals with family history of dementia. Impaired
38 visuospatial function is one of the earliest cognitive deficits in AD and has previously
39 associated with increased AD risk in this cohort. Additionally, conjunctive memory functions
40 have been found impaired in the pre-symptomatic stages of AD. These findings suggest that
41 modifiable lifestyle activities offset cognitive decrements due to AD risk in mid-life and
42 support the targeting of modifiable lifestyle activities for the prevention of Alzheimer's
43 Disease.

44

45 **Keywords:** Cognitively Healthy; Mid-life; Cognition; Lifestyle Factors; Risk Factors;
46 Alzheimer's Disease

47 **Introduction**

48 Dementia is a growing pandemic that presents profound challenges to health care systems,
49 families, and societies throughout the world. Alzheimer’s Disease (AD), the most common
50 etiology of dementia, is characterized by relentless neurodegeneration and accelerated
51 cognitive decline in the years following presentation of clinical symptoms. It is now accepted
52 that AD pathological processes are present decades before clinically relevant symptoms
53 appear [1-2]. In the absence of effective pharmacological treatments, there is an immediate
54 need for early identification, intervention and risk burden modification [3-4] for AD.

55 Growing evidence suggests that up to 40% of all dementia cases are associated with known
56 lifestyle-related modifiable risk factors, such as alcohol consumption, obesity and
57 hypertension among others [4]. As exposure to most of these risk factors begins decades
58 before dementia onset, interventions must be implemented in mid-life [5-7]. Mid-life, thus,
59 presents a critical and unique window for disease-altering interventions, before the
60 manifestation of substantial brain damage. However, the indicators of AD in mid-life, and the
61 impact of modifiable lifestyle factors on the incipient disease process remain poorly
62 understood.

63 AD is neuropathologically characterized by the accumulation of beta-amyloid ($A\beta$) and
64 hyperphosphorylated TAU (pTau) [8-9]. The etiology of the sporadic form of AD remains
65 poorly understood. However, recent studies suggest that tau deposition, is a key etiological
66 factor that presages sporadic AD [10-12]. Analyses of thousands human brains across the
67 lifespan show that tau pathology begins about a decade before formation of $A\beta$ plaques [13].
68 Additionally, tau pathology, but not $A\beta$, correlates with progressive grey matter loss [14] and
69 cognitive impairment [15].Neuropathological findings show that tau pathology starts in late
70 young adulthood and early midlife [30–40years], in subcortical nucleus locus coeruleus (LC)

71 [9] —the key brain site for the production of noradrenaline— then spreads initially to the
72 transentorhinal and entorhinal cortex [8], to the hippocampal and neocortical association
73 cortex, and finally throughout neocortex. By contrast, $A\beta$ plaques are usually first deposited
74 in the association neocortex of the temporal lobe, and then extend throughout the cortex,
75 including subcortical structures, with disease progression [13]. Therefore, brain changes
76 related to sporadic AD in early midlife (i.e. 40-50 years) are likely associated with
77 neurodegeneration from to pTau deposition and, in later age groups, $A\beta$ plaques additionally
78 contribute strongly to underlying neurodegeneration.

79 Studies on preclinical AD have used risk stratification approaches to investigate early,
80 preclinical changes. Key risk factors include the Apolipoprotein E (APOE) $\epsilon 4$ genotype [16-
81 17], the main genetic risk factor for sporadic late onset AD in the Indo-European population
82 [18], and family history (FH) of dementia [16, 19-20]. Several dementia risk scores
83 incorporating lifestyle risk factors have been devised [21-23]. Amongst them, the
84 Cardiovascular Risk Factors Aging and Dementia (CAIDE) score has been optimized for
85 middle-aged populations [23] and has been validated in a large US population followed
86 longitudinally over 40 years [24].

87 The PREVENT Dementia Program [25] initiated in 2013, is a prospective study of the
88 cognitively healthy middle-aged children of persons with dementia, designed to seek out
89 clinical and biological changes, which may subsequently be used as short-term outcome
90 measures for midlife secondary preventions. Studies of this and other similar cohorts of
91 cognitively healthy midlife individuals have related these three risk factors to a range of
92 structural and functional brain changes, including APOE $\epsilon 4$ genotype to loss of volume in the
93 hippocampal molecular layer [26], cerebral hyperperfusion [27-28], reduced grey matter
94 volume in the right hippocampus, precentral gyrus, and cerebellar cortex [29], and to

95 decreased cortical thickness in the frontal cortex [30]; FH to volumetric alterations in
96 hippocampal subfields and to disrupted white matter integrity [27, 31]; and, CAIDE to whole
97 brain atrophy [32-34] and to hippocampal volume loss [31, 34]. All three risk groups have
98 also been found to impact cognition in mid-life. APOE ϵ 4 genotype has been significantly
99 associated with improvements in verbal, spatial and relational memory [35], immediate recall
100 [36] and form perception [34], FH with poorer verbal processing and memory performance in
101 participants under 65 years [37], and poorer executive function [38], and higher CAIDE
102 scores with impaired verbal and visuospatial functions, and short-term (conjunctive) memory
103 [34-35], and impaired executive function [39]. Taken together, these studies have established
104 that risk for late-life AD, including risk that incorporates lifestyle factors, has a significant
105 impact on the brain health and cognition of middle-aged individuals who are presently
106 cognitively healthy.

107 As a multidimensional construct, lifestyle has a multipronged impact on cognition and the
108 brain. By contrast to aforementioned cardiovascular risk factors captured by the CAIDE
109 score, several lifestyle activities have been found to protect brain health and cognition in later
110 life. Factors, such as education and occupational complexity have been associated with
111 preservation of cognitive function in older adults [40] and reduced symptom severity in
112 Alzheimer's disease [4, 41-43], a phenomenon known as "cognitive resilience". These factors
113 are thought to explain why, in late-life Alzheimer's disease, the level of cognitive impairment
114 shows substantial variability even when accounting for key pathologies including $A\beta$ and
115 pathological tau [1, 44]. One prominent account of the biological mechanisms mediating the
116 relationship between stimulating lifestyle activities and cognitive resilience in AD [45-46]
117 suggests that environmental enrichment upregulates the noradrenergic system which
118 originated in the locus coeruleus, that otherwise depletes with age [47] and AD pathology
119 [10], leading to compensatory brain mechanisms for cognitive function.

120 While epidemiological evidence strongly suggests that education and occupation contribute
121 to cognitive resilience [48], there is a renewed interest in the additional contribution of other
122 activities undertaken in mid-life, given their potential modifiability. For example, Gow et al.
123 (2017) [49] and Chan et al. (2018) [40] used the Lifetime of Experiences Questionnaire
124 (LEQ) and found that physically, socially and intellectually stimulating lifestyle activities
125 undertaken in mid-life, independently of education, help to maintain late-life cognitive
126 performance in older adults, after adjusting for childhood cognitive ability [49]. However, it
127 is not known whether the protection conferred by lifestyle activities, other than education,
128 offsets the impact of AD risk in mid-life, or whether it builds up gradually over time with its
129 benefits viable only in late life or relative to established AD pathology. The answer to this
130 question is critical for identifying interventions that target modifiable factors for the
131 prevention of Alzheimer's disease from the earliest life stages.

132 To address this gap, we investigated the impact of interactions between three risk factors for
133 late-life AD (APOE ϵ 4 genotype, FH and CAIDE) with lifestyle activities on cognition,
134 independently of sex, age and years of education. These relationships were investigated in a
135 large cohort of cognitively healthy middle-aged individuals, assessed at baseline (N=206),
136 and at two years follow-up (N=174). To relate our findings to previous studies, we used the
137 LEQ [50], the same instrument as in aforementioned studies, to evaluate lifestyle activities
138 specific to mid-life, yielding two composite factors, (a) occupation and managerial
139 responsibility, and (b) physical, social and intellectual activities. Our hypothesis was that
140 there would be a significant association between mid-life lifestyle factors and cognitive
141 performance in domains already shown in this cohort to be affected by risk for late-life AD.

142 **Methods**

143 Participants

144 PREVENT is an ongoing longitudinal multi-site research programme based across the UK
145 and Ireland, seeking to identify early biomarkers of AD and elaborate on risk-mechanism
146 interactions for neurodegenerative diseases decades before the cardinal symptoms of
147 dementia emerge. Its protocol has been described in detail elsewhere [25]. In the first
148 PREVENT programme phase, participants were recruited at a single site, via the dementia
149 register database held at the West London National Health Service (NHS) Trust, of the UK
150 National Health Service, the Join Dementia Research website
151 (<https://www.joindementiaresearch.nihr.ac.uk/>), through public presentations, social media
152 and word of mouth. Procedures involving experiments on human subjects were done in
153 accord with the ethical standards of the Institutional Review Board of Imperial College
154 London and in accord with the Helsinki Declaration of 1975. Approval for the study was
155 granted by the NHS Research Ethics Committee London Camberwell St Giles. Consented
156 participants were seen at the West London NHS Trust, where they underwent a range of
157 clinical and cognitive assessments [25]. The cohort comprised cognitively healthy volunteers
158 aged 40-59 years. The West London dataset was used here to avail of both baseline and
159 follow-up testing data acquired for this cohort. 210 individuals (62 male; 148 female) were
160 tested at baseline, with 188 (89.5%) (55 male; 133 female) retained at 2 years follow-up
161 (Table 1).

162

163 Assessments

164 Risk factors

165 *APOE ϵ 4 Genotyping*

166 The process of APOE ϵ 4 allele identification is outlined in detail in Ritchie et al. (2017) [34].

167 In brief, genomic DNA was isolated from blood samples and APOE genotyping was

168 performed. All members of the research and clinical teams were blind to the result of APOE

169 genotyping. In this study, APOE ϵ 4 risk is determined by ≥ 1 APOE ϵ 4 allele. 75/210 carried

170 ≥ 1 APOE ϵ 4 allele (See Table 1).

171 *Family History*

172 FH was determined by a ‘yes’/‘no’ question during clinical visits, which asked participants

173 whether a parent had a diagnosis of dementia. Participants were asked to include the

174 dementia subtype if known, but answering ‘yes’ alone categorized a participant as FH+. The

175 answer ‘no’ likely captured both participants with no family history of dementia, and

176 participants for whom FH was unknown. In summary, participants were defined as FH+ if at

177 least one parent was diagnosed with dementia. Cases where the FH was unknown or partially

178 known were not recorded outside of the binary yes/no scoring. 103/210 were FH+.

179 *Cardiovascular Risk Factors, Aging, and Incidence of Dementia (CAIDE) score*

180 CAIDE is a composite scale of estimated future dementia risk based on mid-life

181 cardiovascular measures [51-52]. It takes into consideration the individual’s age, sex,

182 educational attainment, APOE ϵ 4 genotype, activity level, BMI, cholesterol and systolic

183 blood pressure [23] and is scored on a range of 0 – 18. A higher score indicates greater risk.

184 The CAIDE dementia risk score was calculated for each participant at baseline and follow-

185 up.

186

187 Cognitive testing

188 The Addenbrooke's Cognitive Assessment (ACE) III [53] was recorded at the follow-up

189 session, but not at the baseline. Subsequent analyses that focused on the subset of

190 assessments performed at both testing session did not include the ACE) III.

191 Cognitive function was assessed at baseline and follow up with the COGNITO

192 neuropsychological battery [54], designed to examine information processing across a wide

193 range of cognitive functions in adults of all ages and not restricted to those functions usually

194 implicated in dementia detection in the elderly. Tests are administered using a tactile screen

195 to capture information processing time as well as response accuracy and require about 40

196 minutes to complete. The tests, by order of presentation, are: reaction time; reading;

197 comprehension of phonemes, phrases, and syntax; focused and divided attention in both

198 visual and auditory modalities; visual working memory (visual tracking with auditory

199 interference); the Stroop test; immediate, delayed, and recognition trials for verbal recall

200 (name list); delayed recognition of spatial stimuli (faces); visuospatial associative learning;

201 visuospatial span; form perception; denomination of common objects; spatial reasoning;

202 copying of meaningful and meaningless figures; verbal fluency with se-mantic and phonetic

203 prompts; immediate recall of a narrative; immediate recall of a description of the relative

204 position of objects; vocabulary; implicit memory (recognition of new and previously learned

205 material).

206 The COGNITO tests are designed to test several aspects of cognition, including attention

207 (task: visual attention), memory (tasks: narrative recall, description recall, implicit memory,

208 name-face association, working memory), language (tasks: phoneme comprehension, verbal

209 fluency) and visuospatial abilities (task: geometric figure recognition) [54-55]. Based on

210 previous studies [54-55], 11 summary variables from the COGNITO battery capturing the
211 above functions were used here [for a list see Supporting Information (SI)].

212 Additionally, we used the Visual Short-Term Memory Binding task (VSTMBT) [56], a
213 computer-based task that assesses visual short-term memory binding of single features, e.g.,
214 complex shape or color combinations, or feature conjunctions, e.g., shape and color
215 combinations. In the single feature condition, participants must identify whether the test
216 stimuli (three random 6-sided polygons) are the “same” as or “different” to the studied
217 stimuli in terms of shape (shape only) or color (color only). In the binding condition,
218 participants are required to correctly identify if both the shape and color of the test stimuli
219 match studied stimuli. Two summary variables from the VSTMBT were the percentage of
220 correctly recognized items from the two conditions.

221

222 Measurement of lifestyle activities

223 The Lifetime of Experiences Questionnaire (LEQ) [50], designed to take a lifespan approach
224 to the measurement of cognitive resilience [57-59] and mental activity, measures engagement
225 in a broad range of lifestyle activities across three stages of life: young adulthood (13-29
226 years), mid-life (30-64 years) and late life (65 years onwards). Therefore, the LEQ is
227 preferable for looking at a mid-life cohort compared to other scales that capture dementia-
228 specific risk related to modifiable lifestyle factors (e.g., LIBRA [60]). The LEQ comprises
229 sub-scores capturing “specific” activities, reflecting the primary activity undertaken in each
230 life stage and “non-specific” activities, reflecting engagement in physical, social and
231 intellectual activities in any stage. For the purpose of this paper, we define mid-life ‘lifestyle’
232 as all the activities captured by the LEQ (below).

233

234 *Mid-life specific score*

235 The mid-life specific component score centers on occupation and comprises two sub-scores.
236 For the first occupational sub-score, participants were asked to record their primary
237 occupation in each 5-year interval from age 30 to age at assessment. Each reported
238 occupation was scored according to the International Standard Classification of Occupations
239 (ISCO 08) guidelines (<https://www.ilo.org/public/english/bureau/stat/isco/isco08/>), and
240 scores were inverted and summed. The second sub-score is a measure of the managerial
241 responsibility associated with reported occupations. If participants indicated that they were
242 employed in a managerial capacity, the number of people that they oversaw in four of their
243 reported occupations was documented. Managerial responsibility was scored as follows; 0
244 people = 8, 1-5 people = 16, 5-10 people = 24 and 10+ people = 32. The highest score is
245 recorded as the managerial responsibility sub-score. The occupational history and managerial
246 sub-scores were summed and multiplied by a normalization factor of 0.25. Normalization
247 ensures that the mid-life specific and non-specific scores have comparable mean values [50].

248

249 *Mid-life non-specific score*

250 The non-specific score assesses frequency of engagement in 7 activities, capturing those of a
251 physically, socially and intellectually stimulating nature, scored on a 5-point Likert scale of
252 frequency (never, less than monthly, monthly, fortnightly, weekly, daily). Scores range from
253 0 – 35, with higher scores reflecting more frequent engagement in such activities. The items
254 included in the scale are socializing with family or friends, practicing a musical instrument,
255 practicing an artistic pastime, engagement in physical activity that is mildly, moderately, or
256 vigorously energetic, reading, practicing a second language and travel. The travel item asks
257 participants if they have visited any of a list of continents between the ages of 30-54.

258 Responses were scored on a 5-point scale as follows; none, 1-2 regions, 3-4 regions, 5
259 regions, 6-7 regions, all regions.

260

261 Statistical analyses

262 To reduce the number of multiple comparisons between the cognitive tests, given the
263 multitude of cognitive assessments obtained for this cohort (13 summary variables, see SI and
264 Table S1), in an independent study of this dataset [35], three composite cognitive components
265 were extracted from the above cognitive assessments, by using rotated principal component
266 analysis (rPCA) (Figure S1). In subsequent analyses, we used these cognitive components,
267 rather than the individual tests to measure the impact of risk and protective lifestyle factors
268 on cognition.

269 At baseline, the three components were: 1) C1: verbal, spatial and relational memory; 2) C2:
270 working and short-term (single-feature) memory; 3) C3: verbal and visuospatial functions,
271 and short-term (conjunctive) memory (Figure S1 A). Higher scores in C1 and C2 reflected
272 better performance, whereas higher scores in C3 reflected poorer performance. For ease of
273 visualization and comparability to C1 and C2, values of C3 were recoded with reversed sign.

274 The highest loading tasks and their weights for each component differed slightly for the
275 cross-sectional and longitudinal data. There was high similarity between baseline and follow-
276 up for C1 ($\phi = 0.90$), and C3 ($\phi = 0.76$), with relatively low similarity for C2 ($\phi = 0.40$)
277 (Figure S1 B). Although C1 and C3 had relatively high similarity across time, the
278 longitudinal changes in these components could not be quantified by direct comparison,
279 because they captured different cognitive functions at each time-point and any longitudinal
280 change would be hard to interpret.

281 We used the Statistical Package for Social Sciences (SPSS V.26) and R software for all
282 statistical analyses. The normality of the data was assessed by combining the visualization of
283 a quantile-quantile plot and the Shapiro–Wilk test. Demographic and clinical information of
284 the study cohort was analyzed across risk groups using chi-square (χ^2 tests) for categorical
285 variables and Mann Whitney U tests for continuous (discrete) variables, given that they were
286 not normally distributed in this cohort. Subsequently, we used hierarchical regression models
287 to look at the contribution of mid-life lifestyle factors (LEQ specific and non-specific scores)
288 risk factors (APOE ϵ 4 genotype and FH) and of their interactions on cognitive performance,
289 at baseline and follow-up. The effect of APOE ϵ 4 and CAIDE risk factors was modelled
290 independently, in order to avoid modelling the variance associated with APOE
291 genotype in the same model twice. In each case, dependent variables were the
292 aforementioned composite cognitive components, each assessed in a separate model.

293 The variance of some parts of physical activity is accounted for twice in the model, in the
294 CAIDE score and in the non-specific LEQ factor, resulting in weakening of its statistical
295 contribution that can be captured by the lifestyle factor. Therefore, any effect of physical
296 activity that can be captured by the lifestyle factor (independent variable) in the same model
297 as CAIDE (independent variable), can only provide a conservative estimate of the
298 contribution of physical activity to the dependent variable of cognitive performance.

299

300 As aforementioned, the baseline and follow-up datasets were analyzed independently, due to
301 the slightly differing cognitive domains for each visit. Although the two datasets were not
302 independent, we considered each of them in its own right, because during 2 years, a
303 proportion of our participants may have had substantial brain health changes that are yet
304 subthreshold to clinical manifestations. Therefore, the follow-up dataset has the potential to

305 reveal the impact of age on variables of interest. Corrections for multiple comparisons were
306 performed across all analyses.

307 To avoid multicollinearity, we mean centered continuous variables (specific and non-specific
308 scores). Age, sex and years of education were included as covariates in hierarchical models.
309 A significant interaction effect between a risk and a lifestyle factor would indicate that the
310 effect of the lifestyle factor on cognitive performance differs across levels/values of the risk
311 factor. For any observed interactions, we plotted the regression of the lifestyle factor on
312 cognitive performance for each level/value of the risk factor [61], to interpret the effect. We
313 then tested the significance of the slopes of the simple regression lines, to investigate in
314 which level/value of the risk factor we found an effect of lifestyle on cognitive performance.

315 **Results**

316 Demographic characteristics

317 In the first PREVENT study phase, 210 participants were recruited from a single site. All 210
318 completed several cognitive tests and the LEQ questionnaire. 188 were also assessed at the
319 follow up, two years later. At baseline, 2 participants were missing information relating to
320 their APOE ϵ 4 genotype, with a further 2 missing cognitive data. The final baseline cohort
321 that could be used for the analyses was $N = 206$. At follow-up, 12 participants were missing
322 cognitive data, alongside the 2 participants who were missing APOE ϵ 4 genotype data.
323 Therefore, the final follow-up cohort was $N = 174$. Mild cognitive impairment and dementia
324 were ruled out based on detailed clinical assessment at baseline and follow-up. Please see the
325 Supplementary Information and Table S1 for a list of all the outcome variables collected at
326 baseline and follow-up.

327 Demographic specifications of the cohort at baseline and follow-up, stratified by APOE ϵ 4
328 genotype and family history of dementia, are shown in Table 1. There were no significant
329 differences in age, sex or years of education between the groups. As expected, APOE ϵ 4
330 allele genotype was more frequently found in the FH+ than FH- group at baseline ($p = 0.01$)
331 and follow up ($p = 0.02$). CAIDE scores (including APOE status) were significantly higher
332 for the FH+ than FH- group at baseline ($p = 0.03$) and follow up ($p = 0.003$). Naturally,
333 CAIDE scores including APOE status were significantly higher for the APOE ϵ 4+ than
334 APOE ϵ 4- group at baseline ($p = 0.0003$) and follow up ($p = 0.0002$), but when APOE status
335 was excluded the CAIDE scores did not differ between the two groups (Table 1).

336

337

Table 1 about here please

338

339 Verbal, Spatial and Relational memory

340 At baseline, a hierarchical regression model with lifestyle factors, i.e., the specific and non-
341 specific LEQ scores, risk factors (APOE ϵ 4 and FH), and age, sex and years of education as
342 covariates, and verbal, spatial and relational memory as the dependent variable was
343 significant overall [$F(7, 198) = 5.84, R^2 = 0.17, p < 0.0001$] (Supplementary Table 2a), and
344 showed a significant positive association between verbal, spatial and relational memory and
345 education [β (SE) = 0.09 (0.02), $p < 0.0001$] (Figure 1a). Similarly, at follow up the model's
346 performance was significant [$F(7, 166) = 5.52, R^2 = 0.19, p < 0.0001$], and there was a
347 significant positive association between verbal, spatial and relational memory and education
348 [β (SE) = 0.10 (0.02), $p < 0.0001$] (Figure 1b). Higher education values were significantly
349 associated with higher performance at both timepoints. The inclusion of risk by lifestyle
350 interaction terms (FH \times specific score, FH \times non-specific score, APOE ϵ 4 \times specific score,
351 APOE ϵ 4 \times non-specific score) into the hierarchical regression model (Supplementary Table
352 2b) did not show any significant associations between lifestyle \times risk interaction terms and
353 cognitive performance, at baseline or follow-up.

354

355 *Figure 1 about here please*

356

357 The hierarchical regression models with lifestyle factors and CAIDE as independent
358 variables, and verbal, spatial and relational memory as the dependent was significant at
359 baseline [$F(3, 202) = 3.11, R^2 = 0.04, p = 0.03$] and at follow-up [$F(3, 166) = 3.52, R^2 =$
360 $0.04, p = 0.02$] (Supplementary Table 2c). At both timepoints, we found a significant positive
361 association between the non-specific LEQ factor and verbal, spatial and relational memory
362 (baseline: [β (SE) = 0.04 (0.02), $p = 0.02$], figure 2a) and (follow up: [β (SE) = 0.07 (0.02), p

363 = 0.002], figure 2b). More frequent engagement in physically, socially and intellectually
364 stimulating activities was associated with better verbal, spatial and relational memory. This
365 association was independent of CAIDE and therefore of age, sex and years of education, as
366 included in this score. The inclusion of CAIDE by lifestyle interaction terms (CAIDE ×
367 specific score, CAIDE × non-specific score) into the hierarchical regression model
368 (Supplementary Table 2d) did not show any significant associations between lifestyle x risk
369 interaction terms and cognitive performance, at baseline or follow-up.

370

371 *Figure 2 about here please*

372

373 Working and Short-Term (Single-Feature) Memory

374 Hierarchical regression analyses showed no significant associations of any of the independent
375 variables and performance on the working and short-term (single-feature) memory, at
376 baseline or follow up (Supplementary Table 3a, 3c) Furthermore, no significant associations
377 with interaction terms were observed at either timepoint (Supplementary Table 3b, 3d).

378

379 Verbal and Visuospatial Functions, and Short-Term (Conjunctive) Memory

380 At baseline, the hierarchical regression model was significant [$F(7, 198) = 2.39$, $R^2 = 0.08$, p
381 $= 0.02$], and showed a significant negative association between verbal and visuospatial
382 function and short-term (conjunctive) memory with age [β (SE) = -0.04 (0.01), $p = 0.006$]
383 (Supplementary Table 4a). Higher age was associated with poorer performance. At follow-
384 up, there were no significant associations between the main independent variables with verbal
385 and visuospatial function and short-term (conjunctive) memory. The inclusion of risk by
386 lifestyle interaction terms in the hierarchical model revealed a significant association between

387 the non-specific LEQ score x FH interaction term and cognitive performance [β (SE) = 0.11
388 (0.05), $p = 0.01$] (Supplementary Table 4b). To interpret this interaction, we investigated the
389 relationship between cognitive performance and the non-specific LEQ score for the FH+ and
390 FH- groups independently (Figure 3). We found a significant negative relationship between
391 non-specific lifestyle activities and cognition in the FH+ group [β (SE)= 0.08 (0.03), $p =$
392 0.02), that was independent of age, sex, or years of education. We did not observe a
393 relationship between non-specific lifestyle activities and cognition in the FH- group [β (SE) =
394 -0.03 (0.03), $p = 0.34$]. These results suggested that for individuals with positive family
395 history, more frequent engagement in the non-specific LEQ factor — namely physically,
396 socially and intellectually engaging activities — was associated with better performance in
397 verbal and visuospatial function and short-term (conjunctive) memory. Finally, we also
398 observed trend associations between cognitive performance and the specific LEQ factor score
399 x FH interaction term [β (SE) = -0.07 (0.04), $p = 0.06$]. This association, while suggestive of
400 a role for occupational complexity on cognition, stratified by family history risk group, is
401 weak and needs to be investigated further in future studies. Additionally, as previously
402 reported [35] we observed a significant negative association between CAIDE and verbal and
403 visuospatial functions and short-term (conjunctive) memory at baseline (Supplementary
404 Table 4c). There were no associations between interactions of CAIDE x lifestyle and
405 cognition at either baseline or follow up (Supplementary Table 4d).

406

407

Figure 3 about here please

408

409 Conclusion

410 It is now acknowledged that Alzheimer's Disease processes are present decades before the
411 onset of clinical symptoms [2, 62, but, to date, it has remained unknown whether lifestyle
412 factors can already protect against these early AD processes in mid-life. We asked whether
413 these modifiable lifestyle activities impact cognition in middle-aged individuals who are
414 cognitively healthy but at risk for late life AD. Lifestyle activities significantly impacted
415 cognition in mid-life. Individuals with greater educational attainment showed stronger
416 cognition in a composite dimension capturing verbal, spatial and relational memory. This
417 result is consistent with a previous study [34] of this cohort showing that visuospatial abilities
418 were positively associated with education. It is also consistent with epidemiological studies
419 on older adults showing that education contributes to cognitive resilience in older life [48].
420 Our cohort is highly educated, with approximately 30% reaching a post-graduate
421 qualification [34]. As the LEQ education measure captures total years of education, the effect
422 of education we observed, reflects long-term effects set in motion from early life and young
423 adulthood.

424 The key question in this study, however, was to investigate any additional contribution of
425 activities undertaken in mid-life, independently of education. The first novel finding of this
426 study was that more frequent engagement in physically, socially and intellectually stimulating
427 activities in mid-life was associated with stronger cognition in a composite dimension
428 capturing verbal, spatial and relational memory, both at baseline and at follow-up. This effect
429 was independent of sex, age, years of education and cardiovascular factors captured by the
430 CAIDE score. The second novel finding was that physically, socially and intellectually
431 stimulating activities undertaken in mid-life had a significant effect in the cognition of
432 middle-aged individuals at risk for late-life AD. Specifically, higher engagement in these

433 activities was associated with significantly stronger cognition in another composite
434 dimension, capturing verbal and visuospatial functions and short-term (conjunctive) memory
435 in cognitively healthy individuals, who were at risk for late life AD though family history of
436 dementia, at follow up. Importantly, this effect was independent of age, sex, and years of
437 education. The presence of this effect in the follow-up but not the baseline dataset is likely
438 due to the older age of the cohort at follow-up. Short-term (conjunctive) memory functions
439 have been found impaired in the pre-symptomatic stages of AD [56]. Additionally, impaired
440 visuospatial function is one of the earliest cognitive deficits observed in AD [63-64] and has
441 previously been linked to increased AD risk in this cohort [34-35]. In similarly cognitively
442 healthy, but older (> 65 years) North American cohorts [65-66], changes in cerebrospinal
443 fluid biomarkers related to inflammation have been associated with changes in visuospatial
444 cognitive performance, thereby suggesting a biochemically-mediated effect of early
445 pathology in presymptomatic individuals.

446 Taken together, our results suggest that stimulating lifestyle activities may boost cognitive
447 functions that are very vulnerable to AD risk and early AD neuropathology [56, 63-64].
448 However, we caution that the interpretability of the effect of lifestyle activities on each
449 individual function is limited by their composite assessment in this study and requires
450 individuation in future studies with a longer longitudinal follow-up window. Physically,
451 socially and intellectually stimulating mid-life activities have been shown to influence late-
452 life cognition, suggesting that they contribute to the cognitive resilience that mitigates the
453 effect of age-related cognitive decline and AD neuropathology [40, 49]. Our finding advances
454 understanding by showing that engagement with these activities contributes to cognitive
455 resilience to risk of AD, or even incipient AD neuropathology, from mid-life, in individuals
456 who are presently cognitively healthy.

457 Family history of dementia is a well-established risk factor [16, 19-20], independent of the
458 genetic risk bestowed by APOE ϵ 4 genotype, that captures both genetic and environmental
459 risk influences. For example, an individual who has one or more parent with dementia, may,
460 independently to the presence of the APOE ϵ 4 genotype, be exposed to negative
461 environmental influences that contribute to neuropathology, including increased stress [67],
462 caregiver burden [68-69] and reduced participation in enriching environments due to
463 caregiving duties [70]. Therefore, alongside contributing to cognitive resilience, enhanced
464 engagement with physically, socially and intellectually stimulating activities may positively
465 impact individuals with a family history of dementia by counteracting these negative
466 environmental influences.

467 What might be the mechanism by which stimulating activities impact cognition in midlife?
468 Models of AD disease delineated by neuropathological staging [9] place the locus coeruleus,
469 a small nucleus in the pontine tegmentum region of the brainstem, at the pathogenesis of AD
470 [10-11, 71]. The LC is responsible for the production of neurotransmitter noradrenaline (NA)
471 [72], a major driver of the brain's arousal system, which strongly modulates high-order
472 cognition. Novelty provides a key trigger for arousal, and, thus, the LC-NA activity occurs
473 strongly in response to novel stimuli. Therefore, stimulating activities upregulate the LC and
474 may protect it from early neurodegeneration due to pTau deposition. Furthermore, as the
475 brain site of noradrenaline, the LC is key to the protective effect of lifestyle factors on the
476 whole brain. Studies suggests that environmental enrichment, through activities such as those
477 measured in this study, upregulates the noradrenergic system, which otherwise depletes with
478 age [47] and AD pathology [10], leading to compensatory brain mechanisms for cognitive
479 function, such as the strengthening of the fronto-parietal brain and other large-scale brain
480 networks [45-46].

481 In summary, our findings suggest that modifiable lifestyle activities may offset AD risk-
482 related cognitive decrements in mid-life and support the targeting of certain modifiable
483 lifestyle activities for the prevention of Alzheimer’s Disease, especially in those with a family
484 history. These activities include socializing with family or friends, practicing a musical
485 instrument, practicing an artistic pastime, engagement in energetic physical activities,
486 reading, practicing a second language and travel. Given the apparent lifestyle contributions
487 both as risk and protective factors of dementia [4], a healthy lifestyle may be the individual’s
488 current best defense against sporadic late onset AD. The modifiability of the lifestyle
489 activities identified here renders them promising cost-effective candidates for intervention
490 and prevention strategies from early life. These activities may be particularly significant for
491 non-pharmacological interventions for AD in low and middle-income countries (LMIC),
492 where barriers to education are more prevalent than in high income countries [4].

493

494 Methodological considerations

495 As education is strongly positively linked to IQ [73] and our cohort was highly educated, the
496 question of reverse causation arises [40, 49, 74]. This points to the possibility that cognitive
497 abilities may determine engagement in stimulating activities, rather than the inverse.

498 However, the effect on mid-life verbal and visuospatial functions, and short-term
499 (conjunctive) memory is independent of the total years of education, which shows that
500 education does not directly drive this effect. Furthermore, we found that mid-life lifestyle
501 activities were associated with improved cognitive performance only in the family history
502 positive group, which is not, at least not prima facie, more educated than the family history
503 negative group. Thus, this effect is likely independent of any indirect effects of education.

504 The use of composite cognitive domains that capture slightly different functions in the two
505 assessment points [35] prevents investigation of the impact of lifestyle on cognitive changes
506 over time in this study. Nevertheless, previous studies from this cohort have shown only
507 subtle changes over the two-year period [75-76], possibly due to the relatively young age
508 range of the sample and the short follow up window [34, 55]. Therefore, future studies that
509 follow this cohort over a longer period and test hypotheses informed by the previous study
510 waves are needed to determine the longitudinal impact of lifestyle activities in cognitively
511 healthy middle-aged individuals at risk for late life AD.

512 It is worth noting that we found no evidence that lifestyle factors can mitigate the impact of
513 the CAIDE risk, or for interactions between CAIDE, lifestyle and cognition, as reported in
514 some previous studies (see Kivipelto et al. 2018 [77] for a review). Unlike the CAIDE score
515 (including systolic blood pressure, BMI, total cholesterol, physical activity), the lifestyle
516 factors captured by our instrument (the LEQ) are not primarily related to cardiovascular
517 wellbeing (with the exception of exercise, 1/9 items), and therefore not likely to impact
518 greatly on cardiovascular health in this relatively young cohort (i.e., 40–59 years). By
519 contrast, the studies reviewed by Kivipelto et al. (2018) include older populations (> 60–70
520 years), where cardiovascular factors are more prevalent drivers of health vulnerabilities, and
521 furthermore those studies, unlike the present one, had a strong focus on cardiovascular health,
522 including nutritional guidance, exercise and monitoring and management of metabolic and
523 vascular risk factors.

524

525

526

527 Acknowledgement

528 F.D. was funded by the Provost PhD Award Scheme from Trinity College Dublin, to L.N.

529 L.N. was also funded by a L'Oréal-UNESCO for Women In Science International Rising

530 Talent Award, the Wellcome Trust Institutional Strategic Support grant, and the Global Brain

531 Health Institute Project Grant.

532 The PREVENT-Dementia study is supported by the UK Alzheimer's Society (grant numbers

533 178 and 264), the US Alzheimer's Association (grant number TriBEKa-17-519007) and

534 philanthropic donations.

535 We thank all PREVENT-Dementia participants for their enthusiastic participation in this

536 study. We also thank the Research Delivery service at West London NHS Trust and the

537 Wolfson Clinical Imaging Facility at Imperial College London for their support in running

538 the study.

539

540 Conflict of interest

541 The authors declare no conflict of interest.

542 References

- 543 [1] Jack, C. R., Jr, Knopman, D. S., Jagust, W. J., Petersen, R. C., Weiner, M. W., Aisen, P.
544 S., Shaw, L. M., Vemuri, P., Wiste, H. J., Weigand, S. D., Lesnick, T. G., Pankratz, V. S.,
545 Donohue, M. C., & Trojanowski, J. Q. (2013). Tracking pathophysiological processes in
546 Alzheimer's disease: an updated hypothetical model of dynamic biomarkers. *The Lancet*.
547 *Neurology*, 12(2), 207–216. [https://doi.org/10.1016/S1474-4422\(12\)70291-0](https://doi.org/10.1016/S1474-4422(12)70291-0)
- 548 [2] Ritchie, K., Ritchie, C. W., Yaffe, K., Skoog, I., & Scarmeas, N. (2015). Is late-onset
549 Alzheimer's disease really a disease of midlife?. *Alzheimer's & dementia (New York, N.*
550 *Y.)*, 1(2), 122–130. <https://doi.org/10.1016/j.trci.2015.06.004>
- 551 [3] Ritchie, C.W., Waymont, J.M.J., Pennington, C. *et al.* The Scottish Brain Health Service
552 Model: Rationale and Scientific Basis for a National Care Pathway of Brain Health Services
553 in Scotland. *J Prev Alzheimers Dis* (2021). <https://doi.org/10.14283/jpad.2021.63>
- 554 [4] Livingston, G., Huntley, J., Sommerlad, A., Ames, D., Ballard, C., Banerjee, S., Brayne,
555 C., Burns, A., Cohen-Mansfield, J., Cooper, C., Costafreda, S. G., Dias, A., Fox, N., Gitlin,
556 L. N., Howard, R., Kales, H. C., Kivimäki, M., Larson, E. B., Ogunniyi, A., Orgeta, V., ...
557 Mukadam, N. (2020). Dementia prevention, intervention, and care: 2020 report of the Lancet
558 . *Lancet (London, England)*, 396(10248), 413–446. [https://doi.org/10.1016/S0140-](https://doi.org/10.1016/S0140-6736(20)30367-6)
559 [6736\(20\)30367-6](https://doi.org/10.1016/S0140-6736(20)30367-6)
- 560 [5] Irwin, K., Sexton, C., Daniel, T., Lawlor, B., & Naci, L. (2018). Healthy Aging and
561 Dementia: Two Roads Diverging in Midlife?. *Frontiers in aging neuroscience*, 10, 275.
562 <https://doi.org/10.3389/fnagi.2018.00275>
- 563 [6] Lachman, M. E., Teshale, S., & Agrigoroaei, S. (2015). Midlife as a Pivotal Period in the
564 Life Course: Balancing Growth and Decline at the Crossroads of Youth and Old

565 Age. *International journal of behavioral development*, 39(1), 20–31.

566 <https://doi.org/10.1177/0165025414533223>

567 [7] Gottesman, R. F., Schneider, A. L., Zhou, Y., Coresh, J., Green, E., Gupta, N., Knopman,

568 D. S., Mintz, A., Rahmim, A., Sharrett, A. R., Wagenknecht, L. E., Wong, D. F., & Mosley,

569 T. H. (2017). Association Between Midlife Vascular Risk Factors and Estimated Brain

570 Amyloid Deposition. *JAMA*, 317(14), 1443–1450. <https://doi.org/10.1001/jama.2017.3090>

571 [8] Braak, H., Thal, D. R., Ghebremedhin, E., & Del Tredici, K. (2011). Stages of the

572 pathologic process in Alzheimer disease: age categories from 1 to 100 years. *Journal of*

573 *neuropathology and experimental neurology*, 70(11), 960–969.

574 <https://doi.org/10.1097/NEN.0b013e318232a379>

575 [9] Braak, H., & Braak, E. (1991). Neuropathological staging of Alzheimer-related changes.

576 *Acta neuropathologica*, 82(4), 239–259. <https://doi.org/10.1007/BF00308809>

577 [10] Jacobs, H., Becker, J. A., Kwong, K., Engels-Domínguez, N., Prokopiou, P. C., Papp, K.

578 V., Properzi, M., Hampton, O. L., d'Oleire Uquillas, F., Sanchez, J. S., Rentz, D. M., El

579 Fakhri, G., Normandin, M. D., Price, J. C., Bennett, D. A., Sperling, R. A., & Johnson, K. A.

580 (2021). In vivo and neuropathology data support locus coeruleus integrity as indicator of

581 Alzheimer's disease pathology and cognitive decline. *Science translational medicine*,

582 13(612), eabj2511. <https://doi.org/10.1126/scitranslmed.abj2511>

583 [11] Arnsten, A., Datta, D., Del Tredici, K., & Braak, H. (2021). Hypothesis: Tau pathology

584 is an initiating factor in sporadic Alzheimer's disease. *Alzheimer's & dementia : the journal of*

585 *the Alzheimer's Association*, 17(1), 115–124. <https://doi.org/10.1002/alz.12192>

- 586 [12] Kametani, F., & Hasegawa, M. (2018). Reconsideration of Amyloid Hypothesis and Tau
587 Hypothesis in Alzheimer's Disease. *Frontiers in neuroscience*, *12*, 25.
588 <https://doi.org/10.3389/fnins.2018.00025>
- 589 [13] Braak, H., & Del Tredici, K. (2015). Neuroanatomy and pathology of sporadic
590 Alzheimer's disease. *Advances in anatomy, embryology, and cell biology*, *215*, 1–162.
- 591 [14] La Joie, R., Ayakta, N., Seeley, W. W., Borys, E., Boxer, A. L., DeCarli, C., Doré, V.,
592 Grinberg, L. T., Huang, E., Hwang, J. H., Ikonomic, M. D., Jack, C., Jr, Jagust, W. J., Jin,
593 L. W., Klunk, W. E., Kofler, J., Lesman-Segev, O. H., Lockhart, S. N., Lowe, V. J., Masters,
594 C. L., ... Rabinovici, G. D. (2019). Multisite study of the relationships between antemortem
595 [11C]PIB-PET Centiloid values and postmortem measures of Alzheimer's disease
596 neuropathology. *Alzheimer's & dementia : the journal of the Alzheimer's Association*, *15*(2),
597 205–216. <https://doi.org/10.1016/j.jalz.2018.09.001>
- 598 [15] Giannakopoulos, P., Herrmann, F. R., Bussière, T., Bouras, C., Kövari, E., Perl, D. P.,
599 Morrison, J. H., Gold, G., & Hof, P. R. (2003). Tangle and neuron numbers, but not amyloid
600 load, predict cognitive status in Alzheimer's disease. *Neurology*, *60*(9), 1495–1500.
601 <https://doi.org/10.1212/01.wnl.0000063311.58879.01>
- 602 [16] Donix, M., Small, G. W., & Bookheimer, S. Y. (2012). Family history and APOE-4
603 genetic risk in Alzheimer's disease. *Neuropsychology review*, *22*(3), 298–309.
604 <https://doi.org/10.1007/s11065-012-9193-2>
- 605 [17] Liu, C. C., Liu, C. C., Kanekiyo, T., Xu, H., & Bu, G. (2013). Apolipoprotein E and
606 Alzheimer disease: risk, mechanisms and therapy. *Nature reviews. Neurology*, *9*(2), 106–118.
607 <https://doi.org/10.1038/nrneurol.2012.263>

- 608 [18] Lambert, J. C., Ibrahim-Verbaas, C. A., Harold, D., Naj, A. C., Sims, R., Bellenguez, C.,
609 DeStafano, A. L., Bis, J. C., Beecham, G. W., Grenier-Boley, B., Russo, G., Thorton-Wells,
610 T. A., Jones, N., Smith, A. V., Chouraki, V., Thomas, C., Ikram, M. A., Zelenika, D.,
611 Vardarajan, B. N., Kamatani, Y., ... Amouyel, P. (2013). Meta-analysis of 74,046 individuals
612 identifies 11 new susceptibility loci for Alzheimer's disease. *Nature genetics*, *45*(12), 1452–
613 1458. <https://doi.org/10.1038/ng.2802>
- 614 [19] Berti, V., Mosconi, L., Glodzik, L., Li, Y., Murray, J., De Santi, S., Pupi, A., Tsui, W.,
615 & De Leon, M. J. (2011). Structural brain changes in normal individuals with a maternal
616 history of Alzheimer's. *Neurobiology of aging*, *32*(12), 2325.e17–2325.e2.325E26.
617 <https://doi.org/10.1016/j.neurobiolaging.2011.01.001>
- 618 [20] Scarabino, D., Gambina, G., Broggio, E., Pelliccia, F., & Corbo, R. M. (2016). Influence
619 of family history of dementia in the development and progression of late-onset Alzheimer's
620 disease. *American Journal of Medical Genetics Part B: Neuropsychiatric Genetics*, *171*(2),
621 250-256. <https://doi.org/10.1002/ajmg.b.32399>
- 622 [21] Barnes, D. E., Beiser, A. S., Lee, A., Langa, K. M., Koyama, A., Preis, S. R., Neuhaus,
623 J., McCammon, R. J., Yaffe, K., Seshadri, S., Haan, M. N., & Weir, D. R. (2014).
624 Development and validation of a brief dementia screening indicator for primary
625 care. *Alzheimer's & dementia : the journal of the Alzheimer's Association*, *10*(6), 656–665.e1.
626 <https://doi.org/10.1016/j.jalz.2013.11.006>
- 627 [22] Deckers, K., van Boxtel, M. P., Schiepers, O. J., de Vugt, M., Muñoz Sánchez, J. L.,
628 Anstey, K. J., Brayne, C., Dartigues, J. F., Engedal, K., Kivipelto, M., Ritchie, K., Starr, J.
629 M., Yaffe, K., Irving, K., Verhey, F. R., & Köhler, S. (2015). Target risk factors for dementia
630 prevention: a systematic review and Delphi consensus study on the evidence from

631 observational studies. *International journal of geriatric psychiatry*, 30(3), 234–246.

632 <https://doi.org/10.1002/gps.4245>

633 [23] Kivipelto, M., Ngandu, T., Laatikainen, T., Winblad, B., Soininen, H., & Tuomilehto, J.

634 (2006). Risk score for the prediction of dementia risk in 20 years among middle aged people:

635 a longitudinal, population-based study. *The Lancet. Neurology*, 5(9), 735–741.

636 [https://doi.org/10.1016/S1474-4422\(06\)70537-3](https://doi.org/10.1016/S1474-4422(06)70537-3)

637 [24] Exalto, L. G., Quesenberry, C. P., Barnes, D., Kivipelto, M., Biessels, G. J., & Whitmer,

638 R. A. (2014). Midlife risk score for the prediction of dementia four decades later. *Alzheimer's*

639 *& dementia : the journal of the Alzheimer's Association*, 10(5), 562–570.

640 <https://doi.org/10.1016/j.jalz.2013.05.1772>

641 [25] Ritchie, C. W., & Ritchie, K. (2012). The PREVENT study: a prospective cohort study

642 to identify mid-life biomarkers of late-onset Alzheimer's disease. *BMJ open*, 2(6), e001893.

643 <https://doi.org/10.1136/bmjopen-2012-001893>

644 [26] Dounavi, M. E., Mak, E., Wells, K., Ritchie, K., Ritchie, C. W., Su, L., & O'Brien, J. T.

645 (2020). Volumetric alterations in the hippocampal subfields of subjects at increased risk of

646 dementia. *Neurobiology of aging*, 91, 36-44.

647 <https://doi.org/10.1016/j.neurobiolaging.2020.03.006>

648 [27] Mak, E., Dounavi, M. E., Low, A., Carter, S. F., McKiernan, E., Williams, G. B., ... & T

649 O'Brien, J. (2021). Proximity to dementia onset and multi-modal neuroimaging changes: The

650 prevent-dementia study. *NeuroImage*, 229, 117749.

651 <https://doi.org/10.1016/j.neuroimage.2021.117749>

652 [28] McKiernan, E. F., Mak, E., Dounavi, M. E., Wells, K., Ritchie, C., Williams, G., ... &

653 O'Brien, J. (2020). Regional hyperperfusion in cognitively normal APOE ε4 allele carriers in

- 654 mid-life: analysis of ASL pilot data from the PREVENT-Dementia cohort. *Journal of*
655 *Neurology, Neurosurgery & Psychiatry*, 91(8), 861-866. [https://doi.org/10.1136/jnnp-2020-](https://doi.org/10.1136/jnnp-2020-322924)
656 [322924](https://doi.org/10.1136/jnnp-2020-322924)
- 657 [29] Cacciaglia, R., Molinuevo, J. L., Falcón, C., Brugulat-Serrat, A., Sánchez-Benavides, G.,
658 Gramunt, N., Esteller, M., Morán, S., Minguillón, C., Fauria, K., Gispert, J. D., & ALFA
659 study (2018). Effects of APOE-ε4 allele load on brain morphology in a cohort of middle-aged
660 healthy individuals with enriched genetic risk for Alzheimer's disease. *Alzheimer's &*
661 *dementia : the journal of the Alzheimer's Association*, 14(7), 902–912.
662 <https://doi.org/10.1016/j.jalz.2018.01.016>
- 663 [30] Fennema-Notestine, C., Panizzon, M. S., Thompson, W. R., Chen, C. H., Eyler, L. T.,
664 Fischl, B., Franz, C. E., Grant, M. D., Jak, A. J., Jernigan, T. L., Lyons, M. J., Neale, M. C.,
665 Seidman, L. J., Tsuang, M. T., Xian, H., Dale, A. M., & Kremen, W. S. (2011). Presence of
666 ApoE ε4 allele associated with thinner frontal cortex in middle age. *Journal of Alzheimer's*
667 *disease : JAD*, 26 Suppl 3(Suppl 3), 49–60. <https://doi.org/10.3233/JAD-2011-0002>
- 668 [31] McKeever, A., Paris, A. F., Cullen, J., Hayes, L., Ritchie, C. W., Ritchie, K., ... & Su, L.
669 (2020). Hippocampal Subfield volumes in middle-aged adults at risk of dementia. *Journal of*
670 *Alzheimer's Disease*, 75(4), 1211-1218. <https://doi.org/10.3233/JAD-200238>
- 671 [32] Liu, X., Dounavi, M. E., Ritchie, K., Wells, K., Ritchie, C. W., Su, L., Muniz-Terrera,
672 G., & O'Brien, J. T. (2021). Higher midlife CAIDE score is associated with increased brain
673 atrophy in a cohort of cognitively healthy middle-aged individuals. *Journal of*
674 *neurology*, 268(5), 1962–1971. <https://doi.org/10.1007/s00415-020-10383-8>
- 675 [33] O'Brien, J. T., Firbank, M. J., Ritchie, K., Wells, K., Williams, G. B., Ritchie, C. W., &
676 Su, L. (2020). Association between midlife dementia risk factors and longitudinal brain

- 677 atrophy: the PREVENT-Dementia study. *Journal of neurology, neurosurgery, and*
678 *psychiatry*, 91(2), 158–161. <https://doi.org/10.1136/jnnp-2019-321652>
- 679 [34] Ritchie, K., Carrière, I., Su, L., O'Brien, J. T., Lovestone, S., Wells, K., & Ritchie, C. W.
680 (2017). The midlife cognitive profiles of adults at high risk of late-onset Alzheimer's disease:
681 The PREVENT study. *Alzheimer's & dementia : the journal of the Alzheimer's*
682 *Association*, 13(10), 1089–1097. <https://doi.org/10.1016/j.jalz.2017.02.008>
- 683 [35] Deng, F., Wells, K., Ritchie, K., Muniz-Terrera, G., Ritchie, C. W., O'Brien, J.T.,
684 Lawlor, B., Naci, L. (2022) Functional connectivity of the locus coeruleus with the
685 hippocampus and the cognitive profiles of asymptomatic mid-life individuals at risk for
686 Alzheimer's disease. *bioRxiv*.
- 687 [36] Jochemsen, H. M., Muller, M., van der Graaf, Y., & Geerlings, M. I. (2012). APOE ε4
688 differentially influences change in memory performance depending on age. The SMART-MR
689 study. *Neurobiology of Aging*, 33(4), 832.e15–832.e8.32E22.
690 <https://doi.org/10.1016/j.neurobiolaging.2011.07.016>
- 691 [37] Talboom, J. S., Häberg, A., De Both, M. D., Naymik, M. A., Schrauwen, I., Lewis, C.
692 R., Bertinelli, S. F., Hammersland, C., Fritz, M. A., Myers, A. J., Hay, M., Barnes, C. A.,
693 Glisky, E., Ryan, L., & Huentelman, M. J. (2019). Family history of Alzheimer's disease
694 alters cognition and is modified by medical and genetic factors. *eLife*, 8, e46179.
695 <https://doi.org/10.7554/eLife.46179>
- 696 [38] Debette, S., Wolf, P. A., Beiser, A., Au, R., Himali, J. J., Pikula, A., Auerbach, S.,
697 Decarli, C., & Seshadri, S. (2009). Association of parental dementia with cognitive and brain
698 MRI measures in middle-aged adults. *Neurology*, 73(24), 2071–2078.
699 <https://doi.org/10.1212/WNL.0b013e3181c67833>

- 700 [39] Stephen, R., Liu, Y., Ngandu, T., Rinne, J. O., Kemppainen, N., Parkkola, R.,
701 Laatikainen, T., Pajananen, T., Hänninen, T., Strandberg, T., Antikainen, R., Tuomilehto, J.,
702 Keinänen Kiukaanniemi, S., Vanninen, R., Helisalmi, S., Levälähti, E., Kivipelto, M.,
703 Soininen, H., & Solomon, A. (2017). Associations of CAIDE Dementia Risk Score with
704 MRI, PIB-PET measures, and cognition. *Journal of Alzheimer's disease : JAD*, *59*(2), 695–
705 705. <https://doi.org/10.3233/JAD-170092>
- 706 [40] Chan, D., Shafto, M., Kievit, R., Matthews, F., Spink, M., Valenzuela, M., Cam-CAN,
707 & Henson, R. N. (2018). Lifestyle activities in mid-life contribute to cognitive reserve in late-
708 life, independent of education, occupation, and late-life activities. *Neurobiology of aging*, *70*,
709 180–183. <https://doi.org/10.1016/j.neurobiolaging.2018.06.012>
- 710 [41] Livingston, G., Sommerlad, A., Orgeta, V., Costafreda, S. G., Huntley, J., Ames, D.,
711 Ballard, C., Banerjee, S., Burns, A., Cohen-Mansfield, J., Cooper, C., Fox, N., Gitlin, L. N.,
712 Howard, R., Kales, H. C., Larson, E. B., Ritchie, K., Rockwood, K., Sampson, E. L., Samus,
713 Q., ... Mukadam, N. (2017). Dementia prevention, intervention, and care. *Lancet (London,*
714 *England)*, *390*(10113), 2673–2734. [https://doi.org/10.1016/S0140-6736\(17\)31363-6](https://doi.org/10.1016/S0140-6736(17)31363-6)
- 715 [42] Wang, H. X., MacDonald, S. W., Dekhtyar, S., & Fratiglioni, L. (2017). Association of
716 lifelong exposure to cognitive reserve-enhancing factors with dementia risk: A community-
717 based cohort study. *PLoS medicine*, *14*(3), e1002251.
718 <https://doi.org/10.1371/journal.pmed.1002251>
- 719 [43] Dekhtyar, S., Marseglia, A., Xu, W., Darin-Mattsson, A., Wang, H. X., & Fratiglioni, L.
720 (2019). Genetic risk of dementia mitigated by cognitive reserve: A cohort study. *Annals of*
721 *neurology*, *86*(1), 68–78. <https://doi.org/10.1002/ana.25501>

- 722 [44] Franzmeier, N., Koutsouleris, N., Benzinger, T., Goate, A., Karch, C. M., Fagan, A. M.,
723 McDade, E., Duering, M., Dichgans, M., Levin, J., Gordon, B. A., Lim, Y. Y., Masters, C. L.,
724 Rossor, M., Fox, N. C., O'Connor, A., Chhatwal, J., Salloway, S., Danek, A., Hassenstab, J.,
725 ... Ewers, M. (2020). Predicting sporadic Alzheimer's disease progression via inherited
726 Alzheimer's disease-informed machine-learning. *Alzheimer's & dementia : the journal of the*
727 *Alzheimer's Association*, 16(3), 501–511. <https://doi.org/10.1002/alz.12032>
- 728 [45] Robertson I. H. (2014). Right hemisphere role in cognitive reserve. *Neurobiology of*
729 *aging*, 35(6), 1375–1385. <https://doi.org/10.1016/j.neurobiolaging.2013.11.028>
- 730 [46] Robertson I. H. (2013). A noradrenergic theory of cognitive reserve: implications for
731 Alzheimer's disease. *Neurobiology of aging*, 34(1), 298–308.
732 <https://doi.org/10.1016/j.neurobiolaging.2012.05.019>
- 733 [47] Liu, K. Y., Kievit, R. A., Tsvetanov, K. A., Betts, M. J., Düzel, E., Rowe, J. B., Cam-
734 CAN, Howard, R., & Hämmerer, D. (2020). Noradrenergic-dependent functions are
735 associated with age-related locus coeruleus signal intensity differences. *Nature*
736 *communications*, 11(1), 1712.
- 737 [48] Richards, M., & Deary, I. J. (2005). A life course approach to cognitive reserve: a model
738 for cognitive aging and development?. *Annals of neurology*, 58(4), 617–622.
739 <https://doi.org/10.1002/ana.20637>
- 740 [49] Gow, A. J., Pattie, A., & Deary, I. J. (2017). Lifecourse Activity Participation From
741 Early, Mid, and Later Adulthood as Determinants of Cognitive Aging: The Lothian Birth
742 Cohort 1921. The journals of gerontology. Series B, *Psychological sciences and social*
743 *sciences*, 72(1), 25–37. <https://doi.org/10.1093/geronb/gbw124>

- 744 [50] Valenzuela, M. J., & Sachdev, P. (2007). Assessment of complex mental activity across
745 the lifespan: development of the Lifetime of Experiences Questionnaire
746 (LEQ). *Psychological medicine*, 37(7), 1015–1025. <https://doi.org/10.1017/S003329170600938X>
- 747 [51] Fayosse, A., Nguyen, D. P., Dugravot, A., Dumurgier, J., Tabak, A. G., Kivimäki, M.,
748 Sabia, S., & Singh-Manoux, A. (2020). Risk prediction models for dementia: role of age and
749 cardiometabolic risk factors. *BMC medicine*, 18(1), 107. [https://doi.org/10.1186/s12916-020-](https://doi.org/10.1186/s12916-020-01578-x)
750 [01578-x](https://doi.org/10.1186/s12916-020-01578-x)
- 751 [52] Sindi, S., Calov, E., Fokkens, J., Ngandu, T., Soininen, H., Tuomilehto, J., & Kivipelto,
752 M. (2015). The CAIDE Dementia Risk Score App: The development of an evidence-based
753 mobile application to predict the risk of dementia. *Alzheimer's & dementia (Amsterdam,*
754 *Netherlands)*, 1(3), 328–333. <https://doi.org/10.1016/j.dadm.2015.06.005>
- 755 [53] Hsieh, S., Schubert, S., Hoon, C., Mioshi, E., & Hodges, J. R. (2013). Validation of the
756 Addenbrooke's Cognitive Examination III in frontotemporal dementia and Alzheimer's
757 disease. *Dementia and geriatric cognitive disorders*, 36(3-4), 242–250.
758 <https://doi.org/10.1159/000351671>
- 759 [54] Ritchie, K., de Roquefeuil, G., Ritchie, C., Besset, A., Poulain, V., Artero, S., &
760 Ancelin, M. L. (2014). COGNITO: computerized assessment of information
761 processing. *Journal of Psychology and Psychotherapy*, 4(2). [https://doi.org/10.4172/2161-](https://doi.org/10.4172/2161-0487.1000136)
762 [0487.1000136](https://doi.org/10.4172/2161-0487.1000136)
- 763 [55] Ritchie, K., Carrière, I., Howett, D., Su, L., Hornberger, M., O'Brien, J. T., Ritchie, C.
764 W., & Chan, D. (2018). Allocentric and Egocentric Spatial Processing in Middle-Aged
765 Adults at High Risk of Late-Onset Alzheimer's Disease: The PREVENT Dementia

- 766 Study. *Journal of Alzheimer's disease : JAD*, 65(3), 885–896. <https://doi.org/10.3233/JAD->
767 [180432](https://doi.org/10.3233/JAD-180432)
- 768 [56] Parra, M. A., Abrahams, S., Logie, R. H., Méndez, L. G., Lopera, F., & Della Sala, S.
769 (2010). Visual short-term memory binding deficits in familial Alzheimer's disease. *Brain : a*
770 *journal of neurology*, 133(9), 2702–2713. <https://doi.org/10.1093/brain/awq148>
- 771 [57] Stern Y. (2009). Cognitive reserve. *Neuropsychologia*, 47(10), 2015–2028.
772 <https://doi.org/10.1016/j.neuropsychologia.2009.03.004>
- 773 [58] Stern Y. (2012). Cognitive reserve in ageing and Alzheimer's disease. *The Lancet*.
774 *Neurology*, 11(11), 1006–1012. [https://doi.org/10.1016/S1474-4422\(12\)70191-6](https://doi.org/10.1016/S1474-4422(12)70191-6)
- 775 [59] Stern, Y., Barnes, C. A., Grady, C., Jones, R. N., & Raz, N. (2019). Brain reserve,
776 cognitive reserve, compensation, and maintenance: operationalization, validity, and
777 mechanisms of cognitive resilience. *Neurobiology of aging*, 83, 124–129.
778 <https://doi.org/10.1016/j.neurobiolaging.2019.03.022>
- 779 [60] Schiepers, O., Köhler, S., Deckers, K., Irving, K., O'Donnell, C. A., van den Akker, M.,
780 Verhey, F., Vos, S., de Vugt, M. E., & van Boxtel, M. (2018). Lifestyle for Brain Health
781 (LIBRA): a new model for dementia prevention. *International journal of geriatric*
782 *psychiatry*, 33(1), 167–175. <https://doi.org/10.1002/gps.4700>
- 783 [61] Aiken, L. S., & West, S. G. (1991). Multiple regression: Testing and interpreting
784 interactions. Newbury Park, CA: Sage.
- 785 [62] Jack, C. R., Jr, Knopman, D. S., Jagust, W. J., Shaw, L. M., Aisen, P. S., Weiner, M. W.,
786 Petersen, R. C., & Trojanowski, J. Q. (2010). Hypothetical model of dynamic biomarkers of

787 the Alzheimer's pathological cascade. *The Lancet. Neurology*, 9(1), 119–128.

788 [https://doi.org/10.1016/S1474-4422\(09\)70299-6](https://doi.org/10.1016/S1474-4422(09)70299-6)

789 [63] Williams, O. A., An, Y., Armstrong, N. M., Kitner-Triolo, M., Ferrucci, L., & Resnick,
790 S. M. (2020). Profiles of Cognitive Change in Preclinical and Prodromal Alzheimer's Disease
791 Using Change-Point Analysis. *Journal of Alzheimer's disease : JAD*, 75(4), 1169–1180.

792 <https://doi.org/10.3233/JAD-191268>

793 [64] Laukka, E. J., Macdonald, S. W., Fratiglioni, L., & Bäckman, L. (2012). Preclinical
794 cognitive trajectories differ for Alzheimer's disease and vascular dementia. *Journal of the*
795 *International Neuropsychological Society : JINS*, 18(2), 191–199.

796 <https://doi.org/10.1017/S1355617711001718>

797 [65] Miron, J., Picard, C., Lafaille-Magnan, M. É., Savard, M., Labonté, A., Breitner, J.,
798 Rosa-Neto, P., Auld, D., Poirier, J., & PREVENT-AD research group (2019). Association of
799 TLR4 with Alzheimer's disease risk and presymptomatic biomarkers of inflammation.

800 *Alzheimer's & dementia : the journal of the Alzheimer's Association*, 15(7), 951–960.

801 <https://doi.org/10.1016/j.jalz.2019.03.012>

802 [66] Noble, J. M., Manly, J. J., Schupf, N., Tang, M. X., Mayeux, R., & Luchsinger, J. A.
803 (2010). Association of C-reactive protein with cognitive impairment. *Archives of neurology*,

804 67(1), 87–92. <https://doi.org/10.1001/archneurol.2009.308>

805 [67] Franks, K. H., Bransby, L., Saling, M. M., & Pase, M. P. (2021). Association of Stress
806 with Risk of Dementia and Mild Cognitive Impairment: A Systematic Review and Meta-
807 Analysis. *Journal of Alzheimer's disease : JAD*, 82(4), 1573–1590.

808 <https://doi.org/10.3233/JAD-210094>

- 809 [68] Chiao, C. Y., Wu, H. S., & Hsiao, C. Y. (2015). Caregiver burden for informal
810 caregivers of patients with dementia: A systematic review. *International nursing*
811 *review*, 62(3), 340–350. <https://doi.org/10.1111/inr.12194>
- 812 [69] Yu, H., Wang, X., He, R., Liang, R., & Zhou, L. (2015). Measuring the Caregiver
813 Burden of Caring for Community-Residing People with Alzheimer's Disease. *PloS*
814 *one*, 10(7), e0132168. <https://doi.org/10.1371/journal.pone.0132168>
- 815 [70] Ross, K. M., & Carroll, J. E. (2017). Alzheimer's Disease Caregivers' Health and
816 Important Resources: Next Steps in Intervention Research. *Psychosomatic medicine*, 79(7),
817 732–734. <https://doi.org/10.1097/PSY.0000000000000518>
- 818 [71] Márquez, F., & Yassa, M. A. (2019). Neuroimaging Biomarkers for Alzheimer's
819 Disease. *Molecular neurodegeneration*, 14(1), 21. [https://doi.org/10.1186/s13024-019-0325-](https://doi.org/10.1186/s13024-019-0325-5)
820 [5](https://doi.org/10.1186/s13024-019-0325-5)
- 821 [72] Amaral, D. G., & Sinnamon, H. M. (1977). The locus coeruleus: neurobiology of a
822 central noradrenergic nucleus. *Progress in neurobiology*, 9(3), 147–196.
823 [https://doi.org/10.1016/0301-0082\(77\)90016-8](https://doi.org/10.1016/0301-0082(77)90016-8)
- 824 [73] Ritchie, S. J., & Tucker-Drob, E. M. (2018). How Much Does Education Improve
825 Intelligence? A Meta-Analysis. *Psychological science*, 29(8), 1358–1369.
826 <https://doi.org/10.1177/0956797618774253>
- 827 [74] Borgeest, G. S., Henson, R. N., Shafto, M., Samu, D., Cam-CAN, & Kievit, R. A.
828 (2020). Greater lifestyle engagement is associated with better age-adjusted cognitive
829 abilities. *PloS one*, 15(5), e0230077. <https://doi.org/10.1371/journal.pone.0230077>

830 [75] Dounavi, M. E., Low, A., McKiernan, E. F., Mak, E., Muniz-Terrera, G., Ritchie, K.,
831 Ritchie, C. W., Su, L., & O'Brien, J. T. (2021). Evidence of cerebral hemodynamic
832 dysregulation in middle-aged APOE ϵ 4 carriers: The PREVENT-Dementia study. *Journal of*
833 *cerebral blood flow and metabolism : official journal of the International Society of Cerebral*
834 *Blood Flow and Metabolism*, 41(11), 2844–2855.
835 <https://doi.org/10.1177/0271678X211020863>

836 [76] Low, A., Su, L., Stefaniak, J. D., Mak, E., Dounavi, M. E., Muniz-Terrera, G., Ritchie,
837 K., Ritchie, C. W., Markus, H. S., & O'Brien, J. T. (2021). Inherited risk of dementia and the
838 progression of cerebral small vessel disease and inflammatory markers in cognitively healthy
839 midlife adults: the PREVENT-Dementia study. *Neurobiology of aging*, 98, 124–133.
840 <https://doi.org/10.1016/j.neurobiolaging.2020.10.029>

841 [77] Kivipelto, M., Mangialasche, F., & Ngandu, T. (2018). Lifestyle interventions to prevent
842 cognitive impairment, dementia and Alzheimer disease. *Nature reviews. Neurology*, 14(11),
843 653–666. <https://doi.org/10.1038/s41582-018-0070-3>

844

845

Figures and Legends

Table 1. Demographic specifications of the cohort at baseline and follow-up based on the dementia family history and on APOE genotype

	Baseline (n=210)			Follow-up (n=188)		
	FH- (n=107)	FH+ (n=103)	<i>p</i> (Mann-Whitney U)	FH- (n=89)	FH+ (n=99)	<i>p</i> (Mann-Whitney U)
Age (y)	52.0 ± 11.0	53.0 ± 7.0	0.54	54.0 ± 11.0	55.0 ± 6.0	0.22
Years of Education	16.0 ± 6.0	16.0 ± 5.0	0.34	17.0 ± 5.0	16.0 ± 5.0	0.21
CAIDE	5.0 ± 4.0	6.0 ± 2.0	0.03*	6.0 ± 4.0	7.0 ± 3.0	0.003**
	<i>p</i> (Chi-Square)			<i>p</i> (Chi-Square)		
Sex (%f)	69.2%	71.8%	0.67	69.7%	71.7%	0.76
APOE e4 (% Carriers) §	28.0%	44.6%	0.01*	28.1%	44.3%	0.02*
	APOEe4- (n=133)	APOEe4+ (n=75)	<i>p</i> (Mann-Whitney U)	APOEe4- (n=118)	APOEe4+ (n=68)	<i>p</i> (Mann-Whitney U)
Age (y)	53.0 ± 8.0	52.0 ± 8.0	0.06	55.0 ± 8.0	54.5 ± 8.0	0.08
Years of Education	16.0 ± 5.0	17.0 ± 5.0	0.50	16.0 ± 5.0	17.0 ± 5.0	0.47
CAIDE (incl. APOE status)	5.0 ± 3.0	7.0 ± 3.0	0.0003***	6.0 ± 3.0	7.0 ± 4.0	0.0002***
CAIDE (excl. APOE status)	5.0 ± 2.0	4.0 ± 3.0	0.12	5.0 ± 2.0	4.5 ± 3.0	0.25
	<i>p</i> (Chi-Square)			<i>p</i> (Chi-Square)		
Sex (%f)	69.9%	70.7%	0.91	71.2%	69.1%	0.77

Note: median \pm interquartile range (IQR) was reported for continuous variables. Abbreviations: FH-, Negative family history of dementia; FH+, positive family history of dementia; APOE ϵ 4 +, Apolipoprotein ϵ 4 genotype positive; APOE ϵ 4 -, Apolipoprotein ϵ 4 genotype negative. [§]
Information for the APOE ϵ 4 genotype was not collected for 2 subjects.

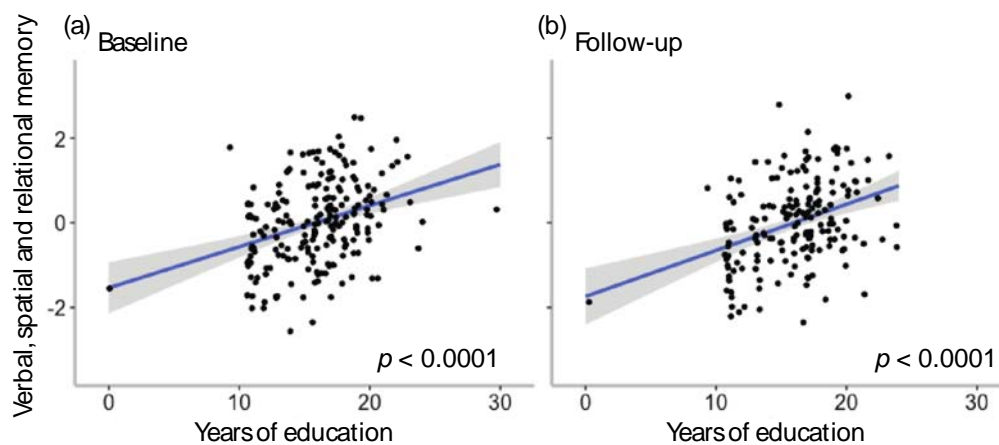


Figure 1. Association of years of education with verbal, spatial and relational memory performance at baseline (a) and follow-up (b). The x axis displays total reported years of education attained. On the y axis, higher scores represent better verbal, spatial and relational memory performance.

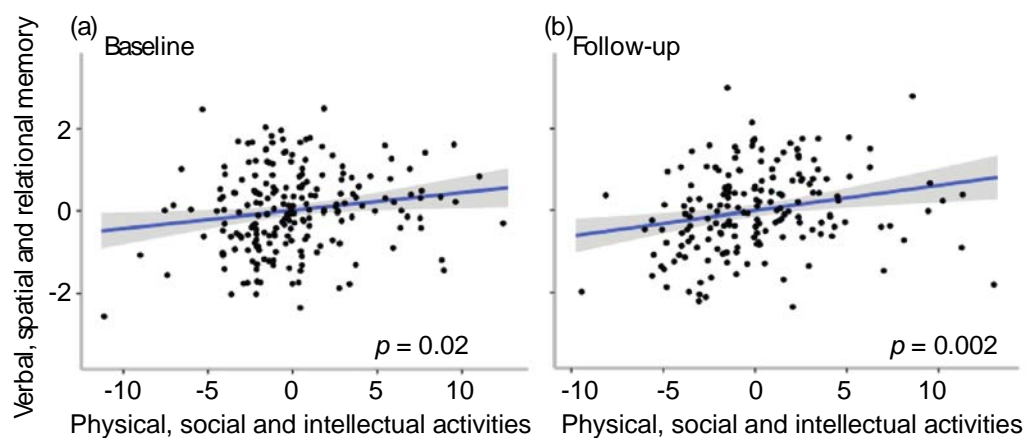


Figure 2. Association of physical, social and intellectual activities with verbal, spatial and relational memory performance at baseline (a) and follow-up (b). Physical, social and intellectual activities are mean-centred. On the x axis, higher scores represent more frequent engagement in physical, social and intellectual lifestyle activities, and on the y axis, higher scores represent better verbal, spatial and relational memory performance.

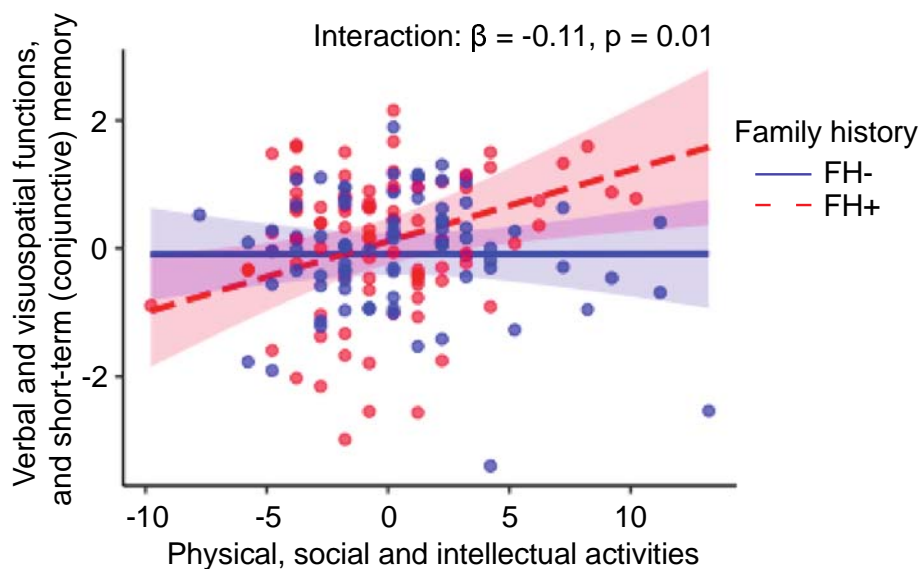


Figure 3. Interaction of physical, social and intellectual activities and family history of dementia on verbal and visuospatial functions, and short-term (conjunctive) memory at follow-up. On the x axis, higher scores represent more frequent engagement in physical, social and intellectual lifestyle activities, and on the y axis, higher scores represent poorer verbal and visuospatial functions, and short-term (conjunctive) memory. Physical, social and intellectual activities are mean-centred. The positive family history of dementia group showed a significant positive association between engagement in these activities and improved verbal and visuospatial functions, and short-term (conjunctive) memory. No significant association was seen for the negative family history group. Abbreviations: FH, family history; FH+, family history positive; FH-, family history negative.