

1 **TITLE**

2 Mercury exposure and health risks associated with use of skin-lightening products: A systematic  
3 review

4  
5

6 **AUTHORS AND AFFILIATIONS**

7 Ashley Bastiansz, Jessica Ewald, Verónica Rodríguez Saldaña, Andrea Santa-Rios, and  
8 Niladri Basu

9

10 Faculty of Agricultural and Environmental Sciences, McGill University, Montreal, Quebec,  
11 Canada

12  
13  
14

15 **CORRESPONDING AUTHOR**

16 Ashley Bastiansz  
17 CINE Building  
18 21,111 Lakeshore Road  
19 Faculty of Agricultural and Environmental Sciences  
20 McGill University  
21 Montreal, Quebec, Canada  
22 H9X 3V9

23 [Ashley.bastiansz@mail.mcgill.ca](mailto:Ashley.bastiansz@mail.mcgill.ca)

24 1-647-929-2604

25

26 **RUNNING TITLE**

27 Systematic Review of Mercury and Skin-Lightening Products

28  
29

30 **ACKNOWLEDGEMENTS**

31 We acknowledge funding support from the Canada Research Chairs Program and the PURE  
32 CREATE program funded by Natural Sciences and Engineering Research Council of Canada's  
33 (NSERC). We thank Jenny Eng for technical and administrative support.

34  
35

36 **DISCLAIMERS**

37 The authors declare no competing financial interests.

38

39

## 40 **Abstract**

41

42 **Background:** The Minamata Convention on Mercury (Article 4) prohibits the manufacture,  
43 import or export of skin-lightening products containing mercury concentrations above 1  
44 µg/g. However, there is a lack of knowledge surrounding the global prevalence of mercury-added  
45 skin-lightening products.

46

47 **Objective:** The objective of this study was to increase our understanding of worldwide human  
48 mercury exposure and associated health risks from the use of skin-lightening products.

49

50 **Methods:** A systematic search of peer-reviewed scientific literature was performed in four  
51 databases (PubMed, Web of Science Core Collection, Scopus, and Toxline). The initial search in  
52 July of 2018 identified 1,711 unique scientific articles, of which 34 were ultimately deemed  
53 eligible for inclusion after iterative screens at the title, abstract, and whole text levels. A second  
54 search was performed in November of 2020 using the same methods, of which another 7  
55 scientific articles were included. All papers were organized according to four data groups 1)  
56 “Mercury in products”, 2) “Usage of products”, 3) “Human biomarkers of exposure”; and 4)  
57 “Health impacts”, prior to data extraction and synthesis.

58

59 **Results:** This review was based on data contained within 41 peer-reviewed scientific papers  
60 from 22 countries worldwide published between 2000 and 2020. In total, we captured mercury  
61 concentration values from 787 skin-lightening product samples (overall pooled central median  
62 mercury level was 0.49 µg/g, IQR: 0.02 – 5.9) and 1,042 human biomarker measurements from  
63 863 individuals. We also synthesized usage information from 3,898 individuals, and self-  
64 reported health impacts associated with using mercury-added products from 832 individuals.

65

66 **Discussion:** This review suggests that mercury widely exists as an active ingredient in many  
67 skin-lightening products worldwide, and that users are at risk of variable, and often high  
68 exposures. These synthesized findings help increase our understanding of the health risks  
69 associated with the use of these products.

70

71  
72  
73  
74  
75  
76  
77  
78  
79  
80  
81  
82  
83  
84  
85  
86  
87  
88  
89  
90  
91  
92  
93  
94  
95

## 1. Introduction

Mercury is a global pollutant of concern to human health (Eagles-Smith et al., 2018; Ha et al., 2017). Most populations worldwide are exposed to varying degrees of mercury (Basu et al., 2018). Several forms of mercury exist naturally in the environment (i.e., metallic or elemental), inorganic and organic, and while there are differences in their toxicity, all forms can adversely impact the nervous, cardiovascular, and immune systems (Basu et al., 2018; Eagles-Smith et al., 2018; Ha et al., 2017).

Human exposures to mercury outside of occupational settings (e.g., artisanal and small-scale gold mining and dentistry) are largely realized through the consumption of mercury-contaminated seafood and contact with certain products that contain mercury (e.g., dental amalgam, pesticides, broken fluorescent lightbulbs, and batteries) (Basu et al., 2018; Eagles-Smith et al., 2018; UNEP/WHO, 2008). Another product that contains mercury is skin-lightening cosmetics, and there are increasing concerns about the dangers posed by frequent usage of such items (WHO, 2019). In certain cosmetic products, organic mercury compounds including ethylmercury, methylmercury, and phenyl mercuric salts may be used as preservatives (Al-Saleh & Al-Doush, 1997; Glahder et al., 1999; Hamann et al., 2014; Ladizinski et al., 2011). Further, inorganic mercury salts (e.g., mercurous chloride (calomel), mercuric chloride, mercurous oxide, ammoniated mercuric chloride and mercuric iodide, and ammoniated mercury), may be purposefully added into skin-lightening cosmetic products as they interfere with the tyrosinase enzyme inhibiting the skin from producing melanin, resulting in lighter skin pigmentation (Chen et al., 2020; Denton et al., 1952; Lerner, 1952). Since mercury is absorbed through the skin, mercury poisoning may arise after usage of a skin-lightening product (Olumide et al., 2008). Long-term exposure of mercury-added skin-lightening products have been associated with renal toxicity, neurological abnormalities, and dermal rashes (Chan, 2011; Palmer et al., 2000). Many women who use these products are of childbearing

96 age, and the potential transfer of mercury from mother to fetus could have implications resulting in  
97 neurological and nephrological disorders (Bose-O'Reilly et al., 2010; Counter & Buchanan, 2004).

98  
99 Skin-lightening products exist in various forms (most commonly creams and soaps), and they are  
100 used without medical supervision (Ladizinski et al., 2011). Usage of skin-lightening products is practiced  
101 worldwide, particularly in African, Asian, and Caribbean nations as well as in darker-skinned  
102 communities in Europe and North America (Dadzie & Petit, 2009; UNEP/WHO, 2008). Individuals from  
103 these communities feel motivated to use skin-lightening products to increase attractiveness, remove  
104 existing blemishes, improve skin texture, and impress their peers (Lewis et al., 2011; Osei et al., 2018;  
105 Traore et al., 2005). Societal perception of beauty continues to perpetuate the notion that lighter skin is  
106 more desirable and creates more social and professional opportunities (Peltzer et al., 2016). The market  
107 for skin-lightening products is increasing as the demographics of users continues to expand, making it one  
108 of the fastest-growing beauty industries globally. These products remain easily accessible at beauty  
109 supply stores, ethnic markets, and online (Uram et al., 2010). The illegal nature of skin-lightening  
110 products makes it difficult to differentiate the established brands since there is a strong financial motive to  
111 produce counterfeit products (Murphy et al., 2009; Prevodnik et al., 2018). As a result of the  
112 decentralized nature of these products, it is difficult to fully regulate mercury-added skin-lightening  
113 products, as countries often lack infrastructure to monitor their import and export.

114  
115 The entry into force of the Minamata Convention on Mercury on 16 August 2017 was a global  
116 environmental agreement by governments set in place to reduce emissions and releases of mercury and  
117 mercury compounds to protect human health and the environment (Article 1) (UNEP, 2019). Article 4 of  
118 the Minamata Convention mandated that Parties must ban the manufacture, import, and export of  
119 products that include creams and soaps with a mercury content higher than 1 µg/g after 2020 (UNEP,  
120 2019). This value of mercury has already formed a basis for regulatory action by organizations such as the  
121 US Food and Drug Administration (FDA) and Health Canada (Government of Canada, 2012; U.S. FDA,

122 2020). Despite such limits (and similar ones set by many governments worldwide), many mercury-added  
123 skin-lightening products have mercury levels that exceed 1 µg/g (Hamann et al., 2014). Issues detailed in  
124 the previous paragraphs, coupled with our lack of knowledge concerning the global prevalence of these  
125 products and their mercury content, pose challenges for scientists, regulators, and manufacturers.  
126 Accordingly, the overall objective of this study was to increase our understanding of worldwide human  
127 mercury exposure and associated health risks from the use of skin-lightening products. This objective was  
128 realized through a systematic review of the peer-reviewed scientific literature centered on the following  
129 four data groups: 1) “Mercury in products” for the characterization of mercury in products (e.g.,  
130 concentration, speciation, types of products); 2) “Usage of products”, for users of skin-lightening products  
131 (e.g., socioeconomic variables, demographics, exposure variables); 3) “Human biomarkers of exposure”  
132 for human biomarkers of skin-lightening users (e.g., hair, urine, blood); and 4) “Health impacts” for  
133 associated health outcomes of usage.

134

135 **2. Methods**

136

137 **2.1 Search strategy**

138 A protocol for the search strategy was developed in July 2018 and then revisited in November  
139 2020. We reviewed key resources [Preferred reporting items for systematic reviews and meta-analyses  
140 (PRISMA); <http://www.prisma-statement.org/>; (OHAT, 2015)] including a systematic review concerning  
141 methylmercury exposure from seafood consumption (Sheehan et al., 2014) and a recent review  
142 concerning worldwide mercury exposures as part of the 2018 UN Global Mercury Assessment (Basu et  
143 al., 2018). The protocol defined study selection criteria and the type of data that would be extracted for  
144 each study and was uploaded to PROSPERO on April 28, 2020 (CRD42020160299).

145

146 A systematic search of peer-reviewed scientific literature was used to identify relevant studies.  
147 An electronic search was performed in four databases (PubMed, Web of Science Core Collection, Scopus,  
148 and Toxline), with the last search carried out on 20 November 2020 as outlined in the PRISMA flow  
149 diagram (Figure 1). The search strategy included two Boolean search phrases that were combined with  
150 AND: #1 – mercury OR Hg OR MeHg OR \*Mercur\*; and #2 - cosmetic\* OR lotion\* OR cream\* OR  
151 soap\* OR shampoo\* OR makeup OR whitening OR lightening OR bleaching OR mascara. In addition to  
152 the systematic search, we considered grey literature and references cited in read works. We focused on  
153 works that were written in English, French, Spanish, and Portuguese.

154

155 **2.2 Study selection criteria**

156 Scientific papers were identified and reviewed in July 2018, and then again in November 2020.  
157 We restricted studies to those published in or after 2000 and only original articles were included for  
158 analysis. After the initial literature search (July 2018), duplicates were removed, and a list of 1,711 unique  
159 references was imported to Mendeley. Next, the publication titles were reviewed to determine their  
160 relevance which resulted in the inclusion of 459 unique citations. Publications excluded at this stage were

161 labelled with one of the following primary reasons: “No abstract”, “Background paper”, “Foreign  
162 language”, “Wrong drug”, “Wrong outcome”; “Wrong population”, “Wrong population type”, “Wrong  
163 study design”, and “Wrong study duration”. Medical case reports were excluded from the main study but  
164 were tagged so that they could be qualitatively summarized separately from the formal systematic review.  
165 This screening activity was carried out by dividing the total number of publications into two parts, and  
166 each part was screened by three reviewers (J.E., V.S. and A.S.) to avoid conflicts. This effort resulted in  
167 the inclusion of 183 publications and the exclusion of 276.

168

169 A second literature search, using the previously described methods, was conducted in November  
170 2020 using three databases (PubMed, Web of Science Core Collection, and Scopus) to identify additional  
171 scientific literature that had been published after the first literature search. After removing duplicates, 319  
172 publications were identified for screening. These articles were assessed in the same manner as the first  
173 search, and from this activity we identified 23 additional publications for inclusion.

174

175 From the first and second literature searches, 183 and 23 publications, respectively, were included  
176 for full text screening. At this point, we focused on binning publications (in particular, the studies’ data  
177 and information) into four groups: 1) “Mercury in products” for the characterization of mercury in  
178 products (e.g., concentration, speciation, types of products); 2) “Usage of products”, for users of skin-  
179 lightening products (e.g., socioeconomic variables, demographics, exposure variables); 3) “Human  
180 biomarkers of exposure” for human biomarkers (e.g., mercury measures in hair, urine, or blood) of skin-  
181 lightening users; and 4) “Health impacts” for associated health outcomes of usage. Based on initial  
182 reviews of the available data, we decided to focus the first (“Mercury in products”) and third (“Human  
183 biomarkers of exposure”) groups on papers in which quantitative data could be extracted, and papers from  
184 the second (“Usage of products”) and fourth (“Health impacts”) groups on papers in which data could be  
185 explored in a semi-quantitative manner. Two studies external from the literature search (Kinabo, 2005;  
186 Voegborlo et al., 2008) identified through an included publication (Agorku et al., 2016) were also

187 included for analysis. After carrying out the full text screening, 34 and 7 papers from the first and second  
188 search, respectively, were identified for the data extraction phase, thus resulting in a total of 41 papers.

189

## 190 ***2.3 Data Extraction and Analysis***

191 To summarize mercury concentrations in skin-lightening product data and human biomarkers, the  
192 approach of Sheehan et al. (2014) was followed. Briefly, we reported on two summary distributions  
193 [central (median) and upper] for each skin-lightening product by pooling the respective data together over  
194 relevant studies. When studies had multiple measurements for central exposures, median measurements  
195 were favored over the mean. Throughout this report, we refer to total mercury as “mercury”  
196 measurements in a given skin-lightening product or human biomarker sample type.

197

### 198 ***2.3.1 “Mercury in products” Data Group***

199 Studies were organized by location (country, WHO region) of product manufacture and purchase,  
200 and categorized into type of product (cream, soap, facial soap, other), and method of purchase (in store,  
201 online). Products categorized as “other” included scrubs, balms, oils, pills, personal mixtures as well as  
202 products that were not specifically labelled. Personal mixtures of multiple products and at home remedies  
203 are commonly used to increase potency and whitening effect. From each study, data was extracted on  
204 sample size (number) and volume of sample (mL or g), along with key information on the mercury  
205 measurement including the inorganic (ammoniated mercury) and organic mercury compounds (phenyl  
206 mercuric salts, thiomersal), testing instrumentation [cold vapor-atomic absorption spectrophotometry  
207 (CVAAS), X-ray fluorescence (XRF), inductively coupled plasma mass spectrometry (ICP-MS), etc.],  
208 analytical quality control (reported detection limit, accuracy, precision), and a measure of the central  
209 mercury concentration values (mean or median, as  $\mu\text{g/g}$ ). Skin-lightening cosmetic samples assessed  
210 using XRF instrumentation and commercial screening kits were excluded from the analysis due to  
211 concerns surrounding the reliability of the measures they report. Products manufactured in the same  
212 geographic location (country, WHO region) and of the same product type were collectively grouped



213 together. We considered mercury as an active ingredient in samples with concentrations greater than 1  
214  $\mu\text{g/g}$ . Non-detectable mercury concentration values were entered as half the detection limit as  
215 recommended in the US EPA's Regional Guidance on Handling Chemical Concentration Data Near the  
216 Detection Limit in Risk Assessment (Smith, 1991).

217

### 218 **2.3.2 “Usage of products” Data Group**

219 A review publication by Sagoe et al. (2019) was identified and adopted as a framework for this  
220 data group. After removing duplicate studies from our literature search as well as studies published before  
221 2000, a total of 16 studies were included for analysis. Since usage patterns are irrespective of product  
222 ingredients (i.e., mercury, hydroquinone, topical corticosteroids), usage patterns of all skin-lightening  
223 product users were considered. We extracted information on study type, type of bleaching products, and  
224 demographics of users (i.e., location, sex, age, marital status, occupation, education level, average  
225 monthly income), and key factors surrounding exposure characteristics were evaluated: (1) application  
226 (i.e., face, whole body), (2) frequency of application (per day), (3) quantity used (grams per month); and  
227 (4) duration (months).

228

### 229 **2.3.3 “Human biomarkers of exposure” Data Group**

230 For biomarkers (hair, urine, blood) of mercury exposure, we extracted data on the populations'  
231 characteristics (age, sex, sample size) and location (country, WHO region), as well as mercury exposure  
232 measurements [mercury speciation, testing instrumentation (CVAAS, XRF, ICP-MS, etc.), analytical  
233 quality control (reported detection limit, accuracy, precision, testing instrumentation)], and a measure of  
234 central tendency (mean or median).

235

### 236 **2.3.4 “Health impacts” Data Group**

237 Reported health impacts associated with the use of mercury-added skin-lightening products were  
238 reviewed in a semi-quantitative manner. Key metadata (e.g., location, type of study, age, sample size, sex)

239 and measurement information (level of mercury in biomarker, associated health effect) were recorded as  
240 available. Individuals reporting health impacts in combination with other mercury containing products or  
241 skin-lightening products not containing mercury were not included. We focused this work only on current  
242 users of skin-lightening products.

243

#### 244 ***2.4 Quality Assessment/Risk of Bias***

245 We assessed risk of bias and study quality specifically for the “Mercury in products” and “Human  
246 biomarkers of exposure” data groups. This was performed using the framework published by Hu et al.  
247 (2018) and the National Toxicology Program’s OHAT framework (OHAT, 2015). Study quality was  
248 assessed by nine items that were grouped into three risk of bias categories: (1) mercury exposure  
249 detection bias [i.e., measurement instrument, use of reference material, replicate measures, acceptable  
250 limit of detection (LOD)]; (2) selection bias (i.e., selection method, sample size, mercury exposure  
251 characteristics); and (3) other biases (i.e., demographics, key descriptive measures). Each of the nine  
252 items was scored “0” (high risk of bias), “1” (moderate risk of bias) or “2” (low risk of bias). Author  
253 (A.B.) independently scored each paper and consulted with other authors (J. E., A. S., and V. S.) in cases  
254 where additional consensus was required. For the skin-lightening product sample sizes, the sample size  
255 item was given a score of “0” if studies assessed <10 products, “1” for 10-30 products, and “2” for >30  
256 products. For biomarker samples, the sample size item was given a score of “0” if studies assessed <50  
257 biomarker samples, “1” for 50-200 biomarker samples, and “2” for >200 biomarker samples. The overall  
258 study rating was based on an assessment of the nine items. Total scores ranged between 0-18 and  
259 characterized as: high risk/low quality (0-5), moderate risk/quality (6-12), and high quality/low risk (13-  
260 18). Studies characterized as “high risk/low quality” were further reviewed before being deemed  
261 appropriate for inclusion.

262

263

## 264 **3. Results**

265

### 266 ***3.1 Overview of studies***

267 This review was based on data contained within 41 peer-reviewed scientific papers from 22  
268 countries published between 2000 and 2020. In total, we captured mercury concentration values from 787  
269 skin-lightening product samples, and 1,042 biomarker measurements from 863 individuals. The average  
270 sample size across “Mercury in products” studies was 36 products with a range of 2 to 191 skin-  
271 lightening products reported upon in each study. The average sample size for the “Human biomarkers of  
272 exposure” group excluding non-users (i.e., family members, control groups) was 88 biomarker samples  
273 with a range between 11 to 282 biomarker samples per study. In addition, we compiled usage information  
274 from 3,898 individuals, and self-reported health impacts associated with using mercury-added products  
275 from 832 individuals.

276

277 Studies from the two quantitative data groups (i.e., mercury levels in products, and human  
278 biomonitoring studies) were largely situated, according to WHO region locations, in the Eastern-  
279 Mediterranean (27.6%), Western Pacific (24.1%), the Americas (24.1%), and Africa (17.2%) regions,  
280 with fewer studies in South-East Asia (3.4%) and Europe (3.4%) (Table 2). Studies concerning usage of  
281 products and health impacts were largely situated in Africa (31.3%) and the Americas (31.3%), Eastern-  
282 Mediterranean (18.8%), Western-Pacific (12.5%), with the fewest in South-East Asia (6.3%) and none  
283 from Europe.

284

### 285 ***3.2 Quality Assessment***

286 There were 25 studies grouped under “Mercury in products”, and these studies had a mean total  
287 risk of bias score of 10.3 with individual total scores ranging from 4 to 14. A total of three (11.1%)  
288 studies were categorized as high quality/low risk of bias, whereas 23 (85.2%) studies met the moderate

289 quality/risk of bias, and one (3.7%) study was considered low quality/low risk of bias (Table 3). There  
290 were nine studies grouped under “Human biomarkers of exposure”, and these studies had a mean total  
291 risk of bias score of 9.6 with individual total scores ranging from 6 to 12. All these studies met the  
292 moderate quality/risk of bias. We note that all studies used convenience sampling methods to retrieve  
293 human biomarker and skin-lightening product samples.

294  
295 In terms of exposure detection bias, the most commonly used mercury analyzer for skin-  
296 lightening products was cold vapor atomic absorption spectrometry (CVAAS) (59.2%), followed by  
297 atomic absorption spectroscopy (AAS) (11.9%), and inductively coupled plasma-optical emission  
298 spectrometry (ICP-OES) (9.9%) (Table S1). For human biomarker measurements, the most commonly  
299 used instrument was particle induced X-ray emission (PIXE) (14.2%), followed by advanced mercury  
300 analyzer (AMA) (5.6%), and AAS (3.8%) (Table S2). Notably, a detection instrument was not listed for  
301 768 (73.7%) of the biomarker measurements. Most “Mercury in products” (84%) and “Human  
302 biomarkers of exposure” (80%) studies considered analytical quality control measures by fully reporting  
303 on three of the four key items (measurement instrument, accuracy, precision, and detection limit). In total,  
304 eight quantitative studies reported no quality control measures since product and human biomarker  
305 samples in these studies were sent to external laboratories for analysis. As a result, these studies were  
306 carefully examined and deemed appropriate for inclusion. In terms of selection bias, all skin-lightening  
307 products and biomarker samples were conveniently sampled from stores and markets, and individuals,  
308 respectively.

309  
310 For the “Mercury in products” data group, four studies (16%) tested <10 products, 11 studies  
311 (44%) tested between 10-30 products, and 10 studies (40%) tested >30 products. For the “Human  
312 biomarkers of exposure” data group, five studies tested <50 biomarker samples, two studies (22.2%)  
313 tested between 50 and 200 biomarkers, and two studies (22.2%) tested >200 biomarker samples. User  
314 demographics (i.e., age, sex, location) were reported upon in all the “Human biomarkers of exposure”

315 studies, however most (84%) “Mercury in products” studies did not report on user demographics.  
316 Mercury exposure characteristics were only reported in four (16%) “Mercury in products” studies and in  
317 five (55.6%) “Human biomarkers of exposure” studies. In terms of other biases, only three (12%)  
318 “Mercury in products” studies did not list any descriptive measures (i.e., mean, upper values), whereas all  
319 “Human biomarkers of exposure” studies listed descriptive measures.

320

### 321 **3.3 “Mercury in products” Data Group**

322 In the analysis of skin-lightening products, we grouped products according to WHO regions of  
323 purchase and manufacture, product type, and mercury product concentration. A total of 787 skin-  
324 lightening products were identified from 25 studies which included creams (70.1%), soaps (19.3%), facial  
325 cream (4.6%), and other products (6.0%) (Excel Table S1). The overall pooled central median mercury  
326 concentration in skin-lightening products was 0.49 µg/g (IQR: 0.02 and 5.9 µg/g) (Figure 2). In Figure 2  
327 we excluded 49 skin-lightening products since mercury concentrations were only available as ranges and  
328 not discrete values. Mercury was an active ingredient (mercury concentration >1 µg/g) in 196 (24.9%)  
329 products. The mercury concentration varied across product types and geographic regions. While the  
330 average values of mercury in the various products were similar, the maximum reported value for creams  
331 was 314,387 µg/g, followed by facial cream (35,824 µg/g), soap (8,665 µg/g) and other products (2,700  
332 µg/g).

333

334 Most skin-lightening products were purchased in store (95.3%), with the procurement of the rest  
335 not reported by authors or mislabeled. None of the products reported the presence of phenyl mercuric  
336 salts or thiomersal, whereas 0.4% of creams reported containing ammoniated mercury. Skin-lightening  
337 products were manufactured in 33 countries mainly within Europe (22.6%), South-East Asia (8.4%), and  
338 African (7.8%) regions, versus those in the Americas (6.5%), Western-Pacific (2.9%), and Eastern-  
339 Mediterranean (2.9%) regions (Figure 3). The manufacture location was unknown or unlisted for nearly  
340 half (48.9%) of the products. Products were purchased in 20 countries within the African (55%), Eastern-

341 Mediterranean (20.5%), American (9.9%), Western-Pacific (9.4%), South-East Asian (3.4%) and Europe  
342 (1.8%) regions (Figure 4). Despite Europe manufacturing the largest quantity of products respective to the  
343 other regions, only 1.8% of skin-lightening were purchased in Europe.

344

### 345 **3.4 “Usage of products” Data Group**

346 A total of 3,898 individuals surveyed from 16 studies were included in the “Usage of products”  
347 data group (Excel Table S2). Not all the individuals were surveyed on all four key exposure  
348 characteristics (e.g., application, frequency, duration, quantity), and thus there are not 3,898 data points  
349 for each of the exposure characteristics. In terms of application, a total of 1,708 individuals from seven  
350 studies reported on application areas (e.g., face, body). Users were most likely to apply skin-lightening  
351 products to their face (53.1%) in comparison to “other” application areas (e.g., hands, neck, non-exposed  
352 sun areas) (22.4%) and whole body (18.6%). In one study, the sum of percentages exceeds 100% which  
353 may be attributed to individuals reporting on more than one application area (Alghamdi, 2010). In terms  
354 of frequency, we reported on information from a total of 2,525 individuals from 10 studies. From this  
355 data, most individuals were using products less than one time to three times per day (87.2%), more than  
356 three times per day (0.8%) and other unspecified times (8.6%). In terms of duration, we collected  
357 information from a total of 2,098 individuals from 10 studies. The duration of usage of skin-lightening  
358 products ranged between 1 month to 30 years. Out of 1,187 individuals surveyed from five studies, a total  
359 of 385 (32.4%) individuals used skin-lightening products from less than a year, 323 (27.2%) individuals  
360 used products between 1 to 5 years, 133 (11.2%) individuals used products between 6 to 10 years, 168  
361 (14.2%) individuals used products between 11 to 20 years, 100 (8.4%) individuals used products above  
362 20 years and 78 (6.6%) individuals used it for an unknown period of time (Alanzi et al., 2018; Brinton et  
363 al., 2018; Harada et al., 2001; Kinabo, 2005; Sendrasoa et al., 2017). A total of 4 studies reported on  
364 1,008 individuals that used skin-lightening products for a duration of 2 months to 30 years, and a total of  
365 157 and 105 individuals from two studies reported a mean duration period of between 20 and 26 months,  
366 respectively (Abbas et al., 2020; Alghamdi, 2010; Atadokpédé et al., 2015; Lartey et al., 2017; Ly et al.,

367 2007). In terms of quantity, we collected information from 1,015 individuals from four studies on the  
368 number of skin-lightening products used per month. From a total of 335 individuals, 94 (28%) individuals  
369 used less than and up to 10 g of product per month, 160 (47.8%) individuals used between 11 to 50 g of  
370 product per month, and 81 (24.2%) individuals used above 50 g of product per month (Abbas et al., 2020;  
371 Alanzi et al., 2018). In two studies, 703 (58.7%) individuals used between 2 to 600 g of product per  
372 month with 194 (16.2%) using a median of 95 g of product per month and 509 (42.5%) individuals using  
373 a median of 90 g of product per month (Alghamdi, 2010; Mahe et al., 2003).

374

### 375 **3.5 “Human biomarkers of exposure” Data Group**

376 A total of 1,042 biomarker samples (urine – 56.3%, hair – 26.1%, blood – 17.6%) were collected  
377 from 863 skin-lightening product users, family members of users, and control groups between 14 and 79  
378 years of age (Table 4). Only three studies (Abbas et al., 2020; Kinabo, 2005; McRill et al., 2000) included  
379 control groups (e.g., non-users, family members of users) to assess and compare biomarker  
380 concentrations.

381

#### 382 **3.5.1 Urine mercury levels**

383 Total mercury levels in urine across 569 skin-lightening product users from Hong Kong and US-  
384 Mexican border states (Arizona, California, New Mexico, and Texas) ranged between 0 and 770  $\mu\text{g/L}$   
385 (McKelvey et al., 2011; McRill et al., 2000; Sin & Tsang, 2003; Weldon et al., 2000). All of these studies  
386 used a reference value of 20  $\mu\text{g/L}$  to organize biomarker values which was based on the Departments of  
387 Health in Hong Kong, New York State, Arizona, California, New Mexico and Texas, and the Centers for  
388 Disease Control and Prevention (CDC) and the U.S. Environmental Protection Agency (U.S. EPA). A  
389 total of 383 (67.3%) skin-lightening product users had urinary mercury levels above the reference values.  
390 Urinary mercury levels were assessed in 18 family members (i.e., husbands and children) of mercury-  
391 added skin-lightening product users and nine (50%) of their concentrations were above the reference  
392 value.

393

### 394 **3.5.2 Blood mercury levels**

395 One study (Sin & Tsang, 2003) assessed total mercury levels in blood in addition to urinary  
396 mercury levels within 183 skin-lightening product users in Hong Kong. Blood mercury levels in users  
397 ranged from 0 to 82 µg/L with an overall median of 13 µg/L. This study used a reference value of 10 µg/L  
398 from the Department of Health in Hong Kong to organize biomarker values. A total of 119 (65%) users  
399 had blood mercury levels above the reference value.

400

### 401 **3.5.3 Hair mercury levels**

402 Total hair mercury levels across 183 skin-lightening product users in Japan, Indonesia, Tanzania  
403 and Iran ranged between 0 and 900 µg/g (Abbas et al., 2020; Fakour & Esmaili-Sari, 2014; Harada et al.,  
404 2001; Kanwal et al., 2019; Kinabo, 2005). We excluded participants from Iran (n=36) since mercury  
405 concentrations were not available as discrete values (Fakour & Esmaili-Sari, 2014). We used hair mercury  
406 reference value ranges of below 1 µg/g, between 1 to 5 µg/g and above 5 µg/g adopted by Abbas et al.  
407 (2020) to organize biomarkers. Out of 147 users, a total of 103 (70.1%) individuals had hair mercury  
408 concentrations above 5 µg/g, 34 (23.1%) individuals were between 1 to 5 µg/g, and 10 (6.8%) individuals  
409 were below 1 µg/g. The overall pooled central median of hair mercury concentrations was 51.1 µg/g  
410 (IQR: 30.3-135.3) across 147 users (Abbas et al., 2020; Harada et al., 2001; Kanwal et al., 2019; Kinabo,  
411 2005). Out of 63 non-users, 55 (87.3%) of individuals had hair mercury concentrations between 1 to 5  
412 µg/g, 7 (11.1%) individuals were below 1 µg/g, and 1 (0.7%) individual was above 5 µg/g.

413

### 414 **3.6 “Health impacts” Data Group**

415 A total of 832 individuals from Kenya, USA, Jamaica and Hong Kong (Harada et al., 2001;  
416 McRill et al., 2000; Ricketts et al., 2020; Sin & Tsang, 2003; Weldon et al., 2000) self-reported  
417 symptoms associated with mercury poisoning. Nine individuals (81.8%) from Kenya (Harada et al., 2001)  
418 experienced tremors, lassitude, vertigo, neurasthenia and black and white blots reported after clinical



419 examination through a questionnaire and undergoing a neurological test. In Jamaica, about 139  
420 individuals reported experiencing itchiness (39.6%), irritability (38.1%), and “other” (headaches,  
421 depression and scars) (22.3%) (Ricketts et al., 2020). In individuals in the USA, and Hong Kong (McRill  
422 et al., 2000; Sin & Tsang, 2003; Weldon et al., 2000) the most reported outcomes included fatigue  
423 (n=245), nervousness/irritability (n=252), severe headaches (n=268), weakness (n=209), insomnia  
424 (n=189), anxiety/depression (n=167), and memory loss (n=155), tremors (n=123), and body/joint pain  
425 (n=97) (Figure 5). Although most participants in the USA and Hong Kong had elevated mercury levels in  
426 urine and blood that significantly exceeded reference values, 78% of participants in Hong Kong reported  
427 no symptoms. One study (McRill et al., 2000) offered clinical evaluations for affected individuals but  
428 doctors found no abnormalities related to health.  
429

430

431 **4. Discussion**

432

433 To our knowledge, this is the first systematic literature review characterizing the amount  
434 of mercury that human populations worldwide are being exposed to through the use of mercury-added  
435 skin-lightening products. In doing so, we conclude that mercury is still widely prevalent in skin-  
436 lightening products in many countries worldwide, and that relatively high exposures to mercury from  
437 skin-lightening products likely mediate adverse health outcomes among users and members of their  
438 household. Our conclusions are based on the compilation, synthesis and analysis of a dataset that consists  
439 of 787 skin-lightening products (manufactured in 33 countries and purchased from 20 countries  
440 worldwide), 1,042 mercury biomarker measurements taken from 863 individuals, usage patterns from  
441 3,898 individuals, and self-reported health impacts from 832 individuals.

442

443 Mercury concentrations in skin-lightening products vary greatly among the products themselves,  
444 as well as among the studies and countries captured in this study. We are able to conclude this from our  
445 review of data from 787 skin-lightening products [(i.e., creams (70.1%), soaps (19.3%), facial cream  
446 (4.6%), and other products (6.0%)]. These products had mercury levels ranging from 0 to 314,387  $\mu\text{g/g}$   
447 with an overall pooled central median mercury concentration of 0.49  $\mu\text{g/g}$  (IQR: 0.02-5.9  $\mu\text{g/g}$ ). Mercury  
448 concentrations in skin-lightening products varied across geographic regions with the highest median  
449 concentrations found in products purchased in the Eastern-Mediterranean, South-East Asian, and Western  
450 Pacific regions. Although we had a relatively large dataset to draw conclusions from, geographical data  
451 gaps were evident. Most notably is the relative absence of data from Europe, Southeast Asia, and many  
452 Latin American countries even though these are regions with populations known to use skin-lightening  
453 products (Sagoe et al., 2019).

454

455 A total of 19 out of 25 studies identified at least one skin-lightening product with mercury as an  
456 active ingredient (i.e., mercury concentration  $>1 \mu\text{g/g}$ ). In addition to mercury, several studies have  
457 assessed other potentially toxic elements and chemical bleaching agents in skin-lightening products.  
458 Specifically, we note that 12 studies captured here evaluated only mercury, while 13 studies evaluated  
459 mercury in addition to other common active skin-lightening ingredients [e.g., hydroquinone, clobetasol  
460 propionate, kojic acid, corticosteroids (e.g., betamethasone, clobetasol propionate)] or trace elements  
461 [e.g., aluminum, arsenic, bismuth, cadmium, chromium, cobalt, copper, lead, iron, nickel, manganese,  
462 palladium, thallium, titanium, titanium dioxide, zinc] (Table S3). Some of these chemicals may be  
463 bioavailable, not easily metabolized by the body, and over time, cumulative exposures may contribute to a  
464 wide range of chronic health outcomes such as reproductive and developmental and neurological  
465 disorders, and renal damage (Bocca et al., 2014; Gbetoh & Amyot, 2016; Maneli et al., 2016).

466  
467 In terms of the use of mercury-added skin-lightening products, the findings from the Sagoe et al.  
468 (2019) review paper showed that mercury is the second most popular bleaching agent globally after  
469 topical corticosteroids. Individuals aged 30 years or younger had the highest prevalence of using skin-  
470 lightening products (55.9%), followed by individuals aged 31 to 49 years (25.9%) and lastly individuals  
471 aged 50 years and above (6.1%). Based on their results they concluded that the use of skin-bleaching  
472 transcends an individual's education level, relationship/marriage status, employment, and pregnancy stage  
473 (Sagoe et al., 2019). In our study, we found that there is great variability in skin-lightening product usage  
474 patterns across populations [i.e., application (i.e., face, whole body), frequency of application (per day),  
475 quantity used (g/month); and duration (months)]. Despite such variability, in general we conclude that  
476 most individuals who use these products apply skin-lightening items primarily on their face, typically  
477 from under 1 to 3 times per day, for less than a year, and use a quantity of 11 to 50 g per month. From this  
478 generalized conclusion, we can estimate mercury exposure for one year to be  $150 \mu\text{g}$  mercury through the  
479 following calculation: ( $0.5 \mu\text{g/g}$  mercury, which was the overall pooled central median mercury

480 concentration) \* (25 g product per month) \* 12 months. This estimate can significantly vary based on  
481 factors including product type and skin characteristics.

482

483 From the 2018 UN Global Mercury Assessment, it was determined that in background  
484 populations with insignificant exposures to mercury that individuals likely have mercury levels in blood,  
485 hair, and urine that are generally less than 5 µg/L, 2 µg/g, and 3 µg/L respectively (Basu et al., 2018). In  
486 the current study, we observe that most of the biomarker measures (i.e., median values) in users of skin-  
487 lightening products greatly exceeded the aforementioned levels found in background populations. We  
488 draw this conclusion from 1,042 biomarker measurements taken from 863 skin-lightening product users,  
489 family members and control groups. This is a relatively large mercury biomonitoring dataset though not  
490 one without challenges. Most of the data sets identified presented their biomarker data in relation to  
491 reference values set by their respective Departments of Health (McRill et al., 2000; Sin & Tsang, 2003;  
492 Weldon et al., 2000). While this made it challenging to make specific comparisons, we do note that the  
493 highest biomarker concentrations in these studies were well above their respective reference values. The  
494 studies with the largest sample sizes were case series studies of individuals with known exposure to  
495 different popular skin-lightening products in the U.S. (n=292 individuals from the U.S.-Mexican border  
496 region) (McRill et al., 2000; Weldon et al., 2000) and (n=286) users from Hong Kong (Sin & Tsang,  
497 2003). In these cases, the studies were conducted after numerous incidents of adverse reactions associated  
498 with using these products were reported to health officials, and thus we conclude that these may represent  
499 worst case scenarios. Deriving a control population in these studies is particularly challenging though  
500 among users in US-Mexican border states (Arizona, California, New Mexico, and Texas), urinary  
501 mercury concentrations in 50% of immediate family members (i.e., husbands, children) were relatively  
502 high (29-340 µg/L) (McRill et al., 2000). This illustrates that mercury exposures among those who are in  
503 close proximity with users may also be elevated. Similar cases have been seen among pesticide  
504 applicators, where spouses and children of farmers had detectable levels of glyphosate in their urine  
505 without being present during the application process (Acquavella et al., 2004). Therefore, in addition to

506 the users themselves, it is important to study family members and individuals who are in close proximity  
507 to skin-lightening product users to better understand their exposures and associated health risks.

508

509 Through our search, we flagged case reports in which health outcomes were observed in  
510 association with the use of mercury-added skin-lightening products (Table S4). Case reports are detailed  
511 medical reports that describe novel or unusual occurrence in patients and shared for scientific and  
512 educational purposes. Here, a total of 16 case report studies were compiled from seven countries  
513 (Barbados, China, USA, Belgium, UK, Philippines, and Mexico, Germany) with 37 individuals (users and  
514 non-users) between the ages of 10-months and 50 years old. The skin-lightening products mentioned had  
515 mercury concentrations between 1,762 and 56,000  $\mu\text{g/g}$  mercury (versus 0.5  $\mu\text{g/g}$ , which was the overall  
516 pooled central median mercury concentration we calculated here) or contained 0.07-6.5% mercury. Five  
517 individuals mentioned using products between six weeks to 10 years before reporting symptoms. The case  
518 reports showed that some individuals have very high levels of total mercury in urine (max=170  $\mu\text{g/L}$ ) and  
519 blood (max=2,620  $\mu\text{g/L}$ ), and inorganic mercury in hair (max=5,617  $\mu\text{g/g}$ ). Individuals in these cases  
520 studies presented signs of mercury intoxication, nephrotic syndrome, membranous glomerulonephritis,  
521 and hypertension. There were four reported cases of infants under the age of five that presented signs of  
522 mercury intoxication after being in contact with their mothers that were using mercury-added skin-  
523 lightening products (Copan et al., 2015; Kamani et al., 2019; Ori et al., 2018). The youngest reported case  
524 was a 10-month-old toddler who was admitted to the hospital after presenting symptoms including  
525 anorexia, hypertension, and regression in neuro-motor skills after his mother used a skin-lightening  
526 product locally made in Mexico containing 56,000  $\mu\text{g/g}$  of mercury for six weeks prior to symptom onset  
527 (Kamani et al., 2019).

528

529 To characterize mercury exposures through the use of skin-lightening items, it is important to  
530 understand the trade of these products. Almost half (48.9%) of the products identified [i.e., cream  
531 (n=233), soap (n=109), facial cream (n=2), other (n=41)] did not indicate the country that they were

532 manufactured in, and thus we could not identify where a large majority of skin-lightening products hail  
533 from. When the manufacturing location was noted, Europe, South-East Asia, and Africa were most  
534 prominent. Our review also noted countries in Europe (France, Italy, Spain, and the U.K.) as well as the  
535 U.S. that manufactured skin-lightening products with high concentrations of mercury. Regulating skin-  
536 lightening products in low-income countries is particularly challenging since these regions may not have  
537 regulations, and those that do are largely unenforced (Michalek, Benn, et al., 2019). In contrast, the  
538 European Union Rapid Alert System for dangerous non-food products (RAPEX) identified about 266  
539 skin-lightening cosmetic import violations across Europe between 2005-2018, of which 15.4% contained  
540 mercury (Michalek, Liu, et al., 2019). From our findings, skin-lightening products containing mercury as  
541 an active ingredient (mercury concentration  $>1 \mu\text{g/g}$ ) were mainly manufactured in the Dominican  
542 Republic, Mexico, Pakistan, and Thailand, similar to where the European Union RAPEX and the U.S.  
543 FDA have reported import violations. We found that the skin-lightening products were purchased mainly  
544 in Africa, the Eastern Mediterranean, the Americas and Western Pacific regions (according to WHO  
545 classifications), and that this is in line with where these products are most commonly used (Peregrino et  
546 al., 2011; Prevodnik et al., 2018; Sagoe et al., 2019). We found that the number of countries that  
547 manufacture products ( $n=33$ ) is greater than the number of countries in which they were purchased  
548 ( $n=20$ ), supporting the need for stronger enforcement of existing legislation and increased restrictions on  
549 mercury in skin-lightening products.

550  
551 Despite performing a systematic review and compiling a relatively large dataset to draw  
552 conclusions from, there are some limitations of this work (from which recommendations are offered).  
553 Foremost is that the studies identified in this review tended to focus on geographic regions with known  
554 prevalence and concerns surrounding mercury-added skin-lightening products. Even in well-studied  
555 geographic regions, the sample sizes in individual works were relatively small. Further, all studies  
556 suffered from sampling bias (non-randomization) making it difficult to generalize. As a result, there is not  
557 enough representative data to conclude with high certainty the quantity of skin-lightening products

558 containing mercury and the number of affected individuals worldwide. Nonetheless, our approach was  
559 able to derive a dataset from which we can suggest that mercury is still widely prevalent as an active  
560 ingredient (mercury concentration  $>1 \mu\text{g/g}$ ) in many skin-lightening products worldwide, and that  
561 exposures among users is relatively high. These represent a good start and moving forward there is a need  
562 for more quality studies in this area.

563

564 Most individual biomarker concentrations in studies were either not stated or grouped together  
565 based on reference values set out by various agencies and health departments. Aside from the case series  
566 studies, biomarker studies generally sampled small groups of individuals likely due to the difficulty in  
567 isolating individual users and the negative stigma surrounding usage of skin-lightening products. There  
568 were very few studies collected that looked at control groups and non-users in the same areas or in areas  
569 where there are no suspected concerns. It can be difficult to isolate mercury exposures from the use of  
570 skin-lightening products, versus other notable sources (e.g., dental amalgams or seafood consumption).  
571 To help tease apart exposures to different chemical forms and sources of mercury, detailed survey  
572 instruments can be coupled with human biomarker measurements (Basu et al., 2018; UNEP/WHO, 2008).  
573 Mercury in hair generally reflects exposure to organic methylmercury (usually from the diet) though  
574 external contamination by mercury-added skin lightening products may complicate this measure and  
575 necessitate the use of advanced mercury speciation techniques. Mercury in urine reflects exposure to  
576 inorganic and elemental forms of mercury, and as a non-invasive and relatively inexpensive biomarker to  
577 sample this may be particularly attractive in exposure assessment studies (Basu et al., 2018). Finally,  
578 mercury in whole blood can provide information on recent exposures to both organic and inorganic  
579 mercury. In general, total mercury values are measured in hair, urine, or blood, though studies that  
580 employ chemical speciation or mercury stable isotope measures can glean data from which deeper  
581 understandings may be realized. With relatively simple training on sampling principles and quality  
582 assurance practices, human biomonitoring studies can be added to health studies in this area to help  
583 increase understanding of exposures.

584

585 All studies included in this review assessed skin-lightening products for the concentration of total  
586 mercury and assessed products using reliable instrumentation. The study quality of most studies was  
587 moderately ranked. We assessed study quality using the guidance from the framework published by Hu et  
588 al. (2018) and OHAT (2015) and found numerous issues in terms of exposure detection bias (e.g., need  
589 more information on quality control techniques including the use of reference materials and replicate  
590 measures especially for studies that sent samples to external laboratories for analysis), selection bias (e.g.,  
591 need studies to carefully report on sampling techniques and breakdown of individuals concentrations of  
592 mercury in biomarker samples, and include more information on mercury exposure characteristics), and  
593 other biases (e.g., studies need to have more information on user demographics and concentrations of  
594 mercury that individuals are using to better understand mercury levels in biomarkers). As a result, we  
595 excluded 134 skin-lightening product samples from three studies (Hamann et al., 2014; Murphy et al.,  
596 2009; Ricketts et al., 2020) that used XRF analyzers and commercial screening kits. There are many  
597 concerns surrounding the validity and reliability of measurements taken from XRF instruments and  
598 screening kits since they do not have low detection limits or analytical reliability like CVAAS, ICP-MS  
599 or ICP-OES (McComb et al., 2014). Moving forward, we advocate that laboratories strengthen their  
600 capacity to test these products using higher quality measures (e.g., CVAAS, ICP-MS, AAS, PIXIE).

601

602 The Minamata Convention is driven by protecting human health (i.e., Articles 1, 16, 17, 19) and  
603 one means for increasing public information, awareness and education (Article 18) is to educate the  
604 public on the effects and exposure of mercury and mercury compounds on human health in collaboration  
605 with other relevant intergovernmental and non-governmental organizations (UNEP, 2019). Although the  
606 skin-lightening products industry generates billions of dollars annually, the products identified in this  
607 review represent a very small portion of the global inventory (Glenn, 2008). There is a strong need to  
608 create advocacy campaigns led by local health agencies and civil society to increase awareness and  
609 educate the community of the adverse health implications associated with skin-lightening, specifically



610 skin-lightening products containing mercury. Advocacy campaigns run by national health authorities,  
611 governments and members of the public need to work together to educate users on the potential dangers  
612 of using mercury-added skin-lightening products. National programs to harmonize biomonitoring of  
613 exposed individuals need to be pursued in order to increase our understanding of human exposures.  
614 Governments need to create collaborative inventories of products with harmful levels of mercury, create  
615 legislation, and establish standards (e.g., contact information of manufacturer, country of manufacture,  
616 ingredient list) for imported products. There is a need for all retailers (e.g., stores, vendors, online) to be  
617 monitored by law enforcement and required to remove products that contain harmful levels of mercury.  
618

619 **5. Conclusion**

620

621           The objective of this study was to increase our understanding of worldwide human mercury  
622 exposure and associated health risks from the use of skin-lightening products. To achieve this, we  
623 conducted a systematic review to collect and analyze data from 41 peer-reviewed papers, within which we  
624 further examined mercury concentrations in human biomarkers and skin-lightening product samples,  
625 along with usage patterns and associated health impacts. From this work, we can conclude that mercury  
626 widely exists as an active ingredient in skin-lightening products and that there is large variability in  
627 human exposures. While knowledge gaps and limitations exist (e.g., non-random selection bias,  
628 geographic regions with no data), these synthesized findings help increase our understanding of the health  
629 risks associated with the use of these products. In addition, we believe that the information in this study  
630 will be critical in helping regulatory agencies and inter-governmental organizations, particularly the  
631 Minamata Convention on Mercury and the WHO, better understand the global prevalence of mercury-  
632 added skin-lightening products over space and time.

633

634 **References**

- 635 Ababneh, F. A., & Al-Momani, I. F. (2018). Assessments of toxic heavy metals contamination in  
636 cosmetic products. *Environ. Forensics*, *19*(2), 134–142.  
637 <https://doi.org/10.1080/15275922.2018.1448908>.
- 638 Abbas, H. H., Sakakibara, M., Sera, K., Nurgahayu, & Andayani, E. (2020). Mercury exposure and  
639 health problems of the students using skin-lightening cosmetic products in Makassar, South  
640 Sulawesi, Indonesia. *Cosmet.*, *7*(3). <https://doi.org/10.3390/cosmetics7030058>.
- 641 Acquavella, J. F., Alexander, B. H., Mandel, J. S., Gustin, C., Baker, B., & Chapman, P. (2004).  
642 Glyphosate biomonitoring for farmers and their families: Results from the farm family exposure  
643 study. *Environ. Health Perspect.*, *112*(3), 321–326. PMID: 14998747,  
644 <https://doi.org/10.1289/ehp.6667>.
- 645 Agorku, E. S., Kwaansa-Ansah, E. E., Voegborlo, R. B., Amegbletor, P., & Opoku, F. (2016). Mercury  
646 and hydroquinone content of skin toning creams and cosmetic soaps, and the potential risks to the  
647 health of Ghanaian women. *Springerplus*, *5*(319), 1-5. PMID: 27065161,  
648 <https://doi.org/10.1186/s40064-016-1967-1>.
- 649 Al-Saleh, I., & Al-Doush, I. (1997). Mercury content in skin-lightening creams and potential hazards to  
650 the health of Saudi women. *J. Toxicol. Environ. Health*, *51*(2), 123–130. PMID: 9176553,  
651 <https://doi.org/10.1080/00984109708984016>.
- 652 Al-Saleh, I., Elkhatib, R., Al-Rouqi, R., Al-Enazi, S., & Shinwari, N. (2012). The dangers of skin-  
653 lightening creams. *Toxicol. Environ. Chem.*, *94*(1), 195–219.  
654 <https://doi.org/10.1080/02772248.2011.631925>
- 655 Alanzi, M. E., Alghamdi, R. A., Alsharif, O. M., Alghamdi, K. S., & El Sayed, S. M. (2018). Health  
656 knowledge, cosmetic interests, attitude, and the need for health education regarding the use of  
657 topical bleaching agents among women in West Saudi Arabia: A cross-sectional study. *J. Cosmet.*  
658 *Sci.*, *69*(2), 101–120. PMID: 29799808.
- 659 Alghamdi, K. M. (2010). The use of topical bleaching agents among women: A cross-sectional study of

- 660 knowledge, attitude and practices. *J. Eur. Acad. Dermatol. and Venereol.*, 24(10), 1214–1219.
- 661 PMID: 20236376, <https://doi.org/10.1111/j.1468-3083.2010.03629.x>
- 662 Alqadami, A. A., Abdalla, M. A., AlOthman, Z. A., & Omer, K. (2013). Application of solid phase  
663 extraction on multiwalled carbon nanotubes of some heavy metal ions to analysis of skin whitening  
664 cosmetics using ICP-AES. *Int. J. Environ. Res. Public Health.*, 10(1), 361–374. PMID: 23343988,  
665 <https://doi.org/10.3390/ijerph10010361>.
- 666 Alqadami, A. A., Naushad, M., Abdalla, M. A., Khan, M. R., Alothman, Z. A., Wabaidur, S. M., &  
667 Ghfar, A. A. (2017). Determination of heavy metals in skin-whitening cosmetics using microwave  
668 digestion and inductively coupled plasma atomic emission spectrometry. *IET Nanobiotechnol.*,  
669 11(5), 597–603. PMID: 28745295, <https://doi.org/10.1049/iet-nbt.2016.0212>.
- 670 Amponsah, D., Voegborlo, R., & Sebiawu, G. E. (2014). Determination of amount of mercury in some  
671 selected skin-lightening creams sold in the Ghanaian market. *Int. J. Eng. Res. Technol.*, 5(6), 544–  
672 550. ISSN: 2278-0181.
- 673 Ashraf, T., Taneez, M., Kalsoom, S., Irfan, T., & Shafique, M. A. (2020). Experimental calculations of  
674 metals content in skin-whitening creams and theoretical investigation for their biological effect  
675 against tyrosinase enzyme. *Bio. Trace Elem. Res.*, 199, 3562–3569. PMID: 33079299,  
676 <https://doi.org/10.1007/s12011-020-02441-z>.
- 677 Atadokpédé, F., Adégbidi, H., Koudoukpo, C., Téleclessou, J., Aholoukpé, C., Degboé, B., Ango-Padonou,  
678 F. do, & Yedomon, H. (2015). Epidemiological and clinical aspects of skin bleaching in secondary  
679 school in Bohicon, Benin. *J. Cosmet. Dermatol. Sci. Appl.*, 05(01), 1–6.  
680 <https://doi.org/10.4236/jcdsa.2015.51001>.
- 681 Basu, N., Horvat, M., Evers, D. C., Zastenskaya, I., Weihe, P., & Tempowski, J. (2018). A state-of-the-  
682 science review of mercury biomarkers in human populations worldwide between 2000 and 2018.  
683 *Environ. Health Perspect.*, 126(10), 1–14. PMID: 30407086, <https://doi.org/10.1289/EHP3904>.
- 684 Bocca, B., Pino, A., Alimonti, A., & Forte, G. (2014). Toxic metals contained in cosmetics: A status  
685 report. *Regul. Toxicol. Pharmacol.*, 68(3), 447–467. PMID: 24530804,

- 686 <https://doi.org/10.1016/j.yrtph.2014.02.003>.
- 687 Bose-O'Reilly, S., McCarty, K. M., Steckling, N., & Lettmeier, B. (2010). Mercury exposure and  
688 children's health. *Curr. Probl. Pediatr. Adolesc. Health Care*, 40(8), 186–215. PMID: 20816346,  
689 <https://doi.org/10.1016/j.cppeds.2010.07.002>.
- 690 Brinton, L. A., Figueroa, J. D., Ansong, D., Nyarko, K. M., Wiafe, S., Yarney, J., Biritwum, R.,  
691 Brotzman, M., Thistle, J. E., Adjei, E., Aitpillah, F., Dedey, F., Edusei, L., Titiloye, N., Awuah, B.,  
692 Clegg-Lampsey, J. N., Wiafe-Addai, B., & Vanderpuye, V. (2018). Skin lighteners and hair relaxers  
693 as risk factors for breast cancer: results from the Ghana breast health study. *Carcinogenesis*, 39(4),  
694 571–579. PMID: 29324997, <https://doi.org/10.1093/carcin/bgy002>.
- 695 Chan, T. Y. K. (2011). Inorganic mercury poisoning associated with skin-lightening cosmetic products.  
696 *Clin. Toxicol. (Phila.)*, 49(10), 886–891. PMID: 22070559,  
697 <https://doi.org/10.3109/15563650.2011.626425>.
- 698 Chen, J., Ye, Y., Ran, M., Li, Q., Ruan, Z., & Jin, N. (2020). Inhibition of tyrosinase by mercury chloride:  
699 Spectroscopic and docking studies. *Front. Pharmacol.*, 11(81). PMID: 32210794,  
700 <https://doi.org/10.3389/fphar.2020.00081>.
- 701 Copan, L., Fowles, J., Barreau, T., & McGee, N. (2015). Mercury toxicity and contamination of  
702 households from the use of skin creams adulterated with mercurous chloride (calomel). *Int. J.*  
703 *Environ. Res. Public Health*, 12(9), 10943–10954. PMID: 26364641,  
704 <https://doi.org/10.3390/ijerph120910943>.
- 705 Counter, S. A., & Buchanan, L. H. (2004). Mercury exposure in children: A review. *Toxicol. Appl.*  
706 *Pharmacol.*, 198(2), 209–230. PMID: 15236954, <https://doi.org/10.1016/j.taap.2003.11.032>.
- 707 Cristaudo, A., D'Ilio, S., Gallinella, B., Mosca, A., Majorani, C., Violante, N., Senofonte, O., Morrone,  
708 A., & Petrucci, F. (2013). Use of potentially harmful skin-lightening products among immigrant  
709 women in Rome, Italy: A pilot study. *Dermatology*, 226(3), 200–206. PMID: 23751225,  
710 <https://doi.org/10.1159/000348706>.
- 711 Dadzie, O. E., & Petit, A. (2009). Skin bleaching: Highlighting the misuse of cutaneous depigmenting

- 712 agents. *J. Eur. Acad. Dermatol. Venereol.*, 23(7), 741–750. PMID: 19470077,  
713 <https://doi.org/10.1111/j.1468-3083.2009.03150.x>.
- 714 Denton, C. R., Lerner, A. B., & Fitzpatrick, T. B. (1952). Inhibition of melanin formation by chemical  
715 agents. *J. Invest. Dermatol.*, 18(2), 119–135. PMID: 14908188, <https://doi.org/10.1038/jid.1952.16>.
- 716 Eagles-Smith, C. A., Silbergeld, E. K., Basu, N., Bustamante, P., Diaz-Barriga, F., Hopkins, W. A., Kidd,  
717 K. A., & Nyland, J. F. (2018). Modulators of mercury risk to wildlife and humans in the context of  
718 rapid global change. *Ambio.*, 47(2), 170–197. PMID: 29388128, [https://doi.org/10.1007/s13280-](https://doi.org/10.1007/s13280-017-1011-x)  
719 [017-1011-x](https://doi.org/10.1007/s13280-017-1011-x).
- 720 Fakour, H., & Esmaili-Sari, A. (2014). Occupational and environmental exposure to mercury among  
721 Iranian hairdressers. *J. Occup. Health*, 56(1), 56–61. PMID: 24270924,  
722 <https://doi.org/10.1539/joh.13-0008-OA>.
- 723 Gbetoh, M. H., & Amyot, M. (2016). Mercury, hydroquinone and clobetasol propionate in skin lightening  
724 products in West Africa and Canada. *Environ. Res.*, 150, 403–410. PMID: 27372064,  
725 <https://doi.org/10.1016/j.envres.2016.06.030>.
- 726 Glahder, C. M., Appel, P. W. U., & Asmund, G. (1999). Mercury in soap in Tanzania. *Technical Report*  
727 *No. 306. National Environmental Research Institute, Denmark (NERI)*, 306, 19.
- 728 Glenn, E. N. (2008). Yearning for lightness: Transnational circuits in the marketing and consumption of  
729 skin lighteners. *Gender and Society*, 22(3), 281–302. <https://doi.org/10.1177/0891243208316089>.
- 730 Government of Canada. (2012). *Guidance on Heavy Metal Impurities in Cosmetics*. Government of  
731 Canada. [https://www.canada.ca/en/health-canada/services/consumer-product-safety/reports-](https://www.canada.ca/en/health-canada/services/consumer-product-safety/reports-publications/industry-professionals/guidance-heavy-metal-impurities-cosmetics.html#a324)  
732 [publications/industry-professionals/guidance-heavy-metal-impurities-cosmetics.html#a324](https://www.canada.ca/en/health-canada/services/consumer-product-safety/reports-publications/industry-professionals/guidance-heavy-metal-impurities-cosmetics.html#a324).  
733 [accessed 30 June 2021].
- 734 Ha, E., Basu, N., Bose-O'Reilly, S., Dórea, J. G., McSorley, E., Sakamoto, M., & Chan, H. M. (2017).  
735 Current progress on understanding the impact of mercury on human health. *Environ. Res.*, 152, 419–  
736 433. PMID: 27444821, <https://doi.org/10.1016/j.envres.2016.06.042>.
- 737 Hamann, C. R., Boonchai, W., Wen, L., Sakanashi, E. N., Chu, C.-Y., Hamann, K., Hamann, C. P.,

- 738 Sinniah, K., & Hamann, D. (2014). Spectrometric analysis of mercury content in 549 skin-lightening  
739 products: Is mercury toxicity a hidden global health hazard? *J. Am. Acad. Dermatol.*, 70(2), 281-  
740 287. e3. PMID: 24321702, <https://doi.org/10.1016/j.jaad.2013.09.050>.
- 741 Harada, M., Nakachi, S., Tasaka, K., Sakashita, S., Muta, K., Yanagida, K., Doi, R., Kizaki, T., & Ohno,  
742 H. (2001). Wide use of skin-lightening soap may cause mercury poisoning in Kenya. *Sci. Total*  
743 *Environ.*, 269(1–3), 183–187. PMID: 11305339, [https://doi.org/10.1016/S0048-9697\(00\)00812-3](https://doi.org/10.1016/S0048-9697(00)00812-3).
- 744 Ho, Y. Bin, Abdullah, N. H., Hamsan, H., & Tan, E. S. S. (2017). Mercury contamination in facial skin  
745 lightening creams and its health risks to user. *Regul. Toxicol. Pharmacol.*, 88, 72–76. PMID:  
746 28554823, <https://doi.org/10.1016/j.yrtph.2017.05.018>.
- 747 Hu, X. F., Singh, K., & Chan, L. H. M. (2018). Mercury exposure, blood pressure, and hypertension: A  
748 systematic review and dose–response meta-analysis. *Environ. Health Perspect.*, 126(7), 076002.  
749 PMID: 30073953, <https://doi.org/10.1289/EHP2863>.
- 750 Kamani, A., Au, H., Copes, R., Thompson, M., & Ito, S. (2019). Pediatric mercury poisoning from  
751 indirect exposure to skin cream. *Clin. Toxicol.*, 57(10), 1011.
- 752 Kanwal, S., Yamakawa, A., Narukawa, T., & Yoshinaga, J. (2019). Speciation and isotopic  
753 characterization of mercury detected at high concentration in Pakistani hair samples. *Chemosphere*,  
754 233, 705–710. PMID: 31195275, <https://doi.org/10.1016/j.chemosphere.2019.05.275>.
- 755 Kinabo, C. (2005). Comparative analysis of mercury content in human hair and cosmetic products used in  
756 Dar es Salaam, Tanzania. *Tanz. J. Sci.*, 31(1). <https://doi.org/10.4314/tjs.v31i1.18412>.
- 757 Ladizinski, B., Mistry, N., & Kundu, R. V. (2011). Widespread use of toxic skin lightening compounds:  
758 Medical and psychosocial aspects. *Dermatol. Clin.*, 29(1), 111-123. PMID: 21095535,  
759 <https://doi.org/10.1016/j.det.2010.08.010>.
- 760 Lartey, M., Krampa, F. D., Abdul-Rahman, M., Quarcoo, N. L., Yamson, P., Hagan, P. G., Tettey, Y.,  
761 Gyasi, R., & Adjei, A. A. (2017). Use of skin-lightening products among selected urban  
762 communities in Accra, Ghana. *Int. J. Dermatol.*, 56(1), 32–39. PMID: 27943305,  
763 <https://doi.org/10.1111/ijd.13449>.

- 764 Lerner, A. B. (1952). Effect of ions on melanin formation. *J. Invest. Dermatol.*, 18(1), 47–52. PMID:  
765 14908178, <https://doi.org/10.1038/jid.1952.6>.
- 766 Lewis, K. M., Robkin, N., Gaska, K., & Njoki, L. C. (2011). Investigating motivations for women’s skin  
767 bleaching in Tanzania. *Psychol. Women Q.*, 35(1), 29–37.  
768 <https://doi.org/10.1177/0361684310392356>.
- 769 Ly, F., Soko, A. S., Dione, D. A., Niang, S. O., Kane, A., Bocoum, T. I., Dieng, M. T., & Ndiaye, B.  
770 (2007). Aesthetic problems associated with the cosmetic use of bleaching products. *Int. J.*  
771 *Dermatol.*, 46(Suppl. 1), 15–17. PMID: 17919199, [https://doi.org/10.1111/j.1365-](https://doi.org/10.1111/j.1365-4632.2007.03456.x)  
772 [4632.2007.03456.x](https://doi.org/10.1111/j.1365-4632.2007.03456.x).
- 773 Mahe, A., Ly, F., Aymard, G., & Dangou, J. M. (2003). Skin diseases associated with the cosmetic use of  
774 bleaching products in women from Dakar, Senegal. *Br. J. Dermatol.*, 148(3), 493–500. PMID:  
775 12653741, <https://doi.org/10.1046/j.1365-2133.2003.05161.x>.
- 776 Maneli, M. H., Wiesner, L., Tinguely, C., Davids, L. M., Spengane, Z., Smith, P., van Wyk, J. C., Jardine,  
777 A., & Khumalo, N. P. (2016). Combinations of potent topical steroids, mercury and hydroquinone  
778 are common in internationally manufactured skin-lightening products: a spectroscopic study. *Clin.*  
779 *Exp. Dermatol.*, 41(2), 196–201. PMID: 26211494, <https://doi.org/10.1111/ced.12720>.
- 780 McComb, J. Q., Rogers, C., Han, F. X., & Tchounwou, P. B. (2014). Rapid screening of heavy metals and  
781 trace elements in environmental samples using portable X-ray fluorescence spectrometer, A  
782 comparative study. *Water Air Soil Pollut.*, 225(12). PMID: 25861136,  
783 <https://doi.org/10.1007/s11270-014-2169-5>.
- 784 McKelvey, W., Jeffery, N., Clark, N., Kass, D., & Parsons, P. J. (2011). Population-based inorganic  
785 mercury biomonitoring and the identification of skin care products as a source of exposure in New  
786 York City. *Environ. Health Perspect.*, 119(2), 203–209. PMID: 20923743,  
787 <https://doi.org/10.1289/ehp.1002396>.
- 788 McRill, C., Boyer, L. V, Flood, T. J., & Ortega, L. (2000). Mercury toxicity due to use of a cosmetic  
789 cream. *J. Occup. Environ. Med.*, 42(1), 4–7. PMID: 10652682.



- 790 Michalek, I. M., Benn, E. K. T., dos Santos, F. L. C., Gordon, S., Wen, C., & Liu, B. (2019). A  
791 systematic review of global legal regulations on the permissible level of heavy metals in cosmetics  
792 with particular emphasis on skin lightening products. *Environ. Res.*, *170*, 187–193. PMID:  
793 30583128, <https://doi.org/10.1016/j.envres.2018.12.029>.
- 794 Michalek, I. M., Liu, B., Benn, E. K. T., & Caetano dos Santos, F. L. (2019). Skin lightning products’  
795 violations in Europe: An analysis of the rapid alert system for dangerous non-food products 2005–  
796 2018. *Regul. Toxicol. Pharmacol.*, *106*, 50–54. PMID: 31029853,  
797 <https://doi.org/10.1016/j.yrtph.2019.04.020>.
- 798 Mohammed, T., Mohammed, E., & Bascombe, S. (2017). The evaluation of total mercury and arsenic in  
799 skin bleaching creams commonly used in Trinidad and Tobago and their potential risk to the people  
800 of the Caribbean. *J. Public Health Res.*, *6*(3), 1097. PMID: 29291194,  
801 <https://doi.org/10.4081/jphr.2017.1097>.
- 802 Murphy, T., Slotton, D. G., Irvine, K., Sukontason, K., & Goldman, C. R. (2009). Mercury contamination  
803 of skin whiteners in Cambodia. *Hum. Ecol. Risk Assess.*, *15*(6), 1286–1303.  
804 <https://doi.org/10.1080/10807030903306877>.
- 805 OHAT. [U.S. National Toxicology Program (NTP) Office of Health Assessment and Translation  
806 (OHAT)]. 2015. OHAT Risk of Bias Tool for Human and Animal Studies.  
807 [https://ntp.niehs.nih.gov/ntp/ohat/pubs/riskofbiastool\\_508.pdf](https://ntp.niehs.nih.gov/ntp/ohat/pubs/riskofbiastool_508.pdf) [accessed 7 Decemeber 2020].
- 808 Olumide, Y. M., Akinkugbe, A. O., Altraide, D., Mohammed, T., Ahamefule, N., Ayanlowo, S.,  
809 Onyekonwu, C., & Essen, N. (2008). Complications of chronic use of skin lightening cosmetics. *Int.*  
810 *J. Dermatol.*, *47*(4), 344–53. PMID: 18377596, <https://doi.org/10.1111/j.1365-4632.2008.02719.x>.
- 811 Ori, M. R., Larsen, J. B., & Shirazi, F. M. (2018). Mercury poisoning in a toddler from home  
812 contamination due to skin lightening cream. *J. Pediatr.*, *196*, 314–317. e1. PMID: 29395180,  
813 <https://doi.org/10.1016/j.jpeds.2017.12.023>.
- 814 Osei, M., Ali, M., Owusu, A., & Baiden, F. (2018). Skin-lightening practices among female high school  
815 students in Ghana. *Public Health*, *155*, 81–87. PMID: 29328977,

- 816 <https://doi.org/10.1016/j.puhe.2017.11.016>.
- 817 Palmer, R. B., Godwin, D. A., & McKinney, P. E. (2000). Transdermal kinetics of a mercurous chloride  
818 beauty cream: an in vitro human skin analysis. *J. Toxicol. Clin. Toxicol.*, 38(7), 701–707. PMID:  
819 11192457, <https://doi.org/10.1081/clt-100102383>.
- 820 Peltzer, K., Pengpid, S., & James, C. (2016). The globalization of whitening: Prevalence of skin  
821 lighteners (or bleachers) use and its social correlates among university students in 26 countries. *Int.*  
822 *J. Dermatol.*, 55(2), 165–172. PMID: 26472662, <https://doi.org/10.1111/ijd.12860>.
- 823 Peregrino, C. P., Moreno, M. V., Miranda, S. V., Rubio, A. D., & Leal, L. O. (2011). Mercury levels in  
824 locally manufactured Mexican skin-lightening creams. *Int. J. Environ. Res. Public Health*, 8(6),  
825 2516–2523. PMID: 21776243, <https://doi.org/10.3390/ijerph8062516>.
- 826 Prevodnik, A., Willcox, A., Lymberidi-Settimo, E., Bender, M., & Lane, O. (2018). Mercury-added skin  
827 lightening creams. *European Environmental Bureau* (Issue November).
- 828 Ricketts, P., Knight, C., Gordon, A., Boischio, A., & Voutchkov, M. (2020). Mercury exposure associated  
829 with use of skin lightening products in Jamaica. *J. Health Pollut.*, 10(26). PMID: 32509402,  
830 <https://doi.org/10.5696/2156-9614-10.26.200601>.
- 831 Sagoe, D., Pallesen, S., Dlova, N. C., Lartey, M., Ezzedine, K., & Dadzie, O. (2019). The global  
832 prevalence and correlates of skin bleaching: a meta-analysis and meta-regression analysis. *Int. J.*  
833 *Dermatol.*, 58(1), 24–44. PMID: 29888464, <https://doi.org/10.1111/ijd.14052>.
- 834 Salama, A. K. (2016). Assessment of metals in cosmetics commonly used in Saudi Arabia. *Environ.*  
835 *Monit. Assess.*, 188(10), 553. PMID: 27613289, <https://doi.org/10.1007/s10661-016-5550-6>.
- 836 Selvaraju, A., Abdul Halim, A. N. S., & Keyon, A. S. A. (2020). Determination of selected heavy metal  
837 concentrations in unregistered face whitening creams sold in Johor Bahru, Johor, Malaysia by using  
838 inductively coupled plasma optical emission spectroscopy and their health risk assessment.  
839 *Malaysian J. Anal. Sci.*, 24(5), 670–681.
- 840 Sendrasoa, F. A., Ranaivo, I. M., Andrianarison, M., Raharolahy, O., Razanakoto, N. H., Ramarozatovo,  
841 L. S., & Rapelanoro Rabenja, F. (2017). Misuse of topical corticosteroids for cosmetic purpose in

- 842 Antananarivo, Madagascar. *Biomed. Res. Int.* <https://doi.org/10.1155/2017/9637083>.
- 843 Sheehan, M. C., Burke, T. A., Navas-Acien, A., Breysse, P. N., McGready, J., & Fox, M. A. (2014).  
844 Global methylmercury exposure from seafood consumption and risk of developmental  
845 neurotoxicity: A systematic review. *Bull. World Health Organ.*, 92(4), 254-269F. PMID: 24700993,  
846 <https://doi.org/10.2471/blt.12.116152>.
- 847 Sin, K. W., & Tsang, H. F. (2003). Large-scale mercury exposure due to a cream cosmetic: Community-  
848 wide case series. *Hong Kong Med. J.*, 9(5), 329–334. PMID: 14530526.
- 849 Smith, R. L. (1991). *Regional Guidance on Handling Chemical Concentration Data Near the Detection*  
850 *Limit in Risk Assessments*. U.S. EPA (U.S. Environmental Protection Agency).  
851 [https://www.epa.gov/risk/regional-guidance-handling-chemical-concentration-data-near-detection-](https://www.epa.gov/risk/regional-guidance-handling-chemical-concentration-data-near-detection-limit-risk-assessments)  
852 [limit-risk-assessments](https://www.epa.gov/risk/regional-guidance-handling-chemical-concentration-data-near-detection-limit-risk-assessments) [accessed 10 February 2021].
- 853 Traore, A., Kadeba, J.-C., Niamba, P., Barro, F., & Ouedraogo, L. (2005). Use of cutaneous depigmenting  
854 products by women in two towns in Burkina Faso: Epidemiologic data, motivations, products and  
855 side effects. *Int. J. Dermatol.*, 44(Suppl. 1), 30–32. PMID: 16187955,  
856 <https://doi.org/10.1111/j.1365-4632.2005.02807.x>.
- 857 U.S. FDA. (2020). *FDA's Testing of Cosmetics for Arsenic, Cadmium, Chromium, Cobalt, Lead,*  
858 *Mercury, and Nickel Content*. U.S. Food and Drug Administration (U.S. FDA).  
859 [https://www.fda.gov/cosmetics/potential-contaminants-cosmetics/fdas-testing-cosmetics-arsenic-](https://www.fda.gov/cosmetics/potential-contaminants-cosmetics/fdas-testing-cosmetics-arsenic-cadmium-chromium-cobalt-lead-mercury-and-nickel-content)  
860 [cadmium-chromium-cobalt-lead-mercury-and-nickel-content](https://www.fda.gov/cosmetics/potential-contaminants-cosmetics/fdas-testing-cosmetics-arsenic-cadmium-chromium-cobalt-lead-mercury-and-nickel-content) [accessed 10 February 2021].
- 861 UNEP/WHO. (2008). *Guidance for Identifying for Populations at Risk from Mercury Exposure*.  
862 <http://www.who.int/foodsafety/publications/chem/mercuryexposure.pdf> [accessed 30 June 2021].
- 863 UNEP. (2019). *Minamata Convention Text and Annexes*.  
864 <https://www.mercuryconvention.org/en/resources/minamata-convention-mercury-text-and-annexes>  
865 [accessed 30 June 2021].
- 866 Uram, E., Bischofer, B. P., & Hagermann, S. (2010). Market analysis of some mercury containing  
867 products and their mercury-free alternatives in selected regions. In *Gesellschaft für Anlagenund*

- 868 *Reaktorsicherheit, Brunswick, Germany* (Issue March 2015).
- 869 Voegborlo, R., Voegborlo, S., Buabeng-Acheampong, B., & Zogli, E. (2008). Total mercury content of  
870 skin toning creams and the potential risk to the health of women in Ghana. *J. Sci. Technol. (Ghana)*,  
871 28(1), 88–96. <https://doi.org/10.4314/just.v28i1.33081>.
- 872 Wang, L., & Zhang, H. (2015). Mercury content in marketed cosmetics: analytical survey in  
873 Shijiazhuang, China. *Cutan. Ocul. Toxicol*, 34(4), 322–326. PMID: 25594253,  
874 <https://doi.org/10.3109/15569527.2014.994123>.
- 875 Weldon, M. M., Smolinski, M. S., Maroufi, A., Hasty, B. W., Gilliss, D. L., Boulanger, L. L., Balluz, L.  
876 S., & Dutton, R. J. (2000). Mercury poisoning associated with a Mexican beauty cream. *West. J.*  
877 *Med.*, 173(1), 15–18. PMID: 10903281, <https://doi.org/10.1136/ewjm.173.1.15>.
- 878 WHO. (2019). Preventing disease through healthy environments: mercury in skin lightening products.  
879 *World Health Organization (WHO)*. [http://www.who.int/ipcs/assessment/public\\_health/](http://www.who.int/ipcs/assessment/public_health/mercury_flyer.pdf)  
880 [mercury\\_flyer.pdf](http://www.who.int/ipcs/assessment/public_health/mercury_flyer.pdf) 5. [accessed 30 June 2021].
- 881 Yang, H.-H., Chen, P.-Y., Ho, P.-H., & Shih, Y. (2014). Direct Analysis of Mercury in Cosmetics Using  
882 Screen-Printed Silver Electrodes and Flow Injection Analysis. *J. Electrochem. Soc.*, 161(6), B137–  
883 B142. <https://doi.org/10.1149/2.057406jes>.
- 884 Zainy, F. M. (2015). Determination of Heavy Metals in 16 Bleaching Creams and 3 Mixtures of  
885 Bleaching Creams from Local Market of Jeddah. *Egypt. J. Chem.*, 58(3), 377–386.  
886 <https://doi.org/10.21608/EJCHEM.2015.1020>.
- 887
- 888
- 889

890 **Table 1.** Overview of studies included in this review.

<b>Data group</b>	<b>No. of studies</b>	<b>Study analysis type</b>	<b>Summary</b>
“Mercury in products”	25	Quantitative	Studies analyzing mercury concentrations in skin-lightening cosmetic samples were collected from 16 countries/territories with sample sizes ranging from 2 and 191 per study
“Usage of products”	16	Semi-quantitative	Studies were collected from nine countries to describe skin-lightening usage patterns (e.g., frequency, duration, application, quantity) amongst users
“Human biomarkers of exposure”	9	Quantitative	Studies were collected from six countries/territories analyzing mercury concentrations in blood, urine, and hair with sample sizes ranging between 11 and 465 samples per study
“Health impacts”	5	Semi-quantitative	Studies were collected from four countries/territories observing associated health effects from mercury-added skin-lightening products

891

892

893 **Table 2.** Count of studies and their distribution across WHO regions, along with the total number of items  
894 (for “Hg in products” and “Human biomarkers of exposure” groups) or individuals (for “Usage of  
895 products” and “Health impacts” groups) included in this review.  
896

<b>Data Group</b>	<b>No. of studies</b>	<b>No. of Items or Individuals</b>	<b>Africa</b>	<b>Americas</b>	<b>Eastern Mediterranean</b>	<b>Europe</b>	<b>South-East Asia</b>	<b>Western Pacific</b>
1) “Mercury in products”	25	787	5	5	7	1	1	6
2) “Usage of products”	16	3,898	5	3	3	0	1	1
3) “Human biomarkers of exposure”	9	1,042	1	3	1	0	1	3
4) “Health impacts”	5	832	0	3	0	0	0	2

897

898

899

900 **Table 3.** Study quality scores for nine items that assess risk of bias within studies of the 1) “Mercury in  
 901 products” and 3) “Human biomarkers of exposure” data groups. Each of the nine items were given a score  
 902 of either 0, 1, or 2, and summed for an overall study quality score [0 to 5 (low quality/high risk of bias), 6  
 903 to 12 (moderate quality/risk of bias), and 13 to 18 (high quality/low risk of bias)]. The nine items in the  
 904 top row correspond to 1) measurement instrument reported, 2) accuracy through use of reference material,  
 905 3) precision through use of replicate measures, 4) LOD reported and acceptable, 5) selection method  
 906 (convenience/random), 6) sample size, 7) demographics reported, 8) Hg exposure characteristics reported;  
 907 and 9) paper had key descriptive measures reported. \*Short communication study, and methods for  
 908 testing products were not clearly stated.

Data Group	Reference	1	2	3	4	5	6	7	8	9	Total Score	Overall
Human Biomarkers	(Sin & Tsang, 2003)	0	0	0	0	1	2	2	2	2	9	Moderate
	(Weldon et al., 2000)	0	0	0	0	1	2	2	2	2	9	Moderate
	(Fakour & Esmaili-Sari, 2014)	2	2	2	0	2	0	2	0	1	11	Moderate
	(McKelvey et al., 2011)	2	2	2	2	1	0	2	0	1	12	Moderate
	*(Harada et al., 2001)	0	2	2	0	1	0	2	2	1	10	Moderate
	(McRill et al., 2000)	0	0	0	0	1	1	2	0	2	6	Moderate
	(Abbas et al., 2020)	2	0	0	1	0	1	2	2	2	10	Moderate
	(Kanwal et al., 2019)	2	2	0	2	0	0	1	0	2	9	Moderate
	(Kinabo, 2005)	2	0	0	2	0	0	2	2	2	10	Moderate
Mercury in products	(Agorku et al., 2016)	2	2	2	2	1	2	0	0	1	12	Moderate
	(Murphy et al., 2009)	2	2	2	1	1	1	0	0	1	10	Moderate
	(Ho et al., 2017)	2	2	2	2	1	1	0	0	2	12	Moderate
	*(Harada et al., 2001)	0	0	0	0	0	0	2	1	1	4	Low
	(Zainy, 2015)	2	2	2	1	0	1	0	0	1	9	Moderate
	(Peregrino et al., 2011)	2	2	2	2	0	2	0	0	1	11	Moderate
	(Gbetoh & Amyot, 2016)	2	2	2	2	1	2	0	0	2	13	Good
	(Al-Saleh et al., 2012)	2	2	2	2	0	2	0	0	2	12	Moderate
	(Yang et al., 2014)	2	2	2	2	0	0	0	0	1	9	Moderate
	(Salama, 2016)	2	2	2	1	0	0	0	0	0	7	Moderate
	(Wang & Zhang, 2015)	2	2	2	2	0	1	0	0	0	9	Moderate
	(McKelvey et al., 2011)	0	0	0	0	1	1	2	0	2	6	Moderate
	(Ashraf et al., 2020)	2	2	2	1	0	1	0	0	1	9	Moderate
	(Selvaraju et al., 2020)	2	2	2	2	1	1	0	0	2	12	Moderate
	(Abbas et al., 2020)	2	0	0	1	0	1	2	2	2	10	Moderate
	(Kanwal et al., 2019)	2	2	0	2	0	0	0	0	2	8	Moderate
	(Kinabo, 2005)	2	0	0	2	0	2	2	2	2	12	Moderate
	(Voegborlo et al., 2008)	2	2	2	1	1	2	0	0	2	12	Moderate
	(Maneli et al., 2016)	2	2	2	1	0	1	0	0	2	10	Moderate
	(Alqadami et al., 2017)	2	2	2	2	0	1	0	0	2	11	Moderate
	(Alqadami et al., 2013)	2	2	2	2	0	2	0	0	2	12	Moderate
	(Ababneh & Al-Momani, 2018)	2	2	2	2	1	2	0	0	1	12	Moderate
	(Mohammed et al., 2017)	2	2	2	2	0	1	0	0	1	10	Moderate
	(Amponsah et al., 2014)	2	2	2	1	1	2	0	0	2	12	Moderate
	(Cristaudo et al., 2013)	2	1	2	2	0	1	2	2	2	14	Good

909

910

911

912 **Table 4. Summary of mercury concentrations from the “Human Biomarkers of Exposure” data**  
 913 **group.** The upper reference values were: urine (20 µg/L), blood (10 µg/L), hair (1 µg/g).

914 <sup>a</sup> Includes nine known product users, and four individuals suspected of using products. <sup>b</sup> Control group  
 915 includes concentrations from both users and non-users. \*Mean values used since median values were not  
 916 available.  
 917

Reference	Country/ Territory	Type of Biomarker	User type	Sample size (n)	Age range (median)	Total mercury concentration range (median)	No. of individuals above reference value	No. of individuals below reference value
McRill, 2000	USA	Urine	User	71	14- 72 (33.3)*	21-770 µg/L	57	14
		Urine	Family members	18	--	29-340 µg/L	9	9
Weldon, 2000	USA	Urine	User	203	14- 79 (32)	0-170 (79) µg/L	159	44
McKelvey, 2011	USA	Urine	User <sup>a</sup>	13	21-51	20-95 µg/L	13	0
Sin and Tsang, 2003	Hong Kong	Urine	User	282	15-76 (35)	0-720 (23) µg/L	154	128
		Blood	User	183	15-76 (35)	0-82 (13) µg/L	119	64
Kanwal, 2019	Japan	Hair	User	11	19-55	11.1-107 (38.4) µg/g	11	0
Abbas, 2020	Indonesia	Hair	User	105	19-25 (21)	0.5-475.9 (5.9) µg/g	95	10
			Non-user	43		0-4.7 (2.4) µg/g	40	3
Kinabo, 2005	Tanzania	Hair	User	20	13-33 (29)	55.8-880 (350) µg/g	20	0
			Non-user	20	15-33 (21)	0.6-8.3 (1.8) µg/g	16	4
Harada, 2001	Japan	Hair	User	11	20-39 (28)	1.1-900 (63.7) µg/g	11	0
Fakour, 2014	Iran	Hair	User	36	22-43 (27.3*)	0.4-3.2 (1.25*) µg/g	--	--
			Non-users	26		0.2-6.3 (1.15*) µg/g	--	--

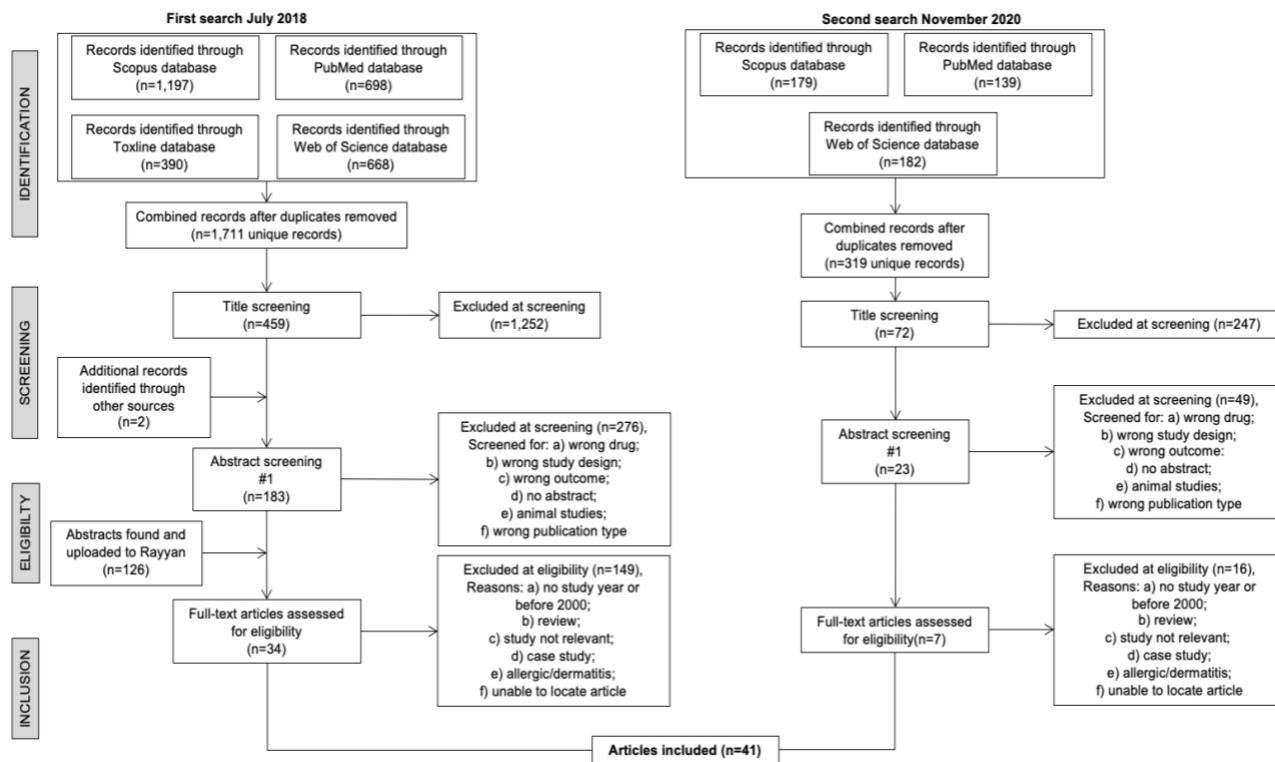
918

919



920

921



922

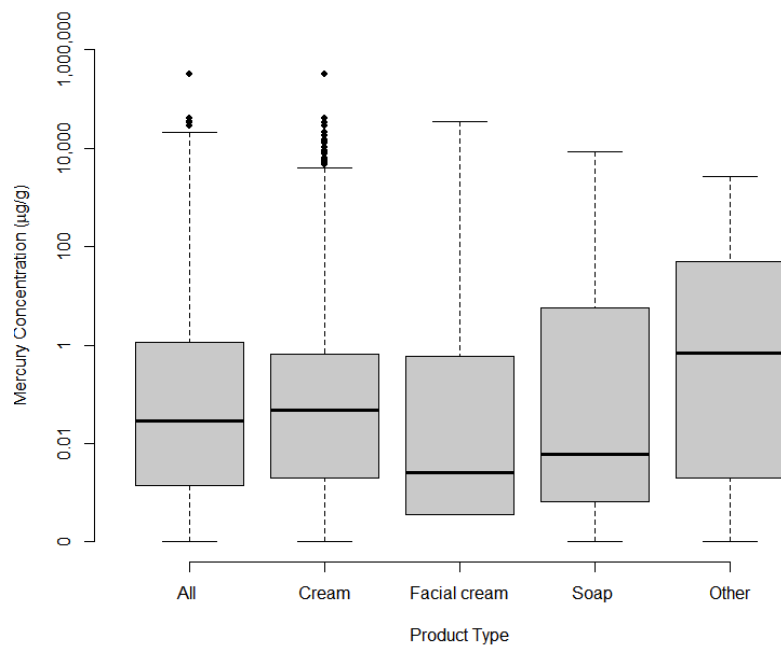
923 **Figure 1.** PRISMA flow diagram detailing how articles were identified, reviewed, and deemed eligible

924 for inclusion in the current study.

925

926

927



928

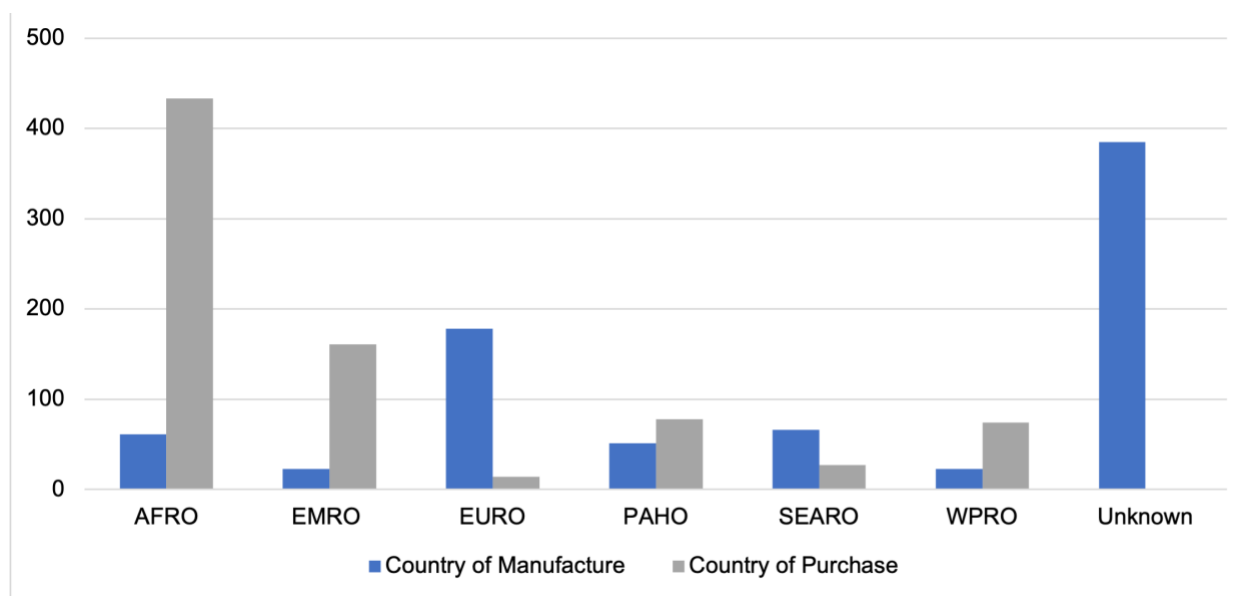
929 **Figure 2.** Boxplots showing mercury concentrations ( $\mu\text{g Hg/g}$ ) found in all 738 skin-lightening products  
930 (as well as in creams, facial creams, soaps, and other categorized items).

931

932

933

934



935

936

937

938

939

940

**Figure 3.** Bar plots showing quantity and types of 787 skin-lightening products manufactured and purchased according to the WHO regions.

941

942

943 (A)

944

945

946

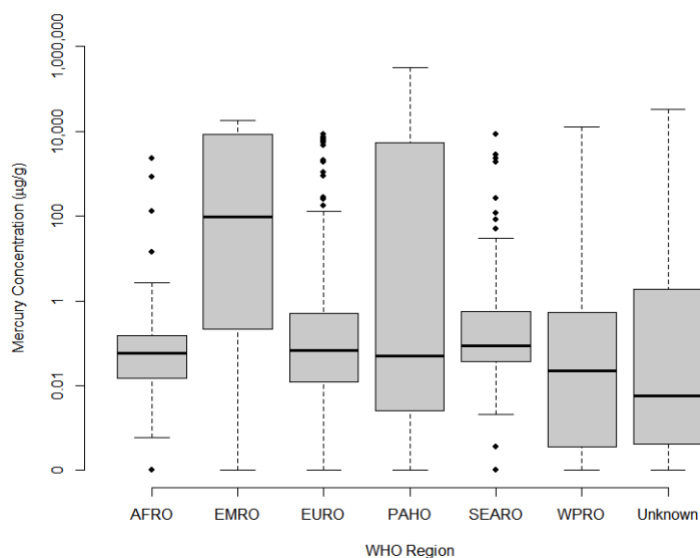
947

948

949

950

951



952

953 (B)

954

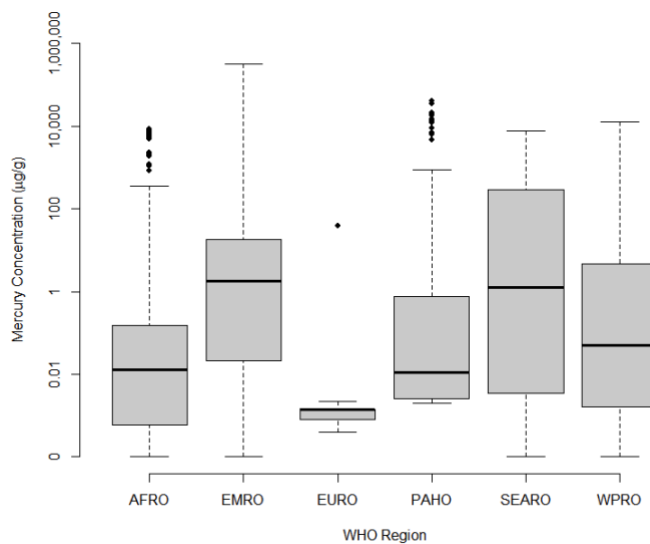
955

956

957

958

959



960

961

962

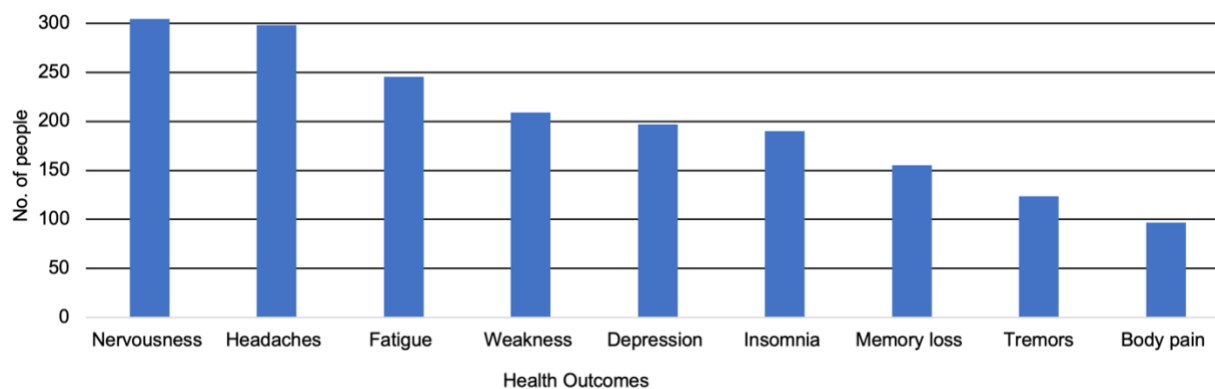
963 **Figure 4.** Boxplots showing mercury concentrations (µg Hg/g) in 738 skin-lightening products (creams,  
964 facial creams, soaps, other) across six WHO regions where products were (A) manufactured and (B)  
965 purchased.

966

967

968

969



970

971 **Figure 5.** Count plot of self-reported health outcomes from 684 individuals from USA and Hong Kong  
972 measuring biomarker samples to determine presence of mercury poisoning and other associated health  
973 impacts from a targeted skin-lightening product (McRill et al., 2000; Sin & Tsang, 2003; Weldon et al.,  
974 2000).