

1 **Glasses Against transmission of SARS-CoV-2 in the community**
2 **(GLASSY): a pragmatic randomized trial**

3
4

5 Atle Fretheim^{1,2*}, Ingeborg Hess Elgersma¹, Arnfinn Helleve³, Petter Elstrøm^{1,4}, Oliver Kacelnik^{1,4} Lars
6 G. Hemkens^{5,6,7}

7

8 ¹Centre for Epidemic Interventions Research (CEIR), Norwegian Institute of Public Health, Oslo,
9 Norway

10 ²Faculty of Health Sciences, Oslo Metropolitan University, Oslo, Norway

11 ³Centre for Evaluation of Public Health Measures, Norwegian Institute of Public Health, Oslo, Norway

12 ⁴Division for Infection Control, Norwegian Institute of Public Health, Oslo, Norway

13 ⁵Department of Clinical Research, University Hospital Basel, University of Basel, Basel, Switzerland

14 ⁶Meta-Research Innovation Center at Stanford (METRICS), Stanford University, Stanford, USA

15 ⁷Meta-Research Innovation Center Berlin (METRIC-B), Berlin Institute of Health, Berlin, Germany.

16

17 *Corresponding author.

18 E-Mail: atle.fretheim@fhi.no

19

20

21 **Abstract**

22 **Background** Observational studies have reported an association between use of eye protection and
23 reduced risk of SARS-CoV-2 infection and other respiratory viruses, but as for most non-
24 pharmaceutical interventions for infection control, no randomized trials have been conducted.

25 We conducted a randomized trial to evaluate the effectiveness of recommending the use of glasses in
26 public as protection against being infected with SARS-CoV-2 and other respiratory viruses.

27 **Methods and findings** This was a pragmatic, randomized, trial in Norway from 2 February to 24 April
28 2022 where all adult members of the public who did not regularly wear glasses, had no symptoms of
29 COVID-19 and no COVID-19 in the last 6 weeks, were eligible. Participants randomized to the
30 intervention group were asked to wear glasses (e.g. sunglasses) for 2 weeks when close to others in
31 public spaces. The primary outcome was positive COVID-19 test result notified to the Norwegian
32 Surveillance System for Communicable Diseases (MSIS). Secondary outcomes included positive
33 COVID-19 test result based on self-report and episode of respiratory infection based on self-report of
34 symptoms. We randomized 3717 participants. All were identified and followed up in the registries and
35 87% responded to the end of study-questionnaire. The proportions with a notified positive COVID-19
36 test in the national registry were 3.7% in the intervention group (68/1852) and 3.5% (65/1865) in the
37 control group (95% CI for risk difference -1.0% to 1.4%; relative risk 1.10, 95% CI 0.75 to 1.50). The
38 proportions with a positive COVID-19 test based on self-report were 9.6% and 11.5% (95% CI for risk
39 difference -3.9% to 0.1%; relative risk 0.83, 95% CI 0.69 to 1.00). The risk of respiratory infections
40 based on self-reported symptoms was lower in the intervention group (31% vs. 34%; 95% CI for risk
41 difference -3.3% to -0.3%; relative risk 0.90, 95% CI 0.82 to 0.99).

42 **Conclusions:** Our results indicate that asking people to wear glasses may protect the public against
43 respiratory infections, but the findings are not certain, and the study needs replication. Although the
44 evidence is uncertain, and the effect probably modest at best, wearing glasses may be worth
45 considering as one component in the infection control toolbox since it is a simple, low burden, and
46 low-cost intervention, with few negative consequences.

47
48 **Trial registration:** ClinicalTrials.gov Identifier: [NCT05217797](https://clinicaltrials.gov/ct2/show/study/NCT05217797)

49

50 **Funding:** The costs of running the trial were covered by the Centre for Epidemic Interventions
51 Research (CEIR), Norwegian Institute of Public Health. The authors received no specific funding for
52 this work

53

54 **Keywords**

55 COVID-19; non-pharmaceutical intervention; prevention; glasses; eye protection; personal protective
56 equipment; pragmatic trial; randomized trial

57

58 **Introduction**

59 Use of eye protective gear for infection control was proposed over 100 years ago [1], but has received
60 little attention during the ongoing COVID-19 pandemic, except as part of Personal Protective
61 Equipment (PPE) for health care workers [2].

62

63 A simple means of eye protection is to wear glasses. Many have easy access to sunglasses, and it
64 requires little effort to use them in everyday life. Repurposing sunglasses for infection control could be
65 a simple, readily available, environmentally friendly, safe, and sustainable infection prevention
66 measure. An association between wearing glasses and lower risk of respiratory viruses has been
67 reported from observational studies, but to our knowledge no randomized trial of eye protection
68 against respiratory virus infection has been conducted, neither in health care nor in community
69 settings [3-6].

70

71 To inform decisions about the use of personal protection against SARS-CoV-2, we carried out a
72 randomized trial of wearing glasses to reduce the risk of being infected with SARS-CoV-2 and other
73 respiratory viruses.

74 **Methods**

75 The study protocol was published prior to the start of the study [7]. There were no major deviations
76 from the protocol. We followed the CONSORT reporting guidelines for pragmatic trials [8].

77

78 **Participants**

79 We recruited participants via an online portal that we distributed to the Norwegian public through the
80 media, online and print adverts and e-mails to members of survey panels of two data collection
81 companies. All members of the public could take part who

- 82 1. were at least 18 years of age
- 83 2. did not regularly wear glasses
- 84 3. owned or could borrow glasses that they could use (e.g. sun-glasses)

- 85 4. had not contracted COVID-19 in the six weeks prior to participation
- 86 5. did not have COVID-19 symptoms when providing consent
- 87 6. were willing to be randomized to wear, or not wear glasses outside their home when close to
- 88 others for a 2-week period.
- 89 7. provided informed consent

90 Those dependent on visual aids who could use contact lenses if allocated to the control group, were
91 eligible.

92 **Intervention**

93 The participants allocated to the intervention group were asked to wear sunglasses or other types of
94 glasses when close to other people outside their home (on public transport, in shopping malls etc.),
95 over a 14-day period. The control group was encouraged not to wear glasses when close to others
96 outside their home.

97

98 **Objective**

99 We aimed to evaluate whether wearing glasses has an impact on the risk of being infected by the
100 SARS-CoV-2 virus or developing a respiratory infection.

101

102 **Outcomes**

103 All data were collected from national registries or the end of study survey. In general, data from
104 administrative registries in Norway are reliable and of high quality and are used extensively in
105 research [9]. All participants had to identify themselves using their personal ID-code, and were
106 thereby identifiable in the national health registries. All PCR COVID-19 tests are analyzed by
107 laboratories that report results directly to the Norwegian Surveillance System for Communicable
108 Diseases (MSIS), so we can reasonably assume that all such tests are registered.

109

110 Primary outcome:

- 111 - Any positive COVID-19 test result notified to the Norwegian Surveillance System for
112 Communicable Diseases (MSIS), from day 3 to day 17 of the study period.

113

114 Secondary outcomes:

- 115 - Any positive COVID-19 test result based on self-report, from day 1 to day 17 of the study
116 period.
- 117 - Episode of respiratory infection based on self-report of symptoms from day 1 to day 17 of the
118 study period. We defined respiratory infection as having one respiratory symptom (stuffed or
119 runny nose, sore throat, cough, sneezing, heavy breathing) and fever, or one respiratory
120 symptom and at least two more symptoms (body ache, muscular pain, fatigue, reduced
121 appetite, stomach pain, headache, loss of smell,)
- 122 - Health care use for respiratory symptoms, self-reported, from day 1 to day 17 of the study
123 period
- 124 - Health care use for injuries, self-reported, from day 1 to day 17 of the study period
- 125 - Health care use (all causes), self-reported, from day 1 to day 17 of the study period
- 126 - Health care use for respiratory symptoms as registered in Norwegian Patient Registry (NPR),
127 from day 3 to day 28 of the study period
- 128 - Health care use for injuries (from day 1 to day 21 as registered in NPR and the Norwegian
129 Registry for Primary Health Care (KPR), from day 3 to day 28 of the study period
- 130 - Health care use (all causes) as registered in NPR and KPR from day 1 to day 21 of the study
131 period

132

133 We do not report on the latter four outcomes here as we do not have access to this data for the time
134 being.

135

136 We also asked the participants about adherence to the intervention, use of face masks, testing
137 behavior, and whether they had any negative experiences with taking part in the study. See
138 supporting information (S1) for questionnaire.

139

140 **Sample size**

141 We originally estimated a need for around 22 000 participants. This was based on an expected event
142 rate of 2% in the control group and 1.5% in the intervention group. The underlying assumptions are
143 provided in the study protocol [7].

144

145 **Randomization and masking**

146 The participants were automatically randomized and informed about which group they were allocated
147 to immediately after signing the consent form in the online recruitment platform (Nettskjema). No
148 masking was feasible, except for in the analysis phase. One member of our team (AH) provided the
149 chief analyst (IHE) with a data file where group allocation was blinded. The chief analyst presented
150 the main results to the project team who were also blinded to the group allocation (and data on use of
151 glasses). We discussed how we would interpret the findings depending on whether one group or the
152 other was the intervention group, and we prepared a short report that we posted online before
153 unblinding ourselves to the group allocation [10].

154

155 **Statistical methods**

156 We conducted unadjusted analyses to estimate the relative risk and risk difference for the
157 prespecified outcomes, with 95% confidence intervals calculated with the Wald method. All analyses
158 adhered to the intention to treat principle and we included all randomized participants in the
159 denominator in all our main analyses. Where outcome data was missing, we assumed that there was
160 no event (no positive COVID-19 test, no symptoms, no use of health care services etc.). As a post
161 hoc sensitivity analysis, we also conducted a crude (unadjusted) per protocol analysis where we
162 excluded participants using glasses in the control group and participants not using glasses in the
163 intervention group.

164

165 As planned, we conducted a subgroup analysis for participants that used contact lenses, with the
166 hypothesis that the effect would be smaller for this group since control group participants were
167 allowed to use contact lenses. One possible mechanism for viral transmission is that the viruses
168 attach to ACE-2 receptors in the cornea, which we assume are protected by contact lenses [5]. We
169 also conducted subgroup analyses for groups with different vaccination status and for those with a
170 history of COVID-19. Differences in treatment effects across subgroups were assessed using a chi-
171 square test of interaction.

172

173 The trial is registered at ClinicalTrials.gov (NCT05217797).

174

175 **Data management**

176 We used the University of Oslo's web-based survey platform Nettskjema for screening and data
177 collection, and their service for secure storage of research data (TSD).

178

179 We collected directly identifiable data (name, person identification number and e-mail address). Along
180 with a code for linking data, the person identification number was sent to the registries. Each register
181 deleted the person identification number before register-data and code for linking were delivered and
182 stored in TSD. The questionnaire data were processed in the same way. The codes for linking data to
183 the person identifier was kept in a securely stored database, with limited access.

184

185 **Ethics**

186 Information about the goal of the trial and eligibility study were provided through an online portal, and
187 eligible participants consented to participation using the national digital signature service (Posten
188 signering). In our judgement, taking part entailed negligible risk and the findings can potentially inform
189 decisions about infection control measures in the ongoing and future epidemics. Thus, we considered
190 the risk-benefit ratio morally defensible.

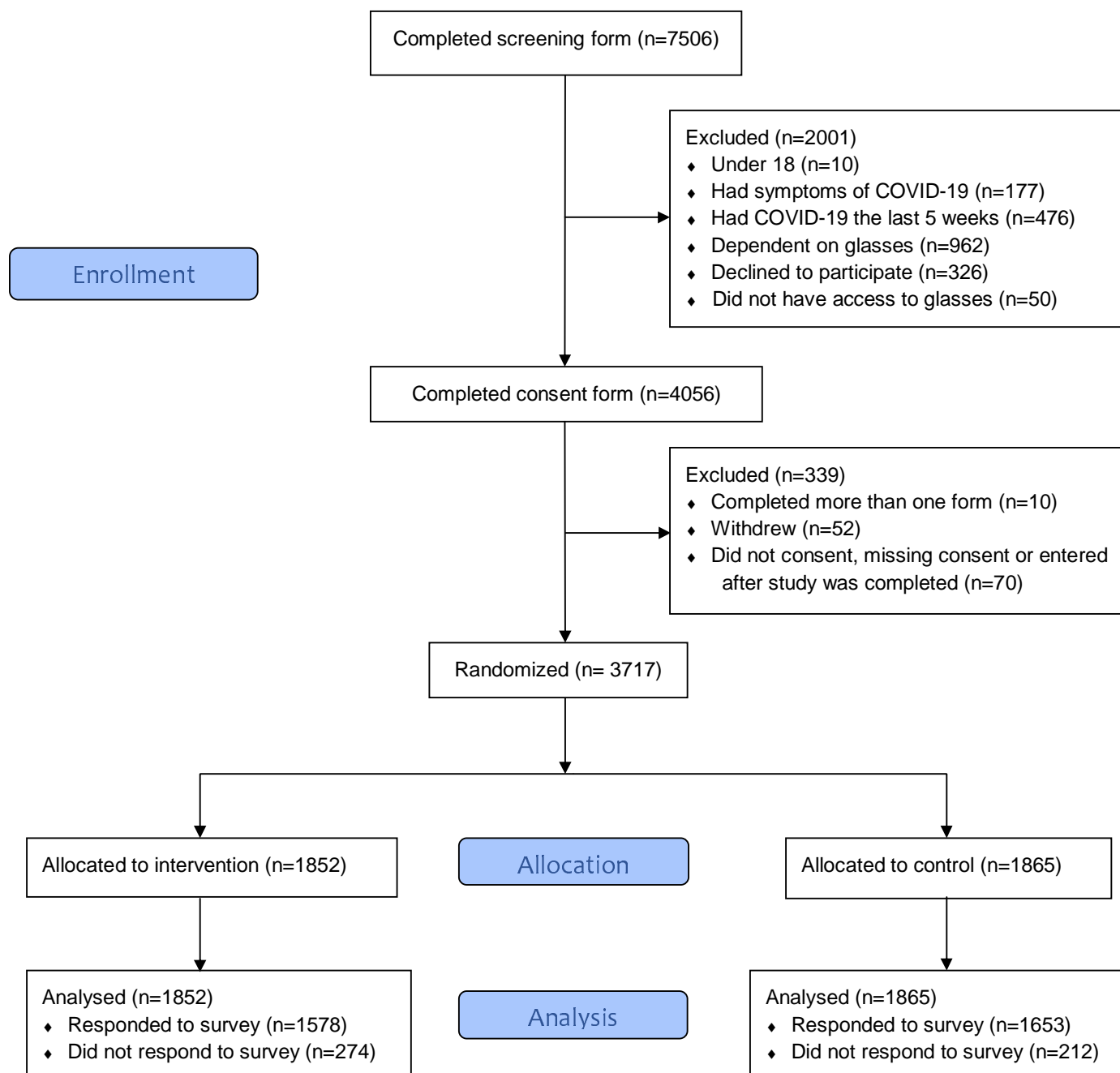
191

192 The protocol was approved by the Regional Ethics Committee of South-East Norway (application
193 number 428685).

194 **Results**

195 Recruitment commenced on 2 February 2022. Of the 7506 individuals who showed interest in
196 participating in the trial by completing the screening form, 3717 were randomized (Figure 1). Most
197 participants entered the trial soon after initiation, following wide media coverage of the launch of the
198 trial on Norwegian national television and other media outlets (Figure 2). Another wave of recruitment
199 occurred after two data collection companies invited members of their survey panels to take part in

200 the trial. We closed recruitment 24 April 2022. Most participants were female, had a mean age of 47
201 years, and had received three or more doses of vaccination against COVID-19 (Table 1).
202



203 **Fig 1. Flow diagram of participants**

204

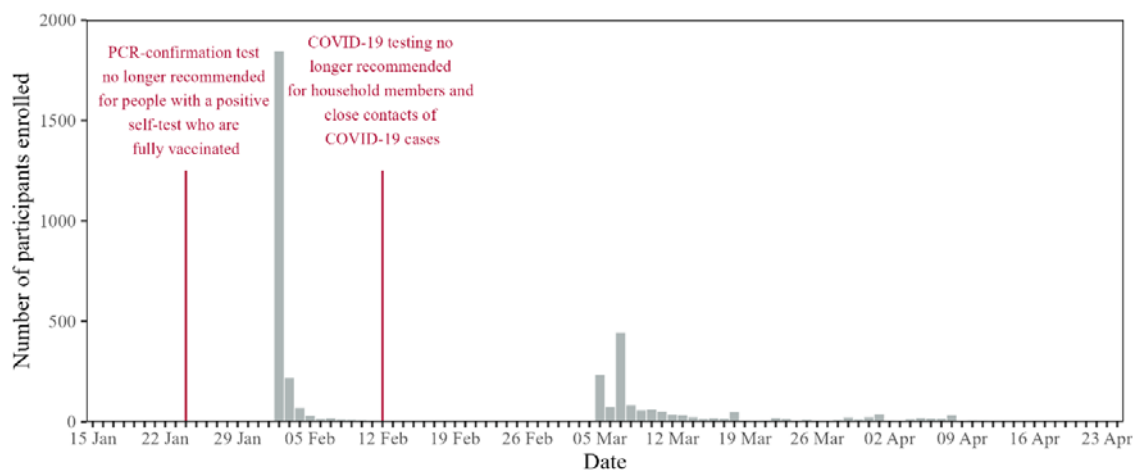


Fig 2. Recruitment over time. Grey bars represent the number of participants enrolled each day. Red vertical lines represent major changes in testing recommendations from national health authorities.

205

206

207 **Table 1. Baseline characteristics of trial participants**

208

	Intervention group (n=1852)	Control group (n=1865)
Female	1193 (64.4%)	1246 (66.8%)
Male	659 (35.6%)	619 (33.2%)
Mean age at inclusion (sd)	46.9 (15.1)	46.8 (15.1)
Number of COVID-19 vaccines received		
0	50 (2.7%)	58 (3.1%)
1	19 (1.0%)	21 (1.1%)
2	361 (19.5%)	335 (18.0%)
3 or more	1422 (76.8%)	1451 (77.8%)

209

210 The main findings are summarized in Table 2. For notified COVID-19 cases the proportions were
 211 68/1852 (3.7%) in the intervention group, and 65/1865 (3.5%) in the control group (RR 1.10; 95% CI
 212 0.76 to 1.50). The proportion with self-reported positive tests was lower in the intervention group,
 213 177/1852 (9.6%) vs. 214/1865 (11.3%) (RR 0.83; 95% CI 0.69 to 1.00). Almost a third of all
 214 participants reported symptoms of respiratory infection, with a lower proportion in the intervention
 215 group than in the control group (RR 0.90; 95% CI 0.82 to 0.99). There were few notified COVID-19
 216 cases among the non-respondents to the survey (8 in the intervention group and 3 in the control
 217 group).

218 **Table 2. Main findings**

	Intervention group (n=1852)	Control group (n=1865)	Relative risk	Absolute risk difference
Notified COVID-19 case ¹	68/1852 (3.7%)	65/1865 (3.5%)	1.10 (0.75 to 1.50)	0.2% (-1.0 to 1.4)
Self-reported COVID-19 case ²	177/1852 (9.6%)	214/1865 (11.5%)	0.83 (0.69 to 1.00)	-1.9% (-3.9 to 0.1)
Respiratory infection ³	571/1852 (30.8%)	636/1865 (34.1%)	0.90 (0.82 to 0.99)	-3.3% (-6.3 to -0.3)
Health care use, all cause	80/1852 (4.3%)	83/1865 (4.5%)	0.97 (0.72 to 1.30)	-0.1% (-1.4 to 1.2)
- Health care use, due to airway symptoms ³	15/1852 (0.8%)	20/1865 (1.1%)	0.76 (0.39 to 1.50)	-0.3% (-0.9 to 0.4)
- Health care use, due to injuries ³	24/1852 (1.3%)	16/1865 (0.9%)	1.50 (0.81 to 2.80)	0.4% (-0.2 to 1.1)

219 ¹ Date of test between day 3 and day 17 after inclusion in the study

220 ² Date of test Between day 1 and day 17 after inclusion in the study

221 ³Self-reported

222

223 We report behavioral outcomes in Table 3. In the intervention group, 71% of the participants reported
 224 using glasses often, almost always, or always, while the corresponding proportion in the control group
 225 was 11% (95% CI for difference 58 to 63%). The use of face masks was higher in the intervention-
 226 group (40% vs. 30%, 95% CI for difference 7 to 13%). The proportion of participants who took a
 227 COVID-test during the trial period was similar in the two groups (50% vs. 49%). We also asked the
 228 participants whether they normally commuted to work/studies by public transportation, and the
 229 proportion reporting that they did was lower in the intervention group (23% vs. 27%; 95% CI for
 230 difference -7 to -1%).

231

232 **Table 3. Behavioral outcomes**

	Intervention group (n=1852)	Control group (n=1865)	Risk difference (95% CIs)
Responded to survey	1578/1852 (85.2%)	1653/1865 (88.6%)	-3.4% (-5.6 to -1.3)
Use of glasses			
At least 50% of the time	1306/1852 (70.5%)	196/1865 (10.5%)	60.0% (57.5 to 62.5)
- Always	575/1852 (31.0%)	60/1865 (3.2%)	27.8% (25.6 to 30.1)
- Almost always (75 to 100% of the time)	524/1852 (28.3%)	81/1865 (4.3%)	24.0% (21.7 to 26.2)
- Often (50 to 75% of the time)	207/1852 (11.2%)	55/1865 (2.9%)	8.2% (6.6 to 9.9)
- Sometimes (25 to 50% of the time)	91/1852 (4.9%)	59/1865 (3.2%)	1.8% (0.5 to 3.0)

- Almost never (up to 25% of the time)	101/1852 (5.5%)	339/1865 (18.2%)	-12.7% (-14.8 to -10.7)
- Never	78/1852 (4.2%)	1054/1865 (56.5%)	-52.3% (-54.7 to -49.9)
Use of facemasks			
At least 50% of the time	731/1852 (39.5%)	554/1865 (29.7%)	9.8% (6.7 to 12.8)
- Always	180/1852 (9.7%)	134/1865 (7.2%)	2.5% (0.7 to 4.3)
- Almost always (75 to 100% of the time)	319/1852 (17.2%)	225/1865 (12.1%)	5.2% (2.9 to 7.4)
- Often (50 to 75% of the time)	232/1852 (12.5%)	195/1865 (10.5%)	2.1% (0.0 to 4.1)
- Sometimes (25 to 50% of the time)	210/1852 (11.3%)	227/1865 (12.2%)	-0.8% (-2.9 to 1.2)
- Almost never (up to 25% of the time)	250/1852 (13.5%)	345/1865 (18.5%)	-5.0% (-7.4 to -2.6)
- Never	381/1852 (20.6%)	524/1865 (28.1%)	-7.5% (-10.3 to -4.8)
Use of COVID-19 tests			
Tested	925/1852 (49.9%)	914/1865 (49.0%)	0.9% (-2.3 to 4.2)
- Home test and test station	120/1852 (6.5%)	103/1865 (5.5%)	1.0% (-0.6 to 2.5)
- Only test station	10/1852 (0.5%)	13/1865 (0.7%)	-0.2% (-0.7 to 0.3)
- Only home test	795/1852 (42.9%)	798/1865 (42.8%)	0.1% (-3.0 to 3.3)
- No	651/1852 (35.2%)	739/1865 (39.6%)	-4.5% (-7.6 to -1.4)

233

234 The results of the per protocol analysis, i.e. where we excluded non-adherent participants in both
235 groups, are presented in Table S1. There were practically no differences between these estimates
236 and those of the main analysis. Subgroup analyses did not suggest any interaction effects, except
237 between vaccination status and relative risk of notified COVID-19 (Tables S2 and S3).

238

239 In total 76 participants reported having negative experiences with taking part in the trial (53 in the
240 intervention group and 23 in the control group), and all but one elaborated using free text. The most
241 common complaint concerned the combination of glasses and face masks, especially fogging (21 in
242 the intervention group mentioned this). Wearing glasses felt uncomfortable or tiring by some, and a
243 few complained over reduced vision due to using sunglasses or reading glasses. One person in the
244 intervention group reported a fall due to reduced vision. A few felt silly when wearing glasses or
245 sunglasses, e.g. inside a cafe. In the control group there were some who reported headaches or other
246 problems from not being able to use glasses.

247

248 **Discussion**

249 The findings from this first randomized trial of eye protection against viral spread indicate that using
250 glasses in public may protect against respiratory viruses, but the evidence is uncertain, and more
251 trials are needed to corroborate this evidence.

252

253 **Comparison with other studies**

254 A recent systematic review of studies estimating the impact of eye protection on transmission of
255 SARS-CoV-2 identified 5 observational studies, all conducted among health workers in various
256 settings [5]. With one exception, all studies reported a clear association between use of eye protection
257 and reduced infection risk, with estimated relative risk reductions ranging from 40% to 96%. The
258 systematic review authors also identified three cross sectional studies examining the use of glasses in
259 the community, all of which found a substantial underrepresentation of people wearing glasses among
260 COVID-19 patients [11-13]. In addition, some studies have shown high detection rates of SARS-CoV-
261 2 in ocular fluids from COVID-19 patients, also indicating that the eyes may be an important route of

262 viral transmission [14, 15]. An earlier systematic review, from 2020, of studies from previous
263 coronavirus-outbreaks (MERS and SARS), included 12 studies in a meta-analysis indicating that use
264 of eye protection was associated with considerable reduced infection risk (relative risk 0.34; 95% CI
265 0.21 to 0.56) [4]. None of the studies were randomized, and nearly all were conducted in health care
266 settings. Furthermore, a Cochrane-review from 2020 identified no randomized trials of eye protection
267 to curb the spread of respiratory viruses [3]. While we were conducting our trial, a pre-print with
268 findings from a cohort study in the UK was published, reporting 15% lower odds of COVID-19 among
269 consistent users of glasses (OR 0.85, 95% 0.77 to 0.94), after adjusting for key variables e.g. age
270 [16]. Overall, all these prior findings are compatible with the results of this first large randomized trial.

271

272 Our trial is one of very few randomized trials evaluating public health and social measures for
273 epidemic control [3, 4, 6]. For example, only two trials of face masks have been conducted during the
274 COVID-19 pandemic [17, 18]. The results from the two face mask trials are, broadly speaking, in the
275 same range as ours, i.e. consistent with a modest albeit uncertain effect.

276

277 **Strengths and limitations of study**

278 The result for our primary endpoint is very uncertain, with a wide confidence interval compatible with
279 both important benefit and harm. If we only emphasize this outcome, our trial can be interpreted as
280 largely “negative” although the confidence interval around the estimate includes a 25% relative
281 reduction, which is what we had deemed a reasonable minimal important difference in our sample
282 size estimation [7]. We had probably achieved a more precise estimate had we been more successful
283 with our recruitment of participants. Despite wide media coverage, we came nowhere near our target
284 of 22000. Also, a week before we opened recruitment into the trial, the health authorities changed its
285 recommendations for testing, no longer advising a confirmatory PCR-test for fully vaccinated people
286 who self-tested positive for COVID-19. Then, 10 days after we started recruitment, the authorities
287 changed its testing recommendations again, revoking the earlier advise that members of households
288 with a COVID-19-case should get tested, and recommended that only adults with symptoms should
289 test themselves. These policy changes were followed by a drastic reduction in the number of test
290 results reported to the Norwegian Surveillance System for Communicable Diseases (MSIS), i.e. the
291 data source for our main outcome. We therefore considered changing our main outcome from notified

292 COVID-19 cases to self-reported cases but decided to adhere to the protocol. In our interpretation of
293 the study findings, we have put more weight on the secondary outcomes, i.e. self-reported positive
294 COVID-19 test and symptoms consistent with respiratory infection. This decision can reasonably be
295 challenged.

296

297 There is risk of bias for our survey-based outcomes, since we lack responses from 13% of the
298 participants. The fact that there were very few notified COVID-19 cases among the non-respondents
299 indicates that this risk is low.

300 We believe the pragmatic trial approach we adopted is particularly appropriate for evaluations of
301 public health interventions where real life effectiveness is of key interest, and more so than being able
302 to demonstrate effects under ideal conditions (e.g. in a laboratory), or to understand underlying
303 mechanisms [19-21]. We are not able to clearly decipher to what extent the observed effects were
304 due to increased wearing of glasses, increased use of face masks, differences in the use of public
305 transport, decreased awareness of symptoms or decreased reporting of outcomes. Consistent with
306 the pragmatic intent, we sought to be as close as possible to the natural environment and avoid
307 artificial research scenarios that burden participants with data collection beyond a short questionnaire
308 at the end of the study. However, we collected some specific information to better understand how the
309 intervention worked, and this is consistent with the hypothesized mechanism that eye protection
310 contributes to reduced transmission of respiratory infections. One of the items in the questionnaire
311 concerned the participants' use of public transport for their daily commute and was meant to capture
312 their use of public transport at baseline. Interpreting the responses is not straightforward since the
313 data were collected later, so the responses may have been influenced by taking part in the trial,
314 including exposure to the intervention.

315 A surprise finding to us is that the use of face masks was substantially higher in the intervention
316 group, especially since difficulties with combining glasses and face masks was the most common
317 complaint among those who reported negative experiences.

318 While we believe that our findings are likely to be applicable in many settings beyond ours, there are
319 some factors that may reduce the applicability. First, we conducted our trial in a phase of the
320 pandemic where the omicron variant of the virus dominated. It is possible that new variants, or other

321 respiratory viruses, have different modes of transmission. Second, the trial took place during the
322 Norwegian winter, and the importance of transmission in public spaces may be different in other
323 seasons or cultural settings. Third, the COVID-19 incidence was exceptionally high during the time of
324 the trial. Fourth, the effects that the intervention had on behavior, e.g. face mask use, will likely vary
325 across contexts and populations.

326 **Conclusions**

327 The results from our trial seem to support our hypothesis, i.e. that recommending use of glasses in
328 public reduces the risk of being infected by respiratory viruses. The evidence is uncertain, and the
329 effect probably modest at best, but since the intervention is simple, low burden, low-cost, and with few
330 negative consequences, it is worth considering as one component in the infection control toolbox. We
331 urge others to conduct similar simple, pragmatic trials.

332

333 **Declarations**

334 **Authors' contributions**

335 AF was the Chief Investigator and led the protocol development. LGH had the original idea for the
336 study, presenting it in September 2020. AH was responsible for the data collection platform. IHE was
337 the chief analyst and conducted all statistical analyses, with support from PE who also reviewed the
338 data and the analyses. AF and IHE wrote the first manuscript draft. All authors contributed to study
339 design and development of the protocol, and all authors commented on and approved the final
340 version of the manuscript.

341

342 **Funding**

343 All running costs were covered by the Centre for Epidemic Interventions Research (CEIR),
344 Norwegian Institute of Public Health.

345

346 **Competing interests**

347 All authors declare: no competing interests.

348

349 **Acknowledgements**

350 Christopher James Rose helped with the statistical analyses. We thank journalist Hallvard Sandberg
351 who posted a tweet on 4 January 2022, challenging us to investigate the potential of using glasses as
352 protection against transmission. Dagfinn Bergsager (University of Oslo) facilitated our use of the web-
353 based questionnaire and safe data storage. For data storage and analyses we used the TSD
354 (Tjeneste for Sensitive Data) facilities, owned by the University of Oslo, operated and developed by
355 the TSD service group at the University of Oslo, IT-Department (USIT) (tsd-drift@usit.uio.no). Finally,
356 we thank all those who volunteered to take part in the trial.

357

358 **Data sharing statement**

359 The final anonymized trial dataset will be freely available to the public.

360

361 **References**

- 362 1. Maxcy KF. The Transmission of infection through the eye. *Journal of the American Medical*
363 *Association*. 1919;72(9):636-9. doi: 10.1001/jama.1919.02610090020005.
- 364 2. Coroneo MT, Collignon PJ. SARS-CoV-2: eye protection might be the missing key. *Lancet*
365 *Microbe*. 2021;2(5):e173-e4. Epub 2021/03/04. doi: 10.1016/S2666-5247(21)00040-9. PubMed
366 PMID: 33655228; PubMed Central PMCID: PMCPCMC7906687.
- 367 3. Jefferson T, Del Mar CB, Dooley L, Ferroni E, Al-Ansary LA, Bawazeer GA, et al. Physical
368 interventions to interrupt or reduce the spread of respiratory viruses. *Cochrane Database Syst Rev*.
369 2020;11:CD006207. Epub 2020/11/21. doi: 10.1002/14651858.CD006207.pub5. PubMed PMID:
370 33215698; PubMed Central PMCID: PMCPCMC8094623.
- 371 4. Chu DK, Akl EA, Duda S, Solo K, Yaacoub S, Schunemann HJ, et al. Physical distancing, face
372 masks, and eye protection to prevent person-to-person transmission of SARS-CoV-2 and COVID-19: a
373 systematic review and meta-analysis. *Lancet*. 2020;395(10242):1973-87. Epub 2020/06/05. doi:
374 10.1016/S0140-6736(20)31142-9. PubMed PMID: 32497510; PubMed Central PMCID:
375 PMCPCMC7263814.
- 376 5. Byambasuren O, Beller E, Clark J, Collignon P, Glasziou P. The effect of eye protection on
377 SARS-CoV-2 transmission: a systematic review. *Antimicrob Resist Infect Control*. 2021;10(1):156.
378 Epub 2021/11/06. doi: 10.1186/s13756-021-01025-3. PubMed PMID: 34736533; PubMed Central
379 PMCID: PMCPCMC8567128.
- 380 6. Hirt J, Janiaud P, Hemkens LG. Randomized trials on non-pharmaceutical interventions for
381 COVID-19: a scoping review. *BMJ Evid Based Med*. 2022. Epub 2022/01/29. doi: 10.1136/bmjebm-
382 2021-111825. PubMed PMID: 35086864; PubMed Central PMCID: PMCPCMC8804305.
- 383 7. Fretheim A, Hemkens LG, Helleve A, Elgersma IH, Elstrøm P, Kacelnik O. The GLasses Against
384 transmission of SARS-CoV-2 in the community (GLASSY) trial: A pragmatic randomized trial (study
385 protocol). *medRxiv*. 2022:2022.02.04.22270120. doi: 10.1101/2022.02.04.22270120.

- 386 8. Zwarenstein M, Treweek S, Gagnier JJ, Altman DG, Tunis S, Haynes B, et al. Improving the
387 reporting of pragmatic trials: an extension of the CONSORT statement. *BMJ*. 2008;337:a2390. Epub
388 2008/11/13. doi: 10.1136/bmj.a2390. PubMed PMID: 19001484; PubMed Central PMCID:
389 PMC3266844.
- 390 9. Lovlie A, Blystad H, Bruun T. MSIS celebrates 40 years. *Tidsskr Nor Laegeforen*. 2015;135(23-
391 24):2136-8. Epub 2015/12/18. doi: 10.4045/tidsskr.15.1028. PubMed PMID: 26674030.
- 392 10. Blinded assessment of GLASSY-study results [Internet]. Zenodo. 2022 [cited 24.06.2022].
- 393 11. Lehrer S, Rheinstein P. Eyeglasses Reduce Risk of COVID-19 Infection. *In Vivo*.
394 2021;35(3):1581-2. Epub 2021/04/30. doi: 10.21873/invivo.12414. PubMed PMID: 33910839;
395 PubMed Central PMCID: PMC3266844.
- 396 12. Saxena AK. Risk of COVID-19 among Spectacles Wearing Population of Northern India.
397 *Journal of Clinical and Diagnostic Research*. 2021;15(5):NC08-NC11. Epub May 1,2021. doi:
398 10.7860/jcdr/2021/48079.14899.
- 399 13. Zeng W, Wang X, Li J, Yang Y, Qiu X, Song P, et al. Association of Daily Wear of Eyeglasses
400 With Susceptibility to Coronavirus Disease 2019 Infection. *JAMA Ophthalmol*. 2020;138(11):1196-9.
401 Epub 2020/09/17. doi: 10.1001/jamaophthalmol.2020.3906. PubMed PMID: 32936214; PubMed
402 Central PMCID: PMC3266844.
- 403 14. Azzolini C, Donati S, Premi E, Baj A, Siracusa C, Genoni A, et al. SARS-CoV-2 on Ocular
404 Surfaces in a Cohort of Patients With COVID-19 From the Lombardy Region, Italy. *JAMA Ophthalmol*.
405 2021;139(9):956-63. Epub 2021/03/05. doi: 10.1001/jamaophthalmol.2020.5464. PubMed PMID:
406 33662099; PubMed Central PMCID: PMC3266844.
- 407 15. Zhang X, Chen L, Wang G, Chen L, Huang L, Cao Y, et al. Investigation of SARS-CoV-2 on
408 Ocular Surface of Coronavirus Disease 2019 Patients Using One-Step Reverse-Transcription Droplet
409 Digital PCR. *Infect Drug Resist*. 2021;14:5395-401. Epub 2021/12/24. doi: 10.2147/IDR.S335635.
410 PubMed PMID: 34938087; PubMed Central PMCID: PMC3266844.
- 411 16. Navaratnam AMD, O'Callaghan C, Beale S, Nguyen V, Aryee A, Braithwaite I, et al. Glasses
412 and risk of COVID-19 transmission - analysis of the Virus Watch Community Cohort study. *medRxiv*.
413 2022:2022.03.29.22272997. doi: 10.1101/2022.03.29.22272997.
- 414 17. Abaluck J, Kwong LH, Styczynski A, Haque A, Kabir MA, Bates-Jefferys E, et al. Impact of
415 community masking on COVID-19: A cluster-randomized trial in Bangladesh. *Science*.
416 2022;375(6577):eabi9069. Epub 2021/12/03. doi: 10.1126/science.abi9069. PubMed PMID:
417 34855513; PubMed Central PMCID: PMC3266844.
- 418 18. Bundgaard H, Bundgaard JS, Raaschou-Pedersen DET, von Buchwald C, Todsén T, Norsk JB,
419 et al. Effectiveness of Adding a Mask Recommendation to Other Public Health Measures to Prevent
420 SARS-CoV-2 Infection in Danish Mask Wearers : A Randomized Controlled Trial. *Ann Intern Med*.
421 2021;174(3):335-43. Epub 2020/11/19. doi: 10.7326/M20-6817. PubMed PMID: 33205991; PubMed
422 Central PMCID: PMC3266844.
- 423 19. Schwartz D, Lellouch J. Explanatory and pragmatic attitudes in therapeutical trials. *J Chronic*
424 *Dis*. 1967;20(8):637-48. Epub 1967/08/01. doi: 10.1016/0021-9681(67)90041-0. PubMed PMID:
425 4860352.
- 426 20. Treweek S, Zwarenstein M. Making trials matter: pragmatic and explanatory trials and the
427 problem of applicability. *Trials*. 2009;10:37. Epub 2009/06/06. doi: 10.1186/1745-6215-10-37.
428 PubMed PMID: 19493350; PubMed Central PMCID: PMC3266844.
- 429 21. Zwarenstein M. 'Pragmatic' and 'explanatory' attitudes to randomised trials. *J R Soc Med*.
430 2017;110(5):208-18. Epub 2017/05/16. doi: 10.1177/0141076817706303. PubMed PMID: 28504072;
431 PubMed Central PMCID: PMC3266844.

432

433

434 **Table S1. Crude per protocol analysis**, i.e. only including those in the intervention group who
435 reported wearing glasses more than 50% of the time, and those in the control group who reported
436 wearing glasses less than 50% of the time.

437

438 **Table S2. Subgroup analysis using notified COVID-19 cases as outcome.**

439

440 **Table S3. Subgroup analysis for using self-reported COVID-19 cases as outcome.**