

Extended Data Table 1. Demographics for SARS-CoV-2 cases enrolled June 6, 2020 – March 11, 2022

		Enrolled September 2021 - March 2022	Enrolled June 2020 - April 2021 ^a	All participants
Number of participants		32	61	93
Number of exhaled breath samples		50	100	150
Variant, N (%)	Ancestral strains and other	0 (0)	57 (93)	57 (61)
	Alpha	0 (0)	4 (7)	4 (4)
	Delta	3 (9)	0 (0)	3 (3)
	Omicron BA.1	8 (25)	0 (0)	8 (9)
	Omicron BA.1.1	14 (44)	0 (0)	14 (15)
	Omicron BA.2	7 (22)	0 (0)	7 (8)
Female, N (%)		13 (41)	23 (38)	36 (39)
Age, mean ± SD		27.2 ± 15.3	23.6 ± 9	24.8 ± 11.6
Age group, N (%)	<18	3 (9)	1 (2)	4 (4)
	18-45	24 (75)	57 (93)	81 (87)
	>45	5 (16)	3 (5)	8 (9)
Race/Ethnicity, N(%)	White	19 (59)	48 (79)	67 (72)
	Black/African American	5 (16)	7 (12)	12 (13)
	Hispanic	5 (16)	8 (13)	13 (14)
BMI, mean ± SD		24.7 ± 5.4	25.2 ± 4.5	25 ± 4.8
Chronic respiratory illness, N (%)^b		6 (19)	13 (21)	19 (20)
Vaccination status, N (%)^c	Boosted	20 (63)	0 (0)	20 (22)
	Fully vaccinated, not boosted	12 (37)	0 (0)	12 (13)
	Partially vaccinated	0 (0)	3 (5)	3 (3)
	Not vaccinated	0 (0)	58 (95)	58 (62)
Anti-spike RBD antibody (IgG), N (%)		32 (100)	6 (10) ^d	38 (41)
Anti-nucleocapsid antibody (IgG), N (%)		5 (16)	N/A ^e	5 (5)
Ever symptomatic, N (%)		32 (100)	58 (95)	90 (97)
Symptomatic participants	Days post symptom onset^f, mean ± SD (range)	3 ± 2 (1-7)	5 ± 3 (0-13)	4 ± 2 (0-13)
	Coughs per 30 min, mean ± SD (range)	8 ± 15 (0-69)	1 ± 4 (0-24)	4 ± 10 (0-69)
	Median upper respiratory symptoms^g (IQR)	3.5 (2 - 6)	2 (1 - 3.8)	3 (1 - 4)
	Median lower respiratory symptoms (IQR)	1 (0.2 - 2)	0 (0 - 1.8)	1 (0 - 2)
	Median systemic symptoms (IQR)	2 (1 - 6)	1 (0 - 3)	2 (0 - 4)
	Median gastrointestinal symptoms (IQR)	1 (0 - 2)	0 (0 - 1)	0 (0 - 1)
	Temperature (C), mean ± SD	37 ± 0.3	37.2 ± 0.3	37.1 ± 0.3
	Oxygen saturation (SpO2), mean ± SD	97.9 ± 0.8	97.8 ± 1	97.8 ± 1

BMI = Body mass index; RBD = Receptor Binding Domain; IgG = Immunoglobulin class G; IQR = Interquartile range

- a. Includes previously reported cases²
- b. Chronic respiratory illness = volunteers with any chronic obstructive pulmonary disease, asthma, other lung diseases
- c. Boosted = received one vaccine booster dose ≥ 8 days prior to study enrollment; Fully vaccinated, not boosted = received only two doses of BNT162B2, mRNA-1273, or NVX-CoV2373, or one dose of Ad26.COV2 ≥ 14 days prior to study enrollment; Partially vaccinated = received only one dose of BNT162B2 or mRNA-1273
- d. Serologic status data for four participants were missing due to a lack of blood samples
- e. Anti-nucleocapsid antibodies were not measured for these participants
- f. Days since symptom onset at the time of each sample collection visit
- g. Symptoms at the time of each sample collection visit. Sixteen symptoms were rated from 0 to 3 with a maximum possible composite score of 15 for upper respiratory, 9 for lower respiratory, 12 for systemic symptoms and 12 for gastrointestinal symptoms

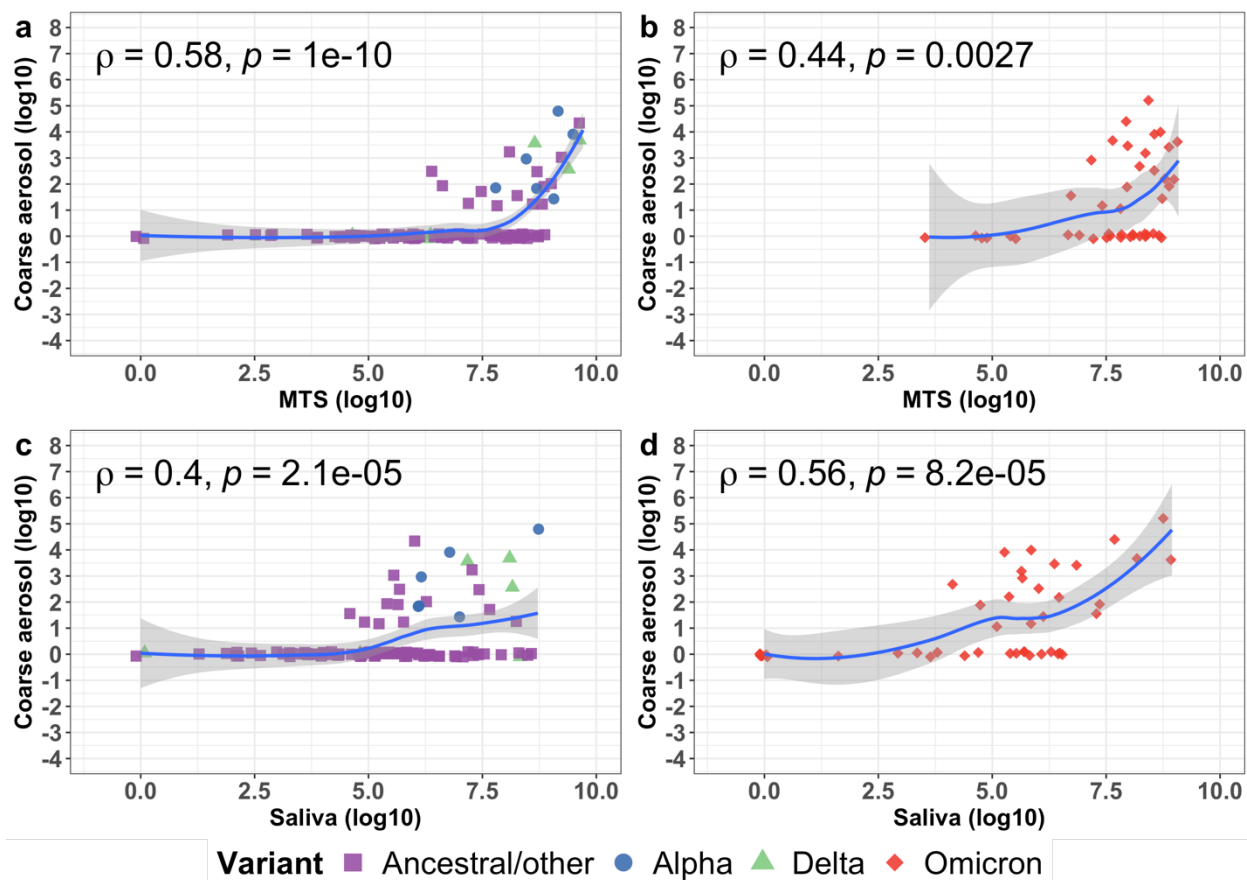
Extended Data Table 2. Vaccine and booster types received by Delta and Omicron cases, September 14, 2021 – March 11, 2022.

		Booster type			
		BNT162b2	mRNA-1273	NVX-CoV2373	Not boosted
Vaccine Type	BNT162b2	9	5	0	10
	mRNA-1273	1	3	0	0
	Ad26.COVS.2	1	1	0	1
	NVX-CoV2373	0	0	0	1

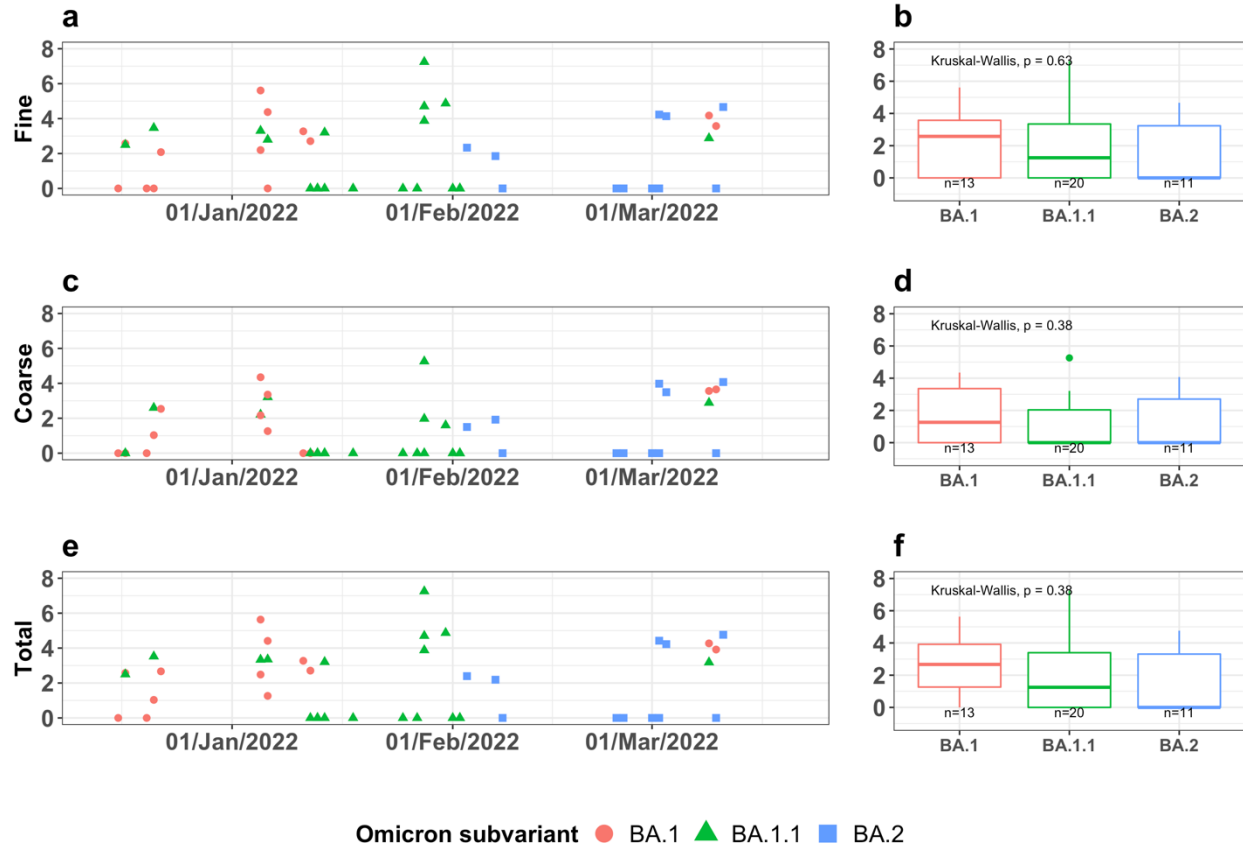
Extended Data Table 3. SARS-CoV-2 in respiratory and fomite samples from Delta and Omicron participants, September 14, 2021 – March 11, 2022

Sample type	Participants with ≥ 1 PCR positive sample, n/N (%) ^a	Participants with ≥ 1 culture positive sample, n/N (%) ^b	PCR Positive Samples, n/N (%) ^c	RNA copies per sample	
				GM (95% CI) ^d	Maximum ^e
Saliva	27/32 (84)	8/31 (26)	42/50 (84)	6.6×10^4 (9.5×10^3 , 4.6×10^5)	8.8×10^8
Mid-turbinate Swab	32/32 (100)	26/31 (84)	50/50 (100)	3.6×10^7 (1.3×10^7 , 9.9×10^7)	4.0×10^9
Fomite (mobile phone screen)	14/30 (47)	0/26 (0)	20/47 (43)	16 (2.1, 130)	4.5×10^5
Coarse EBA ^f	16/32 (50)	1/31 (3)	23/50 (46)	29 (7.1, 120)	1.8×10^5
Fine EBA	20/32 (62)	3/31 (10)	28/50 (56)	150 (35, 600)	1.8×10^7
Total EBA (fine + coarse)	21/32 (66)	4/31 (13)	51/100 (51)	200 (52, 790)	1.8×10^7

- a. Number (n) of participants (N) with at least one sample \geq the limit of detection (LOD, 62 copies/mL for saliva and 75 copies/sample for other sample types)
- b. Number (n) of participants with samples subjected to culture (N) with at least one sample giving a positive culture for SARS-CoV-2
- c. Number (n) of samples (N) \geq LOD, with at least 1 replicate with confirmed amplification after inspection and quality control
- d. GM = geometric mean. The GMs were computed by controlling for random effects of subject and sample nested within subjects and for censoring by the limit of detection using a linear mixed-effects model for censored responses (R package “lme4”²⁴)
- e. The largest quantity of RNA copies detected based on the mean of replicate qRT-PCR aliquots
- f. EBA = Exhaled breath aerosol. Each EBA sample was collected using a Gesundheit-II machine for 30 minutes

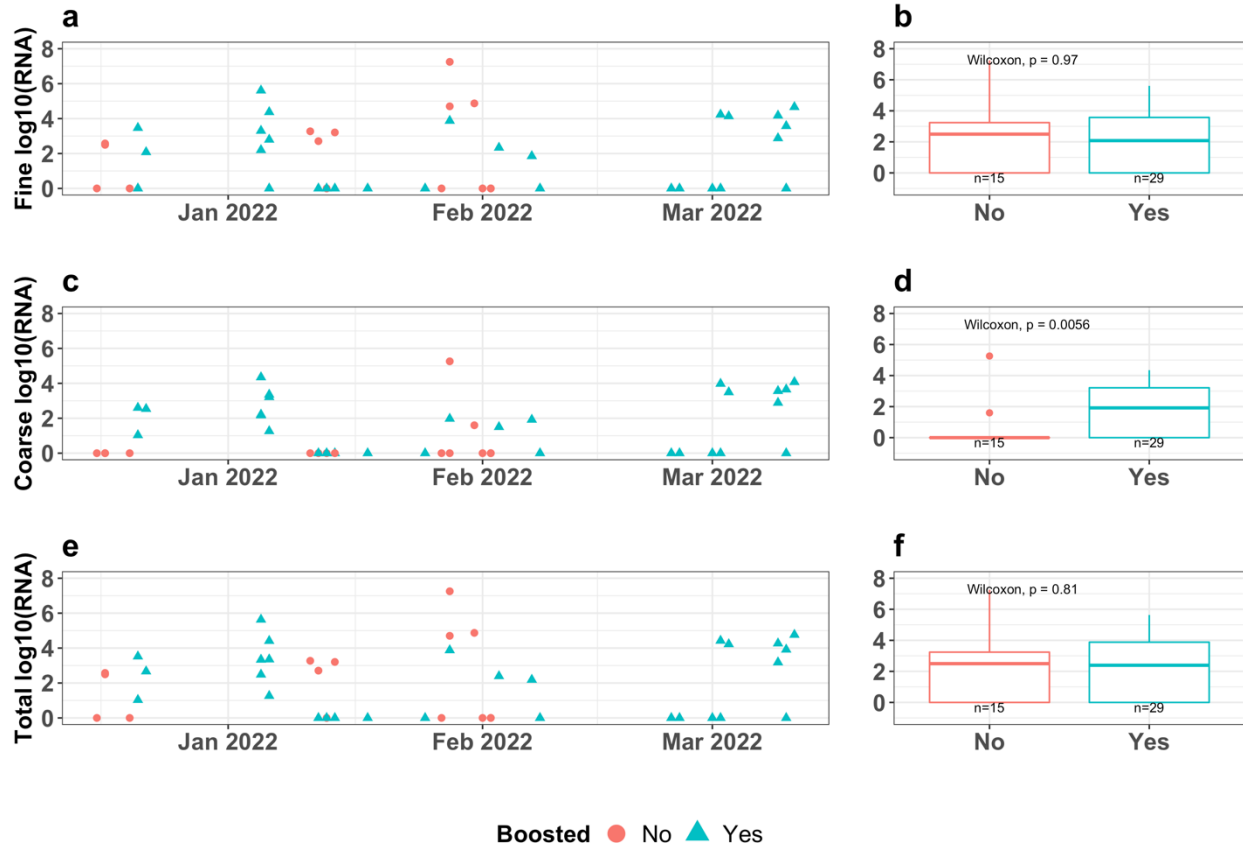


Extended Data Figure 1. Correlation between SARS-CoV-2 RNA copies in coarse exhaled breath aerosol (>5 μm in diameter) and mid-turbinate swab (MTS) samples as well as saliva, June 6, 2020 – March 11, 2022. The locally weighted smoothing (LOESS) curves demonstrate the correlation of the RNA copies on the log 10 scale between *coarse* EBA and MTS (**a, b**) as well as *coarse* EBA and saliva (**c, d**). The shaded areas represent the 95% confidence interval of the smooth curves. Each point represents samples collected from an individual on a specific day. Rho (ρ) is the Spearman correlation coefficient. **a** and **c** depict the correlations among pre-Omicron (ancestral/other, Alpha, and Delta) infections. **b** and **d** depict the correlations among Omicron (including BA.1, BA.1.1, BA.2) infections. *Ancestral/other* means SARS-CoV-2 ancestral strains and other variants not associated with increased transmissibility.



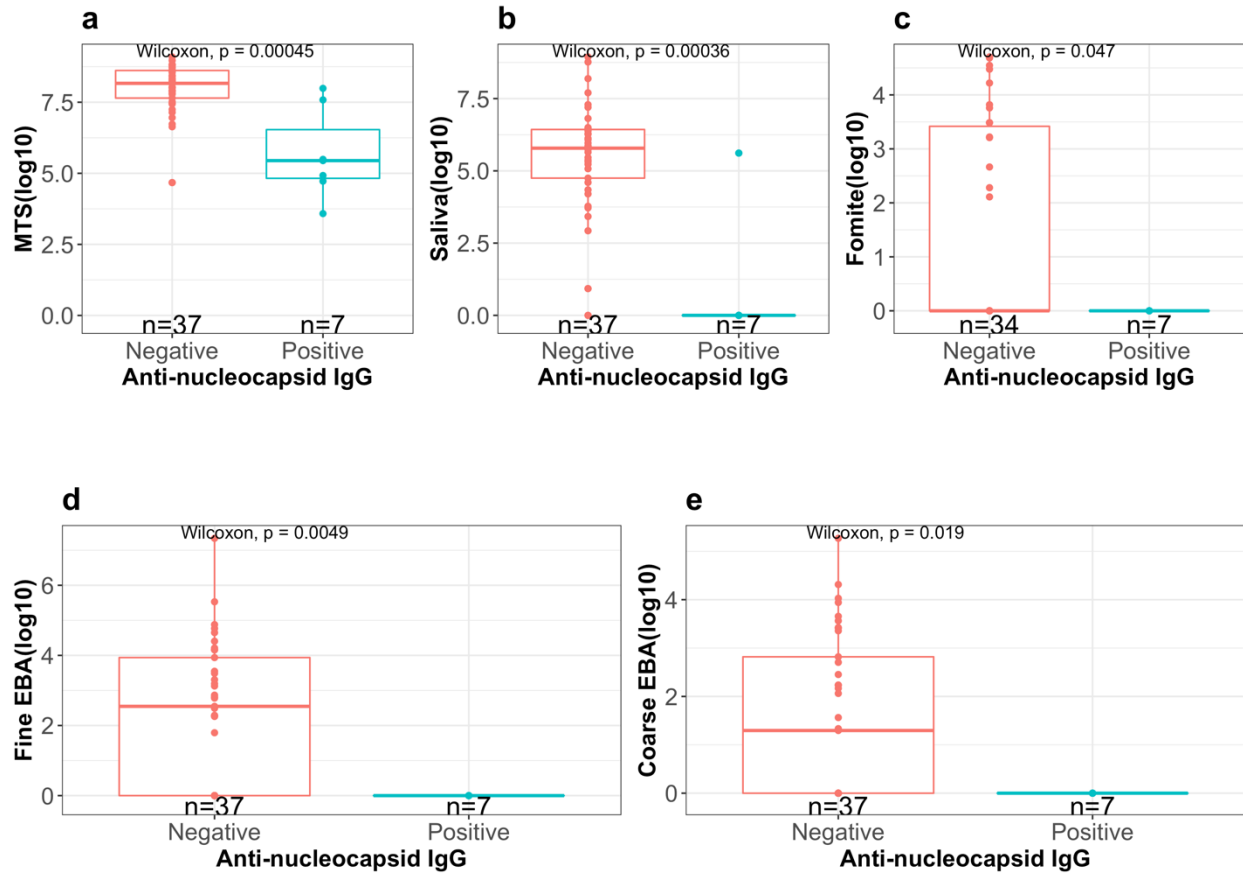
Extended Data Figure 2. Viral RNA copies (log₁₀ scale) in fine and coarse exhaled breath aerosol (EBA) samples for SARS-CoV-2 Omicron subvariants over time, December 2021 – March 2022.

a, c, e, Scatter plots depict the change of viral RNA copies on the log₁₀ scale over time. Each point represents a sample collected for an individual on a specific date. **b, d, f,** Boxplots present the comparison of viral RNA copies on the log₁₀ scale by Omicron subvariants. The Kruskal-Wallis p-value indicates the global comparison among the three subvariants. None of the pairwise comparison between two subvariants is significant at the level of 0.05. The *n* indicates the number of samples included in each boxplot. **a, b,** Fine EBA ($\leq 5 \mu\text{m}$ in diameter); **c, d,** Coarse EBA ($>5 \mu\text{m}$ in diameter); **e, f,** Total EBA (fine and coarse combined).



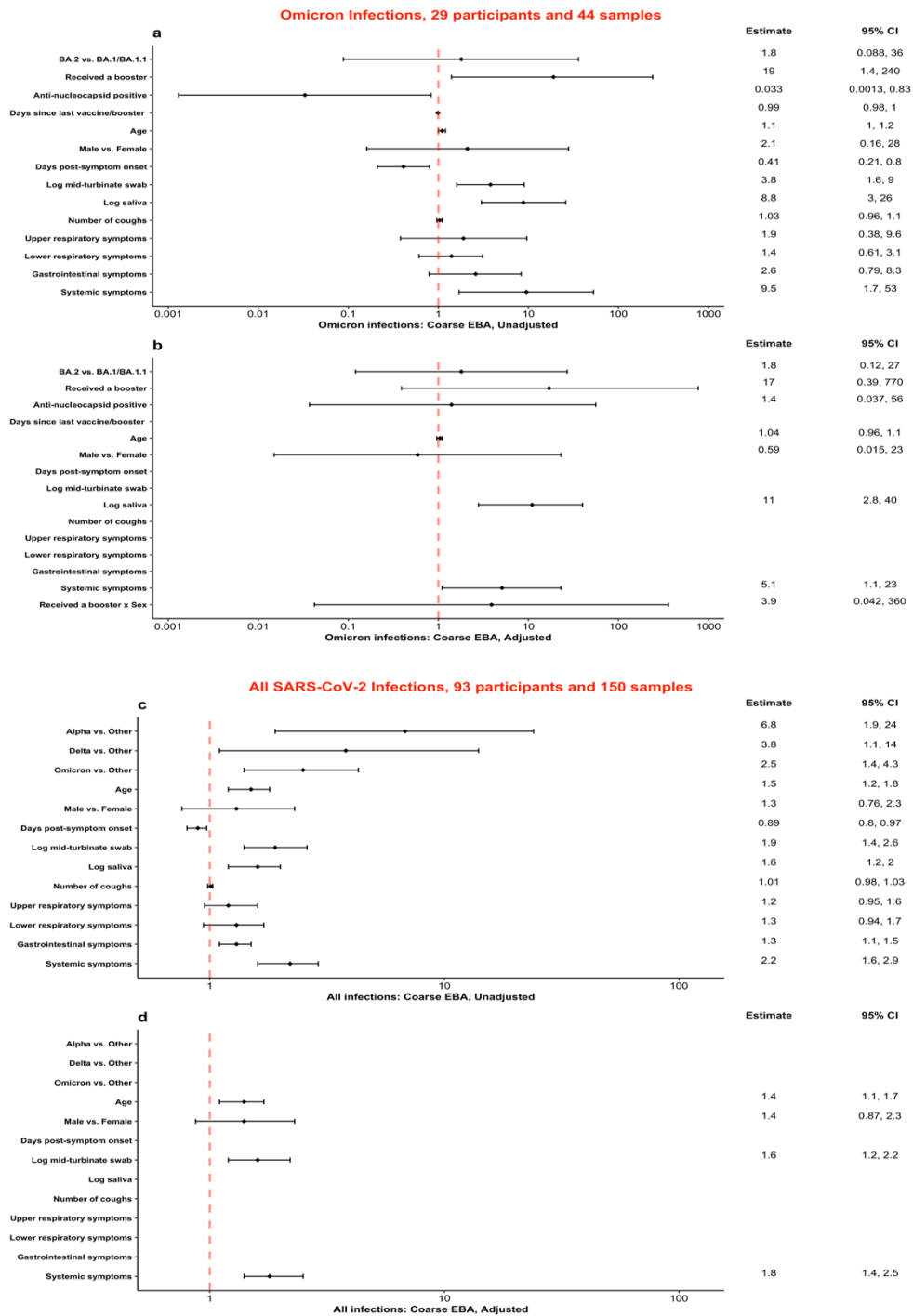
Extended Data Figure 3. Viral RNA load in exhaled breath aerosol samples by booster status for Omicron cases, December 16, 2021 – March 11, 2022.

a, c, e, Scatter plots depict the change of viral RNA copies on the log₁₀ scale over time. Each point represents a sample collected for an individual on a specific date. **b, d, f**, Boxplots present the comparison of viral RNA copies on the log₁₀ scale by booster status. The n indicates the number of samples included in each boxplot. **a, b**, Fine EBA ($\leq 5 \mu\text{m}$ in diameter); **c, d**, Coarse EBA ($>5 \mu\text{m}$ in diameter); **e, f**, Total EBA (fine and coarse combined).



Extended Data Figure 4. Viral RNA copies (log₁₀ scale) by status of anti-nucleocapsid IgG for Omicron cases, December 16, 2021 – March 11.

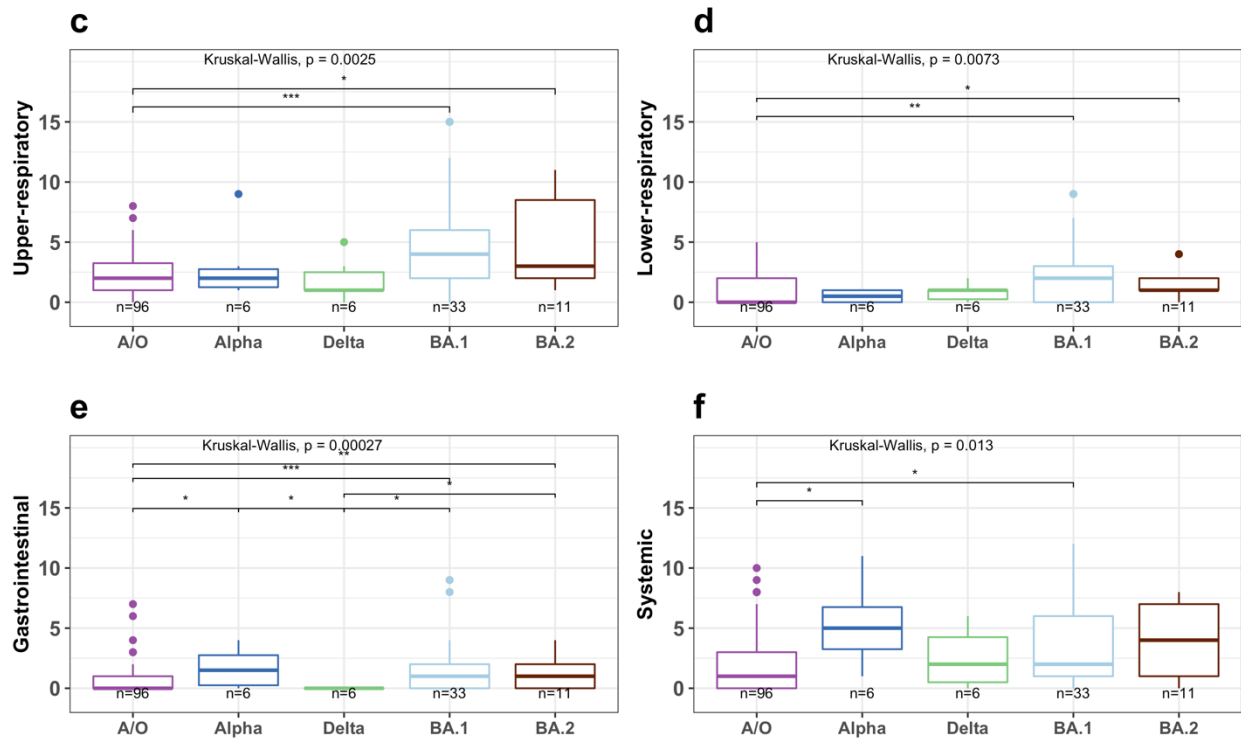
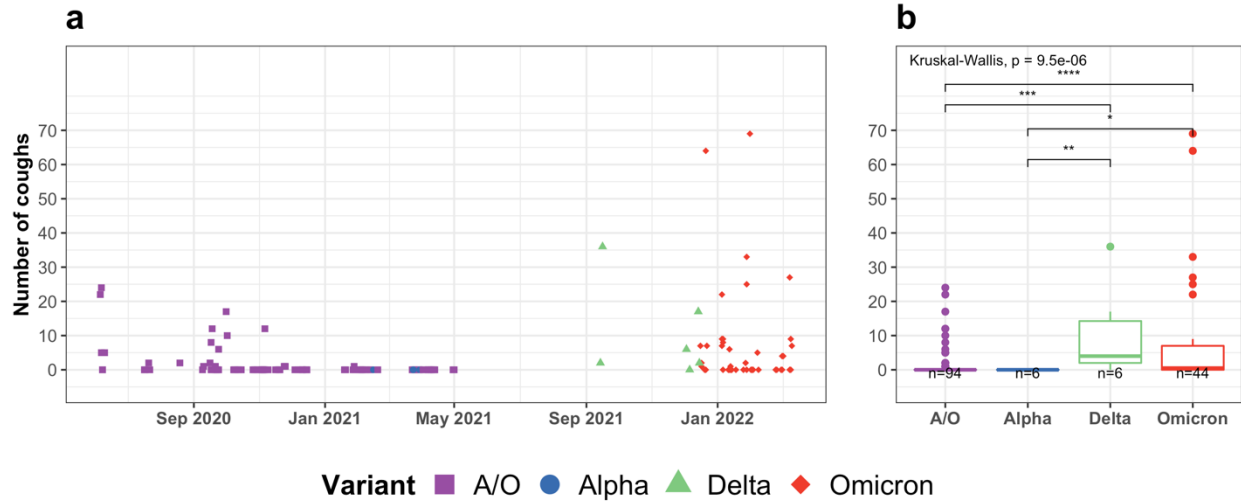
Boxplots present the comparison of viral RNA copies on the log₁₀ scale by the status of anti-nucleocapsid IgG at baseline for 29 Omicron cases (24 negative, 5 positive). The *n* indicates the number of samples included in each boxplot. **a**, Mid-turbinate swab (MTS); **b**, Saliva; **c**, Fomite (swab of participant’s mobile phone); **d** and **e**, *Fine* ($\leq 5 \mu\text{m}$ in diameter) and *Coarse* ($>5 \mu\text{m}$ in diameter) exhaled breath aerosol (EBA) from 30-minute sampling events. The *n* at the bottom of the plots indicates the number of samples.



Extended Data Figure 5. Predictors for SARS-CoV-2 RNA loads in *coarse* exhaled breath aerosol.

a-b, Predictors for viral RNA loads in *coarse* exhaled breath aerosol among 29 participants with Omicron infections enrolled from December 16, 2021 to March 11, 2022. **c-d**, Predictors of viral RNA loads in *coarse* exhaled breath aerosol over the course of the pandemic from June 6, 2020 to March 11, 2022.

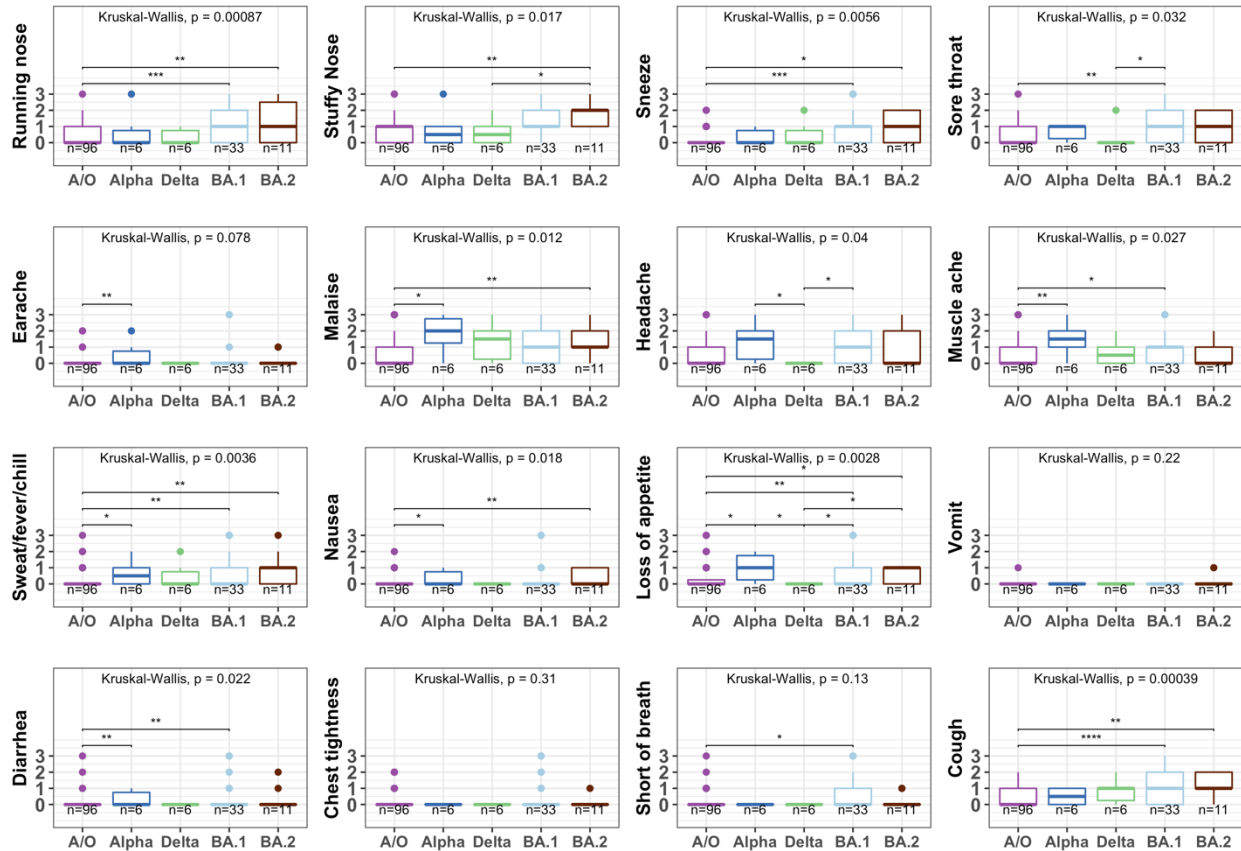
Effect estimates and their 95% confidence intervals from linear mixed effect models (observations censored by the limit of detection coded as 1) are shown as the ratio of RNA copy number of samples: variant to variants other than Alpha/Delta/Omicron, Omicron BA.2 to Omicron BA.1 and BA.1.1, received to not received a booster, anti-nucleocapsid positive to negative, male to female, or as the fold-increase in RNA copy number for a 10-year increase in age, 1-day increase in day post-symptom onset or days since last vaccine/booster, 1-count increase in numbers of coughs, and an interquartile range change in symptom scores, mid-turbinate swab and saliva RNA copy number.



Extended Data Figure 6. Number of coughs per 30-minute sampling and composite symptom scores for SARS-CoV-2 variants over time, June 6, 2020 – March 11, 2022.

a, Each point in the scatter plot represents a sample collected for an individual on a specific date. **b**, The boxplots present the comparison of number of coughs per 30-minute sampling session by SARS-CoV-2

variants. **c - f**, The boxplots present the comparison of four composite symptom scores by SARS-CoV-2 variants/subvariants. The Kruskal-Wallis p-value indicates the global comparison among the four (**a-b**) or five (**c - f**) variants/subvariants. The asterisks indicate the pairwise comparison. Only those with a p-value less than 0.05 are shown (*: $p \leq 0.05$; **: $p \leq 0.01$; ***: $p \leq 0.001$; ****: $p \leq 0.0001$). The n indicates the number of samples included in each boxplot. *A/O* means SARS-CoV-2 ancestral strains and other variants not associated with increased transmissibility.



Extended Data Figure 7. Self-reported symptoms for SARS-CoV-2 variants over time, June 6, 2020 – March 11, 2022.

The boxplots present the comparison of 16 self-reported symptoms (on a scale of zero to three) by SARS-CoV-2 variants/subvariants. The Kruskal-Wallis p-value indicates the global comparison among the five variants/subvariants. The asterisks indicate the pairwise comparison. Only those with a p-value less than 0.05 are shown (*: $p \leq 0.05$; **: $p \leq 0.01$; ***: $p \leq 0.001$; ****: $p \leq 0.0001$). The n indicates the number of samples included in each boxplot. A/O means SARS-CoV-2 ancestral strains and other variants not associated with increased transmissibility.