

Key population size, HIV prevalence, and ART coverage in sub-Saharan Africa: systematic collation and synthesis of surveillance data

Supplementary Materials

Oliver Stevens, Keith Sabin, Sonia Arias Garcia, Rebecca Anderson, Kalai Willis, Abu Abdul-Quader, Anne McIntyre, Elizabeth Fearon, Emilie Grard, Alice Stewart-Brown, Frances Cowan, Louisa Degenhardt, Jinkou Zhao, Avi Hakim, Katherine Rucinski, Isabel Sathane, Makini Boothe, Lydia Atuhuire, Peter Nyasulu, Lucy Platt, Brian Rice, Wolfgang Hladik, Stefan Baral, Mary Mahy, Jeffrey W. Eaton

Oliver Stevens

MRC Centre for Global Infectious Disease Analysis, School of Public Health, Imperial College London

St. Mary's Hospital Campus Norfolk Place London W2 1PG United Kingdom

o.stevens@imperial.ac.uk

Table of Contents

Supplementary Text S1: Statistical model details	3
Supplementary Figure S1: MSM population size estimate proportions in Eastern and Southern Africa (ESA) and Western and Central Africa (WCA).....	7
Supplementary Figure S2: Age group sensitivity analysis for MSM population proportion.	8
Supplementary Figure S3: ART coverage model sensitivity analysis.	9
Supplementary Table S1: Key population databases.....	12
Supplementary Table S2: Extracted data indicators	13
Supplementary Table S3: Key population data sources.....	14
Supplementary Table S4: National availability of population size, HIV prevalence, and ART coverage data by key population	40
Supplementary Table S5: HIV prevalence model regression results.	41
Supplementary Table S6: ART coverage model regression results.....	42
Supplementary Table S7: Country-specific urban KPSE proportions (%).....	43
Supplementary Table S8: Country-specific KP HIV prevalence estimates	45
Supplementary Table S9: Country-specific KP ART coverage estimates among age 15-49 years in 2021	47
Supplementary Table S10: MSM age group denominator sensitivity analysis.....	49

1 **Supplementary Text S1: Statistical model details**

2 *Population size*

3 We modelled national key population proportions with a spatial smoothing model allowing population
4 proportions to be correlated between geographically neighbouring countries. Each key population
5 was modelled separately, with logit population proportion assumed to be normally distributed with
6 mean μ and standard deviation σ , estimated from the data. μ is decomposed into a model intercept
7 β_0 , a fixed effect for study method, X for $m \in \text{Empirical, PLACE / Mapping, Other methods}$ using
8 Empirical methods as the base group, a random effect for study method, δ for $j \in 1, 2 \dots 9$, an intrinsic
9 conditional autoregressive (ICAR) spatial smoothing random effect at the national level, θ for $i \in$
0 $1, 2, \dots 38$, and a study *iid* random effect, ϵ for $s \in 1, 2, \dots n$.

$$1 \quad \text{logit}(p_i) \sim N(\mu_i, \sigma)$$

$$2 \quad \mu_i = \beta_0 + \beta_1 X_m + \delta_j + \theta_i + \epsilon_s$$

$$3 \quad \beta_0, \beta_1 \sim N(0, 5)$$

$$4 \quad \theta_i \sim \text{ICAR}(\sigma_\theta)$$

$$5 \quad \delta_j \sim N(0, \sigma_j)$$

$$6 \quad \epsilon_s \sim N(0, \sigma_s)$$

8 *HIV prevalence*

9 We modelled the relationship between key population HIV prevalence and total population HIV
0 prevalence (age 15-49 years) separately for each key population. Missing denominators were
1 imputed using the 25th centile of known denominators (FSW n=192; MSM n=108; PWID n=41).

2 The number of key population members living with HIV, X , is assumed to be betabinomially
3 distributed with HIV positivity, p for a given age group, a , year, t , and province, x . p is decomposed
4 into a model intercept β_0 , fixed effects for matched total population HIV prevalence, ρ ; region, $R \in$
5 ESA, WCA ; an interaction between matched total population HIV prevalence and region; and study
6 method, M where $M = 0$ for laboratory confirmed HIV status and $M = 1$ for self-reported *HIV status*,
7 and a study *iid* random effect, ϵ for $s \in 1, 2, \dots, n$.

$$8 \quad X_{a,t,x} \sim \text{Binom}(n, p_{a,t,x})$$

$$9 \quad \text{logit}(p_{a,t,x}) = \beta_0 + \beta_1 \text{logit}(\rho_{a,t,x}) + \beta_2 R + \beta_3 \text{logit}(\rho_{a,t,x}) * R + \beta_4 M + \epsilon_s$$

$$0 \quad \beta_{0:4} \sim N(0, 5)$$

$$1 \quad \epsilon_s \sim N(0, \sigma_\epsilon)$$

2 *ART coverage*

3 We modelled key population ART coverage as a function of total population ART coverage,
4 analogously to HIV prevalence. For each key population, missing denominators were imputed using
5 the 25th centile of known denominators (FSW n=44; MSM n=23; PWID n=28).

6 The number of key population members on ART, A , is assumed to be beta-binomially distributed with
7 the probability of being on treatment, p for a given age group, a , year, t , and province, x . p is
8 decomposed into a model intercept β_0 , fixed effects for matched total population ART coverage, α
9 study method, M where $M = 0$ for laboratory confirmed ART and $M = 1$ for self-reported ART usage,
0 and a study *iid* random effect, ϵ for $s \in 1, 2, \dots, n$. Insufficient data were available to estimate region-
1 specific trends.

$$2 \quad A_{a,t,x} \sim \text{Binom}(n, p_{a,t,x})$$

3

$$\text{logit}(p_{a,t,x}) = \beta_0 + \beta_1 \text{logit}(\alpha_{a,t,x}) + \beta_2 M + \epsilon_s$$

4

$$\beta_{0:2} \sim N(0,5)$$

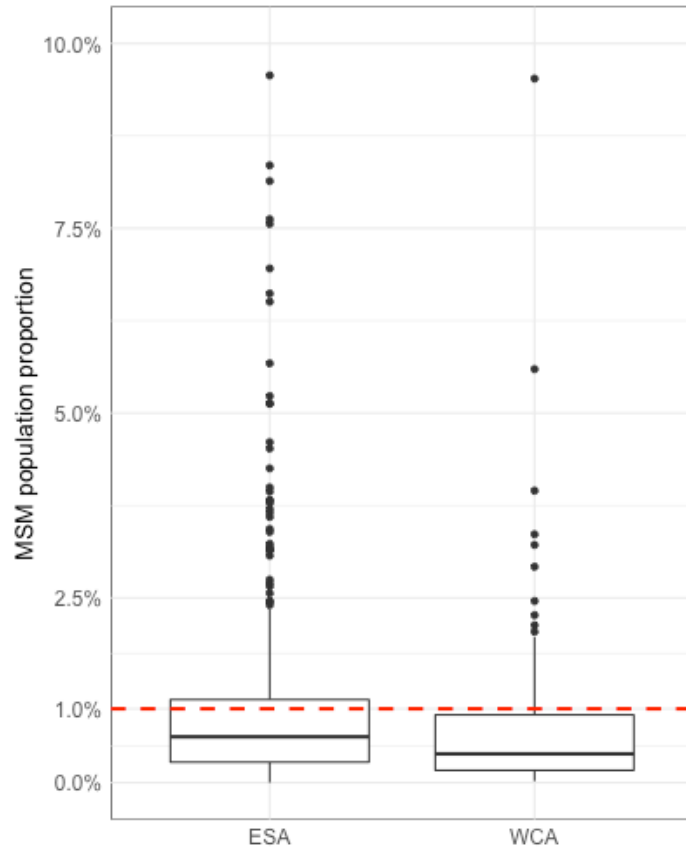
5

$$\epsilon_s \sim N(0, \sigma_\epsilon)$$

6

7 **Supplementary Figures**

8



0

1 **Supplementary Figure S1: MSM population size estimate proportions in Eastern and Southern**
2 **Africa (ESA) and Western and Central Africa (WCA).** Boxplots represent median and interquartile
3 range of observations. Red dashed line is the recommended 1% threshold for MSM population
4 proportions

5

6



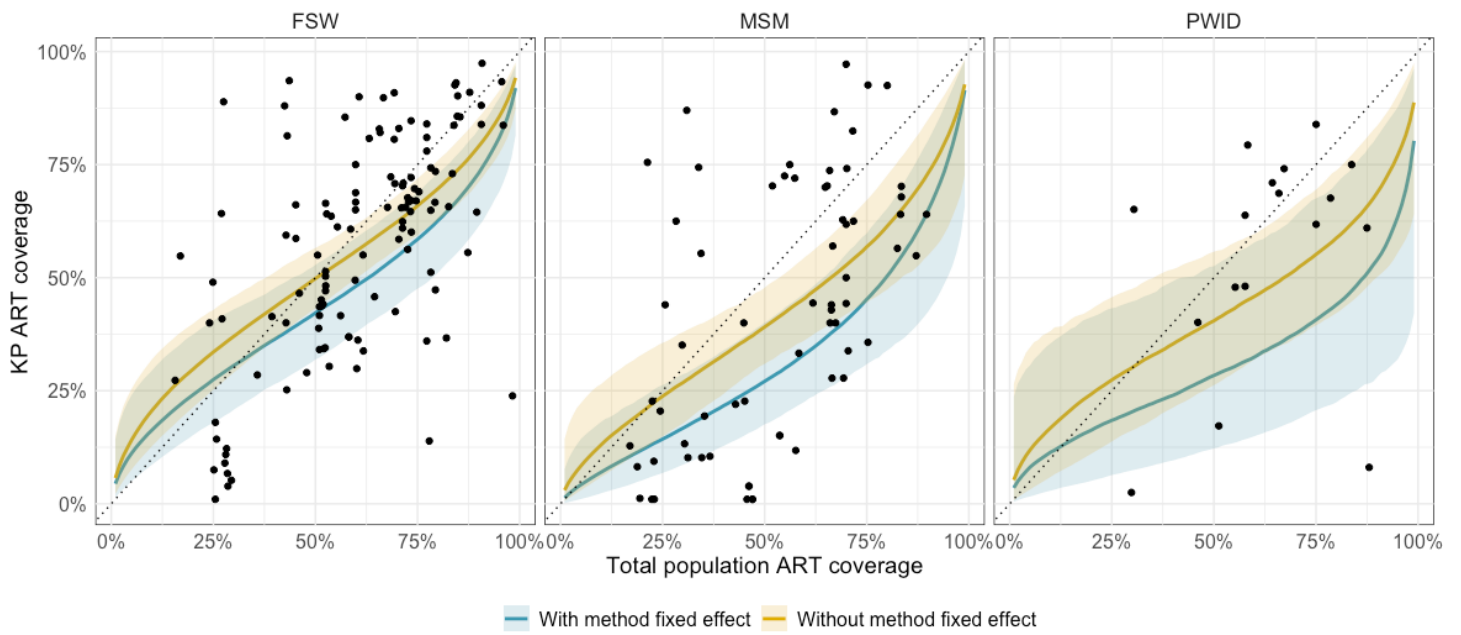
7

8

9 **Supplementary Figure S2: Age group sensitivity analysis for MSM population proportion.**

0 Estimates calculated using ages 15-29 years as the matched total population denominator instead of
1 ages 15-49 years assumed in primary analysis.

2



3

4 **Supplementary Figure S3: ART coverage model sensitivity analysis.** Yellow estimates are as in
 5 primary analysis, omitting a fixed effect for study method (self-report or diagnostically confirmed ART
 6 status). Blue estimates include a fixed effect for study method.

7

9 Supplementary Tables

0 **Supplementary Table S1: Key population databases**

Database	Link	Years extracted	Description	KP indicators captured	Data entry
UNAIDS Global AIDS Monitoring (GAM)	https://www.unaids.org/en/global-aids-monitoring	2010-2022	Global monitoring tool to track progress towards key targets and assess state of HIV epidemic	PSE, HIV prevalence, ART coverage/viral load suppression. Programme HIV prevention data on condoms, opioid substitution therapy, and needle and syringe programmes. Raw data or modelled estimates	National government annual data submission
UNAIDS KP Atlas	https://kpatlas.unaids.org	2010-2022	Consolidated database maintained by UNAIDS, supported by Global Fund, WHO, US CDC	PSE, HIV prevalence, ART coverage, HIV testing, HIV prevention data, laws and stigma indices Raw data or modelled estimates	UNAIDS-maintained. Aligned with GAM since 2017
Global Fund	Private	2010-2017	Global Fund surveillance database	PSE, HIV prevalence, ART coverage, HIV prevention Raw data or modelled estimates	National governments through grant reporting. In recent years, aligned with KP Atlas and GAM
CDC	Private	2010-2022	CDC surveillance spreadsheet	Majority PSE, small amount of HIV prevalence and ART coverage data Raw data or modelled estimates	CDC maintained
Global.HIV repository	https://www.ncbi.nlm.nih.gov/pmc/articles/PMC6278072/	2010-2017	Systematic review database	Wide range of epidemiological, human rights, and healthcare indicators Raw data or modelled estimates	Maintained by Johns Hopkins University
Degenhardt et al. PWID systematic review	https://pubmed.ncbi.nlm.nih.gov/29074409/	2010-2017	Systematic review database	PSE, HIV prevalence, ART coverage for PWID Raw data only	Maintained by University of New South Wales

1 **Supplementary Table S2: Extracted data indicators**

Indicator	Notes
Country	-
Method	<p>For PSE one of:</p> <ul style="list-style-type: none"> • 2S-CRC • 3S-CRC • SS-PSE • Service multiplier • Object multiplier • Event multiplier • PLACE/Mapping • Multiple methods – empirical • Multiple methods – mixture • Delphi • Wisdom of the crowds • Enumeration • Key informant interviews • Literature estimate <p>For HIV prevalence and ART coverage: Self-report or laboratory confirmed</p>
Key population	FSW/MSM/PWID/TG/TGM/TGW
Age group	-
Area	Survey area. In cases when multiple areas are reported as an aggregate, disaggregate to a single area per row
Year	-
Lower estimate	If available
Central estimate	-
Upper estimate	If available
Lower proportion estimate	PSE only, if available
Central proportion estimate	PSE only, if available
Upper proportion estimate	PSE only, if available
Denominator	For HIV prevalence and ART coverage only
Source	-

2

3 Supplementary Table S3: Key population data sources

Indicator	Country	Year	KP	Source
ART coverage	Angola	2017	FSW	2017 PLACE
HIV prevalence	Angola	2017	FSW	Achieving The First 90 For Key Populations In Sub-Saharan Africa Through Venue-Based Outreach: Challenges And Opportunities For HIV Prevention Based On PLACE Study Findings From Malawi And Angola
HIV prevalence	Angola	2017	FSW	Relatorio Do Estudo PLACE Do Linkage 2016/2017 Em 5 Provincias De Angola
PSE	Angola	2015	FSW	Prevalencia Do VIH, Factores Biologicos E Comportamentais Da Infeccao Entre As Profissionais Do Sexo (MTS) Em Angola
PSE	Angola	2017	FSW	Mapeamento Programatico E Prevalencia De VIH E Outras Its Entre Populacoes Chave De Angola: Estudo PLACE 2017
ART coverage	Angola	2017	MSM	2017 PLACE
HIV prevalence	Angola	2011	MSM	Population Size, HIV, And Behavior Among MSM In Luanda, Angola: Challenges And Findings In The First Ever HIV And Syphilis Biological And Behavioral Survey, J AIDS Journal Of Acquired Immune Deficiency Syndromes, 15 Aug. 2014, Volume 66, Issue 5, P544-551
HIV prevalence	Angola	2017	MSM	Relatorio Do Estudo PLACE Do Linkage 2016/2017 Em 5 Provincias De Angola
PSE	Angola	2011	MSM	Population Size, HIV, And Behavior Among MSM In Luanda, Angola: Challenges And Findings In The First Ever HIV And Syphilis Biological And Behavioral Survey, J AIDS Journal Of Acquired Immune Deficiency Syndromes, 15 Aug. 2014, Volume 66, Issue 5, P544-551
PSE	Angola	2017	MSM	Mapeamento Programatico E Prevalencia De VIH E Outras Its Entre Populacoes Chave De Angola: Estudo PLACE 2017
ART coverage	Angola	2017	TG	2017 PLACE
PSE	Angola	2017	TG	Mapeamento Programatico E Prevalencia De VIH E Outras Its Entre Populacoes Chave De Angola: Estudo PLACE 2017
HIV prevalence	Benin	2011	FSW	2012 Benin IBBS FSW And Waitress
HIV prevalence	Benin	2015	FSW	Enquete De Surveillance De Deuxieme Generation Relative Aux IST, VIH Et Sida Au Benin (Esdg-2015)
HIV prevalence	Benin	2017	FSW	Enquete De Surveillance De Deuxieme Generation Relative Aux IST, VIH Et Sida Au Benin (Esdg-2017)
HIV prevalence	Benin	2013	MSM	2013 Benin IBBS
HIV prevalence	Benin	2014	MSM	Etude De Suivi De Cohorte Pour L'Estimation De L'Incidence Du VIH Et De La Taille De La Population Des HSH Au Benin

HIV prevalence	Benin	2015	MSM	Enquete De Surveillance De Deuxieme Generation (Esdg) Sur Le VIH Au Sein De La Population Des Hommes Ayant Des Rapports Sexuels Avec D,Aoautres Hommes (HSH) Au Benin
HIV prevalence	Benin	2017	MSM	Enquete De Surveillance De Deuxieme Generation (Esdg) Sur Le VIH Et Le Sida Au Sein De La Population Des Hommes Ayant Des Rapports Sexuels Avec D,Aoautres Hommes (HSH) Au Benin
HIV prevalence	Benin	2013	PWID	Enqueacte De Surveillance De Deuxieaame Geaaneaaration Du VIH Et Des IST Aupreaas Des Utilisateurs De Drogues Injectables Au Beaanin
HIV prevalence	Benin	2015	PWID	Enquete De Surveillance De Deuxieme Generation (Comportementale Et Biologique) 2015
HIV prevalence	Benin	2017	PWID	Enquete De Surveillance De Deuxieme Generation Relative Aux IST, VIH, Et Sida (Esdg 2017)
HIV prevalence	Benin	2020	TG	Enquete Bio-Comportementale, Cartographie Et Estimation De La Taille Des Transgenres Au Benin, 2020
PSE	Benin	2020	TG	Enquete Bio-Comportementale, Cartographie Et Estimation De La Taille Des Transgenres Au Benin, 2020
ART coverage	Botswana	2017	FSW	Behavioral And Biological Surveillance Survey Of HIV/STI Among Select High-Risk Sub- Populations In Botswana- 2017
HIV prevalence	Botswana	2012	FSW	2012 Mapping, Size Estimation & Behavioral Biological Surveillance Survey (BBSS) Of HIV/STI Among Select High-Risk Sub-Populations In Botswana.
HIV prevalence	Botswana	2017	FSW	2017 BBS
PSE	Botswana	2012	FSW	BBSS 2012
ART coverage	Botswana	2017	MSM	Behavioral And Biological Surveillance Survey Of HIV/STI Among Select High-Risk Sub- Populations In Botswana- 2017
HIV prevalence	Botswana	2012	MSM	2012 Mapping, Size Estimation & Behavioral And Biological Surveillance Survey (BBSS) Of HIV/STI Among Select High-Risk Sub-Populations In Botswana
HIV prevalence	Botswana	2017	MSM	2017 BBS
PSE	Botswana	2012	MSM	BBSS 2012
PSE	Botswana	2017	MSM	Mapping & Size Estimation Of Select Key Populations In Botswana (2017)
HIV prevalence	Botswana	2017	TG	2017 BBS
HIV prevalence	Burkina Faso	2010	FSW	Enqu,àöAte De Surveillance Comportementale aux Des Groupes A Haut Risque : Travailleuses Du Sexe (TS) Et Leurs Clients Au Burkina Faso
HIV prevalence	Burkina Faso	2017	FSW	Cartographie Programmatique , Estimation De La Taille Et Enquete Bio Comportementale Parmi Les Populations Cles (PS, HSH, UD) Au Burkina Faso Par Le Sp/Cnls IST

PSE	Burkina Faso	2017	FSW	Cartographie Programmatique, Estimation De La Taille Et Enquete Bio- Comportementale Parmi Les Populations Cles (PS, HSH, UD) Au Burkina Faso
HIV prevalence	Burkina Faso	2013	MSM	Poteat 2017
HIV prevalence	Burkina Faso	2016	MSM	Stahlman et al
HIV prevalence	Burkina Faso	2017	MSM	Cartographie Programmatique , Estimation De La Taille Et Enquete Bio Comportementale Parmi Les Populations Cles (PS, HSH, UD) Au Burkina Faso Par Le Sp/Cnls IST.
HIV prevalence	Burkina Faso	2017	PWID	Cartographie Programmatique , Estimation De La Taille Et Enquete Bio Comportementale Parmi Les Populations Cles (PS, HSH, UD) Au Burkina Faso Par Le Sp/Cnls IST.
PSE	Burkina Faso	2017	PWID	Cartographie Programmatique, Estimation De La Taille Et Enquete Bio- Comportementale Parmi Les Populations Cles (PS, HSH, UD) Au Burkina Faso
HIV prevalence	Burkina Faso	2013	TG	Poteat 2017
HIV prevalence	Burkina Faso	2016	TG	Stahlman et al
HIV prevalence	Burundi	2014	FSW	Burundi PLACE Report
HIV prevalence	Burundi	2021	FSW	2021 BBS
PSE	Burundi	2014	FSW	Burundi PLACE Report (October 2014)
PSE	Burundi	2021	FSW	2021 BBS
HIV prevalence	Burundi	2014	MSM	Burundi PLACE Report
HIV prevalence	Burundi	2021	MSM	2021 BBS
PSE	Burundi	2014	MSM	Burundi PLACE Report (October 2014)
PSE	Burundi	2021	MSM	2021 BBS
HIV prevalence	Burundi	2017	PWID	Platt et al.
HIV prevalence	Burundi	2021	PWID	2021 BBS
PSE	Burundi	2021	PWID	2021 BBS
ART coverage	Cameroon	2013	FSW	Antiretroviral Treatment Coverage For Men Who Have Sex With Men And Female Sex Workers Living With HIV In Cameroon
ART coverage	Cameroon	2013	FSW	HIV Prevention For Populations At Risk In Cameroon
ART coverage	Cameroon	2016	FSW	2016 BBS
HIV prevalence	Cameroon	2016	FSW	2016 Integrated Biological And Behavioral Survey (IBBS) Report Among Key Populations In Cameroon: Female Sex Workers And Men Who Have Sex With Men
PSE	Cameroon	2013	FSW	Holland Ce, 2015 10.1097/Qai.0000000000000443.

PSE	Cameroon	2016	FSW	Mapping And Size Estimation Of Female Sex Workers In Cameroon: To Inform HIV Program Design And Implementation
PSE	Cameroon	2018	FSW	Cartographie Programmatique Et Estimation De Taille Des Travailleuses De Sexe, Des Hommes Ayant Des Rapports Sexuels Avec Des Hommes, Des Usagers De Drogue, Et Des Adolescent(E)S Et Jeunes Vulneables Au VIH Au Cameroun
ART coverage	Cameroon	2013	MSM	Antiretroviral Treatment Coverage For Men Who Have Sex With Men And Female Sex Workers Living With HIV In Cameroon
ART coverage	Cameroon	2013	MSM	HIV Prevention For Populations At Risk In Cameroon
ART coverage	Cameroon	2016	MSM	2016 BBS
HIV prevalence	Cameroon	2011	MSM	Etude Integree De Surveillance Comportementale Et Biologique Chez Les Hommes Ayant Des Rapports Sexuels Avec Les Hommes Au Cameroun
HIV prevalence	Cameroon	2016	MSM	2016 Integrated Biological And Behavioral Survey (IBBS) Report Among Key Populations In Cameroon: Female Sex Workers And Men Who Have Sex With Men
PSE	Cameroon	2013	MSM	Holland Ce, 2015 10.1097/Qai.0000000000000443.
PSE	Cameroon	2018	MSM	Cartographie Programmatique Et Estimation De Taille Des Travailleuses De Sexe, Des Hommes Ayant Des Rapports Sexuels Avec Des Hommes, Les Usagers De Drogue Et Les Adolescent(E)S Et Jeunes Vuln,àdE-“(C)Rables Au VIH Au Cameroun
PSE	Cameroon	2018	PWID	Cartographie Programmatique Et Estimation De Taille Des Travailleuses De Sexe, Des Hommes Ayant Des Rapports Sexuels Avec Des Hommes, Les Usagers De Drogue Et Les Adolescent(E)S Et Jeunes Vuln,àdE-“(C)Rables Au VIH Au Cameroun
PSE	Central African Republic	2019	FSW	Enquete Sur La Cartographie, L'estimation De La Taille Des Professionnelles De Sexe Et Des Hommes Ayant Des Rapports Sexuels Avec D'autres Hommes a Bangui, Boali, Bouar, Carnot Et Berberati En Republique Centrafricaine En 2019
PSE	Central African Republic	2019	MSM	Enquete Sur La Cartographie, L'estimation De La Taille Des Professionnelles De Sexe Et Des Hommes Ayant Des Rapports Sexuels Avec D'autres Hommes a Bangui, Boali, Bouar, Carnot Et Berberati En Republique Centrafricaine En 2019
HIV prevalence	Congo - Brazzaville	2012	FSW	Enquete Comportementale Couplee A La Serologie VIH Chez Les Professionnelles Du Sexe, Les Hommes Ayant Des Rapports Sexuels Avec Les Hommes Et Les Detenus En Republique Du Congo
PSE	Congo - Brazzaville	2012	FSW	Enquete Comportementale Couplee A La Serologie VIH Chez Les Professionnelles Du Sexe, Les Hommes Ayant Des Rapports Sexuels Avec Les Hommes Et Les Detenus En Republique Du Congo Rapport Final
PSE	Congo - Brazzaville	2017	FSW	Rapport De La Cartographie Programmatique Et Estimation De La Taille Des Populations Cles Les Plus Exposees Aux Risques Du VIH/Sida

HIV prevalence	Congo - Brazzaville	2012	MSM	Enquete Comportementale Couplee A La Serologie VIH Chez Les Professionnelles Du Sexe, Les Hommes Ayant Des Rapports Sexuels Avec Les Hommes Et Les Detenus En Republique Du Congo
PSE	Congo - Brazzaville	2017	MSM	Rapport De La Cartographie Programmatique Et Estimation De La Taille Des Populations Cles Les Plus Exposees Aux Risques Du VIH/Sida
PSE	Congo - Brazzaville	2017	PWID	Rapport De La Cartographie Programmatique Et Estimation De La Taille Des Populations Cles Les Plus Exposees Aux Risques Du VIH/Sida
ART coverage	Congo - Kinshasa	2016	FSW	Rapport Annuel 2016
ART coverage	Congo - Kinshasa	2019	FSW	Enquete De Surveillance Bio-Comportementale Aupres Des Populations Cles A Risque De L'infection Par Le VIH Dans 14 Provinces, 2018-2019
HIV prevalence	Congo - Kinshasa	2012	FSW	BBS 2012
HIV prevalence	Congo - Kinshasa	2012	FSW	BBS 2012 Report, Page 154 And 155
HIV prevalence	Congo - Kinshasa	2016	FSW	Rapport Annuel Pssp 2016
HIV prevalence	Congo - Kinshasa	2019	FSW	Enquete De Surveillance Bio-Comportementale Aupres Des Populations Cles A Risque De L'infection Par Le VIH Dans 14 Provinces, 2018-2019
PSE	Congo - Kinshasa	2013	FSW	Rapport De L'enquete Sur L'estimation De La Taille Des Populations Cles Dans Six Provinces (Bas Congo, Katanga, Kinshasa, Orientale, Nord Et Sud Kivu) En Rdc
ART coverage	Congo - Kinshasa	2016	MSM	Rapport Annuel 2016
ART coverage	Congo - Kinshasa	2019	MSM	Enquete De Surveillance Bio-Comportementale Aupres Des Populations Cles A Risque De L'infection Par Le VIH Dans 14 Provinces, 2018-2019
HIV prevalence	Congo - Kinshasa	2011	MSM	Apport De Lienquete Sur Les Facteurs Explicatifs De La Seroprevalence Elevee De Liinfection A VIH/Sida Chez Les Hommes Ayant Des Rapports Sexuels Avec Les Hommes De Kinshasa
HIV prevalence	Congo - Kinshasa	2016	MSM	Rapport Annuel Pssp 2016
HIV prevalence	Congo - Kinshasa	2019	MSM	Enquete De Surveillance Bio-Comportementale Aupres Des Populations Cles A Risque De L'infection Par Le VIH Dans 14 Provinces, 2018-2019
PSE	Congo - Kinshasa	2013	MSM	Rapport De L'enquete Sur L'estimation De La Taille Des Populations Cles Dans Six Provinces (Bas Congo, Katanga, Kinshasa, Orientale, Nord Et Sud Kivu) En Rdc
ART coverage	Congo - Kinshasa	2016	PWID	Rapport Annuel 2016
ART coverage	Congo - Kinshasa	2019	PWID	Enquete De Surveillance Bio-Comportementale Aupres Des Populations Cles A Risque De L'infection Par Le VIH Dans 14 Provinces, 2018-2019

HIV prevalence	Congo - Kinshasa	2016	PWID	Rapport Annuel Pssp 2016
HIV prevalence	Congo - Kinshasa	2019	PWID	Enquete De Surveillance Bio-Comportementale Aupres Des Populations Cles A Risque De L'infection Par Le VIH Dans 14 Provinces, 2018-2019
PSE	Congo - Kinshasa	2013	PWID	Rapport De L'enquete Sur L'estimation De La Taille Des Populations Cles Dans Six Provinces (Bas Congo, Katanga, Kinshasa, Orientale, Nord Et Sud Kivu) En Rdc
ART coverage	Congo - Kinshasa	2016	TG	Rapport Annuel 2016
HIV prevalence	Congo - Kinshasa	2016	TG	Rapport Annuel Pssp 2016
ART coverage	Côte d'Ivoire	2020	FSW	Enquete Bio-Comportementale Et Cartographique En Direction Des Travailleuses De Sexe Dans Cinq Localites De La Cote D'ivoire : Katiola, Yamoussoukro, Soubre, Aboisso, Agboville.
HIV prevalence	Côte d'Ivoire	2020	FSW	Enqu,àö,ÑçTe Bio-Comportementale Et Cartographique En Direction Des Travailleuses De Sexe Dans Cinq Localit,àö(C)S De La C,àö-Te D,Aoivoire : Katiola, Yamoussoukro, Soubr,àö(C), Aboisso, Agboville.
PSE	Côte d'Ivoire	2020	FSW	2020 BBS
HIV prevalence	Côte d'Ivoire	2012	MSM	,àöEtude Sur Le VIH Et Les Facteurs De Risques Associ,àöAs Chez Les Hommes Ayant Des Rapports Sexuels Avec Des Hommes A Abidjan, C,àölte D,Aoivoire
HIV prevalence	Côte d'Ivoire	2014	MSM	Bouscaillou et al.
HIV prevalence	Côte d'Ivoire	2015	MSM	Etude Biologique Et Comportementale Des IST, Du VIH Et Du Sida Chez Les Hommes Ayant Des Rapports Sexuels Avec Des Hommes Des Villes D,Aoabidjan, Agboville, Bouakeaa, Gagnoa, Et Yamoussoukro
HIV prevalence	Côte d'Ivoire	2016	MSM	Poteat 2017
HIV prevalence	Côte d'Ivoire	2019	MSM	Enqueacte Bio Comportementale Du VIH Et De La Syphilis Chez Les Hommes Ayant Des Rapports Sexuels Avec D,Aoautres Hommes (HSH) Dans Les Villes De Divo, Daloa, Abengourou, Bouafleaa Et Korhogo
PSE	Côte d'Ivoire	2012	MSM	Eaatude Sur Le VIH Et Les Facteurs De Risques Associeaas Chez Les Hommes Ayant Des Rapports Sexuels Avec Des Hommes A Abidjan, Coacte D,Aoivoire
PSE	Côte d'Ivoire	2014	MSM	Etude Biologique Et Comportementale Des IST, Du VIH Et Du Sida Chez Les Hommes Ayant Des Rapports Sexuels Avec Des Hommes Des Villes D,àö-ç,C-®N-çAbidjan, Agboville, Bouak,àöE-“(C), Gagnoa, Et Yamoussoukro
PSE	Côte d'Ivoire	2018	MSM	Survey Of HIV And Associated Risk Factors Among Men Who Have Sex With Men In San Pedro, C,àölte D'ivoire
PSE	Côte d'Ivoire	2020	MSM	2020 BBS
HIV prevalence	Côte d'Ivoire	2014	PWID	Sant,àö(C) Des Personnes Usag,àö(R)Res De Drogue ,àö,Ä† Abidjan En C,àö-Te D,Aoivoire

HIV prevalence	Côte d'Ivoire	2019	PWID	Enquete Bio-Comportementale Chez Les Usagers De Drogues Y Compris Les Usagers De Drogues Injectables A Abidjan
PSE	Côte d'Ivoire	2020	PWID	2020 BBS
HIV prevalence	Côte d'Ivoire	2016	TG	Poteat 2017
HIV prevalence	Côte d'Ivoire	2019	TG	Rapport De L, Ao, à Atude Pour L, Aoidentification Des Besoins Sp, à Acifiques En Mati, à Are De Pr, à Avention Et Prise En Charge IST-VIH/Sida Chez Les Personnes Transgenres A Abidjan , Ai Cote D, Aoivoire
PSE	Côte d'Ivoire	2020	TG	2020 BBS
HIV prevalence	Equatorial Guinea	2021	FSW	Informe De La Encuesta Nacional Sobre Realidades Lgbiti, Trabajadores De Sexo Y Encarcelados En Las Ciudades De Malabo, Bata, Ebibeyon Y Mongo.
HIV prevalence	Equatorial Guinea	2021	MSM	Informe De La Encuesta Nacional Sobre Realidades Lgbiti, Trabajadores De Sexo Y Encarcelados En Las Ciudades De Malabo, Bata, Ebibeyon Y Mongo.
ART coverage	Eswatini	2020	FSW	2020 BBS
HIV prevalence	Eswatini	2014	FSW	PLACE 2015
HIV prevalence	Eswatini	2020	FSW	IBBS 2020
PSE	Eswatini	2015	FSW	Characterizing The HIV Prevention And Treatment Needs Among Key Populations, Including Men Who Have Sex With Men And Female Sex Workers In Swaziland: From Evidence To Action
PSE	Eswatini	2020	FSW	IBBSS 2020
ART coverage	Eswatini	2020	MSM	2020 BBS
HIV prevalence	Eswatini	2011	MSM	Poteat 2017
HIV prevalence	Eswatini	2014	MSM	PLACE 2015
HIV prevalence	Eswatini	2020	MSM	IBBS 2020
PSE	Eswatini	2015	MSM	Characterizing The HIV Prevention And Treatment Needs Among Key Populations, Including Men Who Have Sex With Men And Female Sex Workers In Swaziland: From Evidence To Action
PSE	Eswatini	2020	MSM	IBBSS 2020
ART coverage	Eswatini	2020	TG	2020 BBS
HIV prevalence	Eswatini	2011	TG	Poteat 2017
HIV prevalence	Eswatini	2020	TG	IBBS 2020
HIV prevalence	Ethiopia	2013	FSW	Ethiopian National Key Population HIV Bio-Behavioral Surveillance Round I, 2013 Report
HIV prevalence	Ethiopia	2020	FSW	Size Estimation, HIV And Other Stis Prevalence Among Female Sex Workers In Ethiopia: National HIV And Other Stis Bio-Behavioral Survey (Nhsbs)

PSE	Ethiopia	2013	FSW	Ethiopian National Key Population HIV Bio-Behavioral Surveillance Round I, 2013 Report
PSE	Ethiopia	2020	FSW	Size Estimation, HIV And Other Stis Prevalence Among Female Sex Workers In Ethiopia: National HIV And Other Stis Bio-Behavioral Survey (Nhsbs)
HIV prevalence	Ethiopia	2015	PWID	Demissie et al
HIV prevalence	Ethiopia	2019	PWID	Population Estimation And Harm Reduction Among People Who Inject Drugs In Addis Ababa, Ethiopia
PSE	Ethiopia	2019	PWID	Population Estimation And Harm Reduction Among People Who Inject Drugs In Addis Ababa, Ethiopia
ART coverage	Gambia	2017	FSW	2017 IBBS
HIV prevalence	Gambia	2011	FSW	Peitzmeier 2013
HIV prevalence	Gambia	2017	FSW	2017 FSW And MSM BBS
PSE	Gambia	2018	FSW	IBSS 2018 Data Collection
ART coverage	Gambia	2017	MSM	2017 IBBS
HIV prevalence	Gambia	2011	MSM	Mason 2013
HIV prevalence	Gambia	2011	MSM	Poteat 2017
HIV prevalence	Gambia	2017	MSM	2017 FSW And MSM BBS
PSE	Gambia	2018	MSM	IBSS 2018 Data Collection
HIV prevalence	Gambia	2011	TG	Poteat 2017
HIV prevalence	Ghana	2015	FSW	2015 FSW BBS
HIV prevalence	Ghana	2019	FSW	Population Size Estimates And Integrated Biological And Behavioral Survey Among Female Sex Workers And Their Intimate Partners In Ghana
PSE	Ghana	2011	FSW	2011 Mapping And Population Size Estimation Of Fsws In Ghana
PSE	Ghana	2011	FSW	IBBS 2011
PSE	Ghana	2015	FSW	2015 Mapping And Population Size Estimation Of Female Sex Workers In Ghana
PSE	Ghana	2020	FSW	National And Subnational Size Estimation Of Female Sex Workers In Ghana 2020: Comparing 3-Source Capture-Recapture With Other Approaches
HIV prevalence	Ghana	2011	MSM	2011 Men's Study
HIV prevalence	Ghana	2017	MSM	2017 Ghana Men's Study
PSE	Ghana	2011	MSM	The Ghana Men's Study
PSE	Ghana	2017	MSM	Ghana Men's Study

HIV prevalence	Ghana	2018	PWID	Messersmith et al.
HIV prevalence	Guinea	2017	FSW	Etude De Surveillance Comportementale Et Biologique (Escomb) Sur Les IST, Le VIH/Sida Et La Syphilis Aupres Des Populations Cles Et Groupes Vulnerables
PSE	Guinea	2011	FSW	Estimation De La Taille Des Professionnelles Du Sexe (PS) Dans La Ville De Conakry
PSE	Guinea	2013	FSW	Etude Sur L',Ao,àN,àö-•Estimation De La Taille Des Professionnelles De Sexe (PS) a L'interieur Du Pays - Republique De Guinee, 2013
PSE	Guinea	2017	FSW	Rapport_etude_nationale_estimation_taille_ps_hsh_guineaae-2017
HIV prevalence	Guinea	2017	MSM	Etude De Surveillance Comportementale Et Biologique Sur Le VIH Aupres Des Hommes Ayant Des Relations Sexuelles Avec Des Hommes (HSH) En Guinee
PSE	Guinea	2011	MSM	Estimation De La Taille Des Hommes Ayant Des Rapports Sexuels Avec Des Hommes (HSH) Dans La Ville De Conakry
PSE	Guinea	2013	MSM	Etude D',Ao,àN,àö-•Estimation De La Taille Des Hommes Ayant Des Rapports Sexuels Avec Les Hommes (HSH) a L'interieur Du Pays-Republique De Guinee, 2013
PSE	Guinea	2017	MSM	Rapport_etude_nationale_estimation_taille_ps_hsh_guineaae-2017
HIV prevalence	Guinea-Bissau	2015	FSW	Rapport D'activite National
HIV prevalence	Guinea-Bissau	2017	FSW	2017 IBBS
HIV prevalence	Guinea-Bissau	2017	FSW	2018 IBBS
HIV prevalence	Guinea-Bissau	2010	MSM	Estudo Explorat"Rio De Homens Que Fazem Sexo Com Homens Na Guine-Bissau
HIV prevalence	Guinea-Bissau	2015	MSM	Rapport D'activite National
HIV prevalence	Guinea-Bissau	2017	MSM	Estudo Biolo_gico E Socio Comportamental E Estimativa Do Tamanho Nas Populacoes Mais Expostas Ao Risco De Infecao Pelo VIH Na Republica Da Guine-Bissau
PSE	Guinea-Bissau	2017	MSM	Estudo Biologico E S,àö,â•Cio Comportamental E Estimativa Do Tamanho Nas Populates Mais Expostas Ao Risco De Infe,àöSs,àö-£O Pelo VIH Na Rep,àö,à´ Blica Da Guin,àö(C)-Bissau
ART coverage	Haiti	2016	FSW	2017 PLACE
ART coverage	Haiti	2016	MSM	2017 PLACE
ART coverage	Haiti	2016	TG	2017 PLACE
ART coverage	Kenya	2015	FSW	Polling Booth Survey 2016
ART coverage	Kenya	2017	FSW	Polling Booth Survey 2017
HIV prevalence	Kenya	2010	FSW	2010 IBBS

HIV prevalence	Kenya	2011	FSW	2010-2011 Integrated Biological And Behavioural Surveillance Survey Among Key Populations In Nairobi And Kisumu, Kenya
HIV prevalence	Kenya	2011	FSW	Baral 2012
PSE	Kenya	2012	FSW	Estimating The Size Iof The Female Sex Worker Population In Kenya To Inform HIV Prevention Programming
PSE	Kenya	2012	FSW	Geographic Mapping Of Most At Risk Populations For HIV (MARPS) In Kenya
PSE	Kenya	2013	FSW	Kenya Most At Risk Populations Size Estimate Consensus Report
PSE	Kenya	2020	FSW	National Key Population Size Estimates In Kenya
ART coverage	Kenya	2015	MSM	Polling Booth Survey 2016
ART coverage	Kenya	2016	MSM	Hptn 075
ART coverage	Kenya	2017	MSM	Polling Booth Survey 2017
ART coverage	Kenya	2017	MSM	Smith et al
HIV prevalence	Kenya	2010	MSM	2010-2011 Integrated Biological And Behavioural Surveillance Survey Among Key Populations In Nairobi And Kisumu, Kenya
HIV prevalence	Kenya	2011	MSM	Integrated Biological And Behavior Survey In Nairobi - 2010
HIV prevalence	Kenya	2016	MSM	Hptn 075
HIV prevalence	Kenya	2017	MSM	Smith et al
PSE	Kenya	2012	MSM	Geographic Mapping Of Most At Risk Populations For HIV (MARPS) In Kenya
PSE	Kenya	2018	MSM	Key Population Mapping And Size Estimation In Selected Counties In Kenya: Phase 1
PSE	Kenya	2020	MSM	National Key Population Size Estimates In Kenya
ART coverage	Kenya	2015	PWID	Polling Booth Survey 2016
ART coverage	Kenya	2017	PWID	Polling Booth Survey 2017
HIV prevalence	Kenya	2010	PWID	Singh I Degenhardt et al, 2017
HIV prevalence	Kenya	2011	PWID	2010-2011 Integrated Biological And Behavioural Surveillance Survey Among Key Populations In Nairobi And Kisumu, Kenya
HIV prevalence	Kenya	2012	PWID	Kurth I Degenhardt et al, 2017
HIV prevalence	Kenya	2013	PWID	Internationalaidssoc I Degenhardt et al, 2017
HIV prevalence	Kenya	2013	PWID	Mwatelah I Degenhardt et al, 2017
HIV prevalence	Kenya	2013	PWID	Webale I Degenhardt et al, 2017
HIV prevalence	Kenya	2014	PWID	Syvertsen et al 2015
HIV prevalence	Kenya	2018	PWID	Oguya et al 2021

PSE	Kenya	2012	PWID	Geographic Mapping Of Most At Risk Populations For HIV (MARPS) In Kenya
PSE	Kenya	2013	PWID	Kenya Most At Risk Populations Size Estimate Consensus Report
PSE	Kenya	2018	PWID	Key Population Mapping And Size Estimation In Selected Counties In Kenya: Phase 1
PSE	Kenya	2020	PWID	National Key Population Size Estimates In Kenya
ART coverage	Kenya	2016	TG	Hptn 075
ART coverage	Kenya	2017	TG	Smith et al
HIV prevalence	Kenya	2016	TG	Hptn 075
HIV prevalence	Kenya	2017	TG	Smith et al
PSE	Kenya	2018	TG	Key Population Mapping And Size Estimation In Selected Counties In Kenya: Phase 1
HIV prevalence	Lesotho	2014	FSW	Characterizing HIV Prevention, Treatment And Care Needs Among,Ä†Men Who Have Sex With Men And Female Sex Workers In Lesotho
HIV prevalence	Lesotho	2014	FSW	Lesotho Stakeholder Prelim
HIV prevalence	Lesotho	2019	FSW	IBBS2 Report
PSE	Lesotho	2014	FSW	Characterizing HIV Prevention, Treatment And Care Needs Among Men Who Have Sex With Men And Female Sex Workers In Lesotho
HIV prevalence	Lesotho	2014	MSM	Characterizing HIV Prevention, Treatment And Care Needs Among,Ä†Men Who Have Sex With Men And Female Sex Workers In Lesotho
HIV prevalence	Lesotho	2014	MSM	Lesotho Stakeholder Prelim
HIV prevalence	Lesotho	2014	MSM	Poteat 2017
HIV prevalence	Lesotho	2019	MSM	IBBS2 Report
PSE	Lesotho	2014	MSM	Characterizing HIV Prevention, Treatment And Care Needs Among Men Who Have Sex With Men And Female Sex Workers In Lesotho
HIV prevalence	Lesotho	2014	TG	Poteat 2017
ART coverage	Malawi	2017	FSW	2017 PLACE
ART coverage	Malawi	2020	FSW	2019/20 BBS
HIV prevalence	Malawi	2013	FSW	2013 Malawi Biological And Behavioural Surveillance Study
HIV prevalence	Malawi	2018	FSW	PLACE
HIV prevalence	Malawi	2020	FSW	Malawi Biological And Behavioural Surveillance Survey

PSE	Malawi	2011	FSW	Counting The Uncatchables: Report Of The Situation Analysis Of The Magnitude, Behavioural Patterns, Contributing Factors, Current Interventions And Impact Of Sex Work In HIV Prevention In Malawi
PSE	Malawi	2014	FSW	Malawi Biological And Behavioural Surveillance Survey, Size Estimation Report
PSE	Malawi	2018	FSW	Malawi 2018 PLACE Report
PSE	Malawi	2019	FSW	2019-2020 BBS
ART coverage	Malawi	2014	MSM	2014 HIV Prevalence And Sociobehavioral Characteristics Among Men Who Have Sex With Men Across Seven Sites In Malawi
ART coverage	Malawi	2014	MSM	2014 HIV Prevalence And Sociobehavioral Characteristics Among Men Who Have Sex With Men In Blantyre, Lilongwe, And Mzuzu, Malawi
ART coverage	Malawi	2016	MSM	Hptn 075
ART coverage	Malawi	2017	MSM	2017 PLACE
ART coverage	Malawi	2020	MSM	2019/20 BBS
HIV prevalence	Malawi	2012	MSM	HIV And Syphilis Prevalence Estimates Among Men Who Have Sex With Men In Blantyre, Chikwawa, Lilongwe, Mangochi, Mulanje, Mzuzu, And Nkhata Bay Malawi
HIV prevalence	Malawi	2012	MSM	Poteat 2017
HIV prevalence	Malawi	2013	MSM	HIV And Syphilis Prevalence Estimates Among Men Who Have Sex With Men In Blantyre, Chikwawa, Lilongwe, Mangochi, Mulanje, Mzuzu, And Nkhata Bay Malawi
HIV prevalence	Malawi	2014	MSM	Geographical Disparities In HIV Prevalence And Care Among Men Who Have Sex With Men In Malawi
HIV prevalence	Malawi	2014	MSM	HIV And Syphilis Prevalence Estimates Among Men Who Have Sex With Men In Blantyre, Chikwawa, Lilongwe, Mangochi, Mulanje, Mzuzu, And Nkhata Bay Malawi
HIV prevalence	Malawi	2016	MSM	Hptn 075
HIV prevalence	Malawi	2018	MSM	PLACE
HIV prevalence	Malawi	2020	MSM	Malawi Biological And Behavioural Surveillance Survey
PSE	Malawi	2018	MSM	Malawi 2018 PLACE Report
PSE	Malawi	2019	MSM	2019-2020 BBS
ART coverage	Malawi	2016	TG	Hptn 075
HIV prevalence	Malawi	2012	TG	Poteat 2017
HIV prevalence	Malawi	2016	TG	Hptn 075
HIV prevalence	Malawi	2020	TG	Malawi Biological And Behavioural Surveillance Survey

HIV prevalence	Malawi	2021	TG	HIV Risk, Access To Health Services And Population Size Estimate Of Transgender Community In Malawi
PSE	Malawi	2021	TG	HIV Risk, Access To Health Services And Population Size Estimate Of Transgender Community In Malawi
HIV prevalence	Mali	2018	FSW	Toukara 2020
HIV prevalence	Mali	2019	FSW	Etude Bio-Comportementale IST, VIH Et Tuberculose Chez Les Femmes Travailleuses Du Sexe Et Les Routiers Au Mali 2017-2019
PSE	Mali	2015	FSW	Cartographie Des Zones D'intervention Et Estimation De La Taille Des TS Et HSH, 2015
PSE	Mali	2019	FSW	Cartographie Et Estimation De La Taille Des Professionnelles De Sexe (PS) Et Des Hommes Ayant Des Rapports Sexuels Avec D'autres Hommes (HSH) Coupl,àö(C)Es ,àö,Ä† L',àö(C)Tude Bio-Comportementale Chez Les HSH En Mati,àö(R)Re De VIH Au Mali
ART coverage	Mali	2015	MSM	Hakim 2018
ART coverage	Mali	2019	MSM	Cartographie Et Estimation De La Taille Des Professionnelles De Sexe (PS) Et Des Hommes Ayant Des Rapports Sexuels Avec D'autres Hommes (HSH) Couplees A L'etude Bio-Comportementale Chez Les HSH En Matiere De VIH Au Mali
HIV prevalence	Mali	2015	MSM	Hakim 2018
HIV prevalence	Mali	2015	MSM	Rapport ,àöAtude Bio-Comportementale Sur Les Hommes Qui Ont Des Rapports Sexuels Avec D'autres Hommes ,àö,Ä† Bamako, Mali, 2014-15
HIV prevalence	Mali	2019	MSM	Cartographie Et Estimation De La Taille Des Professionnelles De Sexe (PS) Et Des Hommes Ayant Des Rapports Sexuels Avec Diautres Hommes (HSH) Couplees ,Ä° Lietude Bio-Comportementale Chez Les HSH En Matiere De VIH Au Mali
PSE	Mali	2015	MSM	Cartographie Des Zones D'intervention Et Estimation De La Taille Des TS Et HSH, 2015
PSE	Mali	2019	MSM	Cartographie Et Estimation De La Taille Des Professionnelles De Sexe (PS) Et Des Hommes Ayant Des Rapports Sexuels Avec D'autres Hommes (HSH) Coupl,àö(C)Es ,àö,Ä† L',àö(C)Tude Bio-Comportementale Chez Les HSH En Mati,àö(R)Re De VIH Au Mali
PSE	Mali	2017	PWID	Estimation Scientifique De La Taille Et Cartographie Des Utilisateurs De Drogues Par Injection En Relation Avec L'infection Par Le VIH Au Mali
ART coverage	Mali	2015	TG	Hakim 2018
ART coverage	Mali	2019	TG	Analyse De La Situation Des Personnes Transgenres Au Mali En Relation Avec L'infection A VIH Et Le Sida
HIV prevalence	Mali	2015	TG	Hakim 2018

HIV prevalence	Mali	2019	TG	Analyse De La Situation Des Personnes Transgenres Au Mali En Relation Avec L'infection A VIH Et Le Sida
PSE	Mali	2019	TG	Analyse De La Situation Des Personnes Transgenres Au Mali En Relation Avec Infection A VIH Et Le Sida
ART coverage	Mozambique	2012	FSW	The Integrated Biological And Behavioral Survey Among Female Sex Workers, Mozambique 2011-2012
ART coverage	Mozambique	2017	FSW	2017 PLACE
HIV prevalence	Mozambique	2012	FSW	IBBS Report 2011/12
HIV prevalence	Mozambique	2017	FSW	2017 PLACE
HIV prevalence	Mozambique	2021	FSW	Inquerito Biologico E Comportamental Em Mulheres Trabalhadoras De Sexo, Segunda Ronda, Mocambique, 2019-2020
PSE	Mozambique	2012	FSW	The Integrated Biological And Behavioral Survey Among Female Sex Workers, Mozambique 2011,Ai2012
PSE	Mozambique	2017	FSW	Mapeamento Programatico E Prevalencia De HIV Entre Populates Chave Em 5 Provincias De Mo,àöSsambique: Estudo PLACE 2017
PSE	Mozambique	2021	FSW	Inquerito Biologico E Comportamental Em Mulheres Trabalhadoras De Sexo, Segunda Ronda, Mo,àöSsambique, 2019-2020
ART coverage	Mozambique	2017	MSM	2017 PLACE
HIV prevalence	Mozambique	2011	MSM	IBBS Report 2011
HIV prevalence	Mozambique	2017	MSM	2017 PLACE
HIV prevalence	Mozambique	2021	MSM	Inquerito Biologico E Comportamental Entre Homens Que Fazem Sexo Com Homens, Segunda Ronda, Mocambique, 2020-2021
PSE	Mozambique	2011	MSM	The Integrated Biological And Behavioral Survey Among Men Who Have Sex With Men, Mozambique
PSE	Mozambique	2017	MSM	Mapeamento Programatico E Prevalencia De HIV Entre Populates Chave Em 5 Provincias De Mo,àöSsambique: Estudo PLACE 2017
PSE	Mozambique	2021	MSM	Inquerito Biologico E Comportamental Entre Homens Que Fazem Sexo Com Homens, Segunda Ronda, Mo,àöSsambique, 2020-2021
ART coverage	Mozambique	2016	PWID	2014 BBS
HIV prevalence	Mozambique	2014	PWID	2014 BBS
PSE	Mozambique	2014	PWID	The Integrated Biological And Behavioral Survey Among People Who Inject Drugs, Mozambique
ART coverage	Mozambique	2017	TG	2017 PLACE
HIV prevalence	Mozambique	2017	TG	2017 PLACE

PSE	Mozambique	2017	TG	Mapeamento Programatico E Prevalencia De HIV Entre Populates Chave Em 5 Provincias De Mo,ãoSambique: Estudo PLACE 2017
ART coverage	Namibia	2014	FSW	Integrated Biological And Behavioral Surveillance Studies Among Female Sex Workers In Namibia
HIV prevalence	Namibia	2013	FSW	IBBS Report 2015
HIV prevalence	Namibia	2019	FSW	2019 BBS
PSE	Namibia	2013	FSW	Integrated Biological And Behavioral Surveillance Studies Among Female Sex Workers In Namibia
PSE	Namibia	2014	FSW	Integrated Biological And Behavioral Surveillance Studies Among Female Sex Workers In Namibia
PSE	Namibia	2019	FSW	2019 BBS
ART coverage	Namibia	2013	MSM	Integrated Biological And Behavioral Surveillance Studies Among Men Who Have Sex With Men In Namibia (2014)
HIV prevalence	Namibia	2012	MSM	IBBS Report 2014
HIV prevalence	Namibia	2013	MSM	IBBS Report 2014
PSE	Namibia	2013	MSM	Namibia Men',Ao,ãoN,ão-'S Health Study: Integrated Biological And Behavioral Surveillance Studies Among Men Who Have Sex With Men In Namibia
PSE	Namibia	2019	MSM	2019 BBS
ART coverage	Nigeria	2020	FSW	2020 BBS
HIV prevalence	Nigeria	2010	FSW	HIV Integrated Biological And Behavioural Surveillance Survey (IBBSS) 2010
HIV prevalence	Nigeria	2014	FSW	Integrated Biological And Behavioural Surveillance Survey (IBBSS)
HIV prevalence	Nigeria	2020	FSW	Integrated Biological & Behavioural Surveillance Survey (IBBSS) Among Key Populations In Nigeria
PSE	Nigeria	2015	FSW	Mapping And Characterisation Of Key Populations, 2015
PSE	Nigeria	2015	FSW	Reported By The Country Through The Garpr Process
PSE	Nigeria	2019	FSW	2019 Nigeria Mapping
PSE	Nigeria	2019	FSW	Mapping And Size Estimation Of Key Populations Nigeria
ART coverage	Nigeria	2020	MSM	2020 BBS
HIV prevalence	Nigeria	2010	MSM	HIV Integrated Biological And Behavioural Surveillance Survey (IBBSS) 2010
HIV prevalence	Nigeria	2010	MSM	Vu 2013
HIV prevalence	Nigeria	2014	MSM	Integrated Biological And Behavioural Surveillance Survey (IBBSS)
HIV prevalence	Nigeria	2016	MSM	Crowell et al

HIV prevalence	Nigeria	2016	MSM	Leevan et al In Press
HIV prevalence	Nigeria	2020	MSM	Integrated Biological & Behavioural Surveillance Survey (IBBSS) Among Key Populations In Nigeria
PSE	Nigeria	2015	MSM	Mapping And Characterisation Of Key Populations, 2015
PSE	Nigeria	2019	MSM	2019 Nigeria Mapping
PSE	Nigeria	2019	MSM	Mapping And Size Estimation Of Key Populations Nigeria
ART coverage	Nigeria	2020	PWID	2020 BBS
HIV prevalence	Nigeria	2010	PWID	HIV Integrated Biological And Behavioural Surveillance Survey (IBBSS) 2010
HIV prevalence	Nigeria	2014	PWID	Integrated Biological And Behavioural Surveillance Survey (IBBSS)
HIV prevalence	Nigeria	2020	PWID	Integrated Biological & Behavioural Surveillance Survey (IBBSS) Among Key Populations In Nigeria
PSE	Nigeria	2015	PWID	Mapping And Characterisation Of Key Populations, 2015
PSE	Nigeria	2019	PWID	2019 Nigeria Mapping
PSE	Nigeria	2019	PWID	Mapping And Size Estimation Of Key Populations Nigeria
ART coverage	Nigeria	2020	TG	2020 BBS
HIV prevalence	Nigeria	2016	TG	Leevan et al In Press
HIV prevalence	Nigeria	2020	TG	Integrated Biological & Behavioural Surveillance Survey (IBBSS) Among Key Populations In Nigeria
ART coverage	Rwanda	2015	FSW	Biological & Behavioral Surveillance Among Female Sexual Workers In Rwanda In 2015
HIV prevalence	Rwanda	2010	FSW	BBSS (2010)
HIV prevalence	Rwanda	2015	FSW	Biological & Behavioral Surveillance Among Female Sexual Workers In Rwanda In 2015
PSE	Rwanda	2010	FSW	Mutagoma M, et al. Int J Std&AIDS 2015, Vol 26 (11) 810-814
PSE	Rwanda	2018	FSW	Female Sex Workers Population Size Estimation, Rwanda 2018
ART coverage	Rwanda	2018	MSM	Behavioral And Biological Assessment And Population Size Estimation For Men Who Have Sex With Men (MSM) In Kigali, Rwanda, 2018
HIV prevalence	Rwanda	2018	MSM	HIV Infection And Engagement In HIV Care Cascade Among Men Who Have Sex With Men And Transgender Women In Kigali, Rwanda: A Cross-Sectional Study
PSE	Rwanda	2018	MSM	Behavioral And Biological Assessment And Population Size Estimation For Men Who Have Sex With Men (MSM) In Kigali, Rwanda, 2018
PSE	Rwanda	2018	MSM	Behavioral And Biological Assessment And Population Size Estimation For Men Who Have Sex With Men (MSM) In Kigali, Rwanda, 2019
PSE	Rwanda	2018	MSM	Behavioral And Biological Assessment And Population Size Estimation For Men Who Have Sex With Men (MSM) In Kigali, Rwanda, 2020

PSE	Rwanda	2018	MSM	Behavioral And Biological Assessment And Population Size Estimation For Men Who Have Sex With Men (MSM) In Kigali, Rwanda, 2021
HIV prevalence	Rwanda	2020	PWID	Twahirwa Rwema et al; Injection Drug Use Practices And HIV Infection Among People Who Inject Drugs In Kigali, Rwanda: A Cross-Sectional Study
HIV prevalence	Rwanda	2018	TG	HIV Infection And Engagement In HIV Care Cascade Among Men Who Have Sex With Men And Transgender Women In Kigali, Rwanda: A Cross-Sectional Study
ART coverage	Senegal	2017	FSW	Achieving An AIDS-Free Generation In Senegal
ART coverage	Senegal	2019	FSW	Enquete Nationale De Surveillance Combinee Des IST Et Du VIH/Sida (Ensc 2019)
HIV prevalence	Senegal	2015	FSW	Enque_te Nationale De Surveillance Combinee Des IST Et Du VIH/Sida (Ensc 2015)
HIV prevalence	Senegal	2017	FSW	Achieving An AIDS-Free Generation In Senegal
HIV prevalence	Senegal	2019	FSW	Enque_te Nationale De Surveillance Combinee Des IST Et Du VIH/Sida (Ensc 2019)
PSE	Senegal	2017	FSW	Achieving An AIDS-Free Generation In Senegal
ART coverage	Senegal	2017	MSM	Achieving An AIDS-Free Generation In Senegal
HIV prevalence	Senegal	2014	MSM	Rapport Enquete Combinee Chez Les Hommes Ayant Des Rapports Sexuels Avec Des Hommes (HSH) Au Senegal (2014)
HIV prevalence	Senegal	2015	MSM	Poteat 2017
HIV prevalence	Senegal	2017	MSM	Achieving An AIDS-Free Generation In Senegal
HIV prevalence	Senegal	2017	MSM	Enquete Combinee Chez Les Hommes Ayant Des Rapports Sexuels Avec Des Hommes (HSH) Au Senegal
PSE	Senegal	2017	MSM	Achieving An AIDS-Free Generation In Senegal
HIV prevalence	Senegal	2011	PWID	Enquete De Prevalence Et De Pratiques A Risques D'infection A VIH, Vhb, Et Vhc Chez Les Usagers De Drogues Dans La Region De Dakar (Senegal).
HIV prevalence	Senegal	2019	PWID	Rapport D'estimation De La Taille Et D'enquete Bio Comportementale Chez Les Consommateurs De Drogue Injectables Au Senegal
PSE	Senegal	2015	PWID	Lepretre 2015
PSE	Senegal	2020	PWID	Rapport D'estimation De La Taille Et D'enquete Bio Comportementale Chez Les Consommateurs De Drogue Injectables Au Senegal The
HIV prevalence	Senegal	2015	TG	Poteat 2017
HIV prevalence	Sierra Leone	2021	FSW	Bio-Behavioural Survey Field Implementation 2021
PSE	Sierra Leone	2021	FSW	Bio-Behavioural Survey Field Implementation 2021
HIV prevalence	Sierra Leone	2015	MSM	HIV Sero - Prevalence Study For Key Populations, May 2015

HIV prevalence	Sierra Leone	2021	MSM	Bio-Behavioural Survey Field Implementation 2021
PSE	Sierra Leone	2021	MSM	Bio-Behavioural Survey Field Implementation 2021
HIV prevalence	Sierra Leone	2015	PWID	HIV Sero - Prevalence Study For Key Populations May 2015
HIV prevalence	Sierra Leone	2021	PWID	Bio-Behavioural Survey Field Implementation 2021
PSE	Sierra Leone	2021	PWID	Bio-Behavioural Survey Field Implementation 2021
HIV prevalence	Sierra Leone	2015	TG	HIV Sero - Prevalence Study For Key Populations May 2015
HIV prevalence	Sierra Leone	2021	TG	Bio-Behavioural Survey Field Implementation 2021
PSE	Sierra Leone	2021	TG	Bio-Behavioural Survey Field Implementation 2021
ART coverage	South Africa	2018	FSW	Sahms li
ART coverage	South Africa	2019	FSW	Samhms 2019
HIV prevalence	South Africa	2015	FSW	Engagement In The HIV Care Cascade And Predictors Of Uptake Of Antiretroviral Therapy Among Female Sex Workers In Port Elizabeth, South Africa
HIV prevalence	South Africa	2015	FSW	Ucsf (2015): South Africa Health Monitoring Study (Sahms)
HIV prevalence	South Africa	2018	FSW	Sahms li
PSE	South Africa	2014	FSW	Ucsf (2015): South Africa Health Monitoring Study (Sahms)
PSE	South Africa	2018	FSW	Sahms li
ART coverage	South Africa	2016	MSM	Hptn 075
HIV prevalence	South Africa	2012	MSM	Lane et al (2014)
HIV prevalence	South Africa	2012	MSM	Marang Men's Study (2014)
HIV prevalence	South Africa	2016	MSM	Hptn 075
HIV prevalence	South Africa	2016	MSM	Sullivan et al
HIV prevalence	South Africa	2017	MSM	Fearon et al
HIV prevalence	South Africa	2017	MSM	Jobson et al
HIV prevalence	South Africa	2019	MSM	Samhms li
ART coverage	South Africa	2017	PWID	Tipval 2017
HIV prevalence	South Africa	2013	PWID	Scheibe et al (2016)
HIV prevalence	South Africa	2017	PWID	Scheibe et al (2019)
HIV prevalence	South Africa	2017	PWID	Scheibe et al. Understanding Hepatitis B, Hepatitis C And HIV Among People Who Inject Drugs In South Africa: Findings From A Three-City Cross-Sectional Survey

HIV prevalence	South Africa	2017	PWID	Tipval 2017 BBS
PSE	South Africa	2017	PWID	Tipval 2017 BBS
ART coverage	South Africa	2016	TG	Hptn 075
ART coverage	South Africa	2019	TG	Cloete et al 2021
HIV prevalence	South Africa	2016	TG	Hptn 075
HIV prevalence	South Africa	2016	TG	Sullivan et al
HIV prevalence	South Africa	2017	TG	Fearon et al
HIV prevalence	South Africa	2017	TG	Jobson et al
ART coverage	South Sudan	2016	FSW	A Bio-Behavioral HIV Survey Of Female Sex Workers In South Sudan
ART coverage	South Sudan	2017	FSW	A Bio-Behavioral HIV Survey Of Female Sex Workers In Nimule South Sudan
ART coverage	South Sudan	2019	FSW	Bio-Behaviour Survey Among Female Sex Workers In Wau, South Sudan Eagle 11 Survey, 2019
ART coverage	South Sudan	2019	FSW	Bio-Behaviour Survey Among Female Sex Workers In Yambio, South Sudan Eagle 11 Survey, 2019
HIV prevalence	South Sudan	2016	FSW	Eagle Juba Report, 2016
HIV prevalence	South Sudan	2019	FSW	Bio-Behaviour Survey Among Female Sex Workers In Wau, South Sudan Eagle 11 Survey, 2019
HIV prevalence	South Sudan	2019	FSW	Bio-Behaviour Survey Among Female Sex Workers In Yambio, South Sudan Eagle 11 Survey, 2019
PSE	South Sudan	2016	FSW	Okiria 2019
PSE	South Sudan	2019	FSW	Bio-Behaviour Survey Among Female Sex Workers In Wau, South Sudan Eagle 11 Survey, 2019
PSE	South Sudan	2019	FSW	Bio-Behaviour Survey Among Female Sex Workers In Yambio, South Sudan Eagle 11 Survey, 2019
ART coverage	Tanzania	2019	FSW	Integrated Behavioural And Biological Surveillance Survey Among Key Populations In Zanzibar, 2018-2021
HIV prevalence	Tanzania	2011	FSW	Integrated Behavioral And Biological Surveillance Survey Among Key Populations At Risk In Zanzibar, 2011-2012
HIV prevalence	Tanzania	2013	FSW	HIV And STI Biological And Behavioral Survey, 2013
HIV prevalence	Tanzania	2017	FSW	Integrated Bio-Behavioral Surveillance Survey Among Female Sex Workers In Dar-Es-Salaam, 2017
HIV prevalence	Tanzania	2018	FSW	Integrated Behavioral And Biological Surveillance Survey Among Key Populations In Zanzibar, 2018-2019

PSE	Tanzania	2010	FSW	HIV Behavioral And Biological Surveillance Survey Among Female Sex Workers In Dar Es Salaam, 2010
PSE	Tanzania	2013	FSW	HIV And STI Biological And Behavioral Survey, 2013
PSE	Tanzania	2017	FSW	Integrated Bio-Behavioral Surveillance Survey Among Female Sex Workers In Dar Es Salaam, 2017
PSE	Tanzania	2019	FSW	Integrated Behavioural And Biological Surveillance Survey Among Key Populations In Zanzibar, 2018-2019
ART coverage	Tanzania	2019	MSM	Integrated Behavioural And Biological Surveillance Survey Among Key Populations In Zanzibar, 2018-2020
HIV prevalence	Tanzania	2011	MSM	Integrated Behavioral And Biological Surveillance Survey Among Key Populations At Risk In Zanzibar, 2011-2012
HIV prevalence	Tanzania	2012	MSM	Prevalence Of The Human Immunodeficiency Virus, Other Sexually Transmitted Infections, And Health-Related Perceptions, Reflections, Experiences And Practices Among Men Having Sex With Men In Dar-Es-Salaam
HIV prevalence	Tanzania	2013	MSM	Ross et al
HIV prevalence	Tanzania	2014	MSM	Mmbaga Ej, Moen K, Makyao N, et al. HIV And STI S Among Men Who Have Sex With Men In Dodoma Municipality, Tanzania: A Cross-Sectional Study. Sex Transm Infect 2017;93:314-319.
HIV prevalence	Tanzania	2017	MSM	Integrated Bio-Behavioral Surveillance Survey Among Men Who Have Sex With Men In Dar-Es-Salaam, 2017
HIV prevalence	Tanzania	2018	MSM	Integrated Behavioral And Biological Surveillance Survey Among Key Populations In Zanzibar, 2018-2019
PSE	Tanzania	2011	MSM	Integrated Behavioral And Biological Surveillance Survey Among Key Populations At Risk In Zanzibar, 2011-2012
PSE	Tanzania	2012	MSM	Prevalence Of The Human Immunodeficiency Virus, Other Sexually Transmitted Infections, And Health-Related Perceptions, Reflections, Experiences And Practices Among Men Having Sex With Men In Dar Es Salaam
PSE	Tanzania	2017	MSM	Integrated Bio-Behavioral Surveillance Survey Among Female Sex Workers In Dar Es Salaam, 2017
PSE	Tanzania	2019	MSM	Integrated Behavioural And Biological Surveillance Survey Among Key Populations In Zanzibar, 2018-2019
ART coverage	Tanzania	2016	PWID	The Hepatitis C Cascade Of Care In People Who Inject Drugs In Dar Es Salaam, Tanzania
ART coverage	Tanzania	2019	PWID	Integrated Behavioural And Biological Surveillance Survey Among Key Populations In Zanzibar, 2018-2019
HIV prevalence	Tanzania	2010	PWID	Atkinson Degenhardt et al., 2017
HIV prevalence	Tanzania	2011	PWID	Bowring Degenhardt et al., 2017

HIV prevalence	Tanzania	2011	PWID	Gupta Degenhardt et al., 2017
HIV prevalence	Tanzania	2011	PWID	Integrated Behavioral And Biological Surveillance Survey Among Key Populations At Risk In Zanzibar, 2011-2012
HIV prevalence	Tanzania	2013	PWID	Integrated Bio-Behavioral Survey Among People Who Inject Drugs In Dar-Es-Salaam
HIV prevalence	Tanzania	2013	PWID	Lambdin Degenhardt et al., 2017
HIV prevalence	Tanzania	2016	PWID	Mohamed et al.
HIV prevalence	Tanzania	2017	PWID	Integrated Bio-Behavioral Surveillance Survey Among Men Who Have Sex With Men In Dar-Es-Salaam, 2017
HIV prevalence	Tanzania	2017	PWID	Kawambwa et al., 2020
HIV prevalence	Tanzania	2017	PWID	Leyna et al.
HIV prevalence	Tanzania	2018	PWID	Integrated Behavioral And Biological Surveillance Survey Among Key Populations In Zanzibar, 2018-2019
PSE	Tanzania	2011	PWID	Integrated Behavioral And Biological Surveillance Survey Among Key Populations At Risk In Zanzibar, 2011-2012
PSE	Tanzania	2014	PWID	Integrated Bio-Behavioral Survey Among People Who Inject Drugs In Dar Es Salaam
PSE	Tanzania	2014	PWID	Mapping Of People Who Use Drugs And People Who Inject Drugs In Selected Regions Of Tanzania
PSE	Tanzania	2017	PWID	Integrated Bio-Behavioral Surveillance Survey Among Female Sex Workers In Dar Es Salaam, 2017
PSE	Tanzania	2019	PWID	Integrated Behavioural And Biological Surveillance Survey Among Key Populations In Zanzibar, 2018-2019
HIV prevalence	Togo	2011	FSW	Enquete Comportementale Et De Seroprevalence Du VIH Chez Les Professionnels De Sexe Et Leurs Clients Au Togo En 2011
HIV prevalence	Togo	2014	FSW	Examining Risk Factors For HIV And Access To Services Among Female Sex Workers And Men Who Have Sex With Men In Togo
HIV prevalence	Togo	2015	FSW	2015 Rapport_etude Ssg_ps Et Clients Au Togo_2015_30_09_ok(1).Pdf
HIV prevalence	Togo	2015	FSW	,àAtude De Ssg Chez Les PS En 2015
HIV prevalence	Togo	2017	FSW	Enque_te Sero-Comportementale De Deuxieme Generation Chez Les Professionnelles Du Sexe Et Leurs Clients Au Togo En 2017 O-En
HIV prevalence	Togo	2011	MSM	2011 Togo 2011 Report On Behavioural Study And HIV Prevalence Among MSM.pdf
HIV prevalence	Togo	2013	MSM	Poteat 2017

HIV prevalence	Togo	2013	MSM	Stahlman et al
HIV prevalence	Togo	2013	MSM	Stahlman et al. 2016
HIV prevalence	Togo	2014	MSM	Examining Risk Factors For HIV And Access To Services Among Female Sex Workers And Men Who Have Sex With Men In Togo
HIV prevalence	Togo	2015	MSM	2015 Rapport_etude Ssg Hsh_13 Juin 2015_30_09_0k(1).Pdf
HIV prevalence	Togo	2017	MSM	Enquete Sero-Comportementale De Deuxieme Generation Chez Les Hommes Ayant Des Rapports Sexuels Avec D'autres Hommes Au Togo En 2017
HIV prevalence	Togo	2011	PWID	Enquete Comportementale Et De Seroprevalence Du VIH Chez Les Utilisateurs De Drogues Au Togo En 2011
HIV prevalence	Togo	2017	PWID	Enque_te Sero-Comportementale De Deuxieme Generation Chez Les Usagers De Drogues Au Togo En 2017 011-
HIV prevalence	Togo	2013	TG	Poteat 2017
HIV prevalence	Togo	2013	TG	Stahlman et al
HIV prevalence	Togo	2013	TG	Stahlman et al. 2016
ART coverage	Uganda	2012	FSW	Doshi 2018
ART coverage	Uganda	2021	FSW	Crane lii
HIV prevalence	Uganda	2012	FSW	Doshi 2018
HIV prevalence	Uganda	2013	FSW	2014 PLACE
HIV prevalence	Uganda	2021	FSW	Crane lii
PSE	Uganda	2017	FSW	Crane Survey Report: Population Size Estimation Among Female Sex Workers, People Who Inject Drugs, Men Who Have Sex With Men In 12 Locations, Uganda
PSE	Uganda	2018	FSW	Consultant Report: Size Estimation Of Key Populations In Uganda (January 10, 2018)
PSE	Uganda	2020	FSW	Estimating The Size Of Key Populations In Kampala, Uganda: 3-Source Capture-Recapture Study
PSE	Uganda	2021	FSW	Crane lii
HIV prevalence	Uganda	2013	MSM	Hladik 2017
PSE	Uganda	2017	MSM	Crane Survey Report: Population Size Estimation Among Female Sex Workers, People Who Inject Drugs, Men Who Have Sex With Men In 12 Locations, Uganda
PSE	Uganda	2018	MSM	Consultant Report: Size Estimation Of Key Populations In Uganda (January 10, 2018)

PSE	Uganda	2020	MSM	Estimating The Size Of Key Populations In Kampala, Uganda: 3-Source Capture-Recapture Study
HIV prevalence	Uganda	2019	PWID	Platt et al.
PSE	Uganda	2017	PWID	Crane Survey Report: Population Size Estimation Among Female Sex Workers, People Who Inject Drugs, Men Who Have Sex With Men In 12 Locations, Uganda
PSE	Uganda	2018	PWID	Consultant Report: Size Estimation Of Key Populations In Uganda (January 10, 2018)
PSE	Uganda	2020	PWID	Estimating The Size Of Key Populations In Kampala, Uganda: 3-Source Capture-Recapture Study
HIV prevalence	Uganda	2012	TG	Crane Survey Data
ART coverage	Zambia	2017	FSW	2016-2017 Integrated Biological And Behavioural Survey Among Female Sex Workers In Zambia
HIV prevalence	Zambia	2015	FSW	Integrated Biological And Behavioural Surveillance Survey Among Female Sex Workers In Zambia
HIV prevalence	Zambia	2017	FSW	2017 IBBS
PSE	Zambia	2015	FSW	Mapping And Size Estimates Of Female Sex Workers Populations In The Ten Corridors Of Hope Iii Project Districts In Zambia
PSE	Zambia	2017	FSW	2016-17 Integrated Biological And Behavioral Survey Among Female Sex Workers In Zambia
PSE	Zambia	2021	MSM	2021 BBS
ART coverage	Zimbabwe	2013	FSW	Cowan 2018
ART coverage	Zimbabwe	2016	FSW	Cowan 2018
HIV prevalence	Zimbabwe	2011	FSW	Cowan 2013
HIV prevalence	Zimbabwe	2013	FSW	Chabata 2019
HIV prevalence	Zimbabwe	2013	FSW	Cowan 2017
HIV prevalence	Zimbabwe	2013	FSW	Cowan 2018
HIV prevalence	Zimbabwe	2015	FSW	Ndori-Mharadze 2018
HIV prevalence	Zimbabwe	2016	FSW	Chabata 2019
HIV prevalence	Zimbabwe	2016	FSW	Cowan 2018
HIV prevalence	Zimbabwe	2017	FSW	Hensen 2019
PSE	Zimbabwe	2015	FSW	Fearon et al.
PSE	Zimbabwe	2016	FSW	Fearon et al.

PSE	Zimbabwe	2017	FSW	Fearon et al.
ART coverage	Zimbabwe	2019	MSM	IBBS 2019
HIV prevalence	Zimbabwe	2019	MSM	IBBS 2019
PSE	Zimbabwe	2019	MSM	IBBS 2019
ART coverage	Zimbabwe	2019	TG	IBBS 2019
HIV prevalence	Zimbabwe	2019	TG	IBBS 2019
PSE	Zimbabwe	2019	TG	IBBS 2019

4

Region	Country	Population size				HIV prevalence				ART coverage			
		FSW	MSM	PWID	TGW	FSW	MSM	PWID	TGW	FSW	MSM	PWID	TGW
ESA	Angola	2017	2017		2017	2017	2017			2017	2017		2017
ESA	Botswana	2012	2017			2017	2017		2017	2017	2017		
ESA	Burundi	2021	2021	2021		2021	2021	2021					
ESA	Eswatini	2020	2020			2020	2020		2020	2020	2020		2020
ESA	Ethiopia	2020		2019		2020		2019					
ESA	Kenya	2020	2020	2020	2018	2011	2017	2018	2017	2017	2017	2017	2017
ESA	Lesotho	2014	2014			2019	2019		2014				
ESA	Malawi	2019	2019		2021	2020	2020		2021	2020	2020		2016
ESA	Mozambique	2021	2021	2014	2017	2021	2021	2014	2017	2017	2017	2016	2017
ESA	Namibia	2019	2019			2019	2013			2014	2013		
ESA	Rwanda	2018	2018			2015	2018	2020	2018	2015	2018		
ESA	South Africa	2018		2017		2018	2019	2017	2017	2019	2016	2017	2019
ESA	South Sudan	2019				2019				2019			
ESA	Tanzania	2019	2019	2019		2018	2018	2018		2019	2019	2019	
ESA	Uganda	2021	2020	2020		2021	2013	2019	2012	2021			
ESA	Zambia	2017	2021			2017				2017			
ESA	Zimbabwe	2017	2019		2019	2017	2019		2019	2016	2019		2019
WCA	Benin				2020	2017	2017	2017	2020				
WCA	Burkina Faso	2017				2017	2017	2017	2016				
WCA	Cameroon	2018	2018	2018		2016	2016			2016	2016		
WCA	Cent. Af. Rep	2019	2019										
WCA	Chad												
WCA	Congo	2017	2017	2017		2012	2012						
WCA	Dem. Rep. Congo	2013	2013	2013		2019	2019	2019	2016	2019	2019	2019	2016
WCA	Côte d'Ivoire	2020	2020	2020	2020	2020	2019	2019	2019	2020			
WCA	Eq. Guinea					2021	2021						
WCA	Gabon												
WCA	Gambia	2018	2018			2017	2017		2011	2017	2017		
WCA	Ghana	2020	2017			2019	2017	2018					
WCA	Guinea	2017	2017			2017	2017						
WCA	Guinea-Bissau		2017			2017	2017						
WCA	Liberia												
WCA	Mali	2019	2019	2017	2019	2019	2019		2019		2019		2019
WCA	Niger												
WCA	Nigeria	2019	2019	2019		2020	2020	2020	2020	2020	2020	2020	2020
WCA	Senegal	2017	2017	2020		2019	2017	2019	2015	2019	2017		
WCA	Sierra Leone	2021	2021	2021	2021	2021	2021	2021	2021				
WCA	Togo					2017	2017	2017	2013				

7

8 **Supplementary Table S4: National availability of population size, HIV prevalence, and ART**
9 **coverage data by key population.** Cells are coloured by year with most recent in green, and oldest
0 in red.

KP	Parameter	Log odds ratio (95%CI)
FSW	Intercept	0.246 (-0.231, 0.709)
	Logit total population prevalence	0.342 (0.187, 0.496)
	Region: ESA	0 (Reference)
	WCA	-1.28 (-2.064, -0.506)
	Method: Laboratory confirmed	0 (Reference)
	Self-report	-0.259 (-0.789, 0.286)
	Logit total population prevalence x Region	-0.144 (-0.344, 0.056)
PWID	Intercept	0.84 (-0.228, 1.97)
	Logit total population prevalence	0.981 (0.596, 1.382)
	Region: ESA	0 (Reference)
	WCA	-2.632 (-4.26, -1.063)
	Method: Laboratory confirmed	0 (Reference)
	Self-report	1.675 (0.797, 2.595)
	Logit total population prevalence x Region	-0.703 (-1.165, -0.254)
MSM-TGW	Intercept	-0.844 (-1.54, -0.168)
	Logit total population prevalence	0.357 (0.116, 0.602)
	Region: ESA	0 (Reference)
	WCA	-0.375 (-1.396, 0.658)
	Method: Laboratory confirmed	0 (Reference)
	Self-report	0.403 (-0.269, 1.066)
	Population: MSM	0 (Reference)
	TGW	0.283 (0.065, 0.499)
	Logit total population prevalence x Region	-0.217 (-0.508, 0.072)

1

2 **Supplementary Table S5: HIV prevalence model regression results.** FSW and PWID were
3 modelled separately, and MSM-TGW were modelled together.

KP	Parameter	Without study method fixed effect	With study method fixed effect
		Log odds ratio (95%CI)	Log odds ratio (95%CI)
FSW	Intercept	-0.01 (-0.325, 0.299)	-0.329 (-0.774, 0.106)
	Logit total population ART coverage	0.61 (0.402, 0.829)	0.616 (0.414, 0.825)
	Method: Laboratory confirmed		0 (Reference)
	Self-report		0.522 (0.003, 1.051)
MSM	Intercept	-0.444 (-0.801, -0.085)	-0.968 (-1.568, -0.378)
	Logit total population ART coverage	0.658 (0.319, 1.002)	0.699 (0.361, 1.041)
	Method: Laboratory confirmed		0 (Reference)
	Self-report		0.768 (0.067, 1.479)
PWID	Intercept	-0.366 (-1.008, 0.254)	-0.702 (-1.81, 0.386)
	Logit total population ART coverage	0.544 (0.203, 0.893)	0.22 (-0.441, 0.888)
	Method: Laboratory confirmed		0 (Reference)
	Self-report		0.797 (-0.457, 2.021)

4

5 **Supplementary Table S6: ART coverage model regression results.**

6 **Supplementary Table S7: Country-specific urban KPSE proportions (%)**

Region	Country	KPSE proportion (%) (95%CI)		
		FSW	MSM	PWID
ESA	Angola	1.6 (0.7, 3.7)	0.7 (0.3, 1.9)	0.1 (0, 0.9)
	Botswana	1.8 (0.6, 5.3)	0.7 (0.3, 2)	0.1 (0, 1.0)
	Burundi	2.5 (0.9, 6.6)	1.0 (0.3, 3.5)	0.3 (0.1, 1.0)
	Eswatini	2.7 (0.7, 10.9)	1.1 (0.3, 4.2)	0.1 (0, 1.5)
	Ethiopia	0.7 (0.4, 1.5)	0.2 (0, 3.8)	0.1 (0, 0.9)
	Kenya	0.8 (0.4, 1.7)	0.2 (0.1, 0.5)	0.1 (0.1, 0.3)
	Lesotho	0.5 (0.1, 2.6)	0.6 (0.1, 3.7)	0.1 (0, 3.9)
	Malawi	2.8 (1.5, 4.9)	1.2 (0.5, 2.9)	0.2 (0, 1.3)
	Mozambique	1.5 (0.8, 2.8)	1.1 (0.5, 2.3)	0.2 (0.1, 0.6)
	Namibia	1.9 (0.8, 4.1)	1.2 (0.5, 3.2)	0.1 (0, 0.9)
	Rwanda	1.1 (0.3, 3.7)	1.0 (0.4, 2.5)	0.2 (0, 1.5)
	South Africa	0.7 (0.3, 1.6)	0.9 (0.2, 3.0)	0.1 (0, 0.4)
	South Sudan	3.7 (1.3, 10.7)	0.6 (0.1, 6.0)	0.2 (0, 2.7)
	Tanzania	1.2 (0.6, 2.4)	0.8 (0.4, 1.7)	0.2 (0.1, 0.4)
	Uganda	1.3 (0.7, 2.6)	1.0 (0.5, 2.0)	0.4 (0.1, 1.1)
	Zambia	1.8 (0.9, 3.3)	0.9 (0.4, 2.2)	0.1 (0, 0.7)
Zimbabwe	1.3 (0.6, 2.7)	0.7 (0.3, 1.7)	0.1 (0, 0.7)	
	Region total	1.4 (0.3, 5.8)	0.8 (0.1, 3.0)	0.2 (0.0, 1.2)
WCA	Benin	1.2 (0.3, 6.3)	0.6 (0.1, 3.1)	0.3 (0, 2.7)
	Burkina Faso	1.3 (0.6, 3.6)	0.5 (0.1, 2.2)	0.3 (0, 2.0)
	Cameroon	1.5 (0.7, 3.1)	0.6 (0.2, 1.5)	0.1 (0, 0.5)
	Central African Republic	2.3 (0.8, 6.7)	0.6 (0.2, 1.9)	0.2 (0, 1.0)
	Chad	1.6 (0.3, 7.5)	0.6 (0.1, 2.4)	0.2 (0, 1.5)
	Congo	3.5 (1.4, 8.3)	0.5 (0.2, 1.5)	0.1 (0, 0.5)
	Democratic Republic of Congo	2.2 (0.9, 5.8)	0.9 (0.3, 2.4)	0.1 (0, 0.4)
	Côte d'Ivoire	0.8 (0.4, 2.0)	0.3 (0.1, 0.7)	0.2 (0, 0.8)
	Equatorial Guinea	1.6 (0.2, 13.2)	0.6 (0.1, 6.3)	0.1 (0, 1.7)
	Gabon	2 (0.3, 12.6)	0.5 (0.1, 3.7)	0.1 (0, 1.2)
	Gambia	0.7 (0.1, 5.7)	0.4 (0, 4.0)	0.1 (0, 2.0)
	Ghana	0.3 (0.2, 0.5)	0.6 (0.2, 1.5)	0.2 (0, 2.7)
	Guinea	0.8 (0.4, 1.8)	0.2 (0.1, 0.4)	0.2 (0, 0.9)

	Guinea-Bissau	0.8 (0.1, 6.6)	0.6 (0.1, 3.4)	0.1 (0, 1.5)
	Liberia	1.0 (0.2, 6.1)	0.4 (0.1, 2.0)	0.2 (0, 2.0)
	Mali	2.0 (0.9, 4.8)	0.8 (0.3, 1.7)	0.3 (0.1, 1.4)
	Niger	1.6 (0.4, 6.4)	0.6 (0.1, 2.5)	0.3 (0.1, 2.0)
	Nigeria	1.4 (0.7, 3.0)	0.5 (0.2, 1.1)	0.5 (0.2, 1.2)
	Senegal	0.8 (0.2, 3.0)	0.3 (0.1, 1.2)	0.1 (0, 0.3)
	Sierra Leone	1.6 (0.4, 5.7)	1.0 (0.3, 3.2)	0.4 (0.1, 1.5)
	Togo	0.8 (0.1, 5.2)	0.5 (0.1, 3.7)	0.3 (0, 2.9)
	Region total	1.3 (0.2, 6.4)	0.5 (0.1, 2.5)	0.0 (0.2, 1.6)
SSA	Sub-Saharan Africa total	1.4 (0.2, 6.1)	0.7 (0.1, 2.7)	0.2 (0.0, 1.4)

7

8

9 **Supplementary Table S8: Country-specific KP HIV prevalence estimates**

Region	Country	HIV prevalence (%) (95%CI)			
		FSW	MSM	PWID	TGW
ESA	Angola	12 (7, 19)	4 (2, 9)	6 (3, 13)	10 (5, 20)
	Burundi	23 (13, 36)	3 (1, 6)	7 (3, 16)	10 (4, 22)
	Botswana	50 (40, 61)	43 (30, 58)	16 (9, 27)	24 (14, 38)
	Ethiopia	19 (14, 26)	2 (1, 6)	7 (2, 21)	11 (3, 29)
	Kenya	31 (20, 43)	11 (6, 17)	13 (7, 20)	20 (12, 29)
	Lesotho	54 (43, 64)	42 (29, 56)	28 (20, 37)	38 (28, 49)
	Mozambique	25 (20, 32)	28 (20, 38)	11 (7, 17)	17 (10, 26)
	Malawi	49 (40, 59)	19 (13, 28)	14 (9, 19)	21 (15, 29)
	Namibia	33 (24, 44)	28 (19, 38)	15 (8, 27)	23 (12, 39)
	Rwanda	42 (32, 51)	6 (3, 11)	8 (3, 17)	13 (6, 24)
	South Sudan	21 (13, 32)	6 (3, 12)	9 (3, 25)	14 (5, 35)
	Eswatini	52 (40, 63)	53 (36, 69)	14 (9, 21)	23 (15, 34)
	Tanzania	32 (20, 46)	12 (7, 19)	11 (4, 29)	17 (6, 40)
	Uganda	16 (10, 25)	14 (9, 20)	12 (5, 22)	18 (8, 31)
	South Africa	59 (48, 69)	42 (29, 56)	31 (23, 40)	44 (33, 55)
	Zambia	53 (44, 61)	26 (18, 36)	15 (5, 35)	23 (9, 47)
Zimbabwe	52 (44, 58)	28 (19, 38)	16 (9, 25)	23 (14, 35)	
	<i>Region total</i>	<i>37 (11, 62)</i>	<i>13 (4, 34)</i>	<i>19 (2, 56)</i>	<i>20 (6, 47)</i>
WCA	Benin	16 (12, 20)	4 (3, 7)	12 (8, 18)	17 (11, 24)
	Burkina Faso	11 (8, 15)	4 (2, 6)	5 (3, 9)	7 (4, 12)
	Central African Republic	16 (6, 38)	6 (3, 9)	15 (5, 33)	19 (8, 41)
	Cote d'Ivoire	9 (5, 16)	5 (3, 8)	13 (9, 18)	18 (13, 25)
	Cameroon	21 (13, 30)	6 (3, 9)	17 (9, 27)	23 (13, 35)
	Congo - Kinshasa	7 (6, 10)	4 (2, 6)	12 (7, 20)	15 (9, 25)
	Congo - Brazzaville	11 (6, 18)	6 (4, 10)	19 (10, 34)	26 (14, 45)
	Gabon	17 (6, 37)	6 (4, 9)	14 (5, 33)	20 (8, 46)
	Ghana	8 (6, 12)	5 (3, 7)	13 (8, 20)	17 (10, 27)
	Guinea	13 (8, 20)	4 (3, 7)	13 (6, 25)	17 (8, 31)
	Gambia	16 (9, 24)	5 (3, 8)	16 (10, 26)	22 (13, 34)
	Guinea-Bissau	19 (11, 30)	6 (4, 9)	11 (5, 20)	15 (7, 27)
	Equatorial Guinea	54 (34, 72)	7 (4, 13)	29 (15, 53)	37 (19, 63)

	Liberia	13 (5, 33)	5 (3, 7)	13 (5, 32)	18 (6, 39)
	Mali	12 (4, 32)	4 (3, 7)	12 (6, 23)	17 (8, 29)
	Niger	9 (3, 27)	3 (2, 5)	11 (4, 26)	14 (6, 34)
	Nigeria	17 (13, 21)	5 (3, 7)	21 (15, 29)	28 (20, 38)
	Senegal	8 (5, 11)	3 (2, 5)	19 (12, 28)	24 (16, 35)
	Sierra Leone	12 (7, 19)	5 (3, 7)	7 (3, 13)	10 (5, 17)
	Chad	12 (4, 35)	4 (3, 7)	13 (5, 29)	17 (7, 36)
	Togo	13 (10, 17)	4 (3, 7)	10 (7, 14)	11 (7, 17)
	<i>Region total</i>	<i>13 (5, 53)</i>	<i>13 (5, 32)</i>	<i>5 (2, 9)</i>	<i>18 (6, 41)</i>
SSA	Sub-Saharan Africa total	18 (6, 60)	13 (4, 33)	6 (2, 51)	19 (6, 45)

0

1

2 **Supplementary Table S9: Country-specific KP ART coverage estimates among age 15-49 years**
 3 **in 2021**

Region	Country	ART coverage (95%CI)		
		FSW	MSM	PWID
ESA	Angola	48 (39, 56)	25 (16, 36)	33 (19, 51)
	Burundi	89 (79, 95)	64 (50, 76)	80 (58, 92)
	Botswana	84 (74, 91)	59 (47, 71)	66 (48, 81)
	Ethiopia	70 (62, 77)	63 (49, 75)	60 (44, 75)
	Kenya	79 (70, 86)	59 (47, 70)	65 (47, 80)
	Lesotho	75 (66, 83)	56 (45, 67)	61 (44, 76)
	Mozambique	66 (58, 72)	47 (38, 57)	52 (36, 67)
	Malawi	77 (68, 84)	65 (50, 77)	66 (48, 81)
	Namibia	80 (70, 87)	64 (50, 76)	67 (48, 82)
	Rwanda	85 (75, 92)	76 (59, 88)	76 (55, 89)
	South Sudan	39 (30, 50)	22 (14, 34)	27 (14, 46)
	Eswatini	89 (79, 95)	80 (62, 91)	85 (63, 96)
	Tanzania	78 (69, 85)	56 (45, 68)	63 (45, 78)
	Uganda	85 (75, 92)	68 (53, 81)	74 (54, 88)
	South Africa	67 (59, 74)	46 (37, 55)	52 (36, 67)
	Zambia	73 (64, 80)	62 (48, 74)	61 (44, 76)
Zimbabwe	85 (75, 92)	76 (59, 89)	76 (55, 89)	
	<i>Region total</i>	<i>71 (46, 92)</i>	<i>52 (19, 82)</i>	<i>58 (28, 84)</i>
WCA	Benin	74 (65, 82)	44 (36, 54)	57 (40, 72)
	Burkina Faso	89 (79, 95)	47 (38, 57)	62 (45, 77)
	Central African Republic	61 (53, 67)	37 (29, 46)	45 (30, 61)
	Cote d'Ivoire	72 (63, 79)	46 (37, 56)	56 (40, 71)
	Cameroon	70 (62, 77)	53 (43, 64)	58 (41, 72)
	Congo - Kinshasa	66 (58, 73)	89 (70, 97)	61 (44, 76)
	Congo - Brazzaville	39 (30, 50)	23 (14, 35)	28 (15, 47)
	Gabon	55 (48, 62)	43 (35, 52)	43 (28, 58)
	Ghana	63 (56, 70)	38 (30, 47)	48 (33, 63)
	Guinea	55 (48, 62)	37 (29, 46)	42 (28, 57)
	Gambia	47 (39, 55)	20 (11, 32)	31 (17, 49)
	Guinea-Bissau	66 (58, 72)	33 (25, 43)	47 (32, 62)

	Equatorial Guinea	55 (48, 62)	21 (13, 33)	35 (21, 52)
	Liberia	61 (54, 68)	31 (23, 41)	44 (29, 59)
	Mali	59 (52, 66)	35 (28, 45)	44 (29, 59)
	Niger	71 (62, 78)	45 (36, 54)	53 (38, 68)
	Nigeria	89 (79, 95)	55 (45, 67)	69 (49, 83)
	Senegal	84 (74, 91)	46 (38, 56)	61 (44, 75)
	Sierra Leone	61 (54, 68)	30 (22, 40)	43 (28, 58)
	Chad	69 (60, 76)	49 (40, 59)	55 (39, 69)
	Togo	72 (63, 79)	45 (36, 54)	55 (40, 70)
	<i>Region total</i>	<i>76 (39, 93)</i>	<i>69 (18, 96)</i>	<i>65 (25, 92)</i>
SSA	Sub-Saharan Africa total	73 (42, 93)	59 (18, 94)	61 (28, 90)

4

5

6 **Supplementary Table S10: MSM age group denominator sensitivity analysis.** HIV prevalence in
7 MSM presented at 1 and 15% total population HIV prevalence in Eastern and Southern Africa (ESA)
8 and at 1 and 7% total population HIV prevalence in Western and Central Africa (WCA). ART
9 coverage in MSM presented at 40, 75, and 80% total population ART coverage in sub-Saharan Africa
0 (SSA). KP estimates using ages 15-49 as matched total population age group for HIV prevalence and
1 ART coverage are as in primary analysis.

Region	Total population estimate (%)	KP estimate (95%CI)	
		15 to 49	15 to 29
HIV prevalence			
ESA	1	8 (3-22)	10 (4-25)
	15	20 (8-41)	21 (8-43)
WCA	1	14 (6-31)	14 (5-31)
	7	18 (7-38)	14 (5-32)
ART coverage			
SSA	40	33 (25-43)	37 (29-45)
SSA	75	57 (46-68)	62 (50-73)
SSA	80	62 (49-73)	67 (53-78)

2

3