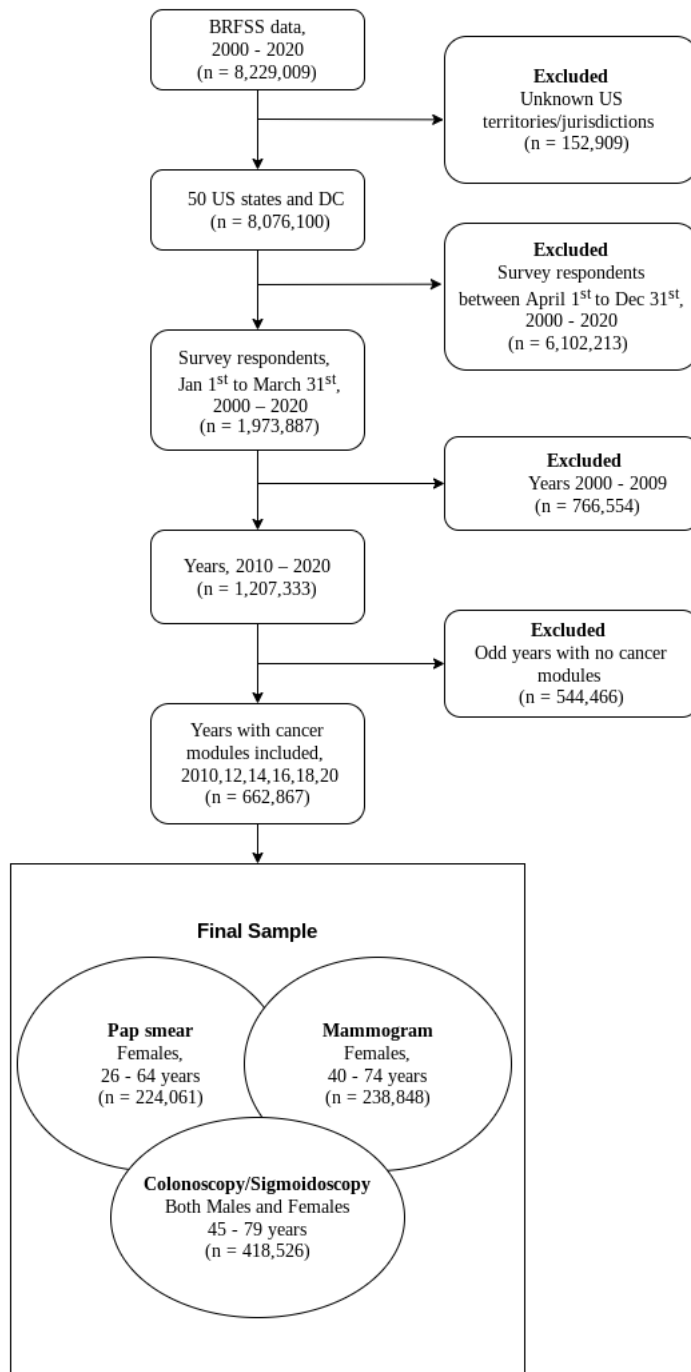


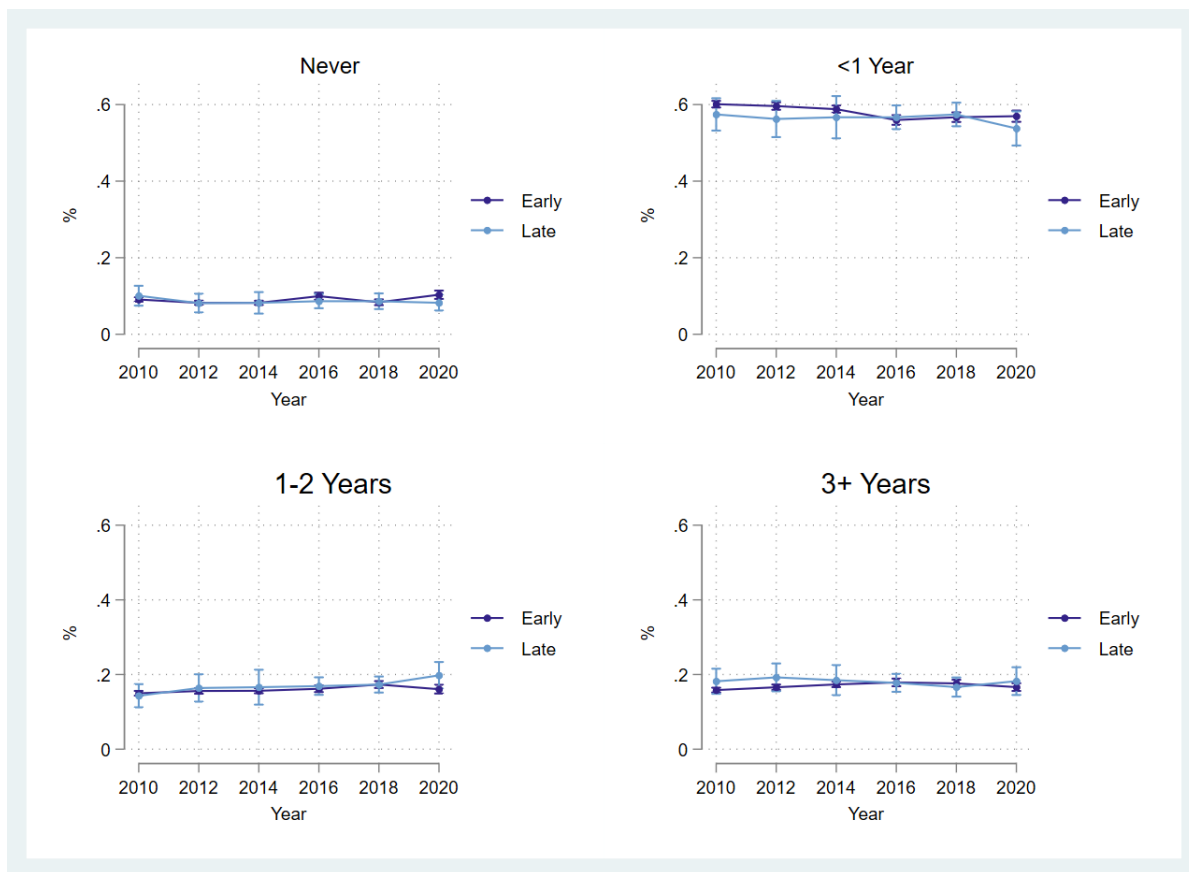
7 Supplemental Files

The 2020 U.S. cancer screening deficit and the timing of adults' most recent screen: A population-based quasi-experiment

7.1 Supplemental Figure 1: Sample Selection Flow Chart

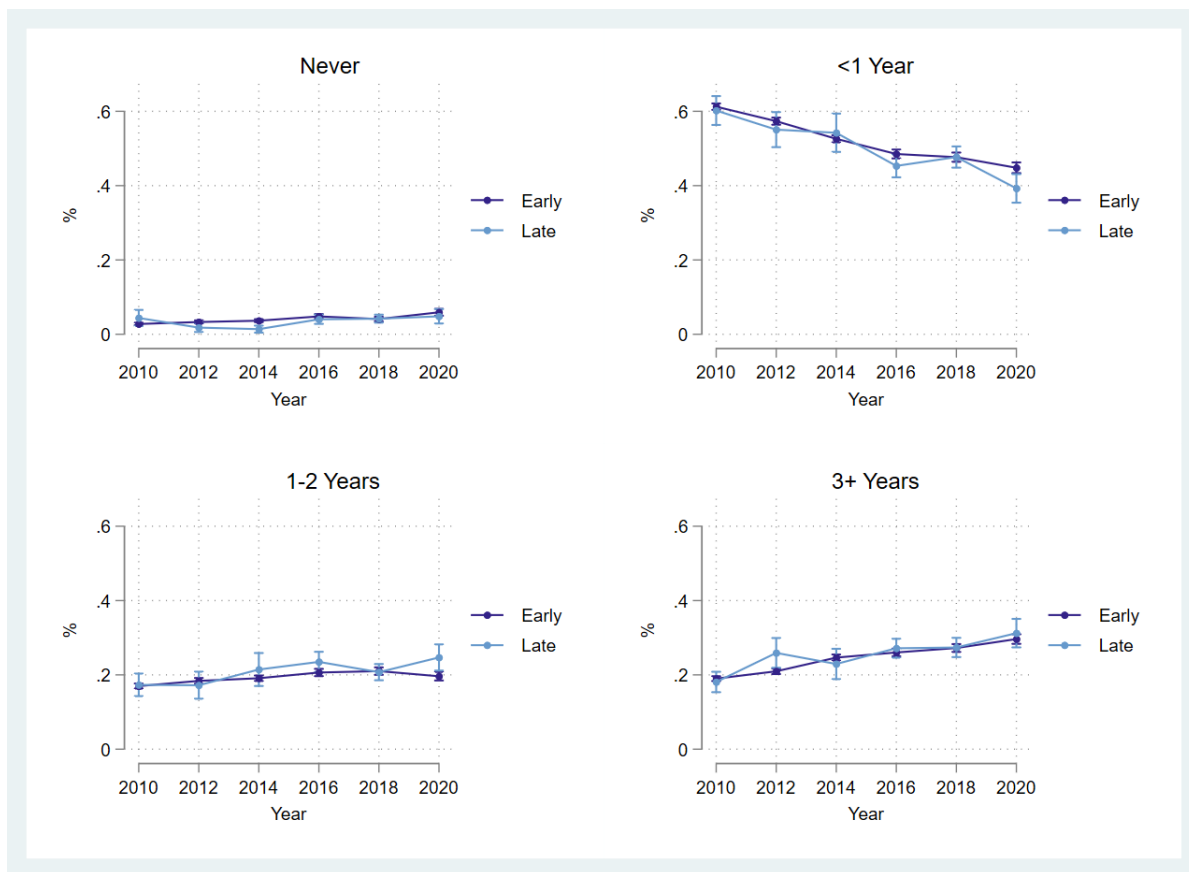


7.2 Supplemental Figure 2: Mammograms



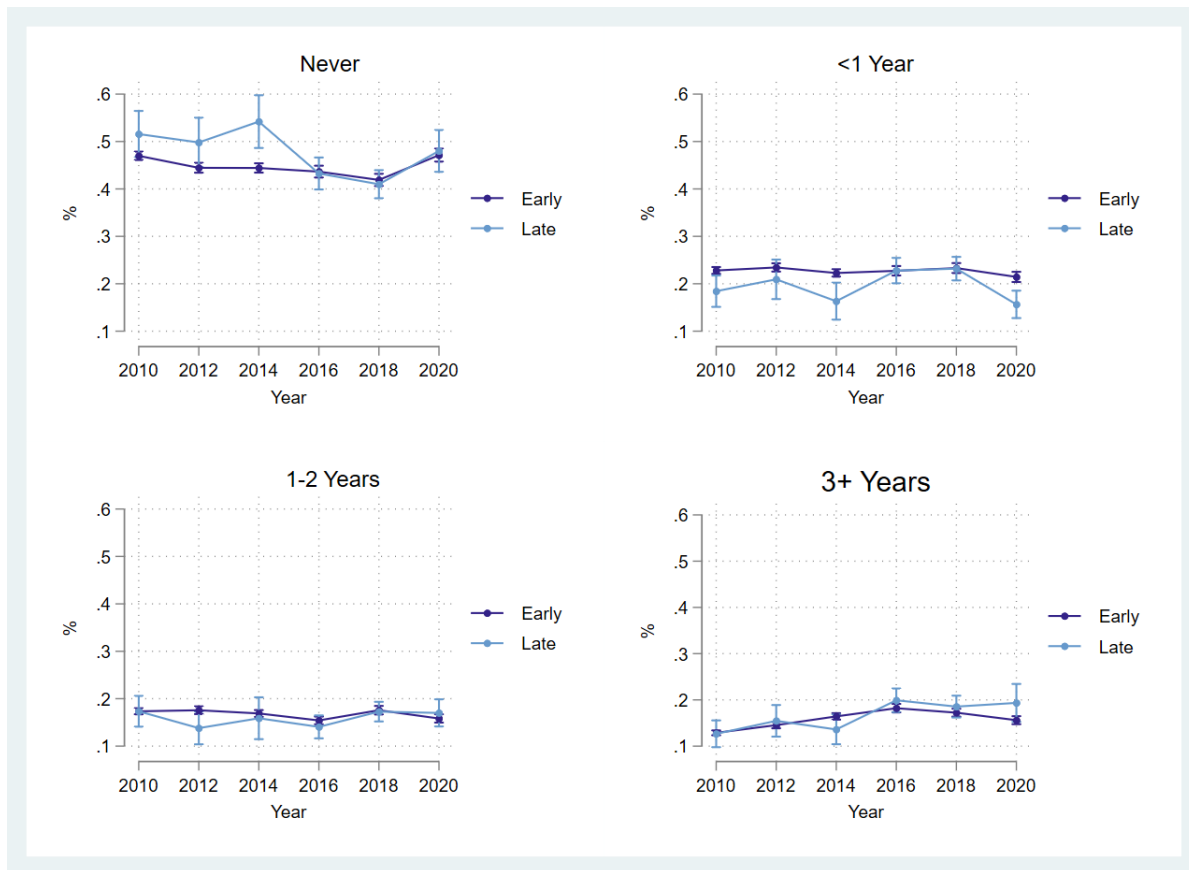
Supplemental Figure 1 shows the year-by-year proportion of adults reporting having never received a mammogram, having received a mammogram in the past year, having received a mammogram 1-2 years ago, and having received a mammogram 3 or more years ago. The "early" cohort are adults surveyed by BRFSS in the first three months of the survey wave and the "late" cohort are adults surveyed in the final three months (Jan-Mar) or second year of the survey wave.

7.3 Supplemental Figure 3: Pap Smears



Supplemental Figure 3 shows the year-by-year proportion of adults reporting having never received a pap smear, having received a pap smear in the past year, having received a pap smear 1-2 years ago, and having received a pap smear 3 or more years ago. The "early" cohort are adults surveyed by BRFSS in the first three months of the survey wave and the "late" cohort are adults surveyed in the final three months (Jan-Mar) or second year of the survey wave.

7.4 Supplemental Figure 4: Colonoscopies or Sigmoidoscopies



Supplemental Figure 3 shows the year-by-year proportion of adults reporting having never received a colonoscopy or sigmoidoscopy, having received a colonoscopy or sigmoidoscopy in the past year, having received a colonoscopy or sigmoidoscopy 1-2 years ago, and having received a colonoscopy or sigmoidoscopy 3 or more years ago. The "early" cohort are adults surveyed by BRFSS in the first three months of the survey wave and the "late" cohort are adults surveyed in the final three months (Jan-Mar) or second year of the survey wave.

Table 2: Marginal Effect Estimates for 2020*Late Group (Linear & Multinomial Logistic Regression Models)

		Model	
		Linear	Logistic
Mammogram	Never	-0.029* (0.013)	-0.028*** (0.000)
	<1 Year	-0.021 (0.034)	-0.022 (0.030)
	1-2 Years	0.031* (0.015)	0.031*** (0.000)
	3+ Years	0.020 (0.024)	0.020 (0.037)
Pap Smear	Never	-0.011 (0.012)	-0.010 (0.038)
	<1 Year	-0.043 (0.031)	-0.055 (0.069)
	1-2 Years	0.042* (0.019)	0.038* (0.027)
	3+ Years	0.012 (0.018)	0.028 (0.019)
Colonoscopy / Sigmoidoscopy	Never	-0.010 (0.020)	-0.016 (0.019)
	<1 Year	-0.035* (0.016)	-0.043*** (0.001)
	1-2 Years	0.030 (0.016)	0.038 (0.084)
	3+ Years	0.015 (0.019)	0.021 (0.024)

*Supplemental - Table 2 reports the 2020*Late effect estimates from our primary linear regression model (left column) and the alternative non-linear multinomial logistic regression model (right column).*

** $p < 0.05$, ** $p < 0.01$ *** $p < 0.001$.*

Table 3: Sensitivity

		Mammogram			Pap Smear			Colonoscopy / Sigmoidoscopy		
		2020*Late	se	Pre-Trend Test (p)	2020*Late	se	Pre-Trend Test (p)	2020*Late	se	Pre-Trend Test (p)
<i>Alt. 1</i>	Never	-0.028	(0.014)	0.290	-0.013	(0.012)	0.000 [^]	-0.002	(0.020)	0.009 [^]
<i>Alt. 2</i>		-0.028	(0.015)	0.540	-0.013	(0.012)	0.005 [^]	-0.002	(0.027)	0.081
<i>Alt. 3</i>		0.005	(0.006)	0.581	-0.013	(0.012)	0.108	0.010	(0.011)	0.010 [^]
<i>Alt. 1</i>	<1 Year	-0.030	(0.032)	0.047	-0.055	(0.031)	0.110	-0.042*	(0.016)	0.356
<i>Alt. 2</i>		-0.030	(0.028)	0.368	-0.055*	(0.025)	0.612	-0.042*	(0.020)	0.294
<i>Alt. 3</i>		-0.047***	(0.012)	0.083	-0.055*	(0.025)	0.008 [^]	-0.043***	(0.009)	0.014
<i>Alt. 1</i>	1-2 Years	0.036*	(0.016)	0.854	0.050*	(0.021)	0.157	0.026	(0.016)	0.207
<i>Alt. 2</i>		0.036	(0.023)	0.935	0.050*	(0.022)	0.338	0.026	(0.019)	0.331
<i>Alt. 3</i>		0.031***	(0.009)	0.398	0.050*	(0.022)	0.933	0.035***	(0.009)	0.416
<i>Alt. 1</i>	3+ Year	0.022	(0.022)	0.366	0.017	(0.017)	0.011 [^]	0.019	(0.020)	0.001 [^]
<i>Alt. 2</i>		0.022	(0.024)	0.539	0.017	(0.025)	0.275	0.019	(0.023)	0.260
<i>Alt. 3</i>		0.011	(0.009)	0.618	0.017	(0.025)	0.056	-0.002	(0.009)	0.085

*Supplemental - Table 3 reports the 2020*Late effect estimates for three alternative linear probability regression models. Alt 1 removes the state-level fixed effects. Alt 2 removes the state-level fixed effects and does not cluster robust standard errors at the state-level, opting only to estimate unclustered robust standard errors. Alt 3 removes fixed effects, does not cluster robust standard errors, and does not weight the analyses by BRFSS supplied sampling weights. * $p < 0.05$, ** $p < 0.01$ *** $p < 0.001$.*

Table 4: Self-reported rates (2010-2018) of most recent cancer screening for early and late survey groups

		Survey Wave Group					
		Early		Late		T	p
Mammogram	Never	0.342	(0.007)	0.355	(0.009)	1.860	0.200
	<1 Year	0.400	(0.007)	0.379	(0.008)	-3.000	0.100
	1-2 Years	0.116	(0.001)	0.121	(0.003)	5.000	0.040
	3+ Years	0.143	(0.004)	0.145	(0.004)	0.500	0.670
Pap Smear	Never	0.088	(0.003)	0.102	(0.006)	4.670	0.040
	<1 Year	0.467	(0.008)	0.420	(0.009)	-5.880	0.030
	1-2 Years	0.172	(0.003)	0.186	(0.009)	4.670	0.040
	3+ Years	0.274	(0.008)	0.292	(0.008)	2.250	0.150
Colon/Sigmoidoscopy	Never	0.417	(0.006)	0.417	(0.012)	0.000	1.000
	<1 Year	0.211	(0.005)	0.195	(0.008)	-3.200	0.090
	1-2 Years	0.159	(0.004)	0.146	(0.008)	-3.250	0.080
	3+ Years	0.213	(0.006)	0.242	(0.010)	4.830	0.040

Supplemental - Table 4 reports the rates for each mutually exclusive cancer screening category (as a proportion) of the total sample of adults surveyed by BRFSS in years 2010, 2012, 2014, 2016, and 2018. The rates are stratified by adults surveyed early in the survey wave and adults surveyed later in the survey wave. The t-statistic is the result of the two-sample proportion test.

Table 5: Demographic rates (2010-2018) for early and late survey groups

Demographic Group	Survey Wave Group				T	p
	Early		Late			
Age 18-24	0.126	(0.002)	0.134	(0.003)	4.000	0.060
Age 25-29	0.081	(0.002)	0.091	(0.006)	5.000	0.040
Age 30-34	0.094	(0.002)	0.103	(0.003)	4.500	0.050
Age 35-39	0.081	(0.001)	0.088	(0.003)	7.000	0.020
Age 40-44	0.089	(0.001)	0.088	(0.002)	-1.000	0.420
Age 45-49	0.080	(0.001)	0.077	(0.001)	-3.000	0.100
Age 50-54	0.097	(0.001)	0.094	(0.002)	-3.000	0.100
Age 55-59	0.081	(0.001)	0.081	(0.003)	0.000	1.000
Age 60-64	0.080	(0.001)	0.077	(0.002)	-3.000	0.100
Age 65-69	0.061	(0.001)	0.059	(0.003)	-2.000	0.180
Age 70-74	0.048	(0.001)	0.043	(0.004)	-5.000	0.040
Age 75-79	0.038	(0.001)	0.030	(0.001)	-8.000	0.020
Age 80-84	0.043	(0.002)	0.034	(0.002)	-4.500	0.050
non-Hispanic White	0.659	(0.031)	0.581	(0.065)	-2.520	0.130
non-Hispanic Black	0.114	(0.011)	0.106	(0.019)	-0.730	0.540
non-Hispanic other race/ethnicity	0.074	(0.010)	0.100	(0.026)	2.600	0.120
Hispanic	0.136	(0.027)	0.197	(0.055)	2.260	0.150
No primary education	0.002	(0.001)	0.003	(0.001)	1.000	0.420
Primary education only	0.041	(0.005)	0.053	(0.011)	2.400	0.140
Some High School education, no degree	0.092	(0.002)	0.093	(0.004)	0.500	0.670
High School degree only	0.285	(0.008)	0.270	(0.015)	-1.870	0.200
Some college education, no bachelor's degree	0.305	(0.005)	0.308	(0.007)	0.600	0.610
Bachelor's degree or more	0.274	(0.007)	0.273	(0.007)	-0.140	0.900
Married	0.524	(0.005)	0.515	(0.009)	-1.800	0.210
Divorced	0.105	(0.002)	0.101	(0.004)	-2.000	0.180
Widowed	0.066	(0.002)	0.059	(0.004)	-3.500	0.070
Seperated	0.024	(0.001)	0.024	(0.001)	0.000	1.000
Never Married	0.237	(0.005)	0.251	(0.010)	2.800	0.110
Unmarried Partner	0.044	(0.002)	0.050	(0.005)	3.000	0.100

Supplemental - Table 5 reports the rates each demographic group (used as independent variables in the primary analysis) of the total sample of adults surveyed by BRFSS in years 2010, 2012, 2014, 2016, and 2018. The rates are stratified by adults surveyed early in the survey wave and adults surveyed later in the survey wave. The t-statistic is the result of the two-sample proportion test.

Table 6: Pre-Trend Tests

		Pre-Treatment Coefficient Estimates									
		2010*Late		2012*Late		2014*Late		2016*Late		Joint Test (p)	
Mammogram	Never	-0.007	(0.018)	0.006	(0.016)	-0.013	(0.014)	-0.018	(0.012)	0.307	
	<1 Year	-0.012	(0.023)	-0.022	(0.024)	0.002	(0.025)	0.021	(0.021)	0.027	
	1-2 Years	-0.008	(0.021)	0.000	(0.019)	0.001	(0.020)	-0.001	(0.016)	0.965	
	3+ Years	0.027	(0.021)	0.016	(0.018)	0.010	(0.013)	-0.003	(0.015)	0.499	
Pap Smear	Never	0.017	(0.011)	-0.009	(0.012)	-0.025**	(0.008)	-0.010	(0.010)	0.000 [^]	
	<1 Year	0.019	(0.022)	0.018	(0.026)	0.045*	(0.021)	-0.006	(0.015)	0.007 [^]	
	1-2 Years	-0.012	(0.014)	-0.018	(0.017)	0.001	(0.017)	0.022	(0.014)	0.319	
	3+ Years	-0.024	(0.016)	0.009	(0.019)	-0.021	(0.018)	-0.006	(0.017)	0.249	
Colonoscopy/ Sigmoidoscopy	Never	0.019	(0.017)	0.015	(0.019)	0.019	(0.019)	-0.024	(0.018)	0.257	
	<1 Year	-0.030	(0.019)	-0.023	(0.013)	-0.037	(0.023)	-0.009	(0.013)	0.445	
	1-2 Years	0.012	(0.020)	-0.021	(0.015)	0.006	(0.015)	-0.009	(0.013)	0.096	
	3+ Years	-0.011	(0.010)	0.014	(0.011)	-0.018*	(0.008)	-0.016	(0.009)	0.002 [^]	

Supplemental - Table 6 reports the year-by-year coefficients of the event-history analyses (excluding 2020) with year 2018 as the baseline. Significant coefficients indicate differences in screening rate levels between quasi-treatment cohorts. The Joint Test (p) column reports the p-value from the Wald test, testing if each of the reported coefficient jointly equals zero. The Bonferonni correction was used to account for multiple hypotheses. * $p < 0.05$, ** $p < 0.01$, *** $p < 0.001$. Note: [^] $p < \text{multiple-test corrected significance level for Joint Test}$.