

1 *Research article*

2 **The impact of surgical mask-wearing, contact tracing program, and**
3 **vaccination on COVID-19 transmission in Taiwan from January 2020**
4 **to March 2022: a modelling study**

5 **Tatiana Filonets^{1,2}, Maxim Solovchuk^{1,2,*} and Wayne Gao³**

6 ¹ Department of Engineering Science and Ocean Engineering, National Taiwan University, No. 1,
7 Sec. 4, Roosevelt Road, Taipei 10617, Taiwan; tfilonets@gmail.com (T.F.);
8 solovchuk@gmail.com (M.S.)

9 ² Institute of Biomedical Engineering and Nanomedicine, National Health Research Institutes, No.
10 35, Keyan Road, Zhunan 35053, Taiwan

11 ³ College of Public Health, Taipei Medical University, No. 250, Wuxing Street, Xinyi District,
12 Taipei 11031, Taiwan; waynegao@tmu.edu.tw

13 * **Correspondence:** solovchuk@gmail.com

14 **Abstract:** The effectiveness of interventions such as public mask-wearing, contact tracing, and
15 vaccination presents an important lesson for control of the further COVID-19 outbreaks without of
16 whole country lockdowns and the restriction of individual movement. We simulated different
17 scenarios of COVID-19 waves in Taiwan from 2020 to the beginning of March 2022 and considered
18 the following interventions: travel restrictions, quarantine of infected individuals, contact tracing,
19 mask-wearing, vaccination, and mass gathering restrictions. We propose an epidemiological
20 compartmental model modified from the susceptible-exposed-infectious-removed (SEIR) model and
21 derive a formula for the basic reproduction number (R_0) describing its dependence on all investigated
22 parameters. The simulation results are fitted with the official Taiwanese COVID-19 data. Thus, the
23 results demonstrate that the fast introduction of the interventions and maintaining them at a high
24 level are able the outbreak control without strict lockdowns. By estimation of the R_0 , it was shown
25 that it is necessary to maintain on high implementation level of both non- and pharmaceutical
26 intervention types to control the COVID-19 transmission. Our results can be useful as advice or
27 recommendation for public health policies, and our model can be applied for other epidemiological
28 simulation studies.

29 **Keywords:** COVID-19; SARS-CoV-2 variants; transmission dynamics; non-pharmaceutical
30 interventions; vaccination; epidemiological modelling; compartmental model

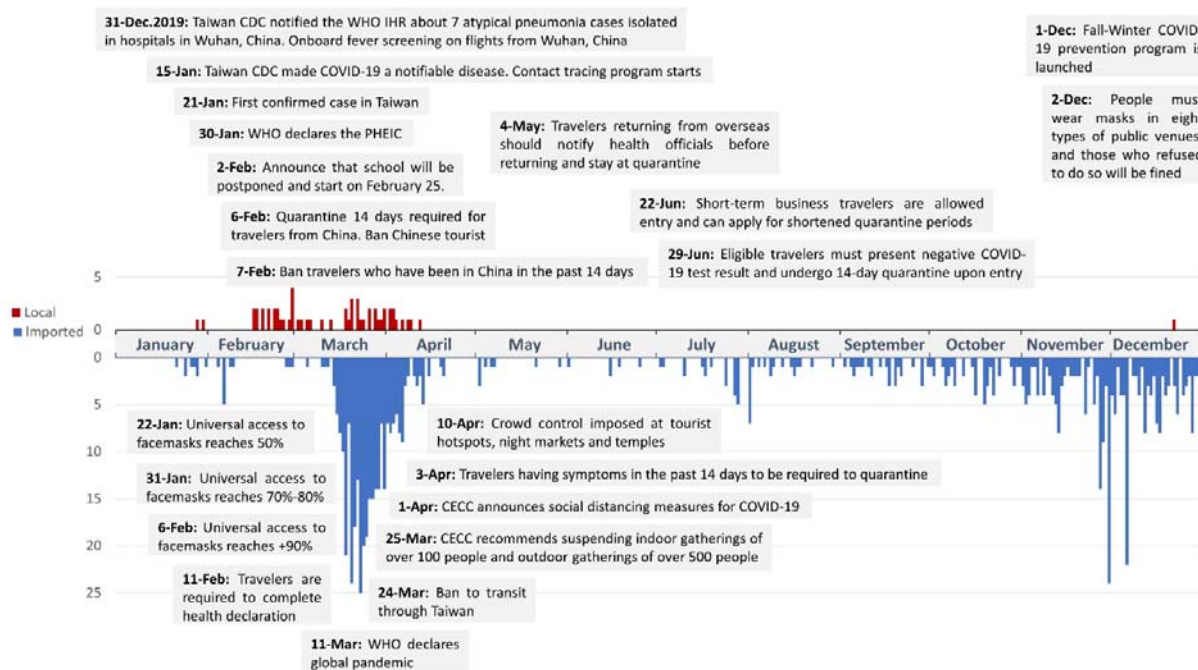
32 **1. Introduction**

33 From the beginning of 2020 when the worldwide COVID-19 outbreak has begun, Taiwan has
34 one of the most successful of COVID-19 controlling story. The Taiwanese government was prepared

35 for the situation due to the emergency response network for novel infectious disease outbreaks
36 established after the SARS outbreak in 2003 [1]. In 2021, Taiwan had a daily maximum of 534
37 domestic cases reported on May 26, 2021. At the end of March 2022, Taiwan started to change the
38 COVID-19 strategy from zero cases policy to living with the virus. Some restrictions started to relax
39 from March 2022 since a large proportion of the population is vaccinated and the Omicron variant
40 has less severe symptoms. In the current study, we investigated the transmission of different
41 COVID-19 variants in Taiwan: January–March 2020 (original), May–July 2021 (Alpha),
42 July–December 2021 (Delta), and January–March 2022 (Omicron).

43 While Taiwan is relatively close to mainland China, the country has an excellent record of
44 eradicating local COVID-19 transmission in the face of continued imported cases since January,
45 2020. In 2019, when the world was unaware that a pandemic would soon strike, Taiwan actively
46 inquired to the World Health Organization (WHO) about seven atypical pneumonia cases isolated in
47 hospitals in Wuhan via the National Focal Point reporting system mandated by the International
48 Health Regulation (IHR) [2]. At the same time, the country implemented onboard screening of
49 passengers on all flights from Wuhan and was among the first countries to ban travelers from the
50 province [3]. During the wave of COVID-19 in January–March 2020, Taiwan quickly reacted to the
51 situation and began controlling the spread of the virus. Globally, Taiwan was an early implementer of
52 non-pharmaceutical interventions, including entry restrictions, screening (health checks) for travelers,
53 quarantining for travelers and infected individuals, and contact tracing based on collected data [3–5].
54 On February 6, 2020, Taiwan launched the Name-Based Mask Distribution System for the citizens to
55 purchase a specific number of masks [5]. Taiwan government has facilitated mask-wearing by
56 banning the export of masks and taking measures to prevent price gouging. There was no local
57 transmission in the country for over 250 days from April to December 2020 [6].

58 In 2020, Taiwan could contain the local spread of the virus despite the imported cases waves
59 [2,7]. Taiwan’s ability to flatten and eventually eliminate local COVID-19 transmission in the face of
60 imported cases demonstrates the effectiveness of its robust outbreak containment measures (Figure
61 1).



62

63 **Figure 1.** Timeline of officially confirmed COVID-19 cases in 2020 in Taiwan with control
64 measures and their implementation dates.

65 The government took rapid action to provide a steady supply of face masks to residents. The
66 CECC set the price of masks, used government funds and military personnel to increase mask
67 production [3]. At the end of April 2020, mask production in the country increased from 1.88 million
68 to 19 million units per day [8]. In addition, contact tracing and quarantine requirements have played
69 critical roles in controlling the spread of COVID-19. Taiwan has the national contact tracing platform
70 TRACE developed by CDC in 2018 [9,10]. In addition, Taiwan CECC also set up a
71 smartphone-based real-time locating system to track contacts' phone signals and alert local
72 authorities if anyone left their designated location or switched off their phone [9]. All individuals
73 determined to have been in contact with an infected person must quarantine at home for 14 days.
74 This data has also assisted officials in ensuring that individuals remain quarantined for the required
75 period. Taiwan's experience with past epidemics (i.e., SARS in 2003 and H1N1 in 2009) has
76 influenced Taiwan CDC to continuously improve and adjust strategies for pandemic response and
77 control before vaccination program [11].

78 The next wave during May–July 2021 was the major outbreak that took place in Taiwan after
79 more than a year of COVID-19 (450–530 domestic cases reported at the end of May). Taiwanese
80 production of medical masks, a high percentage of mask-wearing, alcohol sanitizer, other medical
81 supplies, and establishment of a QR-code registration system at stores and other establishments for
82 contact tracing played the most important role to eliminate the outbreak during a few months. In
83 addition, another important non-pharmaceutical intervention was fast and strict restrictions on mass
84 gathering: five people indoors and ten people outdoors [12]. It should be noted that the strict
85 gathering restriction was in action from May 19 to July 27. After July 27, the allowed number of

86 gathering people has been increased to 50 indoors, 100 outdoors [13]. By July 2021, daily numbers
87 of domestic cases returned to the single digits for the first time. August 25 saw the first day with zero
88 cases since the start of the outbreak. From August 24, limit on the number of people in gatherings
89 raised to 80 people indoors and 300 people outdoors [14], and only after October 5, some
90 entertainment venues had been opened [15]. Pharmaceutical intervention – vaccination – has been
91 only begun in 2021. On March 22, 2021, the first vaccination program using AstraZeneca vaccine
92 was started in Taiwan [16]. On July 27, 2021, people with two doses were 1.2% and people with one
93 dose were 28% of the whole population of Taiwan [17].

94 During the wave in January–March 2022, only non-pharmaceutical interventions were not
95 enough to contain the outbreak. New variants Delta and Omicron have much higher infection rates
96 than previous variants. For outbreak control, vaccination is also necessary together with other
97 non-pharmaceutical interventions. However, vaccination has smaller protection against Omicron than
98 Delta [18]. In Taiwan, on January 13, 2022, already 71.55% was vaccinated with the second dose and
99 only 3.46% with booster, whereas on March 7, 2022, 77.22% was with the second dose and 44.84%
100 with booster [17,19]. Recent studies investigated that vaccination after the second dose loses its
101 efficiency after 20 weeks but a booster dose can again increase the efficiency by more than 60%
102 [18,20–23]. This is why Taiwan started to gradually relax various gathering restrictions from March
103 2022, since pharmaceutical interventions (vaccination) were implemented at high levels [24].
104 However, Taiwan’s success so far is no guarantee that it can totally control COVID-19, and the
105 government continues to urge people to remain vigilant, continue wearing masks, and do vaccination
106 as the pandemic continues.

107 Considering the above-mentioned interventions as well as the flow of travelers between Wuhan
108 and Taiwan from December 2019 to January 2020, we simulated different scenarios of COVID-19
109 waves in Taiwan from January 2020 to the beginning of March 2022. The model results demonstrate
110 the effectiveness of the rapid implementation of various control measures for reducing local
111 transmission during a pandemic before a universal pharmaceutical intervention (from 2020 to March
112 21, 2021) and together with pharmaceutical intervention (from March 22, 2021 to the beginning of
113 March, 2022).

114 **2. Materials and methods**

115 *2.1. Model*

116 The susceptible-exposed-infectious-removed (SEIR) model is frequently used for modeling
117 disease dynamics [25–27]. With the standard SEIR model, individuals are placed in one of four
118 stages: susceptible (S), exposed (E), infected (I), and removed (or recovered) (R). However, it is now
119 well-reported that pre-symptomatic and asymptomatic cases are crucial in the spread of COVID-19,
120 and several modified versions of the SEIR model have been proposed [28–31]. Modifications include
121 the addition of asymptomatic cases [28,31], a special category of individuals who are quarantined or
122 hospitalized [30,31], and the consideration of contact tracing and mask-wearing [29–31]. In the
123 current study, we propose an epidemiological compartmental model that accounts for all of the
124 above-mentioned modifications. We hypothesize that this modified model can more precisely

125 describe the dynamic transmission of COVID-19 compared to a simple SEIR model. We used the
126 modified model to describe the dynamics of the spread of COVID-19 in Taiwan during the
127 2020–2022 years and demonstrate the impact of various interventions especially such as
128 mask-wearing and contact tracing. In addition, we developed a formula for the basic reproduction
129 number (R_0) for our model, which describes the dependence of R_0 on all model parameters. To
130 define R_0 , we used the next-generation matrix (NGM) approach proposed by Diekmann et al.
131 [32,33]. It should be mentioned that in the current study we use fixed averaged values for the
132 parameters and don't use any distributions for the model parameters.

133 2.1.1. Model including asymptomatic and pre-symptomatic cases

134 To ensure our model accurately reflects the real-world scenario, we added asymptomatic cases
135 and pre-symptomatic cases to the modified SEIR model, based on previous models [28,31]. This
136 initial model includes six stages: susceptible (S), asymptomatic (A), exposed or pre-symptomatic (E),
137 infected or symptomatic (I), symptomatic under quarantine or hospitalized (Q), and recovered (R).
138 The following system of equations describes the model:

$$139 \quad \dot{S} = -\frac{\beta}{N}S(\mu A + \varepsilon E + I) \quad (1)$$

$$140 \quad \dot{A} = \frac{\alpha\beta}{N}S(\mu A + \varepsilon E + I) - \gamma_1 A \quad (2)$$

$$141 \quad \dot{E} = \frac{(1-\alpha)\beta}{N}S(\mu A + \varepsilon E + I) - E/T_{inc} \quad (3)$$

$$142 \quad \dot{I} = E/T_{inc} - I/T_{iso} \quad (4)$$

$$143 \quad \dot{Q} = I/T_{iso} - \gamma_2 Q \quad (5)$$

$$144 \quad \dot{R} = (\gamma_1 A + \gamma_2 Q)(1 - \delta) \quad (6)$$

145 Eq (1) describes the dynamics of reducing the number of uninfected (susceptible) people S . The
146 transmission rate of the COVID-19 from infected cases denoted β , is one of the most important
147 parameters. Asymptomatic (A) and pre-symptomatic (E) cases have smaller transmission abilities
148 than infected persons with symptoms (I). Therefore, we have the relative infectivity of asymptomatic
149 individuals denoted μ , and the ratio of pre-symptomatic transmission (the probability of
150 transmission before symptoms appear) denoted ε .

151 Eq (2) describes the dynamics of asymptomatic cases A . Each person in the S state can be
152 converted to either the A state with probability $\alpha\beta$ (where β is the transmission rate and α is the
153 probability of being asymptomatic after infection). An asymptomatic individual infects others with
154 probability $\alpha\beta$ and recovers with probability $\gamma_1 = 1/T_{a,inf}$, where $T_{a,inf}$ is the duration of
155 infection for asymptomatic individuals.

156 Eq (3) describes the dynamics of exposed individuals E who are infected but have not yet
157 developed symptoms and, thus, are pre-symptomatic. The probability that an individual is
158 susceptible and will later become pre-symptomatic is $(1 - \alpha)\beta$. A person in the E state will move
159 to the I state with probability $1/T_{inc}$, where T_{inc} is the incubation period.

160 Eq (4) describes the dynamics of symptomatic infected people I who are not yet hospitalized

161 or quarantined and can infect healthy people S . People in the I state can be isolated with a delay of
162 T_{iso} between the onset of symptoms and isolation. T_{iso} is called isolation time. Therefore, an
163 individual from the I state will move to the Q state with probability $1/T_{iso}$.

164 Eq (5) describes the dynamics of symptomatic infected people under home quarantine or
165 hospitalization (Q). People in the Q state will recover (move to the R state) or die with probability
166 $\gamma_2 = 1/(T_r - T_{iso})$, where T_r represents the interval between the onset of symptoms and recovery
167 or death. The difference between T_r and T_{iso} is the interval between hospitalization and recovery
168 or death.

169 Eq (6) describes the dynamics of people who have recovered and are no longer contagious (R).
170 Since this stage represents only recovered people, all people in the R state will be alive with
171 probability $(1 - \delta)$, where δ is the death rate.

172 2.1.2. Model including contact tracing

173 On January 15, 2020, the Taiwan Centers for Disease Control (Taiwan CDC) made COVID-19
174 a notifiable disease [34]. Therefore, we can assume that contact tracing began in Taiwan on this date.
175 Based on work by Nuzzo et al. [30], to account for this intervention in the model, we introduce the
176 parameter tr which represents the proportion of traced contacts. A new state T accounts for people
177 who were in contact with an infected person and isolated as a result of contact tracing (therefore, can
178 no longer infect others). Considering, there are asymptomatic and pre-symptomatic cases within the
179 C state, we divide it into two parts:

- 180 • C_s comprises pre-symptomatic people from the E state who are self-isolating due to contact
181 tracing;
- 182 • C_a comprises asymptomatic people from the A state who are self-isolating due to contact
183 tracing.

184 Both pre-symptomatic and asymptomatic cases may be under self-isolation if they were in
185 contact with a symptomatic infected person. In other words, if “parents” of new cases in the E or A
186 states (from whom they were infected) are symptomatic then contact tracing can be done for these
187 new cases. For pre-symptomatic individuals in the E state, contact tracing works but with some
188 delay. We suppose that after the onset of symptoms in one person, their traced contacts will be under
189 self-quarantine with a delay T_{iso} . We assume this delay because of the time required to receive
190 COVID-19 test results. Therefore, a person in the E state can move to the C_s state with probability
191 $tr \cdot pr_s^S / T_{iso}$, where pr_s^S is the probability that the “parent” of the new case is symptomatic. A
192 person in the A state can move to the C_a state with probability $tr \cdot pr_a^S / T_{iso}$, where pr_a^S is the
193 ratio of new asymptomatic cases produced from symptomatic.

194 We suppose that after self-isolation, asymptomatic infected people will not be infected again, so
195 individuals in the C_a state move to the R state after a home quarantine period T_q with probability
196 $\gamma_3 = 1/T_q$. A person from the C_s state can move to the Q state after the development of symptoms
197 (since they were traced in the pre-symptomatic period). The time delay T_{iso} must also be considered.
198 Therefore, the probability that a person will move from the T_s state to the Q state is $\gamma_4 =$
199 $1/(T_{inc} - T_{iso})$. When contact tracing measures are included, our model takes the following form:

$$200 \quad \dot{S} = -\frac{\beta}{N} S(\mu A + \varepsilon E + I)(1 - tr) \quad (7)$$

$$201 \quad \dot{A} = \frac{\alpha\beta}{N} S(\mu A + \varepsilon E + I)(1 - tr \cdot pr_a^s) - \gamma_1 A - \frac{tr \cdot pr_a^s}{T_{iso}} A \quad (8)$$

$$202 \quad \dot{E} = \frac{(1-\alpha)\beta}{N} S(\mu A + \varepsilon E + I)(1 - tr \cdot pr_s^s) - E/T_{inc} - \frac{tr \cdot pr_s^s}{T_{iso}} E \quad (9)$$

$$203 \quad \dot{I} = E/T_{inc} - I/T_{iso} \quad (10)$$

$$204 \quad \dot{C}_a = \frac{tr \cdot pr_a^s}{T_{iso}} A - \gamma_3 T_a \quad (11)$$

$$205 \quad \dot{C}_s = \frac{tr \cdot pr_s^s}{T_{iso}} E - \gamma_4 T_s \quad (12)$$

$$206 \quad \dot{Q} = I/T_{iso} + \gamma_4 T_s - \gamma_2 Q \quad (13)$$

$$207 \quad \dot{R} = (\gamma_1 A + \gamma_2 Q + \gamma_3 T_a)(1 - \delta) \quad (14)$$

208 2.1.3. Model including mask-wearing

209 Mask-wearing is one of the main control measures to combat the spread of COVID-19
 210 transmission [35–37]. To account for mask-wearing in our model, we suppose that masks are worn
 211 by a certain percentage p of the total population N and are not worn by a $1 - p$ percentage of the
 212 total population N . We also suppose that a mask can reduce both the spread of germs and droplets
 213 from an infected person and protect a healthy person from these germs with different effectiveness
 214 [38,39]. Mask efficiency e depends on its type (medical or homemade), the number of layers, and
 215 the material [40–44]. For example, the effectiveness of homemade masks is estimated to range from
 216 2% to 38% whereas the efficiency of surgical masks can vary from 40% to 90% [34,43,45,46]. In our
 217 model, $r = 1 - e$ is used to describe the reduction in the probability of contagion from one person
 218 wearing a mask in an $S-A$, $S-E$, or $S-I$ contact [29].

219 Based on the previous studies [29,31], the subscript n denotes the people who don't wear a
 220 mask, and the subscript m denotes the people who wear a mask. Therefore, the number of equations
 221 in the system is doubled. Denoted by $X = \mu A_n + r\mu A_m + \varepsilon E_n + r\varepsilon E_m + I_n + rI_m$, the model that
 222 includes mask-wearing has the following form:

$$223 \quad \dot{S}_n = -\frac{\beta}{N} S_n X(1 - tr) \quad (15)$$

$$224 \quad \dot{S}_m = -\frac{\beta r}{N} S_m X(1 - tr) \quad (16)$$

$$225 \quad \dot{A}_n = \frac{\alpha\beta}{N} S_n X(1 - tr \cdot pr_a^s) - \gamma_1 A_n - \frac{tr \cdot pr_a^s}{T_{iso}} A_n \quad (17)$$

$$226 \quad \dot{A}_m = \frac{\alpha\beta r}{N} S_m X(1 - tr \cdot pr_a^s) - \gamma_1 A_m - \frac{tr \cdot pr_a^s}{T_{iso}} A_m \quad (18)$$

$$227 \quad \dot{E}_n = \frac{(1-\alpha)\beta}{N} S_n X(1 - tr \cdot pr_s^s) - \frac{E_n}{T_{inc}} - \frac{tr \cdot pr_s^s}{T_{iso}} E_n \quad (19)$$

$$\dot{E}_m = \frac{(1-\alpha)\beta r}{N} S_m X(1 - tr \cdot pr_s^s) - \frac{E_m}{T_{inc}} - \frac{tr \cdot pr_s^s}{T_{iso}} E_m \quad (20)$$

$$\dot{I}_n = E_n/T_{inc} - I_n/T_{iso} \quad (21)$$

$$\dot{I}_m = E_m/T_{inc} - I_m/T_{iso} \quad (22)$$

$$\dot{C}_a = \frac{tr \cdot pr_a^s}{T_{iso}} (A_n + A_m) - \gamma_3 T_a \quad (23)$$

$$\dot{C}_s = \frac{tr \cdot pr_s^s}{T_{iso}} (E_n + E_m) - \gamma_4 T_s \quad (24)$$

$$\dot{Q} = (I_n + I_m)/T_{iso} + \gamma_4 T_s - \gamma_2 Q \quad (25)$$

$$\dot{R} = (\gamma_1 A_n + \gamma_1 A_m + \gamma_2 Q + \gamma_3 T_a)(1 - \delta) \quad (26)$$

The obtained system of equations (15)–(26) is used to simulate the COVID-19 wave in Taiwan during 2021–2022 years. To simulate the beginning of the COVID-19 in Taiwan in January–March of 2020 year, it is necessary to include in the model travelers from Wuhan.

2.1.4. Model including travelers

Since the majority of cases in Taiwan in January 2020 were imported from Wuhan, we model the number of infected people in Wuhan using the SEIR model, taking into account foreign and local (within China) travelers [25]. We use this separate model for travelers to make our final model more realistic.

We denote the estimated number of non-infected and infected passengers from Wuhan to Taiwan as P_{WT} and P_{WT}^{inf} , respectively (for a detailed explanation of the Wuhan model and the derivation of formulas see Supplementary Materials).

Because there is no data about how many travelers were asymptomatic or latent, we added P_{WT}^{inf} to the A , E , and I states. We also split non-infected travelers P_{WT} into two groups: those who wear masks (with probability p) and those who don't wear masks (with probability $1 - p$). Adding P_{WT} and P_{WT}^{inf} to the Eqs (15)–(22), we obtain the model describing the dynamics of COVID-19 propagation in Taiwan during January–March of 2020 year:

$$\dot{S}_n = -\frac{\beta}{N} S_n X(1 - tr) + (1 - p)P_{WT} \quad (27)$$

$$\dot{S}_m = -\frac{\beta r}{N} S_m X(1 - tr) + pP_{WT} \quad (28)$$

$$\dot{A}_n = \frac{\alpha\beta}{N} S_n X(1 - tr \cdot pr_a^s) - \gamma_1 A_n - \frac{tr \cdot pr_a^s}{T_{iso}} A_n + P_{WT}^{inf} \quad (29)$$

$$\dot{A}_m = \frac{\alpha\beta r}{N} S_m X(1 - tr \cdot pr_a^s) - \gamma_1 A_m - \frac{tr \cdot pr_a^s}{T_{iso}} A_m + P_{WT}^{inf} \quad (30)$$

$$\dot{E}_n = \frac{(1-\alpha)\beta}{N} S_n X(1 - tr \cdot pr_s^s) - \frac{E_n}{T_{inc}} - \frac{tr \cdot pr_s^s}{T_{iso}} E_n + P_{WT}^{inf} \quad (31)$$

$$\dot{E}_m = \frac{(1-\alpha)\beta r}{N} S_m X(1 - tr \cdot pr_s^s) - \frac{E_m}{T_{inc}} - \frac{tr \cdot pr_s^s}{T_{iso}} E_m + P_{WT}^{inf} \quad (32)$$

$$\dot{I}_n = E_n/T_{inc} - I_n/T_{iso} + P_{WT}^{inf} \quad (33)$$

$$\dot{I}_m = E_m/T_{inc} - I_m/T_{iso} + P_{WT}^{inf} \quad (34)$$

$$\dot{C}_a = \frac{tr \cdot pr_a^s}{T_{iso}} (A_n + A_m) - \gamma_3 T_a \quad (35)$$

$$\dot{C}_s = \frac{tr \cdot pr_s^s}{T_{iso}} (E_n + E_m) - \gamma_4 T_s \quad (36)$$

$$\dot{Q} = (I_n + I_m)/T_{iso} + \gamma_4 T_s - \gamma_2 Q \quad (37)$$

$$\dot{R} = (\gamma_1 A_n + \gamma_1 A_m + \gamma_2 Q + \gamma_3 T_a)(1 - \delta) \quad (38)$$

2.2. Simulation parameters

In the current section, the values of all model parameters are described for the different COVID-19 waves in Taiwan. Table 1 displays the default values of all parameters used in the model, and Table 2 displays the all non-pharmaceutical interventions.

Table 1. The parameters used in the models.

Parameter	Value	References
β (transmission rate)	0.75 (original)	[54,55]
	1.2 (Alpha)	[57,58]
	1.8 (Delta)	[62]
	3.7 (Omicron)	[63]
δ (death rate)	0.008 (original)	[64]
	0.014 (Alpha)	[65,66]
	0.027 (Delta, Omicron)	[66,67]
	0.019 (Omicron)	[67]
μ (asymptomatic transmission)	0.75	[47]
ε (pre-symptomatic transmission)	0.5	[48]
α (probability of being asymptomatic)	0.45	[49]
$T_{a,inf}$ (duration time of infection for the asymptomatic cases)	19 (days)	[50]
T_{inc} (incubation period)	5.75 (days) (original)	[68]
	5 (days) (Alpha)	[69]
	4 (days) (Delta)	[69]
	3 (days) (Omicron)	[69]
T_{iso} (delay between symptoms onset and isolation)	2; 3 (days)	[70,71]
T_r (interval between onset of symptoms and recovery or death)	18 (days)	[51]
tr (percentage of traced contacts)	[0; 1]	[9]

pr_a^s (ratio of new asymptomatic cases produced from symptomatic cases)	0.15	[52]
pr_s^s (ratio of new (pre-)symptomatic cases produced from symptomatic cases)	0.85	[52]
T_q (quarantine or self-isolation period)	14 (days)	[46]
p (proportion of people wearing a mask)	[0; 1]	[3,5,77]
e (mask efficiency)	0.3; 0.5	[40–44]
Mean vaccine effectiveness against the Delta variant (2 doses)	74.58 %	[18]
Mean vaccine effectiveness against the Omicron variant (2 doses)	29.39 %	[18]
Mean vaccine effectiveness against the Omicron variant (booster dose)	60.57 %	[18]

268

Table 2. Starting dates of interventions and stages.

Interventions	Start dates	References
January–March 2020		
30% of people wear masks	December 25, 2019	[3,5,77]
Contact tracing program	January 15, 2020	[34]
50% of people wear masks	January 22, 2020	[3,5,77]
Start of Wuhan lockdown	January 23, 2020	[82]
70% of people wear masks	January 31, 2020	[3,5,77]
90% of people wear masks	February 6, 2020	[3,5,77]
May–July 2021		
Strong gathering restrictions in Taipei City and New Taipei City	May 15, 2021	[72]
Reducing of isolation time to 2 days	May 15, 2021	[83]
90% of people wear masks	May 15, 2021	[72]
70% of contacts are traced	May 15, 2021	[72,83]
Nationwide strong gathering restrictions	May 19, 2021	[12]
99% of people wear masks	May 19, 2021	[12]
90% of contacts are traced	May 19, 2021	[12]
Nationwide moderate gathering restrictions	July 27, 2021	[13]

269 2.2.1. Fixed parameter values for all waves

270 The relative infectiousness of asymptomatic individuals μ is difficult to investigate although
 271 the Centers for Disease Control and Prevention (CDC) estimated that $\mu = 0.75$ [47]. Based on work
 272 by He et al. [48], the ratio of pre-symptomatic transmission $\varepsilon = 0.45$. Estimation of the proportion
 273 of asymptomatic cases is difficult, however, based on the results of a recent study [49], the
 274 probability of being asymptomatic after infection is assumed $\alpha = 0.45$. The duration of infection for
 275 asymptomatic individuals $T_{a,inf}$ is around 19 days [50]. According to the clinical characteristics of
 276 COVID-19 [51], $T_r = 18$ days. He et al. estimated the ratio of new asymptomatic cases produced
 277 from symptomatic $pr_a^s = 0.15$ [52]. Thus, we set $pr_s^s = 0.85$. The home quarantine period
 278 $T_q = 14$ days.

279 In this paper, we simply assume the main mask efficiency $e = 0.5$ since, in Taiwan, the

majority of people wear medical masks since their access is guaranteed and facilitated by the government [2,53]. Further, medical masks were available at a fixed price from the government beginning in early March 2020 in Taiwan. To investigate how mask effectiveness can affect the results, we also consider lower mask efficiency $e = 0.3$ (but only during 2020 year, since during 2020, the national mask production was being adjusted to provide all residents with medical masks [3,8], and people could wear non-medical masks).

2.2.2. Different parameter values for different waves

Value of the transmission rate β depends on the COVID-19 variant. For the original COVID-19, β estimation varies from 0.5 to 1 [54,55], so we took 0.75. The Alpha variant (B.1.1.7) of the COVID-19 (that was during spring 2021 outbreak in Taiwan [56]) is estimated to be 40–80% more transmissible than the original COVID-19 version [57–61]. We assumed that the transmission rate for the Alpha variant is 60% higher than original COVID-19 and $\beta = 1.2$ [57,58]. The Delta variant (B.1.617.2) estimation demonstrated that it can be 50% more transmissible than the Alpha variant and $\beta = 1.8$ [62]. For the Omicron variant (B.1.1.529), the transmission rate estimated to be 105% higher than the Delta variant and $\beta = 3.7$ [63].

The death rate δ also depends on the COVID-19 variant. For the original COVID-19, δ is estimated between 0.002 and 0.015 [64] and we assumed $\delta = 0.008$. For Alpha variant, we consider $\delta = 0.014$ [65,66]. For Delta variant, we take $\delta = 0.027$ [66,67], and for Omicron variant, $\delta = 0.019$ [67].

The incubation period T_{inc} also depends on the COVID-19 variant. T_{inc} decreases for each new COVID-19 variant. According to recent studies, for the original COVID-19 variant $T_{inc} = 5.75$ days [68]; for the Alpha variant $T_{inc} = 5$, for the Delta variant $T_{inc} = 4$, for the Omicron variant $T_{inc} = 3$ [69].

From the previous studies, the mean value of the isolation time T_{iso} varies between three and four days [70,71]. During the spring outbreak in 2021, Taiwan started to set up outdoors rapid testing posts [72] which is able to reduce the isolation time. We use $T_{iso} = 3$ days for the wave in January–March 2020 and in the beginning of the spring wave. $T_{iso} = 2$ is used during the 2021–2022 years.

Probability of mask-wearing p and contact tracing tr is varied from 0% to almost 100% for different time periods. A study by Jian et al. [9] found that with tracing apps and automatic text messages, as in Taiwan, the ratio of detected cases via contact tracing was 61.5% (during 2020 year). Another study shows [73], during 2020 year around 81% of Taiwanese citizens wore masks outdoors and around 99% of people wore masks indoors or while taken mass transportation.

2.2.3. Mass gathering restrictions efficiency

Mass gathering restriction is one of the most powerful non-pharmaceutical interventions that may relatively fast decrease the disease transmission. As WHO says in its guidance about planning of mass gatherings [74], the high density and mobility of attendees associated with mass gatherings can entail a higher risk of transmission of COVID-19 and a potential destruction of the health system's

318 response capacities if large numbers of people are infected.

319 Mass gathering restrictions can give different strength: light restrictions, for example,
320 gatherings of over 500 people [24,75], moderate restrictions as 50 people indoors and 100 people
321 outdoors [13], or very strict restrictions like five people indoors and ten people outdoors [12,72].
322 Since mass gathering restrictions can reduce the COVID-19 transmission, therefore, the efficiency of
323 gathering restrictions decreases the value of the transmission rate β . In the current paper, we
324 considered that the strict mass gathering restrictions have 46% efficiency which was estimated based
325 on the authors previous work [76]. Other types of the gathering restrictions were assumed with the
326 following efficiencies: moderate strength gathering restrictions have 20% efficiency, light strength
327 gathering restrictions have 15% efficiency.

328 2.2.4. Vaccination efficiency

329 Recent studies demonstrated that two doses are more effective than one dose but vaccine
330 efficiency is reduced during time [18,20–22]. Moreover, vaccines have much smaller resistance to
331 the Omicron variant than to Alpha or Delta variants. However, the booster dose is capable to increase
332 the vaccine effectiveness which can strongly decrease after 15–20 weeks interval after the second
333 dose vaccination [18]. Efficiency of vaccine also depends on vaccine type [18,20–22]. Based on the
334 detailed investigation of different vaccines effectiveness against the Delta and Omicron variants [18],
335 the average value of vaccine efficiency was calculated. The vaccination efficiency by two doses has
336 74.58% against the Delta. Against the Omicron, two doses vaccination has 29.39% efficiency
337 whereas booster dose has 60.57%.

338 Vaccination for the spring outbreak in 2021 year (Alpha variant) was not taken into account
339 since fewer than 1% of Taiwan's residents had been vaccinated [17,19]. The low vaccination rate was
340 caused by supply issues with purchased overseas vaccines and the calming of the Taiwanese
341 population due to low case numbers during the 2020 year.

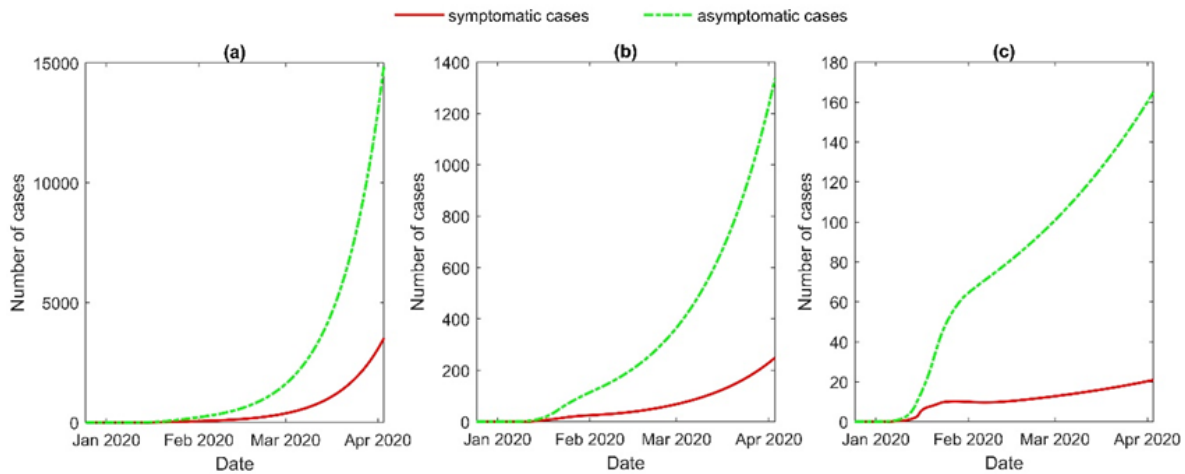
342 3. Results

343 3.1. January–March 2020 (original COVID-19 variant)

344 We modeled the wave of COVID-19 transmission in Taiwan during January–March 2020. We
345 supposed that the percentage of the mask-wearing population in Taiwan increased as the government
346 facilitated universal access to masks. While it is difficult to estimate the percentage of the population
347 who wear masks, our assumptions were based on measures taken by the Taiwanese government and
348 Taiwan CDC and the habitual mask-wearing that is part of the culture in some Asian countries,
349 including Taiwan [3]. Taiwanese people are accustomed to wearing masks when they are ill [53], and
350 there is recent evidence of widespread adherence to mask-wearing. According to a survey among
351 fifth- to twelfth-grade students in Taiwan on the impact of COVID-19 [77], around 63% wear a mask
352 all the time and 25.5% wear a mask in public places, which means around 90% of adolescents in
353 Taiwan wear a mask in public places.

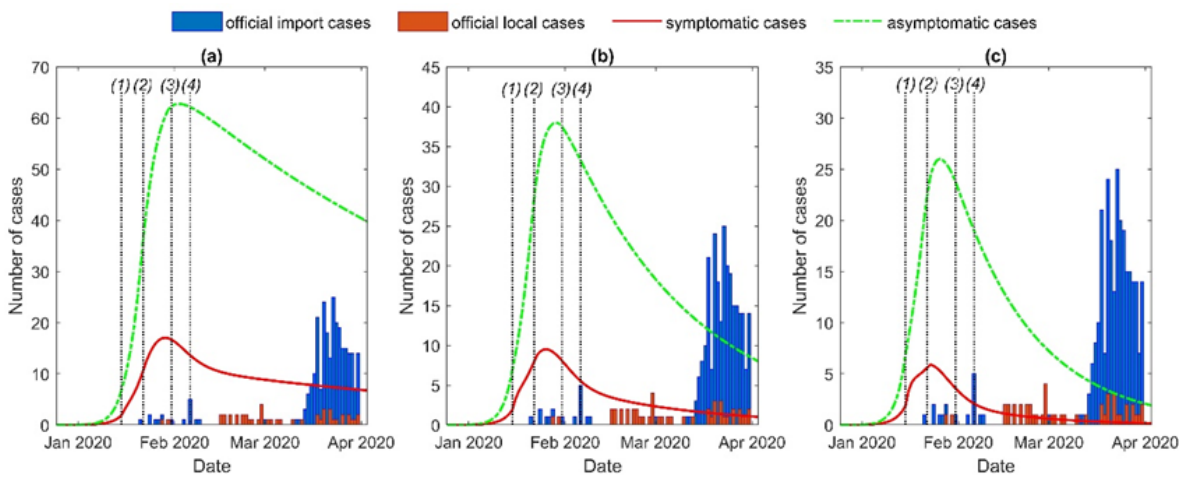
354 In our model, we included and excluded various interventions (listed in Table 2 along with
355 implementation dates). Figures 2–3 show the daily numbers of infected symptomatic individuals and
356 asymptomatic individuals. Running the model starts from December 25, 2019, with the following

357 initial values:



358

359 **Figure 2.** Results of 30% mask efficiency and different percentages of traced contacts: (a) 40%; (b)
360 60%; (c) 80%.



361

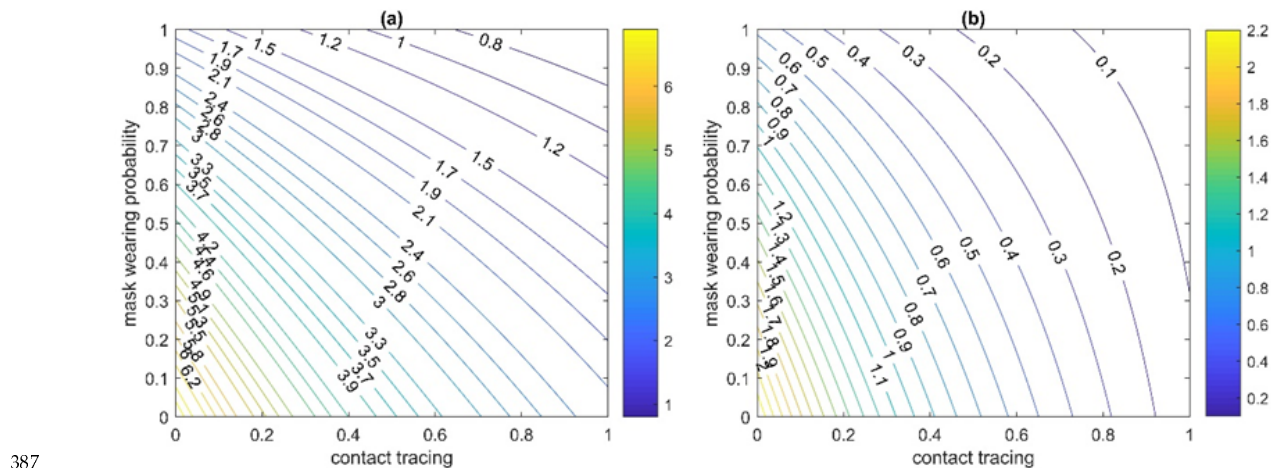
362 **Figure 3.** Comparison of the number of officially reported cases with the simulated results. In the
363 model, 50% mask efficiency and different percentages of traced contacts are considered: (a) 40%; (b)
364 60%; (c) 80%. The main interventions (dates are listed in Table 2): (1) start of contact tracing; (2) 50%
365 of people wearing masks and start of Wuhan lockdown; (3) 70% of people wearing masks; (4)
366 of people wearing masks.

367 We varied the percentage of traced contacts and the effectiveness of masks to obtain the
368 simulation curve of symptomatic cases that is close to official COVID-19 data for the
369 January–March period and to show the influence of these interventions. Figures 2a and 3a show the
370 results when 40% of contacts are traced. Using to represent low effectiveness of masks, the
371 number of cases increases until the beginning of April, with the number of symptomatic cases
372 reaching around 4,000 (Figure 2a). Using to represent the effectiveness of medical masks,

373 the curve peaks around the beginning of February (Figure 3a), after which there is a slow decrease.
 374 The behavior of curves with efficiency η and other values for contact tracing, τ or
 375 τ (Figure 2b–c) is approximately the same as in Figure 2a, but the maximum number of
 376 cases is smaller by tens (Figure 2b) and hundreds of times (Figure 2c). For τ and
 377 (Figure 3b) or τ (Figure 3c), the maximum number of cases is around ten and five,
 378 respectively. In addition, after peaking, the curves in Figure 3b–c move toward zero faster than the
 379 curve in Figure 3a.

380 In Figure 3b–c, the results of our model are very close to the official data before the wave of
 381 imported cases from Europe and the United States at the end of March 2020. Moreover, our model
 382 can estimate the approximate number of asymptomatic cases during January–March 2020 wave in
 383 Taiwan. Using data from Figure 3a, the maximum number of asymptomatic cases was around 60
 384 at the beginning of February 2020.

385 In addition, we estimated R_0 by using the NGM method (see Supplementary Materials). Figure
 386 4 represents the dependency of R_0 on contact tracing τ and mask-wearing probability μ .



388 **Figure 4.** Estimation of R_0 , dependent on mask-wearing probability and contact tracing (using the
 389 next-generation matrix approach) with consideration of asymptomatic cases (a) and with only
 390 consideration of symptomatic cases (b).

391 In the model described in Eqs (27)–(38), many parameters can affect R_0 . However, in this paper,
 392 we focused on the percentage of traced contacts and the percentage of people wearing masks. Since
 393 our model include asymptomatic cases, R_0 was estimated with and without asymptomatic cases (see
 394 Supplementary Materials). R_0 with consideration both asymptomatic and symptomatic cases
 395 (Figure 4a) can be much higher than R_0 with only consideration of symptomatic cases (Figure 4b).
 396 Figure 4a represents that to reach R_0 below one, the percentage of both traced contacts and people
 397 wearing masks must be relatively high, for example, for $\tau = 0.8$ and $\mu = 0.8$, $R_0 \approx 1.1$.
 398 Figure 4b shows that R_0 can be less than one, and, therefore, the outbreak can be controlled when
 399 both contact tracing and mask-wearing probability are greater or equal to 30% (for $\tau = 0.3$ and
 400 $\mu = 0.3$, $R_0 \approx 0.9$). However, such a big difference between results with and without
 401 asymptomatic cases demonstrates how relatively easy the outbreak would be controlled without
 402 asymptomatic cases. In the following sections, the full NGM approach with asymptomatic cases

403 consideration will be used for estimations of .

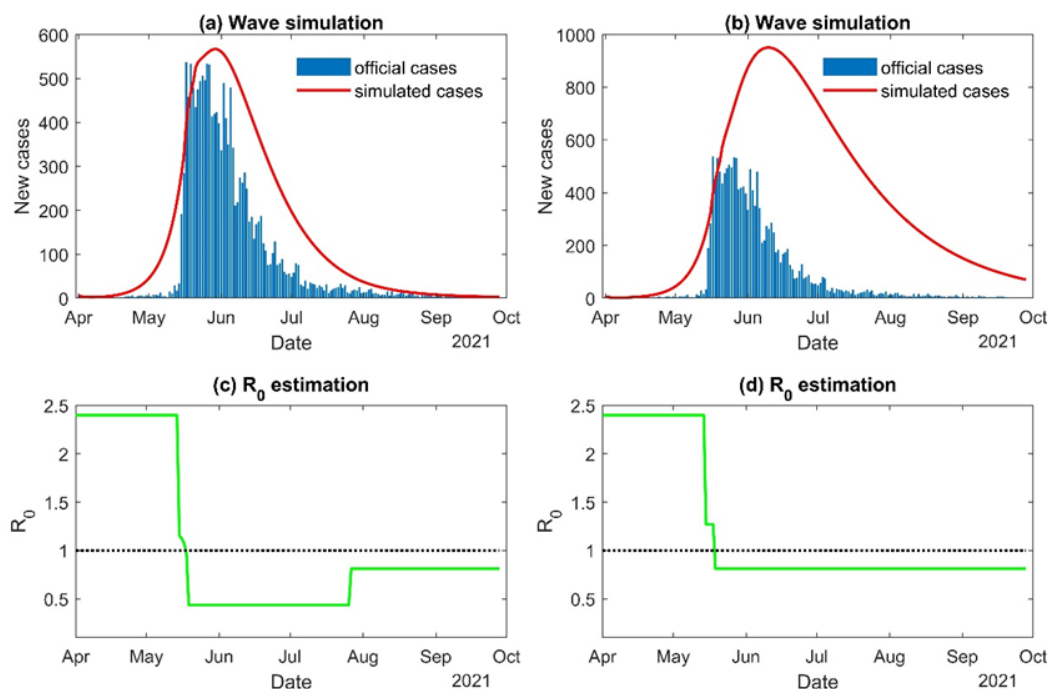
404 3.2. May–July 2021 (Alpha variant)

405 To model the spring 2021 outbreak of COVID-19 in Taiwan during May–July 2021, we supposed
406 that during April and the first half of May, the proportion of the mask-wearing population was
407 sufficiently high and equal to 80% [72], whereas contact tracing was assumed to be equal to 50%,
408 since small number of local cases during whole 2020 year had some relaxation effect.

409 When the number of cases started to increase very fast, the government introduced very quickly
410 strict interventions such as mandatory mask wearing at all times when outside, shutting cinemas and
411 entertainment spots, and gathering restrictions to five indoors and ten outdoors [12,75]. All
412 interventions with dates and their impact on the model parameters are described in Table 2.
413 Simulation of the outbreak in 2021 year starts from April 1, 2021 with the following initial
414 conditions:

415 .

416 Figure 5a demonstrates comparison of official data with simulation results. The obtaining results
417 proves that the fast response of the government with strict interventions is capable to relatively
418 quickly controlling the outbreak. At the peak of the outbreak, the mask-wearing probability was 99%
419 and contact tracing was 90%. Figure 5c shows that estimated R_0 is very fast dropped below one that
420 allows to reduce number of new cases also relatively fast. Even after some relaxation on gathering
421 restrictions at the end of July (50 people indoors and 100 outdoors) [13], R_0 is still less than one
422 that can guarantee outbreak control.



423

424 **Figure 5.** Simulation wave with R_0 estimation when all interventions are used (a) and (c) and when

425 only contact tracing and mask wearing are used **(b)** and **(d)**. Interventions and their dates are listed in
426 Table 2.

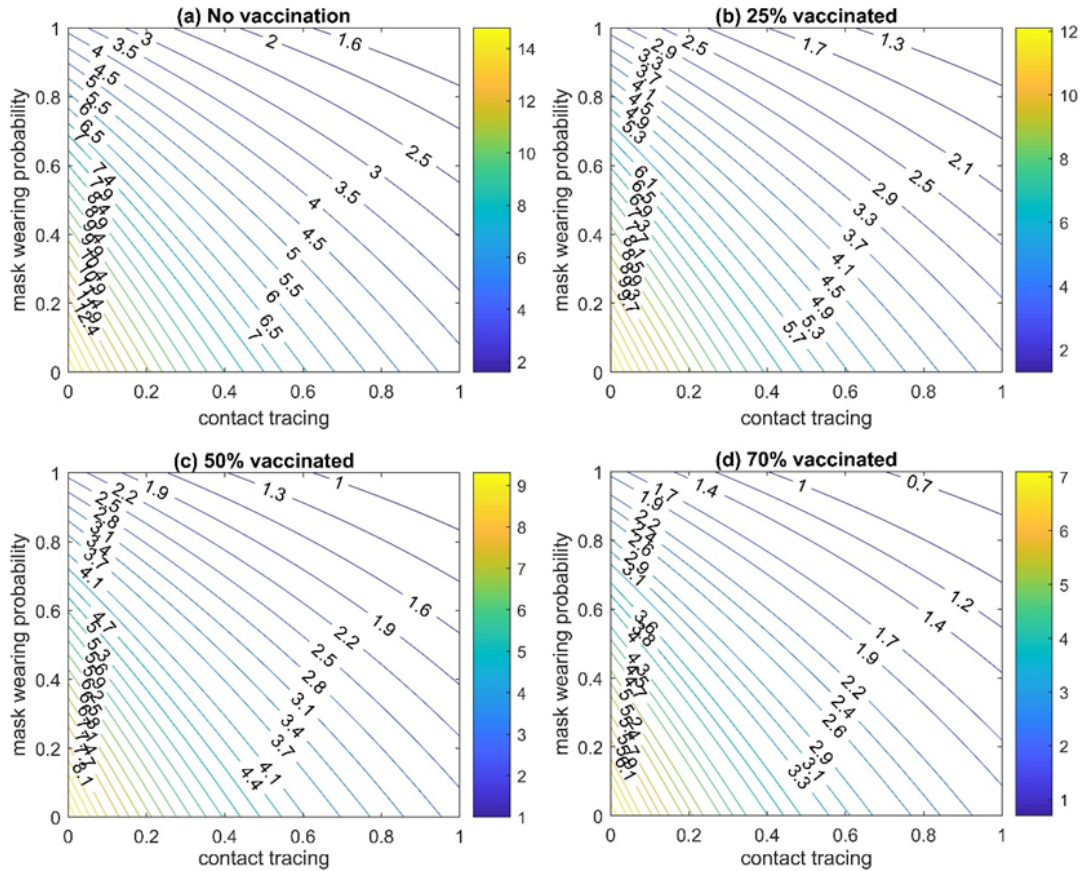
427 Figures 5b and 5d represent the scenario when only probability of mask wearing and contact
428 tracing is increased without mass gathering restrictions. We can see that number of cases is greater
429 almost twice in comparison with official data, and the decrease of number of cases happens much
430 slower than official numbers (Figure 5b). In this scenario, it is still possible to reach outbreak control,
431 however, not so fast and with a much higher number of cases. In Figure 5d, it can be seen that rapid
432 increase of contact tracing ($tr = 0.9$) and mask-wearing ($p = 0.99$) is able to reduce the R_0 value
433 below one.

434 3.3. July–December 2021 (Delta variant)

435 During the second half of 2021, the domestic number of cases was close or equal to zero, despite
436 the fact that the Delta variant had been spread globally in this period. Taiwan continued to adhere to
437 pandemic prevention guidance in order to save the outbreak control. Since Taiwan has only started
438 the vaccination program on March 2021, strong gathering restrictions were almost until the end of
439 2021 [14,15], mask-wearing and contact tracing also performed in a high level.

440 We estimate the value of the basic reproduction number R_0 by using the NGM method to
441 demonstrate how Taiwan was able to keep the local number of cases at zero level.

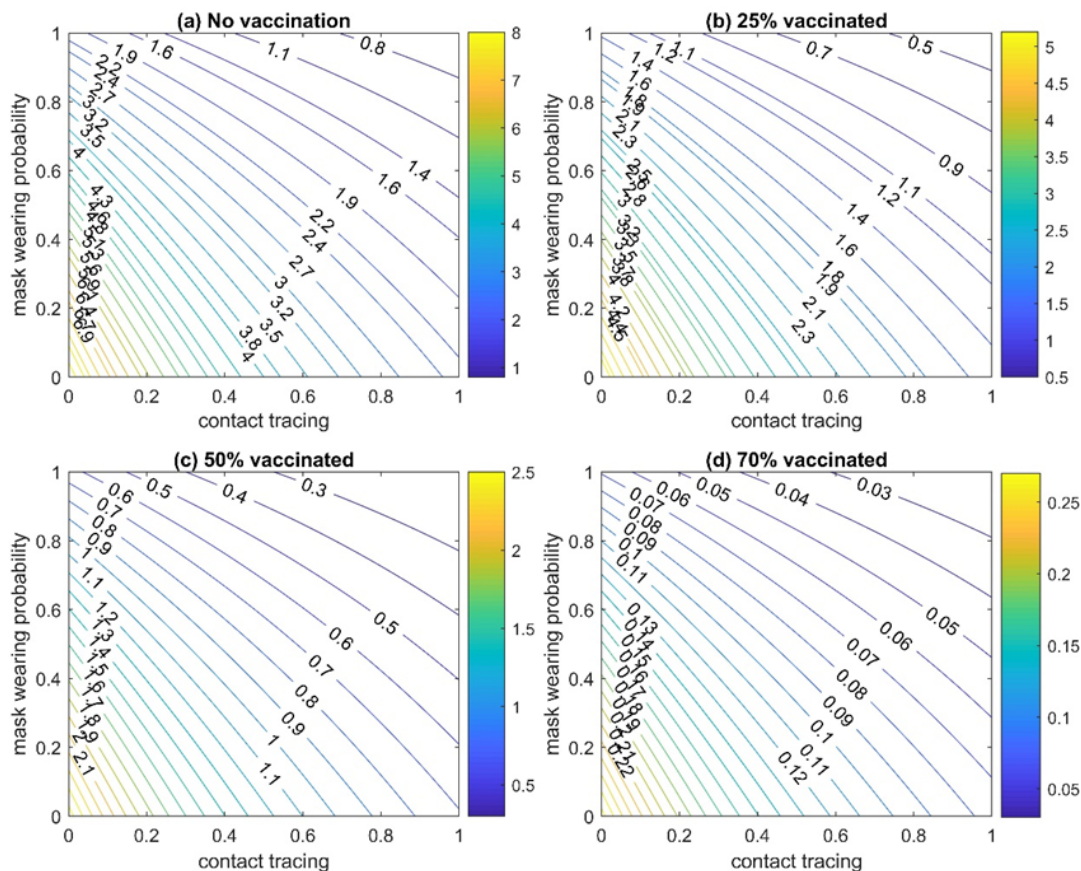
442 Figure 6 represents the dependence of the R_0 on the mask-wearing and contact tracing
443 probabilities but without consideration of any mass gathering restrictions. In Figure 6, there are the
444 different proportions of vaccinated people by two doses, since from July to November 2021, the
445 proportion of the fully vaccinated population had increased from 1.2% to 50% [17,19]. From Figure
446 6a–b, it can be seen that the outbreak control ($R_0 < 1$) is impossible with 0–25% of vaccinated
447 people, even with perfect quality of mask-wearing and contact tracing. With a higher proportion of
448 vaccinated people, 50–75% (Figure 6c–d), the outbreak can be controlled, however, only with the
449 extremely high-level implementation of mask-wearing and contact tracing.



450

451 **Figure 6.** The basic reproduction number (R_0) estimation for Delta variant without mass gathering
452 restriction and with different proportion of vaccinated people by two doses: **(a)** 0%; **(b)** 25%; **(c)**
453 50%; **(d)** 70%.

454 Figure 7 demonstrates the R_0 estimation also for different proportions of vaccinated population
455 but with consideration of mass gathering restrictions along with mask-wearing and contact tracing. In
456 Figure 7, it can be seen that R_0 can be less than one (the outbreak is under control) for all different
457 considered percentages of vaccinated people (from 0% to 70%). For 0–25% of vaccinated people
458 (Figure 7a–b), the control of outbreak is possible only when mask-wearing and contact tracing are
459 realized more than 80%. Figure 7c shows that already with 50% of the vaccinated population, an
460 execution of mask-wearing and contact tracing on the medium level is enough to reach R_0 smaller
461 than one. In Figure 7d, the outbreak is controlled even without mask-wearing and contact tracing.
462 Note, Figures 6–7 present the results for the Delta variant. As it will be shown further, for the
463 Omicron variant outbreak control, higher proportions of the vaccinated population together with the
464 booster vaccine program are needed.



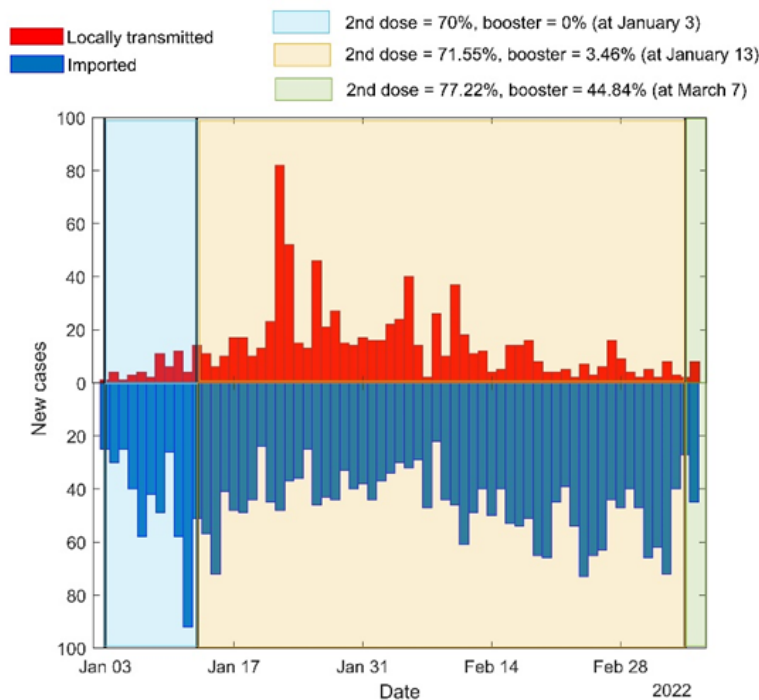
465

466 **Figure 7.** The basic reproduction number (R_0) estimation for Delta variant with strong mass
467 gathering restriction and with different proportion of vaccinated people by two doses: (a) 0%; (b)
468 25%; (c) 50%; (d) 70%.

469 **3.4. January–March 2022 (Omicron variant)**

470 For January–March 2022, we estimated R_0 value with consideration of vaccination and some
471 restrictions on mass gathering (light and strict). The determination of light and strong restrictions can
472 be found in Section 2.2.3.

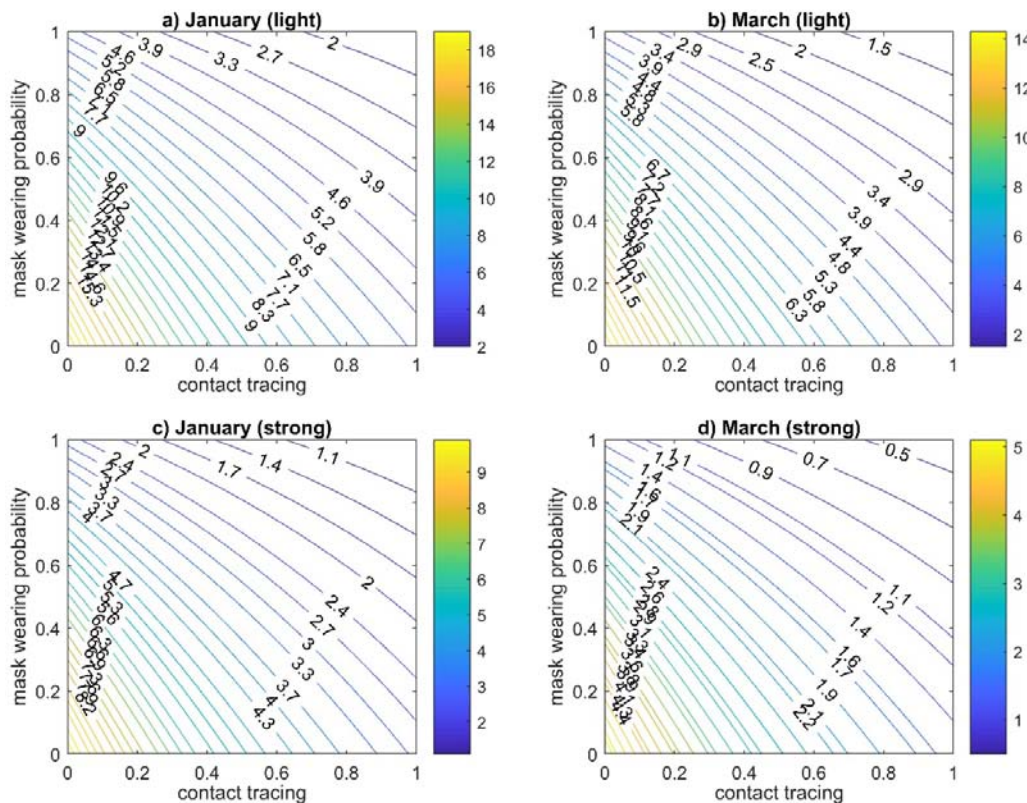
473 At the beginning of the 2022 year, the Omicron variant has already spread around the globe and
474 caused new COVID-19 outbreaks. However, during January–March 2022 period, Taiwan
475 demonstrated the capability to control Omicron's outbreak. The maximum number of local cases
476 amounted to 82 that happened at the end of January 2022, and the average value of new local cases
477 was around 20 cases per day (Figure 8).



478

479 **Figure 8.** Official number of local and imported cases during January–March 2022 with proportion
480 of vaccinated people at certain dates.

481 Estimation of was made for the beginning of January 2022 and for the beginning of March
482 2022, to show how a high level of vaccination together with other non-pharmaceutical interventions
483 can control the outbreak (Figure 9). For the beginning of January 2022, vaccinated people by two
484 doses were taken as 70% and by booster dose were taken as 0%. Since January 13, 71.55% is
485 vaccinated with second dose and 3.46% booster [19].



486

487 **Figure 9.** The basic reproduction number (R_0) estimation for January–March 2022 period (with
 488 consideration of asymptomatic cases): (a–b) January–March 2022 with small gathering restrictions;
 489 (c–d) January–March 2022 with strong gathering restrictions.

490 Figures 9a and 9c represent the R_0 estimation at the beginning of January for the different
 491 gathering restrictions efficiency: light restrictions with 15% efficiency (Figure 9a) and strong
 492 restrictions with 46% efficiency (Figure 9c). It can be seen that even with high proportion of
 493 mask-wearing (90%) and contact tracing (80–90%), R_0 is equal to or even higher than 1. In Figure
 494 9a, for $p = 0.9$ and $tr = 0.9$, $R_0 = 2.039$. In Figure 9c, for $p = 0.9$ and $tr = 0.9$, $R_0 = 1.058$.
 495 The obtained estimated values of R_0 can explain the growth in number of new local cases at the end
 496 of January (Figure 8).

497 Figures 9b and 9d shows estimation of R_0 values at the moment of March 7, 2022. Since the
 498 percentage of vaccinated people had been increased, especially vaccinated by booster dose (77.22%
 499 by two doses and 44.84% by booster) [17,19], this impacted the reduction of the R_0 values. In
 500 Figure 9b, for $p = 0.9$ and $tr = 0.9$, $R_0 = 1.529$. In Figure 9d, for $p = 0.9$ and $tr = 0.9$,
 501 $R_0 = 0.548$. The obtained results of R_0 during January–March 2022 can help to understand, how
 502 Taiwan was able to control the outbreak of the Omicron variant during this time. In addition, Figure
 503 9 demonstrates that any small relaxations can lead to an increase in cases number.

504 4. Discussion and Conclusions

505 The results of our simulation of the spread of COVID-19 in Taiwan during the 2020–2022 years

506 demonstrate that the improvement of a contact tracing program, the rapid implementation of
507 measures to isolate infected individuals and restrict mass gathering, the wearing of surgical masks by
508 90% of the population, and fast increasing of vaccinated people can help to eliminate the local spread
509 of the virus. However, it should be noted that only with the stable and careful implementation of all
510 these interventions the estimated R_0 can drop below one, which indicates the prevention of the
511 spread of the virus. For example, even in areas with few confirmed cases, people should continue
512 to wear masks not only where it is mandatory but in any public place. The results also indicate that
513 for the outbreak control over new appearing COVID-19 variant, the interventions that were not
514 considered during the previous COVID-19 variant, need to be involved. Moreover, to control
515 outbreaks of the Delta or Omicron variants without very strict mass gathering restrictions, it is
516 necessary to consistently increase the proportion of the vaccinated population. The vaccination
517 program should also be improved with time, for example, by including booster dose or revaccination.

518 In this work, we examined the handling of COVID-19 in Taiwan during 2020–2021 years to
519 determine the best practices to help controlling of the virus spread before pharmaceutical
520 interventions (vaccines) are available. Contact tracing, the wearing of masks, fast time of isolation,
521 and mass gathering restrictions are effective tools but the majority of a population must be on board.
522 This includes residents, who must observe measures and consistently wear a mask, as well as the
523 government, which should introduce and facilitate transmission control measures and develop further
524 strategies to address the pandemic.

525 In addition, in the current study, the estimation of the R_0 was made for Taiwan during the
526 January–March of the 2022 year. For this period, the vaccination has been already started to be one
527 of the most important interventions such as mask-wearing and contact tracing. Only for three months
528 (from January to March), the number of people vaccinated by a booster dose has been increased by
529 more than 40% [17,19].

530 Universal access to masks and contact tracing to control transmission from symptomatic and
531 asymptomatic individuals may reduce the number of COVID-19 infections. This is important since
532 drastic interventions such as the lockdown of cities or countries or social distancing, while proven
533 relatively effective to control the spread of COVID-19, are unsustainable in the long-term due to
534 high social and economic costs. One recent study gives strong support for maintaining mask-wearing
535 until and after achieving vaccination since using face masks can be cost-effective and cost-saving
536 [78]. The Omicron variant emergence and the possible new variants in the future that can be more
537 transmissible and reduce vaccine efficiency only increases the value and efficiency of mask-wearing.

538 When countries gradually return to normal life from lockdown, it is essential to understand the
539 effectiveness of less intrusive, more sustainable interventions, such as wearing a mask, contact
540 tracing program, and some mass gathering restrictions as measures of source control even in places
541 where COVID-19 vaccines are being involved [79].

542 Several early COVID-19 modeling studies examined the effect of lockdowns and physical
543 distancing measures implemented in Wuhan, China. However, in 2020, several countries, including
544 Taiwan, South Korea, Singapore, and Japan, have contained local transmission without drastic
545 measures such as lockdowns and shelter-in-place orders, suggesting that if conventional transmission
546 control measures are thoroughly implemented, an outbreak can be contained. At the beginning of
547 2022, Taiwan did not introduce strong mass gathering restrictions (as it was during May–July of
548 2021) but mask-wearing, contact tracing together with vaccination programs try to be kept at a high
549 implementation level.

550 At the end of March 2022, Taiwan started to change its “zero COVID-19” policy to the new
551 strategy. Some restrictions started to relax from March 2022. The new COVID-19 policy is no longer
552 focused on the total termination of the outbreak but it is still oriented to encourage people for taking
553 booster dose, to save the public’s ability to remain watchful, and take necessary measures to protect
554 their health [80]. The new Taiwanese model is also oriented to reduce the burden on the medical
555 system and maintain a normal life [80,81]. The priorities shift was caused by the fact that most of the
556 cases (99.6%) in the 2022 year have mild or no symptoms [81].

557 Despite this new COVID-19 policy, Taiwan still continues to maintain mandatory mask-wearing,
558 and, as of 11 April 2022, around 80% of the population had two vaccine doses while more than 50%
559 had the booster dose [17,19].

560 Our findings are relevant for health authorities because they provide quantitative estimates of
561 the effectiveness of both strict and light interventions. Continuation of the mandatory mask-wearing
562 in Taiwan is consistent with our obtained results. Despite the vaccination, non-pharmaceutical
563 interventions such as mask-wearing and contact tracing can play an important role. However, the
564 effect of universal access to face masks as well as of contact tracing programs varies by country
565 because of the highly individual nature of population behavior and recent country experience of
566 struggle with some viruses.

567 **5. Limitations**

568 This study has some limitations. We used some assumptions for different parameter values since
569 few parameters are very difficult to estimate. While there has been no forced lockdown, mandated
570 social distancing, or obligatory cancellation of events in Taiwan, people have taken many voluntary
571 protective measures due to fear of infection. It is uncertain whether, when life returns to normal and
572 people become less cautious and fearful, mask-wearing will remain effective.

573 **Acknowledgments**

574 This research was funded by the National Health Research Institutes, Taiwan, grant number
575 BN-109-PP-08, and the Ministry of Science and Technology, Taiwan, grant number MOST 106 2115
576 M 400 001. The funder has no role in study design, data collection and analysis, decision to publish,
577 or preparation of the manuscript.

578 **Conflict of interest**

579 The authors declare there is no conflict of interest.

580 **References**

- 581 1. *World Health Organization*, Summary of probable SARS cases with onset of illness from 1
582 November 2002 to 31 July 2003. Based on data as of the 31 December 2003. Available from:
583 [https://www.who.int/publications/m/item/summary-of-probable-sars-cases-with-onset-of-illness-](https://www.who.int/publications/m/item/summary-of-probable-sars-cases-with-onset-of-illness-from-1-november-2002-to-31-july-2003)
584 [from-1-november-2002-to-31-july-2003](https://www.who.int/publications/m/item/summary-of-probable-sars-cases-with-onset-of-illness-from-1-november-2002-to-31-july-2003) (accessed on 22 January 2021).

- 585 2. W. Gao, M. Sanna, G. Huang, M. Hefler, M.-K. Tsai, C.-P. Wen, Examining Population Health
586 During the COVID-19 Pandemic: All-Cause, Pneumonia and Influenza, and Road Traffic Deaths
587 in Taiwan, *Ann. Intern. Med.*, **174** (2021), 880–882. <https://doi.org/10.7326%2FM20-7788>
- 588 3. C.J. Wang, C.Y. Ng, R.H. Brook, Response to COVID-19 in Taiwan: Big Data Analytics, New
589 Technology, and Proactive Testing, *JAMA*, **323** (2020), 1341–1342.
590 <https://doi.org/10.1001/jama.2020.3151>
- 591 4. *Ministry of Health and Welfare (Taiwan)*, Smart community transmission prevention. Available
592 from: <https://covid19.mohw.gov.tw/en/cp-4775-53739-206.html> (accessed on 22 January 2021).
- 593 5. *Ministry of Health and Welfare (Taiwan)*, The Taiwan Model for Combating COVID-19.
594 Available from: <https://www.mohw.gov.tw/cp-5055-58017-2.html> (accessed on 27 July 2021).
- 595 6. *Taiwan Centers for Disease Control*, CECC confirms 1 more indigenous COVID-19 case; a
596 contact of Case #765 confirmed to have COVID-19 and locations visited by Case #765 disclosed.
597 Available from:
598 <https://www.cdc.gov.tw/En/Bulletin/Detail/k72hT71KxrunjqeDZEnDKA?typeid=158> (accessed
599 on 27 July 2021).
- 600 7. *Taiwan Centers for Disease Control*, Cumulative total of 393 COVID-19 cases confirmed in
601 Taiwan; 114 patients released from isolation. Available from:
602 <https://www.cdc.gov.tw/En/Bulletin/Detail/vtkM0PwbB3VbaGiqq9gWPw?typeid=158>
603 (accessed on 27 July 2021).
- 604 8. *Ministry of Health and Welfare (Taiwan)*, Provide a steady supply of disease prevention supplies
605 to reassure society and the people. Available from:
606 <https://covid19.mohw.gov.tw/en/cp-4785-53788-206.html> (accessed on 15 July 2022).
- 607 9. S.-W. Jian, H.-Y. Cheng, X.-T. Huang, D.-P. Liu, Contact tracing with digital assistance in
608 Taiwan's COVID-19 outbreak response, *Int. J. Infect. Dis.*, **101** (2020), 348–352.
- 609 10. *Taiwan Centers for Disease Control*, A decision support system for information integration of
610 zoonotic diseases. Available from:
611 [https://www.cdc.gov.tw/En/Professional/ProgramResultInfo/ppxd4Xu5zcYwclHniXKk6w?prog
612 ramResultId=nisMX3TKtOF927Af3KHKLg](https://www.cdc.gov.tw/En/Professional/ProgramResultInfo/ppxd4Xu5zcYwclHniXKk6w?programResultId=nisMX3TKtOF927Af3KHKLg) (accessed on 15 July 2022).
- 613 11. M.-Y. Yen, A.W.-H. Chiu, J. Schwartz, C.-C. King, Y.E. Lin, S.-C. Chang, et al. From SARS in
614 2003 to H1N1 in 2009: lessons learned from Taiwan in preparation for the next pandemic, *J. Hosp.
615 Infect.*, **87** (2014), 185–193. <https://doi.org/10.1016/j.jhin.2014.05.005>
- 616 12. *Taiwan Centers for Disease Control*, CECC raises epidemic warning to Level 3 nationwide from
617 May 19 to May 28; strengthened measures and restrictions introduced across Taiwan to reduce
618 community transmission. Available from:
619 https://www.cdc.gov.tw/En/Bulletin/Detail/VN_6yeoBTKhRkKoSy2d0hJQ?typeid=158
620 (accessed on 10 March 2022).
- 621 13. *Taiwan Centers for Disease Control*, CECC to lower epidemic alert level to Level 2 from July
622 27 to August 9; CECC urges public to continue following epidemic prevention and control
623 measures to protect health of people in Taiwan. Available from:
624 <https://www.cdc.gov.tw/En/Bulletin/Detail/C-9A7siqyLWscA5Qb6npkA?typeid=158> (accessed
625 on 10 February 2022).
- 626 14. *Taiwan Centers for Disease Control*, Nationwide epidemic alert to remain at Level 2 from
627 August 24 to September 6; CECC urges public to continue following epidemic prevention and
628 control measures to protect health of community. Available from:

- 629 [https://www.cdc.gov.tw/En/Category/ListContent/tov1jahKUv8RGSbvmzLwFg?uaid=C-BcduA](https://www.cdc.gov.tw/En/Category/ListContent/tov1jahKUv8RGSbvmzLwFg?uaid=C-BcduAEwDoDKg8WkY37Ig)
630 [EwDoDKg8WkY37Ig](https://www.cdc.gov.tw/En/Category/ListContent/tov1jahKUv8RGSbvmzLwFg?uaid=C-BcduAEwDoDKg8WkY37Ig) (accessed on 10 March 2022).
- 631 15. *Taiwan Centers for Disease Control*, Nationwide epidemic alert to remain at Level 2 from
632 October 5 to October 18; CECC adjusts related measures and urges public to continue following
633 epidemic prevention and control measures. Available from:
634 [https://www.cdc.gov.tw/En/Category/ListContent/tov1jahKUv8RGSbvmzLwFg?uaid=RaJ8pvE](https://www.cdc.gov.tw/En/Category/ListContent/tov1jahKUv8RGSbvmzLwFg?uaid=RaJ8pvE5WzR1IT2GRNpVhQ)
635 [5WzR1IT2GRNpVhQ](https://www.cdc.gov.tw/En/Category/ListContent/tov1jahKUv8RGSbvmzLwFg?uaid=RaJ8pvE5WzR1IT2GRNpVhQ) (accessed on 10 March 2022).
- 636 16. *Taiwan Centers for Disease Control*, Taiwan to start COVID-19 vaccination with AstraZeneca
637 vaccine on March 22. Available from:
638 <https://www.cdc.gov.tw/En/Bulletin/Detail/D8qwURN9F8430bMmOxGPJA?typeid=158>
639 (accessed on 27 July 2021).
- 640 17. *Our World in Data*, Coronavirus (COVID-19) Vaccinations. Available from:
641 <https://ourworldindata.org/covid-vaccinations?country=TWN> (accessed on 11 April 2022).
- 642 18. N. Andrews, J. Stowe, F. Kirsebom, S. Toffa, T. Rickeard, E. Gallagher, et al. Covid-19 Vaccine
643 Effectiveness against the Omicron (B.1.1.529) Variant, *N. Engl. J. Med.*, **386** (2022), 1532–1546.
644 <https://doi.org/10.1056/nejmoa2119451>
- 645 19. *Taiwan Centers for Disease Control*, COVID-19 vaccine statistics. Available from:
646 <https://www.cdc.gov.tw/Category/Page/9jFXNbCe-sFK9EImRRi2Og> (accessed on 11 April
647 2022).
- 648 20. J.L. Bernal, N. Andrews, C. Gower, E. Gallagher, R. Simmons, S. Thelwall, et al. Effectiveness
649 of Covid-19 Vaccines against the B.1.617.2 (Delta) Variant, *N. Engl. J. Med.*, **385** (2021),
650 585–594. <https://doi.org/10.1056/nejmoa2108891>
- 651 21. P. Tang, M.R. Hasan, H. Chemaitelly, H.M. Yassine, F.M. Benslimane, H.A. Al Khatib, et al.
652 NT162b2 and mRNA-1273 COVID-19 vaccine effectiveness against the SARS-CoV-2 Delta
653 variant in Qatar, *Nat. Med.*, **27** (2021), 2136–2143. <https://doi.org/10.1038/s41591-021-01583-4>
- 654 22. *Centers for Disease Control and Prevention*, COVID-19 Incidence and Death Rates Among
655 Unvaccinated and Fully Vaccinated Adults with and Without Booster Doses During Periods of
656 Delta and Omicron Variant Emergence — 25 U.S. Jurisdictions, April 4–December 25, 2021.
657 Available from:
658 https://www.cdc.gov/mmwr/volumes/71/wr/mm7104e2.htm?s_cid=mm7104e2_w (accessed on
659 10 March 2022).
- 660 23. *Centers for Disease Control and Prevention*, Effectiveness of a Third Dose of mRNA Vaccines
661 Against COVID-19–Associated Emergency Department and Urgent Care Encounters and
662 Hospitalizations Among Adults During Periods of Delta and Omicron Variant Predominance —
663 VISION Network, 10 States, August 2021–January 2022. Available from:
664 https://www.cdc.gov/mmwr/volumes/71/wr/mm7104e3.htm?s_cid=mm7104e3_w (accessed on
665 10 March 2022).
- 666 24. *Taiwan Centers for Disease Control*, Nationwide epidemic alert to remain at Level 2 from
667 January 25 to February 7; CECC makes adjustments to related measures and urges public to
668 follow epidemic prevention and control measures to safeguard epidemic prevention efforts in
669 community. Available from:
670 <https://www.cdc.gov.tw/En/Bulletin/Detail/8jgcRSSSt4QMMe0exmwrxBg?typeid=158> (accessed
671 on 10 March 2022).

- 672 25. J.T. Wu, K. Leung, G.M. Leung, Nowcasting and forecasting the potential domestic and
673 international spread of the 2019-nCoV outbreak originating in Wuhan, China: a modelling study,
674 *Lancet* **395** (2020), 689–697. [https://doi.org/10.1016/s0140-6736\(20\)30260-9](https://doi.org/10.1016/s0140-6736(20)30260-9)
- 675 26. C. Browne, H. Gulbudak, G. Webb, Modeling Contact Tracing in Outbreaks with Application to
676 Ebola, *J. Theor. Biol.*, **384** (2015), 33–49. <https://doi.org/10.1016/j.jtbi.2015.08.004>
- 677 27. K.C. Chong, B.C.Y. Zee, Modeling the impact of air, sea, and land travel restrictions
678 supplemented by other interventions on the emergence of a new influenza pandemic virus, *BMC*
679 *Infect. Dis.*, **12** (2012), 309. <https://doi.org/10.1186/1471-2334-12-309>
- 680 28. X. Wang, S. Wang, Y. Lan, X. Tao, J. Xiao, The impact of asymptomatic individuals on the
681 strength of public health interventions to prevent the second outbreak of COVID-19, *Nonlinear*
682 *Dyn.*, **101** (2020), 2003–2012. <https://doi.org/10.1007%2Fs11071-020-05736-x>
- 683 29. J.A.M. Gondim, Preventing epidemics by wearing masks: An application to COVID-19, *Chaos*
684 *Solit. Fractals*, **143** (2021), 110599. <https://doi.org/10.1016/j.chaos.2020.110599>
- 685 30. A. Nuzzo, C.O. Tan, R. Raskar, D.C. DeSimone, S. Kapa, R. Gupta, Universal Shelter-in-Place
686 Versus Advanced Automated Contact Tracing and Targeted Isolation: A Case for 21st-Century
687 Technologies for SARS-CoV-2 and Future Pandemics, *Mayo Clin. Proc.*, **95** (2020), 1898–1905.
688 <https://doi.org/10.1016/j.mayocp.2020.06.027>
- 689 31. S.E. Eikenberry, M. Mancuso, E. Iboi, T. Phan, K. Eikenberry, Y. Kuang, et al. To mask or not to
690 mask: Modeling the potential for face mask use by the general public to curtail the COVID-19
691 pandemic, *Infect. Dis. Model.*, **5** (2020), 293–308. <https://doi.org/10.1016/j.idm.2020.04.001>
- 692 32. O. Diekmann, J.A.P. Heesterbeek, J.A.J. Metz, On the definition and computation of the basic
693 reproduction ratio R_0 in models for infectious diseases in heterogeneous populations, *J. Math.*
694 *Biol.*, **28** (1990), 365–382. <https://doi.org/10.1007/BF00178324>
- 695 33. O. Diekmann, J.A.P. Heesterbeek, M.G. Roberts, The construction of next-generation matrices
696 for compartmental epidemic models, *J. R. Soc. Interface*, **7** (2010), 873–885.
697 <https://doi.org/10.1098/rsif.2009.0386>
- 698 34. H.-Y. Cheng, S.-W. Jian, D.-P. Liu, T.-C. Ng, W.-T. Huang, H.-H. Lin, Contact Tracing
699 Assessment of COVID-19 Transmission Dynamics in Taiwan and Risk at Different Exposure
700 Periods Before and After Symptom Onset, *JAMA Intern. Med.*, **180** (2020), 1156–1163.
701 <https://doi.org/10.1001/jamainternmed.2020.2020>
- 702 35. J.T. Brooks, J.C. Butler, Effectiveness of Mask Wearing to Control Community Spread of
703 SARS-CoV-2, *JAMA*, **325** (2021), 998–999. <https://doi.org/10.1001/jama.2021.1505>
- 704 36. J. Howard, A. Huang, Z. Li, Z. Tufekci, V. Zdimal, H.-M. van der Westhuizen, et al. An evidence
705 review of face masks against COVID-19, *PNAS*, **118** (2021), e2014564118.
706 <https://doi.org/10.1073/pnas.2014564118>
- 707 37. Y. Cheng, N. Ma, C. Witt, S. Rapp, P.S. Wild, M.O. Andreae, et al. Face masks effectively limit
708 the probability of SARS-CoV-2 transmission, *Science*, **372** (2021), 1439–1443.
709 <https://doi.org/10.1126/science.abg6296>
- 710 38. P. Anfinrud, C.E. Bax, V. Stadnytskyi, A. Bax, Could SARS-CoV-2 be transmitted via speech
711 droplets? preprint, medRxiv: <https://doi.org/10.1101%2F2020.04.02.20051177>
- 712 39. *Bauhaus-University, Weimar*, Visualization of air spread when coughing. Available from:
713 <https://youtu.be/MX8InIv0sXs> (accessed on 22 January 2021).
- 714 40. *Centers for Disease Control and Prevention*, Use and Care of Masks. Wear a mask with the best
715 fit, protection, and comfort for you. Available from:

- 716 [https://www.cdc.gov/coronavirus/2019-ncov/prevent-getting-sick/cloth-face-cover-guidance.htm](https://www.cdc.gov/coronavirus/2019-ncov/prevent-getting-sick/cloth-face-cover-guidance.html)
717 [l](#) (accessed on 22 January 2021).
- 718 41. *Centers for Disease Control and Prevention*, Scientific Brief: Community Use of Cloth Masks to
719 Control the Spread of SARS-CoV-2. Available from:
720 [https://www.cdc.gov/coronavirus/2019-ncov/more/masking-science-sars-cov2.html?fbclid=IwA](https://www.cdc.gov/coronavirus/2019-ncov/more/masking-science-sars-cov2.html?fbclid=IwAR28PppCa6x2uxwO8Z2baHMOKHS4JXx0inzMQs3zRHV1qql_0a8mxZfpCw)
721 [R28PppCa6x2uxwO8Z2baHMOKHS4JXx0inzMQs3zRHV1qql_0a8mxZfpCw](#) (accessed on 22
722 January 2021).
- 723 42. *European Centre for Disease Prevention and Control*, Using face masks in the community: first
724 update. Available from:
725 [https://www.ecdc.europa.eu/sites/default/files/documents/covid-19-face-masks-community-first-](https://www.ecdc.europa.eu/sites/default/files/documents/covid-19-face-masks-community-first-update.pdf)
726 [update.pdf](#) (accessed on 15 March 2021).
- 727 43. S. Rengasamy, B. Eimer, R.E. Shaffer, Simple respiratory protection—evaluation of the filtration
728 performance of cloth masks and common fabric materials against 20–1000 nm size particles,
729 *Ann. Occup. Hyg.*, **54** (2010), 789–798. <https://doi.org/10.1093/annhyg/meq044>
- 730 44. A. Davies, K.-A. Thompson, K. Giri, G. Kafatos, J. Walker, A. Bennett, Testing the efficacy of
731 homemade masks: would they protect in an influenza pandemic? *Disaster Med. Public Health*
732 *Prep.*, **7** (2013), 413–418. <https://doi.org/10.1017%2Fdmp.2013.43>
- 733 45. N.H.L. Leung, D.K.W. Chu, E.Y.C. Shiu, K.-H. Chan, J.J. McDevitt, B.J.P. Hau, et al.
734 Respiratory virus shedding in exhaled breath and efficacy of face masks, *Nat. Med.*, **26** (2020),
735 676–680. <https://doi.org/10.1038/s41591-020-0843-2>
- 736 46. C.R. MacIntyre, S. Cauchemez, D.E. Dwyer, H. Seale, P. Cheung, G. Browne, et al. Face mask
737 use and control of respiratory virus transmission in households, *Emerg. Infect. Dis.*, **15** (2009),
738 233–241. <https://doi.org/10.3201%2Fcid1502.081167>
- 739 47. *Centers for Disease Control and Prevention*, COVID-19 pandemic planning scenarios. Available
740 from: <https://www.cdc.gov/coronavirus/2019-ncov/hcp/planning-scenarios.html#definitions>
741 (accessed on July 27 2021).
- 742 48. X. He, E.H.Y. Lau, P. Wu, X. Deng, J. Wang, X. Hao, et al. Temporal dynamics in viral shedding
743 and transmissibility of COVID-19, *Nat. Med.*, **26** (2020), 672–675.
744 <https://doi.org/10.1038/s41591-020-0869-5>
- 745 49. He, W.; Yi, G.Y.; Zhu, Y. Estimation of the basic reproduction number, average incubation time,
746 asymptomatic infection rate, and case fatality rate for COVID-19: Meta-analysis and sensitivity
747 analysis. *J. Med. Virol.* 2020, **92**, 2543–2550.
- 748 50. Y. Bai, L. Yao, T. Wei, F. Tian, D.-Y. Jin, L. Chen, et al. Presumed asymptomatic carrier
749 transmission of COVID-19, *JAMA*, **323** (2020), 1406–1407.
750 <https://doi.org/10.1001/jama.2020.2565>
- 751 51. W.-J. Guan, Z.-Y. Ni, Y. Hu, W.-H. Liang, C.-Q. Ou, J.-X. He, et al. Clinical characteristics of
752 coronavirus disease 2019 in China, *N. Engl. J. Med.*, **382** (2020), 1708–1720. DOI:
753 10.1056/NEJMoa2002032
- 754 52. D. He, S. Zhao, Q. Lin, Z. Zhuang, P. Cao, M.H. Wang, et al. The relative transmissibility of
755 asymptomatic COVID-19 infections among close contacts, *Int. J. Infect. Dis.*, **94** (2020),
756 145–147. <https://doi.org/10.1016/j.ijid.2020.04.034>

- 757 53. Ministry of Health and Welfare (Taiwan). Good etiquette of citizen. Available from:
758 <https://covid19.mohw.gov.tw/en/cp-4867-53763-206.html> (accessed on 22 January 2021).
- 759 54. R. Li, S. Pei, B. Chen, Y. Song, T. Zhang, W. Yang, et al. Substantial undocumented infection
760 facilitates the rapid dissemination of novel coronavirus (SARS-CoV2), *Science*, **368** (2020),
761 489–493. <https://doi.org/10.1126/science.abb3221>
- 762 55. M. Shen, Z. Peng, Y. Xiao, L. Zhang, Modelling the epidemic trend of the 2019 novel
763 coronavirus outbreak in China, *Innovation (N Y)*, **1** (2020), 100048.
764 <https://doi.org/10.1016/j.xinn.2020.100048>
- 765 56. L.-T. Liu, J.-J. Tsai, K. Chang, C.-H. Chen, P.-C. Lin, C.-Y. Tsai, et al. Identification and
766 Analysis of SARS-CoV-2 Alpha Variants in the Largest Taiwan COVID-19 Outbreak in 2021,
767 *Front. Med.*, **9** (2022), 869818. <https://doi.org/10.3389/fmed.2022.869818>
- 768 57. H. Fort, A very simple model to account for the rapid rise of the alpha variant of SARS-CoV-2 in
769 several countries and the world, *Virus Res.*, **304** (2021), 198531.
770 <https://doi.org/10.1016/j.virusres.2021.198531>
- 771 58. N.G. Davies, S. Abbott, R.C. Barnard, C.I. Jarvis, A.J. Kucharski, J.D. Munday, et al. Estimated
772 transmissibility and impact of SARS-CoV-2 lineage B.1.1.7 in England, *Science*, **372** (2021),
773 eabg3055. <https://doi.org/10.1126/science.abg3055>
- 774 59. J.W. Tang, P.A. Tambyah, D.S.C. Hui, Emergence of a new SARS-CoV-2 variant in the UK, *J.*
775 *Infect.*, **82** (2021), e27–e28. <https://doi.org/10.1016/j.jinf.2020.12.024>
- 776 60. T.Y. Michaelsen, M. Bennedbæk, L.E. Christiansen, M.S.F. Jørgensen, C.H. Møller, E.A.
777 Sørensen, et al. Introduction and transmission of SARS-CoV-2 lineage B.1.1.7, Alpha variant, in
778 Denmark, *Genome. Med.*, **14** (2022). <https://doi.org/10.1186/s13073-022-01045-7>
- 779 61. Mark S Graham, Carole H Sudre, Anna May, Michela Antonelli, Benjamin Murray, Thomas
780 Varsavsky, Changes in symptomatology, reinfection, and transmissibility associated with the
781 SARS-CoV-2 variant B.1.1.7: an ecological study, *The Lancet Public Health*, **6** (2021),
782 e335–e345. [https://doi.org/10.1016/S2468-2667\(21\)00055-4](https://doi.org/10.1016/S2468-2667(21)00055-4)
- 783 62. Consensus statement from the Scientific Pandemic Influenza Group on Modelling, Operational
784 sub-group (SPIN-M-O) for the Scientific Advisory Group for Emergencies (SAGE), SPI-M-O:
785 Consensus statement on COVID-19, 3 June 2021. Available from:
786 [https://www.gov.uk/government/publications/spi-m-o-consensus-statement-on-covid-19-3-june-](https://www.gov.uk/government/publications/spi-m-o-consensus-statement-on-covid-19-3-june-2021)
787 [2021](https://www.gov.uk/government/publications/spi-m-o-consensus-statement-on-covid-19-3-june-2021) (accessed on 10 February 2022).
- 788 63. M.T. Sofonea, B. Roquebert, V. Foulongne, D. Morquin, L. Verdurme, S. Trombert-Paolantoni, et al.
789 Analyzing and Modeling the Spread of SARS-CoV-2 Omicron Lineages BA.1 and BA.2,
790 France, September 2021–February 2022, *Emerg. Infect. Dis.*, **28** (2022), 1355–1365.
791 <https://doi.org/10.3201/eid2807.220033>
- 792 64. J. Brainard, C.M. Grossi Sampedro, A. Sweeting, R. Fordham, Was Alpha deadlier than wild-type
793 COVID? Analysis in rural England, *Infection* (2022).
794 <https://doi.org/10.1007/s15010-022-01787-x>
- 795 65. C.S. Kow, H.A. Merchant, S.S. Hasan, Mortality risk in patients infected with SARS-CoV-2 of
796 the lineage B.1.1.7 in the UK, *J. Infect.*, **83** (2021), e14–e15.
797 <https://doi.org/10.1016/j.jinf.2021.05.008>
- 798 66. L. Lin, Y. Liu, X. Tang, D. He, The disease severity and clinical outcomes of the SARS-CoV-2
799 variants of concern, *Front. Public Health*, **9** (2021), 775224.
800 <https://doi.org/10.3389/fpubh.2021.775224>

- 801 67. A. Sigal, R. Milo, W. Jassat, Estimating disease severity of Omicron and Delta SARS-CoV-2
802 infections, *Nat. Rev. Immunol.*, **22** (2022), 267–269. <https://doi.org/10.1038/s41577-022-00720-5>
- 803 68. J.A. Backer, D. Klinkenberg, J. Wallinga, Incubation period of 2019 novel coronavirus
804 (2019-nCoV) infections among travellers from Wuhan, China, 20–28 January 2020, *Euro*
805 *Surveill.*, **25** (2020), 2000062. <https://doi.org/10.2807/1560-7917.es.2020.25.5.2000062>
- 806 69. L. Jansen, B. Tegomoh, K. Lange, K. Showalter, J. Figliomeni, B. Abdalhamid, et al.
807 Investigation of a SARS-CoV-2 B.1.1.529 (Omicron) Variant Cluster — Nebraska,
808 November–December 2021, *MMWR Morb. Mortal Wkly Rep.*, **70** (2021), 1782–1784.
809 <https://doi.org/10.15585/mmwr.mm705152e3>
- 810 70. C.A. Donnelly, A.C. Ghani, G.M. Leung, A.J. Hedley, C. Fraser, S. Riley, et al. Epidemiological
811 determinants of spread of causal agent of severe acute respiratory syndrome in Hong Kong,
812 *Lancet* **361** (2003), 1761–1766. [https://doi.org/10.1016/s0140-6736\(03\)13410-1](https://doi.org/10.1016/s0140-6736(03)13410-1)
- 813 71. N.M. Linton, T. Kobayashi, Y. Yang, K. Hayashi, A.R. Akhmetzhanov, S.-M. Jung, et al.
814 Incubation period and other epidemiological characteristics of 2019 novel coronavirus infections
815 with right truncation: a statistical analysis of publicly available case data, *J. Clin. Med.*, **9** (2020),
816 538. <https://doi.org/10.3390/jcm9020538>
- 817 72. *Taiwan Centers for Disease Control*, CECC raises epidemic alert level for Taipei City and New
818 Taipei City to Level 3 and strengthens national restrictions and measures, effective from May 15
819 to May 28, in response to increasing level of community transmission. Available from:
820 <https://www.cdc.gov.tw/En/Bulletin/Detail/R1K7gSjoYa7Wojk54nW7fg?typeid=158> (accessed
821 on 27 July 2021).
- 822 73. M.-Y. Yen, Y.-F. Yen, S.-Y. Chen, T.-I. Lee, K.-H. Huang, T.-C. Chan, et al. Learning from the
823 past: Taiwan’s responses to COVID-19 versus SARS, *Int. J. Infect. Dis.*, **110** (2021), 469–478.
824 <https://doi.org/10.1016/j.ijid.2021.06.002>
- 825 74. *World Health Organization*, Key planning recommendations for mass gatherings in the context
826 of COVID-19. Available from: <https://www.who.int/publications/i/item/10665-332235> (accessed
827 on 10 February 2022).
- 828 75. *Taiwan Centers for Disease Control*, Nationwide epidemic alert to remain at Level 2 from
829 February 8 to 28; CECC urges public to follow epidemic prevention and control measures to
830 safeguard epidemic prevention efforts in community. Available from:
831 <https://www.cdc.gov.tw/En/Bulletin/Detail/PDF-lvQ59qfK-BpniZcfa?typeid=158> (accessed on
832 10 February 2022).
- 833 76. T. Filonets, M. Solovchuk, W. Gao, T.W.-H. Sheu, Investigation of the Efficiency of Mask
834 Wearing, Contact Tracing, and Case Isolation during the COVID-19 Outbreak, *J. Clin. Med.*, **10**
835 (2021), 2761. <https://doi.org/10.3390/jcm10132761>
- 836 77. *Statista*, Frequency of wearing face masks when going out during coronavirus COVID-19
837 outbreak among students in Taiwan as of April 2020. Available from:
838 <https://www.statista.com/statistics/1130616/taiwan-covid-19-impact-on-wearing-face-masks-among-students/>
839 (accessed on 10 February 2022).
- 840 78. S.M. Bartsch, K.J. O’Shea, K.L. Chin, U. Strych, M.C. Ferguson, M.E. Bottazzi, et al.
841 Maintaining face mask use before and after achieving different COVID-19 vaccination coverage
842 levels: a modelling study, *Lancet Public Health*, **7** (2022), e356–e365.
843 [https://doi.org/10.1016/s2468-2667\(22\)00040-8](https://doi.org/10.1016/s2468-2667(22)00040-8)

-
- 844 79. S. Moore, E.M. Hill, M.J. Tildesley, L. Dyson, M.J. Keeling, Vaccination and
845 non-pharmaceutical interventions for COVID-19: a mathematical modelling study, *Lancet Infect.*
846 *Dis.*, **21** (2021), 793–802. [https://doi.org/10.1016/S1473-3099\(21\)00143-2](https://doi.org/10.1016/S1473-3099(21)00143-2)
- 847 80. *Taiwan Centers for Disease Control*, From April 1–30, current mask mandate and other
848 epidemic prevention measures to remain in place, and epidemic prevention rules for certain
849 leisure and entertainment venues to be enhanced. Available from:
850 <https://www.cdc.gov.tw/En/Bulletin/Detail/QGqFFcQy-nato7MrRX39Q?typeid=158> (accessed
851 on 30 March 2022).
- 852 81. *Taiwan Centers for Disease Control*, Principles for admission and treatment of mild and severe
853 COVID-19 cases adjusted effectively from today. Available from:
854 <https://www.cdc.gov.tw/En/Bulletin/Detail/wb2fT-apsntUBRI7Oc1cNA?typeid=158> (accessed
855 on 14 April 2022).
- 856 82. Z. Yuan, Y. Xiao, Z. Dai, J. Huang, Z. Zhang, Y. Chen, Modelling the effects of Wuhan’s
857 lockdown during COVID-19, China, *Bull. World Health Organ.*, **98** (2020), 484–494.
858 <https://doi.org/10.2471/BLT.20.254045>
- 859 83. *Ministry of Health and Welfare (Taiwan)*, Adequate testing capacity and precisely locate
860 potentially infected individuals. Available from:
861 <https://covid19.mohw.gov.tw/en/cp-4788-53906-206.html> (accessed on 27 July 2021).