

Supplementary Online Content

Mid-life leukocyte telomere length and dementia risk: a prospective cohort study of 435,046 UK Biobank participants

Supplement 2

eTable 1 | UKB field IDs and ICD-10 codes for identification of AD/ADRD

eTable 2 | A selection of UK Biobank cognitive tests

eTable 3 | Selected imaging derived phenotypes

eTable 4 | Baseline characteristics of participants in the baseline or imaging cohort

eTable 5 | Participant characteristics at baseline of incident AD/ADRD cases versus normal controls

eFigure 1 | Relationship between baseline leukocyte telomere length and incidence of AD/ADRD

eFigure 2 | Associations between genetically determined telomere length and AD/ADRD using the Inverse Variance Weighted (IVW) method

eFigure 3 | Associations between genetically determined telomere length and cognitive function using the Inverse Variance Weighted (IVW) method

eFigure 4 | Associations between genetically determined telomere length and volumetric IDPs of AD signatures and white matter hyperintensities (WMH) using the Inverse Variance Weighted (IVW) method

eFigure 5 | Associations between genetically determined telomere length and weighted-mean fractional anisotropy IDPs using the Inverse Variance Weighted (IVW) method

eFigure 6 | Associations between genetically determined telomere length and weighted-mean mean diffusivity IDPs using the Inverse Variance Weighted (IVW) method

eFigure 7 | Associations between genetically determined telomere length and AD/ADRD, comparing the primary (IVW: inverse variance weighted) to secondary MR methods (Mendelian randomization robust adjusted profile score (MR-RAPS); weighted median based method; MR-Egger method)

eFigure 8 | Associations between genetically determined telomere length and cognitive function, comparing the primary (IVW: inverse variance weighted) to secondary MR methods (Mendelian randomization robust adjusted profile score (MR-RAPS); weighted median based method; MR-Egger method)

eFigure 9 | Associations between genetically determined telomere length and volumetric IDPs of AD signatures and white matter hyperintensities (WMH), comparing the primary (IVW: inverse variance weighted) to secondary MR methods (Mendelian randomization robust adjusted profile score (MR-RAPS); weighted median based method; MR-Egger method)

eFigure 10 | Associations between genetically determined telomere length and weighted-mean fractional anisotropy IDPs, comparing the primary (IVW: inverse variance weighted) to secondary MR methods (Mendelian randomization robust adjusted profile score (MR-RAPS); weighted median based method; MR-Egger method)

eFigure 11 | Associations between genetically determined telomere length and weighted-mean mean diffusivity IDPs, comparing the primary (IVW: inverse variance weighted) to secondary MR methods (Mendelian randomization robust adjusted profile score (MR-RAPS); weighted median based method; MR-Egger method)

eTable 1. UKB field IDs and ICD-10 codes for identification of AD/ADRD

AD/ADRD	UKB field ID	ICD-10	Data release period currently available in England*
Alzheimer's disease (AD)	131036	G30	Death data: April 2006-February 2021
Dementia in AD	130836	F00	
Vascular dementia	130838	F01	Hospital inpatient data: 1997-March 2021 for half of the UKB cohort
Unspecified dementia	130842	F03	
Other degenerative diseases of nervous system, not elsewhere classified, including frontotemporal dementia and Lewy body's dementia	131038	G31	Primary care data: 1938-2017 Self-reported data: initial assessment visit (2006-2010), first repeat assessment visit (2012-2013), imaging visit (2014+), first repeat imaging visit (2019+)

*Data release period varied but similar for different countries in the United Kingdom; participants from England account for over 95% of the cohort.

eTable 2. A selection of UK Biobank cognitive tests

Cognitive domain	Cognitive test	Field ID	Baseline visit	First imaging visit	Web link
Processing speed	Reaction time	20023	G ✓		https://biobank.ndph.ox.ac.uk/s/howcase/field.cgi?id=20023
Working memory	Numeric memory	4282	G ✓		https://biobank.ndph.ox.ac.uk/s/howcase/field.cgi?id=4282
Verbal and numerical reasoning	Fluid intelligence	20016	G ✓		https://biobank.ndph.ox.ac.uk/s/howcase/field.cgi?id=20016
Prospective memory	Prospective memory	20018	G		https://biobank.ctsu.ox.ac.uk/crystal/field.cgi?id=20018
Visual declarative memory	Pairs matching	399	G		https://biobank.ndph.ox.ac.uk/s/howcase/field.cgi?id=399
Processing speed	Symbol digit substitution	23324		✓	https://biobank.ndph.ox.ac.uk/s/howcase/field.cgi?id=23324
Executive function	Trail making part B	6350		✓	https://biobank.ndph.ox.ac.uk/s/howcase/field.cgi?id=6350
Non-verbal reasoning	Matrix pattern completion	6373		✓	https://biobank.ndph.ox.ac.uk/s/howcase/field.cgi?id=6373

G: general cognitive ability element

eTable 3. Selected imaging derived phenotypes

Imaging derived phenotype (IDP)	UKB Field ID
Volume of hippocampus (from T1 brain image)	25019/25020
Volume of precuneus generated by parcellation of the white surface using Desikan-Killiany parcellation	26812/26913
Volume of cuneus generated by parcellation of the white surface using Desikan-Killiany parcellation	26792/26893
Volume of entorhinal generated by parcellation of the white surface using Desikan-Killiany parcellation	26793/26894
Volume of inferiorparietal generated by parcellation of the white surface using Desikan-Killiany parcellation	26795/26896
Volume of parahippocampal generated by parcellation of the white surface using Desikan-Killiany parcellation	26803/26904
Total volume of white matter hyperintensities (from T1 and T2_FLAIR images)	25781
Mean FA (fractional anisotropy) in anterior corona radiata on FA skeleton	25079/25078
Mean FA (fractional anisotropy) in anterior limb of internal capsule on FA skeleton	25073/25072
Mean FA (fractional anisotropy) in body of corpus callosum on FA skeleton	25059
Mean FA (fractional anisotropy) in cerebral peduncle on FA skeleton	25071/25070
Mean FA (fractional anisotropy) in cingulum cingulate gyrus on FA skeleton	25091/25090
Mean FA (fractional anisotropy) in cingulum hippocampus on FA skeleton	25093/25092
Mean FA (fractional anisotropy) in corticospinal tract on FA skeleton	25063/25062
Mean FA (fractional anisotropy) in external capsule on FA skeleton	25089/25088
Mean FA (fractional anisotropy) in fornix cres+stria terminalis on FA skeleton	25095/25094
Mean FA (fractional anisotropy) in fornix on FA skeleton	25061
Mean FA (fractional anisotropy) in genu of corpus callosum on FA skeleton	25058
Mean FA (fractional anisotropy) in inferior cerebellar peduncle on FA skeleton	25067/25066
Mean FA (fractional anisotropy) in medial lemniscus on FA skeleton	25065/25064
Mean FA (fractional anisotropy) in middle cerebellar peduncle on FA skeleton	25056
Mean FA (fractional anisotropy) in pontine crossing tract on FA skeleton	25057
Mean FA (fractional anisotropy) in posterior corona radiata on FA skeleton	25083/25082
Mean FA (fractional anisotropy) in posterior limb of internal capsule on FA skeleton	25075/25074
Mean FA (fractional anisotropy) in posterior thalamic radiation on FA skeleton	25085/25084
Mean FA (fractional anisotropy) in retrolenticular part of internal capsule on FA skeleton	25077/25076
Mean FA (fractional anisotropy) in sagittal stratum on FA skeleton	25087/25086
Mean FA (fractional anisotropy) in splenium of corpus callosum on FA skeleton	25060
Mean FA (fractional anisotropy) in superior cerebellar peduncle on FA skeleton	25069/25068
Mean FA (fractional anisotropy) in superior corona radiata on FA skeleton	25081/25080
Mean FA (fractional anisotropy) in superior fronto-occipital fasciculus on FA skeleton	25099/25098
Mean FA (fractional anisotropy) in superior longitudinal fasciculus on FA skeleton	25097/25096
Mean FA (fractional anisotropy) in tapetum on FA skeleton	25103/25102
Mean FA (fractional anisotropy) in uncinate fasciculus on FA skeleton	25101/25100
Mean MD (mean diffusivity) in anterior corona radiata on FA (fractional anisotropy) skeleton	25127/25126
Mean MD (mean diffusivity) in anterior limb of internal capsule on FA (fractional anisotropy) skeleton	25121/25120
Mean MD (mean diffusivity) in body of corpus callosum on FA (fractional anisotropy) skeleton	25107
Mean MD (mean diffusivity) in cerebral peduncle on FA (fractional anisotropy) skeleton	25119/25118
Mean MD (mean diffusivity) in cingulum cingulate gyrus on FA (fractional anisotropy) skeleton	25139/25138
Mean MD (mean diffusivity) in cingulum hippocampus on FA (fractional anisotropy) skeleton	25141/25140

Mean MD (mean diffusivity) in corticospinal tract on FA (fractional anisotropy) skeleton	25111/25110
Mean MD (mean diffusivity) in external capsule on FA (fractional anisotropy) skeleton	25137/25136
Mean MD (mean diffusivity) in fornix cres+stria terminalis on FA (fractional anisotropy) skeleton	25143/25142
Mean MD (mean diffusivity) in fornix on FA (fractional anisotropy) skeleton	25109
Mean MD (mean diffusivity) in genu of corpus callosum on FA (fractional anisotropy) skeleton	25106
Mean MD (mean diffusivity) in inferior cerebellar peduncle on FA (fractional anisotropy) skeleton	25115/25114
Mean MD (mean diffusivity) in medial lemniscus on FA (fractional anisotropy) skeleton	25113/25112
Mean MD (mean diffusivity) in middle cerebellar peduncle on FA (fractional anisotropy) skeleton	25104
Mean MD (mean diffusivity) in pontine crossing tract on FA (fractional anisotropy) skeleton	25105
Mean MD (mean diffusivity) in posterior corona radiata on FA (fractional anisotropy) skeleton	25131/25130
Mean MD (mean diffusivity) in posterior limb of internal capsule on FA (fractional anisotropy) skeleton	25123/25122
Mean MD (mean diffusivity) in posterior thalamic radiation on FA (fractional anisotropy) skeleton	25133/25132
Mean MD (mean diffusivity) in retrolenticular part of internal capsule on FA (fractional anisotropy) skeleton	25125/25124
Mean MD (mean diffusivity) in sagittal stratum on FA (fractional anisotropy) skeleton	25135/25134
Mean MD (mean diffusivity) in splenium of corpus callosum on FA (fractional anisotropy) skeleton	25108
Mean MD (mean diffusivity) in superior cerebellar peduncle on FA (fractional anisotropy) skeleton	25117/25116
Mean MD (mean diffusivity) in superior corona radiata on FA (fractional anisotropy) skeleton	25129/25128
Mean MD (mean diffusivity) in superior fronto-occipital fasciculus on FA (fractional anisotropy) skeleton	25147/25146
Mean MD (mean diffusivity) in superior longitudinal fasciculus on FA (fractional anisotropy) skeleton	25145/25144
Mean MD (mean diffusivity) in tapetum on FA (fractional anisotropy) skeleton	25151/25150
Mean MD (mean diffusivity) in uncinate fasciculus on FA (fractional anisotropy) skeleton	25149/25148

eTable 4 Baseline characteristics of participants in the baseline or imaging cohort

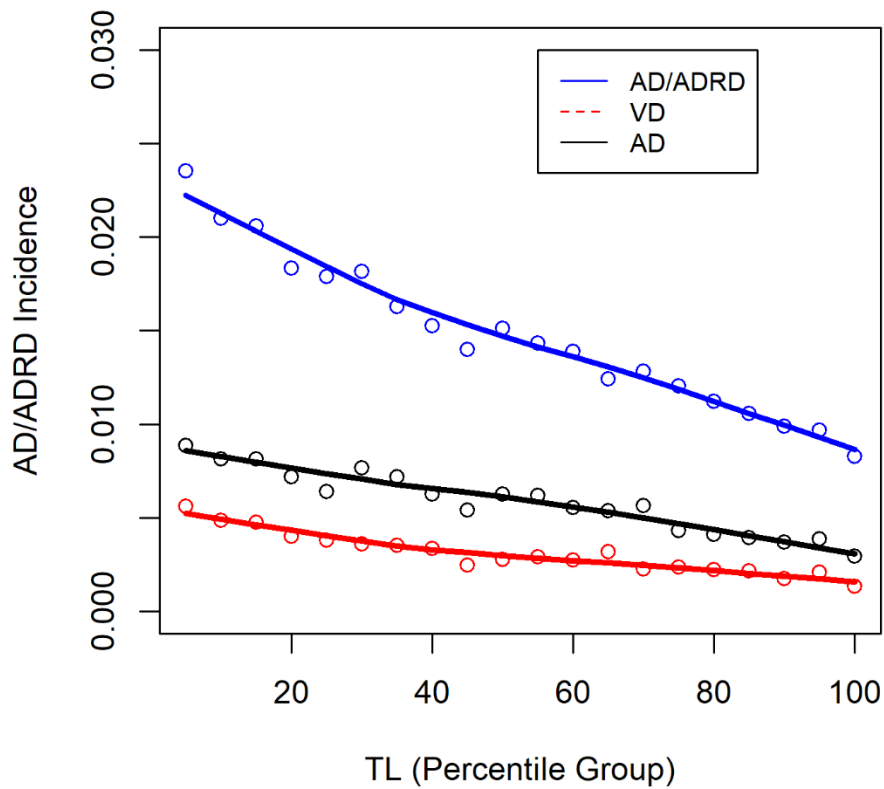
Characteristics	Baseline Cohort (N=435,046)	Imaging Cohort (N=43,390)
Baseline age, years (mean ± SD)	56.8 ± 8	55.3 ± 7.5
Sex, female (%)	236,117 (54%)	22,373 (52%)
Death (%)	30,504 (7%)	425 (1%)
Age at death (mean ± SD)	71.1 ± 7.3	71.6 ± 6.4
Education (%)		
None	75,541 (18%)	2,984 (7%)
CSEs or equivalent	16,231 (4%)	1,122 (3%)
O levels/GCSEs or equivalent	59,497 (13%)	4,705 (11%)
A/AS levels/NVQ/HND/HNC	79,609 (18%)	7,778 (18%)
Other professional qualifications	64,394 (15%)	6,946 (16%)
College or university degree	137,941 (32%)	19,721 (46%)
Townsend deprivation index	-1.5 ± 3	-1.9 ± 2.7
BMI, kg/m² (mean ± SD)	27.4 ± 4.8	26.6 ± 4.3
Smoking status (%)		
Never	234,004 (54%)	26,022 (60%)
Previous	154,156 (36%)	14,596 (34%)
Current	45,343 (10%)	2,687 (6%)
Alcohol intake frequency (%)		
Never	29,060 (7%)	1,847 (4%)
Special occasions only	46,553 (11%)	3,323 (8%)
1-3 times a month	48,359 (11%)	4,619 (11%)
1-2 times a week	114,513 (26%)	11,195 (26%)
3-4 times a week	104,311 (24%)	12,345 (28%)
Daily or almost daily	91,947 (21%)	10,053 (23%)
IPAQ activity group (%)		
Low	57,696 (14%)	5,742 (14%)
Moderate	177,073 (44%)	18,504 (45%)
High	163,435 (41%)	16,902 (41%)
APOE genotype (%)		
e3e3	254,331 (58.46%)	25,619 (59.04%)
e2e3	53,573 (12.31%)	5,388 (12.42%)
e2e2	2,766 (0.64%)	250 (0.58%)
e2e4	10,931 (2.51%)	1,036 (2.39%)
e3e4	103,077 (23.69%)	10,122 (23.33%)
e4e4	10,350 (2.38%)	975 (2.25%)
e1e2	3 (<0.01%)	0 (0.00%)
Telomere length (T/S ratio), adjusting for technical parameters	0.83 ± 0.13	0.84 ± 0.13

Abbreviations: SD, standard deviation; APOE, apolipoprotein E; CSE, certificate of secondary education; GCSE, general certificate of secondary education; NVQ, national vocational qualification; HND, higher national diploma; HNC, higher national certificate. BMI, body mass index; IPAQ, International Physical Activity Questionnaire.

eTable 5. Participant characteristics at baseline of incident AD/ADRD cases versus normal controls

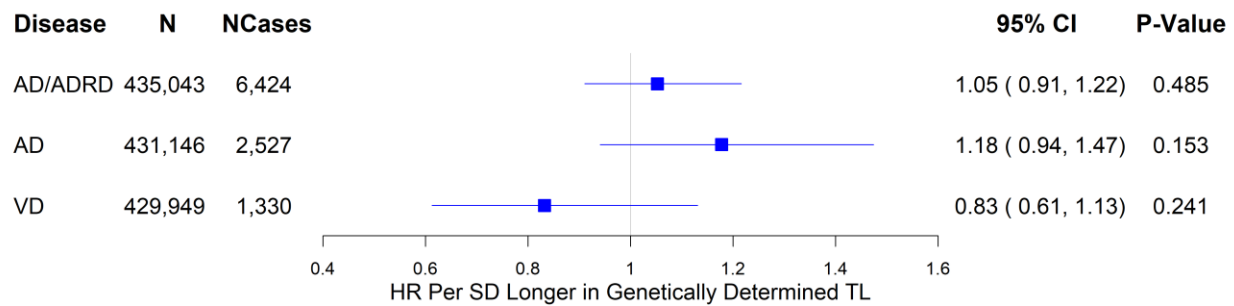
Characteristics	AD/ADRD (N=6,424)	Normal Controls (N=428,622)	P-Value
Baseline age, years (mean ± SD)	64.0 ± 5.1	56.7 ± 8.0	< 2.2×10 ⁻¹⁶
Sex, female (%)	2,973 (46%)	233,144 (54%)	< 2.2×10 ⁻¹⁶
Death (%)	3,009 (47%)	27,495 (6%)	< 2.2×10 ⁻¹⁶
Age at death (mean ± SD)	74.7 ± 5.3	69.4 ± 7.3	
Education (%)			< 2.2×10 ⁻¹⁶
None	2,276 (36%)	73,265 (17%)	
CSEs or equivalent	119 (2%)	16,112 (4%)	
O levels/GCSEs or equivalent	817 (13%)	56,680 (13%)	
A/AS levels/NVQ/HND/HNC	998 (16%)	78,611 (19%)	
Other professional qualifications	845 (13%)	63,549 (15%)	
College or university degree	1,246 (20%)	136,695 (32%)	
Townsend deprivation index	-0.9 ± 3.3	-1.5 ± 3.0	7.3×10 ⁻³⁸
BMI, kg/m² (mean ± SD)	27.8 ± 5.0	27.4 ± 4.8	9.3×10 ⁻¹²
Smoking status (%)			< 2.2×10 ⁻¹⁶
Never	2,842 (45%)	231,162 (54%)	
Previous	2,777 (44%)	151,379 (35%)	
Current	762 (12%)	44,581 (10%)	
Alcohol intake frequency (%)			< 2.2×10 ⁻¹⁶
Never	826 (13%)	28,234 (7%)	
Special occasions only	875 (14%)	45,678 (11%)	
1-3 times a month	636 (10%)	47,723 (11%)	
1-2 times a week	1,471 (23%)	113,042 (26%)	
3-4 times a week	1,182 (18%)	103,129 (24%)	
Daily or almost daily	1,420 (22%)	90,527 (21%)	
IPAQ activity group (%)			7.6×10 ⁻⁷
Low	925 (16%)	56,771 (14%)	
Moderate	2,556 (45%)	174,517 (44%)	
High	2,144 (38%)	161,291 (41%)	
APOE genotype (%)			< 2.2×10 ⁻¹⁶
e3e3	2,651 (41.27%)	251,680 (59.72%)	
e2e3	473 (7.36%)	53,100 (12.39%)	
e2e2	30 (0.47%)	2,736 (0.64%)	
e2e4	159 (2.48%)	10,772 (2.51%)	
e3e4	2,449 (38.12%)	100,628 (23.48%)	
e4e4	662 (10.31%)	9,688 (2.26%)	
e1e2	0 (0.00%)	3 (<0.01%)	
Telomere length (T/S ratio), adjusting for technical parameters	0.80 ± 0.12	0.83 ± 0.13	< 2.2×10 ⁻¹⁶

Abbreviations: SD, standard deviation; APOE, apolipoprotein E; CSE, certificate of secondary education; GCSE, general certificate of secondary education; NVQ, national vocational qualification; HND, higher national diploma; HNC, higher national certificate. BMI, body mass index; IPAQ, International Physical Activity Questionnaire.



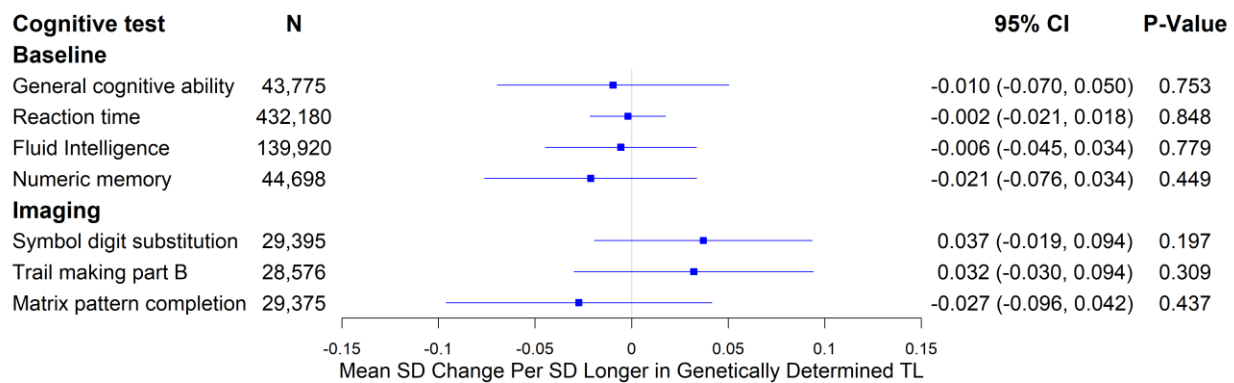
eFigure 1. Relationship between baseline leukocyte telomere length and incidence of AD/ADRD.

AD/ADRD incidence calculated for participants with TL between 0-2nd percentile, 3rd-4th percentile, ..., or 98th-100th percentile and similarly for vascular dementia (VD) and Alzheimer's disease or dementia in Alzheimer's disease (AD).



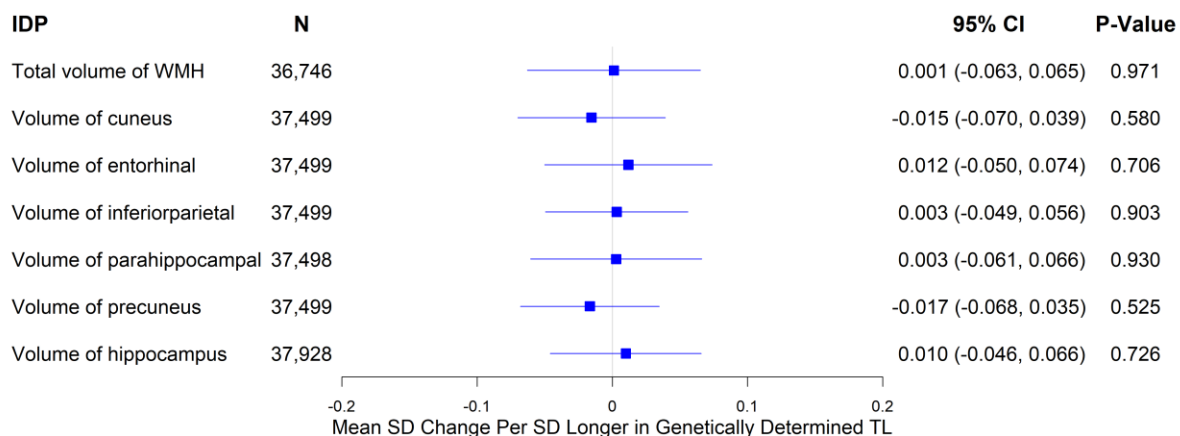
eFigure 2. Associations between genetically determined telomere length and AD/ADRD using the Inverse Variance Weighted (IVW) method

*Significant at the false discovery rate < 0.05 level; AD: Alzheimer’s disease or dementia in Alzheimer’s disease; VD: vascular dementia.



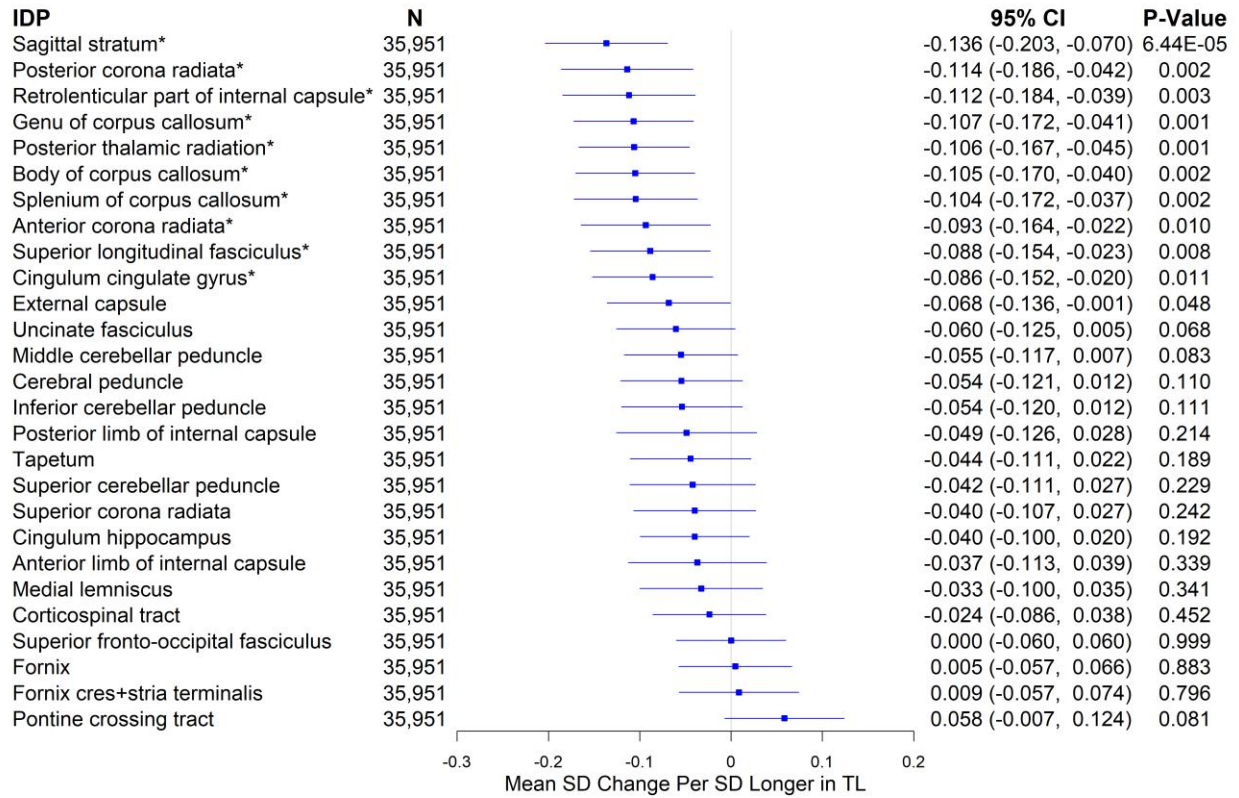
eFigure 3. Associations between genetically determined telomere length and cognitive function using the Inverse Variance Weighted (IVW) method

*Significant at the false discovery rate < 0.05 level.



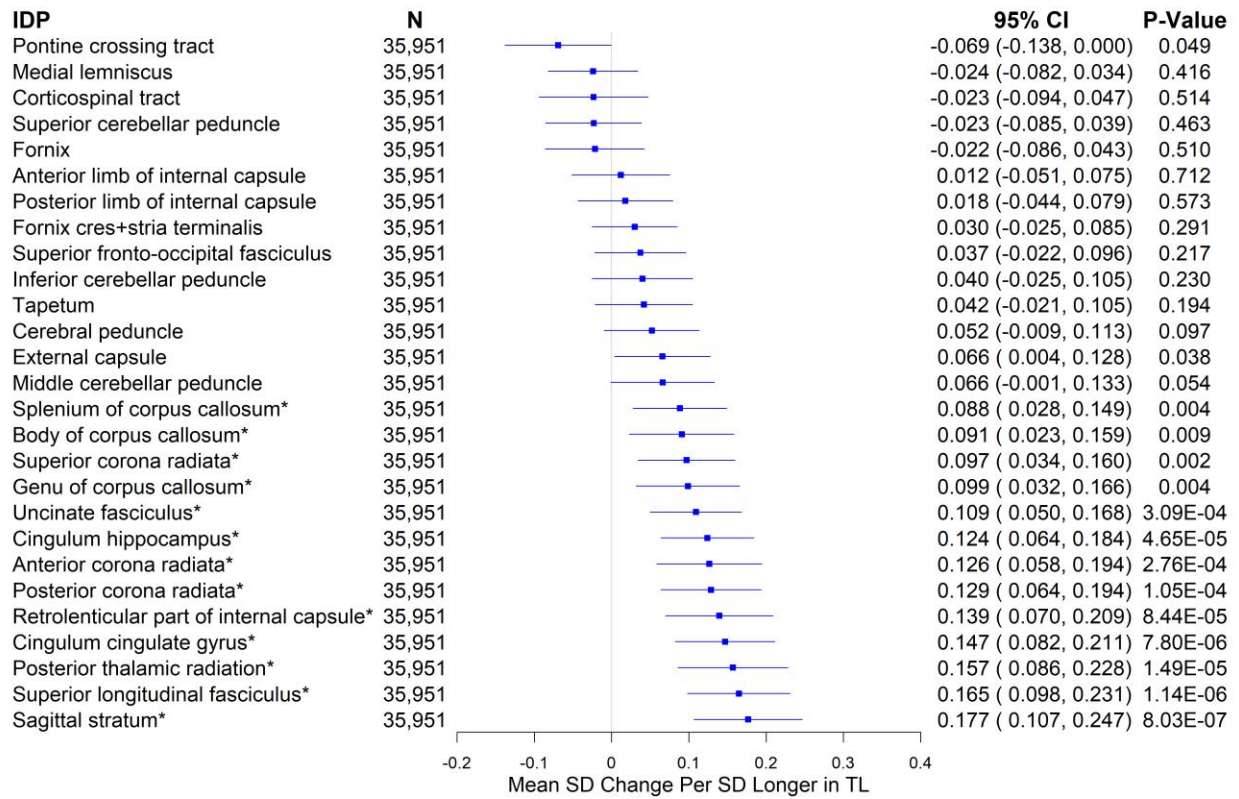
eFigure 4. Associations between genetically determined telomere length and volumetric IDPs of AD signatures and white matter hyperintensities (WMH) using the Inverse Variance Weighted (IVW) method

*Significant at the false discovery rate < 0.05 level.



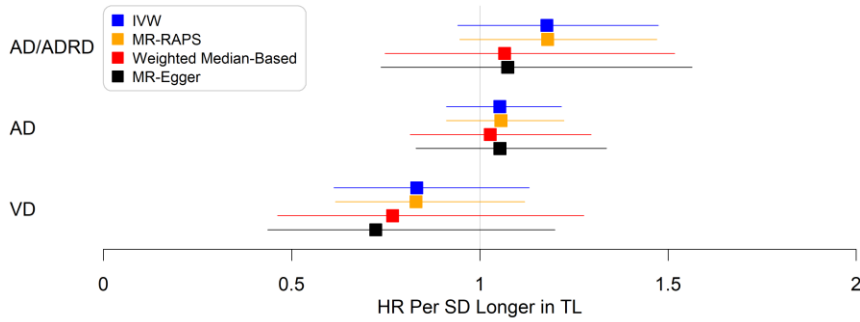
eFigure 5. Associations between genetically determined telomere length and weighted-mean fractional anisotropy IDPs using the Inverse Variance Weighted (IVW) method

*Significant at the false discovery rate < 0.05 level.



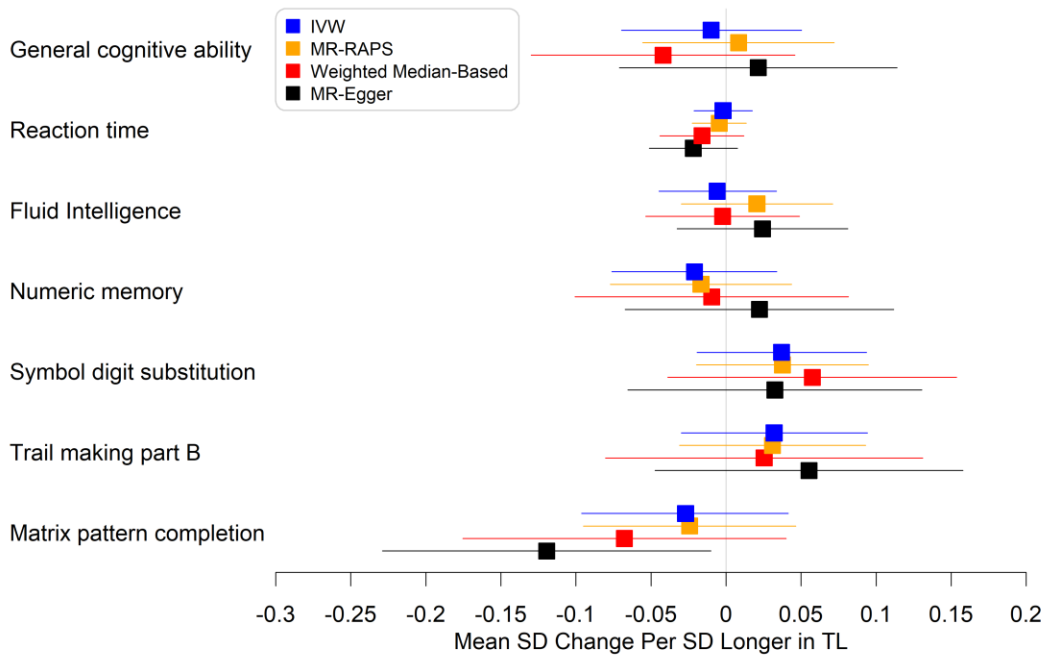
eFigure 6. Associations between genetically determined telomere length and weighted-mean mean diffusivity IDPs using the Inverse Variance Weighted (IVW) method

*Significant at the false discovery rate < 0.05 level.



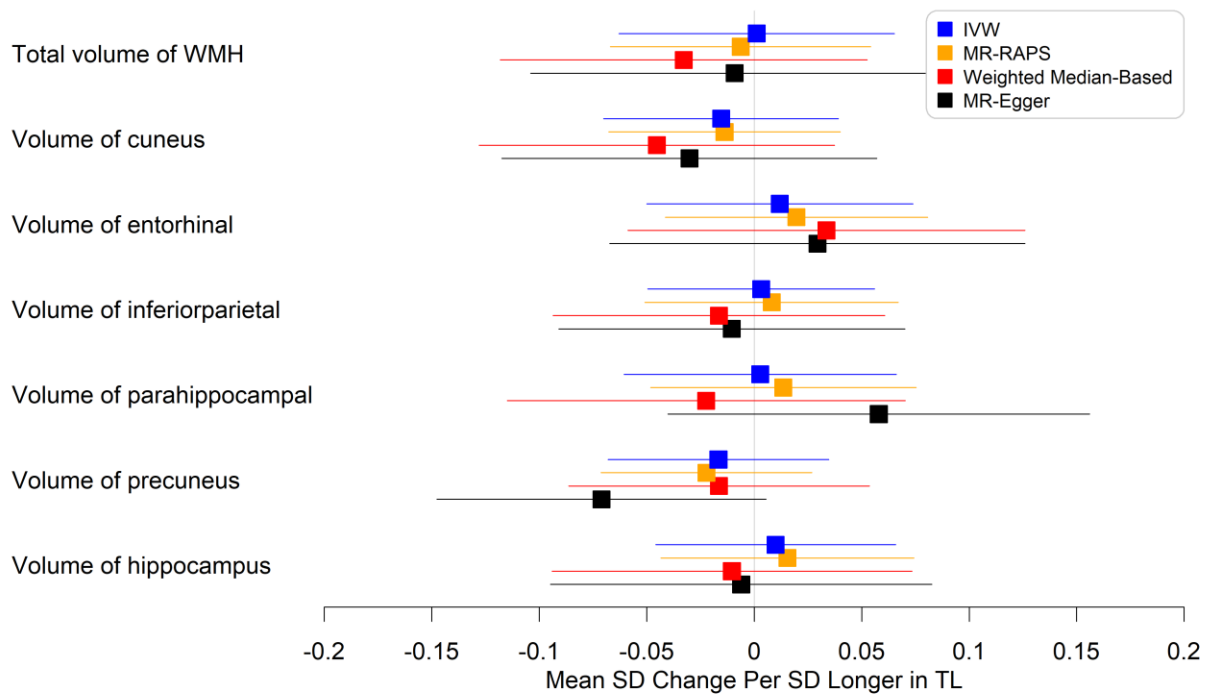
eFigure 7. Associations between genetically determined telomere length and AD/ADRD, comparing the primary (IVW: inverse variance weighted) to secondary MR methods (Mendelian randomization robust adjusted profile score (MR-RAPS); weighted median based method; MR-Egger method)

*Significant at the false discovery rate < 0.05 level using the IVW method; AD: Alzheimer’s disease or dementia in Alzheimer’s disease; VD: vascular dementia.



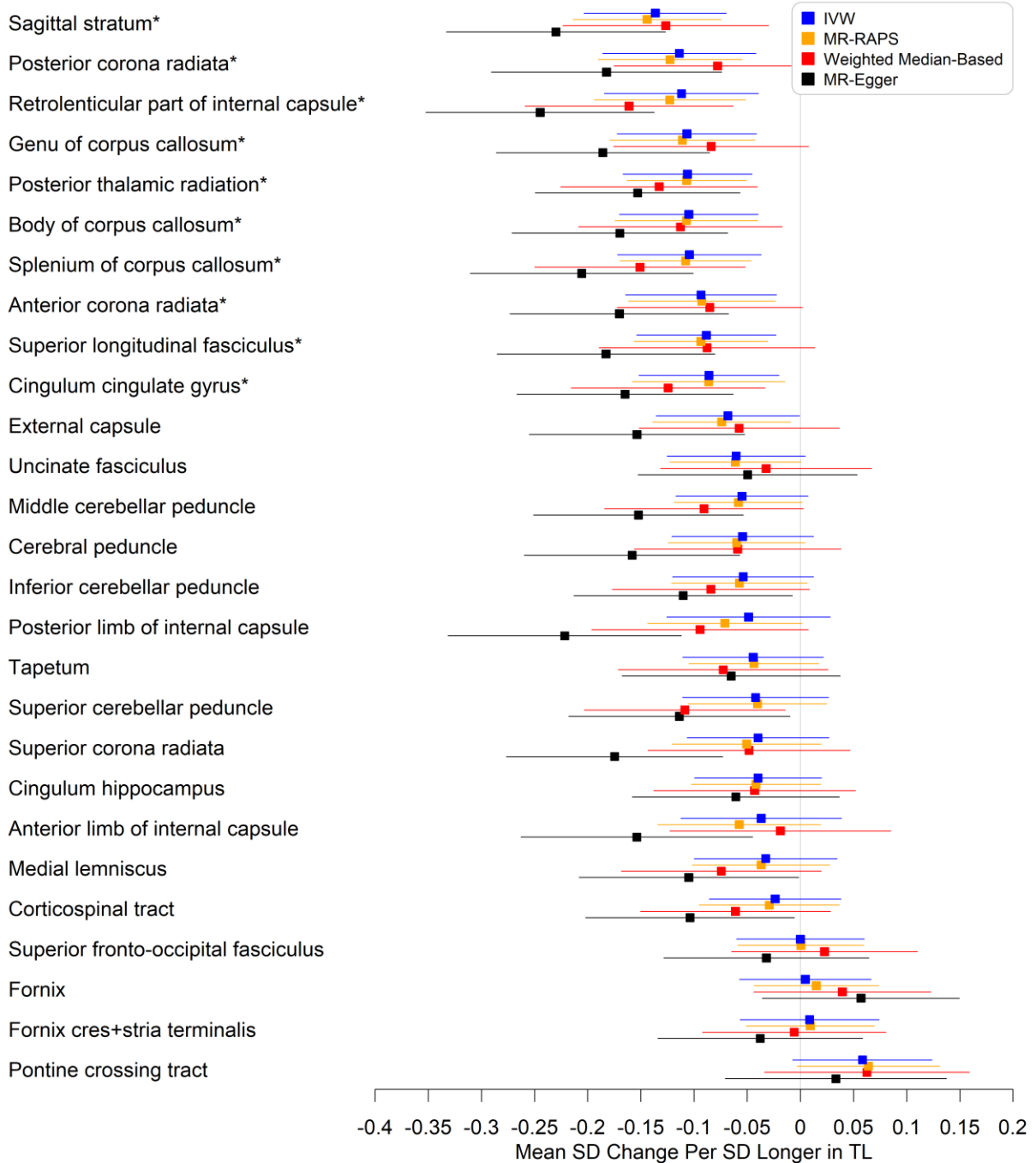
eFigure 8. Associations between genetically determined telomere length and cognitive function, comparing the primary (IVW: inverse variance weighted) to secondary MR methods (Mendelian randomization robust adjusted profile score (MR-RAPS); weighted median based method; MR-Egger method)

*Significant at the false discovery rate < 0.05 level using the IVW method.



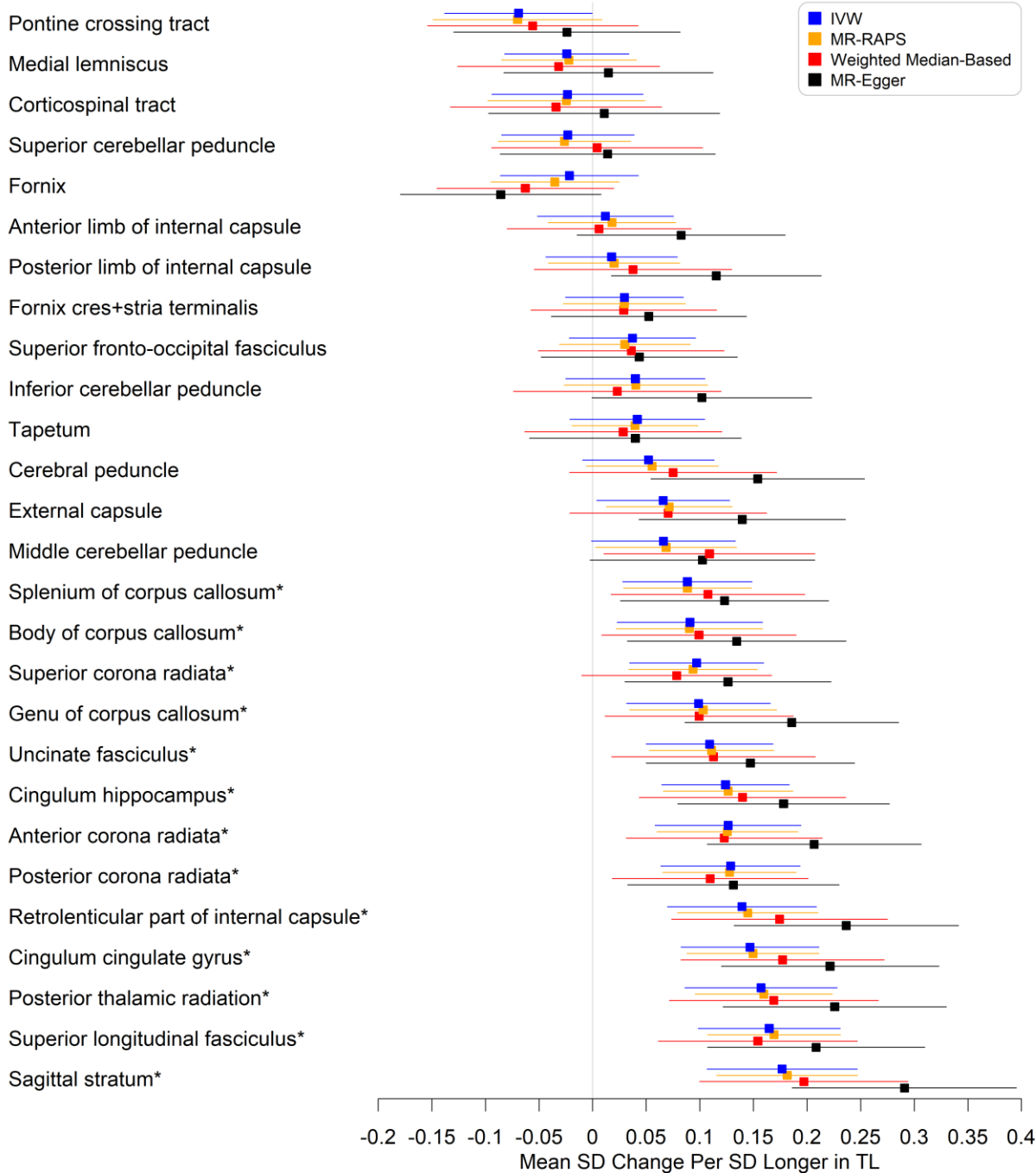
eFigure 9. Associations between genetically determined telomere length and volumetric IDPs of AD signatures and white matter hyperintensities (WMH), comparing the primary (IVW: inverse variance weighted) to secondary MR methods (Mendelian randomization robust adjusted profile score (MR-RAPS); weighted median based method; MR-Egger method)

*Significant at the false discovery rate < 0.05 level using the IVW method.



eFigure 10. Associations between genetically determined telomere length and weighted-mean fractional anisotropy IDPs, comparing the primary (IVW: inverse variance weighted) to secondary MR methods (Mendelian randomization robust adjusted profile score (MR-RAPS); weighted median based method; MR-Egger method)

*Significant at the false discovery rate < 0.05 level using the IVW method.



eFigure 11. Associations between genetically determined telomere length and weighted-mean mean diffusivity IDPs, comparing the primary (IVW: inverse variance weighted) to secondary MR methods (Mendelian randomization robust adjusted profile score (MR-RAPS); weighted median based method; MR-Egger method)

*Significant at the false discovery rate < 0.05 level using the IVW method.