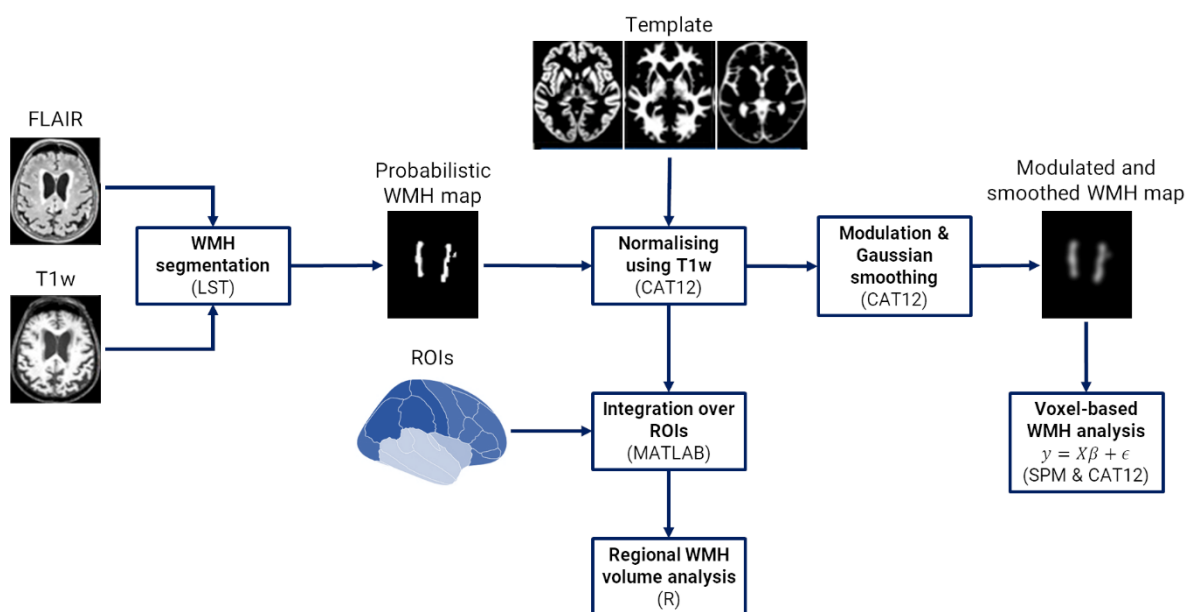


Arterial hypertension and β -amyloid accumulation have spatially overlapping effects on posterior white matter hyperintensity presence and volume (Online-only material)

Online-only figures

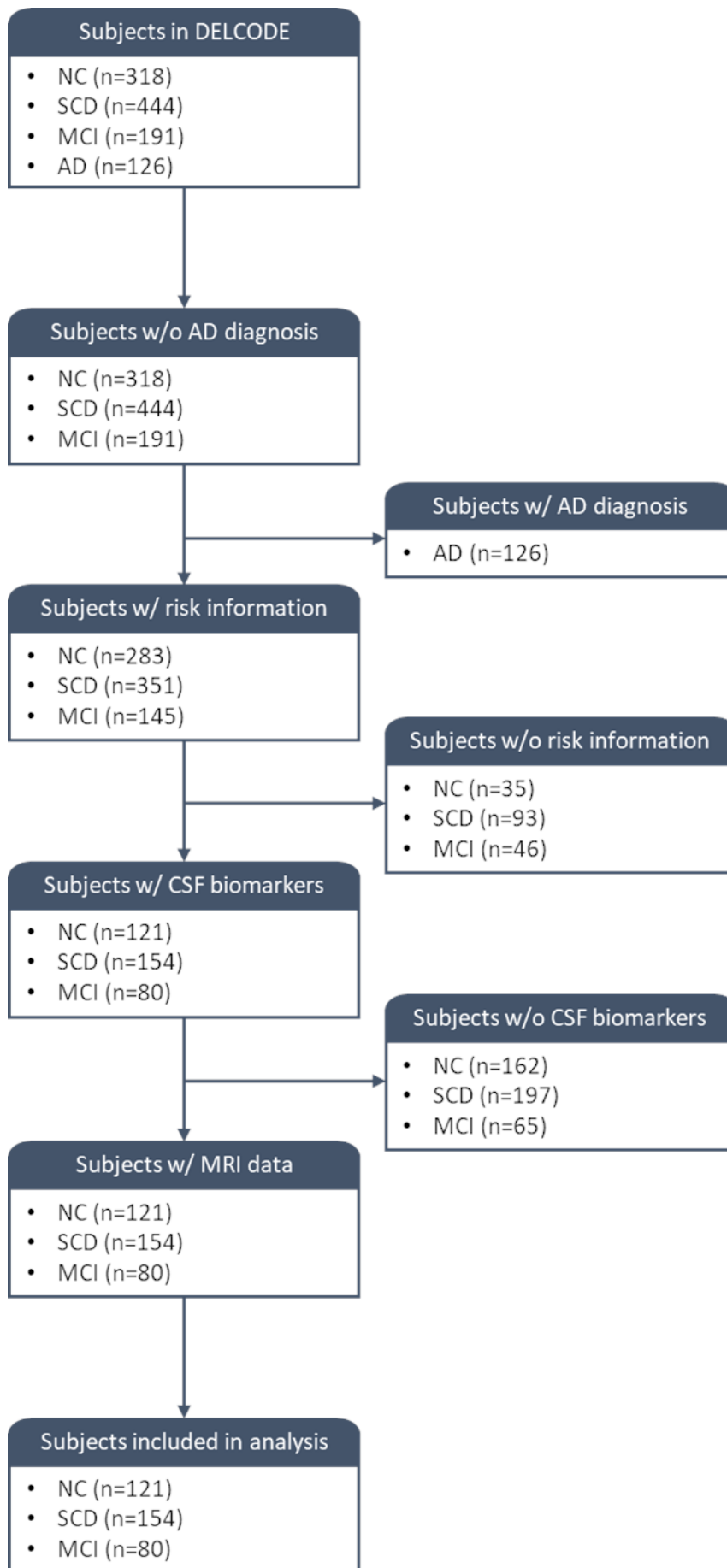
eFigure 1. Schematic illustration of WMH processing and analysis pipeline.

We segmented WMH based on baseline T1w and FLAIR scans using the Lesion Prediction Algorithm in the Lesion Segmentation Toolbox. We then used SPM's geodesic shooting for normalising tissue classes (and WMH maps) into MNI to a study-specific template. At this stage, we integrated WMH over 12 regions of interest, including the whole brain, lobes, corona radiata, external capsule, internal capsule, optic radiation, and corpus callosum. In R, we used these estimates to perform ROI-based analysis (regional WMH volume in relation to hypertension, A β positivity, and cognitive performance) and mediation models (hypertension and A β as independent variables; regional WMH volume as mediator; and cognitive performance as dependent variable). Later, we adjusted for local volume changes introduced by the normalisation in WMH probability maps by modulation with the Jacobian determinant. Finally, we smoothed WMH maps with Gaussian kernels (4 mm and 6 mm full width at half maximum). We used the modulated and smoothed WMH maps as input to our voxel-based WMH analysis. We investigated local effects of hypertension and A β on WMH maps and of WMH on cognition. We used CAT12 for this purpose.



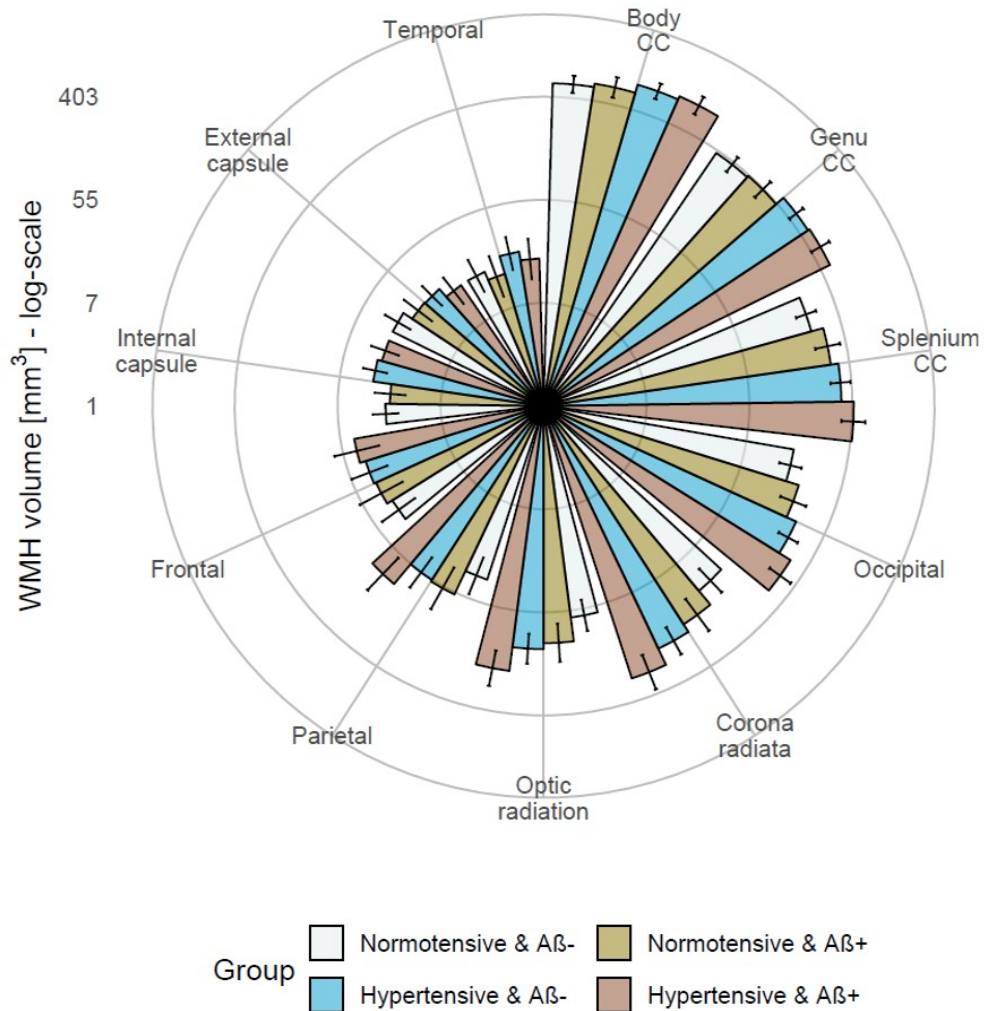
eFigure 2. Inclusion/exclusion flowchart.

We included non-AD subjects with cerebrospinal fluid (CSF) biomarkers, MRI data, and information regarding cardiovascular risk factors.



eFigure 3. Estimated marginal means suggest that subjects with hypertension and abnormal A β biomarker levels had the largest global and regional WMH volumes, whereas those with normotension and normal A β biomarker levels had the lowest.

Error bars represent 95% confidence intervals. We log-transformed WMH volumes to deal with skewness. We accounted for the effects of age, sex, education, site, and total intracranial volume. CC: Corpus callosum.



Online-only tables

eTable 1. Memory and executive function decrease significantly as WMH volume increases.

	Regional WMH volume	Baseline				Longitudinal	
		Memory		Executive		PACC5 change	
		B (SE)	<i>p</i>	B (SE)	<i>p</i>	B (SE)	<i>p</i>
Lobes	Global white matter	-0.29 (0.08)	<0.001	-0.24 (0.08)	0.004	2.18 (0.61)	<0.001
	Frontal white matter	-0.24 (0.18)	0.175	-0.33 (0.18)	0.067	1.86 (1.36)	0.173
	Temporal white matter	-0.50 (0.16)	0.002	-0.45 (0.16)	0.005	2.41 (1.28)	0.060
	Occipital white matter	-0.28 (0.10)	0.008	-0.12 (0.11)	0.245	3.31 (0.75)	<0.001
	Parietal white matter	-0.24 (0.17)	0.168	-0.31 (0.17)	0.074	3.09 (1.37)	0.025
Tracts	Corona radiata	-0.52 (0.15)	<0.001	-0.49 (0.15)	<0.001	3.46 (1.10)	0.002
	External capsule	0.22 (0.13)	0.089	0.20 (0.13)	0.118	-0.70 (0.99)	0.480
	Internal capsule	-0.36 (0.11)	0.002	-0.36 (0.11)	0.001	2.88 (0.87)	0.001
	Optic radiation	-0.29 (0.14)	0.038	-0.11 (0.14)	0.428	3.10 (1.03)	0.003
CC	Genu	-0.26 (0.08)	0.001	-0.20 (0.08)	0.015	1.87 (0.64)	0.004
	Body	-0.28 (0.08)	<0.001	-0.25 (0.08)	0.001	1.97 (0.57)	0.001
	Splenium	-0.37 (0.09)	<0.001	-0.30 (0.10)	0.002	2.45 (0.70)	0.001

For each region of interest, we also used multiple linear regression in the R package stats (v3.6.2) to probe the relationship between regional WMH volume and cognition. We created different models with memory, executive function, and PACC5 rates of change over three years as dependent variables. We adjusted for hypertension, A β positivity, age, sex, education, site, and total intracranial volume. We log-transformed WMH volumes to deal with skewness. B: regression coefficient. SE: standard error. We print $p < 0.05$ (FDR) in bold. CC: Corpus callosum.

eDesign

Overall study design and participants

The presence of SCD and amnesic MCI was diagnosed using the existing research criteria for SCD^{1,2} and MCI³, respectively. Participants were diagnosed with SCD if they reported subjective cognitive decline or memory concerns, as expressed to the physician of the memory centre, and had a test performance better than -1.5 standard deviations (SD) below the age, sex, and education-adjusted normal performance on all subtests of the CERAD battery. Only participants with amnesic MCI were included in the MCI group, as defined by age, sex, and education-adjusted performance below -1.5 SD on the delayed recall trial of the CERAD word-list episodic memory tests.

The NC group was recruited through local newspaper advertisements. Individuals who responded to the advertisement were screened by telephone with regard to SCD. The control group had to achieve unimpaired cognitive performance according to the same definition as the SCD group. The report of very subtle cognitive decline, which did not cause any concerns and was considered normal for age by the individual was not an exclusion criterion for the control group.

All participants entered DELCODE based on either their clinical diagnosis derived from the clinical workup or their identification as a control subject according to the procedures outlined. Additional inclusion criteria for all groups were age ≥ 60 years, fluent German language skills, capacity to provide informed consent, and presence of a study partner. The main exclusion criteria for all groups were conditions clearly interfering with participation in the study or the study procedures, including significant sensory impairment. The following medical conditions were considered exclusion criteria: current major depressive episode, major psychiatric disorders either at baseline or in the past (e.g., psychotic disorder, bipolar disorder, substance abuse), neurodegenerative disorder other than AD, vascular dementia, history of stroke with residual clinical symptoms, history of malignant disease, severe or unstable medical condition, and clinically significant abnormalities in vitamin B12. Prohibited drugs included chronic use of psychoactive compounds with sedative or anticholinergic effects, use of anti-dementia agents in SCD, amnesic MCI, and control subjects, and investigational drugs for the treatment of dementia or cognitive impairment one month before entry and throughout the duration of the study.

All participants gave written informed consent before inclusion in the study. DELCODE is retrospectively registered at the German Clinical Trials Register (DRKS00007966, 04/05/2015) and was approved by ethical committees and local review boards.

In the present study, we included and merged participants along the cognitive continuum with NC, SCD and MCI to enrich our sample by variance due to vascular disease and A β pathology.

eMethods

Cognitive performance

We selected subjects with available PACC5 scores over three annual follow-ups for further analysis. We estimated rates of change in these PACC5 scores over time using a linear mixed effect model. We expressed it as follows:

$$PACC5_{ij} = X_{ij}\beta + Z_{ij} b_i + \epsilon_{ij}, \quad (1)$$

where $PACC5_{ij}$ is the PACC5 scores of subject $i \in [1, N]$ at visit $j \in [1, t]$; $X_{ij} \in \mathbb{R}^{N \times p}$ a matrix of the p predictor variables; $\beta \in \mathbb{R}^p$ a vector of fixed-effects regression coefficients; $Z_{ij} \in \mathbb{R}^{N \times q}$ a design matrix for the q random effects; $b_i \in \mathbb{R}^q$ a vector of random effects; and ϵ_{ij} the within-subject measurement errors. The fixed effects structure include clinical group structure measured at baseline (SCD, MCI, AD, and AD relatives) and their corresponding interaction with time (t_{ij}). The fixed effects include age, sex and education taken at baseline.

Structural MRI data acquisitions

Structural MRI scans were acquired at nine German DZNE sites on Siemens MR scanners (including three TIM Trio, four Verio, one Skyra, and one Prisma system). We used T1-weighted MPRAGE images (3D GRAPPA PAT 2, 1 mm³ isotropic, 256 × 256, 192 sagittal slices, repetition time (TR) 2500 ms, echo time (TE) 4.33 ms, inversion time (TI) 1100 ms, flip angle (FA) 7°, ~5 min acquisition time) and T2-weighted 3D Fluid Attenuated Inversion Recovery (FLAIR) images (GRAPPA PAT factor 2, 1 mm³ isotropic, 256 × 256, 192 sagittal slices, TR 5000 ms, TE 394 ms, TI 1800 ms, ~7 min acquisition time). Standard operating procedures, quality assurance and assessment were provided and supervised by the DZNE imaging network (iNET, Magdeburg) as described in⁴.

Statistical analyses

Mediation models. We followed the steps for mediation analysis suggested by Baron & Kenny.⁵ First, we tested for an effect of the independent variable on the dependent variable. We ruled out any mediation effects if there was insufficient evidence to indicate such a relationship ($p < 0.05$). Second, we investigated whether the independent variable was associated with the mediator variable. Adequate evidence for the impact of the independent variable on the mediator was required as a ground for mediation. Third, we examined whether the independent variable and mediator were associated with the dependent variable and how the presence of the mediator in the new model altered the effects seen in the first step (full or partial mediation).

References

1. Molinuevo JL, Rabin LA, Amariglio R, et al. Implementation of subjective cognitive decline criteria in research studies. *Alzheimer's Dement.* 2017;13:296–311.
2. Jessen F, Amariglio RE, Van Boxtel M, et al. A conceptual framework for research on subjective cognitive decline in preclinical Alzheimer's disease. *Alzheimer's Dement.* 2014;10:844–852.
3. Albert MS, DeKosky ST, Dickson D, et al. The diagnosis of mild cognitive impairment due to Alzheimer's disease: Recommendations from the National Institute on Aging-Alzheimer's Association workgroups on diagnostic guidelines for Alzheimer's disease. *Alzheimer's Dement.* 2011;7:270–279.
4. Jessen F, Spottke A, Boecker H, et al. Design and first baseline data of the DZNE multicenter observational study on predementia Alzheimer's disease (DELCODE). *Alzheimer's Res Ther.* *Alzheimer's Research & Therapy*; 2018;10:1–10.
5. Baron RM, Kenny DA. The Moderator-Mediator Variable Distinction in Social Psychological Research: Conceptual, Strategic, and Statistical Considerations. *J Penal Soc Psychol.* 1986;51:1173–1182.