

## 1 **Adeno-associated virus 2 infection in children with non-A-E hepatitis**

2 Antonia Ho<sup>1\*</sup>, Richard Orton<sup>1\*</sup>, Rachel Tayler<sup>2\*</sup>, Patawee Asamaphan<sup>1\*</sup>, Lily Tong<sup>1</sup>,  
3 Katherine Smollett<sup>1</sup>, Chris Davis<sup>1</sup>, Maria Manali<sup>1</sup>, Sarah E. McDonald<sup>1</sup>, Louisa Pollock<sup>2</sup>, Clair  
4 Evans<sup>3</sup>, Jim McMenemy<sup>4</sup>, Kirsty Roy<sup>4</sup>, Kimberly Marsh<sup>4</sup>, Titus Divala<sup>4</sup>, Matt Holden<sup>4</sup>,  
5 Michael Lockhart<sup>4</sup>, David Yirrell<sup>4</sup>, Sandra Currie<sup>4</sup>, Samantha J. Shepherd<sup>5</sup>, Celia Jackson<sup>5</sup>,  
6 Rory Gunson<sup>5</sup>, Alasdair MacLean<sup>5</sup>, Neil McInnes<sup>5</sup>, Richard Battle<sup>6</sup>, Jill Hollenbach<sup>7</sup>, Paul  
7 Henderson<sup>8</sup>, Meera Chand<sup>9</sup>, Melissa Shea Hamilton<sup>10</sup>, Diego Estrada-Rivadeneira<sup>10</sup>, Michael  
8 Levin<sup>10</sup>, DIAMONDS consortium, ISARIC4C Investigators, David L Robertson<sup>1†</sup>, Ana  
9 Filipe<sup>1†</sup>, Brian Willett<sup>1†</sup>, Judith Breuer<sup>11†</sup>, Malcolm G Semple<sup>12†</sup>, David Turner<sup>6†</sup>, J Kenneth  
10 Baillie<sup>8†</sup>, Emma C. Thomson<sup>1,13†</sup>

11

12 1. Medical Research Council-University of Glasgow Centre for Virus Research,

13 Glasgow, UK

14 2. Department of Paediatrics, Royal Hospital for Children, Glasgow, UK

15 3. Department of Pathology, Queen Elizabeth University Hospital, Glasgow, UK

16 4. Public Health Scotland, Glasgow, UK

17 5. West of Scotland Specialist Virology Centre, Glasgow, UK

18 6. Histocompatibility and Immunogenetics (H&I) Laboratory, Scottish National Blood

19 Transfusion Service, Edinburgh Royal Infirmary, Edinburgh, UK

20 7. University of California, San Francisco, USA

21 8. University of Edinburgh, Edinburgh, UK

22 9. UK Health Security Agency, UK

23 10. Section of Paediatric Infectious Disease, Department of Infectious Disease, Imperial

24 College London, London, UK

25 11. University College London, London, UK

NOTE: This preprint reports new research that has not been certified by peer review and should not be used to guide clinical practice.

26 12. Pandemic Institute, University of Liverpool, Liverpool, UK

27 13. Department of Clinical Research, London School of Hygiene and Tropical Medicine,

28 London, UK

29

30 \*These authors contributed equally to this work

31 †These authors contributed equally to this work

32 **Summary paragraph**

33

34 An outbreak of acute hepatitis of unknown aetiology in children was first reported in Scotland  
35 in April 2022.<sup>1</sup> Cases aged <16 years have since been identified in 35 countries.<sup>2</sup> Here we  
36 report a detailed investigation of 9 early cases and 58 control subjects. Using next-generation  
37 sequencing and real-time PCR, adeno-associated virus 2 (AAV2), was detected in the plasma  
38 of 9/9 and liver of 4/4 patients but in 0/13 sera/plasma of age-matched healthy controls, 0/12  
39 children with adenovirus (HAdV) infection and normal liver function and 0/33 children  
40 admitted to hospital with hepatitis of other aetiology. AAV2 typically requires a coinfecting  
41 ‘helper’ virus to replicate, usually HAdV or a herpesvirus. HAdV (species C and F) and human  
42 herpesvirus 6B (HHV6B) were detected in 6/9 and 3/9 affected cases, including 3/4 and 2/4  
43 liver biopsies, respectively. The class II HLA-DRB1\*04:01 allele was identified in 8/9 cases  
44 (89%), compared with a background frequency of 15.6% in Scottish blood donors, suggestive  
45 of increased susceptibility in affected cases. Acute non-A-E paediatric hepatitis is associated  
46 with the presence of AAV2 infection, which could represent a primary pathogen or a useful  
47 biomarker of recent HAdV or HHV6B infection. Population and mechanistic studies are  
48 required to explore these findings further.

49

50

51 **Main text**

52

53 **Hepatitis outbreak in Scottish children**

54 In April 2022, a cluster of five young children presented with jaundice<sup>1</sup> and acute severe  
55 hepatitis of unknown aetiology were reported by several hospital sites in Scotland.<sup>1</sup> In  
56 response, Public Health Scotland (PHS) convened a National Incident Management Team  
57 (IMT), alongside the UK Health Security Agency (UK HSA) and academic partners  
58 (ISARIC4C Investigators) to coordinate further investigations and the public health response.  
59 As of 4 July 2022, 36 children aged 10 years and under with acute unexplained non-A to E  
60 hepatitis have been confirmed in Scotland, one of whom required liver transplantation (**Figure**  
61 **1a**).<sup>3</sup> Elsewhere in the UK, 186 confirmed cases have been reported and 14 children have  
62 required liver transplantation.<sup>3</sup> Globally, the World Health Organisation (WHO) has reported  
63 over 1010 probable cases fulfilling their case definition in 35 countries.<sup>2</sup> Clinical investigations  
64 in Scotland excluded all expected causes of acute hepatitis including hepatitis A, B, C and E  
65 viruses, HSV, CMV and EBV. Adenovirus (HAdV) was identified by PCR in 53.1% (17/32)  
66 of tested cases. Recent reports from the UK and the USA have also identified HAdV to be  
67 present in the majority of cases in two cohorts of children<sup>4-6</sup>. A spike of HAdV infections in  
68 Scotland predominantly affecting children <5 years also directly preceded the outbreak of  
69 unexplained hepatitis (**Figure 1b**). SARS-CoV-2 PCR was positive in 16.7% (6/36 tested  
70 cases).<sup>3</sup> A rise in COVID-19 cases in the community preceded the spike in non-A-E hepatitis  
71 by around two years (**Figure 1c**). Human herpesvirus 6 (HHV6A and HHV6B) infections were  
72 not detected at higher levels during 2021 or 2022 (**Figure 1d**).

73

74

75

76 **Research investigation**

77 To investigate the aetiology of the acute hepatitis cases, we recruited nine of the earliest  
78 affected children who presented to hospital between 14 March and 4 April 2022 into the  
79 International Severe Acute Respiratory and Emerging Infections Consortium (ISARIC) WHO  
80 Clinical Characterisation Protocol UK (CCP-UK) [ISRCTN 66726260]<sup>7</sup>. Ethical approval was  
81 given by the South Central–Oxford C Research Ethics Committee in England (13/SC/0149),  
82 the Scotland A Research Ethics Committee (20/SS/0028), and the WHO Ethics Review  
83 Committee (RPC571 and RPC572). Control samples were obtained from the Diagnosis and  
84 Management of Febrile Illness using RNA Personalised Molecular Signature Diagnosis study  
85 cohort (DIAMONDS; <https://www.diamonds2020.eu>). This study recruited children  
86 presenting with suspected infection or inflammation. Patients were recruited with the informed  
87 written consent of parents or guardians. The DIAMONDS study was approved by the London  
88 – Dulwich Research Ethics Committee (20/HRA/1714).

89

90 Control subjects were restricted to children recruited in the UK between January 2020 and  
91 April 2022. Three comparison groups were identified: Group 1, sera from 13 age-matched  
92 healthy children (10 male, 3 female; age range 3-5 years); Group 2, 12 children (8 male, 4  
93 female; age range 1-4 years) with PCR-confirmed HAdV infection and normal transaminases  
94 (n=12); Group 3, 33 children (18 male, 15 female; age range 2-16 years) with raised  
95 transaminases who were HAdV PCR negative. Within Group 3, 15 children required critical  
96 care for ventilatory or cardiovascular support. There was no significant difference in age  
97 between cases and healthy controls, but some control samples were sampled earlier than case  
98 samples (January 2020-April 2022 versus March-April 2022). Children with HAdV infection  
99 with normal liver function were younger (median age 1.6 years; interquartile range (IQR) 1.1-  
100 3.3 years,  $p<0.001$ ), and children with deranged liver function and no adenoviral infection were

101 older (median age 9.2 years; IQR 6.7-13.6 years,  $p=0.001$ ), compared to cases.  
102 **(Supplementary Table 1).**

103

#### 104 **Clinical presentation**

105 The median age of case patients was 3.9 years (IQR: 3.4 to 5.1 years). Four of the nine children  
106 were male, and all were of white ethnicity. All were admitted to hospital and met the PHS case  
107 definition for confirmed acute hepatitis, with a serum transaminase  $>500$  IU/L (AST or ALT)  
108 without any known cause, aged 10 years or under and presenting after 1st January 2022. The  
109 majority of the children reported a preceding subacute history of abdominal pain, diarrhoea  
110 and vomiting, occurring between 1 to 11 weeks prior to acute hepatitis. None of the cases were  
111 immunocompromised and none had received COVID-19 vaccination. All routine blood tests  
112 for viral hepatitis, including hepatitis A, B, C, E, Epstein-Barr virus (EBV), cytomegalovirus  
113 (CMV), human herpes virus (HHV) 6/7 and herpes simplex virus (HSV) were negative  
114 **(Supplementary Table 2)**. One case had weakly positive antinuclear antibodies (ANA; titre  
115 1:80), but otherwise autoimmune markers, [immunoglobulins, antinuclear antibodies (ANA),  
116 anti-mitochondrial antibodies (AMA), anti-smooth muscle antibodies (ASMA), anti-liver-  
117 kidney microsomal (anti-LKM) antibody and tissue transglutaminase antibody (TTG)] were  
118 negative. Four of the children had liver biopsies, which all showed evidence of lobular hepatitis  
119 with periportal and interface inflammation, bile duct proliferation and ballooning of  
120 hepatocytes, but no evidence of confluent fibrosis (**Figures 1e-j**). Two cases required transfer  
121 to a specialist liver unit due to significant synthetic liver dysfunction. Both improved with  
122 steroid therapy and neither required liver transplantation. There were no deaths and the median  
123 duration of hospital stay was 10 days (range 5-32 days).

124

#### 125 ***Genome sequencing***

126 As the epidemiology was in keeping with the emergence of an infectious pathogen, we  
127 undertook metagenomic and target enrichment sequencing and real-time PCR on all available  
128 clinical samples of cases, including plasma (n=9), liver biopsies (n=4), throat swabs (n=6),  
129 faecal samples (n=7) and a rectal swab (n=1), obtained between 7 to 80 days from initial  
130 symptom onset (**Figures 2a-d, Supplementary Tables 3-5**). Metagenomic sequencing was  
131 carried out using protocols designed to identify both RNA and DNA viruses. Semi-agnostic  
132 target enrichment sequencing was also performed using VirCapSeq-VERT Capture probes that  
133 target the genomes of 207 viral taxa known to infect vertebrates (**Supplementary**  
134 **Information**). The most frequently detected viral genomes in affected patient plasma were  
135 adeno-associated virus 2 (AAV2) in 9/9 patients (range 152-24,968 sequence reads per million)  
136 and at a lower read count, HAdV-F41 or HAdV-C (types 1, 2, 5 and 6 could not be  
137 distinguished reliably due to low read counts) in 6/9 patients (range 0-1.66 reads per million).  
138 HHV6B was detected at low level in the liver biopsy samples of 2/4 patients by PCR and 3/4  
139 plasma samples by NGS but was not confirmed by PCR in plasma in 9/9 patients (**Figures 2e,**  
140 **3a**).

141  
142 AAV2 was detected in 9/9 serum samples and 4/4 liver biopsies, 1/7 faecal, 1/1 rectal and 1/6  
143 throat swab samples. Near full genomes of AAV2 were detected in all 9 patients and contained  
144 two large open reading frames corresponding to rep and cap, flanked by ITR regions. Seven  
145 distinct lineages of AAV2 were noted (**Figure 4a**) within a cluster containing 4 AAV2  
146 genomes detected in France between 2004 and 2015. Two of three identical sequences were  
147 known to have come from a single household and the third occurred around the same time but  
148 was not known to be otherwise linked. Several mutations within the VP1-3 genes were noted  
149 to be over-represented in the sequences derived from patients with hepatitis when compared  
150 with reference sequences (**Figure 4c**). Notably, 9 of the capsid gene mutations over-

151 represented in these cases (V151A, R447K, T450A, Q457M, S492A, E499D, F533Y, R585S  
152 and R588T) are associated with a sub-lineage of AAV2 (AAVv66) that has an altered  
153 phenotype, including substantial evasion of neutralising antibodies directed against wild-type  
154 AAV2, enhanced production yields, reduced heparin binding and increased virion stability.  
155 Intrathecal injection of AAVv66 in mice resulted in widespread CNS transduction compared  
156 with more localised spread in mice injected with wildtype AAV2.<sup>8</sup>

157

158 HAdV was detected in 3/9 plasma samples, 3/4 liver biopsies, 2/6 throat swabs, 4/7 faecal  
159 samples and 1/1 rectal swab (**Figure 2b; Supplementary Table 3**). The lower detection of  
160 HAdV by PCR compared to enrichment sequencing likely reflects slightly lower sensitivity of  
161 the PCR assay. However low numbers of positive samples using both assays may reflect the  
162 fact that plasma is a suboptimal sample type for HAdV detection (whole blood samples were  
163 unavailable). A full genome of HAdV-F41 was retrieved from a faecal sample (accession  
164 number pending) and was found to be closest to two genomes reported from Germany in 2019  
165 and 2022 (**Figure 2b**). As described above, HHV6B was detected at low read number (0.41-  
166 3.89 reads per million) in 3 out of 4 plasma samples (**Figure 3a, Supplementary Table 4**).  
167 The remaining clinical samples were excluded from analysis for HHV by sequencing because  
168 murine CMV had been added as an extraction control during routine clinical investigation. All  
169 9 plasma samples tested negative by PCR for HHV6, HSV, CMV and EBV. Two liver biopsy  
170 specimens tested positive for HHV6 (Ct 33 and 36). Contigs matching to other known human  
171 pathogens, including human coronavirus NL63, rhinovirus C, enterovirus B, human  
172 parainfluenza virus 2 and 3, norovirus, as well as other beta- and gammaherpesviruses were  
173 also detected although not consistently across cases (**Supplementary Table 2**). These were  
174 detected by both sequencing and PCR.

175



176 To investigate the presence of AAV2 and the candidate helper viruses HAdV and HHV6B in  
177 case samples, we undertook a series of case-control studies using plasma by sequencing and  
178 by real-time PCR (**Figures 2b-e, 3a**). Higher read counts of HAdV ( $p=0.0545$ ), AAV2  
179 ( $p<0.001$ ) and HHV6B ( $p=0.0059$ ) were found in cases versus healthy controls  
180 (**Supplementary Figures 1a,1b**). Metagenomic and target enrichment sequencing from the 13  
181 age-matched healthy control samples (group 1) revealed no evidence of AAV2, HAdV or  
182 HHV6B in plasma, although low read counts of EBV, CMV and HHV6A were detected  
183 (**Figure 3a, Supplementary Figure 1c-j**). 12 HAdV-infected controls (10 diagnosed by  
184 nasopharyngeal aspirate, 1 by nose swab and 1 by stool) with normal liver function (group 2)  
185 were found to have no evidence of AAV2. HAdV reads were also detected in 6/12  
186 plasma/serum samples, and 9/12 of this group had a herpesvirus detected, including 2/12 with  
187 detectable numbers of HHV6B reads (1050-5062 reads per million), confirmed by PCR  
188 (**Figure 2a; Supplementary Table 6; Supplementary Figure 1**). In keeping with the  
189 possibility of reactivation of HHV6B, 6/12 of this control group had been admitted to hospital  
190 with a critical illness.

191

### 192 *Real-time PCR*

193 To quantify the level of AAV2 and to further investigate the presence of the helper viruses  
194 HAdV and HHV6B, we carried out real-time PCR in case plasma and control sera/plasma. We  
195 also included a third control group of patients with hepatitis of alternative aetiology, half of  
196 whom had been admitted to critical care (**Figures 2c-e**). Significance differences between  
197 groups for Ct values and viral loads/ml of plasma were calculated using the Mann-Whitney  
198 test. AAV2 PCR of plasma from 9/9 cases was positive with a median estimated copy number  
199 of 8,058,879 copies/ml (**Figure 2c; Supplementary Figure 2**). 2/9 case plasma were positive

200 for HAdV-F41 by PCR (**Figure 2d**), and all tested negative by PCR for HHV6 DNA (**Figure**  
201 **2e**).

202

### 203 *SARS-CoV-2 infection*

204 Routine clinical investigation detected SARS-CoV-2 nucleic acid in nasopharyngeal samples  
205 from 2/9 children, one of whom was also seropositive. The other developed infection after the  
206 onset of hepatitis. SARS-CoV-2 was not detected by PCR and sequencing in any clinical  
207 samples, including liver samples, in cases or controls. Nevertheless, to investigate the  
208 possibility that unexplained hepatitis in children might relate to a preceding SARS-CoV-2  
209 infection or other seasonal coronaviruses, we carried out serology. IgG antibody titres were  
210 measured quantitatively against SARS-CoV-2 trimeric spike (S) protein, N-terminal domain  
211 (NTD), receptor binding domain (RBD) and nucleocapsid (N), and the human seasonal  
212 coronaviruses (HCoV) 229E, OC43, NL63 and HKU1. Electrochemiluminescence assay  
213 (MSD-ECL) for coronavirus-specific IgG revealed high levels of prior exposure to seasonal  
214 coronaviruses; NL63 (9/9) and OC43 (7/9) (**Supplementary Figure 3a**). In comparison,  
215 plasma from 5/9 children displayed reactivity with HKU1 and 3/9 with 229E. Plasma from  
216 three children reacted with SARS-CoV-2 N, a fourth was considered weak positive in  
217 comparison with the reference range of known negative individuals (**Supplementary Figure**  
218 **3b**). This child was one of 3/4 of the N-positive children displaying reactivity with S, NTD and  
219 RBD, confirming likely SARS-CoV-2 exposure. Plasma from the fourth child reacted with N  
220 only, while plasma from an additional two children reacted with S, NTD and RBD only (no N  
221 reactivity) in keeping with exposure to natural infection in the absence of vaccination. In  
222 summary, 6/9 (67%) of the children displayed evidence of prior exposure to SARS-CoV-2; this  
223 level was comparable to SARS-CoV-2 seroprevalence in children aged 5-11 years in Scotland

224 between 14<sup>th</sup> March and 4<sup>th</sup> April 2022 (time period when clinical samples of cases were  
225 obtained), reported as between 59% (95% CI 50.6-71.2) and 67% (56.2-77.6%).<sup>9</sup>

226

### 227 *HLA typing*

228 To investigate the possibility that some children might be more susceptible to non-A-E  
229 hepatitis, cases and local controls (all of white ethnicity) were genotyped using high resolution  
230 typing for all HLA loci (HLA-A, B, C, DRB1, DRB3/4/5, DQA1, DQB1, DPA1 and DPB1)  
231 using the AllType™ FASTplex™ NGS Assay (One Lambda). We analysed HLA allele  
232 positivity in the nine cases plus an additional 11 ISARIC CCP-UK study patients (n=20 in  
233 total) compared to 64 Scottish platelet apheresis donor controls. Associations were observed  
234 for the following alleles; DRB1\*04:01 (OR 11.8 (95% CI 4.43-32.13),  $p = 1.19 \times 10^{-9}$ ),  
235 DQA1\*03:03 (OR 10.64 (4.07-28.18),  $p = 3.8 \times 10^{-9}$ ) and DQB1\*03:01 (OR 6.16 (2.49-15.21),  
236  $p = 3.75 \times 10^{-6}$ ). The strength of associations and the known linkage disequilibrium between  
237 HLA-DRB1\*04:01 and associated alleles at other HLA loci indicates that DRB1\*04:01 is the  
238 primary HLA associated allele. In patients, the HLA-DRB1\*04:01 allele frequency was 0.50  
239 and in local controls was 0.078. As a further reference, in 599,410 British/Irish North-West  
240 European (BINWE) individuals on the Anthony Nolan register, the frequency of DRB1\*04:01  
241 is 0.114.<sup>10</sup> Of the nine patients in which metagenomic and target enrichment sequencing was  
242 undertaken, 8/9 carried the HLA-DRB1\*04:01 allele and one carried the HLA-DR4 allele,  
243 DRB1\*04:07.

244

### 245 **Conclusions/final statements**

246 AAV2 detected independently by sequencing and by real-time PCR was present at significantly  
247 higher frequency in cases of paediatric non-A-E hepatitis than controls. That this occurs in the  
248 context of an increased frequency of the DRB1\*04:01 allele when compared to a local blood

249 donor control population requires further investigation, but points to a T helper cell-mediated  
250 pathological response triggered by exposure to HAdV and/or AAV2 infection.

251

252 AAV2 is a small non-enveloped single-stranded DNA virus of 4,675 nucleotides belonging to  
253 the species adeno-associated dependoparvovirus A (genus Dependoparvovirus, family  
254 Parvoviridae)<sup>11</sup>, first described in 1965 and occurs in up to 80% of the adult population,  
255 seroconversion occurring in early childhood following respiratory infection<sup>12</sup>. In one  
256 prospective study in the USA, the earliest seroconversion to AAV2 infection occurred in a 9-  
257 month-old child and the seroprevalence increased from 24.2% to 38.7% in 3 and 5-year-old  
258 children, respectively<sup>13</sup>. This age range coincides with that of the cases in this study, raising  
259 the possibility of illness relating to primary infection rather than reactivation.  
260 Dependoparvoviruses rely on coinfection with a helper virus for replication, most commonly  
261 HAdV or a herpesvirus. The majority of clinical samples taken at presentation with hepatitis  
262 were obtained more than 20 days after initial symptom onset, which could explain the absence  
263 of a helper virus in some samples, and low viral loads (high Ct value) in positive samples. We  
264 detected two candidate helper viruses at low level in the cases; HAdV and HHV6B in 6/9 and  
265 3/9 cases respectively (HHV6 was detected only by NGS at very low read counts and was not  
266 confirmed by PCR in any of the cases). HHV6B was also present in two control groups that  
267 included children with severe HAdV infection and children with hepatitis of alternative  
268 aetiology. As HHV-6 can establish latency and can integrate its genome into the human  
269 chromosome, it may reactivate following concomitant illness (or immunosuppression) and may  
270 represent either an opportunistic bystander or a pathogen.

271

272 We hypothesise that AAV2 may be directly implicated in the pathology of non-A-E hepatitis  
273 in children, following transmission as a co-infection with HAdV (or HHV6, although this is

274 much less likely) or as a result of reactivation following HAdV or HHV6 infection. Class II  
275 HLA type may contribute to disease susceptibility. In keeping with an immune-mediated  
276 aetiology directed against AAV2-infected hepatocytes, hepatitis associated with the emergence  
277 of a CD8<sup>+</sup> cell-mediated response directed against the AAV2 viral capsid (VP1) was reported  
278 in early trials of AAV2 when used as a vector for gene therapy.<sup>14-16</sup> An alternative explanation  
279 is that AAV2 may be a useful biomarker of infection with HAdV (that may be the primary  
280 pathogen) that persists for a shorter time than AAV2. Most of our cases developed  
281 gastroenteritis symptoms (vomiting and diarrhoea) lasting several days, several weeks before  
282 the onset of jaundice. The opportunity to detect virus by sequencing was therefore likely  
283 reduced, as these samples were collected at a later stage. Further, whole blood samples would  
284 have been likely to increase the sensitivity of detection, but only plasma samples were  
285 available. We consider this alternative hypothesis to be less likely because we did not detect  
286 AAV2 in a control group of children with HAdV infection who had normal liver function.

287

288 HAdV41 is a common cause of diarrhoea in young children<sup>17</sup> and adenovirus-associated  
289 hepatitis has been described, particularly among immunocompromised individuals.<sup>18</sup> However,  
290 it has not previously been associated routinely with severe hepatitis. In the recent outbreaks of  
291 unexplained hepatitis in children, it has been inconsistently reported.<sup>4-6,19-21</sup> HHV6B is a human  
292 herpesvirus that is associated with the childhood illness roseola infantum (sixth disease) and a  
293 self-limiting otherwise non-specific febrile illness.<sup>22</sup> Seroconversion usually occurs by 2 years  
294 of age and hepatitis occasionally occurs in immunocompetent individuals.

295

296 We investigated the possibility that unexplained cases of hepatitis may be linked to prior  
297 COVID-19 infection. Direct SARS-CoV-2 liver injury seems unlikely, since few of our cases  
298 (2 of 9) were SARS-CoV-2 PCR-positive on admission, and we did not identify SARS-CoV-

299 2 by PCR or sequencing in any of the clinical samples from cases, including liver biopsies.  
300 Further, the SARS-CoV-2 antibody positivity in hepatitis cases was within community  
301 positivity rates at that time.<sup>3</sup> This is in keeping with a case-control analysis by UKHSA  
302 reporting no difference in SARS-CoV-2 PCR positivity between hepatitis cases and children  
303 presenting to emergency departments between January and June 2022.<sup>3</sup> Nevertheless, we  
304 cannot fully exclude a post-COVID-19 immune-mediated phenomenon in susceptible children.

305

306 There are several limitations to this study. Firstly, the presence of AAV2 in cases but not  
307 controls may have arisen due to seasonal variation in AAV2 transmission, as some controls  
308 were sampled earlier than cases. Secondly, the presence of AAV2 in cases is an association  
309 and may not represent direct aetiology; rather the AAV2 may be a useful biomarker of recent  
310 HAdV (or less likely HHV6B) infection. We do not consider it likely that AAV2 simply  
311 represents a marker of liver damage because it was not present in cases of severe hepatitis of  
312 alternative aetiology. Thirdly, while the strong association of the HLA-DRB1\*04:01 allele,  
313 known to be associated with autoimmune hepatitis<sup>23</sup> and extra-articular manifestations of  
314 rheumatoid arthritis,<sup>24</sup> may represent a disease susceptibility gene, local population structure  
315 could result in an over-estimate of significance. Nonetheless it is plausible that an HAdV  
316 infection, along with a coinfecting or reactivated AAV2 infection has resulted, for a proportion  
317 of children who are more susceptible (due to the class II HLA allele HLA-DRB1\*04:01), in a  
318 more severe outcome than might normally be expected for these commonly circulating viruses.  
319 The recent clustering of cases may have arisen in part because of changes in exposure pattern  
320 to HAdV, AAV2 and HHV6B as a result of the COVID-19 pandemic. Faecal HAdV usually  
321 follows seasonal trends with maximal rates of detection in younger age groups. However, the  
322 circulation of respiratory viruses was interrupted in 2020 by the implementation of non-  
323 pharmaceutical interventions, including physical distancing and travel restrictions, instituted

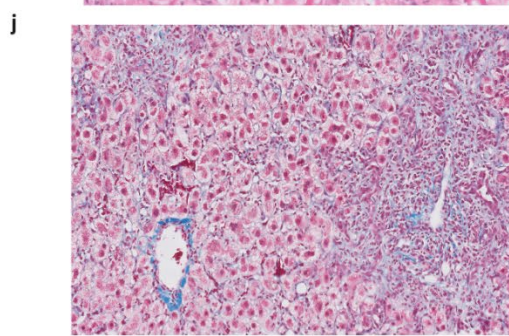
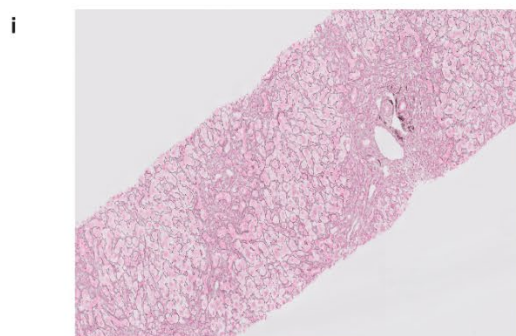
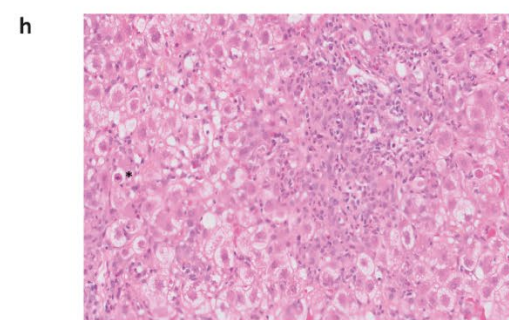
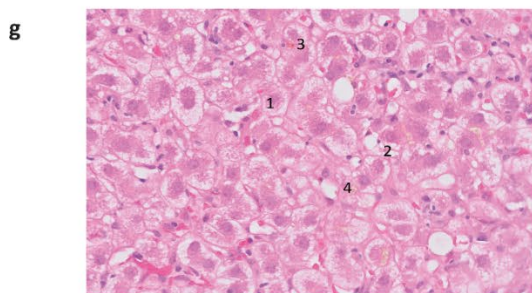
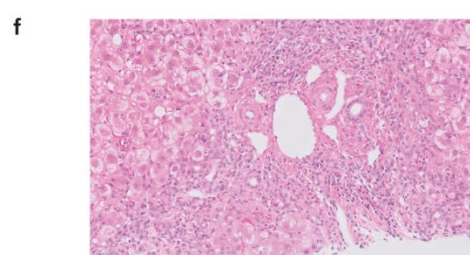
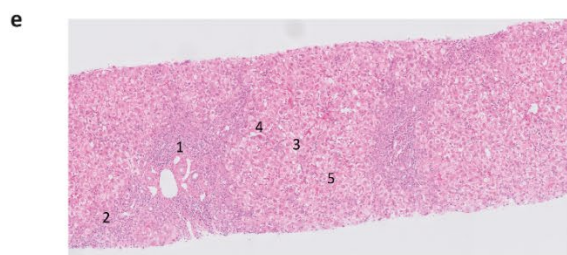
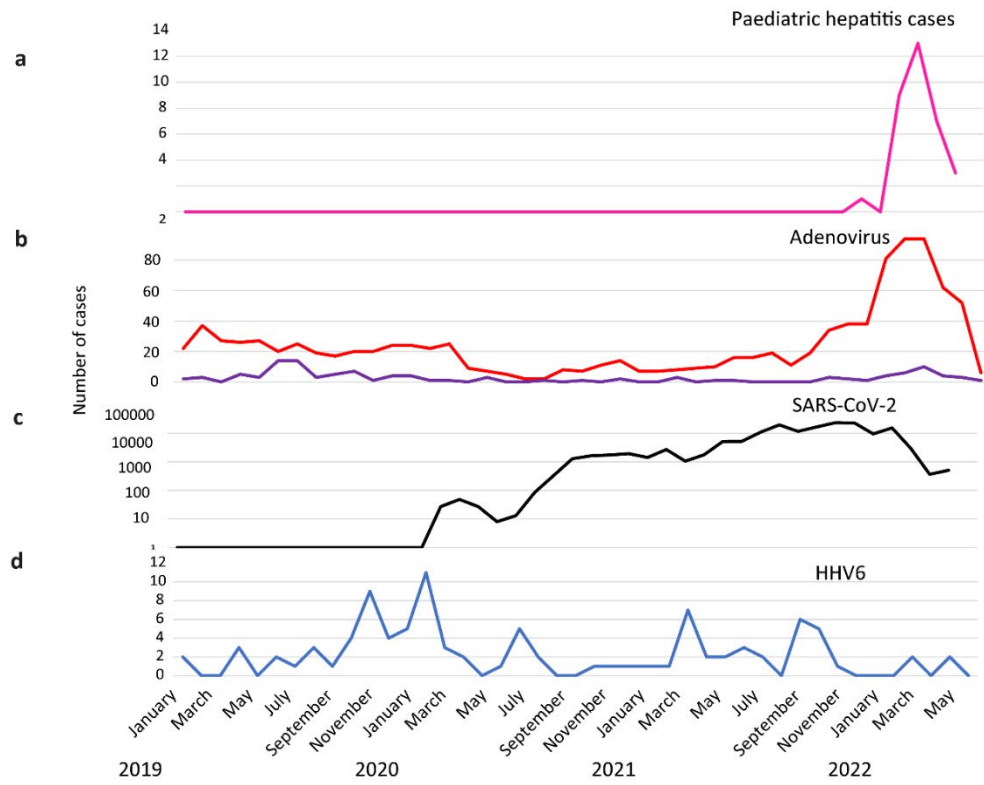
324 to mitigate SARS-CoV-2 transmission. These measures may have created a pool of susceptible  
325 younger children, resulting in much higher rates of HAdV and potentially AAV2 circulation in  
326 this population of naïve children when the COVID-19 restrictions were relaxed.

327

328 Larger case-control studies are urgently needed to investigate the role of AAV2, HAdV,  
329 HHV6B and HLA type in the aetiology of unexplained non-A-E paediatric hepatitis.  
330 Retrospective testing of samples from cases of unexplained hepatitis in children is also  
331 indicated. Ongoing work to measure IgM and IgG responses against AAV2, HAdV and  
332 HHV6B may help to delineate whether the AAV2 has been acquired as a primary co-infection  
333 or reactivation.



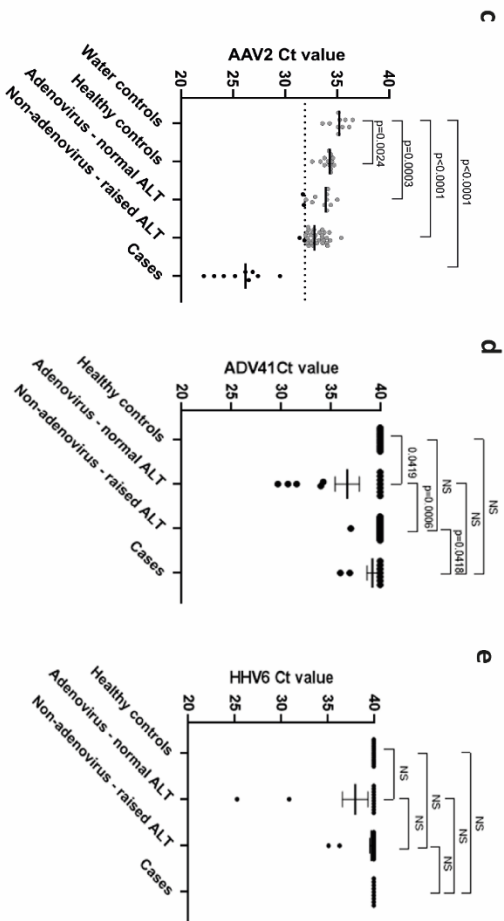
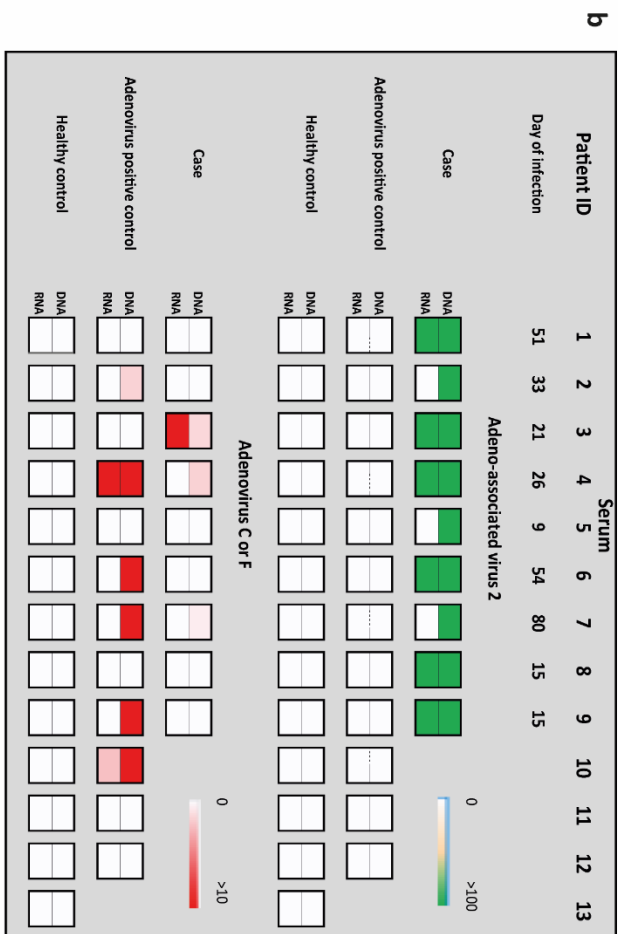
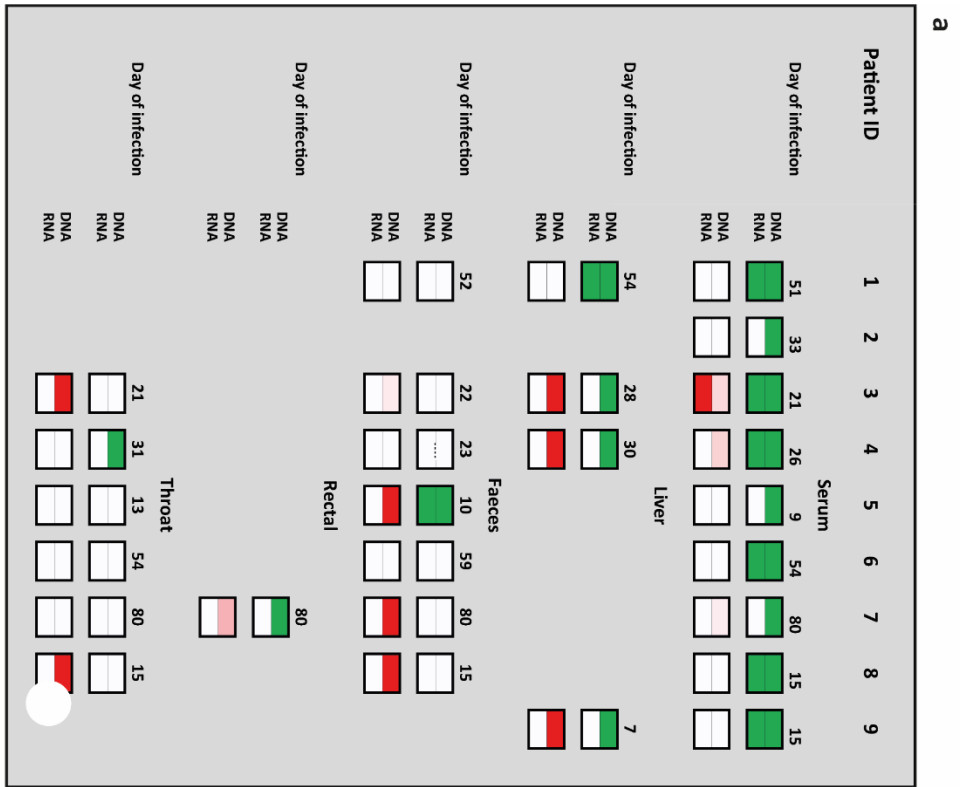
334 **Figures**  
335



336



337 **Figure 1: Epidemiology and histology of liver biopsies in Scottish children with AAV2**  
338 **and HAdV-associated hepatitis (a) Emergence of acute non-A to E hepatitis in children**  
339 Cases of non-A-E hepatitis in children 10 years and under in Scotland, 11 January to 20 June  
340 2022 (pink).<sup>3</sup> Cases of HAdV (children <5 years: red, children 5-10 years: purple) **(b)**, SARS-  
341 CoV-2 (black) **(c)** and HHV6 (blue) **(d)** in children aged 10 years and under in Scotland January  
342 2019 to June 2022. The histology of Case 3 (CVR3) is shown in panels **(e-j)**. A low-power  
343 liver biopsy image **(e)** showing expansion of the portal tracts by inflammatory cells (1),  
344 interface hepatitis (2), feathering (ballooning) change of hepatocytes (3) and apoptotic  
345 hepatocytes (4). Mild steatosis is present in some zone 2 hepatocytes (5). A medium power  
346 view of the same biopsy **(f)** illustrates an affected portal tract showing a mixed infiltrate of  
347 inflammatory cells (lymphocytes, plasma cells, eosinophils and neutrophils). Vessels and bile  
348 ducts are preserved. A high-power picture **(g)** of the liver parenchyma showing feathering  
349 (ballooning) change in the hepatocytes (1), focal mild steatosis (2), focal bile canaliculi  
350 plugging (3) and lipofuscin pigment (4). An apoptotic hepatocyte **(h)** is highlighted with an  
351 asterisk \*. A reticulin stain of the same biopsy **(i)** highlights an increased density of fibres in  
352 areas of inflammation and some change of the zone 2 parenchyma. A Masson trichrome stain  
353 showing collagen in blue **(j)** within portal tracts and mild staining extending around some  
354 hepatocytes.  
355  
356



357

358

359 **Figure 2. (a) Heatmap of HAdV and AAV-2 reads detected in hepatitis cases by target**  
360 **enrichment sequencing.** Samples obtained for routine clinical investigation (plasma, liver,  
361 faeces, rectal and throat swab) were retrospectively sequenced following DNA or RNA  
362 extraction. AAV2 read counts are shown from 0->100 reads/million in green (upper row) and  
363 HAdV read counts are shown from 0->10 reads/million in red (lower row). **(b) Heatmap of**  
364 **viral reads from plasma in cases and plasma/sera from controls.** Plasma samples from  
365 cases, and plasma or sera samples from children with HAdV infection and age-matched  
366 healthy controls were sequenced following DNA or RNA extraction. AAV2 read counts are  
367 shown from 0->100 reads/million in green and HAdV read counts are shown from 0->10  
368 reads/million in red. The number of days between initial symptom onset and sample are  
369 indicated. **(c) AAV2 real-time PCR** in cases versus controls. The estimated detection limit  
370 of the assay (Ct=31.9) is shown (dotted line) Error bars represent median. Statistical analysis  
371 was performed using Mann-Whitney test. **(d) HAdV41 real-time PCR** in cases versus  
372 controls. **(e) HHV6 real-time PCR** in cases versus controls.

373

374

375

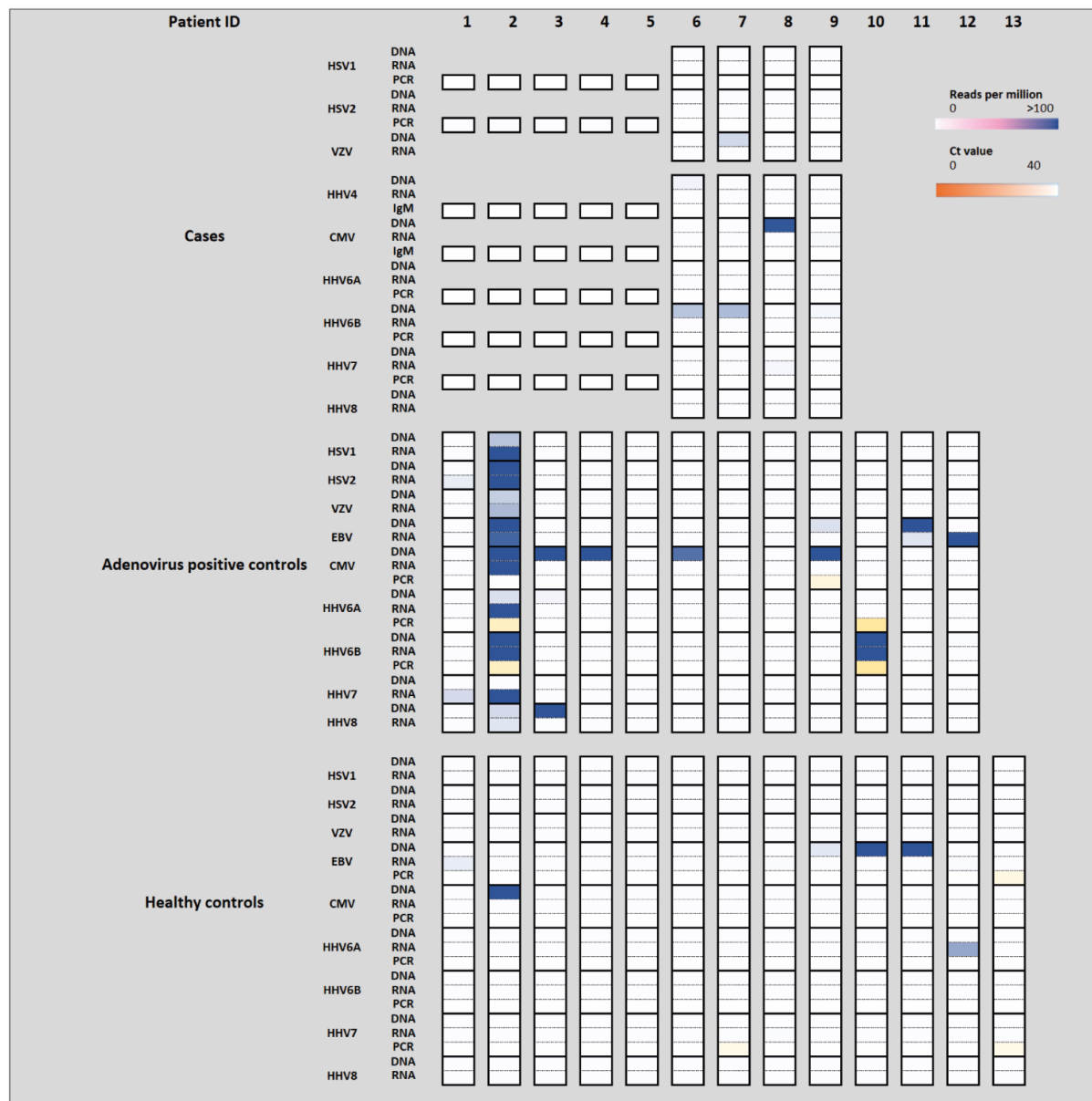
376

377

378

379

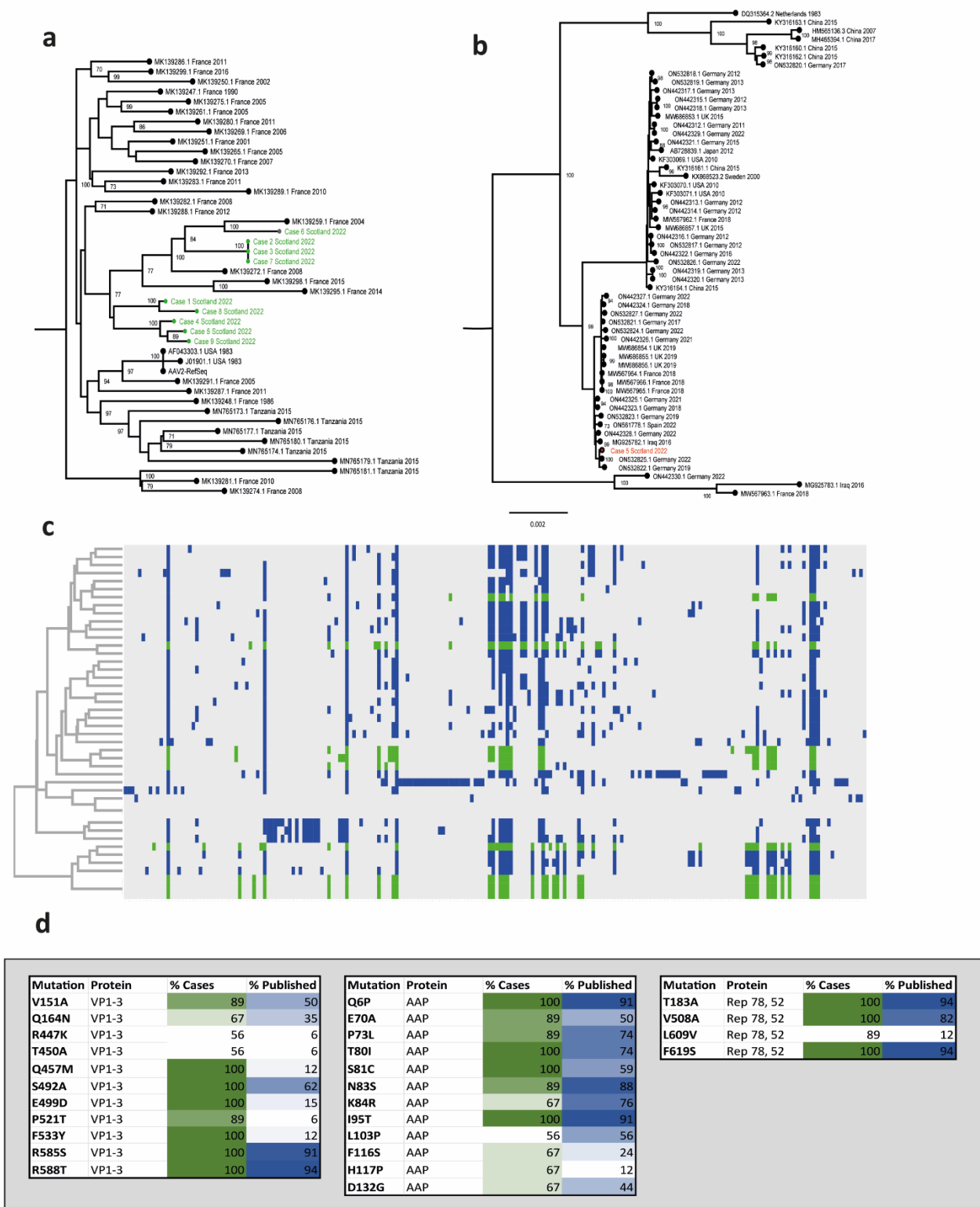
380



381

382

383 **Figure 3 Herpesviruses detected in cases and controls. (a)** Results are shown from target  
 384 enrichment sequencing, PCR and IgM serology. Sequencing read counts are shown in blue as  
 385 a heatmap from 0-100 reads per million. Ct values are highlighted in orange from 0-40. As  
 386 the plasma samples from patients 1-5 had a Murid herpesvirus as a spike in control, the  
 387 herpesvirus content of these samples was not analysed.



388

389 **Figure 4 (a) Phylogeny of AAV2 genomes from cases 1-9.** The nine AAV2 genome  
 390 sequences generated from the plasma samples via target enrichment (highlighted in red) were  
 391 aligned with a range of the closest AAV sequences from La Bella *et al.*<sup>25</sup> and Cordey *et al.*<sup>26</sup>  
 392 IQ-TREE 2 was used to find the optimal model (TIM+F+R3) and create a maximum

393 likelihood (ML) phylogenetic tree with 1000 bootstrap replicates (displayed on the branches).  
394 The tree is midpoint rooted. AAV2 reference sequences are denoted by accession number,  
395 country and year of sampling **(b) Phylogeny of HAdV41 genome from case 5** A near-full  
396 HAdV41 genome sequence from the faecal sample of patient 5 (highlighted in red) was  
397 combined with complete genomes of HAdV41 from GenBank. After alignment with  
398 MAFFT, IQ-TREE 2 was used to determine the optimal evolutionary model (K2P+R2) and  
399 to construct a ML phylogenetic tree with 1000 bootstrap replicates. The tree is midpoint  
400 rooted. HAdV41 reference sequences are denoted by accession number, country and year of  
401 sampling. **(c) Key mutations and hierarchical clustering of AAV2 genomes** Mutations in  
402 published AAV2 sequences are highlighted in (blue) and case sequences (green) **(d)**  
403 **Mutations over-represented in cases versus controls** Mutations in VP1-3, Rep78 and 52  
404 and AAP are highlighted by % representation in case sequences (green) and published  
405 sequences (blue)  
406  
407

## 408 **Methods**

### 409 *ISARIC CCP-UK recruitment & DIAMONDS/ study*

410 Ethical approval for the ISARIC CCP-UK study was given by the South Central–Oxford C  
411 Research Ethics Committee in England (13/SC/0149), the Scotland A Research Ethics  
412 Committee (20/SS/0028), and the WHO Ethics Review Committee (RPC571 and RPC572).  
413 Children aged <16 years were recruited by written informed consent (parent or guardian) from  
414 the ISARIC WHO CCP-UK cohort admitted to hospital with elevated transaminases (defined  
415 as ALT >400 iU/L and/or AST >400 iU/L) that was not due to viral hepatitis A-E, autoimmune  
416 hepatitis or poisoning. Control samples were obtained from children (aged <16 years) recruited  
417 to the Diagnosis and Management of Febrile Illness using RNA Personalised Molecular  
418 Signature Diagnosis (DIAMONDS), an ongoing multi-country study that aims to develop a  
419 molecular diagnostic test for the rapid diagnosis of severe infection and inflammatory diseases  
420 using personalised gene signatures (ISRCTN12394803). Ethical approval was given by  
421 London-Dulwich Research Ethics Committee (20/HRA/1714). Controls included healthy  
422 controls (n=13), children with PCR-confirmed adenoviral infection with normal transaminases  
423 (n= 12), and children with raised transaminases without adenoviral infection (n=33), recruited  
424 between 19 May 2020 to 8 January 2022.

425

### 426 *Viral PCR*

427 **RNA extraction** was carried out using the Biomerieux Easymag generic protocol. 300ul of  
428 plasma or sera was extracted and eluted into 80 ul of water.

429 **AAV2 quantitative PCR** was performed to detect a 62bp amplicon of the AAV2 inverted  
430 terminal repeat region (ITR) as previously described<sup>27</sup> using the forward ITR primer 5'-

431 GGAACCCCTAGTGATGGAGTT-3') and the reverse ITR primer 5'-  
432 CGGCCTCAGTGAGCGA-3'). The AAV2 ITR hydrolysis probe was labelled with fluorescein  
433 (6FAM) and quenched with Black Hole quencher (BHQ) 5'-[6FAM]-  
434 CACTCCCTCTCTGCGCGCTCG-[BHQ1]3'). AAV2 primers and probe were synthesised by  
435 Merck Life Sciences UK Limited, United Kingdom. Quantitative PCR analysis was performed  
436 using the ABI7500 Fast Real-Time PCR system (Applied Biosystems). LUNA Universal One-  
437 Step RT PCR kit (New England Biolabs) was used for the amplification and detection of the  
438 AAV2 ITR target. qPCR reactions were performed in a 20µl volume reaction (Luna Universal  
439 One-Step reaction mix, Luna WarmStart RT enzyme mix, 400nM forward and reverse primers,  
440 200nM AAV2 ITR probe and 1-2.5µl of template DNA) as per manufacturer's instructions. To  
441 quantify the number of copies, serial dilutions of plasmid containing the 62bp ITR product  
442 were used to generate a standard curve which was then used to interpolate the copy number of  
443 AAV2 copies in the samples. Wells with no template were used as negative controls. qPCR  
444 reactions were performed in triplicate. The qPCR program consisted of an initial reverse  
445 transcription step at 55 C for 10 minutes, an initial denaturation at 95 C for 1 minute followed  
446 by 45 cycles 95 C denaturation for 10 seconds and extension at 58 C for 1 minute. A qPCR  
447 detection limit of 31.9 was calculated as the threshold Ct value at the last dilution of DNA  
448 standards that were within the linear range.

449  
450 The West of Scotland Specialist Virology Centre, NHS Greater Glasgow and Clyde conducted  
451 diagnostic real-time PCR with reverse transcription to detect HAdV, SARS-CoV-2-positive  
452 samples and other viral pathogens associated with hepatitis (e.g. Hepatitis A-E), following  
453 nucleic acid extraction utilizing the NucliSENS easyMAG and Roche MG96 platforms.  
454 HHV6<sup>28</sup> and HAdV41<sup>29</sup> were tested by qPCR as previously described using Invitrogen  
455 platinum qPCR mix (Cat no 11730-025) and Quanta Biosciences qPCR mix Mastermix



456 (Cat.No. 733-1273) respectively on an ABI7500 and amplified for 40 cycles. A 6ul extract was  
457 amplified in a total reaction volume of 15ul.

#### 458 ***Measurement of antibody response to coronaviruses by electrochemiluminescence***

459 IgG antibody titres were measured quantitatively against SARS-CoV-2 trimeric spike (S)  
460 protein, N-terminal domain (NTD), receptor binding domain (RBD) or nucleocapsid (N), and  
461 the human seasonal coronaviruses (HCoV) 229E, OC43, NL63 and HKU1 using MSD V-  
462 PLEX COVID-19 Coronavirus Panel 2 (K15369) and Respiratory Panel 1 (K15365) kits.  
463 Multiplex Meso Scale Discovery electrochemiluminescence (MSD-ECL) assays were  
464 performed according to manufacturer instructions. Samples were diluted 1:5000 in diluent and  
465 added to the plates along with serially diluted reference standard (calibrator) and serology  
466 controls 1.1, 1.2 and 1.3. Plates were read using a MESO Sector S 600 plate reader. Data were  
467 generated by Methodological Mind software and analysed using MSD Discovery Workbench  
468 (v4.0). Results are expressed as MSD arbitrary units per ml (AU/ml).

469

#### 470 ***Metagenomic sequencing***

471 Residual nucleic acid from 27 samples (9 patients with a combination of plasma, liver, faeces,  
472 rectal and throat/nose samples), 12 HAdV-positive and 13 healthy controls (control samples  
473 were either plasma or sera) underwent metagenomic next-generation sequencing at the CVR.  
474 Briefly, each nucleic acid sample was split in two library preparations, to improve the chances  
475 of detecting RNA and DNA viruses. The protocol applied for improved detection of RNA  
476 viruses included treatment with DNaseI (Ambion DNase I, ThermoFisher), ribosomal  
477 depletion (Ribo-Zero Plus rRNA Depletion Kit, Illumina), except for plasma samples, reverse  
478 transcription (SuperScript III, Invitrogen) and double-strand DNA synthesis (NEBNext®  
479 Ultra™ II Non-Directional RNA Second Strand Synthesis Module, NEB). The protocol

480 applied to detect DNA viruses included partial removal of host DNA (NEBNext® Microbiome  
481 DNA Enrichment Kit, NEB). Following this, both sets of samples were used to prepare libraries  
482 using the KAPA LTP kit (Roche) with unique dual indices (NEBNext® Multiplex oligos for  
483 Illumina, NEB). The resulting libraries were pooled in equimolar amounts and sequenced using  
484 a NextSeq500 (Illumina) to obtain paired end reads using 150X150 cycles.

485

#### 486 *Target enrichment sequencing*

487 Following on the library preparation step described above, DNA and RNA derived libraries  
488 were pooled separately and were incubated with the VirCapSeq-VERT Capture Panel probes  
489 (Roche) following the manufacturer's guidelines. The Roche VirCapSeq-VERT Capture Panel  
490 covers the genomes of 207 viral taxa known to infect vertebrates (including humans). Enriched  
491 DNA and RNA- derived libraries were further amplified using 14 PCR cycles, pooled and  
492 sequenced using a NextSeq500 (Illumina) to obtain paired end reads using 150X150 cycles.

493

#### 494 *Bioinformatics analysis*

495 Reads for each sample were first quality checked, Illumina adapters were trimmed using Trim  
496 Galore (<https://github.com/FelixKrueger/TrimGalore>), and reads were then mapped to the  
497 human genome using BWA-MEM (<https://github.com/lh3/bwa>). Only reads that did not map  
498 to the human genome were used for metagenomic analyses. Non-human reads were then *de*  
499 *novo* assembled using MetaSPAdes (<https://github.com/ablab/spades>) to generate contigs for  
500 each sample. Contigs were then compared against a protein database of all NCBI RefSeq  
501 organisms (including virus, bacteria, eukaryotes) with BLASTX using DIAMOND  
502 (<https://github.com/bbuchfink/diamond>). In addition, non-human reads for each sample were

503 aligned to a small panel of HAdV NCBI RefSeq genomes (HAdV-A, B1, B2, C, D, E, F, 1, 2,  
504 5, 7, 35, 54 as well as HAdV-F41).

505

506 The nine AAV2 near-complete genome contigs from the plasma samples were assembled and  
507 were compared with sequences in GenBank using BLASTN (nt database); each AAV2 had  
508 numerous close hits (exhibiting >95% similarity across 95% of the genome) with various  
509 existing AAV2 sequences, those most closely related were reported in a recent publication<sup>25</sup> A  
510 representative range of AAV2 sequences were selected and combined with the AAV sequences  
511 *de novo* assembled here, aligned with MAFFT, the terminal ends of the alignment were  
512 trimmed off, and IQ-TREE 2 was used (TIM+F+R3 model) to infer a phylogenetic tree. For  
513 the single HAdV41 genome *de novo* assembled, all available HAdV41 complete genomes were  
514 downloaded from GenBank aligned with MAFFT, and IQ-TREE2 was used (K2P+R2 model) to  
515 infer a phylogenetic tree.

516

## 517 **HLA typing**

518 High resolution typing for all HLA loci (HLA-A, B, C, DRB1, DRB3/4/5, DQA1, DQB1,  
519 DPA1 and DPB1) was performed using AllType™ FASTplex™ NGS Assay (One Lambda)  
520 run on an Illumina Mi-Seq platform. HLA typing was undertaken on 20 ISARIC consented  
521 patients. One patient was omitted from analysis as they were a sibling of another case. HLA  
522 types from 64 Scottish National Blood Transfusion Service apheresis platelet donors, self-  
523 identified as White British (n=15) or White Scottish (n=49) were used as control samples for  
524 comparison with patient HLA phenotype frequencies.

525

## 526 **Statistics**

527 Differences between cases and control groups were calculated using Fisher's Exact Test for  
528 categorical variables and Mann-Whitney test for continuous variables.

529

530 HLA analysis used the Bridging ImmunoGenomic Data-Analysis Workflow Gaps  
531 (BIGDAWG) R package to derive OR and corrected p values for individual HLA alleles.<sup>30</sup>  
532 Bonferroni corrected p value significance threshold, adjusted for multiple comparisons (168  
533 HLA alleles), was  $p < 3.0 \times 10^{-4}$ . Significance differences between groups for other  
534 comparisons were calculated using Mann-Whitney test or t-test as appropriate.

535

536 **Data and code availability:** available on request

537

### 538 **Funding**

539 The work was funded by Public Health Scotland, the National Institute for Health Research  
540 (NIHR; award CO-CIN-01) and the Medical Research Council (MRC; grants MC UU  
541 1201412, MC\_PC\_19059 & MC\_PC\_22004). DIAMONDS is funded by the European Union  
542 Horizon 2020 programme; grant 848196).

543

544

545

546

547 **Acknowledgements**

548 We wish to acknowledge the contribution of the participating children and their parents who  
549 agreed to participate in the ISARIC CCP-UK and DIAMONDS studies, and the research teams  
550 who recruited the patients. We also acknowledge the invaluable input of Eric J. Kremer from  
551 the Institut de Génétique Moléculaire de Montpellier, Université de Montpellier.

552

553 **Competing interest declaration**

554 The authors have no competing interests

555

556 Supplementary Information is available for this paper.

557

558 Correspondence and requests for materials should be addressed to Professor Emma C  
559 Thomson.

560 .

561 Reprints and permissions information is available at [www.nature.com/reprints](http://www.nature.com/reprints).

562

563

564 **Supplementary information**

565 **Supplementary Table 1. Characteristics of cases and controls**

	Cases (n=9)	Controls					
		Healthy (n=13)	P value*	HAdV infection with normal transaminases (N=12)	P value*	Elevated transaminases with no HAdV infection (n=33)	P value*
Sex - male	4 (44.4)	10 (76.9)	0.187	7 (58.3)	0.67	18 (52.9)	0.71
Age (years)	3.9 (3.4- 5.1)	4.1 (3.6-4.9)	0.89	1.6 (1.1-3.3)	<0.001	9.2 (6.7-13.6)	0.001
Recruitment period	14 March 2 - 4 April 2022	6 Nov 2020 - 6 Jul 2021	-	22 May 2020 - 22 Dec 2021	-	9 Sep 2020 - 8 Jan 2022	-

566 \*Fisher's exact or Mann-Whitney test

567

568

569

570

571

572

573

574

575

576

577 **Supplementary Table 2. Clinical laboratory results of the nine non-A-E hepatitis cases in**

578 **Scottish children**

Patient		1	2	3	4	5	6	7	8	9
HAdV PCR	Blood	Negative	Negative	Negative	Negative	Negative	Negative	Negative	Negative	Negative
	Throat/nose	NT	Negative	Positive (Ct 38)	Negative	Negative	Negative	Negative	Positive (Ct 30)	NT
	Stool	Negative	Negative	Negative	Negative	Positive (Ct 31)	Positive (Ct 34)	Negative	Positive (Ct 31)	NT
HAdV 41 PCR	Blood	Negative	Negative	Positive (Ct 36)	Negative	Negative	Negative	Negative	Negative	Positive (Ct 37)
Hepatitis A	IgM	Negative	Negative	Negative	Negative	Negative	Negative	Negative	Negative	Negative
	PCR	Negative	Negative	Negative	Negative	Negative	NT	NT	NT	NT
Hepatitis B	sAg	Negative	Negative	Negative	Negative	Negative	Negative	Negative	Negative	Negative
Hepatitis C	PCR	Negative	NT (IgG negative)	Negative	Negative	Negative	Negative	NT	NT	Negative
Hepatitis E	IgM	Negative	Negative	Negative	Negative	Negative	Negative	Negative	Negative	Negative
	PCR	Negative	Negative	Negative	Negative	Negative	NT	NT	NT	NT
Parvovirus B19	IgM	Negative	NT	Negative	Negative	Negative	Negative	Negative	Negative	NT
	PCR	NT	Negative	NT	NT	NT	NT	NT	NT	NT
CMV	IgM	Negative	Negative	Negative	Negative	Negative	Negative	Negative	Negative	Negative
EBV	IgM	Negative	Negative	Negative	Negative	Negative	Negative	Negative	Negative	Negative
Enterovirus PCR	Blood	Negative	Negative	Negative	Negative	Negative	NT	NT	Negative	NT
HSV PCR	Blood	Negative	Negative	Negative	Negative	Negative	Negative	Negative	Negative	Negative
HIV Ag/Ab	Blood	Negative	Negative	NT	Negative	Negative	Negative	Negative	Negative	NT
HHV6/7	Blood PCR	Negative	Negative	Negative	Negative	Negative	Negative	Negative	Negative	Negative
Respiratory viral PCR*	Throat/ nose	NT	Negative	hCoV-NL63	Negative	Paraflu 3	Paraflu 2 Rhino/EV	Negative	Rhino/EV (Ct 36)	NT
SARS-CoV-2 PCR	Throat/ nose	Negative	Negative	Negative	Negative	Positive	Positive	Negative	Negative	Negative
Liver	CMV, EBV, HSV, HHV6/7 PCR	Positive HHV6 PCR+ (Ct 33)		Negative	Positive HHV6 PCR (Ct 36)					Negative
Other sample								Stool Norovirus PCR Positive		

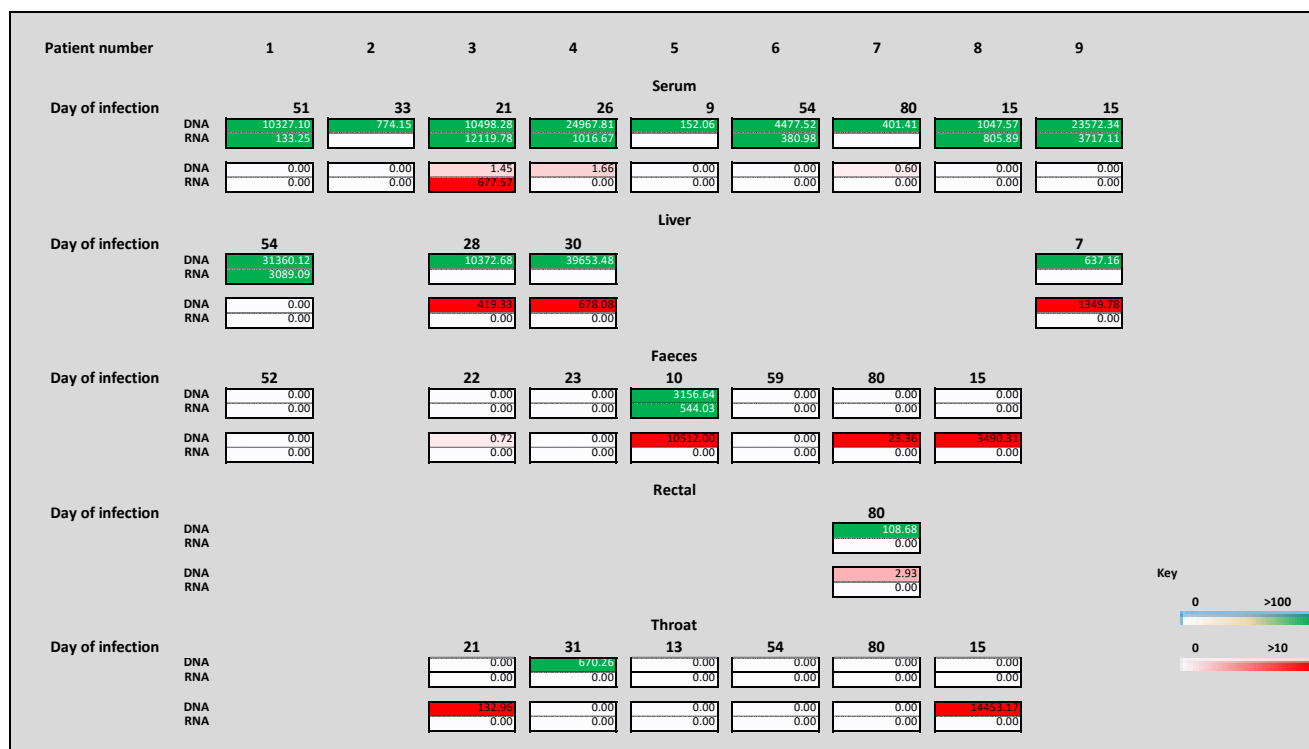
579

580 Abbreviations – PCR, polymerase chain reaction; CMV, cytomegalovirus; EBV, Epstein-Barr Virus;

581 HSV, Herpes Simplex virus, HIV, Human Immunodeficiency Virus; HHV, Human herpesvirus; PCR,

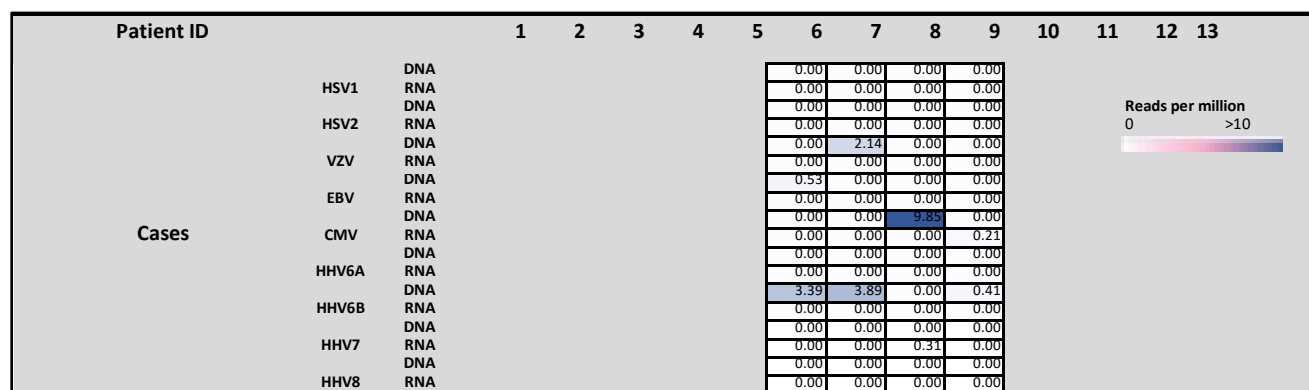
582 polymerase chain reaction; NT, not tested

583 **Supplementary Table 3 Read counts per million of AAV2 and HAdV in cases following**  
 584 **target enrichment sequencing**



585

586 **Supplementary Table 4 Read counts per million of human herpesviruses in cases**  
 587 **following target enrichment sequencing**



588

589



590 **Supplementary Table 5 Read counts per million of AAV2 and HAdV in case and**  
 591 **control sera following target enrichment sequencing**

Patient ID	1	2	3	4	5	6	7	8	9	10	11	12	13
Day of infection	51	33	21	26	9	54	80	15	15				
<b>Adeno-associated virus 2</b>													
Case	DNA	10327.10	774.15	10498.28	24967.81	152.06	4477.52	401.41	1047.57	23572.34			
	RNA	133.25	0.00	12119.78	1016.67	0.00	380.98	35.21	805.89	3717.11			
Adenovirus positive control	DNA	0.00	0.00	0.00	0.00	0.00	0.00	0.00	0.00	0.00	0.00	0.00	0.00
	RNA	0.00	0.00	0.00	0.00	0.00	0.00	0.00	0.00	0.00	0.00	0.00	0.00
Healthy control	DNA	0.00	0.00	0.00	0.00	0.00	0.00	0.00	0.00	0.00	0.00	0.00	0.00
	RNA	0.00	0.00	0.00	0.00	0.00	0.00	0.00	0.00	0.00	0.00	0.00	0.00
<b>Adenovirus C or F</b>													
Case	DNA	0.00	0.00	1.45	1.66	0.00	0.00	0.60	0.00	0.00			
	RNA	0.00	0.00	677.57	0.00	0.00	0.00	0.00	0.00	0.00			
Adenovirus positive control	DNA	0.00	1.63	0.00	29950.78	0.00	16362.76	2860.62	0.00	347.34	450.33	0.00	0.00
	RNA	0.00	0.00	0.00	13.74	0.00	0.00	0.00	0.00	0.00	2.36	0.00	0.00
Healthy control	DNA	0.00	0.00	0.00	0.00	0.00	0.00	0.00	0.00	0.00	0.00	0.00	0.00
	RNA	0.00	0.00	0.00	0.00	0.00	0.00	0.00	0.00	0.00	0.00	0.00	0.00

592

593

594 **Supplementary Table 6 Read counts per million of HHV in case and control sera**  
 595 **following target enrichment sequencing**

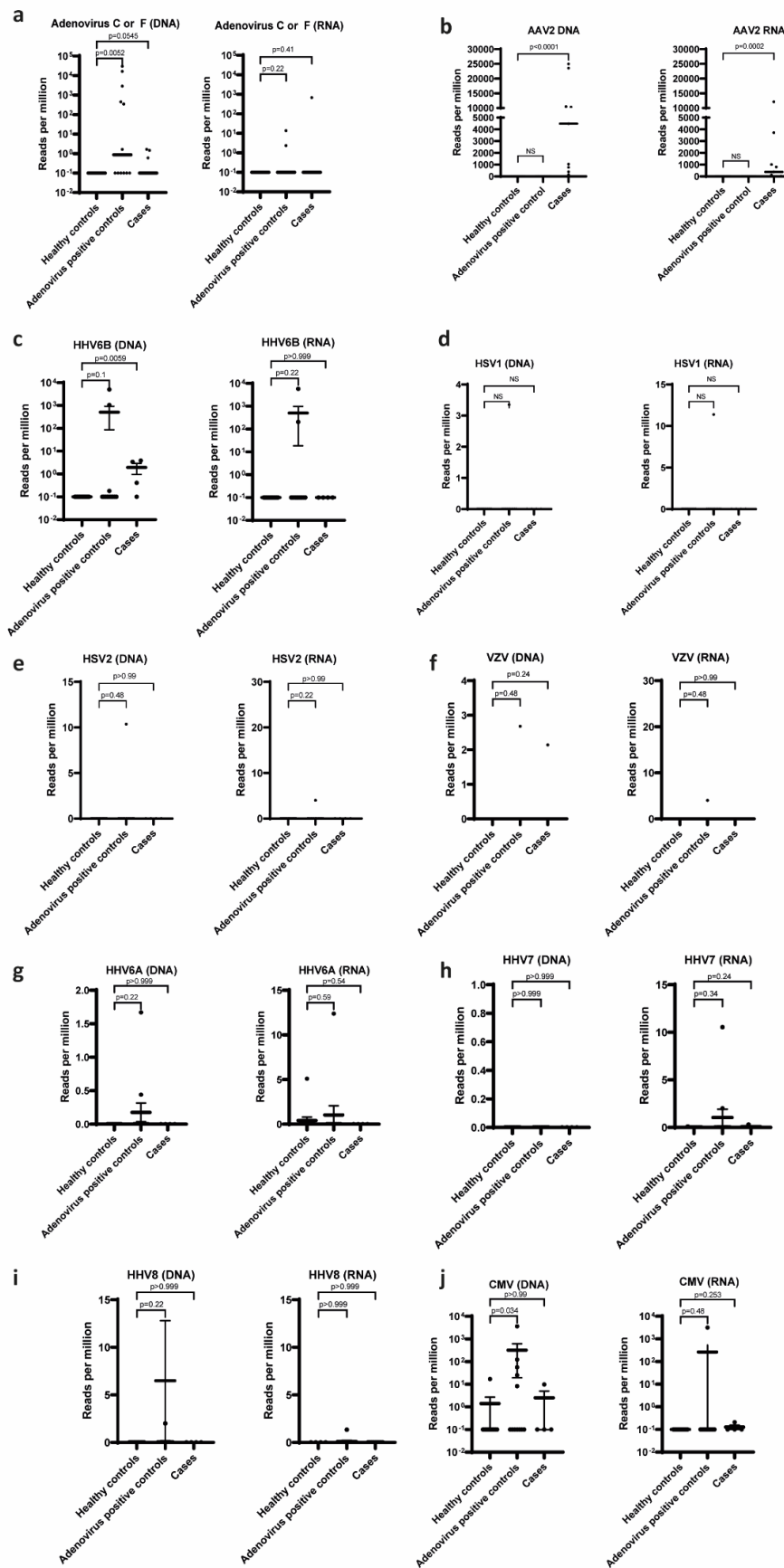
596

Patient ID		1	2	3	4	5	6	7	8	9	10	11	12	13	
<b>Cases</b>	HSV1	DNA					0.00	0.00	0.00	0.00					
		RNA					0.00	0.00	0.00	0.00					
	HSV2	DNA					0.00	0.00	0.00	0.00					
		RNA					0.00	0.00	0.00	0.00					
	VZV	DNA					0.00	2.14	0.00	0.00					
		RNA					0.00	0.00	0.00	0.00					
	EBV	DNA					0.53	0.00	0.00	0.00					
		RNA					0.00	0.00	0.00	0.00					
	CMV	DNA					0.00	0.00	9.85	0.00					
		RNA					0.00	0.00	0.00	0.21					
	HHV6A	DNA					0.00	0.00	0.00	0.00					
		RNA					0.00	0.00	0.00	0.00					
	HHV6B	DNA					3.39	3.89	0.00	0.41					
		RNA					0.00	0.00	0.00	0.00					
	HHV7	DNA					0.00	0.00	0.00	0.00					
		RNA					0.00	0.00	0.31	0.00					
	HHV8	DNA					0.00	0.00	0.00	0.00					
		RNA					0.00	0.00	0.00	0.00					
	<b>Adenovirus positive controls</b>	HSV1	DNA	0.00	3.35	0.00	0.00	0.00	0.00	0.00	0.00	0.00	0.00	0.00	0.00
			RNA	0.00	11.98	0.00	0.00	0.00	0.00	0.00	0.00	0.00	0.00	0.00	0.00
HSV2		DNA	0.00	10.37	0.00	0.00	0.00	0.00	0.00	0.00	0.00	0.00	0.00	0.00	
		RNA	1.88	22.32	0.00	0.00	0.00	0.00	0.00	0.00	0.00	0.00	0.00	0.00	
VZV		DNA	0.00	2.68	0.00	0.00	0.00	0.00	0.00	0.00	0.00	0.00	0.00	0.00	
		RNA	0.00	4.02	0.00	0.00	0.00	0.00	0.00	0.00	0.00	0.00	0.00	0.00	
EBV		DNA	0.00	157.63	0.00	0.00	0.00	0.00	0.00	1.54	0.00	272.48	0.00	0.00	
		RNA	0.00	9.13	0.00	0.00	0.00	0.00	0.00	0.00	0.00	1.38	17.58	0.00	
CMV		DNA	0.00	3634.02	56.32	123.87	0.00	8.28	0.00	0.00	25.24	0.00	0.00	0.00	
		RNA	0.00	3185.33	0.00	0.00	0.00	0.00	0.00	0.00	0.00	0.00	0.00	0.00	
HHV6A		DNA	0.00	1.67	0.44	0.00	0.00	0.00	0.00	0.00	0.00	0.00	0.00	0.00	
		RNA	0.00	12.38	0.00	0.00	0.00	0.00	0.00	0.00	0.00	0.00	0.00	0.00	
HHV6B		DNA	0.00	5062.23	0.00	0.00	0.00	0.00	0.00	0.00	10503.9	0.00	0.13	0.00	
		RNA	0.00	5819.09	0.00	0.00	0.00	0.00	0.00	0.00	2053.7	0.00	0.00	0.00	
HHV7		DNA	0.00	0.00	0.00	0.00	0.00	0.00	0.00	0.00	0.00	0.00	0.00	0.00	
		RNA	2.00	10.54	0.00	0.00	0.00	0.00	0.00	0.00	0.00	0.00	0.00	0.00	
HHV8		DNA	0.00	2.01	75.91	0.00	0.00	0.00	0.00	0.00	0.00	0.00	0.00	0.00	
		RNA	0.00	1.34	0.00	0.00	0.00	0.00	0.00	0.00	0.00	0.00	0.00	0.00	
<b>Healthy controls</b>		HSV1	DNA	0.00	0.00	0.00	0.00	0.00	0.00	0.00	0.00	0.00	0.00	0.00	0.00
			RNA	0.00	0.00	0.00	0.00	0.00	0.00	0.00	0.00	0.00	0.00	0.00	0.00
	HSV2	DNA	0.00	0.00	0.00	0.00	0.00	0.00	0.00	0.00	0.00	0.00	0.00	0.00	
		RNA	0.00	0.00	0.00	0.00	0.00	0.00	0.00	0.00	0.00	0.00	0.00	0.00	
	VZV	DNA	0.00	0.00	0.00	0.00	0.00	0.00	0.00	0.00	0.00	0.00	0.00	0.00	
		RNA	0.00	0.00	0.00	0.00	0.00	0.00	0.00	0.00	0.00	0.00	0.00	0.00	
	EBV	DNA	0.00	0.00	0.00	0.00	0.00	0.00	0.00	0.10	0.00	0.00	0.00	0.13	
		RNA	1.88	0.00	0.00	0.00	0.00	0.00	0.00	0.10	0.00	0.00	0.00	0.13	
	CMV	DNA	0.00	0.00	0.00	0.00	0.00	0.00	0.00	0.00	0.00	0.00	0.00	0.00	
		RNA	0.00	0.00	0.00	0.00	0.00	0.00	0.00	0.00	0.00	0.00	0.00	0.00	
	HHV6A	DNA	0.00	0.00	0.00	0.08	0.00	0.00	0.10	0.00	0.00	0.00	0.00	5.10	
		RNA	0.00	0.00	0.00	0.00	0.00	0.00	0.00	0.00	0.00	0.00	0.00	0.00	
	HHV6B	DNA	0.00	0.00	0.00	0.00	0.00	0.00	0.00	0.00	0.00	0.00	0.00	0.00	
		RNA	0.00	0.00	0.00	0.00	0.00	0.00	0.00	0.00	0.00	0.00	0.00	0.00	
	HHV7	DNA	0.00	0.00	0.00	0.00	0.00	0.00	0.00	0.00	0.00	0.00	0.00	0.00	
		RNA	0.00	0.00	0.00	0.00	0.00	0.00	0.10	0.00	0.00	0.00	0.00	0.00	
	HHV8	DNA	0.00	0.00	0.00	0.00	0.00	0.00	0.00	0.00	0.00	0.00	0.00	0.00	
		RNA	0.00	0.00	0.00	0.00	0.00	0.00	0.00	0.00	0.00	0.00	0.00	0.00	

597

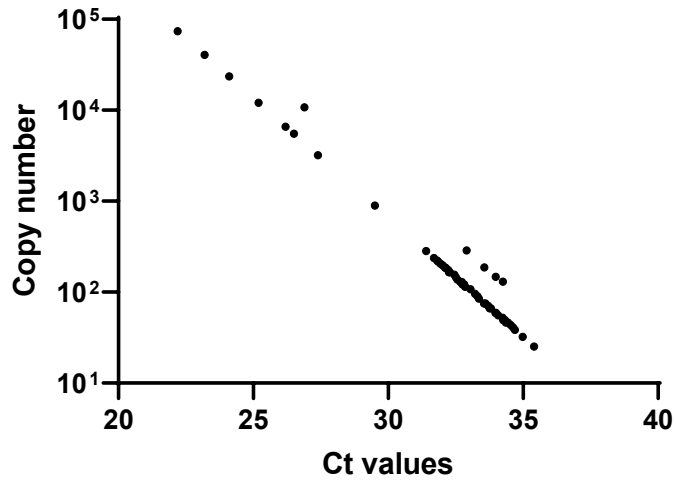
598

## 599 Supplementary Figures



600

601 **Supplementary Figure 1: AAV2, HAdV and human herpesvirus detection by target**  
602 **enrichment sequencing in cases and controls.** Read counts per million are plotted for  
603 HAdV (a), AAV2 (b), HHV6B (c), HSV1 (d), HSV2 (e), VZV (f), HHV6A (g), HHV7 (h),  
604 HHV8 (i) and CMV (j) in cases, healthy controls and HAdV positive children with normal =



605

606 **Supplementary Figure 2: Ct values and estimated copy number for AAV2 real-time**

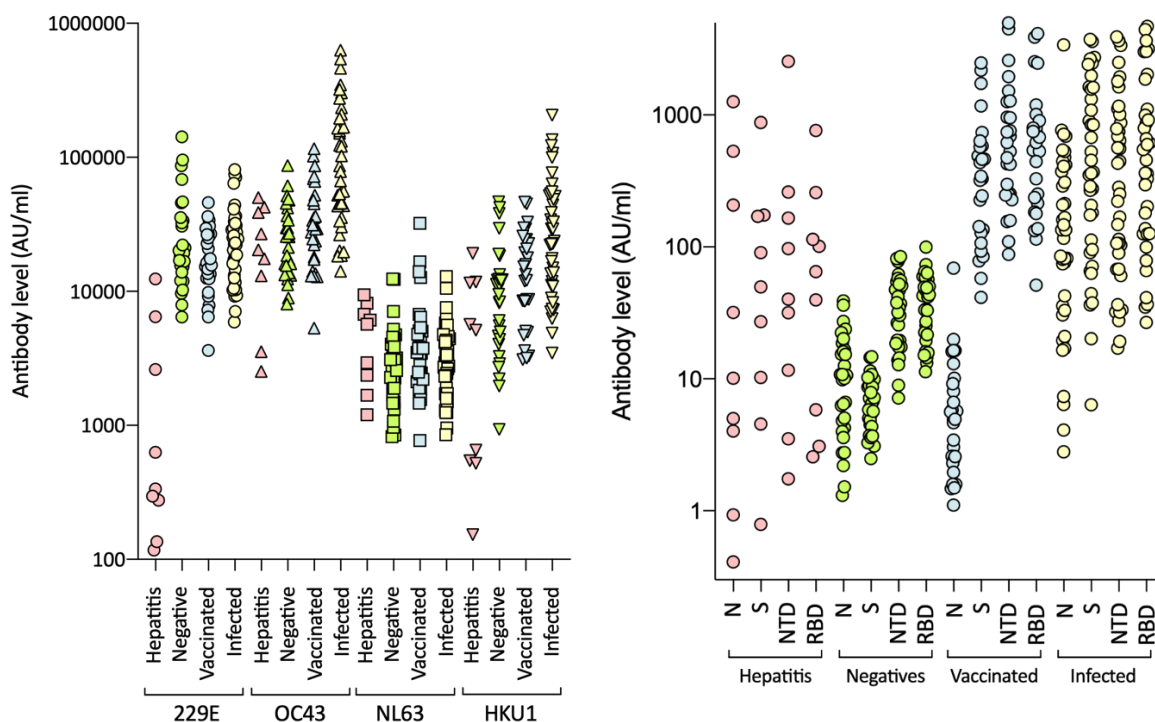
607 PCR. Estimated copy numbers are shown, calculated using serial dilutions of a plasmid

608 containing the 62bp ITR product to generate a standard curve which was then used to

609 calculate the copy number of AAV2 in samples

610

611



612

613 **Supplementary Figure 3. Reactivity to a) human seasonal coronaviruses OC229E,**

614 **OC43, NL63, HKU1 and b) SARS-CoV-2 in sera from paediatric hepatitis cases. Sera**

615 from the paediatric hepatitis cases were screened for reactivity against SARS-CoV-2

616 nucleocapsid (N), spike (S), N-terminal domain of S (NTD) and receptor binding domain of

617 S (RBD) by electrochemiluminescence (MSD-ECL). Reactivity of the nine samples were

618 compared with three groups of sera from adults of known SARS-CoV-2 status; negatives

619 (n=30), vaccinated two doses (n=28) and infected (n=39).

## 620 References

621

- 622 1 Marsh, K. *et al.* Investigation into cases of hepatitis of unknown aetiology among  
623 young children, Scotland, 1 January 2022 to 12 April 2022. *Euro Surveill* **27**,  
624 doi:10.2807/1560-7917.ES.2022.27.15.2200318 (2022).
- 625 2 World Health Organization. *Severe acute hepatitis of unknown aetiology in children -*  
626 *Multi-country*, <[https://www.who.int/emergencies/disease-outbreak-](https://www.who.int/emergencies/disease-outbreak-news/item/2022-DON400)  
627 [news/item/2022-DON400](https://www.who.int/emergencies/disease-outbreak-news/item/2022-DON400)> (2022).
- 628 3 UK Health Security Agency. Investigation into acute hepatitis of unknown aetiology  
629 in children in England - Technical Briefing 4. (UKHSA, 2022).
- 630 4 Gutierrez Sanchez, L. H. *et al.* A Case Series of Children with Acute Hepatitis and  
631 Human Adenovirus Infection. *N Engl J Med*, doi:10.1056/NEJMoa2206294 (2022).
- 632 5 Karpen, S. J. Acute Hepatitis in Children in 2022 - Human Adenovirus 41? *N Engl J*  
633 *Med*, doi:10.1056/NEJMe2208409 (2022).
- 634 6 Kelgeri, C. *et al.* Clinical Spectrum of Children with Acute Hepatitis of Unknown  
635 Cause. *N Engl J Med*, doi:10.1056/NEJMoa2206704 (2022).
- 636 7 Dunning, J. W. *et al.* Open source clinical science for emerging infections. *Lancet*  
637 *Infect Dis* **14**, 8-9, doi:10.1016/S1473-3099(13)70327-X (2014).
- 638 8 Hsu, H. L. *et al.* Structural characterization of a novel human adeno-associated virus  
639 capsid with neurotropic properties. *Nat Commun* **11**, 3279, doi:10.1038/s41467-020-  
640 17047-1 (2020).
- 641 9 Public Health Scotland. *Enhanced Surveillance of Covid-19 in Scotland (Population-*  
642 *based seroprevalence) - 5 week rolling estimate.*,  
643 <[https://publichealthscotland.scot/publications/enhanced-surveillance-of-covid-19-](https://publichealthscotland.scot/publications/enhanced-surveillance-of-covid-19-in-scotland/enhanced-surveillance-of-covid-19-in-scotland-population-based-seroprevalence-surveillance-1-june-2022/dashboard/)  
644 [in-scotland/enhanced-surveillance-of-covid-19-in-scotland-population-based-](https://publichealthscotland.scot/publications/enhanced-surveillance-of-covid-19-in-scotland-population-based-seroprevalence-surveillance-1-june-2022/dashboard/)  
645 [seroprevalence-surveillance-1-june-2022/dashboard/](https://publichealthscotland.scot/publications/enhanced-surveillance-of-covid-19-in-scotland-population-based-seroprevalence-surveillance-1-june-2022/dashboard/)> (2022).
- 646 10 Leen, G., Stein, J. E., Robinson, J., Maldonado Torres, H. & Marsh, S. G. E. The HLA  
647 diversity of the Anthony Nolan register. *HLA* **97**, 15-29, doi:10.1111/tan.14127  
648 (2021).
- 649 11 Srivastava, A., Lusby, E. W. & Berns, K. I. Nucleotide sequence and organization of  
650 the adeno-associated virus 2 genome. *J Virol* **45**, 555-564, doi:10.1128/JVI.45.2.555-  
651 564.1983 (1983).
- 652 12 Atchison, R. W., Casto, B. C. & Hammon, W. M. Adenovirus-Associated Defective  
653 Virus Particles. *Science* **149**, 754-756, doi:10.1126/science.149.3685.754 (1965).
- 654 13 Li, C. *et al.* Neutralizing antibodies against adeno-associated virus examined  
655 prospectively in pediatric patients with hemophilia. *Gene Ther* **19**, 288-294,  
656 doi:10.1038/gt.2011.90 (2012).
- 657 14 Martino, A. T. *et al.* Engineered AAV vector minimizes in vivo targeting of transduced  
658 hepatocytes by capsid-specific CD8+ T cells. *Blood* **121**, 2224-2233,  
659 doi:10.1182/blood-2012-10-460733 (2013).
- 660 15 Manno, C. S. *et al.* Successful transduction of liver in hemophilia by AAV-Factor IX  
661 and limitations imposed by the host immune response. *Nat Med* **12**, 342-347,  
662 doi:10.1038/nm1358 (2006).
- 663 16 Mingozzi, F. *et al.* CD8(+) T-cell responses to adeno-associated virus capsid in  
664 humans. *Nat Med* **13**, 419-422, doi:10.1038/nm1549 (2007).

- 665 17 Rafie, K. *et al.* The structure of enteric human adenovirus 41-A leading cause of  
666 diarrhea in children. *Sci Adv* **7**, doi:10.1126/sciadv.abe0974 (2021).
- 667 18 Echavarría, M. Adenoviruses in immunocompromised hosts. *Clin Microbiol Rev* **21**,  
668 704-715, doi:10.1128/CMR.00052-07 (2008).
- 669 19 Baker, J. M. *et al.* Acute Hepatitis and Adenovirus Infection Among Children -  
670 Alabama, October 2021-February 2022. *MMWR Morb Mortal Wkly Rep* **71**, 638-640,  
671 doi:10.15585/mmwr.mm7118e1 (2022).
- 672 20 Cooper, S. *et al.* Long COVID-19 Liver Manifestation in Children. *J Pediatr*  
673 *Gastroenterol Nutr*, doi:10.1097/MPG.0000000000003521 (2022).
- 674 21 Deep, A., Grammatikopoulos, T., Heaton, N., Verma, A. & Dhawan, A. Outbreak of  
675 hepatitis in children: clinical course of children with acute liver failure admitted to  
676 the intensive care unit. *Intensive Care Med*, doi:10.1007/s00134-022-06765-3 (2022).
- 677 22 Zerr, D. M. *et al.* A population-based study of primary human herpesvirus 6 infection.  
678 *N Engl J Med* **352**, 768-776, doi:10.1056/NEJMoa042207 (2005).
- 679 23 van Gerven, N. M. *et al.* HLA-DRB1\*03:01 and HLA-DRB1\*04:01 modify the  
680 presentation and outcome in autoimmune hepatitis type-1. *Genes Immun* **16**, 247-  
681 252, doi:10.1038/gene.2014.82 (2015).
- 682 24 Lanchbury, J. S. *et al.* Strong primary selection for the Dw4 subtype of DR4 accounts  
683 for the HLA-DQw7 association with Felty's syndrome. *Hum Immunol* **32**, 56-64,  
684 doi:10.1016/0198-8859(91)90117-r (1991).
- 685 25 La Bella, T. *et al.* Adeno-associated virus in the liver: natural history and  
686 consequences in tumour development. *Gut* **69**, 737-747, doi:10.1136/gutjnl-2019-  
687 318281 (2020).
- 688 26 Cordey, S. *et al.* Blood virosphere in febrile Tanzanian children. *Emerg Microbes*  
689 *Infect* **10**, 982-993, doi:10.1080/22221751.2021.1925161 (2021).
- 690 27 Aurnhammer, C. *et al.* Universal real-time PCR for the detection and quantification of  
691 adeno-associated virus serotype 2-derived inverted terminal repeat sequences. *Hum*  
692 *Gene Ther Methods* **23**, 18-28, doi:10.1089/hgtb.2011.034 (2012).
- 693 28 Gautheret-Dejean, A. *et al.* Development of a real-time polymerase chain reaction  
694 assay for the diagnosis of human herpesvirus-6 infection and application to bone  
695 marrow transplant patients. *J Virol Methods* **100**, 27-35, doi:10.1016/s0166-  
696 0934(01)00390-1 (2002).
- 697 29 van Maarseveen, N. M., Wessels, E., de Brouwer, C. S., Vossen, A. C. & Claas, E. C.  
698 Diagnosis of viral gastroenteritis by simultaneous detection of Adenovirus group F,  
699 Astrovirus, Rotavirus group A, Norovirus genogroups I and II, and Sapovirus in two  
700 internally controlled multiplex real-time PCR assays. *J Clin Virol* **49**, 205-210,  
701 doi:10.1016/j.jcv.2010.07.019 (2010).
- 702 30 Pappas, D. J., Marin, W., Hollenbach, J. A. & Mack, S. J. Bridging ImmunoGenomic  
703 Data Analysis Workflow Gaps (BIGDAWG): An integrated case-control analysis  
704 pipeline. *Hum Immunol* **77**, 283-287, doi:10.1016/j.humimm.2015.12.006 (2016).
- 705
-



---

## CONSORTIA

### **ISARIC Comprehensive Clinical Characterisation Collaboration (ISARIC4C)**

J Kenneth Baillie, Malcolm G Semple, Gail Carson, Peter JM Openshaw, Jake Dunning, Laura Merson, Clark D Russell, Maria Zambon, Meera Chand, Richard S Tedder, Saye Khoo, Lance CW Turtle, Tom Solomon, Samreen Ijaz, Tom Fletcher, Massimo Palmarini, Antonia Ho, Emma C Thomson, Nicholas Price, Thushan de Silva, Chloe Donohue, Hayley Hardwick, Wilna Oosthuyzen, Miranda Odam, Primrose Chikowore, Sara Clohisey, Andrew Law, Lucy Norris, Sarah Tait, Murray Wham, Richard Clark, Audrey Coutts, Lorna Donnelly, Angie Fawkes, Tammy Gilchrist, Katarzyna Hafezi, Louise MacGillivray, Alan Maclean, Sarah McCafferty, Kirstie Morrice, Lee Murphy, Nicola Wrobel, Sarah E McDonald, Victoria Shaw, Katie A. Ahmed, Jane A Armstrong, Lauren Lett, Paul Henderson, Louisa Pollock, Shyla Kishore, Helen Brotherton, Lawrence Armstrong, Andrew Mitra, Anna Dall, Kristyna Bohmova, Sheena Logan, Louise Gannon, Ken Agwuh, Srikanth Chukkambotla, Ingrid DuRand, Duncan Fullerton, Sanjeev Garg, Clive Graham, Tassos Grammatikopoulos, Stuart Hartshorn, Luke Hodgson, Paul Jennings, George Koshy, Tamas Leiner, James Limb, Jeff Little, Sheena Logan, Elijah Matovu, Fiona McGill, Craig Morris, John Morrice, David Price, Henrik Reschreiter, Tim Reynolds, Paul Whittaker, Thomas Jordan, Rachel Tayler, Clare Irving, Katherine Jack, Maxine Ramsay, Margaret Millar, Barry Milligan, Naomi Hickey, Maggie Connon, Catriona Ward, Laura Beveridge, Susan MacFarlane, Karen Leitch, Claire Bell, Lauren Finlayson, Joy Dawson, Janie Candlish, Laura McGenily, Tara Roome, Cynthia Diaba, Jasmine Player, Natassia Powell, Ruth Howman, Sara Burling, Sharon Floyd, Sarah Farmer, Susie Ferguson, Susan Hope, Lucy Rubick, Rachel Swingler, Emma Collins, Collette Spencer, Amaryl Jones, Barbara Wilson, Diane Armstrong, Mark Birt, Holly Dickinson, Rosemary Harper, Darran Martin, Amy Roff, Sarah Mills.

### **DIAMONDS Consortium**

PARTNER: Imperial College (Coordinating Centre) (UK)

Chief investigator/DIAMONDS coordinator:

Michael Levin<sup>1</sup>

Principal and co-investigators (alphabetical order)<sup>1</sup>

Aubrey Cunnington; Jethro Herberg; Myrsini Kaforou; Victoria Wright

Section of Paediatric Infectious Diseases Research Group (alphabetical order)<sup>1</sup>

Evangelos Bellos; Claire Broderick; Samuel Channon-Wells; Samantha Cooray; Tisham De (database work package lead); Giselle D'Souza; Leire Estramiana Elorrieta; Diego Estrada-Rivadeneira; Rachel Galassini (Clinical Trial Manager); Dominic Habgood-Coote; Shea Hamilton (Proteomics); Heather Jackson; James Kavanagh; Mahdi Moradi Marjaneh; Stephanie Menikou; Samuel Nichols; Ruud Nijman; Harsita Patel; Ivana Pennisi; Oliver Powell; Ruth Reid; Priyen Shah; Ortensia Vito; Elizabeth Whittaker; Clare Wilson; Rebecca Womersley

Recruitment team at Imperial College Healthcare NHS Trust, London (alphabetical order)<sup>2</sup>

Amina Abdulla; Sarah Darnell; Sobia Mustafa

Engineering Team

Pantelis Georgiou<sup>3</sup> (engineering lead); Jesus-Rodriguez Manzano<sup>4</sup>; Nicolas Moser<sup>3</sup>; Ivana Pennisi<sup>1</sup>

<sup>1</sup>Section of Paediatric Infectious Disease, Imperial College London, Norfolk Place, London W2 1PG, UK

<sup>2</sup>Children's Clinical Research Unit, St Mary's Hospital, Praed Street, London W2 1NY, UK

<sup>3</sup>Imperial College London, Department of Electrical and Electronic Engineering, South Kensington Campus, London, SW7 2AZ, UK

<sup>4</sup>Imperial College London, Department of Infectious Disease, Section of Adult Infectious Disease, Hammersmith Campus, London, W12 0NN, UK

UK Non-Consortium Clinical Recruiting Sites

Evelina London Children's Hospital, Guy's and St Thomas' NHS Foundation Trust; King's College London [combined]

Michael Carter<sup>1,2</sup> (principal investigator); Shane Tibby<sup>1,2</sup> (co-investigator)

Recruitment team (alphabetical order): Jonathan Cohen<sup>1</sup>; Francesca Davis<sup>1</sup>; Julia Kenny<sup>1</sup>; Paul Wellman<sup>1</sup>; Marie White<sup>1</sup>

---

Laboratory team (alphabetical order): Matthew Fish<sup>3</sup>; Aislinn Jennings<sup>4</sup>; Manu Shankar-Hari<sup>3,4</sup>

1 Evelina London Children's Hospital, Guy's and St Thomas' NHS Foundation Trust, London, UK

2 Department of Women and Children's Health, School of Life Course Sciences, King's College London, UK

3 Department of Infectious Diseases, School of Immunology and Microbial Sciences, King's College London, London, UK

4 Department of Intensive Care Medicine, Guy's and St Thomas' NHS Foundation Trust, London, UK

University Hospitals Sussex

Katy Fidler<sup>1</sup> (principal investigator); Dan Agranoff<sup>2</sup> (co-investigator)

Recruitment team; Vivien Richmond<sup>1,3</sup>, Mathew Seal<sup>2</sup>

1 Royal Alexandra Children's Hospital, University Hospitals Sussex, Brighton, UK

2 Dept of Infectious Diseases, University Hospitals Sussex, Brighton, UK

3 Research Nurse team, University Hospitals Sussex, Brighton, UK

University Hospital Southampton NHS Foundation Trust

Saul Faust<sup>1</sup> (principal investigator); Dan Owen<sup>1</sup> (co-investigator);

Recruitment team; Ruth Ensom<sup>2</sup>; Sarah McKay<sup>2</sup>; Diana Mondo<sup>3</sup>, Mariya Shaji<sup>3</sup>; Rachel Schranz<sup>3</sup> (alphabetical order)

1 NIHR Southampton Clinical Research Facility, University Hospital Southampton NHS Foundation Trust and University of Southampton, UK

2 NIHR Southampton Clinical Research Facility, University Hospital Southampton NHS Foundation Trust, UK

---

3 Department of R&D, University Hospital Southampton NHS Foundation Trust, UK

Barts Health NHS Trust

Prita Rughnani<sup>1, 2, 3</sup> (principal investigator 2020-2021); Amutha Anpananthar<sup>1, 2, 3</sup> (principal investigator 2021-to date); Susan Liebeschuetz<sup>2</sup> (co-investigator), Anna Riddell<sup>1</sup> (co-investigator)

Recruitment team; Nosheen Khalid<sup>1, 3</sup>, Ivone Lancoma Malcolm, Teresa Simagan<sup>3</sup> (alphabetical order)

1 Royal London Hospital, Whitechapel Rd, London E1 1FR, UK

2 Newham University Hospital, Glen Rd, London E13 8SL, UK

3 Whipps Cross University Hospital, Whipps Cross Road, London, E11 1NR, UK

Great Ormond Street Hospital for Children NHS Foundation Trust

Mark Peters<sup>1,2</sup> (principal investigator); Alasdair Bamford<sup>1,2</sup> (co-investigator)

Recruitment team; Lauran O'Neill<sup>1</sup>

1 Great Ormond Street Hospital, London, WC1N 3JH, UK

2 UCL Great Ormond St Institute of Child Health, WC1N 1EH, UK

Cambridge University Hospitals NHS Foundation Trust

Nazima Pathan<sup>1,2</sup> (principal investigator)

Recruitment team; Esther Daubney<sup>1</sup>, Deborah White<sup>1</sup> (alphabetical order)

1 Addenbrooke's Hospital, Hills Road, Cambridge CB2 0QQ, UK

2 Department of Paediatrics, University of Cambridge, Cambridge CB2 0QQ, UK

University College London Hospitals NHS Foundation Trust

Melissa Heightman<sup>1</sup> (principal investigator); Sarah Eisen<sup>1</sup> (co-investigator)

---

Recruitment team; Terry Segal<sup>1</sup>, Lucy Wellings<sup>1</sup> (alphabetical order)

<sup>1</sup> University College London Hospital, Euston Road, London NW1 2BU, UK

St George's University Hospitals NHS Foundation Trust

Simon B Drysdale<sup>1</sup> (principal investigator)

Recruitment team; Nicole Branch<sup>1</sup>, Lisa Hamzah<sup>1</sup>, Heather Jarman<sup>1</sup> (alphabetical order)

<sup>1</sup> St George's Hospital, Blackshaw Road, London SW17 0QT, UK

Lewisham and Greenwich NHS Trust

Maggie Nyirenda<sup>1, 2</sup> (principal investigator)

Recruitment team Lisa Capozzi<sup>1</sup>, Emma Gardiner<sup>1</sup> (alphabetical order)

<sup>1</sup> University Hospital Lewisham, London SE13 6LH, UK

<sup>2</sup> Queen Elizabeth Hospital Greenwich, London SE18 4QH, UK

Liverpool University Hospitals NHS Foundation Trust

Robert Moots<sup>1</sup> (principal investigator); Magda Nasher<sup>2</sup> (principal investigator)

Recruitment team; Anita Hanson<sup>2</sup>; Michelle Linforth<sup>1</sup>

<sup>1</sup> Aintree University Hospital, Lower Lane, Liverpool L9 7AL, UK

<sup>2</sup> Royal Liverpool Hospital, Prescot St, Liverpool L7 8XP, UK

Leeds Teaching Hospitals NHS Trust

Sean O'Riordan<sup>1</sup> (principal investigator)

Recruitment team; Donna Ellis<sup>1</sup>

<sup>1</sup> Leeds Children's Hospital, Leeds LS1 3EX, UK

---

King's College Hospital NHS Foundation Trust

Akash Deep<sup>1</sup> (principal investigator)

Recruitment team; Ivan Caro<sup>1</sup>

<sup>1</sup> Kings College Hospital, Denmark Hill, London SE5 9RS, UK

Sheffield Children's NHS Foundation Trust

Fiona Shackley <sup>1</sup> (principal investigator);

Recruitment team; Arianna Bellini,<sup>1</sup> Stuart Gormley<sup>1</sup> (alphabetical order)

<sup>1</sup>Sheffield Children's Hospital, Broomhall, Sheffield S10 2TH, UK

University Hospitals of Leicester NHS Foundation Trust

Samira Neshat<sup>1</sup> (principal investigator)

<sup>1</sup>Leicester General Hospital, Leicester LE1 5WW, UK

Birmingham Women's and Children's Hospital NHS Foundation Trust

Barnaby J Scholefield<sup>1</sup> (principal investigator)

Recruitment team; Ceri Robbins<sup>1</sup>, Helen Winmill<sup>1</sup> (alphabetical order)

<sup>1</sup> Birmingham Children's Hospital, Steelhouse Lane, Birmingham B4 6NH, UK

PARTNER: University of Oxford (UK)

Children's Hospital, John Radcliffe Hospital, Oxford

Principal Investigator

Stéphane C. Paulus<sup>1,2,3</sup>

Co-Principal Investigator

---

Andrew J. Pollard<sup>1,2,3,4</sup>

Co-investigators

Mark Anthony<sup>1</sup> (neonates)

Recruitment team

Sarah Hopton<sup>1</sup>, Danielle Miller<sup>1</sup>, Zoe Oliver<sup>1</sup>, Sally Beer<sup>1</sup>, Bryony Ward<sup>1</sup>

<sup>1</sup>John Radcliffe Hospital, Oxford University Hospitals NHS Foundation Trust, Oxford, UK

<sup>2</sup>Department of Paediatrics, University of Oxford, UK

<sup>3</sup>Oxford Vaccine Group, University of Oxford, UK

<sup>4</sup>NIHR Oxford Biomedical Research Centre, Oxford, UK

University of Oxford, Nepal Site

Principal Investigator

Shrijana Shrestha<sup>1</sup>

Co-Principal Investigator

Andrew J Pollard<sup>2,3</sup>

Nepal Research Team

Meeru Gurung<sup>1</sup>

Puja Amatya<sup>1</sup>

Bhishma Pokhrel<sup>1</sup>

---

Sanjeev Man Bijukchhe<sup>1</sup>

Oxford Research Team

Tim Lubinda<sup>2</sup>

Sarah Kelly<sup>2</sup>

Peter O'Reilly<sup>2</sup>

<sup>1</sup>Paediatric Research Unit, Patan Academy of Health Sciences, Kathmandu, Nepal.

<sup>2</sup>Oxford Vaccine Group, Department of Paediatrics, University of Oxford, Oxford, United Kingdom.

<sup>3</sup>NIHR Oxford Biomedical Research Centre, Oxford, United Kingdom.

PARTNER: SERGAS (Spain)

Principal Investigators

Federico Martín-Torres<sup>1</sup>

Antonio Salas<sup>1,2</sup>

GENVIP RESEARCH GROUP (in alphabetical order):

Fernando Álvarez González<sup>1</sup>, Xabier Bello<sup>1,2</sup>, Miriam Ben García<sup>1</sup>, Sandra Carnota<sup>1</sup>, Miriam Cebey-López<sup>1</sup>, María José Curras-Tuala<sup>1,2</sup>, Carlos Durán Suárez<sup>1</sup>, Luisa García Vicente<sup>1</sup>, Alberto Gómez-Carballa<sup>1,2</sup>, Jose Gómez Rial<sup>1</sup>, Pilar Leboráns Iglesias<sup>1</sup>, Federico Martín-Torres<sup>1</sup>, Nazareth Martín-Torres<sup>1</sup>, José María Martín Sánchez<sup>1</sup>, Belén Mosquera Pérez<sup>1</sup>, Jacobo Pardo-Seco<sup>1,2</sup>, Lidia Piñeiro Rodríguez<sup>1</sup>, Sara Pischedda<sup>1,2</sup>, Sara Rey Vázquez<sup>1</sup>, Irene Rivero Calle<sup>1</sup>, Carmen Rodríguez-Tenreiro<sup>1</sup>, Lorenzo Redondo-Collazo<sup>1</sup>, Miguel Sadiki Ora<sup>1</sup>, Antonio Salas<sup>1,2</sup>, Sonia Serén Fernández<sup>1</sup>, Cristina Serén Trasorras<sup>1</sup>, Marisol Vilas Iglesias<sup>1</sup>.

<sup>1</sup> Translational Pediatrics and Infectious Diseases, Pediatrics Department, Hospital Clínico Universitario de Santiago, Santiago de Compostela, Spain, and GENVIP Research Group



---

([www.genvip.org](http://www.genvip.org)), Instituto de Investigación Sanitaria de Santiago, Universidad de Santiago de Compostela, Galicia, Spain.

2 Unidade de Xenética, Departamento de Anatomía Patolóxica e Ciencias Forenses, Instituto de Ciencias Forenses, Facultade de Medicina, Universidade de Santiago de Compostela, and GenPop Research Group, Instituto de Investigaciones Sanitarias (IDIS), Hospital Clínico Universitario de Santiago, Galicia, Spain

3 Fundación Pública Galega de Medicina Xenómica, Servizo Galego de Saúde (SERGAS), Instituto de Investigaciones Sanitarias (IDIS), and Grupo de Medicina Xenómica, Centro de Investigación Biomédica en Red de Enfermedades Raras (CIBERER), Universidade de Santiago de Compostela (USC), Santiago de Compostela, Spain

PARTNER: Liverpool (UK)

Principal Investigators

Enitan D Carrol<sup>1,2</sup>,

Research Group (in alphabetical order):

Elizabeth Cocklin<sup>1</sup>, Aakash Khanijau<sup>1</sup>, Rebecca Lenihan<sup>1</sup>, Nadia Lewis-Burke<sup>1</sup>

Karen Newall<sup>4</sup>, Sam Romaine<sup>1</sup>, <sup>1</sup> Department of Clinical Infection, Microbiology and Immunology, University of Liverpool Institute of Infection, Veterinary and Ecological Sciences , Liverpool, England

<sup>2</sup> Alder Hey Children's Hospital, Department of Infectious Diseases, Eaton Road, Liverpool, L12 2AP

<sup>3</sup> <sup>4</sup> Alder Hey Children's Hospital, Clinical Research Business Unit, Eaton Road, Liverpool, L12 2AP

PARTNER: NATIONAL AND KAPODISTRIAN UNIVERSITY OF ATHENS (Greece)

Principal Investigator: Maria Tsolia<sup>1</sup>

Co-Investigator: Irini Eleftheriou<sup>1</sup>

---

PID Unit: Nikos Spyridis<sup>1</sup>, Maria Tambouratzi<sup>1</sup>

Pediatric Rheumatology Unit: Despoina Maritsi<sup>1</sup>

Lab: Antonios Marmarinos<sup>1</sup>, Marietta Xagorari<sup>1</sup>

Recruitment teams:

Adult COVID19- Infectious Diseases: Lourida Panagiota, Pefanis Aggelos<sup>2</sup>

Adult COVID19: Akinosoglou Karolina, Gogos Charalambos, Maragos Markos<sup>3</sup>

Adult Inflammatory Diseases-Oncology: Voulgarelis Michalis , Stergiou Ioanna<sup>4</sup>

12nd Department of Pediatrics, National and Kapodistrian University of Athens (NKUA), Children's Hospital "P, and A. Kyriakou", Athens, Greece

21st Department of Infectious Diseases, General Hospital "Sotiria"

3Pathology Department, University of Patras, General Hospital "Panagia i Voithia"

4Pathophysiology Department, Medical Faculty, National and Kapodistrian University of Athens (NKUA), General Hospital "Laiko"

Newcastle upon Tyne Hospitals NHS Foundation Trust and Newcastle University (UK) combined

Principal Investigator:

Marieke Emonts <sup>1,2,3</sup> (all activities)

Co-investigators

Emma Lim<sup>2,3,6</sup> (all activities)

John Isaacs<sup>1</sup> (adult inflammatory)

Recruitment team (alphabetical), datamanagers, and GNCH Research unit:

---

Kathryn Bell<sup>4</sup>, Stephen Crulley<sup>4</sup>, Daniel Fabian<sup>4</sup>, Evelyn Thomson<sup>4</sup>, Diane Wallia<sup>4</sup>, Caroline Miller<sup>4</sup> , Ashley Bell<sup>4</sup>

PhD Students/medical staff DIAMONDS

Fabian J.S. van der Velden<sup>1,2</sup> (all activities), Geoff Shenton<sup>7</sup> (oncology), Ashley Price<sup>8,9</sup> (Adult COVID)

Students

Owen Treloar <sup>1,2</sup> (quality control, data management and analysis)

Daisy Thomas<sup>1,2</sup> (recruitment)

Author Affiliations:

1 Translational and Clinical Research Institute, Newcastle University, Newcastle upon Tyne UK

2 Great North Children's Hospital, Paediatric Immunology, Infectious Diseases & Allergy, Newcastle upon Tyne Hospitals NHS Foundation Trust, Newcastle upon Tyne, United Kingdom.

3 NIHR Newcastle Biomedical Research Centre based at Newcastle upon Tyne Hospitals NHS Trust and Newcastle University, Westgate Rd, Newcastle upon Tyne NE4 5PL, United Kingdom

4 Great North Children's Hospital, Research Unit, Newcastle upon Tyne Hospitals NHS Foundation Trust, Newcastle upon Tyne, United Kingdom.

6 Population Health Sciences Institute, Newcastle University, Newcastle upon Tyne, UK

7 Great North Children's Hospital, Paediatric Oncology, Newcastle upon Tyne Hospitals NHS Foundation Trust, Newcastle upon Tyne, United Kingdom.

8 Department of Infection & Tropical Medicine, Newcastle upon Tyne Hospitals NHS Foundation Trust, Newcastle upon Tyne, United Kingdom

9 NIHR Newcastle In Vitro Diagnostics Co-operative (Newcastle MIC), Newcastle upon Tyne, United Kingdom.

Servicio Madrileño de Salud (SERMAS) - Fundación Biomédica del Hospital Universitario 12 de Octubre (FIB-H12O) (Spain)

Principal Investigators

---

Pablo Rojo<sup>1,3</sup>

Cristina Epalza<sup>1,2</sup>

SERMAS/FIB-H120 team:

Serena Villaverde<sup>1</sup>, Sonia Márquez<sup>2</sup>, Manuel Gijón<sup>2</sup>, Fátima Machín<sup>2</sup>, Laura Cabello<sup>2</sup>, Irene Hernández<sup>2</sup>, Lourdes Gutiérrez<sup>2</sup>, Ángela Manzanares<sup>1</sup>

Author Affiliations:

1 Servicio Madrileño de Salud (SERMAS), Pediatric Infectious Diseases Unit, Department of Pediatrics, Hospital Universitario 12 de Octubre, Madrid, Spain

2 Fundación Biomédica del Hospital Universitario 12 de Octubre (FIB-H120), Unidad Pediátrica de Investigación y Ensayos Clínicos (UPIC), Hospital Universitario 12 de Octubre, Instituto de Investigación Sanitaria Hospital 12 de Octubre (i+12), Madrid, Spain.

3 Universidad Complutense de Madrid, Faculty of Medicine, Department of Pediatrics, Madrid, Spain.

Amsterdam University Medical Center (Amsterdam UMC), University of Amsterdam

Principal Investigator:

T.W. (Taco) Kuijpers MD PhD<sup>1,2</sup> (all activities)

Co-investigators

M. (Martijn) van de Kuip MD PhD<sup>1</sup> (infectious disease)

A.M. (Marceline) van Furth MD PhD<sup>1</sup> (infectious disease)

J.M. (Merlijn) van den Berg MD PhD<sup>1</sup> (inflammatory disease)

Hospital Team (all activities):

---

Giske Biesbroek MD PhD 1, Floris Verkuil MD (PhD student) 1, Carlijn (C.W.) van der Zee MD (start 1/8/2022, PhD student) 1

Recruitment:

Dasja Pajkrt MD PhD 1, Michael Boele van Hensbroek MD PhD 1, Dieneke Schonenberg MD 1, Mariken Gruppen MD 1, Sietse Nagelkerke MD PhD 1,2, medical students

Laboratory Team:

Machiel H Jansen 1, Ines Goetschalckx (PhD student) 2

Author Affiliations:

1 Amsterdam UMC, Emma Children's Hospital, Dept of Pediatric Immunology, Rheumatology and Infectious Disease, University of Amsterdam, The Netherlands

2 Sanquin, Dept of Molecular Hematology, University Medical Center, Amsterdam, The Netherlands

Bambino Gesù Children's Hospital (Rome-Italy)

Principal Investigator

Lorenza Romani 1

Maia De Luca 1

Recruitment Team

Sara Chiurchiù 1

Martina Di Giuseppe 1

Affiliation

1 Infectious Disease Unit, Academic Department of Pediatrics, Bambino Gesù Children's Hospital, IRCCS, Rome 00165, Italy

ERASMUS MC-Sophia Children's Hospital

Principal Investigator

Clementien L. Vermont<sup>2</sup>

Research group

Henriëtte A. Moll<sup>1</sup>, Dorine M. Borensztajn<sup>1</sup>, Nienke N. Hagedoorn, Chantal Tan <sup>1</sup>, Joany Zachariasse <sup>1</sup>,  
Medical students <sup>1</sup>

Additional investigator

W Dik <sup>3</sup>

<sup>1</sup> Erasmus MC-Sophia Children's Hospital, Department of General Paediatrics, Rotterdam, the Netherlands

<sup>2</sup> Erasmus MC-Sophia Children's Hospital, Department of Paediatric Infectious Diseases & Immunology, Rotterdam, the Netherlands

<sup>3</sup> Erasmus MC, Department of immunology, Rotterdam, the Netherlands

TAIWAN

Ching-Fen (Kitty), Shen

Division of Infectious Disease, Department of Pediatrics, National Cheng Kung University

Tainan, Taiwan

Riga Stradins University (Riga, Latvia)

Principal Investigator:

---

Dace Zavadska 1,2 (all activities)

Co-investigators

Sniedze Laivacuma 1,3 (adult cohorts)

Recruitment team:

Aleksandra Rudzate 1,2, Diana Stoldere 1,2, Arta Barzdina 1,2, Elza Barzdina 1,2, Sniedze Laivacuma1,3, Monta Madelane 1,3

Laboratory

Dagne Gravele 2, Dace Svile2

Author Affiliations:

1 Riga Stradins University, Riga, Latvia

2 Children clinical university hospital, Riga, Latvia

3 Riga East clinical university hospital, Riga, Latvia

Assistance Publique - Hôpitaux de Paris

Principal Investigator:

Romain Basmaci 1,2

Co-investigator:

Noémie Lachaume 1

Recruitment team:

---

Pauline Bories 1, Raja Ben Tkhayat 1, Laura Chériaux 1, Juraté Davoust 1, Kim-Thanh Ong 1, Marie Cotillon 1, Thibault de Groc 1, Sébastien Le 1, Nathalie Vergnault 1, Hélène Sée 1, Laure Cohen 1, Alice de Tugny 1, Nevena Danekova 1

Author Affiliations:

1 Service de Pédiatrie-Urgences, AP-HP, Hôpital Louis-Mourier, F-92700 Colombes, France

<sup>2</sup> Université Paris Cité, Inserm, IAME, F-75018 Paris, France

BioMérieux

Principal Investigator:

Marine Mommert-Tripon

Co-investigator:

Karen Brengel-Pesce

Author Affiliations:

bioMérieux - Open Innovation & Partnerships Department, Lyon, France

University Medical Centre Ljubljana, Slovenia

Principal Investigator: Marko Pokorn 1,2,3

Co-Investigator: Mojca Kolnik<sup>2</sup>

Research Group (in alphabetical order):

Tadej Avčin<sup>2,3</sup>, Tanja Avramoska<sup>2</sup>, Natalija Bahovec<sup>1</sup>, Petra Bogovič<sup>1</sup>, Lidija Kitanovski<sup>2,3</sup>, Mirijam Nahtigal<sup>1</sup>, Lea Papst<sup>1</sup>, Tina Plankar Srovin<sup>1</sup>, Franc Strle<sup>1,2</sup>, Anja Srpčič<sup>2</sup>, Katarina Vincek<sup>1</sup>.

Affiliations:

1. Department of Infectious diseases, University Medical Centre Ljubljana, Slovenia



- 
2. University Children's Hospital, University Medical Centre Ljubljana, Slovenia
  3. Faculty of Medicine, University of Ljubljana, Slovenia
  4. Centre for Clinical research, University Medical Centre Ljubljana

University Medical Center Utrecht, Utrecht, The Netherlands

Principal Investigator

Michiel van der Flier<sup>1,5</sup> (Pediatric Infectious Diseases and Immunology)

Co-investigators

Wim J.E. Tissing<sup>5</sup> (Pediatric Oncology)

Roelie M. Wösten-van Asperen<sup>2</sup> (Pediatric Intensive Care Unit)

Sebastiaan J Vastert<sup>3</sup> (Pediatric Rheumatology)

Daniel C Vijlbrief<sup>4</sup> (Pediatric Neonatal Intensive Care)

Louis J. Bont<sup>1,5</sup> (Pediatric Infectious Diseases and Immunology)

Tom F.W. Wolfs <sup>1,5</sup> (Pediatric Infectious Diseases and Immunology)

PhD student

Coco R. Beudeker<sup>1,5</sup> (Pediatric Infectious Diseases and Immunology)

Affiliations:

1. Pediatric Infectious Diseases and Immunology, 2. Pediatric Intensive Care Unit 3. Pediatric Rheumatology 4. Pediatric Neonatal Intensive Care, Wilhelmina Children's Hospital, University Medical Center Utrecht, Utrecht, The Netherlands

5. Princess Maxima Center for Pediatric Oncology, Utrecht, The Netherlands

PARTNER: University of Bern, Inselspital, Bern University Hospital, University of Bern (Switzerland)

#### Principal Investigators (alphabetical)

Philipp Agyeman<sup>1</sup>

Luregn Schlapbach<sup>2,3</sup>

#### Co-Investigator

Christoph Aebi<sup>1</sup>

#### Recruitment team

Mariama Usman<sup>1</sup>, Stefanie Schlüchter<sup>1</sup>, Verena Wyss<sup>1</sup>, Nina Schöbi<sup>1</sup>, Elisa Zimmermann<sup>2</sup> PhD,  
Marion Meier<sup>2</sup>, Kathrin Weber<sup>2</sup>

<sup>1</sup> Department of Pediatrics, Inselspital, Bern University Hospital, University of Bern, Switzerland

<sup>2</sup> Department of Intensive Care and Neonatology, and Children`s Research Center, University  
Children`s Hospital Zurich, Zurich, Switzerland

<sup>3</sup> Child Health Research Centre, The University of Queensland, Brisbane, Australia

#### Swiss Pediatric Sepsis Study group

Philipp Agyeman, MD <sup>1</sup>, Luregn J Schlapbach, MD, FCICM <sup>2,3</sup>, Eric Giannoni, MD <sup>4,5</sup>, Martin Stocker,  
MD <sup>6</sup>, Klara M Posfay-Barbe, MD <sup>7</sup>, Ulrich Heininger, MD <sup>8</sup>, Sara Bernhard-Stirнемann, MD <sup>9</sup>, Anita  
Niederer-Loher, MD <sup>10</sup>, Christian Kahlert, MD <sup>10</sup>, Giancarlo Natalucci, MD <sup>11</sup>, Christa Relly, MD <sup>12</sup>,  
Thomas Riedel, MD <sup>13</sup>, Christoph Aebi, MD <sup>1</sup>, Christoph Berger, MD <sup>12</sup>

#### Affiliations:

<sup>1</sup> Department of Pediatrics, Inselspital, Bern University Hospital, University of Bern, Switzerland

---

2 Department of Intensive Care and Neonatology, and Children`s Research Center, University Children`s Hospital Zurich, Zurich, Switzerland

3 Child Health Research Centre, The University of Queensland, Brisbane, Australia

4 Clinic of Neonatology, Department Mother-Woman-Child, Lausanne University Hospital and University of Lausanne, Switzerland

5 Infectious Diseases Service, Department of Medicine, Lausanne University Hospital and University of Lausanne, Switzerland

6 Department of Pediatrics, Children`s Hospital Lucerne, Lucerne, Switzerland

7 Pediatric Infectious Diseases Unit, Children`s Hospital of Geneva, University Hospitals of Geneva, Geneva, Switzerland

8 Infectious Diseases and Vaccinology, University of Basel Children`s Hospital, Basel, Switzerland

9 Children`s Hospital Aarau, Aarau, Switzerland

10 Division of Infectious Diseases and Hospital Epidemiology, Children`s Hospital of Eastern Switzerland St. Gallen, St. Gallen, Switzerland

11 Department of Neonatology, University Hospital Zurich, Zurich, Switzerland

12 Division of Infectious Diseases and Hospital Epidemiology, and Children`s Research Center, University Children`s Hospital Zurich, Switzerland

13 Children`s Hospital Chur, Chur, Switzerland

Micropathology Ltd (UK)

Micropathology Ltd, The Venture Center, University of Warwick Science Park, Sir William Lyons Road, Coventry, CV4 7EZ

Principle Investigator; Prof Colin Fink

Co Investigators: Marie Voice, Leo Calvo-Bado, Michael Steele, Jennifer Holden

Research group: Benjamin Evans, Jake Stevens, Peter Matthews, Kyle Billing

Medical University of Graz, Austria (MUG)

---

Principal Investigator:

Werner Zenz<sup>1</sup> (all activities)

Co-investigators (in alphabetical order):

Alexander Binder<sup>1</sup> (grant application)

Benno Kohlmaier<sup>1</sup> (study design, recruitment)

Daniela S. Kohlfürst<sup>1</sup> (study design)

Nina A. Schweintzger<sup>1</sup> (all activities)

Christoph Zurl<sup>1</sup> (study design, recruitment)

Recruitment team, data managers, laboratory work (in alphabetical order):

Susanne Hösele<sup>1</sup>, Manuel Leitner<sup>1</sup>, Lena Pölz<sup>1</sup>, Alexandra Rusu<sup>1</sup>, Glorija Rajic<sup>1</sup>, Bianca Stoiser<sup>1</sup>,  
Martina Strempl<sup>1</sup>, Manfred G. Sagmeister<sup>1</sup>

Clinical recruitment partners (in alphabetical order):

Sebastian Bauchinger<sup>1</sup>, Martin Benesch<sup>3</sup>, Astrid Ceolotto<sup>1</sup>, Ernst Eber<sup>2</sup>, Siegfried Gallistl<sup>1</sup>, Harald Haidl<sup>1</sup>, Almuthe Hauer<sup>1</sup>, Christa Hude<sup>1</sup>, Andreas Kapper<sup>7</sup>, Markus Keldorfer<sup>5</sup>, Sabine Löffler<sup>5</sup>, Tobias Niedrist<sup>6</sup>, Heidemarie Pilch<sup>5</sup>, Andreas Pflieger<sup>2</sup>, Klaus Pfurtscheller<sup>4</sup>, Siegfried Rödl<sup>4</sup>, Andrea Skrabl-Baumgartner<sup>1</sup>, Volker Strenger<sup>3</sup>, Elmar Wallner<sup>7</sup>

Author Affiliations:

<sup>1</sup> Department of Pediatrics and Adolescent Medicine, Division of General Pediatrics, Medical University of Graz, Graz, Austria

<sup>2</sup> Department of Pediatric Pulmonology, Medical University of Graz, Graz, Austria

<sup>3</sup> Department of Pediatric Hematooncology, Medical University of Graz, Graz, Austria

<sup>4</sup> Paediatric Intensive Care Unit, Medical University of Graz, Graz, Austria

<sup>5</sup> University Clinic of Pediatrics and Adolescent Medicine Graz, Medical University Graz, Graz, Austria

---

6Clinical Institute of Medical and Chemical Laboratory Diagnostics, Medical University Graz, Graz, Austria

7Department of Internal Medicine, State Hospital Graz II, Location West, Graz, Austria

SkylineDX

Principle investigator: Dennie Tempel 1

Co-investigators: Danielle van Keulen<sup>1</sup>, Annelieke M Strijbosch 1,

Author affiliations:

1 SkylineDx, Rotterdam, The Netherlands

Project partner BBMRI-ERIC

Maike K. Tauchert

Author affiliation:

Biobanking and BioMolecular Resources Research Infrastructure - European Research Infrastructure Consortium (BBMRI-ERIC), Neue Stiftingtalstrasse 2/B/6, 8010, Graz, Austria

LMU Munich Partner (Germany)

Principal Investigator:

Ulrich von Both<sup>1,2</sup> MD, FRCPC (all activities)

Research group:

Laura Kolberg<sup>1</sup> MSc (all activities)

Patricia Schmied<sup>1</sup> (Study physician), Irene Alba-Alejandre<sup>3</sup> MD (Study physician)

Clinical recruitment partners (in alphabetical order):

---

Katharina Danhauser, MD6, Nikolaus Haas, MD11, Florian Hoffmann, MD10, Matthias Griesse, MD7, Tobias Feuchtinger, MD5, Sabrina Juranek, MD4, Matthias Kappler, MD7, Eberhard Lurz, MD8, Esther Maier, MD4, Karl Reiter, MD10, Carola Schoen, MD10, Sebastian Schroepf, MD9

Author Affiliations:

<sup>1</sup> Division of Pediatric Infectious Diseases, Department of Pediatrics, Dr. von Hauner Children's Hospital, University Hospital, LMU Munich, Munich, Germany

<sup>2</sup> German Center for Infection Research (DZIF), Partner Site Munich, Munich, Germany

<sup>3</sup> Department of Gynecology and Obstetrics, University Hospital, LMU Munich, Munich, Germany

<sup>4</sup> Division of General Pediatrics, Department of Pediatrics, Dr. von Hauner Children's Hospital, University Hospital, LMU Munich, Munich, Germany

<sup>5</sup> Division of Pediatric Haematology & Oncology, Department of Pediatrics, Dr. von Hauner Children's Hospital, University Hospital, LMU Munich, Munich, Germany

<sup>6</sup> Division of Pediatric Rheumatology, Department of Pediatrics, Dr. von Hauner Children's Hospital, University Hospital, LMU Munich, Munich, Germany

<sup>7</sup> Division of Pediatric Pulmonology, Department of Pediatrics, Dr. von Hauner Children's Hospital, University Hospital, LMU Munich, Munich, Germany

<sup>8</sup> Division of Pediatric Gastroenterology, Department of Pediatrics, Dr. von Hauner Children's Hospital, University Hospital, LMU Munich, Munich, Germany

<sup>9</sup> Neonatal Intensive Care Unit, Department of Pediatrics, Dr. von Hauner Children's Hospital, University Hospital, LMU Munich, Munich, Germany

<sup>10</sup> Paediatric Intensive Care Unit, Department of Pediatrics, Dr. von Hauner Children's Hospital, University Hospital, LMU Munich, Munich, Germany

<sup>11</sup> Department of Pediatric Cardiology and Pediatric Intensive Care, University Hospital, LMU Munich, Germany

London School of Hygiene and Tropical Medicine (LSHTM)

Principal Investigator: Shunmay Yeung <sup>1,2,3</sup>

Research group:

Manuel Dewez<sup>1</sup> David Bath<sup>3</sup>, Elizabeth Fitchett<sup>1</sup>, Fiona Cresswell<sup>1</sup>

1. Clinical Research Department, Faculty of Infectious and Tropical Disease, London School of Hygiene and Tropical Medicine, London
2. Department of Paediatrics, St. Mary's Imperial College Hospital, London
3. Department of Global Health and Development, Faculty of Public Health and Policy, London School of Hygiene and Tropical Medicine, London