

Hands are frequently contaminated with fecal bacteria and enteric pathogens globally: A systematic review and meta-analysis

Molly E. Cantrell¹, Émile Sylvestre², Rahel Scheidegger³, Lou Curchod³, David M. Gute¹, Jeffrey K. Griffiths^{1,4,5}, Timothy R Julian^{2,6,7#*}, Amy J. Pickering^{1,8#*}

Affiliations:

¹ Department of Civil and Environmental Engineering, Tufts University, Medford, MA, 02155

² Eawag, Swiss Federal Institute of Aquatic Science and Technology, Dübendorf, CH-8600, Switzerland

³ ETH Zurich, Swiss Federal Institute of Technology, Zurich, CH-8092, Switzerland

⁴ Department of Public Health and Family Medicine, Tufts Medical School, Tufts University, Boston, MA, 02111

⁵ Friedman School of Nutrition Science and Policy, Tufts University, Boston, MA, 02111

⁶ Swiss Tropical and Public Health Institute, Basel, Switzerland

⁷ University of Basel, Basel, Switzerland

⁸ Department of Civil and Environmental Engineering, University of California, Berkeley

*Correspondence to: Tim.Julian@eawag.ch; pickering@berkeley.edu

#Authors contributed equally

Abstract

Enteric pathogen infections are a leading cause of morbidity and mortality globally, with the highest disease burden in low-income countries. Hands act as intermediaries in enteric pathogen transmission, transferring enteric pathogens between people and the environment through contact with food, water, and soil. In this study, we conducted a systematic review of prevalence and concentrations of fecal indicator microorganisms (i.e., *E. coli*, fecal coliform) and enteric pathogens on hands. We identified eighty studies, reporting 31,305 observations of hand contamination of people in community or household settings. The studies investigated 45 unique microorganisms, of which the most commonly reported indicators were *E. coli* and fecal coliforms. Hand contamination with 14 unique enteric pathogens was reported, with adenovirus

and rotavirus as the most frequent. Mean *E. coli* prevalence on hands was 40% [95% CI 18%-62%] and mean fecal coliform prevalence was 42% [95% CI 16%-69%]. Hands were more likely to be contaminated with *E. coli* in low/lower-middle-income countries (prevalence: 49% [25% - 72%]) than in upper-middle/high-income countries (6% [1% - 12%]). In low/lower-middle income countries, *E. coli* prevalence was higher in urban compared to rural settings (52% mean prevalence in urban versus 33% in rural), although substantial heterogeneity between studies limited confidence in this finding. The review also highlighted the importance of standardizing hand sampling methods, as hand rinsing was associated with greater fecal contamination compared to other sampling methods.

Introduction

Hands are an important, yet relatively understudied route of enteric pathogen transmission. Hands can facilitate direct exposure to pathogens (hand-to-mouth contacts), as well as indirect exposure through contact with drinking water, food, and fomites (Julian, 2016).

Several studies have implicated contaminated hands in child diarrheal disease risk (M. C. M. Mattioli et al., 2015; Pickering et al., 2018). A study of households in rural Bangladesh measured fecal contamination in hands, soil, water, flies, and food, and found that hands were the most strongly associated with increased subsequent risk of diarrheal illness among children under five years old (Pickering et al., 2018). In an exposure study in India, infants mouthing their own hands posed the second highest daily risk of enteric infection after soil ingestion (Vila-Guilera et al., 2021). A fecal exposure assessment model showed that children in Tanzania ingest a significantly greater amount of feces each day from hand-to-mouth contacts (0.93 mg) than from drinking water (0.098 mg) (M. C. M. Mattioli et al., 2015). Another Tanzanian study found that viral pathogens were more frequently found on hands than in drinking water (M. C. M. Mattioli et al., 2013).

The goal of this study is to determine the extent to which hands are contaminated with enteric pathogens and other fecal indicators. We further aimed to identify factors that influence the prevalence and concentrations of fecal and enteric pathogen contamination on hands, including age, gender, country income, urbanicity, climate, and hand sampling method.

Materials and Methods

We conducted a systematic review of fecal indicator microorganisms and enteric pathogen detection on hands following the PRISMA-P guidelines (see Supplemental Information for PRISMA-P Checklist and search terms). We included peer-reviewed published studies of all designs that measured fecal indicators or enteric pathogens on human hands for people in non-occupational settings, such as in households and communities. Studies were excluded for the following reasons: microorganisms measured were not enteric pathogens or fecal indicators; hands were artificially contaminated with bacteria; studies did not present primary data; studies were conducted in occupational settings such as food handling, farm, clinical, or laboratory settings; and/or dealt with food and animal contamination.

We conducted a meta-analysis to analyze the subset of studies with estimates of the prevalence rates (defined as the proportion of hands with detectable contamination) for *E. coli* and fecal coliforms. *E. coli* and fecal coliforms were chosen as the only fecal indicators or enteric pathogens with a sufficient number of studies to conduct a meta-analysis. Within the meta-analysis, we combined the prevalence rates of hand contamination using the inverse variance method to obtain a weighted average across individual studies. We modelled the mean proportion \hat{p} (the number of positive samples n_s divided by the total number of samples n), as a Bernoulli trial process. For the i^{th} study, the variance of the estimator of \hat{p} can be approximated with a normal distribution as follows:

$$\text{Var}(\hat{p}_i) = \frac{\hat{p}_i(1 - \hat{p}_i)}{n_i} \quad (1)$$

Using the inverse variance method, the weight for the i th study is then $w_i = 1/\text{Var}(\hat{p}_i)$. We used a double arcsine function to transform the prevalence \hat{p} to a value that is not constrained to the 0-1 range and back-transformed to \hat{p} after pooling (Barendregt et al., 2013). To calculate pooled sample prevalences, we chose an inverse variance heterogeneity (IVhet) model rather than the more conventional random-effects model. The advantage of the IVhet model is that it can maintain the individual study weights despite substantial between-study heterogeneity (Doi et al., 2015). We evaluated publication bias with Luis Furuya-Kanamori (LFK) index and Doi plots (Furuya-Kanamori et al., 2018). We performed analyses with the MetaXL add-in version 5.3 in Microsoft Excel and the *metafor* package in R (Viechtbauer, 2010).

We compared *E. coli* and fecal coliform prevalence between i) children and adults, ii) country income groups (low and lower-middle vs. upper-middle, and high-income), iii) urban and rural areas, iv) climate classifications (Köppen-Geiger), and v) types of hand sampling methods. We tested for differences between the mean pooled prevalence of two groups using a two-sample z-test allowing unequal variance. Country income levels were based on World Bank country income classifications (available via the *World Bank Data Help Desk*, <https://datahelpdesk.worldbank.org/>) for the year the study was conducted; if that information was not reported, then the year the study was published was used (see Supplemental Information for how fiscal year 2020 classifications are defined). The climate classifications were based on Köppen-Geiger Climate Classifications where zone A is tropical or equatorial, zone B is arid or dry, zone C is warm/mild temperate, zone D is continental, and zone E is polar (Society, 2019).

Results and Discussion

Fecal indicator bacteria and enteric pathogens

We identified 80 studies, which reported forty-five unique fecal indicator bacteria and enteric pathogens found on hands (n=31,305 observations). Of the 45 unique microorganisms reported, 14 were pathogens (inclusive of enteric and opportunistic pathogens) and the other 31 were fecal indicator bacteria. The most common indicators were *E. coli* (51 studies, or 65%), fecal coliforms (23 studies, or 29%), and enterococci (9 studies, or 12%, Table 1). The most commonly measured pathogens were adenovirus and rotavirus.

Table 1: Pathogens and indicators measured on hands as reported in the included studies

Type of Indicator	Indicator	Total Number of Studies	Prevalence				Concentration				References
			Number of Studies	Number of Samples	Percent Positive (% , average) ¹	Range (%)	Number of Studies	Number of Samples	Mean Concentration (log ₁₀ CFU/hand , simple weighted average by sample size)	Range	
Bacteria	Aerobic Plate Count ²	2	2	99	92	84 – 100	1	74	4.38	-	(Gorman et al., 2002, p.) (Li et al., 2014)
	Any multidrug-resistant organism (MDRO+)	1	1	190	3.7	-	0	-	-	-	(Gontjes et al., 2020)
	<i>Bacillus</i> spp	2	2	370	5.2	3 – 8.2	0	-	-	-	(Padaruth & Biranjia-Hurdoya 2015) (Ubheeram & Biranjia-Hurdoya 2017)
	<i>Bacteroidales</i> Cow ²	2	2	1185	93.2	89.6 – 97.5	0	-	-	-	(Fuhrmeister et al., 2019) (Schriewer et al., 2015)
	<i>Bacteroidales</i> General ¹	5	5	1333	84 [53, 100]	50 – 98.5	0	-	-	-	(Boehm et al., 2016) (Odagiri et al., 2016) (Pickering, Davis, et al., 2010a) (Pickering et al., 2011) (Schriewer et al., 2015)
	<i>Bacteroidales</i> Human ²	5	5	1126	19 [12, 28]	3 – 32.2	0	-	-	-	(Fuhrmeister et al., 2019) (Mattioli et al., 2013) (Odagiri et al., 2016) (Pickering et al., 2011) (Schriewer et al., 2015)
	<i>Campylobacter jejuni</i>	1	1	70	11.4	10 – 13	0	-	-	-	(Bauza, Madadi, et al., 2020)

¹ For indicators with 2-3 studies, percent positive is calculated as the unweighted arithmetic mean of the percent positive values reported by the individual studies. For indicators with at least 4 studies, percent positive was calculated using the explained meta-analysis and the 95% confidence interval is reported.

² Commonly used fecal indicator bacteria

<i>Clostridium perfringens</i>	1	0	-	-	-	1	900	1.54	-	(Islam et al., 2016)
Coagulase negative <i>Staphylococcus spp.</i>	3	3	1570	70.2	45 – 97.5	0	-	-	-	(Padaruth & Biranjia-Hurdoyal, 2015) (Ubheeram & Biranjia-Hurdoyal, 2017) (Vishwanath et al., 2019)
<i>Commensal flora</i>	1	1	133	31.5	-	0	-	-	-	(Kavitha et al., 2019)
Diarrheagenic <i>E. coli</i> (DEC) ³	2	2	1006	6 [2, 11]	0.3 – 19.6	0	-	-	-	(Fuhrmeister et al., 2019) (M. C. Mattioli et al., 2013)
<i>E. coli</i> ²	51	44	17530	40 [18, 62]	0 – 100	32	14597	1.59	-0.1 – 6.7	(Amir et al., 2017) (Bauza, Majorin, et al., 2020) (Bauza, Madadi, et al., 2020) (Berendes et al., 2017) (Boehm et al., 2016) (Ćurin & Pavić, 1999) (Davis et al., 2011) (de Wit & Rombouts, 1992) (Devamani et al., 2014) (Dodrill et al., 2011) (Dutta et al., 1997) (Ercumen et al., 2017) (Ercumen, Mertens, et al., 2018) (Ercumen, Pickering, et al., 2018) (Friedrich et al., 2017) (Fuhrmeister et al., 2019) (Ghuliani & Kaul, 1995) (Gil et al., 2014) (Greene et al., 2012) (Grimason et al., 2014) (Harris et al., 2016) (Harris et al., 2019) (Hartinger et al., 2016) (Hartinger et al., 2011) (Islam et al., 2016)

³ Diarrheagenic *E. coli* includes Enterohemorrhagic *E. coli* (EHEC, stx1, stx2, eaeA), Enteroinvasive *E. coli* (EIEC, ipaH), Enteropathogenic *E. coli* (EPEC), Enterotoxigenic *E. coli* (ETEC, stib/ltib), Shiga-toxin producing *E. coli* (STEC)

											(Judah et al., 2010) (Julian & Pickering, 2015) (Julian et al., 2013) (Kalter et al., 2010) (Kavitha et al., 2019) (Kim et al., 2019) (Kundu et al., 2018) (Kusuma et al., 2012) (Martínez-Bastidas et al., 2014) (Mattioli et al., 2015) (Mattioli et al., 2014) (Navab-Daneshmand et al., 2018) (Ngure et al., 2013) (Otsuka et al., 2019) (Padaruth & Biranjia-Hurdoya, 2015) (Pickering et al., 2018) (Pickering, Davis, et al., 2010) (Pickering, Boehm, et al., 2010) (Pickering et al., 2011) (Pinfold, 1990) (Ram et al., 2011) (Reddi et al., 2016) (Rothstein et al., 2019) (Saboori et al., 2013) (Ubheeram & Biranjia-Hurdoya, 2017) (Vishwanath et al., 2019)
	Enteroaggregative <i>E. coli</i> (EAEC)	2	2	92	14.3	7.7 – 19.6	0	-	-	-	(Fuhrmeister et al., 2019) (Mattioli et al., 2013)
	<i>Enterobacter</i> spp.	1	1	1200	0.83	0 – 1.8	0	-	-	-	(Vishwanath et al., 2019)
	<i>Enterobacteriaceae</i>	1	1	80	37.5	20 – 45	1	30	2.69	2.28 – 3.08	(de Wit & Rombouts, 1992)
	<i>Enterococc</i> ² (includes <i>Enterococcus</i> spp)	9	8	2298	13 [0, 71]	1.25 - 100	6	556	2.03	1.00 – 2.73	(Devamani et al., 2014) (Dodrill et al., 2011) (Harris et al., 2016) (Judah et al., 2010) (Julian & Pickering, 2015) (Mattioli et al., 2015)

											(Mattioli et al., 2014) (Pickering et al., 2011) (Vishwanath et al., 2019)
	<i>Enterococcus faecalis</i> ²	1	1	133	11	-	0	-	-	-	(Kavitha et al., 2019)
	Fecal bacteria ² (defined as total of fecal coliforms and enterococci)	1	1	72	31	-	1	72	2.22	1.72 – 2.58	(Kellogg et al., 2012)
	Fecal coliform ²	23	19	6790	42 [16, 69]	6 – 100	11	3864	1.51	0.12 – 8.29	(Boehm et al., 2016) (Budge et al., 2019) (Carabin et al., 2001) (Carabin et al., 1999) (Carrasco et al., 2008) (Dodrill et al., 2011) (Ekanem et al., 1983) (Friedrich et al., 2017) (Holaday et al., 1990) (Huda et al., 2019) (Islam et al., 2016) (Julian et al., 2013) (Kaltenthaler et al., 1996) (Laborde et al., 1993) (Luby et al., 2007) (Martínez-Bastidas et al., 2011) (Odagiri et al., 2016) (Petersen & Bressler, 1986) (Ram et al., 2011) (Reddi et al., 2016) (Schriewer et al., 2015) (Van, Marrow, et al., 1991) (Van, Wun, et al., 1991)
	<i>Fecal Streptococci</i> ²	6	4	6477	53 [3, 99]	7 – 98	5	5454	2.58	0.16 – 4.40	(Islam et al., 2016) (Kaltenthaler et al., 1995) (Kyriacou et al., 2009) (Pickering, Davis, et al., 2010b) (Pickering, Boehm, et al., 2010) (Pinfold, 1990)
	<i>Klebsiella</i> spp.	5	5	1919	3 [0, 9]	2.5 – 33.3	1	3	4.65	4.37 – 4.93	(Judah et al., 2010) (Kavitha et al., 2019)

											(Martínez Bastidas et al., 2014) (Ubheeram & Biranjia-Hurdoyal 2017) (Vishwanath et al., 2019)
Micrococcus spp.	2	2	370	10.2	2.9 – 17.5	0	-	-	-	(Padaruth & Biranjia-Hurdoyal, 2015) (Ubheeram & Biranjia-Hurdoyal 2017)	
Pathogenic <i>E. coli</i>	3	3	1036	33.4	22.1 – 41.3	0	-	-	-	(Fuhrmeister et al., 2019) (Mattioli et al., 2013) (Pickering et al., 2011)	
<i>Proteus</i> spp.	1	1	200	1.6	-	0	-	-	-	(Padaruth & Biranjia-Hurdoyal 2015)	
<i>Pseudomonas</i> spp.	2	2	1400	4.7	1.87 – 6	0	-	-	-	(Padaruth & Biranjia-Hurdoyal 2015) (VISHWANATH et al., 2019)	
Resistant gram-negative bacilli (R-GNB)	1	1	190	1.6	-	0	-	-	-	(Gontjes et al., 2020)	
<i>Salmonella</i> spp.	1	1	12	41.6	33.3 – 50	0	-	-	-	(Martínez Bastidas et al., 2014)	
<i>Serratia</i> spp.	1	1	12	83.3	-	0	-	-	-	(Martínez Bastidas et al., 2014)	
<i>Shigella</i> spp.	1	1	12	0	-	0	-	-	-	(Martínez Bastidas et al., 2014)	
<i>Shigella</i> spp. / EIEC	1	1	70	14.3	7 – 19	0	-	-	-	(Bauza, Madadi, et al., 2020)	
<i>Staphylococcus aureus</i>	3	3	565	50.3	19 – 92	1	7	5.93	5.74 – 6.11	(Ahoyo et al., 2011) (Kavitha et al., 2019) (Martínez Bastidas et al., 2014)	
<i>Streptococcus Faecalis</i> ²	1	1	18	50	-	0	-	-	-	(Ćurin & Pavić, 1999)	
<i>Streptococcus</i> spp.	2	2	112	22.7	-	0	-	-	-	(Ubheeram & Biranjia-Hurdoyal 2017)	

medRxiv preprint doi: <https://doi.org/10.1101/2022.07.11.22277510>; this version posted July 12, 2022. The copyright holder for this preprint (which was not certified by peer review) is the author/funder, who has granted medRxiv a license to display the preprint in perpetuity. It is made available under a [CC-BY-NC-ND 4.0 International license](https://creativecommons.org/licenses/by-nc-nd/4.0/).

	Total coliform ²	7	5	930	47 [16, 79]	27.5 – 97.8	4	1096	1.91	1.24 – 2.45	(Gil et al., 2014) (S. M. Hartinger et al., 2011) (Holaday et al., 1995) (Islam et al., 2016) (Judah et al., 2010) (Li et al., 2014) (Rothstein et al., 2019)
	<i>Vancomycin-resistant enterococci (VRE+)</i>	1	1	190	0.5	-	0	-	-	-	(Gontjes et al., 2020)
	<i>Vibrio cholerae</i>	1	1	70	14.3	12 – 16	0	-	-	-	(Bauza, Madadi, et al., 2020)
Viruses	Adenovirus	4	4	491	11 [1, 29]	4.5 – 50	0	-	-	-	(Bauza, Madadi, et al., 2020) (Mattioli et al., 2013) (Mattioli et al., 2014) (Oristo et al., 2017)
	<i>CrAssphage</i> ²	1	1	30	60	0	0	-	-	-	(Park et al., 2020)
	Enterovirus	3	3	390	8.8	6.3 – 11.1	0	-	-	-	(Mattioli et al., 2013) (Mattioli et al., 2014) (Pickering et al., 2011)
	Hepatitis A virus	1	1	12	17	-	0	-	-	-	(Martínez Bastidas et al., 2014)
	Norovirus	3	3	271	5.3	0 – 10	0	-	-	-	(Li et al., 2014) (Mattioli et al., 2015) (Oristo et al., 2017)
	Norovirus GII	1	1	914	3.5	3.1 – 4.2	0	-	-	-	(Fuhrmeister et al., 2019)
	Rotavirus	4	4	325	1 [0, 8]	0 – 100	0	-	-	-	(Keswick et al., 1983) (Martínez Bastidas et al., 2014) (Mattioli et al., 2013) (Mattioli et al., 2014)
Protozoa	<i>Giardia Lamblia</i>	2	2	926	34.9	2.3 – 67	0	-	-	-	(Fuhrmeister et al., 2019) (Martínez Bastidas et al., 2014)

medRxiv preprint doi: <https://doi.org/10.1101/2022.07.11.22277510>; this version posted July 12, 2022. The copyright holder for this preprint (which was not certified by peer review) is the author/funder, who has granted medRxiv a license to display the preprint in perpetuity. It is made available under a [CC-BY-NC-ND 4.0 International license](#).

Multicellular animal parasites	Soil-transmitted helminths ⁴	2	2	466	8.7	0.87 - 16.6	0	-	-	-
--------------------------------	---	---	---	-----	-----	-------------	---	---	---	---

(Cranston et al., 2015)
(Steinbaum et al., 2017)

⁴ Additional papers that were not found using search criteria, but were known by authors

Prevalence of pathogen and fecal indicator contamination on hands

Of the 80 studies identified, 73 (91%) reported contamination prevalence rates for the target pathogen or indicator. The average prevalence rate across all 45 indicators was 35.7% (median: 27.0%), ranging from 0% (no detectable contamination) to 100% (detectable contamination on all study participants). *E. coli* and fecal coliform contamination on hands were common among the study populations. Overall, mean *E. coli* prevalence was 40% (range: 0 - 100%) and mean fecal coliform prevalence was 42% (range: 6 - 100%). Our findings confirm that hands are frequently contaminated with fecal bacteria, but that contamination levels are highly variable between studies. Our finding of frequent contamination of hands is supported by previous work demonstrating the role of hands in connecting sources of fecal contamination (e.g. soil, floor, drain) with opportunities for subsequent exposures (e.g. mouth, bath, handwashing) (Wang et al., 2017).

Country income

Country income was significantly correlated with hand contamination levels. Hands of people in low-income countries had significantly higher prevalence of *E. coli* and fecal coliforms than those in high-income countries. The mean [95% Confidence Interval] estimate was 49% [25% - 72%] *E. coli* prevalence in low-income versus 6% [1% - 12%] in high-income ($p = 3.9 \times 10^{-4}$) and 71% [44% - 95%] fecal coliform prevalence in low-income versus 18% [7% - 31%] in high-income ($p = 1.4 \times 10^{-4}$) (Figure 1, Figure S3). We noted substantial between-study heterogeneities within each subgroup, as indicated by the high I^2 values, which is an estimate of the proportion of observed variance attributable to study heterogeneity (low-income: $I^2 = 100\%$; high-income: $I^2 = 94\%$). High heterogeneity suggests hand contamination prevalence is largely study or site-specific.

The observed trend that hand contamination is generally – but not universally - more prevalent in low-income countries than high-income countries may be attributable to differences in access to water, sanitation, and hygiene, including hand washing facilities with soap and water. Access to handwashing facilities is strongly related to the sociodemographic index (SDI; a composite measure including income per capita, education, and fertility) (Brauer et al., 2020). Previous work has also demonstrated that hands are quickly re-contaminated after handwashing

in many tropical low-income settings (within minutes), potentially due to high levels of fecal contamination on surfaces and in soils in the domestic environment (Ram et al., 2011; Pickering et al., 2011).

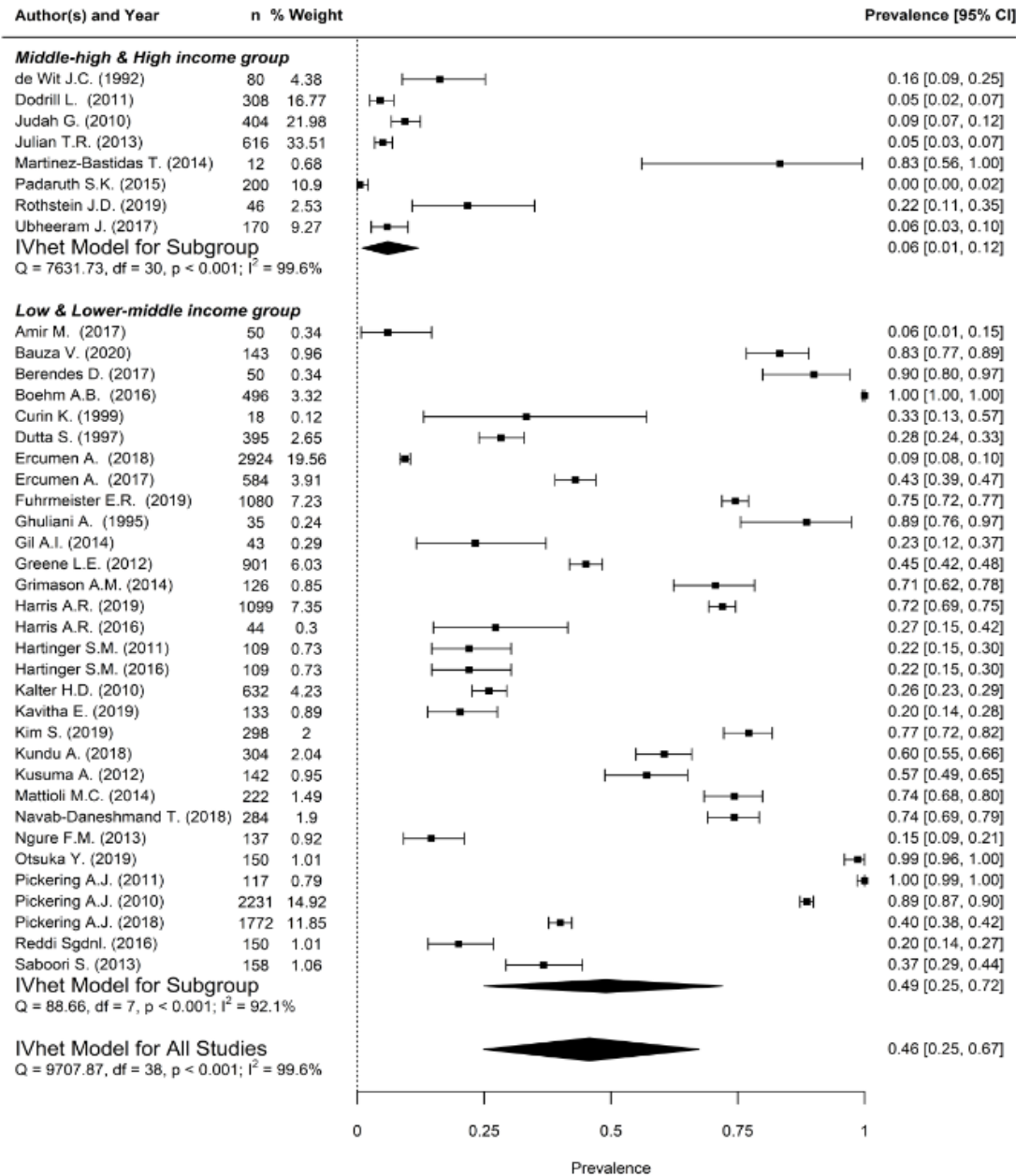


Figure 1. *E. coli* prevalence on hands by country income level. Pooled estimates for all studies and subgroups were evaluated with an inverse variance heterogeneity (IVhet) model.

Urban compared to rural areas

In low/lower-middle income countries, *E. coli* prevalence was higher in urban areas than rural areas (52% mean prevalence in urban versus 33% in rural; $p = 0.045$) (Figure 2). However, there was still substantial heterogeneity between studies within rural as well as urban areas (rural: $I^2 = 99.2\%$; urban: I^2 of 99.7%). This analysis indicates that subgrouping into urban versus rural areas does not reduce the between-study heterogeneity measured in the low/lower-middle income group. Notably, comparisons of hand contamination between urban and rural settings could only be conducted for *E. coli* prevalence in low/lower-middle income countries because there were no studies that measured *E. coli* in rural areas in upper-middle/high income countries and too few studies available to assess differences in fecal coliform levels (2 studies in urban, 6 studies in rural settings).

Since two of the studies represented in the *E. coli* comparison, Pickering 2010 and Ercumen 2018, are weighted higher than all other studies, we conducted a sensitivity analysis in which these studies were removed (Figure S6). The analysis results still showed a difference between urban and rural settings, but the magnitude of the difference was decreased (mean prevalence in urban areas was 61% [95% CI 33%-87%] and the mean prevalence in rural areas was 46% [95% CI 30% - 71%]).

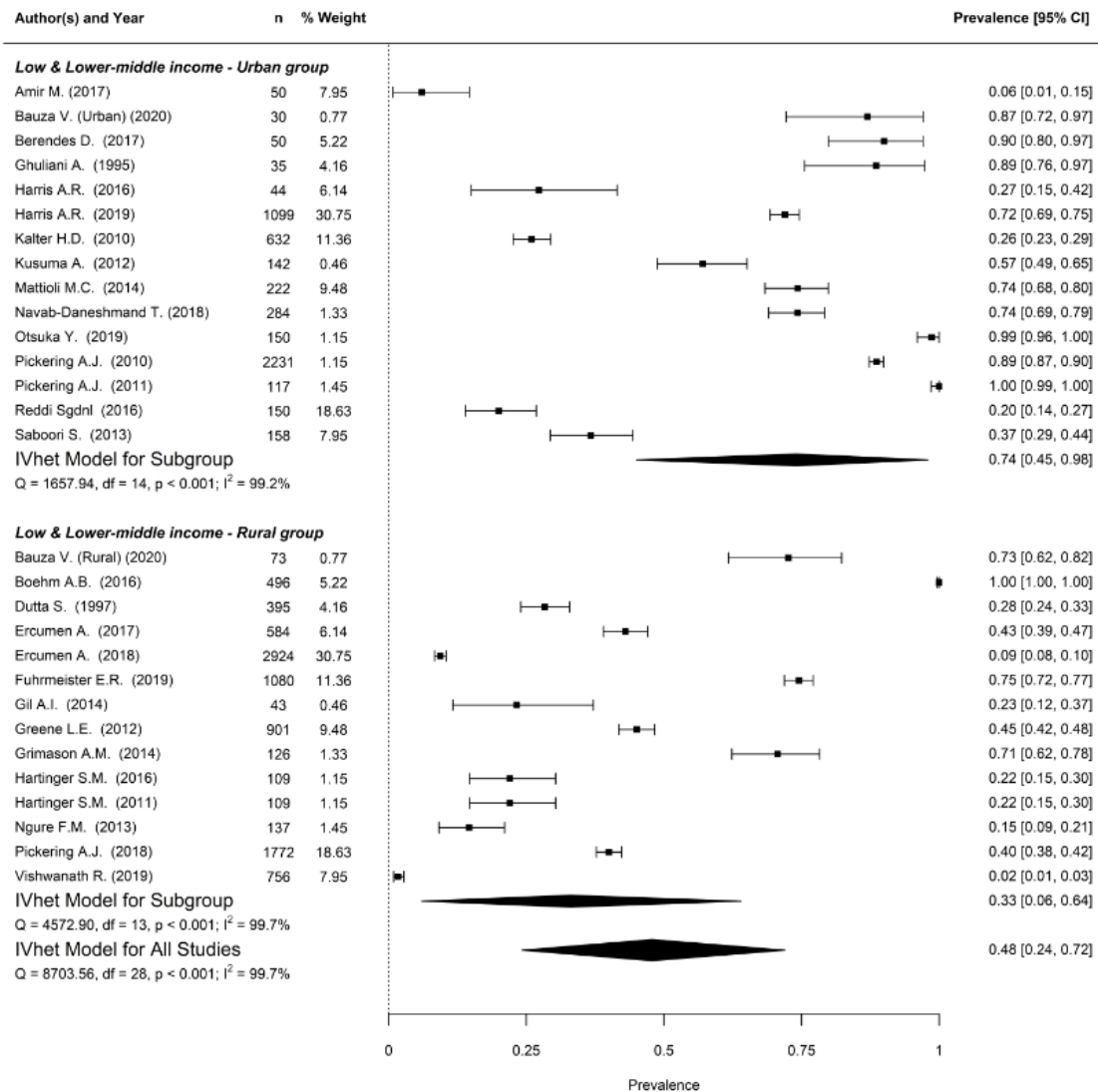


Figure 2: *E. coli* prevalence Urban vs. Rural in low/low-middle income countries

The cause of higher levels of hand contamination in urban areas is unclear, but may be attributable to high population density combined with inadequate sanitation (Nadimpalli et al. 2020). Many studies included in this review from urban low-income settings were conducted in informal settlements in contrast to more established, wealthier urban communities (e.g. Kibera, a slum within Nairobi, Kenya is included in this dataset). Populations living in densely populated, low-income communities often share sanitation facilities. Shared sanitation facilities have been shown to be less likely to be clean than private facilities (Heijnen et al., 2015). Another potential explanation is that population density (persons per km²) is correlated with higher rates of environmental fecal contamination, as shown in Egypt where *E. coli* drinking water

contamination was increased in areas with the highest population densities (Fakhr et al., 2016). Further studies are needed to investigate the role of population density gradients on fecal or pathogen hand contamination.

Adults compared to children

There were no clear differences in *E. coli* or fecal coliform prevalence between adults (16 years old and above) and children (birth to 15 years old) even when subgrouping by income level (Figures S15, S16, S19, S20). Inclusion of age as an explanatory factor within urban and rural groups in low/lower-middle income countries also did not reduce observed heterogeneity in the meta-analysis (Figures S17, S18). A potential explanation is that hand hygiene behavior between adults and children is highly correlated (Lee et al., 2015). Hand contamination is also strongly influenced by environmental contamination. Similar levels of contamination between adults and children could be a result of how difficult it is to keep hands free of fecal contamination in high-disease burden settings lacking safely managed sanitation (Pickering et al., 2011; Ram et al., 2011; Julian & Pickering, 2015). The results align with other studies that have found no difference in contamination levels with direct comparisons between adults and children (Bauza et al., 2020; Gil et al., 2014).

Climate classifications

There were no clear differences in prevalence between climate groups for *E. coli* or fecal coliforms. The only comparison that showed a significant difference (p-value of 2.11×10^{-11}) was fecal coliform prevalence in tropical areas (classification A; 82% mean prevalence [95% CI 52%-100%]) versus temperate areas (classification C; 16% mean prevalence [95% CI 9%-23%]). However, this comparison may be confounded by a strong correlation between tropical settings and low-income settings.

Gender

Although analysis by gender was intended, very few of the identified studies reported gender. Three studies reported stratified prevalence values for males and females, while 5 additional studies reported a comparison between genders. Within 7 of these studies, which all enrolled school children, 5 found that male students had higher levels of fecal indicator bacteria,

one found that females had higher levels of fecal indicator bacteria, and one found no statistical difference between genders. Potential reasons for higher rates of fecal contamination on male hands relative to female hands include differences in hygiene and/or interactions with the environment (playing sports and/or in soil) (Mbouthieu Teumta et al., 2019; Guzek et al., 2020; *Another US Airport Travel Hazard - Dirty Hands*, n.d.; Johnson et al., 2003).

Sampling methods

Among the 80 studies, 48 (60%) used hand rinse samples, 19 (24%) used swab samples, 12 (15%) used impressions, and 1 study (1%) did not report the method used (see SI for method details). Rinse samples had a higher mean prevalence for *E. coli* (0.51 [95% CI 0.25, 0.76]) than swab samples (0.14 [95% CI 0.00, 0.35]). Similarly, rinse samples had a higher mean prevalence for fecal coliform (0.63 [95% CI 0.29, 0.94]) than impression samples (0.27 [95% CI 0.02, 0.57]). Only the *E. coli* rinse *versus* swab comparison was significant (p-value = 0.026). For fecal coliform rinse *versus* impression the p-value was 0.102. See Figures S22 and S26 for detailed comparisons. These findings show that hand rinse sampling may be more sensitive at recovering fecal indicator bacteria from hands than swabs and possibly impression plates, in line with prior research from both studies identified in this review as well as what has been reported for hand microbiome studies (Nagel Gravning et al., 2021; Zhang et al., 2012). Standardization of sampling methods could improve the sensitivity of studies and facilitate the identification and assessment of risk factors for hand contamination.

Conclusion

Frequent fecal contamination and many pathogens, including enteric and opportunistic pathogens, are found on hands globally. Hand contamination was highest in low/lower-middle income countries where diarrheal and enteric infections are also the most prevalent. Given the role of hands in transferring fecal microbes between people and the environment, hands could be viewed as sentinel indicators of human exposure to enteric pathogens. Nevertheless, as this review shows, few studies have measured enteric pathogens on hands. Developing and implementing standardized methods to detect pathogens on hands would improve our understanding of the role of hands in human exposure to protozoan, bacteria, and viral pathogens, and provide opportunities for cross-study comparisons, including meta-analyses.

References

Ahoyo, T. A., Fatombi, K. J., Boco, M., Aminou, T., & Dramane, K. L. (2011). Impact de la qualité de l'eau et de l'assainissement sur la santé des enfants en milieu périurbain au Bénin: Cas des zones sanitaires Savalou-Banté et Dassa-Glazoué. *Médecine tropicale*: revue du Corps de santé colonial, 71(3), 281–285.

Amir, M., Riaz, M., Chang, Y.-F., Akhtar, S., Yoo, S., SHEIKH, A., & Kashif, M. (2017). Impact of unhygienic conditions during slaughtering and processing on spread of antibiotic resistant *Escherichia coli* from poultry. *Microbiology Research*, 8.

<https://doi.org/10.4081/mr.2017.7330>

Analysis of Gender-Dependent Personal Protective Behaviors in a National Sample: Polish Adolescents' COVID-19 Experience (PLACE-19) Study. (n.d.). Retrieved April 9, 2021, from

<https://www.ncbi.nlm.nih.gov/pmc/articles/PMC7459707/>

Another US airport travel hazard—Dirty hands. (n.d.). EurekaAlert! Retrieved December 5, 2020, from http://www.eurekaalert.org/pub_releases/2003-09/asfm-aaa091103.php

Barendregt, J. J., Doi, S. A., Lee, Y. Y., Norman, R. E., & Vos, T. (2013). Meta-analysis of prevalence. *Journal of Epidemiology and Community Health*, 67(11), 974–978.

<https://doi.org/10.1136/jech-2013-203104>

Bauza, V., Madadi, V., Ocharo, R., Nguyen, T. H., & Guest, J. S. (2020). Enteric pathogens from water, hands, surface, soil, drainage ditch, and stream exposure points in a low-income neighborhood of Nairobi, Kenya. *Science of The Total Environment*, 709, 135344.

<https://doi.org/10.1016/j.scitotenv.2019.135344>

Bauza, V., Majorin, F., Routray, P., Sclar, G. D., Caruso, B. A., & Clasen, T. (2020). Child feces management practices and fecal contamination: A cross-sectional study in rural Odisha, India. *Science of The Total Environment*, 709, 136169.

<https://doi.org/10.1016/j.scitotenv.2019.136169>

Berendes, D., Kirby, A., Clennon, J. A., Raj, S., Yakubu, H., Leon, J., Robb, K., Kartikeyan, A., Hemavathy, P., Gunasekaran, A., Ghale, B., Kumar, J. S., Mohan, V. R., Kang, G., & Moe, C. (2017). The Influence of Household- and Community-Level Sanitation and Fecal Sludge Management on Urban Fecal Contamination in Households and Drains and Enteric Infection in Children. *The American Journal of Tropical Medicine and Hygiene*, 96(6), 1404–1414. <https://doi.org/10.4269/ajtmh.16-0170>

Boehm, A. B., Wang, D., Ercumen, A., Shea, M., Harris, A. R., Shanks, O. C., Kelty, C., Ahmed, A., Mahmud, Z. H., Arnold, B. F., Chase, C., Kullmann, C., John M. Colford, J., Luby, S. P., & Pickering, A. J. (2016, October 19). Occurrence of Host-Associated Fecal Markers on Child Hands, Household Soil, and Drinking Water in Rural Bangladeshi Households (world) [Rapid-communication]. American Chemical Society. <https://doi.org/10.1021/acs.estlett.6b00382>

Brauer, M., Zhao, J. T., Bennett, F. B., & Stanaway, J. D. (2020). Global Access to Handwashing: Implications for COVID-19 Control in Low-Income Countries. *Environmental Health Perspectives*, 128(5). <https://doi.org/10.1289/EHP7200>

Buckalew, D. W., Hartman, L. J., Grimsley, G. A., Martin, A. E., & Register, K. M. (2006). A long-term study comparing membrane filtration with Colilert® defined substrates in detecting fecal coliforms and *Escherichia coli* in natural waters. *Journal of Environmental Management*, 80(3), 191–197. Scopus. <https://doi.org/10.1016/j.jenvman.2005.08.024>

Budge, S., Hutchings, P., Parker, A., Tyrrel, S., Tulu, T., Gizaw, M., & Garbutt, C. (2019). Do domestic animals contribute to bacterial contamination of infant transmission pathways? Formative evidence from Ethiopia. *Journal of Water and Health*, 17(5), 655–669. <https://doi.org/10.2166/wh.2019.224>

Carabin, H., Gyorkos, T. W., Joseph, L., Payment, P., & Soto, J. C. (2001). Comparison of methods to analyse imprecise faecal coliform count data from environmental samples. *Epidemiology and Infection*, 126(2), 181–190.

Carabin, Hélène, Gyorkos, T. W., Soto, J. C., Joseph, L., Payment, P., & Collet, J.-P. (1999). Effectiveness of a Training Program in Reducing Infections in Toddlers Attending Day Care Centers. *Epidemiology*, 10(3), 219–227.

Carrasco, L., Mena, K. D., Mota, L. C., Ortiz, M., Behraves, C. B., Gibbs, S. G., Bristol, J. R., Mayberry, L., & Cardenas, V. M. (2008). Occurrence of faecal contamination in households along the US–Mexico border. *Letters in Applied Microbiology*, 46(6), 682–687.

<https://doi.org/10.1111/j.1472-765X.2008.02378.x>

Cranston, I., Potgieter, N., Mathebula, S., & Ensink, J. H. J. (2015). Transmission of *Enterobius vermicularis* eggs through hands of school children in rural South Africa. *Acta Tropica*, 150, 94–96. <https://doi.org/10.1016/j.actatropica.2015.07.001>

Ćurin, K., & Pavić, S. (1999). Hygienic conditions in elementary and secondary schools in the county of Split-Dalmatia. *Arhiv Za Higijenu Rada i Toksikologiju*.

Davis, J., Pickering, A. J., Rogers, K., Mamuya, S., & Boehm, A. B. (2011). The effects of informational interventions on household water management, hygiene behaviors, stored drinking water quality, and hand contamination in peri-urban Tanzania. *The American Journal of Tropical Medicine and Hygiene*, 84(2), 184–191. <https://doi.org/10.4269/ajtmh.2011.10-0126>

de Wit, J. C., & Rombouts, F. M. (1992). Faecal micro-organisms on the hands of carriers: *Escherichia coli* as model for *Salmonella*. *Zentralblatt Fur Hygiene Und Umweltmedizin = International Journal of Hygiene and Environmental Medicine*, 193(3), 230–236.

Devamani, C., Norman, G., & Schmidt, W.-P. (2014). A Simple Microbiological Tool to Evaluate the Effect of Environmental Health Interventions on Hand Contamination. *International Journal of Environmental Research and Public Health*, 11(11), 11846–11859.

<https://doi.org/10.3390/ijerph111111846>

Do World Bank Country Classifications Hurt the Poor? (n.d.). Retrieved January 1, 2021, from <https://www.globalpolicy.org/social-and-economic-policy/the-three-sisters-and-other-institutions/the-world-bank/51412-do-world-bank-country-classifications-hurt-the-poor.html>

Dodrill, L., Schmidt, W.-P., Cobb, E., Donachie, P., Curtis, V., & Barra, M. de. (2011). Male commuters in north and south England: Risk factors for the presence of faecal bacteria on hands. *BMC Public Health*, 11, 31–31. <https://doi.org/10.1186/1471-2458-11-31>

Doi, S. A. R., Barendregt, J. J., Khan, S., Thalib, L., & Williams, G. M. (2015). Advances in the meta-analysis of heterogeneous clinical trials I: The inverse variance heterogeneity model. *Contemporary Clinical Trials*, 45, 130–138. <https://doi.org/10.1016/j.cct.2015.05.009>

Dutta, S., Mondal, S. K., Saha, M. R., Sengupta, P. G., Gupta, D. N., Ghosh, S., & Sircar, B. K. (1997). Isolation of *Escherichia coli* to detect faecal contamination of infants and their mothers in West Bengal. *Journal of Diarrhoeal Diseases Research*, 15(3), 173–176.

Edmonds-Wilson, S. L., Nurinova, N. I., Zapka, C. A., Fierer, N., & Wilson, M. (2015). Review of human hand microbiome research. *Journal of Dermatological Science*, 80(1), 3–12. <https://doi.org/10.1016/j.jdermsci.2015.07.006>

Ekanem, E. E., DuPont, H. L., Pickering, L. K., Selwyn, B. J., & Hawkins, C. M. (1983). Transmission dynamics of enteric bacteria in day-care centers. *American Journal of Epidemiology*, 118(4), 562–572. <https://doi.org/10.1093/oxfordjournals.aje.a113661>

Ercumen, A., Mertens, A., Arnold, B. F., Benjamin-Chung, J., Hubbard, A. E., Ahmed, M. A., Kabir, M. H., Rahman Khalil, Md. M., Kumar, A., Rahman, Md. S., Parvez, S. M., Unicomb, L., Rahman, M., Ram, P. K., Clasen, T., Luby, S. P., & Colford, J. M. (2018). Effects of Single and Combined Water, Sanitation and Handwashing Interventions on Fecal Contamination in the Domestic Environment: A Cluster-Randomized Controlled Trial in Rural Bangladesh. *Environmental Science & Technology*, 52(21), 12078–12088. <https://doi.org/10.1021/acs.est.8b05153>

Ercumen, A., Pickering, A. J., Kwong, L. H., Arnold, B. F., Parvez, S. M., Alam, M., Sen, D., Islam, S., Kullmann, C., Chase, C., Ahmed, R., Unicomb, L., Luby, S. P., & Colford, J. M. (2017). Animal Feces Contribute to Domestic Fecal Contamination: Evidence from *E. coli* Measured in Water, Hands, Food, Flies, and Soil in Bangladesh. *Environmental Science & Technology*, 51(15), 8725–8734. <https://doi.org/10.1021/acs.est.7b01710>

Ercumen, A., Pickering, A. J., Kwong, L. H., Mertens, A., Arnold, B. F., Benjamin-Chung, J., Hubbard, A. E., Alam, M., Sen, D., Islam, S., Rahman, Md. Z., Kullmann, C., Chase, C., Ahmed, R., Parvez, S. M., Unicomb, L., Rahman, M., Ram, P. K., Clasen, T., ... Colford, J. M. (2018). Do Sanitation Improvements Reduce Fecal Contamination of Water, Hands, Food, Soil, and Flies? Evidence from a Cluster-Randomized Controlled Trial in Rural Bangladesh. *Environmental Science & Technology*, 52(21), 12089–12097. <https://doi.org/10.1021/acs.est.8b02988>

Exposure Factors Handbook—Chapter 7: Dermal Exposure Factors. (2011). 77.

Fakhr, A. E., Gohar, M. K., & Atta, A. H. (2016). Impact of Some Ecological Factors on Fecal Contamination of Drinking Water by Diarrheogenic Antibiotic-Resistant *Escherichia coli* in Zagazig City, Egypt. *International Journal of Microbiology*, 2016. <https://doi.org/10.1155/2016/6240703>

Friedrich, M. N. D., Julian, T. R., Kappler, A., Nhwatiwa, T., & Mosler, H.-J. (2017). Handwashing, but how? Microbial effectiveness of existing handwashing practices in high-density suburbs of Harare, Zimbabwe. *American Journal of Infection Control*, 45(3), 228–233. <https://doi.org/10.1016/j.ajic.2016.06.035>

Fuhrmeister, E. R., Ercumen, A., Pickering, A. J., Jeanis, K. M., Ahmed, M., Brown, S., Arnold, B. F., Hubbard, A. E., Alam, M., Sen, D., Islam, S., Kabir, M. H., Kwong, L. H., Islam, M., Unicomb, L., Rahman, M., Boehm, A. B., Luby, S. P., Colford, J. M., & Nelson, K. L. (2019). Predictors of Enteric Pathogens in the Domestic Environment from Human and Animal Sources

in Rural Bangladesh. *Environmental Science & Technology*, 53(17), 10023–10033.

<https://doi.org/10.1021/acs.est.8b07192>

Furuya-Kanamori, L., Barendregt, J. J., & Doi, S. A. R. (2018). A new improved graphical and quantitative method for detecting bias in meta-analysis. *International Journal of Evidence-Based Healthcare*, 16(4), 195–203. <https://doi.org/10.1097/XEB.0000000000000141>

Ghuliani, A., & Kaul, M. (1995). Contamination of weaning foods and transmission of *E. coli* in causation of infantile diarrhea in low income group in Chandigarh. *Indian Pediatrics*, 32(5), 539–542.

Gibney, K. B., O’Toole, J., Sinclair, M., & Leder, K. (2017). Burden of Disease Attributed to Waterborne Transmission of Selected Enteric Pathogens, Australia, 2010. *The American Journal of Tropical Medicine and Hygiene*, 96(6), 1400–1403. <https://doi.org/10.4269/ajtmh.16-0907>

Gil, A. I., Lanata, C. F., Hartinger, S. M., Mäusezahl, D., Padilla, B., Ochoa, T. J., Lozada, M., Pineda, I., & Verastegui, H. (2014). Fecal contamination of food, water, hands, and kitchen utensils at the household level in rural areas of Peru. *Journal of Environmental Health*, 76(6), 102–106.

Goddard, F. G. B., Pickering, A. J., Ercumen, A., Brown, J., Chang, H. H., & Clasen, T. (2020). Faecal contamination of the environment and child health: A systematic review and individual participant data meta-analysis. *The Lancet Planetary Health*, 4(9), e405–e415.

[https://doi.org/10.1016/S2542-5196\(20\)30195-9](https://doi.org/10.1016/S2542-5196(20)30195-9)

Gontjes, K. J., Gibson, K. E., Lansing, B., Cassone, M., & Mody, L. (2020). Contamination of Common Area and Rehabilitation Gym Environment with Multidrug-Resistant Organisms. *Journal of the American Geriatrics Society*, 68(3), 478–485. <https://doi.org/10.1111/jgs.16284>

Gorman, R., Bloomfield, S., & Adley, C. C. (2002). A study of cross-contamination of food-borne pathogens in the domestic kitchen in the Republic of Ireland. *International Journal of Food Microbiology*, 76(1), 143–150. [https://doi.org/10.1016/S0168-1605\(02\)00028-4](https://doi.org/10.1016/S0168-1605(02)00028-4)

Greene, L. E., Freeman, M. C., Akoko, D., Saboori, S., Moe, C., & Rheingans, R. (2012). Impact of a School-Based Hygiene Promotion and Sanitation Intervention on Pupil Hand Contamination in Western Kenya: A Cluster Randomized Trial. *The American Journal of Tropical Medicine and Hygiene*, 87(3), 385–393. <https://doi.org/10.4269/ajtmh.2012.11-0633>

Grimason, A. M., Masangwi, S. J., Morse, T. D., Jabu, G. C., Beattie, T. K., Taulo, S. E., & Lungu, K. (2014). Knowledge, awareness and practice of the importance of hand-washing amongst children attending state run primary schools in rural Malawi. *International Journal of Environmental Health Research*, 24(1), 31–43. <https://doi.org/10.1080/09603123.2013.782601>

Gronewold, A. D., & Wolpert, R. L. (2008). Modeling the relationship between most probable number (MPN) and colony-forming unit (CFU) estimates of fecal coliform concentration. *Water Research*, 42(13), 3327–3334. <https://doi.org/10.1016/j.watres.2008.04.011>

Guzek, D., Skolmowska, D., & Głabska, D. (2020). Analysis of Gender-Dependent Personal Protective Behaviors in a National Sample: Polish Adolescents' COVID-19 Experience (PLACE-19) Study. *International Journal of Environmental Research and Public Health*, 17(16). <https://doi.org/10.3390/ijerph17165770>

Harris, A. R., Pickering, A. J., Boehm, A. B., Mrisho, M., & Davis, J. (2019). Comparison of analytical techniques to explain variability in stored drinking water quality and microbial hand contamination of female caregivers in Tanzania. *Environmental Science: Processes & Impacts*, 21(5), 893–903. <https://doi.org/10.1039/C8EM00460A>

Harris, A. R., Pickering, A. J., Harris, M., Doza, S., Islam, M. S., Unicomb, L., Luby, S., Davis, J., & Boehm, A. B. (2016). Ruminants Contribute Fecal Contamination to the Urban Household

Environment in Dhaka, Bangladesh. *Environmental Science & Technology*, 50(9), 4642–4649.
<https://doi.org/10.1021/acs.est.5b06282>

Hartinger, S., Lanata, C., Hattendorf, J., Verastegui, H., Gil, A., Wolf, J., & Mäusezahl, D. (2016). Improving household air, drinking water and hygiene in rural Peru: A community-randomized–controlled trial of an integrated environmental home-based intervention package to improve child health. *International Journal of Epidemiology*, 45(6), 2089–2099.

<https://doi.org/10.1093/ije/dyw242>

Hartinger, S. M., Lanata, C. F., Hattendorf, J., Gil, A. I., Verastegui, H., Ochoa, T., & Mäusezahl, D. (2011). A community randomised controlled trial evaluating a home-based environmental intervention package of improved stoves, solar water disinfection and kitchen sinks in rural Peru: Rationale, trial design and baseline findings. *Contemporary Clinical Trials*, 32(6), 864–873. <https://doi.org/10.1016/j.cct.2011.06.006>

Heijnen, M., Routray, P., Torondel, B., & Clasen, T. (2015). Shared Sanitation versus Individual Household Latrines in Urban Slums: A Cross-Sectional Study in Orissa, India. *The American Journal of Tropical Medicine and Hygiene*, 93(2), 263–268. <https://doi.org/10.4269/ajtmh.14-0812>

Holaday, B., Pantell, R., Lewis, C., & Gilliss, C. L. (1990). Patterns of fecal coliform contamination in day-care centers. *Public Health Nursing (Boston, Mass.)*, 7(4), 224–228.

<https://doi.org/10.1111/j.1525-1446.1990.tb00640.x>

Holaday, B., Waugh, G., Moukaddem, V. E., West, J., & Harshman, S. (1995). Diaper type and fecal contamination in child day care. *Journal of Pediatric Health Care: Official Publication of National Association of Pediatric Nurse Associates & Practitioners*, 9(2), 67–74.

[https://doi.org/10.1016/s0891-5245\(05\)80004-5](https://doi.org/10.1016/s0891-5245(05)80004-5)

Huda, T. Md. N., Schmidt, W.-P., Pickering, A. J., Unicomb, L., Mahmud, Z. H., Luby, S. P., & Biran, A. (2019). Effect of Neighborhood Sanitation Coverage on Fecal Contamination of the

Household Environment in Rural Bangladesh. *The American Journal of Tropical Medicine and Hygiene*, 100(3), 717–726. <https://doi.org/10.4269/ajtmh.16-0996>

Islam, M. S., Mahmud, Z. H., Islam, M. S., Zaman, R. U., Islam, M. R., Gope, P. S., Islam, K., Jahan, H., Opel, A., Shaha, G. C., Faruque, S. M., & Clemens, J. D. (2016). Faecal contamination of commuters' hands in main vehicle stations in Dhaka city, Bangladesh. *Transactions of The Royal Society of Tropical Medicine and Hygiene*, 110(6), 367–372.

<https://doi.org/10.1093/trstmh/trw037>

<https://doi.org/10.4269/ajtmh.15-0555>

Johnson, H. D., Sholcosky, D., Gabello, K., Ragni, R., & Ogonosky, N. (2003). Sex Differences in Public Restroom Handwashing Behavior Associated with Visual Behavior Prompts.

Perceptual and Motor Skills, 97(3), 805–810. <https://doi.org/10.2466/pms.2003.97.3.805>

Judah, G., Donachie, P., Cobb, E., Schmidt, W., Holland, M., & Curtis, V. (2010). Dirty hands: Bacteria of faecal origin on commuters' hands. *Epidemiology & Infection*, 138(3), 409–414.

<https://doi.org/10.1017/S0950268809990641>

Julian, T. R. (2016). Environmental transmission of diarrheal pathogens in low and middle income countries. *Environmental Science: Processes & Impacts*, 18(8), 944–955.

<https://doi.org/10.1039/C6EM00222F>

Julian, T. R., & Pickering, A. J. (2015). A Pilot Study on Integrating Videography and Environmental Microbial Sampling to Model Fecal Bacterial Exposures in Peri-Urban Tanzania.

PLoS ONE, 10(8). <https://doi.org/10.1371/journal.pone.0136158>

Julian, T. R., Pickering, A. J., Leckie, J. O., & Boehm, A. B. (2013). Enterococcus spp on fomites and hands indicate increased risk of respiratory illness in child care centers. *American Journal of Infection Control*, 41(8), 728–733. <https://doi.org/10.1016/j.ajic.2012.10.013>

Kaltenthaler, E. C., Drasar, B. S., & Potter, C. W. (1996). The use of microbiology in the study of hygiene behaviour. *Microbios*, 88(354), 35–43.

Kaltenthaler, E. C., Elsworth, A. M., Schweiger, M. S., Mara, D. D., & Brauxholtz, D. A. (1995). Faecal contamination on children's hands and environmental surfaces in primary schools in Leeds. *Epidemiology & Infection*, 115(3), 527–534.

<https://doi.org/10.1017/S0950268800058696>

Kaltenthaler, E., & Pinfold, J. (1995). Microbiological methods for assessing handwashing practice in hygiene behaviour studies. *The Journal of Tropical Medicine and Hygiene*, 98, 101–106.

Kalter, H. D., Gilman, R. H., Moulton, L. H., Cullotta, A. R., Cabrera, L., & Velapatiño, B. (2010). Risk Factors for Antibiotic-Resistant *Escherichia coli* Carriage in Young Children in Peru: Community-Based Cross-Sectional Prevalence Study. *The American Journal of Tropical Medicine and Hygiene*, 82(5), 879–888. <https://doi.org/10.4269/ajtmh.2010.09-0143>

Kavitha, E., Srikumar, R., Muthu, G., & Sathyapriya, T. (2019). Bacteriological profile and perception on hand hygiene in school-going Children. *Journal of Laboratory Physicians*, 11(4), 300–304. https://doi.org/10.4103/JLP.JLP_113_18

<https://doi.org/10.1093/ajcn/31.11.2114> Kellogg, D. S., Rosenbaum, P. F., Kiska, D. L., Riddell, S. W., Welch, T. R., & Shaw, J. (2012). High fecal hand contamination among wilderness hikers. *American Journal of Infection Control*, 40(9), 893–895.

<https://doi.org/10.1016/j.ajic.2011.11.009>

Keswick, B. H., Pickering, L. K., DuPont, H. L., & Woodward, W. E. (1983). Survival and detection of rotaviruses on environmental surfaces in day care centers. *Applied and Environmental Microbiology*, 46(4), 813–816.

Kim, S., Brown, A. C., Murphy, J., Oremo, J., Owuor, M., Ouda, R., Person, B., & Quick, R. (2019). Evaluation of the impact of antimicrobial hand towels on hand contamination with

Escherichia coli among mothers in Kisumu County, Kenya, 2011–2012. *Water Research*, 157, 564–571. <https://doi.org/10.1016/j.watres.2019.03.085>

Kosek, M., Bern, C., & Guerrant, R. L. (2003). The global burden of diarrhoeal disease, as estimated from studies published between 1992 and 2000. *Bulletin of the World Health Organization*, 81(3), 197–204.

Kundu, A., Smith, W. A., Harvey, D., & Wuertz, S. (2018). Drinking Water Safety: Role of Hand Hygiene, Sanitation Facility, and Water System in Semi-Urban Areas of India. *The American Journal of Tropical Medicine and Hygiene*, 99(4), 889–898. <https://doi.org/10.4269/ajtmh.16-0819>

Kusuma, A., Eryando, T., & Susanna, D. (2012). *Escherichia coli* contamination of babies' food-serving utensils in a district of West Sumatra, Indonesia. *WHO South-East Asia Journal of Public Health*, 1(1), 20. <https://doi.org/10.4103/2224-3151.206910>

Kwakye-Nuako, G., Borketey, P., Mensah-Attipoe, I., Asmah, R., & Ayeh-Kumi, P. (2007). Sachet Drinking Water in Accra: The Potential Threats of Transmission of Enteric Pathogenic Protozoan Organisms. *Ghana Medical Journal*, 41(2), 62–67.

Kyriacou, A., Drakopoulou, S., Georgaki, I., Fountoulakis, M., Mitsou, E., Lasaridi, K. E., Manios, Y., & Manios, T. (2009). Screening for faecal contamination in primary schools in Crete, Greece. *Child: Care, Health and Development*, 35(2), 159–163. <https://doi.org/10.1111/j.1365-2214.2008.00911.x>

Laborde, D. J., Weigle, K. A., Weber, D. J., & Kotch, J. B. (1993). Effect of fecal contamination on diarrheal illness rates in day-care centers. *American Journal of Epidemiology*, 138(4), 243–255. <https://doi.org/10.1093/oxfordjournals.aje.a116853>

Lee, M.-S., Hong, S. J., & Kim, Y.-T. (2015). Handwashing with soap and national handwashing projects in Korea: Focus on the National Handwashing Survey, 2006-2014. *Epidemiology and Health*, 37. <https://doi.org/10.4178/epih/e2015039>

Li, Y., Fraser, A., Chen, X., Cates, S., Wohlgenant, K., & Jaykus, L.-A. (2014). Microbiological analysis of environmental samples collected from childcare facilities in North and South Carolina. *American Journal of Infection Control*, 42(10), 1049–1055.

<https://doi.org/10.1016/j.ajic.2014.06.030>

Luby, S. P., Agboatwalla, M., Billhimer, W., & Hoekstra, R. M. (2007). Field trial of a low cost method to evaluate hand cleanliness. *Tropical Medicine & International Health*, 12(6), 765–771.

<https://doi.org/10.1111/j.1365-3156.2007.01847.x>

Martínez Bastidas, T., Campo, N. C., Mena, K. D., Campo, N. C., León Félix, J., Gerba, C. P., & Chaidez, C. (2014). Detection of pathogenic micro-organisms on children's hands and toys during play. *Journal of Applied Microbiology*, 116(6), 1668–1675.

<https://doi.org/10.1111/jam.12473>

Mattioli, M. C., Boehm, A. B., Davis, J., Harris, A. R., Mrisho, M., & Pickering, A. J. (2014). Enteric Pathogens in Stored Drinking Water and on Caregiver's Hands in Tanzanian Households with and without Reported Cases of Child Diarrhea. *PLoS ONE*, 9(1), e84939–e84939.

<https://doi.org/10.1371/journal.pone.0084939>

Mattioli, M. C. M., Davis, J., & Boehm, A. B. (2015). Hand-to-Mouth Contacts Result in Greater Ingestion of Feces than Dietary Water Consumption in Tanzania: A Quantitative Fecal Exposure Assessment Model. *Environmental Science & Technology*, 49(3), 1912–1920.

<https://doi.org/10.1021/es505555f>

Mattioli, M. C. M., Davis, J., Mrisho, M., & Boehm, A. B. (2015). Quantification of Human Norovirus GII on Hands of Mothers with Children under the Age of Five Years in Bagamoyo,

Tanzania. *The American Journal of Tropical Medicine and Hygiene*, 93(3), 478–484.

<https://doi.org/10.4269/ajtmh.14-0778>

Mattioli, M. C., Pickering, A. J., Gilsdorf, R. J., Davis, J., & Boehm, A. B. (2013). Hands and water as vectors of diarrheal pathogens in Bagamoyo, Tanzania. *Environmental Science & Technology*, 47(1), 355–363. <https://doi.org/10.1021/es303878d>

Mbouthieu Teumta, G. M., Niba, L. L., Ncheuveu, N. T., Ghumbemsitia, M.-T., Itor, P. O. B., Chongwain, P., & Navti, L. K. (2019). An Institution-Based Assessment of Students' Hand Washing Behavior. *BioMed Research International*, 2019, e7178645.

<https://doi.org/10.1155/2019/7178645>

Motarjemi, Y., Käferstein, F., Moy, G., & Quevedo, F. (1993). Contaminated weaning food: A major risk factor for diarrhoea and associated malnutrition. *Bulletin of the World Health Organization*, 71(1), 79–92.

Nadimpalli, M. L., Marks, S. J., Montealegre, M. C., Gilman, R. H., Pajuelo, M. J., Saito, M., Tsukayama, P., Njenga, S. M., Kiiru, J., Swarthout, J., Islam, M. A., Julian, T. R., & Pickering, A. J. (2020). Urban informal settlements as hotspots of antimicrobial resistance and the need to curb environmental transmission. *Nature Microbiology*, 5(6), 787–795.

<https://doi.org/10.1038/s41564-020-0722-0>

Nagel Gravning, G. E., Røtterud, O.-J., Bjørkøy, S., Forseth, M., Skjerve, E., Llarena, A.-K., Lian, A., Johannessen, G. S., & Hauge, S. J. (2021). Comparison of four sampling methods for microbiological quantification on broiler carcasses. *Food Control*, 121, 107589.

<https://doi.org/10.1016/j.foodcont.2020.107589>

Naghavi, M., Abajobir, A. A., Abbafati, C., Abbas, K. M., Abd-Allah, F., Abera, S. F., Aboyans, V., Adetokunboh, O., Afshin, A., Agrawal, A., Ahmadi, A., Ahmed, M. B., Aichour, A. N., Aichour, M. T. E., Aichour, I., Aiyar, S., Alahdab, F., Al-Aly, Z., Alam, K., ... Murray, C. J. L. (2017). Global, regional, and national age-sex specific mortality for 264 causes of death, 1980–

2016: A systematic analysis for the Global Burden of Disease Study 2016. *The Lancet*, 390(10100), 1151–1210. [https://doi.org/10.1016/S0140-6736\(17\)32152-9](https://doi.org/10.1016/S0140-6736(17)32152-9)

Navab-Daneshmand, T., Friedrich, M. N. D., Gächter, M., Montealegre, M. C., Mlambo, L. S., Nhwatiwa, T., Mosler, H.-J., & Julian, T. R. (2018). Escherichia coli Contamination across Multiple Environmental Compartments (Soil, Hands, Drinking Water, and Handwashing Water) in Urban Harare: Correlations and Risk Factors. *The American Journal of Tropical Medicine and Hygiene*, 98(3), 803–813. <https://doi.org/10.4269/ajtmh.17-0521>

Ngure, F. M., Humphrey, J. H., Mbuya, M. N. N., Majo, F., Mutasa, K., Govha, M., Mazarura, E., Chasekwa, B., Prendergast, A. J., Curtis, V., Boor, K. J., & Stoltzfus, R. J. (2013). Formative research on hygiene behaviors and geophagy among infants and young children and implications of exposure to fecal bacteria. *The American Journal of Tropical Medicine and Hygiene*, 89(4), 709–716. <https://doi.org/10.4269/ajtmh.12-0568>

Nguyen, K. H., Operario, D. J., Nyathi, M. E., Hill, C. L., Smith, J. A., Guerrant, R. L., Samie, A., Dillingham, R. A., Bessong, P. O., & Rogawski McQuade, E. T. (2021). Seasonality of drinking water sources and the impact of drinking water source on enteric infections among children in Limpopo, South Africa. *International Journal of Hygiene and Environmental Health*, 231, 113640. <https://doi.org/10.1016/j.ijheh.2020.113640>

Noble, R. T., Weisberg, S. B., Leecaster, M. K., McGee, C. D., Ritter, K., Walker, K. O., & Vainik, P. M. (2003). Comparison of beach bacterial water quality indicator measurement methods. *Environmental Monitoring and Assessment*, 81(1–3), 301–312. Scopus. <https://doi.org/10.1023/A:1021397529041>

Odagiri, M., Schriewer, A., Daniels, M. E., Wuertz, S., Smith, W. A., Clasen, T., Schmidt, W.-P., Jin, Y., Torondel, B., Misra, P. R., Panigrahi, P., & Jenkins, M. W. (2016). Human fecal and pathogen exposure pathways in rural Indian villages and the effect of increased latrine coverage. *Water Research*, 100, 232–244. <https://doi.org/10.1016/j.watres.2016.05.015>

Oristo, S., Rönqvist, M., Aho, M., Sovijärvi, A., Hannila-Handelberg, T., Hörman, A., Nikkari, S., Kinnunen, P. M., & Maunula, L. (2017). Contamination by Norovirus and Adenovirus on Environmental Surfaces and in Hands of Conscripts in Two Finnish Garrisons. *Food and Environmental Virology*, 9(1), 62–71. <https://doi.org/10.1007/s12560-016-9262-4>

Otsuka, Y., Agestika, L., Harada, H., Sriwuryandari, L., Sintawardani, N., & Yamauchi, T. (2019). Comprehensive assessment of handwashing and faecal contamination among elementary school children in an urban slum of Indonesia. *Tropical Medicine & International Health*, 24(8), 954–961. <https://doi.org/10.1111/tmi.13279>

Padaruth, S. K., & Biranjia-Hurdoyal, S. D. (2015). Hygiene practices and faecal contamination of the hands of children attending primary school in Mauritius. *International Health*, 7(4), 280–284. <https://doi.org/10.1093/inthealth/ihu080>

Park, G. W., Ng, T. F. F., Freeland, A. L., Marconi, V. C., Boom, J. A., Staat, M. A., Montmayer, A. M., Browne, H., Narayanan, J., Payne, D. C., Cardemil, C. V., Treffiletti, A., & Vinjé, J. (2020). CrAssphage as a Novel Tool to Detect Human Fecal Contamination on Environmental Surfaces and Hands. *Emerging Infectious Diseases*, 26(8), 1731–1739. <https://doi.org/10.3201/eid2608.200346>

Penakalapati, G., Swarthout, J., Delahoy, M. J., McAliley, L., Wodnik, B., Levy, K., & Freeman, M. C. (2017). Exposure to Animal Feces and Human Health: A Systematic Review and Proposed Research Priorities. *Environmental Science & Technology*, 51(20), 11537–11552. <https://doi.org/10.1021/acs.est.7b02811>

Petersen, N. J., & Bressler, G. K. (1986). Design and modification of the day care environment. *Reviews of Infectious Diseases*, 8(4), 618–621. <https://doi.org/10.1093/clinids/8.4.618>

Pickering, A. J., Boehm, A. B., Mwanjali, M., & Davis, J. (2010). Efficacy of Waterless Hand Hygiene Compared with Handwashing with Soap: A Field Study in Dar es Salaam, Tanzania.

The American Journal of Tropical Medicine and Hygiene, 82(2), 270–278.

<https://doi.org/10.4269/ajtmh.2010.09-0220>

Pickering, A. J., Davis, J., Walters, S. P., Horak, H. M., Keymer, D. P., Mushi, D., Strickfaden, R., Chynoweth, J. S., Liu, J., Blum, A., Rogers, K., & Boehm, A. B. (2010a). Hands, Water, and Health: Fecal Contamination in Tanzanian Communities with Improved, Non-Networked Water Supplies. *Environmental Science & Technology*, 44(9), 3267–3272.

<https://doi.org/10.1021/es903524m>

Pickering, A. J., Davis, J., Walters, S. P., Horak, H. M., Keymer, D. P., Mushi, D., Strickfaden, R., Chynoweth, J. S., Liu, J., Blum, A., Rogers, K., & Boehm, A. B. (2010b). Hands, Water, and Health: Fecal Contamination in Tanzanian Communities with Improved, Non-Networked Water Supplies. *Environmental Science & Technology*, 44(9), 3267–3272.

<https://doi.org/10.1021/es903524m>

Pickering, A. J., Ercumen, A., Arnold, B. F., Kwong, L. H., Parvez, S. M., Alam, M., Sen, D., Islam, S., Kullmann, C., Chase, C., Ahmed, R., Unicomb, L., Colford, J. M., & Luby, S. P. (2018). Fecal Indicator Bacteria along Multiple Environmental Transmission Pathways (Water, Hands, Food, Soil, Flies) and Subsequent Child Diarrhea in Rural Bangladesh. *Environmental Science & Technology*, 52(14), 7928–7936. <https://doi.org/10.1021/acs.est.8b00928>

Pickering, A. J., Julian, T. R., Mamuya, S., Boehm, A. B., & Davis, J. (2011). Bacterial hand contamination among Tanzanian mothers varies temporally and following household activities. *Tropical Medicine & International Health: TM & IH*, 16(2), 233–239.

<https://doi.org/10.1111/j.1365-3156.2010.02677.x>

Pinfold, J. V. (1990). Faecal contamination of water and fingertip-rinses as a method for evaluating the effect of low-cost water supply and sanitation activities on faeco-oral disease transmission. I. A case study in rural north-east Thailand. *Epidemiology & Infection*, 105(2), 363–375. <https://doi.org/10.1017/S0950268800047956>

PRISMA-P-checklist.pdf. (n.d.). Retrieved December 30, 2020, from <http://www.prisma-statement.org/documents/PRISMA-P-checklist.pdf>

Ram, P., Jahid, I., Halder, A., Nygren, B., Islam, S., Granger, S., Molyneaux, J., & Luby, S. (2011). Variability in Hand Contamination Based on Serial Measurements: Implications for Assessment of Hand-Cleansing Behavior and Disease Risk. *The American Journal of Tropical Medicine and Hygiene*, 84, 510–516. <https://doi.org/10.4269/ajtmh.2011.10-0299>

Reddi, S. G. D. N., Naveen Kumar, R., SubbaRao, G. M., Vishnu Vardhana Rao, M., & Sudershan, R. V. (2016). Bacteriological quality of drinking water at point of use and hand hygiene of primary food preparers: Implications for household food safety. *Journal of Water, Sanitation and Hygiene for Development*, 6(2), 224–230. <https://doi.org/10.2166/washdev.2016.184>

Rothstein, J. D., Mendoza, A. L., Cabrera, L. Z., Pachas, J., Calderón, M., Pajuelo, M. J., Caulfield, L. E., Winch, P. J., & Gilman, R. H. (2019). Household Contamination of Baby Bottles and Opportunities to Improve Bottle Hygiene in Peri-Urban Lima, Peru. *The American Journal of Tropical Medicine and Hygiene*, 100(4), 988–997. <https://doi.org/10.4269/ajtmh.18-0301>

Saboori, S., Greene, L. E., Moe, C. L., Freeman, M. C., Caruso, B. A., Akoko, D., & Rheingans, R. D. (2013). Impact of regular soap provision to primary schools on hand washing and *E. coli* hand contamination among pupils in Nyanza Province, Kenya: A cluster-randomized trial. *The American Journal of Tropical Medicine and Hygiene*, 89(4), 698–708. <https://doi.org/10.4269/ajtmh.12-0387>

Schriewer, A., Odagiri, M., Wuertz, S., Misra, P. R., Panigrahi, P., Clasen, T., & Jenkins, M. W. (2015). Human and Animal Fecal Contamination of Community Water Sources, Stored Drinking Water and Hands in Rural India Measured with Validated Microbial Source Tracking Assays. *The American Journal of Tropical Medicine and Hygiene*, 93(3), 509–516. <https://doi.org/10.4269/ajtmh.14-0824>

Society, N. G. (2019, October 24). *Köppen Climate Classification System*. National Geographic Society. <http://www.nationalgeographic.org/encyclopedia/koppen-climate-classification-system/>

Steinbaum, L., Swarthout, J., Mboya, J., & Pickering, A. J. (2017). Following the Worms: Detection of Soil-Transmitted Helminth Eggs on Mothers' Hands and Household Produce in Rural Kenya. *The American Journal of Tropical Medicine and Hygiene*, 97(5), 1616–1618. <https://doi.org/10.4269/ajtmh.17-0072>

Troeger, C., Blacker, B. F., Khalil, I. A., Rao, P. C., Cao, S., Zimsen, S. R., Albertson, S. B., Stanaway, J. D., Deshpande, A., Abebe, Z., Alvis-Guzman, N., Amare, A. T., Asgedom, S. W., Anteneh, Z. A., Antonio, C. A. T., Aremu, O., Asfaw, E. T., Atey, T. M., Atique, S., ... Reiner, R. C. (2018). Estimates of the global, regional, and national morbidity, mortality, and aetiologies of diarrhoea in 195 countries: A systematic analysis for the Global Burden of Disease Study 2016. *The Lancet Infectious Diseases*, 18(11), 1211–1228. [https://doi.org/10.1016/S1473-3099\(18\)30362-1](https://doi.org/10.1016/S1473-3099(18)30362-1)

Tsai, K., Simiyu, S., Mumma, J., Aseyo, R. E., Cumming, O., Dreifelbis, R., & Baker, K. K. (2019). Enteric Pathogen Diversity in Infant Foods in Low-Income Neighborhoods of Kisumu, Kenya. *International Journal of Environmental Research and Public Health*, 16(3). <https://doi.org/10.3390/ijerph16030506>

Ubheeram, J., & Biranjia-Hurdoyal, S. D. (2017). Effectiveness of hand hygiene education among a random sample of women from the community. *Journal of Preventive Medicine and Hygiene*, 58(1), E53–E55.

UN-Water. (n.d.). Urbanization. *UN-Water*. Retrieved November 13, 2020, from <https://www.unwater.org/water-facts/urbanization/>

Urban and Rural Disparities Remain Despite Progress in Closing Health and Development Gaps – Population Reference Bureau. (n.d.). Retrieved November 11, 2020, from <https://www.prb.org/urban-rural-datasheet/>

Vally, H., Glass, K., Ford, L., Hall, G., Kirk, M. D., Shadbolt, C., Veitch, M., Fullerton, K. E., Musto, J., & Becker, N. (2014). Proportion of Illness Acquired by Foodborne Transmission for Nine Enteric Pathogens in Australia: An Expert Elicitation. *Foodborne Pathogens and Disease*, 11(9), 727–733. <https://doi.org/10.1089/fpd.2014.1746>

Van, R., Marrow, A. L., Reves, R. R., & Pickering, L. K. (1991). Environmental Contamination in Child Day-Care Centers. *American Journal of Epidemiology*, 133(5), 460–470. <https://doi.org/10.1093/oxfordjournals.aje.a115913>

Van, R., Wun, C.-C., Morrow, A. L., & Pickering, L. K. (1991). The Effect of Diaper Type and Overclothing on Fecal Contamination in Day-care Centers. *JAMA*, 265(14), 1840–1844. <https://doi.org/10.1001/jama.1991.03460140068028>

Viechtbauer, W. (2010). Conducting Meta-Analyses in R with the metafor Package. *Journal of Statistical Software*, 36(3), 1-48. <https://doi.org/10.18637/jss.v036.i03>

Vila-Guilera, J., Ciric, L., Parikh, P., Dasgupta, R., & Lakhanpaul, M. (2021). 120 Comparing faecal transmission pathways contributing to enteric infections in infants in rural India. *BMJ Paediatrics Open*, 5(Suppl 1). <https://doi.org/10.1136/bmjpo-2021-RCPCH.69>

VISHWANATH, R., SELVABAI, A. P., & SHANMUGAM, P. (2019). Detection of bacterial pathogens in the hands of rural school children across different age groups and emphasizing the importance of hand wash. *Journal of Preventive Medicine and Hygiene*, 60(2), E103–E108. <https://doi.org/10.15167/2421-4248/jpmh2019.60.2.1186>

Vos, T., Lim, S. S., Abbafati, C., Abbas, K. M., Abbasi, M., Abbasifard, M., Abbasi-Kangevari, M., Abbastabar, H., Abd-Allah, F., Abdelalim, A., Abdollahi, M., Abdollahpour, I., Abolhassani,

H., Aboyans, V., Abrams, E. M., Abreu, L. G., Abrigo, M. R. M., Abu-Raddad, L. J., Abushouk, A. I., ... Murray, C. J. L. (2020). Global burden of 369 diseases and injuries in 204 countries and territories, 1990–2019: A systematic analysis for the Global Burden of Disease Study 2019. *The Lancet*, 396(10258), 1204–1222. [https://doi.org/10.1016/S0140-6736\(20\)30925-9](https://doi.org/10.1016/S0140-6736(20)30925-9)

Wagner, E. G., & Lanoix, J. N. (1958). Excreta disposal for rural areas and small communities. Monograph Series. World Health Organization, 39, 1–182.

Walker, C. L. F., Rudan, I., Liu, L., Nair, H., Theodoratou, E., Bhutta, Z. A., O'Brien, K. L., Campbell, H., & Black, R. E. (2013). Global burden of childhood pneumonia and diarrhoea. *The Lancet*, 381(9875), 1405–1416. [https://doi.org/10.1016/S0140-6736\(13\)60222-6](https://doi.org/10.1016/S0140-6736(13)60222-6)

Wang, Y., Moe, C. L., Null, C., Raj, S. J., Baker, K. K., Robb, K. A., Yakubu, H., Ampofo, J. A., Wellington, N., Freeman, M. C., Armah, G., Reese, H. E., Peprah, D., & Teunis, P. F. M. (2017). Multipathway Quantitative Assessment of Exposure to Fecal Contamination for Young Children in Low-Income Urban Environments in Accra, Ghana: The SaniPath Analytical Approach. *The American Journal of Tropical Medicine and Hygiene*, 97(4), 1009–1019. <https://doi.org/10.4269/ajtmh.16-0408>

The World Bank Group. (n.d.). World Bank Country and Lending Groups – World Bank Data Help Desk. Retrieved November 5, 2020, from <https://datahelpdesk.worldbank.org/knowledgebase/articles/906519>

Zhang, Q. Q., Ye, K. P., Xu, X. L., Zhou, G. H., & Cao, J. X. (2012). Comparison of Excision, Swabbing and Rinsing Sampling Methods to Determine the Microbiological Quality of Broiler Carcasses. *Journal of Food Safety*, 32(1), 134–139. <https://doi.org/10.1111/j.1745-4565.2011.00360.x>

Zhang, Y. (2006). Urban□Rural Literacy Gaps in Sub□Saharan Africa: The Roles of Socioeconomic Status and School Quality. *Comparative Education Review*, 50(4), 581–602.
<https://doi.org/10.1086/507056>