

## **Data-driven assessment of adolescents' mental health during the COVID-19 pandemic**

Yonatan Bilu PhD<sup>1</sup>, Natalie Flaks-Manov PhD<sup>1</sup>, Maytal Bivas-Benita PhD<sup>1</sup>, Pinchas Akiva PhD<sup>1</sup>,  
Nir Kalkstein B.Sc.<sup>1</sup>, Yoav Yehezkelli MD<sup>1,2</sup>, Miri Mizrahi-Reuveni MD<sup>2</sup>, Anat Ekka-Zohar PhD<sup>2</sup>,  
Shirley Shapiro Ben David MD<sup>2</sup>, Uri Lerner PhD<sup>2</sup>, Gilad Bodenheimer MD<sup>2</sup> and Shira  
Greenfeld MD<sup>2</sup>

<sup>1</sup> KI Research Institute, Kfar-Malal, Israel

<sup>2</sup> Maccabi Healthcare Services, Tel-Aviv, Israel

Corresponding author:

Natalie Flaks-Manov, KI Research Institute, 11 Hazayit st, Kfar Malal, Israel.

Email: [Natalie@kinstitute.org.il](mailto:Natalie@kinstitute.org.il)

## **Key Points**

### **Question**

Has the COVID-19 pandemic and the strategies to contain it affected adolescents' mental health?

### **Findings**

In this retrospective cohort study of over 200,000 adolescents 12–17 years old, the incidence rates of several measured mental health diagnoses and psychiatric medications increased significantly during the COVID-19 pandemic compared to the period before. This increase was mostly attributed to females.

### **Meaning**

This real-world study highlights the deterioration of adolescents' mental health during the COVID-19 pandemic and suggests that the mental health of this young population should be considered during management and health policy decision making.

## **Abstract**

### **Importance**

Adolescents' mental health and well-being were severely compromised during the COVID-19 pandemic. Longitudinal follow-up studies, based on real-world data, assessing the changes in mental health of adolescents during the later phase of the COVID-19 pandemic are needed.

### **Objective**

To quantify the effect of COVID-19 on the incidence of Israeli adolescents' mental health outcomes from electronic health record (EHR) data.

### **Design, Setting and Participants**

Retrospective cohort study analyzing EHR data of Maccabi Healthcare Services members, the second largest Health Maintenance Organization in Israel. Eligible subjects were 12-17 years old, during 2017-2021 with no previous diagnosis or psychiatric drug dispensation of those analyzed in this study. This resulted in over 200,000 eligible participants each year.

### **Exposure**

COVID-19 pandemic and the measures taken to mitigate it.

### **Main Outcomes and Measures**

Incidence rates of mental health diagnoses (depression; anxiety; obsessive-compulsive disorder; stress; eating disorders; ADHD), and psychiatric drugs dispensation (antidepressants; anxiolytics; antipsychotics; ADHD agents) were measured, and relative risks were computed between the years. Subgroup analyses were performed for age, gender, population sector and socioeconomic status. Interrupted time series (ITS) analysis evaluated changes in monthly incidence rates of psychiatric outcomes.

### **Results**

During the COVID-19 period a 36% increase was observed in the incidence of depression (95%CI: 25-47), 31% in anxiety (95%CI: 23-39), 20% in stress (95%CI: 13-27), 50% in eating disorders (95%CI: 35-67), 25% in antidepressants (95%CI: 25-33) and 28% in antipsychotics dispensation (95%CI: 18-40). Decreased rate of 26% (95% CI: 0.80-0.88) was observed in ADHD diagnoses and 10% (95% CI: 0.86-0.93) in prescriptions of ADHD agents. The increase was mostly attributed to females in the general Israeli population; nevertheless, a 24% increase in anxiety was seen in males (95%CI: 13-37), 64% in Israeli Arabs (95%CI: 12-140) and 31% in ultra-orthodox (95%CI: 3-67). ITS analysis revealed a significantly higher growth in the incidence of psychiatric outcomes during the COVID-19 period, compared to previous years.

### **Conclusions and Relevance**

EHR data of adolescents shows increased incidence rates of mental health diagnoses and medications during the COVID-19 pandemic, specifically identified females as those with the highest mental health burden. Our study highlights that the deteriorating mental health of children should be considered by decision-makers when actions and policies are put in place entering the third year of the pandemic.

## Introduction

The COVID-19 pandemic and measures taken to control its spread have transformed the lives of adolescents, raising concern for their mental health. Although children and adolescents mostly present a milder course of COVID-19 compared to adults<sup>1,2</sup> their mental health and wellbeing were negatively impacted during the pandemic<sup>3</sup>. Current reports have indicated that depression, anxiety and eating disorders have increased significantly since the outbreak of COVID-19 and higher prevalence rates were measured among females<sup>4-6</sup>, increasing gradually with age<sup>7</sup>. However, the information regarding the increase in mental health of adolescents during COVID-19 is still limited and is not based on longitudinal follow-up of real-world data population studies. Most of the present studies are based on survey data collected during the early phase of the COVID-19 outbreak. Quantitative study designs, based on real-world data, are needed to assess the changes in mental health of children and adolescents during the COVID-19 pandemic more accurately and compare it to previous years<sup>7</sup>.

The disruption caused by the pandemic was further exacerbated by the steps that were taken to mitigate it, such as three full lockdowns, social distancing policies and quarantine instructions for those exposed and infected by the SARS-CoV-2 virus. The disruption to the education system affected about 1.8 million students despite significant efforts to deploy distance learning. Previous studies have shown that whenever children are not in their educational routine, they become physically less active, their screen time is much prolonged, they have irregular sleep schedules and their diets are less healthy<sup>8,9</sup>. Furthermore, pandemic stressors such as the threat of the disease, decreased peer interactions, lack of personal space at home, and family's financial loss may have even more troublesome and enduring impacts on children's mental health<sup>8</sup>. In this study we quantified

the effect of COVID-19 on the incidence of Israeli youth mental health outcomes based on comprehensive EHR data.

## **Methods**

### STUDY POPULATION AND DESIGN

Data in this study originated from Maccabi Healthcare Services (MHS), the second largest Health Maintenance Organization (HMO) in Israel, which includes 2.5 million insured citizens with longitudinal EHR dated back to 1993. We performed a retrospective cohort study design of adolescents, 12-17 years old (up to their 18<sup>th</sup> birthday) between November 1<sup>st</sup>, 2016, and October 31<sup>st</sup>, 2021.

### OUTCOMES

We examined incidence rates of several outcomes associated with mental distress. These included five categories of mental health diagnoses: depression (ICD10 F32, F34); anxiety and obsessive-compulsive disorder disorders (ICD10 F41, F42); adjustment and emotional problems, stress-related conditions (ICD10 F43, F93; henceforth denoted as “stress”), eating disorders (ICD10 F50) and attention deficit hyperactivity disorder (ADHD) (ICD10 F90).

Furthermore, we assessed four categories of drugs dispensed during those years – antidepressants (ATC code N06A), anxiolytics (ATC code N05B), antipsychotics (ATC code N05A) and psychostimulants, agents used for ADHD and nootropics (ATC code N06B; henceforth denoted as “ADHD agents”). These diagnoses and prescriptions were given by physicians of various specializations (Figure S7).

### DEMOGRAPHIC VARIABLES

We examined trends in mental illness stratified by age sub-groups (12-13, 14-15, 16-17 years old), sex assigned at birth (male, female), sector (general Israeli population, Israeli-Arab, and Ultra-Orthodox Jewish) and socioeconomic status on a scale from 1 to 10 (SES;

low 1-3, medium 4-7 and high 8-10). SES and population sectors were determined by the participant's geo-statistical area of residence using *Points Location Services LTD* (POINTS), which integrates information from the Israeli Central Bureau of Statistics with other socio-economic and demographic data sources<sup>10</sup>. The Israeli Ministry of Health and all four health maintenance organizations use the POINTS data to explore SES and sectors routinely. Individuals with missing sector information (less than 0.01%) and unlisted SES were excluded from the SES sub-analysis (1.1%) but were included in all other analyses. Sex and age were listed for all members.

#### STATISTICAL ANALYSIS

Incidence was computed by considering the cohort of all MHS' members 12-17 years old at the beginning of the year, who did not previously receive a diagnosis, or a medication of the type being considered. The number of members who received the measured diagnosis or medication during the year was counted and normalized by the size of the cohort. Relative Risks (RRs) per 1,000 members and associated 95% confidence intervals (CIs) and p-values were computed to measure the changes and their significance in mental illness trends between each following year and between two time periods: pre-COVID-19 (year 2019 vs 2017) and during COVID-19 (year 2021 vs 2019). Since our data extended up to Oct 31<sup>st</sup>, 2021, each analyzed year started on Nov 1<sup>st</sup> of the previous year and ended on Oct 31<sup>st</sup>. To present the results of the RRs and 95% CIs we used forest plots.

We used an interrupted time series design (ITS)<sup>11</sup> to quantify changes in the level and growth in monthly incident rates before and during the COVID-19 pandemic. The interruption was defined on Feb. 27<sup>th</sup>, 2020, the day the first case of COVID-19 was detected in Israel. We used linear regression models and included Fourier terms to model the seasonal factors, with P value <.05 considered statistically significant. Fourier analysis

resolves the time dimension variable and allows to identify, quantify, and remove the time-based cycles in the data<sup>12</sup>. Statistical analyses were conducted using Python version 3.7.1 and the statsmodels package version 0.12.

### **Ethics declarations**

The study protocol was approved by Maccabi Health Services' institutional review board (MH6-0006-21), and informed consent was waived. The study included retrospective, de-identified data therefore, presented minimal risk and did not adversely affect the rights and welfare of the subjects.

### **Results**

We evaluated EHR data of 12–17 years old adolescents to assess mental health outcomes before and during the pandemic. For each outcome measured we excluded those with a history of that specific outcome, therefore, the population numbers differed between outcomes. We measured average population sizes of 200,824 in 2017, 207,703 in 2019 and 218,146 in 2021 and this population consisted of 50.4% males on average. The demographic share of the general Israeli population in this cohort was 79.8%, the community of ultra-orthodox Jews was 12.5%, and 7.7% were Israeli Arabs (Table 1). Diagnoses and medication incidence rates for mental health increased over time, however the rise was higher during the COVID-19 period than the pre-COVID-19 period. Overall, the incidence rates of depression increased by 36%, anxiety by 31%, eating disorders by 50% and stress by 20% from 2019 and 2021 (eTable 1).

First, we explored the yearly outlook of all the outcomes tested by plotting the monthly incidence rates of an outcome per 1,000 members for each year from 2017 to 2021. In the beginning of the COVID-19 pandemic (March-April 2020), we observed a drastic



decrease in the rates of all diagnoses and medications, corresponding to the first, and strictest, lockdown. However, from May 2020 rates of most diagnoses and medications increased and were high throughout 2021 compared to the years before the pandemic (Figure 1). As the year 2020 included a pre-pandemic period in the beginning of the year, followed by the COVID-19 outbreak in March, a period where access to mental health services was severely disrupted, we analyzed 2021 as the COVID-19 period and 2019 as the pre-pandemic period. To quantify the effect of the COVID-19 period on the mental health of adolescents, we compared the relative risk of incidence in the pre-COVID-19 period (2019 vs 2017) and during the COVID-19 period (2021 vs 2019) (eTable1; Figure 2). The analysis of the COVID-19 period presented a sharp rise in mental health outcomes such as 36% increase in depression (RR=1.36; 95%CI: 1.25-1.47), 31% in anxiety (RR=1.31; 95% CI: 1.23-1.39), 20% in stress (RR=1.20; 95% CI: 1.13-1.27), 50% in eating disorders (RR=1.50; 95% CI: 1.35-1.67), 25% in antidepressants (RR=1.25; 95% CI: 1.25-1.33) and 28% in antipsychotics (RR=1.28; 95% CI: 1.18-1.40). We found a small, albeit statistically significant, decrease in the rate of ADHD diagnoses (RR=0.84; 95% CI: 0.80-0.88) and corresponding prescriptions of ADHD agents (RR=0.90; 95% CI: 0.86-0.93).

To better describe the specific populations who demonstrated the sharpest increase in incidence of mental health outcomes, we performed additional sub-analyses. In the gender-stratified analyses, most of the increase in incidence rates of psychiatric diagnoses and medications was associated with females, while males generally presented risk rates that were not significantly different from previous years (Figure 2a). While in the pre-COVID-19 period a significant increase among females was only measured in anxiety diagnosis (RR=1.15; 95% CI: 1.04-1.26) and antidepressants dispensation (RR=1.11; 95% CI: 1.01-1.21), during the COVID-19 period we observed significant increases in incidence rates of

depression (RR=1.61; 95% CI: 1.45-1.88), anxiety (RR=1.36; 95% CI: 1.25-1.48), stress (RR=1.27; 95% CI: 1.18-1.37), eating disorders (RR=1.59; 95% CI: 1.41-1.79), antidepressants (RR=1.40; 95% CI: 1.3-1.51) and antipsychotics (RR=1.66; 95% CI: 1.47-1.80). The only significant increase measured in males during COVID-19 period was 24% in anxiety (RR=1.24; 95% CI: 1.13-1.37).

Next, we performed a narrower age stratification to evaluate whether a more specific age group was associated with the increase in psychiatric diagnoses or drug dispensation. Age-group analyses have shown a significant increase during COVID-19 period in diagnoses of depression, anxiety, stress and eating disorders among all the groups, with the highest increase observed in the age group of 14-15 years old (Figure 2b). This group presented significant increases in diagnoses of depression (RR=1.49; 95% CI: 1.130 – 1.72), anxiety (RR=1.38; 95% CI: 1.23-1.54), stress (RR=1.29; 95% CI: 1.17-1.42) and eating disorders (RR=1.60; 95% CI: 1.35-1.90). Furthermore, the incidence rates of antidepressants and antipsychotics dispensation had the most pronounced increase among the same age group (RR=1.32; 95% CI: 1.20-1.46 and RR=1.38; 95% CI: 1.19-1.59 respectively).

The Israeli society is composed of different sectors that usually present considerable disparities between them, therefore we sub-analyzed the effect of the COVID-19 period on mental health outcomes of adolescents in the different sectors. The sector-stratified analyses showed that most of the increase in the incidence rates of psychiatric diagnoses and medications dispensation was associated with the general Israeli population. A single significant increase was observed in the Israeli Arab and ultra-orthodox communities in anxiety diagnosis (Figure 2c). The incidence rates of anxiety in the ultra-orthodox community increased by 31% during the pandemic period (RR=1.31; 95% CI: 1.03-1.67) and among Israeli Arabs by 64% (RR=1.64; 95% CI: 1.12-2.40).

The effect of socioeconomic status (SES) on the increased incidence in mental health outcomes in adolescents during the COVID-19 period was also examined. Sub-group analysis by socioeconomic status (Figure 2d) was done by portioning the sample into three groups, low status representing about 12% of the sample, over 60% of the sample with medium status and high status at about 25% of the sample. The medium and high SES groups presented a more distinct change, showing significant incident increases in six outcomes: depression (RR=1.45 95% CI: 1.31-1.60; RR=1.19; 95% CI: 1.02-1.40 respectively), anxiety (RR=1.32 95% CI: 1.22-1.43; RR=1.23; 95% CI: 1.08-1.39), eating disorders (RR=1.49 95% CI: 1.30-1.69; RR=1.56; 95% CI: 1.28-1.90), stress (RR=1.18 95% CI: 1.11-1.27; RR=1.21; 95% CI: 1.07-1.37), antidepressants dispensation (RR=1.28; 95% CI: 1.20-1.38; RR=1.25; 95% CI: 1.12-1.39) and antipsychotics dispensation (RR=1.29; 95% CI: 1.17-1.43; RR=1.38; 95% CI: 1.16-1.64). In the low SES group, the increase was less visible, with only two significantly increased outcomes: anxiety (RR=1.49 95% CI: 1.16-1.92) and stress (RR=1.25 95% CI: 1.03-1.52). The decrease in ADHD agents was observed across all SES groups. Notably, we observed among the high SES group a significant increase in prescription of antidepressants (RR=1.16 95% CI: 1.03-1.32), and among medium SES group a significant increase in prescription of antipsychotics (RR=1.16 95% CI: 1.03-1.30) for the pre-pandemic period.

To enable a more refined analysis examining to what extent the trends during the COVID-19 era are a continuation of past trends and to what extent they break away from them, we performed Interrupted Time Series (ITS) analysis. We evaluated six different models for this analysis which differed in the time periods used to fit the data and the number of interruption points (Figures S1-S6). We observed that following a decline in incidence rates during the first lockdown (from mid-March to the end of April 2020), there was an increase in incidence rates of all diagnoses and medications dispensation, which was

significantly higher than the trend in previous years (Figure 3). Varying the analysis by introducing a “gap” period during this first lockdown period, and optionally also during the following month, so as not to be biased by the initial sharp decline, led to qualitatively comparable results (Figures S2-S5). Introducing a second interruption point on March 7<sup>th</sup>, 2021, the day all schools were opened following an extensive vaccination campaign, resulted in a significant decline following that point in the incidence of antidepressant and anxiolytic dispensation as well as of diagnoses of anxiety, stress and eating disorder (eFigure 6 and eTable 2).

## **Discussion**

The COVID-19 pandemic has taken a toll on the mental health and wellbeing of children and adolescents. While most recent studies used surveys to assess the status of mental health in adolescents<sup>7,13</sup>, we approached the issue from a quantitative perspective and compared new psychiatric diagnoses and drug dispensation in adolescents before and during the COVID-19 pandemic based on comprehensive EHR data. Consistent with studies showing a sharp increase in reports of mental health problems<sup>4,7,14</sup>, we observed a significant increase in diagnoses of depression, anxiety, stress and eating disorders during the COVID-19 period compared to previous years. These observations can be attributed to a wide range of stressors that appeared during the pandemic. The increase in depression, anxiety and stress might have been a result of fear of morbidity and mortality (to self or loved ones) from the new unknown illness, excessive media exposure with alarming content, continuous changes in guidelines and restrictions which led to prolonged social isolation, loss of peer interactions and support during school closures (eTable 3), reduced extracurricular and physical activity, disruption of daily routines, decreased hope for the future and loss of pleasure in activities<sup>15-17</sup>. The introduction of new distance learning

technologies imposed new challenges involving constant self-observation through cameras and different academic success evaluation, compromising adolescents' self-esteem. When Eating disorders are associated with body dissatisfaction, poor self-esteem and depression<sup>18</sup>, an illusion of control over the body may have been more readily triggered by the uncertainty of the new reality. While the increase in psychiatric drug dispensation was mostly aligned with the corresponding diagnoses, the increase in dispensation of antipsychotic drugs was not associated with any specific diagnosis measured in this study and was particularly pronounced in females, might indicate incidences of self-harm and personality disorders<sup>19</sup>. Among the reasons for increased incidence of psychiatric outcomes, we should also consider the extended time periods adolescents spent at home with their immediate family that may have promoted enhanced parental awareness and led to increased legitimacy to discuss mental distress during these times<sup>20</sup>.

While rates of depression and anxiety increased during the COVID-19 period in this study, we observed a reduction in the rates of ADHD diagnoses and prescription medications. As reports in recent years have shown an overall rise in ADHD diagnoses and medications<sup>21,22</sup>, one explanation of our findings might be that ADHD diagnoses and medication use are seasonal, with adherence levels reported to be higher during the school year than during school vacations<sup>23-26</sup>. Since the COVID-19 period was characterized by intermittent closure of schools, this observed reduction in diagnoses and drug use is in line with the seasonal decrease during a normal school year's summer break. Furthermore, lower attendance in classes reduced student numbers which may have created a better environment for those with concentration difficulties. This reality might have also increased teachers' tolerance to class absence, lack of task completion and behavioral problems, therefore less inclined to refer adolescents to ADHD evaluation. These findings may suggest

under-diagnosed and untreated ADHD in adolescents putting them at risk for more serious outcomes, such as increased rates of criminal activity, accidents as well as anxiety and depression<sup>27</sup>.

The most significant finding in this study is the greater risk of adolescent females diagnosed with a variety of mental disorders for the first time during the pandemic compared to the risk observed for males. In this EHR analysis, risk for anxiety was the only significant mental outcome that was increased among males. These findings are consistent with previous studies which suggested that loneliness was associated with elevated depression symptoms in females and with elevated social anxiety in males<sup>28,29</sup>. Other studies found both increased depressive and anxiety symptoms among females<sup>4-7</sup>. The World Health Organization (WHO) reported lower levels of mental health and life satisfaction among females compared to males<sup>30</sup>. Gender differences in mental disorders are known and consistent in the field of psychiatry, but the reasons for these differences are still not clear enough<sup>31</sup>. The potential risk factors could be the influence of sex hormones, higher rates of interpersonal stressors, females' lower baseline self-esteem and higher tendency for body shame, exposure to stress associated with lack of gender equality and discrimination and higher chance of experiencing interpersonal violence<sup>31-33</sup>. While this could imply that females are more sensitive to the effects of the pandemic, this can also be attributed to higher tendency of females sharing their mental distress with their parents or physicians and getting the diagnosis and treatment for their condition. The apparent lack of increase among males might be because they are more frequently referred to mental health services by their school following behavioral issues. As schools were closed intermittently during the analyzed period, potential increase due to the pandemic may have been offset by the decrease in school referrals<sup>29</sup>. Importantly, mental distress among male adolescents

may manifest in ways which are not directly reported in the EHR, such as violence, dropout, and substance abuse.

Stratifying by age, our findings show that there was an increase in mental illness in all age groups, more pronounced among 14-15-year-olds. Yet, as described in previous studies<sup>7</sup>, we found that the incidence rates themselves, of depression, anxiety, and the associated medication, are highest among 16–17-year-olds. High rates among older adolescents may be due to changes associated with puberty, a response to the stress of lockdowns and the global pandemic, and lack of socialization with peers which is particularly important at this age. In younger children increased anxiety and depression may be more readily attributed to changes in routine<sup>34,35</sup>. Comparing the sectors in the Israeli population showed that different circumstances and lifestyle during the COVID-19 period are associated with different mental health outcomes in adolescents. In the ultra-orthodox community, we observed a significant increase only in the diagnosis of anxiety (31%). Ultra-orthodox Jews, accounting for 12% of the Israeli population, form of a closely-knit religious communities, living by strict Jewish laws and tradition<sup>36</sup>. In this sector, the pandemic caused tension between governmental instructions and instructions from prominent community leaders who advocated keeping schools open for holy studies<sup>37,38</sup>. Many media venues such as TV, internet, and secular newspapers are not used in this sector, potentially buffering them from the exacerbating impact of reports and discussions in these venues. Moreover, while in recent years there is a growing openness and legitimacy for the discussion of mental health in this community, utilization of mental health services is still much lower than in the general Israeli population<sup>37,39</sup>. Similar to the Ultra-Orthodox sector, in the Israeli-Arab sector we observed a significant increase only in the diagnosis of anxiety (64%). This sector, which accounts for 20% of the total Israeli population, utilizes mental health services at a much

lower rate than the rest of the population, possibly due to lower access to healthcare services as many reside in peripheral areas, as well as negative cultural perception and stigma associated with mental health problems<sup>40,41</sup>.

A significant increase in mental health diagnoses during the COVID-19 pandemic period was observed across different SES. Differently from previous studies reporting that children and adolescents who grow up in families with lower SES have more symptoms of anxiety and depression<sup>42-44</sup>, the incidence rates of most diagnoses in this study increased with higher SES. Distinctly in Israel, the Israeli-Arab and ultra-orthodox communities are associated with lower SES<sup>37</sup> and as mentioned earlier, in these sectors the rates of diagnoses related to mental status are lower than the rest of the population for cultural, religious, and other reasons. Although lower SES is often associated with poor mental health, other mediators might affect this association. Social engagement with friends and family is linked to better mental health and affects the link between SES and mental health<sup>45</sup>. Ultra-orthodox communities in Israel are usually of lower SES, nevertheless they are socially active environments which provide members with social and spiritual support<sup>46</sup>. The community settings offer psychosocial engagement and continuous assistance which results in better health and mental health that would be expected based on their SES<sup>46,47</sup>.

Our study has several limitations. While the findings in this study are clear and consistent with other studies, the reported incidence rates are probably an underestimation of the actual numbers. Many adolescents are diagnosed and treated by mental health professionals in private clinics outside their HMO, and such diagnoses are not recorded in their EHR. Psychiatric drugs prescribed outside the HMO are also not recorded and were not included in this analysis. Furthermore, there is a long standby time for mental health services, starting at an average of three months before an initial assessment, and several



additional months before receiving treatment<sup>48</sup> - so not all those who seek and need help are included in this study. Our analysis addressed these limitations by comparing the risk ratios of the outcomes, measuring the difference in new mental health diagnoses and dispensation within the HMO in different time periods.

In this study, the rates of new cases of mental health diagnoses and drug dispensation were determined in individuals that had no history of the specific measured outcome. However, mental health often presents multiple comorbidities at different times in patients' history, i.e. depression may appear before anxiety diagnosis or anti-depressants dispensation. Future studies could explore how pre-COVID mental health diagnoses and prescriptions affected new mental health outcomes during the pandemic.

## **Conclusions**

To the best of our knowledge, this study is the first data-driven quantitative estimation of the mental health burden on adolescents during the COVID-19 pandemic. This observational cohort study showed a significant increase in mental health diagnoses and in psychiatric drugs dispensation during the COVID-19 period compared to the corresponding pre-COVID period. Our findings highlight the specific sub-populations which need to be considered when deciding on policies and promotion of adolescent resilience. These findings should warrant similar studies in other geographical areas and in other age groups. Strategies to address the deteriorating mental health of adolescents during the COVID-19 pandemic and prevent further deterioration as the disease continues to spread should be a priority.

## **Acknowledgments**

We thank Yossi Levi, Yair Goldberg and Stephen Levine for helpful comments and discussion on the Interrupted Time Series methodology. Chen Yanover and Tal El-Hai are acknowledged for their insightful methodological suggestions and illuminating discussions.

## References

1. Zimmermann, P. & Curtis, N. Why is COVID-19 less severe in children? A review of the proposed mechanisms underlying the age-related difference in severity of SARS-CoV-2 infections. *Archives of Disease in Childhood* **106**, 429–439 (2021).
2. Götzinger, F. *et al.* COVID-19 in children and adolescents in Europe: a multinational, multicentre cohort study. *The Lancet Child & Adolescent Health* **4**, 653–661 (2020).
3. Howard-Jones, A. R. *et al.* COVID-19 in children: I. Epidemiology, prevention and indirect impacts. *Journal of Paediatrics and Child Health* **n/a**,
4. Magson, N. R. *et al.* Risk and Protective Factors for Prospective Changes in Adolescent Mental Health during the COVID-19 Pandemic. *J Youth Adolescence* **50**, 44–57 (2021).
5. Meherali, S. *et al.* Mental Health of Children and Adolescents Amidst COVID-19 and Past Pandemics: A Rapid Systematic Review. *International Journal of Environmental Research and Public Health* **18**, 3432 (2021).
6. Thorisdottir, I. E. *et al.* Depressive symptoms, mental wellbeing, and substance use among adolescents before and during the COVID-19 pandemic in Iceland: a longitudinal, population-based study. *The Lancet Psychiatry* **8**, 663–672 (2021).
7. Racine, N. *et al.* Global Prevalence of Depressive and Anxiety Symptoms in Children and Adolescents During COVID-19: A Meta-analysis. *JAMA Pediatrics* (2021) doi:10.1001/jamapediatrics.2021.2482.

8. Brooks, S. K. *et al.* The psychological impact of quarantine and how to reduce it: rapid review of the evidence. *The Lancet* **395**, 912–920 (2020).
9. Wang, G., Zhang, Y., Zhao, J., Zhang, J. & Jiang, F. Mitigate the effects of home confinement on children during the COVID-19 outbreak. *Lancet* **395**, 945–947 (2020).
10. Hananel, R., Fishman, R. & Malovicki-Yaffe, N. Urban diversity and epidemic resilience: The case of the COVID-19. *Cities* **122**, 103526 (2022).
11. Bernal, J. L., Cummins, S. & Gasparrini, A. Corrigendum to: Interrupted time series regression for the evaluation of public health interventions: a tutorial. *Int J Epidemiol* **50**, 1045 (2020).
12. Fourier Analysis - an overview | ScienceDirect Topics.  
<https://www.sciencedirect.com/topics/neuroscience/fourier-analysis>.
13. Listerneck, Z. I. & Badawy, S. M. Mental Health Implications of the COVID-19 Pandemic Among Children and Adolescents: What Do We Know so Far? *PHMT Volume 12*, 543–549 (2021).
14. Cost, K. T. *et al.* Mostly worse, occasionally better: impact of COVID-19 pandemic on the mental health of Canadian children and adolescents. *Eur Child Adolesc Psychiatry* (2021) doi:10.1007/s00787-021-01744-3.
15. Fegert, J. M., Vitiello, B., Plener, P. L. & Clemens, V. Challenges and burden of the Coronavirus 2019 (COVID-19) pandemic for child and adolescent mental health: a narrative review to highlight clinical and research needs in the acute phase and the long return to normality. *Child Adolesc Psychiatry Ment Health* **14**, 20 (2020).
16. Camila Saggiaro de Figueiredo. COVID-19 pandemic impact on children and adolescents' mental health: Biological, environmental, and social factors. (2021).

17. Lee, J. Mental health effects of school closures during COVID-19. *The Lancet Child & Adolescent Health* **4**, 421 (2020).
18. Jebeile, H., Lister, N. B., Baur, L. A., Garnett, S. P., & Paxton, S. J. Eating disorder risk in adolescents with obesity. *Obesity Reviews* **22**, e13173 (2021).
19. Hawton, K. *et al.* Interventions for self-harm in children and adolescents. *Cochrane Database of Systematic Reviews* (2015) doi:10.1002/14651858.CD012013.
20. Rider, E. A., Ansari, E., Varrin, P. H. & Sparrow, J. Mental health and wellbeing of children and adolescents during the covid-19 pandemic. 14.
21. Ponizovsky, A. M., Marom, E. & Fitoussi, I. Trends in attention deficit hyperactivity disorder drugs consumption, Israel, 2005–2012. *Pharmacoepidemiology and Drug Safety* **23**, 534–538 (2014).
22. Vinker, S., Vinker, R. & Elhayany, A. Prevalence of Methylphenidate Use among Israeli Children 1998–2004. *Clin. Drug Investig.* **26**, 161–167 (2006).
23. Cascade, E., Kalali, A. H., Weisler, R. H. & Lenderts, S. Seasonality and the Changing Adult/Child Prescription Ratios in ADHD Therapy. *Psychiatry (Edgmont)* **5**, 23–25 (2008).
24. Khoza, S., Oladapo, A. O. & Barner, J. C. Adherence to medication for attention deficit/hyperactivity disorder: does time frame matter? *Journal of Pharmaceutical Health Services Research* **2**, 157–163 (2011).
25. Shyu, Y.-C. *et al.* Seasonal Patterns of Medications for Treating Attention-Deficit/Hyperactivity Disorder: Comparison of Methylphenidate and Atomoxetine. *Clinical Therapeutics* **38**, 595–602 (2016).
26. Cohen, H. A., Savitsky, B., Ashkenasi, A. & Hoshen, M. Seasonality of Methylphenidate Administration among Children in Israel. *Isr Med Assoc J* **18**, 655–660 (2016).

27. Issues in Diagnosis of Attention-Deficit/Hyperactivity Disorder in Adolescents - James Nahlik, 2004. <https://journals.sagepub.com/doi/abs/10.1177/000992280404300101>.
28. Liu, H., Zhang, M., Yang, Q. & Yu, B. Gender differences in the influence of social isolation and loneliness on depressive symptoms in college students: a longitudinal study. *Soc Psychiatry Psychiatr Epidemiol* **55**, 251–257 (2020).
29. Loades, M. E. *et al.* Rapid Systematic Review: The Impact of Social Isolation and Loneliness on the Mental Health of Children and Adolescents in the Context of COVID-19. *Journal of the American Academy of Child & Adolescent Psychiatry* **59**, 1218-1239.e3 (2020).
30. World Health Organization. Adolescents' mental well-being. (2016).
31. Riecher-Rössler, A. Sex and gender differences in mental disorders. *The Lancet Psychiatry* **4**, 8–9 (2017).
32. Kuehner, C. Why is depression more common among women than among men? *The Lancet Psychiatry* **4**, 146–158 (2017).
33. Essau, C. A., Lewinsohn, P. M., Seeley, J. R. & Sasagawa, S. Gender differences in the developmental course of depression. *Journal of Affective Disorders* **127**, 185–190 (2010).
34. Oldehinkel, A. J., Verhulst, F. C. & Ormel, J. Mental health problems during puberty: Tanner stage-related differences in specific symptoms. The TRAILS study. *Journal of Adolescence* **34**, 73–85 (2011).
35. Hall-Lande, J. A., Eisenberg, M. E., Christenson, S. L. & Neumark-Sztainer, D. Social isolation, psychological health, and protective factors in adolescence. *Adolescence* **42**, 265–286 (2007).

36. Coleman-Brueckheimer, K. & Dein, S. Health Care Behaviours and Beliefs in Hasidic Jewish Populations: A Systematic Review of the Literature. *J Relig Health* **50**, 422–436 (2011).
37. Saban, M., Myers, V., Shachar, T., Miron, O. & Wilf-Miron, R. R. Effect of Socioeconomic and Ethnic Characteristics on COVID-19 Infection: the Case of the Ultra-Orthodox and the Arab Communities in Israel. *J. Racial and Ethnic Health Disparities* (2021) doi:10.1007/s40615-021-00991-z.
38. Sivan, E. & Caplan, K. *Israeli Haredim: integration without assimilation*. (2003).
39. Greenberg, D. & Witztum, E. Challenges and conflicts in the delivery of mental health services to ultra-orthodox Jews. *Asian Journal of Psychiatry* **6**, 71–73 (2013).
40. Pinto-Foltz, M. D. & Logsdon, M. C. Stigma Towards Mental Illness: A Concept Analysis Using Postpartum Depression as an Exemplar. *Issues in Mental Health Nursing* **29**, 21–36 (2008).
41. Chernichovsky, D. The Health of the Arab Israeli Population. 50.
42. Verhulst, F. & Tiemeier, H. Socioeconomic Inequalities and Mental Health Problems in Children and Adolescents. in *Mental Health and Illness of Children and Adolescents* (eds. Taylor, E., Verhulst, F., Wong, J. C. M. & Yoshida, K.) 257–274 (Springer, 2020). doi:10.1007/978-981-10-2348-4\_57.
43. Reiss, F. Socioeconomic inequalities and mental health problems in children and adolescents: A systematic review. *Social Science & Medicine* **90**, 24–31 (2013).
44. Bøe, T. *et al.* Socioeconomic Status and Child Mental Health: The Role of Parental Emotional Well-Being and Parenting Practices. *Journal of Abnormal Child Psychology* **42**, 705–715 (2014).

45. Achdut, N. & Sarid, O. Socio-economic status, self-rated health and mental health: the mediation effect of social participation on early-late midlife and older adults. *Isr J Health Policy Res* **9**, 4 (2020).
46. Bart, A., and Ben-Ari, A. Personal and social adjustment to divorce in a Haredi community in Israel. *Haredi Soc. Stud.* **2**, 88–116. **2**, 88–116 (2015).
47. Tchernichovsky, D., and Sharoni, C. The connection between social capital and health among the ultra-Orthodox. *State of the Nation Report* 383–409 (2015).
48. Overview of Child and Adolescent Mental Health Services in Israel » Brookdale. *Brookdale* <https://brookdale.jdc.org.il/en/publication/overview-child-adolescent-mental-health-services-israel/>.

**Table 1:** Study population characteristics, incidence rates of mental health diagnoses and medications by year

a. Diagnoses

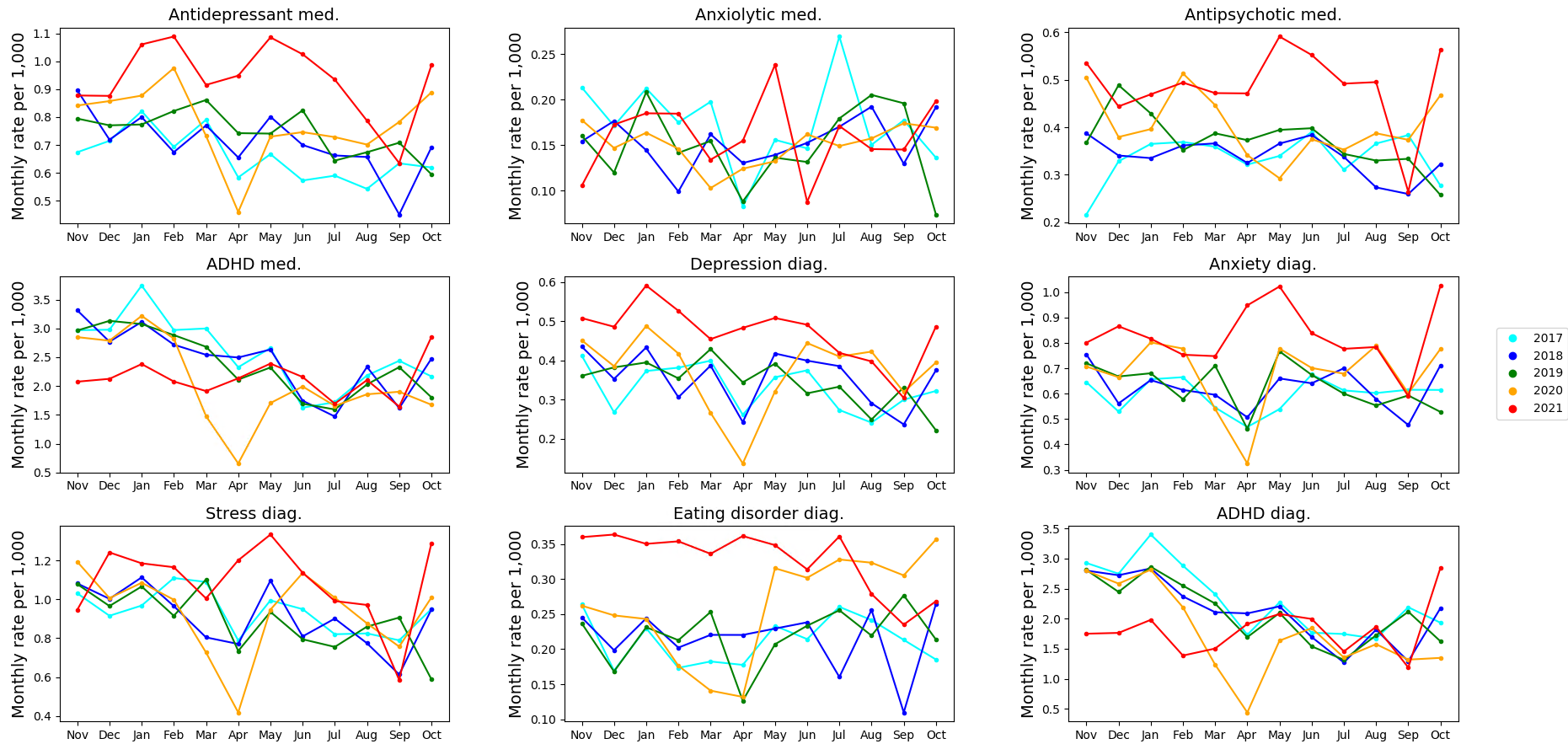
Characteristics	Depression					Anxiety					Eating disorder					Stress					ADHD					
	Year	Rate				P value	Rate				P value	Rate				P value	Rate				P value					
		N population	N incidence	per 1,000	RR year/year-1 (95% CI)		N population	N incidence	per 1,000	RR year/year-1 (95% CI)		N population	N incidence	per 1,000	RR year/year-1 (95% CI)		N population	N incidence	per 1,000	RR year/year-1 (95% CI)		N population	N incidence	per 1,000	RR year/year-1 (95% CI)	
<b>Total</b>	2017	216,121	945	4.4		209,208	1,534	7.3		212,104	523	2.5		201,670	2,169	10.8		158,159	3,924	24.8						
	2018	220,668	1,005	4.6	1.04 (0.95 - 1.14)	0.376	213,330	1,638	7.7	1.05 (0.98 - 1.12)	0.193	216,109	559	2.6	1.05 (0.93 - 1.18)	0.447	204,166	2,206	10.8	1.00 (0.95 - 1.07)	0.879	159,974	3,654	22.8	0.92 (0.88 - 0.96)	<0.001
	2019	224,552	978	4.4	0.96 (0.88 - 1.04)	0.322	216,751	1,657	7.6	1.00 (0.93 - 1.07)	0.903	219,590	567	2.6	1.00 (0.89 - 1.12)	1.000	205,791	2,132	10.4	0.96 (0.90 - 1.02)	0.165	162,529	3,657	22.5	0.99 (0.94 - 1.03)	0.523
	2020	230,517	1,081	4.7	1.08 (0.99 - 1.17)	0.093	222,127	1,839	8.3	1.08 (1.01 - 1.16)	0.018	225,047	721	3.2	1.24 (1.11 - 1.39)	<0.001	209,333	2,284	10.9	1.05 (0.99 - 1.12)	0.085	166,922	3,201	19.2	0.85 (0.81 - 0.89)	<0.001
	2021	236,291	1,398	5.9	1.26 (1.17 - 1.37)	<0.001	227,311	2,275	10.0	1.21 (1.14 - 1.29)	<0.001	230,499	894	3.9	1.21 (1.10 - 1.34)	<0.001	212,331	2,632	12.4	1.14 (1.07 - 1.20)	<0.001	172,073	3,262	19.0	0.99 (0.94 - 1.04)	0.642
<b>Gender</b>																										
<b>Male</b>	2017	74,563	219	2.9		72,386	450	6.2		72,594	188	2.6		69,296	833	12.0		55,799	1,603	28.7						
	2018	75,226	222	3.0	1.00 (0.83 - 1.21)	0.962	72,962	483	6.6	1.06 (0.94 - 1.21)	0.341	73,162	181	2.5	0.96 (0.78 - 1.17)	0.677	69,227	820	11.8	0.99 (0.90 - 1.09)	0.767	55,881	1,481	26.5	0.92 (0.86 - 0.99)	0.024
	2019	75,907	214	2.8	0.96 (0.79 - 1.15)	0.666	73,494	502	6.8	1.03 (0.91 - 1.17)	0.632	73,804	181	2.5	0.99 (0.81 - 1.22)	0.958	68,944	772	11.2	0.95 (0.86 - 1.04)	0.267	56,567	1,375	24.3	0.92 (0.85 - 0.99)	0.020
	2020	78,036	230	2.9	1.05 (0.87 - 1.26)	0.669	75,369	539	7.2	1.05 (0.93 - 1.18)	0.474	75,935	223	2.9	1.20 (0.98 - 1.46)	0.073	70,082	777	11.1	0.99 (0.90 - 1.09)	0.858	58,521	1,256	21.5	0.88 (0.82 - 0.95)	0.001
	2021	81,247	338	4.2	1.41 (1.19 - 1.67)	<0.001	78,300	667	8.5	1.19 (1.06 - 1.33)	0.002	79,002	275	3.5	1.19 (0.99 - 1.41)	0.059	72,176	936	13.0	1.17 (1.06 - 1.29)	0.001	61,447	1,333	21.7	1.01 (0.94 - 1.09)	0.796
<b>Female</b>	2017	71,692	300	4.2		69,327	487	7.0		70,374	206	2.9		66,829	687	10.3		52,167	1,449	27.8						
	2018	73,843	341	4.6	1.10 (0.94 - 1.29)	0.220	71,306	558	7.8	1.11 (0.99 - 1.26)	0.082	72,117	209	2.9	0.99 (0.82 - 1.20)	0.922	68,283	700	10.3	1.00 (0.90 - 1.11)	0.978	53,416	1,328	24.9	0.90 (0.83 - 0.96)	0.003
	2019	75,910	317	4.2	0.90 (0.78 - 1.05)	0.197	73,264	534	7.3	0.93 (0.83 - 1.05)	0.248	74,070	216	2.9	1.01 (0.83 - 1.22)	0.961	69,619	695	10.0	0.97 (0.88 - 1.08)	0.628	54,742	1,440	26.3	1.06 (0.98 - 1.14)	0.133
	2020	77,165	389	5.0	1.21 (1.04 - 1.40)	0.013	74,396	600	8.1	1.11 (0.98 - 1.24)	0.089	75,200	269	3.6	1.23 (1.03 - 1.47)	0.026	70,163	770	11.0	1.10 (0.99 - 1.22)	0.070	55,511	1,168	21.0	0.88 (0.74 - 1.06)	0.062
	2021	77,825	485	6.2	1.24 (1.08 - 1.41)	0.002	74,891	751	10.0	1.24 (1.12 - 1.38)	<0.001	75,807	354	4.7	1.31 (1.11 - 1.53)	0.001	69,895	899	12.9	1.17 (1.06 - 1.29)	0.001	56,428	1,217	21.6	1.03 (0.95 - 1.11)	0.548
<b>Age groups</b>																										
<b>12-13 years old</b>	2017	51,128	218	4.3		49,463	363	7.3		50,300	132	2.6		47,787	475	9.9		36,857	1,118	30.3						
	2018	52,743	258	4.9	1.15 (0.96 - 1.37)	0.141	50,952	407	8.0	1.09 (0.94 - 1.25)	0.247	51,783	137	2.6	1.01 (0.79 - 1.28)	0.951	48,927	455	9.3	0.94 (0.82 - 1.06)	0.323	37,767	1,080	28.6	0.94 (0.87 - 1.02)	0.166
	2019	54,216	272	5.0	1.03 (0.86 - 1.22)	0.794	52,282	444	8.5	1.06 (0.93 - 1.22)	0.371	53,149	160	3.0	1.14 (0.91 - 1.43)	0.270	49,898	463	9.3	1.00 (0.88 - 1.14)	1.000	38,859	1,033	26.6	0.93 (0.85 - 1.01)	0.089
	2020	56,274	247	4.4	0.87 (0.74 - 1.04)	0.135	54,159	463	8.5	1.01 (0.88 - 1.15)	0.947	55,078	205	3.7	1.24 (1.01 - 1.52)	0.046	51,433	507	9.9	1.06 (0.94 - 1.20)	0.350	40,482	991	24.5	0.92 (0.84 - 1.00)	0.062
	2021	58,247	348	6.0	1.36 (1.16 - 1.60)	<0.001	55,934	583	10.4	1.22 (1.08 - 1.38)	0.001	56,969	268	4.7	1.26 (1.05 - 1.52)	0.011	52,765	593	11.2	1.14 (1.01 - 1.28)	0.031	42,312	1,034	24.4	1.00 (0.92 - 1.09)	0.982
<b>14-15 years old</b>	2017	110,989	427	3.8		107,062	749	7.0		109,179	126	1.2		102,598	990	9.6		73,816	1,988	26.9						
	2018	113,307	443	3.9	1.02 (0.89 - 1.16)	0.839	109,137	791	7.2	1.04 (0.94 - 1.14)	0.490	111,185	144	1.3	1.12 (0.88 - 1.43)	0.361	103,829	1,014	9.8	1.01 (0.93 - 1.10)	0.788	74,664	1,846	24.7	0.92 (0.86 - 0.98)	0.008
	2019	115,245	417	3.6	0.93 (0.81 - 1.06)	0.260	110,750	723	6.5	0.90 (0.81 - 1.00)	0.042	112,863	124	1.1	0.85 (0.67 - 1.08)	0.179	104,505	885	8.5	0.87 (0.79 - 0.95)	0.002	75,835	1,850	24.4	0.99 (0.93 - 1.05)	0.689
	2020	118,088	429	3.6	1.00 (0.88 - 1.15)	0.973	113,309	794	7.0	1.07 (0.97 - 1.19)	0.172	115,454	150	1.3	1.18 (0.93 - 1.50)	0.183	106,046	971	9.2	1.08 (0.99 - 1.18)	0.093	77,803	1,552	19.9	0.82 (0.76 - 0.88)	<0.001
	2021	120,988	447	3.7	1.02 (0.89 - 1.16)	0.813	115,801	941	8.1	1.16 (1.06 - 1.27)	0.002	118,174	153	1.3	1.00 (0.80 - 1.25)	1.000	107,329	991	9.2	1.01 (0.92 - 1.10)	0.856	80,338	1,504	18.7	0.94 (0.87 - 1.01)	0.079
<b>16-17 years old</b>	2017	105,132	518	4.9		102,146	785	7.7		102,925	397	3.9		99,072	1,179	11.9		84,343	1,936	23.0						
	2018	107,361	562	5.2	1.06 (0.94 - 1.20)	0.329	104,193	847	8.1	1.06 (0.96 - 1.17)	0.263	104,924	415	4.0	1.03 (0.89 - 1.18)	0.725	100,337	1,192	11.9	1.00 (0.92 - 1.08)	0.984	85,310	1,808	21.2	0.92 (0.87 - 0.98)	0.014
	2019	109,307	561	5.1	0.98 (0.87 - 1.10)	0.742	106,001	934	8.8	1.08 (0.99 - 1.19)	0.051	106,727	443	4.2	1.05 (0.92 - 1.20)	0.494	101,286	1,247	12.3	1.04 (0.96 - 1.12)	0.381	86,694	1,807	20.8	0.98 (0.92 - 1.05)	0.614
	2020	112,429	652	5.8	1.13 (1.01 - 1.26)	0.036	108,818	1,045	9.6	1.09 (1.00 - 1.19)	0.095	109,593	571	5.2	1.16 (1.11 - 1.42)	<0.001	103,287	1,313	12.7	1.03 (0.96 - 1.12)	0.426	89,119	1,649	18.5	0.89 (0.83 - 0.95)	<0.001
	2021	115,303	951	8.2	1.42 (1.29 - 1.57)	<0.001	111,510	1,334	12.0	1.25 (1.15 - 1.35)	<0.001	112,325	741	6.6	1.27 (1.14 - 1.41)	<0.001	105,002	1,641	15.6	1.23 (1.14 - 1.32)	<0.001	91,735	1,758	19.2	1.04 (0.97 - 1.11)	0.307
<b>Sector</b>																										
<b>General Jewish</b>	2017	174,062	851	4.9		167,906	1,336	8.0		170,742	470	2.8		160,951	1,895	11.8		123,540	3,424	27.7						
	2018	177,600	900	5.1	1.04 (0.94 - 1.14)	0.458	171,070	1,456	8.5	1.07 (0.99 - 1.15)	0.077	173,872	506	2.9	1.06 (0.93 - 1.20)	0.387	162,749	1,952	12.0	1.02 (0.96 - 1.09)	0.570	124,945	3,187	25.5	0.92 (0.88 - 0.97)	0.001
	2019	180,155	876	4.9	0.96 (0.87 - 1.05)	0.392	173,174	1,500	8.7	1.02 (0.95 - 1.09)	0.644	176,131	514	2.9	1.00 (0.89 - 1.13)	0.975	163,327	1,860	11.4	0.95 (0.89 - 1.01)	0.110	126,440	3,167	25.0	0.98 (0.94 - 1.03)	0.469
	2020	185,019	979	5.3	1.09 (0.99 - 1.19)	0.069	177,481	1,655	9.3	1.08 (1.00 - 1.15)	0.038	180,607	682	3.8	1.29 (1.15 - 1.45)	<0.001	166,137	1,987	12.0	1.05 (0.99 - 1.12)	0.127	130,139	2,797	21.5	0.86 (0.82 - 0.90)	<0.001
	2021	189,689	1,305	6.9	1.30 (1.20 - 1.41)	<0.001	181,615	2,043	11.2	1.21 (1.13 - 1.29)	<0.001	185,017	832	4.5	1.19 (1.08 - 1.32)	0.001	168,472	2,312	13.7	1.15 (1.08 - 1.22)	<0.001	134,397	2,776	20.7	0.96 (0.91 - 1.01)	0.136
<b>Ultra orthodox Jewish</b>	2017	26,314	69	2.6		25,830	149	5.8		25,705	36	1.4		25,562	177	6.9		20,911	386	18.5						
	2018	27,045	76	2.8	1.07 (0.77 - 1.48)	0.740	26,502	124	4.7	0.81 (0.64 - 1.03)	0.089	26,313	43	1.6	1.17 (0.75 - 1.82)	0.502	26,039	177	6.8	0.98 (0.80 - 1.21)	0.873	21,163	384	18.1	0.98 (0.85 - 1.13)	0.827
	2019	27,423	73	2.7	0.95 (0.69 - 1.31)	0.744	26,852	114	4.2	0.91 (0.70 - 1.17)	0.475	26,563	43													



b. Medications

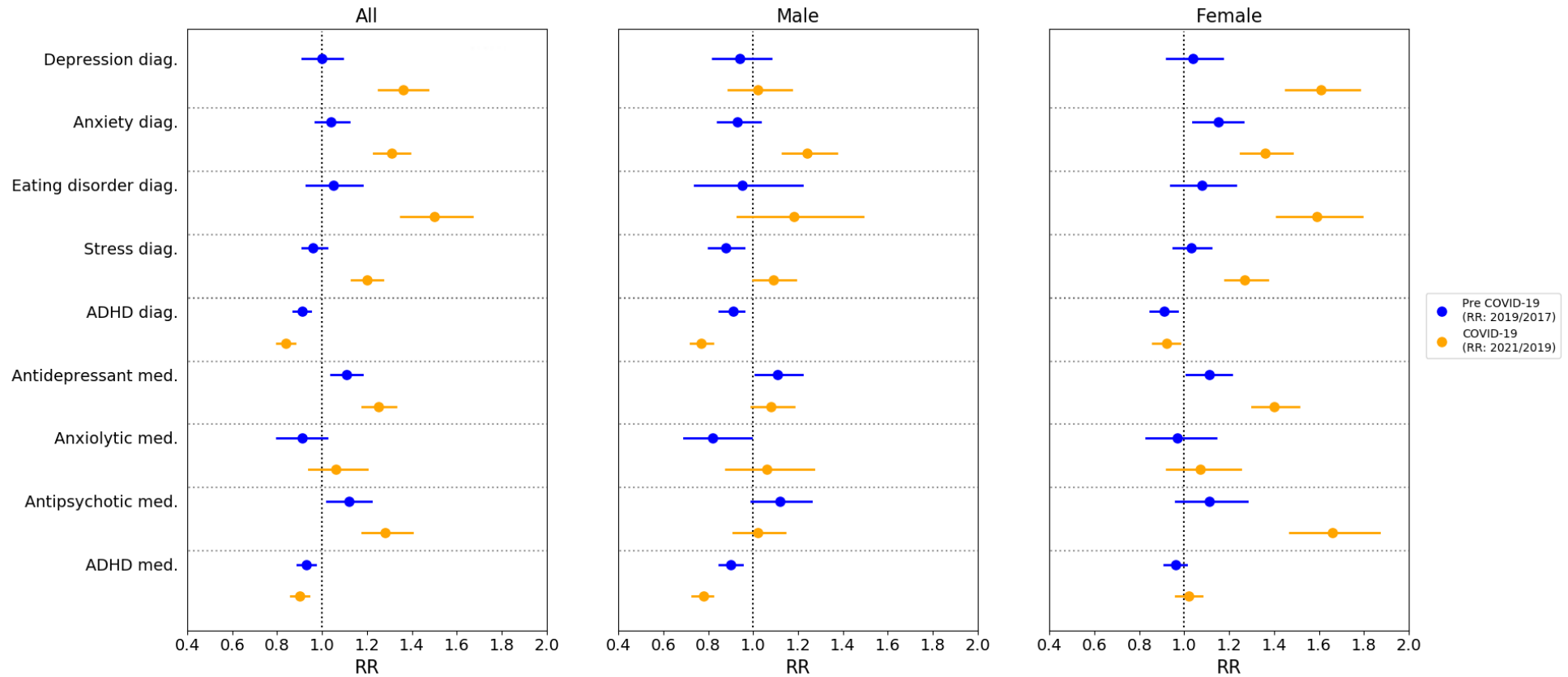
Characteristics	Antidepressant					Anxiolytic					Antipsychotic					ADHD Agents					
	Year	population	incidence	Rate per 1,000	RR year/year-1 (95% CI)	P value	population	incidence	Rate per 1,000	RR year/year-1 (95% CI)	P value	population	incidence	Rate per 1,000	RR year/year-1 (95% CI)	P value	population	incidence	Rate per 1,000	RR year/year-1 (95% CI)	P value
<b>Total</b>	2017	212,163	1,787	8.4			215,824	539	2.5			212,741	850	4.0			169,423	4,886	28.8		
	2018	216,569	1,943	9.0	1.07 (1.00 - 1.14)	0.054	220,652	488	2.2	0.89 (0.78 - 1.00)	0.053	216,937	877	4.0	1.01 (0.92 - 1.11)	0.810	171,754	4,734	27.6	0.96 (0.92 - 0.99)	0.025
	2019	220,245	2,054	9.3	1.04 (0.98 - 1.11)	0.221	224,870	509	2.3	1.02 (0.90 - 1.16)	0.727	220,544	983	4.5	1.10 (1.01 - 1.21)	0.036	174,454	4,677	26.8	0.97 (0.93 - 1.01)	0.174
	2020	225,826	2,198	9.7	1.04 (0.98 - 1.11)	0.265	231,124	497	2.2	0.95 (0.84 - 1.07)	0.430	226,158	1,069	4.7	1.06 (0.97 - 1.16)	0.184	179,053	4,193	23.4	0.87 (0.84 - 0.91)	<0.001
	2021	231,381	2,706	11.7	1.20 (1.14 - 1.27)	<0.001	237,292	572	2.4	1.12 (0.99 - 1.26)	0.066	231,593	1,326	5.7	1.21 (1.12 - 1.31)	<0.001	184,540	4,453	24.1	1.03 (0.99 - 1.07)	0.160
<b>Gender</b>																					
<b>Male</b>	2017	73,609	436	5.9			74,351	71	1.0			73,193	268	3.7			60,395	1,789	29.6		
	2018	74,281	467	6.3	1.06 (0.93 - 1.21)	0.385	75,109	74	1.0	1.03 (0.74 - 1.43)	0.868	73,774	255	3.5	0.94 (0.80 - 1.12)	0.512	60,738	1,698	28.0	0.94 (0.88 - 1.01)	0.086
	2019	74,974	537	7.2	1.14 (1.01 - 1.29)	0.040	75,875	70	0.9	0.94 (0.68 - 1.30)	0.739	74,360	294	4.0	1.14 (0.97 - 1.35)	0.124	61,305	1,643	26.8	0.96 (0.90 - 1.03)	0.219
	2020	76,998	557	7.2	1.01 (0.90 - 1.14)	0.879	78,081	63	0.8	0.87 (0.62 - 1.23)	0.488	76,479	307	4.0	1.02 (0.86 - 1.19)	0.870	63,206	1,416	22.4	0.84 (0.78 - 0.90)	<0.001
	2021	80,126	676	8.4	1.17 (1.04 - 1.30)	0.007	81,363	83	1.0	1.26 (0.91 - 1.75)	0.185	79,590	352	4.4	1.10 (0.94 - 1.28)	0.226	66,260	1,496	22.6	1.01 (0.94 - 1.08)	0.837
<b>Female</b>	2017	70,412	576	8.2			71,562	158	2.2			70,550	289	4.1			56,031	1,718	30.7		
	2018	72,479	700	9.7	1.18 (1.06 - 1.32)	0.003	73,766	127	1.7	0.78 (0.62 - 0.98)	0.038	72,521	313	4.3	1.05 (0.90 - 1.24)	0.540	57,316	1,701	29.7	0.97 (0.91 - 1.04)	0.339
	2019	74,450	684	9.2	0.95 (0.86 - 1.06)	0.358	76,027	128	1.7	0.98 (0.77 - 1.25)	0.900	74,508	326	4.4	1.01 (0.87 - 1.18)	0.874	58,836	1,723	29.3	0.99 (0.92 - 1.06)	0.073
	2020	75,628	696	9.2	1.00 (0.90 - 1.11)	0.978	77,375	143	1.8	1.10 (0.86 - 1.39)	0.466	75,631	347	4.6	1.05 (0.90 - 1.22)	0.562	59,850	1,448	24.2	0.83 (0.77 - 0.89)	<0.001
	2021	76,253	928	12.2	1.32 (1.20 - 1.46)	<0.001	78,170	141	1.8	0.98 (0.77 - 1.23)	0.859	76,189	459	6.0	1.31 (1.14 - 1.51)	<0.001	60,644	1,605	26.5	1.09 (1.02 - 1.17)	0.013
<b>Age groups</b>																					
<b>12-13 years old</b>	2017	50,092	461	9.2			51,089	123	2.4			50,499	195	3.9			39,003	1,443	37.0		
	2018	51,611	527	10.2	1.11 (0.98 - 1.26)	0.103	52,794	138	2.6	1.09 (0.85 - 1.38)	0.536	52,013	169	3.2	0.84 (0.69 - 1.03)	0.104	39,922	1,373	34.4	0.93 (0.86 - 1.00)	0.050
	2019	52,989	568	10.7	1.05 (0.93 - 1.18)	0.430	54,309	128	2.4	0.90 (0.71 - 1.15)	0.425	53,379	208	3.9	1.20 (0.98 - 1.47)	0.080	41,085	1,375	33.5	0.97 (0.90 - 1.05)	0.473
	2020	54,956	607	11.0	1.03 (0.92 - 1.16)	0.618	56,447	107	1.9	0.80 (0.62 - 1.04)	0.102	55,400	234	4.2	1.08 (0.90 - 1.31)	0.418	42,745	1,272	29.8	0.89 (0.82 - 0.96)	0.002
	2021	56,794	758	13.3	1.21 (1.09 - 1.34)	<0.001	58,510	147	2.5	1.33 (1.03 - 1.70)	0.028	57,294	308	5.4	1.27 (1.07 - 1.51)	0.006	44,634	1,339	30.0	1.01 (0.93 - 1.09)	0.842
<b>14-15 years old</b>	2017	108,504	832	7.7			110,806	241	2.2			107,907	498	4.6			81,001	2,474	30.5		
	2018	110,798	932	8.4	1.10 (1.00 - 1.20)	0.053	113,272	208	1.8	0.84 (0.70 - 1.02)	0.080	109,966	511	4.6	1.01 (0.89 - 1.14)	0.925	82,071	2,357	28.7	0.94 (0.89 - 0.99)	0.031
	2019	112,594	957	8.5	1.01 (0.92 - 1.11)	0.835	115,366	207	1.8	0.98 (0.81 - 1.18)	0.844	111,631	578	5.2	1.11 (0.99 - 1.26)	0.078	83,246	2,295	27.6	0.96 (0.91 - 1.02)	0.158
	2020	115,235	935	8.1	0.95 (0.87 - 1.04)	0.321	118,310	238	2.0	1.12 (0.93 - 1.35)	0.236	114,177	565	4.9	0.96 (0.85 - 1.07)	0.458	85,409	1,918	22.5	0.81 (0.77 - 0.86)	<0.001
	2021	118,047	1,086	9.2	1.13 (1.04 - 1.24)	0.005	121,341	230	1.9	0.94 (0.79 - 1.13)	0.548	116,821	618	5.3	1.07 (0.95 - 1.20)	0.256	88,125	1,884	21.4	0.95 (0.89 - 1.01)	0.127
<b>16-17 years old</b>	2017	103,659	955	9.2			105,018	298	2.8			104,834	352	3.4			88,422	2,412	27.3		
	2018	105,771	1,011	9.6	1.04 (0.95 - 1.13)	0.415	107,380	280	2.6	0.92 (0.78 - 1.08)	0.318	106,971	366	3.4	1.02 (0.88 - 1.18)	0.823	89,683	2,377	26.5	0.97 (0.92 - 1.03)	0.319
	2019	107,651	1,097	10.2	1.07 (0.98 - 1.16)	0.142	109,504	302	2.8	1.06 (0.90 - 1.24)	0.507	108,913	405	3.7	1.09 (0.94 - 1.25)	0.249	91,208	2,382	26.1	0.99 (0.93 - 1.04)	0.607
	2020	110,591	1,263	11.4	1.12 (1.03 - 1.22)	0.006	112,814	259	2.3	0.83 (0.70 - 0.98)	0.031	111,981	504	4.5	1.21 (1.06 - 1.38)	0.004	93,644	2,275	24.3	0.93 (0.88 - 0.98)	0.013
	2021	113,334	1,620	14.3	1.25 (1.16 - 1.35)	<0.001	115,951	342	2.9	1.28 (1.09 - 1.51)	0.002	114,772	708	6.2	1.37 (1.22 - 1.54)	<0.001	96,415	2,569	26.6	1.10 (1.04 - 1.16)	0.001
<b>Sector</b>																					
<b>General Jewish</b>	2017	170,748	1,582	9.3			173,941	461	2.7			171,296	659	3.8			133,344	4,304	32.3		
	2018	174,114	1,707	9.8	1.06 (0.99 - 1.13)	0.107	177,737	409	2.3	0.87 (0.76 - 0.99)	0.038	174,559	670	3.8	1.00 (0.90 - 1.11)	0.978	135,086	4,168	30.9	0.96 (0.92 - 1.00)	0.036
	2019	176,479	1,794	10.2	1.04 (0.97 - 1.11)	0.285	180,585	431	2.4	1.04 (0.91 - 1.19)	0.604	176,880	748	4.2	1.10 (0.99 - 1.22)	0.070	136,686	4,064	29.7	0.96 (0.92 - 1.01)	0.089
	2020	181,047	1,951	10.8	1.06 (0.99 - 1.13)	0.073	185,714	413	2.2	0.93 (0.81 - 1.07)	0.318	181,497	851	4.7	1.11 (1.01 - 1.22)	0.040	140,548	3,692	26.3	0.88 (0.84 - 0.92)	<0.001
	2021	185,511	2,432	13.1	1.22 (1.15 - 1.29)	<0.001	190,761	499	2.6	1.18 (1.03 - 1.34)	0.015	185,885	1,056	5.7	1.21 (1.11 - 1.33)	<0.001	145,076	3,870	26.7	1.02 (0.97 - 1.06)	0.499
<b>Ultra orthodox Jewish</b>	2017	25,818	171	6.6			26,204	56	2.1			25,792	170	6.6			21,719	460	21.2		
	2018	26,549	206	7.8	1.17 (0.96 - 1.43)	0.134	26,944	47	1.7	0.82 (0.55 - 1.20)	0.325	26,456	185	7.0	1.06 (0.86 - 1.31)	0.595	22,051	477	21.6	1.02 (0.90 - 1.16)	0.766
	2019	26,884	221	8.2	1.06 (0.88 - 1.28)	0.560	27,339	50	1.8	1.05 (0.70 - 1.56)	0.839	26,771	214	8.0	1.14 (0.94 - 1.39)	0.191	22,142	497	22.4	1.04 (0.92 - 1.18)	0.582
	2020	27,769	192	6.9	0.84 (0.69 - 1.02)	0.084	28,322	68	2.4	1.31 (0.91 - 1.89)	0.167	27,654	189	6.8	0.85 (0.70 - 1.04)	0.121	22,750	382	16.8	0.75 (0.66 - 0.85)	<0.001
	2021	28,891	226	7.8	1.13 (0.93 - 1.37)	0.220	29,464	52	1.8	0.74 (0.51 - 1.05)	0.100	28,727	237	8.3	1.21 (1.00 - 1.46)	0.058	23,697	463	19.5	1.16 (1.02 - 1.33)	0.029
<b>Arab</b>	2017	15,597	34	2.2			15,679	22	1.4			15,653	21	1.3			14,360	122	8.5		
	2018	15,906	30	1.9	0.87 (0.53 - 1.41)	0.617	15,971	32	2.0	1.43 (0.83 - 2.46)	0.221	15,922	22	1.4	1.03 (0.57 - 1.87)	1.000	14,617	89	6.1	0.72 (0.55 - 0.94)	0.019
	2019	16,882	39	2.3	1.22 (0.76 - 1.97)	0.470	16,946	28	1.7	0.82 (0.50 - 1.37)	0.519	16,893	21	1.2	0.90 (0.49 - 1.64)	0.762	15,626	116	7.4	1.22 (0.93 - 1.61)	0.161
	2020	17,010	55	3.2	1.40 (0.93 - 2.11)	0.121	17,088	16	0.9	0.57 (0.31 - 1.05)	0.071	17,007	29	1.7	1.37 (0.78 - 2.41)	0.322	15,755	119	7.6	1.02 (0.79 - 1.31)	0.896
	2021	16,979	48	2.8	0.87 (0.59 - 1.29)	0.554	17,067	21	1.2	1.31 (0.69 - 2.52)	0.417	16,981	33	1.9	1.14 (0.69 - 1.88)	0.614	15,767	120	7.6	1.01 (0.78 -	

**Figure 1:** Monthly incidence rates of mental health diagnoses and drug dispensation, comparison by years

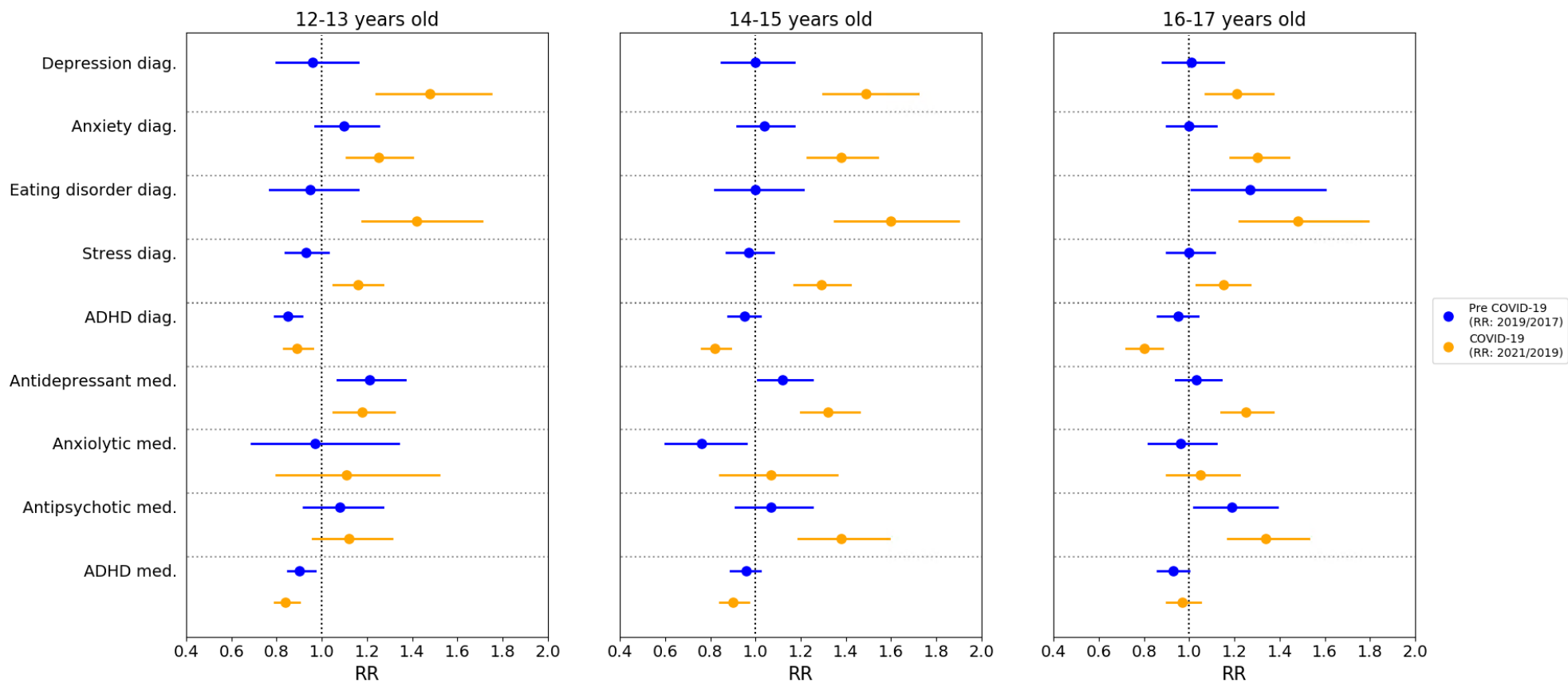


**Figure 2:** Relative risks (RR) and 95% CI of incidence rates Pre COVID-19 (2019/2017 years; blue) and COVID-19 (2021/2019 years; orange): (a) partition by gender; (b) partition by age; (c) partition by sector; (d) partition by socioeconomic score.

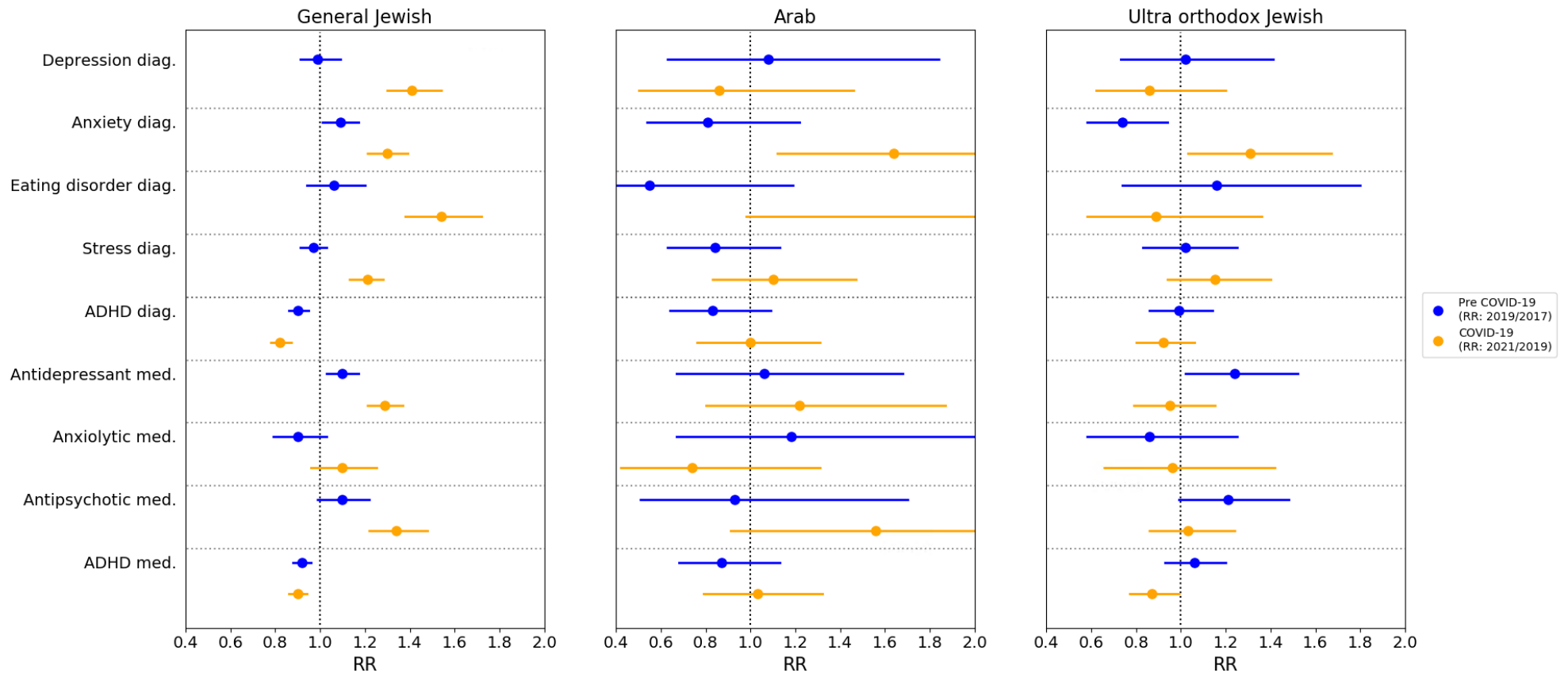
a. Gender



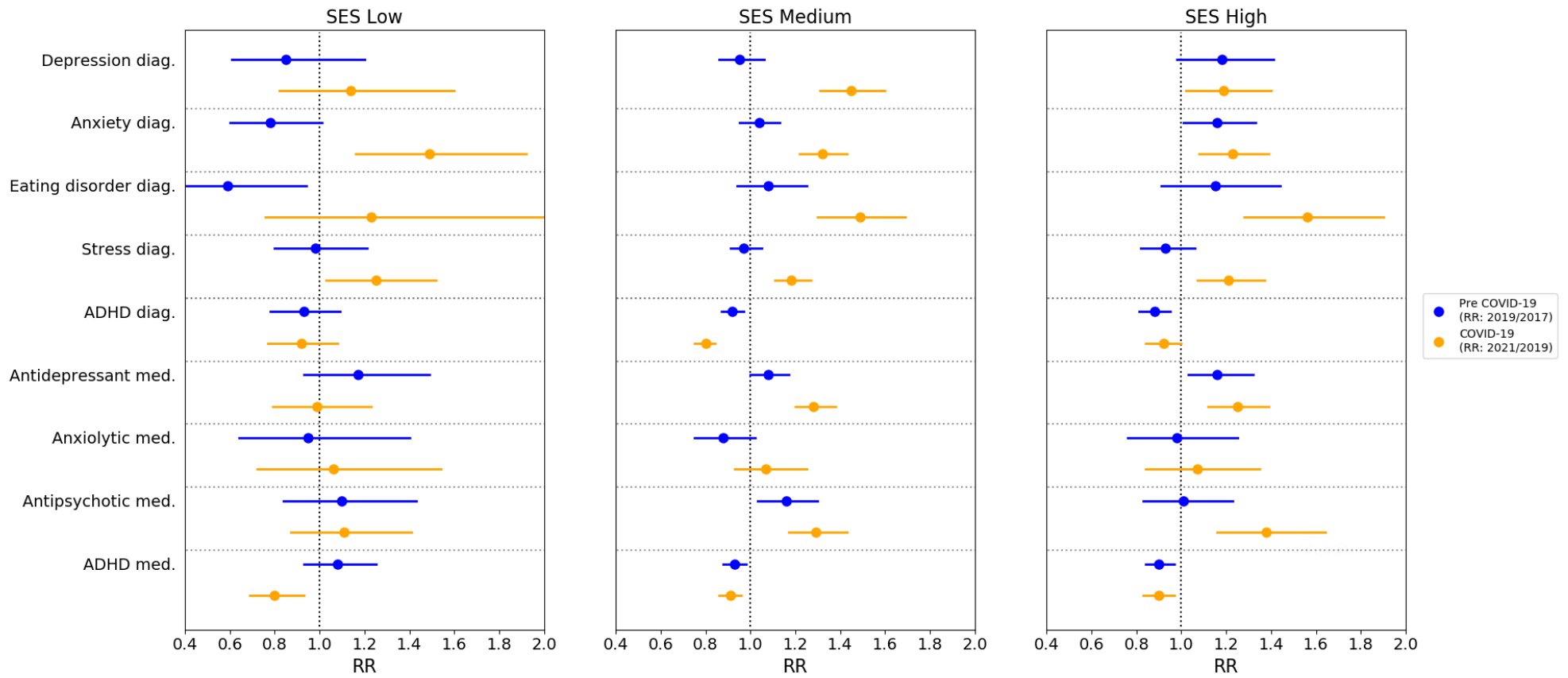
b. Age groups



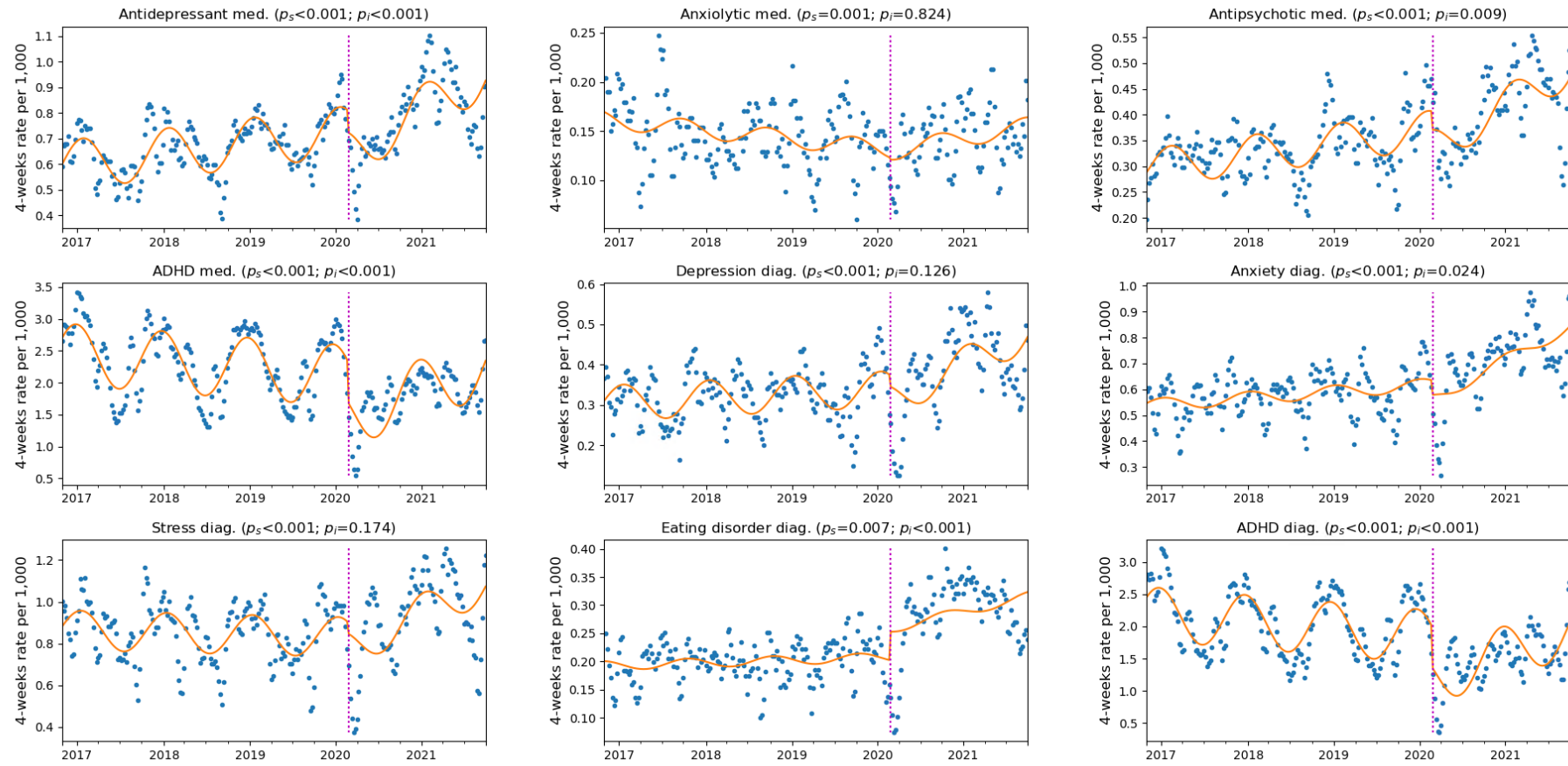
c. Population Sector



d. Socioeconomic status (SES)



**Figure 3:** Interrupted Times Series Analysis (ITS) for mental health incidence for 5 years.



**Legends:** The magenta line delineates Feb. 27<sup>th</sup>, the date of the first COVID-19 case in Israel. Orange lines depict ITS models with an interruption on this date.

Blue dots represent incidence rates for a 4-week period.