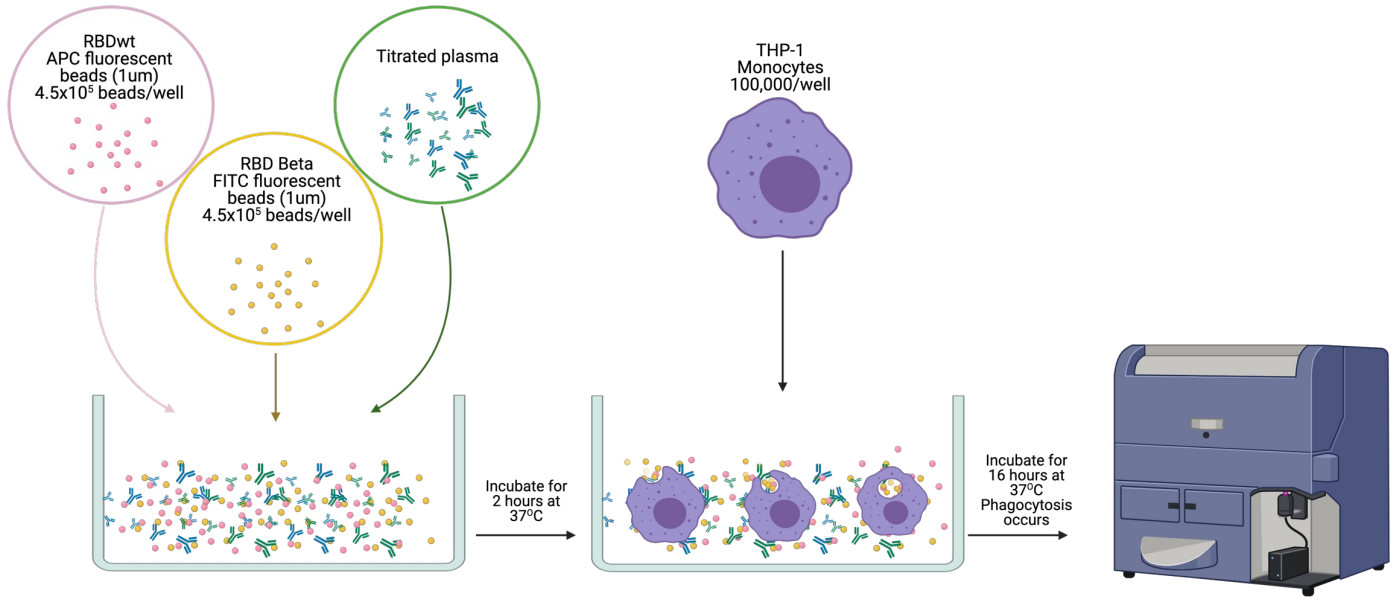
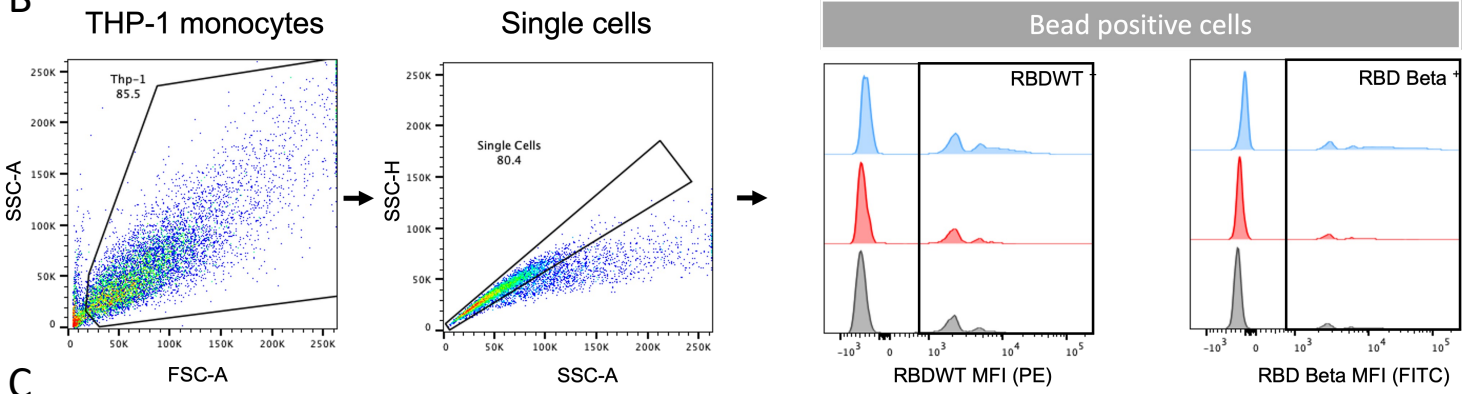


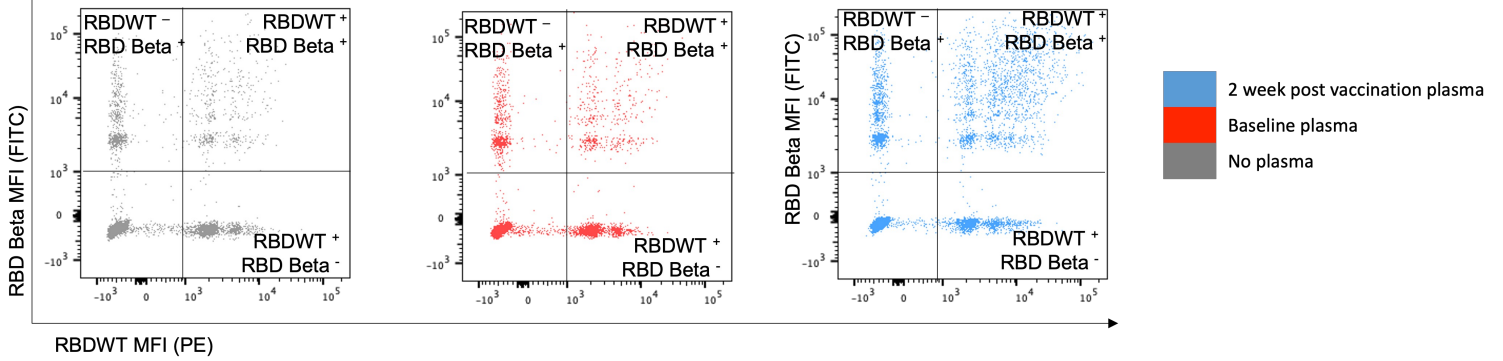
A



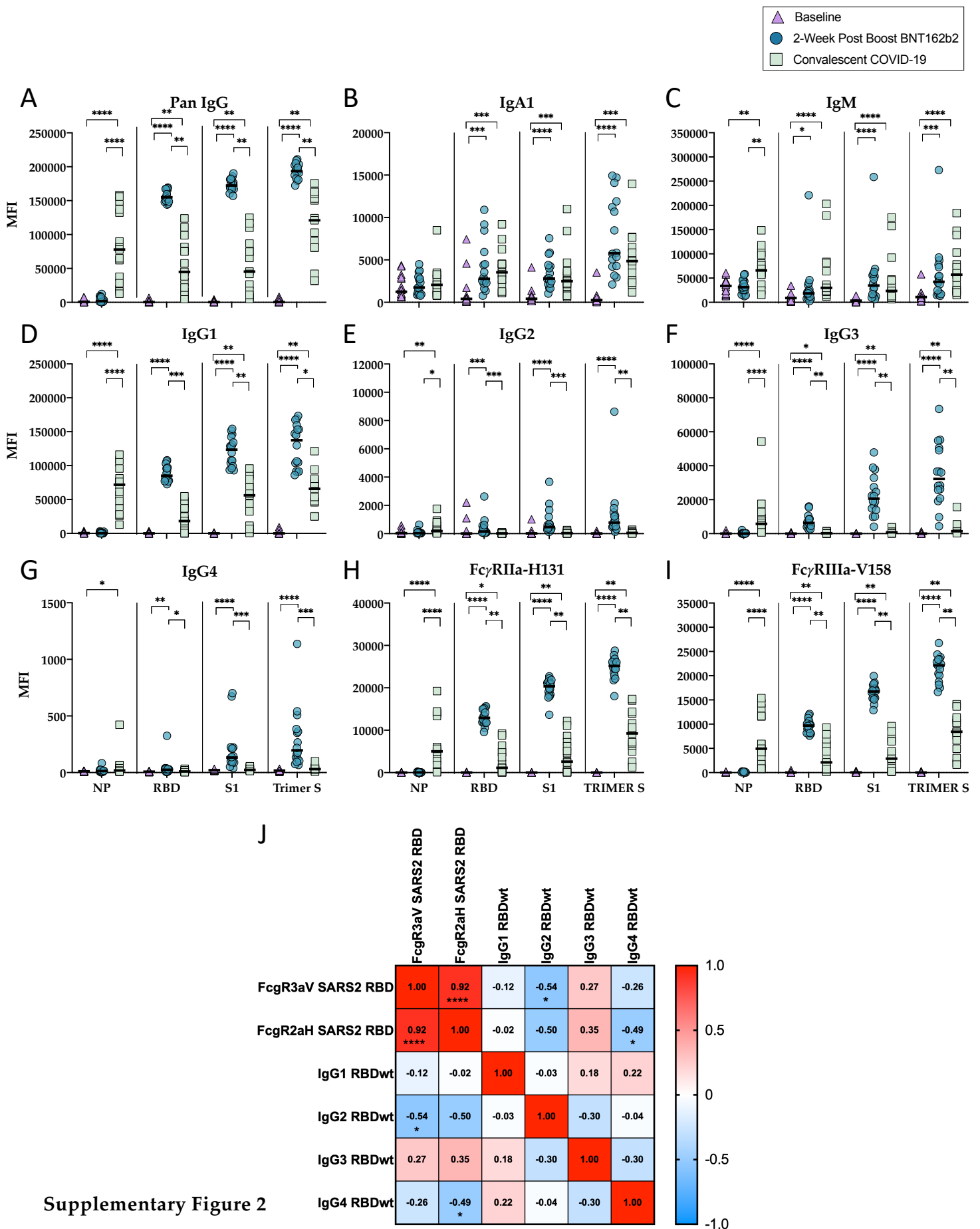
B

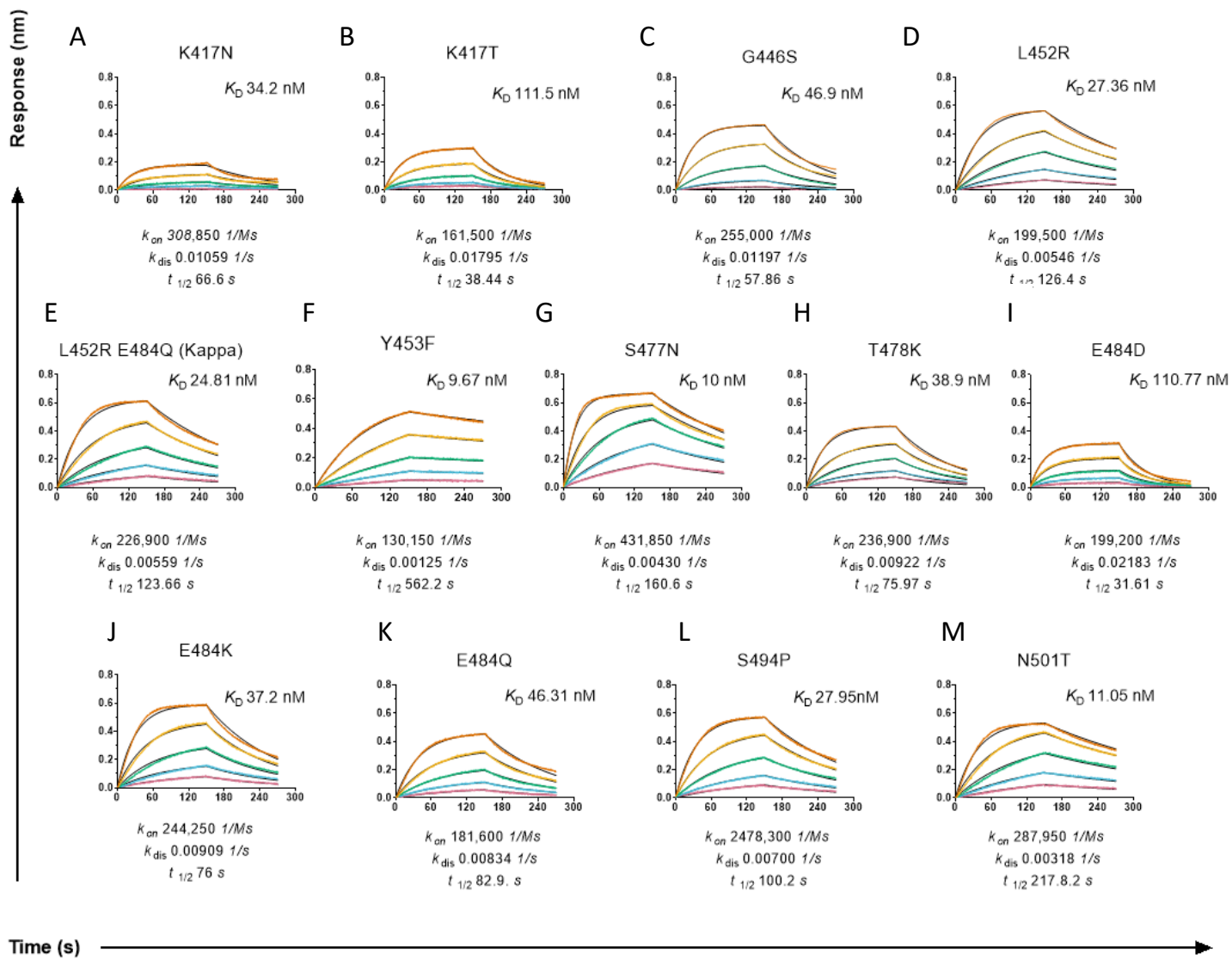


C



Supplementary Figure 1





Supplementary Figure 3

Supplementary Table 1

Bead Supplier	Bead Region	Bead Catalogue Number	Antigen	Protein Coupled/1x10⁷ beads
Biorad	14	MC10014-01	Spike S1	100ug
Biorad	22	MC10022-01	Nucleoprotein	40ug
Biorad	76	MC10076-01	Spike Trimer	100ug
Biorad	74	MC10074-01	Influenza H1Cal2009 (control)	100ug
Biorad	15	MC10015-01	SIVgp120 (control)	100ug

Supplementary Table 2

Bead Supplier	Bead Region	Bead Catalogue Number	RBD Recombinant Protein	Protein Coupled/1x10⁷ beads
Biorad	6	MC12006-01	E406W	100ug
Biorad	7	MC10007-01	K417N	100ug
Biorad	9	MC10009-01	Ancestral wild-type (WT)	100ug
Biorad	12	MC10012-01	Y453F	100ug
Biorad	13	MC10013-01	R403K	100ug
Biorad	15	MC10015-01	G446S	100ug
Biorad	16	MC12016-01	G446V	100ug
Biorad	18	MC10018-01	L455F	100ug
Biorad	20	MC10020-01	A475V	100ug
Biorad	22	MC10022-01	G476S	100ug
Biorad	25	MC10025-01	S477I	100ug
Biorad	26	MC10026-01	S477N	100ug
Biorad	29	MC10029-01	N439K	100ug
Biorad	30	MC10030-01	T478I	100ug
Biorad	33	MC10033-01	N501T	100ug
Biorad	34	MC10034-01	G485R	100ug
Biorad	35	MC10035-01	Q493K	100ug
Biorad	37	MC10037-01	S494L	100ug
Biorad	36	MC10036-01	V483A	100ug
Biorad	38	MC10038-01	E484A	100ug
Biorad	39	MC10039-01	E484D	100ug
Biorad	42	MC10042-01	E484K	100ug
Biorad	44	MC10044-01	F490S	100ug
Biorad	46	MC10045-01	N501S	100ug
Biorad	47	MC10047-01	S477R	100ug
Biorad	48	MC10048-01	Y505W	100ug
Biorad	50	MC12050-01	F486L	100ug
Biorad	51	MC10051-01	Q493L	100ug
Biorad	52	MC10052-01	S494P	100ug
Biorad	53	MC10053-01	N501Y	100ug
Biorad	55	MC10055-01	T478K	100ug
Biorad	61	MC10061-01	N501Y, E484K, K417N (B.1.251; Beta)	100ug
Biorad	62	MC10062-01	V503F	100ug
Biorad	64	MC10064-01	K417T	100ug
Biorad	70	MC10070-01	L452R	100ug
Biorad	72	MC10072-01	E484Q	100ug
Biorad	73	MC10073-01	N501Y, E484K, K417T (P1; Gamma)	100ug
Biorad	74	MC10074-01	S477N	100ug
Biorad	75	MC10075-01	Y489H	100ug
Biorad	76	MC10076-01	L452R E484Q (B.1.617.1; Kappa)	100ug
Biorad	77	MC10077-01	A520S	100ug
Biorad	78	MC10078-01	L452R, T478K (B.1.617.2; Delta)	100ug
Biorad	22	MC10078-22	Ancestral RBD (SinoBiological; Catalogue # 40592-V08H)	100ug
Biorad	55	MC10078-55	Omicron RBD BA.2 (SinoBiological; Catalogue #40592-V08H123)	100ug

Supplementary Table 3

Dunn's multiple comparisons test	IgG Rank sum diff.	IgG Summary	IgG Adjusted P Value	ACE Rank sum diff.	ACE Summary	ACE Adjusted P Value	FcR2a Rank sum diff.	FcR2a Summary	FcR2a Adjusted P Value	FcR3a Rank sum diff.	FcR3a Summary	FcR3a Adjusted P Value
Ancestral vs. Delta	156	ns	0.4841	161.5	ns	0.3774	197	ns	0.0639	199	ns	0.0573
Ancestral vs. Kappa	315	****	<0.0001	139.5	ns	0.9799	359	****	<0.0001	290	***	0.0001
Ancestral vs. Beta	510	****	<0.0001	327.5	****	<0.0001	536	****	<0.0001	465	****	<0.0001
Ancestral vs. Gamma	546	****	<0.0001	352.5	****	<0.0001	550	****	<0.0001	464	****	<0.0001
Ancestral vs. K417T	-38	ns	>0.9999	-172.5	ns	0.2246	3	ns	>0.9999	18.5	ns	>0.9999
Ancestral vs. Y505W	-23	ns	>0.9999	272.5	***	0.0005	80	ns	>0.9999	0	ns	>0.9999
Ancestral vs. F486L	19	ns	>0.9999	-204.5	*	0.0423	33	ns	>0.9999	-92	ns	>0.9999
Ancestral vs. E484A	21	ns	>0.9999	101	ns	>0.9999	64	ns	>0.9999	31	ns	>0.9999
Ancestral vs. S494P	65.5	ns	>0.9999	139.5	ns	0.9799	52	ns	>0.9999	31	ns	>0.9999
Ancestral vs. Q493K	43	ns	>0.9999	-146.5	ns	0.7321	52	ns	>0.9999	182.5	ns	0.1367
Ancestral vs. L452R	47.5	ns	>0.9999	204.5	*	0.0423	34	ns	>0.9999	-6	ns	>0.9999
Ancestral vs. T478K	78	ns	>0.9999	-121.5	ns	>0.9999	105	ns	>0.9999	52	ns	>0.9999
Ancestral vs. E484Q	120	ns	>0.9999	-5.5	ns	>0.9999	135	ns	>0.9999	59	ns	>0.9999
Ancestral vs. T478I	140	ns	0.9601	-51.5	ns	>0.9999	137	ns	>0.9999	-12	ns	>0.9999
Ancestral vs. N501Y	107	ns	>0.9999	359.5	****	<0.0001	118	ns	>0.9999	28	ns	>0.9999
Ancestral vs. N403K	152	ns	0.5776	54.5	ns	>0.9999	199	ns	0.0573	-16	ns	>0.9999
Ancestral vs. L455F	173	ns	0.2192	-39	ns	>0.9999	145	ns	0.78	30	ns	>0.9999
Ancestral vs. V483A	221	*	0.0162	-29.5	ns	>0.9999	210.5	*	0.0301	131	ns	>0.9999
Ancestral vs. N501S	224	*	0.0136	-179	ns	0.1631	224.5	*	0.0132	223	*	0.0144
Ancestral vs. N439K	232.5	**	0.008	204	*	0.0434	236	**	0.0064	28	ns	>0.9999
Ancestral vs. G476S	246	**	0.0034	14	ns	>0.9999	258	**	0.0015	106.5	ns	>0.9999
Ancestral vs. Y489H	276	***	0.0004	-36.5	ns	>0.9999	305	****	<0.0001	324	****	<0.0001
Ancestral vs. Y453F	284	***	0.0002	282.5	***	0.0003	397	****	<0.0001	385	****	<0.0001
Ancestral vs. K417N	256	**	0.0017	-107.5	ns	>0.9999	357	****	<0.0001	336	****	<0.0001
Ancestral vs. A475V	311	****	<0.0001	14.5	ns	>0.9999	350	****	<0.0001	211	*	0.0292
Ancestral vs. A520S	354	****	<0.0001	-133.5	ns	>0.9999	421	****	<0.0001	381	****	<0.0001
Ancestral vs. V503F	367	****	<0.0001	6.5	ns	>0.9999	404	****	<0.0001	177	ns	0.1802
Ancestral vs. Q493L	360	****	<0.0001	301.5	****	<0.0001	404	****	<0.0001	247	**	0.0032
Ancestral vs. S477N	394	****	<0.0001	147	ns	0.7167	230	**	0.0094	51	ns	>0.9999
Ancestral vs. E484D	428	****	<0.0001	212.5	*	0.0268	339	****	<0.0001	242.5	**	0.0042
Ancestral vs. S477R	408.5	****	<0.0001	7.5	ns	>0.9999	516	****	<0.0001	450	****	<0.0001
Ancestral vs. S477I	428.5	****	<0.0001	-91	ns	>0.9999	492	****	<0.0001	415	****	<0.0001
Ancestral vs. G446V	439.5	****	<0.0001	131.5	ns	>0.9999	344	****	<0.0001	282	***	0.0003
Ancestral vs. G446S	465	****	<0.0001	187.5	ns	0.1058	440	****	<0.0001	305	****	<0.0001
Ancestral vs. E484K	490	****	<0.0001	119.5	ns	>0.9999	467	****	<0.0001	365	****	<0.0001
Ancestral vs. F490S	502	****	<0.0001	-42.5	ns	>0.9999	483	****	<0.0001	351	****	<0.0001
Ancestral vs. N501T	495	****	<0.0001	260.5	**	0.0013	507	****	<0.0001	447	****	<0.0001

Supplementary Table 4.

RBD	K_D (nM)	SD	k_{on} ($\mu\text{M}^{-1}\text{s}^{-1}$)	SD	k_{off} (s^{-1})	SD
Ancestral	29.4	2.62	0.28	0.019	0.00825	0.00016
Alpha (N501Y)	6.4	0.49	0.33	0.003	0.0021	0.00018
Beta	14.6	2.28	0.29	0.013	0.00427	0.00086
Delta	21.5	0.63	0.22	0.006	0.00480	0.00001
Gamma	15.0	1.64	0.22	0.011	0.00325	0.00052
Omicron BA2	11.0	0.03	0.39	0.02	0.00427	0.00019
K417N	34.20	5.80	0.31	0.013	0.01059	0.00226
K417T	111.50	12.02	0.16	0.011	0.01795	0.00078
G446S	46.9	3.18	0.26	0.003	0.01197	0.00097
L452R	27.36	0.08	0.20	0.004	0.00546	0.00010
L452R E484Q (Kappa)	24.81	3.77	0.23	0.019	0.00559	0.00039
Y453F	9.67	0.42	0.13	0.031	0.00125	0.00024
S477N	10.0	0.18	0.43	0.034	0.0043	0.00026
T478K	38.9	6.33	0.24	0.002	0.00922	0.00160
E484D	110.77	16.88	0.2	0.0281	0.02183	0.00024
E484K	37.2	1.56	0.24	0.001	0.00909	0.00033
E484Q	46.31	7.62	0.18	0.020	0.00834	0.0005
S494P	27.95	2.62	0.25	0.029	0.00689	0.00016
N501T	11.1	1.10	0.29	0.01	0.00318	0.00023

K_D = dissociation constant, k_{on} = association rate constant, k_{off} = dissociation rate constant
 Measured via BLI, calculated from 2 independent experiments

Supplementary Table 5.

RBD	hACE-2 variant	Conc. (nM)	K _D (nM)	SD	Ratio to WT ACE2	k _{on} (μM ⁻¹ s ⁻¹)	SD	k _{off} (s ⁻¹)	SD
Ancestral	WT	100	29.40	2.6		0.2800	0.019	0.0083	0.00016
	E35K	100	36.63	3.6	0.80	0.3013	0.007	0.0110	0.00085
	K26R	100	20.00	3.4	1.47	0.3074	0.025	0.0061	0.00054
	S19P	100	14.38	1.2	2.04	0.2844	0.002	0.0041	0.00038
Alpha (N501Y)	WT	100	6.4	0.49		0.3300	0.003	0.0021	0.00018
	E35K	100	9.23	3.71	0.69	0.3002	0.014	0.0027	0.00098
	K26R	100	4.97	1.81	1.29	0.3404	0.013	0.0017	0.00055
	S19P	100	2.93	0.90	2.19	0.3322	0.008	0.0010	0.00032
Beta	WT	100	14.60	2.3		0.2900	0.013	0.0043	0.00086
	E35K	100	72.52	29.6	0.20	0.2832	0.017	0.0203	0.00713
	K26R	100	17.49	7.9	0.84	0.3256	0.093	0.0053	0.00093
	S19P	100	10.51	0.9	1.39	0.2627	0.026	0.0028	0.00005
Delta	WT	100	21.50	0.6		0.2200	0.006	0.0048	0.00001
	E35K	100	43.34	12.1	0.50	0.3062	0.049	0.0130	0.00156
	K26R	100	13.47	2.5	1.60	0.3295	0.042	0.0044	0.00025
	S19P	100	8.56	1.4	2.51	0.3215	0.026	0.0027	0.00022
Omicron BA.2	WT	100	11.00	0.0		0.3900	0.020	0.0043	0.00019
	E35K	100	18.50	5.8	0.59	0.2817	0.018	0.0052	0.00131
	K26R	100	5.18	1.6	2.12	0.6210	0.075	0.0033	0.00139
	S19P	100	4.97	1.2	2.21	0.5631	0.077	0.0028	0.00106

Measured via BLI, calculated from 2 independent experiments

Supplementary Table 6

Population	Ashkenazi Jewish	European (non-Finnish)	Other	Latino/Admixed American	South Asian	African/African American	European (Finnish)	East Asian
<i>K26R</i> Allele Frequency	0.01188	0.005868	0.003378	0.003249	0.001313	0.000946	0.000483	0.000067
<i>S19P</i> Allele Frequency	0	0	0.0001882	0	0	0.003323	0	0
<i>E35K</i> Allele Frequency	0	0.000012	0	0	0	0	0	0.000144

Polymorphism data collated from Genome Aggregation Database (gnomAD v2.1.1; <https://gnomad.broadinstitute.org>)