

Supplemental Table 1: Demographic, social, comorbidity, and clinical characteristics of individuals with and without Post-Acute Sequelae of SARS-CoV-2 infection (PASC) from the TriNetX cohort.

	PASC (N = 70,648) ¹	Non-PASC (N = 561,035) ¹	OR (95% CI)
Age Categories (years):			
>= 65	17,824 (25.2)	120,577 (21.5)	<i>Reference Category</i>
40 to 64	31,870 (45.1)	237,924 (42.4)	0.70 (0.69, 0.72)
18 to 39	20,954 (29.7)	14,938 (31.6)	0.91 (0.89, 0.92)
Females:	44,501 (63.0)	202,534 (36.1)	1.42 (1.40, 1.45)
Charlson Comorbidity Index Categories:			
0 to 1	41,994 (59.4)	431,234 (76.9)	<i>Reference Category</i>

2 to 4	15,927 (22.5)	79,538 (14.2)	2.06 (2.02, 2.10)
5+	12,727 (18.0)	50,263 (9.0)	
Severe COVID-19:	902 (1.3)	5,409 (1.0)	1.33 (1.24, 1.42)
Breakthrough / Vaccinated Cases	121 (0.2)	3,226 (0.6)	0.30 (0.25, 0.35)
mAb Treated	1,199 (1.7)	14,462 (2.6)	0.65 (0.61, 0.69)

¹ n (%)

PASC: Post-Acute Sequelae of COVID

Supplemental Table 2: Frequencies of individual constitutional and systemic symptoms in the overall PASC group and among the vaccinated and mAb treated individuals from the TrinetX cohort.

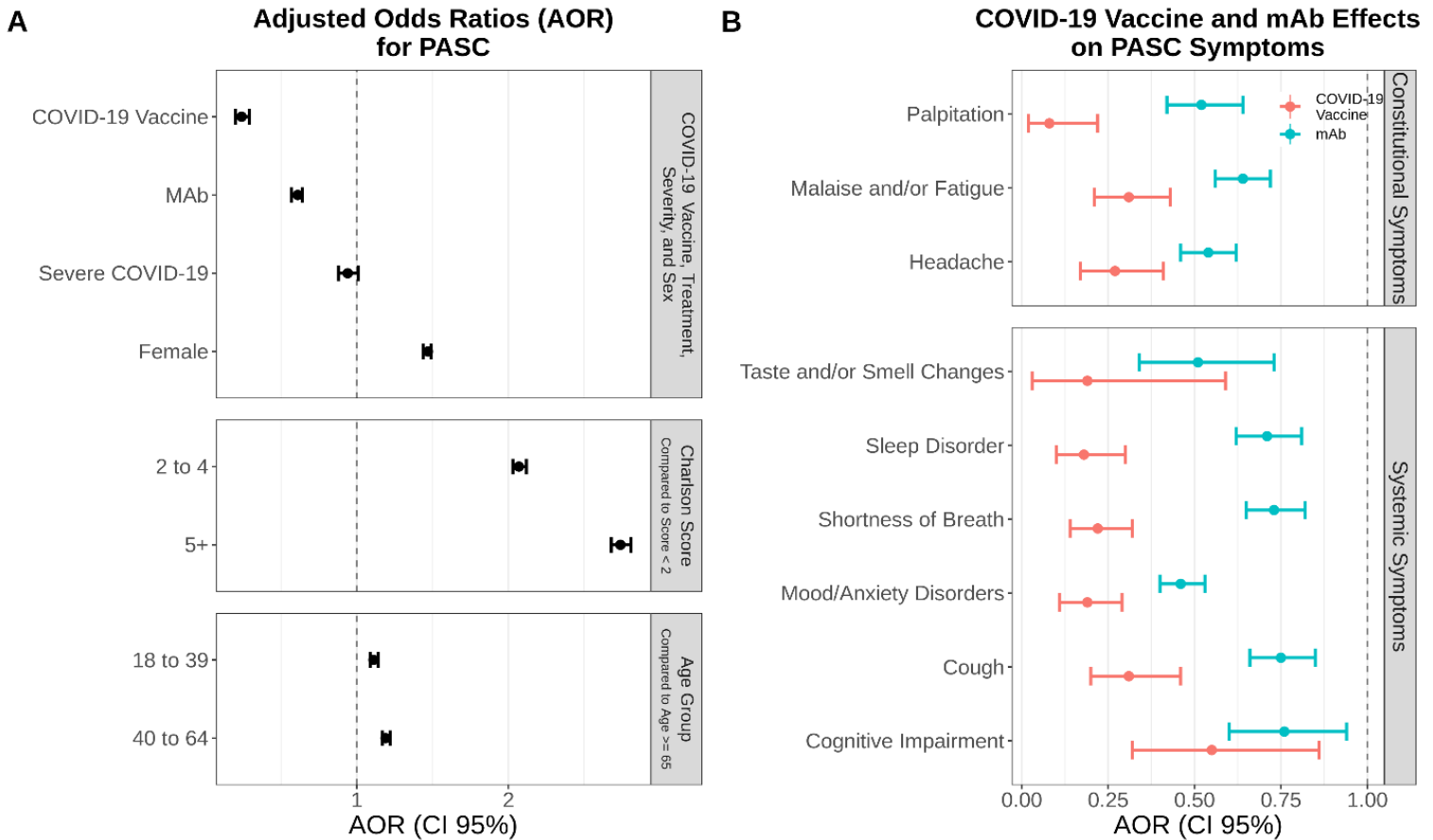
	Total PASC (N = 70,648)₁	Vaccinated PASC (N = 121)₁	mAb Treated PASC (N = 1,199)₁
Constitutional Symptoms:			
Palpitation	6,153 (8.7)	3 (2.5)	84 (7.0)
Headache	12,472 (17.7)	19 (15.7)	168 (14.0)
Malaise and/or Fatigue	14,847 (21.0)	31 (25.6)	262 (21.9)
Systemic Symptoms:			
Cough	11,976 (17.0)	23 (19.0)	235 (19.6)
Shortness of Breath	15,512 (22.0)	24 (19.8)	310 (25.9)
Taste and/or Smell Changes	2,018 (2.9)	2 (1.7)	26 (2.2)
Sleep Disorder	11,565 (16.4)	14 (11.6)	222 (18.5)

	Total PASC (N = 70,648)¹	Vaccinated PASC (N = 121)¹	mAb Treated PASC (N = 1,199)¹
Cognitive Impairment	3,535 (5.0)	16 (13.2)	83 (6.9)
Mood/Anxiety Disorders	17,254 (24.4)	18 (14.9)	203 (16.9)

Abbreviations: PASC: Post-Acute Sequelae of SARS-CoV-2 infection.

¹ n (%)

Supplemental Figure 1: Factors associated with PASC and individual PASC symptom / conditions for breakthrough and mAb treated COVID-19 survivors in replication analysis.



Supplemental Figure 1. A) Likelihood of developing PASC in replication analysis. aORs (95% CI) are shown for vaccines and mAb along with all covariates. B) aORs (CI) of developing individual PASC symptoms for vaccines (red) and mAb (blue) in the replication analysis.

PASC: Post-Acute Sequelae of SARS-CoV-2 infection; aOR: adjusted odds ratio; CI: confidence interval; mAb: monoclonal antibodies.