

Increasing SARS-CoV2 cases, hospitalizations and deaths among the vaccinated elderly populations during the Omicron (B.1.1.529) variant surge in UK.

Supplementary appendix

Contents

METHODS:.....	3
RESULTS:	4
Regression analysis SARS-CoV2 cases, hospitalizations and deaths in UK.....	4
SARS-CoV2 cases, SARS-CoV2 Hospitalizations (in England) and SARS-CoV2 deaths (England and Wales) among age groups.....	5
Vaccine effectiveness among over 50 years NIMS population in UK.....	6
Vaccine effectiveness of the third dose population prior to December 20, 2021.....	8
Public health restrictions, lockdowns and reopening in the United Kingdom (UK):	9
Figures and Tables	10
Figure S1: Regression analysis of SARS-CoV2 cases, Hospitalizations and deaths	11
Figures S2a-c: SARS-CoV2 cases, hospitalizations and deaths per 100,000 population from August 16, 2021-May 27, 2022	13
Table S1a-c: SARS-CoV2 cases and hospitalization in England, SARS-CoV2 deaths in England and Wales among age groups.....	16
Table S2: Pre-existing condition among deaths during the Omicron variant surge in England	20
Table S3a: NIMS database with vaccination status of all age groups , over 18 and 50 years of age	22
Table S3b: Vaccination status of racial ethnic minorities and vaccination status based on IMD score of the over 18 years of age	26
Table S4: Population of United Kingdom based on mid 2020 census estimate	28
Table S5: Outcomes of Confirmed Delta variant cases, Hospitalizations and deaths	29
Table S6a: SARS-CoV2 cases reported by specimen date (reported weekly for prior 4 weeks period) in NIMS-database based on vaccination status.....	32
Table S6b: SARS-CoV2 Hospitalization within 28 days of a positive test resulting in overnight inpatient admission in NIMS-database based on vaccination status.....	36
Table S6c: SARS-CoV2 deaths within 28 days of positive COVID-19 test by date of death in NIMS-database based on vaccination.....	40
Table S7a: Vaccine effectiveness of over 18 years of age NIMS population	44
Table S7b: Vaccine effectiveness of over 50 years of age confirmed Delta variant SARS-CoV2 cases reported by Public Health England	46
Table S7c: Vaccine effectiveness of over 50 years of age NIMS population	47
Table S8a-f: Proportion test of SARS-CoV2 cases, hospitalizations and deaths among NIMS vaccinated population of over 18 and over 50 years of age.....	50
REFERENCES:.....	63

METHODS:

Following is the additional details to methods that are described in details in the manuscript.

Regression analysis: Analysis of the SARS-CoV2 cases (specimen date), SARS-CoV2 hospitalizations and SARS-CoV2 deaths (date of death on the death certificate) in UK was performed as described in the Methods section of the manuscript during the Alpha, Delta and Omicron variant surge until May 1, 2022. The weekly deaths were adjusted for two weeks back to coincide with the timing of infection. During the Omicron variant surge, due to the rapid rise and decline of cases, the hospitalizations were adjusted back to one week to coincide with peaks of cases and hospitalizations.

Missing data: The UKHSA did not publish the outcomes for the SARS-CoV2 cases, hospital admissions and deaths among vaccinated population for the rolling four weeks period; November 23 to December 20, 2021 (week 48-51) and the hospital admissions among vaccinated groups for the rolling four weeks for the period January 31, 2022 to February 27, 2022 (week 5-8). However, the rolling four weeks outcomes for the prior and later weeks were available, thereby limiting the impact of missing data only to those missing week(s). The UKHSA stopped reporting the data of SARS-CoV2 cases, hospitalizations and deaths among NIMS population in the weekly vaccine surveillance reports and hence we are unable to report vaccine effectiveness or the proportionality test results from March 28-May 1, 2022 period.

Pillar 1 and 2 cases among various age groups in England for weeks 13-17 in

2022 (March 28-May 1, 2022): The National Flue and COVID-19 surveillance reports were published rolling two weekly pillar 1 (public health laboratories and hospitals) and pillar 2 (community testing) SARS-CoV2 cases among age groups from September 28, 2020 to March 27, 2022. Since March 28, 2022 only weekly pillar 1 and 2 SARS-CoV2 cases per 100,000 were published in the weekly National Flue and COVID-19 surveillance reports. We computed weekly SARS-CoV2 cases (pillar 1 and 2) among various age groups in England for the period March 28-May 1, 2022 (week 13-17) using mid-year 2020 census estimate of England and case rates (pillar 1 and 2) per 100,000 population for each age group.

RESULTS:

Regression analysis SARS-CoV2 cases, hospitalizations and deaths in UK (Figure S1): The liner regression analysis of SARS-CoV2 cases (specimen date), SARS-CoV2 hospital admissions and SARS-CoV2 deaths (data death certificate) was performed during the Alpha variant, the Delta variant surge and Omicron variant surge until May 1, 2022. During the Alpha variant surge, the increased SARS-CoV2 cases predicted increased SARS-CoV2 hospitalizations (adjusted $R^2=0.85$; slope=0.172; $p<0.001$) and increased SARS-CoV2 deaths (adjusted $R^2=0.98$; slope=0.026; $p<0.001$). The increased SARS-CoV2 cases also predicted increased SARS-CoV2 hospitalizations

and deaths during the Delta variant surge (hospitalizations; adjusted $R^2=0.68$; slope 0.019; $p<0.001$) and deaths; adjusted $R^2=0.68$; slope 0.0032; $p<0.001$) and Omicron variant surge (hospitalization; adjusted $R^2=0.22$; slope=0.005; $p=0.023$ and deaths; adjusted $R^2=0.72$; slope=0.00075; $p<0.001$).

SARS-CoV2 cases, SARS-CoV2 Hospitalizations (in England) and SARS-CoV2 deaths (England and Wales) among age groups (Figures 2a-c; Tables S1a-c):

Analysis of SARS-CoV2 cases (Figure 2a and Table S1a) in England among various age group showed significantly increased percent of SARS-CoV2 cases among <30 years (0-19 years, 20-29 years) in transition from Alpha variant surge to the initial part of Delta variant surge. During the latter part of the Delta variant surge the over 50 years of age (particularly over 70 years of age) have significantly increased cases with decreased cases among 20-29 years of age. The analysis of various age groups SARS-CoV2 hospitalizations (Figure 2b and Table S1b) showed significantly increased hospitalizations among under 55 years of age (particularly among 0-34 years of age) during the initial part of Delta variant surge; and during the latter part of Delta variant surge hospitalizations among over 55 years of age (particularly over 65 years) and during latter part of Omicron variant surge (February 28-May 1, 2022) hospitalizations among over 75 years of age significantly increased with significantly decreased hospitalization among other age groups. Analysis of deaths among various age groups in England and Wales (Figure 2c and Table S1c) showed a significantly increased Deaths among under 70 years of age (particularly among under 50 years) during Delta

variant surge until August 1, 2021 and significantly increased deaths noted among over 70 years of age and significantly decreased deaths among < 70 years of age during the latter part of Delta variant surge (August 2-December 5, 2021). Similarly, during the latter part of the Omicron variant surge (February 28-May 1, 2022) significantly increased deaths were noted among over 75 years of age and significantly decreased deaths among under 75 years of age. The significantly increased SARS-CoV2 cases during the latter part of Alpha variant surge and initial part of Delta variant surge among <50 years of age groups was associated with significantly increased deaths during the same period.

Vaccine effectiveness among over 50 years NIMS population in UK (Table S7b-c and Figure 4)

The Public Health England reported the outcomes among delta variant cases (confirmed and provisional) in the UK technical briefings until September 12, 2022. The UK vaccine surveillance reports started publishing from August 16, 2021 until March 27, 2022. As shown on Table S3, about 66.7% of the over 50 years of age NIMS population was vaccinated with two doses of primary vaccination by May 23, 2021 during the beginning of the Delta variant surge. The vaccine effectiveness of ≥ 50 years of age NIMS population vaccinated with two doses was 53.1% (95%CI 48.4%-57.2%) for the period ending June 20, 2021. Since June 21, 2021 period as shown on the Table S7b, the vaccine effectiveness declined to 18.0% - 23.2% among ≥ 50 years of age vaccinated with two doses and was in negative territory with incidence rate (IR) of cases

higher among vaccinated with two doses than unvaccinated since August 16, 2021 period. The vaccine effectiveness of the ≥ 50 years of age vaccinated with two doses was also in the negative territory since August 16, 2021 among four weekly running cases that were reported in the weekly vaccine surveillance reports with IR of cases among those vaccinated with two doses higher than unvaccinated. Since the rolling four weekly cases from December 20, 2021 to June 16, 2021; the vaccinated with the third dose among ≥ 50 years of age was also in the negative. The proportions test also showed that the proportion of SARS-CoV2 cases were higher among the vaccinated population than unvaccinated since August 16, 2021 among the Delta variant cases (vaccinated with two doses; $X^2= 2.9683$, $df = 1$, $p = 0.042$ and all vaccinated $X^2= 4.4235$, $df = 1$, $p\text{-value} = 0.01772$) and NIMS population of ≥ 50 years of age (two doses cases; $X^2= 708.94$, $df = 1$, $p<0.001$; all vaccinated cases; $X^2= 688.86$, $df = 1$, $p<0.001$). Since the reporting period of December 20, 2021, the over 50 years of age vaccinated with third dose have significantly higher proportion of cases ($X^2= 7987$, $df = 1$, $p<0.001$) than unvaccinated and since Jan 31, 2022 the third dose population have significantly higher proportion of cases than the two doses ($X^2= 309.3$, $df = 1$, $p<0.001$). The proportion test on the hospitalization among ≥ 50 years of age, showed vaccinated with two doses ($X^2= 678.34$, $df = 1$, $p<0.001$) have significantly higher proportion of hospitalizations than unvaccinated since December 6. The third dose population of ≥ 50 years of age ($X^2 = 5.523$, $df = 1$, $p = 0.009384$) and all vaccinated population ($X^2 = 10.468$, $df = 1$, $p<0.001$) have significantly higher proportion of hospitalizations than unvaccinated since February 28, 2022. Similarly, the proportion test on the SARS-CoV2 Deaths within 28 days of the positive test among those vaccinated with two doses

were higher than unvaccinated ($X^2 = 39.061$, $df = 1$, $p < 0.001$) since November 8, 2021 and the third dose do not have significantly higher proportion of deaths than unvaccinated as of March 27, 2022.

Analysis of the SARS-CoV2 deaths in England and Wales showed that the 97.95% of the deaths during the latter part of the Omicron variant surge occurred among ≥ 50 years of age (80.07%) of deaths ≥ 75 years of age. The pre-existing conditions were present in 95.6% of deaths among all ages and 96.2% of deaths ≥ 60 years of age during the Omicron variant surge in England. The deaths among elderly vaccinated population has to be considered in the context of advanced age among with pre-existing conditions.

Vaccine effectiveness of the third dose population prior to December 20, 2021:

Since the third dose vaccination approval in September 2021, about 77.3% of the ≥ 50 years of age NIMS population were vaccinated with the third dose by December 19, 2021. The UKHSA did not report third dose outcomes until December 20, 2021 in their weekly reports. In our study, we analyzed the 999,064 pillar 2 cases among over 18 years old reported from an UKHSA publication with 336,046 cases among the third dose (booster); 484,742 among the two doses and 137,478 cases among unvaccinated¹. Using the third dose weekly vaccinated population between December 26, 2021; January 2, 2022 and January 9, 2022, the best vaccine effectiveness for the third dose was 13.8%; 18.4% and 22.2%, respectively. During the same period (November 27, 2021-January 12, 2022) the England reported 52,369 SARS-CoV2 hospitalizations and 4,101 COVID-19 deaths among over 18 years of age^{2,3}.

Public health restrictions, lockdowns and reopening in the United Kingdom (UK): The UK instituted the first lockdown during the beginning of the pandemic on March 23, 2020. The second lockdown (October 30, 2020) and the third lockdown (December 22, 2020) were instituted during the second wave and the surge in cases during the Alpha variant surge.

The phased easing of restriction in UK started with reopening of the schools and colleges effective March 8, 2021 (week 10). The step 2 of the reopening became effective since April 12, 2021 and step 3 of the reopening since May 17, 2021 and by May 2021 the outdoor social contact were to be removed, two households or six people were allowed to meet indoors, and indoor hospitality services were provided and hotels were opened⁴⁻⁷. The UK government announced that most restrictions including face masks mandates, social distancing measures and capacity limitations in venues were lifted in England by July 19, 2021 and these were replaced by recommendations^{6,7}.

Figures and Tables

Figure S1: Regression analysis of SARS-CoV2 cases, Hospitalizations and deaths

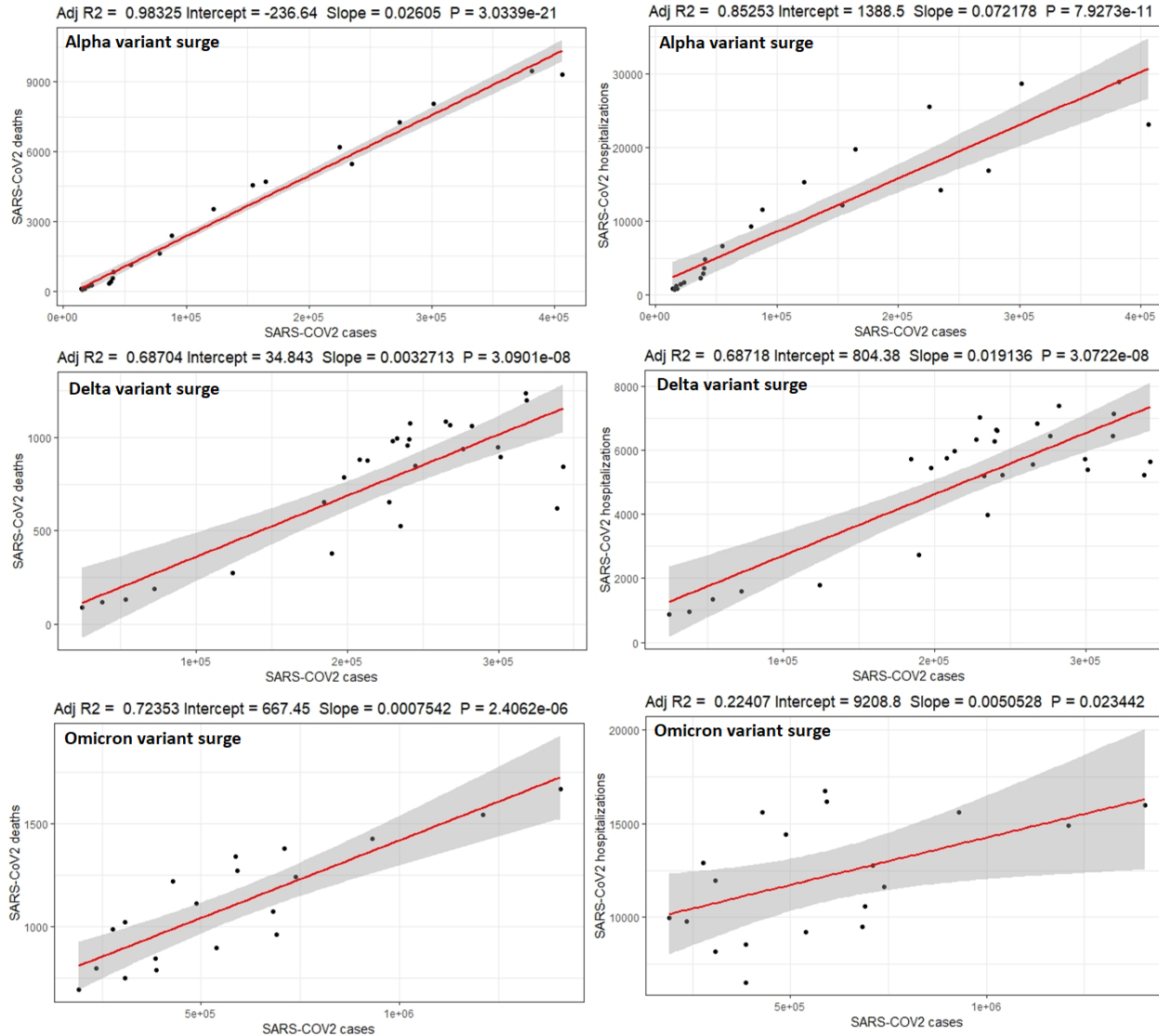


Figure S1: Regression analysis of SARS-CoV2 cases, Hospitalizations and deaths (death certificate) during the Alpha variant, Delta variant and Omicron variant surges.

Figures S2a-c: SARS-CoV2 cases, hospitalizations and deaths per 100,000 population from August 16, 2021-May 27, 2022

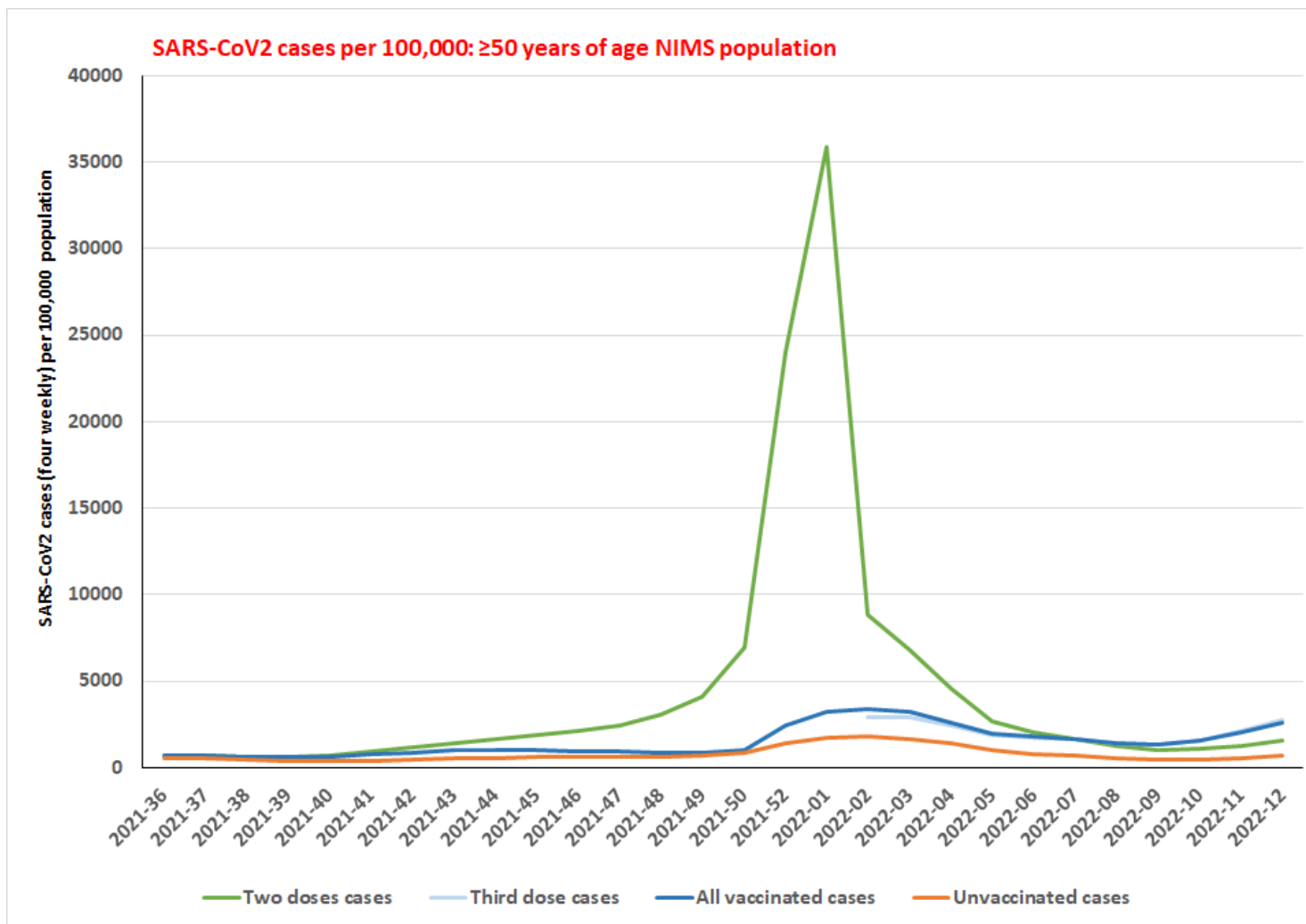


Figure S2a: SARS-CoV2 cases per 100,000 population among over 50 years of age group from August 16, 2021 to March 27, 2022.

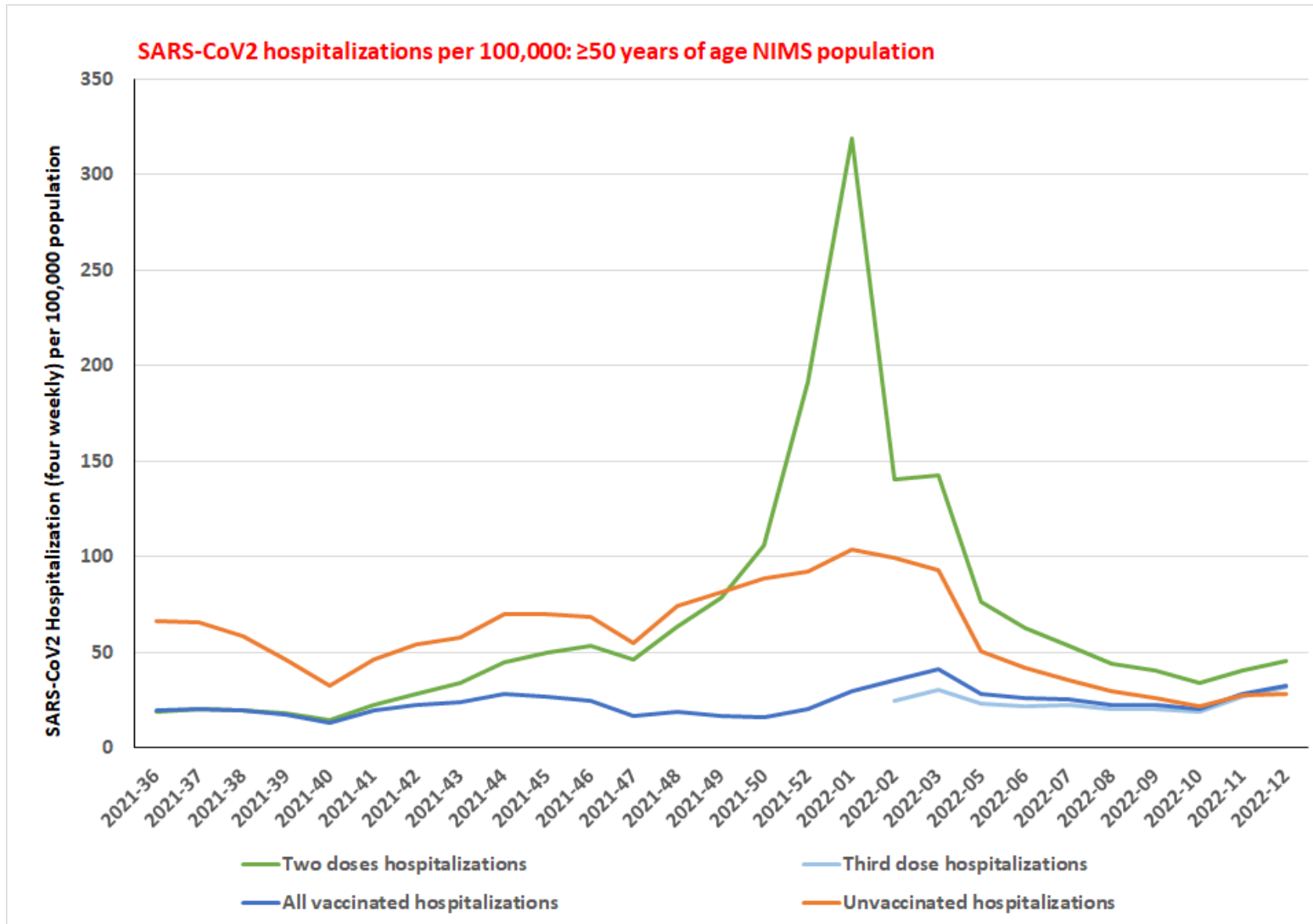


Figure S2b: SARS-CoV2 hospitalizations per 100,000 population among over 50 years of age group from August 16, 2021 to March 27, 2022.

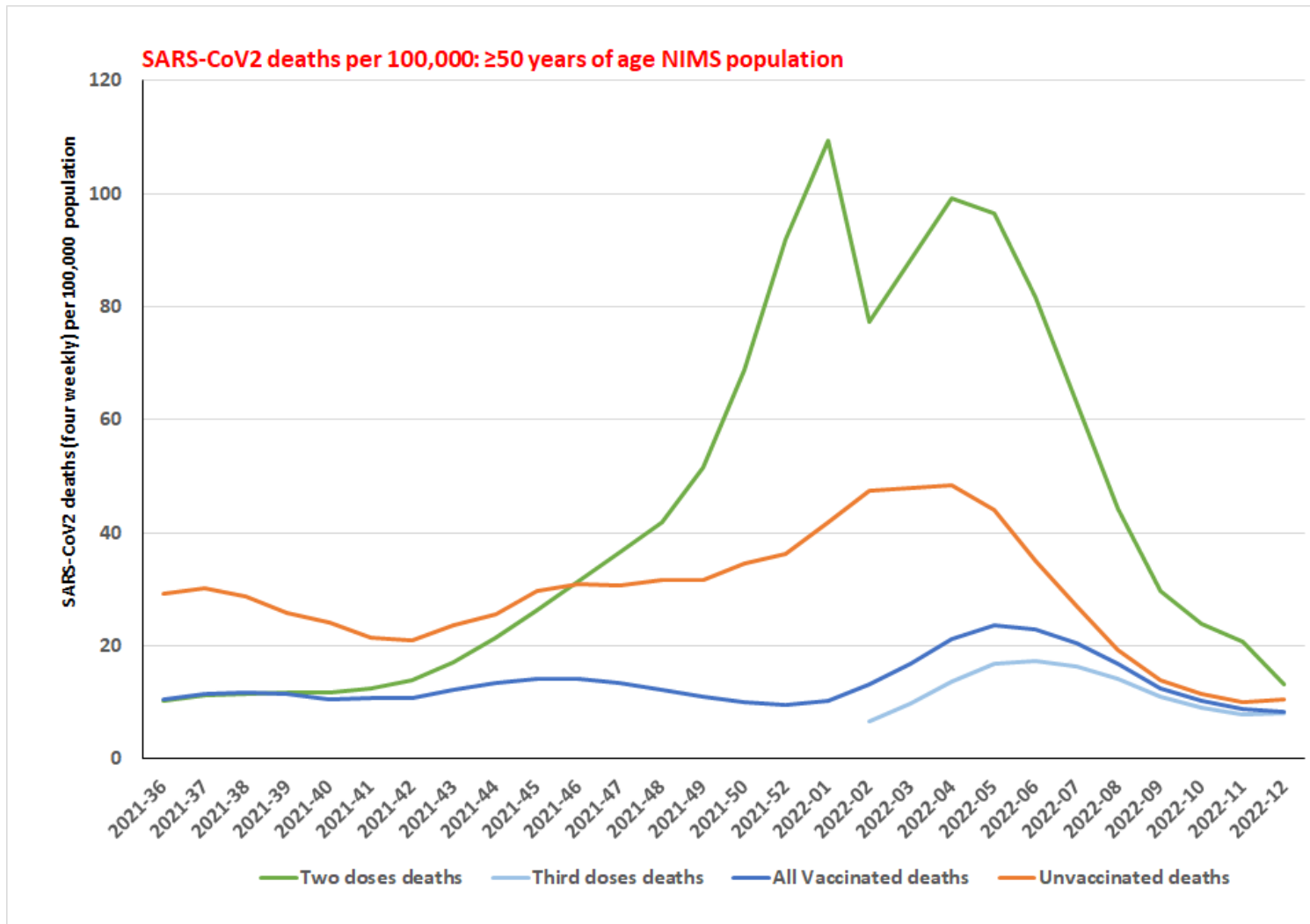


Figure S2c: SARS-CoV2 deaths per 100,000 population among over 50 years of age group from August 16, 2021 to March 27, 2022.

Table S1a-c: SARS-CoV2 cases and hospitalization in England, SARS-CoV2 deaths in England and Wales among age groups

	Pre-Alpha	Alpha variant surge		Delta variant surge		Omicron variant surge	
Time period	Sept 28, 2020- Dec 6, 2020	Dec 7,2020-Feb 28, 2021	Mar 1, 2021-May 23, 2021	May 24, 2021-Aug 1, 2021	Aug 2, 2021-Dec 5, 2021	Dec 6, 2021-Feb 27, 2022	Feb 28, 2022-May 1, 2022
COVID-19 cases; All ages (n=)	1,055,142	2,074,606	235,582	1,243,075	3,721,600	5,459,340	2,460,597
0-19 yrs (n=%)	190,310 (18.0%)	289,018 (13.9%)	65,475 (27.8%)	368,060 (29.6%)	1,395,180 (37.5%)	1,380,507 (25.3%)	345,279 (14.0%)
20-29 yrs (n=%)	201,561 (19.1%)	380,818 (18.4%)	39,470 (16.8%)	353,755 (28.5%)	418,792 (11.3%)	913,345 (16.7%)	300,745 (12.2%)
30-49 yrs (n=%)	332,709 (31.5%)	728,813 (35.1%)	81,706 (34.7%)	355,519 (28.6%)	1,091,029 (29.3%)	1,873,509 (34.3%)	823,063 (22.4%)
50-69 yrs (n=%)	238,349 (22.6%)	487,939 (23.5%)	38,921 (16.5%)	138,527 (11.1%)	655,025 (17.6%)	994,954 (18.2%)	687,604 (27.9%)
≥50 yrs (n=%)	330,562 (31.3%)	675,957 (32.6%)	48,931 (20.8%)	165,741 (13.3%)	816,599 (21.9%)	1,291,979 (23.7%)	991,510 (40.3%)
≥70 yrs (n=%)	92,213 (8.7%)	188,018 (9.1%)	10,010 (4.2%)	27,214 (2.2%)	161,574 (4.3%)	297,025 (5.4%)	303,905 (12.4%)
≥80 yrs (n=%)	46,640 (4.4%)	101,056 (4.9%)	4,845 (2.1%)	8,910 (0.7%)	48,156 (1.3%)	110,302 (2.0%)	115,288 (4.7%)
Statistical analysis		(Δ) from prior period	(Δ) from prior period	(Δ) from prior period	(Δ) from prior period	(Δ) from prior period	(Δ) from prior period
0-19 yrs [RR (95%CI); p value]		0.77 (0.77-0.78); p<0.001	2.00 (1.98-2.01); p<0.001	1.07 (1.06-1.07); p<0.001	1.27 (1.26-1.27); p<0.001	0.67 (0.67-0.68); p<0.001	0.55 (0.55-0.56); p<0.001
20-29 yrs [RR (95%CI); p value]		0.96 (0.96-0.97); p<0.001	0.91 (0.90-0.92); p<0.001	1.70 (1.68-1.71); p<0.001	0.40 (0.39-0.40); p<0.001	1.48 (1.48-1.49); p<0.001	0.73 (0.72-0.73); p<0.001
30-49 yrs [RR (95%CI); p value]		1.11 (1.11-1.12); p<0.001	0.99 (0.98-0.99); p<0.001	0.82 (0.82-0.83); p<0.001	1.03 (1.02-1.03); p<0.001	1.17 (1.168-1.172); p<0.001	0.97 (0.97-0.98); p<0.001
50-69 yrs [RR (95%CI); p value]		1.04 (1.04-1.05); p<0.001	0.70 (0.69-0.71); p<0.001	0.67 (0.66-0.68); p<0.001	1.58 (1.57-1.59); p<0.001	1.03 (1.03-1.04); p<0.001	1.53 (1.52-1.54); p<0.001
≥50 years [RR (95%CI); p value]		1.04 (1.03-1.04); p<0.001	0.64 (0.63-0.64); p<0.001	0.64 (0.63-0.65); p<0.001	1.65 (1.63-1.65); p<0.001	1.07 (1.07-1.08); p<0.001	1.70 (1.70-1.71); p<0.001
≥70 yrs [RR (95%CI); p value]		1.04 (1.03-1.04); p<0.001	0.47 (0.46-0.48); p<0.001	0.52 (0.50-0.53); p<0.001	1.98 (1.95-2.01); p<0.001	1.25 (1.24-1.26); p<0.001	2.27 (2.26-2.28); p<0.001
≥80 yrs [RR (95%CI); p value]		1.10 (1.09-1.11); p<0.001	0.42 (0.41-0.43); p<0.001	0.35 (0.37-0.36); p<0.001	1.81 (1.76-1.85); p<0.001	1.56 (1.54-1.58); p<0.001	2.32 (2.30-2.34); p<0.001

Table S1a: SARS-CoV2 cases in England among age groups in between September 28, 2020 to May 1, 2022.

	Pre-Alpha	Alpha variant surge		Delta variant surge		Omicron variant surge	
Time period	Oct 12, 2020-Dec 6, 2020	Dec 7, 2020-Feb 28, 2021	Mar 1, 2021-May 23, 2021	May 24-Aug 1, 2021	Aug 2-Dec 5, 2021	Dec 6,2021-Feb 27,2022	Feb 28-May 1, 2022
COVID-19 Hospitalizations; All ages (n=)	65,419	179,599	17,295	24,880	87,823	106,834	95,278
0-17 yrs (n=%)	952 (1.5%)	2,496 (1.4%)	599 (3.5%)	1,602 (6.4%)	4,779 (5.4%)	7,396 (6.9%)	4,971 (5.2%)
18-34 yrs (n=%)	3,440 (5.3%)	9,942 (5.5%)	1,924 (11.1%)	5,784 (23.2%)	9,994 (11.4%)	13,775 (12.9%)	7,933 (8.3%)
35-54 yrs (n=%)	8,970 (13.7%)	29,483 (16.4%)	3,759 (21.7%)	6,831 (27.5%)	18,847 (21.5%)	16,710 (15.6%)	10,362 (10.9%)
55-64 yrs (n=%)	8,669 (13.3%)	28,208 (15.7%)	2,697 (15.6%)	3,028 (12.2%)	12,189 (13.9%)	11,580 (10.8%)	9,210 (9.7%)
65-74 yrs (n=%)	12,107 (18.5%)	32,426 (18.1%)	2,540 (14.7%)	2,770 (11.1%)	14,944 (17.0%)	15,466 (14.5%)	14,794 (15.5%)
≥75 yrs (n=%)	30,586 (46.8%)	76,831 (42.8%)	5,761 (33.3%)	4,806 (19.3%)	27,047 (30.8%)	41,875 (39.2%)	47,970 (50.3%)
Statistical analysis		(Δ) from prior period	(Δ) from prior period	(Δ) from prior period	(Δ) from prior period	(Δ) from prior period	(Δ) from prior period
0-17 yrs [RR (95% CI); p value]		0.96 (0.88-1.02); p<0.223	2.49 (2.28-2.72); p<0.001	1.86 (1.70-2.03); p<0.001	0.85 (0.80-0.89); p<0.001	1.27 (1.22-1.31); p<0.001	0.75 (0.72-0.78); p<0.001
18-34 yrs [RR (95% CI); p value]		1.05 (1.01-1.09); p=0.007	2.01 (1.91-2.10); p<0.001	2.09 (1.99-2.19); p<0.001	0.49 (0.47-0.50); p<0.001	1.13 (1.10-1.16); p<0.001	0.65 (0.62-0.66); p<0.001
35-54 yrs [RR (95% CI); p value]		1.20 (1.17-1.22); p<0.001	1.32 (1.28-1.36); p<0.001	1.26 (1.22-1.31); p<0.001	0.78 (0.76-0.80); p<0.001	0.73 (0.71-0.74); p<0.001	0.70 (0.67-0.71); p<0.001
55-64 yrs [RR (95% CI); p value]		1.19 (1.16-1.21); p<0.001	0.99 (0.95-1.03); p=0.699	0.78 (0.74-0.82); p<0.001	1.14 (1.10-1.18); p<0.001	0.78 (0.76-0.80); p<0.001	0.89 (0.86-0.91); p<0.001
65-74 yrs [RR (95% CI); p value]		0.98 (0.95-0.99); p=0.010	0.81 (0.78-0.84); p<0.001	0.76 (0.72-0.80); p<0.001	1.53 (1.47-1.59); p<0.001	0.85 (0.83-0.87); p<0.001	1.07 (1.05-1.09); p<0.001
≥75 yrs [RR (95% CI); p value]		0.92 (0.90-0.92); p<0.001	0.78 (0.76-0.80); p<0.001	0.58 (0.56-0.60); p<0.001	1.59 (1.55-1.64); p<0.001	1.27 (1.25-1.29); p<0.001	1.28 (1.27-1.30); p<0.001

Table S1b: SARS-CoV2 hospitalizations in England among age groups in between September 28, 2020 to May 1, 2022.

	First wave	Pre-alfa	Alpha variant surge		Delta variant surge		Omicron variant surge	
Study period	Feb 24-Aug 16, 2020	Aug 17-Dec 6, 2020	Dec 7,2020-Feb 28, 2021	Mar 1, 2021-May 23, 2021	May 24, 2021-Aug 1, 2021	Aug 2, 2021-Dec 5, 2021	Dec 6, 2021-Feb 27, 2022	Feb 28, 2022-May 1, 2022
COVID-19 deaths, all ages (n=)	52,410	19,082	63,118	7,281	1,719	13,980	12,063	7,787
0-19 yrs (n= %)	15 (0.03%)	2 (0.01%)	16 (0.03%)	4 (0.05%)	6 (0.35%)	33 (0.24%)	27 (0.22%)	12 (0.15%)
20-29 yrs (n= %)	76 (0.15%)	21 (0.11%)	74 (0.12%)	16 (0.22%)	14 (0.81%)	51 (0.36%)	35 (0.29%)	14 (0.18%)
30-49 yrs (n= %)	886 (1.69%)	266 (1.39%)	1,153 (1.83%)	241 (3.31%)	114 (6.63%)	611 (4.37%)	399 (3.31%)	118 (1.52%)
50-69 yrs (n= %)	7,468 (14.25%)	2,600 (13.63%)	9,887 (15.66%)	1,785 (24.52%)	468 (27.23%)	3,302 (23.62%)	2,241 (18.58%)	793 (10.18%)
70-74 yrs (n= %)	4,817 (9.19%)	1,956 (10.25%)	6,077 (9.63%)	708 (9.72%)	166 (9.66%)	1,619 (11.58%)	1,933 (16.02%)	599 (7.69%)
≥ 50 yrs (n= %)	51345 (97.97%)	18,765 (98.34%)	61,771 (97.87%)	6,987 (95.96%)	1,570 (91.33%)	13,215 (94.53%)	11,546 (95.71%)	7,627 (97.95%)
≥ 75 yrs (n= %)	39060 (74.53%)	14,209 (74.46%)	45,807 (72.57%)	4,494 (61.72%)	936 (54.45%)	8,294 (59.33%)	8,189 (67.89%)	6,235 (80.07%)
Statistical analysis		(Δ) from prior period	(Δ) from prior period	(Δ) from prior period	(Δ) from prior period	(Δ) from prior period	(Δ) from prior period	(Δ) from prior period
0-19 yrs [RR (95% CI); p value]		0.36 (0.08-1.60); p=0.182	2.42 (0.55-10.51); p=0.238	2.17 (0.72-6.48); p=0.166	6.35 (1.79-22.49); p=0.004	0.68 (0.28-1.61); p=0.377	0.95 (0.57-1.58); p=0.837	0.69 (0.35-1.36); p=0.281
20-29 yrs [RR (95% CI); p value]		0.75 (0.46-1.23); p=0.263	1.07 (0.66-1.73); p=0.797	1.87 (1.09-3.22); p=0.022	3.71 (1.81-7.57); p=0.0003	0.45 (0.24-0.80); p=0.007	0.80 (0.51-1.22); p=0.296	0.62 (0.33-1.15); p=0.130
30-49 yrs [RR (95% CI); p value]		0.82 (0.72-0.944); p=0.005	1.31 (1.15-1.49); p=0.001	1.81 (1.58-2.08); p<0.001	2.00 (1.61-2.49); p<0.001	0.66 (0.54-0.80); p<0.001	0.76 (0.66-0.86); p<0.001	0.46 (0.37-0.56); p<0.001
50-69 yrs [RR (95% CI); p value]		0.96 (0.92-0.99); p=0.034	1.15 (1.10-1.12); p<0.001	1.57 (1.49-1.64); p<0.001	1.11 (1.02-1.21); p=0.018	0.87 (0.79-0.94); p=0.001	0.79 (0.75-0.82); p<0.001	0.41 (0.38-0.45); p<0.001
70-74 yrs [RR (95% CI); p value]		1.11 (1.06-1.17); p<0.001	0.94 (0.89-0.98); p=0.011	1.01 (0.93-1.09); p=0.792	0.99 (0.84-1.17); p=0.932	1.20 (1.03-1.39); p=0.019	1.38 (1.30-1.47); p<0.001	0.48 (0.44-0.52); p<0.001
≥ 50 yrs [RR (95% CI); p value]		1.00 (1.00-1.01); p=0.001	0.995 (0.993-0.997); p<0.001	0.98 (0.97-0.99); p<0.001	0.95 (0.93-0.97); p<0.001	1.04 (1.01-1.05); p<0.001	1.01 (1.01-1.02); p<0.001	1.02 (1.02-0.03); p<0.001
≥ 75 yrs [RR (95% CI); p value]		0.99 (0.98-1.01); p=0.860	0.97 (0.96-0.98); p<0.001	0.85 (0.83-0.87); p<0.001	0.88 (0.84-0.92); p<0.001	1.09 (1.04-1.14); p=0.001	1.14 (1.12-1.17); p<0.001	1.18 ((1.16-1.20); p<0.001

Table S1c: SARS-CoV2 deaths in England and Wales among age groups in between September 28, 2020 to May 1, 2022.

Table S2: Pre-existing condition among deaths during the Omicron variant surge in England

Pre-existing conditions during the Omicron variant surge (December 6, 2021-May 1, 2022)			
Age group (yrs)	Total SARS-COV2 deaths	Pre-existing condition	
		Present	Absent
All ages	17,142	16,387 (95.6%)	755 (4.4%)
0 - 19	39	27 (69.2%)	12 (30.8%)
20 - 39	198	164 (82.8%)	34 (17.2%)
40 - 59	1,206	1,093 (90.6%)	113 (9.4%)
60 - 79	5,803	5,537 (95.4%)	266 (4.6%)
80+	9,895	9,566 (96.7%)	329 (3.3%)
60+	15,698	15,103 (96.2%)	595 (3.8%)
Pre existing conditions during the entire pandemic			
Date introduced	Pre-existing condition	Count of all deaths since condition introduced	Deaths with pre-existing condition (n=%)
31-Mar-20	Diabetes	115,463	29,572 (25.6%)
31-Mar-20	Chronic Kidney Disease	115,463	19,548 (16.9%)
31-Mar-20	Chronic Pulmonary Disease	115,463	18,455 (16.0%)
31-Mar-20	Dementia	115,463	17,011 (14.7%)
1-May-20	Ischaemic Heart Disease	96,645	12,468 (12.9%)
31-Mar-20	Asthma	115,463	8,690 (7.5%)
31-Mar-20	Rheumatological Disorder	115,463	3,904 (3.4%)
31-Mar-20	Chronic Neurological Disorder	115,463	2,934 (2.5%)
24-Mar-20	Received treatment for a Mental Health condition	117,059	2,653 (2.3%)

24-Mar-20	Learning Disability and or Autism	117,059	1,397 (1.2%)
31-Mar-20	Other	115,463	84,544 (73.2%)

Table S2: Pre-existing condition among deaths during the Omicron variant surge in England

Table S3a: NIMS database with vaccination status of all age groups , over 18 and 50 years of age

week ending	All ages vaccination status; n=population (%)				≥ 18 yrs. of age vaccination status; n=population (%)				≥ 50 yrs. of age vaccination status; n=population (%)			
	2 doses (no 3 rd)	Third dose	1 dose only	Unvaccinated	2 doses (no 3 rd)	Third dose	1 dose only	Unvaccinated	2 doses (no 3 rd)	Third dose	1 dose only	Unvaccinated
3-Jan-21	29,783 (0.05%)		1,108,851 (1.8%)	61,961,296 (98.2%)	29,775 (0.1%)		1,108,534 (2.2%)	49,085,900 (97.7%)	18,145 (0.1%)		873,796 (3.9%)	21,607,893 (96.0%)
10-Jan-21	402,102 (0.6%)		1,661,407 (2.6%)	61,036,379 (96.7%)	402,058 (0.8%)		1,660,718 (3.3%)	48,161,391 (95.9%)	354,641 (1.6%)		1,207,864 (5.4%)	20,937,311 (93.1%)
17-Jan-21	442,698 (0.7%)		3,174,888 (5.0%)	59,482,270 (94.3%)	442,647 (0.9%)		3,173,666 (6.3%)	46,607,822 (92.8%)	384,361 (1.7%)		2,349,075 (10.4%)	19,766,359 (87.9%)
24-Jan-21	450,064 (0.7%)		5,359,396 (8.5%)	57,290,372 (90.8%)	450,010 (0.9%)		5,357,481 (10.7%)	44,416,620 (88.4%)	388,937 (1.7%)		4,123,495 (18.3%)	17,987,350 (79.9%)
31-Jan-21	460,029 (0.7%)		7,513,401 (11.9%)	55,126,358 (87.4%)	459,963 (0.9%)		7,510,529 (15.0%)	42,253,575 (84.1%)	394,382 (1.8%)		5,924,604 (26.3%)	16,180,765 (71.9%)
7-Feb-21	470,877 (0.7%)		9,874,536 (15.6%)	52,754,344 (83.6%)	470,811 (0.9%)		9,870,576 (19.7%)	39,882,649 (79.4%)	400,108 (1.8%)		7,960,696 (35.4%)	14,138,919 (62.8%)
14-Feb-21	490,579 (0.8%)		12,141,763 (19.2%)	50,467,364 (80.0%)	490,500 (1.0%)		12,136,095 (24.2%)	37,597,390 (74.9%)	411,497 (1.8%)		9,906,334 (44.0%)	12,181,858 (54.1%)
21-Feb-21	515,699 (0.8%)		14,167,952 (22.5%)	48,416,011 (76.7%)	515,602 (1.0%)		14,157,869 (28.2%)	35,550,470 (70.8%)	425,363 (1.9%)		11,453,744 (50.9%)	10,620,547 (47.2%)
28-Feb-21	606,844 (1.0%)		16,326,976 (25.9%)	46,165,791 (73.2%)	606,671 (1.2%)		16,307,128 (32.5%)	33,310,091 (66.3%)	477,899 (2.1%)		12,897,769 (57.3%)	9,123,957 (40.6%)
7-Mar-21	804,235 (1.3%)		17,915,499 (28.4%)	44,379,802 (70.3%)	803,960 (1.6%)		17,892,589 (35.6%)	31,527,266 (62.8%)	619,281 (2.8%)		13,951,393 (62.0%)	7,928,897 (35.2%)
14-Mar-21	1,117,297 (1.8%)		19,298,912 (30.6%)	42,683,207 (67.6%)	1,116,884 (2.2%)		19,272,701 (38.4%)	29,834,110 (59.4%)	837,736 (3.7%)		14,951,636 (66.5%)	6,710,129 (29.8%)
21-Mar-21	1,612,580 (2.6%)		21,881,719 (34.7%)	39,604,914 (62.8%)	1,611,856 (3.2%)		21,852,258 (43.5%)	26,759,378 (53.3%)	1,168,952 (5.2%)		16,952,088 (75.3%)	4,378,368 (19.5%)
28-Mar-21	2,799,963 (4.4%)		22,724,932 (36.0%)	37,574,058 (59.5%)	2,798,602 (5.6%)		22,689,611 (45.2%)	24,735,019 (49.2%)	2,061,993 (9.2%)		17,281,497 (76.8%)	3,155,746 (14.0%)
4-Apr-21	4,323,280 (6.9%)		22,014,103 (34.9%)	36,761,369 (58.3%)	4,321,262 (8.6%)		21,975,777 (43.8%)	23,925,992 (47.6%)	3,275,787 (14.6%)		16,413,863 (73.0%)	2,809,437 (12.5%)
11-Apr-21	6,297,786 (10.0%)		20,384,850 (32.3%)	36,415,884 (57.7%)	6,294,836 (12.5%)		20,344,816 (40.5%)	23,583,147 (47.0%)	4,894,124 (21.8%)		14,902,291 (66.2%)	2,702,514 (12.0%)

18-Apr-21	8,436,940 (13.4%)		18,769,54 4 (29.7%)	35,891,780 (56.9%)	8,432,628 (16.8%)		18,728,62 8 (37.3%)	23,061,287 (45.9%)	6,685,917 (29.7%)		13,190,927 (58.6%)	2,621,896 (11.7%)
25-Apr-21	10,680,33 7 (16.9%)		17,186,76 4 (27.2%)	35,230,749 (55.8%)	10,674,31 2 (21.3%)		17,145,97 9 (34.1%)	22,401,838 (44.6%)	8,595,553 (38.2%)		11,356,042 (50.5%)	2,546,853 (11.3%)
2-May-21	12,822,57 7 (20.3%)		15,718,25 2 (24.9%)	34,556,605 (54.8%)	12,814,31 2 (25.5%)		15,678,22 8 (31.2%)	21,729,174 (43.3%)	10,380,47 9 (46.1%)		9,621,020 (42.8%)	2,496,624 (11.1%)
9-May-21	14,872,85 2 (23.6%)		14,359,97 0 (22.8%)	33,864,269 (53.7%)	14,859,44 6 (29.6%)		14,323,50 4 (28.5%)	21,038,422 (41.9%)	11,930,95 2 (53.0%)		8,108,973 (36.0%)	2,457,945 (10.9%)
16-May-21	17,003,35 2 (26.9%)		13,255,20 7 (21.0%)	32,838,081 (52.0%)	16,979,88 6 (33.8%)		13,223,27 3 (26.3%)	20,017,762 (39.9%)	13,397,39 3 (59.6%)		6,692,260 (29.7%)	2,407,916 (10.7%)
23-May-21	19,266,07 1 (30.5%)		12,201,72 8 (19.3%)	31,628,350 (50.1%)	19,238,43 5 (38.3%)		12,169,33 9 (24.2%)	18,812,657 (37.5%)	15,002,86 3 (66.7%)		5,141,253 (22.9%)	2,353,113 (10.5%)
30-May-21	21,501,13 3 (34.1%)		11,106,52 1 (17.6%)	30,487,981 (48.3%)	21,469,88 3 (42.7%)		11,074,83 9 (22.1%)	17,675,195 (35.2%)	16,624,52 7 (73.9%)		3,585,879 (15.9%)	2,286,459 (10.2%)
6-Jun-21	23,480,37 7 (37.2%)		9,997,612 (15.8%)	29,617,087 (46.9%)	23,446,39 5 (46.7%)		9,964,995 (19.8%)	16,807,969 (33.5%)	17,991,86 4 (80.0%)		2,251,444 (10.0%)	2,253,174 (10.0%)
13-Jun-21	25,151,89 1 (39.9%)		9,383,450 (14.9%)	28,558,988 (45.3%)	25,113,93 5 (50.0%)		9,350,595 (18.6%)	15,754,083 (31.4%)	18,951,55 7 (84.2%)		1,317,673 (5.9%)	2,226,792 (9.9%)
20-Jun-21	26,287,67 9 (41.7%)		9,504,211 (15.1%)	27,301,589 (43.3%)	26,246,20 1 (52.3%)		9,469,778 (18.9%)	14,501,789 (28.9%)	19,393,71 9 (86.2%)		900,099 (4.0%)	2,201,669 (9.8%)
27-Jun-21	27,168,99 8 (43.1%)		9,798,677 (15.5%)	26,124,962 (41.4%)	27,124,12 1 (54.0%)		9,763,129 (19.4%)	13,329,676 (26.5%)	19,567,59 3 (87.0%)		750,506 (3.3%)	2,176,842 (9.7%)
4-Jul-21	28,061,61 3 (44.5%)		9,648,230 (15.3%)	25,382,133 (40.2%)	28,013,51 8 (55.8%)		9,611,624 (19.1%)	12,591,124 (25.1%)	19,666,12 1 (87.4%)		671,838 (3.0%)	2,156,617 (9.6%)
11-Jul-21	28,950,15 0 (45.9%)		9,242,451 (14.6%)	24,898,854 (39.5%)	28,898,87 6 (57.5%)		9,205,675 (18.3%)	12,111,194 (24.1%)	19,739,27 9 (87.8%)		617,709 (2.7%)	2,137,378 (9.5%)
18-Jul-21	29,966,24 7 (47.5%)		8,554,088 (13.6%)	24,570,647 (38.9%)	29,911,28 7 (59.6%)		8,517,418 (17.0%)	11,786,568 (23.5%)	19,798,53 6 (88.0%)		575,609 (2.6%)	2,120,034 (9.4%)
25-Jul-21	30,932,50 4 (49.0%)		7,821,016 (12.4%)	24,336,996 (38.6%)	30,874,69 1 (61.5%)		7,783,137 (15.5%)	11,556,979 (23.0%)	19,843,30 3 (88.2%)		543,956 (2.4%)	2,106,761 (9.4%)
1-Aug-21	31,852,32 1 (50.5%)		7,098,507 (11.2%)	24,139,246 (38.3%)	31,791,04 8 (63.3%)		7,058,043 (14.1%)	11,365,276 (22.6%)	19,883,63 6 (88.4%)		515,571 (2.3%)	2,094,646 (9.3%)
8-Aug-21	32,756,02 4 (51.9%)		6,373,113 (10.1%)	23,960,443 (38.0%)	32,691,19 9 (65.1%)		6,320,771 (12.6%)	11,201,905 (22.3%)	19,916,77 8 (88.5%)		493,433 (2.2%)	2,083,467 (9.3%)
15-Aug-21	33,727,54 5 (53.5%)		5,611,293 (8.9%)	23,750,160 (37.6%)	33,659,12 0 (67.0%)		5,490,998 (10.9%)	11,063,176 (22.0%)	19,944,74 8 (88.7%)		475,305 (2.1%)	2,073,405 (9.2%)
22-Aug-21	34,687,26 9 (55.0%)		4,942,094 (7.8%)	23,459,028 (37.2%)	34,615,29 2 (68.9%)		4,655,978 (9.3%)	10,941,417 (21.8%)	19,969,18 7 (88.8%)		459,499 (2.0%)	2,064,546 (9.2%)

29-Aug-21	35,479,76 3 (56.2%)		4,423,944 (7.0%)	23,184,181 (36.7%)	35,404,65 8 (70.5%)		3,972,304 (7.9%)	10,835,225 (21.6%)	19,992,04 3 (88.9%)		444,528 (2.0%)	2,056,504 (9.1%)
5-Sep-21	36,118,11 8 (57.2%)	12,738 (0.02%)	3,977,545 (6.3%)	22,991,593 (36.4%)	36,039,89 5 (71.8%)	12,713 (0.03%)	3,428,983 (6.8%)	10,742,682 (21.4%)	20,008,54 1 (88.9%)	7,045 (0.03%)	434,345 (1.9%)	2,049,929 (9.1%)
12-Sep-21	36,632,60 6 (58.1%)	14,276 (0.02%)	3,593,049 (5.7%)	22,860,063 (36.2%)	36,551,52 9 (72.8%)	14,248 (0.03%)	3,005,016 (6.0%)	10,653,480 (21.2%)	20,024,67 2 (89.0%)	7,995 (0.04%)	423,866 (1.9%)	2,043,327 (9.1%)
19-Sep-21	36,984,09 0 (58.6%)	43,185 (0.1%)	3,326,622 (5.3%)	22,746,097 (36.0%)	36,899,86 5 (73.5%)	43,126 (0.1%)	2,709,140 (5.4%)	10,572,142 (21.0%)	20,018,49 2 (89.0%)	30,591 (0.1%)	414,203 (1.8%)	2,036,574 (9.1%)
26-Sep-21	36,865,26 6 (58.4%)	432,235 (0.7%)	3,178,256 (5.0%)	22,624,237 (35.9%)	36,777,08 2 (73.2%)	432,070 (0.9%)	2,518,065 (5.0%)	10,497,056 (20.9%)	19,709,29 5 (87.6%)	357,852 (1.6%)	402,771 (1.8%)	2,029,942 (9.0%)
3-Oct-21	36,136,12 1 (57.3%)	1,360,104 (2.2%)	3,162,512 (5.0%)	22,441,257 (35.6%)	36,043,13 5 (71.8%)	1,359,758 (2.7%)	2,387,178 (4.8%)	10,434,202 (20.8%)	18,940,07 3 (84.2%)	1,145,668 (5.1%)	389,978 (1.7%)	2,024,141 (9.0%)
10-Oct-21	35,097,67 9 (55.6%)	2,575,568 (4.1%)	3,202,469 (5.1%)	22,224,278 (35.2%)	34,992,71 5 (69.7%)	2,574,955 (5.1%)	2,287,832 (4.6%)	10,368,771 (20.6%)	17,922,16 4 (79.7%)	2,179,876 (9.7%)	380,041 (1.7%)	2,017,779 (9.0%)
17-Oct-21	33,924,69 1 (53.8%)	3,913,065 (6.2%)	3,278,275 (5.2%)	21,983,963 (34.8%)	33,800,59 6 (67.3%)	3,912,076 (7.8%)	2,206,454 (4.4%)	10,305,147 (20.5%)	16,792,82 0 (74.6%)	3,323,957 (14.8%)	371,757 (1.7%)	2,011,326 (8.9%)
24-Oct-21	32,526,36 3 (51.5%)	5,461,045 (8.7%)	3,382,332 (5.4%)	21,730,254 (34.4%)	32,383,55 1 (64.5%)	5,459,513 (10.9%)	2,141,948 (4.3%)	10,239,261 (20.4%)	15,452,29 7 (68.7%)	4,679,006 (20.8%)	364,458 (1.6%)	2,004,099 (8.9%)
31-Oct-21	31,082,16 0 (49.3%)	7,035,752 (11.2%)	3,464,949 (5.5%)	21,517,133 (34.1%)	30,921,58 7 (61.6%)	7,033,556 (14.0%)	2,086,992 (4.2%)	10,182,138 (20.3%)	14,066,96 2 (62.5%)	6,077,670 (27.0%)	358,133 (1.6%)	1,997,095 (8.9%)
7-Nov-21	29,391,86 0 (46.6%)	8,847,251 (14.0%)	3,601,201 (5.7%)	21,259,682 (33.7%)	29,217,61 3 (58.2%)	8,844,063 (17.6%)	2,034,479 (4.1%)	10,128,118 (20.2%)	12,477,51 5 (55.5%)	7,680,221 (34.1%)	352,272 (1.6%)	1,989,852 (8.8%)
14-Nov-21	27,527,38 2 (43.6%)	10,841,33 7 (17.2%)	3,684,054 (5.8%)	21,047,221 (33.4%)	27,339,40 3 (54.4%)	10,836,40 3 (21.6%)	1,977,027 (3.9%)	10,071,440 (20.1%)	10,769,33 3 (47.9%)	9,403,246 (41.8%)	345,025 (1.5%)	1,982,256 (8.8%)
21-Nov-21	25,605,74 9 (40.6%)	12,884,76 4 (20.4%)	3,723,869 (5.9%)	20,885,612 (33.1%)	25,402,40 4 (50.6%)	12,877,48 8 (25.6%)	1,927,847 (3.8%)	10,016,534 (19.9%)	9,072,178 4 (40.3%)	11,116,35 2 (49.4%)	337,097 (1.5%)	1,974,233 (8.8%)
28-Nov-21	23,621,27 5 (37.4%)	15,029,38 4 (23.8%)	3,695,318 (5.9%)	20,754,017 (32.9%)	23,366,74 8 (46.5%)	15,019,48 8 (29.9%)	1,876,521 (3.7%)	9,961,516 (19.8%)	7,387,515 (32.8%)	12,824,31 1 (57.0%)	321,984 (1.4%)	1,966,050 (8.7%)
5-Dec-21	21,594,19 1 (34.2%)	17,253,86 9 (27.3%)	3,632,098 (5.8%)	20,619,836 (32.7%)	21,261,36 3 (42.3%)	17,240,89 2 (34.3%)	1,824,939 (3.6%)	9,897,079 (19.7%)	5,774,535 (25.7%)	14,461,14 7 (64.3%)	307,839 (1.4%)	1,956,339 (8.7%)
12-Dec-21	19,265,73 1 (30.5%)	19,773,94 1 (31.3%)	3,566,118 (5.7%)	20,494,204 (32.5%)	18,864,31 5 (37.6%)	19,757,26 0 (39.3%)	1,774,889 (3.5%)	9,827,809 (19.6%)	4,272,802 (19.0%)	15,982,96 0 (71.0%)	298,816 (1.3%)	1,945,282 (8.6%)
19-Dec-21	14,761,02 2 (23.4%)	24,518,70 4 (38.9%)	3,513,151 (5.6%)	20,307,117 (32.2%)	14,283,11 1 (28.4%)	24,492,87 0 (48.8%)	1,735,265 (3.5%)	9,713,027 (19.3%)	2,894,226 (12.9%)	17,384,40 1 (77.3%)	293,512 (1.3%)	1,927,721 (8.6%)
26-Dec-21	12,144,70 9 (19.2%)	27,318,27 7 (43.3%)	3,467,929 (5.5%)	20,169,079 (32.0%)	11,601,91 0 (23.1%)	27,283,93 2 (54.3%)	1,712,801 (3.4%)	9,625,630 (19.2%)	2,301,915 (10.2%)	17,991,95 7 (80.0%)	290,631 (1.3%)	1,915,357 (8.5%)
2-Jan-22	10,944,96 9 (17.3%)	28,675,14 0 (45.4%)	3,432,361 (5.4%)	20,047,524 (31.8%)	10,325,49 9 (20.6%)	28,634,73 4 (57.0%)	1,706,797 (3.4%)	9,557,243 (19.0%)	2,051,827 (9.1%)	18,250,87 9 (81.1%)	290,032 (1.3%)	1,907,122 (8.5%)
9-Jan-22	9,977,945 (15.8%)	29,846,06 7 (47.3%)	3,371,664 (5.3%)	19,904,318 (31.5%)	9,255,079 (18.4%)	29,798,03 2 (59.3%)	1,691,094 (3.4%)	9,480,068 (18.9%)	1,844,119 (8.2%)	18,468,98 6 (82.1%)	288,108 (1.3%)	1,898,647 (8.4%)

16-Jan-22	9,546,563 (15.1%)	30,459,19 9 (48.3%)	3,307,547 (5.2%)	19,786,685 (31.4%)	8,725,007 (17.4%)	30,401,73 9 (60.5%)	1,684,402 (3.4%)	9,413,125 (18.7%)	1,739,053 (7.7%)	18,582,41 9 (82.6%)	286,899 (1.3%)	1,891,489 (8.4%)
23-Jan-22	9,390,117 (14.9%)	30,805,72 9 (48.8%)	3,217,300 (5.1%)	19,686,848 (31.2%)	8,454,911 (16.8%)	30,734,48 5 (61.2%)	1,677,190 (3.3%)	9,357,687 (18.6%)	1,685,346 (7.5%)	18,642,85 6 (82.9%)	285,949 (1.3%)	1,885,709 (8.4%)
30-Jan-22	9,296,619 (14.7%)	31,087,43 6 (49.3%)	3,117,686 (4.9%)	19,598,253 (31.1%)	8,243,011 (16.4%)	31,004,98 3 (61.7%)	1,668,538 (3.3%)	9,307,741 (18.5%)	1,639,123 (7.3%)	18,695,45 7 (83.1%)	284,923 (1.3%)	1,880,357 (8.4%)
6-Feb-22	9,262,440 (14.7%)	31,274,87 5 (49.6%)	3,032,392 (4.8%)	19,530,287 (31.0%)	8,110,384 (16.1%)	31,184,76 0 (62.1%)	1,654,914 (3.3%)	9,274,215 (18.5%)	1,611,069 (7.2%)	18,728,23 1 (83.2%)	283,227 (1.3%)	1,877,333 (8.3%)
13-Feb-22	9,241,569 (14.6%)	31,442,36 7 (49.8%)	2,950,014 (4.7%)	19,466,044 (30.8%)	7,995,490 (15.9%)	31,345,39 4 (62.4%)	1,634,487 (3.3%)	9,248,902 (18.4%)	1,589,530 (7.1%)	18,754,37 8 (83.4%)	280,876 (1.2%)	1,875,076 (8.3%)
20-Feb-22	9,209,801 (14.6%)	31,581,86 4 (50.1%)	2,892,982 (4.6%)	19,415,347 (30.8%)	7,902,747 (15.7%)	31,476,58 4 (62.7%)	1,615,652 (3.2%)	9,229,290 (18.4%)	1,572,678 (7.0%)	18,775,25 9 (83.4%)	278,643 (1.2%)	1,873,280 (8.3%)
27-Feb-22	9,175,261 (14.5%)	31,712,91 2 (50.3%)	2,842,449 (4.5%)	19,369,372 (30.7%)	7,824,511 (15.6%)	31,592,29 9 (62.9%)	1,598,003 (3.2%)	9,209,460 (18.3%)	1,556,155 (6.9%)	18,795,47 5 (83.5%)	276,809 (1.2%)	1,871,421 (8.3%)
6-Mar-22	9,156,404 (14.5%)	31,823,14 2 (50.4%)	2,787,551 (4.4%)	19,332,897 (30.6%)	7,767,075 (15.5%)	31,683,45 8 (63.1%)	1,580,454 (3.1%)	9,193,286 (18.3%)	1,543,289 (6.9%)	18,811,62 0 (83.6%)	274,926 (1.2%)	1,870,025 (8.3%)
13-Mar-22	9,141,789 (14.5%)	31,926,56 4 (50.6%)	2,731,039 (4.3%)	19,300,602 (30.6%)	7,717,387 (15.4%)	31,766,82 2 (63.2%)	1,561,398 (3.1%)	9,178,666 (18.3%)	1,532,248 (6.8%)	18,825,91 8 (83.7%)	272,981 (1.2%)	1,868,713 (8.3%)
20-Mar-22	9,131,054 (14.5%)	32,024,76 0 (50.8%)	2,672,836 (4.2%)	19,271,344 (30.5%)	7,672,917 (15.3%)	31,844,16 5 (63.4%)	1,541,996 (3.1%)	9,165,195 (18.2%)	1,522,702 (6.8%)	18,838,82 4 (83.7%)	270,793 (1.2%)	1,867,541 (8.3%)
27-Mar-22	9,117,101 (14.4%)	32,115,50 0 (50.9%)	2,622,602 (4.2%)	19,244,791 (30.5%)	7,629,664 (15.2%)	31,915,63 1 (63.5%)	1,525,760 (3.0%)	9,153,218 (18.2%)	1,511,149 (6.7%)	18,853,41 2 (83.8%)	269,098 (1.2%)	1,866,201 (8.3%)

Table S3a: NIMS database with vaccination status of all age groups , over 18 and 50 years of age. The weekly number of population in each vaccination group and percentage represented for each week based on the age. The total NIMS cohort of all age groups (n=63,099,994); over 18 years of age (n=50,224,273) and over 50 years of age (n=22,499,860) as of March 27, 2022.

Table S3b: Vaccination status of racial ethnic minorities and vaccination status based on IMD score of the over 18 years of age

18+ years of age Ethnicity status	Denominator	Vaccination status			
		1 dose only	2 doses only	Third dose	Unvaccinated
White - British	30,755,212	654,705 (2.1%)	3,847,492 (12.5%)	23,506,318 (76.4%)	2,746,697 (8.9%)
White - Irish	305,107	6,836 (2.2%)	32,959 (10.8%)	212,706 (69.7%)	52,606 (17.2%)
White - Other	4,364,388	117,373 (2.7%)	758,638 (17.4%)	2,011,587 (46.1%)	1,476,790 (33.8%)
Mixed - White and Black Caribbean	163,185	7,854 (4.8%)	34,452 (21.1%)	58,500 (35.8%)	62,379 (38.2%)
Mixed - White and Black African	125,836	6,193 (4.9%)	32,845 (26.1%)	50,148 (39.9%)	36,650 (29.1%)
Mixed - White and Asian	141,390	5,274 (3.7%)	26,766 (18.9%)	78,564 (55.6%)	30,786 (21.8%)
Mixed - Any other mixed background	307,921	12,813 (4.2%)	60,728 (19.7%)	148,242 (48.1%)	86,138 (28.0%)
Asian or Asian British - Indian	1,459,219	46,807 (3.2%)	268,328 (18.4%)	896,598 (61.4%)	247,486 (17.0%)
Asian or Asian British - Pakistani	1,047,413	60,910 (5.8%)	387,666 (37.0%)	366,405 (35.0%)	232,432 (22.2%)
Asian or Asian British - Bangladeshi	379,935	18,740 (4.9%)	117,464 (30.9%)	176,429 (46.4%)	67,302 (17.7%)
Asian or Asian British - Any other Asian background	885,577	36,255 (4.1%)	192,281 (21.7%)	483,804 (54.6%)	173,237 (19.6%)
Black or Black British - Caribbean	413,011	16,529 (4.0%)	79,798 (19.3%)	145,374 (35.2%)	171,310 (41.5%)
Black or Black British - African	911,671	50,450 (5.5%)	264,944 (29.1%)	317,774 (34.9%)	278,503 (30.5%)
Black or Black British - Any other Black background	346,270	18,713 (5.4%)	88,468 (25.5%)	108,548 (31.3%)	130,541 (37.7%)
Chinese	451,559	24,059 (5.3%)	52,763 (11.7%)	203,476 (45.1%)	171,261 (37.9%)
Other ethnic groups - Any other ethnic group	1,122,853	46,019 (4.1%)	238,690 (21.3%)	475,598 (42.4%)	362,546 (32.3%)
Not Stated/Unknown	6,461,320	323,991 (5.0%)	949,393 (14.7%)	2,956,131 (45.8%)	2,231,805 (34.5%)
Non-white ethnic groups (all)	12,425,335	350,616 (4.5%)	1,845,193 (23.8%)	3,509,460 (45.2%)	2,050,571 (26.4%)
18+ years of Age		Vaccination status			
IMD decile		1 dose only	2 doses only	Third dose	Unvaccinated
1 (most deprived)		231,099 (5.6%)	1,036,060 (25.2%)	2,266,843 (55.2%)	13.9%
2		206,422 (4.8%)	1,000,801 (23.2%)	2,575,207 (59.7%)	12.3%
3		192,948 (4.3%)	954,499 (21.1%)	2,853,084 (63.0%)	11.6%

4	172,467 (3.7%)	853,092 (18.5%)	3,117,666 (67.7%)	10.0%
5	144,138 (3.2%)	750,866 (16.4%)	3,289,305 (72.0%)	8.4%
6	130,418 (2.8%)	688,136 (14.9%)	3,491,214 (75.4%)	6.9%
7	110,690 (2.5%)	610,577 (13.6%)	3,539,976 (78.6%)	5.3%
8	103,928 (2.3%)	582,920 (13.0%)	3,637,946 (81.1%)	3.6%
9	86,911 (2.0%)	522,274 (11.9%)	3,672,750 (83.4%)	2.8%
10 (least deprived)	74,766 (1.7%)	440,433 (10.2%)	3,744,140 (86.7%)	1.4%

Table S3b: Vaccination status of racial ethnic minorities and vaccination status based on IMD score of the over 18 years of age NIMS population as of May 1, 2022.

Table S4: Population of United Kingdom based on mid 2020 census estimate

	United Kingdom	England and Wales	England
Total population	67,081,234	59,719,724	56,550,138
Age group			
0-19 yrs	15,658,537 (23.3%)	14,032,132 (23.5%)	13,330,355 (23.6%)
20-29 yrs	8,609,788 (12.8%)	7,658,686 (12.8%)	7,244,015 (12.8%)
30-49 yrs	17,321,585 (25.8%)	15,425,743 (25.8%)	14,677,803 (26.0%)
50-69 yrs	16,338,067 (24.4%)	14,434,809 (24.2%)	13,618,246 (24.1%)
≥50 yrs	25,491,324 (38.0%)	22,603,163 (37.8%)	21,297,965 (37.7%)
≥70 yrs	9,153,257 (13.6%)	8,168,354 (13.7%)	7,679,719 (13.6%)
≥75 yrs	5,789,351 (8.6%)	5,172,340 (8.7%)	4,865,591 (8.6%)
≥80 yrs	3,385,592 (5.0%)	3,031,325 (5.1%)	2,855,599 (5.0%)

Table S4: Population of United Kingdom based on mid 2020 census estimate. Age group distribution of population in UK, England; England and Wales.

Table S5: Outcomes of Confirmed Delta variant cases, Hospitalizations and deaths

Study period	Age (yrs)	Outcome	Total (n= % of all ages)	Unvaccinated (n=% of age group)	Vaccinated (n=% of age group)			Vaccination status unknown (n=% of age group)
					All Vaccinated	1 dose*	Two doses [†]	
Feb 1- June 20, 2021	All ages	Cases	123,620 (100%)	71,932 (58.2%)	37,329 (30.2%)	26,495 (21.4%)	10,834 (8.8%)	14,359 (11.6%)
		Hospitalizations	1,904 (100%)	1,182 (62.1%)	688 (36.1%)	375 (19.7%)	313 (16.4%)	34 (1.8%)
		Deaths	257 (100%)	92 (35.8%)	163 (63.4%)	45 (17.5%)	118 (45.9%)	2 (0.8%)
	<50 yrs	Cases	111,008 (89.8%)	70,664 (63.7%)	27,444 (24.7%)	21,844 (19.7%)	5,600 (5.0%)	12,900 (11.6%)
		Hospitalizations	1,283 (67.4%)	987 (76.9%)	272 (21.2%)	224 (17.5%)	48 (3.7%)	24 (1.9%)
		Deaths	26 (10.1%)	21 (80.8%)	5 (19.2%)	3 (11.5%)	2 (7.7%)	0 (0.0%)
	≥50 yrs	Cases	12,404 (10.0%)	1,267 (10.2%)	9,885 (79.7%)	4,651 (37.5%)	5,234 (42.2%)	1,252 (10.1%)
		Hospitalizations	615 (32.3%)	195 (31.7%)	416 (67.6%)	151 (24.6%)	265 (43.1%)	4 (0.7%)
		Deaths	231 (89.9%)	71 (30.7%)	158 (68.4%)	42 (18.2%)	116 (50.2%)	2 (0.9%)
June 21-July 18, 2021	All ages	Cases	105,598 (100%)	49,470 (46.8%)	45,535 (43.1%)	27,596 (26.1%)	17,939 (17.0%)	10,593 (10.0%)
		Hospitalizations	1,788 (100%)	970 (54.3%)	788 (44.1%)	258 (14.4%)	530 (29.6%)	30 (1.7%)
		Deaths	203 (100%)	73 (36.0%)	126 (62.1%)	20 (9.9%)	106 (52.2%)	4 (2.0%)
	<50 yrs	Cases	94,541 (89.5%)	48,399 (51.2%)	36,546 (38.7%)	26,800 (28.3%)	9,746 (10.3%)	9,586 (10.1%)
		Hospitalizations	1,044 (58.4%)	725 (69.4%)	292 (28.0%)	200 (19.2%)	92 (8.8%)	27 (2.6%)
		Deaths	19 (9.4%)	13 (68.4%)	5 (26.3%)	3 (15.8%)	2 (10.5%)	1 (5.3%)
	≥50 yrs	Cases	10,975 (10.4%)	1,070 (9.7%)	8,988 (81.9%)	795 (7.2%)	8,193 (74.7%)	917 (8.4%)
		Hospitalizations	750 (41.9%)	245 (32.7%)	496 (66.1%)	58 (7.7%)	438 (58.4%)	9 (1.2%)
		Deaths	184 (90.6%)	60 (32.6%)	121 (65.8%)	17 (9.2%)	104 (56.5%)	3 (1.6%)
July 19-Aug 1, 2021	All ages	Cases	70,792 (100%)	29,652 (41.9%)	34,251 (48.4%)	16,016 (22.6%)	18,235 (25.8%)	6,889 (9.7%)
		Hospitalizations	1,467 (100%)	808 (55.1%)	641 (43.7%)	129 (8.8%)	512 (34.9%)	18 (1.2%)
		Deaths	282 (100%)	88 (31.2%)	192 (68.1%)	14 (5.0%)	178 (63.1%)	2 (0.7%)
	<50 yrs	Cases	60,200 (85.0%)	28,549 (47.4%)	25,817 (42.9%)	15,627 (26.0%)	10,190 (16.9%)	5,834 (9.7%)

		Hospitalizations	757 (51.6%)	578 (76.4%)	169 (22.3%)	85 (11.2%)	84 (11.1%)	10 (1.3%)
		Deaths	26 (9.2%)	14 (53.8%)	11 (42.3%)	2 (7.7%)	9 (34.6%)	1 (3.8%)
	≥50 yrs	Cases	10,357 (14.6%)	1,103 (10.6%)	8,434 (81.4%)	389 (3.8%)	8,045 (77.7%)	820 (7.9%)
		Hospitalizations	709 (48.3%)	230 (32.4%)	472 (66.6%)	44 (6.2%)	428 (60.4%)	7 (1.0%)
		Deaths	255 (90.4%)	74 (29.0%)	181 (71.0%)	12 (4.7%)	169 (66.3%)	- (0.0%)
Aug 2-Aug 15, 2021	All ages	Cases	86,725 (100%)	32,079 (37.0%)	46,214 (53.3%)	19,850 (22.9%)	26,364 (30.4%)	8,432 (9.7%)
		Hospitalizations	2,126 (100%)	1,073 (50.5%)	1,036 (48.7%)	187 (8.8%)	849 (39.9%)	17 (0.8%)
		Deaths	447 (100%)	137 (30.6%)	302 (67.6%)	25 (5.6%)	277 (62.0%)	8 (1.8%)
	<50 yrs	Cases	72,085 (83.1%)	30,628 (42.5%)	34,390 (47.7%)	19,382 (26.9%)	15,008 (20.8%)	7,067 (9.8%)
		Hospitalizations	1,028 (48.4%)	754 (73.3%)	264 (25.7%)	122 (11.9%)	142 (13.8%)	10 (1.0%)
		Deaths	42 (9.4%)	24 (57.1%)	17 (40.5%)	3 (7.1%)	14 (33.3%)	1 (2.4%)
	≥50 yrs	Cases	14,528 (16.8%)	1,451 (10.0%)	11,824 (81.4%)	468 (3.2%)	11,356 (78.2%)	1,253 (8.6%)
		Hospitalizations	1,099 (51.7%)	319 (29.0%)	772 (70.2%)	65 (5.9%)	707 (64.3%)	8 (0.7%)
		Deaths	406 (90.8%)	113 (27.8%)	285 (70.2%)	22 (5.4%)	263 (64.8%)	8 (2.0%)
Aug 16-Aug 29, 2021	All ages	Cases	105,793 (100%)	36,583 (34.6%)	59,364 (56.1%)	18,913 (17.9%)	40,451 (38.2%)	9,846 (9.3%)
		Hospitalizations	2,187 (100%)	1,031 (47.1%)	1,115 (51.0%)	147 (6.7%)	968 (44.3%)	41 (1.9%)
		Deaths	609 (100%)	146 (24.0%)	450 (73.9%)	38 (6.2%)	412 (67.7%)	13 (2.1%)
	<50 yrs	Cases	82,855 (78.3%)	34,749 (41.9%)	40,176 (48.5%)	18,317 (22.1%)	21,859 (26.4%)	7,930 (9.6%)
		Hospitalizations	986 (45.1%)	698 (70.8%)	248 (25.2%)	93 (9.4%)	155 (15.7%)	40 (4.1%)
		Deaths	41 (6.7%)	27 (65.9%)	13 (31.7%)	3 (7.3%)	10 (24.4%)	1 (2.4%)
	≥50 yrs	Cases	22,843 (21.6%)	1,833 (8.0%)	19,188 (84.0%)	596 (2.6%)	18,592 (81.4%)	1,822 (8.0%)
		Hospitalizations	1,201 (54.9%)	333 (27.7%)	867 (72.2%)	54 (4.5%)	813 (67.7%)	1 (0.1%)
		Deaths	568 (93.3%)	119 (21.0%)	437 (76.9%)	35 (6.2%)	402 (70.8%)	12 (2.1%)
Aug 30-Sept 12, 2021	All ages	Cases	101,044 (100%)	37,641 (37.3%)	55,519 (54.9%)	11,942 (11.8%)	43,577 (43.1%)	7,884 (7.8%)
		Hospitalizations	2,935 (100%)	1,239 (42.2%)	1,649 (56.2%)	187 (6.4%)	1,462 (49.8%)	47 (1.6%)
		Deaths	744 (100%)	186 (25.0%)	546 (73.4%)	24 (3.2%)	522 (70.2%)	12 (1.6%)
	<50 yrs	Cases	76,416 (75.6%)	35,814 (46.9%)	34,402 (45.0%)	11,398 (14.9%)	23,004 (30.1%)	6,200 (8.1%)
		Hospitalizations	1,132 (38.6%)	775 (68.5%)	324 (28.6%)	124 (11.0%)	200 (17.7%)	33 (2.9%)

	Deaths	50 (6.7%)	33 (66.0%)	14 (28.0%)	3 (6.0%)	11 (22.0%)	3 (6.0%)
≥50 yrs	Cases	24,480 (24.2%)	1,827 (7.5%)	21,115 (86.3%)	544 (2.2%)	20,571 (84.0%)	1,538 (6.3%)
	Hospitalizations	1,793 (61.1%)	464 (25.9%)	1,325 (73.9%)	63 (3.5%)	1,262 (70.4%)	4 (0.2%)
	Deaths	692 (93.0%)	153 (22.1%)	532 (76.9%)	21 (3.0%)	511 (73.8%)	7 (1.0%)

Table S5: Outcomes of Confirmed Delta variant cases, Hospitalizations and deaths based on the vaccination status reported in Public Health England technical briefings until September 12, 2021. *SARS-CoV2 cases tested positive with the specimen date post receiving the first dose without additional doses of vaccination are considered one dose. †SARS-CoV2 cases tested positive with the specimen date ≥14 days post second dose are considered vaccinated with two doses.

Table S6a: SARS-CoV2 cases reported by specimen date (reported weekly for prior 4 weeks period) in NIMS-database based on vaccination status

Outcome	Study period (rolling four weeks ending)	Age (yrs)	Total cases (n=% of cases all ages)	Unvaccinated Cases (n=% for age group)	Vaccinated cases (cases) (n=% for age group)				Vaccination status unknown (n=% for age group)
					All vaccinated	1 dose*	Two doses [‡]	Third dose [∅]	
Cases	12-Sep-21	All ages	711,304 (100%)	711,304 (37.0%)	382,422 (53.8%)	93,143 (13.1%)	289,279 (40.7%)		65,597 (9.2%)
		≥18	520,441 (73.2%)	101,867 (19.6%)	369,802 (71.1%)	81,332 (15.6%)	288,470 (55.4%)		48,772 (9.4%)
		≥50	170,525 (24.0%)	11,265 (6.6%)	146,085 (85.7%)	3,575 (2.1%)	142,510 (83.6%)		13,175 (7.7%)
Cases	19-Sep-21	All ages	680,582 (100%)	680,582 (40.5%)	344,691 (50.6%)	67,187 (9.9%)	277,504 (40.8%)		60,046 (8.8%)
		≥18	461,551 (67.8%)	87,377 (18.9%)	331,990 (71.9%)	55,159 (12.0%)	276,831 (60.0%)		42,184 (9.1%)
		≥50	160,432 (23.6%)	10,247 (6.4%)	138,185 (86.1%)	3,129 (2.0%)	135,056 (84.2%)		12,000 (7.5%)
Cases	26-Sep-21	All ages	699,489 (100%)	699,489 (45.2%)	326,250 (46.6%)	53,070 (7.6%)	273,180 (39.1%)		57,237 (8.2%)
		≥18	425,804 (60.9%)	75,925 (17.8%)	312,932 (73.5%)	40,434 (9.5%)	272,498 (64.0%)		36,947 (8.7%)
		≥50	149,993 (21.4%)	9,131 (6.1%)	130,176 (86.8%)	2,790 (1.9%)	127,386 (84.9%)		10,686 (7.1%)
Cases	3-Oct-21	All ages	696,281 (100%)	696,281 (48.5%)	305,326 (43.9%)	39,232 (5.6%)	266,094 (38.2%)		53,385 (7.7%)
		≥18	390,853 (56.1%)	64,589 (16.5%)	293,846 (75.2%)	28,361 (7.3%)	265,485 (67.9%)		32,418 (8.3%)
		≥50	140,407 (20.2%)	8,038 (5.7%)	122,880 (87.5%)	2,541 (1.8%)	120,339 (85.7%)		9,489 (6.8%)
Cases	10-Oct-21	All ages	750,518 (100%)	750,518 (49.5%)	325,759 (43.4%)	37,578 (5.0%)	288,181 (38.4%)		53,063 (7.1%)
		≥18	402,004 (53.6%)	60,497 (15.0%)	310,745 (77.3%)	23,218 (5.8%)	287,527 (71.5%)		30,762 (7.7%)
		≥50	147,044 (19.6%)	7,689 (5.2%)	130,192 (88.5%)	2,496 (1.7%)	127,696 (86.8%)		9,163 (6.2%)
Cases	17-Oct-21	All ages	856,370 (100%)	856,370 (48.5%)	384,997 (45.0%)	44,937 (5.2%)	340,060 (39.7%)		56,264 (6.6%)
		≥18	458,488 (53.5%)	63,961 (14.0%)	362,555 (79.1%)	23,238 (5.1%)	339,317 (74.0%)		31,972 (7.0%)

		≥50	172,442 (20.1%)	8,311 (4.8%)	154,314 (89.5%)	2,802 (1.6%)	151,512 (87.9%)		9,817 (5.7%)
Cases	24-Oct-21	All ages	930,013 (100%)	930,013 (45.7%)	445,585 (47.9%)	54,490 (5.9%)	391,095 (42.1%)		59,414 (6.4%)
		≥18	518,934 (55.8%)	70,006 (13.5%)	414,312 (79.8%)	24,038 (4.6%)	390,274 (75.2%)		34,616 (6.7%)
		≥50	202,169 (21.7%)	9,486 (4.7%)	181,627 (89.8%)	3,066 (1.5%)	178,561 (88.3%)		11,056 (5.5%)
Cases	31-Oct-21	All ages	975,224 (100%)	975,224 (42.4%)	501,078 (51.4%)	61,288 (6.3%)	439,790 (45.1%)		61,034 (6.3%)
		≥18	577,740 (59.2%)	76,219 (13.2%)	464,265 (80.4%)	25,293 (4.4%)	438,972 (76.0%)		37,256 (6.4%)
		≥50	229,334 (23.5%)	10,573 (4.6%)	206,516 (90.1%)	3,371 (1.5%)	203,145 (88.6%)		12,245 (5.3%)
Cases	7-Nov-21	All ages	950,837 (100%)	950,837 (39.8%)	513,146 (54.0%)	62,154 (6.5%)	450,992 (47.4%)		59,668 (6.3%)
		≥18	593,357 (62.4%)	79,516 (13.4%)	475,740 (80.2%)	25,554 (4.3%)	450,186 (75.9%)		38,101 (6.4%)
		≥50	235,549 (24.8%)	11,088 (4.7%)	212,064 (90.0%)	3,431 (1.5%)	208,633 (88.6%)		12,397 (5.3%)
Cases	14-Nov-21	All ages	907,478 (100%)	907,478 (37.2%)	513,094 (56.5%)	63,339 (7.0%)	449,755 (49.6%)		57,040 (6.3%)
		≥18	593,762 (65.4%)	81,589 (13.7%)	474,266 (79.9%)	25,350 (4.3%)	448,916 (75.6%)		37,907 (6.4%)
		≥50	232,221 (25.6%)	11,498 (5.0%)	208,679 (89.9%)	3,405 (1.5%)	205,274 (88.4%)		12,044 (5.2%)
Cases	21-Nov-21	All ages	888,449 (100%)	888,449 (36.8%)	506,459 (57.0%)	62,428 (7.0%)	444,031 (50.0%)		55,147 (6.2%)
		≥18	588,131 (66.2%)	83,121 (14.1%)	468,060 (79.6%)	24,894 (4.2%)	443,166 (75.4%)		36,950 (6.3%)
		≥50	219,859 (24.7%)	11,586 (5.3%)	197,217 (89.7%)	3,375 (1.5%)	193,842 (88.2%)		11,056 (5.0%)
Cases	28-Nov-21	All ages	905,267 (100%)	905,267 (38.1%)	503,519 (55.6%)	65,115 (7.2%)	438,404 (48.4%)		56,836 (6.3%)
		≥18	584,205 (64.5%)	85,038 (14.6%)	461,939 (79.1%)	24,489 (4.2%)	437,450 (74.9%)		37,228 (6.4%)
		≥50	205,829 (22.7%)	11,804 (5.7%)	183,675 (89.2%)	3,248 (1.6%)	180,427 (87.7%)		10,350 (5.0%)
Cases	5-Dec-21	All ages	997,322 (100%)	997,322 (39.1%)	544,391 (54.6%)	73,786 (7.4%)	470,605 (47.2%)		62,835 (6.3%)
		≥18	628,872 (63.1%)	92,746 (14.7%)	495,707 (78.8%)	26,242 (4.2%)	469,465 (74.7%)		40,419 (6.4%)
		≥50	204,824 (20.5%)	12,754 (6.2%)	181,506 (88.6%)	3,447 (1.7%)	178,059 (86.9%)		10,564 (5.2%)
Cases	12-Dec-21	All ages	1,086,083 (100%)	1,086,083 (38.5%)	597,751 (55.0%)	79,378 (7.3%)	518,373 (47.7%)		70,726 (6.5%)
		≥18	697,726 (64.2%)	104,612 (15.0%)	546,335 (78.3%)	29,274 (4.2%)	517,061 (74.1%)		46,779 (6.7%)
		≥50	201,843 (18.6%)	13,710 (6.8%)	177,349 (87.9%)	3,615 (1.8%)	173,734 (86.1%)		10,784 (5.3%)
Cases	19-Dec-21	All ages	1,371,157 (100%)	1,371,157 (32.5%)	832,918 (60.7%)	94,734 (6.9%)	738,184 (53.8%)		92,902 (6.8%)
		≥18	975,822 (71.2%)	132,809 (13.6%)	775,634 (79.5%)	39,618 (4.1%)	736,016 (75.4%)		67,379 (6.9%)

		≥50	233,191 (17.0%)	15,774 (6.8%)	204,398 (87.7%)	4,116 (1.8%)	200,282 (85.9%)		13,019 (5.6%)
Cases	2-Jan-22	All ages	2,556,580 (100%)	2,556,580 (21.5%)	1,827,454 (71.5%)	163,826 (6.4%)	1,663,628 (65.1%)		180,064 (7.0%)
		≥18	2,127 (83.2%)	240,879 (11.3%)	1,738,627 (81.7%)	84,102 (4.0%)	1,654,525 (77.8%)		147,919 (7.0%)
		≥50	560,458 (21.9%)	27,116 (4.8%)	500,304 (89.3%)	8,046 (1.4%)	492,258 (87.8%)		33,038 (5.9%)
Cases	9-Jan-22	All ages	3,161,258 (100%)	3,161,258 (20.3%)	2,291,288 (72.5%)	202,336 (6.4%)	2,088,952 (66.1%)		229,101 (7.2%)
		≥18	2,659 (84.1%)	292,438 (11.0%)	2,177,293 (81.9%)	103,771 (3.9%)	2,073,522 (78.0%)		189,614 (7.1%)
		≥50	749,614 (23.7%)	33,156 (4.4%)	670,870 (89.5%)	9,977 (1.3%)	660,893 (88.2%)		45,588 (6.1%)
Cases	16-Jan-22	All ages	3,183,566 (100%)	3,183,566 (21.9%)	2,254,937 (70.8%)	206,329 (6.5%)	1,112,775 (35.0%)	935,833 (29.4%)	230,878 (7.3%)
		≥18	2,605 (81.8%)	285,948 (11.0%)	2,131,103 (81.8%)	100,960 (3.9%)	1,095,228 (42.0%)	934,915 (35.9%)	188,677 (7.2%)
		≥50	786,950 (24.7%)	33,742 (4.3%)	704,355 (89.5%)	10,093 (1.3%)	153,439 (19.5%)	540,823 (68.7%)	48,853 (6.2%)
Cases	23-Jan-22	All ages	3,034,409 (100%)	3,034,409 (25.1%)	2,058,948 (67.9%)	199,979 (6.6%)	844,861 (27.8%)	1,014,108 (33.4%)	213,040 (7.0%)
		≥18	2,351 (77.5%)	255,701 (10.9%)	1,926,523 (81.9%)	88,213 (3.8%)	825,293 (35.1%)	1,013,017 (43.1%)	168,964 (7.2%)
		≥50	735,711 (24.2%)	30,660 (4.2%)	659,811 (89.7%)	8,958 (1.2%)	114,649 (15.6%)	536,204 (72.9%)	45,240 (6.1%)
Cases	30-Jan-22	All ages	2,872,077 (100%)	2,872,077 (29.4%)	1,832,328 (63.8%)	205,387 (7.2%)	607,331 (21.1%)	1,019,610 (35.5%)	195,470 (6.8%)
		≥18	2,057 (71.6%)	231,750 (11.3%)	1,677,414 (81.5%)	75,802 (3.7%)	583,313 (28.3%)	1,018,299 (49.5%)	148,566 (7.2%)
		≥50	600,808 (20.9%)	25,917 (4.3%)	535,661 (89.2%)	7,130 (1.2%)	74,353 (12.4%)	454,178 (75.6%)	39,230 (6.5%)
Cases	6-Feb-22	All ages	2,293,771 (100%)	2,293,771 (31.7%)	1,426,498 (62.2%)	171,086 (7.5%)	369,295 (16.1%)	886,117 (38.6%)	140,444 (6.1%)
		≥18	1,544 (67.3%)	159,596 (10.3%)	1,281,180 (83.0%)	51,615 (3.3%)	344,772 (22.3%)	884,793 (57.3%)	103,389 (6.7%)
		≥50	448,840 (19.6%)	18,505 (4.1%)	402,612 (89.7%)	5,060 (1.1%)	43,512 (9.7%)	354,040 (78.9%)	27,723 (6.2%)
Cases	13-Feb-22	All ages	1,980,778 (100%)	1,980,778 (29.8%)	1,277,533 (64.5%)	146,856 (7.4%)	289,924 (14.6%)	840,753 (42.4%)	113,796 (5.7%)
		≥18	1,358 (68.6%)	128,278 (9.4%)	1,145,794 (84.3%)	42,017 (3.1%)	264,366 (19.5%)	839,411 (61.8%)	84,457 (6.2%)
		≥50	402,677 (20.3%)	14,945 (3.7%)	365,185 (90.7%)	4,197 (1.0%)	32,500 (8.1%)	328,488 (81.6%)	22,547 (5.6%)
Cases	20-Feb-22	All ages	1,578,203 (100%)	1,578,203 (25.6%)	1,086,434 (68.8%)	109,803 (7.0%)	224,505 (14.2%)	752,126 (47.7%)	87,739 (5.6%)

		≥18	1,153 (73.1%)	100,923 (8.7%)	984,555 (85.4%)	33,209 (2.9%)	200,489 (17.4%)	750,857 (65.1%)	68,036 (5.9%)
		≥50	366,989 (23.3%)	12,308 (3.4%)	335,767 (91.5%)	3,484 (0.9%)	25,606 (7.0%)	306,677 (83.6%)	18,914 (5.2%)
Cases	27-Feb-22	All ages	1,154,859 (100%)	1,154,859 (21.2%)	846,616 (73.3%)	67,669 (5.9%)	162,998 (14.1%)	615,949 (53.3%)	63,930 (5.5%)
		≥18	910,456 (78.8%)	74,831 (8.2%)	783,337 (86.0%)	24,454 (2.7%)	144,037 (15.8%)	614,846 (67.5%)	52,288 (5.7%)
		≥50	314,123 (27.2%)	9,821 (3.1%)	288,812 (91.9%)	2,775 (0.9%)	19,389 (6.2%)	266,648 (84.9%)	15,490 (4.9%)
Cases	6-Mar-22	All ages	927,841 (100%)	927,841 (18.0%)	710,601 (76.6%)	41,523 (4.5%)	124,333 (13.4%)	544,745 (58.7%)	49,838 (5.4%)
		≥18	774,595 (83.5%)	59,904 (7.7%)	672,261 (86.8%)	18,878 (2.4%)	109,575 (14.1%)	543,808 (70.2%)	42,430 (5.5%)
		≥50	291,177 (31.4%)	8,351 (2.9%)	269,443 (92.5%)	2,305 (0.8%)	16,012 (5.5%)	251,126 (86.2%)	13,383 (4.6%)
Cases	13-Mar-22	All ages	995,166 (100%)	995,166 (17.3%)	774,991 (77.9%)	35,325 (3.5%)	120,538 (12.1%)	619,128 (62.2%)	47,611 (4.8%)
		≥18	841,958 (84.6%)	60,372 (7.2%)	740,601 (88.0%)	18,039 (2.1%)	104,580 (12.4%)	617,982 (73.4%)	40,985 (4.9%)
		≥50	339,806 (34.1%)	8,713 (2.6%)	317,352 (93.4%)	2,356 (0.7%)	16,427 (4.8%)	298,569 (87.9%)	13,741 (4.0%)
Cases	20-Mar-22	All ages	1,237,498 (100%)	1,237,498 (17.1%)	970,347 (78.4%)	39,117 (3.2%)	139,110 (11.2%)	792,120 (64.0%)	55,172 (4.5%)
		≥18	1,045 (84.5%)	70,018 (6.7%)	928,447 (88.8%)	20,229 (1.9%)	117,728 (11.3%)	790,490 (75.6%)	47,259 (4.5%)
		≥50	442,044 (35.7%)	10,397 (2.4%)	415,176 (93.9%)	2,733 (0.6%)	19,477 (4.4%)	392,966 (88.9%)	16,471 (3.7%)
Cases	27-Mar-22	All ages	1,553,609 (100%)	1,553,609 (16.6%)	1,228,616 (79.1%)	46,866 (3.0%)	170,597 (11.0%)	1,011,153 (65.1%)	66,636 (4.3%)
		≥18	1,318 (84.9%)	85,614 (6.5%)	1,176,134 (89.2%)	24,334 (1.8%)	142,964 (10.8%)	1,008,836 (76.5%)	56,942 (4.3%)
		≥50	572,612 (36.9%)	12,871 (2.2%)	539,347 (94.2%)	3,396 (0.6%)	24,122 (4.2%)	511,829 (89.4%)	20,394 (3.6%)

Table S6a: SARS-CoV2 cases reported by specimen date (reported weekly for prior 4 weeks period) in NIMS-database based on vaccination status since August 16, 2021 until May 27, 2022 until USHSA stopped reporting of SARS-CoV2 cases, hospitalization and deaths bases on vaccination status. *SARS-CoV2 cases tested positive with the specimen date post receiving the first dose without additional doses of vaccination are considered one dose. †SARS-CoV2 cases tested positive with the specimen date ≥14 days post second dose are considered vaccinated with two doses. ‡ SARS-CoV2 cases tested positive with the specimen date ≥14 days post third dose are considered vaccinated with the third dose.

Table S6b: SARS-CoV2 Hospitalization within 28 days of a positive test resulting in overnight inpatient admission in NIMS-database based on vaccination status

Outcome	Study period (rolling four weeks ending)	Age	Total hospitalizations	Hospitalizations Unvaccinated	Hospitalizations Vaccinated				Vaccination status unknown
					All vaccinated	1 dose*	Two doses [†]	Third dose [∅]	
Hospitalizations	12-Sep-21	All ages	8,356 (100%)	3,425 (41.0%)	4,810 (57.6%)	434 (5.2%)	4,376 (52.4%)		121 (1.4%)
		≥18	7,817 (93.5%)	2,931 (37.5%)	4,794 (61.3%)	418 (5.3%)	4,376 (56.0%)		92 (1.2%)
		≥50	5,431 (65.0%)	1,358 (25.0%)	4,043 (74.4%)	175 (3.2%)	3,868 (71.2%)		30 (0.6%)
Hospitalizations	19-Sep-21	All ages	8,255 (100%)	3,220 (39.0%)	4,940 (59.8%)	383 (4.6%)	4,557 (55.2%)		95 (1.2%)
		≥18	7,744 (93.8%)	2,742 (35.4%)	4,925 (63.6%)	368 (4.8%)	4,557 (58.8%)		77 (1.0%)
		≥50	5,589 (67.7%)	1,339 (24.0%)	4,227 (75.6%)	164 (2.9%)	4,063 (72.7%)		23 (0.4%)
Hospitalizations	26-Sep-21	All ages	7,729 (100%)	2,922 (37.8%)	4,734 (61.2%)	356 (4.6%)	4,378 (56.6%)		73 (0.9%)
		≥18	7,204 (93.2%)	2,435 (33.8%)	4,710 (65.4%)	332 (4.6%)	4,378 (60.8%)		59 (0.8%)
		≥50	5,227 (67.6%)	1,185 (22.7%)	4,024 (77.0%)	158 (3.0%)	3,866 (74.0%)		18 (0.3%)
Hospitalizations	3-Oct-21	All ages	6,691 (100%)	2,411 (36.0%)	4,206 (62.9%)	296 (4.4%)	3,910 (58.4%)		74 (1.1%)
		≥18	6,205 (92.7%)	1,956 (31.5%)	4,195 (67.6%)	286 (4.6%)	3,909 (63.0%)		54 (0.9%)
		≥50	4,500 (67.3%)	931 (20.7%)	3,551 (78.9%)	139 (3.1%)	3,412 (75.8%)		18 (0.4%)
Hospitalizations	10-Oct-21	All ages	5,148 (100%)	1,842 (35.8%)	3,258 (63.3%)	224 (4.4%)	3,034 (58.9%)		48 (0.9%)
		≥18	4,740 (92.1%)	1,456 (30.7%)	3,247 (68.5%)	214 (4.5%)	3,033 (64.0%)		37 (0.8%)
		≥50	3,360 (65.3%)	660 (19.6%)	2,689 (80.0%)	106 (3.2%)	2,583 (76.9%)		11 (0.3%)
Hospitalizations	17-Oct-21	All ages	7,392 (100%)	2,534 (34.3%)	4,791 (64.8%)	305 (4.1%)	4,486 (60.7%)		67 (0.9%)
		≥18	6,791 (91.9%)	1,974 (29.1%)	4,770 (70.2%)	286 (4.2%)	4,484 (66.0%)		47 (0.7%)
		≥50	4,946 (66.9%)	926 (18.7%)	3,997 (80.8%)	169 (3.4%)	3,828 (77.4%)		23 (0.5%)
Hospitalizations	24-Oct-21	All ages	8,338 (100%)	2,832 (34.0%)	5,429 (65.1%)	305 (3.7%)	5,124 (61.5%)		77 (0.9%)
		≥18	7,705 (92.4%)	2,240 (29.1%)	5,405 (70.1%)	282 (3.7%)	5,123 (66.5%)		60 (0.8%)
		≥50	5,682 (68.1%)	1,087 (19.1%)	4,567 (80.4%)	158 (2.8%)	4,409 (77.6%)		28 (0.5%)

Hospitalizations	31-Oct-21	All ages	8,722 (100%)	2,806 (32.2%)	5,831 (66.9%)	297 (3.4%)	5,534 (63.4%)	85 (1.0%)
		≥18	8,141 (93.3%)	2,267 (27.8%)	5,809 (71.4%)	276 (3.4%)	5,533 (68.0%)	65 (0.8%)
		≥50	6,147 (70.5%)	1,158 (18.8%)	4,956 (80.6%)	151 (2.5%)	4,805 (78.2%)	33 (0.5%)
Hospitalizations	7-Nov-21	All ages	10,179 (100%)	3,313 (32.5%)	6,786 (66.7%)	325 (3.2%)	6,461 (63.5%)	80 (0.8%)
		≥18	9,548 (93.8%)	2,722 (28.5%)	6,759 (70.8%)	300 (3.1%)	6,459 (67.6%)	67 (0.7%)
		≥50	7,179 (70.5%)	1,390 (19.4%)	5,753 (80.1%)	153 (2.1%)	5,600 (78.0%)	36 (0.5%)
Hospitalizations	14-Nov-21	All ages	9,831 (100%)	3,200 (32.6%)	6,560 (66.7%)	327 (3.3%)	6,233 (63.4%)	71 (0.7%)
		≥18	9,278 (94.4%)	2,692 (29.0%)	6,529 (70.4%)	296 (3.2%)	6,233 (67.2%)	57 (0.6%)
		≥50	6,956 (70.8%)	1,391 (20.0%)	5,538 (79.6%)	149 (2.1%)	5,389 (77.5%)	27 (0.4%)
Hospitalizations	21-Nov-21	All ages	9,174 (100%)	3,071 (33.5%)	6,023 (65.7%)	334 (3.6%)	5,689 (62.0%)	80 (0.9%)
		≥18	8,658 (94.4%)	2,604 (30.1%)	5,991 (69.2%)	303 (3.5%)	5,688 (65.7%)	63 (0.7%)
		≥50	6,420 (70.0%)	1,358 (21.2%)	5,027 (78.3%)	154 (2.4%)	4,873 (75.9%)	35 (0.5%)
Hospitalizations	28-Nov-21	All ages	6,639 (100%)	2,355 (35.5%)	4,231 (63.7%)	233 (3.5%)	3,998 (60.2%)	53 (0.8%)
		≥18	6,254 (94.2%)	2,004 (32.0%)	4,211 (67.3%)	214 (3.4%)	3,997 (63.9%)	39 (0.6%)
		≥50	4,618 (69.6%)	1,077 (23.3%)	3,520 (76.2%)	110 (2.4%)	3,410 (73.8%)	21 (0.5%)
Hospitalizations	5-Dec-21	All ages	8,156 (100%)	3,187 (39.1%)	4,875 (59.8%)	340 (4.2%)	4,535 (55.6%)	94 (1.2%)
		≥18	7,575 (92.9%)	2,676 (35.3%)	4,830 (63.8%)	304 (4.0%)	4,526 (59.7%)	69 (0.9%)
		≥50	5,330 (65.4%)	1,451 (27.2%)	3,845 (72.1%)	158 (3.0%)	3,687 (69.2%)	34 (0.6%)
Hospitalizations	12-Dec-21	All ages	8,235 (100%)	3,532 (42.9%)	4,602 (55.9%)	346 (4.2%)	4,256 (51.7%)	101 (1.2%)
		≥18	7,601 (92.3%)	2,965 (39.0%)	4,556 (59.9%)	309 (4.1%)	4,247 (55.9%)	80 (1.1%)
		≥50	5,153 (62.6%)	1,591 (30.9%)	3,524 (68.4%)	170 (3.3%)	3,354 (65.1%)	38 (0.7%)
Hospitalizations	19-Dec-21	All ages	8,190 (100%)	3,693 (45.1%)	4,388 (53.6%)	361 (4.4%)	4,027 (49.2%)	109 (1.3%)
		≥18	7,542 (92.1%)	3,115 (41.3%)	4,339 (57.5%)	319 (4.2%)	4,020 (53.3%)	88 (1.2%)
		≥50	5,007 (61.1%)	1,708 (34.1%)	3,253 (65.0%)	177 (3.5%)	3,076 (61.4%)	46 (0.9%)
Hospitalizations	2-Jan-22	All ages	9,981 (100%)	4,056 (40.6%)	5,791 (58.0%)	508 (5.1%)	5,283 (52.9%)	134 (1.3%)
		≥18	9,082 (91.0%)	3,260 (35.9%)	5,735 (63.1%)	462 (5.1%)	5,273 (58.1%)	87 (1.0%)
		≥50	5,955 (59.7%)	1,756 (29.5%)	4,159 (69.8%)	234 (3.9%)	3,925 (65.9%)	40 (0.7%)
Hospitalizations	9-Jan-22	All ages	13,514 (100%)	4,738 (35.1%)	8,566 (63.4%)	689 (5.1%)	7,877 (58.3%)	210 (1.6%)
		≥18	12,219 (90.4%)	3,614 (29.6%)	8,473 (69.3%)	608 (5.0%)	7,865 (64.4%)	132 (1.1%)
		≥50	8,206 (60.7%)	1,966 (24.0%)	6,192 (75.5%)	309 (3.8%)	5,883 (71.7%)	48 (0.6%)

Hospitalizations	16-Jan-22	All ages	15,012 (100%)	4,752 (31.7%)	10,051 (67.0%)	781 (5.2%)	4,127 (27.5%)	5,143 (34.3%)	209 (1.4%)
		≥18	13,503 (89.9%)	3,445 (25.5%)	9,925 (73.5%)	670 (5.0%)	4,116 (30.5%)	5,139 (38.1%)	133 (1.0%)
		≥50	9,311 (62.0%)	1,880 (20.2%)	7,389 (79.4%)	340 (3.7%)	2,438 (26.2%)	4,611 (49.5%)	42 (0.5%)
Hospitalizations	23-Jan-22	All ages	16,294 (100%)	4,807 (29.5%)	11,277 (69.2%)	829 (5.1%)	3,999 (24.5%)	6,449 (39.6%)	210 (1.3%)
		≥18	14,459 (88.7%)	3,210 (22.2%)	11,124 (76.9%)	701 (4.8%)	3,978 (27.5%)	6,445 (44.6%)	125 (0.9%)
		≥50	10,270 (63.0%)	1,753 (17.1%)	8,462 (82.4%)	338 (3.3%)	2,403 (23.4%)	5,721 (55.7%)	55 (0.5%)
Hospitalizations	6-Feb-22	All ages	11,197 (100%)	3,261 (29.1%)	7,804 (69.7%)	607 (5.4%)	2,121 (18.9%)	5,076 (45.3%)	132 (1.2%)
		≥18	9,463 (84.5%)	1,737 (18.4%)	7,641 (80.7%)	476 (5.0%)	2,092 (22.1%)	5,073 (53.6%)	85 (0.9%)
		≥50	6,814 (60.9%)	946 (13.9%)	5,827 (85.5%)	225 (3.3%)	1,235 (18.1%)	4,367 (64.1%)	41 (0.6%)
Hospitalizations	13-Feb-22	All ages	10,222 (100%)	2,858 (28.0%)	7,294 (71.4%)	545 (5.3%)	1,810 (17.7%)	4,939 (48.3%)	70 (0.7%)
		≥18	8,599 (84.1%)	1,441 (16.8%)	7,118 (82.8%)	411 (4.8%)	1,769 (20.6%)	4,938 (57.4%)	40 (0.5%)
		≥50	6,158 (60.2%)	791 (12.8%)	5,349 (86.9%)	199 (3.2%)	996 (16.2%)	4,154 (67.5%)	18 (0.3%)
Hospitalizations	20-Feb-22	All ages	9,309 (100%)	2,341 (25.1%)	6,889 (74.0%)	463 (5.0%)	1,490 (16.0%)	4,936 (53.0%)	79 (0.8%)
		≥18	7,978 (85.7%)	1,209 (15.2%)	6,723 (84.3%)	340 (4.3%)	1,449 (18.2%)	4,934 (61.8%)	46 (0.6%)
		≥50	5,858 (62.9%)	662 (11.3%)	5,183 (88.5%)	166 (2.8%)	844 (14.4%)	4,173 (71.2%)	12 (0.2%)
Hospitalizations	27-Feb-22	All ages	7,975 (100%)	1,832 (23.0%)	6,098 (76.5%)	362 (4.5%)	1,178 (14.8%)	4,558 (57.2%)	45 (0.6%)
		≥18	7,015 (88.0%)	1,020 (14.5%)	5,973 (85.1%)	268 (3.8%)	1,149 (16.4%)	4,556 (64.9%)	22 (0.3%)
		≥50	5,291 (66.3%)	560 (10.6%)	4,726 (89.3%)	135 (2.6%)	692 (13.1%)	3,899 (73.7%)	5 (0.1%)
Hospitalizations	6-Mar-22	All ages	7,378 (100%)	1,504 (20.4%)	5,831 (79.0%)	301 (4.1%)	1,025 (13.9%)	4,505 (61.1%)	43 (0.6%)
		≥18	6,644 (90.1%)	882 (13.3%)	5,740 (86.4%)	238 (3.6%)	1,000 (15.1%)	4,502 (67.8%)	22 (0.3%)
		≥50	5,095 (69.1%)	483 (9.5%)	4,607 (90.4%)	111 (2.2%)	627 (12.3%)	3,869 (75.9%)	5 (0.1%)
Hospitalizations	13-Mar-22	All ages	6,573 (100%)	1,349 (20.5%)	5,193 (79.0%)	241 (3.7%)	837 (12.7%)	4,115 (62.6%)	31 (0.5%)
		≥18	5,915 (90.0%)	774 (13.1%)	5,124 (86.6%)	190 (3.2%)	822 (13.9%)	4,112 (69.5%)	17 (0.3%)
		≥50	4,606 (70.1%)	409 (8.9%)	4,192 (91.0%)	94 (2.0%)	518 (11.2%)	3,580 (77.7%)	5 (0.1%)
Hospitalizations	20-Mar-22	All ages	8,990 (100%)	1,848 (20.6%)	7,088 (78.8%)	309 (3.4%)	1,025 (11.4%)	5,754 (64.0%)	54 (0.6%)
		≥18	8,043 (89.5%)	1,015 (12.6%)	6,996 (87.0%)	252 (3.1%)	993 (12.3%)	5,751 (71.5%)	32 (0.4%)
		≥50	6,328 (70.4%)	509 (8.0%)	5,807 (91.8%)	132 (2.1%)	615 (9.7%)	5,060 (80.0%)	12 (0.2%)
Hospitalizations	27-Mar-22	All ages	10,389 (100%)	2,065 (19.9%)	8,261 (79.5%)	331 (3.2%)	1,180 (11.4%)	6,750 (65.0%)	63 (0.6%)
		≥18	9,293 (89.5%)	1,100 (11.8%)	8,157 (87.8%)	270 (2.9%)	1,142 (12.3%)	6,745 (72.6%)	36 (0.4%)
		≥50	7,329 (70.5%)	530 (7.2%)	6,786 (92.6%)	148 (2.0%)	685 (9.3%)	5,953 (81.2%)	12 (0.2%)

Table S6b: SARS-CoV2 Hospitalization within 28 days of a positive test resulting in overnight inpatient admission (reported weekly for prior 4 weeks period) in NIMS-database based on vaccination status since August 16, 2021 until May 27, 2022 until USHSA stopped reporting of SARS-CoV2 cases, hospitalization and deaths bases on vaccination status. *SARS-CoV2 cases tested positive with the specimen date post receiving the first dose without additional doses of vaccination are considered one dose. †SARS-CoV2 cases tested positive with the specimen date ≥ 14 days post second dose **are** considered vaccinated with two doses. ‡ SARS-CoV2 cases tested positive with the specimen date ≥ 14 days post third dose **are** considered vaccinated with the third dose.

Table S6c: SARS-CoV2 deaths within 28 days of positive COVID-19 test by date of death in NIMS-database based on vaccination

Outcome	Study period (rolling four weeks ending)	Age (yrs)	Total deaths (n=% of all ages)	Unvaccinated deaths (n=% for age group)	Vaccinated deaths (n=% for age group)				Vaccination status unknown
					All Vaccinated	1 dose*	Two doses [†]	Third dose [∅]	
Deaths	12-Sep-21	All ages	2,961 (100%)	726 (24.5%)	2,206 (74.5%)	112 (3.8%)	2,094 (70.7%)		29 (1.0%)
		≥18	2,957 (99.9%)	723 (24.5%)	2,206 (74.6%)	112 (3.8%)	2,094 (70.8%)		28 (0.9%)
		≥50	2,775 (93.7%)	599 (21.6%)	2,153 (77.6%)	101 (3.6%)	2,052 (73.9%)		23 (0.8%)
Deaths	19-Sep-21	All ages	3,158 (100%)	730 (23.1%)	2,395 (75.8%)	111 (3.5%)	2,284 (72.3%)		33 (1.0%)
		≥18	3,152 (99.8%)	726 (23.0%)	2,395 (76.0%)	111 (3.5%)	2,284 (72.5%)		31 (1.0%)
		≥50	2,983 (94.5%)	615 (20.6%)	2,342 (78.5%)	103 (3.5%)	2,239 (75.1%)		26 (0.9%)
Deaths	26-Sep-21	All ages	3,165 (100%)	687 (21.7%)	2,448 (77.3%)	110 (3.5%)	2,338 (73.9%)		30 (0.9%)
		≥18	3,159 (99.8%)	683 (21.6%)	2,448 (77.5%)	110 (3.5%)	2,338 (74.0%)		28 (0.9%)
		≥50	3,005 (94.9%)	586 (19.5%)	2,396 (79.7%)	103 (3.4%)	2,293 (76.3%)		23 (0.8%)
Deaths	3-Oct-21	All ages	3,026 (100%)	611 (20.2%)	2,382 (78.7%)	101 (3.3%)	2,281 (75.4%)		33 (1.1%)
		≥18	3,020 (99.8%)	609 (20.2%)	2,381 (78.8%)	100 (3.3%)	2,281 (75.5%)		30 (1.0%)
		≥50	2,887 (95.4%)	522 (18.1%)	2,341 (81.1%)	95 (3.3%)	2,246 (77.8%)		24 (0.8%)
Deaths	10-Oct-21	All ages	2,805 (100%)	557 (19.9%)	2,228 (79.4%)	92 (3.3%)	2,136 (76.1%)		20 (0.7%)
		≥18	2,801 (99.9%)	554 (19.8%)	2,227 (79.5%)	91 (3.2%)	2,136 (76.3%)		20 (0.7%)
		≥50	2,689 (95.9%)	487 (18.1%)	2,185 (81.3%)	88 (3.3%)	2,097 (78.0%)		17 (0.6%)
Deaths	17-Oct-21	All ages	2,745 (100%)	502 (18.3%)	2,224 (81.0%)	88 (3.2%)	2,136 (77.8%)		19 (0.7%)
		≥18	2,740 (99.8%)	498 (18.2%)	2,223 (81.1%)	87 (3.2%)	2,136 (78.0%)		19 (0.7%)
		≥50	2,635 (96.0%)	433 (16.4%)	2,186 (83.0%)	86 (3.3%)	2,100 (79.7%)		16 (0.6%)
Deaths	24-Oct-21	All ages	2,772 (100%)	487 (17.6%)	2,270 (81.9%)	85 (3.1%)	2,185 (78.8%)		15 (0.5%)
		≥18	2,767 (99.8%)	483 (17.5%)	2,269 (82.0%)	84 (3.0%)	2,185 (79.0%)		15 (0.5%)
		≥50	2,666 (96.2%)	423 (15.9%)	2,230 (83.6%)	82 (3.1%)	2,148 (80.6%)		13 (0.5%)

Deaths	31-Oct-21	All ages	3,085 (100%)	538 (17.4%)	2,532 (82.1%)	85 (2.8%)	2,447 (79.3%)		15 (0.5%)
		≥18	3,079 (99.8%)	532 (17.3%)	2,532 (82.2%)	85 (2.8%)	2,447 (79.5%)		15 (0.5%)
		≥50	2,972 (96.3%)	471 (15.8%)	2,488 (83.7%)	82 (2.8%)	2,406 (81.0%)		13 (0.4%)
Deaths	7-Nov-21	All ages	3,430 (100%)	587 (17.1%)	2,822 (82.3%)	90 (2.6%)	2,732 (79.7%)		21 (0.6%)
		≥18	3,422 (99.8%)	580 (16.9%)	2,822 (82.5%)	90 (2.6%)	2,732 (79.8%)		20 (0.6%)
		≥50	3,297 (96.1%)	511 (15.5%)	2,769 (84.0%)	86 (2.6%)	2,683 (81.4%)		17 (0.5%)
Deaths	14-Nov-21	All ages	3,676 (100%)	675 (18.4%)	2,975 (80.9%)	100 (2.7%)	2,875 (78.2%)		26 (0.7%)
		≥18	3,665 (99.7%)	665 (18.1%)	2,975 (81.2%)	100 (2.7%)	2,875 (78.4%)		25 (0.7%)
		≥50	3,522 (95.8%)	587 (16.7%)	2,914 (82.7%)	91 (2.6%)	2,823 (80.2%)		21 (0.6%)
Deaths	21-Nov-21	All ages	3,726 (100%)	708 (19.0%)	2,992 (80.3%)	89 (2.4%)	2,903 (77.9%)		26 (0.7%)
		≥18	3,717 (99.8%)	700 (18.8%)	2,992 (80.5%)	89 (2.4%)	2,903 (78.1%)		25 (0.7%)
		≥50	3,556 (95.4%)	612 (17.2%)	2,923 (82.2%)	79 (2.2%)	2,844 (80.0%)		21 (0.6%)
Deaths	28-Nov-21	All ages	3,571 (100%)	695 (19.5%)	2,846 (79.7%)	96 (2.7%)	2,750 (77.0%)		30 (0.8%)
		≥18	3,563 (99.8%)	688 (19.3%)	2,846 (79.9%)	96 (2.7%)	2,750 (77.2%)		29 (0.8%)
		≥50	3,415 (95.6%)	606 (17.7%)	2,785 (81.6%)	87 (2.5%)	2,698 (79.0%)		24 (0.7%)
Deaths	5-Dec-21	All ages	3,310 (100%)	708 (21.4%)	2,572 (77.7%)	92 (2.8%)	2,480 (74.9%)		30 (0.9%)
		≥18	3,306 (99.9%)	704 (21.3%)	2,572 (77.8%)	92 (2.8%)	2,480 (75.0%)		30 (0.9%)
		≥50	3,151 (95.2%)	619 (19.6%)	2,506 (79.5%)	85 (2.7%)	2,421 (76.8%)		26 (0.8%)
Deaths	12-Dec-21	All ages	3,087 (100%)	718 (23.3%)	2,341 (75.8%)	82 (2.7%)	2,259 (73.2%)		28 (0.9%)
		≥18	3,083 (99.9%)	715 (23.2%)	2,340 (75.9%)	82 (2.7%)	2,258 (73.2%)		28 (0.9%)
		≥50	2,920 (94.6%)	618 (21.2%)	2,277 (78.0%)	76 (2.6%)	2,201 (75.4%)		25 (0.9%)
Deaths	19-Dec-21	All ages	2,956 (100%)	782 (26.5%)	2,140 (72.4%)	90 (3.0%)	2,050 (69.4%)		34 (1.2%)
		≥18	2,952 (99.9%)	779 (26.4%)	2,139 (72.5%)	90 (3.0%)	2,049 (69.4%)		34 (1.2%)
		≥50	2,772 (93.8%)	667 (24.1%)	2,074 (74.8%)	84 (3.0%)	1,990 (71.8%)		31 (1.1%)
Deaths	2-Jan-22	All ages	2,890 (100%)	809 (28.0%)	2,055 (71.1%)	106 (3.7%)	1,949 (67.4%)		26 (0.9%)
		≥18	2,885 (99.8%)	805 (27.9%)	2,054 (71.2%)	106 (3.7%)	1,948 (67.5%)		26 (0.9%)
		≥50	2,703 (93.5%)	694 (25.7%)	1,985 (73.4%)	99 (3.7%)	1,886 (69.8%)		24 (0.9%)
Deaths	9-Jan-22	All ages	3,174 (100%)	924 (29.1%)	2,219 (69.9%)	130 (4.1%)	2,089 (65.8%)		31 (1.0%)
		≥18	3,166 (99.7%)	916 (28.9%)	2,219 (70.1%)	130 (4.1%)	2,089 (66.0%)		31 (1.0%)
		≥50	2,964 (93.4%)	795 (26.8%)	2,140 (72.2%)	122 (4.1%)	2,018 (68.1%)		29 (1.0%)

Deaths	16-Jan-22	All ages	3,893 (100%)	1,015 (26.1%)	2,845,73 (1%)	171,4 (4%)	1,418 (36.4%)	1,256 (32.3%)	33 (0.8%)
		≥18	3,884 (99.8%)	1,006 (25.9%)	2,845,73 (2%)	171 (4.4%)	1,418 (36.5%)	1,256 (32.3%)	33 (0.8%)
		≥50	3,672 (94.3%)	898 (24.5%)	2,743 (74.7%)	158 (4.3%)	1,344 (36.6%)	1,241 (33.8%)	31 (0.8%)
Deaths	23-Jan-22	All ages	4,637 (100%)	1,010 (21.8%)	3,591,77 (4%)	190 (4.1%)	1,561 (33.7%)	1,840 (39.7%)	36 (0.8%)
		≥18	4,624 (99.7%)	1,000 (21.6%)	3,588,77 (6%)	188 (4.1%)	1,560 (33.7%)	1,840 (39.8%)	36 (0.8%)
		≥50	4,423 (95.4%)	903 (20.4%)	3,486 (78.8%)	174 (3.9%)	1,489 (33.7%)	1,823 (41.2%)	34 (0.8%)
Deaths	30-Jan-22	All ages	5,554 (100%)	1,015 (18.3%)	4,501,81 (0%)	213 (3.8%)	1,703 (30.7%)	2,585 (46.5%)	38 (0.7%)
		≥18	5,542 (99.8%)	1,007 (18.2%)	4,497,81 (1%)	211 (3.8%)	1,701 (30.7%)	2,585 (46.6%)	38 (0.7%)
		≥50	5,310 (95.6%)	912 (17.2%)	4,362 (82.1%)	191 (3.6%)	1,624 (30.6%)	2,547 (48.0%)	36 (0.7%)
Deaths	6-Feb-22	All ages	5,978 (100%)	911 (15.2%)	5,035 (84.2%)	208 (3.5%)	1,631 (27.3%)	3,196 (53.5%)	32 (0.5%)
		≥18	5,967 (99.8%)	904 (15.1%)	5,031 (84.3%)	206 (3.5%)	1,629 (27.3%)	3,196 (53.6%)	32 (0.5%)
		≥50	5,752 (96.2%)	829 (14.4%)	4,894 (85.1%)	189 (3.3%)	1,556 (27.1%)	3,149 (54.7%)	29 (0.5%)
Deaths	13-Feb-22	All ages	5,592 (100%)	728 (13.0%)	4,836 (86.5%)	179 (3.2%)	1,350 (24.1%)	3,307 (59.1%)	28 (0.5%)
		≥18	5,584 (99.9%)	723 (12.9%)	4,833 (86.6%)	178 (3.2%)	1,348 (24.1%)	3,307 (59.2%)	28 (0.5%)
		≥50	5,404 (96.6%)	659 (12.2%)	4,720 (87.3%)	161 (3.0%)	1,299 (24.0%)	3,260 (60.3%)	25 (0.5%)
Deaths	20-Feb-22	All ages	4,883 (100%)	559 (11.4%)	4,302 (88.1%)	147 (3.0%)	1,035 (21.2%)	3,120 (63.9%)	22 (0.5%)
		≥18	4,877 (99.9%)	555 (11.4%)	4,300 (88.2%)	147 (3.0%)	1,033 (21.2%)	3,120 (64.0%)	22 (0.5%)
		≥50	4,731 (96.9%)	506 (10.7%)	4,206 (88.9%)	131 (2.8%)	991 (20.9%)	3,084 (65.2%)	19 (0.4%)
Deaths	27-Feb-22	All ages	3,957 (100%)	397 (10.0%)	3,542 (89.5%)	113 (2.9%)	725 (18.3%)	2,704 (68.3%)	18 (0.5%)
		≥18	3,953 (99.9%)	394 (10.0%)	3,541 (89.6%)	112 (2.8%)	725 (18.3%)	2,704 (68.4%)	18 (0.5%)
		≥50	3,843 (97.1%)	359 (9.3%)	3,469 (90.3%)	103 (2.7%)	689 (17.9%)	2,677 (69.7%)	15 (0.4%)
Deaths	6-Mar-22	All ages	2,943 (100%)	286 (9.7%)	2,643 (89.8%)	79 (2.7%)	482 (16.4%)	2,082 (70.7%)	14 (0.5%)
		≥18	2,940 (99.9%)	284 (9.7%)	2,642 (89.9%)	78 (2.7%)	482 (16.4%)	2,082 (70.8%)	14 (0.5%)
		≥50	2,867 (97.4%)	260 (9.1%)	2,594 (90.5%)	70 (2.4%)	458 (16.0%)	2,066 (72.1%)	13 (0.5%)
Deaths	13-Mar-22	All ages	2,421 (100%)	237 (9.8%)	2,173 (89.8%)	58 (2.4%)	382 (15.8%)	1,733 (71.6%)	11 (0.5%)
		≥18	2,419 (99.9%)	236 (9.8%)	2,172 (89.8%)	57 (2.4%)	382 (15.8%)	1,733 (71.6%)	11 (0.5%)
		≥50	2,364 (97.6%)	216 (9.1%)	2,139 (90.5%)	52 (2.2%)	365 (15.4%)	1,722 (72.8%)	9 (0.4%)
Deaths	20-Mar-22	All ages	2,084 (100%)	202 (9.7%)	1,873 (89.9%)	49 (2.4%)	333 (16.0%)	1,491 (71.5%)	9 (0.4%)
		≥18	2,083 (99.95%)	202 (9.7%)	1,872 (89.9%)	48 (2.3%)	333 (16.0%)	1,491 (71.6%)	9 (0.4%)
		≥50	2,030 (97.4%)	186 (9.2%)	1,836 (90.4%)	45 (2.2%)	315 (15.5%)	1,476 (72.7%)	8 (0.4%)

Deaths	27-Mar-22	All ages	2,144 (100%)	214 (10.0%)	1,773 (82.7%)	1 (0.05%)	215 (10.0%)	1,557 (72.6%)	10 (0.5%)
		≥18	2,142 (99.9%)	213 (9.9%)	1,772 (82.7%)	1 (0.05%)	214 (10.0%)	1,557 (72.7%)	10 (0.5%)
		≥50	2,090 (97.5%)	199 (9.5%)	1,736 (83.1%)	1 (0.05%)	200 (9.6%)	1,535 (73.4%)	9 (0.4%)

Table S6c: SARS-CoV2 deaths within 28 days of positive COVID-19 test by date of death (reported weekly for prior 4 weeks period) in NIMS-database based on vaccination status since August 16, 2021 until May 27, 2022 until USHSA stopped reporting of SARS-CoV2 cases, hospitalization and deaths bases on vaccination status. *SARS-CoV2 cases tested positive with the specimen date post receiving the first dose without additional doses of vaccination are considered one dose. †SARS-CoV2 cases tested positive with the specimen date ≥14 days post second dose are considered vaccinated with two doses. ∅ SARS-CoV2 cases tested positive with the specimen date ≥14 days post third dose are considered vaccinated with the third dose.

Table S7a: Vaccine effectiveness of over 18 years of age NIMS population

Rolling Four weeks period ending	SARS-CoV2 cases; ≥18 yrs of age (during four weeks period)				Incidence rate per 100,000 population				Vaccine effectiveness (95% CI)		
	1 dose	2 dose	3rd dose	Unvaccinated	1 dose	2 doses	3rd dose	Unvaccinated	1 dose*	Two doses†	Third dose ∅
12-Sep-21	81332	288470		101867	2706.5	789.2		956.2	-183.1% (-187% to -178.9%)	17.5% (16.5% to 18.4%)	
19-Sep-21	55159	276831		87377	2036.0	750.2		826.5	-146.3% (-150.3% to -142.2%)	9.2% (8.1% to 10.3%)	
26-Sep-21	40434	272498		75925	1605.8	740.9		723.3	-122% (-126% to -117.8%)	-2.4% (-3.7% to -1.2%)	
3-Oct-21	28361	265485		64589	1188.1	736.6		619.0	-91.9% (-96% to -87.7%)	-19.0% (-20.6% to -17.4%)	
10-Oct-21	23218	287527		60497	1014.8	821.7		583.5	-73.9% (-78% to -69.9%)	-40.8% (-42.7% to -39.0%)	
17-Oct-21	23238	339317		63961	1053.2	1003.9		620.7	-69.7% (-73.7% to -65.7%)	-61.7% (-63.8% to -59.7%)	
24-Oct-21	24038	390274		70006	1122.2	1205.2		683.7	-64.1% (-67.9% to -60.4%)	-76.3% (-78.4% to -74.2%)	
31-Oct-21	25293	438972		76219	1211.9	1419.6		748.6	-61.9% (-65.5% to -58.4%)	-89.6% (-91.8% to -87.5%)	
7-Nov-21	25554	450186		79516	1256.0	1540.8		785.1	-60.0% (63.5% to -56.5%)	-96.3% (-98.5% to -94.1%)	
14-Nov-21	25350	448916		81589	1282.2	1642.0		810.1	-58.3% (-61.8% to -54.9%)	-102.7% (-105.0% to -100.5%)	
21-Nov-21	24894	443166		83121	1291.3	1744.6		829.8	-55.6% (-59.0% to -52.2%)	-110.2% (-112.6% to -107.9%)	
28-Nov-21	24489	437450		85038	1305.0	1872.1		853.7	-52.9% (-56.2% to -49.6%)	-119.3% (-121.7% to -116.9%)	
5-Dec-21	26242	469465		92746	1438.0	2208.1		937.1	-53.4% (-56.7% to -50.2%)	-135.6% (-138.1% to -133.2%)	
12-Dec-21	29274	517061		104612	1649.3	2740.9		1064.4	-54.9% (-58.0% to -51.9%)	-157.5% (-160.1% to -155.0%)	
19-Dec-21	39618	736016		132809	2283.1	5153.1		1367.3	-67.0% (-69.9% to -64.1%)	-276.9% (-280.1% to -273.6%)	

2-Jan-22	84102	1654525		240879	4927.5	16023.7		2520.4	-95.5% (-97.9% to -93.2%)	-535.8% (-539.7% to -531.9%)	
9-Jan-22	103771	2073522		292438	6136.3	22404.2		3084.8	-98.9% (-101.1% to -96.8%)	-626.3% (-630.3% to -622.3%)	
16-Jan-22	100960	1095228	934915	285948	5993.8	12552.7	3075.2	3037.8	-97.3% (-99.5% to -95.2%)	-313.2% (-315.8% to -310.7%)	-1.2% (-1.9% to -0.6%)
23-Jan-22	88213	825293	1013017	255701	5259.6	9761.1	3296.0	2732.5	-92.5% (-94.7% to -90.2%)	-257.2% (-259.6% to -254.8%)	-20.6% (-21.4% to -19.8%)
30-Jan-22	75802	583313	1018299	231750	4543.0	7076.5	3284.3	2489.9	-82.5% (-84.8% to -80.2%)	-184.2% (-186.3% to -182.1%)	-31.9% (-32.8% to -31.0%)
6-Feb-22	51615	344772	884793	159596	3118.9	4251.0	2837.3	1720.9	-81.2% (-84.0% to -78.5%)	-147.0% (-149.3% to -144.7%)	-64.9% (-66.2% to -63.6%)
13-Feb-22	42017	264366	839411	128278	2570.7	3306.4	2677.9	1387.0	-85.3% (-88.5% to -82.2%)	-138.4% (-140.9% to -135.9%)	-93.1% (-94.8% to -91.4%)
20-Feb-22	33209	200489	750857	100923	2055.5	2537.0	2385.4	1093.5	-88.0% (-91.6% to -84.4%)	-132.0% (-134.8% to -129.2%)	-118.1% (-120.2% to -116.1%)
27-Feb-22	24454	144037	614846	74831	1530.3	1840.8	1946.2	812.5	-88.3% (-92.6% to -84.2%)	-126.6% (-129.8% to -123.4%)	-139.5% (-142.2% to -136.9%)
6-Mar-22	18878	109575	543808	59904	1194.5	1410.8	1716.4	651.6	-83.3% (-88.0% to -78.7%)	-116.5% (-120.0% to -113.1%)	-163.4% (-166.6% to -160.2%)
13-Mar-22	18039	104580	617982	60372	1155.3	1355.1	1945.4	657.7	-75.6% (-80.2% to -71.2%)	-106.0% (-109.3% to -102.8%)	-195.8% (-199.3% to -192.3%)
20-Mar-22	20229	117728	790490	70018	1311.9	1534.3	2482.4	764.0	-71.7% (-75.9% to -67.6%)	-100.8% (-103.9% to -97.9%)	-224.9% (-228.5% to -221.4%)
27-Mar-22	24334	142964	1008836	85614	1594.9	1873.8	3160.9	935.3	-70.5% (-74.3% to -66.8%)	-100.3% (-103.1% to -97.7%)	-237.9% (-241.3% to -234.7%)

Table S7a: Vaccine effectiveness of over 18 years of age NIMS population (rolling four weeks cases reported weekly) since August 16, 2021 to March 27, 2022 until UKHSA stopped reporting data of weekly cases among age groups based on vaccination status.

*SARS-CoV2 cases tested positive with the specimen date post receiving the first dose without additional doses of vaccination are considered one dose. †SARS-CoV2 cases tested positive with the specimen date ≥ 14 days post second dose are considered vaccinated with two doses. ‡SARS-CoV2 cases tested positive with the specimen date ≥ 14 days post third dose are considered vaccinated with the third dose.

Table S7b: Vaccine effectiveness of over 50 years of age confirmed Delta variant SARS-CoV2 cases reported by Public Health England

Time period	Confirmed Delta variant COVID-19 cases (≥ 50 yrs of age)			Incidence rate per 100,000 population			Vaccine effectiveness (95% CI)	
	1 dose	2 doses	Unvaccinated	1 dose	2 doses	Unvaccinated	1 dose	2 doses
until June 20, 2021	4651	5234	1267	516.7	27.0	57.5	-797.9% (-889.6% to -717.1%)	53.1% (48.4% to 57.2%)
June 21-July 18, 2021	795	8193	1070	138.1	41.4	50.5	-173.7% (-217.1% to -135.8%)	18.0% (9.8% to 25.2%)
July 19-Aug 1, 2021	389	8045	1103	75.5	40.5	52.7	-43.3% (-71.1% to -19.0%)	23.2% (15.6% to 29.8%)
Aug 2-Aug 15, 2021	468	11356	1451	98.5	56.9	70.0	-40.7% (-65.0% to -19.1%)	18.6% (11.7% to 24.8%)
Aug 16-Aug 29, 2021	596	18592	1833	134.1	93.0	89.1	-50.4% (-73.3% to -29.8%)	-4.3% (-11.9% to 2.5%)
Aug 30-Sept 12, 2021	544	20571	1827	128.3	102.7	89.4	-43.5% (-66.0% to -23.3%)	-14.9% (-23.1% to -7.5%)

Table S7b: Vaccine effectiveness of over 50 years of age confirmed Delta variant SARS-CoV2 cases reported by Public Health England until September 12, 2021. *SARS-CoV2 cases tested positive with the specimen date post receiving the first dose without additional doses of vaccination are considered one dose. †SARS-CoV2 cases tested positive with the specimen date ≥ 14 days post second dose are considered vaccinated with two doses.

Table S7c: Vaccine effectiveness of over 50 years of age NIMS population

Rolling Four weeks period ending	COVID-19 cases; ≥50 yrs of age (during four weeks period)				Incidence rate per 100,000 population				Vaccine effectiveness (95% CI)		
	1 dose*	Two doses [†]	Third dose [∅]	Unvaccinated	1 dose	2 doses	3rd dose	Unvaccinated	1 dose	2 doses	3rd dose
12-Sep-21	81332	288470		101867	843.4	711.7		551.3	-183.1% (-187% to -178.9%)	17.5% (16.5% to 18.4%)	
19-Sep-21	55159	276831		87377	755.4	674.7		503.1	-146.3% (-150.3% to -142.2%)	9.2% (8.1% to 10.3%)	
26-Sep-21	40434	272498		75925	692.7	646.3		449.8	-122% (-126% to -117.8%)	-2.4% (-3.7% to -1.2%)	
3-Oct-21	28361	265485		64589	651.6	635.4		397.1	-91.9% (-96% to -87.7%)	-19.0% (-20.6% to -17.4%)	
10-Oct-21	23218	287527		60497	656.8	712.5		381.1	-73.9% (-78% to -69.9%)	-40.8% (-42.7% to -39.0%)	
17-Oct-21	23238	339317		63961	753.7	902.2		413.2	-69.7% (-73.7% to -65.7%)	-61.7% (-63.8% to -59.7%)	
24-Oct-21	24038	390274		70006	841.2	1155.6		473.3	-64.1% (-67.9% to -60.4%)	-76.3% (-78.4% to -74.2%)	
31-Oct-21	25293	438972		76219	941.3	1444.1		529.4	-61.9% (-65.5% to -58.4%)	-89.6% (-91.8% to -87.5%)	
7-Nov-21	25554	450186		79516	974.0	1672.1		557.2	-60.0% (63.5% to -56.5%)	-96.3% (-98.5% to -94.1%)	
14-Nov-21	25350	448916		81589	986.9	1906.1		580.0	-58.3% (-61.8% to -54.9%)	-102.7% (-105.0% to -100.5%)	
21-Nov-21	24894	443166		83121	1001.2	2136.7		586.9	-55.6% (-59.0% to -52.2%)	-110.2% (-112.6% to -107.9%)	
28-Nov-21	24489	437450		85038	1008.7	2442.3		600.4	-52.9% (-56.2% to -49.6%)	-119.3% (-121.7% to -116.9%)	
5-Dec-21	26242	469465		92746	1119.7	3083.5		651.9	-53.4% (-56.7% to -50.2%)	-135.6% (-138.1% to -133.2%)	

12-Dec-21	29274	517061		104612	1209.8	4066.0		704.8	-54.9% (-58.0% to -51.9%)	-157.5% (-160.1% to -155.0%)	
19-Dec-21	39618	736016		132809	1402.3	6920.1		818.3	-67.0% (-69.9% to -64.1%)	-276.9% (-280.1% to -273.6%)	
2-Jan-22	84102	1654525		240879	2774.2	23991.2		1421.8	-95.5% (-97.9% to -93.2%)	-535.8% (-539.7% to -531.9%)	
9-Jan-22	103771	2073522		292438	3462.9	35837.9		1746.3	-98.9% (-101.1% to -96.8%)	-626.3% (-630.3% to -622.3%)	
16-Jan-22	100960	1095228	934915	285948	3518.0	8823.1	2910.4	1783.9	-97.3% (-99.5% to -95.2%)	-313.2% (-315.8% to -310.7%)	-1.2% (-1.9% to -0.6%)
23-Jan-22	88213	825293	1013017	255701	3132.7	6802.7	2876.2	1625.9	-92.5% (-94.7% to -90.2%)	-257.2% (-259.6% to -254.8%)	-20.6% (-21.4% to -19.8%)
30-Jan-22	75802	583313	1018299	231750	2502.4	4536.1	2429.3	1378.3	-82.5% (-84.8% to -80.2%)	-184.2% (-186.3% to -182.1%)	-31.9% (-32.8% to -31.0%)
6-Feb-22	51615	344772	884793	159596	1786.6	2700.8	1890.4	985.7	-81.2% (-84.0% to -78.5%)	-147.0% (-149.3% to -144.7%)	-64.9% (-66.2% to -63.6%)
13-Feb-22	42017	264366	839411	128278	1494.3	2044.6	1751.5	797.0	-85.3% (-88.5% to -82.2%)	-138.4% (-140.9% to -135.9%)	-93.1% (-94.8% to -91.4%)
20-Feb-22	33209	200489	750857	100923	1250.3	1628.2	1633.4	657.0	-88.0% (-91.6% to -84.4%)	-132.0% (-134.8% to -129.2%)	-118.1% (-120.2% to -116.1%)
27-Feb-22	24454	144037	614846	74831	1002.5	1246.0	1418.7	524.8	-88.3% (-92.6% to -84.2%)	-126.6% (-129.8% to -123.4%)	-139.5% (-142.2% to -136.9%)
6-Mar-22	18878	109575	543808	59904	838.4	1037.5	1335.0	446.6	-83.3% (-88.0% to -78.7%)	-116.5% (-120.0% to -113.1%)	-163.4% (-166.6% to -160.2%)
13-Mar-22	18039	104580	617982	60372	863.1	1072.1	1585.9	466.3	-75.6% (-80.2% to -71.2%)	-106.0% (-109.3% to -102.8%)	-195.8% (-199.3% to -192.3%)
20-Mar-22	20229	117728	790490	70018	1009.3	1279.1	2085.9	556.7	-71.7% (-75.9% to -67.6%)	-100.8% (-103.9% to -97.9%)	-224.9% (-228.5% to -221.4%)
27-Mar-22	24334	142964	1008836	85614	1262.0	1596.3	2714.8	689.7	-70.5% (-74.3% to -66.8%)	-100.3% (-103.1% to -97.7%)	-237.9% (-241.3% to -234.7%)

Table S7c: Vaccine effectiveness of over 50 years of age NIMS population (rolling four weeks cases reported weekly) since August 16, 2021 to March 27, 2022 until UKHSA stopped reporting data of weekly cases among age groups based on vaccination status. *SARS-CoV2 cases tested positive with the specimen date post receiving the first dose without additional doses of vaccination are considered one dose. †SARS-CoV2 cases tested positive with the specimen date ≥ 14 days post second dose **are** considered vaccinated with two doses. ‡ SARS-CoV2 cases tested positive with the specimen date ≥ 14 days post third dose **are** considered vaccinated with the third dose.

Table S8a-f: Proportion test of SARS-CoV2 cases, hospitalizations and deaths among NIMS vaccinated population of over 18 and over 50 years of age.

Study period (rolling 4 weeks)	Proportion of population (cases/population)				Compared groups	Statistical analysis Proportion test (X ² =; df=; p=value)
	All vaccinated	2 doses [†]	Third dose ∅	Unvaccinated		
Aug 16-Sept 12, 2021	0.009345	0.007892		0.009562	All vaccinated vs. Unvaccinated Two doses vs. Unvaccinated	X ² = 42.277, df = 1, p = 1 X ² = 2804.2, df = 1, p = 1
Aug 23-Sept 19, 2021	0.008373	0.007502		0.008265	All vaccinated vs. Unvaccinated Two doses vs. Unvaccinated	X ² = 11.686, df = 1, p = 0.0003149 X ² = 627.65, df = 1, p = 1
Aug 30-Sept 26, 2021	0.007877	0.007409		0.007233	All vaccinated vs. Unvaccinated Two doses vs. Unvaccinated	X ² = 448.21, df = 1, p < 0.001 X ² = 34.737, df = 1, p < 0.001
Sept 13-Oct 10, 2021	0.007797	0.008217		0.005835	All vaccinated vs. Unvaccinated Two doses vs. Unvaccinated	X ² = 4317.8, df = 1, p < 0.001 X ² = 5961.9, df = 1, p < 0.001
Oct 11-Nov 7, 2021	0.011865	0.015408		0.007851	All vaccinated vs. Unvaccinated Two doses vs. Unvaccinated	X ² = 11915, df = 1, p < 0.001 X ² = 32339, df = 1, p < 0.001
Nov 8-Dec 5, 2021	0.012292	0.022081		0.009371	All vaccinated vs. Unvaccinated Two doses vs. Unvaccinated	X ² = 5855.7, df = 1, p < 0.001 X ² = 61570, df = 1, p < 0.001
Dec 6, 2021-Jan 2, 2022	0.042753	0.160237		0.025204	All vaccinated vs. Unvaccinated Two doses vs. Unvaccinated	X ² = 62948, df = 1, p < 0.001 X ² = 1049374, df = 1, p < 0.001
Dec 20, 2021-Jan 16, 2022	0.052219	0.125527	0.030752	0.030378	All vaccinated vs. Unvaccinated Third dose vs. Unvaccinated Two doses vs. Unvaccinated Third dose vs. Two doses	X ² = 79651, df = 1, p < 0.001 X ² = 33.892, df = 1, p < 0.001 X ² = 582725, df = 1, p < 0.001 X ² = 1237850, df = 1, p = 1
	0.062683	0.097611	0.032960	0.027325	All vaccinated vs. Unvaccinated	X ² = 174246, df = 1, p < 0.001

Dec 27, 2021-Jan 23, 2022					Third dose vs. Unvaccinated Two doses vs. Unvaccinated Third dose vs. Two doses	$X^2 = 7433.2$, $df = 1$, $p < 0.001$ $X^2 = 384927$, $df = 1$, $p < 0.001$ $X^2 = 619910$, $df = 1$, $p = 1$
Jan 3-Jan 30, 2022	0.054101	0.070765	0.032843	0.024899	All vaccinated vs. Unvaccinated Third dose vs. Unvaccinated Two doses vs. Unvaccinated Third dose vs. Two doses	$X^2 = 135316$, $df = 1$, $p < 0.001$ $X^2 = 15037$, $df = 1$, $p < 0.001$ $X^2 = 207668$, $df = 1$, $p < 0.001$ $X^2 = 239234$, $df = 1$, $p = 1$
Jan 17-Feb 13, 2022	0.027963	0.033064	0.026779	0.013870	All vaccinated vs. Unvaccinated Third dose vs. Unvaccinated Two doses vs. Unvaccinated Third dose vs. Two doses	$X^2 = 60619$, $df = 1$, $p < 0.001$ $X^2 = 51150$, $df = 1$, $p < 0.001$ $X^2 = 71007$, $df = 1$, $p < 0.001$ $X^2 = 9227.7$, $df = 1$, $p = 1$
Jan 31-Feb 27, 2022	0.019099	0.018408	0.019462	0.008125	All vaccinated vs. Unvaccinated Third dose vs. Unvaccinated Two doses vs. Unvaccinated Third dose vs. Two doses	$X^2 = 53922$, $df = 1$, $p < 0.001$ $X^2 = 55147$, $df = 1$, $p < 0.001$ $X^2 = 35266$, $df = 1$, $p < 0.001$ $X^2 = 368.53$, $df = 1$, $p < 0.001$
Feb 14-Mar 13, 2022	0.018043	0.013551	0.019454	0.006577	All vaccinated vs. Unvaccinated Third dose vs. Unvaccinated Two doses vs. Unvaccinated Third dose vs. Two doses	$X^2 = 62838$, $df = 1$, $p < 0.001$ $X^2 = 72465$, $df = 1$, $p < 0.001$ $X^2 = 21090$, $df = 1$, $p < 0.001$ $X^2 = 12041$, $df = 1$, $p < 0.001$
Feb 28-Mar 27, 2022	0.028637	0.018738	0.031609	0.009353	All vaccinated vs. Unvaccinated Third dose vs. Unvaccinated Two doses vs. Unvaccinated Third dose vs. Two doses	$X^2 = 113642$, $df = 1$, $p < 0.001$ $X^2 = 135833$, $df = 1$, $p < 0.001$ $X^2 = 27278$, $df = 1$, $p < 0.001$ $X^2 = 36077$, $df = 1$, $p < 0.001$

Table S8a: Proportion test of SARS-CoV2 cases among NIMS vaccinated population of over 18 years of age since August 16, 2021 to March 27, 2022. †SARS-CoV2 cases tested positive with the specimen date ≥ 14 days post second dose are considered vaccinated with two doses. ‡ SARS-CoV2 cases tested positive with the specimen date ≥ 14 days post third dose are considered vaccinated with the third dose.

Study period (rolling 4 weeks)	Proportion of population (hospitalizations/population)				Groups compared	Statistical analysis Proportion test (X ² =; df=; pValue)
	All vaccinated	2 doses [†]	Third dose ∅	Unvaccinated		
Aug 16-Sept 12, 2021	0.000121	0.000120		0.000275	All vaccinated vs. Unvaccinated Two doses vs. Unvaccinated	X ² = 1292.9, df = 1, p = 1 X ² = 1286.1, df = 1, p = 1
Aug 23-Sept 19, 2021	0.000124	0.000123		0.000259	All vaccinated vs. Unvaccinated Two doses vs. Unvaccinated	X ² = 998.05, df = 1, p = 1 X ² = 985.86, df = 1, p = 1
Aug 30-Sept 26, 2021	0.000119	0.000119		0.000232	All vaccinated vs. Unvaccinated Two doses vs. Unvaccinated	X ² = 750.01, df = 1, p = 1 X ² = 721.94, df = 1, p = 1
Sept 13-Oct 10, 2021	0.000081	0.000087		0.000140	All vaccinated vs. Unvaccinated Two doses vs. Unvaccinated	X ² = 304.78, df = 1, p = 1 X-squared = 232.96, df = 1, p = 1
Oct 11-Nov 7, 2021	0.000169	0.000221		0.000269	All vaccinated vs. Unvaccinated Two doses vs. Unvaccinated	X ² = 429.48, df = 1, p = 1 X ² = 73.123, df = 1, p = 1
Nov 8-Dec 5, 2021	0.000120	0.000213		0.000270	All vaccinated vs. Unvaccinated Two doses vs. Unvaccinated	X ² = 1205.4, df = 1, p = 1 X ² = 96.403, df = 1, p = 1
Nov 22-Dec 19, 2021	0.000107	0.000281		0.000321	All vaccinated vs. Unvaccinated Two doses vs. Unvaccinated	X ² = 2407.3, df = 1, p = 1 X ² = 29.835, df = 1, p = 1
Dec 6, 2021-Jan 2, 2022	0.000141	0.000511		0.000341	All vaccinated vs. Unvaccinated Two doses vs. Unvaccinated	X ² = 1728.9, df = 1, p = 1 X ² = 332.3, df = 1, p < 0.001
Dec 20, 2021-Jan 16, 2022	0.000243	0.000472	0.000169	0.000366	All vaccinated vs. Unvaccinated Third dose vs. Unvaccinated Two doses vs. Unvaccinated Third dose vs. Two doses	X ² = 432.84, df = 1, p = 1 X ² = 1292.4, df = 1, p = 1 X ² = 121.31, df = 1, p < 0.001 X ² = 2625.6, df = 1, p = 1
Dec 27, 2021-Jan 23, 2022	0.000272	0.000470	0.000210	0.000343	All vaccinated vs. Unvaccinated Third dose vs. Unvaccinated Two doses vs. Unvaccinated	X ² = 133.64, df = 1, p = 1 X ² = 529.15, df = 1, p = 1 X ² = 178.58, df = 1, p < 0.001

					Third dose vs. Two doses	$\chi^2 = 1695.2, df = 1, p = 1$
Jan 10-Feb 6, 2022	0.000187	0.000258	0.000163	0.000187	All vaccinated vs. Unvaccinated Third dose vs. Unvaccinated Two doses vs. Unvaccinated Third dose vs. Two doses	$\chi^2 = 0.016292, df = 1, p = 0.5508$ $\chi^2 = 25.596, df = 1, p = 1$ $\chi^2 = 97.746, df = 1, p < 0.001$ $\chi^2 = 319.9, df = 1, p = 1$
Jan 17-Feb 13, 2022	0.000174	0.000221	0.000158	0.000156	All vaccinated vs. Unvaccinated Third dose vs. Unvaccinated Two doses vs. Unvaccinated Third dose vs. Two doses	$\chi^2 = 14.103, df = 1, p < 0.001$ $\chi^2 = 0.12568, df = 1, p = 0.3615$ $\chi^2 = 98.344, df = 1, p < 0.001$ $\chi^2 = 151.35, df = 1, p = 1$
Jan 24-Feb 20, 2022	0.000164	0.000183	0.000157	0.000131	All vaccinated vs. Unvaccinated Third dose vs. Unvaccinated Two doses vs. Unvaccinated Third dose vs. Two doses	$\chi^2 = 52.732, df = 1, p < 0.001$ $\chi^2 = 33.446, df = 1, p < 0.001$ $\chi^2 = 75.858, df = 1, p < 0.001$ $\chi^2 = 25.972, df = 1, p = 1$
Jan 31-Feb 27, 2022	0.000146	0.000147	0.000144	0.000111	All vaccinated vs. Unvaccinated Third dose vs. Unvaccinated Two doses vs. Unvaccinated Third dose vs. Two doses	$\chi^2 = 65.454, df = 1, p < 0.001$ $\chi^2 = 58.17, df = 1, p < 0.001$ $\chi^2 = 42.996, df = 1, p < 0.001$ $\chi^2 = 0.28271, df = 1, p = 0.7025$
Feb 14-Mar 13, 2022	0.000125	0.000107	0.000129	0.000084	All vaccinated vs. Unvaccinated Third dose vs. Unvaccinated Two doses vs. Unvaccinated Third dose vs. Two doses	$\chi^2 = 104.5, df = 1, p < 0.001$ $\chi^2 = 121.11, df = 1, p < 0.001$ $\chi^2 = 21.615, df = 1, p < 0.001$ $\chi^2 = 25.946, df = 1, p < 0.001$
Feb 28-Mar 27, 2022	0.000199	0.000150	0.000211	0.000120	All vaccinated vs. Unvaccinated Third dose vs. Unvaccinated Two doses vs. Unvaccinated Third dose vs. Two doses	$\chi^2 = 249.43, df = 1, p < 0.001$ $\chi^2 = 309.05, df = 1, p < 0.001$ $\chi^2 = 26.895, df = 1, p < 0.001$ $\chi^2 = 117.1, df = 1, p < 0.001$

Table S8b: Proportion test of SARS-CoV2 hospitalizations among NIMS vaccinated population of over 18 years of age since August 16, 2021 to March 27, 2022. †SARS-CoV2 cases tested positive with the specimen date ≥ 14 days post second dose **are** considered vaccinated with two doses. ‡ SARS-CoV2 cases tested positive with the specimen date ≥ 14 days post third dose **are** considered vaccinated with the third dose.

Study period (rolling 4 weeks)	Proportion of population (deaths/population)				Groups compared	Statistical analysis Proportion test (χ^2 =; df=; p=Value)
	All vaccinated	2 doses [†]	Third dose \emptyset	Unvaccinated		
Aug 16-Sept 12, 2021	0.000056	0.000057		0.000068	All vaccinated vs. Unvaccinated Two doses vs. Unvaccinated	$\chi^2 = 20.926$, df = 1, p = 1 $\chi^2 = 15.286$, df = 1, p = 1
Aug 23-Sept 19, 2021	0.000060	0.000062		0.000069	All vaccinated vs. Unvaccinated Two doses vs. Unvaccinated	$\chi^2 = 9.0561$, df = 1, p=0.9987 $\chi^2 = 5.8408$, df = 1, p = 0.9922
Aug 30-Sept 26, 2021	0.000062	0.000064		0.000065	All vaccinated vs. Unvaccinated Two doses vs. Unvaccinated	$\chi^2 = 1.5266$, df = 1, p = 0.8917 $\chi^2 = 0.26222$, df = 1, p = 0.6957
Sept 13-Oct 10, 2021	0.000056	0.000061		0.000053	All vaccinated vs. Unvaccinated Two doses vs. Unvaccinated	$\chi^2 = 0.84631$, df = 1, p= 0.1788 $\chi^2 = 7.6872$, df = 1, p = 0.002781
Oct 11-Nov 7, 2021	0.000070	0.000094		0.000057	All vaccinated vs. Unvaccinated Two doses vs. Unvaccinated	$\chi^2 = 20.339$, df = 1, p<0.001 $\chi^2 = 116.92$, df = 1, p<0.001
Nov 8-Dec 5, 2021	0.000064	0.000117		0.000071	All vaccinated vs. Unvaccinated Two doses vs. Unvaccinated	$\chi^2 = 6.4766$, df = 1, p= 0.9945 $\chi^2 = 136.46$, df = 1, p<0.001
Nov 22-Dec 19, 2021	0.000053	0.000143		0.000080	All vaccinated vs. Unvaccinated Two doses vs. Unvaccinated	$\chi^2 = 100.78$, df = 1, p = 1 $\chi^2 = 195.77$, df = 1, p<0.001
Dec 6, 2021-Jan 2, 2022	0.000051	0.000189		0.000084	All vaccinated vs. Unvaccinated Two doses vs. Unvaccinated	$\chi^2 = 154.01$, df = 1, p = 1 $\chi^2 = 390.22$, df = 1, p<0.001
Dec 20, 2021-Jan 16, 2022	0.000070	0.000163	0.000041	0.000107	All vaccinated vs. Unvaccinated Third dose vs. Unvaccinated Two doses vs. Unvaccinated Third dose vs. Two doses	$\chi^2 = 137.28$, df = 1, p<0.001 $\chi^2 = 542.63$, df = 1, p = 1 $\chi^2 = 104.52$, df = 1, p<0.001 $\chi^2 = 1455.7$, df = 1, p = 1
Dec 27, 2021-Jan 23, 2022	0.000088	0.000185	0.000060	0.000107	All vaccinated vs. Unvaccinated Third dose vs. Unvaccinated Two doses vs. Unvaccinated Third dose vs. Two doses	$\chi^2 = 30.094$, df = 1, p = 1 $\chi^2 = 223.02$, df = 1, p = 1 $\chi^2 = 185.8$, df = 1, p<0.001 $\chi^2 = 1186$, df = 1, p = 1

Jan 10-Feb 6, 2022	0.000123	0.000201	0.000102	0.000097	All vaccinated vs. Unvaccinated Third dose vs. Unvaccinated Two doses vs. Unvaccinated Third dose vs. Two doses	$\chi^2 = 41.017$, df = 1, $p < 0.001$ $\chi^2 = 1.7226$, df = 1, $p = 0.09468$ $\chi^2 = 316.69$, df = 1, $p < 0.001$ $\chi^2 = 506.48$, df = 1, $p = 1$
Jan 17-Feb 13, 2022	0.000118	0.000169	0.000106	0.000078	All vaccinated vs. Unvaccinated Third dose vs. Unvaccinated Two doses vs. Unvaccinated Third dose vs. Two doses	$\chi^2 = 107.58$, df = 1, $p < 0.001$ $\chi^2 = 53.465$, df = 1, $p < 0.001$ $\chi^2 = 291.24$, df = 1, $p < 0.001$ $\chi^2 = 213.81$, df = 1, $p = 1$
Jan 24-Feb 20, 2022	0.000105	0.000131	0.000100	0.000060	All vaccinated vs. Unvaccinated Third dose vs. Unvaccinated Two doses vs. Unvaccinated Third dose vs. Two doses	$\chi^2 = 156.88$, df = 1, $p < 0.001$ $\chi^2 = 122.84$, df = 1, $p < 0.001$ $\chi^2 = 229.37$, df = 1, $p < 0.001$ $\chi^2 = 57.692$, df = 1, $p = 1$
Jan 31-Feb 27, 2022	0.000086	0.000093	0.000086	0.000043	All vaccinated vs. Unvaccinated Third dose vs. Unvaccinated Two doses vs. Unvaccinated Third dose vs. Two doses	$\chi^2 = 181.54$, df = 1, $p < 0.001$ $\chi^2 = 171.55$, df = 1, $p < 0.001$ $\chi^2 = 159.44$, df = 1, $p < 0.001$ $\chi^2 = 3.5199$, df = 1, $p = 0.9697$
Feb 14-Mar 13, 2022	0.000053	0.000049	0.000055	0.000026	All vaccinated vs. Unvaccinated Third dose vs. Unvaccinated Two doses vs. Unvaccinated Third dose vs. Two doses	$\chi^2 = 115.23$, df = 1, $p < 0.001$ $\chi^2 = 122.59$, df = 1, $p < 0.001$ $\chi^2 = 64.207$, df = 1, $p < 0.001$ $V = 2.8687$, df = 1, $p = 0.04516$
Feb 28-Mar 27, 2022	0.000043	0.000028	0.000049	0.000023	All vaccinated vs. Unvaccinated Third dose vs. Unvaccinated Two doses vs. Unvaccinated Third dose vs. Two doses	$\chi^2 = 74.306$, df = 1, $p < 0.001$ $\chi^2 = 106.86$, df = 1, $p < 0.001$ $\chi^2 = 3.5483$, df = 1, $p = 0.0298$ $\chi^2 = 58.664$, df = 1, $p < 0.001$

Table S8c: Proportion test of SARS-CoV2 deaths among NIMS vaccinated population of over 18 years of age from August 16, 2021 to March 27, 2022. †SARS-CoV2 cases tested positive with the specimen date ≥ 14 days post second dose **are** considered vaccinated with two doses. ∅ SARS-CoV2 cases tested positive with the specimen date ≥ 14 days post third dose **are** considered vaccinated with the third dose.

Study period (rolling 4 weeks*)	Proportion of population (cases/population)				Compared groups	Statistical analysis Proportion test (X2=; df=; pValue)
	All vaccinated	2 doses [‡]	Third dose [∅]	Unvaccinated		
until June 20, 2021 (Delta Variant)	0.000486989	0.000269881		0.000575473	All vaccinated vs. Unvaccinated Two doses vs. Unvaccinated	X ² = 31.212, df = 1, p = 1 X ² = 612.53, df = 1, p = 1
June 21-July 18, 2021 (Delta Variant)	0.000441024	0.000413819		0.000504709	All vaccinated vs. Unvaccinated Two doses vs. Unvaccinated	X ² = 17.288, df = 1, p = 1 X ² = 37.234, df = 1, p = 1
July 19-Aug 1, 2021 (Delta Variant)	0.000413326	0.000404604		0.000526581	All vaccinated vs. Unvaccinated Two doses vs. Unvaccinated	X ² = 57.242, df = 1, p = 1 X ² = 67.473, df = 1, p = 1
Aug 2-Aug 15, 2021 (Delta Variant)	0.000578857	0.000569373		0.000699815	All vaccinated vs. Unvaccinated Two doses vs. Unvaccinated	X ² = 46.5, df = 1, p = 1 X ² = 54.749, df = 1, p = 1
Aug 30-Sept 12, 2021 (Delta Variant)	0.000938593	0.00092997		0.000891319	All vaccinated vs. Unvaccinated Two doses vs. Unvaccinated	X ² = 4.4235, df = 1, p = 0.018 X ² = 2.9683, df = 1, p = 0.042
Aug 16-Sept 12, 2021*	0.00714124	0.00711672		0.00551307	All vaccinated vs. Unvaccinated Two doses vs. Unvaccinated	X ² = 708.94, df = 1, p<0.001 X ² = 688.86, df = 1, p<0.001
Aug 23-Sept 19, 2021*	0.00675283	0.00674656		0.00503149	All vaccinated vs. Unvaccinated Two doses vs. Unvaccinated	X ² = 837.18, df = 1, p<0.001 X ² = 830.53, df = 1, p<0.001
Aug 30-Sept 26, 2021*	0.00635938	0.00646325		0.00449816	All vaccinated vs. Unvaccinated Two doses vs. Unvaccinated	X ² = 1039.4, df = 1, p<0.001 X ² = 1138.5, df = 1, p<0.001
Sept 13-Oct 10, 2021*	0.00635639	0.00712503		0.00381063	All vaccinated vs. Unvaccinated Two doses vs. Unvaccinated	X ² = 1954.1, df = p<0.001 v = 2953.9, df = 1, p<0.001
Oct 11-Nov 7, 2021*	0.01033954	0.01672072		0.00557227	All vaccinated vs. Unvaccinated Two doses vs. Unvaccinated	X ² = 4197.6, df = 1, p<0.001 X ² = 14260, df = 1, p<0.001
Nov 8-Dec 5, 2021*	0.00883519	0.03083521		0.00651932	All vaccinated vs. Unvaccinated Two doses vs. Unvaccinated	X ² = 1119, df = 1, p<0.001 X ² = 35890, df = 1, p<0.001
Dec 6, 2021-Jan 2, 2022*	0.02429517	0.23991204		0.01421828	All vaccinated vs. Unvaccinated Two doses vs. Unvaccinated	X ² = 7742.2, df = 1, p<0.001 X ² = 441724, df = 1, p<0.001
Dec 20, 2021-Jan 16, 2022*	0.03417810	0.08823135	0.02910401	0.01783886	All vaccinated vs. Unvaccinated Third dose vs. Unvaccinated Two doses vs. Unvaccinated	X ² = 14577, df = 1, p<0.001 X ² = 7987, df = 1, p<0.001 X ² = 91810, df = 1, p<0.001

					Third dose vs. Two doses	$X^2 = 168485$, $df = 1$, $p = 1$
Dec 27, 2021-Jan 23, 2022*	0.03200767	0.06802698	0.02876190	0.01625914	All vaccinated vs. Unvaccinated Third dose vs. Unvaccinated Two doses vs. Unvaccinated Third dose vs. Two doses	$X^2 = 14404$, $df = 1$, $p < 0.001$ $X^2 = 9969.2$, $df = 1$, $p < 0.001$ $X^2 = 61097$, $df = 1$, $p < 0.001$ $X^2 = 76888$, $df = 1$, $p = 1$
Jan 3-Jan 30, 2022*	0.02597837	0.04536145	0.02429350	0.01378302	All vaccinated vs. Unvaccinated Third dose vs. Unvaccinated Two doses vs. Unvaccinated Third dose vs. Two doses	$X^2 = 10531$, $df = 1$, $p < 0.001$ $X^2 = 8281.8$, $df = 1$, $p < 0.001$ $X^2 = 31550$, $df = 1$, $p < 0.001$ $X^2 = 26421$, $df = 1$, $p = 1$
Jan 17-Feb 13, 2022*	0.01770613	0.02044630	0.01751527	0.00797034	All vaccinated vs. Unvaccinated Third dose vs. Unvaccinated Two doses vs. Unvaccinated Third dose vs. Two doses	$X^2 = 9808.3$, $df = 1$, $p < 0.001$ $X^2 = 9486.1$, $df = 1$, $p < 0.001$ $X^2 = 9912.7$, $df = 1$, $p < 0.001$ $X^2 = 722.09$, $df = 1$, $p = 1$
Jan 31-Feb 27, 2022*	0.01292623	0.01245956	0.01418682	0.00524788	All vaccinated vs. Unvaccinated Third dose vs. Unvaccinated Two doses vs. Unvaccinated Third dose vs. Two doses	$X^2 = 8334.2$, $df = 1$, $p < 0.001$ $X^2 = 10303$, $df = 1$, $p < 0.001$ $X^2 = 5228.9$, $df = 1$, $p < 0.001$ $X^2 = 309.3$, $df = 1$, $p < 0.001$
Feb 14-Mar 13, 2022*	0.01538218	0.01072085	0.01585947	0.00466257	All vaccinated vs. Unvaccinated Third dose vs. Unvaccinated Two doses vs. Unvaccinated Third dose vs. Two doses	$X^2 = 13786$, $df = 1$, $p < 0.001$ $X^2 = 14569$, $df = 1$, $p < 0.001$ $X^2 = 4210.6$, $df = 1$, $p < 0.001$ $X^2 = 2455.8$, $df = 1$, $p < 0.001$
Feb 28-Mar 27, 2022*	0.02480554	0.01596269	0.02718747	0.00689690	All vaccinated vs. Unvaccinated Third dose vs. Unvaccinated Two doses vs. Unvaccinated Third dose vs. Two doses	$X^2 = 24098$, $df = 1$, $p < 0.001$ $X^2 = 28284$, $df = 1$, $p < 0.001$ $X^2 = 6334.1$, $df = 1$, $p < 0.001$ $X^2 = 6868.5$, $df = 1$, $p < 0.001$

Table S8d: Proportion test of SARS-CoV2 cases among NIMS vaccinated population of over 50 years of age from August 16, 2021 to March 27, 2022 and the Delta variant cases until September 12, 2021. †SARS-CoV2 cases tested positive with the specimen date ≥ 14 days post second dose are considered vaccinated with two doses. ‡ SARS-CoV2 cases tested positive with the specimen date ≥ 14 days post third dose are considered vaccinated with the third dose.

Study period (rolling 4 weeks*)	Proportion of population (hospitalizations/population)				Compared groups	Statistical analysis Proportion test (X2=; df=; pValue)
	All vaccinated	2 doses [‡]	Third dose ∅	Unvaccinated		
until June 20, 2021 (Delta Variant)	0.00002049	0.00001366		0.00008857	All vaccinated vs. Unvaccinated Two doses vs. Unvaccinated	X ² = 336.46, df = 1, p = 1 X ² = 517.31, df = 1, p = 1
June 21-July 18, 2021 (Delta Variant)	0.00002434	0.00002212		0.00011556	All vaccinated vs. Unvaccinated Two doses vs. Unvaccinated	X ² = 482.5, df = 1, p = 1 X ² = 533.6, df = 1, p = 1
July 19-Aug 1, 2021 (Delta Variant)	0.00002313	0.00002153		0.00010980	All vaccinated vs. Unvaccinated Two doses vs. Unvaccinated	X ² = 454.62, df = 1, p = 1 X ² = 490.35, df = 1, p = 1
Aug 2-Aug 15, 2021 (Delta Variant)	0.00003779	0.00003545		0.00015385	All vaccinated vs. Unvaccinated Two doses vs. Unvaccinated	X ² = 520.52, df = 1, p = 1 X ² = 562.56, df = 1, p = 1
Aug 16-Aug 29, 2021*	0.00004241	0.00004067		0.00016193	All vaccinated vs. Unvaccinated Two doses vs. Unvaccinated	X ² = 498.22, df = 1, p = 1 X ² = 525.21, df = 1, p = 1
Aug 16-Sept 12, 2021*	0.00019764	0.00019316		0.00066460	All vaccinated vs. Unvaccinated Two doses vs. Unvaccinated	X ² = 1686, df = 1, p = 1 X ² = 1738.6, df = 1, p = 1
Aug 23-Sept 19, 2021*	0.00020657	0.00020296		0.00065748	All vaccinated vs. Unvaccinated Two doses vs. Unvaccinated	X ² = 1520.9, df = 1, p = 1 X ² = 1557.6, df = 1, p = 1
Aug 30-Sept 26, 2021*	0.00019658	0.00019615		0.00058376	All vaccinated vs. Unvaccinated Two doses vs. Unvaccinated	X ² = 1194.4, df = 1, p = 1 X ² = 1188.7, df = 1, p = 1
Sept 13-Oct 10, 2021*	0.00013129	0.00014412		0.00032709	All vaccinated vs. Unvaccinated Two doses vs. Unvaccinated	X ² = 471.89, df = 1, p = 1 X ² = 372.25, df = 1, p = 1
Oct 11-Nov 7, 2021*	0.00028050	0.00044881		0.00069854	All vaccinated vs. Unvaccinated Two doses vs. Unvaccinated	X ² = 997.52, df = 1, p = 1 X ² = 221.12, df = 1, p = 1
Nov 8-Dec 5, 2021*	0.00018716	0.00063849		0.00074169	All vaccinated vs. Unvaccinated Two doses vs. Unvaccinated	X ² = 2331.7, df = 1, p = 1 X ² = 23.277, df = 1, p = 1
Dec 6, 2021-Jan 2, 2022*	0.00020196	0.00191293		0.00092076	All vaccinated vs. Unvaccinated Two doses vs. Unvaccinated	X ² = 3428.6, df = 1, p = 1 X ² = 678.34, df = 1, p<0.001
Dec 20, 2021-Jan 16, 2022*	0.00035854	0.00140191	0.00024814	0.00099393	All vaccinated vs. Unvaccinated Third dose vs. Unvaccinated Two doses vs. Unvaccinated	X ² = 1697, df = 1, p = 1 X ² = 3010.4, df = 1, p = 1 X ² = 126.61, df = 1, p<0.001

					Third dose vs. Two doses	$X^2 = 6101.6$, $df = 1$, $p = 1$
Dec 27, 2021-Jan 23, 2022*	0.00041049	0.00142582	0.00030687	0.00092962	All vaccinated vs. Unvaccinated Third dose vs. Unvaccinated Two doses vs. Unvaccinated Third dose vs. Two doses	$X^2 = 1024.9$, $df = 1$, $p = 1$ $X^2 = 1823.1$, $df = 1$, $p = 1$ $X^2 = 188.07$, $df = 1$, $p < 0.001$ $X^2 = 4841.4$, $df = 1$, $p = 1$
Jan 17-Feb 13, 2022*	0.00025935	0.00062660	0.00022149	0.00042185	All vaccinated vs. Unvaccinated Third dose vs. Unvaccinated Two doses vs. Unvaccinated Third dose vs. Two doses	$X^2 = 165.77$, $df = 1$, $p = 1$ $X^2 = 284.7$, $df = 1$, $p = 1$ $X^2 = 69.562$, $df = 1$, $p < 0.001$ $X^2 = 948.59$, $df = 1$, $p = 1$
Jan 31-Feb 27, 2022*	0.00022910	0.00044469	0.00020744	0.00029924	All vaccinated vs. Unvaccinated Third dose vs. Unvaccinated Two doses vs. Unvaccinated Third dose vs. Two doses	$X^2 = 35.636$, $df = 1$, $p = 1$ $X^2 = 66.058$, $df = 1$, $p = 1$ $X^2 = 48.828$, $df = 1$, $p < 0.001$ $X^2 = 357.61$, $df = 1$, $p = 1$
Feb 14-Mar 13, 2022*	0.00020319	0.00033807	0.00019016	0.00021887	All vaccinated vs. Unvaccinated Third dose vs. Unvaccinated Two doses vs. Unvaccinated Third dose vs. Two doses	$X^2 = 1.9844$, $df = 1$, p -value = 0.92 $X^2 = 7.1195$, $df = 1$, p -value = 0.996 $X^2 = 43.462$, $df = 1$, $p < 0.001$ $X^2 = 153.28$, $df = 1$, $p = 1$
Feb 28-Mar 27, 2022*	0.00032888	0.00045991	0.00031621	0.00028400	All vaccinated vs. Unvaccinated Third dose vs. Unvaccinated Two doses vs. Unvaccinated Third dose vs. Two doses	$X^2 = 10.468$, $df = 1$, $p < 0.001$ $X^2 = 5.523$, $df = 1$, $p = 0.0093$ $X^2 = 70.784$, $df = 1$, $p < 0.001$ $X^2 = 87.958$, $df = 1$, $p = 1$

Table S8e: Proportion test of SARS-CoV2 hospitalizations among NIMS vaccinated population of over 50 years of age from August 16, 2021 to March 27, 2022 and the Delta variant cases until September 12, 2021. *SARS-CoV2 cases tested positive with the specimen date ≥ 14 days post second dose are considered vaccinated with two doses. \emptyset SARS-CoV2 cases tested positive with the specimen date ≥ 14 days post third dose are considered vaccinated with the third dose.

Study period (rolling 4 weeks*)	Proportion of population (deaths/population)				Compared groups	Statistical analysis Proportion test (X ² =; df=; pValue)
	All vaccinated	2 doses [‡]	Third dose [∅]	Unvaccinated		
until June 20, 2021 (Delta Variant)	0.00000778	0.00000598		0.00003225	All vaccinated vs. Unvaccinated Two doses vs. Unvaccinated	X ² = 114.41, df = 1, p = 1 X ² = 154.52, df = 1, p = 1
June 21-July 18, 2021 (Delta Variant)	0.00000594	0.00000525		0.00002830	All vaccinated vs. Unvaccinated Two doses vs. Unvaccinated	X ² = 116.63, df = 1, p = 1 X ² = 132.9, df = 1, p = 1
July 19-Aug 1, 2021 (Delta Variant)	0.00000887	0.00000850		0.00003533	All vaccinated vs. Unvaccinated Two doses vs. Unvaccinated	X ² = 115.01, df = 1, p = 1 X ² = 120.95, df = 1, p = 1
Aug 2-Aug 15, 2021 (Delta Variant)	0.00001395	0.00001319		0.00005450	All vaccinated vs. Unvaccinated Two doses vs. Unvaccinated	X ² = 172.67, df = 1, p = 1 X ² = 185.31, df = 1, p = 1
Aug 30-Sept 12, 2021 (Delta Variant)	0.00002138	0.00002011		0.00005787	All vaccinated vs. Unvaccinated Two doses vs. Unvaccinated	X ² = 99.209, df = 1, p = 1 X ² = 110.91, df = 1, p = 1
Aug 16-Sept 12, 2021*	0.000105248	0.00010247		0.00029315	All vaccinated vs. Unvaccinated Two doses vs. Unvaccinated	X ² = 534.8, df = 1, p = 1 X ² = 559.64, df = 1, p = 1
Aug 23-Sept 19, 2021*	0.00011445	0.00011185		0.00030198	All vaccinated vs. Unvaccinated Two doses vs. Unvaccinated	X ² = 494.27, df = 1, p = 1 X ² = 515, df = 1, p-value = 1
Aug 30-Sept 26, 2021*	0.00011705	0.00011634		0.00028868	All vaccinated vs. Unvaccinated Two doses vs. Unvaccinated	X ² = 409.22, df = 1, p = 1 X ² = 411.49, df = 1, p = 1
Sept 13-Oct 10, 2021*	0.00010668	0.00011701		0.00024135	All vaccinated vs. Unvaccinated Two doses vs. Unvaccinated	X ² = 279.44, df = 1, p = 1 X ² = 215.47, df = 1, p = 1
Oct 11-Nov 7, 2021*	0.00013501	0.00021503		0.00025680	All vaccinated vs. Unvaccinated Two doses vs. Unvaccinated	X ² = 183.77, df = 1, p = 1 X ² = 13.381, df = 1, p = 0.9999
Nov 8-Dec 5, 2021*	0.00012198	0.00041925		0.00031641	All vaccinated vs. Unvaccinated Two doses vs. Unvaccinated	X ² = 484.81, df = 1, p = 1 X ² = 39.061, df = 1, p<0.001
Dec 6, 2021-Jan 2, 2022*	0.00009639	0.00091918		0.00036390	All vaccinated vs. Unvaccinated Two doses vs. Unvaccinated	X ² = 1046.9, df = 1, p = 1 X ² = 467.11, df = 1, p<0.001
Dec 20, 2021-Jan 16, 2022*	0.00013310	0.00077283	0.00006678	0.00047476	All vaccinated vs. Unvaccinated Third dose vs. Unvaccinated Two doses vs. Unvaccinated	X ² = 1247.8, df = 1, p = 1 X ² = 2731.4, df = 1, p = 1 X ² = 129.96, df = 1, p<0.001

					Third dose vs. Two doses	$X^2 = 6227.2$, $df = 1$, $p = 1$
Dec 27, 2021-Jan 23, 2022*	0.00016911	0.00088350	0.00009779	0.00047887	All vaccinated vs. Unvaccinated Third dose vs. Unvaccinated Two doses vs. Unvaccinated Third dose vs. Two doses	$X^2 = 848.38$, $df = 1$, $p = 1$ $X^2 = 1870.2$, $df = 1$, $p = 1$ $X^2 = 217.07$, $df = 1$, $p < 0.001$ $X^2 = 5852.6$, $df = 1$, $p = 1$
Jan 3-Jan 30, 2022*	0.00021155	0.00099077	0.00013624	0.00048501	All vaccinated vs. Unvaccinated Third dose vs. Unvaccinated Two doses vs. Unvaccinated Third dose vs. Two doses	$X^2 = 548.74$, $df = 1$, $p = 1$ $X^2 = 1234.4$, $df = 1$, $p = 1$ $X^2 = 310.4$, $df = 1$, $p < 0.001$ $X^2 = 5361.9$, $df = 1$, $p = 1$
Jan 17-Feb 13, 2022*	0.00022885	0.00081722	0.00017383	0.00035145	All vaccinated vs. Unvaccinated Third dose vs. Unvaccinated Two doses vs. Unvaccinated Third dose vs. Two doses	$X^2 = 107.58$, $df = 1$, $p = 1$ $X^2 = 282.23$, $df = 1$, $p = 1$ $X^2 = 329.59$, $df = 1$, $p < 0.001$ $X^2 = 2704.6$, $df = 1$, $p = 1$
Jan 31-Feb 27, 2022*	0.00016817	0.00044276	0.00014243	0.00019183	All vaccinated vs. Unvaccinated Third dose vs. Unvaccinated Two doses vs. Unvaccinated Third dose vs. Two doses	$X^2 = 5.5114$, $df = 1$, $p\text{-value} = 0.9906$ $X^2 = 27.948$, $df = 1$, $p = 1$ $X^2 = 174.2$, $df = 1$, $p < 0.001$ $X^2 = 782.09$, $df = 1$, $p = 1$
Feb 14-Mar 13, 2022*	0.00010368	0.00023821	0.00009147	0.00011559	All vaccinated vs. Unvaccinated Third dose vs. Unvaccinated Two doses vs. Unvaccinated Third dose vs. Two doses	$X^2 = 2.2098$, $df = 1$, $p\text{-value} = 0.9314$ $X^2 = 10.304$, $df = 1$, $p\text{-value} = 0.9993$ $X^2 = 73.402$, $df = 1$, $p < 0.001$ $X^2 = 296.23$, $df = 1$, $p = 1$
Feb 28-Mar 27, 2022*	0.00008413	0.00013235	0.00008154	0.00010663	All vaccinated vs. Unvaccinated Third dose vs. Unvaccinated Two doses vs. Unvaccinated Third dose vs. Two doses	$X^2 = 9.8147$, $df = 1$, $p\text{-value} = 0.9991$ $X^2 = 12.465$, $df = 1$, $p\text{-value} = 0.9998$ $X^2 = 4.4595$, $df = 1$, $p\text{-value} = 0.0173$ $X^2 = 41.747$, $df = 1$, $p = 1$

Table S8f: Proportion test of SARS-CoV2 deaths among NIMS vaccinated population of over 50 years of age from August 16, 2021 to March 27, 2022 and the Delta variant cases until September 12, 2021. *SARS-CoV2 cases tested positive with the specimen date ≥ 14 days

post second dose **are** considered vaccinated with two doses. ^Ø SARS-CoV2 cases tested positive with the specimen date ≥ 14 days post third dose **are** considered vaccinated with the third dose.

REFERENCES:

1. Andrews N, Stowe J, Kirsebom F, et al. Covid-19 Vaccine Effectiveness against the Omicron (B.1.1.529) Variant. *New England Journal of Medicine*. 2022;386(16):1532-1546. doi:10.1056/NEJMoa2119451
2. National Health Service (NHS) England. COVID-19 Hospital Activity. Accessed October 22, 2021. <https://www.england.nhs.uk/statistics/statistical-work-areas/covid-19-hospital-activity/>
3. NHS England and NHS Improvement. COVID-19 Daily Deaths. <https://www.england.nhs.uk/statistics/statistical-work-areas/covid-19-daily-deaths/>
4. UK Prime Minister's Office. Schools and colleges to reopen from tomorrow as part of Step One of the roadmap. Published online 2021. Accessed March 6, 2021. <https://www.gov.uk/government/news/schools-and-colleges-to-reopen-from-tomorrow-as-part-of-step-one-of-the-roadmap>
5. UK Prime Minister's Office. Further easing of Covid restrictions confirmed for 12 April -Outdoor pubs, shops, gyms and hairdressers to reopen. Published online 2021. Accessed April 4, 2021. <https://www.gov.uk/government/news/further-easing-of-covid-restrictions-confirmed-for-12-april>
6. UK Prime Minister's Office. Further easing of COVID restrictions confirmed for 17 May -Planned Step 3 easements will go ahead on 17 May. Published online 2021. Accessed May 9, 2021. <https://www.gov.uk/government/news/further-easing-of-covid-restrictions-confirmed-for-17-may>
7. UK Prime Minister's Office. Prime Minister to set out plans ahead of step 4 . Published online 2021. Accessed July 4, 2021. <https://www.gov.uk/government/news/prime-minister-to-set-out-plans-ahead-of-step-4>