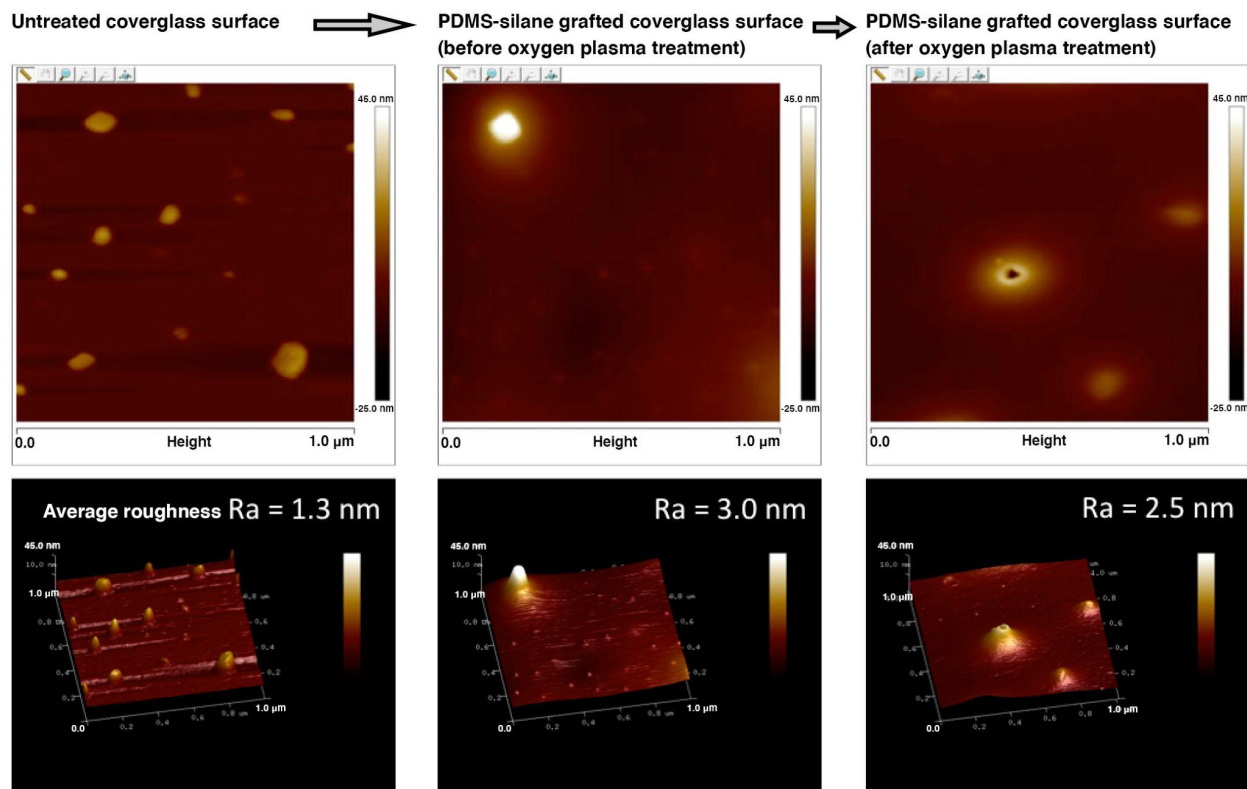


Supplementary Information

Application of under-oil open microfluidic systems for rapid cloud lab phenotypic antimicrobial susceptibility testing

Chao Li, Sue McCrone, Jay W. Warrick, David R. Andes, Zachary Hite, Cecilia F. Volk, Warren E. Rose and David J. Beebe



Supplementary Fig. 1 Atomic force microscopy (AFM) characterization of a glass surface before and after PDMS-silane RT-CVD treatment and oxygen plasma treatment for surface patterning.

P. aeruginosa
(Control/no drug)

0 h

1 h

2 h

3 h

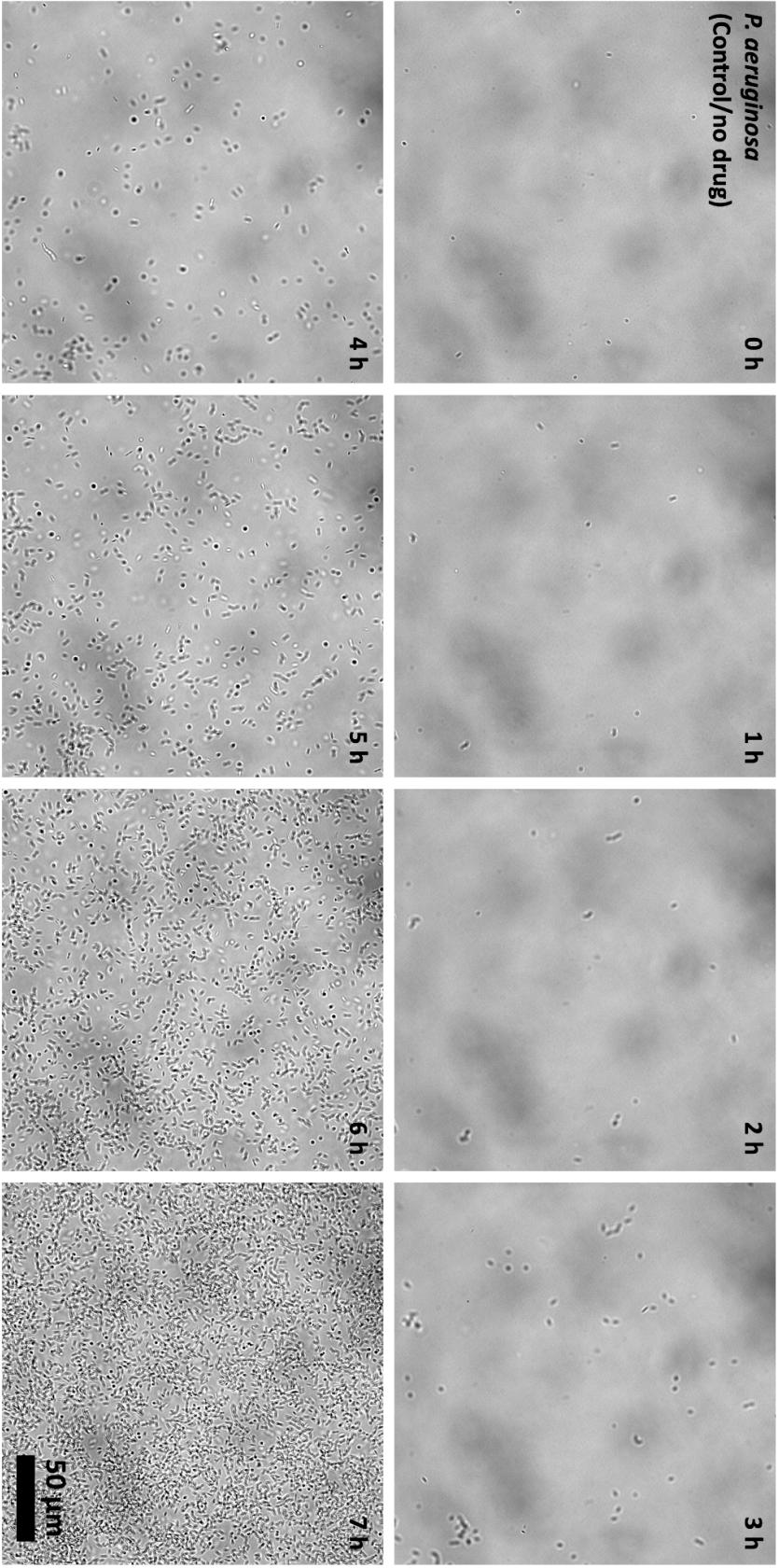
4 h

5 h

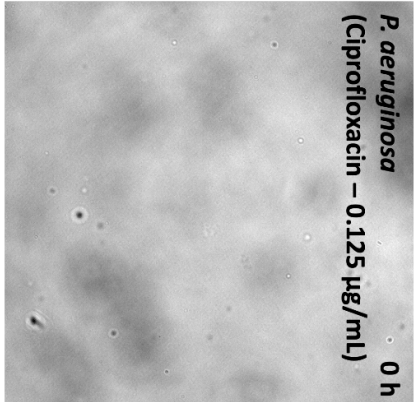
6 h

7 h

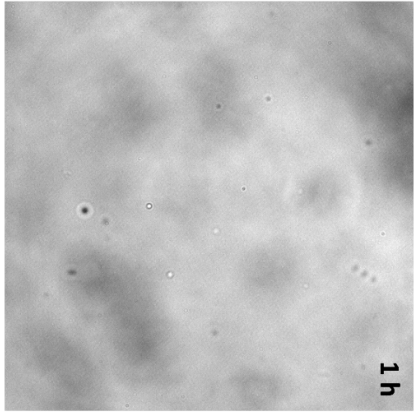
50 μ m



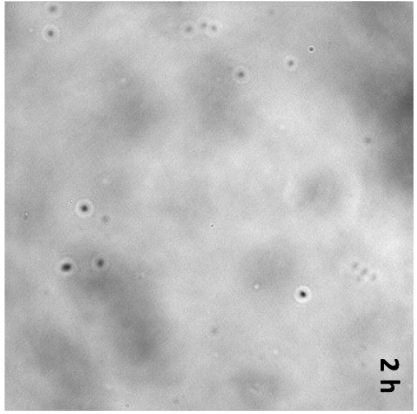
P. aeruginosa
(Ciprofloxacin – 0.125 µg/mL) 0 h



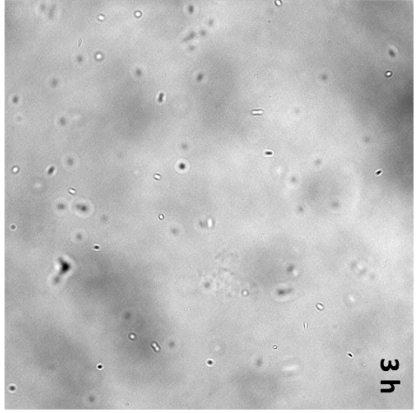
1 h



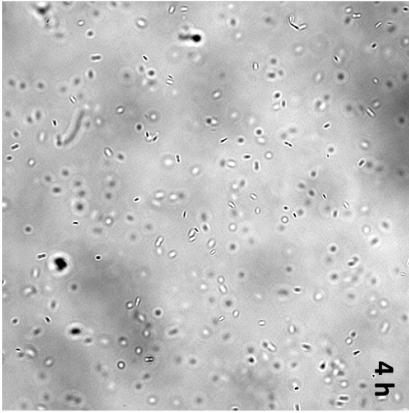
2 h



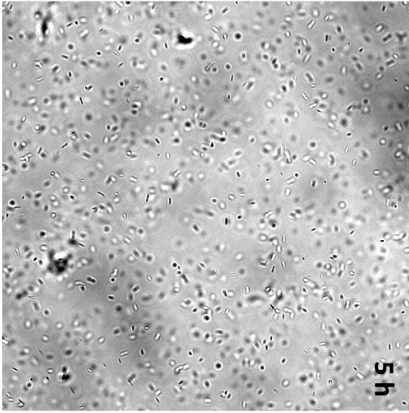
3 h



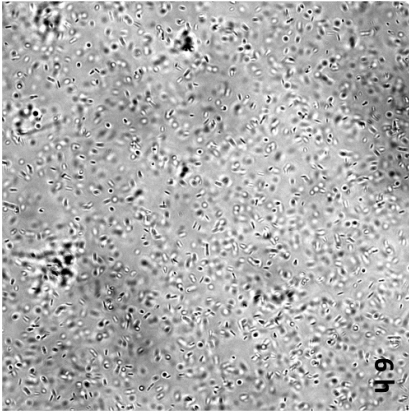
4 h



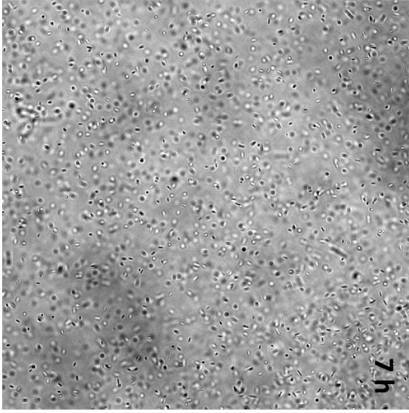
5 h



6 h



7 h



P. aeruginosa
(Ciprofloxacin – 0.5 µg/mL)

0 h

1 h

2 h

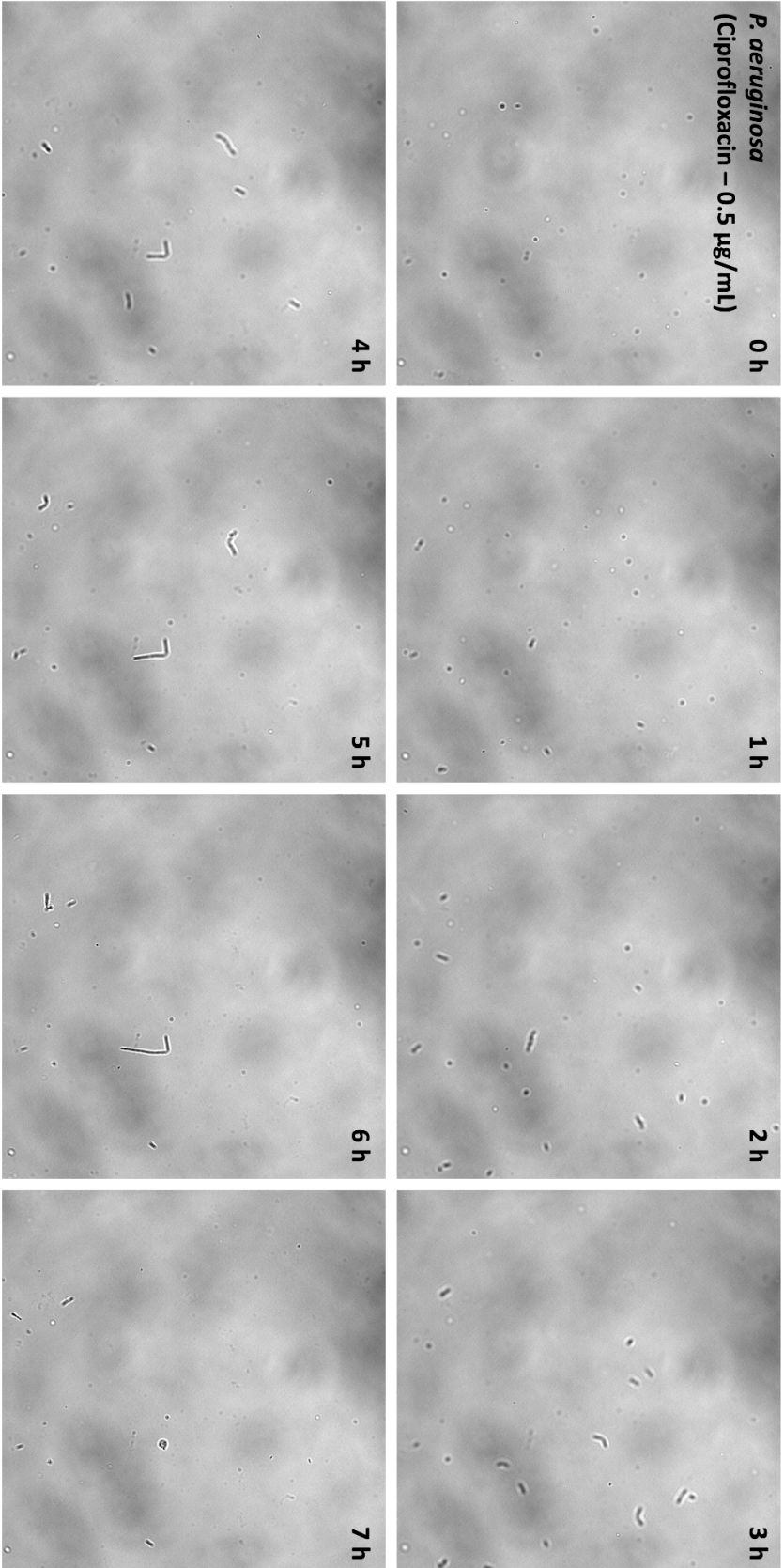
3 h

4 h

5 h

6 h

7 h



P. aeruginosa
(Ciprofloxacin – 5 µg/mL)

0 h

1 h

2 h

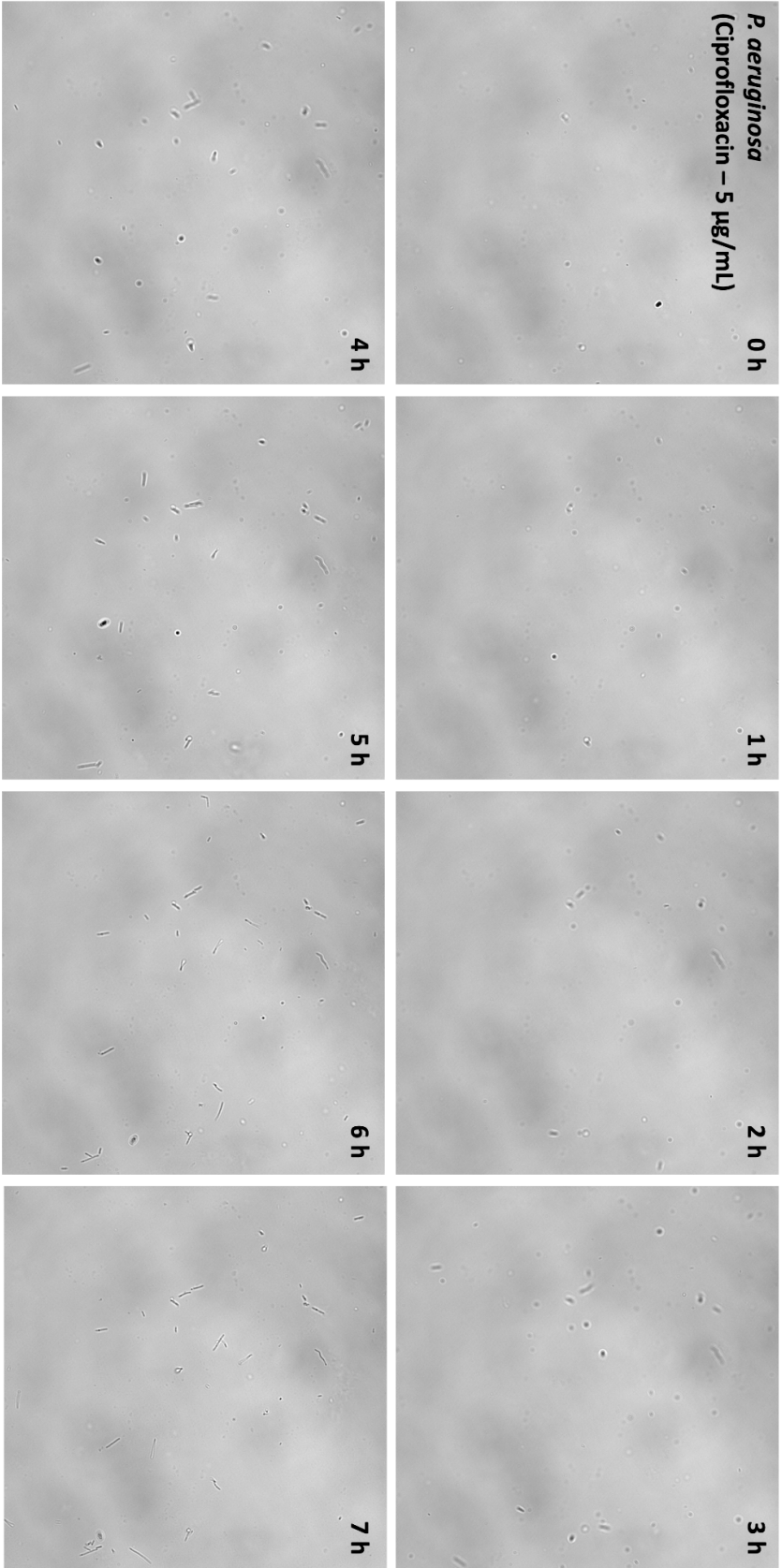
3 h

4 h

5 h

6 h

7 h



P. aeruginosa
(Gentamicin – 1 µg/mL)

0 h

1 h

2 h

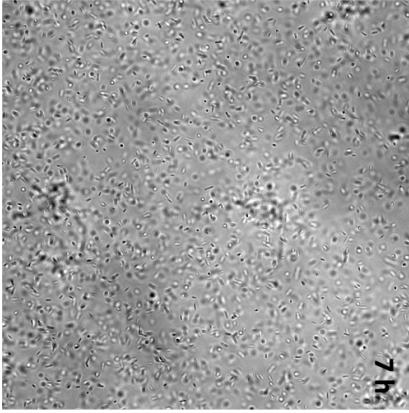
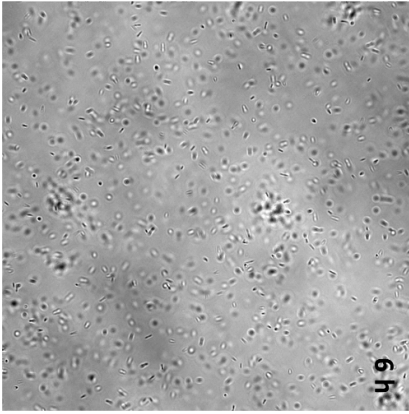
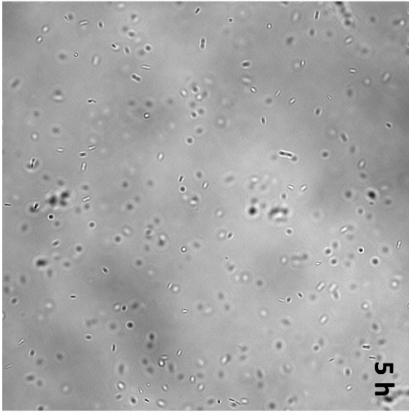
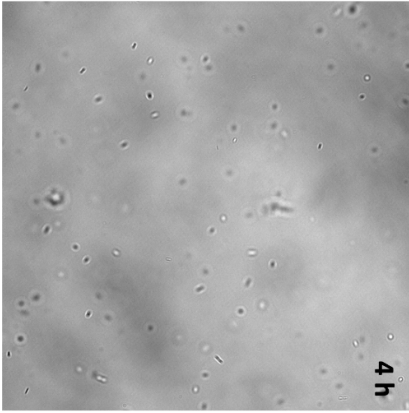
3 h

4 h

5 h

6 h

7 h



P. aeruginosa
(Gentamicin – 2 µg/mL)

0 h

1 h

2 h

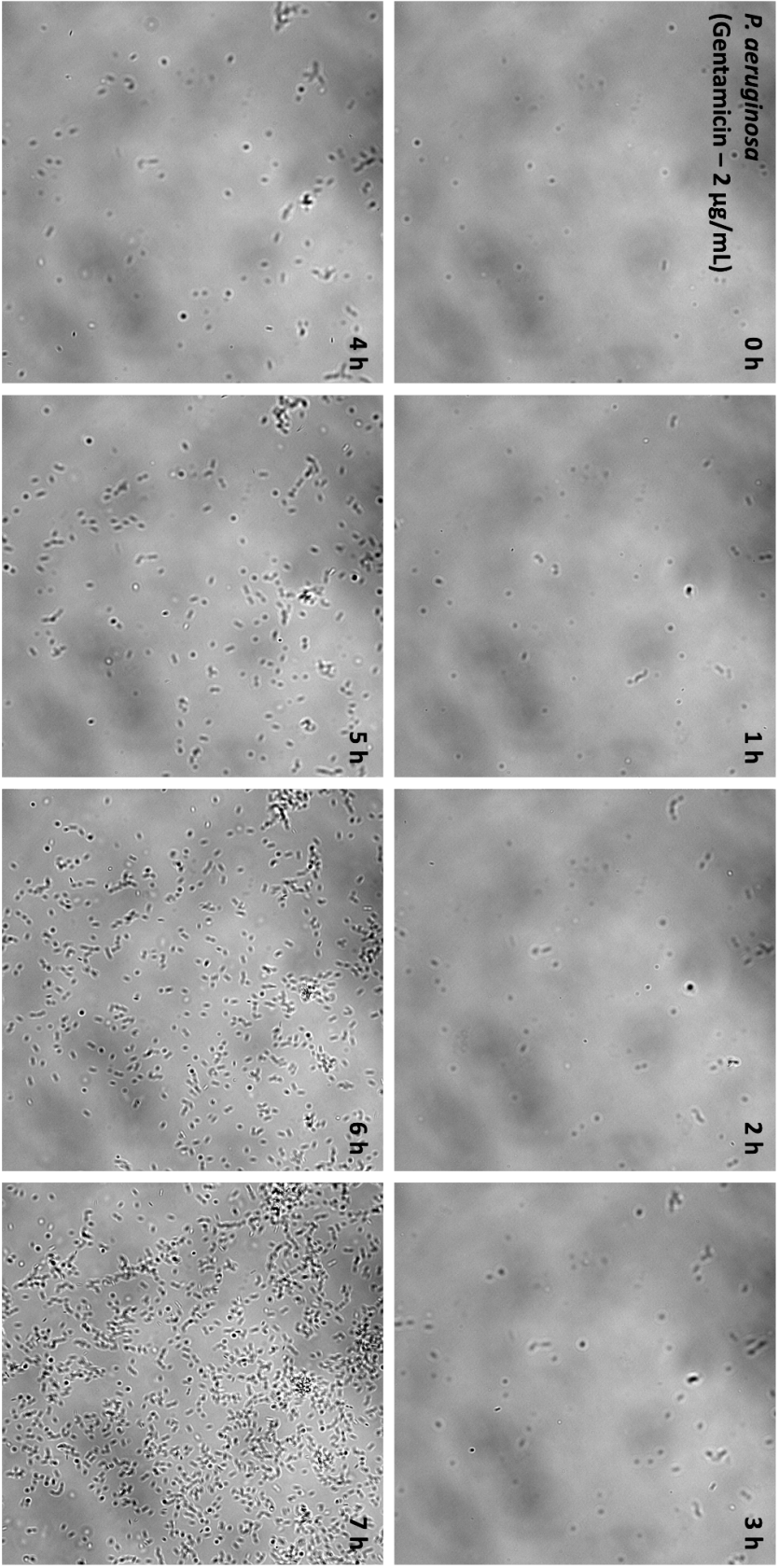
3 h

4 h

5 h

6 h

7 h



P. aeruginosa
(Gentamicin – 5 µg/mL)

0 h

1 h

2 h

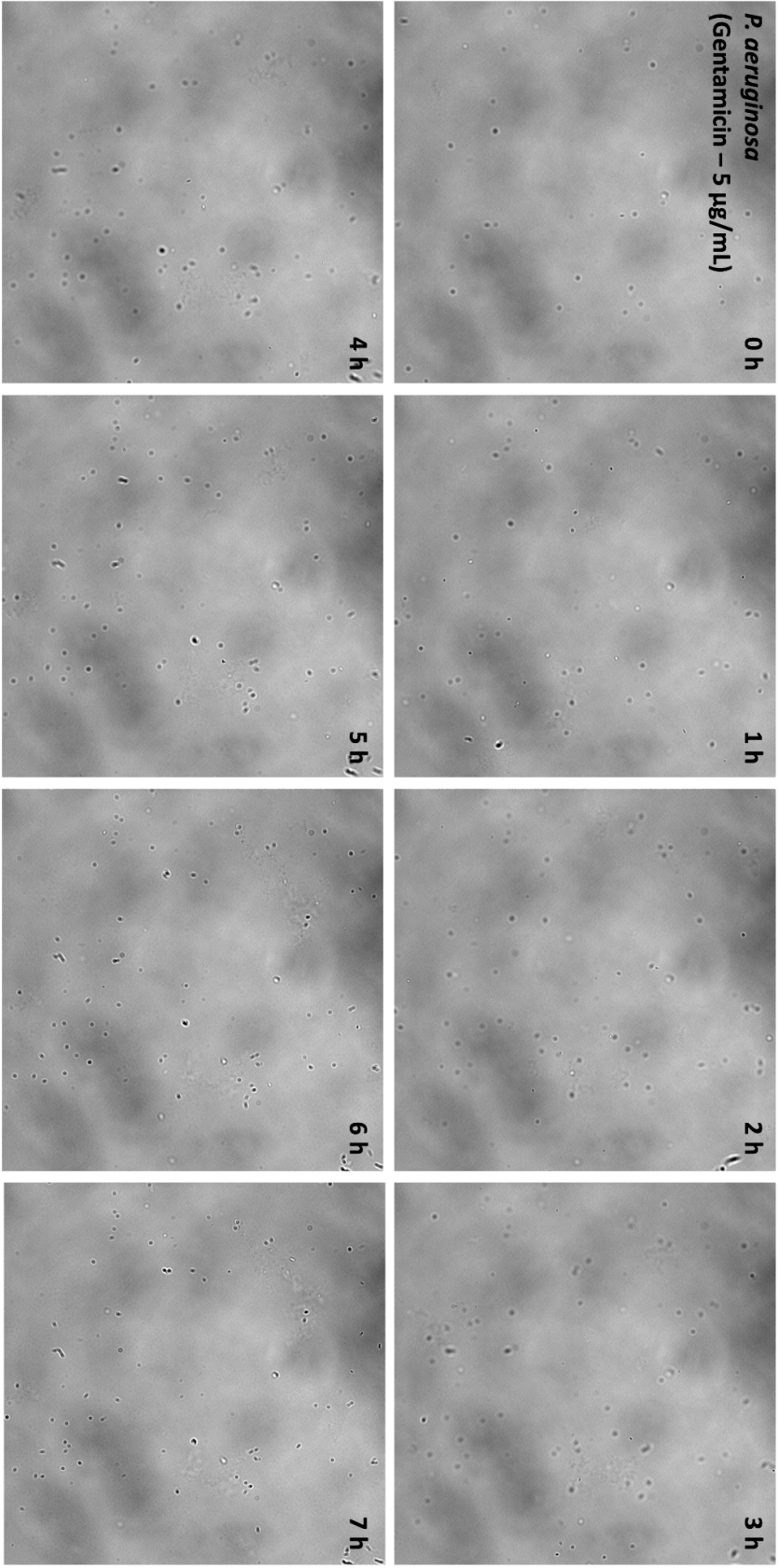
3 h

4 h

5 h

6 h

7 h



P. aeruginosa
(Colistin – 0.25 µg/mL)

0 h

1 h

2 h

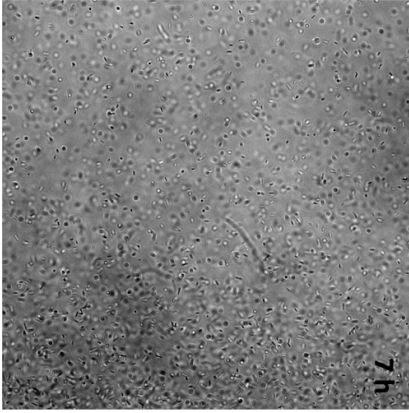
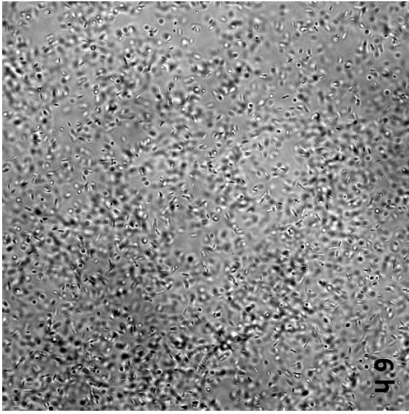
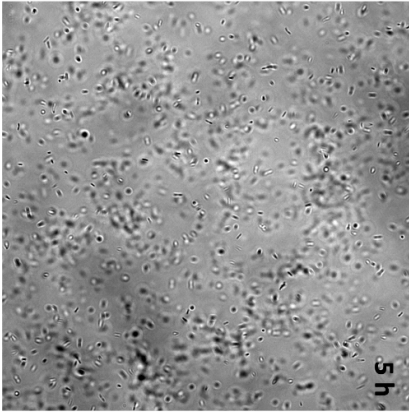
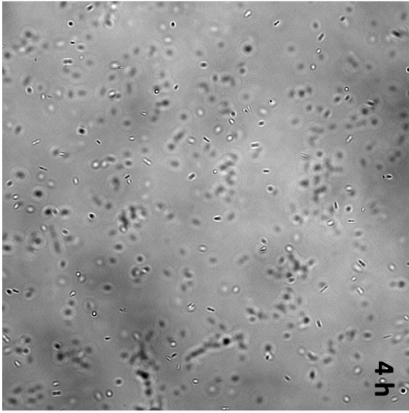
3 h

4 h

5 h

6 h

7 h



P. aeruginosa
(Colistin - 1 µg/mL)

0 h

1 h

2 h

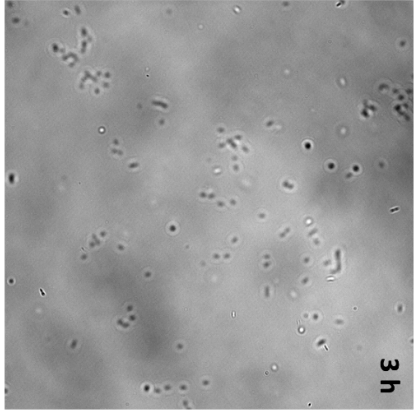
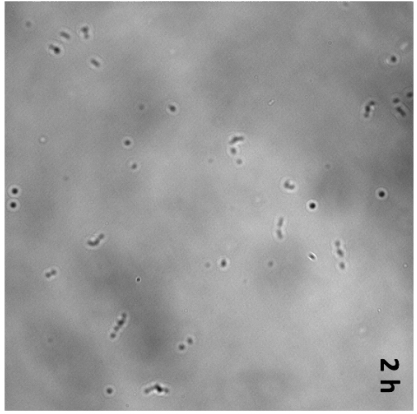
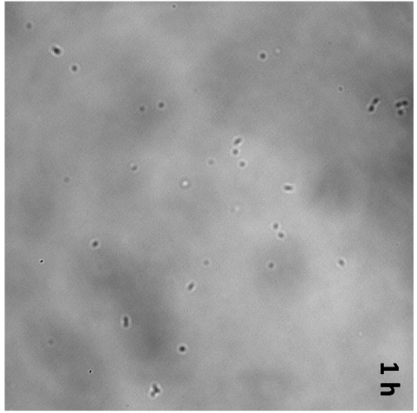
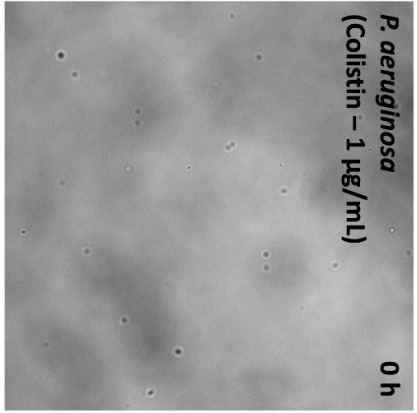
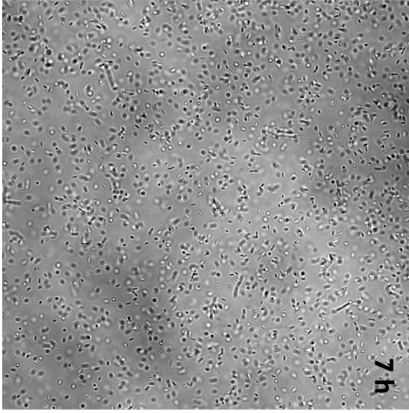
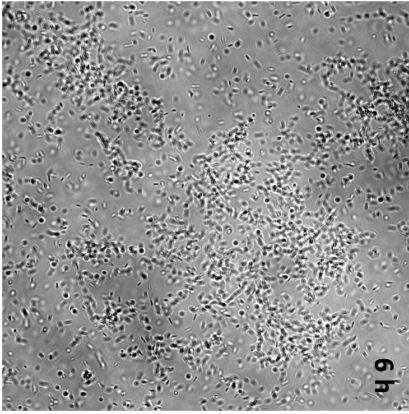
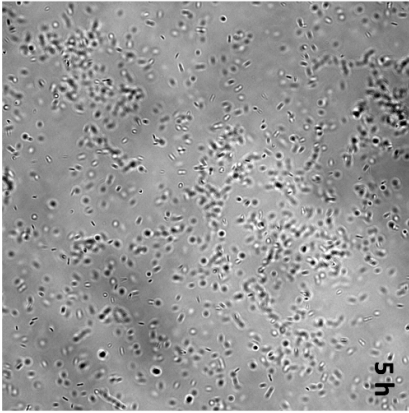
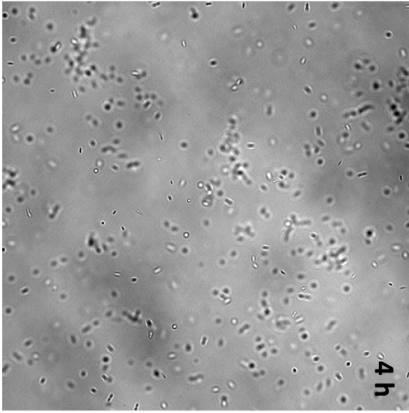
3 h

4 h

5 h

6 h

7 h



P. aeruginosa
(Colistin – 5 µg/mL)

0 h

1 h

2 h

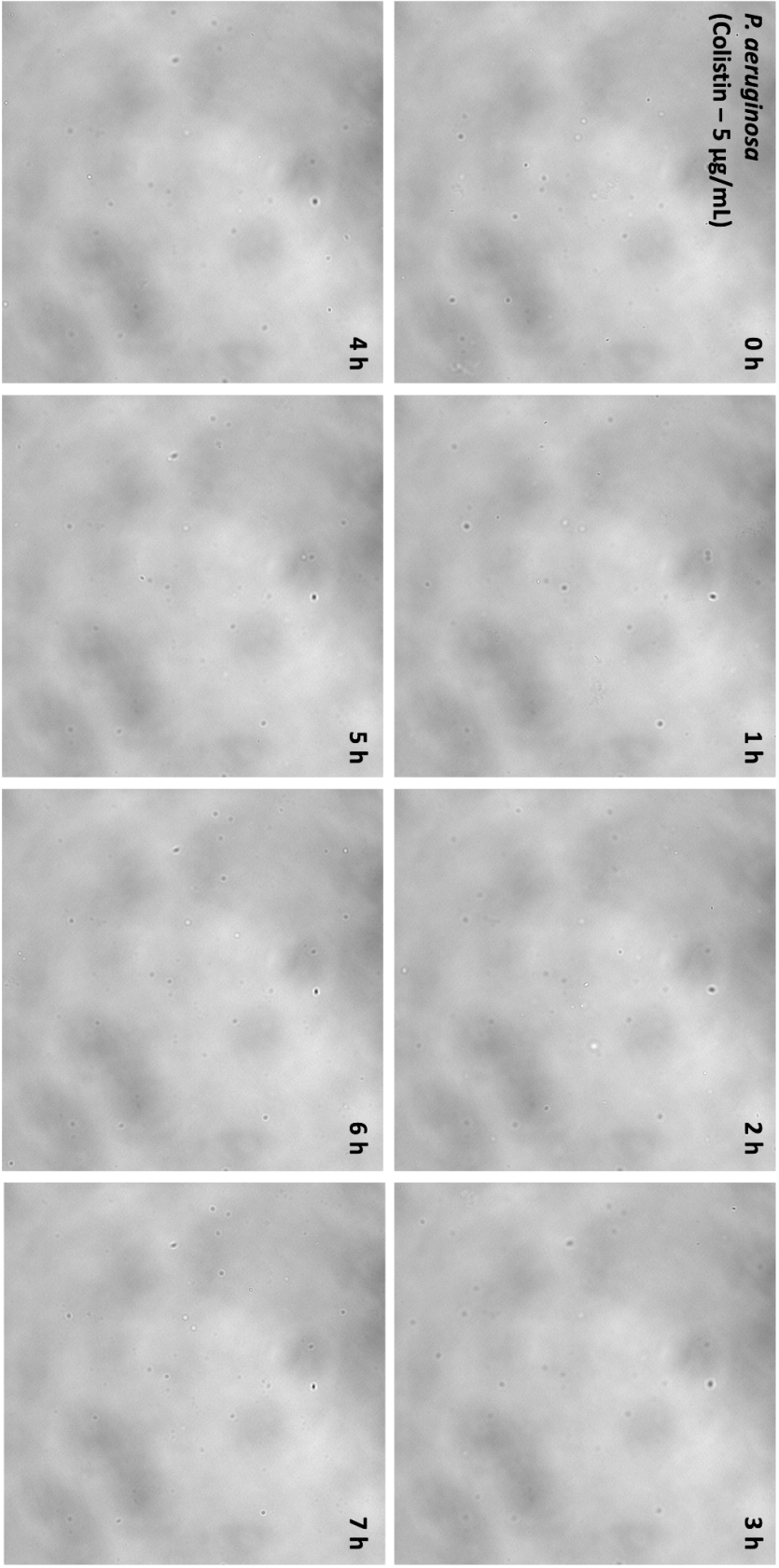
3 h

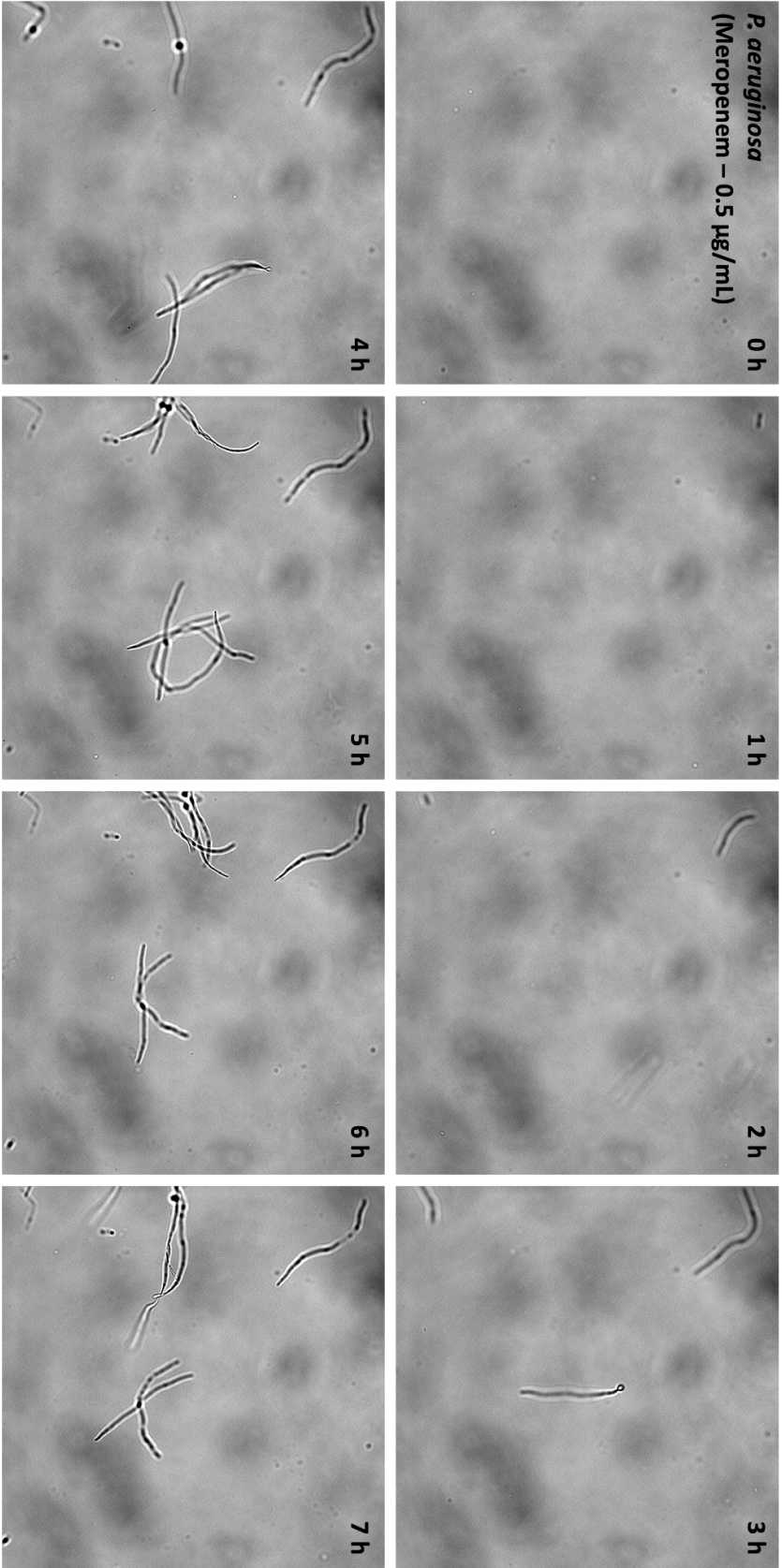
4 h

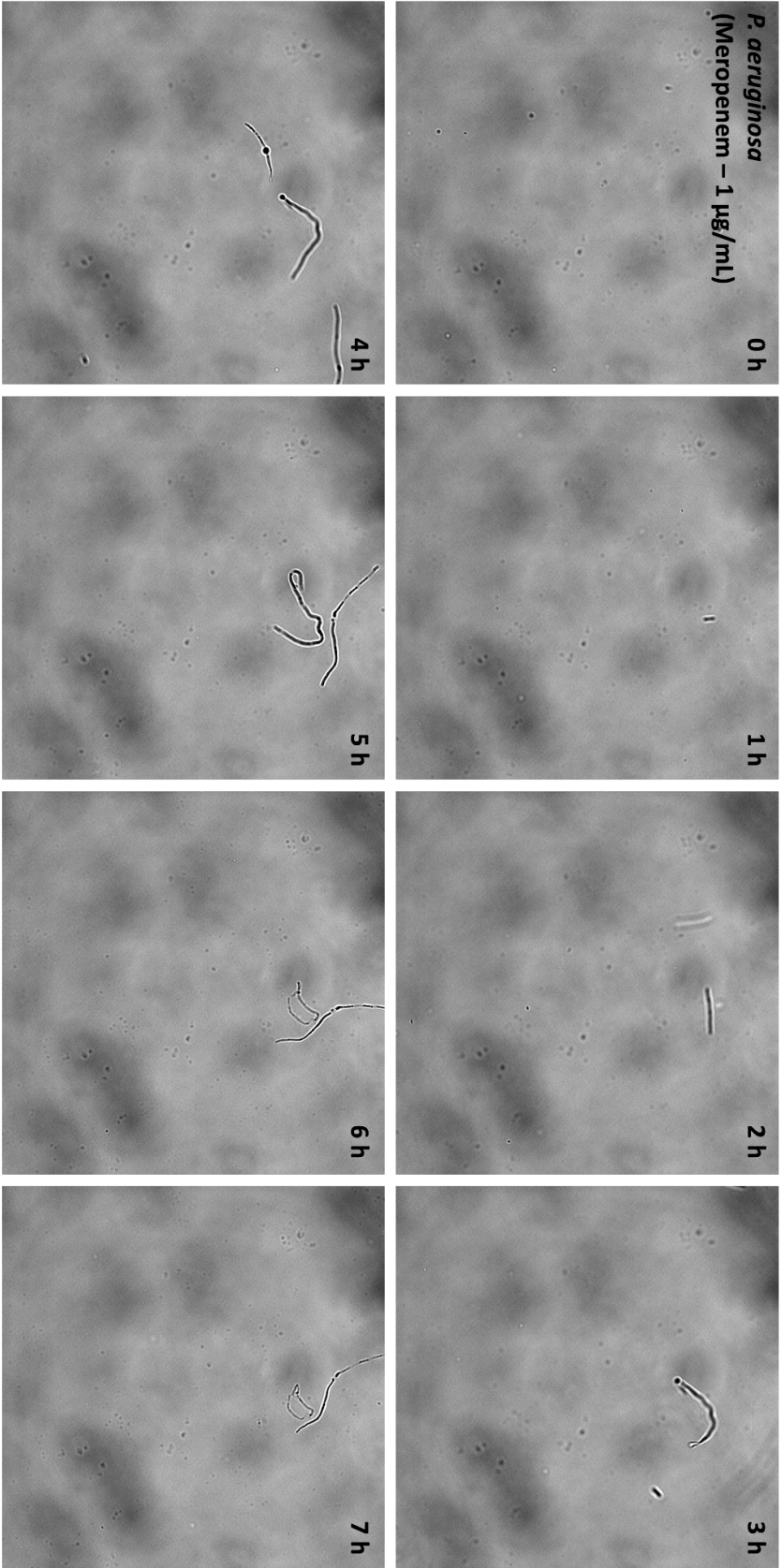
5 h

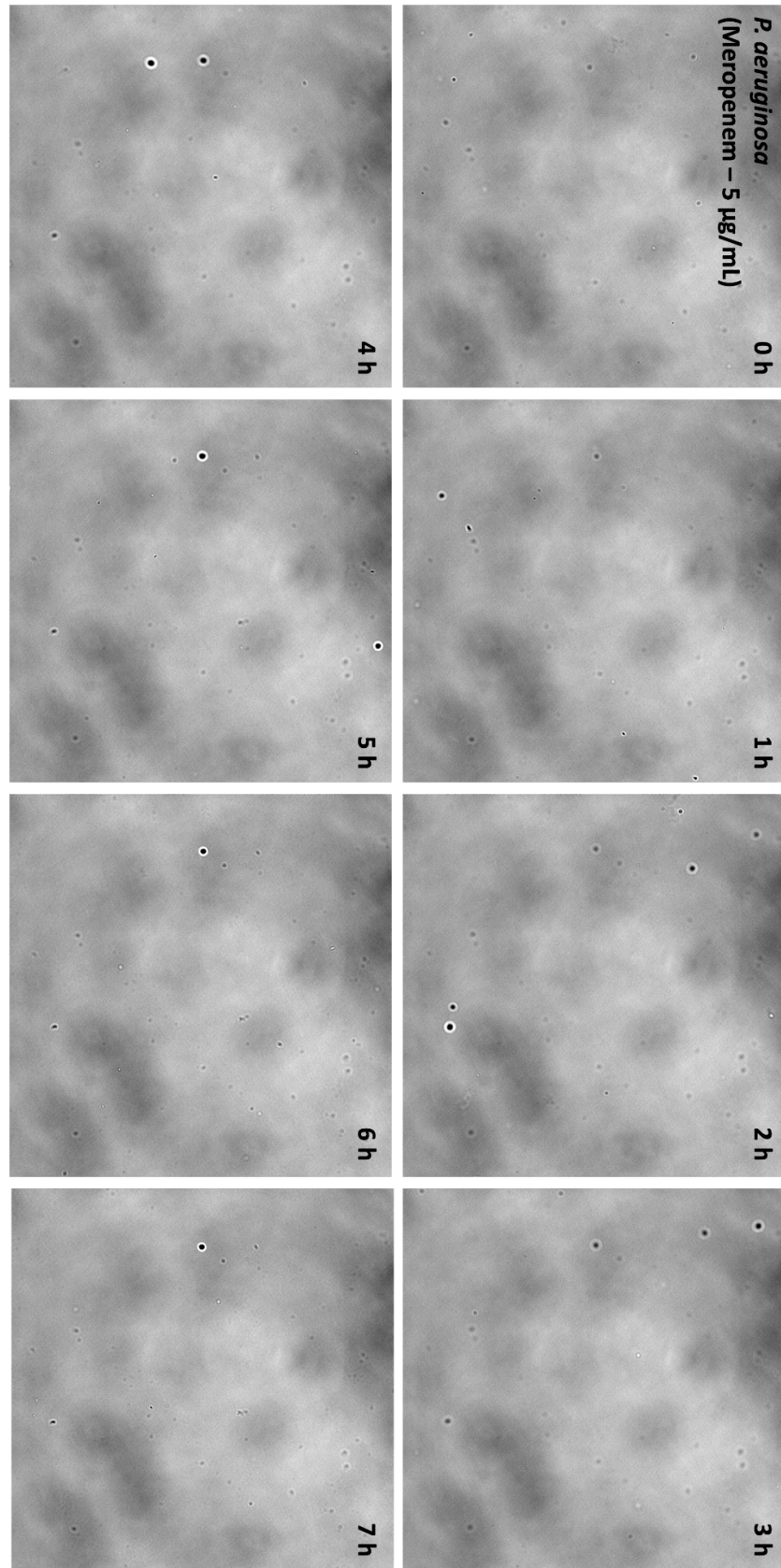
6 h

7 h

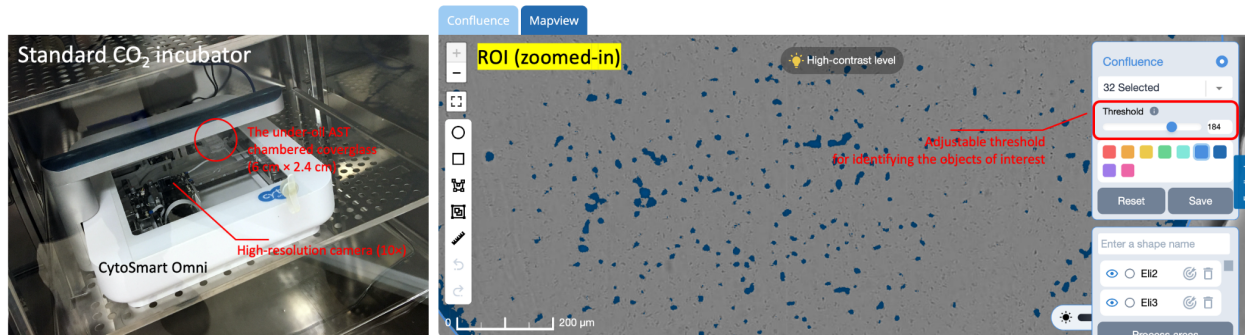








Supplementary Fig. 2 Bright-field image (60× magnification) sequence from the time lapse in Fig. 2.



Supplementary Fig. 3 The CytoSmart Omni system in a standard CO₂ incubator and the graphic user interface (GUI) for image thresholding and object identification in the confluency analysis.

Supplementary Movie 1 Time lapse (12 h, 60× magnification)_*P. aeruginosa* (PA 01)_Control no drug (3600× accelerated)

Supplementary Movie 2 Time lapse (12 h, 60× magnification)_*P. aeruginosa* (PA 01)_Ciprofloxacin 0.125 μg/mL (3600× accelerated)

Supplementary Movie 3 Time lapse (12 h, 60× magnification)_*P. aeruginosa* (PA 01)_Getamicin 1 μg/mL (3600× accelerated)

Supplementary Movie 4 Time lapse (12 h, 60× magnification)_*P. aeruginosa* (PA 01)_Colistin 0.25 μg/mL (3600× accelerated)

Supplementary Movie 5 Time lapse (12 h, 60× magnification)_*P. aeruginosa* (PA 01)_Meropenem 0.5 μg/mL (3600× accelerated)