

Supplement 6

Kaplan-Meier Method

Table of Contents

- 6.1 Introduction to the Kaplan-Meier Method Used
- 6.2 Outcomes Affecting >5% of Patients for Time-to-recovery and Hazard Ratio ($P < 0.050$)
- 6.3 Full Table for Kaplan-Meier Estimates in Patients with a WURSS-44 Q1 Score of 4-7 at Baseline
- 6.4 Kaplan-Meier Curves of Primary Outcome
- 6.5 Kaplan-Meier Curves for Secondary Symptoms with Duration 0-5 days and 6-10 days at Screening ($P \leq 0.050$)

Supplement 6.1

Introduction to the Kaplan-Meier Method Used

The Kaplan-Meier (KM) Method is utilized to estimate the time-to-recovery (days) applied to the 43 items/symptoms listed in WURSS-44 for primary and secondary efficacy outcomes. “Recovery” is defined as having 3 consecutive days of no symptom, or a score of ‘0’ on the WURSS-44 scale. The first day of the 3-day recovery is used to compute days-to-recovery.

The time-to-recovery values in the primary endpoint were assessed with the KM method, and the difference between the Treatment and Control groups were assessed with the log-rank test, stratified by symptom duration days. In calculating the time-to-recovery for the secondary symptoms, the KM Method and log-rank tests were applied in the same way as for the primary outcome.

‘Day 1’ is the Baseline, defined as the day of first-use of the treatment device. Knowing that there is a roughly 2 days delay in receiving treatment. Symptom duration days can be interpreted as having added a median of 2 days to the 0-5 days strata duration, the equivalent of 0-7 days. Similarly, the 6-10 day symptom duration stratum is equivalent to 8-12 days at baseline.

Patients who did not achieve recovery at the end of the 30-day assessment period were censored. This also included patients whose 3-day results were incomplete.

In this Supplement section, we include a table of significant outcomes for WURSS-44 secondary endpoints (Supplement 6.2, also presented as Table 3), the full table for all the WURSS-44 items (Supplement 6.3) as well as the KM curves for the Primary (Supplement 6.4) and Secondary outcomes (Supplement 6.5) with significance ($P \leq 0.05$).

Supplement 6.2

Outcomes Affecting >5% of Patients for Time-to-recovery and Hazard Ratio (P<0.050)

Symptom	Days with Symptoms at Screening	Kaplan-Meier							Cox Proportional Hazards		
		Treatment	N		Median Days to Recovery	95% CI	KM Log-rank P-value	Hazard Ratio	95% CI	Cox P-value	
			Total	Recovered	Censored						
Patients with 0-10 Days Symptom Duration (all at Baseline)											
Sinus pain	0 to 10	Treatment	39	35	4	10	(8, 13)	0.005	2.001	(1.203, 3.328)	0.008
		Control	42	30	12	17	(9, 25)				
		Total	81	65	16	7					
Chest congestion	0 to 10	Treatment	43	38	5	15	(9, 18)	0.017	1.878	(1.105, 3.193)	0.02
		Control	35	22	13	21	(17, 30)				
		Total	78	60	18	6					
Body aches	0 to 10	Treatment	60	52	8	12	(9,15)	0.019	1.652	(1.084, 2.519)	0.02
		Control	59	39	20	15	(12, 20)				
		Total	119	119	28	3					
Think clearly	0 to 10	Treatment	44	34	10	11	(9, 15)	0.020	1.893	(1.013, 3.248)	0.021
		Control	41	23	18	21	(12, 30)				
		Total	85	57	28	10					
Ear discomfort	0 to 10	Treatment	24	21	3	12.5	(8, 17)	0.023	2.325	(1.104, 4.893)	0.026
		Control	21	11	10	24.0	(12, 36)				
		Total	45	32	13	13.5					
Sinus drainage	0 to 10	Treatment	28	22	6	12	(10, 17)	0.026	2.14	(1.088, 4.203)	0.028
		Control	27	15	12	23	(10, 36)				
		Total	55	37	18	11					
Headache	0 to 10	Treatment	67	53	14	14	(11, 20)	0.031	1.586	(1.036, 2.429)	0.034
		Control	61	36	25	21	(14, 28)				
		Total	128	89	39	7					
Coughing up stuff	0 to 10	Treatment	27	25	2	13	(10, 20)	0.037	1.817	(1.013, 3.261)	0.045
		Control	32	21	11	21	(14, 27)				
		Total	59	46	13	8					
Sneezing	0 to 10	Treatment	33	29	4	13	(9, 18)	0.049	1.92	(1.064, 3.467)	0.030
		Control	22	14	8	17	(10, 24)				
		Total	55	43	12	4					
Patients with 0-5 Days Symptom Duration											
Headache	0 to 5	Treatment	50	43	7	13	(10, 16)	0.006	2.027	(1.216, 3.378)	0.007
		Control	40	23	17	19	(14, 24)				
		Total	90	66	24	6					
Sinus pain	0 to 5	Treatment	28	24	4	9	(7, 13)	0.022	1.926	(1.074, 3.452)	0.028
		Control	32	22	10	15	(9, 25)				
		Total	60	46	14	6					
Think clearly	0 to 5	Treatment	29	22	7	10	(9, 15)	0.024	2.067	(1.093, 3.909)	0.025
		Control	30	17	13	21	(12, 30)				
		Total	59	39	20	11					
Swollen glands	0 to 5	Treatment	20	19	1	8	(6, 10)	0.029	2.436	(1.046, 5.676)	0.039
		Control	13	9	4	10	(7, 13)				
		Total	33	28	5	2					
Chest congestion	0 to 5	Treatment	32	28	4	15	(9, 20)	0.042	1.847	(1.008, 3.384)	0.047
		Control	27	17	10	21	(10, 32)				
		Total	59	45	14	6					
Body aches	0 to 5	Treatment	46	39	7	12	(9, 17)	0.050	1.641	(0.996, 2.704)	0.052
		Control	39	26	13	15	(12, 23)				
		Total	85	65	20	3					
Patients with 6-10 Days Symptom Duration											
Feeling tired	6 to 10	Treatment	25	9	16	25.5	(24, 27)	0.037	0.432	(0.192, 0.972)	0.094
		Control	29	17	12	20	(13, 27)				
		Total	54	26	28	4.5					

Lack of energy	6 to 10	Treatment	25	10	15	26.5	(27, 26)	0.049	0.47	(0.220, 0.996)	0.049
		Control	27	16	11	20	(15, 25)				
		Total	52	26	26	<u>3.5</u>					

Supplement 6.3

**Full Table for Kaplan-Meier Estimates
in Patients with a WURSS-44 Q1 Score of 4-7 at Baseline**

WURSS Questionnaire Item	Symptom Days	Treatment	N			Median		P-value^
			Total	Recovered	Censored	Days	95% CI	
01: How sick do you feel today?	0-5d	Treatment	68	53	15	18	(13, 20)	0.050
		Control	68	42	26	21	(15, 28)	
		Total	136	95	41			
	6-10d	Treatment	32	19	13	23	(19, 27)^	0.507
		Control	31	19	12	21	(15, 27)^	
		Total	63	38	25			
	0-10d	Treatment	100	72	28	19	(16, 22)	0.197
		Control	99	61	38	21	(19, 25)	
		Total	199	133	66			
02: Cough	0-5d	Treatment	44	33	11	21	(16, 27)	0.572
		Control	38	25	13	23	(18, 28)	
		Total	82	58	24			
	6-10d	Treatment	18	11	7	25	(21, 29)^	0.429
		Control	18	12	6	18	(12, 24)^	
		Total	36	23	13			
	0-10d	Treatment	62	44	18	23	(20, 27)	0.953
		Control	56	37	19	22	(17, 27)	
		Total	118	81	37			
03: Coughing stuff up	0-5d	Treatment	17	15	2	13	(11, 28)	0.100
		Control	23	14	9	21	(13, 29)^	
		Total	40	29	11			
	6-10d	Treatment	10	10	0	11	(6, 20)	0.197
		Control	9	7	2	17	(8, 26)^	
		Total	19	17	2			
	0-10d	Treatment	27	25	2	13	(10, 20)	0.037*
		Control	32	21	11	21	(14, 27)	
		Total	59	46	13			

* $p < 0.05$ by log-rank test for symptom days 0-5 and 6-10, and symptom-day stratified log-rank test over symptom days. 95% confidence interval (CI).

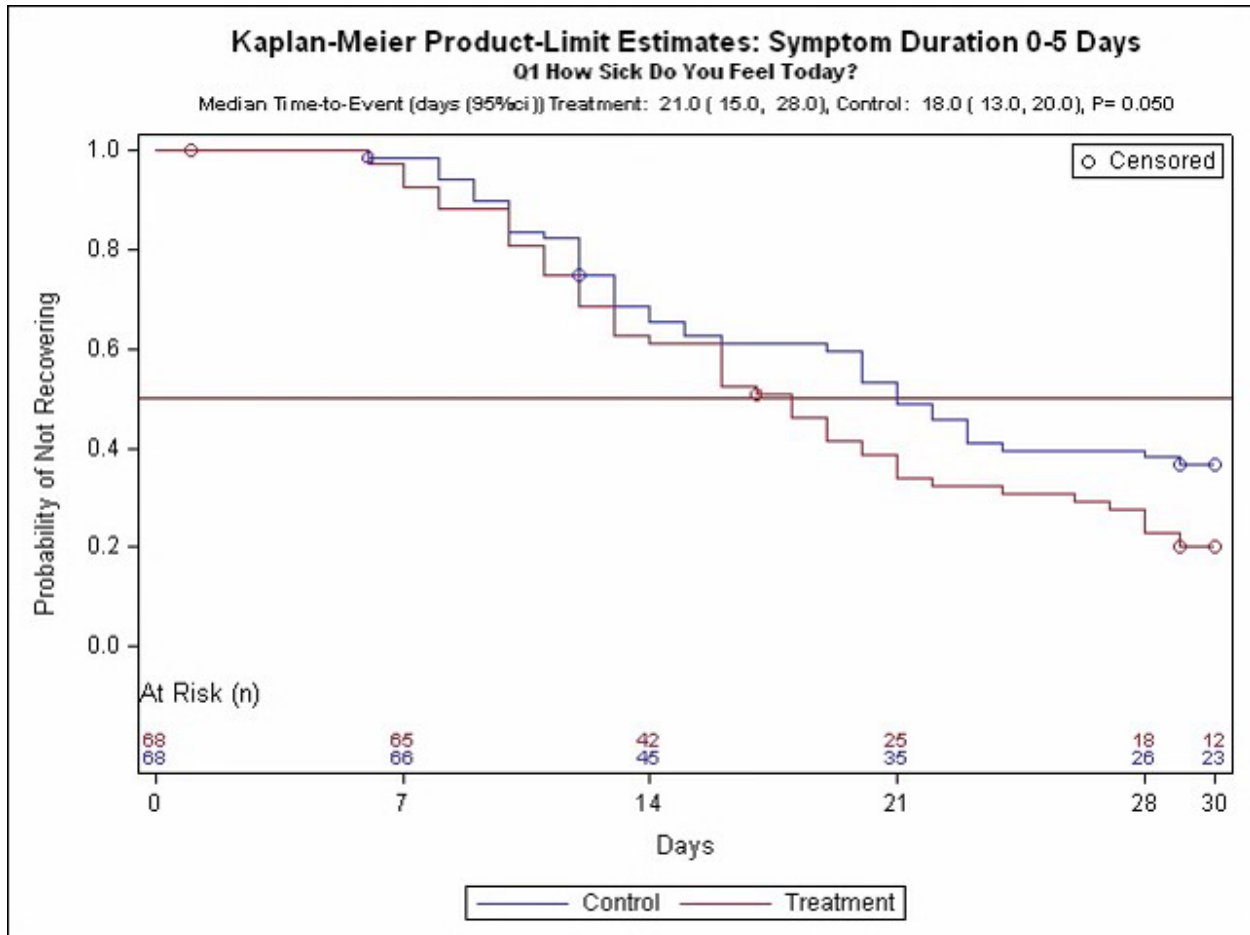
Success (recovery) criteria defined as first day of 3 consecutive days of a zero score (does not have this symptom, not at all).

Note, when median not reached, the mean (biased) is used (^). When upper confidence interval (CI) not available, $2 * \text{mean} - \text{CI}_{\text{lower}}$ (^) is used.

17MAR22,T02_km

Supplement 6.4

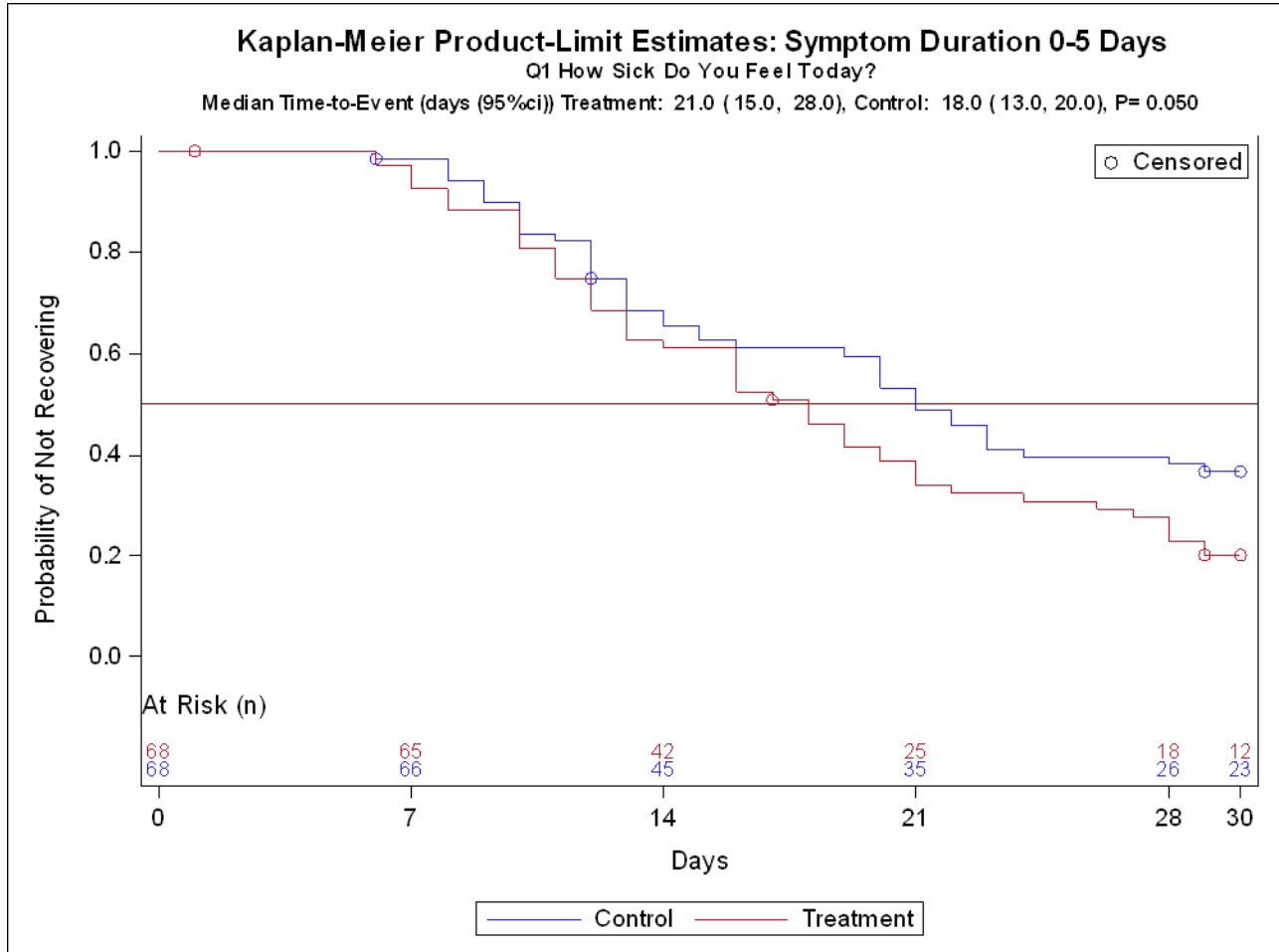
Kaplan-Meier Curve of Primary Outcome



This figure shows the “survival” probability of the primary outcomes of WURSS-44 Q1: “How sick do you feel today?” for the stratified group with symptom duration of 0-5 days at screening. “Survival” is interpreted as the endpoint not being met yet (did not recover). Subjects that did not have full recovery were censored. The difference in the median time-to-recovery (95% CI) between the two groups were estimated with the log-rank test, and its significance presented in the P-value.

Supplement 6.5

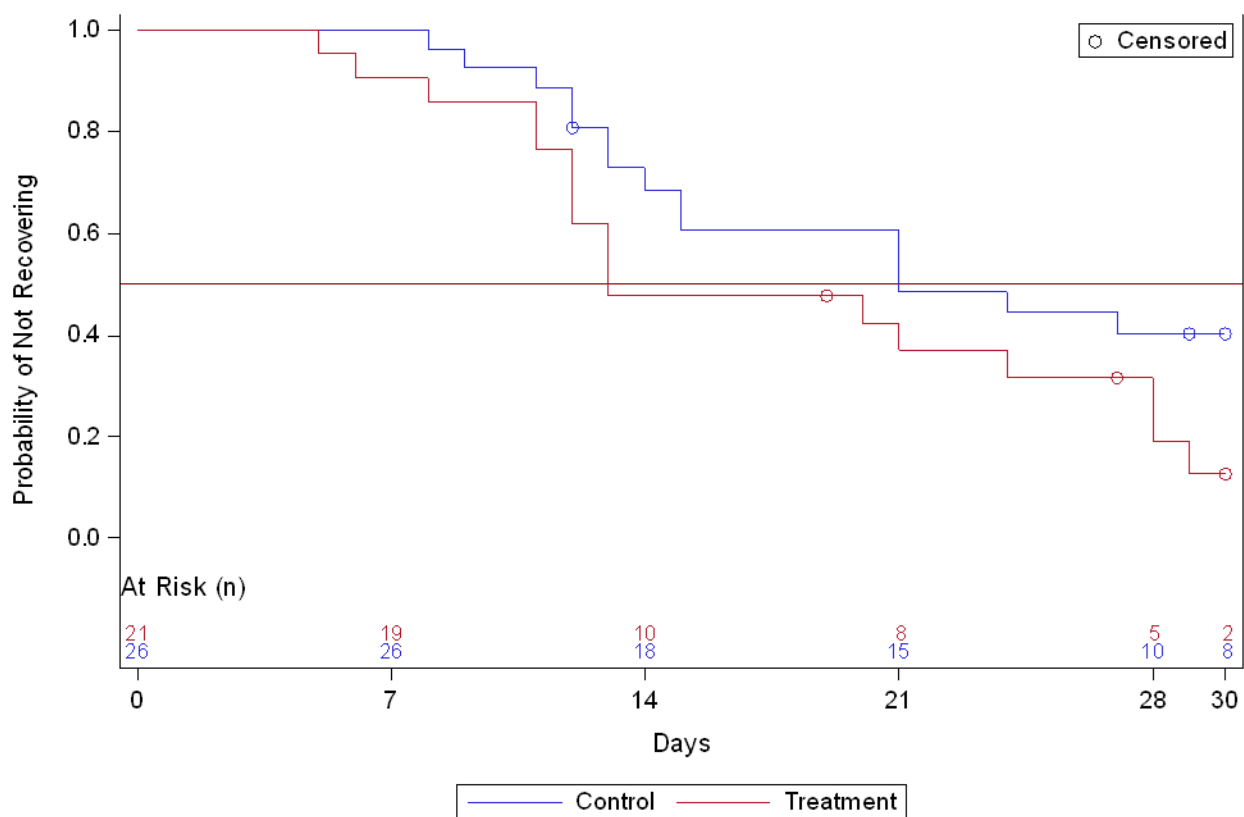
Kaplan-Meier Curves for Secondary Symptoms with Duration 0-5 days at Screening ($P \leq 0.050$)



Kaplan-Meier Product-Limit Estimates: Symptom Duration 0-5 Days

Q3 Coughing Stuff Up

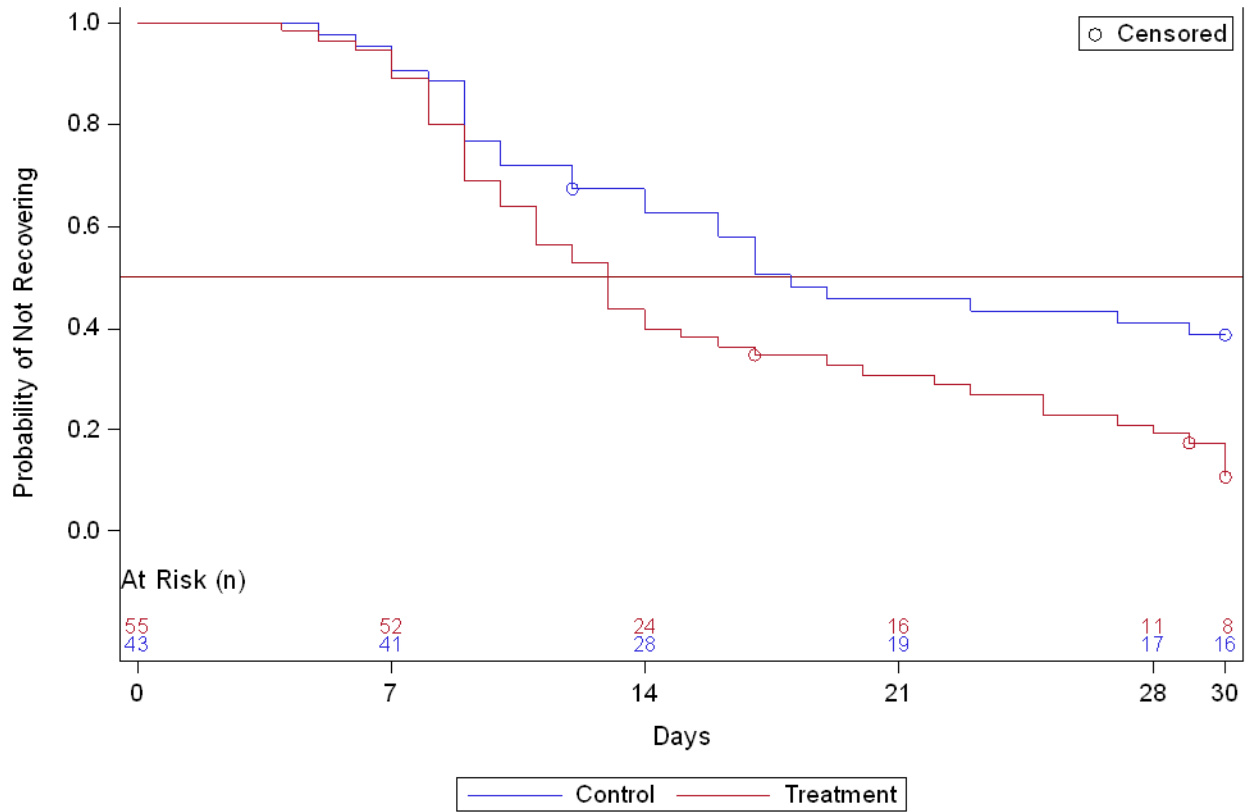
Median Time-to-Event (days (95%ci)) Treatment: 21.0 (14.0,), Control: 13.0 (12.0, 28.0), P= 0.076



Kaplan-Meier Product-Limit Estimates: Symptom Duration 0-5 Days

Q11 Headache

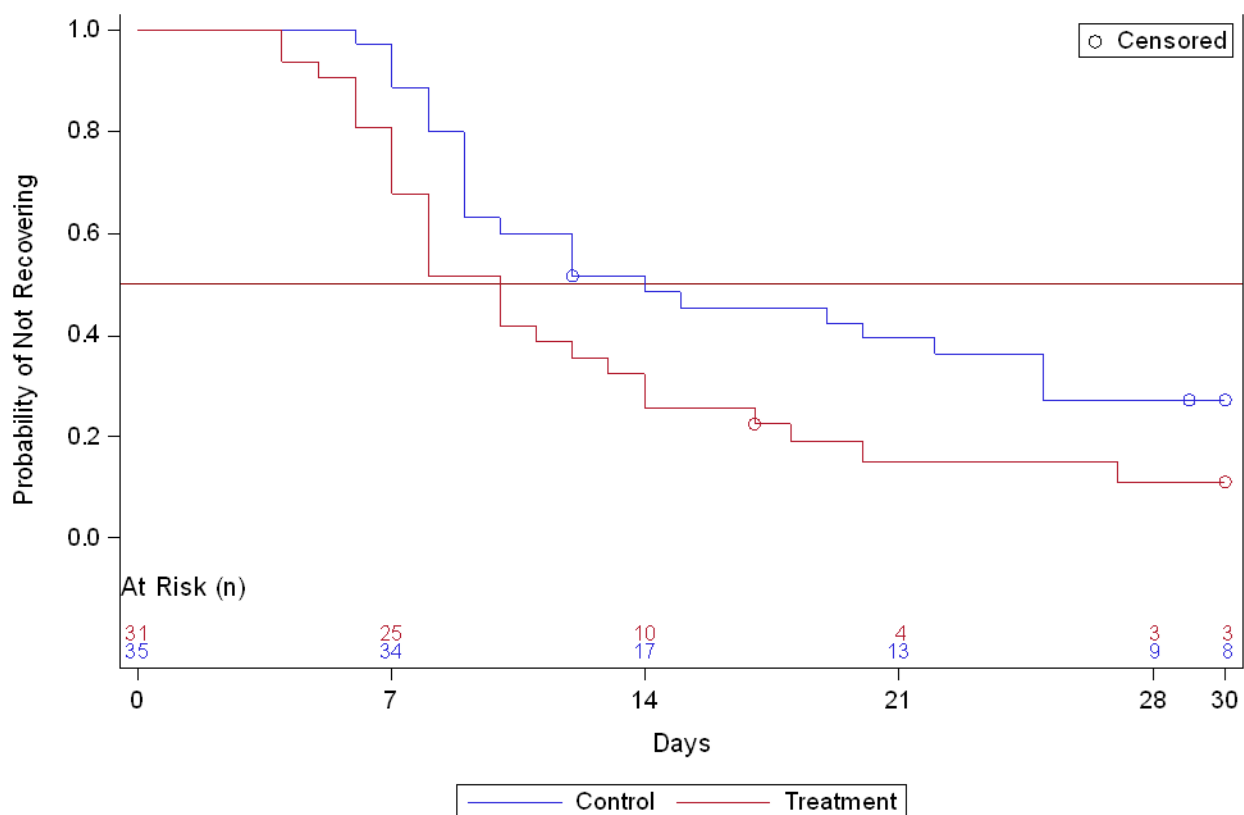
Median Time-to-Event (days (95%ci)) Treatment: 18.0 (14.0,), Control: 13.0 (10.0, 16.0), P= 0.006*



Kaplan-Meier Product-Limit Estimates: Symptom Duration 0-5 Days

Q20 Sinus Pain

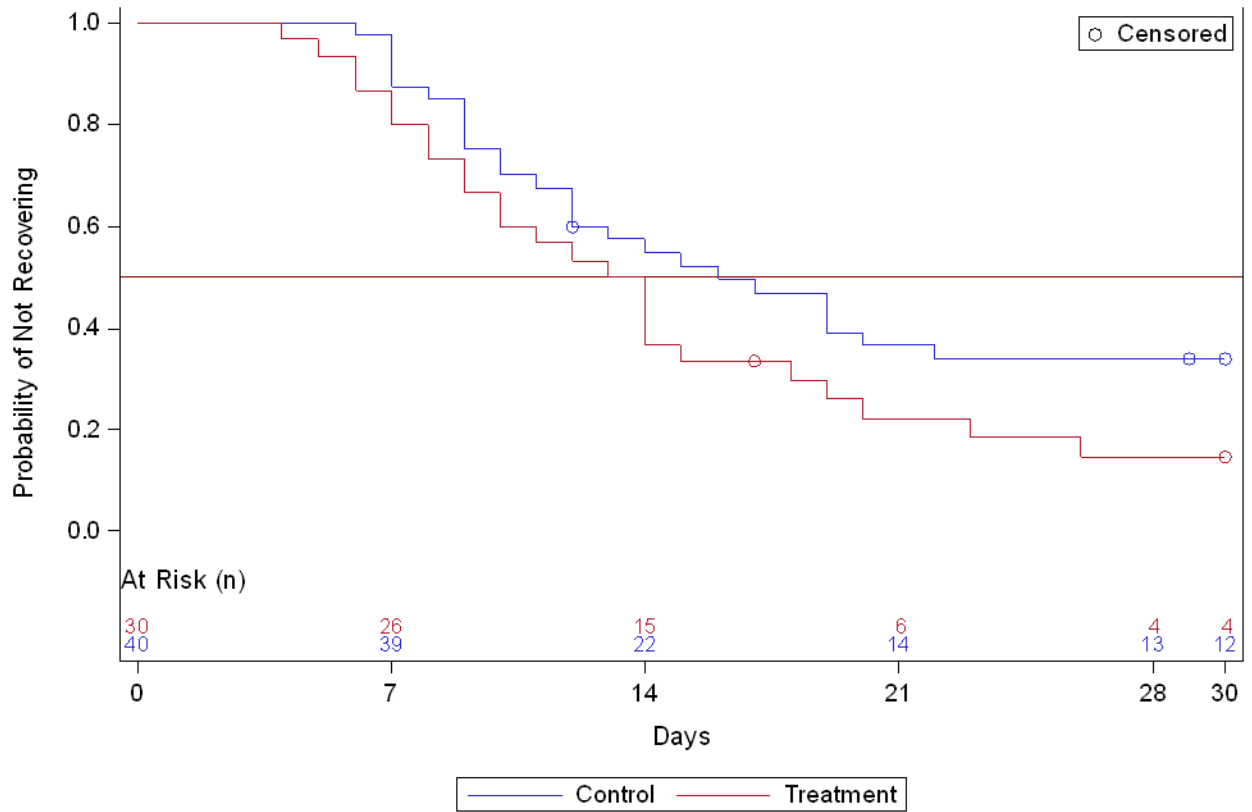
Median Time-to-Event (days (95%ci)) Treatment: 14.0 (9.0, 25.0), Control: 10.0 (7.0, 13.0), P= 0.026*



Kaplan-Meier Product-Limit Estimates: Symptom Duration 0-5 Days

Q21 Sinus Pressure

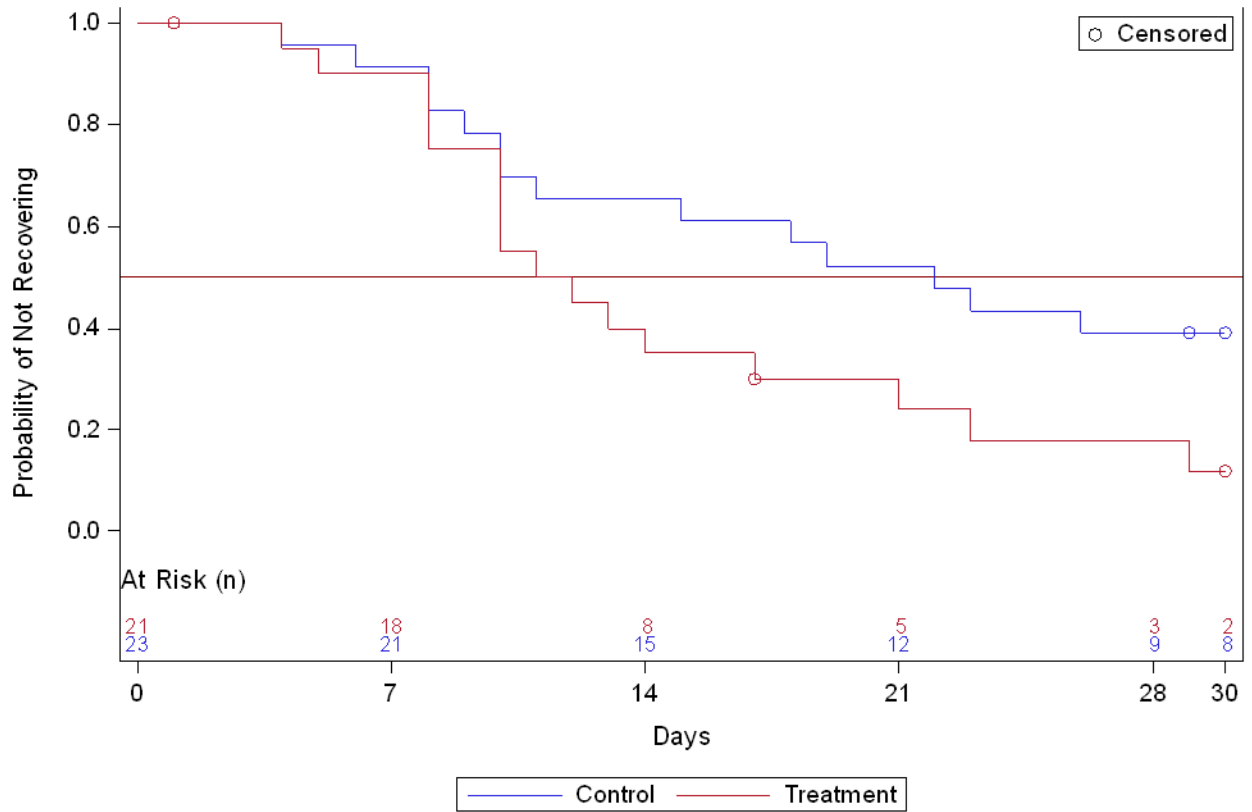
Median Time-to-Event (days (95%ci)) Treatment: 16.0 (12.0, 22.0), Control: 13.5 (9.0, 18.0), P= 0.088



Kaplan-Meier Product-Limit Estimates: Symptom Duration 0-5 Days

Q22 Sinus Drainage

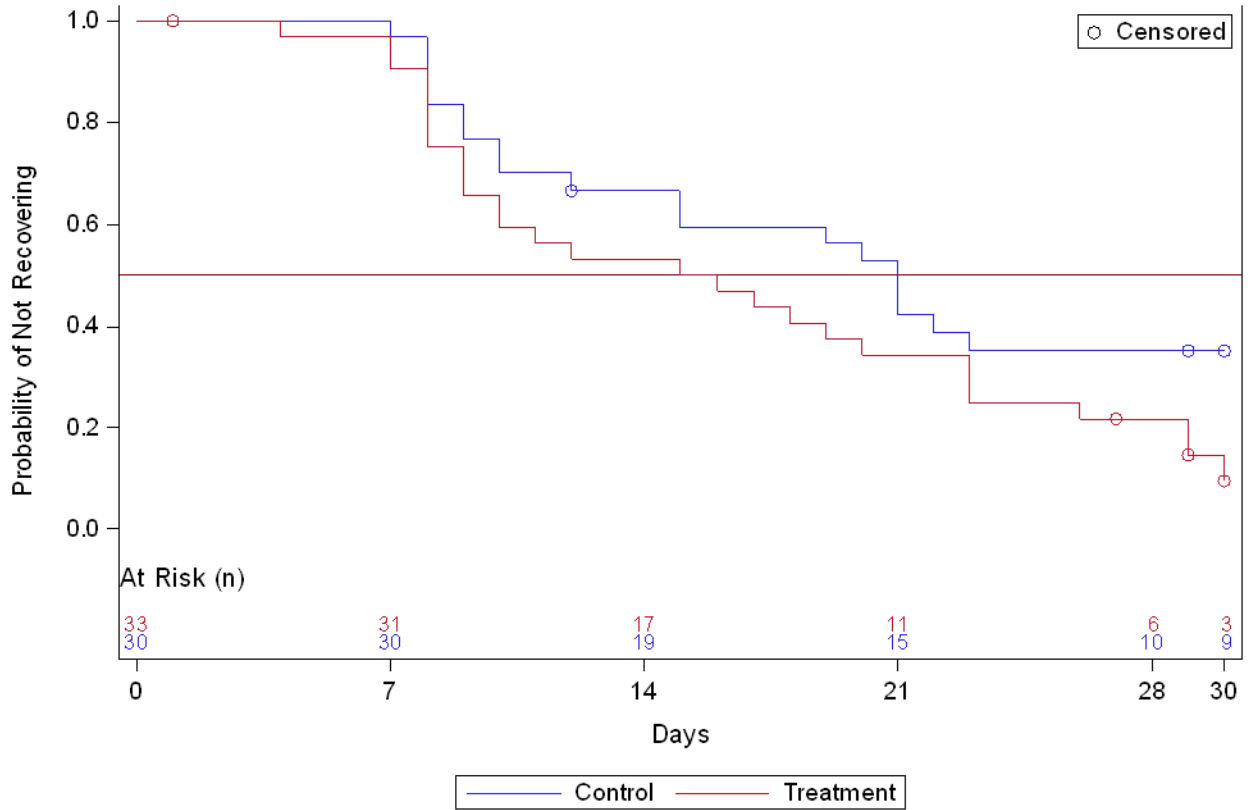
Median Time-to-Event (days (95%ci)) Treatment: 22.0 (10.0,), Control: 11.5 (8.0, 21.0), P= 0.054



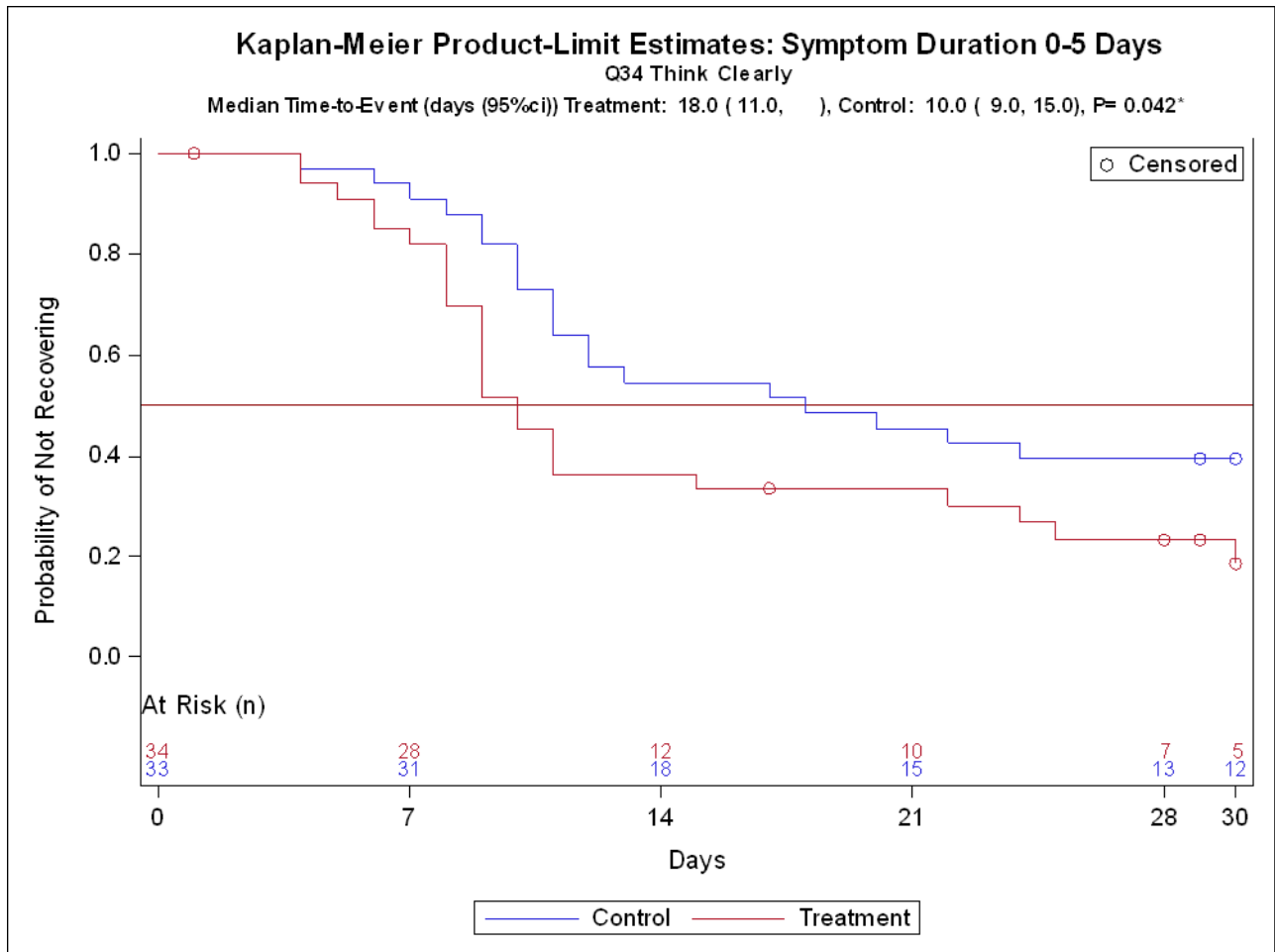
Kaplan-Meier Product-Limit Estimates: Symptom Duration 0-5 Days

Q29 Chest Congestion

Median Time-to-Event (days (95%ci)) Treatment: 21.0 (12.0,), Control: 15.5 (9.0, 23.0), P= 0.069



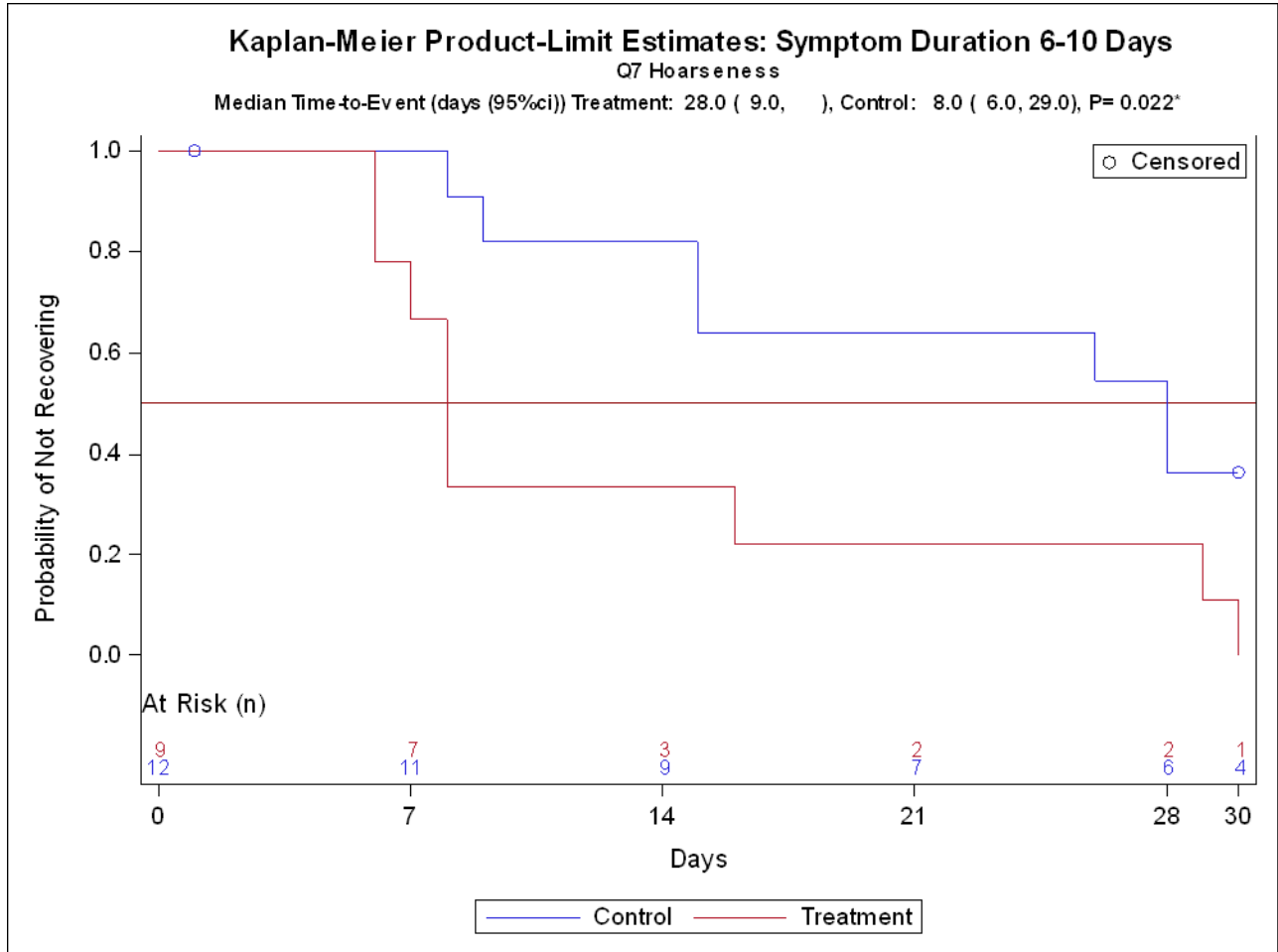
Kaplan-Meier Curves for Secondary Symptom Duration 6-10 days at Screening with $P \leq 0.05$



Supplement 6.5

Vielight RX Plus for Covid-19

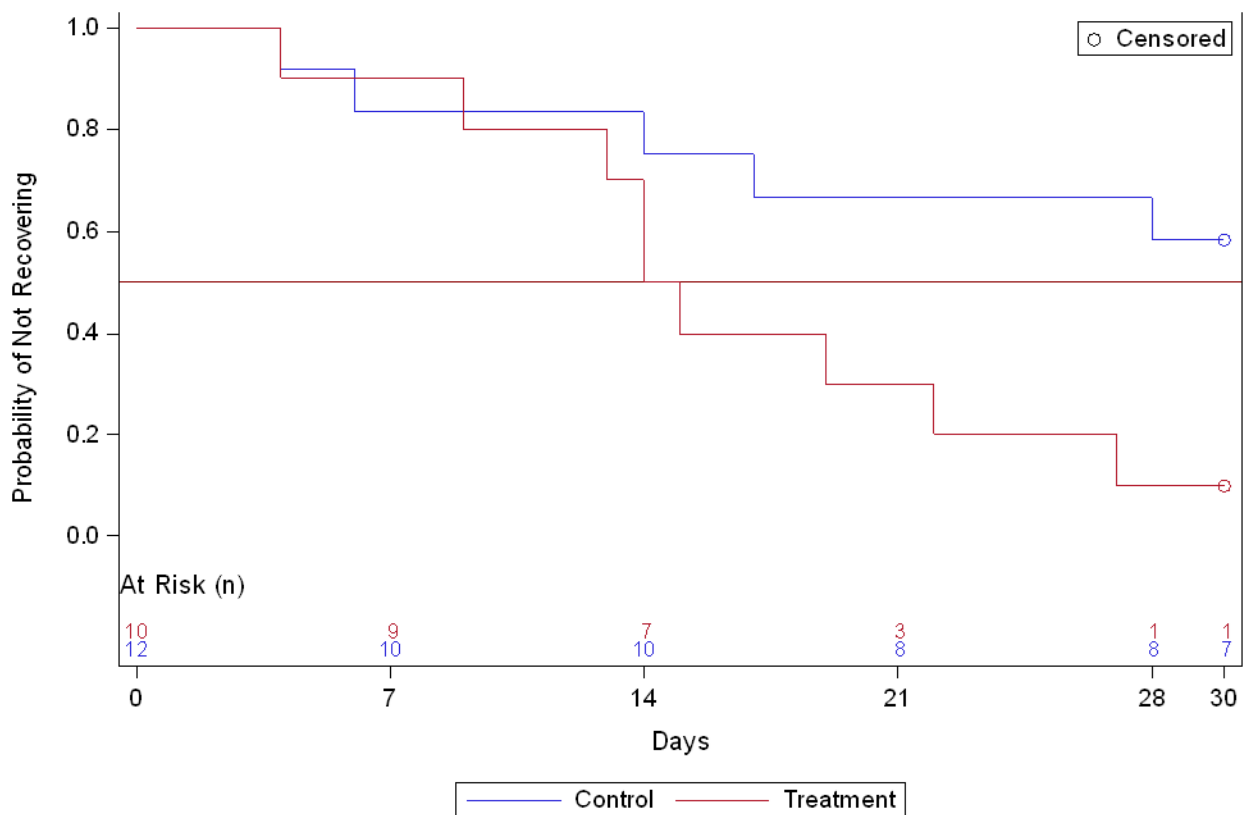
Symptom Duration 6-10 days at Screening ($P \leq 0.050$)



Kaplan-Meier Product-Limit Estimates: Symptom Duration 6-10 Days

O8 Runny Nose

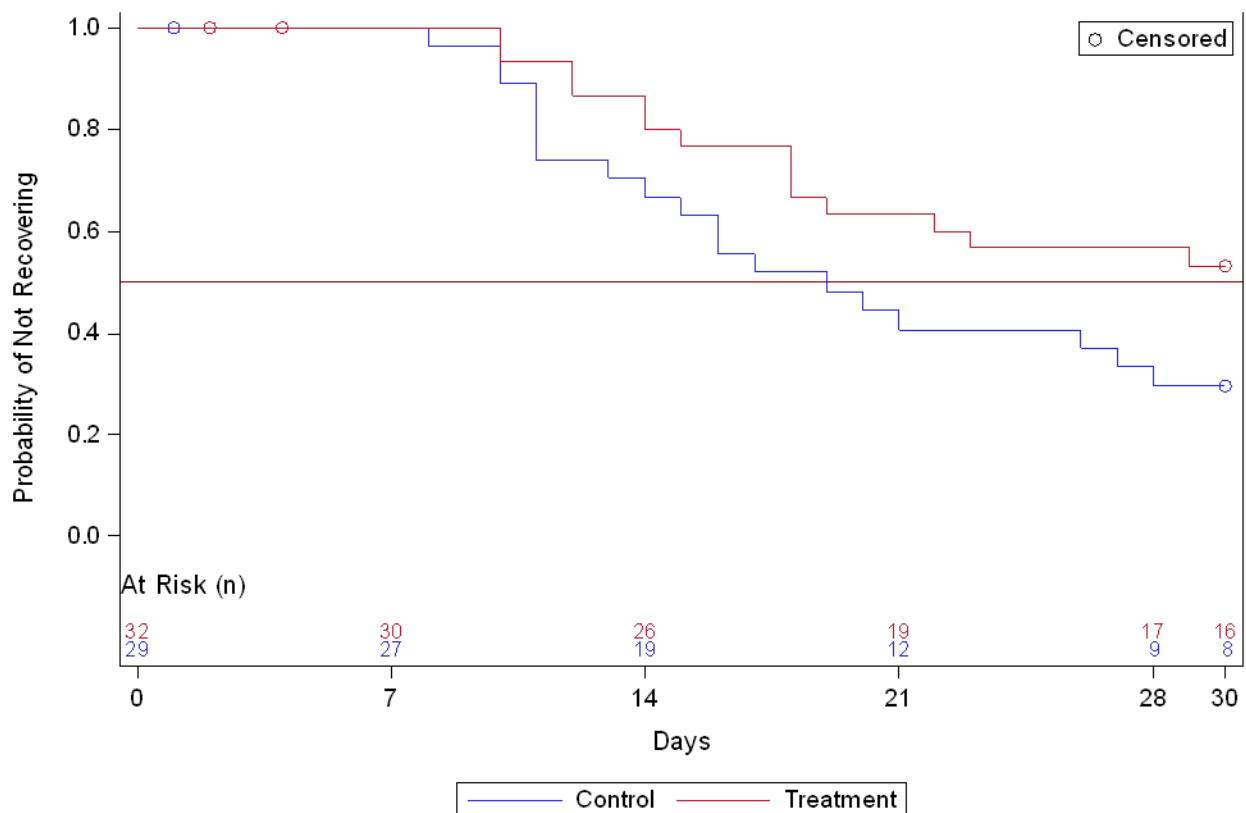
Median Time-to-Event (days (95%ci)) Treatment: (6.0,), Control: 14.5 (4.0, 22.0), P= 0.024*



Kaplan-Meier Product-Limit Estimates: Symptom Duration 6-10 Days

Q13 Feeling Run Down

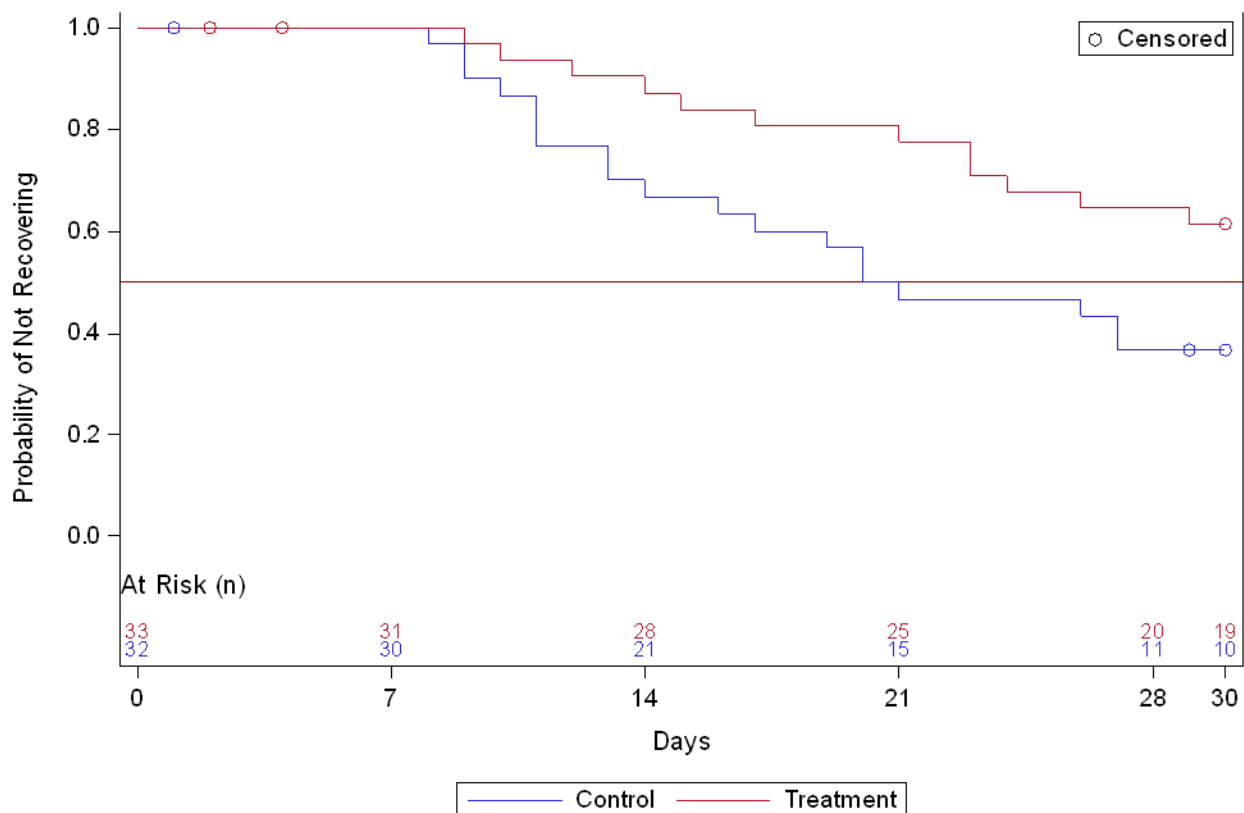
Median Time-to-Event (days (95%ci)) Treatment: 19.0 (13.0, 28.0), Control: (18.0,), P= 0.059



Kaplan-Meier Product-Limit Estimates: Symptom Duration 6-10 Days

Q18 Feeling Tired

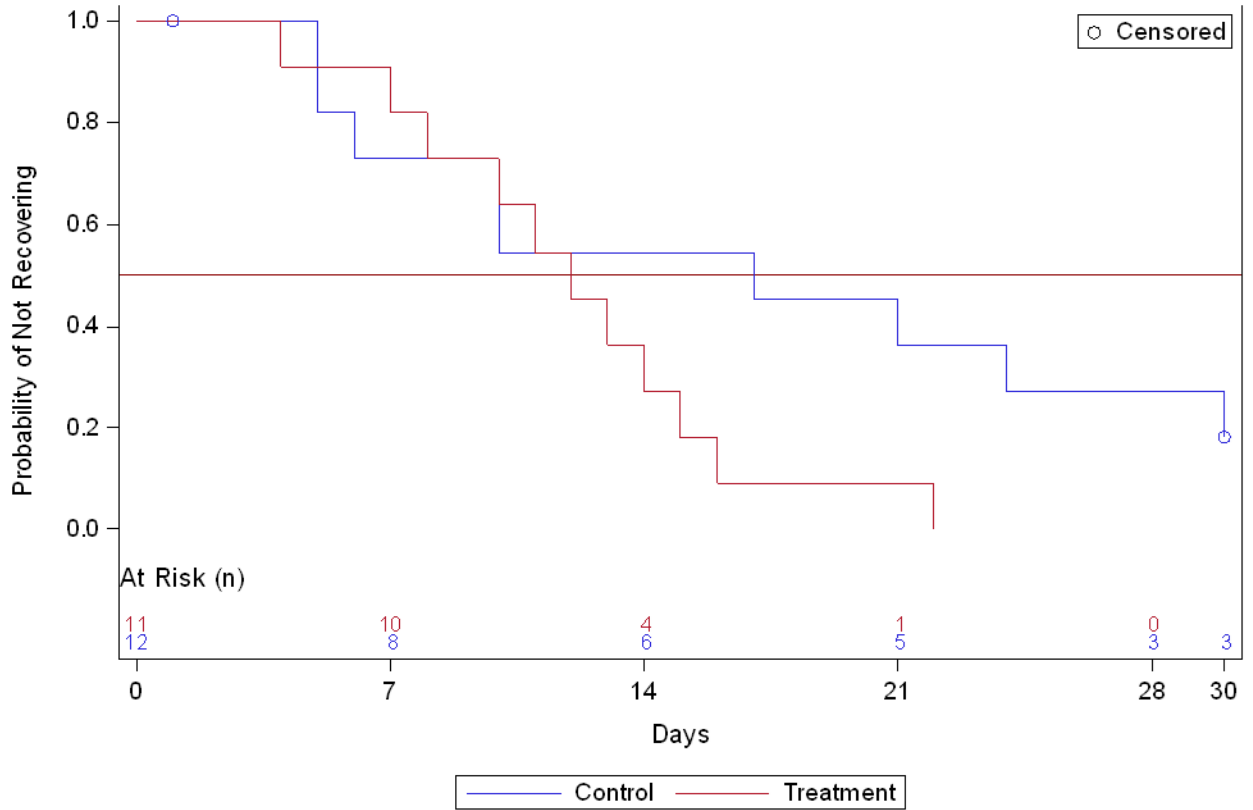
Median Time-to-Event (days (95%ci)) Treatment: 20.5 (14.0,), Control: (24.0,), P= 0.035*



Kaplan-Meier Product-Limit Estimates: Symptom Duration 6-10 Days

Q20 Sinus Pain

Median Time-to-Event (days (95%ci)) Treatment: 17.0 (5.0, 30.0), Control: 12.0 (7.0, 15.0), P= 0.082



Kaplan-Meier Product-Limit Estimates: Symptom Duration 6-10 Days

Q32 Lack of Energy

Median Time-to-Event (days (95%ci)) Treatment: 21.0 (15.0,), Control: (27.0,), P= 0.044*

