

The tryptophan catabolite or kynurenine pathway in affective disorders: a systematic review and meta-analysis.

SHORT TITLE: Kynurenine pathway in affective disorders

Abbas F. Almulla, Ph.D.^{a,b}, Yanin Thipakorn, M.D., Ph.D.^a, Asara Vasupanrajit, MS.c^a, Ali Abbas Abo Algon, MS.c^c, Chavit Tunvirachaisakul, M.D., Ph.D.^a, Ashwan Abdulzahra Hashim Aljanabi M.D., Ph.D.^{d,e}, Gregory Oxenkrug, M.D., Ph.D.^f, Hussein K. Al-Hakeim, Ph.D.^g, Michael Maes, M.D., Ph.D.^{a,h,i}

^a Department of Psychiatry, Faculty of Medicine, Chulalongkorn University, Bangkok, Thailand.

^b Medical Laboratory Technology Department, College of Medical Technology, The Islamic University, Najaf, Iraq.

^c Iraqi Education Ministry- Najaf- Iraq.

^d Department of Medicine, Faculty of Medicine, University of Kufa,

^e Department of Psychiatry Al-Hakeem General Hospital

^f Department of Psychiatry, Tufts University School of Medicine and Tufts Medical Center, Boston, MA 02111, USA.

^g Department of Chemistry, College of Science, University of Kufa, Kufa, Iraq.

^h Department of Psychiatry, Medical University of Plovdiv, Plovdiv, Bulgaria.

ⁱ Department of Psychiatry, IMPACT Strategic Research Centre, Deakin University, Geelong, Victoria, Australia.

Corresponding author:

Prof. Dr Michael Maes, M.D., Ph.D.

Department of Psychiatry

Faculty of Medicine, Chulalongkorn University

Bangkok, 10330

Thailand

Email: Dr.michaelmaes@hotmail.com

E-mail addresses:

Abbass.chem.almulla1991@gmail.com

Yanin.T@chula.ac.th

asara.vasu@gmail.com

ali.aboalgon@gmail.com

Chavit.tun@gmail.com

Ashwana.aljanaby@uokufa.edu.iq

goxenkrug@tuftsmedicalcenter.org

headm2010@yahoo.com

dr.michaelmaes@hotmail.com

ESF, Table 1. Search sentences and terms were used in each database

Database Name	Search Sentence	No. of Articles
PubMed/Medline	((((((((((TRYCATs and MDD) OR (TRYCATs and MDD)) OR (Tryptophan Catabolites and MDD)) OR (L-TRP and MDD)) OR (L-KYN and MDD)) OR (KYNA and MDD)) OR (ANA and MDD)) OR (3-HK and MDD)) OR (XA and MDD)) OR (3-HA and MDD)) OR (QA and MDD)) OR (PA and MDD)	2133
	((((((((((Bipolar and TRYCATs)* OR (Bipolar and Tryptophan)) OR (Bipolar and tryptophan cata)) OR (Bipolar and TRYCATs)) OR (Bipolar and TRP)) OR (BD and KYN)) OR (BD and kynurenine)) OR (Bipolar Kynurenine pathway)) OR (BD and kynurenine pathway)) OR (Bipolar and IDO)) OR (Bipolar and TDO)	506
	((((((((((Unipolar and TRYCATs)* OR (Unipolar and Tryptophan)) OR (Unipolar and tryptophan cata)) OR (Unipolar and TRYCATs)) OR (Unipolar and TRP)) OR (UD and KYN)) OR (UD and kynurenine)) OR (Unipolar Kynurenine pathway)) OR (UD and kynurenine pathway)) OR (Unipolar and IDO)) OR (Unipolar and TDO)	105
	((((((((((Mania and TRYCATs)* OR (Mania and Tryptophan)) OR (Hypomania and tryptophan cata)) OR (Hypomania and TRYCATs)) OR (Mania and TRP)) OR (Mania and KYN)) OR (Mania and kynurenine)) OR (Mania Kynurenine pathway)) OR (Mania and kynurenine pathway)) OR (Mania and IDO)) OR (Mania and TDO)	77
Google Scholar	((((Depression* and IDO activation) OR (TDO activation)) OR (Kynurenine pathway)) OR (KMO activation)) OR (Tryptophan degradation)) AND (Decreased Tryptophan)	4960
	((((Bipolar Disorder* and IDO activation) OR (TDO activation)) OR (Kynurenine pathway)) OR (KMO activation)) OR (Tryptophan degradation)) AND (Decreased Tryptophan)	1750
	((((Mania* and IDO activation) OR (TDO activation)) OR (Kynurenine pathway)) OR (KMO activation)) OR (Tryptophan degradation)) AND (Decreased Tryptophan)	770

SciFinder	Major depressive disorder and kynurenine pathway, Major depressive disorder and tryptophan catabolism pathway, Major depressive disorder and TRYCATs, Major depressive disorder and kynurenine, Major depressive disorder and tryptophan, Major depressive disorder kynurenic acid, Depression and kynurenine pathway	668
	Bipolar Disorder and kynurenine pathway, Bipolar Disorder and tryptophan catabolism pathway, Bipolar Disorder and TRYCATs, Bipolar Disorder and kynurenine, Bipolar Disorder and tryptophan, Bipolar Disorder kynurenic acid, Bipolar Disorder and kynurenine pathway	61

ESF, Table 2. Immune cofounder's scale (ICS) applied from Andrés-Rodríguez, et al., 2019

Methodological quality of the study		
1	Study sample \geq 128 participants including patients and controls (1= Yes, 0 = No)	
2	Did the study control the results for potential confounders (e.g., age, BMI, gender, race)? (1= Yes, 0 = No)	
3	Were participants with affective disorders and controls age- and-gender-matched or was there a statistical control? (1= Yes, 0 = No)	
4	Was the time of sample collection specified (e.g., morning vs. evening)? (1= Yes, 0 = No)	
5	Were participants with affective disorders free of immunomodulatory drugs including anti-cytokines, glucocorticoids, immunoglobulins, and immunosuppressants, or was there a medication washout period, or was drug intake statistically controlled for? (1= Yes, 0 = No)	
6	Were participants with affective disorders free of antidepressants and mood stabilizers or were the data statistically controlled for? (1= Yes, 0 = No)	
7	Reporting either the manufacturer of the test or detection limit and coefficients of variation (1= Yes, 0 = No)	
8	Reporting how data under detection limit were handled (1 = Yes, 0 = No)	
9	Reporting % of the sample under detection limit (1=Yes, 0= No)	
10	Reporting blood fraction (serum, plasma, culture supernatant or whole blood) (1= Yes, 0 = No)	
Total quality score (10 points)		
Biomarker confounders red points		

<i>The red points should not be given if the item is statistically controlled for</i>		
1	3 red points for comorbid illnesses such as autoimmune disorders & other immune disorders including rheumatoid arthritis, psoriasis, inflammatory bowel disease, chronic obstructive pulmonary disease, multiple sclerosis	
2	3 red points for use of recreational drugs such as methamphetamine or opioids	
3	2 red points when groups were not matched for age	
4	2 red points when groups were not matched for sex	
5	2 red points for medication use as for example immunomodulators	
6	2 red points for early traumatic life events	
7	2 red points for shift work and primary sleep disorders	
8	1.5 red points for use of antipsychotics	
9	1 red point for more common systemic immune disorders including diabetes type 1/2, essential hypertension, metabolic syndrome	
10	1 red point for not fasting (8 hours before blood extraction)	
11	1 red point for use of omega-3 and antioxidant supplements	
12	1 red point when data were not controlled for body mass index	
13	1 red point when data were not controlled for physical activity or sedentary life	
14	1 red point when data were not controlled for smoking	

15	1 red point for use of oral contraceptives or NSAIDs	
16	0.5 red points when data were not controlled for ethnicity in countries such as US, Brazil	
17	0.5 red points when data were not controlled for seasonality	
18	0.5 red points when data were not controlled for diurnal variation (8-10 a.m. versus all other time points)	
Total red point score (26 points)		

ESF, Table 3. PRISMA checklist

Section/topic	#	Checklist item	Reported on page #
TITLE			
Title	1	Identify the report as a systematic review, meta-analysis, or both.	1
ABSTRACT			
Structured summary	2	Provide a structured summary including, as applicable: background; objectives; data sources; study eligibility criteria, participants, and interventions; study appraisal and synthesis methods; results; limitations; conclusions and implications of key findings; systematic review registration number.	3
INTRODUCTION			
Rationale	3	Describe the rationale for the review in the context of what is already known.	5
Objectives	4	Provide an explicit statement of questions being addressed with reference to participants, interventions, comparisons, outcomes, and study design (PICOS).	8
METHODS			
Protocol and registration	5	Indicate if a review protocol exists, if and where it can be accessed (e.g., Web address), and, if available, provide registration information including registration number.	9
Eligibility criteria	6	Specify study characteristics (e.g., PICOS, length of follow-up) and report characteristics (e.g., years considered, language, publication status) used as criteria for eligibility, giving rationale.	10
Information sources	7	Describe all information sources (e.g., databases with dates of coverage, contact with study authors to identify additional studies) in the search and date last searched.	9
Search	8	Present full electronic search strategy for at least one database, including any limits used, such that it could be repeated.	ESF, Table 1, page 3
Study selection	9	State the process for selecting studies (i.e., screening, eligibility, included in systematic review, and, if applicable, included in the meta-analysis).	10
Data collection process	10	Describe method of data extraction from reports (e.g., piloted forms, independently, in duplicate) and any processes for obtaining and confirming data from investigators.	11

Data items	11	List and define all variables for which data were sought (e.g., PICOS, funding sources) and any assumptions and simplifications made.	11
Risk of bias in individual studies	12	Describe methods used for assessing risk of bias of individual studies (including specification of whether this was done at the study or outcome level), and how this information is to be used in any data synthesis.	12
Summary measures	13	State the principal summary measures (e.g., risk ratio, difference in means).	12
Synthesis of results	14	Describe the methods of handling data and combining results of studies, if done, including measures of consistency (e.g., I^2) for each meta-analysis.	12
Risk of bias across studies	15	Specify any assessment of risk of bias that may affect the cumulative evidence (e.g., publication bias, selective reporting within studies).	Table 3, page 71
Additional analyses	16	Describe methods of additional analyses (e.g., sensitivity or subgroup analyses, meta-regression), if done, indicating which were pre-specified.	12
RESULTS			
Study selection	17	Give numbers of studies screened, assessed for eligibility, and included in the review, with reasons for exclusions at each stage, ideally with a flow diagram.	14
Study characteristics	18	For each study, present characteristics for which data were extracted (e.g., study size, PICOS, follow-up period) and provide the citations.	ESF, Table 2 page
Risk of bias within studies	19	Present data on risk of bias of each study and, if available, any outcome level assessment (see item 12).	Table 3, page 71
Results of individual studies	20	For all outcomes considered (benefits or harms), present, for each study: (a) simple summary data for each intervention group (b) effect estimates and confidence intervals, ideally with a forest plot.	Table 1, page 66
Synthesis of results	21	Present results of each meta-analysis done, including confidence intervals and measures of consistency.	Table 2, page 68
Risk of bias across studies	22	Present results of any assessment of risk of bias across studies (see Item 15).	Table 3 page 71
Additional analysis	23	Give results of additional analyses, if done (e.g., sensitivity or subgroup analyses, meta-regression [see Item 16]).	Table 2, page 68

DISCUSSION			
Summary of evidence	24	Summarize the main findings including the strength of evidence for each main outcome; consider their relevance to key groups (e.g., healthcare providers, users, and policy makers).	Page 22-31
Limitations	25	Discuss limitations at study and outcome level (e.g., risk of bias), and at review-level (e.g., incomplete retrieval of identified research, reporting bias).	Page 31-32
Conclusions	26	Provide a general interpretation of the results in the context of other evidence, and implications for future research.	Page 32
FUNDING			
Funding	27	Describe sources of funding for the systematic review and other support (e.g., supply of data); role of funders for the systematic review.	Page 33

ESF, Table 4. Studies excluded from the meta-analysis.

Authors, year	Reason why excluded from the meta-analysis
(Meier, Drevets et al. 2018)	No data about healthy control group
(Møller, Kirk et al. 1980)	No baseline level of tryptophan
(Nazzari, Molteni et al. 2020)	No data about healthy control group

ESF, table 5. Characteristics of the studies included in the systematic reviews and meta-analysis

NO	Authors, years	Setting	Type of case	Type of Control	Sample Size			Age		Assessed Biomarkers	Specimen	Method	Quality score	Red point score	Findnigs
					Cases M/F	Control M/F	Total M/F	Case-Mean (SD)	Control-Mean(SD)						
1	Aarsland, Leskauskaitte et al. 2019	Norway	MDD	Healthy Control	27 12/15	14 6/8	41 18/23	45,3(10,7)	-	TRP,KYN, KA,3HK, XA, AA, 3HA,QA,PA	Serum	LCMS	5,75	13,5	TRP*,KYN#, KA*,3HK*, XA*, AA*, 3HA*,QA#,PA*
2	Achtyes, Keaton et al. 2020	USA	Post partum depression	Healthy Control	87 0/87	60 0/60	147 0/147	26,7(5,2)	28(6,3)	TRP, KYN, KA,QA	Plasma	HPLC-UV	5,75	14	TRP*, KYN*, KA*,QA*
3	van den Ameele, van Nuijs et al. 2020	Belgium	BD-Depression	Healthy Control	35 11/24	35 16/29	70 27/53	43,7(9,7)	42,7(11,6)	TRP, KYN, 3HK,QA, KA	Plasma	UPLC-MS/MS	7,75	10	TRP*, KYN*, 3HK*,QA*, KA*
			BD-hypomania	Healthy Control	32 15/17	35 16/29	67 31/46	42,4(12,7)	42,7(11,6)	TRP, KYN, 3HK,QA, KA	Plasma	UPLC-MS/MS			TRP*, KYN*, 3HK*,QA*, KA*
4	Anderson, Parry-Billings et al. 1990	UK	MDD	Healthy Control	32 15/16	31 15/16	62 30/32	34,4(8,5)	33,9(7,7)	TRP	Plasma	Fluorometry	4	12,5	TRP*
5	Baranyi, Amouzadeh-Ghadikolai et al. 2017	Austria	MDD	Healthy Control	61 20/41	45 14/31	106 34/72	49,8(9,6)	44,8(17,9)	QA	Serum	LCMS	4	15,5	QA*
6	Bay-Richter, Linderholm et al. 2015	Sweden	Affective disorders	Healthy Control	30 9/21	36 29/7	66 38/28	40(8,7)	29,7(7,3)	QA,KA	CSF	GCMS,HPLC	3	18,5	QA#,KA*
7	Birner, Platzer et al. 2017	Austria	BD	Healthy Control	143 80/63	101 40/61	244 120/124	43,9(13,3)	40,3(16,4)	KYN,KA, 3HK, AA	Plasma	LC-MS/MS	6	18,5	KYN#,KA*, 3HK#, AA#
8	Bradley, Case et al. 2015	USA	MDD-Non suicidal	Healthy Control	30 18/12	22 9/13	52 27/25	15,2(1,9)	15,9(2,6)	TRP, KYN, 3HA	Plasma	HPLC	4,25	16	TRP#, KYN#, 3HA#
			MDD-suicidal	Healthy Control	20 5/15	22 9/13	42 14/28	16,8(1,8)	15,9(2,6)	TRP, KYN, 3HA	Plasma	HPLC			TRP#, KYN#, 3HA*
9	Brundin, Sellgren et al. 2016	Sweden	MDD	Healthy Control	22 -	36 -	58 -	42,1(13,6)	32,5(11,3)	PA	CSF	GCMS	5,5	18	PA*
			Dysthymia	Healthy Control	4 -	36 -	40 -	44,3(23,3)	32,5(11,3)	PA	CSF	GCMS			PA*
			Depression NOS	Healthy Control	9 -	36 -	45 -	30,8(6,6)	32,5(11,3)	PA	CSF	GCMS			PA*
			MDD	Healthy Control	15 -	29 -	44 -	43,1(13,5)	40,6(11,5)	PA, QA	Plasma	GCMS			PA*, QA#
			Dysthymia	Healthy Control	3 -	29 -	32 -	43,0(18,9)	40,6(11,5)	PA, QA	Plasma	GCMS			PA*, QA*

			BD	Healthy Control	21 -	29 -	50 -	39.2(12.4)	40.6(11.5)	PA, QA	Plasma	GCMS			PA*, QA [#]
			Depression UNS	Healthy Control	4 -	29 -	33 -	28.1(8.5)	40.6(11.5)	PA, QA	Plasma	GCMS			PA*, QA [#]
10	Busse, Busse et al. 2015	Germany	Depression	Healthy Control	6 2/4	10 5/5	16 7/9	47(10)	56(6)	QA	Brain Tissue	-	2,75	16	QA*
11	Carrillo-Mora, Pérez-De la Cruz et al. 2020	Mexico	Poststroke depression	Healthy Control	38 21/17	22 14/8	60 35/25	57.3(13,4)	57,9(14,7)	3HK, KA	Serum	HPLC	6,25	10,25	3HK [#] , KA [#]
12	Castillo, Murata et al. 2019	USA	Bipolar-Depression	Healthy Control	55 27/28	38 16/22	93 43/50	52.9(9.8)	40.6(10.2)	QA	Serum	UPLC-MS	6	13,5	QA*
13	Cathomas, Guetter et al. 2021	Switzerland	MDD	Healthy Control	43 17/26	19 9/10	62 26/36	35,7(10,8)	32,5(9,4)	KYN,KA,3HK,QA,TRP	Plasma	HPLC	5	16	KYN*,KA*,3HK*,QA*,TRP*
14	Chiaroni, Azorin et al. 1990	Switzerland	DD	Healthy Control	21 11/10	33 14/19	54 25/29	41.5(11.5)	39.4(8.3)	TRP	Plasma	HPLC	5	16,5	TRP*
			MRD		25 6/19		58 20/38	59.04(11.4)							TRP*
			BD		18 7/11		51 21/30	58.1(12.3)							TRP*
15	Cho, Savitz et al. 2017	USA	MDD	Healthy Control	68 13/58	66 24/42	134 37/97	36,2(9,9)	32,3(10,2)	TRP,KYN,KA,3HK,QA	Serum	HPLC MS/MS	5,25	15	TRP*,KYN*,KA*,3HK*,QA*
			Previous MDD		26 9/17		92 33/59	33,3(11,1)							TRP*,KYN*,KA*,3HK*,QA [#]
16	Clark, Pocivavsek et al. 2016	USA	Depression	Healthy Control	45 30/15	36 27/9	91 57/24	43.3(13.6)	42.1(14.3)	TRP,KYN,KA,3-HK,QA	Brain Tissue	HPLC,GC/MS	2,75	17,5	TRP*,KYN*,KA*,3-HK*,QA*
17	Colle, Masson et al. 2020	France	MDE	Healthy Control	173 61/112	214 90/124	387 150/237	48	45,5	TRP,AA,KA KYN,PA,XA 3HA	Plasma	UPLC-MS	5	11,5	TRP [#] ,AA*,KA* KYN*,PA*,XA* 3HA*
18	Coppen, Brooksbank et al. 1972	UK	MDD	Healthy Control	10 2/8	14 7/7	24 9/15	49,7(16,4)	50,4(13,3)	TRP	CSF	Fluorometry	1	21	TRP*
			Mania		3 1/2		17 8/9	43,6(17,6)							TRP*
19	Coppen, Eccleston et al. 1973	UK	UD	Healthy Control	24 0/24	26 0/26	50 0/50	55,3(13,7)	48,6(11,2)	TRP	Plasma	Fluorometry	4,75	15	TRP*
20	Cowen, Parry-Billings et al. 1989	UK	MDD	Healthy Control	12 6/6	12 6/6	24 12/12	36,5 (26-55)	36,2 (28-54)	TRP	Plasma	Fluorometry	6,75	11	TRP*
21	Czermak, Hauger et al. 2008	USA	MDD-remitted	Healthy Control	28 8/20	26 8/18	54 16/38	39,5(12,5)	33,8(11,2)	TRP	Plasma	HPLC	4,5	12,5	TRP*
22	Dahl, Andreassen et al. 2015	Norway	MDD	Healthy Control	50 12/38	34 15/19	84 27/57	40(12)	38,3(13,9)	TRP,KYN,KA,QA	Plasma	HPLC	4,25	15	TRP [#] ,KYN*,KA*,QA*
23	DeMyer, Shea et al. 1981	USA	Depression	Healthy Control	18 5/13	10 3/7	28 8/20	33.4	33.3	TRP	Plasma	Fluorometry	4,5	14	TRP*

24	DeWitt, Bradley et al. 2018	USA	MDD	Healthy Control	14 3/11	7 3/4	21 6/15	16,7(3,04)	16,53(1,7)	KYN/TRP, KA, QA	Plasma	LCMS/MS	3,75	16,5	KYN/TRP [#] , KA*, QA*
25	Doolin, Allers et al. 2018	Ireland	First presentation MDD	Healthy Control	39 16/23	37 18/19	76 43/42	24,3(7.6)	30.8(10.7)	TRP, KYN QA, KA	Plasma	LC-MS/MS	5	9	TRP*, KYN* QA*, KA*
			Remitted-MDD		35 11/24	37 18/19	72 29/43	42.4(11.5)							TRP*, KYN* QA*, KA*
26	Ebesunun, Eruvulobi et al. 2012	Nigeria	MDD	Healthy Control	30 9/21	30 -	60	37,9(2)	42,5(1)	TRP	Plasma	HPLC	4,25	15	TRP*
27	Erabi, Okada et al. 2020	Japan	MDD	Healthy Control	88 46/42	88 40/48	176 86/90	42,9(12,2)	41,3(12,7)	TRP, KYN, 3HK	Plasma	LCMS	5,25	15	TRP*, KYN*, 3HK*
28	Erhardt, Lim et al. 2013	Sweden	MDD	Healthy Control	29	7	36	-	30(18-66)	KA, QA	CSF	HPLC-GCMS	4,5	15	KA*, QA [#]
29	Gabbay, Klein et al. 2010	USA	MDD-M	Healthy Control	20 9/11	22 9/13	42 18/24	15,6(2.0)	16,0(2,7)	TRP, KYN	Plasma	HPLC	6,25	9,5	TRP*, KYN*
			MDD-non M		30 14/16		52 23/29	16,3(2,1)							TRP [#] , KYN*
30	Georgin-Lavialle, Moura et al. 2016	France	Depressive symptoms	Healthy Control	54	54	108	50,1	50	TRP, KYN,QA, KA	Plasma	HPLC	3	18	TRP*, KYN*,QA [#] , KA [#]
31	Gerner, Fairbanks et al. 1984	USA	Depression	Healthy Control	41 18/23	38 18/20	79 36/43	40,3(11,07)	33,4(11,7)	TRP	CSF	LC	3,5	16	TRP*
			Mania		15 5/10		51 28/5	35,7(11,4)							TRP*
32	Guicheney, Léger et al. 1988	France	Depressive symptoms	Healthy Control	31	14	45	-	-	TRP	Plasma		5	13,5	TRP*
33	Manjarrez-Gutierrez, Marquez et al. 2009	Mexico	MDD	Healthy Control	8 4/4	9 4/5	17 8/9	14,8(0,6)	14,2(2,1)	TRP	Plasma	HPLC	6	10,5	TRP*
			MDD-DM		9 6/3		18 10/8	14,4(1,6)							TRP*
34	Hayward, Goodwin et al. 2005	UK	Euthymia	Healthy Control	24 10/14	24 10/14	48 20/28	38,8(3,5)	37,4(3,9)	TRP	Plasma	HPLC	6	12,5	TRP [#]
35	Healy, Carney et al. 1982	Ireland	Depression	Healthy Control	18 -	20 -	38 -	40,02(12,1)	32	TRP	Plasma	Ultrafiltration apparatus	4	14,5	TRP [#]
36	Heilman, Hill et al. 2019	USA	Affective disorder	Healthy Control	96 41/55	56 27/29	152 68/84	35,8(7,5)	31,3(8,6)	TRP,KYN, KA,QA,PA	Plasma	HPLC	6,25	12	TRP*,KYN*, KA*,QA*,PA [#]
37	Hennings, Schwarz et al. 2013	Germany	MDD	Healthy Control	38 15/23	48 16/32	86 31/55	32,08(12,2)	36,4(13,2)	TRP, KYN	Serum	HPLC	5	13	TRP [#] , KYN*
38	Hoekstra, van den Broek et al. 2001	Netherland	MDD	Healthy Control	20 7/13	29 13/16	49 23/26	52(13,1)	37(8,3)	TRP	Plasma	HPLC	3	19	TRP*

39	Hoekstra, Fekkes et al. 2006	Netherlands	BD	Healthy Control	20 14/6	20 14/6	40 28/12	50,2(13,8)	50,1(13,5)	TRP	Plasma	HPLC	3,75	15	TRP*
40	Hu, Li et al. 2017	China	MDD	Healthy Control	54	26	80	-	-	TRP,KYN, KA	Serum	HPLC MS/MS	4,25	20,5	TRP*,KYN*, KA*
41	Hüfner, Oberguggenberger et al. 2015	Austria	Depression	Healthy Control	29	28	57	53,9(1,6)	42,9(2,1)	KYN/TRP	Serum	HPLC	6	13	KYN/TRP*
					46		74	43,9(1,6)							KYN/TRP#
42	Hughes, Carballedo et al. 2012	Ireland	MDD	Healthy Control	39 16/23	39 17/22	78 33/45	41,9(11,2)	37,1(13,1)	TRP,KYN, KA,3HA	Plasma	HPLC	5,5	12,5	TRP*,KYN*, KA*,3HA*
43	Joseph, Brewerton et al. 1984	USA	MDD	Healthy Control	8 3/5	8 3/5	16 6/10	45(17)	42(16)	TRP	Plasma	HPLC	6,5	9	TRP*
					8 3/5	8 3/5	16 6/10	42(13)							TRP*
44	Karege, Widmer et al. 1994	Switzerland	MDD	Healthy Control	30 10/20	20 10/10	50 20/30	47(10)	47(9)	TRP	Plasma	HPLC	6	12,5	TRP*
45	Krause, Myint et al. 2017	Germany	MDD	Healthy Control	32 16/16	20 15/5	52 31/21	44,6(11,6)	40(10,4)	KYN,KA	Serum	HPLC	6,75	9	KYN*,KA*
46	Krause, Kirmich et al. 2019	Germany	MDD	Healthy Control	39 15/24	51 18/33	90 33/57	32,6(12,5)	36,5(13,1)	TRP, KYN, KA, 3HK	Serum	HPLC	7	4,5	TRP*, KYN*, KA*, 3HK*
47	Kuwano, Kato et al. 2018	Japan	MDD	Healthy Control	15 9/6	19 10/9	34 19/15	30,1(7,6)	30,2(6,8)	TRP,KYN, KA,XA	Plasma	LC-MS	4,75	12,5	TRP*,KYN*, KA*,XA*
48	Liu, Ding et al. 2018	China	MDD	Healthy Control	33 10/23	23 12/11	56 22/34	28,3(5,2)	29,3(5,8)	TRP,KYN, KA, QA	Plasma	UPLC-3Q-MS	6,75	9,5	TRP*,KYN*, KA*, QA*
			BD		20 8/12		43 20/23	30,4(5,08)							TRP*,KYN*, KA*, QA*
49	Lucca, Lucini et al. 1992	Italy	BD	Healthy Control	9 4/5	29 15/14	38 19/19	44,2(9,7)	40,1(9,3)	TRP	Plasma		5	13	TRP*
			MDD		19 7/12		48 22/26	44,5(11,7)							TRP*
50	Maes, Jacobs et al. 1990	Belgium	MDD	Healthy Control	15 6/9	16 8/8	31 14/17	41,0(15,8)	40,1(10,1)	TRP	Plasma	LC	6	10,5	TRP*
					22 10/12		38 18/20	43,9(13,8)							TRP*
					13 6/7		29 14/15	52,2(14,5)							TRP*
51	Maes, Meltzer et al. 1993	Belgium	MDD	Healthy Control	7	8	15	33,0(13,1)	44,1(13,1)	TRP	Plasma	LC	6,75	9,5	TRP*
					7		15	51,7(17,0)							TRP*
					10		18	54,8(12,5)							TRP*
52	Maes, De Backer et al. 1995	Belgium	MDD	Healthy Control	41 17/24	50 26/24	91 43/48	42,1(14,2)	40,7(11,3)	TRP	Plasma	LC	6,25	12	TRP*
					47 12/35		97 38/59	47,3(13,5)							TRP*
					35 14/21		85 40/45	51,7(15,0)							TRP*
53		Belgium	MDD		12	24	36	42,8(11,9)	41,1(13,5)	TRP	Serum	HPLC	5,75	11,5	TRP*

	Maes, Wauters et al. 1996			Healthy Control	4/8 21 3/18 9 3/6	11/13	15/21 45 14/31 33 14/19	48,7(14,3) 58,7(14)								TRP*
54	Maes, Galecki et al. 2011	Germany	MDD	Healthy Control	39 10/29 36 13/23	35 17/18	74 27/47 71 30/41	40,2(10,4) 41,9(9,9)	38(11.9)	TRP, KYN, KA	Plasma	HPLC	8	7,5		TRP*, KYN*, KA*
55	Maes and Rief 2012	Germany	MDD	Healthy Control	35 13/22	22 14/8	57 27/30	42,1(10) 40,2(10,4)	39(13)	TRP, KYN/TRP, KYN/KA	Plasma	HPLC	8	7,5		TRP*, KYN/TRP#, KYN/KA# TRP*, KYN/TRP#, KYN/KA#
56	Maes, Verkerk et al. 1997	Belgium	MDD	Healthy Control	35 17/18	15 10/5	50 27/23	50,7(14,4)	47,5(15)	TRP	Serum	HPLC	6,75	9		TRP*
57	Mauri, Ferrara et al. 1998	Italy	MDD	Healthy Control	29 15/14	28 16/12	57 31/26	47,4(10,8)	42,4(14.1)	TRP	Plasma	LC	5	11		TRP*
58	Mauri, Boscati et al. 2001	Italy	MDD	Healthy Control	16 5/11	11 9/2	27 14/13	50,1(11,5)	39,9(13.3)	TRP	Plasma	LC	5	13,5		TRP*
59	Meier, Drevets et al. 2016	USA	MDD	Healthy Control	73 16/57	91 36/55	164 52/112	34,2(9,3)	31,6(9,3)	TRP,KYN, KA,3HK,QA	Serum	HPLC MS/MS	7,25	10		TRP*,KYN*, KA*,3HK#,QA#
60	Menna-Perper 1983	USA	MDD-M	Healthy Control	9 6/3	6 3/3	-	-	-	TRP	Plasma	-	-	-		TRP*
61	Milaneschi, Allers et al. 2021	Netherland	MDD-remitted MDD-current	Healthy Control	753 226/527 1100 358/743	642 246/396	1395 472/923 1742 603/1139	43,5(12,5) 40,8(12,1)	41,1(14,7)	TRP,KYN, KA, QA	Plasma	-	3	17,5		TRP*,KYN*, KA*, QA* TRP#,KYN*, KA*, QA*
62	Miller, Llenos et al. 2006	USA	MDD BD	Healthy Control	14 14	14 14	28 28	45,9(9,7) 41,8(11,9)	48,6(10,8)	KYN, KA	Brain Tissue	HPLC	4,75	12,5		KYN#, KA# KYN#, KA#
63	Moaddel, Shardell et al. 2018)	USA	MDD	Healthy Control	29	25	54	-	-	TRP, KYN	Plasma	HPLC	5	12,5		TRP*, KYN*
64	Møller 1993	Denmark	Depression	Healthy Control	26 8/18	55 16/39	81 24/57	52(10)	38(13)	TRP	Plasma	IEC	3,25	17		TRP*
65	Moller, Kirk et al. 1976	Denmark	Depression	Healthy Control	19 2/17	23 2/21	42 4/38	54,1(21,8)	48,8(15,7)	TRP, KYN	Plasma	IEC	5	15		TRP*, KYN*
66	Møller, Kirk et al. 1982	Denmark	Depression	Healthy Control	-	-	-	44(14)	40(11)	TRP	Plasma	IEC	7,75	9,5		TRP*
67	Moreno, Gelenberg et al. 1999	Mexico	MDD	Healthy Control	12 4/8	12 4/8	24 8/16	48(19)	47(18)	TRP	Plasma	HPLC-F	5,5	9		TRP*
68	Moreno, Gaspar et al. 2013	USA	MDD	Healthy Control	30 6/24	30 6/24	60 12/48	30,2(10,6)	34,5(7,7)	TRP	Plasma	HPLC	7	6,5		TRP*
69	Mukherjee, Krishnamurthy et al. 2018	USA	BD	Healthy Control	21 11/10	28 12/16	49 23/26	36,1(11,3)	31,5(10,3)	TRP, KYN	Plasma	HPLC	3,75	13		TRP*, KYN*

70	Murata, Murphy et al. 2020	USA	TRBDD	Healthy Control	47 28/19	41 28/13	88 56/32	42.3(12.3)	39.6(13.5)	KYN/TRP	Serum	HPLC	5,75	10,5	KYN/TRP*
71	Myint, Kim et al. 2007a	South Korea	BD	Healthy Control	39 15/24	80 40/40	119 55/64	37.6(11.6)	39.0(8.7)	TRP, KYN, KA, 3HA	Plasma	HPLC	6	12	TRP*, KYN*, KA*, 3HA [#]
72	Myint, Kim et al. 2007b	South Korea	Depression	Healthy Control	58 48/10	189 32/157	247 80/167	44.6(14.6)	32.4(10.6)	TRP, KYN, KA, 3HA	Plasma	HPLC	5,75	15	TRP*, KYN*, KA*, 3HA [#]
73	Nikkheslat, Zunszain et al. 2015	UK	Depression	Healthy Control	15	29	44	-	-	TRP, KYN, KA, 3HK, 3HA	Serum	HPLC	4,25	15	TRP*, KYN*, KA*, 3HK*, 3HA*
74	Ogawa, Koga et al. 2018	Japan	MDD	Healthy Control	147 74/73	217 100/117	364 174/190	42,1(12,1)	41,2(13,9)	TRP	Plasma	HPLC	5,5	14,5	TRP*
75	Olsson, Samuelsson et al. 2010	Sweden	BD	Healthy Control	31 31/0	23 23/0	54 54/0	36.3(9.2)	33.1(6.9)	KA	CSF	HPLC	4,75	14,5	KA [#]
76	Ortiz, Mariscot et al. 1993	Spain	MDD	Healthy Control	10	10	20	39,8(9,1)	-	TRP	Plasma	HPLC	4	16	TRP*
					7		17	68,2(4,8)							TRP*
77	Öztürk, Yalın Sapmaz et al. 2021	Turkey	MDD	Healthy Control	48 3/45	31 1/30	79 4/75	15.2(1.4)	14.8(1.3)	TRP, KYN, KA, QA	Serum	ELISA			TRP*, KYN [#] , KA [#] , QA [#]
78	Pan, Xia et al. 2018	China	MDD	Healthy Control	50 24/26	50 25/25	100 49/51	36.9(9.1)	38.3(11.3)	TRP, KYN, 3HA	Plasma	LC-MS/MS	4,5	14	TRP*, KYN*, 3HA [#]
					49 23/26	40 22/18	89 45/44	37.7(11.9)	36.8(10.1)	KYN	Plasma	GC-MS			KYN*
			30 13/17		70 35/35	35.8(10.7)	KYN*								
79	Paul, Schwieler et al. 2022	Sweden	MDD	Healthy Control	63 19/44	48 14/34	111 33/78	27.5(17.2)	32(24)	KYN, KA, 3HK, QA, PA	Plasma	UPLC-MS/MS	6	12	KYN [#] , KA*, 3HK*, QA [#] , PA*
					36 11/25	33 11/22	69 22/47	31(18.3)	26(17)		CSF				KYN*, KA*, 3HK*, QA [#] , PA*
80	Pinto, de Souza et al. 2012	Brazil	BD	Healthy Control	5	5	10	34(17.4)	34(13.07)	TRP	Plasma	HPLC	4,75	9	TRP*
81	Platzer, Dalkner et al. 2017	Austria	BD	Healthy Control	42 42/0	36 36/0	78 78/0	43.6(14.3)	38.1(15.1)	TRP, KYN, KA, 3HK	Serum	UPLC-MS/MS	3	19,5	TRP*, KYN [#] , KA*, 3HK [#]
					26 0/26	57 0/57	83 0/83	47.0(13.5)	39.4(16.9)						TRP*, KYN*, KA*, 3HK [#]
82	Poletti, Melloni et al. 2019	Italy	BD	Healthy Control	55 20/35	36 13/23	91 33/58	47.2(9.8)	43.8(12.2)	TRP, KYN	Plasma	HPLC	6	10,5	TRP*, KYN [#]
			Mania		17 9/8		53 22/31	50.3(11.9)	43.8(12.2)						TRP*, KYN [#]
83	Poletti, Myint et al. 2018	Italy	BD	Healthy Control	22 8/14	14 6/8	36 14/22	46.5(13.6)	27.2(8.3)	TRP, KYN 3HK, KA	Plasma	HPLC	4,75	12,5	TRP*, KYN* 3HK [#] , KA*
84	Pompili, Lionetto et al. 2019	Italy	MDD	Healthy Control	49 24/25	78 34/44	127 58/69	36,6(8,5)	40,4(12,3)	TRP, KYN AA, XA	Plasma	LCMS	3	18,5	TRP*, KYN AA, XA

85	Porter, Gallagher et al. 2003	UK	MDD	Healthy Control	20 9/11	20 10/10	40 19/21	34(11)	33(12)	TRP	Plasma	HPLC	5,75	13,5	TRP*
86	Price, Charney et al. 1991	USA	Depression	Healthy Control	126 38/88	58 17/41	184 58/126	43(14)	38(13)	TRP	Serum	HPLC	7	15	TRP*
87	Quak, Doornbos et al. 2014	Netherland	MDD	Healthy Control	1042	1007	2049	40,9(12,1)	-	KYN/TRP	Plasma	XLC-MS/MS	6	9	KYN/TRP*
88	Quintana 1992	Spain	MDD	Healthy Control	25 10/15	25 10/15	50 20/30	54(9,3)	-	TRP	Plasma	-	5,75	13,5	TRP*
89	Reininghaus, McIntyre et al. 2014	Austria	BD	Healthy Control	78	156	234	46,8(14,07)	35,2(11,5)	KYN, KYN/TRP	Serum	HPLC	5,25	16,5	KYN [#] , KYN/TRP [#]
90	Rief, Pilger et al. 2004	Germany	MDD	Healthy Control	40 10/30	36 18/18	76 28/48	40,3(10,3)	37,8(11,8)	TRP	Plasma	-	6,75	13,5	TRP*
					36 13/23		72 31/41	42,3(10,3)							TRP*
91	Roiser, Levy et al. 2009	UK	MDD	Healthy Control	23 6/17	20 7/13	43 13/30	32,4(9,8)	30,5(7,3)	TRP	Plasma	-	3,75	11,5	TRP [#]
92	Russ, Ackerman et al. 1990	USA	Depression	Healthy Control	16 6/10	9 2/7	25 8/17	34(13)	37(9)	TRP	Plasma	Fluorometry	4,75	23	TRP*
93	Ryan, Allers et al. 2020	Ireland	Depression	Healthy Control	94 36/58	57 20/37	151 56/95	55,4(14,7)	51,7(11,4)	TRP, KYN KA, AA, 3HK, XA 3HA, QA PA	Plasma	LC/MS	6	13,5	TRP*, KYN* KA*, AA*, 3HK*, XA* 3HA*, QA* PA*
94	Sakurai, Yamamoto et al. 2020	Japan	Depression	Healthy Control	42 42/0	38 38/0	80 80/0	46(6,6)	46,1(7,4)	KYN,TRP 3HA,KA AA,3HK	Serum	HPLC	5	15,5	KYN*,TRP* 3HA*,KA* AA*,3HK*
					19 0/19	21 0/21	40 0/40	46,5(8,1)	43,3(7,3)						KYN*,TRP* 3HA*,KA* AA*,3HK [#]
95	Savitz, Dantzer et al. 2015a	USA	BD	Healthy Control	38 8/30	48 19/29	86 27/59	40,5(11,7)	32,6(10,3)	TRP, KYN KA, 3HK QA	Serum	HPLC MS/MS	5	14,5	TRP*, KYN* KA*, 3HK* QA [#]
					25 4/21		73 23/50	36,2(10,5)							TRP*, KYN* KA*, 3HK* QA [#]
96	Savitz, Dantzer et al. 2015b	USA	MDD	Healthy Control	29 5/24	20 10/10	49 15/34	36,4(10)	35(10,9)	KYN, KA 3HK, QA TRP	Serum	HPLC	6,75	9,5	KYN [#] , KA* 3HK*, QA* TRP*
97	Savitz, Dantzer et al. 2015c	USA	MDD-remitted	Healthy Control	21 9/12	58 25/33	79 34/45	30,8(12,2)	32,8(10,7)	TRP, KYN KA, 3HK QA	Serum	HPLC MS/MS	6,75	9,5	TRP*, KYN [#] KA*, 3HK* QA*
			MDD-current	Healthy Control	49 11/38		107	35,4(9,8)	32,8(10,7)						TRP*, KYN [#] KA*, 3HK [#] QA [#]
98	Savitz, Drevets et al. 2015d	USA	MDD	Healthy Control	53 11/42	47 18/29	100 29/71	34,6(9,8)	34,3(11,4)	TRP, KYN	Serum	LC-MS/MS	7	11,5	TRP*, KYN* KA*, 3HK [#] , QA [#]

										KA, 3HK, QA					
99	Schwieler, Samuelsson et al. 2016	Sweden	MDD	Healthy Control	19 11/8	14 14/0	33 25/8	39.9(23.2)	45.6(20.3)	KA, TRP KYN, QA	Plasma	HPLC	6,25	19	KA*, TRP* KYN*, QA#
100	Sellgren, Gracias et al. 2019	Sweden	BD	Healthy Control	163 64/99	114 52/62	277 116/161	34.2(3.3)	35.1(3.1)	KA	Plasma	HPLC	6	13,5	KA*
					94 39/55	113 51/62	207 90/117	36(20.5)	-		CSF				KA#
101	Shaw, Tidmarsh et al. 1980	UK	UD	Healthy Control	75 27/48	36 17/19	111 44/67	-	-	TRP	Plasma	kinetically	2	19	TRP*
			BD		22 10/12		58 27/31								TRP*
102	Song, Lin et al. 1998	Belgium	Depression	Healthy Control	6 2/4	14 6/8	20 8/12	50.3(15.3)	45.5(15.5)	TRP	Plasma	HPLC	4,25	13,5	TRP*
103	Sorgdrager, Doornbos et al. 2017	Netherlands	MDD	Healthy Control	625 202/423	406 163/243	1031 365/666	42.7(12.8)	42.9(14.7)	TRP, KYN	Serum	XLC-MS/MS	5,5	15,5	TRP#, KYN*
					695 215/480		1101 378/723	44.3(11.7)							TRP#, KYN*
104	Steen, Dieset et al. 2020	USA	BD	Healthy Control	73 33/40	68 33/35	141 66/75	31.0(19.0)	31.0(16.0)	3HK, XA	Plasma	LCECA	4,25	14,5	3HK*, XA*
105	Steiner, Walter et al. 2011	Germany	Depression	Healthy Control	12 6/6	10 5/5	22 11/11	51(9)	56(6)	QA	Brain Tissue	ELISA	3,75	16	QA#
106	Sublette, Galfalvy et al. 2011	USA	MDD	Healthy Control	30 16/14	31 10/21	61 26/35	37.8(13.08)	35.6(13.9)	TRP, KYN	Serum	HPLC	4	14	TRP*, KYN#
107	Sun, Drevets et al. 2020	Canada	MDD	Healthy Control	161 62/99	28 9/19	189 71/118	40.01(12.04)	46.5(14.5)	TRP, KYN 3HK, KA QA	Plasma	LC-MS	4,75	18	TRP*, KYN 3HK*, KA QA*
108	Teraishi, Hori et al. 2015	Japan	MDD	Healthy Control	18 8/10	24 12/12	42 20/22	39,9(10,1)	45,1(11,9)	TRP	Plasma	-	4	13	TRP*
109	Trepici, Sellgren et al. 2021	Sweden	BD	Healthy Control	101 40/61	80 39/41	181 79/102	44.2(13.9)	34.7(12.4)	TRP, KYN KA, PA, QA	CSF	UPLC-MS/MS	7	16,5	TRP*, KYN# KA#, PA#, QA#
110	Umebara, Numata et al. 2017	Japan	MDD	Healthy Control	33 10/23	33 10/23	66 20/46	47,1(13,2)	46,5(10,1)	KYN, KYN/TRP	Plasma	CE-TOFMS	6,75	12,5	KYN*, KYN/TRP*
111	Veen, Myint et al. 2016	Netherlands	Post Partum depression	Healthy Control	29 0/29	29 0/29	58 0/58	32.9(4.6)	25.04(5.4)	TRP,KYN, 3HK,QA,KA	Serum	LC-MS/MS	5	16	TRP#,KYN*, 3HK*,QA#,KA#
					23 0/23		52 0/52	31.8(6.3)							TRP*,KYN*, 3HK*,QA*,KA*
					29 0/29		58 0/58	32.2(5.4)							TRP*,KYN*, 3HK*,QA*,KA*
					29 0/29		58 0/58	33.02(4.6)							TRP*,KYN*, 3HK*,QA*,KA*
112	Wood, Harwood et al. 1978	UK	MDD	Healthy Control	10 10/0	14 14/0	24 24/0	55,9(15,2)	53,1(10,8)	KYN	Plasma	Flame photometry	4	15,5	KYN#
					17	16	33	59,6(9,7)	52,5(8,5)						KYN*

					0/17	0/16	0/33								
113	Wu, Mai et al. 2018a	China	MDD	Healthy Control	170 43/127	135 42/93	305 85/220	66,5(7,01)	66,9(6,7)	TRP, KYN, KA	Serum	LC-MS/MS	6,75	12,5	TRP*, KYN*, KA*
114	Wu, Zhong et al. 2018b	China	MDD	Healthy Control	85	129 38/91	214	66,3(7,3)	67,08(6,8)	TRP, KYN, KA	Serum	LC-MS/MS	5,75	14	TRP*, KYN*, KA*
					20/65		58/156	66,7(6,9)							TRP*, KYN*, KA*
					71 22/49	200 71/129									
115	Wurfel, Drevets et al. 2017	USA	MDD	Healthy Control	35	92 33/59	127	38,8(13,8)	32,3(10,4)	TRP, KYN, KA, 3HK, QA	Serum	HPLC-MS/MS	3,75	20	TRP*, KYN, KA*, 3HK*, QA#
			BD		53 16/37		145 49/96	40,2(11,0)							TRP*, KYN*, KA*, 3HK*, QA#
116	Xu, Fang et al. 2012	China	MDD	Healthy Control	26 7/19	25 9/16	51 16/35	32,3(8,8)	32,1(8,1)	TRP	Plasma	HPLC	7	9,5	TRP*
117	Chiu, Yang et al. 2021	Taiwan	MDD	Healthy Control	33 8/25	33 8/25	66 16/50	43,7(11,6)	43,3(11,3)	TRP, KYN	Plasma	ELISA	5,75	12,5	TRP*, KYN#
118	Yoshimi, Futamura et al. 2016	Sweden	BD	Healthy Control	54 54/0	39 39/0	93 93/0	41,7(15,2)	37,4(13,8)	TRP	Serum	CE-TOFMS	5	20	TRP*
119	Young, Drevets et al. 2016	USA	MDD	Healthy Control	54 54/0	39 39/0	93 93/0	41,7(15,2)	38,1(15,3)	TRP, KYN, KA, 3HK, QA	Serum	CE-TOFMS	8,75	9,5	TRP*, KYN, KA*, 3HK#, QA#
120	Zhou, Zheng et al. 2018	China	MDD	Healthy Control	84 39/45	60 35/25	144 74/70	35,0(12,1)	31,6(10,7)	TRP, KYN, KA	Serum	HPLC-MS/MS	5	12,5	TRP*, KYN*, KA*
121	Zhou, Zheng et al. 2019	China	MDD	Healthy Control	76	41	117	33,3(11,7)	28,8(9,7)	TRP, KYN, KA	Serum	HPLC-MS/MS	4,5	17,5	TRP*, KYN*, KA*
					76/0	41/0	117/0								
					70 0/70	31 0/31	101 0/101	35(12,4)	36,3(11,9)						TRP*, KYN#, KA*
29 USA	UK 10	China 8	8 Germany	7 Belgium	6 Japan	6 Netherlands	6 Italy	5 Austria	4 Ireland	3 Denemark	9 Sweden				

*: Indicates that patients have reduced level of the measured metabolite compared to healthy control

#: Indicates that patients have increased level of the measured metabolites compared to healthy control

TRP: Tryptophan, KYN: Kynurenine, KA: Kynurenic acid, 3HK: 3-Hydroxykynurenine, AA: Anthranilic acid, 3HA: 3-Hydroxyanthranilic acid, XA: Xanthurenic acid, QA: Quinolinic acid, PA: Picolinic acid, MDD: Major depressive disorder, BD: Bipolar disorder, MDD-M: Major depressive disorder with melancholia, DD: Dysthymic disorder, UD: Unipolar depression, HPLC: High performance liquid chromatography, HPLC-MS/MS: High performance liquid chromatography with tandem mass spectrometry, CE-TOFMS: Capillary Electrophoresis Time Of Flight Mass Spectrometer, LC-MS/MS: Liquid chromatography with tandem mass

spectrometry, UPLC-MS/MS: Ultra performance liquid chromatography with tandem mass spectrometry, LCECA: Liquid chromatography electrochemical array, XLC-MS/MS: Extraction-liquid chromatographic-tandem mass spectrometric, GCMS: Gas chromatography–mass spectrometry, LC: Liquid chromatography, HPLC-UV: High performance liquid chromatography- Ultra-violate

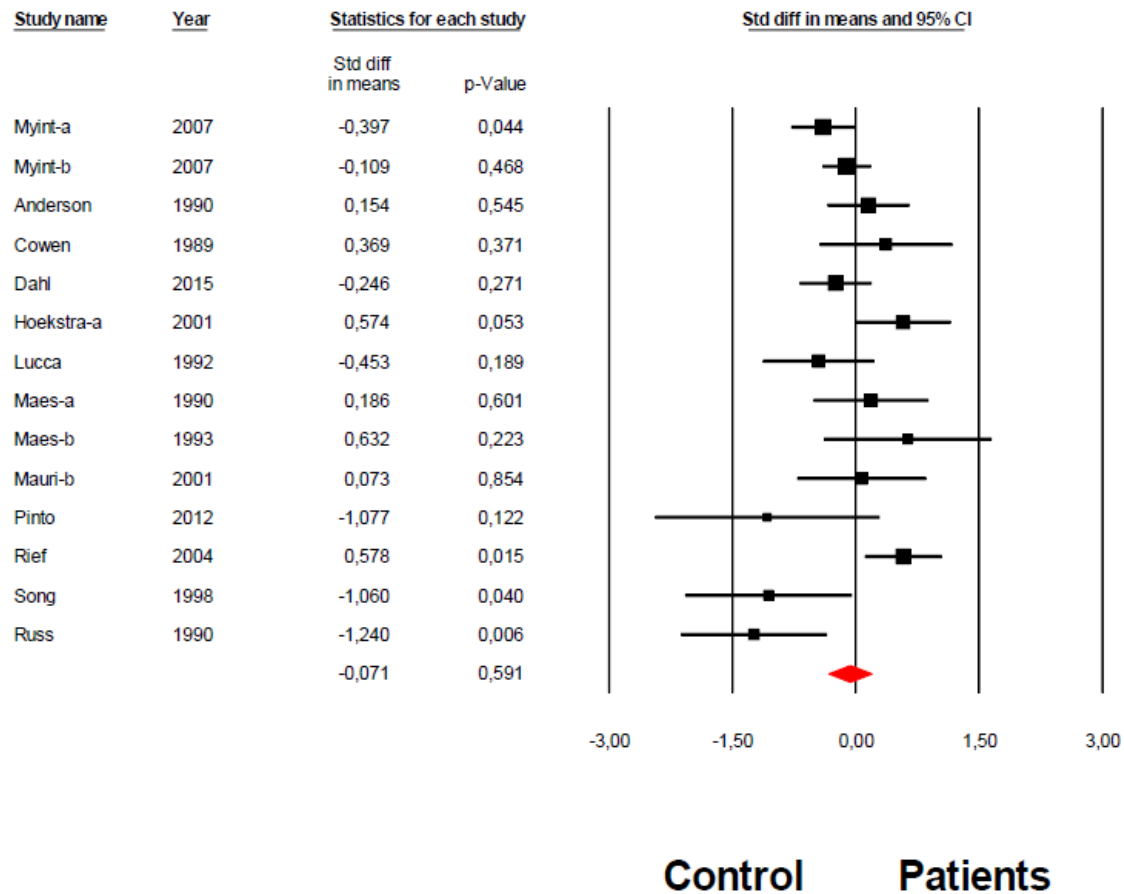
ESF. Table 6. Results of Meta-regression

Variables	No. of Studies	Covariates	1-sided p-value	Z-Value
TRP	80	Medication Free	0.006	-2.48
	104	Ogyu2018	0.011	2.26
		Ogawa2014	0.044	-1.70
	83	Sample size	0.032	1.84
	79	Male cases	0.047	1.67
TRP/CAAs	13	Total Cases	0.008	2.38
CAAs	14	Latitude	0.016	2.15
	10	Partially Free Medication	0.021	2.03
		Medication Free	0.019	2.06
(KYN+3HK+3HA+XA+QA+PA)	82	Bartoli-2021	0.002	-2.87
		Marx-2020	0.010	-2.31
		Plasma	0.001	-3.03
		Serum	0.027	-1.93
KA/KYN	69	ECT-Yes	0.043	-1.71

	67	Ogyu-2018	0.025	-1.96
		Marx-2020	0.033	-1.84
	41	Severity-Moderate	0.039	1.76
KA	32	Severity-Moderate	0.0012	3.04
	55	Ogyu-2018	0.013	-2.22
		Marx-2020	0.0004	-3.34
		Hebbrecht-2021	0.0061	-2.50
3HK	21	Age	0.012	2.24

TRP: Tryptophan, KYN: Kynurenine, KA: Kynurenic acid, 3HK: 3-Hydroxykynurenine, AA: Anthranilic acid, 3HA: 3-Hydroxyanthranilic acid, XA: Xanthurenic acid, QA: Quinolinic acid, PA: Picolinic acid, MDD: CAAs: Competing amino acids.

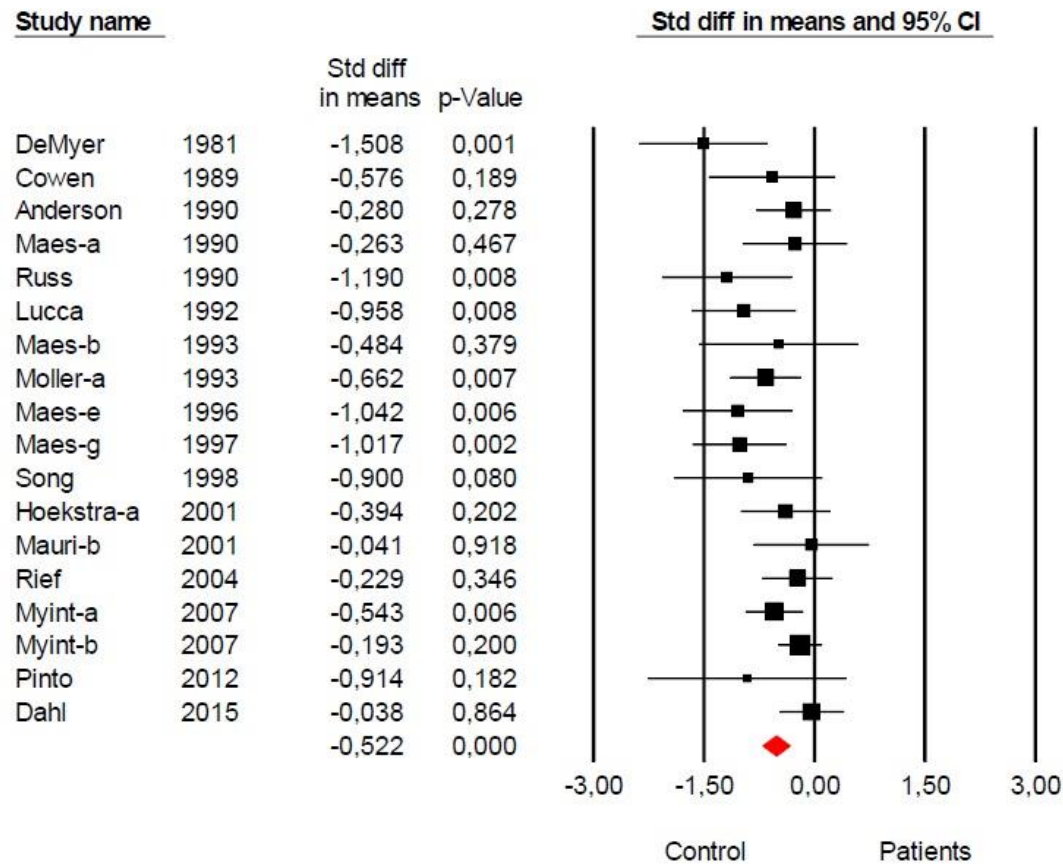
CAAs



Almulla et al, 2022

ESF, Figure 1. Forest plot of competing amino acids (CAAs) in the patients with affective disorders versus healthy control.

TRP/CAAs



Almulla et al, 2022

ESF, Figure 2. Forest plot of tryptophan (TRP)/competing amino acids (CAAs) in the patients with affective disorders versus healthy control.

Abbreviation:

TRP: Tryptophan

KYN: Kynurenine

KA: Kynurenic acid

3HK: 3-Hydroxykynurenine

AA: Anthranilic acid

3HA: 3-Hydroxyanthranilic acid

XA: Xanthurenic acid

QA: Quinolinic acid

PA: Picolinic acid

CAAs: Competing amino acids

IDO: Indoleamine 2,3 dioxygenase

TDO: Tryptophan 2,3 dioxygenase

KAT: Kynurenine aminotransferase

KMO: Kynurenine 3-monooxygenase

KYNU: Kynureninase

NAD⁺: Nicotinamide adenine dinucleotide

TRYCATs: Tryptophan Catabolites

TRYCAT pathway: Tryptophan catabolite pathway

SMD: Standardized mean difference

IL-6: Interleukin-6

IFN- γ : Interferon-gamma

O&NS: Oxidative and nitrosative stress

NAD: Nicotinamide adenine dinucleotide

MOOSE: Meta-Analyses of Observational Studies in Epidemiology

CSF: Cerebrospinal fluid

SD: Standard definition

IOR: Interquartile range

ICS: Immune confounder scale

CI: Confidence intervals

LC-MS: Liquid chromatography-mass spectrometry

LC-MS/MS: Liquid chromatography with two mass spectrometry

UHPLC-MS: Ultra-high-performance liquid-chromatography- mass spectrometry

LC-HRMS: Liquid chromatography-high-resolution mass spectrometry

LC-UV: Liquid chromatography-UV detection

NMDA: N-methyl-D-aspartate