

- 1 Supplementary Table 1. Clinical laboratory evaluations of SARS-CoV-2 infected patients 0-28
 2 days after infection.

Clinical Laboratory Tests	Mean (SE)		P-value
	Case	Control	

(1) Complete Blood Count (CBC)

1.1) White Blood Cells (WBC) count (Reference range: female $4.5-8.0 \times 10^3/\mu\text{L}$, male $4.5-9.0 \times 10^3/\mu\text{L}$)

Day 0 (Screening days)	5.24 (2.23)	5.15 (0.30)	0.8210
Day 4	5.14 (0.19)	6.45 (1.03)	0.0939
Day 7	7.17 (0.97)	6.15 (0.34)	0.4680
Day 10	5.84 (0.22)	7.00 (0.38)	<0.001
Day 28	6.45 (0.19)	6.68 (0.31)	0.5047

1.2) Red Blood Cell (RBC) count (Reference range: female $3.7-5.0 \times 10^6/\mu\text{L}$, male $4.0-5.7$)

Day 0 (Screening days)	4.86 (0.08)	4.88 (0.20)	0.8760
Day 4	4.80 (0.14)	5.05 (0.13)	0.2409
Day 7	4.89 (0.07)	5.08 (0.12)	0.1721
Day 10	4.79 (0.30)	5.06 (0.29)	0.1638
Day 28	4.56 (0.10)	4.67 (0.20)	0.5813

1.3) Haemoglobin (Hb) (Reference range: female $11.0-14.0 \text{ g/dL}$, male $12.0-15.0 \text{ g/dL}$)

Day 0 (Screening days)	13.13 (0.32)	13.56 (0.30)	0.3970
Day 4	13.51 (0.29)	13.73 (0.31)	0.6307
Day 7	13.31 (0.26)	13.61 (1.63)	0.4864

Clinical Laboratory Tests	Mean (SE)		P-value
	Case	Control	
Day 10	13.22 (0.30)	13.66 (0.29)	0.3354
Day 28	12.53 (0.24)	12.73 (0.26)	0.5968

1.4) Haematocrit (Hct) (Reference range: female 35.0-41.0 %, male 38.0-48.0 %)

Day 0 (Screening days)	40.04 (0.80)	40.96 (0.82)	0.4711
Day 4	40.42 (0.79)	41.33 (0.84)	0.4737
Day 7	39.84 (0.71)	41.08 (0.77)	0.2782
Day 10	46.72 (7.39)	40.81 (0.76)	0.5540
Day 15	39.54 (0.97)	40.21 (1.71)	0.7275
Day 22	40.80 (0.97)	37.35 (0.35)	0.1129
Day 28	38.24 (0.63)	38.57 (0.66)	0.7469

(2) Haematology Laboratory Normal Range (count.)

2.1) Platelet (Reference range: 100-400 x 10³/uL)

Day 0 (Screening days)	243.25 (10.76)	246.35 (10.58)	0.8553
Day 4	248.39 (12.75)	237.07 (10.85)	0.5725
Day 7	275.28 (11.72)	257.13 (11.81)	0.3313
Day 10	284.34 (11.59)	277.05 (16.51)	0.7140
Day 28	293.67 (9.89)	258.76 (12.82)	0.0406

(3) Differential WBC count

3.1) Neutrophil (Reference range: female 35-75 %, male 36-70 %)

Day 0 (Screening days)	56.21 (1.82)	54.87 (2.07)	0.6534
------------------------	--------------	--------------	--------

Clinical Laboratory Tests	Mean (SE)		P-value
	Case	Control	
Day 4	52.40 (1.30)	52.19 (1.41)	0.9213
Day 7	55.05 (1.46)	52.06 (2.24)	0.2520
Day 10	58.32 (1.62)	55.62 (2.19)	0.3233
Day 28	55.77 (0.82)	55.34 (1.76)	0.7990

3.2) Lymphocyte (Reference range: female 20-59 %, male 23-57 %)

Day 0 (Screening days)	32.62 (1.45)	35.17 (1.98)	0.3062
Day 4	36.63 (1.14)	37.69 (1.47)	0.5842
Day 7	34.75 (1.24)	38.56 (1.93)	0.0893
Day 10	31.20 (1.43)	35.14 (1.96)	0.1068
Day 28	33.29 (0.83)	33.89 (1.65)	0.7171

3.3) Monocyte (Reference range: 2-10 %)

Day 0 (Screening days)	8.61 (0.62)	8.10 (0.45)	0.5844
Day 4	7.67 (0.38)	6.93 (0.57)	0.2709
Day 7	7.26 (0.41)	6.20 (0.43)	0.1099
Day 10	7.11 (0.25)	5.72 (0.34)	<0.001
Day 28	7.25 (0.22)	6.48 (0.28)	0.038

3.4) Eosinophil (Reference range: 1-5 %)

Day 0 (Screening days)	1.86 (0.27)	1.45 (0.36)	0.3814
Day 4	2.55 (0.26)	2.61 (0.44)	0.8947
Day 7	2.34 (0.27)	2.38 (0.37)	0.9292
Day 10	2.62 (0.24)	2.97 (0.49)	0.4746

Clinical Laboratory Tests	Mean (SE)		P-value
	Case	Control	
Day 28	3.44 (0.33)	3.61 (0.45)	0.7614

3.5) Basophil (Reference range: 0-3 %)

Day 0 (Screening days)	0.27 (0.06)	0.22 (0.07)	0.6211
Day 4	0.29 (0.06)	0.28 (0.08)	0.9191
Day 7	0.39 (0.11)	0.91 (0.66)	0.2951
Day 10	0.46 (0.07)	0.38 (0.09)	0.4644
Day 28	0.54 (0.07)	0.51 (0.90)	0.8621

(4) Clinical Chemistry

4.1) Albumin (Reference range: 3.5-5.0 g/dL)

Day 0 (Screening days)	4.21 (0.07)	4.26 (0.06)	0.6233
Day 4	3.88 (0.09)	4.14 (0.51)	0.0500
Day 7	4.02 (0.04)	4.11 (0.04)	0.1578
Day 10	3.97 (0.04)	4.10 (0.06)	0.0633
Day 28	4.19 (0.04)	4.24 (0.05)	0.4728

4.2) BUN (Reference range: 6-20 mg/dL)

Day 0 (Screening days)	10.32 (0.43)	10.06 (0.44)	0.7147
Day 4	10.50 (0.28)	10.33 (0.35)	0.7208
Day 7	11.21 (0.42)	10.77 (0.50)	0.5205
Day 10	10.85 (0.46)	11.07 (0.59)	0.7719
Day 28	11.97 (0.51)	11.11 (0.69)	0.3332

Clinical Laboratory Tests	Mean (SE)		P-value
	Case	Control	

4.3) Alanine aminotransferase: ALT (SGPT) (Reference range: female 0-31 U/L, male 0-41 U/L)

Day 0 (Screening days)	25.89 (2.36)	27.48 (6.09)	0.7694
Day 4	27.28 (2.31)	24.76 (5.25)	0.6104
Day 7	31.10 (2.61)	24.63 (3.81)	0.1601
Day 10	36.06 (3.41)	24.55 (2.92)	0.0258
Day 28	40.02 (4.73)	31.63 (8.94)	0.3823

4.3) Aspartate aminotransferase: AST (SGOT) (Reference range: female 0-31 U/L, male 0-37 U/L)

Day 0 (Screening days)	28.33 (2.23)	27.87 (2.63)	0.9002
Day 4	26.70 (1.87)	23.76 (1.87)	0.3302
Day 7	28.65 (2.18)	22.33 (1.89)	0.0642
Day 10	28.22 (2.12)	22.62 (1.18)	0.0636
Day 28	26.64 (1.62)	24.98 (3.02)	0.5964

4.4) Alkaline phosphatase: ALP (Reference range: 35-129 U/L)

Day 0 (Screening days)	63.49 (2.43)	64.34 (7.46)	0.8910
Day 4	66.92 (2.23)	59.97 (3.05)	0.0746
Day 7	72.01 (3.34)	63.93 (3.36)	0.1304
Day 10	69.42 (2.82)	64.90 (4.25)	0.3614
Day 28	68.22 (2.29)	60.78 (3.74)	0.0798

4.5) Calcium (Reference range: 8.6-10 mg/dL)

Clinical Laboratory Tests	Mean (SE)		P-value
	Case	Control	
Day 0 (Screening days)	9.20 (0.05)	9.29 (0.08)	0.3417
Day 4	9.14 (0.04)	9.32 (0.72)	0.0301
Day 7	9.29 (0.05)	9.38 (0.08)	0.3333
Day 10	9.60 (0.29)	9.53 (0.09)	0.8684
Day 28	9.33 (0.05)	11.14 (1.70)	0.1303

4.6) Phosphorus (Reference range: 2.7-4.5 mg/dL)

Day 0 (Screening days)	3.44 (0.09)	3.24 (0.09)	0.1548
Day 4	3.55 (0.08)	3.58 (0.08)	0.8544
Day 7	3.58 (0.70)	3.60 (0.97)	0.9550
Day 10	4.62 (0.81)	3.80 (0.09)	0.4434
Day 28	3.43 (0.07)	3.52 (0.23)	0.6453

4.7) Potassium (Reference range: 3.5-5.1 mmol/L)

Day 0 (Screening days)	3.83 (0.08)	3.73 (0.04)	0.3766
Day 4	3.91 (0.09)	3.28 (0.05)	0.5162
Day 7	4.53 (0.65)	3.81 (0.06)	0.4358
Day 10	3.93 (0.05)	5.16 (1.28)	0.2022
Day 28	5.96 (2.26)	4.56 (0.84)	0.6737

4.8) Sodium (Reference range: 136-145 mmol/L)

Day 0 (Screening days)	136.24 (2.02)	138.16 (0.50)	0.5083
Day 4	137.97 (0.26)	138.23 (0.32)	0.5414
Day 7	136.77 (2.09)	138.77 (0.39)	0.5040

Clinical Laboratory Tests	Mean (SE)		P-value
	Case	Control	
Day 10	137.21 (2.44)	139.24 (0.49)	0.5385
Day 28	136.51 (2.68)	128.92 (6.57)	0.1786

4.9) Chloride (Reference range: 98-107 mmol/L)

Day 0 (Screening days)	101.92 (1.65)	102.94 (0.39)	0.6628
Day 4	103.25 (0.29)	99.17 (3.25)	0.0965
Day 7	103.57 (0.34)	104.23 (1.14)	0.4791
Day 10	102.54 (1.84)	102.93 (0.41)	0.8767
Day 28	103.3 (0.27)	100.91 (3.48)	0.3294

4.10) Uric acid (Reference range: female 2.4-5.7 mg/dL, male 3.4-7.0 mg/dL)

Day 0 (Screening days)	5.03 (0.18)	5.30 (0.29)	0.4071
Day 4	8.68 (0.18)	5.10 (0.22)	<0.001
Day 7	9.08 (0.25)	5.26 (0.31)	<0.001
Day 10	8.93 (0.29)	5.74 (0.35)	<0.001
Day 28	5.58 (0.18)	5.92 (0.46)	0.431

(5) Clinical Immunology Laboratory Normal Range (Cont.)

5.1) C-Reactive Protein (CRP) (Reference range: 0-1 ug/dL)

Day 0 (Screening days)	0.77 (0.14)	1.26 (0.47)	0.2080
Day 4	0.85 (0.19)	0.513 (0.19)	0.2714
Day 7	0.79 (0.16)	0.81 (0.23)	0.9576
Day 10	0.52 (0.11)	0.77 (0.26)	0.3099
Day 28	0.55 (0.13)	0.75 (0.20)	0.3880

Clinical Laboratory Tests	Mean (SE)		P-value
	Case	Control	

5.2) Procalcitonin (PCT) (*Reference range: 0- 0.5 ng/dL*)

Day 0 (Screening days)	0.46 (0.12)	0.56 (0.31)	0.7158
Day 4	0.47 (0.15)	0.61 (0.31)	0.6245
Day 7	0.52 (0.19)	0.33 (0.16)	0.5379
Day 10	0.34 (0.14)	0.36 (0.18)	0.9490
Day 28	0.59 (0.16)	0.49 (0.22)	0.7170

(6) Cardiovascular Lab

6.1) QT interval (*Reference range: female < 470 ms, male < 450 ms*)

Day 0 (Screening days)	378.32 (5.91)	379.63 (3.79)	0.8834
Day 14	427.45 (5.81)	401.68 (6.63)	<0.001
Day 28	392.60 (3.19)	378.72 (4.93)	<0.001

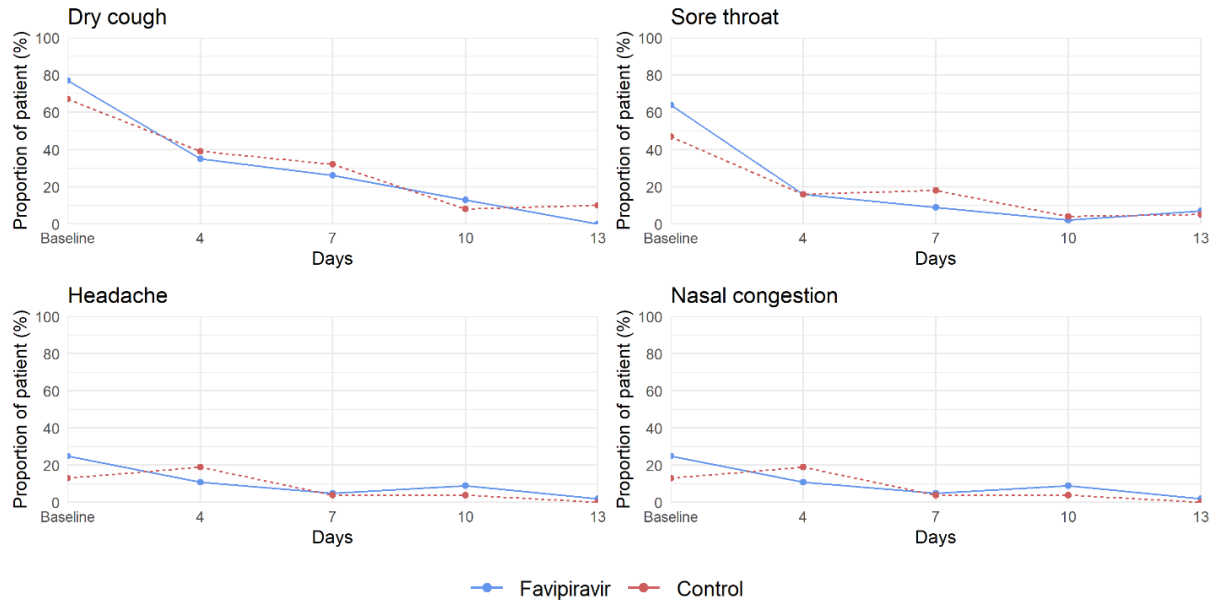
6.2) PR interval (*Reference range: 120-200 ms*)

Day 0 (Screening days)	156.66 (8.10)	144.07 (3.44)	0.2904
Day 14	153.49 (4.55)	147.89 (5.38)	0.4612
Day 28	152.68 (2.81)	149.17 (4.79)	0.5042

4 Supplementary Table 2. Prevalence of adverse events by group.

Adverse Event	Favipiravir (n=62) (%)	Control (n=31) (%)
Any AE (e.g., unspecified fever, upper respiratory tract infection, acute lymphadenitis right cervical, steroid acne, etc.)	10 (16.1)	2 (6.5)
Constipation	2 (3.2)	-
Diarrhoea	1 (1.6)	-
Dizziness	1 (1.6)	-
Dyspepsia	1 (1.6)	-
Insomnia	2 (3.2)	-
Rash	3 (4.8)	-
Hypertension	-	1 (3.2)
Hypertriglyceridemia	2 (3.2)	-
Hyperuricemia	11 (17.7)	1 (3.2)
Hypokalaemia	6 (9.7)	7 (22.6)
Hypoleukaemia	1 (1.6)	-
Increased CPK	-	1 (3.2)
Increased SGPT	1 (1.6)	-
Anaemia	2 (3.2)	-

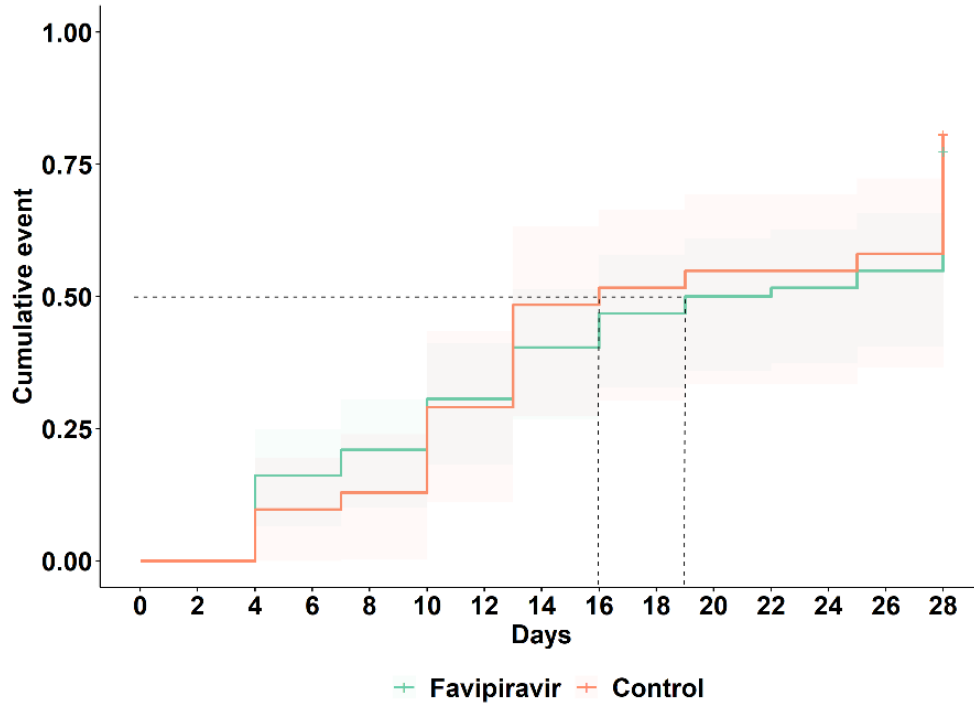
Adverse Event	Favipiravir (n=62) (%)	Control (n=31) (%)
Leukopenia	1 (1.6)	-
Hyperglycaemia	2 (3.2)	-



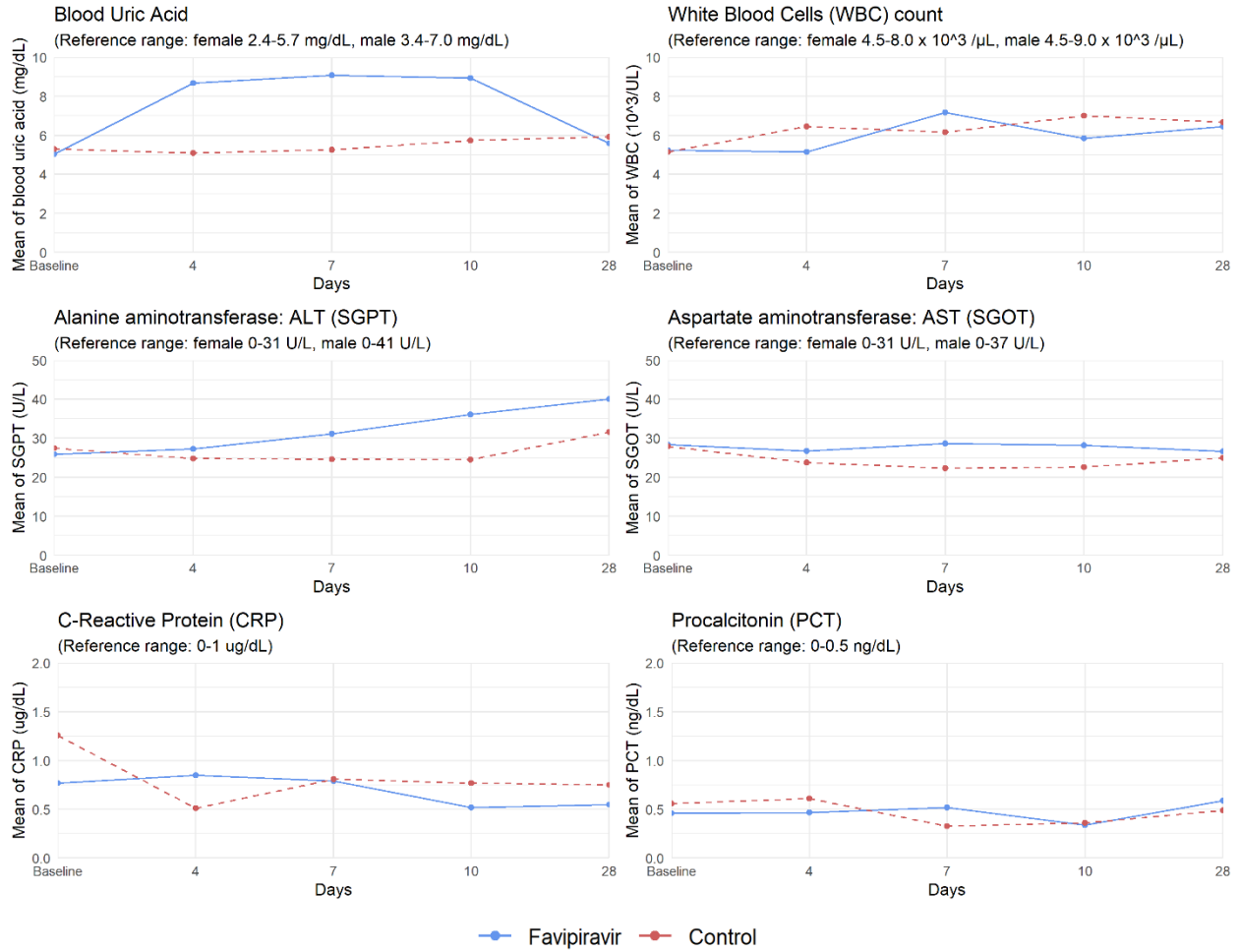
6

7 Supplementary Figure 1. Changes in clinical symptoms (dry cough, sore throat, headache, and
 8 nasal congestion) over 0-13 days. Line graphs illustrate the proportion of patients who had
 9 clinical symptoms each day after enrolment.

10



11
 12 Supplementary Figure 2. Time to undetectable virus over 28 days. The Kaplan-Meier curve
 13 illustrates the cumulative proportion of patients who had undetected viral titres over 28 days. The
 14 median time to undetected virus was 19 days vs 16 days (interquartile range (IQR) of 10-28 days
 15 for both) for FPV and control arms respectively (adjusted hazard ratio (aHR) 0.96, 95% CI: 0.58-
 16 1.58, $P = 0.871$).



17

18 Supplementary Figure 3. Clinical laboratory evaluations of blood uric acid, white blood cell
 19 (WBC) count, alanine aminotransferase (ALT), aspartate aminotransferase (AST), C-reactive
 20 protein (CRP), and procalcitonin (PCT). Line graphs illustrate the proportion of patients who had
 21 clinical symptoms from days 0-28.