

The Kynurenine pathway is upregulated in mild to moderate post-acute COVID-19 and uniquely associates with mild cognitive decline: a longitudinal study

Supplemental files

Table S1: Summary of Studies Objectively Assessing Cognitive Functioning Post-Acutely in COVID-19 Patients

Study	Sample	Design	Timeline	Measures	Main Findings
Alemanno et al., 2021 Italy	87 patients admitted to the COVID-19 Rehabilitation 4 groups according to the respiratory assistance in the acute phase: Group1 (orotracheal intubation), Group2 (non-invasive ventilation using Biphasic Positive Airway Pressure), Group3 (Venturi Masks), Group4 (no oxygen therapy) 62 Male, mean age 67.23 ± 12.89 years	Longitudinal	Follow-ups were performed at one month after home-discharge 56 patients (22 of Group 1, 12 of Group 2, 20 of Group 3 and 2 of Group 4)	MMSE, MoCA, Hamilton Rating Scale for Depression, and Functional Independence Measure (FIM)	MoCA scores showed that 74.2% Group 1, 94.4% Group 2, 89.6% Group 3 and 77.8% presented with deficits MMSE 12.9% Group 1 had mild to severe deficits; 55.6% Group 2 had mild to moderate deficits; 48.3% Group 3 had mild to severe deficits; and 44.4% had moderate deficits. Results were correlated with age At follow-up overall improvement on MoCA and MMSE, but many deficits remained. Group 1 is the least impaired.
Almeria et al. (2020) Spain	35 hospitalised patients, 54% female. 20% in ICU, 60% oxygen treatment, 20% neither ICU or oxygen treatment. Mean age 47.6 years (SD = 8.9 years) exclusion of subjects older than 60 or with psychiatric condition	Cross-sectional	10–35 days post hospital discharge	Visual Reproduction (Wechsler Memory Scale – IV), Verbal Learning via list learning, interference, and recognition	Patients requiring oxygen therapy during hospitalization: impairment in attention, working memory, processing speed, executive function, and global cognition; ICU treated patients: impaired executive dysfunction
Amalakanti et al. (2021) India	93 asymptomatic COVID-19 patients, 52.3% female, mean age 36.2 years (SD = 11.7 years). 102 healthy controls, 54.7% female, mean age 35.6 (SD = 9.8 years). All patients had less than four years of education	Cross-sectional	Unclear if measured post-acutely as details not provided	MoCA	Differences in overall MoCA scores between groups was negligible, although COVID-19 performed significantly lower in visuoperception, naming and fluency domains than that of controls.
Beaud et al. (2021) Switzerland	13 previous ICU patients in in-patient rehabilitation, 23% female. Mean age 64.8 years (SD = 7.6 years) patients still in hospital. Exclusion of patients with pre-existing psychiatric diseases, not controlling for age in FAB	Cross-sectional	Post-critical acute stage of severe COVID-19 (still in hospital)	MoCA, Frontal Assessment Battery (FAB)	Cognitive impairment in 69% (31% mild, 39% moderate to severe). More extensive impairment in executive, memory, attentional and visuospatial functions. 92% impaired in lexical fluency (FAB subtest)
Becker et al. (2021) United States	740 patients, 51% outpatients, 22% emergency department, 27% hospitalised. 63% female,	Cross-sectional	7.6 months (SD = 2.7) after SARS-CoV-2 diagnosis	Number Span Forward and backward, Trail Making Test Part A and B,	Deficits across domains: processing speed (18%), executive functioning (16%), phonemic fluency (15%),

Table S1: Summary of Studies Objectively Assessing Cognitive Functioning Post-Acutely in COVID-19 Patients

Study	Sample	Design	Timeline	Measures	Main Findings
	Mean age 49 years (SD = 14.2 years), education: 14% ≤12 years education, 86% > 12 years education			Phonemic and Category Fluency, Hopkins Verbal Learning Test-Revised. Did not account for mental health	category fluency (20%), memory encoding (24%), and memory recall (23%). Compared to outpatients, hospitalised patients were more likely to have attention, executive function, category fluency and memory impairments
Bungenberg et al. 2021 Germany	50 patients with persisting symptoms for at least 4 weeks were included and classified by initial hospitalization status: hospitalized (<i>n</i> = 21) and non-hospitalized (<i>n</i> = 29). Median Age 50.5 years (range 22–84 years), 56% female; median education: 15.5 (12.75–18)	Cross-sectional	Median time from SARS-CoV-2 detection to investigation was 29.3 weeks (range 3.3-57.9)	MoCA, version 7 Test of Attentional Performance (TAP), TMT A and B, Digit span forwards and backwards. Verbal fluencies, Stroop test variant (Farbe-Wort-Interferenztest, FWIT), Auditory Verbal Memory Test (VLMT), Rey Complex Figure copy and recall, Boston Naming Test	Mild deficits were found in attention, executive functions, and memory Hospitalized patients performed worse in global cognition, logical reasoning, and processes of verbal memory. In both groups, fatigue severity was associated with reduced performance in attention and psychomotor speed tasks and reduced quality of life and with more persisting symptoms.
De Lorenzo et al. (2020) Italy	185 patients, 34% female. 68% hospitalised, 32% discharged from emergency department. Mean age 57 years (SD = 10.4 years) Only patients with suspected pneumonia	Cross-sectional	3.3 weeks post-discharge from hospital or emergency department	MoCA Did not account for mental health	Cognitive impairment in 25%
Del Brutto et al. (2021 & 2022) Ecuador	2021: 52 non-hospitalised patients, 63% female. Mean age 62.6 years (SD=11 years). 41 healthy, demographically matched controls. Including non-hospitalised people aged 40+ years 2022: 78 participants, 50 with history of mild COVID-19 and 28 without	Longitudinal	First assessment: 2013-2015, Second Assessment: 2017-2019, Third Assessment: 6 months post-infection	MoCA – Spanish Version (Adjusted for demographics, cardiovascular risk factors, mental health, and education) Same	COVID-19 patients 18 times more likely to develop cognitive decline compared to healthy controls. 12% of patients declined cognitively after infection compared to 2% of healthy controls assessed on same timeline. Significant-likely age-related-decline in MoCA scores between the two prepandemic tests which did not differ between groups; at 6 months, only COVID-19 survivors showed significant decline, but reversed at 18-month
Frontera et al. (2022) USA	N=242 patients (median age 65, 64% male, 34% intubated during hospitalization) and	Longitudinal	6- to 12-months post infection	Modified Rankin Score, T-MoCA, Neuro-QoL	Those with neurological complications (N=113) had higher fatigue scores but other differences.

Table S1: Summary of Studies Objectively Assessing Cognitive Functioning Post-Acutely in COVID-19 Patients

Study	Sample	Design	Timeline	Measures	Main Findings
	N=174 completed both 6- and 12-month follow-up			Results adjusted for age, sex, race, pre-COVID Modified Ranking Score and intubation status	Significant improvements in outcome trajectories from 6- to 12-months were observed in T-MoCA scores (56% improved, median difference 1 point. and Neuro-QoL anxiety scores (45% improved). Non-significant improvements occurred in fatigue, sleep and depression.
Hampshire et al (2021) UK	N= 81,337	Cross-sectional	January and December 2020	Clinically validated web-optimized assessment (gbit.cognitron.co.uk), and questionnaire items capturing self-report of suspected and confirmed COVID-19 infection and respiratory symptoms	COVID+ showed significant cognitive deficits versus controls when controlling for age, gender, education level, income, racial-ethnic group, pre-existing medical disorders, tiredness, depression and anxiety, and pre-morbid level. Hospitalized worse than non-hospitalized and controls; non-hospitalized worse than controls
Hellgren et al. (2021). Sweden	35 hospitalised patients, 20% female. Median age 59 years (IQR: 51-66), 19 needed mechanical ventilation, 14 did not require ventilation. Only including those with concerning results on neuropsychological testing or suspected cognitive impairment	Cross-sectional	Neurocognitive testing: 5 months post-discharge (median 142 days); MRI: 7 months post-discharge (median 217 days).	Repeatable battery for the assessment of neuropsychological status (RBANS)	Cognitive impairment in 46%, of which 29% had severe impairment. Patients with abnormalities on MRI had a significantly ($p = .031$) lower visuospatial index compared to those with a normal MRI.
Jaywant et al. (2021) United States	57 previous ICU patients in in-patient rehabilitation, 25% female. Mean age 64.5 years (SD = 13.9 years) Only including patient with suspected cognitive impairment	Cross-sectional	2 months post hospital admission, still in in-patient rehabilitation	Age-normed Brief Memory and Executive Test (BMET)	Cognitive impairment in 81%, ranging from mild to severe. Common deficits in working memory (55%), set-shifting (47%), divided attention (46%), and processing speed (40%)
Liu et al., 2022 China	1438 COVID-19 survivors and 438 control individuals; <i>all aged 60+</i> ; COVID-19 was categorized as severe or nonsevere following the American Thoracic Society guidelines	Longitudinal	Follow-up at 6 and 12 months	Informant Questionnaire on Cognitive Decline in the Elderly and the Telephone Interview of Cognitive Status-40	The incidence of cognitive impairment in survivors 12 months after discharge was 12.45%. Individuals with severe cases had lower Telephone Interview of Cognitive Status-40 scores than those with nonsevere cases and control individuals at 12 months. Severe COVID-19 was associated with a higher risk of early-onset cognitive decline, late-onset

Table S1: Summary of Studies Objectively Assessing Cognitive Functioning Post-Acutely in COVID-19 Patients

Study	Sample	Design	Timeline	Measures	Main Findings
					cognitive decline and progressive cognitive decline while nonsevere COVID-19 was associated with a higher risk of early-onset cognitive decline (adjusted for age, sex, education level, body mass index, and comorbidities)
Mattioli et al. (2021) Italy	120 health care workers who had COVID-19 of mostly mild to moderate severity (2 patients required hospitalisation), 75% female, mean age 47.9 years, mean education 16 years. 30 (controls) health care workers who had not had COVID-19, 73.3% female, mean age 45.7 years, mean education 18 years.	Cross-sectional	Mean of 126 days from diagnosis (range of 12 to 215 days)	Controlled Oral Word Association (COWA), Rey figure copy and recall, California Verbal Learning Test (CVLT), TEA attention test, Tower of London test, MMSE, Depression anxiety and stress scale-21 (DASS-21)	Frequency of neurological deficits and cognitive impairment was negligible. COVID-19 patients were impaired on 1.6 tests on average, and this was not significantly different to those who did not have COVID-19. Anxiety, stress and depression was significantly more elevated in those with COVID-19 than those without COVID-19.
Mattioli et al. (2022) Italy	52 COVID+ cases treated in intensive care unit (ICU patients), 163 not hospitalized (non-ICU patients).	Cross-sectional	4 months after the diagnosis	Neurological exam and extensive cognitive evaluation, investigating general cognition, memory, verbal fluency, visuospatial abilities and executive functions	peripheral nervous system deficits in 2/163 (1.2%) of non-ICU and in 7/52 (13.5%) of the ICU cases; ICU patients performed significantly worse than non-ICU cases; unrelated to tested comorbid effects
Mazza et al. (2021) Italy	226 patients who initially presented to emergency department, 177 hospitalised, 49 discharged and treated at home. 34% female, mean age 58.5 years (SD = 12.8 years). Only subsample of 130 patients completed BACS. Exclusion of patients older than 70	Longitudinal	1 and 3 months after hospital discharge	Brief Assessment of Cognition in Schizophrenia (BACS) – age normed Demographics not provided for sample who completed BACS.	78% of sample had poor performances in at least one cognitive domain, with executive functions and psychomotor coordination impaired in 50% and 57% of the sample respectively at 3 month follow up. Self-reported psychopathology influenced cognition.
Miskowiak et al. (2021) Denmark	29 hospitalised patients, 41% female. 100 healthy age- and education-matched controls	Longitudinal (baseline results)	3-4 months post hospital discharge	Screen for Cognitive Impairment in Psychiatry - Danish Version (SCIP-D), and the Trail Making Test-Part B. Did not control for mental health	Cognitive impairment in 59%- 65% (depending on which cutoff was applied). Large effect size for verbal learning and executive functioning. Moderate impairment for working memory, verbal fluency and psychomotor speed

Table S1: Summary of Studies Objectively Assessing Cognitive Functioning Post-Acutely in COVID-19 Patients

Study	Sample	Design	Timeline	Measures	Main Findings
Raman et al. (2021) UK	58 hospitalised patients, 41% female. 95% mechanical ventilation, 36% ICU. Mean age 55.4 years (SD = 13.2 years). 30 uninfected controls, matched for age, sex, BMI and comorbidities	Longitudinal (baseline results)	2.3 months from disease-onset, (1.6 months post hospital discharge)	MoCA	Impairments in executive and visuospatial domains significantly more common in patients than controls (40% patients vs 16% controls), median MoCA scores in patients not significantly different from controls
Soldati et al. (2021) Brazil	23 ICU patients, 22% female. Median age 53.6 years (IQR ± 11.7) Only ICU patients with mechanical ventilation	Cross-sectional	3.3 months post hospital discharge	Telephone Interview of Cognitive Status (TICS) Did not control for mental health and education	13% met criteria for mild cognitive impairment, 61% of patients fell within normal limits on cognitive assessments, 26% had ambiguous result. No participants had severe cognitive dysfunction
Tomasoni et al. (2021) Italy	25 hospitalised patients with virological clearance Time of hospitalisation, disease severity and demographic information not specified	Cross-sectional	1 – 3 months after virological clearance	MMSE (adjusted for age and education years) Did not control for mental health	Cognitive impairment in 40%, ranging from mild to severe. 16% had ambiguous results
Woo et al. (2020) Germany	18 patients, 58% female. 61% hospitalised, 39% non-hospitalised, no ICU. Mean age 42.2 years (SD=14.3 years). 10 age-matched control. Controls not matched for sex	Cross-sectional	2.8 months post recovery	Modified Telephone Interview of Cognitive Status (TICS-M) Did not account for control for education.	Patients scored significantly lower on TICS-M compared to healthy controls, especially regarding short-term memory, attention, concentration and language. Neuropsychologic deficits were independent from hospitalization and disease severity.
Zhou et al. (2020) China	29 patients, 38% female. Median age 47 years (SD = 10.54 years). 29 age-, sex- and education-matched controls. Disease severity not reported Only patients with >9 years education. Excluded patient with a mental health disorder and left handedness	Cross-sectional	2-3 weeks post infection	iPad-based online neuropsychological tests, including the Trail Making Test (TMT), Sign Coding Test (SCT), Continuous Performance Test (CPT), and Digital Span Test (DST).	Mild cognitive impairments among patients, mainly affecting sustained attention. No significant difference between patient and healthy controls in TMT, SCT, or DST

Note. This tables features studies assessing adult patients with confirmed SARS-CoV-2 infection (according to World Health Organization (2021a) criteria), using objective cognitive assessments, censored 31st of March 2022. Methodology of this literature review included searching on PubMed Database and Google Scholar using the following keywords: neurocognitive functioning COVID-19, cognitive functioning COVID-19, SARS-CoV-2 cognition, and COVID-19 cognition. Included in literature review were papers with adult participants who had a confirmed diagnosis of COVID-19, journals written in English, and studies which used standardised and objective measures. Self-report measures were not included. IQR = Interquartile Range, SD = standard deviation, Montreal Cognitive Assessment (MoCA), Mini-Mental State Exam (MMSE).

References in alphabetical order

Alemanno, F., *et al.* COVID-19 cognitive deficits after respiratory assistance in the subacute phase: A COVID-rehabilitation unit experience. *PLoS One* **16**, e0246590 (2021).

Almeria, M., Cejudo, J.C., Sotoca, J., Deus, J. & Krupinski, J. Cognitive profile following COVID-19 infection: Clinical predictors leading to neuropsychological impairment. *Brain Behav Immun Health* **9**, 100163 (2020).

Amalakanti, S., Arepalli, K.V.R. & Jillella, J.P. Cognitive assessment in asymptomatic COVID-19 subjects. *Virusdisease* **32**, 146-149 (2021).

Beaud, V., *et al.* Pattern of cognitive deficits in severe COVID-19. *J Neurol Neurosurg Psychiatry* **92**, 567-568 (2021).

Becker, J.T., *et al.* Concurrent validity of a computer-based cognitive screening tool for use in adults with HIV disease. *AIDS Patient Care STDS* **25**, 351-357 (2011).

Bungenberg, J., *et al.* Long COVID-19: Objectifying most self-reported neurological symptoms. *Ann Clin Transl Neurol* **9**, 141-154 (2022).

De Lorenzo, R., *et al.* Residual clinical damage after COVID-19: A retrospective and prospective observational cohort study. *PLoS One* **15**, e0239570 (2020).

Del Brutto, O.H., *et al.* Cognitive decline among individuals with history of mild symptomatic SARS-CoV-2 infection: A longitudinal prospective study nested to a population cohort. *Eur J Neurol* **28**, 3245-3253 (2021).

Del Brutto, O.H., Rumbea, D.A., Recalde, B.Y. & Mera, R.M. Cognitive sequelae of long COVID may not be permanent: A prospective study. *Eur J Neurol* **29**, 1218-1221 (2022).

Frontera, J.A., *et al.* Trajectories of Neurologic Recovery 12 Months After Hospitalization for COVID-19: A Prospective Longitudinal Study. *Neurology* (2022).

Hampshire, A., *et al.* Cognitive deficits in people who have recovered from COVID-19. *EClinicalMedicine* **39**, 101044 (2021).

Hellgren, L., *et al.* Brain MRI and neuropsychological findings at long-term follow-up after COVID-19 hospitalisation: an observational cohort study. *BMJ Open* **11**, e055164 (2021).

Jaywant, A., Vanderlind, W.M., Boas, S.J. & Dickerman, A.L. Behavioral interventions in acute COVID-19 recovery: A new opportunity for integrated care. *Gen Hosp Psychiatry* **69**, 113-114 (2021).

Liu, Y.H., *et al.* One-Year Trajectory of Cognitive Changes in Older Survivors of COVID-19 in Wuhan, China: A Longitudinal Cohort Study. *JAMA Neurol* (2022).

Mattioli, F., *et al.* Neurological and cognitive sequelae of Covid-19: a four-month follow-up. *J Neurol* **268**, 4422-4428 (2021).

Mattioli, F., *et al.* Neurologic and cognitive sequelae after SARS-CoV2 infection: Different impairment for ICU patients. *J Neurol Sci* **432**, 120061 (2022).

Mazza, M.G., *et al.* Persistent psychopathology and neurocognitive impairment in COVID-19 survivors: Effect of inflammatory biomarkers at three-month follow-up. *Brain Behav Immun* **94**, 138-147 (2021).

Miskowiak, K.W., *et al.* Cognitive impairments four months after COVID-19 hospital discharge: Pattern, severity, and association with illness variables. *Eur Neuropsychopharmacol* **46**, 39-48 (2021).

Raman, B., *et al.* Medium-term effects of SARS-CoV-2 infection on multiple vital organs, exercise capacity, cognition, quality of life and mental health, post-hospital discharge. *EClinicalMedicine* **31**, 100683 (2021).

Soldati, A.B., *et al.* Telephone Screening of Cognitive Status (TICS) in severe COVID-19 patients: Utility in the era of social isolation. *eNeurologicalSci* **22**, 100322 (2021).

Tomasoni, D., *et al.* Anxiety and depression symptoms after virological clearance of COVID-19: A cross-sectional study in Milan, Italy. *J Med Virol* **93**, 1175-1179 (2021).

Woo, M.S., *et al.* Frequent neurocognitive deficits after recovery from mild COVID-19. *Brain Commun* **2**, fcaa205 (2020).

Zhou, H., *et al.* The landscape of cognitive function in recovered COVID-19 patients. *J Psychiatr Res* **129**, 98-102 (2020).

Table S2: KP metabolites and cytokine log-transformed values over time.

Biomarker	2-month post diagnosis	4-month post diagnosis	8-month post diagnosis	12-month post diagnosis	Lower limit of detection
n	126	126	114	84	
	M (SD)	M (SD)	M (SD)	M (SD)	
KP					
TRP	49.44 (10.43)	48.61 (10.53)	47.71 (7.06)	48.09 (11.33)	
√KYN	1.83 (0.86)	2.41 (0.82)	1.69 (0.58)	1.28 (0.29)	
Log 3HK	2.63 (1.86)	3.70 (1.62)	3.46 (1.45)	3.55 (1.14)	
Log AA	3.76 (0.58)	3.69 (0.85)	3.11 (1.10)	2.72 (0.59)	
Log 3HAA	4.89 (0.52)	5.09 (0.75)	5.02 (0.60)	5.17 (0.61)	
Log QUIN	6.30 (0.50)	6.49 (0.40)	6.46 (0.43)	6.03 (0.40)	
Log PIC	5.51 (0.38)	5.48 (0.38)	5.51 (0.34)	5.60 (0.56)	
Cytokines					
Log NFL	1.95 (0.74)	1.96 (0.77)	2.27 (0.73)	2.82 (1.20)	-1.93
Log GFAP	6.30 (1.77)	6.21 (1.67)	6.36 (1.86)	6.15 (2.04)	0.48
Log S100B	3.02 (0.57)	3.05 (0.78)	3.17 (0.84)	3.13 (1.46)	-0.08
Log GMCSF	-0.79 (3.44)	-0.13 (3.58)	0.03 (3.50)	-0.54 (3.70)	-4.61
Log IFN γ	-0.10 (1.20)	-0.13 (1.34)	-0.15 (1.14)	0.03 (1.16)	-3.00
Log IL1 β	3.16 (1.31)	3.08 (1.43)	3.17 (1.37)	3.32 (1.25)	0.00
Log IL1Ra	2.03 (0.98)	1.79 (1.10)	1.82 (1.03)	2.01 (0.92)	-0.69
Log IL2	-0.75 (1.86)	-0.88 (2.07)	-0.60 (1.90)	-0.41 (1.88)	-3.51
Log IL4	-2.43 (2.08)	-2.39 (2.17)	-2.57 (1.97)	-2.46 (2.14)	-3.91
Log IL5	1.05 (0.79)	0.86 (0.86)	0.94 (0.75)	0.97 (0.88)	-1.31
Log IL6	-0.42 (1.22)	-0.48 (1.31)	-0.46 (1.19)	-0.42 (1.00)	-3.91
Log IL8	2.00 (0.72)	1.82 (0.75)	1.85 (0.79)	1.83 (0.79)	-1.90
Log IL10	-1.32 (2.30)	-1.81 (2.26)	-1.70 (2.31)	-1.32 (2.36)	-3.91
Log IL12p40	4.44 (0.77)	4.25 (0.83)	4.23 (0.81)	4.48 (0.85)	1.85
Log IL12p70	-0.28 (2.00)	-0.34 (2.09)	-0.29 (1.83)	-0.17 (1.89)	-2.30
Log IL13	2.40 (2.02)	2.10 (2.26)	2.16 (2.10)	2.26 (2.16)	-1.14
Log TNF α	3.39 (0.71)	3.25 (0.74)	3.29 (0.62)	3.41 (0.60)	0.27
MCP-1	268.50 (102.56)	242.46 (87.66)	254.33 (93.76)	246.13 (89.82)	54.46
IFN- β	3.84 (1.15) *				
IFN- λ 1	3.00 (0.85) *				

KP values did not have a lower limit of detection. * n = 57, only measured at time 1.

Table S3. Effect on Cognition by biomarker and biomarker * time interaction

Biomarker	Random intercept	Main time effect	Main Biomarker effect	Interaction	-2LL	AICc
	B (SE) p	B (SE) p	B (SE) p	B (SE) p		
Log NFL	.173 (.028) <.001	-.034 (.013) .007	-.008 (.029) .773	.005 (.005) .355	450	460
Log GFAP	.14 (.029) <.001	-.021 (.019) .283	-.020 (.022) .362	-.001 (.003) .766	221	231
Log S100B	.174 (.028) <.001	-.025 (.016) .112	.022 (.032) .485	.001 (.005) .920	450	460
Log GMCSF	.172 (.028) <.001	-.023 (.004) <.001	-.020 (.009) .024	-.001 (.001) .592	410	420
Log IFN γ	.175 (.028) <.001	-.023 (.004) <.001	-.033 (.026) .198	-.006 (.003) .112	407	417
Log IL1 β	.172 (.028) <.001	-.013 (.012) .271	-.015 (.026) .574	-.003 (.003) .366	410	420
Log IL1Ra	.172 (.028) <.001	-.017 (.010) .080	.018 (.032) .583	-.003 (.005) .515	409	419
Log IL2	.173 (.028) <.001	-.024 (.004) <.001	-.015 (.017) .373	-.003 (.002) .244	411	421
Log IL4	.173 (.028) <.001	-.024 (.006) <.001	.001 (.017) .938	<.001 (.002) .943	413	423
Log IL5	.171 (.028) <.001	-.024 (.006) <.001	-.011 (.037) .775	.001 (.005) .806	409	419
Log IL6	.175 (.028) <.001	-.025 (.004) <.001	-.043 (.028) .132	-.005 (.004) .221	408	418
Log IL8	.172 (.028) <.001	-.019 (.011) .095	.015 (.045) .732	-.002 (.006) .713	409	419
Log IL10	.172 (.028) <.001	-.028 (.005) <.001	<.001 (.015) .997	-.003 (.002) .055	410	420
Log IL12p40	.17 (.028) <.001	-.018 (.023) .417	.071 (.042) .088	-.001 (.005) .815	407	417
Log IL12p70	.171 (.028) <.001	-.023 (.004) <.001	-.027 (.016) .103	<.001 (.002) .943	410	420
Log IL13	.172 (.028) <.001	-.020 (.006) .001	-.003 (.015) .859	-.001 (.002) .505	413	423
Log TNF α	.173 (.028) <.001	-.017 (.022) .458	-.005 (.049) .923	-.002 (.007) .770	409	419
MCP-1	.173 (.028) <.001	-.026 (.012) .028	.001 (<.001) .047	<.001 (<.001) .679	425	435

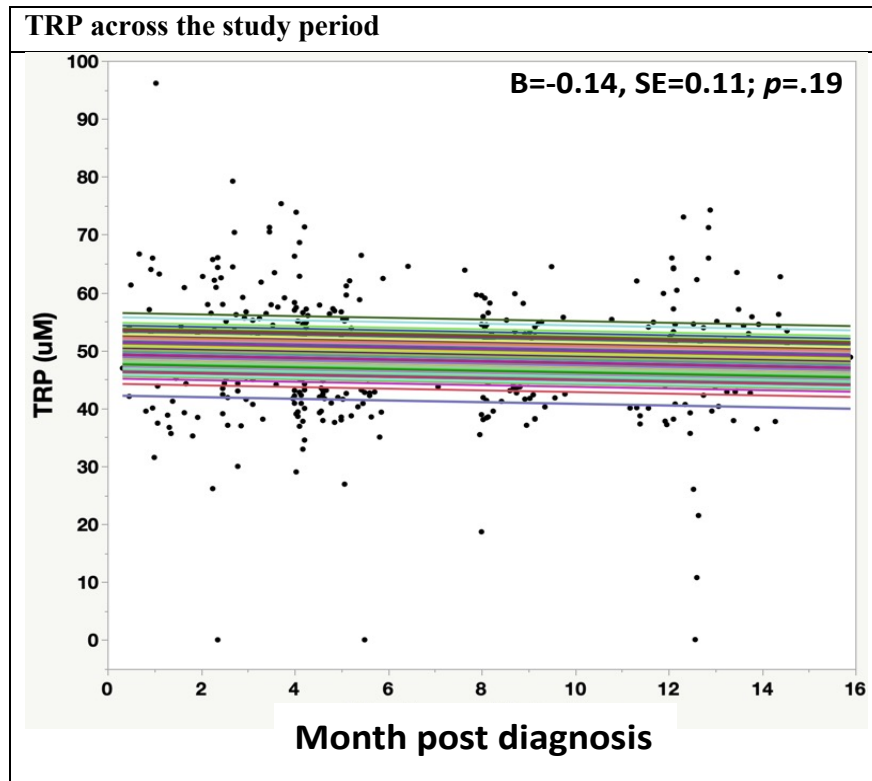
FDR across all fixed effects (time, main cytokine, and interaction): $p < 0.001$

Table S4. Effect on KP metabolites (KYN and QUIN) by biomarker and biomarker * time interaction

KP metabolite	Biomarker	Random intercept B (SE) p	Main time effect B (SE) p	Main biomarker effect B (SE) p	Interaction B (SE) p	-2LL	AICc	
√KYN	Log NFL	-	-0.77 (.018) <.001	.032 (.044) .474	-.004 (.008) .584	900	910	
	Log GFAP	-	-1.13 (.03) <.001	.015 (.025) .546	.003 (.005) .47	529	539	
	Log S100B	-	-0.68 (.025) .006	.007 (.043) .878	-.006 (.008) .449	899	909	
	Log GMCSF	-	-0.85 (.007) <.001	.031 (.009) .001	-.003 (.002) .107	892	902	
	Log IFN γ	-	-0.86 (.007) <.001	.008 (.026) .754	.007 (.005) .171	896	906	
	Log IL1 β	-	-1.09 (.018) <.001	.008 (.024) .741	-.007 (.005) .173	897	907	
	Log IL1Ra	-	-1.17 (.015) <.001	-.024 (.032) .461	.016 (.007) .021	893	903	
	Log IL2	-	-0.85 (.007) <.001	.009 (.017) .608	.001 (.004) .733	901	911	
	Log IL4	-	-0.81 (.01) <.001	-.001 (.016) .963	.002 (.003) .569	902	912	
	Log IL5	-	-1.01 (.01) <.001	-.031 (.039) .427	.016 (.008) .049	894	904	
	Log IL6	-	-0.86 (.007) <.001	.070 (.027) .009	-.003 (.006) .568	892	902	
	Log IL8	-	-1.03 (.018) <.001	-.037 (.043) .391	.009 (.009) .321	897	907	
	Log IL10	-	-0.81 (.008) <.001	.009 (.014) .540	.004 (.003) .130	896	906	
	Log IL12p40	-	-1.72 (.036) <.001	-.031 (.04) .438	.020 (.008) .016	892	902	
	Log IL12p70	-	-0.85 (.007) <.001	.003 (.016) .857	.003 (.003) .343	900	910	
	Log IL13	-	-0.97 (.01) <.001	.002 (.015) .908	.005 (.003) .138	898	908	
	Log TNF α	-	-1.41 (.031) <.001	-.008 (.045) .864	.016 (.009) .074	894	904	
	MCP-1	-	-1.26 (.018) <.001	-.001 (<.001) .051	<.001 (<.001) .018	912	922	
	Log QUIN	Log NFL	.044 (.011) <.001	-0.09 (.001) <.001	.024 (.026) .346	-.01 (.005) .066	534	559
		Log GFAP	.027 (.013) .042	-0.01 (.002) <.001	.008 (.016) .63	.002 (.003) .536	334	356
Log S100B		.039 (.011) <.001	-0.09 (.001) <.001	-.015 (.026) .575	-.007 (.005) .163	541	567	
Log GMCSF		.042 (.011) <.001	-0.09 (.001) <.001	.012 (.007) .067	<.001 (.001) .961	548	573	
Log IFN γ		.037 (.011) .001	-0.01 (.001) <.001	.039 (.019) .043	.002 (.004) .644	542	568	
Log IL1 β		.04 (.011) <.001	-0.09 (.001) <.001	.007 (.018) .709	-.004 (.004) .318	546	571	
Log IL1Ra		.038 (.011) <.001	-0.09 (.001) <.001	.026 (.023) .266	-.006 (.005) .215	543	568	
Log IL2		.039 (.011) <.001	-0.09 (.001) <.001	.014 (.012) .26	-.003 (.003) .283	546	571	
Log IL4		.039 (.011) <.001	-0.09 (.001) <.001	-.006 (.012) .631	-.001 (.002) .514	548	573	
Log IL5		.039 (.011) <.001	-0.09 (.001) <.001	.028 (.028) .317	-.002 (.006) .734	544	569	
Log IL6		.033 (.01) .001	-0.01 (.001) <.001	.079 (.019) <.001	-.008 (.004) .064	525	550	
Log IL8		.037 (.011) .001	-0.09 (.001) <.001	.048 (.031) .127	<.001 (.006) .98	542	568	
Log IL10		.039 (.011) <.001	-0.01 (.001) <.001	.017 (.01) .101	.002 (.002) .36	545	571	
Log IL12p40		.038 (.011) <.001	-0.09 (.001) <.001	.016 (.029) .582	.008 (.006) .173	543	568	
Log IL12p70		.039 (.011) <.001	-0.09 (.001) <.001	-.001 (.012) .918	<.001 (.002) .952	548	574	
Log IL13		.039 (.011) <.001	-0.09 (.001) <.001	.004 (.011) .724	.002 (.002) .448	548	573	
Log TNF α		.038 (.011) <.001	-0.01 (.001) <.001	.071 (.035) .043	.01 (.007) .146	539	564	
MCP-1		.04 (.011) <.001	-0.09 (.001) <.001	<.001 (<.001) .284	<.001 (<.001) .019	557	582	

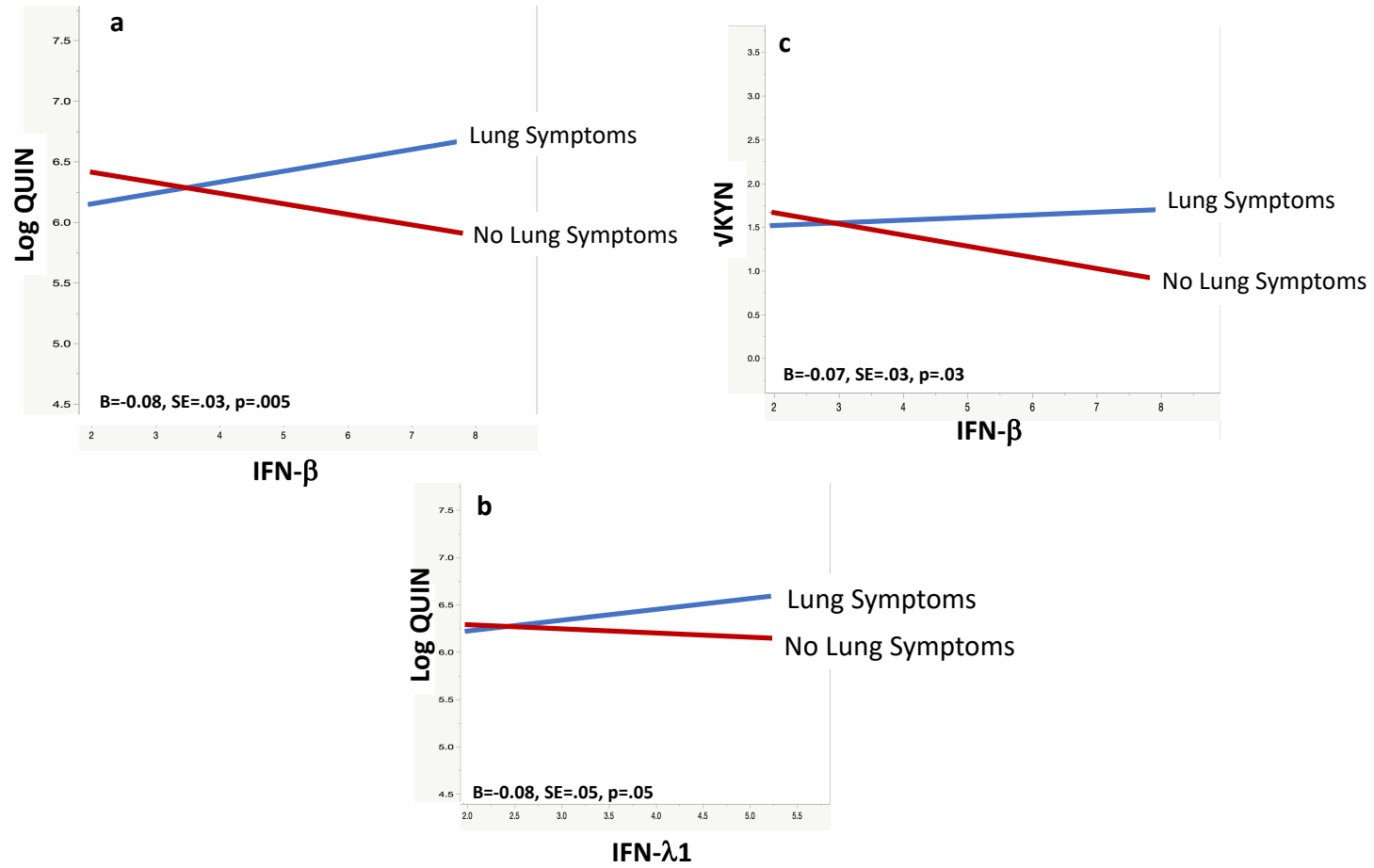
FDR across all fixed effects (time, main cytokine, and interaction): $p < 0.001$

Figure S2: Extra KP results



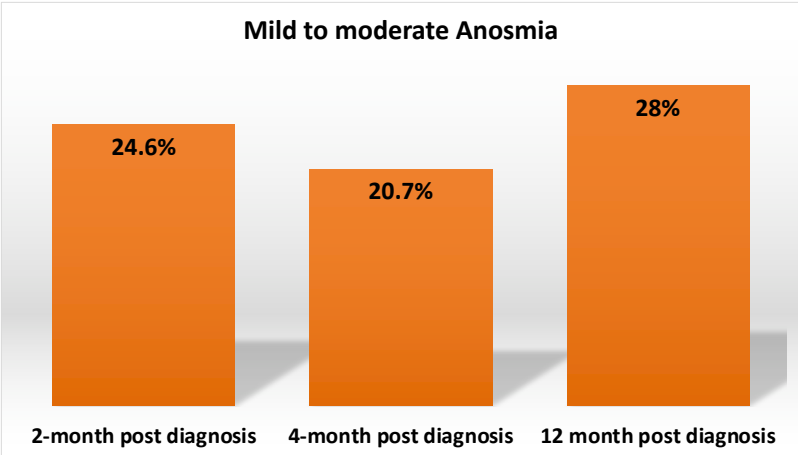
The KP profile and sex: We found a main effect of sex where men had higher Log AA compared to women ($B=0.18, SE=.087, p=.04$) overall, and with greater decrease across time compared to women ($B=-0.29, SE=.014, p=.04$; Model $-2LL=631, AICc=741$). Men also had higher Log PIC ($B=0.126, SE=.06, p=.04$; Model $-2LL=310, AICc=320$). Finally, men had higher Log QUIN compared to women ($B=0.181, SE=.058, p=.002$; Model $-2LL=369, AICc=379$). There was no sex effect for other metabolites.

Figure S3: KP and IFN



Sub-sample of 62 COVID-19 cases from the same cohort, with half with lung symptoms and half without no lung symptoms. Persistent lung symptoms are defined as persistent chest pain and dyspnoea at 2- and 4- month post diagnosis.

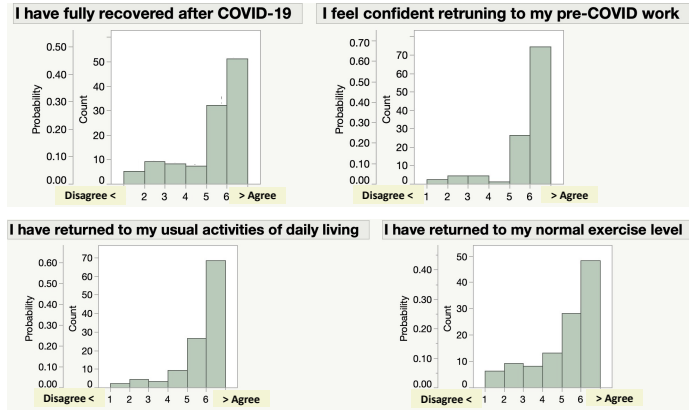
Figure S4: Mild to Moderate Anosmia across the study period



Anosmia was defined as T-score <40 on the NIH Toolbox Odor Identification Test

Figure S5: Functional status 2- and 4-month post diagnosis

2-month post diagnosis



4-month post diagnosis

