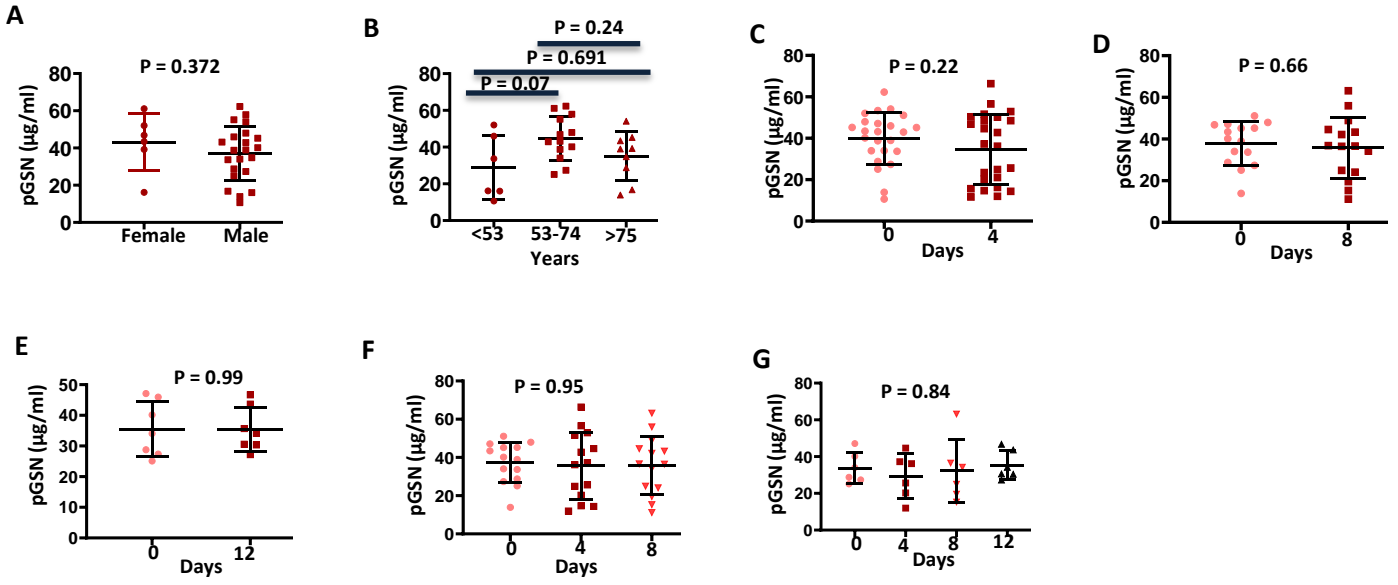
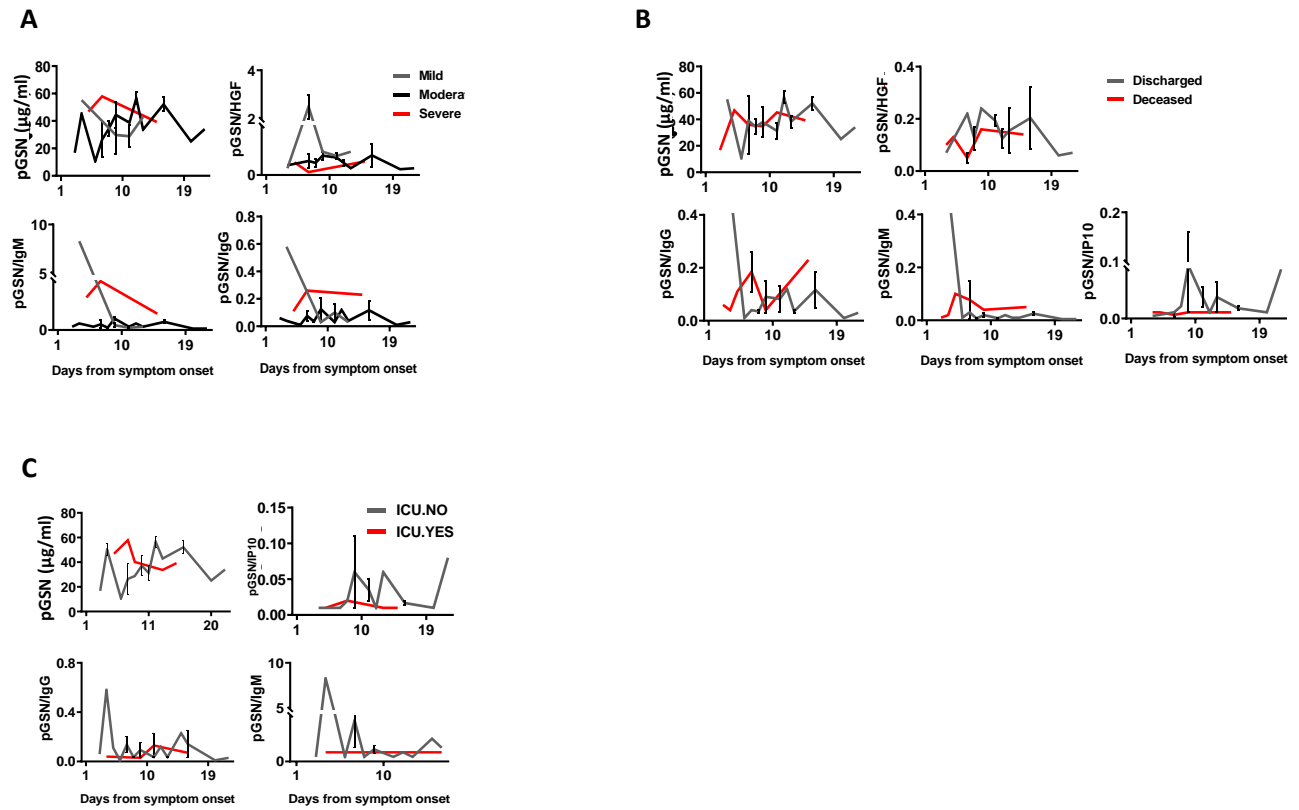


Supp. Fig. S1



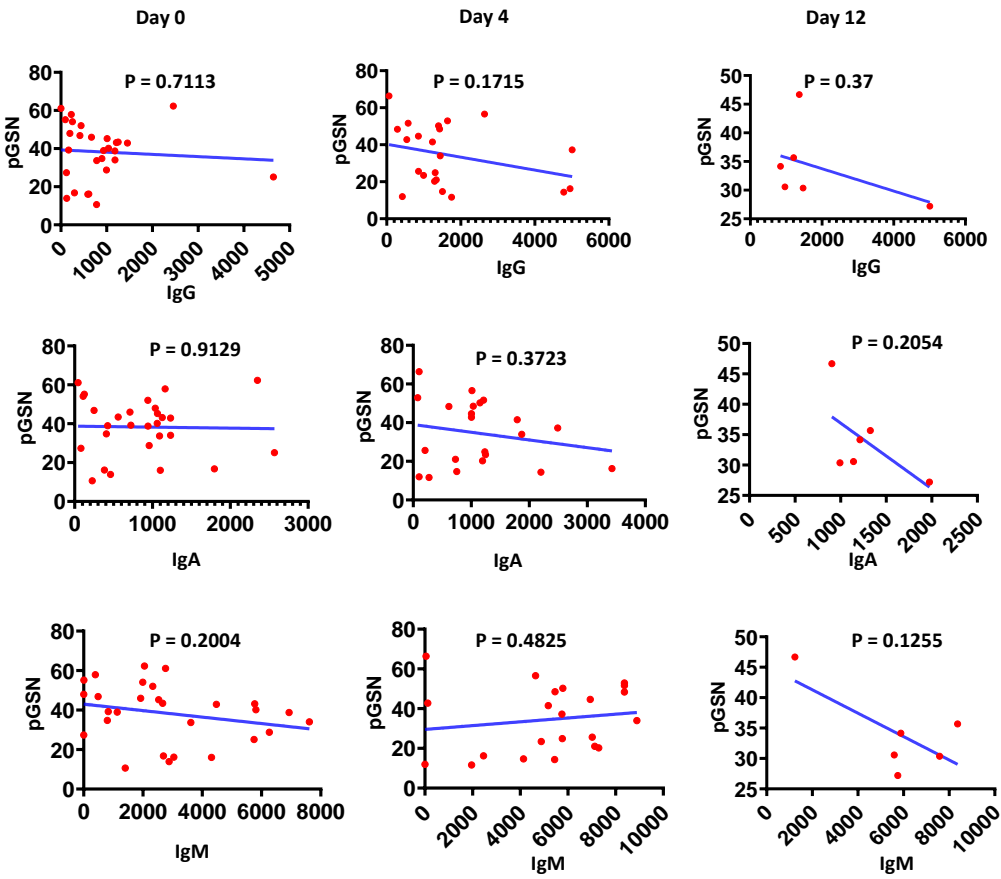
Supp. Fig. S1. pGSN levels are not affected by gender and age. The mean \pm SEM levels of pGSN were compared between (A) male and female COVID-19 patients as well as (B) age ranges. (C-G) The mean \pm SEM levels of pGSN were also compared between days of sample collection. *P*-values were calculated using one-way ANOVA and independent sample *t*-test.

Supp. Fig. S2



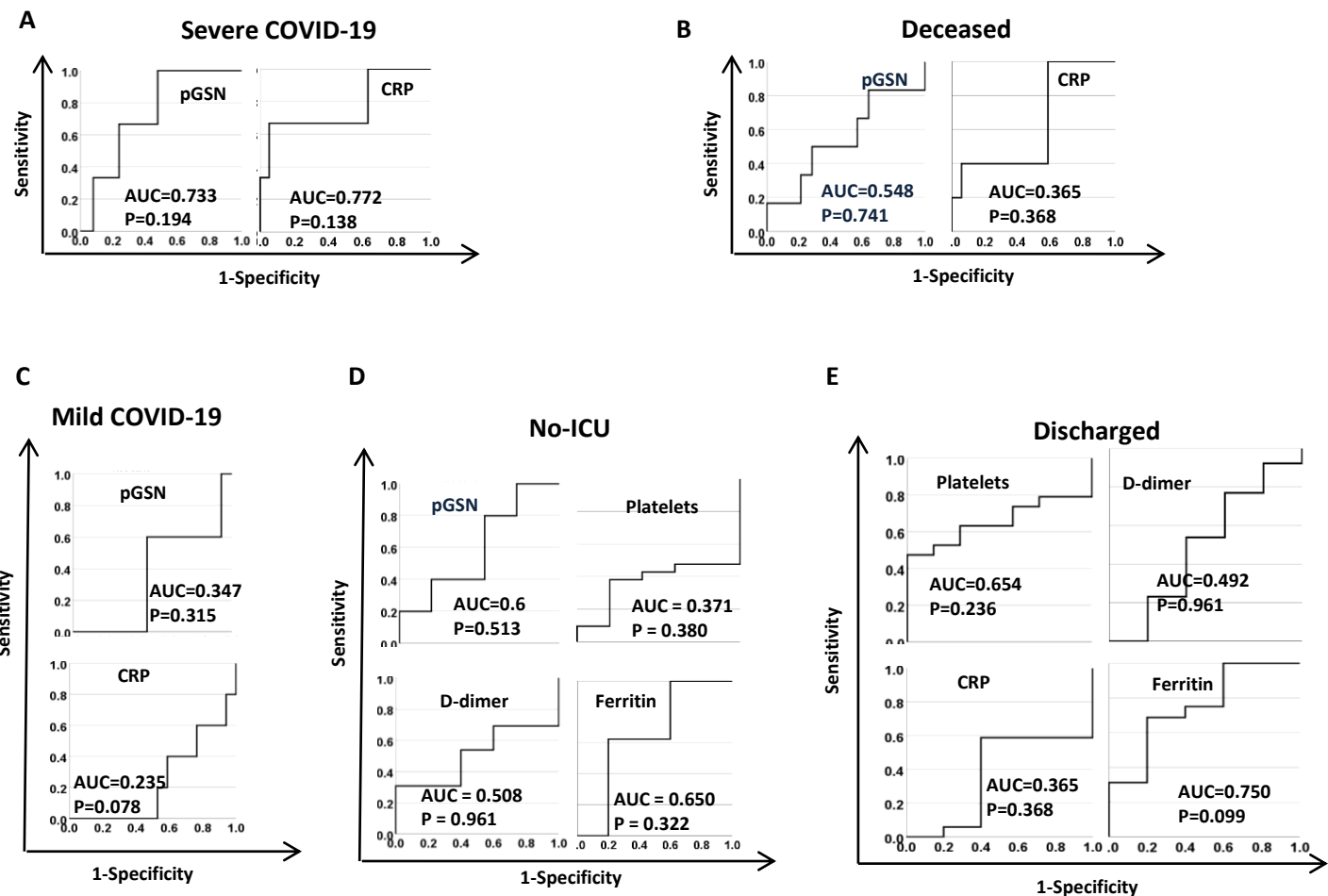
Supp. Fig. S2. pGSN multi-analyte panels for monitoring disease severity and outcomes days from symptoms onset. pGSN, pGSN/HGF, pGSN/IP-10, pGSN/IgM and pGSN/IgG were utilized to monitor (A) disease severity, (B) discharge and (C) ICU admittance following day 1 from symptoms onset. *P*-values were calculated by one-way ANOVA and independent sample *t*-test.

Supp. Fig. S3



Supp. Fig. S3. Correlation between pGSN and SARS-COV-2 antibodies. pGSN and SARS-COV-2 antibodies (IgG, IgM and IgA) were assessed on day 0, 4 and 12 and correlated using Pearson's test.

Supp. Fig. S4



Supp. Fig. S4. pGSN multi-analyte panels as predictors of COVID-19 outcomes. ROC curves were used to assess the test performances of pGSN, CRP, platelets, D-dimer and Ferritin in predicting (A) severe COVID-19, (B) deceased patients, (C) mild COVID-19 cases, (D) ICU admissions and (E) patients that are discharged.

Table 1: Demographics and Baseline Characteristics of COVID-19 Patients

		COVID-19		Non-COVID-19	
		Count	Mean	Count	Mean
Hospitalization outcomes at the end of follow-up	Deceased	7		0	
	Discharged	21		0	
BMI (Kg/m2)			30.51		
ICU Admittance	No	23		0	
	Yes	5		0	
Age (yrs)			63.93		41.67
Gender	Female	6		7	
	Male	22		5	
COVID Disease Severity	No infection	0		12	
	Mild	7		0	
	Moderate	18		0	
	Severe	3		0	
Days from first positive COVID-19 Test	2	2		0	
	3	7		0	
	4	4		0	
	5	1		0	
	6	1		0	
	7	4		0	
	8	1		0	
	9	2		0	
	11	1		0	
	13	1		0	
	14	1		0	
	15	1		0	
	17	1		0	
	20	1		0	
	3	1		0	
	Days from symptom onset	4	2		0
5		1		0	
6		1		0	
7		3		0	
8		2		0	
9		4		0	
11		4		0	
12		2		0	
13		2		0	
15		1		0	
16		3		0	
20		1		0	
22	1		0		

Disease severity was defined as follows:

1. Mild (no oxygen/room air received)
2. Moderate [supplemental oxygen, not high flow or no flow listed, no intubation/mechanical ventilation – ex. No Bi-level Positive Airway Pressure (BiPap) /intubation].
3. Severe (high flow oxygen and non-invasive or invasive mechanical ventilation – ex. Yes BiPap/intubation)