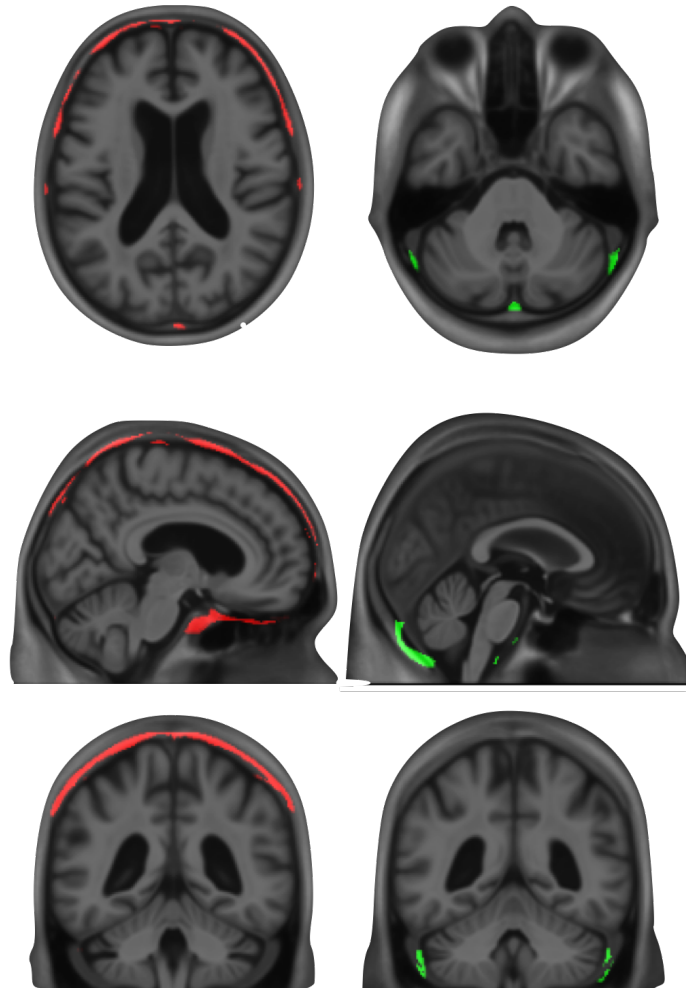


Supplementary material:

Supplementary figures:

Supplementary Figure 1: Probabilistic mask used to calculate telencephalon (red) and cerebellar (green) meningeal retention.

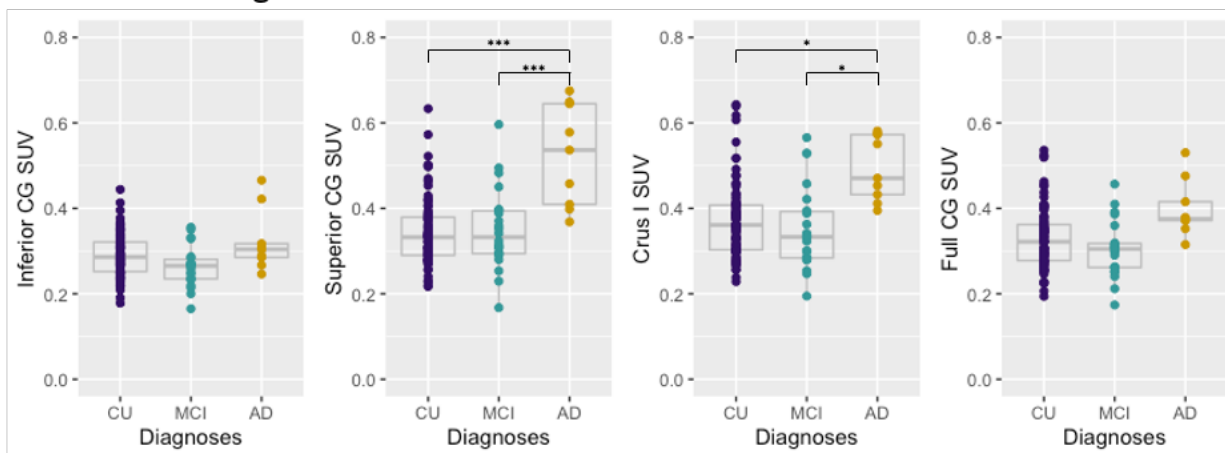
Telencephalon meninges Cerebellar meninges



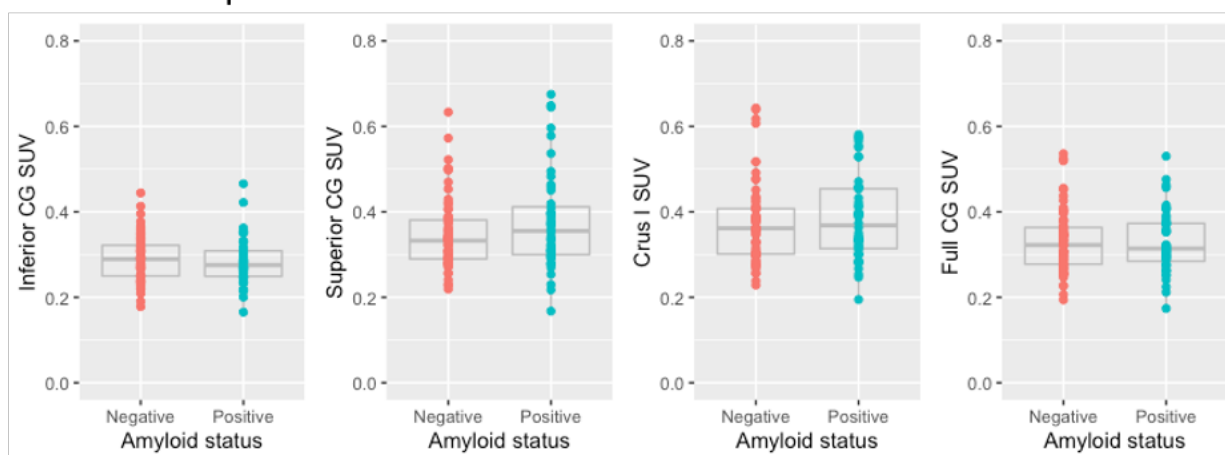
This mask was defined as region having >90% probability to present high retention in CU individuals.

Supplementary Figure 2: [¹⁸F]MK6240 SUV values across different cerebellar regions measured cross-sectionally.

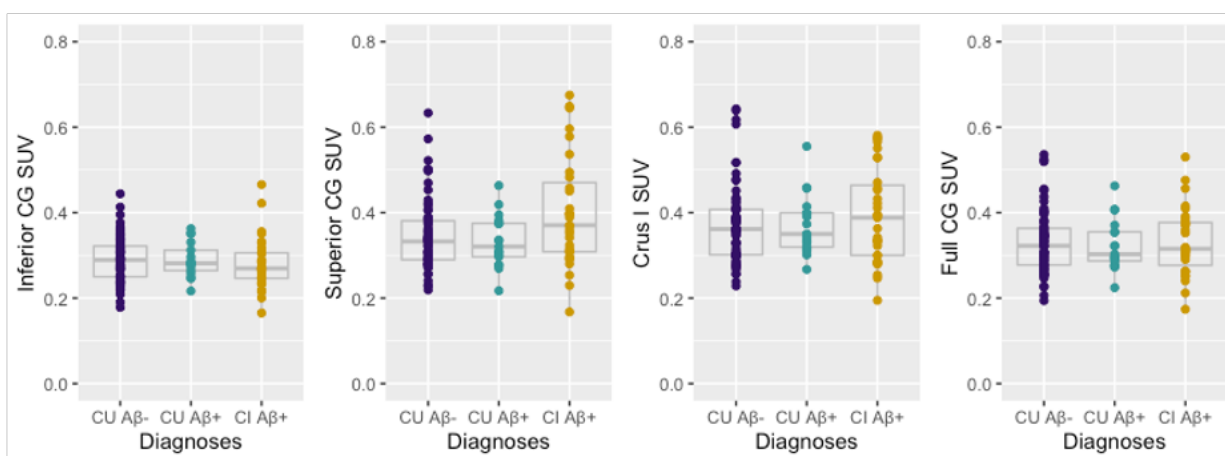
A: Based on diagnosis



B: Based on Aβ status



C: Based on diagnosis and Aβ status



Tissot *et al*

Title: The association of age-related and off-target retention with longitudinal quantification of [¹⁸F]MK6240 tau-PET in target regions.

Cross-sectional [¹⁸F]MK6240 SUV values did not demonstrate significant differences based on A) diagnosis, B) A β status C) diagnosis and A β status. *P*-values portrayed as *p*-value < 0.001=***, *p*-value < 0.5=*.

Supplementary Figure 3: Cross-sectional coefficient of variation of [¹⁸F]MK6240 SUV in cerebellar regions, measured at baseline or at follow-up visit.

