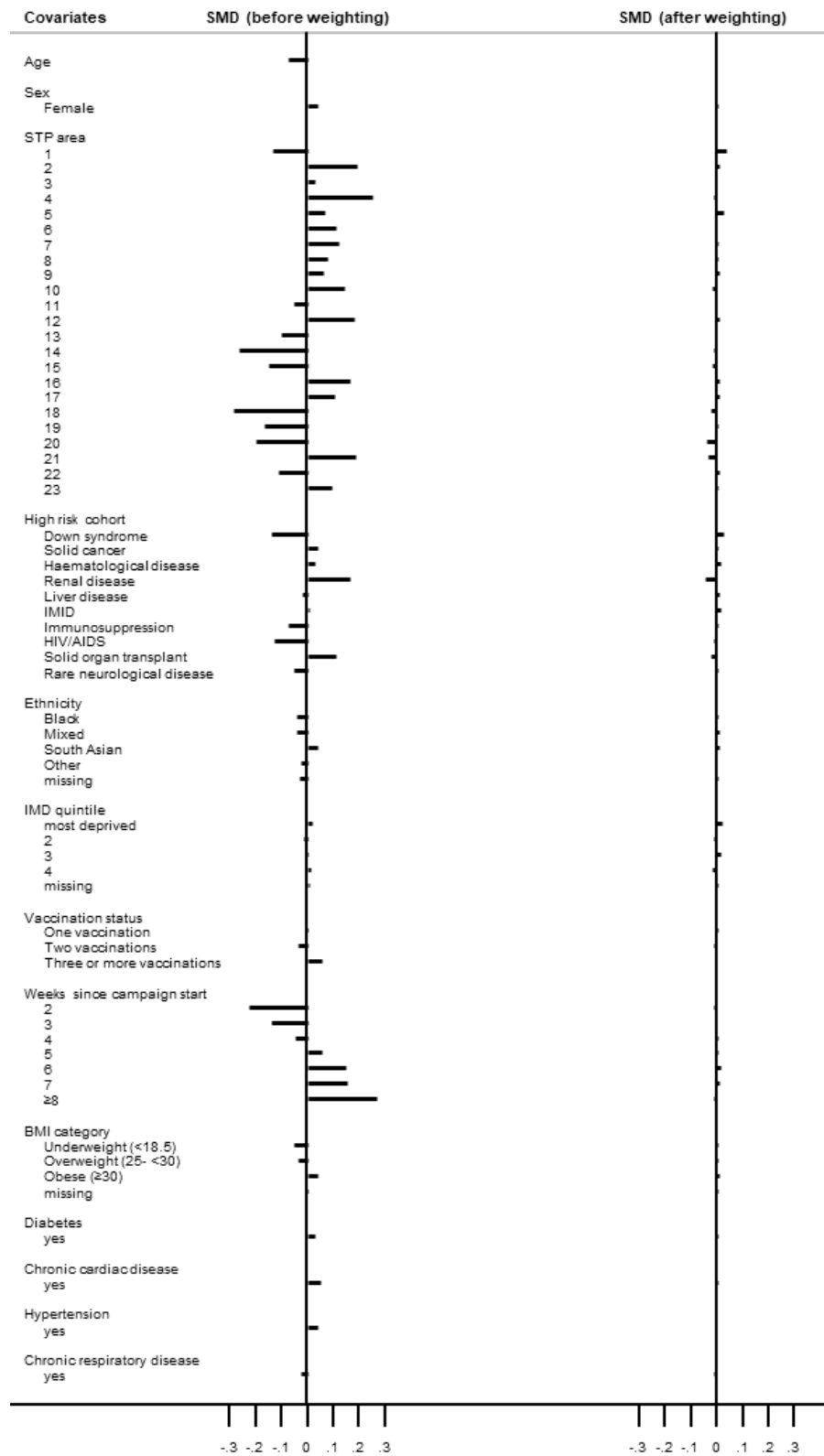


## Supplementary Materials

**Supplementary Table 1. Detected day case admissions that were not counted as hospitalisation events.**

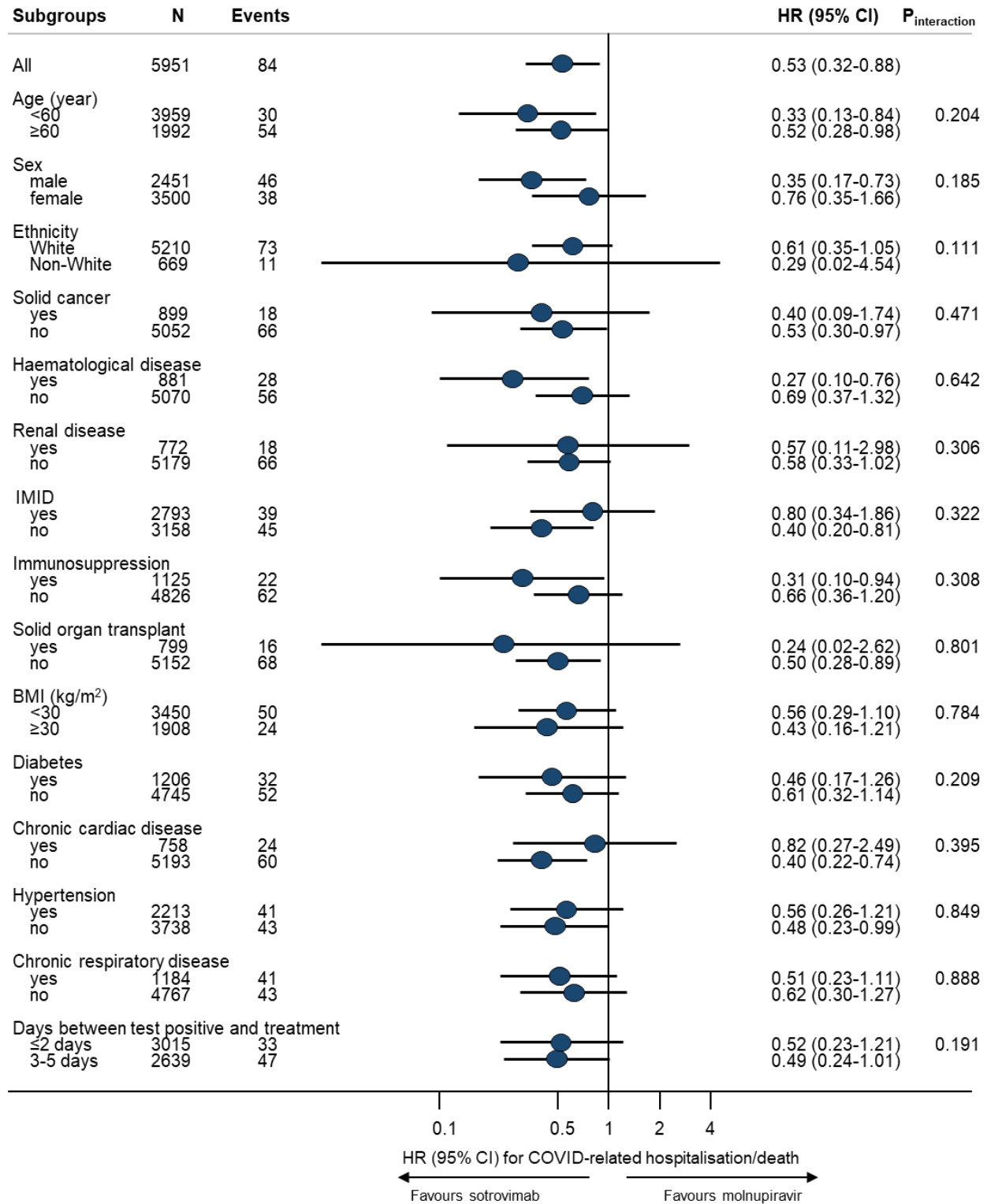
<b>Admissions of which the admission and discharge dates were the same</b>	<b>Number of events</b>	
	<b>Molnupiravir</b>	<b>Sotrovimab</b>
Detected day cases on Day 0 (i.e., the treatment start date)	46	294
Those with MAb procedure on Day 0	<10	268
Detected day cases on Day 1	<10	36
Those with MAb procedure on Day 1	<10	26
Detected day cases on or after Day 2	<10	<10
Those with MAb procedure on or after Day 2	<10	<10

Note: The following admissions were not counted as hospitalisation events: (1) those recorded as “elective day case admission” or “regular admission” in the patient classification filed of SUS dataset, because such coding clearly indicates that the patient was admitted for a planned procedure or regular treatment (thus cannot represent severe COVID-19 outcomes); or (2) day cases that we additionally detected with the admission and discharge dates being the same. As shown in this table, most of those additionally detected day case admissions were for monoclonal antibody infusion procedure (i.e., admitted for receiving sotrovimab). Monoclonal antibody procedures were identified based on OPCS codes (X891, X892).



**Supplementary Figure 1. Balance check of baseline covariates between treatment groups before and after propensity score weighting.**

Note: SMD=standardised mean difference; STP=Sustainability Transformation Partnerships; IMID=Immune-Mediated Inflammatory Diseases; IMD=Index of Multiple Deprivation; BMI=body mass index.



**Supplementary Figure 2. Subgroup analysis of sotrovimab vs. molnupiravir in association with risk of 28-day COVID-19 related hospitalisation/death.**

Note: HR=hazard ratio; CI=confidence interval; IMID=Immune-Mediated Inflammatory Diseases; BMI=body mass index. Subgroup analyses were based on the fully-adjusted stratified Cox model (Model 4). P for interaction between drug group and each of the following variables was: Down syndrome (0.209), liver disease (0.999), HIV/AIDS (0.999), rare neurological disease (0.999), vaccination status (0.525), respectively; no analyses within each level of these variables were done because of lack of sample size or outcome events within the subset of population.