

1  
2  
3  
4  
5  
6  
7  
8  
9  
10  
11  
12  
13  
14  
15  
16  
17  
18  
19  
20  
21  
22  
23  
24  
25  
26

## **InterMEL: An international biorepository and clinical database to uncover predictors of survival in early-stage melanoma**

Irene Orlow<sup>1\*</sup>, Keimya D. Sadeghi<sup>1^</sup>, Sharon N. Edmiston<sup>2,3^</sup>, Jessica M. Kenney<sup>1^</sup>, Cecilia Lezcano<sup>4^</sup>, James S. Wilmott<sup>5,6,7,8^</sup>, Anne E. Cust<sup>5,9,10^</sup>, Richard A. Scolyer<sup>5,6,7,8^</sup>, Graham J. Mann<sup>5,11,12^</sup>, Tim K. Lee<sup>13^</sup>, Hazel Burke<sup>5^</sup>, Valerie Jakrot<sup>5^</sup>, Ping Shang<sup>5^</sup>, Peter M. Ferguson<sup>5,14^</sup>, Tawny W. Boyce<sup>15^</sup>, Jennifer S. Ko<sup>17^</sup>, Peter Ngo<sup>18^</sup>, Pauline Funchain<sup>16^</sup>, Judy R. Rees<sup>19^</sup>, Kelli O’Connell<sup>1^</sup>, Honglin Hao<sup>2^</sup>, Eloise Parrish<sup>2,3^</sup>, Kathleen Conway<sup>2,3,20^</sup>, Paul B. Googe<sup>2^</sup>, David W. Ollila<sup>21^</sup>, Stergios J. Moschos<sup>22^</sup>, Eva Hernando<sup>23^</sup>, Douglas Hanniford<sup>23^</sup>, Diana Argibay<sup>23^</sup>, Christopher I. Amos<sup>24^</sup>, Jeffrey E. Lee<sup>25^</sup>, Iman Osman<sup>26,27,28^</sup>, Li Luo<sup>15^</sup>, Pei-Fen Kuan<sup>29^</sup>, Arshi Aurora<sup>1^</sup>, Bonnie E. Gould Rothberg<sup>30^</sup>, Marcus W. Bosenberg<sup>31,32,33,34^</sup>, Meg R. Gerstenblith<sup>35,36^</sup>, Cheryl Thompson<sup>37,38^</sup>, Paul N. Bogner<sup>39,40^</sup>, Ivan P. Gorlov<sup>24^</sup>, Sheri L. Holmen<sup>41,42,43^</sup>, Elise K. Brunsgaard<sup>42^</sup>, Yvonne M. Saenger<sup>44,45^</sup>, Ronglai Shen<sup>1^</sup>, Venkatraman Seshan<sup>1^</sup>, Eduardo Nagore<sup>46^</sup>, Marc S. Ernstoff<sup>47^</sup>, Klaus J. Busam<sup>4^</sup>, Colin B. Begg<sup>1^</sup>, Nancy E. Thomas<sup>2,3^</sup>, Marianne Berwick<sup>15^</sup> on behalf of the InterMEL Consortium<sup>^</sup>

<sup>1</sup>Department of Epidemiology and Biostatistics, Memorial Sloan Kettering Cancer Center, New York, New York, United States of America

<sup>2</sup>Department of Dermatology, School of Medicine, University of North Carolina at Chapel Hill, Chapel Hill, North Carolina, United States of America

27 <sup>3</sup>Lineberger Comprehensive Cancer Center, University of North Carolina at Chapel Hill, Chapel Hill, North  
28 Carolina, United States of America

29

30 <sup>4</sup>Department of Pathology and Laboratory Medicine, Memorial Sloan Kettering Cancer Center, New  
31 York, New York, United States of America

32

33 <sup>5</sup>Melanoma Institute Australia, The University of Sydney, Sydney, New South Wales, Australia

34

35 <sup>6</sup>Faculty of Medicine and Health, The University of Sydney, Sydney, New South Wales, Australia

36

37 <sup>7</sup>Tissue Pathology and Diagnostic Oncology, Royal Prince Alfred Hospital and NSW Health Pathology,  
38 Sydney, New South Wales, Australia

39

40 <sup>8</sup>Charles Perkins Centre, The University of Sydney, Sydney, New South Wales, Australia

41

42 <sup>9</sup>The Daffodil Centre, University of Sydney, a joint venture with Cancer Council New South Wales,  
43 Australia

44

45 <sup>10</sup>Sydney School of Public Health, The University of Sydney, Sydney, Australia

46

47 <sup>11</sup>Centre for Cancer Research, Westmead Institute for Medical Research, The University of Sydney,  
48 Westmead, New South Wales, Australia

49

50 <sup>12</sup>John Curtin School of Medical Research, Australian National University, Canberra, Australia

51

52 <sup>13</sup>British Columbia Cancer Research Center, Vancouver, British Columbia, Canada

53

54 <sup>14</sup>Tissue Pathology and Diagnostic Oncology, Royal Prince Alfred Hospital and New South Wales Health  
55 Pathology, Sydney, New South Wales, Australia

56

57 <sup>15</sup>Department of Internal Medicine, University of New Mexico Comprehensive Cancer Center,  
58 Albuquerque, New Mexico, United States of America

59

60 <sup>16</sup>Taussig Cancer Institute, Cleveland Clinic, Cleveland, Ohio, United States of America

61

62 <sup>17</sup>Department of Pathology, Cleveland Clinic, Cleveland, Ohio, United States of America

63

64 <sup>18</sup>Department of Hospital Medicine, Cleveland Clinic, Cleveland, Ohio, United States of America

65

66 <sup>19</sup>Department of Epidemiology, Geisel School of Medicine at Dartmouth, Hanover, New Hampshire,  
67 United States of America

68

69 <sup>20</sup>Department of Epidemiology, University of North Carolina at Chapel Hill, Chapel Hill, North Carolina,  
70 United States of America

71  
72 <sup>21</sup>Department of Surgery, Division of Surgical Oncology, University of North Carolina at Chapel Hill,  
73 Chapel Hill, North Carolina, United States of America  
74  
75 <sup>22</sup>Department of Medicine, Division of Medical Oncology, The University of North Carolina Lineberger  
76 Comprehensive Cancer Center, Chapel Hill, North Carolina, United States of America  
77  
78 <sup>23</sup>Department of Pathology, New York University Grossman School of Medicine, New York, New York,  
79 United States of America  
80  
81 <sup>24</sup>Department of Medicine, Baylor College of Medicine, Houston, Texas, United States of America  
82  
83 <sup>25</sup>Department of Surgical Oncology, University of Texas, MD Anderson Cancer Center, Houston, Texas,  
84 United States of America  
85  
86 <sup>26</sup> Department of Urology, New York University Grossman School of Medicine, New York, NY, United  
87 States of America  
88  
89 <sup>27</sup>Department of Medicine, New York University Grossman School of Medicine, New York, NY, United  
90 States of America  
91  
92 <sup>28</sup>Department of Dermatology, New York University Grossman School of Medicine, New York, NY, United  
93 States of America  
94  
95 <sup>29</sup>Department of Applied Mathematics and Statistics, Stony Brook University, Stony Brook, New York,  
96 United States of America  
97  
98 <sup>30</sup>Smilow Cancer Hospital, Yale-New Haven Health System, New Haven, Connecticut, United States of  
99 America  
100  
101 <sup>31</sup>Department of Internal Medicine, Section of Medical Oncology, Yale School of Medicine, New Haven,  
102 Connecticut, United States of America  
103  
104 <sup>32</sup>Department of Dermatology, Yale School of Medicine, New Haven, Connecticut, United States of  
105 America  
106  
107 <sup>33</sup>Department of Pathology, Yale School of Medicine, New Haven, Connecticut, United States of America  
108  
109 <sup>34</sup>Department of Immunobiology, Yale School of Medicine, New Haven, Connecticut, United States of  
110 America  
111  
112 <sup>35</sup>Department of Dermatology, University Hospitals Cleveland Medical Center/Case Western Reserve  
113 University School of Medicine, Cleveland, Ohio, United States of America  
114

115 <sup>36</sup>Department of Dermatology, Johns Hopkins University School of Medicine, Baltimore, Maryland,  
116 United States of America

117  
118 <sup>37</sup>Department of Nutrition, Case Western Reserve University, Cleveland, Ohio, United States of America  
119

120 <sup>38</sup>Department of Public Health Sciences, Penn State University College of Medicine, Hershey,  
121 Pennsylvania, United States of America

122  
123 <sup>39</sup>Department of Dermatology, Roswell Park Comprehensive Cancer Center, Buffalo, New York, United  
124 States of America

125  
126 <sup>40</sup>Department of Pathology, Roswell Park Comprehensive Cancer Center, Buffalo, New York, United  
127 States of America

128  
129 <sup>41</sup>Department of Oncological Sciences, University of Utah Health Sciences Center, Salt Lake City, Utah,  
130 United States of America

131  
132 <sup>42</sup>Huntsman Cancer Institute, University of Utah Health Sciences Center, Salt Lake City, Utah, United  
133 States of America

134  
135 <sup>43</sup>Department of Surgery, University of Utah Health Sciences Center, Salt Lake City, Utah, United States  
136 of America

137  
138 <sup>44</sup>Department of Medicine, Division of Hematology/Oncology, Columbia University Irving Medical  
139 Center, New York, New York, United States of America

140  
141 <sup>45</sup>Albert Einstein Cancer Center, Albert Einstein College of Medicine, Bronx, New York, United States of  
142 America

143  
144 <sup>46</sup>Department of Dermatology, Instituto Valenciano de Oncologia, Valencia, Spain

145  
146 <sup>47</sup>ImmunoOncology Branch, Developmental Therapeutics Program, Division of Cancer Treatment and  
147 Diagnosis, National Cancer Institute, Rockville, Maryland, United States of America

148

149 \* Corresponding author

150 E-mail: orlowi@MSKCC.ORG (IO)

151

152

153 ^ Membership of the InterMEL Consortium is provided in the Acknowledgements.

154 **Abstract**

155

156 **Introduction**

157

158 We are conducting a multicenter study to identify classifiers predictive of disease-specific survival in  
159 patients with primary melanomas. Here we delineate the unique aspects, challenges, and best practices  
160 for optimizing a study of generally small-sized pigmented tumor samples including primary melanomas of  
161 at least 1.05mm from AJTCC TNM stage IIA-IIID patients. This ongoing study will target 1,000 melanomas  
162 within the international *InterMEL* consortium. We also evaluated tissue-derived predictors of extracted  
163 nucleic acids' quality and success in downstream testing.

164

165 **Methods**

166

167 Following a pre-established protocol, participating centers ship formalin-fixed paraffin embedded (FFPE)  
168 tissue sections to Memorial Sloan Kettering Cancer Center for the centralized handling, dermatopathology  
169 review and histology-guided coextraction of RNA and DNA. Samples are distributed for evaluation of  
170 somatic mutations using next gen sequencing (NGS) with the MSK-IMPACT™ assay, methylation-profiling  
171 (array), and miRNA expression (Nanostring nCounter).

172

173 **Results**

174

175 Sufficient material was obtained for screening of miRNA expression in 683/685 (99%) eligible melanomas,  
176 methylation in 467 (68%), and somatic mutations in 560 (82%). In 446/685 (65%) cases, aliquots of  
177 RNA/DNA were sufficient for testing with all three platforms. Among samples evaluated by the time of  
178 this analysis, the mean NGS coverage was 249x, 59 (18.6%) samples had coverage below 100x, and 41/414  
179 (10%) failed methylation QC due to low intensity probes or insufficient Meta-Mixed Interquartile (BMIQ)-  
180 and single sample (ss)- Noob normalizations. Six of 683 RNAs (1%) failed Nanostring QC due to the low  
181 proportion of probes above the minimum threshold. Age of the FFPE tissue blocks ( $p<0.001$ ) and time  
182 elapsed from sectioning to co-extraction ( $p=0.002$ ) were associated with methylation screening failures.  
183 Melanin reduced the ability to amplify fragments of 200bp or greater (absent/lightly pigmented vs heavily  
184 pigmented,  $p<0.003$ ). Conversely, heavily pigmented tumors rendered greater amounts of RNA ( $p<0.001$ ),  
185 and of RNA above 200 nucleotides ( $p<0.001$ ).

186

187 **Conclusion**

188

189 Our experience with many archival tissues demonstrates that with careful management of tissue  
190 processing and quality control it is possible to conduct multi-omic studies in a complex multi-institutional  
191 setting for investigations involving minute quantities of FFPE tumors, as in studies of early-stage  
192 melanoma.

193

194

195

196

197

198

## 199 Introduction

200 Melanoma accounts for the great majority of deaths from skin cancer with an estimated 7,650 deaths in  
201 the USA in 2022 (1). The five-year survival rate of melanoma ranges from 98% for localized disease to less  
202 than 30% in patients with distant metastases at the time of diagnosis (2, 3). Factors known to affect  
203 progression and survival include primary tumor characteristics (4, 5), presence of nodal or distant  
204 metastases at the time of diagnosis (6), anatomic site of the tumor (7), as well as demographic  
205 characteristics such as age at diagnosis (8, 9) and sex (9); however, the prediction of individual outcomes  
206 based on clinicopathologic factors has limited power. The addition of molecular characteristics has the  
207 potential to improve risk classification and help identify individuals more likely to benefit from a  
208 differential surveillance schedule and/or therapies.

209 To date, the most comprehensive efforts undertaken to reveal the multifaceted molecular  
210 characteristics of cutaneous melanoma were reported by The Cancer Genome Atlas (TCGA) (10). These  
211 investigations led to the classification of melanomas into four subtypes based on somatic *BRAF*, *RAS*, and  
212 *NF1* mutations, and the identification of phenotypic characteristics (i.e., tumor infiltrating lymphocytes  
213 and LCK protein expression) linked to improved survival. The number of primary melanomas in TCGA,  
214 however, was small ( $n \sim 67$ ) and the thickness of these tumors was larger than the vast majority of primary  
215 melanomas, which are usually very thin at diagnosis. Thus, findings may not be generalizable. To be able  
216 to translate research findings into the real clinical and diagnostic practice, it is necessary to utilize  
217 melanoma tissue that remains available once histopathologic diagnosis is completed as part of the  
218 standard care. Therefore, for findings to be generalizable, investigations need to focus on the use of  
219 limited archival tissue from small melanomas.

220 In this article we describe our experiences organizing the tissue collection and processing of  
221 specimens that are being collected by the multi-institutional InterMEL Consortium (11), a study designed

222 to define molecular subtypes of cutaneous primary melanoma of at least 1.05 mm in patients diagnosed  
223 with AJCC TNM stages IIA through IIID melanoma to improve the prognostic stratification, to guide  
224 enhanced surveillance, and/or the use of adjuvant therapies for early intervention, as necessary.

225 The use of targeted and immuno-based therapies for stage III melanoma patients has been shown  
226 to be effective in improving recurrence-free survival (12). Also, pembrolizumab has just received FDA  
227 approval as adjuvant treatment for stage IIB/C melanoma based on its significant efficacy compared to  
228 placebo in preventing both locoregional and distant recurrence in a double-blind clinical trial (13).  
229 Therefore, it is pertinent and timely to better identify which patients are at highest risk who would most  
230 likely benefit from these treatments and which patients are at lower risk who should be spared of  
231 unnecessary, potentially toxic, and costly treatments (14).

232 The InterMEL Consortium is collecting clinical and pathologic data, as well as archived melanoma  
233 tissues, to screen for somatic mutations and evaluate miRNA and mRNA expression, methylation, protein  
234 expression, and to then correlate these features with survival. A uniquely challenging aspect of the current  
235 study is the use of archived primary melanomas, which are typically of limited size. To address this concern  
236 our study design involves the systematic co-extraction of DNA and RNA from the same tissue sections and  
237 derived cell lysates. This study design allows us to save tissue, and most importantly, it allows us analysis  
238 of molecular data from the same portion of tumor, eliminating potential biases due to intratumor  
239 heterogeneity.

240 In this report we detail procedures involved in establishing the appropriate infrastructure for our  
241 multicenter, integrated study. These include tissues and workflow, sample quality and quantity  
242 parameters, and criteria for DNA and RNA distribution for testing, for procuring a balanced proportion of  
243 controls (survivors for >5 years with no evidence of disease) and cases (dead within 5-years of follow up)  
244 across tests. We also report on the various quality control (QC) parameters used. Based on our experience  
245 on already procured data and FFPE tissues from 685 eligible early-stage melanomas from 10 centers, we

246 provide insights into the logistic and technical challenges involved when conducting a large patho-  
247 epidemiologic international and multicenter study of disease-specific survival in 1,000 primary  
248 melanomas from stage II/ III patients.

249

## 250 **Methods**

### 251 **Overview**

252 This retrospective ongoing study aims to collect biospecimens and data from a total of 1,000 eligible  
253 melanoma patients, including patients who died of melanoma within 5 years of diagnosis (referred to as  
254 cases) and patients who lived/are alive for at least 5 years after diagnosis, without evidence of regional or  
255 distant melanoma recurrence or relapse (referred to as controls). Participants are identified through the  
256 multi-center and international consortium 'Integration of Clinical and Molecular Biomarkers for  
257 Melanoma Survival' or InterMEL (11), as further detailed below. The study protocol was approved by the  
258 Institutional Review Boards at each participating institution, material and data user agreements are in  
259 place, and research has been conducted according to the principles expressed in the Declaration of  
260 Helsinki. The Biospecimen Core provides complete pathology and biospecimens support, and appropriate  
261 infrastructure to all investigations. Activities are detailed next and in the Supporting Information.

262

### 263 **Participants**

264 For each participant, the following data elements are being collected by the participating study centers:  
265 demographics, vital status, year of diagnosis, follow up time, progression, recurrence, anthropomorphic  
266 measures, treatment type. For the index primary tumors, single *versus* multiple status, TNM stage (AJCC  
267 Ed. 8), tumor burden or load, and anatomic site are also recorded. The following study centers provided  
268 patients' data and biospecimens as of March 7<sup>th</sup> 2021: Cleveland Clinic (Cleveland, OH), Case Western



269 Reserve University (Cleveland, OH), Dartmouth Cancer Center (Lebanon, NH), the University of Texas MD  
270 Anderson Cancer Center (Houston, TX), Melanoma Institute Australia (Sydney, NSW, Australia), Memorial  
271 Sloan Kettering Cancer Center (New York, NY), New York University Langone Medical Center (New York,  
272 NY), The University of North Carolina (Chapel Hill, NC, hereafter denoted UNC), Roswell Park  
273 Comprehensive Cancer Center (Buffalo, NY), Yale School of Medicine (New Haven, CT). Additional centers  
274 are currently preparing data and tissue for participants not included in this report.

275

## 276 **Biospecimens**

277 The study collects archived tumor and counterpart non-tumor tissue (or germline DNA), following a  
278 detailed protocol and shipping manifest template for the assembly, labeling, transport and shipping of  
279 samples, and communication procedures that are provided in advance to each participating center, with  
280 further guidance provided as needed by the Biospecimens and the Administrative Cores. All tumor  
281 samples are procured from FFPE tissue blocks sectioned at each of the contributing centers, for this study.

282 The overall flow of specimens and related information is depicted in Fig 1. First, study centers  
283 provide the minimal electronic data required to verify eligibility of cases and controls centrally (T.K.L.),  
284 and then eligibility is communicated to the centers, and to the Biospecimens and Administrative Cores.  
285 For eligible melanomas, members of the Molecular Epidemiology Laboratory at Memorial Sloan Kettering  
286 (MSK) in New York print and mail 2D alphanumeric temperature and solvent resistant labels to the  
287 centers. The study centers, in turn, prepare tumor and non-tumor samples following a common  
288 Biospecimen Core Tissue Handling and Sectioning Standard Operating Procedure. Detailed procedures  
289 and recommendations are provided in the Supporting Information, Appendix 1.

290

291 **Fig 1. Summary of specimens and data flow in InterMEL.**

292

## 293 **Pathology review**

294 Tumor H&Es undergo two rounds of centralized pathology review by expert dermatopathologists at MSK  
295 (K.B., C.L.). The initial pathology review serves to confirm the eligibility of the case and the eligibility of  
296 the tissue for nucleic acid extractions. The eligible area is marked with a water-resistant pen directly on  
297 the H&E. The eligible and marked H&Es are then utilized in the Laboratory as guides for (a) determining  
298 and annotating the size of the qualifying tissue area, and (b) for marking the unstained tissue sections in  
299 preparation of nucleic acid extraction (see below). Next, the tumor H&Es are returned to the reference  
300 pathologist for a second –more in-depth, or ‘full’- pathology review. Here, melanoma diagnosis,  
301 histopathologic prognostic features, volume, viability, and purity of available tumor tissue are  
302 documented. The annotated histopathologic prognostic features included, at minimum: Breslow  
303 thickness, ulceration, melanoma subtype (ICD-0-3 morphology code), Clark level, mitotic rate, tumor  
304 infiltrating lymphocytes (TIL) grade, regression, pigmentation, associated nevus, solar elastosis,  
305 predominant cell type, neurotropism. Additional salient observations (e.g., whether tissues appeared to  
306 be decalcified, necrotic, or include scarring) are also noted. Participants and tumor variables and their  
307 definitions are listed in the Supporting Material (Appendix, Supporting Table S1).

308

## 309 **Histopathology-guided co-extraction of nucleic acids from archival** 310 **tissues**

311 For each tumor specimen, systematic marking of qualifying unstained tissue areas is performed. This is  
312 followed by careful scraping of tissues and batched co-extraction of nucleic acids using the AllPrep®  
313 DNA/RNA FFPE Kit (Qiagen). Details on the preliminary optimization, co-extraction procedures, and  
314 aliquoting rules, can be found in the Supporting Information (S1 Appendix, S1 Fig, S2 Appendix). The  
315 extraction kits and procedures utilized for procurement of germline DNA (gDNA), and the detailed

316 procedures utilized for the assessment of DNA and RNA quantity and quality, are also found in the  
317 Supporting Information (S1 Appendix). Upon completion of the co-extraction, H&Es are scanned (for  
318 future image analysis).

319

## 320 **Criteria for allocation of specimens for testing**

321 Primarily, we use the amount of double stranded (dsDNA) tumor and normal DNA, and total RNA as  
322 criteria for distribution for testing. To date, RNA samples with yields of 500ng or greater were distributed  
323 for testing. The distribution of DNA involves consideration of quality, quantity and availability of tumor  
324 and normal DNA for Next Generation Sequencing (NGS), and a balanced distribution of samples/cases for  
325 methylation and NGS. Specifically, we triage study material using the following rules:

- 326 (a) When equal or greater than ( $\geq$ ) 350ng of tumor DNA and  $\geq$ 100ng of normal DNA are obtained, DNAs  
327 are distributed for both mutation (tumor-normal paired DNAs) and methylation testing (tumor DNA).
- 328 (b) When 250 to 349ng of tumor DNA and  $\geq$  100ng of normal DNA are available, DNA samples are  
329 distributed for either mutation or methylation testing, procuring a balanced distribution of controls  
330 (survivors) and cases (dead within 5-years of follow up) across tests.
- 331 (c) Samples with less than 70ng of DNA were held back.
- 332 (d) Participants that lack or have insufficient amounts of germline or non-tumor DNA available are held  
333 back until sent as a tumor DNA-only batch for NGS.

334

335 When pairing tumor and normal DNAs for NGS, we take into consideration both amounts and quality  
336 of the DNA. For example, relatively greater amounts of FFPE tumor DNA are paired with germline DNA  
337 extracted from blood (or lower amounts of blood-DNA is paired with tumor DNA). Qualifying specimens  
338 are plated and distributed with accompanying documentation for testing of mutations at MSK,  
339 methylation at UNC and miRNA profiling at the NYU.

340

## 341 **Screening of somatic mutations, methylation, and miRNA expression**

342 The methodology is described in detail in the Supporting Information, within the S1 Appendix.

343 Briefly, DNA samples are sequenced at Memorial Sloan Kettering using the Integrated Mutation Profilng  
344 of Actionable Cancer Targets or MSK-IMPACT™, a clinically validated and FDA approved hybridization  
345 capture-based next-generation sequencing assay developed to guide cancer treatment (15, 16). At the  
346 University of North Carolina, DNA samples undergo a bisulfite modification, and genome-wide DNA  
347 methylation analysis is performed using the Infinium MethylationEPIC BeadChip kit (Illumina). Filtering  
348 and normalization of output methylation data obtained from the Infinium MethylationEPIC arrays is done  
349 in R (17). RNA samples are evaluated for miRNA expression at New York University using the Nanostring  
350 nCounter® Human v3 miRNA Expression Assay, which includes 800 microRNAs.

351

## 352 **Data handling**

353 The centers providing melanoma specimens prepare an Excel file containing the de-identified information  
354 necessary to assess eligibility. This file is uploaded onto a secure cloud where information is checked semi-  
355 automatically assisted by a custom-built SAS program. As of March 7th, 2021, 793 Excel records (325 cases  
356 and 468 controls) were assessed, and 296 (92%) cases and 413 (88%) controls were deemed eligible for  
357 the study. Additional information regarding communication of eligibility, annotation of data, and data  
358 sharing, is provided in the Supporting Information (S1 Appendix).

359

## 360 **Statistical analysis**

361 Relationships between continuous variables (e.g., tissue area and DNA yield) were tested using Pearson  
362 correlation tests. Fisher's Exact test was used to evaluate the associations among categorical variables  
363 (e.g., survival group and ulceration), and Welch t-test and ANOVA were used to evaluate potential  
364 associations between continuous and categorical variables. Tumor purity expressed by the proportion of  
365 tumor cells, was dichotomized into  $>0.7$  or  $\leq 0.7$  ( $>70$  and  $\leq 70\%$  tumor cells). DNA amplifiability was  
366 dichotomized two ways, according to the DNA amplification of two or more fragments, and three or more  
367 fragments. Pigmentation (absent, lightly pigmented, or heavily pigmented) and the IGO core DNA and  
368 Library QC recommendations (fail, try, pass) were analyzed as three categories, or collapsed into two  
369 categories: pigmentation absent/lightly pigmented vs heavily pigmented, and recommendations Fail vs  
370 Try/Pass. Associations were illustrated using scatterplots, boxplots, and bar graphs. Statistical analyses  
371 were performed in R (17), v.3.6.3.

372

## 373 Results

### 374 Study participants and melanomas

375 This report includes the data and analysis for 685/718 eligible melanomas received at MSK as of March  
376 7<sup>th</sup>, 2021. Upon completion of the initial central pathology review, tissue ineligibility was attributed to:

- 377 - Inability to confirm a primary melanoma diagnosis on tissue sections provided for centralized review:  
378 lymph node metastasis with no definitive primary melanoma; absence of visible skin; presence of  
379 mostly congenital, residual, or deep penetrating nevus
- 380 - Inadequate tissue quality (e.g., decalcified, mostly scar, or mostly necrotic); and/or quantity (e.g.,  
381 melanoma size and/or amounts of remaining tumor

382 Normal tissue was excluded from further analysis when inadequate in size, contaminated with tumor, or  
383 when the counterpart tumor was deemed ineligible. Subsequently, 9 confirmed melanoma patients were  
384 also excluded because they were lost to follow up and/or had died from unknown causes.

385 A second centralized and full pathology review was completed in 561/685 melanomas (as of the cut-off  
386 date for the current analysis and manuscript), and data are summarized in Table 1. Of these 327 (58.3%)  
387 are “controls” (survived >5 years without a melanoma recurrence) and 234 (41.7%) are “cases” (died  
388 within the 5-year follow up period). Most participants were reported being male (61.5%), white (95.2%)  
389 and had a median age at diagnosis of 64 years. Tumor thickness ranged from 1.1 to 120mm. Two-hundred  
390 and eighty-three of the participants (52.2%) presented at diagnosis with stage II and 268 (47.8%) with  
391 stage III at diagnosis. Additional variables of interest were captured (Table 1).

392  
393 **Table 1. Demographic, clinical, and detailed pathologic characteristics for patients and melanomas at**  
394 **the time of initial diagnosis (total, n=561\*).**

<b>Patient and tumor characteristics</b>		<b>N (proportion)</b>
<i>Survival group</i>		
	Died within 5 years of diagnosis	234 (41.7%)
	Lived more than 5 years after diagnosis	327 (58.3%)
<i>Center</i>		
	CCF	87 (15.53%)
	CW	15 (2.7%)
	DTM	77 (13.7%)
	MDA	30 (5.3%)
	MIA	237 (42.2%)
	MSK	6 (1.1%)
	NYU	37 (6.6%)
	UNC	49 (8.7%)
	RPCI	1 (0.2%)
	Yale	22 (3.9%)
<i>Year of diagnosis, median years (IQR)</i>		

		2007 (2004-2009)
<i>Sex</i>		
	Male	345 (61.5%)
	Female	216 (38.5%)
<i>Age at diagnosis, median years (IQR)</i>		64 (52-75)
<i>Race</i>		
	White	534 (95.2%)
	Asian	6 (1.1%)
	Black or African American	5 (0.9%)
	Other	6 (1.1%)
	Missing	10 (1.8%)
<i>Anatomic site</i>		
	Head and Neck	129 (23%)
	Trunk	158 (28.1%)
	Arms	102 (18.2%)
	Legs	170 (30.3%)
	Skin, unspecified	2 (0.4%)
<i>Recurrence</i>		
	No	210 (37.4%)
	Yes	310 (55.3%)
	Missing	41 (7.3%)
<i>Stage</i>		
	II	293 (52.2%)
	III	268 (47.8%)
<i>Pathologic stage</i>		
	II	9 (1.6%)
	IIA	107 (19.1%)
	IIB	118 (21%)
	IIC	59 (10.5%)
	III	8 (1.4%)
	IIIA	30 (5.3%)
	IIIB	51 (9.1%)
	IIIC	155 (27.6%)
	IIID	24 (4.3%)
<i>Breslow thickness, median mm (IQR)</i>		3.8 (2.5 - 6.2)
<i>Clark level</i>		
	2	1 (0.2%)
	3	20 (3.6%)

	4	421 (75%)
	5	103 (18.4%)
	Cannot assess	13 (2.3%)
	Missing	3 (0.5%)
<i>Ulceration</i>		
	Absent	234 (41.7%)
	Present	326 (58.1%)
	Cannot assess	1 (0.18%)
<i>Mitoses</i>		
	Absent	37 (6.6%)
	Present	522 (93%)
	Missing	2 (0.4%)
<i>Perineural invasion</i>		
	Absent	453 (80.7%)
	Present	93 (16.6%)
	Cannot assess	15 (2.7%)
<i>Histology</i>		
	SSM	149 (26.6%)
	NM	61 (10.9%)
	LMM	26 (4.6%)
	ALM	28 (5%)
	Cannot assess	293 (52.2%)
	Missing	4 (0.7%)
<i>Solar elastosis</i>		
	Absent	250 (44.6%)
	Mild/Moderate	150 (26.7%)
	Severe	104 (18.5%)
	Cannot assess	57 (10.2%)
<i>Associated nevus</i>		
	Absent	488 (87%)
	Present	46 (8.2%)
	Cannot assess	24 (4.3%)
	Missing	3 (0.5%)
<i>Pigmentation</i>		
	Absent	224 (39.9%)
	Lightly pigmented	250 (44.6%)
	Heavily pigmented	84 (15%)
	Missing	3 (0.5%)
<i>TILs</i>		
	Brisk	22 (3.9%)
	Non-brisk	471 (84%)



Absent	59 (10.5%)
Cannot assess	7 (1.2%)
Missing	2 (0.4%)

395 \*N=561, total number of eligible melanomas that underwent full pathology review at the time of  
396 the analyses. *Abbreviations:* CW, Case Western Reserve University; CCF, The Cleveland Clinic  
397 Foundation; DTM, Dartmouth Cancer Center; MDA, The University of Texas M.D. Anderson  
398 Cancer Center; MIA, Melanoma Institute of Australia at The University of Sydney; MSK, Memorial  
399 Sloan Kettering Cancer Center; NYU, New York University; UNC, The University of North Carolina  
400 at Chapel Hill; UNM, University of New Mexico; RPCI, Roswell Park Comprehensive Cancer Center;  
401 Yale, Yale School of Medicine. IQR, interquartile range; TILs, tumor infiltrating lymphocytes.  
402

## 403 **Co-extracted tumor RNA and DNA, and gDNA**

404 Results from the preliminary assessment of two co-extraction kits done through an independent, pilot set  
405 of FFPE tissues include quantity and quality assessment, as well as genetic and epigenetic testing (S2  
406 Appendix, S1 Fig, S2 Fig). For the current report and ongoing study, the characteristics of the FFPE target  
407 tissue included in the RNA-DNA co-extraction (tumor FFPE tissue) and in the DNA extraction (non-tumor  
408 FFPE tissue) are shown on Table 2. The total amount of RNA and dsDNA obtained per case increased with  
409 the size of the target tumor tissue, but this was not the case for the dsDNA obtained from the target non-  
410 tumor FFPE (S3 Fig). Quantity and quality characteristics of tumor and non-tumor DNA, and tumor RNA,  
411 are shown on Table 3. Inter-batch replicas had very similar miRNA expression profiles (correlation  
412 coefficient  $r > 0.9$ ), indicating stability of the miRNA in the sample. In general, no significant differences  
413 were noticed across batches of extracted tumors, or lots of reagents. Fingerprinting, testing with SampleID  
414 (Agena Bioscience), and/or NGS revealed six unresolvable discrepant cases for which new specimens were  
415 requested. In four of these, we found differences between the genetic and reported sex, and between  
416 tumor and paired non-tumor DNAs. Germline DNAs were extracted from 375 FFPE non-tumor tissues (279  
417 sets of sections and 96 sets of curls), 15 blood samples, and one saliva sample.

418

419 **Table 2. Assessment of target FFPE tissue areas for extractions of nucleic acids from tumor and non-**  
420 **tumor specimens**

	Tumor, N=685 <sup>^</sup>	Non-tumor, N=279 <sup>^*</sup>
Number of sections, median (range)	7 (4-25)	5 (1-15)
% tumor, median (range)	80 (15-95)	0 (0-40)
Pigmentation visible, N	44	13
Sections thickness, mm median (range)	10 (5-10)	10 (10-10)
Length, mm median (range)	10.5 (2-98)	18 (1-46)
Width, mm median (range)	3 (0.5-21)	6 (0.25-23)
Area per section, mm <sup>2</sup> median (range)	36 (1.8-480)	98 (1-600)
Total tissue area mm <sup>2</sup> median (range)	273 (12.6-4950)	510 (5-4725)
*Time elapsed, days (sectioning to extraction) median (range)	163 (15-655)	112(30-663)

421 <sup>^</sup>\*Number of tissues extracted by the March 7th, 2021 cut-off (this report). \*Counts do not include  
 422 'curls' or tissue sections placed in tubes (n=96), saliva (n=1), or blood/buffy coat (n=209). Note that  
 423 characteristics are for tumors which underwent initial central histopathology review. The targeted  
 424 tissue refers to the histopathology-guided and marked tissue areas, deemed suitable for scraping  
 425 and extraction of nucleic acids.  
 426  
 427

428 **Table 3. Characteristics of RNA and DNA obtained from tumor and non-tumor tissues.**

RNA							
Tumor	Total RNA (ng)	Nanodrop		Total RNA (ng)	TapeStation		Total >200nt (ng)
		A260/A280	A260/A280		RIN	% >200nt	
<i>FFPE, N=685</i>							
Average	11477.7	1.89	0.92	1967.9	2	43.8	1016.1
Median	6432.5	1.9	0.83	1203.3	2	44.1	523
Min	246	1.27	0.03	56.9	1	7.9	7.2
Max	201716	3	5.16	16989	4	100	11464.2
DNA							
Tumor	Total DNA (ng)	Nanodrop		dsDNA (ng)	Qubit		QC PCR N bands
		A260/A280	A260/A230		%dsDNA		
<i>FFPE, N=685</i>							
Average	5395.2	1.9	0.9	1283.4	23.9		2.1
Median	3223.4	1.8	0.7	659.1	23.1		2
Min	53.9	-1.9	-19.3	3.1	1		0
Max	95515.3	9.1	28	25841.5	93.4		4
Normal	Total DNA (ng)	Nanodrop		dsDNA	Qubit		QC PCR N bands
		A260/A280	A260/A230		%dsDNA		

	(ng)					
<i>FFPE, N=279</i>						
Average	13064.0	2.16	1.34	2467.4	19.8	2.2
Median	5097.3	1.99	1.50	573.4	18.2	2.0
Min	136.5	-1.70	0.02	1.2	0.6	0.0
Max	155270.6	6.22	6.24	55316.0	172.5	4.0
<i>Blood, N=9</i>						
Average	8875.0	1.51	0.60	4945.5	46.8	3.4
Median	7354.0	1.62	0.58	1310.8	32.3	4.0
Min	1353.8	1.07	0.25	196.1	5.0	2.0
Max	19888.1	1.85	1.22	17899.3	90.0	4.0

429

### 430 **Melanoma characteristics and quantity/quality of Nucleic Acids (NA)**

431 The tumor characteristics significantly associated with the obtained NA quantity and/or quality are  
 432 depicted on Fig 2 and S4 Fig. There was a positive correlation between the extracted target tissue area  
 433 and the obtained DNA (Fig 2A) and RNA yield (Fig 2B). Greater quantities of RNA relative to the extracted  
 434 tumor area were obtained among stage III melanomas compared to those with stage II: 39.5 vs 32.4  
 435 ng/mm<sup>2</sup> RNA (p<0.01); but for DNA this difference did not reach statistical significance (4.6 vs 3.9 ng/mm<sup>2</sup>  
 436 dsDNA, p=0.06). No associations were observed between the quantity of co-extracted DNA/RNA and  
 437 tumor Breslow thickness, tumor purity (% tumor cells), or time elapsed between tissue block sectioning  
 438 to co-extraction. Time elapsed, however, had an inverse statistically significant association with amplicon  
 439 size on QC-PCR (Fig 2C). TILs were significantly associated with greater amounts of dsDNA (Fig 2D) and  
 440 purity (S4A Fig). Presence of TILs was significantly associated with the ability to generate amplicons  
 441 >200bp (S4B Fig). There was a positive association between pigmentation and quantities of total RNA  
 442 obtained, with heavily pigmented tumors rendering higher yields compared to both lightly pigmented and  
 443 non-pigmented tumors (Fig 2E). DV200 values were also higher in RNAs extracted from pigmented lesions  
 444 (Fig 2F). Ulceration was significantly associated with greater DNA A260/A280 (Fig 2G) and RNA A260/A280

445 values ( $p < 0.045$ , not shown). DNA and RNA samples obtained from heavily pigmented tumors had lower  
446 A260/A280 ratios (Fig 2H-I). DNA from pigmented tumors amplified shorter fragments (S4C Fig). Stage III,  
447 tumor purity, and presence of ulceration were all positively associated with DNA A260/A230 ratios  
448 ( $p = 0.04$ ,  $p = 0.04$ , and  $p = 0.004$ , respectively, data not shown). Evaluation of absorbance (260/280, and  
449 260/230) ratios was limited to samples with concentrations  $\geq 20 \text{ ng}/\mu\text{L}$  as lower concentrations render  
450 inaccurate data. Fig 3 depicts the effect of case characteristics (Fig 3A), time elapsed from sectioning to  
451 co-extraction (Fig 3B), and tumor characteristics (Fig 3C-D), on the recommendations to proceed with the  
452 synthesis of libraries. In addition, we observed a statistically significant association between presence of  
453 ulceration and DNA-QC 'failures', with 15% of DNA samples categorized as failed among ulcerated  
454 melanomas compared to 28% failed DNAs among those without ulceration ( $p < 0.001$ , data not shown).  
455 The effect of DNA and RNA quality characteristics (purity, fragmentation/integrity) on the  
456 recommendations to proceed with (a) the synthesis of libraries and (b) MSK-IMPACT™ assay are shown in  
457 S5 Fig.

458

459 **Fig 2. Effect of melanoma characteristics and time elapsed between tissue sectioning and co-extraction,**  
460 **on the quantity and quality of DNA/RNA.**

461

462 **Fig 3. Effect of case and tumor characteristics, and time elapsed between sectioning and co-extraction**  
463 **on the core's DNA-QC score.**

464

465 **Distribution of nucleic acids for genetics and epigenetics testing, and**  
466 **preliminary QC**

467 Almost all RNA samples, 683/685 (99%), qualified for distribution for miRNA expression analysis with the  
 468 Nanostring nCounter® Human v3 miRNA Expression assay, 467 (68%) DNA samples for methylation  
 469 profiling with the Illumina Infinium MethylationEPIC arrays, and 560 (82%) DNA samples, for somatic  
 470 mutation profiling by NGS with the MSK-IMPACT™ assay (Fig 4). In 446 (65%) cases, aliquots of RNA and  
 471 DNA were distributed for testing with all three platforms. We compared the melanoma and tissue  
 472 characteristics among cases with samples that qualified across testing platforms to evaluate potential  
 473 biases or imbalances, and these characteristics are shown on Table 4.

474

475 **Fig 4. Biospecimens received, processed, and distributed for testing.**

476

477 **Table 4. Characteristics of participants and their melanomas for cases and controls with available full**  
 478 **histopathology review and with samples allocated for testing, by miRNA, methylation, and mutation**  
 479 **profiling platforms.**

	All samples	Tested on all 3 platforms*	miRNA*	methylation*	NGS mutations*
<i>N</i>	561	396	559	414	482
<i>Age</i>					
median years (IQR)	64 (52-75)	64 (54-75)	64 (52-75)	64 (53-75)	64 (53-76)
<i>Sex</i>					
male	345 (61.5%)	248 (62.6%)	343 (61.4%)	262 (63.3%)	299 (62.0%)
female	216 (38.5%)	148 (37.4%)	216 (38.6%)	152 (36.7%)	183 (38.0%)
<i>Survival Group</i>					
survived ≤5 years	327 (58.3%)	212 (53.5%)	327 (58.5%)	225 (54.4%)	271 (56.2%)
died <5 years	234 (41.7%)	184 (46.5%)	232 (41.5%)	189 (45.6%)	211 (43.8%)
<i>Breslow thickness</i>					
median mm (IQR)	3.8 (2.5-6.2)	4.2 (2.8-6.8)	3.8 (2.5-6.2)	4.2 (2.7-6.8)	4.0 (2.5-6.5)
not available	3	2	2	2	2
<i>Ulceration</i>					
present	326 (58.2%)	248 (62.8%)	325 (58.2%)	258 (62.5%)	289 (60.0%)
absent	234 (41.8%)	147 (37.2%)	233 (41.8%)	155 (37.5%)	192 (40.0%)

	<i>not available</i>	1	1	1	1	1
<i>Mitoses</i>						
	present	522 (93.4%)	377 (95.2%)	522 (93.4%)	392 (94.7%)	453 (94.0%)
	absent	37 (6.6%)	19 (4.8%)	37 (6.6%)	22 (5.3%)	29 (6.0%)
	<i>not available</i>	2				
<i>Pigmentation</i>						
	absent/ not pigmented	224 (40.1%)	160 (40.9%)	223 (40.1%)	169 (41.0%)	193 (40.2%)
	lightly pigmented	250 (44.8%)	174 (43.9%)	249 (44.8%)	179 (43.5%)	214 (44.6%)
	heavily pigmented	84 (15.1%)	60 (15.2%)	84 (15.1%)	64 (15.5%)	73 (15.2%)
	<i>not available</i>	3	2	3	2	2
	absent/lightly pigmented	474 (85.0%)	334 (84.8%)	472 (84.5%)	348 (84.5%)	407 (85.8%)
	heavily pigmented	84 (15.0%)	60 (15.2%)	84 (15.1%)	64 (15.5%)	73 (15.2%)
	<i>not available</i>	3	2	3	2	2
<i>Stage</i>						
	II	293 (52.2%)	200 (50.5%)	292 (52.2%)	207 (50.0%)	252 (52.5%)
	III	268 (47.8%)	196 (49.5%)	267 (47.8%)	207 (50.0%)	230 (47.7%)

480 \*N indicate availability of samples, data and data-analysis by the cut-off date. Allocation of samples for  
 481 testing depends on the availability of tumor RNA (miRNA expression), tumor DNA (methylation), tumor and  
 482 germline DNA (NGS, next generation sequencing for somatic mutations). For limited DNA, distribution for  
 483 methylation or NGS contemplates survival group and overall balanced numbers across these two platforms.  
 484 Proportions within each column sum up to 100% and do not consider the few unavailable datapoints, as  
 485 shown above. Age, tumor Breslow thickness, and stage correspond to the initial diagnosis. Breslow and  
 486 ulceration correspond to the maximum value reported either at diagnosis or during the centralized pathology  
 487 review.  
 488

489 Upon testing, 41 of 414 (10%) DNA samples with available methylation data for the present study failed  
 490 QC due to low intensity probes ( $p > 0.05$ ) or insufficient single-sample Noob-normalization or BMIQ-  
 491 normalization. We evaluated the effect of survival, marginally associated with failures (Fig 5A), to assess  
 492 differences in the attrition between cases and controls. Characteristics associated with methylation  
 493 screening failure were year of diagnosis (i.e. age of the blocks) (Fig 5B), time elapsed from sectioning to  
 494 extraction (Fig 5C), %dsDNA (Fig 5D), and amplifiability (Fig 5D). Six of 683 (1%) RNA samples failed the  
 495 Nanostring-based QC. These samples were flagged and then deemed unsuitable for data analysis because  
 496 of their low proportion of probes above the minimal threshold. Inter-batch replicas showed a very similar  
 497 miRNA expression profile before ( $r > 0.8$ ) and after correcting for batch effect ( $r > 0.9$ ). There were no  
 498 variables found in association with Nanostring flags or failures.

499

500 **Fig 5. Effect of case, tumor, DNA characteristics, and logistics, on the success of methylation screening.**

501

502 Of the samples sent for mutations screening with the MSK-IMPACT™ assay, 5 samples were subsequently  
503 deemed ineligible, 317/560 (57%) were run through the pipeline, and had data available for the present  
504 analysis. On average, the coverage was 249x, with a range of 22x to 762x, and 59 (18.6%) samples had  
505 coverage below 100x (Fig 4). The recommendations to proceed (or hold samples back) with the synthesis  
506 of libraries or MSK-IMPACT assay were significantly associated with coverage ( $p < 0.01$ ) (S6 Fig); however,  
507 no significant associations were found between the amount of tissue extracted or any of the NA  
508 characteristics with samples scored as ‘fail’ by the genetics core (DNA-QC, Lib-QC). For details on data  
509 availability, see S1 Appendix.

510

## 511 **Discussion**

512 We have delineated a step-by-step approach for the handling of biospecimens and for data collection in  
513 a large multi-center international study, including quality assurance and quality control, in preparation for  
514 multi-omics testing from small sample size archival primary melanoma tissue. A unique aspect of this  
515 study is the testing of DNA and RNA co-extracted from the same cell lysate obtained from FFPE tissues.  
516 This co-extraction is critical for the proper integration of data obtained from multi-omics platforms utilized  
517 for the screening of mutations, methylation, and miRNA profiling, with protein expression and mRNA  
518 planned in the near future.

519 FFPE tissue blocks of primary melanomas are extremely valuable as they represent the target  
520 lesion or ‘index tumor’ of interest and are accompanied by a vast array of clinicopathologic information.  
521 The process of formalin fixation and paraffin embedding helps conserve the cells topography, and blocks

522 can be stored for decades without the need of ultra-low temperatures storage. However, it is well known  
523 that greater amounts and quality of nucleic acids may be obtained from fresh frozen tissues. Melanomas  
524 in particular, compared to other solid tumors, are most often very small at the time of diagnosis, and for  
525 purposes of accurate diagnosis the whole biopsy needs to be FFPE-processed. Thus, once diagnosis is  
526 completed as part of the standard care, only a limited amount of FFPE tissue remains available for  
527 research. While archived FFPE tissues are more likely to be available and more convenient for precision  
528 medicine, they present some challenges (18). Because formalin forms cross-links during fixation that cause  
529 fragmentation during DNA extraction, and introduces contaminants, the use of FFPE can introduce  
530 artifacts in molecular profiling, although newer laboratory techniques, and analytical tools, help reduce  
531 the errors.

532 Our priority is obtaining sufficient 'quality' DNA and RNA without exhausting FFPE blocks. In most  
533 cases, tumor tissues were procured as per our standard operating procedures, and when necessary fewer  
534 or greater number of sections were provided when necessary (due to scarcity of tissue or evidence of  
535 particularly small tumor areas). Non-tumor FFPE tissues, characterized by a lower cell (and nuclei) density,  
536 yield lower and less predictable amounts of DNA. Few centers have access to blood, buccal cells/saliva, or  
537 other tissue sources of non-tumor germline DNA. While surrounding tumor tissue may have some genetic  
538 change due to field effects, it is still preferable to utilize adjacent normal tissue when no other source of  
539 germline DNA is available. We preferentially distribute tumor DNA paired with matched normal for  
540 somatic mutations profiling with MSK-IMPACT™; however, matched normal samples are not always  
541 available, or sufficient. While matched tumor-normal DNAs doubles the NGS costs, this approach provides  
542 'clean' or accurate somatic mutation calling, free of germline artifacts. In addition, germline DNA allows  
543 the uncovering of potential mismatches, discrepancies, or contamination, through DNA fingerprinting. Of  
544 note, in this study we uncovered a very small fraction of discrepant samples, and even fewer remained  
545 unsolvable (0.9%) after rematching, or replacement of germline DNA. For melanomas in which the



546 matching germline DNA is not available or the amount and/or quality inadequate, we submit tumor-only  
547 batches for analyses against a pool of normal DNA. To this effect, a robust pipeline has been developed  
548 to identify germline artifacts, taking into account coverage, allele level, copy number, and tumor purity  
549 (Arshi Arora, manuscript in preparation). A related concern is the choice of volume for the elution of  
550 nucleic acids during the extraction (normal tissue) and co-extraction (tumors). On the one hand, greater  
551 eluates recover more DNA from the column but at lower concentrations, risking greater inaccuracy. On  
552 the other hand, with eluates that are too small, more DNA is lost to the column, capillary action, and to  
553 quantity and quality measurements. The ideal volume needs to be adapted according to preliminary co-  
554 extractions on similar tissues. Samples <20ng/ul are less reliable for determining purity accurately and  
555 this, plus much more stringent criteria, may contribute to the differences observed in the QC assessments  
556 obtained by our InterMEL Biocore for the NGS pipeline versus the CLIA-approved process that was  
557 developed by MSK for clinical use.

558         In ideal conditions, tissues would render sufficient nucleic acids for QC and distribution to all three  
559 testing platforms. In our experience with small primary melanomas, 35% of the eligible cases had  
560 insufficient material for all 3 omics platforms: somatic mutations, methylation, and miRNA. Individually,  
561 99.7% of the eligible cases had sufficient RNA for miRNA analysis, 78.8% for NGS, and 68.2% for  
562 methylation. To evaluate methylation, samples need to undergo an initial treatment with bisulfite, to  
563 convert unmethylated Cs to Ts. This treatment converts double-stranded DNA into more labile and  
564 unpaired single stranded DNA. Older tissue blocks and sections with more fragmented co-extracted DNA,  
565 will be naturally more susceptible to degradation, resulting in greater attrition, despite the use of a kit to  
566 restore degraded FFPE DNA (Fig 5). Melanomas with double-stranded DNA quantities below the threshold  
567 for methylation and mutation screening (~320 to 350ng double-stranded DNA), are adjudicated in nearly  
568 equal numbers for testing with one or the other DNA platform. In addition, in making this choice we  
569 considered their case-control status as well as availability (or not) of germline DNA for NGS. We also

570 evaluated whether certain patient and tumor characteristics biased the distribution of samples across  
571 testing platforms. Age and sex were comparable across testing platforms, while some differences were  
572 noticed in the proportion of samples from patients who were stage III, died of melanoma within five-  
573 years, had thicker tumors, or with ulceration or mitoses (Table 4). The differences were not large, and  
574 these clinicopathologic variables will be included as covariates in downstream/formal statistical analyses.

575 Another important consideration is the timing of tissue sectioning. Because centralized block  
576 sectioning is not feasible, and most contributing centers are geographically distant from MSK, we wanted  
577 to minimize the time elapsed between sectioning and nucleic acid co-extraction, which is fully dependent  
578 on diagnostic confirmation/ histopathology review and marking of H&Es. The COVID-19 pandemic added  
579 unanticipated delays through complete closures in the first couple of months, followed by a few months  
580 of limited access to the research facilities, and major delays in the supply-chain, with sectioned tissues  
581 awaiting extractions for a very prolonged time. Indeed, the elapsed time had a detrimental effect on the  
582 DNA performance, which was evident through the ability to amplify fragments  $\geq 300$ nt, synthesis of  
583 libraries for NGS, and the success of the methylation screening (Figs 2, 3; and 5).

584 Interestingly, we obtained greater amounts of RNA in heavily pigmented tissue. We posit that the  
585 melanin content decreases the pH, and that this may inhibit the enzymatic activity of the RNAses,  
586 otherwise ubiquitously present, an idea further supported by the greater proportion of RNA strands  
587  $>200$ nt in heavily pigmented melanomas (Fig 2). Melanin is known to inhibit some enzymatic reactions  
588 (19, 20) including amplification with Taq polymerase. Not surprisingly, samples obtained from heavily  
589 pigmented melanomas, on average, amplified shorter fragments (S4 Fig); however, we chose to not add  
590 an extra treatment to the samples as this would have affected the total yield. Unlike pigmentation, TILs  
591 and ulceration improved the DNA A260/A280 ratios, and samples from melanomas with brisk TILs showed  
592 greater %dsDNA and amplifiability, perhaps due to more actively dividing cells (21) resulting in increased  
593 cellularity. Samples with greater purity and %dsDNA were better scored by the core, but not those with

594 higher RNA integrity. We have not found an explanation for this effect yet, although, no single variable or  
595 set of DNA variables was associated alone with the core's prediction for failure, or with the coverage  
596 obtained through the MSK-IMPACT™ assay. This differs to some extent to findings from others who  
597 reported block age as the most important variable that influenced sample viability for amplicon-based  
598 library construction (22). For methylation, on the other hand, there are clear associations between year  
599 of diagnosis (as a proxy of block's age), time elapsed between sectioning and extraction, %dsDNA, and  
600 amplifiability, with failures (Fig 5).

601 Another important consideration is the jurisdiction of the centers providing tissues and data. For  
602 instance, in 2020, a European center expressed interest in joining our efforts and contributing with a  
603 substantial number of cases. However, to comply with the General Data Protection Regulation 2016/679  
604 (regulation in EU law, on data protection/privacy in the EU), a thorough analysis, numerous audits and  
605 reviews are taking place in relation to detailed information on (i) where specimens and data from EU will  
606 be located, (ii) who will have access to samples and data, (iii) how data and specimens are protected, and  
607 (iv) which systems and applications will be used to process, store, and run data derived for the samples  
608 from EU. This major delay may potentially affect the feasibility of including these specimens if samples  
609 cannot be procured and tested in time for analyses, especially since tissues cannot be sectioned in  
610 advance. International collaborations are important for ensuring worldwide representation of patient  
611 samples. Investigators should plan for these international regulatory steps, when planning future  
612 consortia.

613 In summary, we find only two variables that, to some extent, could be controlled in future studies  
614 of archival tumors and that have a detrimental effect on the quality of the extracted DNA from melanoma  
615 tumors: age of the FFPE tissue blocks, and time elapsed between block sectioning and co-extraction.  
616 Because of the large individual sample variability, we were not able to define any variable predictive of  
617 success on NGS; consequently, we will continue using a combination of quantity and quality parameters

618 when choosing and preparing aliquots for screening DNA samples with the MSK-IMPACT™, and we will  
619 continue aiming to decrease the time elapsed between sectioning, extraction, and testing. The co-  
620 extracted RNA does not appear to be affected by the age of the block or time elapsed, but surprisingly,  
621 presence of melanin might impart some protection against RNA degradation in FFPE tissues. The greater  
622 RNA amounts and RIN values obtained in pigmented melanomas, to the best of our knowledge, are not  
623 artifactual, and are possibly due to a change in acidity or pH. Although pigment has no impact on the  
624 success of the miRNA screening with Nanostring, our observations are intriguing and worthy of further  
625 consideration. Of the 685 eligible cases, 65% of the melanomas rendered sufficient material for testing by  
626 all three omics platforms. The implication is that in future studies of early-stage melanomas using archival  
627 tissues, one should aim to accrue sufficient material to allow a 35% attrition, when the goal is to obtain  
628 genetic and epigenetic profiling such as ours. Furthermore, when considering the methylation failures,  
629 the ideal target would permit 40% attrition. We anticipate that these reported practical guidelines for the  
630 procurement, preparation, quality control, and testing of co-extracted DNA and RNA for the screening of  
631 actionable somatic mutations, methylation and miRNA using high-throughput platforms, as well as our  
632 data and insight will be of value to others with their ongoing and future investigations using valuable  
633 archival yet limited tissues.

634

635

## 636 **Acknowledgements**

637

638 This study was conducted by the InterMEL consortium, which includes the following members:  
639 Coordinating Center, University of New Mexico, Albuquerque, NM, USA; Marianne Berwick (Principal  
640 Investigator (MPI, contact PI)), Li Luo (Investigator), Tawny W. Boyce (Data Manager), Adam Z. Reynolds  
641 (Data Analyst); University of North Carolina, Chapel Hill, NC: Nancy E. Thomas (MPI), Kathleen Conway  
642 (Investigator), Sharon N. Edmiston (Research Analyst), David W. Ollila (Surgical Oncologist and  
643 Investigator), Honglin Hao (Laboratory Specialist), Eloise Parrish (Laboratory Specialist), Paul B. Googe  
644 (Dermatopathologist), Stergios J. Moschos (Oncologist), David Corcoran (Bioinformatician), Weida Gong  
645 (Bioinformatician), Amanda Vondras (Bioinformatician), Lan Lin (Database Manager); Study centers  
646 include the following: Memorial Sloan Kettering Cancer Center, New York, NY: Ronglai Shen (PI-Project

647 4), Colin B. Begg (Biostatistician), Arshi Arora (Biostatistician), Venkatraman Seshan (Biostatistician),  
648 Caroline E. Kostrzewa (Assistant Research Biostatistician), Klaus J. Busam (PI-Core2), Irene Orlow (Co-PI-  
649 Core 2), Jessica M. Kenney (Research Assistant/Sr. Laboratory Specialist), Keimya D. Sadeghi (Research  
650 Assistant and Data Engineer), Kelli O'Connell (Research Biostatistician), Gbemisola Elizabeth Ilelaboye  
651 (Senior Research Technician); initial optimization assays were performed at MSK by Heta Parmar, Siok  
652 Leong, and Sergio Corrales (Research Technicians); Melanoma Institute Australia, Sydney, Australia:  
653 Richard A. Scolyer (Dermatopathologist and Site PI), Anne E. Cust (Epidemiologist and Site PI), James S.  
654 Wilmott (Scientist), Graham J. Mann (Cancer Geneticist and Former Site PI), Ping Shang (Scientist), Hazel  
655 Burke (Data Manager), Peter M. Ferguson (Pathologist), Valerie Jakrot (Research Manager); British  
656 Columbia Cancer Research Center, Vancouver, Canada: Tim K. Lee (Data Coordinator); New York  
657 University, Langone Cancer Center, New York, NY: Eva Hernando (Site PI), Iman Osman (co-Investigator),  
658 Douglas Hanniford (Instructor), Diana Argibay (Laboratory Technician), Una Moran (Data Technician), for  
659 the Genomics Technology Center: Adriana Heguy (Director), Sitharam Ramaswami (Associate Research  
660 Scientist); Baylor College of Medicine, Houston, TX: Christopher I. Amos (Advisor), Ivan P. Gorlov (PI- Core  
661 3), Dakai Zhu (Data Analyst); Roswell Park Cancer Institute, Buffalo, NY: Marc Ernstoff (Advisor), Paul N.  
662 Bogner (Dermatopathologist); The University of Texas MD Anderson Cancer Center, Houston, TX: Jeffrey  
663 E. Lee (Site PI), Shenying Fang (Biostatistician); Dartmouth Cancer Center, Lebanon, NH: Judy R. Rees (Site  
664 PI), Shaofeng Yan (Pathologist); Case Western University, Cleveland, OH: Meg R. Gerstenblith (Site PI),  
665 Cheryl Thompson (Co-Investigator); Cleveland Clinic, Cleveland, OH: Jennifer S. Ko (Dermatopathologist  
666 and Site PI), Pauline Funchain (Co-Investigator), Peter Ngo (Dermatology Fellow); Yale University Cancer  
667 Center, New Haven, CT: Marcus Bosenberg (Site PI), Bonnie E. Gould Rothberg (Former Site PI), Gauri  
668 Panse (Dermatopathologist); Columbia University Medical School, New York, NY: Yvonne M. Saenger (Site  
669 PI), Benjamin T. Fullerton (Laboratory Technician); Huntsman Cancer Institute, Salt Lake City, UT: Sheri L.  
670 Holmen (Site PI), Howard Colman (Co-Investigator), Elise K. Brunsgaard (Clinical Fellow), David Wada  
671 (Dermatopathologist); Instituto Valencia de Oncologia, Valencia, Spain: Eduardo Nagore (Site PI),  
672 Esperanza Manrique-Silva (Dermatologist), Celia Requena (Dermatologist), Victor Traves (Pathologist),  
673 David Millan-Esteban (Post-Doctoral Fellow). Patient Advocate: Michelle Rainka.

674 The contribution of our colleagues at the Melanoma Institute Australia and Royal Prince Alfred Hospital is  
675 gratefully acknowledged. We also wish to acknowledge the invaluable support provided at MSK by:  
676 members of the Integrative Genomics Operation (IGO), Kety Huberman, Marisa Dunigan, Agnes Viale, PhD  
677 and Neeman Mohibullah PhD; Center for Molecular Oncology & Informatics, Nicholas Socci; members of  
678 the Department of Epidemiology & Biostatistics: Alexandra Rizzatti (Administrative Assistant), Bradley  
679 Cohen (Sr. Project Manager), Sharon Bayuga (Associate Director, Clinical Research Operations – Research  
680 & Technology Management); Marketing & Communications: Susan Weil (Design & Creative Services  
681 Production Manager).

682

## 683 **References**

- 684 1. Siegel RL, Miller KD, Fuchs HE, Jemal A. Cancer statistics, 2022. *CA Cancer J Clin.* 2022;72(1):7-33.  
685 2. Howlader N, Noone A, Krapcho M, Garshell J, Neyman N, Altekruse S, et al. SEER Cancer  
686 Statistics Review Bethesda, MD: National Cancer Institute; 1975-2010 [updated April 2013. Available  
687 from: [http://seer.cancer.gov/csr/1975\\_2010/](http://seer.cancer.gov/csr/1975_2010/).

- 688 3. Soong SJ, Ding S, Coit D, Balch CM, Gershenwald JE, Thompson JF, et al. Predicting survival  
689 outcome of localized melanoma: an electronic prediction tool based on the AJCC Melanoma Database.  
690 *Ann Surg Oncol.* 2010;17(8):2006-14.
- 691 4. Macdonald JB, Dueck AC, Gray RJ, Wasif N, Swanson DL, Sekulic A, et al. Malignant melanoma in  
692 the elderly: different regional disease and poorer prognosis. *J Cancer.* 2011;2:538-43.
- 693 5. MacKie RM. Malignant melanoma: clinical variants and prognostic indicators. *Clin Exp Dermatol.*  
694 2000;25(6):471-5.
- 695 6. Gershenwald JE, Scolyer RA, Hess KR, Sondak VK, Long GV, Ross MI, et al. Melanoma staging:  
696 Evidence-based changes in the American Joint Committee on Cancer eighth edition cancer staging  
697 manual. *CA Cancer J Clin.* 2017;67(6):472-92.
- 698 7. Howard MD, Wee E, Wolfe R, McLean CA, Kelly JW, Pan Y. Anatomic location of primary  
699 melanoma: Survival differences and sun exposure. *J Am Acad Dermatol.* 2019;81(2):500-9.
- 700 8. Joosse A, Collette S, Suci S, Nijsten T, Patel PM, Keilholz U, et al. Sex is an independent  
701 prognostic indicator for survival and relapse/progression-free survival in metastasized stage III to IV  
702 melanoma: a pooled analysis of five European organisation for research and treatment of cancer  
703 randomized controlled trials. *J Clin Oncol.* 2013;31(18):2337-46.
- 704 9. Lasithiotakis K, Leiter U, Meier F, Eigentler T, Metzler G, Moehrle M, et al. Age and gender are  
705 significant independent predictors of survival in primary cutaneous melanoma. *Cancer.*  
706 2008;112(8):1795-804.
- 707 10. Cancer Genome Atlas N. Genomic Classification of Cutaneous Melanoma. *Cell.*  
708 2015;161(7):1681-96.
- 709 11. InterMEL [Available from: <https://intermel.org/about/>].
- 710 12. Atkins MB, Curiel-Lewandrowski C, Fisher DE, Swetter SM, Tsao H, Aguirre-Ghiso JA, et al. The  
711 State of Melanoma: Emergent Challenges and Opportunities. *Clin Cancer Res.* 2021;27(10):2678-97.
- 712 13. Luke JJ, Rutkowski P, Queirolo P, Del Vecchio M, Mackiewicz J, Chiarion-Sileni V, et al.  
713 Pembrolizumab versus placebo as adjuvant therapy in completely resected stage IIB or IIC melanoma  
714 (KEYNOTE-716): a randomised, double-blind, phase 3 trial. *Lancet.* 2022.
- 715 14. Makunts T, Burkhart K, Abagyan R, Lee P. Retrospective analysis of clinical trial safety data for  
716 pembrolizumab reveals the effect of co-occurring infections on immune-related adverse events. *PLoS*  
717 *One.* 2022;17(2):e0263402.
- 718 15. Cheng DT, Mitchell TN, Zehir A, Shah RH, Benayed R, Syed A, et al. Memorial Sloan Kettering-  
719 Integrated Mutation Profiling of Actionable Cancer Targets (MSK-IMPACT): A Hybridization Capture-  
720 Based Next-Generation Sequencing Clinical Assay for Solid Tumor Molecular Oncology. *J Mol Diagn.*  
721 2015;17(3):251-64.
- 722 16. Zehir A, Benayed R, Shah RH, Syed A, Middha S, Kim HR, et al. Mutational landscape of  
723 metastatic cancer revealed from prospective clinical sequencing of 10,000 patients. *Nat Med.*  
724 2017;23(6):703-13.
- 725 17. The R Project for Statistical Computing 2022 [Available from: [www.R-project.org](http://www.R-project.org)].
- 726 18. Gaffney EF, Riegman PH, Grizzle WE, Watson PH. Factors that drive the increasing use of FFPE  
727 tissue in basic and translational cancer research. *Biotech Histochem.* 2018;93(5):373-86.
- 728 19. Vicente A, Bianchini RA, Laus AC, Macedo G, Reis RM, Vazquez VL. Comparison of protocols for  
729 removal of melanin from genomic DNA to optimize PCR amplification of DNA purified from highly  
730 pigmented lesions. *Histol Histopathol.* 2019;34(9):1089-96.
- 731 20. Satyamoorthy K, Li G, Van Belle PA, Elder DE, Herlyn M. A versatile method for the removal of  
732 melanin from ribonucleic acids in melanocytic cells. *Melanoma Res.* 2002;12(5):449-52.
- 733 21. Pujani M, Jain H, Chauhan V, Agarwal C, Singh K, Singh M. Evaluation of Tumor infiltrating  
734 lymphocytes in breast carcinoma and their correlation with molecular subtypes, tumor grade and stage.  
735 *Breast Dis.* 2020;39(2):61-9.

736 22. Millan-Esteban D, Reyes-Garcia D, Garcia-Casado Z, Banuls J, Lopez-Guerrero JA, Requena C, et  
737 al. Suitability of melanoma FFPE samples for NGS libraries: time and quality thresholds for downstream  
738 molecular tests. *Biotechniques*. 2018;65(2):79-85.

739

740

## 741 **Supporting Information**

742 **Appendix 1: Methods.**

743 **Appendix 2: Preliminary Results.**

744 **Appendix 3: Supporting Figures.**

745 **S1 Fig. Quantity and quality assessment of RNA and DNA co-extracted from FFPE.**

746 **S2 Fig. Performance of RNA co-extraction kit and elution on Nanostring™.**

747 **S3 Fig. Effect of FFPE tissue input on the yield of co-extracted nucleic acids.**

748 **S4 Fig. Effect of TILs and pigmentation on DNA purity and amplifiability.**

749 **S5 Fig. Effect of the DNA and RNA quality on recommendations to proceed with synthesis of**  
750 **libraries and NGS/MSK-IMPACT™.**

751 **S6 Fig. Comparison of DNA- and library-QC recommendations with coverage obtained in**  
752 **melanomas screened with the MSK-IMPACT™ assay.**

753 **Table S1. InterMEL: Participants and melanoma variables and definitions.**



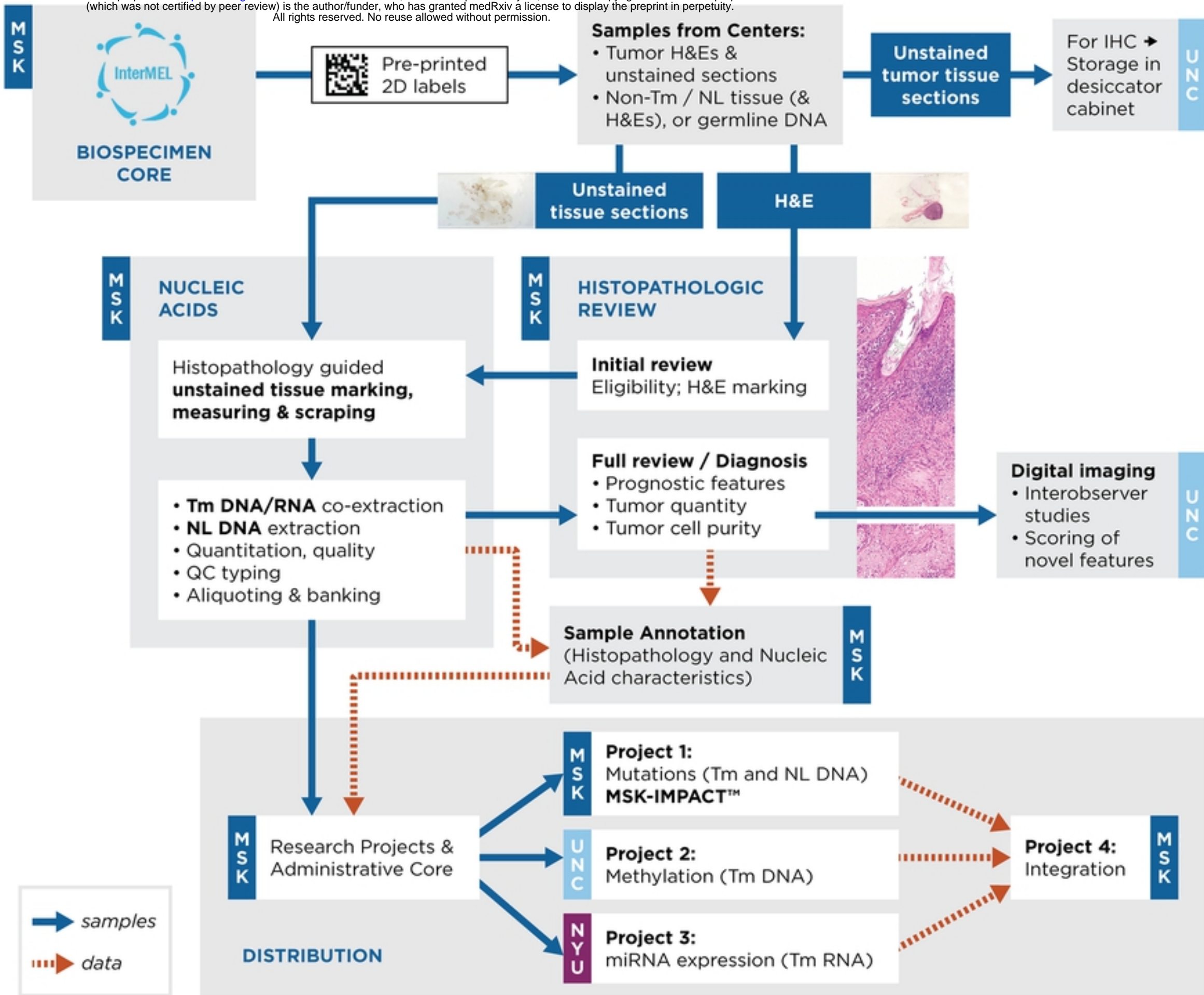


Fig1



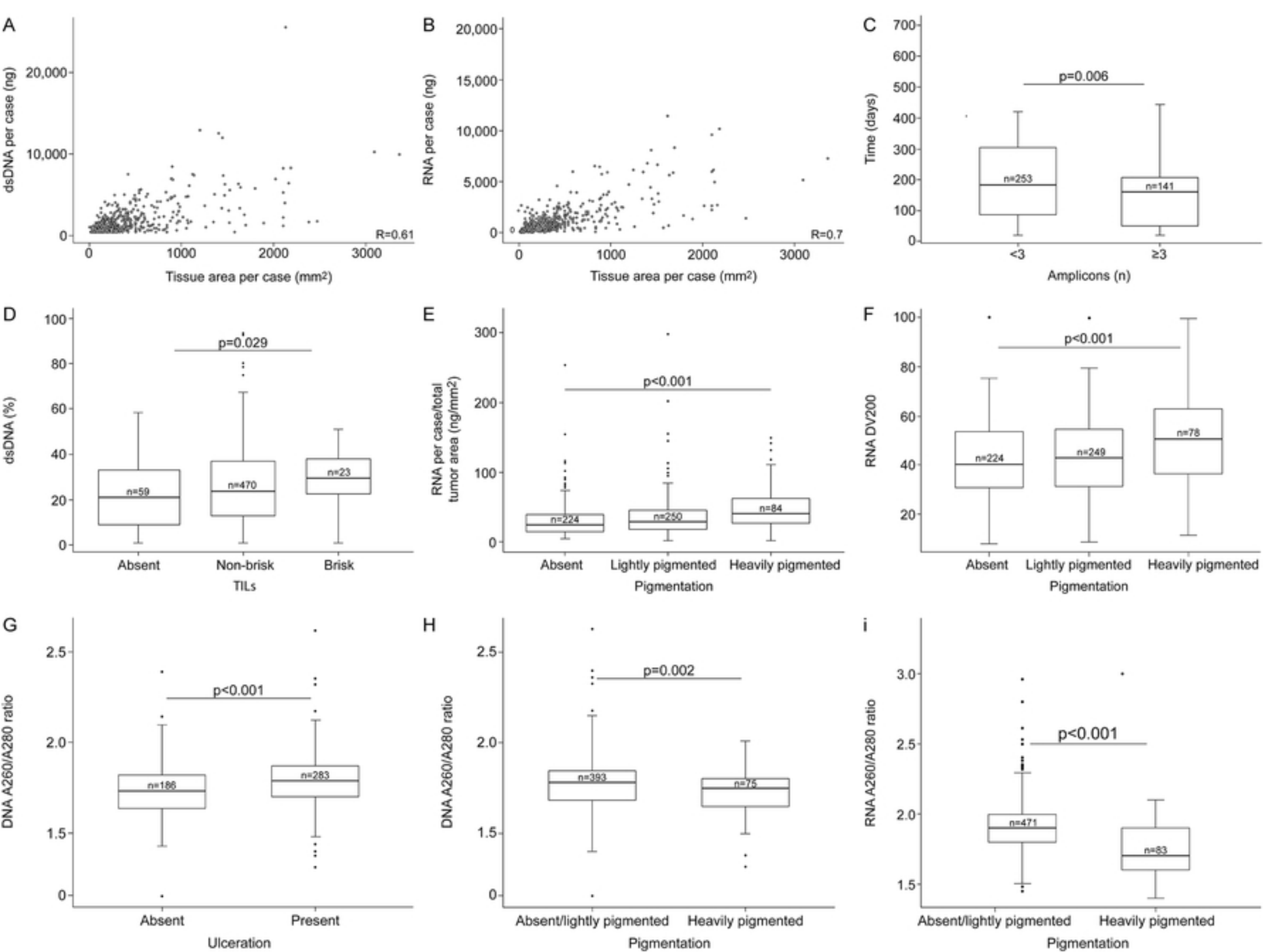


Fig2

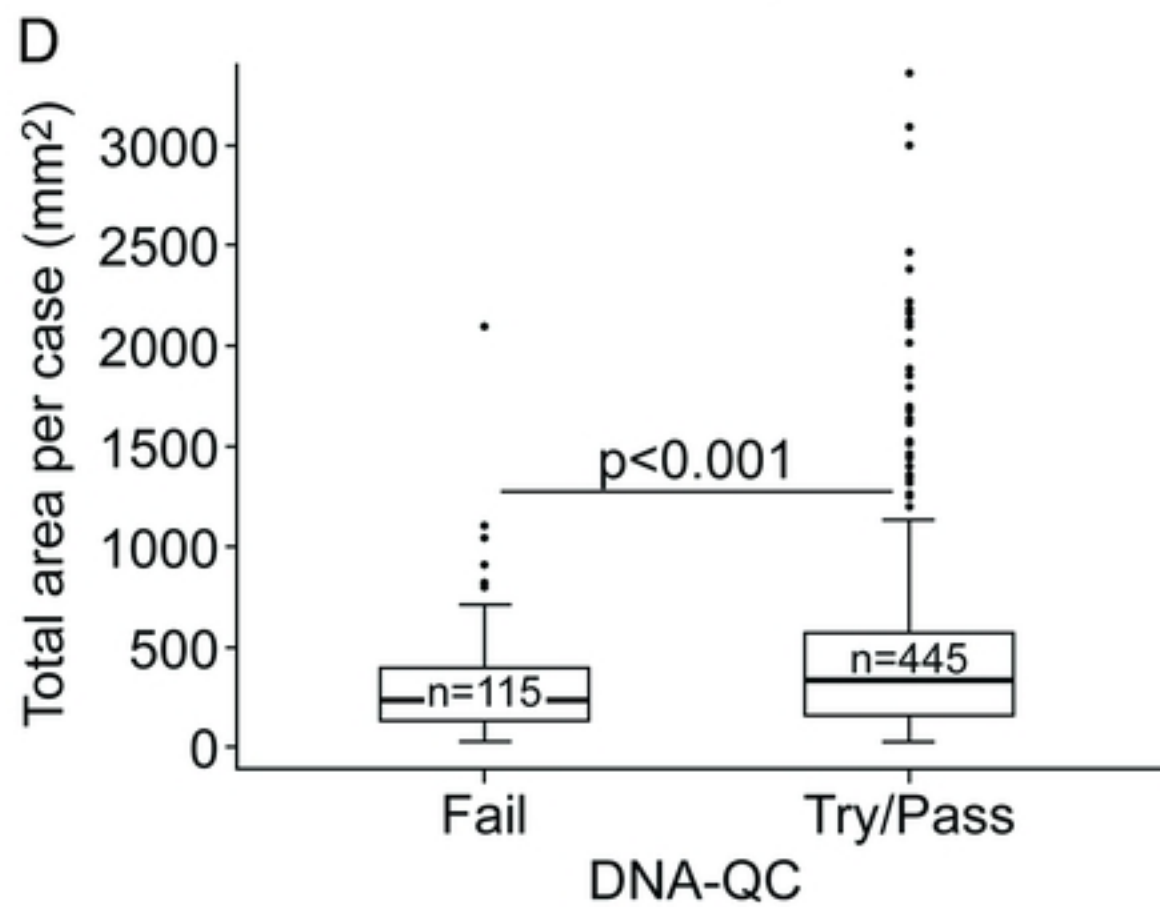
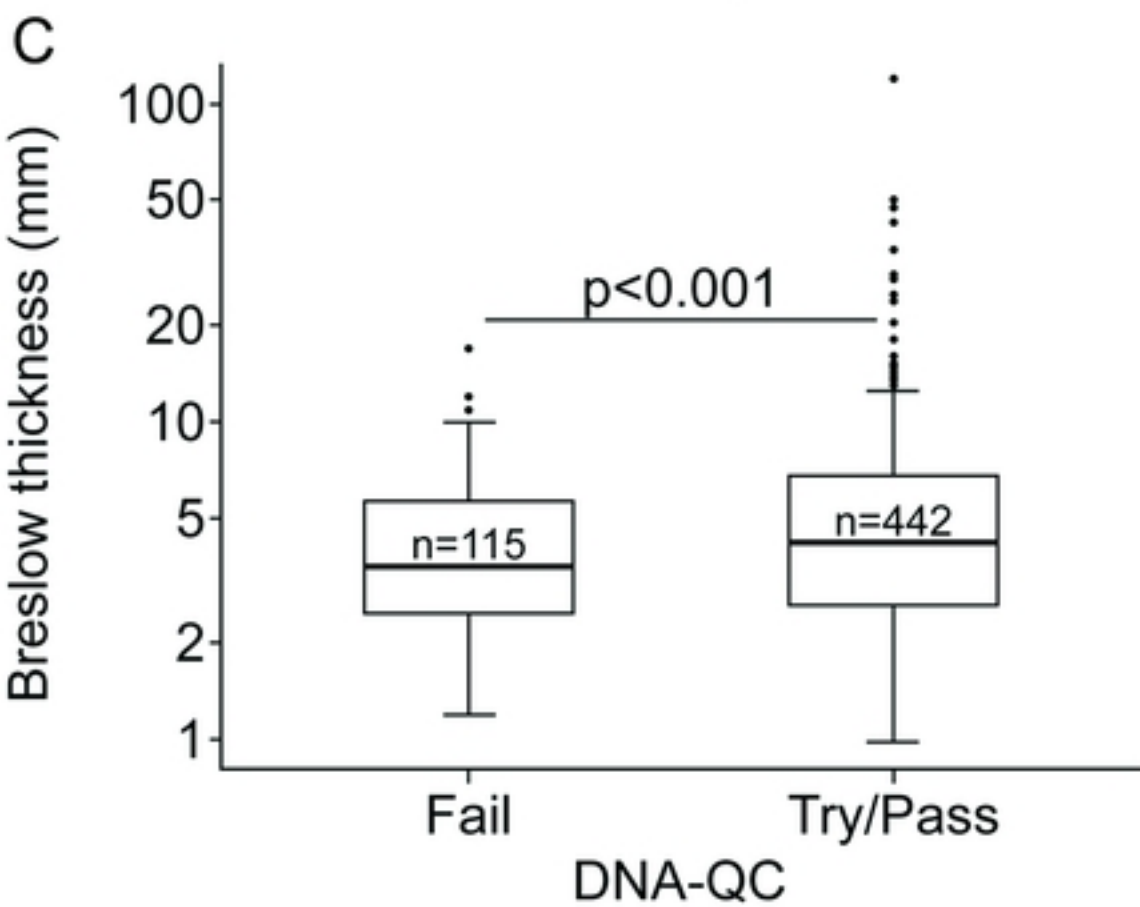
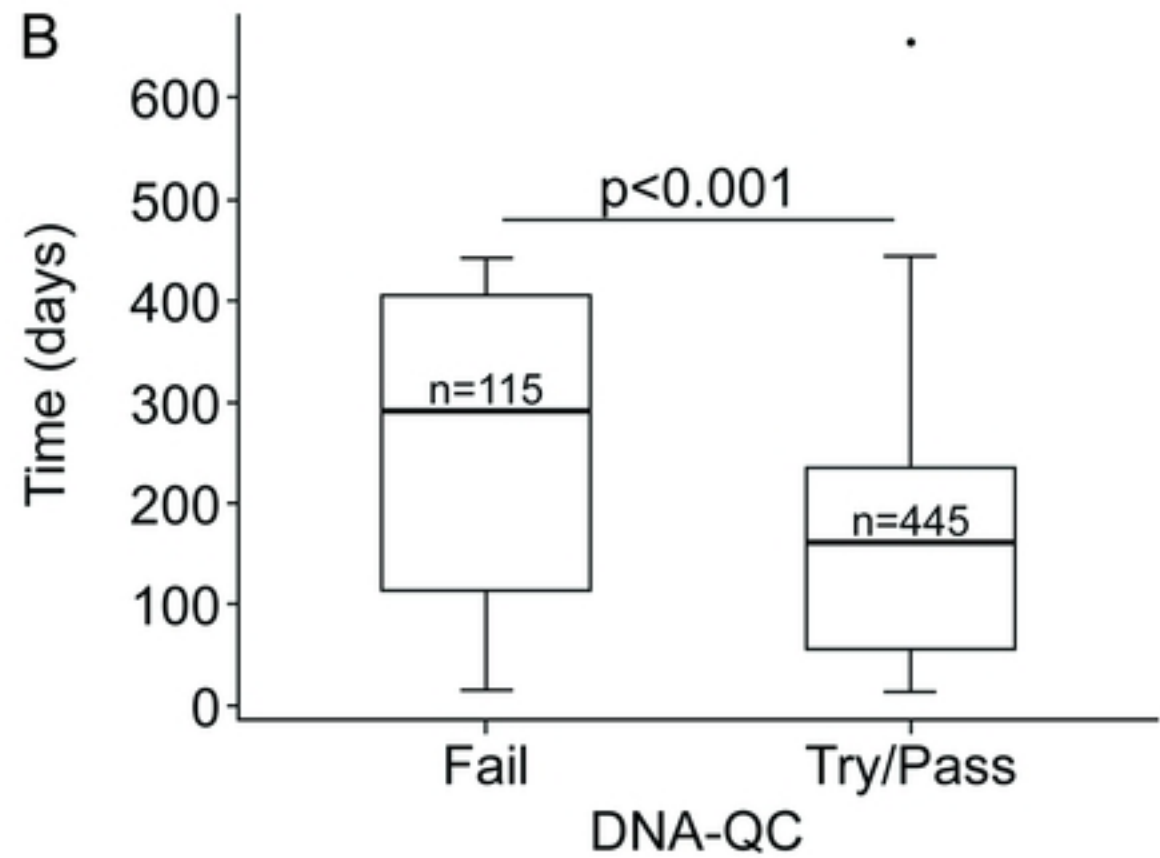
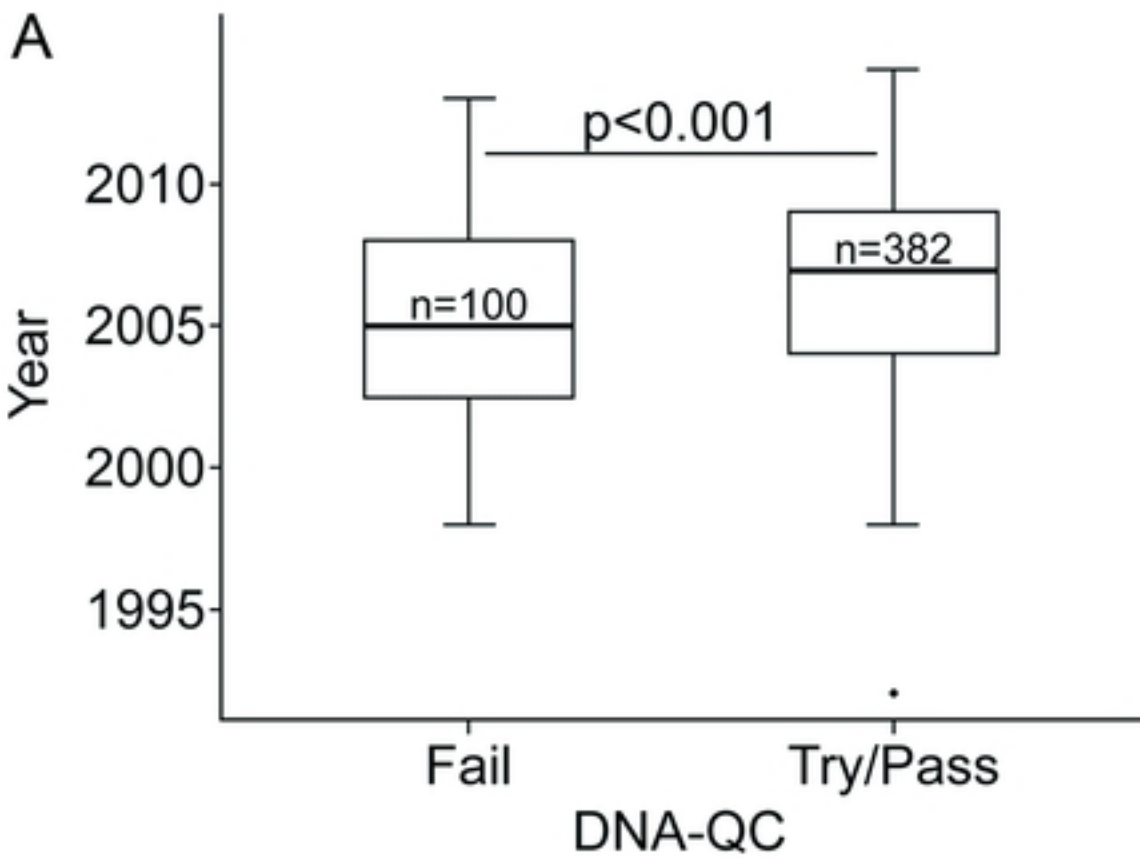


Fig3

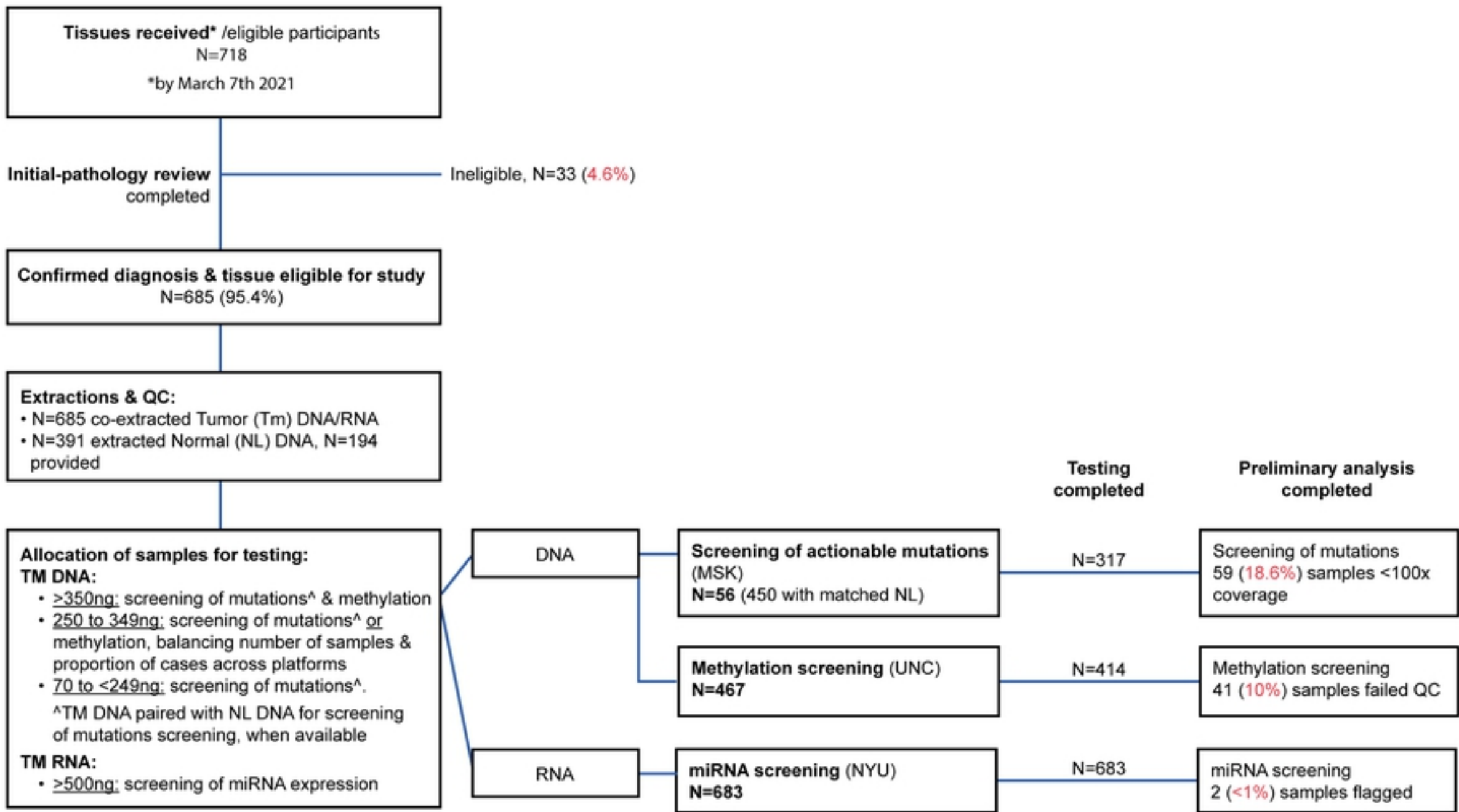


Fig4

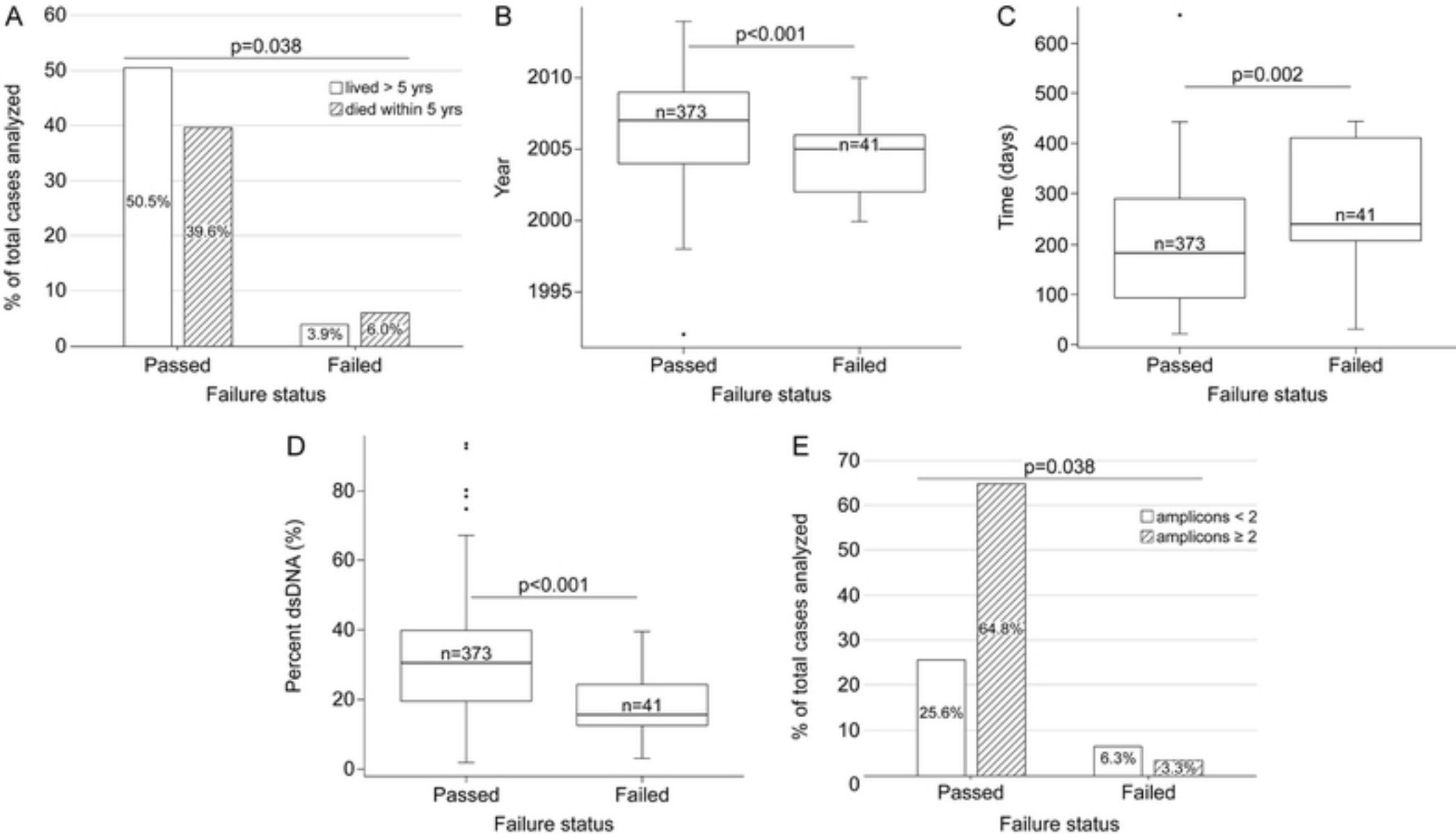


Fig5