

1 **Meningococcal vaccination in adolescents and adults induces bactericidal activity against hyperinvasive**
2 **complement-resistant meningococcal isolates**

3

4 Milou Ohm¹, Janine J. Wolf¹, Debbie M. van Rooijen¹, Linda Visser¹, Willem R. Miellet^{1,2}, Rob Mariman¹,
5 Krzysztof Trzcinski², Anne-Marie Buisman¹, Fiona R.M. van der Klis¹, Guy A.M. Berbers¹, Mirjam J. Knol¹,
6 Nina M. van Sorge^{3,4,5}, Gerco den Hartog¹

7 1. Centre for Infectious Disease Control, National Institute for Public Health and the Environment (RIVM), Bilthoven, the
8 Netherlands

9 2. Department of Pediatric Immunology and Infectious Diseases, Wilhelmina Children's Hospital, University Medical
10 Center Utrecht, Utrecht, The Netherlands

11 3. Department of Medical Microbiology and Infection Prevention, Amsterdam UMC location University of Amsterdam,
12 Amsterdam, The Netherlands

13 4. Netherlands Reference Laboratory for Bacterial Meningitis, Amsterdam UMC location AMC, Amsterdam, The
14 Netherlands

15 5. Amsterdam Institute for Infection and Immunity, Infectious Diseases, Amsterdam, The Netherlands

16

17 **Keywords:** invasive meningococcal disease, hyperinvasive lineages, complement-mediated killing, clonal
18 complex, meningococcal vaccination

19 **Running title:** Killing of hyperinvasive meningococci

20 **Short summary:** Meningococcal isolates of hyperinvasive lineages are resistant to complement-mediated
21 killing but vaccine-induced antibodies effectively kill these invasive isolates.

22

23 **Corresponding author:** dr. Gerco den Hartog, Centre for Infectious Disease Control Netherlands, National
24 Institute for Public Health and the Environment (RIVM), Netherlands, gerco.den.hartog@rivm.nl

25 **Alternate corresponding author:** Milou Ohm, Centre for Infectious Disease Control Netherlands, National
26 Institute for Public Health and the Environment (RIVM), Netherlands, milou.ohm@rivm.nl

27 **ABSTRACT**

28 **Background**

29 Complement-mediated killing is critical in the defense against meningococci. During a recent outbreak of
30 invasive meningococcal serogroup W disease (IMD-W) in the Netherlands, the predominant isolates belonged
31 to clonal complex (cc) 11, which may suggest a role for cc11-associated traits in complement resistance. We
32 investigated complement resistance of invasive and carriage meningococcal isolates of different serogroups and
33 lineages. In addition, we investigated whether vaccine-induced antibodies can overcome resistance to
34 complement-mediated killing.

35 **Methods**

36 We analyzed IMD isolates (n=56) and carriage isolates (n=20) of different serogroups and clonal lineages in the
37 serum bactericidal antibody (SBA) assay using pooled serum from unvaccinated and vaccinated individuals.
38 Furthermore, we determined meningococcal serogroup W geometric mean titers (GMTs) and protection levels
39 with the routinely-used non-cc11 isolate and hyperinvasive cc11 isolates using individual serum samples from
40 adolescents and adults 5 years postvaccination.

41 **Results**

42 The hyperinvasive IMD isolates showed high variation in their resistance to complement-mediated killing when
43 pooled serum from unvaccinated individuals was used (median 96, range 2-1,536). When pooled sera from
44 vaccinated individuals was used, all isolates were killed. The minimum spanning tree revealed moderate?
45 clustering of serogroup and cc, while complement resistance did not. While a significantly lower GMT was
46 observed against cc11 meningococcal serogroup W (MenW) compared to a non-cc11 MenW isolate in
47 vaccinated adults but not in adolescents, we found no differences in the proportion protected between these
48 isolates.

49 **Conclusions**

50 These data show that vaccine-induced antibodies are effectively inducing complement-mediated killing of
51 complement-resistant hyperinvasive and carriage meningococcal isolates.

52 INTRODUCTION

53 The Gram-negative diplococcus *Neisseria meningitidis* - also known as meningococcus - is a human-specific
54 bacterium that colonizes the upper respiratory tract (1). In rare cases, it behaves as an opportunistic pathogen (2)
55 causing invasive meningococcal disease (IMD) often presenting as meningitis or sepsis (3). The reason why one
56 person is an asymptomatic carrier while another becomes severely ill remains largely unknown. IMD mainly
57 affects otherwise healthy individuals, although complement deficiencies and splenic dysfunction/asplenia are
58 known to predispose to IMD. In addition, individuals with these predispositions often show a reduced immune
59 response to vaccination (4, 5).

60 The meningococcus has been endemic with several major outbreaks across the world (6). The most recent
61 outbreak in Europe was caused by IMD serogroup W (IMD-W). The highest incidence rates were observed in
62 the United Kingdom and the Netherlands, but an increased number of IMD-W cases was observed in most
63 European countries. In the Netherlands, IMD-W incidence rates up to 1.2 per 100,000 were reported in 2018 –
64 in contrast to rates below 0.05 per 100,000 before the outbreak in 2010-2014 – and an unusually high case
65 fatality rate of 26% was observed in 14-24 year-olds (7).

66 Characterization of IMD-W outbreak isolates showed a dominance of the hyperinvasive clonal complex (cc) 11
67 lineage (8). The cc11 lineage was also implicated in an outbreak among Hajj pilgrims that started in 2000 and
68 Hajj-associated outbreaks in the meningitis belt thereafter (9). Moreover, an IMD-W outbreak in South America
69 that emerged in 2003 and the IMD serogroup C (IMD-C) outbreak in Europe in early '00 were both dominated
70 by cc11 lineages (10, 11). However, other lineages such as cc23 and cc41/44 also contribute to epidemics and
71 hyperendemic situations (12).

72 The first line of defense against meningococci is provided by the mucosal barrier. In the rare event of the
73 bacterium passing the mucosal barrier, the complement system is an important component of the innate immune
74 system that is able to quickly eliminate invading bacteria (13). The complement system plays a major role in
75 preventing IMD, exemplified by the fact that deficiencies in components of its terminal pathway are associated
76 with recurrent *N. meningitidis* infection. Complement can be activated by bacterial surfaces, however, many
77 bacterial pathogens including *N. meningitidis* have acquired mechanisms to evade complement-mediated killing.
78 One of the most well-known is binding of factor H by the factor H binding protein (fHbp) to inhibit activation of
79 the alternative complement pathway through C3 (14). Serogroup-specific antibodies can induce complement-
80 mediated killing of meningococci and overcome these pathogenic immune-evasion mechanisms (15).

81 Antibodies against surface proteins including porins may be acquired naturally following colonization and may
82 add to bactericidal activity of serum (16).

83 Although the importance of specific lineages is recognized in epidemics, little is known on how it relates to
84 resistance to complement-mediated killing. We aimed to assess whether IMD isolates with distinct
85 polysaccharide capsules and belonging to diverse ccs differ in their intrinsic resistance to complement-mediated
86 killing using sera from unvaccinated individuals. Furthermore, we investigated to what extent antibodies
87 induced by a MenACWY-TT vaccine are able to overcome potential complement resistance of hyperinvasive
88 meningococcal isolates.

89 **METHODS**

90 **Isolate collection**

91 Invasive meningococcal isolates (n=56) were selected to represent diverse clinical backgrounds, serogroups and
92 lineages (Table 1). IMD is a notifiable disease in the Netherlands and invasive isolates are typed by the National
93 Reference Laboratory for Bacterial Meningitis (NRLBM), Amsterdam, the Netherlands. Isolates selected for
94 this study were collected between 2001 and 2018 and were serogrouped by Ouchterlony gel diffusion (17).
95 Clinical background information (Supplementary Table 1) was collected through the national surveillance
96 system for IMD in the Netherlands (18). Since MenA is not prevalent in the Netherlands, the selection was
97 restricted to serogroup C, W and Y. In addition, a diverse selection of meningococcal serogroup CWY and
98 unencapsulated (cnl) carriage isolates (serogrouped with Meningococcus Agglutination Sera [Oxoid®]) of
99 varying cc (n=20) were included from a carriage study among students performed in the Netherlands in 2018
100 (19) (Table 1).

101

102 **Serum bactericidal antibody assay**

103 The serum bactericidal antibody (SBA) assay was performed using pooled serum as well as individual sera and
104 baby rabbit complement as complement source (20, 21). The serum pools consisted of sera from 1)
105 unvaccinated adults and 2) adolescents and young adults five years after a single dose of the MenACWY-TT
106 vaccine (Supplementary Table 2) (22, 23). We determined the resistance to killing of invasive and carriage
107 isolates in the absence (serum pool 1) and presence (serum pool 2) of vaccine-induced antibodies. A detailed
108 description of the assay can be found in Supplementary Information. Briefly, all tested isolates were grown on
109 gonococcal (GC)-agar plates at 37°C and 5% CO₂ and harvested at exponential growth phase. The SBA titer was
110 determined by plating serial two-fold dilutions of serum on Colombia blood agar plates. When the SBA titer of
111 the serum pool fell below 4, i.e. the isolate was not killed in a serum dilution of 1:2, we considered the isolate to
112 be highly resistant to complement-mediated killing. If the titer exceeded the limit of quantitation (titer
113 $\geq 262,144$), i.e. the bacterium lacked resistance to complement-mediated killing entirely, we assigned a titer of
114 262,144. The SBA titer of the serum pool was assessed with the average of two independent experiments
115 performed in duplicate. When the two independent measurements differed by more than two dilutions,
116 additional replicates were performed in order to obtain a reproducible titer.

117 The individual sera from adolescents (n=54) and middle-aged adults (n=50) were collected five years after a
118 single dose of MenACWY-TT in two clinical studies (NL4518 and NL7735) (22). The sera were tested with the
119 default MenW non-cc11 target isolate (cc22, strain MP01240070) and the default MenW cc11 target isolate
120 (2160326) used in our laboratory for SBA assays. Additionally, we tested a randomly selected subset (n=22) of
121 sera from the adolescent cohort to determine the SBA titer against three additional serogroup W cc11 isolates to
122 explore the variation in resistance to killing among different isolates belonging to this specific cc (isolate #30,
123 isolate #35, isolate #49; Supplementary Table 1 and Supplementary Table 3). The internationally accepted
124 correlate of protection (SBA titer ≥ 8) was used for analysis of the individual sera, with the bactericidal titer
125 defined as the dilution of sera that yielded $\geq 50\%$ killing after 60 minutes incubation (23-25). A value of 2 was
126 assigned when the titer fell below the cut-off of the assay (titer < 4).

127

128 **Phylogenetic analyses**

129 We used core genome multilocus sequence typing (cgMLST) to construct a minimum spanning tree in order to
130 explore possible phylogenetic relationships for invasiveness of various genetic lineages. Whole genome
131 sequencing (WGS) was performed for all *N. meningitidis* isolates included in this study. Genomic DNA was
132 extracted using Genelute Bacterial Genomic DNA kit (NA2120, Sigma). Libraries were prepared using Illumina
133 DNA prep kit (20018705, Illumina) and paired-end sequenced (2x150 bp) on an Illumina NextSeq platform
134 (Illumina), following the manufacturer's protocols. Read quality analysis and *de novo* assembly was performed
135 with the Juno-assembly v2.0.2 pipeline (24). Briefly, fastq quality assessment and filtering were performed
136 using FastQC and FastP. Genomes were assembled using SPAdes and curated with QUAST, CheckM and
137 Bbtools. Subsequently, isolates were typed with MLST v2.19.0 (25) as well as chewBBACA (v2.8.5) (26) for
138 the 1605 gene loci included in the Neisseria cgMLST scheme from pubMLST (27). cgMLST data were used to
139 construct a minimum spanning tree with GrapeTree (v2.1) (28). *In silico* capsule typing was performed as
140 described by Marjuki et al. (29).

141

142 **Statistical analyses**

143 Statistical analyses were performed using GraphPad Prism v9 and SPSS Statistics v28. Differences in log-
144 transformed SBA titers between serogroups for the different serum pools were tested with a mixed-effect

145 analysis for paired data with Sidak's correction for multiple comparisons. Differences in log-transformed SBA
146 titers between the different clinical manifestations were determined with a Kruskal-Wallis test with Dunn's
147 multiple comparisons correction. The interaction between serogroup and cc with log-transformed SBA titer as
148 dependent variable was investigated with a generalized linear model (GLM). We determined the geometric
149 mean titers (GMTs) per age group of the individual sera for serogroup-specific SBA titers. Differences between
150 age groups in log-transformed SBA titers of the individual sera were determined with a Wilcoxon matched-pairs
151 signed rank test for paired data using Pratt's method to account for tied values within a sample. Differences in
152 proportions of protected individuals following vaccination were determined by a Chi-square or Fisher's exact
153 test as appropriate. Differences between the GMT of a subset of individual sera for different MenW cc11
154 isolates were compared with a Friedman's ANOVA test with Dunn's multiple comparisons correction. A p-
155 value of <0.05 was considered statistically significant.

156 RESULTS

157 Description of selected isolates

158 Characteristics for all tested meningococcal isolates with details on the serogroup and source of isolation
159 including clinical background of patients for all invasive isolates are summarized in Table 1 (Supplementary
160 Table 1: data per isolate). For the collection of invasive isolates, the median age of patients was 45 years (range
161 0-79). Meningitis was the most commonly reported clinical manifestation (23/56, 41%). Invasive isolates
162 causing clinical manifestations such as pneumonia and arthritis were also included in the selection. Half of the
163 invasive isolates belonged to serogroup W (28/56, 50%) of which 18 (64%) and 6 (21%) belonging to cc11 and
164 cc22 respectively. Also, the majority of MenC isolates belonged to cc11 (10/17, 59%), while there was no
165 MenY cc11 available for inclusion. Among MenY isolates, cc23 was the primary cc (6/11, 55%), followed by
166 cc167 (2/11, 18%). Non-groupable isolates were identified among the carriage isolates.

167

168 Bacterial killing by pooled serum from unvaccinated and vaccinated individuals

169 We found a significant difference ($p < 0.0001$) in SBA titers against invasive isolates between the serum pools of
170 unvaccinated and vaccinated individuals (Figure 1A). In the presence of vaccine-induced antibodies, all isolates
171 (invasive and carriage) were killed. All carriage isolates except for one were killed by complement when
172 exposed to the pool of serum from unvaccinated individuals. For 8 out of 20 (40%) carriage isolates a titer
173 above the limit of quantitation (≥ 262144) was determined (Figure 1A). Seventeen out of 56 (30%) invasive
174 isolates were highly resistant to complement-mediated killing and survived in the presence of high serum
175 concentrations from unvaccinated individuals. The majority of resistant isolates belonged to serogroup W (13
176 out of 17, 76%) which also showed the lowest SBA GMTs, followed by MenY (Figure 1B). In contrast to
177 MenW and MenY isolates, all MenC isolates showed limited resistance against the pool of serum from
178 unvaccinated individuals. A significant difference was found between SBA titers determined with serum from
179 unvaccinated individuals for carriage isolates compared with invasive isolates that caused sepsis ($p = 0.01$) or
180 resulted in death ($p = 0.04$), but not for meningitis, pneumonia or arthritis (Figure 1C). However, if the non-
181 resistant unencapsulated cnl isolates were excluded from the analyses, the significant differences between
182 isolates causing no symptoms and invasive isolates causing the various clinical manifestations disappeared. No
183 trend regarding the age of the patient was observed among resistant isolates. To identify a possible relation
184 between complement resistance and ccs, data were plotted according to the isolate's cc (Figure 2). All ccs

185 showed a wide variation in SBA titers in absence of vaccine-induced antibodies (Figure 2A), which reduced
186 after vaccination with no evidence for difference between ccs after vaccination (Figure 2B). GLM revealed that
187 serogroup ($p<0.001$) and cc ($p=0.011$) of invasive isolates associated with SBA titers in absence but not in
188 presence of vaccine-induced antibodies.

189

190 **Phylogenetics**

191 In order to explain the observed differences in complement resistance, we performed whole genome sequencing
192 (WGS) and core genome multilocus sequence typing (cgMLST) of the isolates. No apparent clustering was
193 observed for the source of isolation (invasive of carriage) (Figure 3A). Despite heterogeneity within serogroups
194 and ccs, several serogroups and cc subclusters in close genetic distance were observed (Figure 3B). Although
195 overall classes of SBA did not cluster, the cgMLST analyses revealed clustering of invasive MenW cc11 as well
196 as cc22 isolates with medium to high resistance to killing, while invasive MenC cc11 isolates clustered with low
197 to no resistance to killing. The results for non-cc11 isolates (including MenY isolates) did not reveal any
198 clustering other than the already established separation based on serogroup.

199

200 **Serum bactericidal titers in vaccinated individuals**

201 To test the degree of individual protection (SBA titer ≥ 8) to cc11 MenW following vaccination, a MenW cc11
202 isolate and a MenW non-cc11 isolate were exposed to individual serum samples of adolescents ($n=54$) and
203 adults ($n=50$) five years after MenACWY vaccination. A slightly higher GMT ($p=0.03$) was detected against the
204 MenW non-cc11 isolate compared to the selected MenW cc11 isolate in adults but not in adolescents (Figure 4).
205 However, the proportion of adults protected against both MenW isolates was similar (71% versus 66% with
206 SBA titer ≥ 8 for the laboratory isolate and clinical cc11 isolate, respectively). In a randomly selected subset of
207 adolescents ($n=22$), we found either similar (isolate #35 and #49) or higher (isolate #30, $p=0.004$) GMTs to the
208 additionally tested MenW cc11 isolates in comparison to the non-cc11 isolate (Supplementary Table 3).

209 **DISCUSSION**

210 In this study, we determined the resistance to complement-mediated killing of hyperinvasive clinical
211 meningococcal isolates, and how this may be explained by the clonal complex. Our data showed that clinical
212 isolates more often show resistance to complement-mediated killing compared to carriage isolates. Vaccine-
213 induced antibodies overcome the resistance to killing of hyperinvasive meningococcal isolates. Hyperinvasive
214 lineages with a specific cc were found to be in close genetic relationship. Five years postvaccination, vaccine-
215 induced antibodies resulted in slight reduced SBA titers to MenW cc11 but not in a difference in the proportion
216 of individuals with a SBA titer above the protective cut-off of 8.

217

218 In the presence of vaccine-induced antibodies, all tested isolates belonging to hyperinvasive lineages were
219 killed. Since vaccination targets the polysaccharide capsule, which is largely independent of the clonal complex-
220 associated genes, we did not expect a link between virulence and ccs when vaccine-induced antibodies were
221 present. Epidemiological data previously suggested vaccine effectiveness against invasive isolates (30), of
222 which we now provide mechanistic proof. While some ccs are implicated in IMD, others are rarely invasive and
223 there is large heterogeneity between isolates belonging to the same cc. Within the invasive ccs, classes of SBA
224 titers did not cluster. Yet, MenW cc11 isolates showed high resistance to killing while MenC cc11 isolates did
225 not. The difference between serogroups might be explained by the colonization history of donors, with
226 naturally-acquired antibodies in the serum from unvaccinated individuals (due to historical circulation of MenC
227 in the Netherlands (31)) inducing bactericidal activity against MenC. Possibly, these antibodies – which might
228 be targeted against the capsule but also other surface antigens – overcome the resistance to killing. Furthermore,
229 it has previously been described that capsular polysaccharides are heterogeneous in their activation of the
230 alternative pathway of complement, which may contribute to differences between serogroups in pathogenesis
231 (32). Since isolates that belong to a hypervirulent cc also circulate through the population (33), it is not
232 surprising that we also found one carriage isolate to be resistant to complement-mediated killing with pooled
233 serum from unvaccinated individuals.

234

235 Invasiveness of meningococci is thought to be determined – at least partly – by a combination of genetic
236 characteristics of both the bacterium and the host (34, 35). Some ccs are known to be overrepresented in disease
237 isolates, yet the STs itself are not necessarily involved in virulence. Virulence was previously found to be

238 associated with the combination of cell surface antigens and the polysaccharide capsule, which is an essential
239 antigen shielding the bacterium from host immunity but alone insufficient to confer full virulence (36). Evasion
240 strategies involve several virulence factors such as the polysaccharide capsule, as well as fHbp, PorA, PorB and
241 NspA next to some other molecules and factors involved in biofilm formation (13). In this study, we used baby
242 rabbit complement instead of human complement and therefore we could not investigate the four mentioned
243 proteins – all related to factor H binding - above. Factor H binding protein – involved in regulation of the
244 alternative pathway by inactivating C3 convertase - is species-specific and rabbit factor H does not bind to the
245 surface of the meningococcal bacterium. Nevertheless, resistance varied among the different tested lineages
246 which could be due to the combination of genes not reflected by the ST of each isolate (37) or by other bacterial
247 determinants such as genes involved in bacterial metabolism could play a role in invasiveness (38). A genome-
248 wide association analysis could reveal *Neisseria meningitidis* pathogenicity genes, but our study was not
249 powered for this type of analysis. Further research into the link between ccs and virulence factors and the
250 association with bactericidal activity might elucidate how hyperinvasive lineages can evade the immune system.

251

252 We found a significant difference between SBA titers in individual serum samples from adults but not in
253 adolescents for two unrelated serogroup W isolates – one cc11 and one non-cc11 – with a lower GMT against
254 the cc11 isolate (Figure 3). The proportion protected did not differ and most individuals unprotected (SBA titer
255 <8) for the cc11 isolate were also found to be unprotected for the non-cc11 isolate. Additionally tested cc11
256 MenW isolates showed comparable titers in a subset of participants (Supplementary Table 3). The waning of
257 long-term seroprotection after MenACWY vaccination is different between these age groups, as was previously
258 studied in those individuals as part of a larger cohort (22).

259

260 This study has some limitations. Firstly, we used baby rabbit complement for the functional antibody assays and
261 thus we might have yielded higher titers in the SBA assay than we would have with human complement.
262 Furthermore, variation in the individual's complement component - known as the complotype – alters
263 complement activity of each individual thereby affecting disease risk (39). Secondly, we selected the isolates
264 based on characteristics such as age, sex, clinical manifestation and diversity of ccs. The results cover diversity
265 in host-and genetic traits, but do not represent serogroup and lineage-specific epidemiology.

266

267 We conclude that vaccine-induced bactericidal antibodies allow bactericidal killing of a diverse set of clinically-
268 relevant serogroup C, W and Y (hyper)invasive lineages. Our results underline the importance of use of a
269 meningococcal vaccination to provide protection against hyperinvasive lineages during an outbreak or
270 hyperendemic situation.

271 **NOTES**

272 **Funding**

273 This project has received funding from the European Union’s Horizon 2020 research and innovation programme
274 under the Marie Skłodowska-Curie grant agreement [No. 835433], the work was supported by the Dutch
275 Ministry of Health, Welfare and Sport.

276

277 **Acknowledgements**

278 We thank all involved lab technicians and Boas van der Putten from the NRLBM for their contribution to
279 sample processing and analyses.

280

281 **Author contributions**

282 M.O. and G.d.H. conceived and designed the study. M.J.K and N.M.v.S. were involved in data collection.
283 G.A.M.B. and A.M.B. have supervised the longitudinal vaccination studies providing the serum samples. M.O.,
284 J.J.W. and D.M.v.R performed the serological analyses. L.V. and W.R.M., R.M. and K.T. contributed analytical
285 tools and were involved in the genetic analyses. M.O., L.V. and G.d.H. interpreted and verified the data and
286 made the figures. M.O. and G.d.H. and drafted the manuscript. All authors interpreted the data, critically
287 reviewed the manuscript, and approved the final version.

288

289 **Potential conflicts of interest**

290 K.T. received funds for an unrestricted research grant from GlaxoSmithKline (GSK) Biologicals SA,
291 consultation fees, fees for participation in advisory boards, speaking fees and funds for unrestricted research
292 grants from Pfizer, fees for participating in advisory boards and funds for unrestricted research grant from
293 Merck Sharp and Dohme (MSD), all paid directly to his home institution and all outside the submitted work.
294 N.M.v.S declares grants from GSK and MSD outside the submitted work. All other authors report no potential
295 conflicts of interest.

296 **REFERENCES**

- 297 1. Stephens DS. Biology and pathogenesis of the evolutionarily successful, obligate human
298 bacterium *Neisseria meningitidis*. *Vaccine*. 2009;27:B71-B7.
- 299 2. Moxon ER, Jansen VAA. Phage variation: understanding the behaviour of an accidental
300 pathogen. *Trends in microbiology*. 2005;13(12):563-5.
- 301 3. Caugant DA, Maiden MC. Meningococcal carriage and disease--population biology and
302 evolution. *Vaccine*. 2009;27 Suppl 2:B64-70.
- 303 4. Balmer P, Falconer M, McDonald P, Andrews N, Fuller E, Riley C, et al. Immune response to
304 meningococcal serogroup C conjugate vaccine in asplenic individuals. *Infection and immunity*.
305 2004;72(1):332-7.
- 306 5. Meerveld-Eggink A, de Weerd O, de Voer RM, Berbers GA, van Velzen-Blad H, Vlaminckx BJ,
307 et al. Impaired antibody response to conjugated meningococcal serogroup C vaccine in asplenic
308 patients. *European journal of clinical microbiology & infectious diseases : official publication of the*
309 *European Society of Clinical Microbiology*. 2011;30(5):611-8.
- 310 6. Pace D, Pollard AJ. Meningococcal disease: clinical presentation and sequelae. *Vaccine*.
311 2012;30 Suppl 2:B3-9.
- 312 7. Pluijmaekers A, de Melker H. The National Immunisation Programme in the Netherlands.
313 Surveillance and developments in 2020-2021. Het Rijksvaccinatieprogramma in Nederland
314 Surveillance en ontwikkelingen in 2020-2021: Rijksinstituut voor Volksgezondheid en Milieu RIVM;
315 2021.
- 316 8. Knol MJ, Hahné SJM, Lucidarme J, Campbell H, de Melker HE, Gray SJ, et al. Temporal
317 associations between national outbreaks of meningococcal serogroup W and C disease in the
318 Netherlands and England: an observational cohort study. *Lancet Public Health*. 2017;2(10):e473-e82.
- 319 9. Lucidarme J, Hill DM, Bratcher HB, Gray SJ, du Plessis M, Tsang RS, et al. Genomic resolution
320 of an aggressive, widespread, diverse and expanding meningococcal serogroup B, C and W lineage.
321 *The Journal of infection*. 2015;71(5):544-52.
- 322 10. Abad R, Lopez EL, Debbag R, Vazquez JA. Serogroup W meningococcal disease: global spread
323 and current affect on the Southern Cone in Latin America. *Epidemiology and infection*.
324 2014;142(12):2461-70.
- 325 11. Safadi MA, Bettinger JA, Maturana GM, Enwere G, Borrow R, Global Meningococcal I.
326 Evolving meningococcal immunization strategies. *Expert review of vaccines*. 2015;14(4):505-17.
- 327 12. Watkins ER, Maiden MC. Persistence of hyperinvasive meningococcal strain types during
328 global spread as recorded in the PubMLST database. *PloS one*. 2012;7(9):e45349.
- 329 13. Lewis L, Ram S. Meningococcal disease and the complement system. *Virulence*. 2013;5.
- 330 14. Principato S, Pizza M, Rappuoli R. Meningococcal factor H binding protein as immune
331 evasion factor and vaccine antigen. *FEBS Letters*. 2020;594(16):2657-69.
- 332 15. Frasch CE, Borrow R, Donnelly J. Bactericidal antibody is the immunologic surrogate of
333 protection against meningococcal disease. *Vaccine*. 2009;27 Suppl 2:B112-6.
- 334 16. Pollard AJ, Frasch C. Development of natural immunity to *Neisseria meningitidis*. *Vaccine*.
335 2001;19(11):1327-46.
- 336 17. Ouchterlony O. Antigen-antibody reactions in gels. *Acta Pathol Microbiol Scand*.
337 1949;26(4):507-15.
- 338 18. Brandwagt DAH, van der Ende A, Ruijs WLM, de Melker HE, Knol MJ. Evaluation of the
339 surveillance system for invasive meningococcal disease (IMD) in the Netherlands, 2004–2016. *BMC*
340 *infectious diseases*. 2019;19(1):860.
- 341 19. Miellet WR, Mariman R, Pluister G, de Jong LJ, Grift I, Wijkstra S, et al. Detection of *Neisseria*
342 *meningitidis* in saliva and oropharyngeal samples from college students. *Sci Rep*. 2021;11(1):23138.
- 343 20. Goldschneider I, Gotschlich EC, Artenstein MS. Human immunity to the meningococcus. II.
344 Development of natural immunity. *The Journal of experimental medicine*. 1969;129(6):1327-48.

- 345 21. Maslanka SE, Gheesling LL, Libutti DE, Donaldson KB, Harakeh HS, Dykes JK, et al.
346 Standardization and a multilaboratory comparison of *Neisseria meningitidis* serogroup A and C
347 serum bactericidal assays. The Multilaboratory Study Group. *Clinical and diagnostic laboratory*
348 *immunology*. 1997;4(2):156-67.
- 349 22. Ohm M, van Rooijen DM, Bonačić Marinović AA, van Ravenhorst MB, van der Heiden M,
350 Buisman AM, et al. Different Long-Term Duration of Seroprotection against *Neisseria meningitidis* in
351 Adolescents and Middle-Aged Adults after a Single Meningococcal ACWY Conjugate Vaccination in
352 The Netherlands. *Vaccines (Basel)*. 2020;8(4).
- 353 23. van der Heiden M, Boots AMH, Bonacic Marinovic AA, de Rond LGH, van Maurik M,
354 Tcherniaeva I, et al. Novel Intervention in the Aging Population: A Primary Meningococcal Vaccine
355 Inducing Protective IgM Responses in Middle-Aged Adults. *Frontiers in immunology*. 2017;8(817).
- 356 24. Github Juno pipeline [Available from: [https://github.com/RIVM-](https://github.com/RIVM-bioinformatics/Juno_pipeline)
357 [bioinformatics/Juno_pipeline](https://github.com/RIVM-bioinformatics/Juno_pipeline).
- 358 25. Github MLST [Available from: <https://github.com/tseemann/mlst>.
- 359 26. Silva M, Machado MP, Silva DN, Rossi M, Moran-Gilad J, Santos S, et al. chewBBACA: A
360 complete suite for gene-by-gene schema creation and strain identification. *Microbial Genomics*.
361 2018;4(3).
- 362 27. Bratcher HB, Corton C, Jolley KA, Parkhill J, Maiden MCJ. A gene-by-gene population
363 genomics platform: de novo assembly, annotation and genealogical analysis of 108 representative
364 *Neisseria meningitidis* genomes. *BMC genomics*. 2014;15(1):1138.
- 365 28. Zhou Z, Alikhan NF, Sergeant MJ, Luhmann N, Vaz C, Francisco AP, et al. GrapeTree:
366 visualization of core genomic relationships among 100,000 bacterial pathogens. *Genome Res*.
367 2018;28(9):1395-404.
- 368 29. Marjuki H, Topaz N, Rodriguez-Rivera LD, Ramos E, Potts CC, Chen A, et al. Whole-Genome
369 Sequencing for Characterization of Capsule Locus and Prediction of Serogroup of Invasive
370 Meningococcal Isolates. *Journal of clinical microbiology*. 2019;57(3):e01609-18.
- 371 30. Ohm M, Hahné SJM, van der Ende A, Sanders EAM, Berbers GAM, Ruijs WLM, et al. Vaccine
372 impact and effectiveness of meningococcal serogroup ACWY conjugate vaccine implementation in
373 the Netherlands: a nationwide surveillance study. *Clinical Infectious Diseases*. 2021.
- 374 31. Bijlsma MW, Brouwer MC, Spanjaard L, van de Beek D, van der Ende A. A decade of herd
375 protection after introduction of meningococcal serogroup C conjugate vaccination. *Clinical infectious*
376 *diseases : an official publication of the Infectious Diseases Society of America*. 2014;59(9):1216-21.
- 377 32. Ram S, Lewis LA, Agarwal S. Meningococcal Group W-135 and Y Capsular Polysaccharides
378 Paradoxically Enhance Activation of the Alternative Pathway of Complement*. *Journal of Biological*
379 *Chemistry*. 2011;286(10):8297-307.
- 380 33. Ravenhorst MB, Bijlsma MW, van Houten MA, Struben VM, Anderson AS, Eiden J, et al.
381 Meningococcal carriage in Dutch adolescents and young adults; A cross-sectional and longitudinal
382 cohort study. *Clinical microbiology and infection : the official publication of the European Society of*
383 *Clinical Microbiology and Infectious Diseases*. 2017.
- 384 34. Stabler RA, Marsden GL, Witney AA, Li Y, Bentley SD, Tang CM, et al. Identification of
385 pathogen-specific genes through microarray analysis of pathogenic and commensal *Neisseria*
386 species. *Microbiology (Reading)*. 2005;151(Pt 9):2907-22.
- 387 35. Brouwer MC, de Gans J, Heckenberg SG, Zwinderman AH, van der Poll T, van de Beek D. Host
388 genetic susceptibility to pneumococcal and meningococcal disease: a systematic review and meta-
389 analysis. *The Lancet Infectious diseases*. 2009;9(1):31-44.
- 390 36. Joseph B, Schwarz RF, Linke B, Blom J, Becker A, Claus H, et al. Virulence evolution of the
391 human pathogen *Neisseria meningitidis* by recombination in the core and accessory genome. *PLoS*
392 *one*. 2011;6(4):e18441.
- 393 37. Kugelberg E, Gollan B, Tang CM. Mechanisms in *Neisseria meningitidis* for resistance against
394 complement-mediated killing. *Vaccine*. 2008;26 Suppl 8(6):I34-I9.

- 395 38. Watkins ER, Maiden MC. Metabolic shift in the emergence of hyperinvasive pandemic
396 meningococcal lineages. *Sci Rep.* 2017;7:41126.
- 397 39. Harris CL, Heurich M, Cordoba SRd, Morgan BP. The complotype: dictating risk for
398 inflammation and infection. *Trends in Immunology.* 2012;33(10):513-21.
- 399

400 **Table 1. Characteristics of selected isolates.** cnl = capsule null locus; N/A = not applicable; *unspecified here,
 401 because of potentially identifying information. Notice that one patient may present with more than one clinical
 402 manifestation.

Isolation	Serogroup	Clonal complex	total (n)	Age, median (range)	Clinical manifestation				
					pneumonia	sepsis	meningitis	arthritis	unspecified
Disease n=56	C	8	2	2.5 (2-3)	0	0	2	0	1
		11	10	17.5 (0-72)	0	2	7	1	4
		other	4	50 (1-53)	0	2	2	0	0
		unknown	1	unspecified*	0	1	0	0	0
		total	17	19 (0-72)	0 (0%)	5 (29%)	11 (65%)	1 (6%)	5 (29%)
	W	11	18	43 (0-73)	3	7	4	2	3
		22	6	35 (1-79)	0	4	4	0	1
		other	2	63 (56-70)	0	0	0	1	1
		unknown	2	34 (0-68)	0	2	0	0	0
		total	28	43 (0-79)	3 (11%)	13 (46%)	8 (29%)	2 (7%)	5 (18%)
	Y	23	6	68 (18-78)	1	2	2	1	0
		167	2	45 (19-71)	0	0	2	0	0
		unknown	3	66 (16-70)	1	1	0	0	1
total		11	67 (16-78)	2 (18%)	3 (27%)	4 (36%)	1 (9%)	1 (9%)	
Carriage n=20	C	total	1	N/A	no symptoms				
	W	total	5	N/A	no symptoms				
	Y	total	10	N/A	no symptoms				
	cnl	total	4	N/A	no symptoms				

403

404 **FIGURE LEGENDS**

405 **Figure 1. Serum bactericidal antibody titers of invasive and carriage meningococcal isolates determined**
406 **with pooled serum from unvaccinated individuals and pooled serum from vaccinated individuals. Panel**
407 **A: all invasive and all carriage isolates for both serum pools, Panel B: invasive isolates per serogroup C,**
408 **W and Y for both serum pools, Panel C: SBA titers per clinical manifestation for the pool of serum from**
409 **unvaccinated individuals.** Statistical analyses performed with a mixed-effect analysis with Sidak's correction
410 for multiple comparison on log-transformed data. Geometric mean SBA titers with 95% confidence intervals are
411 shown in panel A and B for each group. SBA = serum bactericidal antibody; unvacc = tested with pool of serum
412 from unvaccinated individuals, vacc = tested with pool of serum from vaccinated individuals. *p<0.05; **
413 p<0.01; *** p<0.001; **** p<0.0001.

414

415 **Figure 2. Serum bactericidal antibody titers of invasive and carriage meningococcal isolates per clonal**
416 **complex determined with pooled serum from unvaccinated individuals (A) and pooled serum from**
417 **vaccinated individuals (B).** SBA = serum bactericidal antibody; cc = clonal complex. Geometric mean SBA
418 titers are shown for each clonal complex. For three isolates (n=1 for cc8 and n=2 for other), a result was
419 available for only one of the serum pools.

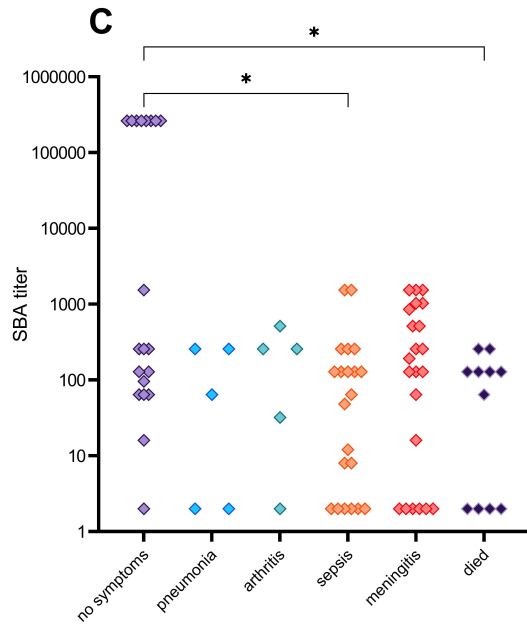
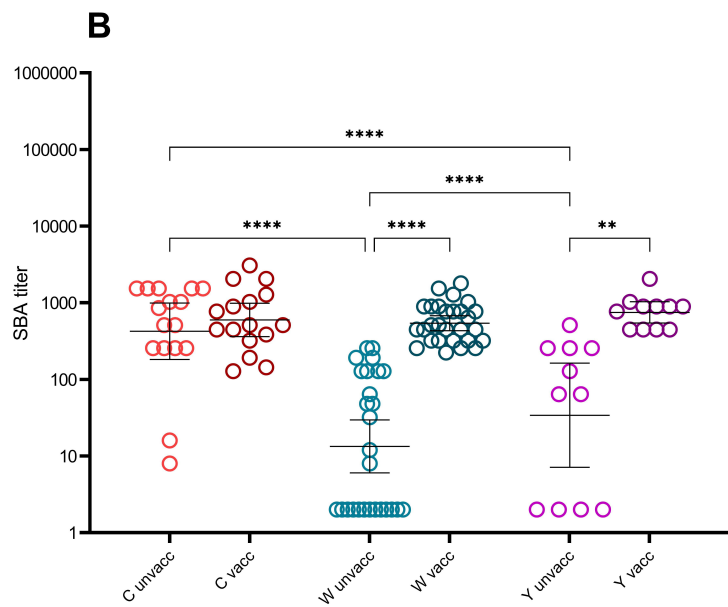
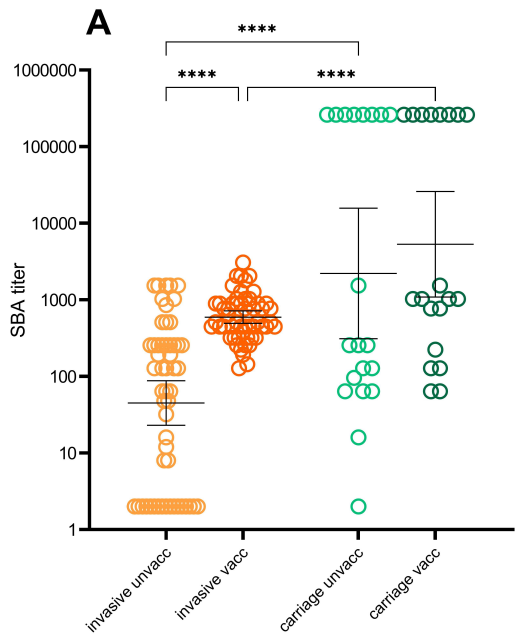
420

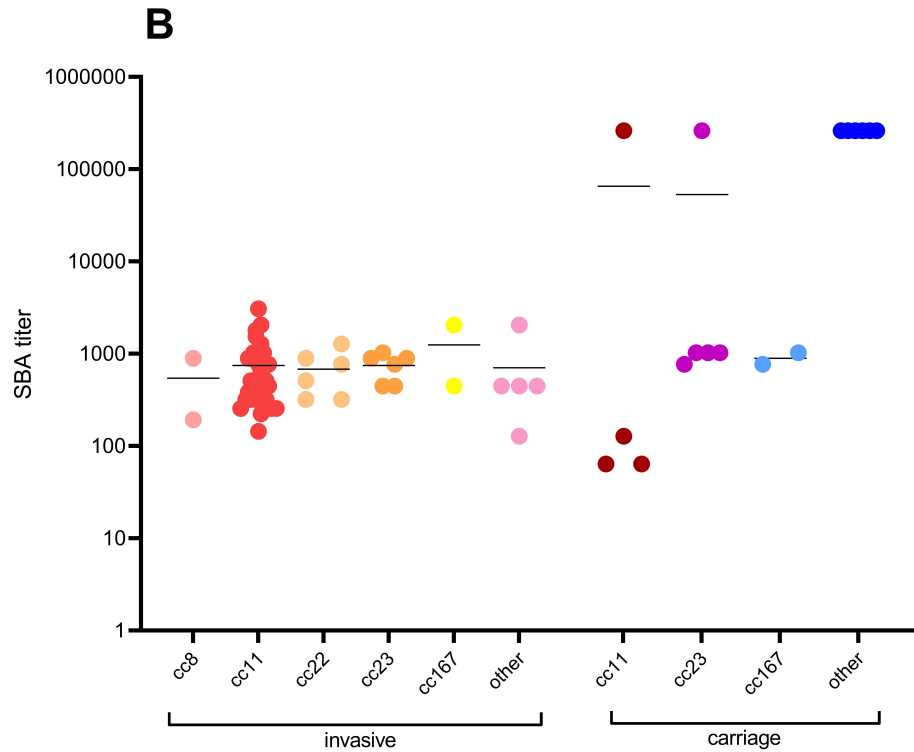
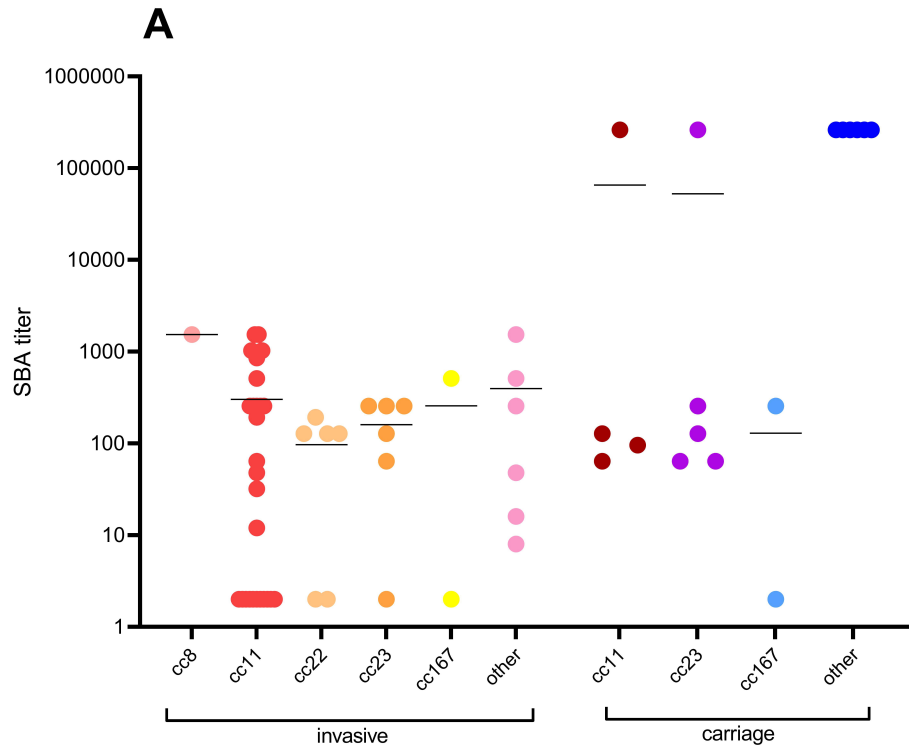
421 **Figure 3. Minimum spanning trees of cgMLST data per A) source of isolation B) serogroup and clonal**
422 **complex and C) serum bactericidal antibody (SBA) titer class* when tested with pooled serum of**
423 **unvaccinated individuals.** cc = clonal complex; WGS = whole genome sequencing; non-vac_binary = binary
424 SBA titer class tested with pooled serum of unvaccinated individuals. *The SBA titer class as shown in C was
425 assigned 0 (no to low resistance, in green) for a titer ≤ 128 and 1 (medium to high resistance, in red) for a titer
426 >128 . Every circle represents one isolate, the letter in the circle represents the serogroup. If a circle is white-
427 colored, data were not available. The scale of the branch length is shown on scale depicted in the left lower
428 corner.

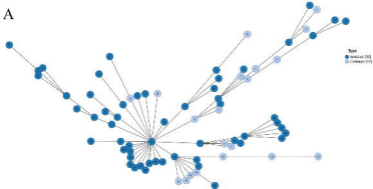
429

430 **Figure 4. Serum bactericidal antibody titers with geometric mean titers in individual serum samples from**
431 **vaccinated adolescents (n=54, red triangle) and adults (n=50 blue circle) against a serogroup W**

432 **laboratory non-cc11 isolate and a serogroup W hyperinvasive cc11 isolate.** * $p < 0.05$ as determined with a
433 Wilcoxon matched-pairs signed rank test using Pratt's method. Bold lines are geometric mean SBA titers with
434 95% confidence intervals.

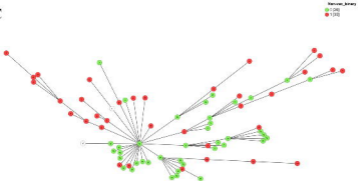




A

100

C



MenW

