

## **Elevated liver enzymes and bilirubin following SARS-CoV-2 infection in children under 10**

Ellen K. Kendall<sup>1#</sup>, Veronica R. Olaker<sup>1#</sup>, David C. Kaelber MD, PhD, MPH<sup>2</sup>, Rong Xu, PhD<sup>1\*</sup>, Pamela B. Davis MD, PhD<sup>3\*</sup>

1. Center for Artificial Intelligence in Drug Discovery, Case Western Reserve University School of Medicine, Cleveland, Ohio

2. The Center for Clinical Informatics Research and Education, The MetroHealth System, Cleveland, Ohio

3. Center for Community Health Integration, Case Western Reserve University School of Medicine, Cleveland, Ohio

# Contributed equally,

Corresponding Author:

Pamela B. Davis, MD, PhD

Sears Tower T402, Center for Community Health Integration, Case Western Reserve University  
10900 Euclid Avenue, Cleveland, OH 44106

Email: [pbd@case.edu](mailto:pbd@case.edu), Phone: 216-3684370

Rong Xu, PhD

Sears Tower T303, Center for Artificial Intelligence in Drug Discovery, Case Western Reserve University

10900 Euclid Avenue, Cleveland, OH 44106

Email: [rxx@case.edu](mailto:rxx@case.edu), Phone: 216-3680023

### **Abstract**

Recently, the Centers for Diseases and Control released a nationwide health alert about an increase in hepatitis cases of unknown origin in children, raising concern about potential sequelae of COVID-19 infection. In this study, we test whether there was increased risk of elevated serum liver enzymes and bilirubin following COVID-19 infection in children. We performed a retrospective cohort study on a nation-wide database of patient electronic health records (EHRs) in the US. The study population comprise 796,369 children between the ages of 1-10 years including 245,675 who had contracted COVID-19 during March 11, 2020 - March 11, 2022 and 550,694 who contracted non-COVID other respiratory infection (ORI) during the same timeframe.

Compared to children infected with other respiratory infections, children infected with COVID-19 infection were at significantly increased risk for elevated AST or ALT (hazard ratio or HR: 2.52, 95% confidence interval or CI: 2.03-3.12) and total bilirubin (HR: 3.35, 95% CI: 2.16-5.18). These results suggest acute and long-term hepatic sequelae of COVID-19 in pediatric patients. Further investigation is needed to clarify if post-COVID-19 related hepatic injury described in this study is related to the current increase in pediatric hepatitis cases of unknown origin.

### **Introduction**

COVID-19 infection has been associated with hepatic involvement in adults, often manifesting as elevated serum alanine aminotransferase (ALT) and aspartate aminotransferase (AST) levels during infection, as well as direct RNA viral detection in liver samples.<sup>1,2</sup> Early evidence from a study in India described 37 pediatric patients presenting with clinical signs of hepatitis after having COVID-19, but how COVID-19 affects the liver in pediatric patients remains unknown.<sup>3</sup> Recently, the Centers for Diseases and Control released a nationwide health alert about an increase in hepatitis cases of unknown origin in children, raising concern about potential sequelae of COVID-19 infection.<sup>4</sup> In this study, we test whether there was increased risk of elevated serum liver enzymes and bilirubin following COVID-19 infection in children.

## Methods

The TriNetX Analytics Platform was used for data analysis. TriNetX global health collaborative database is a large de-identified database representing over 75 healthcare organizations and 93 million patients across 14 countries and all 50 U.S. states. Studies using TriNetX in this way have been determined to be IRB exempt by the MetroHealth System IRB (Cleveland Ohio).

The study population included 796,369 children between the ages of 1-10 years and was divided into two cohorts. COVID-19 cohort (n = 245,675): with new COVID-19 infection recorded from March 11, 2020 - March 11, 2022. The control cohort (550,694): with non-COVID other respiratory infection (ORI) during the same timeframe. Exclusion criteria included patients with diagnoses of cancer, viral hepatitis, alpha-1-antitrypsin deficiency, and other diseases of the liver. Cohorts were propensity-score matched (1:1 using a nearest neighbor greedy matching) for age, race, ethnicity, pediatric BMI, overweight, and obesity (Table).

Risks of elevated AST ( $\geq 110$ ) or ALT ( $\geq 100$ ) and serum total bilirubin ( $\geq 2$ ) not previously documented in these patients were compared between the COVID-19 and ORI cohorts using hazard ratios (HR) and 95% confidence intervals (CI). Outcomes were reported at 1 month, 3 months, and 6 months following infection. All statistical analyses were conducted in TriNetX Analytics Platform. Details of cohort definitions and statistical analyses were described in eMethods.

## Results

After propensity-score matching, there were 245,161 patients in the COVID-19 cohort and 245,161 in the ORI control cohort (**Table 1**). From 1 day to 6 months after the index event, 269 patients in the COVID-19 cohort and 121 in the ORI cohort had AST  $\geq 110$  U/L or ALT  $\geq 100$  U/L (HR: 2.52, 95% CI: 2.03-3.12). 79 patients in the COVID-19 cohort and 27 in the ORI cohort had serum total bilirubin  $\geq 2$  mg/dL (HR: 3.35, 95% CI: 2.16-5.18) (**Figure 1**). Similar results were obtained comparing 1–4-year-old patients with COVID-19 infection vs ORI at 1 month, 3 months, and 6 months. The specific 1–4-year-old age group was selected, as this is an unvaccinated population and the peak age for hepatitis—as described in the CDC alert.

## Discussion

Following COVID-19 infection, there was a higher risk of elevated AST or ALT and total bilirubin at 1, 3, and 6 months in comparison to children infected with other respiratory

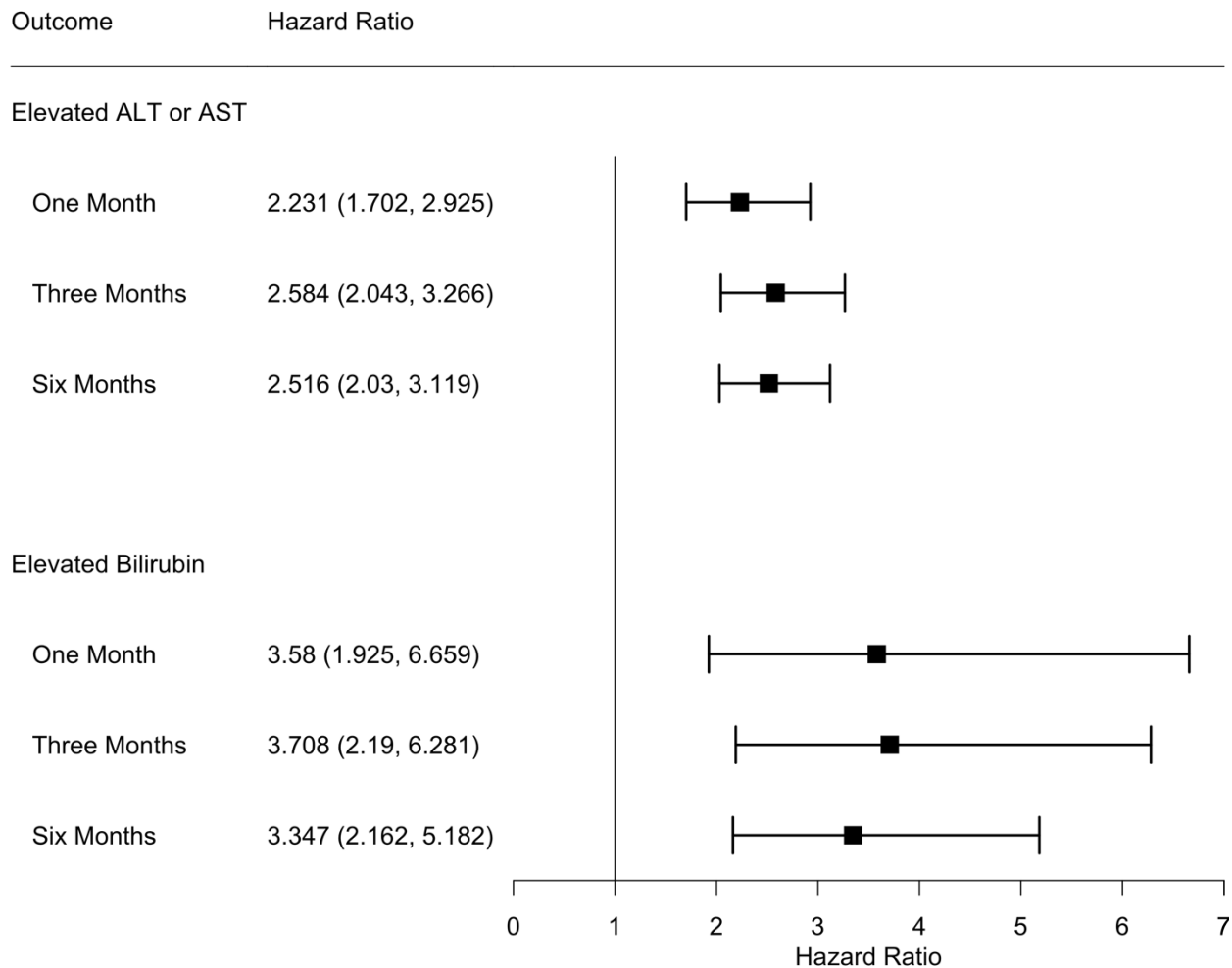
infections. These results suggest acute and long-term hepatic sequelae of COVID-19 in pediatric patients, raising concern for long term clinical outcomes following a COVID-19 related hepatic injury. Study limitations include potential biases due to the observational nature of this study, and the need to confirm these results in other datasets and populations. Further investigation is needed to clarify if post-COVID-19 related hepatic injury described in this study is related to the current increase in pediatric hepatitis cases of unknown origin.

**Table 1.** Characteristics of the study population before and after propensity-score matching

Characteristics	Before Matching			After Matching		
	COVID-19	ORI	SMD	COVID-19	ORI	SMD
Total number	245,675	550,694		245,161	245,161	
Current age, mean (SD), y	6.0 (+/- 3.1)	5.3 (+/- 3.0)	0.222	6.0 (+/- 3.1)	6.0 (+/- 3.1)	0.002
Age at index, mean (SD), y	5.1 (+/- 3.0)	4.4 (+/- 2.9)	0.243	5.1 (+/- 3.0)	5.1 (+/- 3.0)	0.001
Sex - female	114,954(46.8)	261,837(47.5)	0.015	114,773(46.8%)	115,203(47.0)	0.004
Sex - male	130,672(53.2)	288,782(52.4)	0.015	130,341(53.2)	129,923(53.0)	0.003
Ethnicity - Hispanic/Latinx	59,525(24.2)	90,193(16.4)	0.196	59,061(24.1)	59,556(24.3)	0.005
Ethnicity - Not Hispanic/Latinx	140,744(57.3)	294,765(53.5)	0.076	140,694(57.4)	140,181(57.2)	0.004
Ethnicity - Unknown	45,406(18.5)	165,736(30.1)	0.273	45,406(18.5)	45,424(18.5)	<0.001
Race - American Indian or Alaska Native	855(0.3)	2,295(0.4)	0.011	855(0.3)	795(0.3)	0.004
Race - Asian	6,808(2.8)	14,717(2.7)	0.006	6,800(2.8)	6,764(2.8)	0.001
Race - Black or African American	44,963(18.3)	87,405(15.9)	0.065	44,897(18.3)	44,509(18.2)	0.004
Race - Native Hawaiian or Other Pacific Islander	281(0.1)	798(0.1)	0.008	281(0.1)	242(0.1)	0.005
Race - Unknown	62,150(25.3)	177,877(32.3)	0.155	62,106(25.3)	62,655(25.6)	0.005
Race - White	130,618(53.2)	267,602(48.6)	0.092	130,222(53.1)	130,196(53.1)	<0.001
Overweight and Obesity	9,724(4.0)	16,103(2.9)	0.057	9,594(3.9)	9,640(3.9)	0.001
Body mass index [BMI] Pediatric	22,985(9.4)	70,988(12.9)	0.113	22,985(9.4)	22,998(9.4)	<0.001

**Figure 1.** Comparison of risks for elevated liver enzymes and bilirubin within 1, 3, 6 months following COVID-19 or non-COVID other respiratory infection (ORI) between propensity-score matching cohorts.

### Risk of elevated liver enzymes and bilirubin following COVID-19 infection vs ORI



*Concept and design:* PBD, RX, EKK, VRO

*Acquisition, analysis, or interpretation of data:* EKK, VRO, PBD, RX

*Drafting of the manuscript:* EKK, VRO

*Critical revision of the manuscript for important intellectual content:* RX, PBD

*Statistical analysis:* EKK, VO

*Obtained funding:* PBD, RX

*Administrative, technical, or material support:* PBD, RX, DCK

*Supervision:* PBD, DCK, RX

*Conflict of interest disclosures:* None

**Funding/Support:** This study was supported by grants AG057557, AG061388, AG062272, AG076649 from the National Institute on Aging, grant R01AA029831 from the National Institute on Alcohol Abuse and Alcoholism, grant UG1DA049435 from the National Institute on Drug Abuse, and grant 1UL1TR002548-01 from the Clinical and Translational Science Collaborative of Cleveland

**Role of the Funder/Sponsor:** The funders had no role in the design and conduct of the study; collection, management, analysis, and interpretation of the data; preparation, review, or approval of the manuscript; and decision to submit the manuscript for publication.

## References

1. Marjot T, Webb GJ, Barritt AS 4th, et al. COVID-19 and liver disease: mechanistic and clinical perspectives. *Nat Rev Gastroenterol Hepatol*. 2021;18(5):348-364. doi:10.1038/s41575-021-00426-4
2. Wanner N, Andrieux G, Badia-I-Mompel P, et al. Molecular consequences of SARS-CoV-2 liver tropism. *Nat Metab*. 2022;4(3):310-319. doi:10.1038/s42255-022-00552-6
3. Rawat, S. K., Asati, A. A., Jain, A., Mishra, N., & Ratho, R. K. (2021). Covid-19 associated hepatitis in children (CAH-C) during the second wave of SARS-COV-2 infections in central India: Is it a complication or transient phenomenon. <https://doi.org/10.1101/2021.07.23.21260716>
4. CDC alerts providers to hepatitis cases of unknown origin. Centers for Disease Control and Prevention. <https://www.cdc.gov/media/releases/2022/s0421-hepatitis-alert.html>. Published April 21, 2022. Accessed May 5, 2022.
5. TriNetX. Home page. Accessed April 28, 2022. <https://trinetx.com/>
6. Taquet M, Geddes JR, Husain M, Luciano S, Harrison PJ. 6-month neurological and psychiatric outcomes in 236□379 survivors of COVID-19: a retrospective cohort study using electronic health records. *Lancet Psychiatry*. 2021;8(5):416-427. doi:10.1016/S2215-0366(21)00084-5.