

Supplementary Information

Long-term ambient hydrocarbon exposure and incidence of urinary bladder cancer

Han-Wei Zhang, PhD, Zhi-Ren Tsai, PhD, Victor C. Kok, MD, PhD, FACP, Hsiao-Ching Peng, MSc, Yau-Hung Chen, PhD, Jeffrey J.P. Tsai, PhD, and Chun-Yi Hsu, PhD

Corresponding Author: Victor C. Kok, vkok@alumni.harvard.edu

Supplementary Figures: 2.

Supplementary Tables: 4.

Legends of Figures and Tables

Supplementary Figure S1. Population distribution of the daily average concentrations of air pollutants (SO₂, CO₂, CO, O₃, PM₁₀, and PM_{2.5}) over a 10-year exposure period.

Supplementary Figure S2. Population distribution of the daily average concentrations of air pollutants (NO_x, NO, NO₂, THC, NMHC, and CH₄) over a 10-year exposure period.

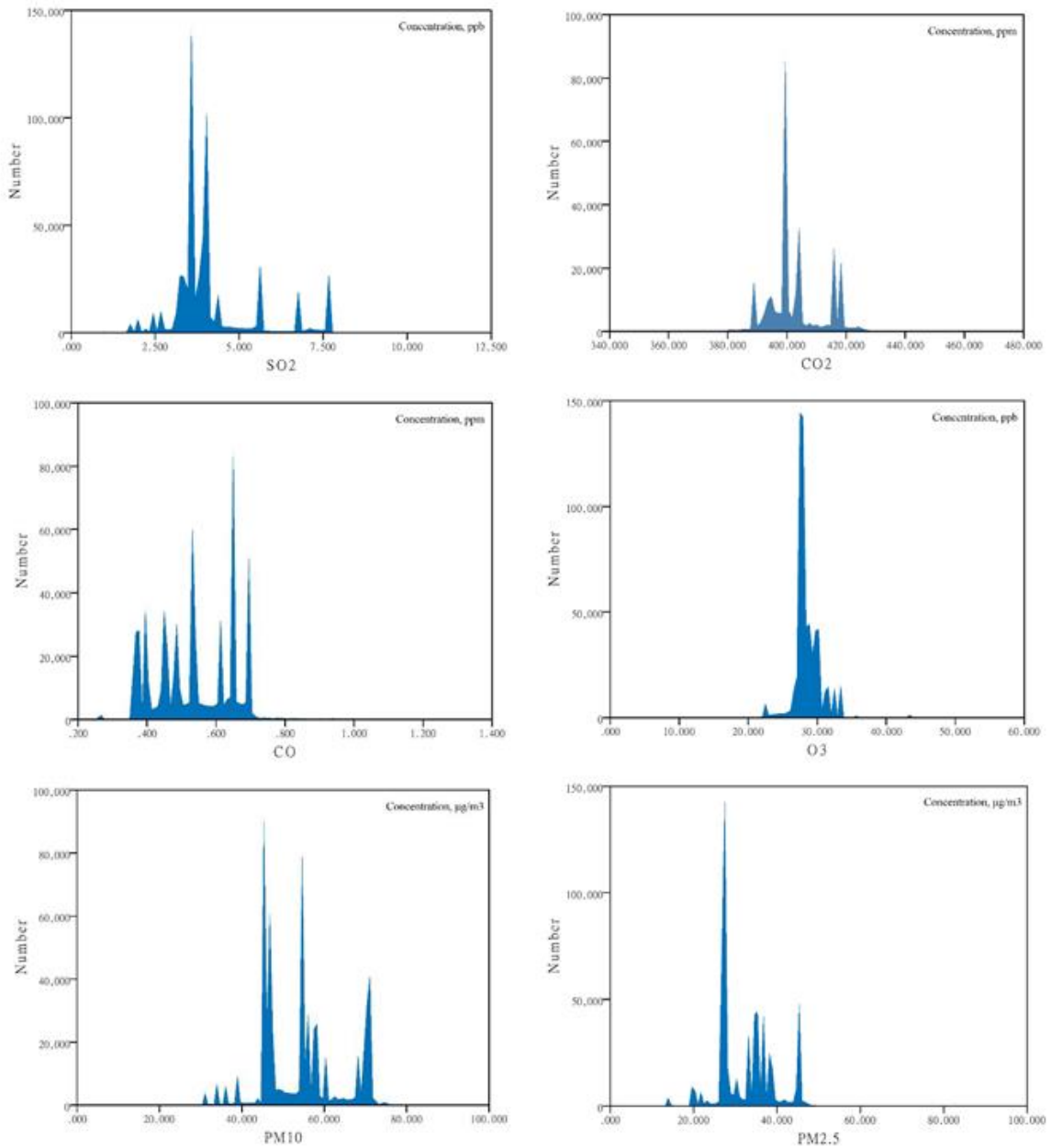
Supplementary Table S1. Pearson's correlation analysis for air pollutants over a 10-year exposure period. CO₂, carbon dioxide; CO, carbon monoxide; CH₄, methane; NMHC, nonmethane hydrocarbons; NO, nitrogen monoxide; NO₂, nitrogen dioxide; NO_x, nitrogen oxides; O₃, ozone; PM₁₀, particulate matter <10 µm in size; PM_{2.5}, particulate matter <2.5 µm in size; SO₂, sulfur dioxide; THC, total hydrocarbons. †Correlation significant at the 0.01 level (two-tailed). Correlation coefficient values of <0.3 denote a low strength of correlation, which qualifies as the controlling pollutant in multiple-pollutant models of targeted pollutants.

Supplementary Table S2. Mean and distribution of air pollutants over a 10-year exposure period. SD, standard deviation; 5th, 5 percentile; 95th, 95 percentile; Min, minimum; Max, maximum; IQR, interquartile range; T₁, 33.33 percentile; T₂, 66.66 percentile; ppb, parts per billion; ppm, parts per million; µg/m³, microgram/cubic meter; CO₂, carbon dioxide; CO, carbon monoxide; CH₄, methane; NMHC, nonmethane hydrocarbons; NO, nitrogen monoxide; NO₂, nitrogen dioxide; NO_x, nitrogen oxides; O₃, ozone; PM₁₀, particulate matter <10 µm in size; PM_{2.5}, particulate matter <2.5 µm in size; SO₂, sulfur dioxide; THC, total hydrocarbons.

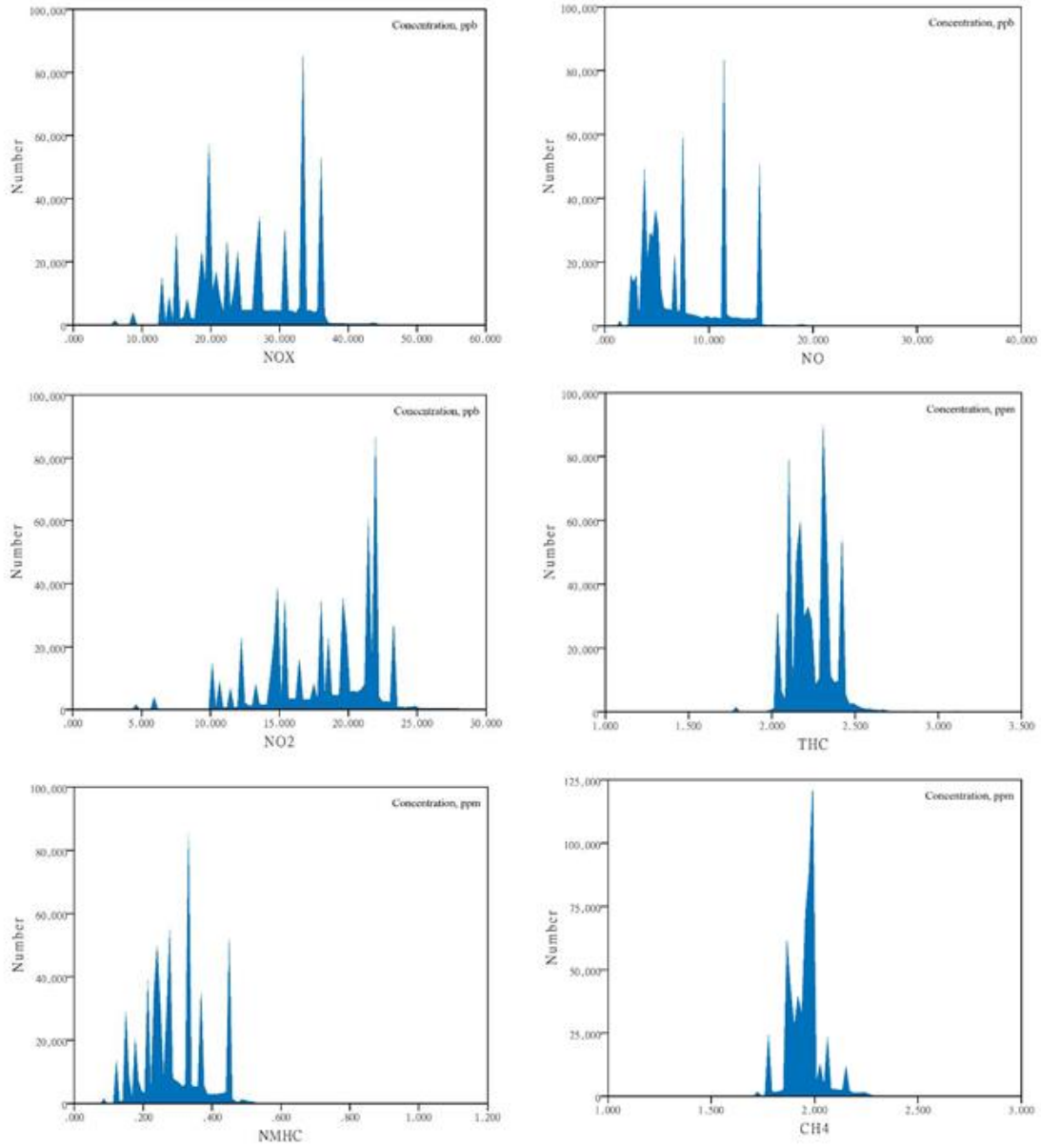
Supplementary Table S3. Sensitivity analysis showing adjusted hazard ratios of developing urinary bladder cancer stratified by sex during long-term THC or NMHC exposure at a standard deviation (SD) increment controlled for PM_{2.5}, and other air pollutants

Supplementary Table S4. Sensitivity analysis showing adjusted hazard ratios of the incidence of urinary bladder cancer stratified by diabetes mellitus status during long-term THC or NMHC exposure at a standard deviation (SD) increment controlled for PM_{2.5}, and other air pollutants.

Supplementary Figure S1. Population distribution of the daily average concentrations of air pollutants (SO₂, CO₂, CO, O₃, PM₁₀, and PM_{2.5}) over a 10-year exposure period.



Supplementary Figure S2. Population distribution of the daily average concentrations of air pollutants (NO_x, NO, NO₂, THC, NMHC, and CH₄) over a 10-year exposure period.



Supplementary Table S1. Pearson's correlation analysis for air pollutants over a 10-year exposure period.

	SO ₂	CO ₂	CO	O ₃	PM ₁₀	PM _{2.5}	NO _x	NO	NO ₂	THC	NMHC	CH ₄
SO ₂	1	0.098 [†]	0.186 [†]	0.059 [†]	0.621 [†]	0.613 [†]	0.272 [†]	0.073 [†]	0.449 [†]	0.089 [†]	0.156 [†]	-0.050 [†]
CO ₂		1	-0.328 [†]	-0.006 [†]	0.527 [†]	0.413 [†]	-0.274 [†]	-0.377 [†]	-0.154 [†]	-0.545 [†]	-0.474 [†]	-0.372 [†]
CO			1	-0.602 [†]	-0.319 [†]	-0.231 [†]	0.945 [†]	0.923 [†]	0.867 [†]	0.643 [†]	0.870 [†]	0.095 [†]
O ₃				1	0.402 [†]	0.358 [†]	-0.494 [†]	-0.460 [†]	-0.478 [†]	-0.296 [†]	-0.481 [†]	-0.019 [†]
PM ₁₀					1	0.936 [†]	-0.242 [†]	-0.427 [†]	-0.026 [†]	-0.223 [†]	-0.373 [†]	0.020 [†]
PM _{2.5}						1	-0.184 [†]	-0.387 [†]	0.045 [†]	-0.279 [†]	-0.349 [†]	-0.094 [†]
NO _x							1	0.949 [†]	0.946 [†]	0.679 [†]	0.831 [†]	0.154 [†]
NO								1	0.795 [†]	0.752 [†]	0.879 [†]	0.231 [†]
NO ₂									1	0.529 [†]	0.692 [†]	0.056 [†]
THC										1	0.750 [†]	0.743 [†]
NMHC											1	0.142 [†]
CH ₄												1

CO₂, carbon dioxide; CO, carbon monoxide; CH₄, methane; NMHC, nonmethane hydrocarbons; NO, nitrogen monoxide; NO₂, nitrogen dioxide; NO_x, nitrogen oxides; O₃, ozone; PM₁₀, particulate matter < 10 µm in size; PM_{2.5}, particulate matter < 2.5 µm in size; SO₂, sulfur dioxide; THC, total hydrocarbons.

[†]Correlation significant at the 0.01 level (two-tailed).

Correlation coefficient values of < 0.3 denote a low strength of correlation, which qualifies as the controlling pollutant in multiple-pollutant models of targeted pollutants.

Supplementary Table S2. Mean and distribution of air pollutants over a 10-year exposure period.

	Mean	SD	Median	5th	95th	Min	Max	IQR	T ₁ / T ₂ cutoff	T ₂ / T ₃ cutoff
SO ₂ (ppb)	4.17	1.29	3.85	2.69	7.63	12.10	0.50	0.58	3.54	4.04
CO ₂ (ppm)	402.75	9.55	398.96	388.45	418.07	463.65	343.47	8.61	398.96	404.31
CO (ppm)	0.54	0.12	0.53	0.37	0.69	1.32	0.25	0.20	0.47	0.61
O ₃ (ppb)	28.52	2.10	27.98	26.63	32.29	52.36	1.00	1.99	27.75	28.80
PM ₁₀ (µg/m ³)	54.47	10.02	54.54	40.02	70.75	85.20	1.00	14.03	46.72	57.50
PM _{2.5} (µg/m ³)	32.44	6.81	32.32	23.02	45.49	89.43	0.64	9.38	27.45	35.13
NO _x (ppb)	25.78	7.52	25.98	14.11	36.22	58.53	1.00	13.86	20.59	30.74
NO (ppb)	7.55	4.04	6.72	2.85	14.88	30.25	0.08	7.27	4.79	8.41
NO ₂ (ppb)	18.23	3.90	19.17	10.68	23.16	29.50	1.00	6.29	16.55	21.35
THC (ppm)	2.24	0.14	2.23	2.03	2.41	3.35	1.00	0.18	2.17	2.32
NMHC (ppm)	0.29	0.09	0.27	0.15	0.45	1.09	0.06	0.10	0.24	0.33
CH ₄ (ppm)	1.95	0.08	1.96	1.82	2.08	2.77	1.00	0.09	1.92	1.98

SD, standard deviation; 5th, 5 percentile; 95th, 95 percentile; Min, minimum; Max, maximum; IQR, interquartile range; T₁, 33.33 percentile; T₂, 66.66 percentile; ppb, parts per billion; ppm, parts per million; µg/m³, microgram/cubic meter; CO₂, carbon dioxide; CO, carbon monoxide; CH₄, methane; NMHC, nonmethane hydrocarbons; NO, nitrogen monoxide; NO₂, nitrogen dioxide; NO_x, nitrogen oxides; O₃, ozone; PM₁₀, particulate matter < 10 µm in size; PM_{2.5}, particulate matter < 2.5 µm in size; SO₂, sulfur dioxide; THC, total hydrocarbons.

Supplementary Table S3. Sensitivity analysis showing adjusted hazard ratios of developing urinary bladder cancer stratified by sex during long-term THC or NMHC exposure at a standard deviation (SD) increment controlled for PM_{2.5}, and other air pollutants

Ambient pollutant category	Controlling pollutant ^a	Adjusted HR ^b (95% CI)	
		Male (n = 305,071)	Female (n = 303,158)
THC (0.14 ppm increase)	-	1.72 (1.62–1.83) [‡]	1.88 (1.72–2.05) [‡]
	SO ₂	1.70 (1.60–1.81) [‡]	1.87 (1.71–2.04) [‡]
	O ₃	1.57 (1.48–1.66) [‡]	1.72 (1.58–1.87) [‡]
	PM ₁₀	1.96 (1.84–2.09) [‡]	2.10 (1.91–2.30) [‡]
	PM _{2.5}	2.07 (1.94–2.21) [‡]	2.26 (2.06–2.49) [‡]
	SO ₂ , O ₃	1.53 (1.44–1.62) [‡]	1.75 (1.60–1.91) [‡]
NMHC (0.09 ppm increase)	-	1.33 (1.26–1.41) [‡]	1.47 (1.35–1.59) [‡]
	SO ₂	1.31 (1.24–1.39) [‡]	1.47 (1.36–1.59) [‡]
	CH ₄	1.17 (1.11–1.23) [‡]	1.25 (1.16–1.35) [‡]
	SO ₂ , CH ₄	1.12 (1.06–1.19) [‡]	1.23 (1.14–1.33) [‡]

HR, hazard ratio; CI, confidence interval; SO₂, sulfur dioxide; O₃, ozone; PM₁₀, particulate matter < 10 µm in size; PM_{2.5}, particulate matter < 2.5 µm in size; CH₄, methane.

^a Additional pollutants were added into the pollutant models for multiple analysis only when |Pearson's correlation coefficient| < 0.3 (Suppl Table S1).

^b Cox regression models were adjusted for age, gender, essential hypertension, chronic cystitis, smoking-related diagnoses, alcohol use disorders, morbid obesity, spinal cord injury, chronic liver disease, diabetes mellitus, gout, chronic kidney disease, pesticide exposures, dyslipidemia, lag0-2, season, and ambient temperature, controlled pollutants (weak correlation with THC or NMHC).

[‡]p < 0.001.

Supplementary Table S4. Sensitivity analysis showing adjusted hazard ratios of the incidence of urinary bladder cancer stratified by diabetes mellitus status during long-term THC or NMHC exposure at a standard deviation (SD) increment controlled for PM_{2.5}, and other air pollutants.

Air pollutant category	Controlling pollutant ^a	Adjusted HR ^b (95% CI)	
		Diabetes mellitus (n = 103,317)	Non-diabetes mellitus (n = 504,912)
THC (0.14 ppm increase)	-	2.03 (1.82–2.26) [‡]	1.71 (1.61–1.81) [‡]
	SO ₂	2.00 (1.79–2.23) [‡]	1.69 (1.60–1.79) [‡]
	O ₃	1.82 (1.64–2.02) [‡]	1.56 (1.48–1.65) [‡]
	PM ₁₀	2.34 (2.09–2.64) [‡]	1.92 (1.81–2.04) [‡]
	PM _{2.5}	2.55 (2.26–2.87) [‡]	2.02 (1.90–2.14) [‡]
	SO ₂ , O ₃	1.80 (1.61–2.01) [‡]	1.54 (1.46–1.63) [‡]
NMHC (0.09 ppm increase)	-	1.51 (1.37–1.67) [‡]	1.34 (1.27–1.41) [‡]
	SO ₂	1.49 (1.34–1.65) [‡]	1.33 (1.26–1.40) [‡]
	CH ₄	1.31 (1.19–1.44) [‡]	1.16 (1.10–1.21) [‡]
	SO ₂ , CH ₄	1.26 (1.14–1.39) [‡]	1.12 (1.07–1.18) [‡]

HR, hazard ratio; CI, confidence interval; SO₂, sulfur dioxide; O₃, ozone; PM₁₀, particulate matter < 10 µm in size; PM_{2.5}, particulate matter < 2.5 µm in size; CH₄, methane.

^aAdditional pollutants were added into the pollutant models for multiple analysis only when the absolute value of Pearson's correlation coefficient was < 0.3.

^bCox regression models were adjusted for age, gender, essential hypertension, chronic cystitis, smoking-related diagnoses, alcohol use disorders, morbid obesity, spinal cord injury, chronic liver disease, diabetes mellitus, gout, chronic kidney disease, pesticide exposures, dyslipidemia, lag0-2, season, and ambient temperature, controlled pollutants (weak correlation with THC or NMHC).

[‡]p < 0.001.