

PCSK6 and Genomic Determinants of Idiopathic Pulmonary Fibrosis Survival

Justin M. Oldham MD, Richard J. Allen PhD, Jose M. Lorenzo-Salazar MSc, Philip L. Molyneaux MBBS, Shwu-Fan Ma PhD, Chitra Joseph PhD, John S. Kim MD, Beatriz Guillen-Guio PhD, Tamara Hernández-Beeftink MSc, Jonathan Kropski MD, Yong Huang MD, Cathryn T. Lee MD, Ayodeji Adegunsoye MD, Janelle Vu Pugashetti MD, Angela L. Linderholm PhD, Vivian Vo BS, Mary E. Strek MD, Jonathan Jou, Adrian Muñoz-Barrera; Luis A. Rubio-Rodriguez; Richard Hubbard MBBS, Nik Hirani MBBS, Moira K.B. Whyte MBBS, Simon Hart MBBS, Andrew G. Nicholson MBBS, Lisa Lancaster MD, Helen Parfrey MBBS, Doris Rassl MBBS, William Wallace MBBS, Eleanor Valenzi MD, Yingze Zhang PhD, Josyf Mychaleckyj DPhil, Amy Stockwell MS, Naftali Kaminski MD, Paul J. Wolters MD, Maria Molina-Molina MD, William A. Fahy, Fernando J. Martinez MD, Ian P. Hall BMCh, Martin D. Tobin MBChB, Toby M. Maher BM, Timothy S. Blackwell MD, Brian L. Yaspan PhD, R Gisli Jenkins MBBS, Carlos Flores PhD, Louise V Wain PhD, Imre Noth MD

Online data supplement

Supplemental Methods	2-4
Figure E1. Quality control and filtering results.....	5
Figure E2. Kaplan-Meier survival plot for IPF cohorts within US dataset.....	6
Figure E3. Kaplan-Meier survival plot for IPF cohorts within UK dataset.....	7
Figure E4. Kaplan-Meier survival plot for IPF cohorts within UUS dataset	8
Figure E5. Kaplan-Meier survival plot for US, UK and UUS patients included in GWAS stage I.....	9
Figure E6. Kaplan-Meier survival plot for patients included in GWAS stage II.....	10
Figure E7. QQ plots for the US cohort (a), UK cohort (b) and UUS cohort (c).....	11
Figure E8. QQ plots for MAF bins, including MAF<1% (a), MAF 1-5% (b) and MAF >5% (c).....	12
Figure E9. Regional plots for top variants after stage II meta-analysis.....	13
Figure E10. PCSK6 Western Blot	14
Figure E11. Strength of association between IPF risk polygenic risk score and transplant-free survival	15
Table E1. Stage I variants of nominal significance identified in the 3-way meta-analysis.....	16-22
Table E2. Stage II validation of survival-associated variants identified in stage I	23-29
Table E3. Survival association for top variants before and after multivariable adjustment.....	30
Table E4. Characteristics of patients with PCSK6 variant.....	31
Table E5. Sensitivity analysis comparing PCSK6 results with censoring lung transplant versus considering this an event.....	32
Table E6. <i>In silico</i> functional assessment variants associated with TFS after stage II.....	33-34
Table E7. Survival association for fourteen genetic variants previously linked to IPF susceptibility.....	35
Table E8. Risk association for the four genetic variants linked to IPF survival in the stage I.....	36
Supplementary References	37

Supplemental Methods

Functional effects of survival-associated variants

In silico assessments were used to infer the biological effect of variants associated with TFS after stage II testing. Gene prioritization was based on Open Targets Genetics scores. Potential regulatory effects were then assessed for epigenetic mechanisms [HaploReg, RegulomeDB], long-distance genomic interactions [Capture Hi-C Plotter (CHiCP), considering a default score of 5 to select interactions], tissue-specific cis eQTLs and DNase I sensitivity QTLs (dsQTLs) [GTEx, considering a tissue-specific $P \leq 0.05$ as threshold, and SNPDeI_Score]. Effect of survival associated variants on other traits was assessed using PhenoScanner ($P < 0.001$).

Survival association for IPF susceptibility-associated variants

To assess the association between IPF survival and variants previously linked to IPF-risk,¹⁻⁴ polygenic risk score (PRS) analysis was performed using PRSice⁵ (v1.25) to determine genetic overlap between IPF risk and survival. An IPF susceptibility PRS was calculated using weights from a previous IPF risk GWAS¹ and tested for its association with TFS in individuals in the UUS study who were not included in the IPF risk GWAS. Independent variants (selected through LD clumping with $r^2 \leq 0.1$) associated with IPF risk at $P \leq 0.001$ ⁵ comprised the initial PRS with threshold adjustments made to identify the PRS that explained the highest proportion of IPF risk. The final PRS was then tested for TFS association with the aforementioned Cox proportional hazards regression model using the survival package in R v3.5.3. Given its large effect on IPF risk, analyses were then repeated excluding variants near the *MUC5B* promoter polymorphism (within 500 kb of rs35705950).

PCSK6 Immunohistochemistry

The tissue samples were obtained after informed consent and local ethics approval (South East Scotland SAHSC Bioresource-reference number 06/S1101/41; Brompton Node samples- reference number 15/SC/0101; Papworth Node Samples reference number 08/H0304/56+5; non-diseased controls-reference number (Q)GM030404 and Nottingham BRC samples- reference number 08/H0407/1). Formalin-Fixed Paraffin Embedded (FFPE) tissue samples were cut, 5µm thick, on positively charged Leica Surgipath X-tra slides. IHC staining was performed using the Novocastra Novolink™ Polymer Detection Systems kit (RE7280-K, Leica, Biosystems, Newcastle, UK) as previously described.⁶ In brief, tissue sections were deparaffinised with xylene and rehydrated through 100% ethanol. Heat-induced (pH=6) citrate antigen retrieval was performed and rabbit PCSK6 antibody (HPA004774, Atlas antibodies, Sweden; 1:200 dilution of stock antibody) was incubated overnight at 4°C. 3-3' Diaminobenzidine tetrahydrochloride (Novolink DAB substrate buffer plus) was used as the chromogen. Slides were counterstained with Novolink haematoxylin for 6 min, dehydrated and cover slipped. Normal kidney tissue was used as a positive tissue control, whereas no primary antibody was used as a negative control.

PCSK6 Western blotting

Cell Lysis Buffer (Cell Signalling, USA) supplemented with protease inhibitor cocktail (Sigma, USA) was used to collect the cell protein and the western blotting protein concentrations were determined by BCA assay using a commercially available kit (Thermo Fisher Scientific, Waltham, MA), according to the manufacturer's instructions. 20 µg protein were loaded per lane of a 4-12%, pre-cast Bis-Tris gradient gels (Thermo Fisher Scientific, Waltham, MA), subject to electrophoresis, and transferred onto a nitrocellulose membrane (Merck, GE10600002). Membranes were blocked for 1 h in 5% non-fat milk in tris-buffered saline containing 0.1% Tween, pH=7.4 (TBST). Membranes were incubated with rabbit anti-PCSK6 (HPA004774, Atlas antibodies, Sweden–1:1000 dilution of stock antibody) diluted in the blocking buffer for overnight at 4°C. A loading control of mouse Anti-β-Actin was also used to demonstrate protein loading (Merck; A5441; Mouse monoclonal- Anti-β-Actin antibody at 1:100000 dilution of stock antibody). Following day membranes were washed in TBST, incubated with an anti-mouse-HRP and anti-rabbit-HRP conjugated secondary antibodies (Dako, USA) at 1:2500 for 1hr at room temperature. Visualization was performed with Clarity Max™ ECL Substrate (Biorad, UK) on a Licor C-DiGit.

PCSK6 Plasma Testing

Stored frozen plasma in ethylenediaminetetraacetic acid aliquots from UC-Davis (n=187) and UChicago (n=139) were thawed and processed at UC-Davis in institutional batches. PCSK6 concentration was determined by enzyme-linked immunosorbent assay (ELISA) using a commercially available kit purchased from MyBioSource (San Diego, CA). The kit was run according to the manufacturer's instructions. Briefly, standards, undiluted plasma samples and a horseradish peroxidase-conjugated detection antibody were added to 96-well plates pre-coated with capture antibody before incubation for 1 h at 37°C. The wells were then washed and developed with chromogen solution included with the kit and immediately read at 450 nM using an ELISA plate reader. Data are reported as ng/mL. Intra- and inter-assay variability was controlled for using control standards on each plate. Protein concentration was log transformed for outcome modeling.

PCSK6 Protein Staining Intensity

The immunohistochemically stained slides were scanned using a ScanScope XT Slide Scanner (LeicaAperio Technologies, Vista, CA, USA) under 20x objective magnification (0.5 µm resolution) using Panoramic Viewer (3DHISTECH Ltd Budapest, Hungary) slide viewing software. Both the percentage of staining and staining intensity of PCSK6 expression in lung sections were individually assessed. For PCSK6 quantification, the following scoring system of seven high-power fields at X40 per tissue section were used:

- **Score 0:** No cells stained
- **Score 0.5:** 1-10 cells stained at low intensity
- **Score 1.0:** 1-10 cells stained at high intensity
- **Score 1.5:** 11-25 cells stained at low intensity
- **Score 2.0:** 11-25 cells stained at high intensity
- **Score 2.5:** ≥26 cells stained at low intensity

- Score 3.0: ≥ 26 cells stained at high intensity

To normalize for varying numbers of regions of interest per slide, the mean score per slide was calculated. A Mann-Whitney U-test was used to compare between IPF and control lung samples. Statistical analysis was performed using GraphPad Prism 7.0 (GraphPad Software, San Diego, CA, USA).

PCSK6 Plasma Testing

Stored frozen plasma in ethylenediaminetetraacetic acid aliquots from UC-Davis (n=187) and UChicago (n=139) were thawed and processed at UC-Davis in institutional batches. PCSK6 concentration was determined by enzyme-linked immunosorbent assay (ELISA) using a commercially available kit purchased from MyBioSource (San Diego, CA). The kit was run according to the manufacturer's instructions. Briefly, standards, undiluted plasma samples and a horseradish peroxidase-conjugated detection antibody were added to 96-well plates pre-coated with capture antibody before incubation for 1 h at 37°C. The wells were then washed and developed with chromogen solution included with the kit and immediately read at 450 nM using an ELISA plate reader. Data are reported as ng/mL. Intra- and inter-assay variability was controlled for using control standards on each plate. Protein concentration was log transformed for outcome modeling.

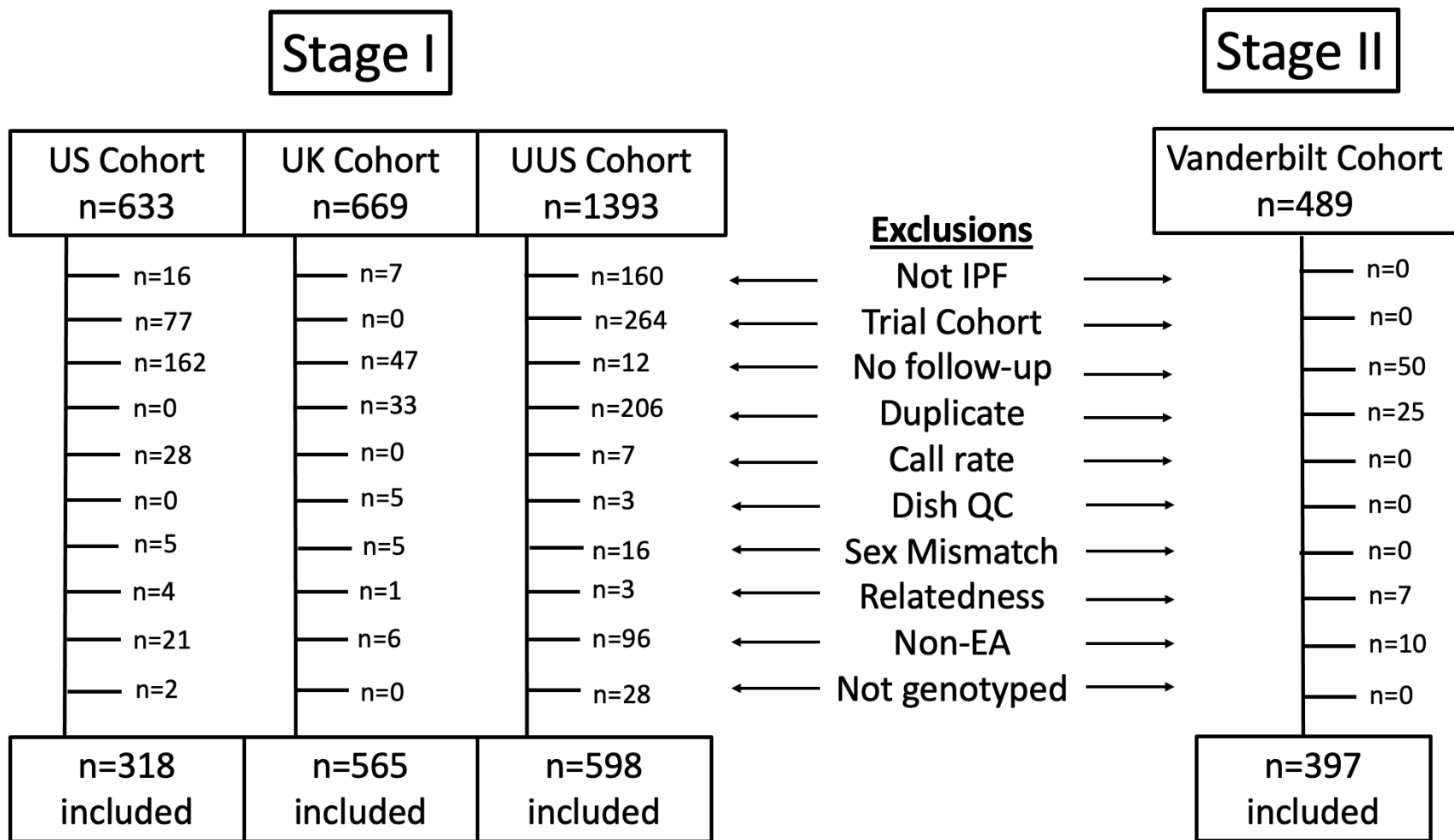


Figure E1. Quality control and filtering results

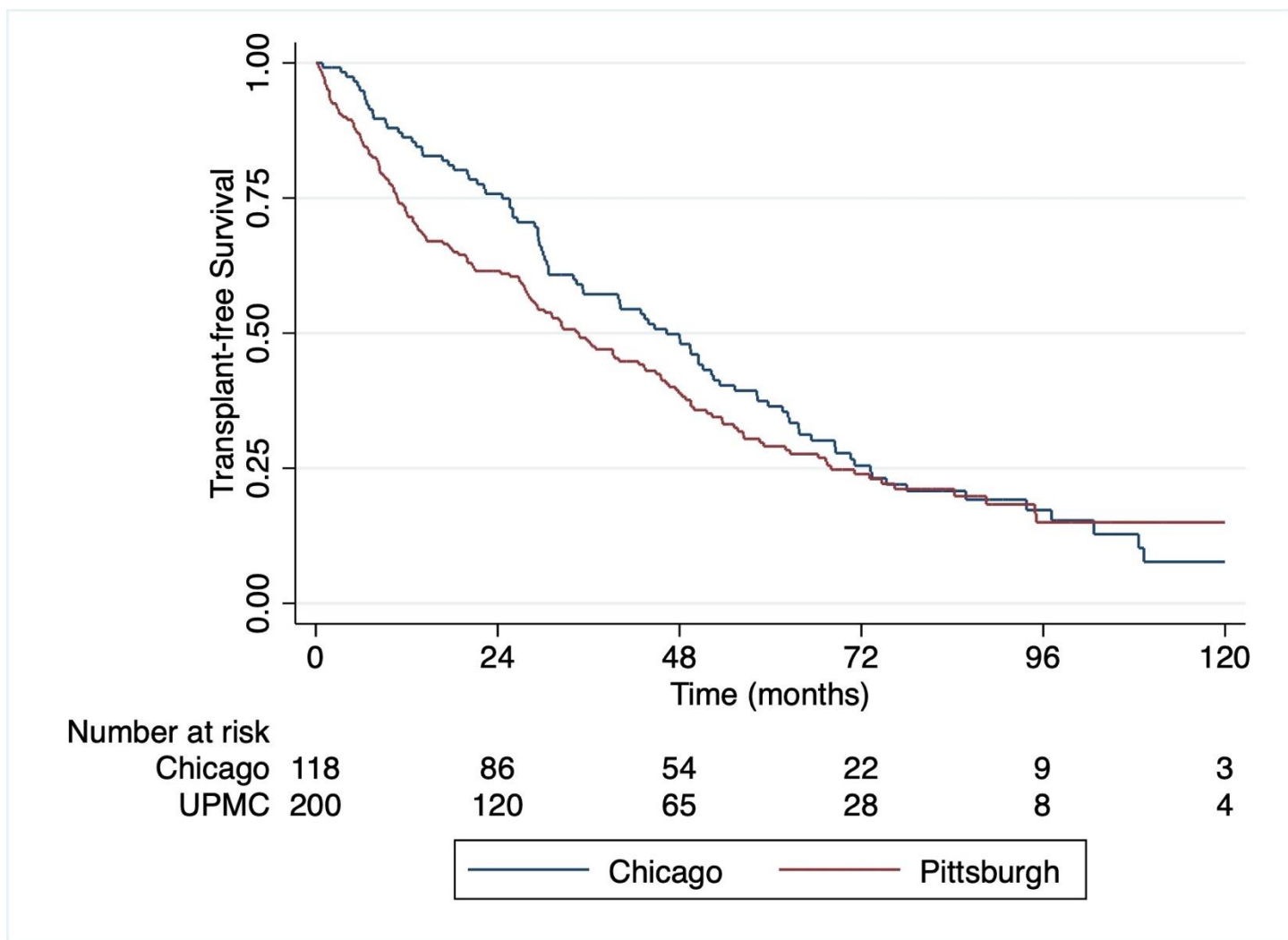


Figure E2. Kaplan-Meier survival plot for IPF cohorts within US dataset.

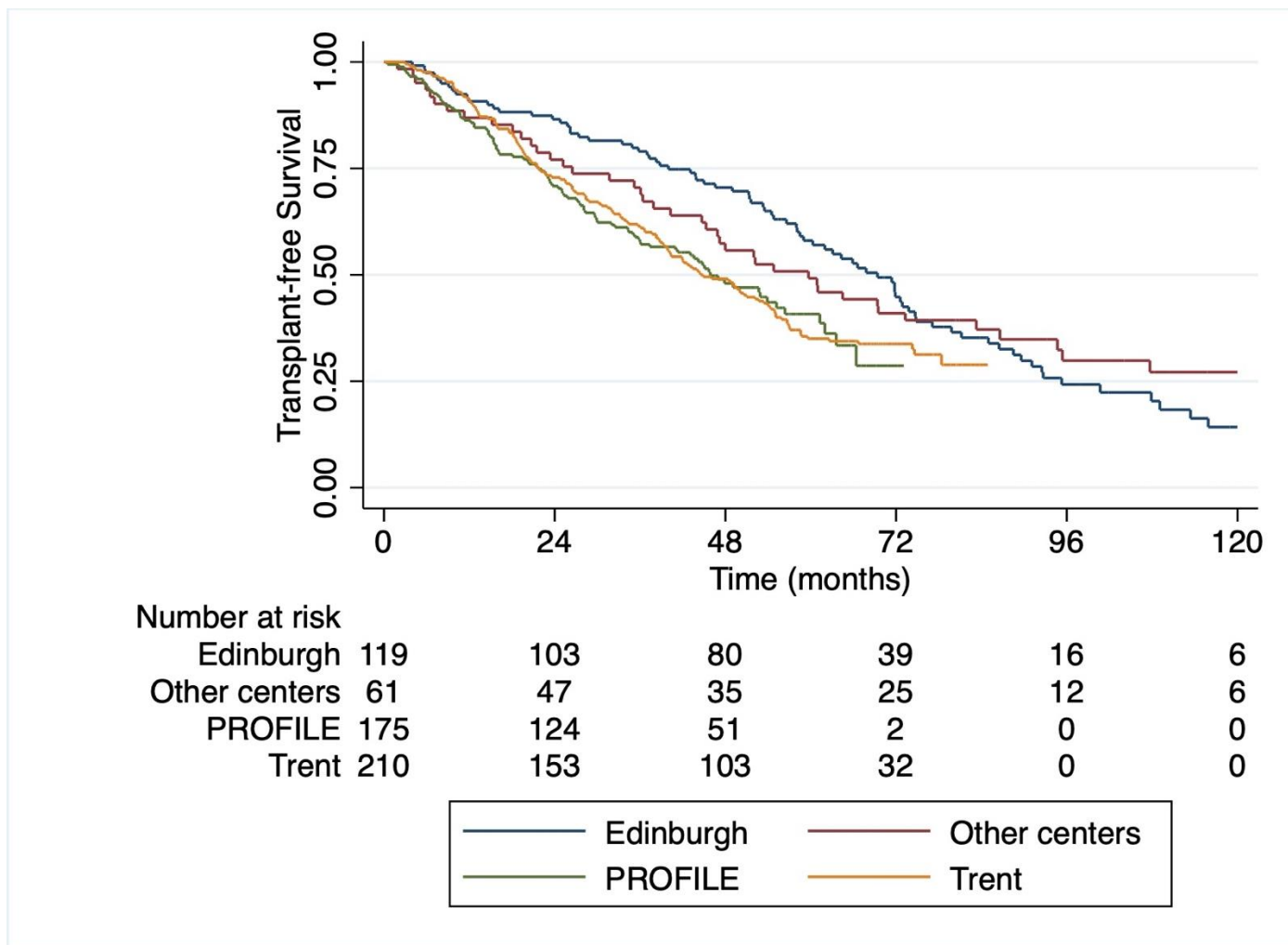


Figure E3. Kaplan-Meier survival plot for IPF cohorts within UK dataset.

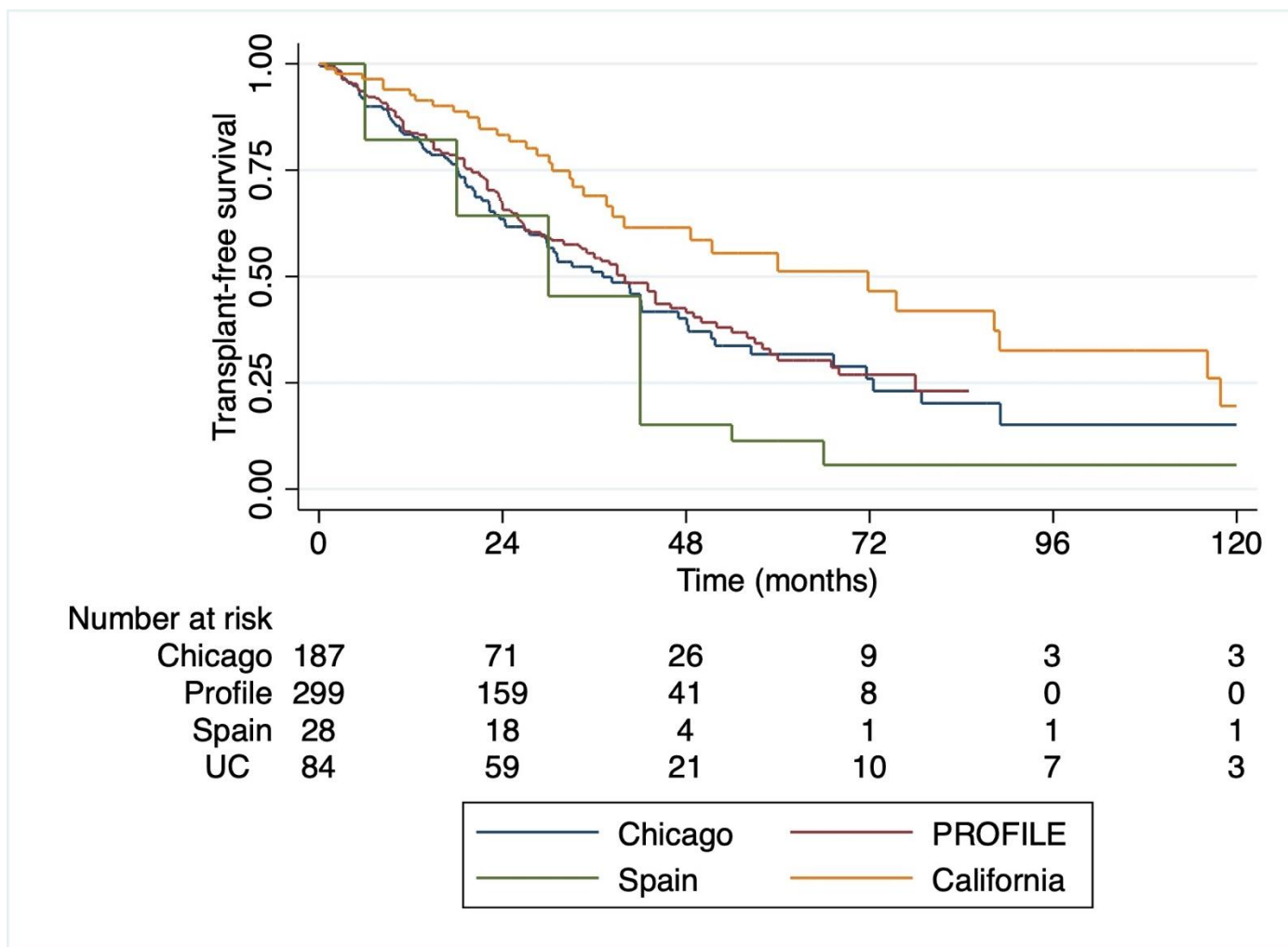


Figure E4. Kaplan-Meier survival plot for IPF cohorts within UUS dataset (US, UK, Spain).

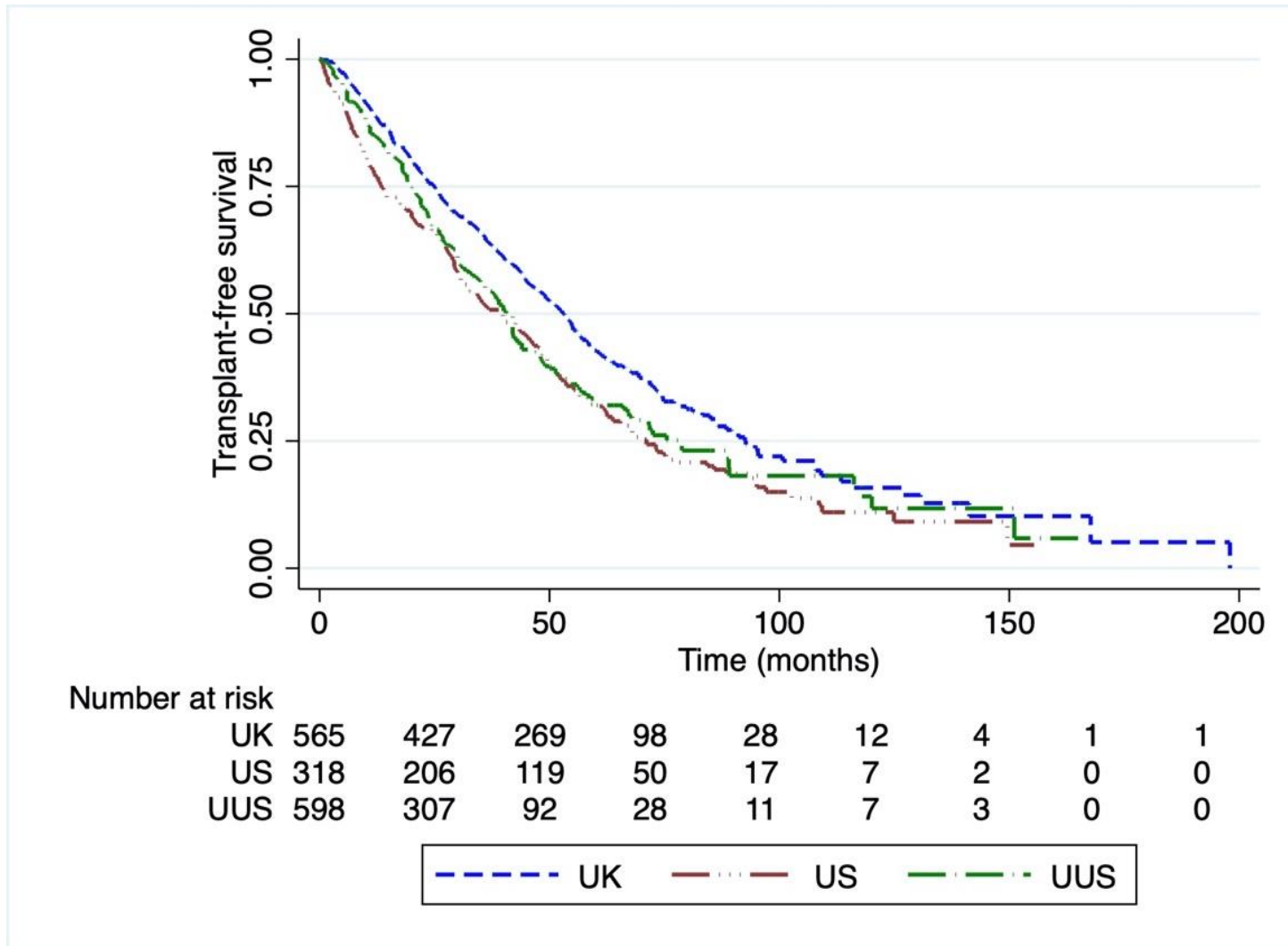


Figure E5. Kaplan-Meier survival plot for US, UK and UUS patients included in GWAS stage I.

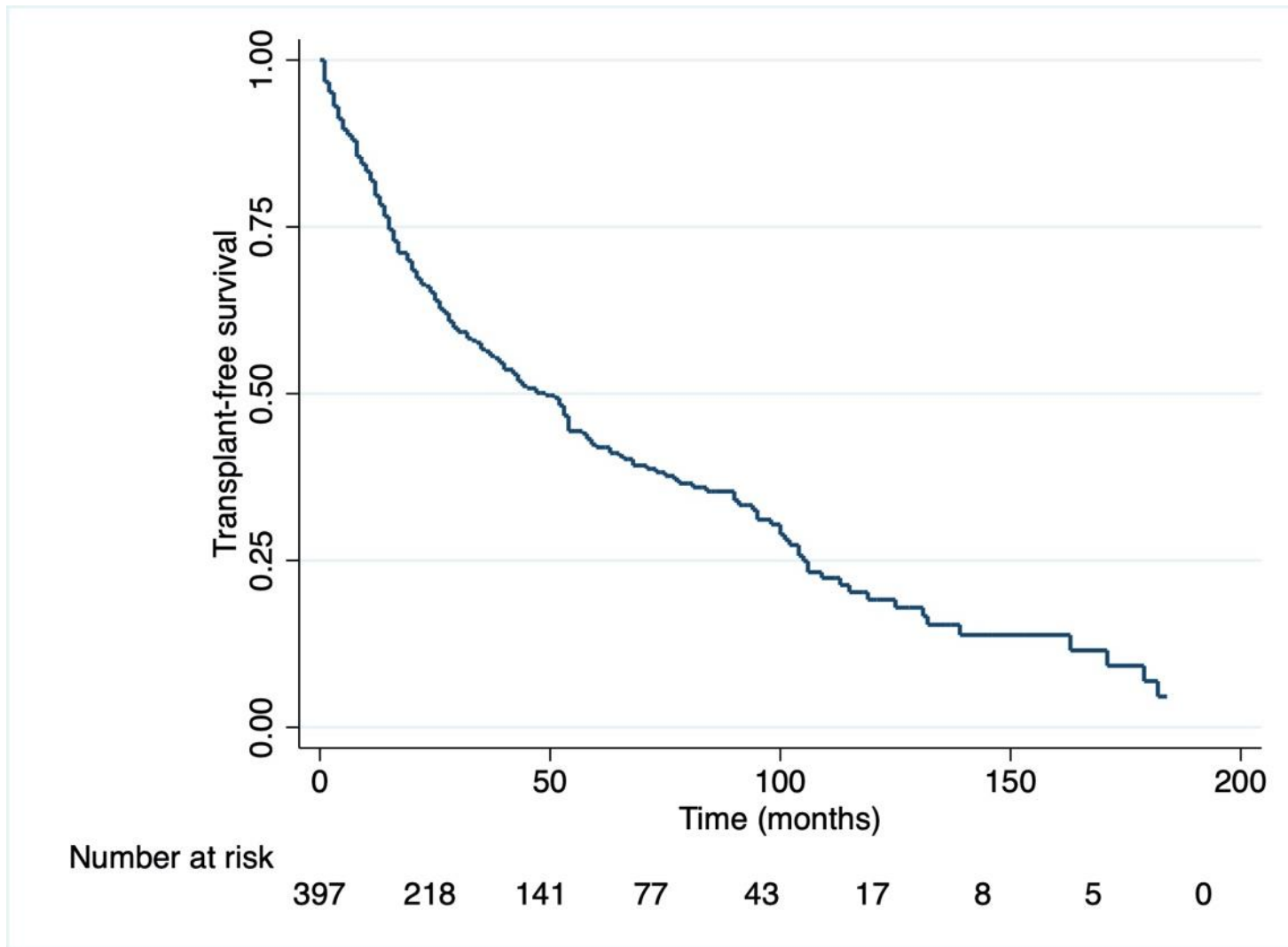


Figure E6. Kaplan-Meier survival plot for patients included in GWAS stage II.

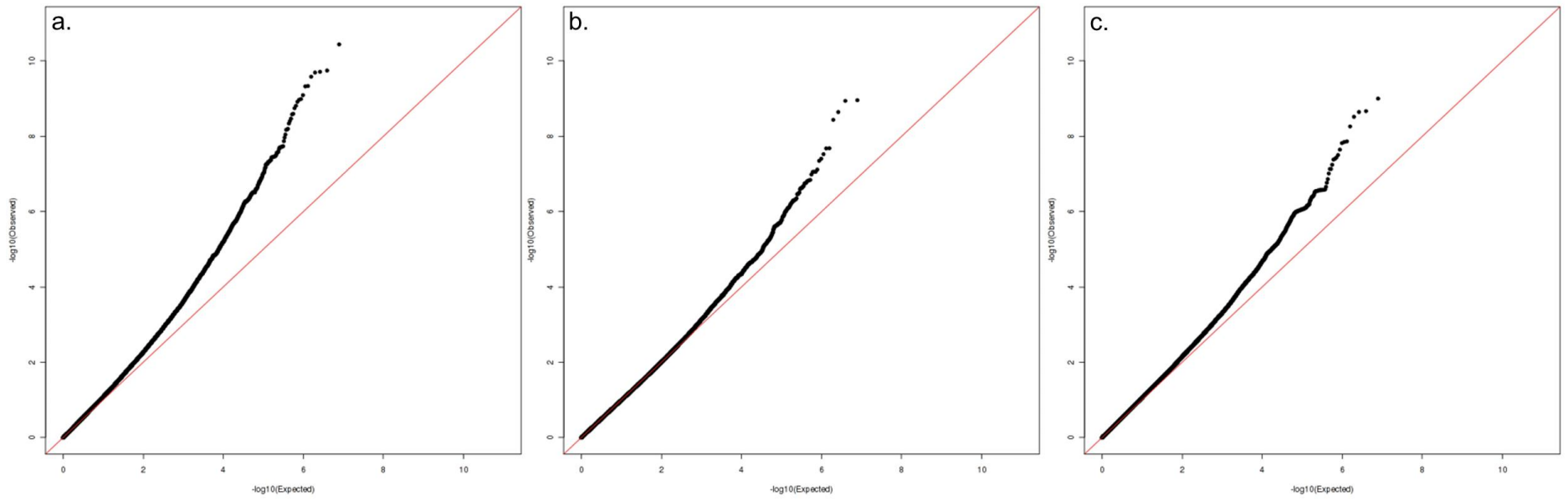


Figure E7. QQ plots for US ($\lambda=1.014$) (a), UK ($\lambda=0.996$) (b) and UUS ($\lambda=1.082$) (c) cohorts.

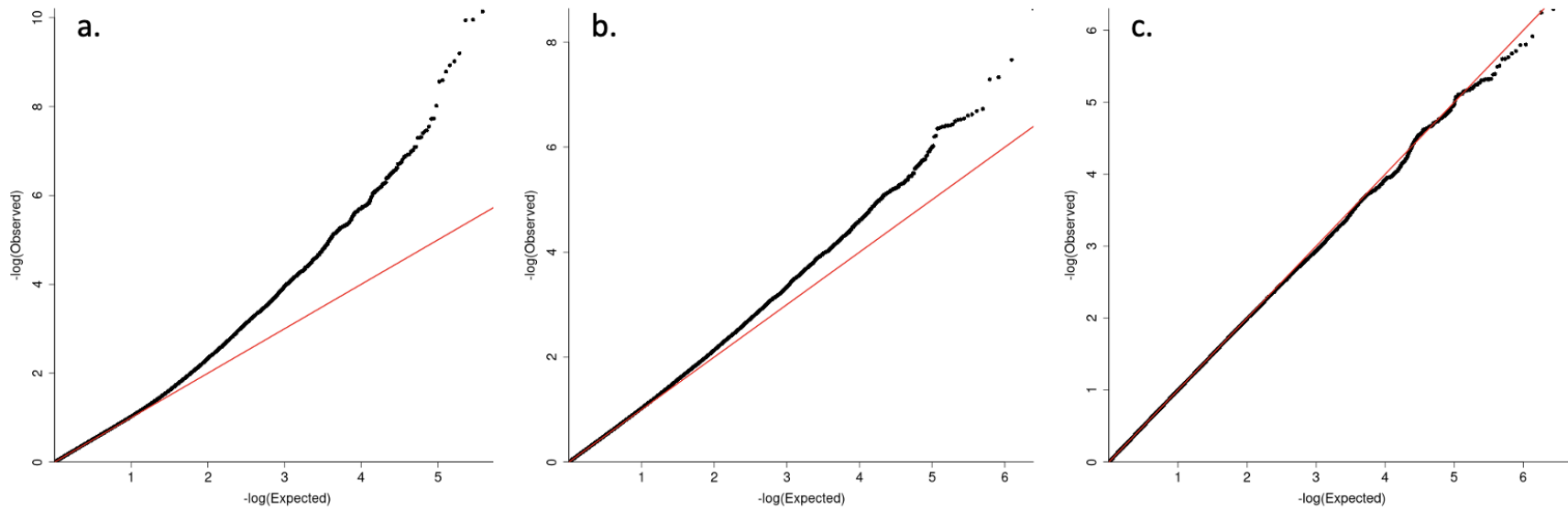


Figure E8. QQ plots for minor allele frequency (MAF) bins, including MAF<1% (a) ($\lambda=1.05$), MAF 1-5% (b) ($\lambda=1.02$) and MAF >5% (c) ($\lambda=1.00$).

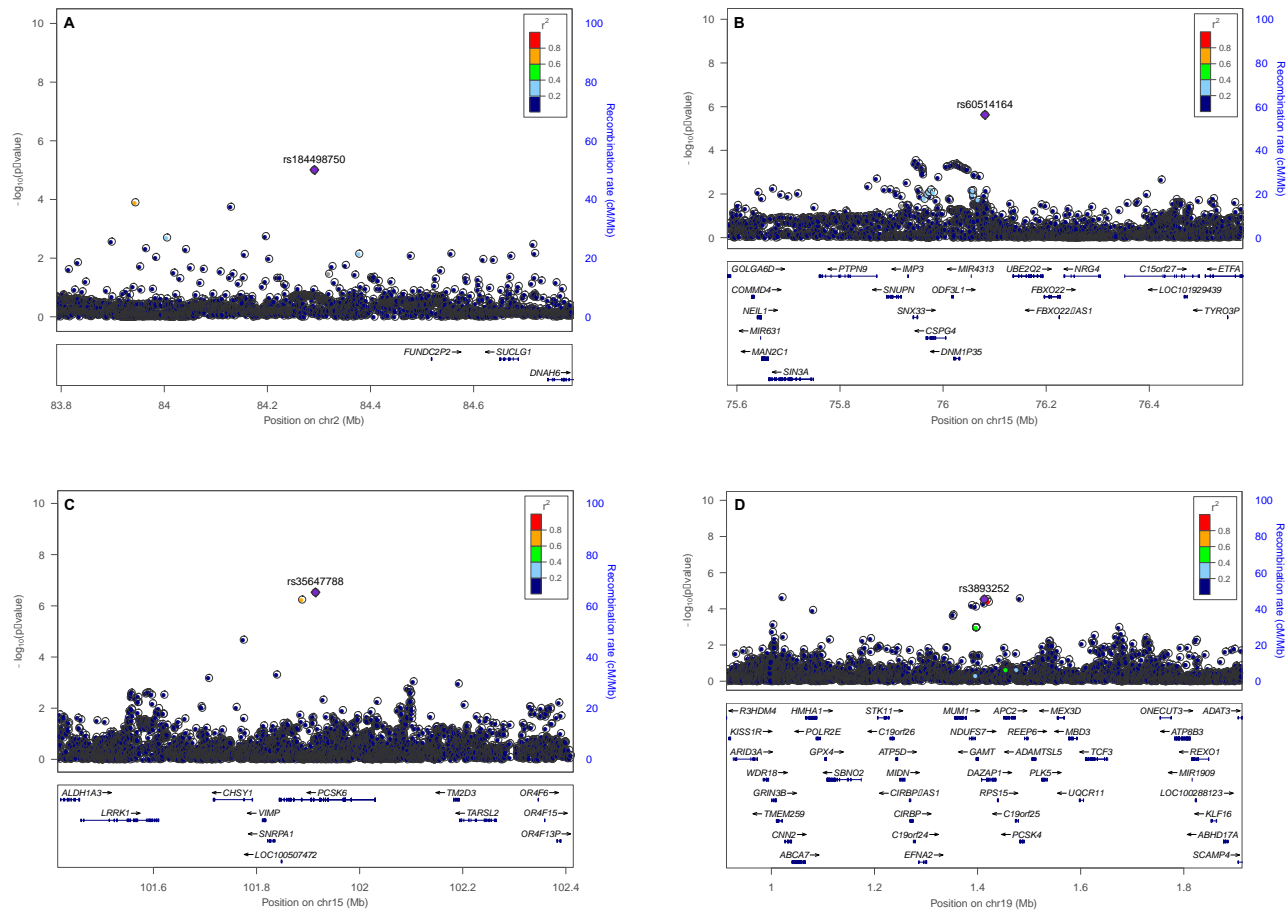


Figure E9. Regional plots for top variants after stage II meta-analysis. Y-axis displays $-\log_{10}$ transformed p-value and x-axis shows the hg19 genomic position. Estimated recombination rates (light blue line) are plotted on the right y-axis. The results for the remaining SNPs are color coded to reflect their degree of linkage disequilibrium with the leading SNP (indicated) based on pairwise r^2 values in Europeans.

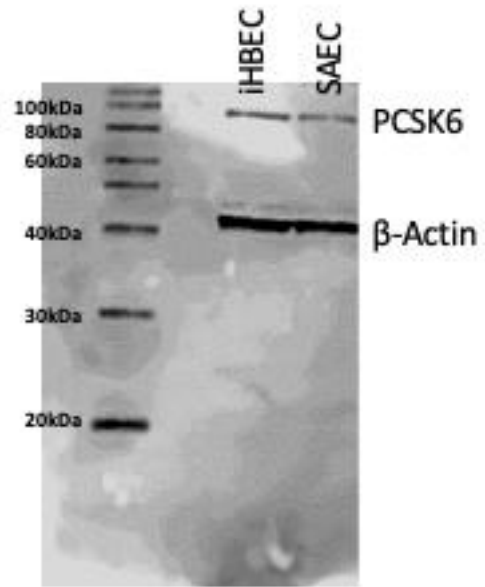


Figure E10. PCSK6 Western Blot. Single bands for PCSK6 (HPA004774) in the immortalized human bronchial epithelial cells (iHBECs) and small airway epithelial cells (SAEC) cells, at molecular weight of 100kDa, β -Actin (A544) was used as a loading control around 42kDa.

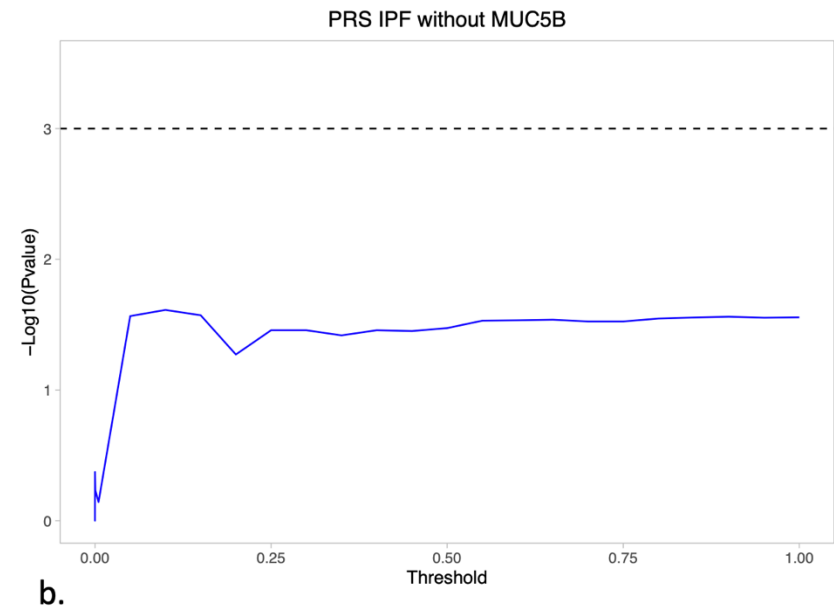
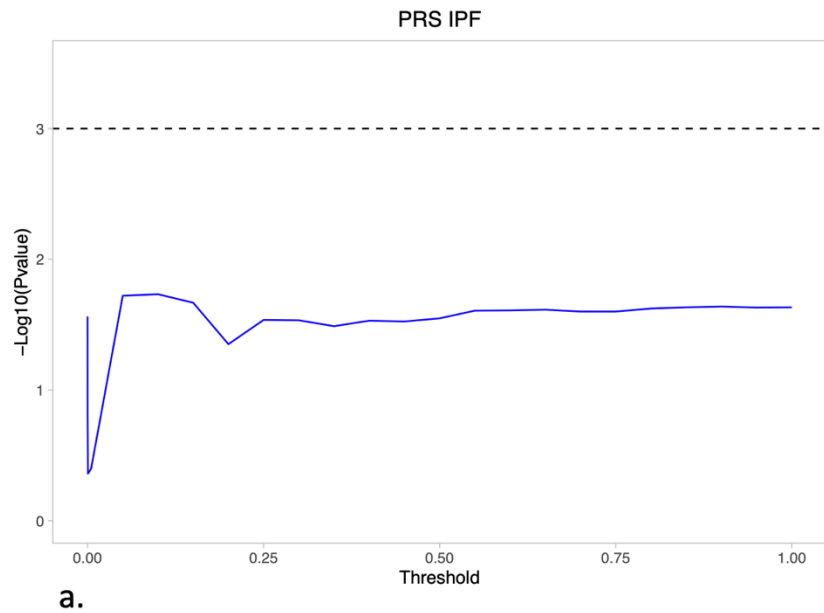


Figure E11. Strength of association between IPF risk polygenic risk score and transplant-free survival. The x axis shows the p -threshold used for determining which variants to include in the risk PRS calculation (i.e. as the value increases then more variants are included in the calculation) and the y axis shows the association of the PRS with TFS. The dotted line shows the significance threshold of $p=0.001$. Figure a) shows the association of the PRS when calculated using variants from across the genome, b) shows the strength of association when excluding the *MUC5B* region from the PRS calculation.

Table E1. Stage I variants of nominal significance identified in the 3-way meta-analysis

Variant Location and Alleles					US cohort				UK cohort				UUS cohort				Stage-I meta-analysis	
Chr	Pos	SNP rsID	REF	EA	R2	EAF	HR [95%CI]	P	R2	EAF	HR [95%CI]	P	R2	EAF	HR [95%CI]	P	HR [95%CI]	P
1	10762349	rs7514663	C	T	NA	NA	NA	NA	0.91	0.0141	2.11 [1.16-3.84]	1.39E-2	0.92	0.0107	4.10 [2.01-8.37]	1.07E-4	2.74 [1.72-4.36]	2.15E-5
1	94606086	rs185926659	G	T	0.92	0.0050	6.68 [1.87-23.9]	3.44E-3	0.93	0.0072	5.24 [2.51-11.0]	1.05E-5	NA	NA	NA	NA	5.55 [2.91-10.6]	1.95E-7
1	100493151	rs148192333	T	C	NA	NA	NA	NA	0.93	0.0111	2.61 [1.36-5.02]	4.07E-3	0.89	0.0075	3.81 [1.63-8.92]	2.08E-3	2.98 [1.76-5.05]	4.75E-5
1	170154993	rs111749519	A	G	0.81	0.0124	2.7 [1.15-6.36]	2.30E-2	0.92	0.0094	2.91 [1.43-5.93]	3.31E-3	0.89	0.0080	2.68 [1.14-6.3]	2.32E-2	2.79 [1.74-4.47]	2.17E-5
1	188069617	rs190285902	C	G	NA	NA	NA	NA	0.87	0.0137	1.91 [1.03-3.56]	4.05E-2	0.85	0.0084	6.93 [2.95-16.3]	8.72E-6	2.92 [1.76-4.86]	3.69E-5
1	188151083	rs145551873	G	A	0.62	0.0117	4.72 [1.79-12.4]	1.66E-3	0.95	0.0226	1.88 [1.15-3.06]	1.15E-2	0.91	0.0125	2.75 [1.33-5.69]	6.43E-3	2.35 [1.61-3.45]	1.05E-5
1	200768521	rs11589092	G	A	0.97	0.0975	1.50 [1.08-2.07]	1.43E-2	0.98	0.0851	1.38 [1.07-1.77]	1.19E-2	0.97	0.0736	1.45 [1.06-1.99]	2.03E-2	1.43 [1.20-1.70]	4.68E-5
1	200861595	rs968549	C	T	0.95	0.9014	0.65 [0.47-0.89]	8.45E-3	1.00	0.9138	0.72 [0.56-0.92]	1.01E-2	1.00	0.9284	0.71 [0.52-0.98]	3.52E-2	0.7 [0.59-0.83]	4.29E-5
1	203327373	rs115684501	C	T	NA	NA	NA	NA	0.92	0.0082	3.08 [1.4-6.77]	5.01E-3	0.89	0.0059	6.94 [2.22-21.7]	8.55E-4	3.95 [2.05-7.61]	3.97E-5
1	214247966	rs115702239	C	A	NA	NA	NA	NA	0.86	0.0082	4.07 [1.71-9.68]	1.49E-3	0.83	0.0092	3.97 [1.82-8.67]	5.51E-4	4.02 [2.22-7.27]	4.36E-6
1	222319103	rs112891824	C	T	0.64	0.0100	4.97 [1.44-17.2]	1.11E-2	0.99	0.0159	2.26 [1.26-4.06]	6.53E-3	1.00	0.0159	2.19 [1.20-4.01]	1.04E-2	2.41 [1.60-3.62]	2.25E-5
1	242551121	rs34473966	A	C	NA	NA	NA	NA	0.89	0.0116	3.48 [1.85-6.55]	1.11E-4	0.88	0.0115	2.42 [1.12-5.22]	2.49E-2	3.03 [1.84-4.97]	1.24E-5
2	38114198	rs114698213	C	T	NA	NA	NA	NA	0.91	0.0126	2.97 [1.61-5.48]	4.79E-4	0.78	0.0146	2.36 [1.21-4.61]	1.17E-2	2.69 [1.70-4.26]	2.43E-5
2	38249347	rs150622385	G	A	NA	NA	NA	NA	0.85	0.0146	2.30 [1.25-4.25]	7.71E-3	0.80	0.0116	3.88 [1.94-7.73]	1.21E-4	2.87 [1.80-4.57]	9.72E-6
2	43602198	rs185306441	C	A	NA	NA	NA	NA	0.93	0.0137	2.01 [1.05-3.84]	3.51E-2	0.90	0.0120	4.41 [2.26-8.58]	1.28E-5	2.90 [1.80-4.65]	1.07E-5
2	47162883	rs115376562	T	C	NA	NA	NA	NA	0.88	0.0063	2.81 [1.24-6.38]	1.32E-2	0.85	0.0053	12.41 [4.81-32.0]	1.88E-7	5.15 [2.75-9.67]	3.34E-7
2	54643373	rs150765591	T	G	NA	NA	NA	NA	0.78	0.0106	2.87 [1.41-5.86]	3.73E-3	0.79	0.0105	4.21 [1.78-9.98]	1.09E-3	3.33 [1.9-5.82]	2.43E-5
2	84291167	rs184498750	G	T	NA	NA	NA	NA	0.86	0.0131	3.23 [1.76-5.92]	1.49E-4	0.86	0.0079	2.86 [1.20-6.81]	1.75E-2	3.11 [1.88-5.15]	9.83E-6
2	138337791	rs149029025	G	A	NA	NA	NA	NA	0.93	0.0069	3.82 [1.68-8.70]	1.41E-3	0.91	0.0055	4.04 [1.54-10.6]	4.45E-3	3.91 [2.07-7.38]	2.65E-5
2	142907569	rs142306180	C	A	0.92	0.0102	10.55 [4.16-26.8]	7.11E-7	NA	NA	NA	NA	0.95	0.0053	2.89 [1.03-8.16]	4.43E-2	5.88 [2.85-12.2]	1.63E-6
2	172941078	rs2357323	T	C	0.86	0.0053	4.51 [1.1-18.6]	3.68E-2	NA	NA	NA	NA	0.84	0.0089	4.57 [2.09-10.0]	1.44E-4	4.56 [2.23-9.32]	3.23E-5
2	172942149	rs56923699	G	A	0.86	0.0053	4.84 [1.17-20.0]	2.93E-2	NA	NA	NA	NA	0.85	0.0092	4.55 [2.09-9.93]	1.38E-4	4.62 [2.26-9.42]	2.59E-5
2	173111445	rs182271851	A	G	0.81	0.0085	3.08 [1.19-7.98]	2.09E-2	NA	NA	NA	NA	0.94	0.0051	8.84 [3.69-21.2]	1.05E-6	5.48 [2.79-10.8]	7.49E-7
2	226721440	rs377036225	G	A	NA	NA	NA	NA	0.89	0.0105	5.25 [2.45-11.3]	2.04E-5	0.87	0.0157	2.00 [1.06-3.78]	3.23E-2	3.03 [1.84-4.99]	1.39E-5
2	226758606	rs142266733	A	G	NA	NA	NA	NA	0.85	0.0118	4.16 [2.06-8.41]	6.95E-5	0.81	0.0135	2.35 [1.15-4.81]	1.95E-2	3.18 [1.91-5.31]	9.25E-6
2	240384770	rs188643417	G	A	NA	NA	NA	NA	0.83	0.0085	2.42 [1.07-5.49]	3.43E-2	0.88	0.0111	3.81 [2.02-7.18]	3.49E-5	3.19 [1.91-5.33]	9.73E-6

Table E1. Stage I variants of nominal significance identified in the 3-way meta-analysis

Variant Location and Alleles					US cohort				UK cohort				UUS cohort				Stage-I meta-analysis	
Chr	Pos	SNP rsID	REF	EA	R2	EAF	HR [95%CI]	P	R2	EAF	HR [95%CI]	P	R2	EAF	HR [95%CI]	P	HR [95%CI]	P
2	241253363	rs116377902	G	C	NA	NA	NA	NA	0.95	0.0070	3.82 [1.76-8.29]	6.75E-4	0.94	0.0071	2.74 [1.19-6.29]	1.73E-2	3.30 [1.85-5.87]	4.96E-5
2	241397273	rs75406448	A	G	0.67	0.0301	1.99 [1.04-3.81]	3.79E-2	0.97	0.0379	1.79 [1.22-2.62]	2.72E-3	0.97	0.0300	1.72 [1.10-2.69]	1.80E-2	1.80 [1.37-2.35]	2.29E-5
3	20681518	rs73177699	T	G	0.89	0.0174	2.16 [1.11-4.2]	2.30E-2	0.92	0.0122	2.46 [1.29-4.69]	6.07E-3	0.92	0.0068	4.56 [1.90-10.9]	6.75E-4	2.68 [1.76-4.07]	4.27E-6
3	59911730	rs77895452	C	A	0.82	0.0059	6.68 [2.13-21.0]	1.13E-3	NA	NA	NA	NA	0.91	0.0050	4.49 [1.55-13.0]	5.52E-3	5.39 [2.39-12.10]	4.91E-5
3	69741636	rs139644937	T	A	0.96	0.0062	7.63 [2.33-25.0]	7.84E-4	1.00	0.0071	2.74 [1.31-5.74]	7.68E-3	0.99	0.0071	2.59 [1.04-6.43]	4.08E-2	3.23 [1.91-5.48]	1.34E-5
3	75034442	rs142255892	C	T	NA	NA	NA	NA	0.78	0.0107	4.23 [2.07-8.64]	7.39E-5	0.71	0.0108	2.88 [1.30-6.36]	9.13E-3	3.59 [2.09-6.16]	3.54E-6
3	79693632	rs36022026	A	C	0.95	0.0616	1.83 [1.25-2.66]	1.76E-3	0.97	0.0675	1.47 [1.09-1.98]	1.19E-2	0.97	0.0722	1.4 [1.01-1.94]	4.30E-2	1.52 [1.25-1.85]	2.36E-5
3	112828302	rs2178398	C	G	0.99	0.1511	0.73 [0.56-0.95]	2.13E-2	0.96	0.1884	0.74 [0.60-0.91]	4.97E-3	0.97	0.1836	0.75 [0.59-0.94]	1.48E-2	0.74 [0.64-0.85]	2.02E-5
3	145344805	rs368666349	C	A	NA	NA	NA	NA	0.91	0.0069	2.25 [1.22-4.17]	9.74E-3	0.90	0.0096	4.04 [2.02-8.09]	7.91E-5	2.88 [1.80-4.60]	9.57E-6
4	11752169	rs191600377	T	C	NA	NA	NA	NA	0.81	0.0050	6.99 [2.34-20.9]	5.02E-4	0.85	0.0078	3.59 [1.65-7.79]	1.26E-3	4.54 [2.37-8.69]	5.15E-6
4	11982650	rs17260001	G	A	NA	NA	NA	NA	0.90	0.0056	8.38 [3.24-21.70]	1.18E-5	0.90	0.0073	3.22 [1.30-7.95]	1.13E-2	5.17 [2.65-10.10]	1.49E-6
4	12091599	rs192085162	G	A	NA	NA	NA	NA	0.90	0.0056	5.38 [2.21-13.05]	2.02E-4	0.92	0.0065	3.29 [1.26-8.59]	1.53E-2	4.33 [2.23-8.41]	1.51E-5
4	66572997	rs142199841	T	C	0.86	0.0084	3.62 [1.36-9.62]	9.86E-3	0.92	0.0054	4.87 [2.05-11.60]	3.35E-4	NA	NA	NA	NA	4.31 [2.22-8.34]	1.52E-5
4	74459567	rs79914686	T	C	NA	NA	NA	NA	0.82	0.0054	6.24 [2.24-17.40]	4.70E-4	0.81	0.0055	3.58 [1.24-10.3]	1.86E-2	4.82 [2.27-10.20]	4.12E-5
4	76495474	rs28641522	A	G	0.83	0.0067	11.56 [3.45-38.7]	7.14E-5	NA	NA	NA	NA	0.86	0.0061	3.17 [1.26-7.98]	1.44E-2	5.08 [2.36-10.9]	3.22E-5
4	122351715	rs6850444	G	C	0.90	0.3205	0.79 [0.64-0.97]	2.61E-2	0.99	0.3401	0.81 [0.69-0.96]	1.65E-2	0.98	0.3709	0.74 [0.62-0.89]	1.26E-3	0.78 [0.7-0.87]	1.14E-5
4	166645872	rs71618464	T	C	NA	NA	NA	NA	0.93	0.0100	3.19 [1.56-6.50]	1.46E-3	0.91	0.0074	4.62 [1.90-11.2]	7.11E-4	3.66 [2.08-6.44]	6.56E-6
4	175369612	rs139698405	C	T	NA	NA	NA	NA	0.81	0.0079	4.03 [1.57-10.40]	3.69E-3	0.81	0.0059	4.40 [1.76-11.00]	1.58E-3	4.21 [2.15-8.24]	2.69E-5
4	175401693	rs190563090	A	G	NA	NA	NA	NA	0.84	0.0093	2.77 [1.16-6.63]	2.23E-2	0.83	0.0053	11.41 [4.27-30.50]	1.20E-6	5.03 [2.59-9.78]	1.88E-6
5	36581565	rs138830243	C	T	0.82	0.0109	2.93 [1.1-7.81]	3.20E-2	0.86	0.0116	3.07 [1.57-5.98]	9.88E-4	0.84	0.0120	2.41 [1.10-5.27]	2.73E-2	2.81 [1.77-4.46]	1.11E-5
5	96796936	rs138577491	T	C	NA	NA	NA	NA	0.86	0.0063	5.85 [2.44-14.0]	7.56E-5	0.88	0.0061	3.95 [1.49-10.5]	5.92E-3	4.95 [2.55-9.62]	2.30E-6
5	106109149	rs571176768	G	C	0.92	0.0079	2.63 [1.04-6.63]	4.07E-2	0.97	0.0098	3.17 [1.62-6.22]	7.63E-4	0.95	0.0081	2.86 [1.27-6.44]	1.14E-2	2.95 [1.85-4.68]	4.77E-6
5	151623819	rs191657347	A	G	0.92	0.0069	3.74 [1.37-10.2]	1.02E-2	0.93	0.0054	4.51 [1.91-10.70]	6.06E-4	NA	NA	NA	NA	4.19 [2.15-8.16]	2.63E-5
5	154587673	rs536809954	G	A	NA	NA	NA	NA	0.89	0.0055	5.62 [2.38-13.30]	8.48E-5	0.86	0.0075	3.73 [1.54-9.06]	3.62E-3	4.65 [2.48-8.72]	1.75E-6
5	154820302	rs13172001	G	A	NA	NA	NA	NA	0.87	0.0120	3.35 [1.77-6.36]	2.16E-4	0.87	0.0094	2.37 [1.12-5.02]	2.38E-2	2.92 [1.78-4.79]	2.26E-5
6	26118992	rs116594669	C	G	0.76	0.0107	3.52 [1.36-9.09]	9.33E-3	0.89	0.0080	3.57 [1.53-8.37]	3.35E-3	0.89	0.0143	2.02 [1.00-4.06]	4.90E-2	2.77 [1.71-4.49]	3.71E-5

Table E1. Stage I variants of nominal significance identified in the 3-way meta-analysis

Variant Location and Alleles					US cohort				UK cohort				UUS cohort				Stage-I meta-analysis	
Chr	Pos	SNP rsID	REF	EA	R2	EAF	HR [95%CI]	P	R2	EAF	HR [95%CI]	P	R2	EAF	HR [95%CI]	P	HR [95%CI]	P
6	75389935	rs145442342	G	A	0.74	0.0135	2.69 [1.18-6.11]	1.84E-2	0.93	0.0102	2.43 [1.20-4.93]	1.38E-2	0.92	0.0062	4.27 [1.66-11.0]	2.67E-3	2.86 [1.77-4.62]	1.65E-5
6	77044422	rs140590158	C	T	NA	NA	NA	NA	0.92	0.0206	2.61 [1.59-4.29]	1.53E-4	0.90	0.0190	2.2 [1.27-3.81]	4.87E-3	2.43 [1.67-3.53]	3.62E-6
6	84945776	rs116863455	G	A	NA	NA	NA	NA	0.90	0.0086	4.38 [2.17-8.85]	3.73E-5	0.86	0.0075	3.13 [1.20-8.15]	1.98E-2	3.92 [2.21-6.96]	3.16E-6
6	94466663	rs149057325	A	T	0.93	0.0288	1.81 [1.08-3.02]	2.35E-2	0.98	0.0262	2.00 [1.25-3.21]	3.86E-3	0.98	0.0289	1.62 [1.03-2.55]	3.58E-2	1.80 [1.36-2.39]	4.42E-5
6	94498243	rs143246710	C	T	0.94	0.0177	2.23 [1.18-4.24]	1.39E-2	0.97	0.0161	2.09 [1.19-3.65]	9.84E-3	0.97	0.0153	2.11 [1.17-3.81]	1.27E-2	2.14 [1.50-3.04]	2.38E-5
6	94531687	rs144768626	A	G	0.93	0.0176	2.3 [1.2-4.39]	1.17E-2	0.97	0.0168	2.08 [1.21-3.59]	8.30E-3	0.96	0.0159	1.96 [1.08-3.55]	2.63E-2	2.10 [1.48-2.97]	3.43E-5
6	102917669	rs139568075	C	T	NA	NA	NA	NA	0.80	0.0063	4.39 [1.81-10.6]	1.07E-3	0.80	0.0084	3.25 [1.44-7.35]	4.59E-3	3.75 [2.03-6.93]	2.35E-5
6	116041139	rs35483630	G	A	NA	NA	NA	NA	0.89	0.0060	4.47 [1.76-11.40]	1.64E-3	0.86	0.0098	3.72 [1.87-7.40]	1.76E-4	3.98 [2.26-7.03]	1.80E-6
6	116377677	rs181590625	G	A	NA	NA	NA	NA	0.90	0.0052	3.20 [1.11-9.24]	3.12E-2	0.88	0.0088	3.71 [1.81-7.59]	3.29E-4	3.54 [1.92-6.50]	4.89E-5
6	139248572	rs535860622	T	C	0.83	0.0068	3 [1.03-8.72]	4.35E-2	NA	NA	NA	NA	0.89	0.0058	8.84 [3.35-23.40]	1.10E-5	5.44 [2.57-11.50]	9.73E-6
6	143298800	rs149730644	C	T	0.85	0.0066	4.49 [1.33-15.2]	1.58E-2	NA	NA	NA	NA	0.95	0.0054	11.47 [4.50-29.30]	3.26E-7	8.13 [3.74-17.70]	1.19E-7
6	152786447	rs62427038	T	C	NA	NA	NA	NA	0.82	0.0086	3.44 [1.57-7.54]	1.97E-3	0.83	0.0117	2.95 [1.38-6.27]	5.08E-3	3.19 [1.83-5.55]	4.28E-5
6	164521835	rs188589004	G	A	NA	NA	NA	NA	0.82	0.0071	2.96 [1.35-6.48]	6.72E-3	0.83	0.0066	5.47 [2.13-14.10]	4.25E-4	3.76 [2.03-6.94]	2.34E-5
7	1065220	rs183625998	A	G	NA	NA	NA	NA	0.95	0.0054	6.22 [2.60-14.90]	3.95E-5	0.92	0.0055	4.54 [1.93-10.66]	5.13E-4	5.33 [2.86-9.93]	1.36E-7
7	1120020	rs192803195	C	T	NA	NA	NA	NA	0.91	0.0051	6.83 [2.68-17.4]	5.68E-5	0.90	0.0051	3.79 [1.6-9.01]	2.50E-3	5.03 [2.63-9.63]	1.04E-6
7	74953934	rs868964452	A	T	NA	NA	NA	NA	0.62	0.0180	3.21 [1.73-5.97]	2.19E-4	0.64	0.0125	2.21 [1.01-4.84]	4.68E-2	2.8 [1.71-4.59]	4.17E-5
7	75344084	rs117388086	C	A	NA	NA	NA	NA	0.91	0.0110	2.37 [1.19-4.71]	1.42E-2	0.91	0.0158	3.02 [1.67-5.46]	2.70E-4	2.71 [1.71-4.29]	2.23E-5
7	75358307	rs111489307	T	G	0.53	0.0137	3.19 [1.23-8.27]	1.68E-2	0.98	0.0104	3.33 [1.69-6.59]	5.34E-4	0.97	0.0092	2.83 [1.31-6.11]	7.96E-3	3.13 [1.98-4.96]	1.20E-6
7	101163592	rs149406562	C	A	NA	NA	NA	NA	0.93	0.0129	3.8 [2.10-6.87]	9.88E-6	0.94	0.0098	2.76 [1.30-5.85]	8.21E-3	3.38 [2.11-5.43]	4.26E-7
7	103029848	rs142639517	A	G	NA	NA	NA	NA	0.89	0.0082	4.02 [1.96-8.25]	1.47E-4	0.91	0.0050	2.95 [1.25-6.95]	1.35E-2	3.56 [2.03-6.23]	8.79E-6
7	125546344	rs74580469	T	C	NA	NA	NA	NA	0.93	0.0085	3.39 [1.61-7.13]	1.27E-3	0.88	0.0125	3.11 [1.50-6.45]	2.30E-3	3.25 [1.91-5.53]	1.36E-5
7	148106376	rs556475473	T	C	NA	NA	NA	NA	0.85	0.0062	5.33 [2.22-12.8]	1.82E-4	0.86	0.0052	5.17 [2.01-13.3]	6.39E-4	5.26 [2.73-10.10]	6.51E-7
7	152982958	rs73728959	G	A	NA	NA	NA	NA	0.99	0.0093	3.59 [1.70-7.57]	8.10E-4	0.96	0.0104	3.51 [1.60-7.66]	1.67E-3	3.55 [2.05-6.15]	6.53E-6
8	9496015	rs148904289	T	A	NA	NA	NA	NA	0.91	0.0053	3.54 [1.44-8.75]	6.06E-3	0.93	0.0078	3.58 [1.60-8.01]	1.87E-3	3.57 [1.93-6.59]	4.97E-5
8	22381858	rs113465261	T	C	NA	NA	NA	NA	0.90	0.0060	2.90 [1.14-7.41]	2.58E-2	0.90	0.0051	5.20 [2.29-11.80]	8.49E-5	3.99 [2.12-7.50]	1.78E-5
8	23454598	rs193064386	G	T	NA	NA	NA	NA	0.87	0.0067	3.80 [1.69-8.55]	1.28E-3	0.88	0.0062	3.70 [1.53-8.92]	3.63E-3	3.75 [2.04-6.89]	2.01E-5

Table E1. Stage I variants of nominal significance identified in the 3-way meta-analysis

Variant Location and Alleles					US cohort				UK cohort				UUS cohort				Stage-I meta-analysis	
Chr	Pos	SNP rsID	REF	EA	R2	EAF	HR [95%CI]	P	R2	EAF	HR [95%CI]	P	R2	EAF	HR [95%CI]	P	HR [95%CI]	P
8	23626607	rs79562205	C	T	NA	NA	NA	NA	0.93	0.0075	3.64 [1.69-7.83]	9.58E-4	0.91	0.0097	2.91 [1.38-6.14]	4.93E-3	3.26 [1.89-5.63]	2.16E-5
8	80493124	rs116969973	G	A	NA	NA	NA	NA	0.94	0.0122	2.20 [1.22-3.96]	9.08E-3	0.88	0.0126	4.12 [2.02-8.38]	9.57E-5	2.80 [1.77-4.45]	1.21E-5
8	92675281	rs183828688	A	G	NA	NA	NA	NA	0.90	0.0072	7.55 [3.38-16.9]	8.31E-7	0.89	0.0065	3.35 [1.34-8.39]	9.84E-3	5.39 [2.91-9.98]	8.00E-8
8	120287198	rs117931584	A	G	0.72	0.0116	6.09 [2.43-15.3]	1.18E-4	NA	NA	NA	NA	0.84	0.0053	2.95 [1.07-8.11]	3.66E-2	4.37 [2.14-8.92]	4.93E-5
9	4064850	rs147994675	C	T	0.83	0.0113	2.47 [1.02-5.97]	4.43E-2	0.89	0.0107	2.12 [1.07-4.19]	3.15E-2	0.85	0.0130	3.11 [1.62-5.99]	6.68E-4	2.55 [1.66-3.91]	1.84E-5
9	7042171	rs190922348	C	T	0.82	0.0161	2.68 [1.31-5.47]	6.81E-3	0.92	0.0100	2.48 [1.26-4.88]	8.41E-3	0.93	0.0128	2.26 [1.05-4.86]	3.65E-2	2.48 [1.62-3.79]	2.84E-5
9	14343426	rs118165660	G	A	NA	NA	NA	NA	0.79	0.0257	2.53 [1.56-4.10]	1.74E-4	0.76	0.0184	2.08 [1.11-3.90]	2.26E-2	2.36 [1.60-3.48]	1.55E-5
9	24585027	rs113029495	G	A	0.87	0.0060	8.74 [2.78-27.5]	2.04E-4	0.94	0.0062	3.90 [1.74-8.73]	9.60E-4	NA	NA	NA	NA	5.01 [2.56-9.79]	2.45E-6
9	86260066	rs139230397	G	C	NA	NA	NA	NA	0.88	0.0056	4.67 [1.92-11.40]	6.63E-4	0.89	0.0089	3.63 [1.55-8.47]	2.92E-3	4.11 [2.20-7.70]	9.53E-6
9	92489004	rs187088797	C	G	NA	NA	NA	NA	0.88	0.0093	3.16 [1.59-6.29]	1.04E-3	0.91	0.0077	2.89 [1.27-6.55]	1.12E-2	3.05 [1.79-5.21]	4.47E-5
10	4620992	rs142562867	G	A	0.91	0.0112	3.48 [1.48-8.19]	4.34E-3	0.97	0.0160	1.9 [1.13-3.20]	1.55E-2	0.96	0.0142	2.40 [1.19-4.84]	1.42E-2	2.26 [1.54-3.32]	2.96E-5
10	11875431	rs111589468	G	A	0.84	0.0058	7 [2.02-24.3]	2.14E-3	NA	NA	NA	NA	0.89	0.0103	3.33 [1.63-6.78]	9.42E-4	3.99 [2.09-7.60]	2.60E-5
10	43302339	rs139494937	A	T	NA	NA	NA	NA	0.93	0.0170	2.41 [1.37-4.23]	2.19E-3	0.96	0.0086	3.88 [1.79-8.41]	5.70E-4	2.82 [1.78-4.47]	1.05E-5
10	73718436	rs186597433	C	T	0.72	0.0110	3.73 [1.48-9.37]	5.16E-3	NA	NA	NA	NA	0.95	0.0065	5.69 [2.45-13.20]	5.38E-5	4.70 [2.45-9.02]	3.14E-6
10	87849922	rs191887805	C	T	NA	NA	NA	NA	0.87	0.0063	5.87 [2.44-14.10]	7.84E-5	0.85	0.0056	2.66 [1.07-6.58]	3.47E-2	4.06 [2.14-7.73]	1.93E-5
10	120582311	rs117054238	T	C	NA	NA	NA	NA	0.84	0.0081	2.33 [1.10-4.94]	2.67E-2	0.81	0.0058	9.16 [3.39-24.8]	1.25E-5	3.74 [2.04-6.86]	2.08E-5
11	14115243	rs78904863	T	A	0.87	0.0226	3.46 [1.88-6.37]	6.56E-5	0.95	0.0197	1.69 [1.02-2.79]	4.04E-2	0.95	0.0257	1.70 [1.07-2.69]	2.45E-2	1.99 [1.47-2.70]	9.54E-6
11	28663945	rs111945608	T	C	0.70	0.0142	5.14 [2.34-11.3]	4.66E-5	0.91	0.0210	1.64 [1.00-2.70]	4.96E-2	0.93	0.0112	3.19 [1.62-6.26]	7.56E-4	2.45 [1.70-3.52]	1.43E-6
11	30638253	rs189350185	G	T	0.95	0.0075	4.81 [1.82-12.8]	1.58E-3	0.94	0.0073	3.01 [1.42-6.40]	4.04E-3	NA	NA	NA	NA	3.55 [1.94-6.51]	4.17E-5
11	33998481	rs76061348	T	C	NA	NA	NA	NA	0.89	0.0124	2.51 [1.33-4.73]	4.33E-3	0.91	0.0208	2.35 [1.37-4.04]	1.92E-3	2.42 [1.59-3.69]	3.75E-5
11	36108905	rs118080683	C	T	0.54	0.0146	2.9 [1.1-7.64]	3.14E-2	0.92	0.0153	3.01 [1.70-5.33]	1.64E-4	0.89	0.0165	2.20 [1.13-4.30]	2.11E-2	2.69 [1.79-4.04]	1.78E-6
11	44113701	rs186991973	T	C	0.87	0.0121	4.33 [1.99-9.43]	2.24E-4	NA	NA	NA	NA	0.92	0.0064	2.73 [1.16-6.42]	2.17E-2	3.51 [1.92-6.41]	4.52E-5
11	75214357	rs186259260	C	T	NA	NA	NA	NA	0.80	0.0053	3.64 [1.35-9.82]	1.07E-2	0.85	0.0076	5.00 [2.24-11.20]	8.46E-5	4.38 [2.31-8.31]	5.86E-6
11	81937642	rs72940008	C	G	NA	NA	NA	NA	0.85	0.0096	2.58 [1.31-5.11]	6.41E-3	0.83	0.0092	3.64 [1.71-7.74]	7.83E-4	2.99 [1.79-5.01]	3.00E-5
11	123294624	rs118091577	G	T	NA	NA	NA	NA	0.86	0.0073	3.24 [1.75-6.03]	1.95E-4	0.86	0.0062	4.05 [1.75-9.37]	1.10E-3	3.49 [2.11-5.79]	1.22E-6
11	123312059	rs559811602	A	G	NA	NA	NA	NA	0.92	0.0057	8.99 [3.85-21.00]	4.04E-7	0.87	0.0051	3.57 [1.41-9.05]	7.35E-3	6.02 [3.18-11.40]	3.65E-8

Table E1. Stage I variants of nominal significance identified in the 3-way meta-analysis

Variant Location and Alleles					US cohort				UK cohort				UUS cohort				Stage-I meta-analysis	
Chr	Pos	SNP rsID	REF	EA	R2	EAF	HR [95%CI]	P	R2	EAF	HR [95%CI]	P	R2	EAF	HR [95%CI]	P	HR [95%CI]	P
11	126441296	rs189162333	A	G	0.57	0.0155	6.04 [2.37-15.4]	1.69E-4	0.67	0.0147	2.67 [1.33-5.35]	5.61E-3	NA	NA	NA	NA	3.50 [1.98-6.18]	1.51E-5
11	132893929	rs192803572	T	C	NA	NA	NA	NA	0.86	0.0091	4.23 [2.02-8.84]	1.29E-4	0.80	0.0061	3.4 [1.03-11.3]	4.50E-2	4.00 [2.12-7.54]	1.91E-5
11	134086356	rs140676527	G	A	0.83	0.0062	4.63 [1.48-14.5]	8.64E-3	0.92	0.0063	4.79 [2.06-11.20]	2.83E-4	NA	NA	NA	NA	4.74 [2.37-9.46]	1.05E-5
12	5522297	rs150598029	T	G	NA	NA	NA	NA	0.99	0.0053	5.98 [2.49-14.40]	6.51E-5	0.97	0.0078	2.36 [1.14-4.90]	2.13E-2	3.52 [1.98-6.25]	1.81E-5
12	6067283	rs185814268	A	G	NA	NA	NA	NA	0.86	0.0092	4.66 [2.23-9.74]	4.21E-5	0.85	0.0092	3.53 [1.51-8.22]	3.51E-3	4.16 [2.36-7.31]	7.79E-7
12	59333262	rs4760248	G	C	0.99	0.1086	1.63 [1.23-2.16]	6.93E-4	1.00	0.1090	1.28 [1.00-1.62]	4.56E-2	0.99	0.0997	1.32 [1.01-1.72]	3.88E-2	1.38 [1.18-1.61]	4.52E-5
12	77326010	rs117273906	C	T	0.95	0.0091	4.41 [1.8-10.8]	1.18E-3	0.99	0.0129	2.21 [1.20-4.06]	1.09E-2	0.99	0.0120	2.31 [1.14-4.67]	2.06E-2	2.57 [1.69-3.91]	1.07E-5
12	91345195	rs61926456	C	T	NA	NA	NA	NA	0.89	0.0129	3.21 [1.73-5.99]	2.35E-4	0.89	0.0103	2.11 [1.01-4.38]	4.60E-2	2.71 [1.68-4.39]	4.89E-5
12	124110116	rs188979614	C	T	0.85	0.0100	3.13 [1.29-7.59]	1.15E-2	0.93	0.0054	4.17 [1.77-9.8]	1.07E-3	0.92	0.0051	4.77 [1.57-14.5]	5.83E-3	3.88 [2.24-6.75]	1.50E-6
12	124161354	rs190737725	C	T	0.80	0.0090	4.16 [1.48-11.7]	6.90E-3	0.94	0.0053	4.20 [1.77-9.96]	1.12E-3	NA	NA	NA	NA	4.18 [2.13-8.22]	3.32E-5
13	43516465	rs192910570	A	G	NA	NA	NA	NA	0.82	0.0110	4.03 [2.11-7.71]	2.57E-5	0.84	0.0106	2.78 [1.03-7.55]	4.42E-2	3.63 [2.09-6.3]	4.37E-6
13	43523271	rs143441960	T	C	NA	NA	NA	NA	0.85	0.0144	2.99 [1.68-5.32]	2.04E-4	0.83	0.0118	2.52 [1.06-6.01]	3.70E-2	2.84 [1.75-4.63]	2.57E-5
13	50380270	rs35389309	A	G	0.90	0.0060	7.31 [2.39-22.4]	4.91E-4	NA	NA	NA	NA	0.89	0.0073	3.69 [1.58-8.59]	2.50E-3	4.72 [2.33-9.54]	1.61E-5
13	77117893	rs149658103	C	T	0.88	0.0159	2.23 [1.04-4.78]	3.90E-2	0.96	0.0226	1.85 [1.12-3.05]	1.58E-2	0.97	0.0144	2.36 [1.29-4.30]	5.22E-3	2.07 [1.46-2.94]	4.91E-5
13	92556834	rs9556131	T	A	0.92	0.1107	1.39 [1.01-1.93]	4.56E-2	0.98	0.0977	1.57 [1.24-2.00]	2.32E-4	0.97	0.1021	1.33 [1.03-1.73]	3.16E-2	1.45 [1.23-1.70]	5.68E-6
14	53451666	rs182533924	A	T	NA	NA	NA	NA	0.83	0.0072	5.29 [2.32-12.0]	7.24E-5	0.81	0.0067	4.61 [1.51-14.10]	7.21E-3	5.05 [2.58-9.88]	2.25E-6
14	54089652	rs187000606	C	T	NA	NA	NA	NA	0.88	0.0062	4.92 [2.13-11.34]	1.84E-4	0.90	0.0062	3.29 [1.42-7.61]	5.32E-3	4.06 [2.22-7.42]	5.29E-6
14	82049712	rs138142698	A	G	0.81	0.0087	3.78 [1.48-9.68]	5.56E-3	NA	NA	NA	NA	0.92	0.0081	3.78 [1.74-8.22]	7.86E-4	3.78 [2.02-7.07]	3.08E-5
14	92700530	rs117705014	G	A	NA	NA	NA	NA	0.89	0.0118	2.30 [1.26-4.22]	6.99E-3	0.86	0.0093	3.98 [1.96-8.08]	1.35E-4	2.87 [1.80-4.59]	1.03E-5
15	76081200	rs60514164	C	T	0.77	0.0578	2.11 [1.37-3.25]	6.94E-4	0.92	0.0676	1.54 [1.15-2.07]	4.22E-3	0.92	0.0848	1.47 [1.08-1.99]	1.51E-2	1.6 [1.32-1.95]	2.35E-6
15	82159556	rs116962753	T	C	0.66	0.0102	3.13 [1.22-8.01]	1.73E-2	0.80	0.0082	4.33 [1.99-9.40]	2.11E-4	NA	NA	NA	NA	3.83 [2.08-7.04]	1.61E-5
15	101914234	rs35647788	C	T	NA	NA	NA	NA	0.93	0.0069	5.18 [2.35-11.42]	4.60E-5	0.95	0.0098	4.25 [1.78-10.17]	1.14E-3	4.76 [2.62-8.64]	2.96E-7
16	13757971	rs183941002	G	T	NA	NA	NA	NA	0.95	0.0062	5.21 [2.28-11.90]	8.79E-5	0.92	0.0064	11.14 [4.78-26.00]	2.34E-8	7.44 [4.07-13.60]	6.60E-11
16	24509583	rs28510778	C	T	0.75	0.0388	1.92 [1.13-3.25]	1.57E-2	1.00	0.0517	1.48 [1.08-2.02]	1.48E-2	1.00	0.0609	1.48 [1.10-2.00]	9.50E-3	1.53 [1.25-1.88]	4.35E-5
16	29437123	rs71387661	T	C	NA	NA	NA	NA	0.89	0.0246	2.02 [1.30-3.16]	1.95E-3	0.90	0.0151	2.63 [1.36-5.07]	3.90E-3	2.19 [1.51-3.18]	3.97E-5
16	29599816	rs147189264	G	A	NA	NA	NA	NA	0.88	0.0284	1.92 [1.25-2.95]	2.77E-3	0.88	0.0205	2.64 [1.50-4.68]	8.27E-4	2.14 [1.51-3.03]	1.67E-5

Table E1. Stage I variants of nominal significance identified in the 3-way meta-analysis

Variant Location and Alleles					US cohort				UK cohort				UUS cohort				Stage-I meta-analysis	
Chr	Pos	SNP rsID	REF	EA	R2	EAF	HR [95%CI]	P	R2	EAF	HR [95%CI]	P	R2	EAF	HR [95%CI]	P	HR [95%CI]	P
16	29603553	rs34944462	C	T	NA	NA	NA	NA	0.89	0.0284	1.93 [1.26-2.95]	2.64E-3	0.88	0.0204	2.65 [1.50-4.70]	7.97E-4	2.15 [1.52-3.04]	1.55E-5
16	57317482	rs148521985	C	T	NA	NA	NA	NA	0.90	0.0095	2.75 [1.34-5.67]	6.01E-3	0.89	0.0074	3.86 [1.72-8.7]	1.10E-3	3.18 [1.83-5.50]	3.70E-5
16	65985243	rs144433549	G	A	NA	NA	NA	NA	0.88	0.0055	8.02 [3.08-20.9]	2.08E-5	0.89	0.0064	3.11 [1.28-7.56]	1.25E-2	4.91 [2.52-9.56]	2.84E-6
16	83235650	rs11642140	T	C	NA	NA	NA	NA	0.99	0.0584	1.62 [1.19-2.20]	2.06E-3	0.99	0.0559	1.62 [1.17-2.26]	4.13E-3	1.62 [1.29-2.04]	3.58E-5
17	18860566	rs187631060	G	A	NA	NA	NA	NA	0.84	0.0061	4.40 [1.78-10.9]	1.36E-3	0.81	0.0050	10.27 [4.04-26.1]	9.66E-7	6.53 [3.37-12.68]	2.82E-8
17	32965617	rs11650798	G	C	0.61	0.5741	0.69 [0.55-0.88]	2.33E-3	0.98	0.5712	0.82 [0.70-0.96]	1.40E-2	0.98	0.5763	0.81 [0.68-0.96]	1.71E-2	0.79 [0.71-0.88]	1.88E-5
17	78670545	rs187199661	G	A	NA	NA	NA	NA	0.87	0.0061	3.48 [1.45-8.39]	5.34E-3	0.88	0.0071	4.04 [1.75-9.33]	1.06E-3	3.76 [2.02-6.97]	2.73E-5
17	78806880	rs139401580	C	T	NA	NA	NA	NA	0.93	0.0053	4.38 [1.82-10.6]	9.92E-4	0.92	0.0084	3.37 [1.65-6.89]	8.73E-4	3.76 [2.13-6.64]	4.93E-6
18	12796936	rs187303689	G	A	NA	NA	NA	NA	0.95	0.0062	2.63 [1.24-5.57]	1.19E-2	0.93	0.0065	8.12 [3.32-19.9]	4.56E-6	4.1 [2.28-7.36]	2.32E-6
18	12954976	rs191153148	C	T	NA	NA	NA	NA	0.88	0.0053	2.95 [1.12-7.73]	2.79E-2	0.85	0.0055	9.14 [3.26-25.6]	2.53E-5	4.89 [2.39-10.00]	1.43E-5
18	25516518	rs10469051	G	C	1.00	0.0739	1.66 [1.2-2.3]	2.41E-3	1.00	0.0655	1.44 [1.09-1.90]	9.58E-3	1.00	0.0653	1.38 [1.01-1.90]	4.58E-2	1.48 [1.24-1.77]	2.08E-5
18	30461003	rs141194630	T	C	0.81	0.0050	3.41 [1.01-11.6]	4.90E-2	0.87	0.0055	7.26 [3.01-17.5]	1.00E-5	NA	NA	NA	NA	5.70 [2.76-11.80]	2.58E-6
19	1021639	rs150244663	C	T	NA	NA	NA	NA	0.88	0.0278	2.13 [1.33-3.40]	1.54E-3	0.89	0.0210	2.41 [1.34-4.33]	3.13E-3	2.23 [1.54-3.23]	2.24E-5
19	1412576	rs147560834	G	A	NA	NA	NA	NA	0.91	0.0103	2.71 [1.35-5.44]	4.91E-3	0.93	0.0097	2.82 [1.45-5.50]	2.33E-3	2.77 [1.69-4.52]	4.98E-5
19	1412985	rs3893252	C	T	NA	NA	NA	NA	0.82	0.0051	10.40 [3.60-30.0]	1.50E-5	0.99	0.0067	2.18 [1.09-4.35]	2.81E-2	3.57 [1.97-6.49]	2.91E-5
19	1482080	rs78359732	C	A	NA	NA	NA	NA	1.00	0.0106	2.52 [1.34-4.72]	3.92E-3	0.99	0.0100	2.88 [1.51-5.51]	1.37E-3	2.68 [1.69-4.25]	2.60E-5
19	46090283	rs141771937	T	C	NA	NA	NA	NA	1.00	0.0133	2.33 [1.30-4.20]	4.71E-3	0.97	0.0125	4.31 [2.32-8.01]	3.87E-6	3.08 [1.99-4.76]	3.86E-7
19	49909139	rs559050154	G	A	NA	NA	NA	NA	0.91	0.0115	3.64 [1.86-7.14]	1.63E-4	0.88	0.0067	3.25 [1.09-9.68]	3.44E-2	3.54 [1.98-6.31]	1.88E-5
20	10720969	rs78188241	T	C	0.82	0.0211	2.97 [1.58-5.59]	7.15E-4	1.00	0.0301	1.53 [1.00-2.34]	4.81E-2	0.95	0.0212	2.55 [1.53-4.25]	3.35E-4	2.05 [1.52-2.76]	2.11E-6
20	11731982	rs117414348	A	G	NA	NA	NA	NA	0.84	0.0111	3.30 [1.77-6.17]	1.81E-4	0.80	0.0060	3.23 [1.30-8.00]	1.13E-2	3.28 [1.95-5.52]	8.01E-6
20	24359932	rs77942623	T	C	0.82	0.0051	7.75 [2.07-29.00]	2.34E-3	NA	NA	NA	NA	0.92	0.0052	6.97 [2.76-17.58]	3.96E-5	7.21 [3.27-15.90]	9.84E-7
20	36479360	rs76505427	G	T	NA	NA	NA	NA	0.86	0.0061	3.05 [1.31-7.10]	9.52E-3	0.86	0.0074	5.58 [2.54-12.3]	1.92E-5	4.16 [2.31-7.50]	2.03E-6
20	39496129	rs118012081	G	A	NA	NA	NA	NA	0.82	0.0071	2.80 [1.12-7.01]	2.77E-2	0.82	0.0082	6.78 [2.93-15.70]	7.77E-6	4.45 [2.37-8.39]	3.69E-6
20	40341113	rs142276787	T	C	0.88	0.0078	3.34 [1.15-9.65]	2.61E-2	0.95	0.0071	2.76 [1.21-6.28]	1.58E-2	0.94	0.0059	3.15 [1.37-7.25]	7.03E-3	3.02 [1.78-5.12]	3.89E-5
20	42789152	rs12480648	C	T	0.95	0.0063	3.99 [1.21-13.10]	2.28E-2	0.94	0.0060	6.56 [2.41-17.90]	2.35E-4	NA	NA	NA	NA	5.40 [2.47-11.80]	2.38E-5
20	48957748	rs76672992	G	A	0.83	0.0067	4.50 [1.59-12.80]	4.72E-3	0.96	0.0106	2.98 [1.63-5.46]	3.86E-4	0.97	0.0127	2.78 [1.35-5.73]	5.62E-3	3.11 [2.02-4.79]	2.82E-7

Table E1. Stage I variants of nominal significance identified in the 3-way meta-analysis

Variant Location and Alleles					US cohort				UK cohort				UUS cohort				Stage-I meta-analysis	
Chr	Pos	SNP rsID	REF	EA	R2	EA	HR [95%CI]	P	R2	EA	HR [95%CI]	P	R2	EA	HR [95%CI]	P	HR [95%CI]	P
20	61469020	rs71325411	A	G	NA	NA	NA	NA	0.75	0.0335	2.32 [1.49-3.61]	1.96E-4	0.74	0.0287	2.07 [1.20-3.59]	9.33E-3	2.22 [1.57-3.15]	7.70E-6
22	19257205	rs362240	A	G	NA	NA	NA	NA	0.90	0.0093	4.04 [1.94-8.41]	1.86E-4	0.89	0.0101	2.62 [1.35-5.11]	4.63E-3	3.22 [1.94-5.33]	5.48E-6
22	34904345	rs187511566	A	G	NA	NA	NA	NA	0.90	0.0053	6.70 [2.71-16.60]	3.73E-5	0.84	0.0056	3.69 [1.43-9.49]	6.79E-3	5.10 [2.62-9.92]	1.62E-6
22	36599507	rs9306307	A	G	0.89	0.2510	0.71 [0.55-0.91]	7.17E-3	0.96	0.2905	0.78 [0.65-0.93]	5.93E-3	0.97	0.2888	0.79 [0.65-0.97]	2.24E-2	0.77 [0.68-0.87]	1.70E-5
22	38095241	rs79385984	G	A	NA	NA	NA	NA	0.82	0.0104	2.86 [1.47-5.60]	2.09E-3	0.84	0.0077	3.62 [1.50-8.74]	4.21E-3	3.11 [1.81-5.34]	4.03E-5

Table E2. Stage II validation of survival-associated variants identified in stage I.					
Chr	SNP rs ID	Position	EAF	HR [95%CI]	<i>p</i>
1	rs7514663	10762349	0.008	0.91 [0.23-3.68]	0.90
1	rs185926659	94606086	NA	NA	NA
1	rs148192333	100493151	0.004	1.09 [0.27-4.44]	0.90
1	rs111749519	170154993	0.008	0.97 [0.40-2.35]	0.94
1	rs190285902	188069617	0.013	1.07 [0.48-2.42]	0.86
1	rs145551873	188151083	0.016	1.08 [0.53-2.19]	0.84
1	rs11589092	200768521	0.100	0.94 [0.70-1.25]	0.67
1	rs968549	200861595	0.903	1.07 [0.80-1.43]	0.66
1	rs115684501	203327373	0.004	1.91 [0.47-7.74]	0.36
1	rs115702239	214247966	0.008	2.17 [0.8-5.84]	0.13
1	rs112891824	222319103	0.016	1.12 [0.57-2.18]	0.74
1	rs34473966	242551121	NA	NA	NA
2	rs114698213	38114198	0.008	0.47 [0.12-1.88]	0.28
2	rs150622385	38249347	0.008	0.88 [0.32-2.39]	0.81
2	rs185306441	43602198	0.012	1.78 [0.91-3.48]	0.09
2	rs115376562	47162883	0.010	1.24 [0.55-2.80]	0.61
2	rs150765591	54643373	0.008	2.17 [0.96-4.92]	0.06
2	rs184498750	84291167	0.012	2.05 [1.00-4.18]	0.0493
2	rs149029025	138337791	NA	NA	NA
2	rs142306180	142907569	0.008	1.36 [0.56-3.32]	0.50
2	rs2357323	172941078	0.004	0.71 [0.18-2.86]	0.63
2	rs56923699	172942149	0.004	0.71 [0.18-2.86]	0.63
2	rs182271851	173111445	0.004	0.48 [0.12-1.94]	0.30
2	rs377036225	226721440	0.009	0.41 [0.13-1.29]	0.13
2	rs142266733	226758606	0.009	0.41 [0.13-1.29]	0.13
2	rs188643417	240384770	0.006	0.60 [0.15-2.43]	0.48

Table E2. Stage II validation of survival-associated variants identified in stage I.					
Chr	SNP rs ID	Position	EAF	HR [95%CI]	<i>p</i>
2	rs116377902	241253363	0.009	0.39 [0.10-1.56]	0.18
2	rs75406448	241397273	0.045	1.00 [0.65-1.53]	0.99
3	rs73177699	20681518	0.004	2.85 [0.90-9.04]	0.08
3	rs77895452	59911730	0.004	0.54 [0.13-2.27]	0.40
3	rs139644937	69741636	0.011	0.88 [0.41-1.87]	0.74
3	rs142255892	75034442	0.012	1.12 [0.51-2.42]	0.78
3	rs36022026	79693632	0.065	0.94 [0.66-1.33]	0.72
3	rs2178398	112828302	0.176	0.92 [0.72-1.16]	0.47
3	rs368666349	145344805	0.007	1.22 [0.30-4.94]	0.78
4	rs191600377	11752169	0.011	1.81 [0.80-4.11]	0.15
4	rs17260001	11982650	0.008	1.67 [0.61-4.58]	0.32
4	rs192085162	12091599	NA	NA	NA
4	rs142199841	66572997	0.007	0.72 [0.22-2.30]	0.58
4	rs79914686	74459567	0.002	3.95 [0.98-16.0]	0.05
4	rs28641522	76495474	0.007	3.1 [0.98-9.82]	0.05
4	rs6850444	122351715	0.352	0.89 [0.74-1.07]	0.22
4	rs71618464	166645872	0.008	1.56 [0.72-3.38]	0.26
4	rs139698405	175369612	0.009	0.57 [0.18-1.80]	0.34
4	rs190563090	175401693	0.009	0.57 [0.18-1.80]	0.34
5	rs138830243	36581565	0.006	1.13 [0.28-4.55]	0.87
5	rs138577491	96796936	0.010	0.48 [0.15-1.58]	0.23
5	rs571176768	106109149	NA	NA	NA
5	rs191657347	151623819	0.006	1.61 [0.51-5.14]	0.42
5	rs536809954	154587673	0.009	1.00 [0.37-2.70]	1.00
5	rs13172001	154820302	0.011	2.07 [0.97-4.42]	0.06
6	rs116594669	26118992	0.007	0.37 [0.05-2.66]	0.32

Table E2. Stage II validation of survival-associated variants identified in stage I.					
Chr	SNP rs ID	Position	EAF	HR [95%CI]	p
6	rs145442342	75389935	0.011	0.72 [0.29-1.76]	0.47
6	rs140590158	77044422	0.020	0.75 [0.38-1.47]	0.40
6	rs116863455	84945776	0.011	0.87 [0.32-2.35]	0.79
6	rs149057325	94466663	0.027	1.01 [0.60-1.69]	0.97
6	rs143246710	94498243	0.015	0.98 [0.52-1.87]	0.96
6	rs144768626	94531687	0.015	0.99 [0.52-1.88]	0.97
6	rs139568075*	102917669	0.009	0.10 [0.01-0.73]	0.02
6	rs35483630	116041139	0.010	0.67 [0.30-1.52]	0.34
6	rs181590625	116377677	0.008	0.63 [0.25-1.57]	0.32
6	rs535860622	139248572	0.006	1.30 [0.32-5.26]	0.71
6	rs149730644	143298800	NA	NA	NA
6	rs62427038	152786447	0.003	0.86 [0.21-3.48]	0.83
6	rs188589004	164521835	0.007	0.94 [0.30-2.97]	0.91
7	rs183625998	1065220	0.006	0.83 [0.20-3.36]	0.79
7	rs192803195	1120020	0.007	0.81 [0.20-3.28]	0.77
7	rs868964452	74953934	NA	NA	NA
7	rs117388086	75344084	0.012	0.39 [0.12-1.23]	0.11
7	rs111489307	75358307	0.016	0.64 [0.24-1.73]	0.38
7	rs149406562	101163592	0.012	2.00 [0.82-4.91]	0.13
7	rs142639517	103029848	0.010	1.20 [0.49-2.93]	0.68
7	rs74580469	125546344	0.010	0.33 [0.08-1.33]	0.12
7	rs556475473	148106376	NA	NA	NA
7	rs73728959	152982958	0.008	0.55 [0.14-2.23]	0.40
8	rs148904289	9496015	0.010	0.86 [0.27-2.70]	0.80
8	rs113465261	22381858	0.009	1.31 [0.58-2.97]	0.52
8	rs193064386	23454598	0.003	2.77 [0.67-11.5]	0.16

Chr	SNP rs ID	Position	EAF	HR [95%CI]	p
8	rs79562205	23626607	0.012	1.09 [0.48-2.46]	0.84
8	rs116969973	80493124	0.008	1.83 [0.74-4.53]	0.19
8	rs183828688*	92675281	0.007	0.38 [1.08-6.5]	0.03
8	rs117931584	120287198	0.011	0.98 [0.4-2.41]	0.97
9	rs147994675	4064850	0.013	1.13 [0.53-2.44]	0.75
9	rs190922348	7042171	0.010	1.54 [0.67-3.50]	0.31
9	rs118165660	14343426	0.017	1.03 [0.53-2.01]	0.93
9	rs113029495	24585027	0.007	0.79 [0.29-2.14]	0.65
9	rs139230397	86260066	0.003	1.77 [0.25-12.8]	0.57
9	rs187088797	92489004	0.008	1.72 [0.64-4.65]	0.29
10	rs142562867	4620992	0.017	0.82 [0.41-1.67]	0.59
10	rs111589468	11875431	0.006	0.70 [0.17-2.84]	0.62
10	rs139494937	43302339	0.020	1.36 [0.74-2.53]	0.32
10	rs186597433	73718436	0.006	2.31 [0.85-6.32]	0.10
10	rs191887805	87849922	0.007	0.75 [0.24-2.34]	0.62
10	rs117054238	120582311	0.006	2.14 [0.79-5.80]	0.13
11	rs78904863	14115243	0.022	0.55 [0.26-1.18]	0.13
11	rs111945608	28663945	0.019	0.56 [0.24-1.3]	0.18
11	rs189350185	30638253	0.007	0.51 [0.16-1.61]	0.25
11	rs76061348	33998481	0.015	0.68 [0.28-1.66]	0.39
11	rs118080683	36108905	0.029	0.57 [0.31-1.06]	0.07
11	rs186991973	44113701	0.007	2.16 [0.85-5.46]	0.10
11	rs186259260	75214357	0.010	1.17 [0.51-2.66]	0.71
11	rs72940008	81937642	0.013	0.63 [0.23-1.72]	0.37
11	rs118091577	123294624	0.003	NA	0.99
11	rs559811602	123312059	0.001	NA	0.99

Table E2. Stage II validation of survival-associated variants identified in stage I.					
Chr	SNP rs ID	Position	EAF	HR [95%CI]	<i>p</i>
11	rs189162333	126441296	0.023	1.11 [0.62-1.99]	0.73
11	rs192803572	132893929	0.007	0.40 [0.10-1.62]	0.20
11	rs140676527	134086356	0.004	0.40 [0.06-2.85]	0.36
12	rs150598029	5522297	0.010	0.57 [0.21-1.54]	0.27
12	rs185814268	6067283	0.007	1.41 [0.35-5.78]	0.63
12	rs4760248	59333262	NA	NA	NA
12	rs117273906	77326010	0.017	0.70 [0.29-1.71]	0.43
12	rs61926456	91345195	0.016	1.05 [0.51-2.17]	0.89
12	rs188979614	124110116	0.001	NA	0.99
12	rs190737725	124161354	0.002	0.67 [0.09-4.80]	0.69
13	rs192910570	43516465	0.017	0.63 [0.26-1.53]	0.30
13	rs143441960	43523271	0.020	0.72 [0.34-1.54]	0.40
13	rs35389309	50380270	0.001	NA	0.99
13	rs149658103	77117893	0.016	1.33 [0.68-2.60]	0.40
13	rs9556131	92556834	0.097	1.20 [0.88-1.64]	0.25
14	rs182533924	53451666	0.008	1.21 [0.45-3.27]	0.71
14	rs187000606	54089652	0.009	0.96 [0.39-2.34]	0.92
14	rs138142698	82049712	0.002	1.13 [0.28-4.58]	0.87
14	rs117705014	92700530	0.007	1.27 [0.47-3.43]	0.64
15	rs60514164	76081200	0.076	1.42 [1.04-1.93]	0.0256
15	rs116962753	82159556	0.013	0.73 [0.30-1.78]	0.49
15	rs35647788	101914234	0.008	3.12 [1.37-7.11]	0.0067
16	rs183941002	13757971	0.004	1.57 [0.58-4.29]	0.38
16	rs28510778	24509583	0.063	0.98 [0.67-1.43]	0.91
16	rs71387661	29437123	NA	NA	NA
16	rs147189264	29599816	0.025	1.19 [0.66-2.14]	0.57

Table E2. Stage II validation of survival-associated variants identified in stage I.					
Chr	SNP rs ID	Position	EAF	HR [95%CI]	<i>p</i>
16	rs34944462	29603553	0.025	1.19 [0.66-2.14]	0.56
16	rs148521985	57317482	0.002	NA	0.99
16	rs144433549	65985243	0.007	0.59 [0.19-1.87]	0.37
16	rs11642140	83235650	0.057	0.85 [0.57-1.27]	0.43
17	rs187631060	18860566	0.001	1.32 [0.18-9.67]	0.78
17	rs11650798	32965617	0.563	1.08 [0.9-1.29]	0.40
17	rs187199661	78670545	0.007	0.70 [0.22-2.21]	0.55
17	rs139401580	78806880	0.003	2.20 [0.54-8.94]	0.27
18	rs187303689	12796936	0.007	0.47 [0.11-1.92]	0.29
18	rs191153148	12954976	0.007	0.38 [0.09-1.57]	0.18
18	rs10469051	25516518	0.071	1.10 [0.76-1.59]	0.61
18	rs141194630	30461003	0.004	1.07 [0.27-4.32]	0.92
19	rs150244663	1021639	0.021	1.04 [0.61-1.8]	0.88
19	rs147560834	1412576	0.011	0.70 [0.29-1.72]	0.44
19	rs3893252	1412985	0.015	2.09 [1.05-4.15]	0.0357
19	rs78359732	1482080	0.010	0.84 [0.34-2.07]	0.70
19	rs141771937	46090283	0.011	0.73 [0.27-1.98]	0.54
19	rs559050154	49909139	0.003	0.82 [0.20-3.33]	0.78
20	rs78188241	10720969	0.027	1.47 [0.85-2.53]	0.17
20	rs117414348	11731982	0.006	0.81 [0.2-3.26]	0.76
20	rs77942623	24359932	0.004	1.69 [0.62-4.61]	0.31
20	rs76505427	36479360	0.007	1.15 [0.28-4.75]	0.84
20	rs118012081	39496129	0.007	0.45 [0.11-1.81]	0.26
20	rs142276787	40341113	0.010	0.85 [0.31-2.32]	0.75
20	rs12480648	42789152	0.008	0.82 [0.30-2.21]	0.69
20	rs76672992	48957748	0.011	1.88 [0.92-3.82]	0.08

Table E2. Stage II validation of survival-associated variants identified in stage I.					
Chr	SNP rs ID	Position	EAf	HR [95%CI]	p
20	rs71325411	61469020	0.055	1.30 [0.92-1.83]	0.14
22	rs362240	19257205	0.008	1.62 [0.66-3.99]	0.29
22	rs187511566	34904345	0.007	1.75 [0.71-4.29]	0.22
22	rs9306307	36599507	NA	NA	NA
22	rs79385984	38095241	0.017	1.41 [0.72-2.76]	0.31

*p<0.05 but with an opposite direction of effect compared to Stage I

Table E3. Survival association for top variants before and after multivariable adjustment

Variant location (hg19) and nearest gene						Unadjusted		Adjusted model 1*		Adjusted model 2**	
Chr.	Position	SNP rsID	Gene	REF	EA	HR [95% CI]	<i>P</i> -value	HR [95 % CI]	<i>P</i> -value	HR [95 %CI]	<i>P</i> -value
2	84291167	rs184498750	<i>SUCLG1</i>	G	T	3.11 [1.88-5.15]	9.83x10 ⁻⁶	1.84 (1.13-2.99)	0.013	2.02 (1.24-3.28)	0.005
15	76081200	rs60514164	<i>UBE2Q2</i>	C	T	1.6 [1.32-1.95]	2.35x10 ⁻⁶	1.48 (1.20-1.84)	3.11x10 ⁻⁴	1.47 (1.19-1.83)	3.83x10 ⁻⁵
15	101914234	rs35647788	<i>PCSK6</i>	C	T	4.76 [2.62-8.64]	2.96x10 ⁻⁷	4.64 (2.38-9.04)	6.32x10 ⁻⁶	4.18 (2.15-8.15)	2.45x10 ⁻⁵
19	1412985	rs3893252	<i>DAZAP1</i>	C	T	3.57 [1.97-6.49]	2.91x10 ⁻⁵	1.39 (0.74-2.61)	0.304	1.29 (0.68-2.44)	0.432

* Adjusted for baseline GAP stage

** Adjusted for sex and baseline age, FVC (% predicted) and DLCO (% predicted)

Table E4. Characteristics of patients with PCSK6 variant

Patient	Study	Centre	Risk Alleles	Outcome	Survival (months)
1	UK	Edinburgh	1	Death	9.63
2	UK	Edinburgh	1	Death	38.83
3	UK	Edinburgh	1	Death	26.2
4	UK	PROFILE	1	Death	5.62
5	UK	PROFILE	1	Death	7.92
6	UK	Trent Lung	1	Death	38.79
7	UK	Trent Lung	1	Death	19.13
8	UUS	Brompton	1	Death	10
9	UUS	Brompton	1	Death	8
10	UUS	Brompton	1	Death	2
11	UUS	Brompton	1	Alive	10
12	UUS	Chicago	1	Alive	1.18
13	UUS	Chicago	1	Alive	16.79
14	UUS	Chicago	1	Alive	5.36
15	UUS	Chicago	1	Death	20.4
16	UUS	Chicago	1	Alive	7.43
17	UUS	Nottingham	1	Death	6.44
18	UUS	UCD	1	Death	11.89
19	UUS	UCD	1	Alive	22.8

Table E5. Sensitivity analysis comparing PCSK6 results with censoring lung transplant versus considering this an event

	UK		UUS		Meta	
	OR [95% CI]	p	OR [95% CI]	p	OR [95% CI]	p
Transplant as event	5.18 [2.35, 11.42]	4.60E-05	4.25 [1.78, 10.17]	1.14E-03	4.76 [2.62, 8.64]	2.96E-07
Transplant censored	5.23 [2.41, 11.35]	2.83E-05	4.48 [1.87, 10.74]	7.67E-04	4.89 [2.73, 8.73]	8.04E-08

Table E6. <i>In silico</i> functional assessment variants associated with TFS after stage II				
	rs184498750 (<i>SUCLG1</i>)	rs60514164 (<i>UBE2Q2</i>)	rs35647788 (<i>PCSK6</i>)	rs3893252 (<i>DAZAP1</i>)
RegulomedB rank (Score)	5 - TF binding or Dnase peak (0)	5 - TF binding or Dnase peak (0.17)	4 - TF binding + Dnase peak (0.61)	3a - TF binding + any motif + DNase peak (0.73)
Enhancer histone marks [HaploReg]	None	H3K4me1 (Epithelial)	H3K4me1 ^a , H3K27ac ^b	H3K4me1 ^c , H3K27ac ^d
Promoter histone marks [HaploReg]	H3K9ac (Fetal lung)	None	H3K4me3 ^e , H3K9ac ^f	H3K4me3 ^g , H3K9ac ^h
DNase [HaploReg]	None	None	Digestive	HSC & B-cell, Muscle, Fetal Adrenal Gland, Pancreas, Monocytes-CD14+ RO01746 Primary Cells
Altered regulatory motifs [HaploReg]	CIZ, Mef2	AIRE_2, AP-3	ZBTB33	None
Proteins bound [HaploReg]	None	None	None	None
CHICP [Cell line: <i>gene</i> (SCORE)]. A default score of 5 was considered as threshold to identify PCHI-C interactions	None	<u>GM12878</u> : <i>SIN3A</i> (10.01), <i>MAN2C1</i> (9.56), <i>NRG4</i> and <i>C15ORF27</i> (9.33)	<u>CD34</u> : <i>TM2D3</i> (9.90); <u>GM12878</u> : <i>TM2D3</i> (8.65), <i>OR4F6</i> (9.48), <i>OR4F15</i> (9.64), <i>CHSY1</i> (8.04)	<u>Neutrophils</u> : BSG (8.46), POLRMT (5.46); <u>CD34</u> : <i>DAZAP1</i> and <i>RPS15</i> (12.99); <u>GM12878</u> : MUM and <i>EFNA2</i> (10.87); <i>CIRBP</i> and <i>C19orf24</i> (11.40); <i>C19orf26</i> , <i>ATP5D</i> , <i>MIDN</i> , and <i>CIRBP</i> (10.90); <i>SBNO2</i> and <i>STK11</i> (10.41); <i>HMHA1</i> (10.17); <i>WDR18</i> , <i>GRIN3B</i> , and <i>TMEM259</i> (10.52); <i>PTBP1</i> , <i>LPPR3</i> , and <i>AZU1</i> (9.68); <i>CSNK1G2</i> (9.16); <i>KLF16</i> (10.40); <i>ATP8B3</i> and <i>REXO1</i> (10.03); <i>ONECUT3</i> (10.75); <i>TCF3</i> (Scores 9.99 and 10.21); <i>REEP6</i> , <i>PCSK4</i> , and <i>C19orf25</i> (11.65); <i>C19orf25</i> and <i>APC2</i> (12.38); <i>DAZAP1</i> and <i>RPS15</i> (12.95); <u>hESC Derived Cardiomyocytes</u> : <i>CIRBP</i> , <i>CIRBP-AS1</i> and <i>C19orf24</i> (6.59); MUM1 and <i>EFNA2</i> (5.69)
Open Targets Genetics Top ranked genes based on the overall V2G score	<i>AC106874.1</i> (top ranked), <i>SUCLG1</i> , <i>DNAH6</i>	<i>SNUPN</i> (top ranked), <i>MAN2C1</i> , <i>AC105020.1</i> , <i>IMP3</i>	<i>PCSK6</i> (top ranked), <i>PCSK6-AS1</i> , <i>SELENOS</i> , <i>SNRPA1</i>	<i>DAZAP1</i> (top ranked), <i>NDUFS7</i> , <i>AC005329.2</i>
dsQTL [GTEx] Tissue-specific $P \leq 0.05$	None	<i>MAN2C1</i> (Adipose, skin, artery, esophagus)	None	None
eQTL [GTEx] Tissue-specific $P \leq 0.05$	None	<i>MAN2C1</i> (lung, cultured fibroblasts, adipose, skin, artery, esophagus, among others)	None	<i>LLNLR-307A6.1</i> (skin)
Score CAPE dsQTL >0.5 [SNPDeIScore]	NA	None	NA	H1 BMP4 derived trophoblast cultured cells, IMR90 fetal lung fibroblasts cell line, A549 EtOH 0.02pct lung carcinoma cell line, GM12878 lymphoblastoid cells, HeLa-S3 Cervical carcinoma cell line, Monocytes-CD14+ RO01746 Primary cells, NH-A Astrocytes primary cells, NHEK-Epidermal keratinocyte primary cells

Table E6. <i>In silico</i> functional assessment variants associated with TFS after stage II				
	rs184498750 (<i>SUCLG1</i>)	rs60514164 (<i>UBE2Q2</i>)	rs35647788 (<i>PCSK6</i>)	rs3893252 (<i>DAZAP1</i>)
Score CAPE eQTL >0.5 [SNPDeIScore]	NA	iPS DF 6.9 Cells, primary T cells from peripheral blood, foreskin fibroblast primary cells, gastric, ovary, GM12878 lymphoblastoid cells, HSMM skeletal muscle myoblasts cells, HSMM cell derived skeletal muscle myotubes cells, NH-A Astrocytes primary cells	NA	H1 cells, H9 cells, iPS DF 6.9 Cells, iPS DF 19.11 Cells, fetal intestine small, fetal muscle leg, placenta, ovary, HMEC mammary epithelial primary cells, HSMM skeletal muscle myoblasts cells, HSMM cell derived skeletal muscle myotubes cells, NHDF-Ad Adult Dermal Fibroblast primary cells
PheWAS (PhenoScanner)	Allele T has positive/increased effect association with: -Cause of death: hodgkins disease, unspecified ($P=1.51 \times 10^{-6}$) -Self-reported gall bladder disease ($P=1.50 \times 10^{-5}$) -Cause of death: ischaemic cardiomyopathy ($P=3.39 \times 10^{-4}$) - Treatment with dexamethasone ($P=3.65 \times 10^{-4}$)	Allele T has positive/increased effect association with: -Self-reported nasal or sinus disorder ($P=3.98 \times 10^{-5}$) -Zoster ($P=2.17 \times 10^{-4}$) -Treatment with logynon tablet ($P=6.84 \times 10^{-4}$) -Duration of other exercises ($P=9.17 \times 10^{-4}$) Allele T has negative/decreased effect association with: - Treatment with becotide 50 inhaler ($P=5.84 \times 10^{-4}$)	Allele T has positive/increased effect association with: -Self-reported fracture lower leg or ankle ($P=4.39 \times 10^{-5}$) -Self-reported acute infective polyneuritis or Guillain-Barre syndrome ($P=1.16 \times 10^{-4}$) -Self-reported multiple sclerosis ($P=2.27 \times 10^{-4}$) -Cause of death: epilepsy, unspecified ($P=3.61 \times 10^{-4}$) -Polyarthrosis ($P=5.07 \times 10^{-4}$)	Allele T has positive/increased effect association with: -Home area population density: Scotland large urban area ($P=5.09 \times 10^{-5}$) -Self-reported unclassifiable non-cancer illness ($P=1.07 \times 10^{-4}$) -Cause of death: duodenum ($P=1.24 \times 10^{-4}$) -Self-reported thyroid problem ($P=1.74 \times 10^{-4}$) -Cause of death: tongue, unspecified ($P=2.70 \times 10^{-4}$) -Cause of death: vascular dementia, unspecified ($P=3.18 \times 10^{-4}$) - Benign neoplasm of major salivary glands ($P=6.06 \times 10^{-4}$)
<p>CAPE, cellular dependent deactivating mutations; CD34, human hematopoietic progenitor cell line; CHICP, Capture HiC Plotter; dsQTL, DNase I-sensitive quantitative trait loci; eQTL, expression quantitative trait loci; ESC, embryonic stem cells; GM12878, lymphoblastoid cell line; HSC, hematopoietic stem cells; HSMM, human skeletal muscle myoblasts; HUVEC, human umbilical vein endothelial cell; iPS DF 6.9 Cells, human induced pluripotent stem cell line derived from foreskin fibroblasts; IMR90, human fetal lung cells; iPSC, induced pluripotent stem cells; LD, linkage disequilibrium; NH-A, normal human Astrocytes; NHDF, normal human dermal fibroblasts; NHLF, normal human lung fibroblasts; PCHI-C, Promoter Capture Hi-C; TF, transcription factor; V2G, variants to genes.</p> <p>^aESC, iPSC, ES-derive, Blood & T-cell, HSC & B-cell, Epithelial (Foreskin Keratinocyte Primary Cells skin03), Brain, Muscle, Heart, Digestive, Fetal Adrenal Gland, Liver, Pancreas, Lung, Spleen; ^bES-derive, Brain, Digestive, Liver; ^cIMR90, ESC, iPSC, ES-derive, Blood & T-cell, HSC & B-cell, Mesench, Myosat, Epithelial, Neurosoph, Thymus, Brain, Adipose, Muscle, Heart, Sm. Muscle, Digestive, Placenta Amnion, Fetal Lung, Ovary, Fetal Adrenal Gland, Placenta, Liver, Pancreas, Lung, Spleen, A549 EtOH 0.02pct Lung Carcinoma Cell Line, Dnd41 T Cell Leukemia Cell Line, GM12878 Lymphoblastoid Cells, HeLa-S3 Cervical Carcinoma Cell Line, HepG2 Hepatocellular Carcinoma Cell Line, HMEC Mammary Epithelial Primary Cells, HSMM Skeletal Muscle Myoblasts Cells, HUVEC Umbilical Vein Endothelial Primary Cells, K562 Leukemia Cells, NH-A Astrocytes Primary Cells, NHEK-Epidermal Keratinocyte Primary Cells, NHLF Lung Fibroblast Primary Cells, Osteoblast Primary Cells; ^dESC, iPSC, ES-derive, Blood & T-cell, HSC & B-cell, Mesench, Epithelial, Thymus, Brain, Adipose, Muscle, Heart, Sm. Muscle, Digestive, Ovary, Pancreatic Islets, Fetal Adrenal Gland, Placenta, Liver, Pancreas, Lung, Spleen, Dnd41 T Cell Leukemia Cell Line, GM12878 Lymphoblastoid Cells, HeLa-S3 Cervical Carcinoma Cell Line, HUVEC Umbilical Vein Endothelial Primary Cells, K562 Leukemia Cells, Monocytes-CD14+ R001746 Primary Cells, NH-A Astrocytes Primary Cells, NHDF-Ad Adult Dermal Fibroblast Primary Cells, NHLF Lung Fibroblast Primary Cells, Osteoblast Primary Cells; ^eiPSC, Digestive; ^fBlood & T-cell, Epithelial, Digestive; ^giPSC, ES-derive, Blood & T-cell, HSC & B-cell, Mesench, Epithelial, Neurosphil, Brain, Adipose, Muscle, Heart, Sm. Muscle, Digestive, Placenta Amnion, Pancreas, Spleen, Dnd41 T Cell Leukemia Cell Line, GM12878 Lymphoblastoid Cells, HeLa-S3 Cervical Carcinoma Cell Line, HepG2 Hepatocellular Carcinoma Cell Line, Monocytes-CD14+ R001746 Primary Cells, NHLF Lung Fibroblast Primary Cells, Osteoblast Primary Cells; ^hIMR90, ESC, iPSC, ES-derive, Blood & T-cell, Mesench, Epithelial, Brain, Adipose, Muscle, Heart, Sm. Muscle, Digestive, Fetal Lung, Liver, Dnd41 T Cell Leukemia Cell Line, HeLa-S3 Cervical Carcinoma Cell Line, HepG2 Hepatocellular Carcinoma Cell Line, Monocytes-CD14+ R001746 Primary Cells, NH-A Astrocytes Primary Cells, NHEK-Epidermal Keratinocyte Primary Cells, NHLF Lung Fibroblast Primary Cells</p>				

Table E7. Survival association for fifteen genetic variants previously linked to IPF susceptibility

Chr.	Position	SNP rsid	Locus	Ref. allele	Effect allele	EAF	Risk GWAS		Survival GWAS	
							OR* [95% CI]	P-value	HR [95% CI]	P-value
3	44902386	rs78238620	<i>KIF15</i>	T	A	0.08	1.58 [1.37, 1.83]	5.12×10 ⁻¹⁰	0.92 [0.76, 1.13]	0.444
3	169481271	rs12696304	<i>LRRC34</i> <i>/TERC</i>	C	G	0.31	1.31 [1.21, 1.40]	7.09×10 ⁻¹³	0.95 [0.86, 1.06]	0.343
4	89885086	rs2013701	<i>FAM13A</i>	T	G	0.575	1.28 [1.19, 1.35]	3.30×10 ⁻¹³	1.01 [0.92, 1.12]	0.792
5	1282414	rs7725218	<i>TERT</i>	A	G	0.734	1.39 [1.30, 1.49]	1.54×10 ⁻²⁰	0.97 [0.86, 1.09]	0.622
5	169015479	rs1164837831	<i>SPDL1</i>	G	A	0.013	2.40 [1.70-3.40]	7.55×10 ⁻⁷	1.23 [0.81-1.87]	0.327
6	7563232	rs2076295	<i>DSP</i>	T	G	0.573	1.46 [1.37, 1.56]	2.79×10 ⁻³⁰	1.07 [0.97, 1.18]	0.153
7	1909479	rs12699415	<i>MAD1L1</i>	G	A	0.469	1.28 [1.19, 1.37]	7.15×10 ⁻¹³	0.98 [0.89, 1.09]	0.765
7	99630342	rs2897075	7q22.1	C	T	0.408	1.30 [1.21, 1.38]	3.10×10 ⁻¹⁴	1.08 [0.98, 1.20]	0.127
8	120934126	rs28513081	<i>DEPTOR</i>	G	A	0.631	1.22 [1.15, 1.32]	1.20×10 ⁻⁹	0.97 [0.88, 1.08]	0.559
11	1241221	rs35705950	<i>MUC5B</i>	G	T	0.321	4.84 [4.37, 5.36]	1.18×10 ⁻²⁰³	0.78 [0.64, 0.94]	0.008
13	113534984	rs9577395	<i>ATP11A</i>	G	C	0.827	1.30 [1.20, 1.41]	1.34×10 ⁻¹⁰	0.98 [0.85, 1.11]	0.723
15	40720542	rs59424629	<i>IVD</i>	G	T	0.573	1.30 [1.22, 1.41]	7.30×10 ⁻¹⁶	1.12 [1.01, 1.23]	0.028
15	86097216	rs62023891	<i>AKAP13</i>	G	A	0.343	1.27 [1.18, 1.36]	1.27×10 ⁻¹⁰	0.98 [0.88, 1.09]	0.655
17	44214888	rs2077551	<i>MAPT</i>	C	T	0.828	1.41 [1.30, 1.54]	2.83×10 ⁻¹⁶	0.97 [0.84, 1.12]	0.675
19	4717672	rs12610495	<i>DPP9</i>	A	G	0.371	1.31 [1.22, 1.42]	2.92×10 ⁻¹²	0.99 [0.87, 1.11]	0.394

Abbreviations: EAF = effect allele frequency; OR = odds ratio; HR = hazard ratio; CI = confidence interval

*Odds ratios are given with respect to the allele that is associated with increased disease risk

Table E8. Risk association for the four genetic variants linked to IPF survival in the stage I

Chr.	Position	SNP rsid	Locus	Ref. allele	Effect allele	EAF	Risk GWAS	
							OR* [95% CI]	P-value
2	84291167	rs184498750	<i>SUCLG1</i>	G	T	0.01	0.90 [0.66, 1.24]	0.531
15	76081200	rs60514164	<i>UBE2Q2</i>	C	T	0.07	0.93 [0.82, 1.06]	0.298
15	101914234	rs35647788	<i>PCSK6</i>	C	T	0.01	1.01 [0.67, 1.53]	0.947
19	1412985	rs3893252	<i>DAZAP1</i>	C	T	0.01	0.74 [0.50, 1.11]	0.146

Abbreviations: EAF = effect allele frequency; OR = odds ratio; HR = hazard ratio; CI = confidence interval

*Odds ratios are given with respect to the allele that is associated with increased disease risk

Supplementary References

1. Allen RJ, Guillen-Guio B, Oldham JM, et al. Genome-Wide Association Study of Susceptibility to Idiopathic Pulmonary Fibrosis. *Am J Respir Crit Care Med* 2020;201:564-74.
2. Allen RJ, Porte J, Braybrooke R, et al. Genetic variants associated with susceptibility to idiopathic pulmonary fibrosis in people of European ancestry: a genome-wide association study. *Lancet Respir Med* 2017;5:869-80.
3. Fingerlin TE, Murphy E, Zhang W, et al. Genome-wide association study identifies multiple susceptibility loci for pulmonary fibrosis. *Nat Genet* 2013;45:613-20.
4. Noth I, Zhang Y, Ma SF, et al. Genetic variants associated with idiopathic pulmonary fibrosis susceptibility and mortality: a genome-wide association study. *Lancet Respir Med* 2013;1:309-17.
5. Euesden J, Lewis CM, O'Reilly PF. PRSice: Polygenic Risk Score software. *Bioinformatics* 2015;31:1466-8.
6. Joseph C, Alsaleem M, Orah N, et al. Elevated MMP9 expression in breast cancer is a predictor of shorter patient survival. *Breast Cancer Res Treat* 2020;182:267-82.