

**Supplemental Table 1. Multiple Linear Regression: ≤30 days post-SARS-CoV-2 symptom onset**

AAB	Variable	Estimate	95% CI (asymptotic)	P value	P value summary
<b>SSA/Ro60</b>					
β0	Intercept	1.68	1.486 to 1.875	<0.0001	****
β1	SARS-CoV-2	0.2011	0.0009555 to 0.4013	0.0489	*
β2	Sex: Female	-0.2313	-0.4473 to -0.01525	0.0361	*
β3	Race: White	-0.1901	-0.3949 to 0.01466	0.0684	ns
β4	Ethnicity: Hispanic/Latino	-0.2445	-0.5428 to 0.05381	0.1071	ns
β5	Lung Disease	0.2659	0.02635 to 0.5055	0.03	*
β6	Immunosuppressed	-0.2912	-0.6177 to 0.03527	0.0798	ns
<b>SSB/La</b>					
β0	Intercept	1.668	1.505 to 1.831	<0.0001	****
β1	SARS-CoV-2	0.3131	0.07997 to 0.5463	0.009	**
β2	Heart Disease	0.3233	0.01018 to 0.6365	0.0431	*
β3	Immunosuppressed	-0.2845	-0.6659 to 0.09689	0.142	ns
<b>RNP/Sm</b>					
β0	Intercept	1.305	1.157 to 1.452	<0.0001	****
β1	SARS-CoV-2	0.2857	0.07484 to 0.4966	0.0084	**
β2	Heart Disease	0.265	-0.01820 to 0.5482	0.0663	ns
β3	Immunosuppressed	-0.4536	-0.7984 to -0.1087	0.0105	*
<b>Sm</b>					
β0	Intercept	2.056	1.902 to 2.209	<0.0001	****
β1	SARS-CoV-2	0.2178	0.003095 to 0.4325	0.0468	*
β2	Heart Disease	0.3153	0.02574 to 0.6049	0.0331	*
β3	Lung Disease	0.1824	-0.06693 to 0.4317	0.1498	ns
β4	Immunosuppressed	-0.5201	-0.8721 to -0.1681	0.0042	**
<b>Proteinase 3</b>					
β0	Intercept	2.019	1.774 to 2.263	<0.0001	****
β1	SARS-CoV-2	0.432	0.2892 to 0.5748	<0.0001	****
β2	Age	-0.00364	-0.007816 to 0.0005340	0.0867	ns
β3	Sex: Female	-0.1587	-0.2993 to -0.01798	0.0275	*
β4	Race: Black	0.1851	0.04975 to 0.3204	0.0079	**
β5	HIV	0.2106	0.02374 to 0.3975	0.0276	*
β6	Immunosuppressed	-0.2112	-0.4285 to 0.006177	0.0567	ns
<b>Myeloperoxidase</b>					
β0	Intercept	0.9201	0.5877 to 1.252	<0.0001	****
β1	SARS-CoV-2	0.378	0.2100 to 0.5461	<0.0001	****
β2	Age	0.004616	-0.0008467 to 0.01008	0.0967	ns
β3	Sex: Female	-0.167	-0.3482 to 0.01424	0.0705	ns
β4	Race: White	-0.1576	-0.3229 to 0.007706	0.0614	ns
β5	Lung Disease	0.296	0.09918 to 0.4928	0.0036	**
β6	Autoimmune	0.3435	0.1323 to 0.5547	0.0017	**
β7	Immunosuppressed	-0.4635	-0.7245 to -0.2024	0.0007	***
β8	Hypertension	-0.1903	-0.3896 to 0.009076	0.0612	ns
<b>B-2-Glycoprotein</b>					
β0	Intercept	1.492	1.150 to 1.835	<0.0001	****
β1	SARS-CoV-2	0.2997	0.1007 to 0.4987	0.0035	**
β2	Age	0.00586	2.735e-005 to 0.01169	0.049	*
β3	HIV	0.2454	-0.01860 to 0.5094	0.0681	ns
<b>CENP-A</b>					
β0	Intercept	2.612	2.389 to 2.836	<0.0001	****
β1	SARS-CoV-2	0.1824	-0.06095 to 0.4257	0.1401	ns
β2	Race: White	-0.2612	-0.5029 to -0.01959	0.0344	*
β3	Heart Disease	0.3788	0.05359 to 0.7040	0.0229	*
β4	Autoimmune	0.2852	-0.01848 to 0.5889	0.0654	ns
β5	Immunosuppressed	-0.367	-0.7588 to 0.02476	0.066	ns
<b>CENP-B</b>					
β0	Intercept	1.526	1.234 to 1.818	<0.0001	****
β1	SARS-CoV-2	0.4495	0.09084 to 0.8082	0.0146	*
β2	Sex: Female	-0.3555	-0.7202 to 0.009142	0.0559	ns
β3	Ethnicity: Hispanic/Latino	0.3737	-0.1114 to 0.8587	0.1295	ns
β4	HIV	0.6565	0.1900 to 1.123	0.0063	**
β5	Lung Disease	0.4236	0.02204 to 0.8251	0.0389	*
β6	Immunosuppressed	-0.376	-0.9135 to 0.1614	0.1682	ns
<b>Scl--70</b>					
β0	Intercept	2.202	2.047 to 2.357	<0.0001	****
β1	SARS-CoV-2	0.1669	-0.03804 to 0.3717	0.1093	ns
β2	Ethnicity: Hispanic/Latino	0.229	-0.06529 to 0.5233	0.1258	ns
β3	Hypertension	0.2405	0.03018 to 0.4508	0.0254	*
<b>Jo-1</b>					
β0	Intercept	2.099	1.902 to 2.296	<0.0001	****
β1	SARS-CoV-2	0.6084	0.3663 to 0.8505	<0.0001	****
β2	HIV	0.5682	0.2554 to 0.8811	0.0005	***
β3	DM	-0.3907	-0.7023 to -0.07907	0.0145	*
β4	Heart Disease	0.253	-0.07959 to 0.5857	0.1343	ns

$\beta_5$	Lung Disease	0.2655	0.0009944 to 0.5300	0.0492	*
$\beta_6$	Immunosuppressed	-0.7157	-1.088 to -0.3430	0.0002	***
$\beta_7$	Hypertension	0.2666	-0.01109 to 0.5442	0.0597	ns
<b>Ku</b>					
$\beta_0$	Intercept	2.286	2.115 to 2.456	<0.0001	****
$\beta_1$	SARS-CoV-2	0.3736	0.1430 to 0.6042	0.0018	**
$\beta_2$	Immunosuppressed	-0.5398	-0.9009 to -0.1788	0.0038	**
$\beta_3$	Hypertension	0.3577	0.1186 to 0.5968	0.0037	**
<b>PL-12</b>					
$\beta_0$	Intercept	2.088	1.906 to 2.271	<0.0001	****
$\beta_1$	SARS-CoV-2	0.4864	0.2596 to 0.7132	<0.0001	****
$\beta_2$	Sex: Female	-0.3525	-0.5823 to -0.1226	0.003	**
$\beta_3$	HIV	0.4416	0.1440 to 0.7392	0.004	**
$\beta_4$	Lung Disease	0.2938	0.03958 to 0.5479	0.0239	*

**Supplemental Table 2. Multiple Linear Regression:  $\geq 90$  days post-SARS-CoV-2 symptom onset**

AAB	Variable	Estimate	95% CI (asymptotic)	P value	P value summary
<b>SSB/La</b>					
$\beta_0$	Intercept	1.286	0.8832 to 1.688	<0.0001	****
$\beta_1$	SARS-CoV-2	0.4551	0.2182 to 0.6920	0.0002	***
$\beta_2$	Race: White	0.379	-0.003725 to 0.7617	0.0522	ns
$\beta_3$	Race: Black	0.4995	0.07138 to 0.9276	0.0227	*
$\beta_4$	DM	0.3125	-0.03056 to 0.6556	0.0737	ns
$\beta_5$	Hypertension	-0.2559	-0.5504 to 0.03854	0.0877	ns
<b>RNP/Sm</b>					
$\beta_0$	Intercept	1.544	1.185 to 1.902	<0.0001	****
$\beta_1$	SARS-CoV-2	0.2544	0.04861 to 0.4602	0.0159	*
$\beta_2$	Age	-0.00458	-0.01085 to 0.001693	0.1507	ns
<b>Sm</b>					
$\beta_0$	Intercept	2.088	1.946 to 2.229	<0.0001	****
$\beta_1$	SARS-CoV-2	0.2672	0.06707 to 0.4673	0.0094	**
<b>Proteinase 3</b>					
$\beta_0$	Intercept	1.988	1.855 to 2.122	<0.0001	****
$\beta_1$	SARS-CoV-2	0.4433	0.3031 to 0.5836	<0.0001	****
$\beta_2$	Sex: Female	-0.1384	-0.2741 to -0.002598	0.0459	*
$\beta_3$	Race: White	-0.1568	-0.2912 to -0.02233	0.0227	*
$\beta_4$	Autoimmune	0.2258	0.05608 to 0.3955	0.0096	**
$\beta_5$	Immunosuppressed	-0.2659	-0.4806 to -0.05128	0.0157	*
<b>Myeloperoxidase</b>					
$\beta_0$	Intercept	1.064	0.9313 to 1.196	<0.0001	****
$\beta_1$	SARS-CoV-2	0.2047	0.04608 to 0.3633	0.012	*
$\beta_2$	Race: Black	0.2063	0.02179 to 0.3909	0.0288	*
$\beta_3$	Hypertension	-0.189	-0.3749 to -0.003120	0.0463	*
<b>B-2-Glycoprotein</b>					
$\beta_0$	Intercept	1.489	1.150 to 1.828	<0.0001	****
$\beta_1$	SARS-CoV-2	0.313	0.1142 to 0.5119	0.0023	**
$\beta_2$	Age	0.007024	0.0008989 to 0.01315	0.025	*
$\beta_3$	HIV	0.2434	-0.01196 to 0.4988	0.0615	ns
$\beta_4$	Heart Disease	-0.2666	-0.5333 to 0.0001302	0.0501	ns
$\beta_5$	Lung Disease	-0.1793	-0.4331 to 0.07456	0.1642	ns
<b>PCNA</b>					
$\beta_0$	Intercept	2.527	2.281 to 2.772	<0.0001	****
$\beta_1$	Race: White	-0.3416	-0.6084 to -0.07482	0.0126	*
$\beta_2$	HIV	-0.271	-0.6189 to 0.07695	0.1254	ns
$\beta_3$	Lung Disease	-0.2565	-0.5996 to 0.08668	0.1412	ns
$\beta_4$	Autoimmune	-0.378	-0.7094 to -0.04654	0.0258	*
<b>Sci-70</b>					
$\beta_0$	Intercept	2.28	2.119 to 2.442	<0.0001	****
$\beta_1$	SARS-CoV-2	0.3295	0.1251 to 0.5339	0.0019	**
$\beta_2$	Lung Disease	-0.2229	-0.4982 to 0.05242	0.1114	ns
$\beta_3$	Hypertension	0.1747	-0.06295 to 0.4123	0.1479	ns
<b>Jo-1</b>					
$\beta_0$	Intercept	2.145	1.933 to 2.356	<0.0001	****
$\beta_1$	SARS-CoV-2	0.395	0.1446 to 0.6453	0.0023	**
$\beta_2$	Ethnicity: Hispanic/Latino	0.2746	-0.06032 to 0.6096	0.1069	ns
$\beta_3$	HIV	0.2711	-0.05906 to 0.6012	0.1064	ns
$\beta_4$	Hypertension	0.2224	-0.04317 to 0.4880	0.0997	ns

<b>Ku</b>						
$\beta_0$	Intercept	2.494	2.241 to 2.746	<0.0001	****	
$\beta_1$	SARS-CoV-2	0.2811	0.04983 to 0.5124	0.0177	*	
$\beta_2$	Race: White	-0.1801	-0.4131 to 0.05294	0.1283	ns	
$\beta_3$	HIV	-0.2162	-0.5259 to 0.09346	0.169	ns	
$\beta_4$	Lung Disease	-0.2733	-0.5639 to 0.01735	0.065	ns	
$\beta_5$	Hypertension	0.2398	-0.02294 to 0.5025	0.0732	ns	
<b>PL-12</b>						
$\beta_0$	Intercept	2.446	2.082 to 2.809	<0.0001	****	
$\beta_1$	SARS-CoV-2	0.3867	0.1606 to 0.6128	0.001	***	
$\beta_2$	Age	-0.00584	-0.01196 to 0.0002785	0.0612	ns	
$\beta_3$	Sex: Female	-0.1595	-0.3722 to 0.05321	0.14	ns	
$\beta_4$	HIV	0.2576	-0.02764 to 0.5427	0.0762	ns	

**Supplemental Table 3.** Poisson multiple linear regression of  $\leq 30$  days PSO and pre-pandemic samples

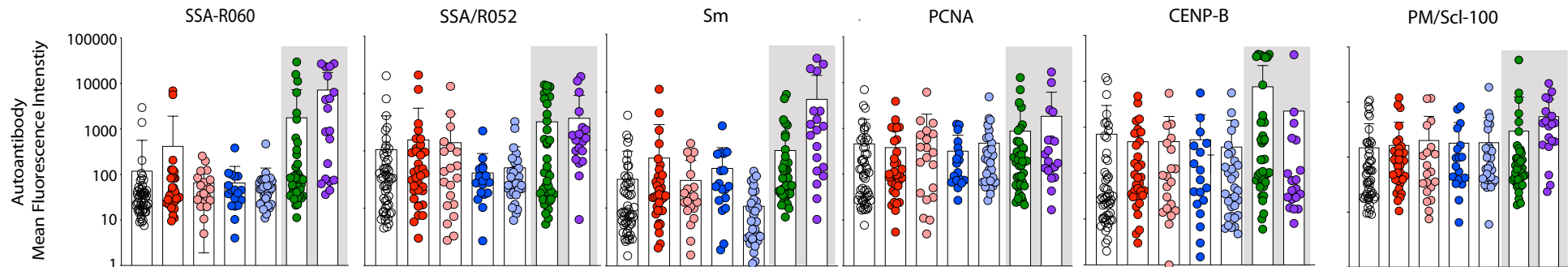
Parameter estimates	Variable	Estimate	95% CI (profile likelihood)	P value
$\beta_0$	Intercept	2.977	2.503 to 3.541	<0.0001
$\beta_1$	SARS-CoV-2	1.551	1.254 to 1.919	<0.0001
$\beta_2$	Female sex	0.813	0.647 to 1.022	0.0761
$\beta_3$	Heart disease	1.675	1.315 to 2.134	<0.0001
$\beta_4$	Immunosuppression	0.604	0.418 to 0.872	0.0072

**Supplemental Table 4.** Poisson multiple Linear Regression of  $\geq 90$  days PSO and pre-pandemic individuals

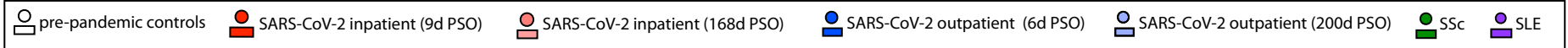
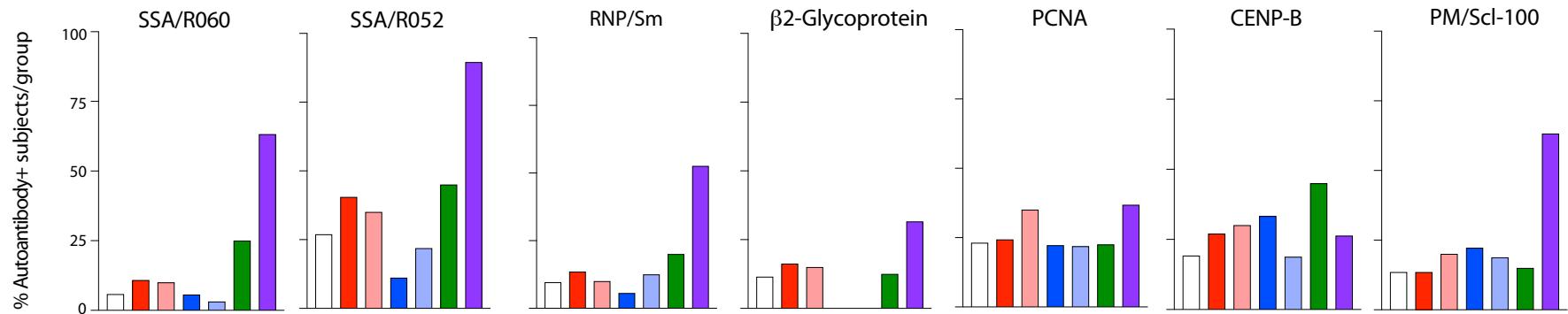
Parameter estimates	Variable	Estimate	95% CI (profile likelihood)	P value
$\beta_0$	Intercept	2.798	2.300 to 3.404	<0.0001
$\beta_1$	SARS-CoV-2	1.662	1.342 to 2.059	<0.0001
$\beta_2$	Black race	1.250	0.998 to 1.566	0.0526
$\beta_3$	Lung disease	0.631	0.464 to 0.860	0.0035

Supplemental Figure 1.

A



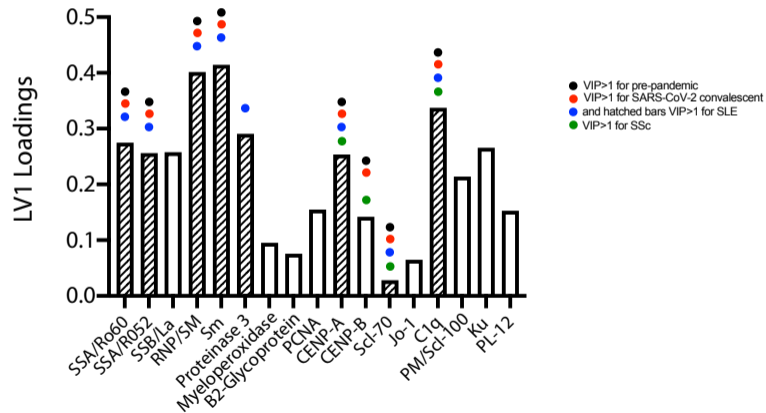
B



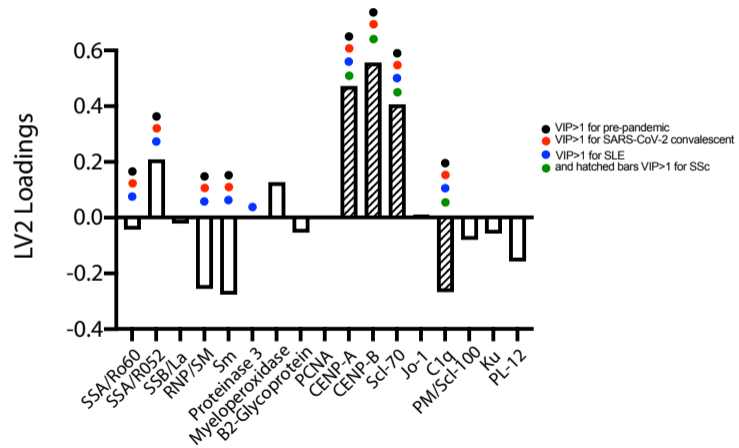


Supplemental Figure 3

A

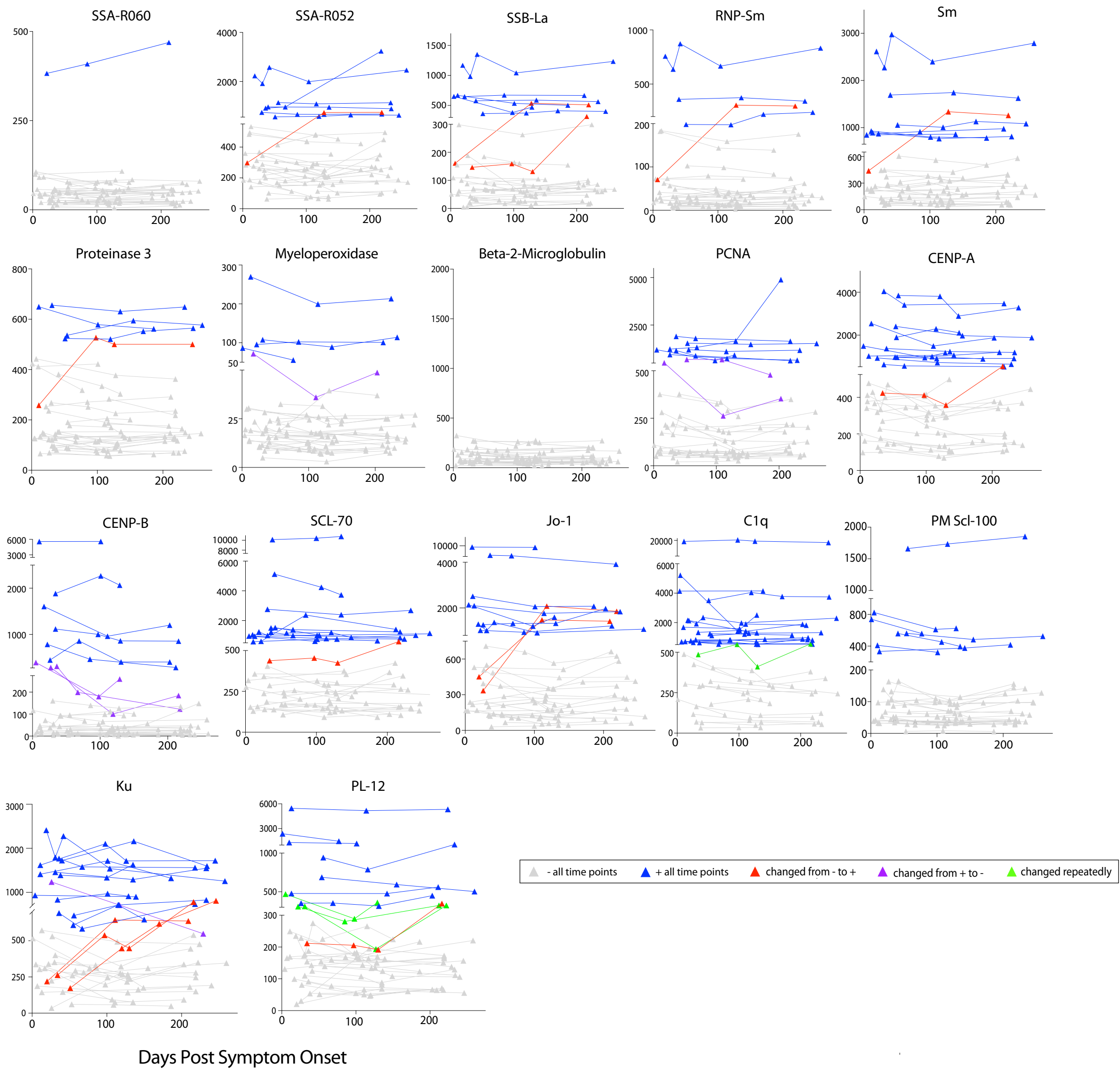


B



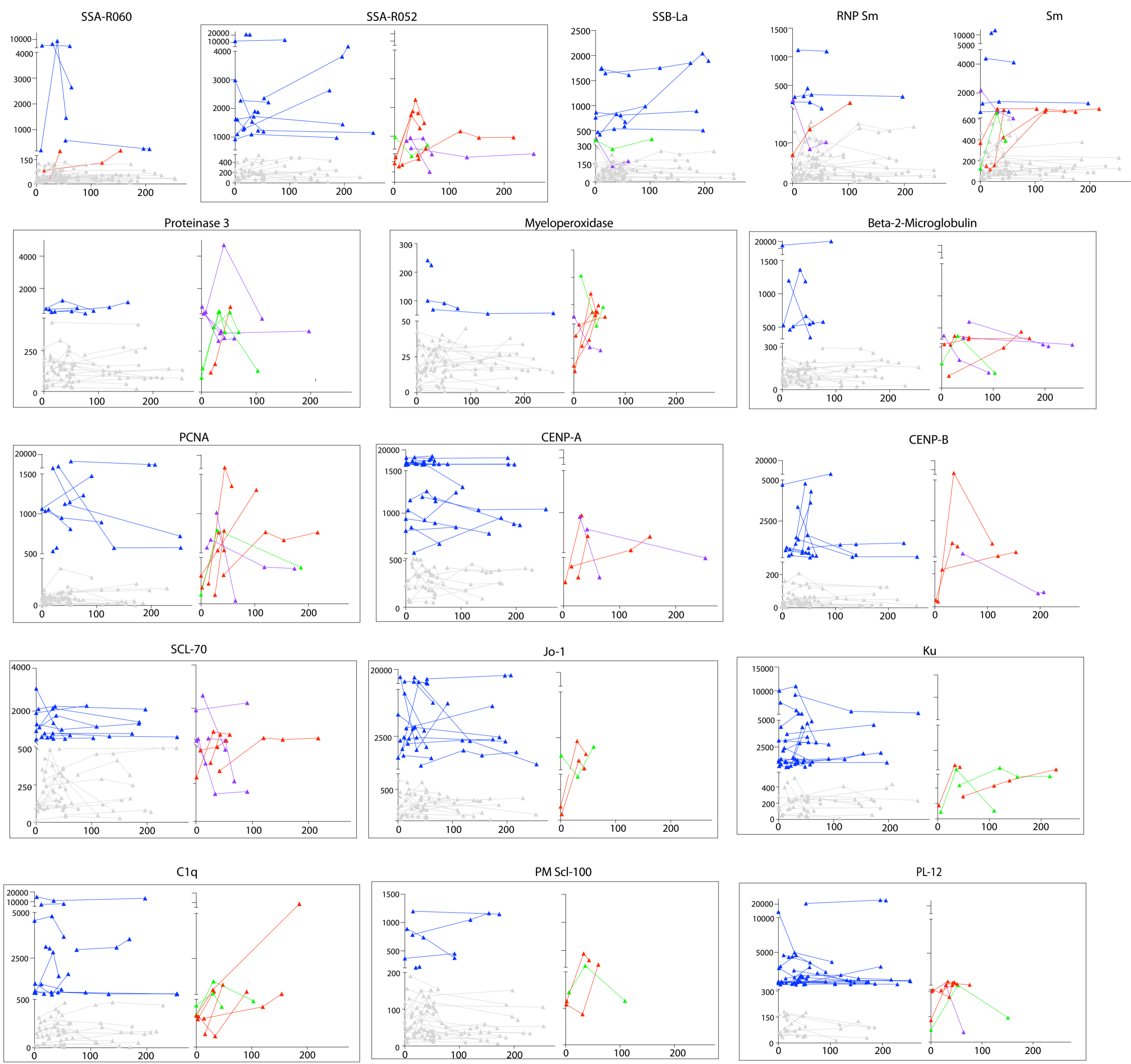
Supplemental Figure 4.

Autoantibody Mean Fluorescence Intensity



Supplemental Figure 5.

Autoantibody Mean Fluorescence Intensity



Days Post Symptom Onset

- all time points    + all time points    changed from - to +    changed from + to -    changed repeatedly