

**Supplementary eTable 1 Additional clinical features of antisynthetase syndrome in this study**

	<b>Anti-ARS antibody</b>							
	<b>All ARS</b> (n = 212)	<b>Jo-1</b> (n = 65)	<b>OJ</b> (n = 20)	<b>PL-7</b> (n = 20)	<b>PL-12</b> (n = 11)	<b>EJ</b> (n = 10)	<b>KS</b> (n = 1)	<b>ARS_NOS</b> (n = 85)
Adult ( $\geq$ 18 years old)	208 (98.1)	64 (98.5)	20 (100.0)	19 (95.0)	11 (100.0)	10 (100.0)	0	84 (98.8)
Woman	128 (60.4)	40 (61.5)	9 (45.0)	11 (55.0)	5 (45.5)	6 (60.0)	1 (100.0)	56 (65.9)
Immunotherapy at the time of biopsy	53 (25.0)	12 (18.5)	6 (30.0)	5 (25.0)	2 (18.2)	1 (10.0)	0	27 (31.8)
Malignancy	17 (8.0)	6 (9.2)	3 (15.0)	0	1 (9.1)	0	0	7 (8.2)

Continuous data is shown as mean and  $\pm$  standard deviation while categorical data is reported as number and (percentage).

Abbreviations: ARS, anti-tRNA synthetase; NOS, not otherwise specified.

**Supplementary eTable 2 Muscle fiber domain scores in antisynthetase syndrome**

	<b>Anti-ARS antibody</b>							
	<b>All ARS</b> (n = 212)	<b>Jo-1</b> (n = 65)	<b>OJ</b> (n = 20)	<b>PL-7</b> (n = 20)	<b>PL-12</b> (n = 11)	<b>EJ</b> (n = 10)	<b>KS</b> (n = 1)	<b>ARS_NOS</b> (n = 85)
<b>Muscle fiber domain</b>								
Total Score	3.0±1.8	2.5±1.4*	4.6±2.0*	3.1±2.1	2.5±1.9	4.7±2.1*	4.0	2.8±1.7
Necrotic fiber score	1.1±0.8	0.9±0.7*	1.7±0.6*	1.3±0.6	0.7±0.8	1.3±0.8	2.0	2.5±1.4
Regenerating fiber score	0.6±0.5	0.6±0.5	0.9±0.4*	0.6±0.5	0.4±0.5	0.8±0.4	1.0	0.6±0.5
Atrophic fiber score	0.7±0.8	0.6±0.7*	1.0±0.9	0.7±0.9	0.8±0.9	1.2±0.8	0	0.7±0.8
PFA score	0.2±0.6	0.1±0.4*	0.7±0.9*	0.3±0.7	0.3±0.6	0.8±0.8	1.0	0.2±0.5
Fiber with internalized nuclei score	0.3±0.5	0.3±0.5	0.3±0.5	0.2±0.4	0.3±0.5	0.6±0.5	0	0.2±0.4
Fiber with internalized nuclei >3%	60 (28.3)	22 (33.8)	6 (30.0)	4 (21.1)	3 (27.3)	6 (54.5)	0	19 (22.4)

Continuous data is shown as mean and ± standard deviation while categorical data is reported as number and (percentage).

Abbreviations: ARS, anti-tRNA synthetase; NOS, not otherwise specified; PFA, perifascicular atrophy

\*p < 0.05 compared to the other antibody subtypes

**Supplementary eTable 3 Inflammatory domain in antisynthetase syndrome**

	Anti-ARS antibody							
	All ARS (n = 212)	Jo-1 (n = 65)	OJ (n = 20)	PL-7 (n = 20)	PL-12 (n = 11)	EJ (n = 10)	KS (n = 1)	ARS_NOS (n = 85)
<b>Inflammatory domain</b>								
Total Score	4.9±3.0 <sup>a</sup>	4.9±3.2 <sup>b</sup>	6.8±3.2*	4.2±1.9	2.6±1.5 <sup>c*</sup>	4.5±3.0	2.0	5.0±3.0 <sup>b</sup>
Endomysial CD3 infiltration	0.7±0.8 <sup>a</sup>	0.8±0.8 <sup>b</sup>	1.1±0.9	0.8±0.5	0.1±0.3 <sup>c*</sup>	0.7±0.8	0	0.7±0.7 <sup>b</sup>
Perimysial CD3 infiltration	0.3±0.6 <sup>a</sup>	0.3±0.7 <sup>b</sup>	0.6±0.7	0*	0 <sup>c*</sup>	0.2±0.4	0	0.3±0.6 <sup>b</sup>
Endomysial CD20 infiltration	0.4±0.7 <sup>a</sup>	0.5±0.7 <sup>b</sup>	0.7±0.7	0.4±0.6	0.1±0.3 <sup>c*</sup>	0.2±0.4	0	0.4±0.7 <sup>b</sup>
Perimysial CD20 infiltration	0.2±0.5 <sup>a</sup>	0.2±0.5 <sup>b</sup>	0.3±0.6	0.2±0.4	0 <sup>c*</sup>	0.1±0.3	0	0.3±0.6 <sup>b</sup>
Endomysial CD68 infiltration	1.6±0.5 <sup>a</sup>	1.6±0.6 <sup>b</sup>	1.9±0.4*	1.7±0.5	1.3±0.7 <sup>c</sup>	1.7±0.7	0	1.6±0.5 <sup>b</sup>
Perimysial CD68 infiltration	1.1±0.8 <sup>a</sup>	1.0±0.8 <sup>b</sup>	1.6±0.7*	0.8±0.8	0.8±0.7 <sup>c</sup>	1.2±0.9	0	1.3±0.7 <sup>b</sup>
Perivascular inflammatory cell infiltration score	0.4±0.5	0.4±0.5	0.8±0.4*	0.4±0.5	0.2±0.4	0.4±0.5	0	0.4±0.5
Perivascular inflammatory cell infiltration	87 (41.0)	26 (40.0)	15 (75.0)*	7 (35.0)	2 (18.2)	4 (40.0)	0	33 (38.8)

Categorical data is reported as number and (percentage).

Abbreviations: ARS, anti-tRNA synthetase; nos, not otherwise specified; PM-Fr, perimysial fragmentation; PM-ALP, increased perimysial alkaline phosphatase activity; NOS, not otherwise specified.

<sup>a</sup>Four cases were excluded from the analysis due to artifacts

<sup>b</sup>One case was excluded from the analysis due to artifacts

<sup>c</sup>Two cases were excluded from the analysis due to artifacts

\*p < 0.05 compared to the other antibody subtypes

**Supplementary eTable 4 Additional histological features of interest**

	Anti-ARS antibody							ARS_NOS (n = 85)
	All ARS (n = 212)	Jo-1 (n = 65)	OJ (n = 20)	PL-7 (n = 20)	PL-12 (n = 11)	EJ (n = 10)	KS (n = 1)	
CD8 infiltration in non-necrotic fiber	1 (0.5)	0	0	0	0	0	0	1 (1.2)
CD68/ACP infiltration in non-necrotic fiber	7 (3.3)	2 (3.1)	1 (5.0)	1 (5.3)	0	1 (9.1)	0	2 (2.4)
CD20 aggregation	10 (4.7)	4 (6.2)	1 (5.0)	1 (5.3)	0	0	0	4 (4.7)

Categorical data is reported as number and (percentage).

Abbreviations: ARS, anti-tRNA synthetase; ACP, acid phosphatase; CD, cluster of differentiation; NOS, not otherwise specified

\* $p < 0.05$  compared to the other antibody subtypes

**Supplementary eTable 5 HLA-DR expression patterns in ASS**

	Anti-ARS antibody							
	All ARS (n = 212)	Jo-1 (n = 65)	OJ (n = 20)	PL-7 (n = 20)	PL-12 (n = 11)	EJ (n = 10)	KS (n = 1)	ARS_NOS (n = 85)
HLA-DR expression	128 (60.4)	44 (67.7)	13 (65.0)	10 (50.0)	5 (45.5)	5 (50.0)	1 (100.0)	50 (58.8)
Pattern 1	19 (9.0)	1 (1.5)*	2 (10.0)	1 (5.0)	3 (27.3)*	2 (20.0)	0	10 (11.8)
Pattern 1+	3 (1.4)	1 (1.5)	1 (5.0)	0	0	0	0	1 (1.2)
Pattern 2	13 (6.1)	1 (1.5)*	3 (15.0)	2 (10.0)	0	0	0	7 (8.2)
Pattern 3	14 (6.6)	2 (3.1)	1 (5.0)	4 (20.0)*	0	0	1 (100.0)	6 (7.1)
Pattern 4	60 (28.3)	30 (46.2)*	4 (20.0)	3 (15.0)	2 (18.2)	2 (10.0)	0	19 (22.4)
Pattern 5	19 (9.0)	9 (13.8)	2 (10.0)	0	0	1 (10.0)	0	7 (8.2)
“Possible” perifascicular pattern (3+4+5)	93 (43.9)	41 (63.1)*	7 (35.0)	7 (35.0)	2 (18.2)	3 (30.0)	1 (100.0)	32 (37.6)
Perifascicular pattern (4+5)	79 (37.3)	39 (60.0)*	6 (30.0)	3 (15.0)*	2 (18.2)	3 (30.0)	0	26 (30.6)

Categorical data is reported as number and (percentage).

Abbreviations: ARS, anti-tRNA synthetase; HLA, human leukocyte antigen; NOS, not otherwise specified

\*p < 0.05 compared to the other antibody subtypes

**Supplementary eTable6 Myopathology patterns and HLA-DR expression pattern 4 and 5**

	Anti-ARS antibody							
	All ARS (n = 210) <sup>a</sup>	Jo-1 (n = 65)	OJ (n = 20)	PL-7 (n = 20)	PL-12 (n = 11)	EJ (n = 10)	KS (n = 1)	ARS_NOS (n = 83) <sup>a</sup>
<b>Pattern 4</b>								
Normal/non-specific	6 (2.9)	3(4.6)	0	0	0	0	0	3 (3.6)
Necrotizing myopathy without PFN	29 (13.8)	14 (21.5)	2 (10.0)	1 (5.3)	2 (18.2)	0	0	10 (12.0)
Necrotizing myopathy with PFN	24 (11.4)	12 (18.5)	2 (10.0)	2 (10.5)	0	2 (18.2)	0	6 (7.2)
Others	1 (0.5)	1 (1.5) <sup>b</sup>	0	0	0	0	0	0
<b>Pattern 5</b>								
Normal/non-specific	1 (0.5)	0	0	0	0	1 (9.1)	0	0
Necrotizing myopathy without PFN	7 (3.3)	2 (3.1)	1 (5.0)	0	0	0	0	4 (4.8)
Necrotizing myopathy with PFN	11 (5.2)	7 (10.8)	1 (5.0)	0	0	0	0	3 (3.6)
Others	0	0	0	0	0	0	0	0

Categorical data is reported as number and (percentage). \* $p < 0.05$  compared to the other antibody subtypes

Abbreviations: ARS, anti-tRNA synthetase; NOS, not otherwise specified; PFN, perifascicular necrosis

<sup>a</sup>Two cases of ARS, nos were excluded from the analysis due to artifacts

<sup>b</sup>Neurogenic muscle biopsy

**Supplementary eTable 7 HLA-DR expression patterns in non-ASS AIM and P-MM**

	Non-ASS AIM (n = 602)			P-MM (n = 140)					
	DM (n = 188)	IMNM (n = 313)	IBM (n = 101)	DYSF (n = 50)	SGP (n = 15)	LMNA (n = 16)	ANO5 (n = 3)	FKRP (n = 9)	FSHD (n = 47)
HLA-DR expression	28 (14.9)*	20 (6.4)*	99 (98.0)*	0	0	0	0	0	1 (2.1)*
Pattern 1	3 (1.6)	11 (3.5)	30 (29.7)	0	0	0	0	0	1 (2.1)
Pattern 1+	0	0	65 (64.4)	0	0	0	0	0	0
Pattern 2	4 (2.1)	3 (1.0)	1 (1.0)	0	0	0	0	0	0
Pattern 3	7 (3.7)	2 (0.6)	0	0	0	0	0	0	0
Pattern 4	10 (5.3)	4 (1.3)	0	0	0	0	0	0	0
Pattern 5	4 (2.1)	0	3 (3.0)	0	0	0	0	0	0
“Possible” perifascicular pattern (3+4+5)	21 (11.2)	6 (1.9)	3 (3.0)	0	0	0	0	0	0
Perifascicular pattern (4+5)	14 (7.4)	4(1.3)	3 (3.0)	0	0	0	0	0	0

Categorical data is reported as number and (percentage).

**Abbreviations:** AIM, autoimmune myositis; ASS, antisynthetase syndrome; P-MM, possible myositis mimics; DM, dermatomyositis; IMNM, immune mediated necrotizing myopathy; IBM, inclusion body myositis; DYSF, dysferlinopathy; SGP, sarcoglycanopathy; LMNA, laminopathy; ANO5, anoctamin5 myopathy; FKRP, fukutin-related protein myopathy; FSHD, facioscapulohumeral disease

\* $p < 0.05$  compared to ASS

**Supplementary eTable 8 Sensitivity, specificity, positive- and negative predictive value of HLA-DR expression in ASS**

	<b>ASS (n=212)</b>	<b>Non-ASS<sup>a</sup> (n=742)</b>	<b>Sensitivity</b>	<b>Specificity</b>	<b>PPV</b>	<b>NPV</b>
HLA-DR expression	128 (60.4)	148 (19.9)	60.4%	80.1%	46.4%	87.6%
Considering ASS vs other entities excluding MxA-positive muscle biopsies and muscle biopsies from patient clinico-pathologically compatible with IBM						
	<b>ASS<sup>b</sup> (n=209)</b>	<b>Non-ASS<sup>c</sup> (n=453)</b>	<b>Sensitivity</b>	<b>Specificity</b>	<b>PPV</b>	<b>NPV</b>
HLA-DR expression	128 (61.2)	21 (4.6)	61.2%	95.4%	85.9%	84.2%
HLA-DR 3+4+5	93 (44.5)	6 (1.3)	44.5%	98.7%	93.9%	79.4%
HLA-DR 4+5	79 (37.8)	4 (0.9)	37.8%	99.1%	95.2%	77.5%
Considering anti-Jo-1 ASS vs other entities excluding MxA-positive muscle biopsies and muscle biopsies from patient clinico-pathologically compatible with IBM						
	<b>Jo-1 ASS (n=64)<sup>d</sup></b>	<b>Non-Jo-1<sup>c,e</sup> (n=513)</b>	<b>Sensitivity</b>	<b>Specificity</b>	<b>PPV</b>	<b>NPV</b>
HLA-DR 3+4+5	41 (54.1)	26 (5.1)	64.1%	94.9%	61.2%	95.5%
HLA-DR 4+5	39 (60.9)	18 (3.5)	60.9%	96.5%	68.4%	95.2%

<sup>a</sup>Non-ASS include DM=188, IMNM=313, IBM=101, P-MM=140

<sup>b</sup>Exclude 3 MxA-positive ASS: anti-Jo-1 = 1; anti-OJ = 1; anti-PL-7=1

<sup>c</sup>Exclude DM=188 and IBM=101

<sup>d</sup>Exclude 1 MxA-positive anti-Jo-1 ASS

<sup>e</sup>Exclude 2 MxA-positive ASS: anti-OJ = 1 and anti-PL-7=1

Abbreviation: HLA, human leukocyte antigen; ASS, antisynthetase syndrome; PPV, positive predictive value; NPV, negative predictive value; MxA, Myxovirus resistant protein A; DM, dermatomyositis; IMNM, immune mediated necrotizing myopathy; IBM, inclusion body myositis



**Supplementary eTable 9 Expression levels of the 10 most significantly expressed genes of the IFN-signaling pathway and *CIITA* in different subtypes of inflammatory myopathy**

<b>Jo-1</b>			<b>OJ</b>			<b>IBM</b>			<b>HMGCR</b>			<b>SRP</b>		
<b>Gene</b>	<b>L2FC</b>	<b>padj</b>	<b>Gene</b>	<b>L2FC</b>	<b>padj</b>	<b>Gene</b>	<b>L2FC</b>	<b>padj</b>	<b>Gene</b>	<b>L2FC</b>	<b>padj</b>	<b>Gene</b>	<b>L2FC</b>	<b>padj</b>
<i>PSMB8</i>	3.75	2.62E-51	<i>PSMB8</i>	3.22	1.89E-38	<i>PSMB8</i>	3.44	4.79E-36	<i>IFI30</i>	3.89	7.25E-16	<i>IFI30</i>	3.83	1.59E-15
<i>B2M</i>	2.76	1.04E-35	<i>IFI30</i>	5.45	1.32E-35	<i>B2M</i>	2.56	6.97E-26	<i>FCGR1A</i>	4.65	3.36E-11	<i>TRIM14</i>	2.59	8.26E-12
<i>IRF9</i>	2.68	2.04E-29	<i>B2M</i>	2.47	1.73E-29	<i>HLA-A</i>	2.63	2.16E-22	<i>NCAM1</i>	3.48	2.63E-10	<i>PSMB8</i>	1.76	2.38E-10
<i>IRF1</i>	3.51	7.17E-28	<i>TRIM14</i>	3.71	3.04E-27	<i>GBP6</i>	7.49	7.03E-22	<i>IRF5</i>	2.28	4.57E-10	<i>IRF9</i>	1.64	3.56E-10
<i>HLA-A</i>	2.61	2.39E-26	<i>ICAM1</i>	3.24	2.14E-25	<i>HLA-F</i>	2.88	4.48E-21	<i>TRIM14</i>	2.36	7.70E-10	<i>IRF5</i>	2.22	1.20E-09
<i>ICAM1</i>	3.35	2.94E-26	<i>FCGR1A</i>	6.54	5.99E-25	<i>HLA-B</i>	3.11	9.45E-21	<i>OAS1</i>	2.49	1.37E-09	<i>OAS1</i>	2.47	1.74E-09
<i>GBP1</i>	4.19	5.63E-26	<i>IFI6</i>	3.89	1.89E-21	<i>HLA-E</i>	1.84	5.18E-19	<i>IRF8</i>	2.79	4.69E-09	<i>IRF7</i>	1.96	3.22E-09
<i>HLA-F</i>	2.92	9.82E-26	<i>SAMHD1</i>	2.06	5.92E-21	<i>HLA-DRA</i>	3.68	1.55E-18	<i>TRIM38</i>	1.61	5.68E-09	<i>IRF8</i>	2.79	4.67E-09
<i>IFI30</i>	4.67	1.08E-25	<i>HLA-A</i>	2.25	1.75E-20	<i>HLA-DPA1</i>	3.38	1.64E-18	<i>OASL</i>	2.98	6.43E-09	<i>OAS2</i>	2.28	1.11E-08
<i>HLA-B</i>	2.87	4.27E-21	<i>VCAM1</i>	3.56	2.00E-20	<i>HLA-DPB1</i>	3.57	2.40E-18	<i>HLA-DPA1</i>	2.19	1.46E-08	<i>VCAM1</i>	2.42	1.91E-08
<i>CIITA</i>	2.43	6.53E-13	<i>CIITA</i>	1.80	5.71E-08	<i>CIITA</i>	2.58	2.10E-12	<i>CIITA</i>	1.29	7.40x10 <sup>-4</sup>	<i>CIITA</i>	1.04	6.75x10 <sup>-3</sup>
<b>TIF1-g</b>			<b>Mi-2</b>			<b>MDA5</b>			<b>NXP-2</b>					
<b>Gene</b>	<b>L2FC</b>	<b>padj</b>	<b>Gene</b>	<b>L2FC</b>	<b>padj</b>	<b>Gene</b>	<b>L2FC</b>	<b>padj</b>	<b>Gene</b>	<b>L2FC</b>	<b>padj</b>	<b>Gene</b>	<b>L2FC</b>	<b>padj</b>
<i>ISG15</i>	8.20	9.96E-63	<i>IFI6</i>	6.48	9.84E-54	<i>ISG15</i>	7.68	5.38E-66	<i>ISG15</i>	8.04	8.69E-93	<i>IFI6</i>	6.74	4.24E-84
<i>IFI6</i>	7.13	2.93E-61	<i>OAS1</i>	5.51	4.26E-48	<i>IFI6</i>	6.70	8.76E-65	<i>IFI6</i>	6.74	4.24E-84	<i>IFIT3</i>	7.04	7.98E-81
<i>IRF9</i>	3.95	6.87E-57	<i>IFITM1</i>	3.68	2.38E-46	<i>IRF9</i>	3.85	8.76E-65	<i>IFIT3</i>	7.04	7.98E-81	<i>OAS1</i>	5.90	1.20E-79
<i>IFIT3</i>	7.15	3.16E-54	<i>ISG15</i>	6.81	2.47E-46	<i>IFIT3</i>	6.85	1.28E-59	<i>OAS1</i>	5.90	1.20E-79	<i>IFITM1</i>	4.00	1.81E-79
<i>OAS1</i>	5.97	2.83E-53	<i>MX2</i>	4.60	1.08E-44	<i>OAS1</i>	5.55	5.88E-55	<i>IFITM1</i>	4.00	1.81E-79	<i>IRF9</i>	3.65	6.74E-75
<i>RSAD2</i>	5.93	1.45E-48	<i>OAS3</i>	4.89	2.36E-43	<i>RSAD2</i>	5.62	5.70E-52	<i>IRF9</i>	3.65	6.74E-75	<i>OAS3</i>	5.15	2.05E-69
<i>IFITM1</i>	3.78	3.35E-46	<i>IFI27</i>	4.27	2.08E-42	<i>IFIT5</i>	3.42	4.61E-50	<i>OAS3</i>	5.15	2.05E-69	<i>RSAD2</i>	5.67	3.57E-68
<i>OAS3</i>	5.20	4.08E-46	<i>OAS2</i>	4.91	1.10E-40	<i>OASL</i>	6.57	9.90E-50	<i>RSAD2</i>	5.67	3.57E-68	<i>IFIT5</i>	3.52	6.05E-68
<i>IFIT5</i>	3.55	3.55E-45	<i>IFI30</i>	5.93	2.77E-39	<i>OAS3</i>	4.85	5.79E-48	<i>IFIT5</i>	3.52	6.05E-68	<i>PSMB8</i>	3.69	8.89E-68
<i>PSMB8</i>	3.71	7.04E-45	<i>IFITM3</i>	3.31	4.15E-39	<i>IFITM1</i>	3.51	1.65E-47	<i>PSMB8</i>	3.69	8.89E-68	<i>CIITA</i>	1.02	7.67x10 <sup>-4</sup>
<i>CIITA</i>	0.96	1.72x10 <sup>-2</sup>	<i>CIITA</i>	1.07	2.93x10 <sup>-3</sup>	<i>CIITA</i>	0.35	0.44	<i>CIITA</i>	1.02	7.67x10 <sup>-4</sup>			

Supplementary eTable 10 Pathology domains in antisynthetase syndrome of the original cohort

	Anti-ARS antibody						
	All ARS (n = 50)	Jo-1 (n = 15)	OJ (n = 13)	PL-7 (n = 12)	PL-12 (n = 4)	EJ (n = 5)	KS (n = 1)
<b>Muscle fiber domain</b>							
score	3.3±2.2	2.2±1.3*	5.2±2.0*	3.3±2.5	1.3±0.5*	3.6±2.4	4.0
<b>Inflammatory domain</b>							
score	4.5±2.9	3.9±2.9	7.2±3.0*	3.9±1.8	2.8±1.0*	2.8±2.4	2.0
<b>Vascular domain</b>							
Capillary: muscle fiber ratio	0.8±0.3 <sup>a</sup>	0.9±0.5	0.9±0.2 <sup>b</sup>	0.8±0.4 <sup>b</sup>	0.7 ±0.1	0.7 ±0.2	0.8
<b>Connective tissue domain</b>							
PM-Fr	27 (54.0)	6 (40)	9 (69.2)	7 (58.3)	3 (75.0)	2 (40.0)	0
PM-ALP	29 (58.0)	6 (40)	10 (76.9)	8 (66.7)	0*	4 (80.0)	1 (100.0)
Endomysial fibrosis	3 (6.0)	0	1 (7.7)	1 (8.3)	0	1 (20.0)	0

Continuous data is shown as mean and ± standard deviation while categorical data is reported as number and (percentage).

Abbreviations: ARS, anti-tRNA synthetase; PM-Fr, perimysial connective tissue fragmentation; PM-ALP, increased perimysial alkaline phosphatase activity

<sup>a</sup>Two cases were excluded from analysis due to artifacts

<sup>b</sup>One case was excluded from analysis due to artifacts

**Supplementary eTable 11 Immunohistochemical feature in antisynthetase syndrome of the original cohort**

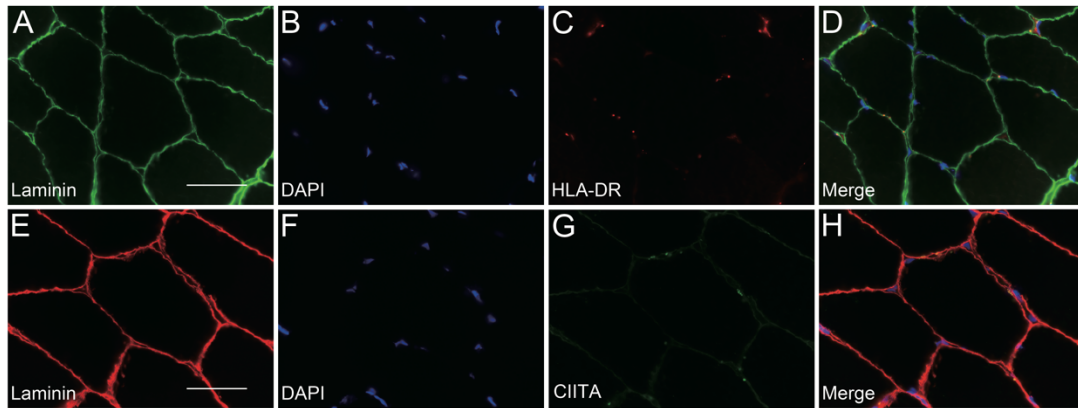
	Anti-ARS antibody						
	All ARS (n = 50)	Jo-1 (n = 15)	OJ (n = 13)	PL-7 (n = 12)	PL-12 (n = 4)	EJ (n = 5)	KS (n = 1)
HLA-ABC expression	49 (98.0)	14 (93.3)	13 (100.0)	12 (100.0)	4 (100.0)	5 (100.0)	1 (100.0)
HLA-ABC expression with PF enhancement	2 (4.0)	2 (13.3)	0	0	0	0	0
HLA-DR expression	27 (54.0)	9 (60.0)	8 (61.5)	4 (33.3)	2 (50.0)	3 (60.0)	1 (100.0)
HLA-DR expression with perifascicular pattern (4+5)	16 (32.0)	8 (53.3)*	4 (30.8)	0*	2 (50.0)	2 (40.0)	0
MAC capillary deposition	28 (56.0)	12 (80.0)*	7 (53.8)	5 (41.7)	2 (50.0)	2 (40.0)	0
MAC capillary deposition in PF area	2 (4.0)	1 (6.7)*	1 (7.7)*	0*	0*	0*	0
MAC sarcolemmal deposition	19 (38.0)	4 (26.7)	7 (53.8)	5 (41.7)	0	3 (60)	0
MAC sarcolemmal deposition in PF area	14 (28.0)	2 (13.3)	6 (46.2)	4 (33.3)	0	2 (40.0)	0
MxA expression	1 (2.0)	0	0	1 (8.3)	0	0	0

Continuous data is shown as mean and  $\pm$  standard deviation while categorial data is reported as number and (percentage).

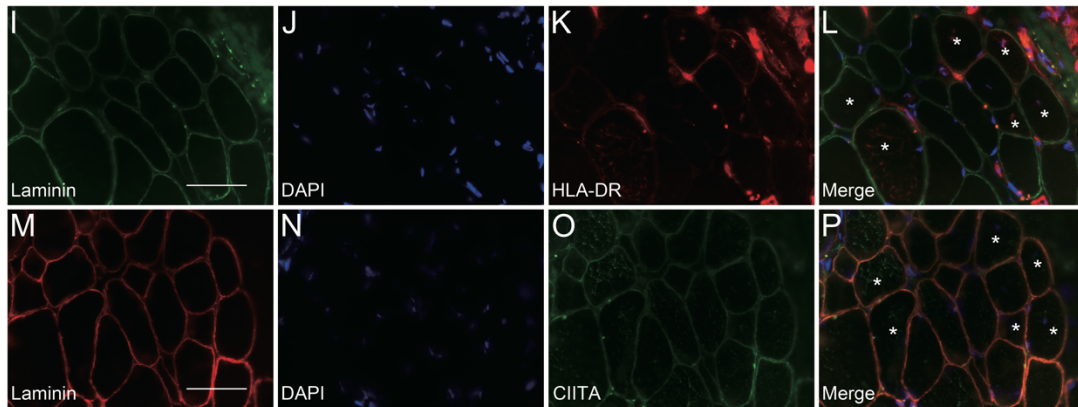
Abbreviations: ARS, anti-tRNA synthetase; HLA, human leukocyte antigen; PF, perifascicular area; MAC, membrane attack complex; MxA, myxovirus resistant protein A

\*p < 0.05 compared to the other antibody subtype

### Normal



### Anti-Jo1 ASS



### Supplementary efigure 1 CIITA and HLA-DR expression

Normal muscle biopsy (**A-H**): Staining for HLA-DR and CIITA are negative in normal muscle biopsy. Serialized section of anti-Jo-1 ASS (**I-P**): Some fibers show HLA-DR and CIITA expression; co-expression is focally observed (white asterisk, **L** and **P**).

**Note:** A-P bar = 50 $\mu$ m; A, E, I, M: laminin; B, F, J, N: DAPI; C, K: HLA-DR (human leukocyte antigen-DR, major histocompatibility complex class II); G, O: CIITA (major histocompatibility complex class II activator); D,H,L,P: merge.