

Excess all-cause mortality across counties in the United States, March 2020 to December 2021

Eugenio Paglino¹, Dielle J. Lundberg², Ahyoung Cho³, Joe A. Wasserman⁴, Rafeya Raquib², Irma T. Elo¹, Katherine Hempstead⁴, Samuel H. Preston¹, Andrew C. Stokes²

¹Department of Sociology and Population Studies Center, University of Pennsylvania, Philadelphia, PA

²Department of Global Health, Boston University School of Public Health, Boston, MA

³Department of Political Science, Boston University, Boston, MA

⁴RTI International, Research Triangle Park, NC

⁴Robert Wood Johnson Foundation, Princeton, NJ

ABSTRACT

Official Covid-19 death tallies have under-estimated the total mortality impact of the Covid-19 pandemic. Excess mortality is a useful measure for assessing the total effects of the pandemic on mortality levels. While most studies of excess mortality in the United States have taken place at the state or national levels, some studies have produced county-level estimates. However, no estimates are currently available for the period from 2020 to 2021. In the present study, we estimate two hierarchical linear models to predict county-level death rates using mortality data by county of residence from January 2015 to December 2019. After fitting the models, we generate estimates of expected deaths for each month in the period from March 2020 to December 2021 and compare these estimates with the observed number of deaths to obtain counts of excess deaths. An estimated 936,911 excess deaths occurred during 2020 and 2021, of which 171,168 were not assigned to Covid-19 on death certificates. In the Far West, Great Lakes, Mideast, and New England, there was a substantial urban mortality disadvantage in 2020, which was reversed in 2021 to yield a rural mortality disadvantage. In the Southeast, Southwest, Rocky Mountain, and Plains regions, there was a rural mortality disadvantage in 2020, which was exacerbated in 2021. The proportion of excess deaths assigned to Covid-19 was lower in 2020 (76.3%) than in 2021 (87.0%), suggesting fewer Covid-19 deaths went unassigned later in the pandemic. However, in rural areas and in the Southeast and Southwest many excess deaths were still not assigned to Covid-19 during 2021.

KEYWORDS: Covid-19, Excess mortality, Geographic inequalities, Rural health, Counties

CORRESPONDING AUTHOR: Andrew C. Stokes, 801 Massachusetts Avenue, Crosstown Building 362, Boston, MA, 02118, 617-358-2444, acstokes@bu.edu

SIGNIFICANCE

Deaths during the Covid-19 pandemic have been primarily monitored through death certificates containing reference to Covid-19. This approach has missed more than 180,000 deaths related to the pandemic between 2020 and 2021. While the ascertainment of Covid-19 deaths improved in some regions during 2021, the full effects of the pandemic still remained obscured in other regions. County-level estimates of excess mortality are useful for studying geographic inequities in the mortality burden associated with the pandemic and identifying specific regions where the full mortality burden was significantly underreported (i.e. Southeast and Southwest). They can also be used to inform resource allocation decisions at the federal and state levels (i.e. FEMA funeral assistance) and encourage uptake of preventive measures in communities with low vaccine uptake.

Introduction

The Covid-19 pandemic has had a substantial impact on mortality in the United States, leading to declines in life expectancy not previously observed since the end of World War II (1, 2).

Estimates of excess mortality, which compare observed deaths to those expected in the absence of the pandemic, suggest that the true death toll of the pandemic is much larger than indicated by the official Covid-19 death tallies (3–7). For example, one study estimated that 550,000 excess deaths occurred between March 2020 and February 2021 and that approximately one quarter of these excess deaths were assigned to causes other than Covid-19 (8).

Factors contributing to these assignments may have included an absence of widespread testing for Covid-19 in some areas and a lack of familiarity with the clinical manifestations of Covid-19, especially early in the pandemic (9). Additionally, persons with a comorbid condition, such as cardiovascular disease, diabetes, hypertension, and pulmonary disease, may have had their cause of death assigned to a cause related to the comorbid condition rather than Covid-19 (10). Unattended Covid-19 deaths occurring in the community may have been especially likely to be assigned to another cause of death (11). Individuals who develop cardiovascular disease or diabetes as a result of the post-acute sequelae of Covid-19 and subsequently die may also not have their deaths assigned to Covid-19 (12, 13). Second, excess deaths not assigned to Covid-19 may reflect deaths indirectly related to the pandemic, including reductions in access to health care during peak Covid-19 activity, increases in poisoning deaths, and economic hardship leading to housing and food insecurity (14–20).

There are multiple benefits to using excess mortality rather than assigned Covid-19 deaths to assess the mortality impact of the Covid-19 pandemic. First, examining excess mortality is more comparable spatially as opposed to Covid-19 mortality since states use different definitions to

assign Covid-19 deaths and local death investigation systems may have different policies and resources that affect assignment of Covid-19 deaths. Second, as rapid at-home testing becomes increasingly popular and public PCR testing centers are closed, many Covid-19 deaths will go unassigned to Covid-19 (21). In this way, continued tracking of excess mortality across time and space is vital to clarifying the total impact of the pandemic and to identifying the most appropriate policy responses and interventions.

Prior studies of excess mortality have primarily focused on national and state-level trends, but revealing the true mortality impact of the Covid-19 pandemic at the county-level is especially valuable for several reasons. First, because counties are the administrative unit for death investigation, excess mortality estimates have the potential to help identify counties with substantial Covid-19 under-counts that would benefit from additional training in cause-of-death certification (22). Such estimates may also be valuable for informing local public health workers, community leaders, and residents of the true impact of the pandemic, thus potentially increasing vaccination and uptake of other protective measures. These estimates may also be used to target federal and state emergency resources, such as funeral assistance support from the Federal Emergency Management Agency (FEMA). Finally, estimating excess mortality at the county-level also enables analyses of the factors affecting mortality associated with the pandemic, including its urban/rural dimensions.

One prior study generated predictions of excess mortality at the county level but was limited to data from 2020 and pooled small counties together to increase precision (4). In the present study, we developed a set of two hierarchical models to estimate excess mortality for 3,127 harmonized counties¹ for the period from March 2020 to December 2021. We also evaluated the

¹ To reconcile difference in FIPS code across all of our data sources we tracked county FIPS codes back to their 1990 values reversing the changes operated by the Census Bureau over time as detailed here: <https://www.census.gov/programs-surveys/geography/technical-documentation/county-changes.2020.html>

extent to which excess deaths are accounted for in official Covid-19 death tallies as an indicator of potential under-reporting of Covid-19 mortality. In addition to generating county-level estimates, we produced summary estimates to examine differences by US region and across the urban-rural continuum.

Results

Across the United States, 459,764 excess deaths occurred between March and December 2020, and 477,147 excess deaths occurred in 2021. This equals 936,911 excess deaths during calendar years 2020 and 2021, of which 765,743 were assigned to Covid-19. In 2020, excess death rates were highest in nonmetro areas (207 deaths per 100,000 residents) followed by large central metro areas (173 deaths per 100,000 residents), whereas in 2021, excess death rates were highest in nonmetro areas (227 deaths per 100,000 residents) followed by small or medium metros (163 deaths per 100,000 residents). Regionally, the excess death rate in 2020 was highest in the Mideast (206 deaths per 100,000 residents) followed by the Southwest (188 deaths per 100,000 residents). In 2021, however, the excess death rate was highest in the Southeast (205 deaths per 100,000 residents) and the Southwest (198 deaths per 100,000 residents). The areas with the highest excess death rates in 2020 were large central metros in the Mideast and nonmetro areas in the Southwest and Southeast. In 2021, the areas with the highest excess death rates were nonmetro areas in the Southwest, nonmetro areas in the Southeast, and small or medium metros in the Southwest and Southeast (**Table 1**). **Supplemental Table S1** provides estimates of Covid-19 and excess mortality rates for each state in 2020 and 2021. Excess death rates were highest in Mississippi (301 deaths per 100,000 residents) followed by Arizona (246 deaths per

100,000 residents) in 2020 and in West Virginia (298 deaths per 100,000 residents) followed by Mississippi (271 deaths per 100,000 residents) in 2021.

Figure 1 shows excess death rates across all counties in the United States. Between 2020 and 2021, excess deaths shifted to the south and to the west and from metro to nonmetro areas. In 2020, excess mortality was higher in metro counties in the Far West, Great Lakes, Mideast, and New England (**Table 1**). In 2021, however, excess mortality was higher in nonmetro areas than metro areas in these regions. In the Southeast, Southwest, Rocky Mountain, and Plains regions, excess mortality was higher in nonmetro areas in both 2020 and 2021; however, the disparity between nonmetro and metro areas was greater in 2021.

Supplemental Figure S1 shows actual and expected death rates for the U.S. by month during 2020 and 2021. Three peaks in mortality are apparent: (1) early 2020, (2) end of 2020 / start of 2021, and (3) end of 2021. **Figure 2** breaks down trends in excess death rates within each BEA region by month throughout the period. Excess death rates peaked in the Mideast in early 2020, primarily in large metro areas. Excess death rates also increased markedly in New England and the Great Lakes during this time. Around the end of 2020, a second peak resulted in high excess death rates in the Far West, Great Lakes, Southwest, and Southeast regions. A third peak was observed in most of the regions near the end of 2021. **Supplemental Figure S2** shows actual and expected death rates for the largest county in each BEA region - metro combination by month during 2020 and 2021. Some counties only experienced one peak in mortality (e.g. Kings County, New York), whereas others experienced three distinct peaks (e.g. Navajo County, Arizona).

In absolute terms, the Southeast was the region with the most excess deaths in both 2020 and 2021 followed by the Mideast and Great Lakes in 2020 and by the Southwest in 2021 (**Figure 3**).

While New York was the state with the most excess deaths in 2020, Texas, California, and Florida had the most excess deaths in 2021. Excess mortality was also less concentrated in large metro areas and large fringe areas in 2021 than it was in 2020.

Figure 4 plots the proportion of excess deaths assigned to Covid-19 across counties in the United States. In both 2020 and 2021, counties across the country reported substantial numbers of excess deaths not assigned to Covid-19. In total, 76.3% of excess deaths were assigned to Covid-19 in 2020, whereas in 2021, 87.0% of excess deaths were assigned to Covid-19. This equals 109,069 excess deaths that were not assigned to Covid-19 in 2020 and 62,099 excess deaths that were not assigned to Covid-19 in 2021, for a total of 171,168 deaths. Despite the increase in assignment of Covid-19 deaths from 2020 to 2021, many regions still had areas with a low proportion of excess deaths assigned to Covid-19 during 2021, such as nonmetro areas in the Far West (69.5%) and Southeast (71.4%). The Southeast and Southwest were the regions with the lowest overall assignment of excess deaths to Covid-19 in 2021.

In 2020, assignment of excess deaths to Covid-19 was lower overall in urban areas compared to rural areas, whereas in 2021, assignment was lower in rural areas than urban areas. Despite this overall trend, several regions (Far West, Mideast and New England) had lower assignment in rural areas in 2020 than in urban areas. This suggests that assignment of excess deaths to Covid-19 in rural areas was low across the study period. In 2021, assignment of excess deaths to Covid-19 was particularly low in nonmetro areas in the Southeast.

Supplemental Figure S3 plots excess death rates for each county against their Covid-19 death rates. Counties above the 45 degree reference line represent areas where the excess death rate was higher than the Covid-19 death rate, indicating there were excess deaths not assigned to Covid-19 in these counties. In 2020, the majority of counties in all regions except New England

were above the 45 degree line, demonstrating that there were excess deaths not assigned to Covid-19 in these areas. Excess deaths not assigned to Covid-19 occurred in counties across the urban-rural continuum. In 2021, the majority of counties in the Southeast, Southwest, Far West, and Rocky Mountains regions remained above the 45 degree line, demonstrating that they still had unassigned excess deaths. In particular, the counties with the highest proportion of excess deaths not assigned to Covid-19 tended to be nonmetro counties. Most counties in the Mideast, Plains, and Great Lakes, however, no longer had unassigned excess deaths in 2021.

Figure 5 examines the relationship between counties' social vulnerability index (SVI) and their Covid-19 death rates and excess death rates during 2020 and 2021. SVI was positively related to both Covid-19 death rates and excess death rates in both 2020 and 2021. For both outcomes, the relationship strengthened in 2021 compared to 2020. The association between SVI and excess mortality in 2020 (14.7 deaths per 100,000 person-years per decile SVI change) and 2021 (18.7 deaths per 100,000 person-years per decile SVI change) was stronger than the association between SVI and Covid-19 mortality in 2020 (5.8 deaths per 100,000 person-years per decile SVI change) and 2021 (11.0 deaths per 100,000 person-years per decile SVI change), suggesting that excess mortality more fully captured inequities in mortality during the pandemic.

Discussion

In the present study, we produced estimates of excess deaths associated with the Covid-19 pandemic from March 2020 to December 2021 across 3,127 harmonized counties in the United States. Our study found that nearly 940,000 excess deaths occurred in the U.S. between 2020 and 2021, of which more than 170,000 were not assigned to Covid-19 on death certificates. This indicates that excess deaths were 22% higher than Covid-19 deaths during this period.

Prior studies of excess mortality have largely produced estimates for the year 2020, (3–6, 23) leaving patterns of excess mortality during 2021 under-studied. The Center for Disease Control and Prevention (CDC) however has reported a provisional estimate of approximately 944,000 excess deaths in the U.S. from March 2020 to December 2021, which is very close to our estimate (24). Woolf et al. identified 522,368 excess deaths from March 1, 2020 to January 2, 2021, which is higher than our estimate of approximately 470,000 deaths for the year 2020 (6). Islam et al. reported 458,000 excess deaths during 2020, which is close to our estimate (25). A prior estimate by Stokes et al. found 438,386 excess deaths in 2020, which is lower than our estimate due to differences in methods and time horizons for predicting expected deaths (4).

There are multiple potential advantages to using county-level data to generate estimates of excess mortality at the state and national levels. Predicting expected mortality at the state or national levels assumes that all areas within the state or nation have the same background trends of mortality. However, in actuality, different regions of the U.S. have experienced varied long-term mortality trends (8). Our approach may produce more reliable estimates of expected mortality in the absence of the pandemic, because the projections build on historical trends at the county-level.

Another key advantage of producing excess mortality estimates at the county-level is the opportunity to examine differences across the urban-rural continuum, which is not possible with state-level data. By exploring how excess mortality varies by region and time across the urban-rural continuum, we formed several novel insights about patterns of mortality and the assignment of Covid-19 as a cause of death on death certificates during the pandemic.

One major finding of this study is that there was substantial variation in excess mortality by US region and across the urban-rural continuum, which differed between 2020 and 2021. In the

Far West, Great Lakes, Mideast, and New England, there was a substantial urban mortality disadvantage in 2020, which was reversed in 2021 to yield a rural mortality disadvantage. In the Southeast, Southwest, Rocky Mountain, and Plains regions, there was a rural mortality disadvantage in 2020, which was exacerbated in 2021. This suggests that the pandemic has impacted rural areas heavily, especially in 2021, suggesting a need for increased preventative measures (i.e. vaccination) in these areas.

Another finding of this study is that excess death rates exceeded Covid-19 death rates across most counties in all BEA regions during 2020 except New England. This indicates that there were excess deaths not assigned to Covid-19 reported in these regions during 2020. Between 2020 and 2021, Covid-19 and excess mortality then converged in some regions of the country (e.g. Mideast and Great Lakes), whereas in other regions (e.g. Southeast and Southwest), excess death rates continued to exceed Covid-19 death rates in most counties, indicating that excess deaths not assigned to Covid-19 persisted. This finding may have several explanations. In the Mideast, the gap between Covid-19 and excess mortality in 2020 likely reflected the fact that the pandemic affected this region early in the pandemic when access to testing was extremely limited and the clinical manifestations of Covid-19 were unclear (23). The elimination of this gap by 2021 suggests that as the pandemic progressed, the Mideast was able to more effectively and fully capture Covid-19 deaths. In other regions such as the Southeast and Southwest, the gaps between Covid-19 and excess mortality persisted into 2021, which may relate to the continued lack of Covid-19 testing in many Southeastern and Southwestern counties even as the pandemic progressed (26–28).

Excess deaths exceeded Covid-19 deaths in rural areas across many regions, especially in 2021. Many counties in the Southeast and Southwest regions also had low levels of assignment

of excess deaths to Covid-19 throughout the pandemic. Rural counties may have under-counted Covid-19 deaths throughout the pandemic as a result of the exceptionally high death rates many rural areas faced during the Winter surge of 2020-2021 and the subsequent Delta surge in Summer/Fall 2021 (29–33). Other contributing factors may have included under-resourced health care systems that were unable to care for patients with Covid-19 and/or other non-Covid-19 conditions, under-resourced death investigation systems in which medical examiners or coroners did not pursue post-mortem Covid-19 testing, and partisan beliefs regarding the Covid-19 pandemic that may have influenced the likelihood of testing (16, 22).

Although our study does not distinguish between uncounted Covid-19 deaths and deaths indirectly related to the pandemic, it is likely that uncounted Covid-19 deaths represent many of the unassigned excess deaths identified in this study (34). Discrepancies between Covid-19 death rates and excess death rates are problematic because they have the potential to mislead scientists and policymakers about which areas were most heavily affected during the pandemic. Failure to accurately capture Covid-19 deaths also points to an urgent need to modernize the death investigation system in the United States, including expanding budgets for medical examiner officers and eliminating the archaic coroner system (22).

In New England, we observed a different pattern around assignment of Covid-19 deaths than in the other BEA regions. In this region, a large share of counties had higher Covid-19 than excess death rates, a pattern that became more pronounced between 2020 and 2021. Several explanations may exist for this pattern including that other causes of death (i.e. influenza) declined in these areas, that these counties represented economically privileged areas where individuals were able to work-from-home and avoid household crowding during that pandemic, and/or that deaths were over-assigned to Covid-19 in these areas.

Another finding of this study was that the Social Vulnerability Index – a multi-modal measure developed by the CDC that incorporates socioeconomic status, household composition and disability, minority status and language, and housing type and transportation – was positively associated with both Covid-19 and excess death rates during 2020 and 2021; however, the degree of association was much greater for excess mortality, suggesting that excess mortality is a more sensitive measure for detecting inequities in mortality during the pandemic than Covid-19 death rates. This was especially true in 2020 when differences between Covid-19 and excess deaths were largest. This finding highlights the importance of using excess mortality as a tool to understand which communities were most heavily affected during the pandemic.

The study had several limitations. First, the study relied on publicly available data, which were subject to suppression of death counts fewer than 10 in a given county-month. We addressed this limitation using an imputation approach with annual data, however, our estimates remain uncertain in areas with small populations and few deaths. Second, some counties and states have experienced prolonged reporting delays of Covid-19 deaths, which could affect our estimates of the proportion of excess deaths assigned to Covid-19. Third, the estimates produced by this study identify more excess deaths than a prior analysis of county-level excess deaths during 2020 due to differences in methods and time horizons.(4, 35) We also found a lower percentage of excess deaths assigned to Covid-19 since we used underlying cause of death data rather than assessing whether Covid-19 appeared anywhere on the death certificate. Fourth, we were unable to distinguish between excess deaths from natural causes and excess deaths indirectly related to the pandemic. Future research should examine this distinction to clarify the extent to which unassigned excess deaths reported in this study represent under-reporting of Covid-19 deaths. Finally, our model does not account for differences in age structure between

counties. Since the pandemic has affected older populations more significantly, some differences in mortality observed between counties may simply reflect differences in their age distribution. Thus, an important direction for future analyses is to produce age-standardized county-level estimates using age-specific mortality data.

In conclusion, in the present study we generated Covid-19 and excess mortality rates for 3,127 harmonized county units over the period from March 2020 to December 2021. In contrast to official Covid-19 death tallies, which are subject to differential underreporting and fail to capture indirect pandemic effects, the present estimates more fully account for the true toll of the pandemic across local areas and provide a more comparable measure of the Covid-19 mortality burden. As such, the estimates from the current study can be used as input for additional work to investigate the determinants of excess mortality throughout the pandemic and may also be useful for communicating Covid-19 risks with local communities where the direct tallies have hidden the full extent of the pandemic's consequences.

Materials & Methods

Yearly and monthly death counts at the county level were extracted from CDC WONDER online tool. See **Methods Supplement** for further details about data extraction procedures. We extracted death counts by all causes of death and from COVID alone. Causes of death were selected from the Multiple Cause of Death database using the provisional counts for 2020 and 2021 and the final counts for 2015-2019. A death was assigned to COVID when COVID was listed as the underlying cause of death. For all years except 2020, yearly deaths include all deaths between January to December. For 2020, yearly deaths include only deaths that occurred

between March and December to better reflect the pandemic period. All death rates computed for 2020 were adjusted to account for the shorter exposure period.

To convert the number of deaths into rates, we used publicly available yearly county-level population estimates from the Census Bureau². To compute monthly rates, we assumed linear growth between each two time points. For the August-December period in 2021, for which no population estimates are available, we assumed the population remained constant at its value in July.

We grouped counties into 4 metropolitan-nonmetropolitan categories (large central metro, large fringe metro, medium or small metro, nonmetro) based on the 2013 NCHS Rural-Urban Classification Scheme for Counties³ and into 8 Bureau of Economic Analysis (BEA) regions (Far West, Great Lakes, Mideast, New England, Plains, Rocky Mountains, Southeast, Southwest) (36). Next, we stratified each region by each metropolitan- nonmetropolitan category, leading to 32 geographic units. We also grouped small counties into county-sets according to the United States Census Bureau's County Sets classification. County-sets were used, in addition to counties, within our model to improve the precision of estimates for small counties in the study. See **Methods Supplement** for further details about the geographic classifications used in this study.

To model the monthly county-level number of deaths for 100,000 residents (DR), we estimated two different hierarchical linear models. The first model predicts monthly DR for a county directly while the second one predicts yearly DR for a county and then distributes the corresponding number of deaths over the year by month according to weights computed over the

² Population data were obtained from the following sources for 2010-2020 and 2020-2021:

<https://www2.census.gov/programs-surveys/popest/datasets/2010-2020/counties/totals/co-est2020.csv>

<https://www2.census.gov/programs-surveys/popest/datasets/2020-2021/counties/totals/co-est2021-alldata.csv>

³ Further details regarding the 2013 NCHS Rural-Urban Classification Scheme are available here:

<https://www.ers.usda.gov/data-products/rural-urban-continuum-codes.aspx>

All-Causes of Death data at the national level. Both models were estimated using the lme4 package for the R language (37) and fitted using monthly mortality data for the period January 2015 - December 2019. The need for these two different models arises as a result of the suppression procedure applied in the CDC WONDER tool to all data points (county-months in our case) with fewer than 10 deaths. As a result of suppression, small counties that rarely exceed 10 deaths in a given month have very few data points, and these data points are not representative of normal mortality conditions (that is why they were not suppressed). In other words, data points are not missing at random and non-missing data points for small counties reflect higher-than-normal mortality. The yearly-level model, by making use of the additional information on the yearly number of deaths, leads to more accurate predictions in counties with a high proportion of missing data points. Combining these two models led to a better overall performance compared to using either one in isolation.

The monthly-level model expresses the monthly number of deaths for every 100,000 residents (DR) as a function of time (in years), month (with dummy variables), and an intercept allowed to vary across counties, county-sets, and states. To make the model more flexible, the time slope is also allowed to vary across county sets. Formally:

$$\begin{aligned}
 \text{Level 1: } DR_{c,cs,s,t} &= \pi_{0c} + \pi_{0cs} + \pi_{0s} + \pi_{1cs} Year_{c,t} \\
 &\quad + \sum_{m=1}^{12} \theta_m Month_{c,t} + \varepsilon_{c,cs,s,t} \\
 \text{Level 2: } \pi_{0c} &\sim \mathcal{N}(\gamma_{0C}, \sigma_{0C}^2) \\
 \text{Level 3: } \begin{bmatrix} \pi_{0cs} \\ \pi_{1cs} \end{bmatrix} &\sim \mathcal{N}\left(\begin{bmatrix} \gamma_{0CS} \\ \gamma_{1CS} \end{bmatrix}, \begin{bmatrix} \sigma_{0CS}^2 & \sigma_{01CS} \\ \sigma_{10CS} & \sigma_{1CS}^2 \end{bmatrix}\right) \\
 \text{Level 4: } \pi_{0s} &\sim \mathcal{N}(\gamma_{0S}, \sigma_{0S}^2)
 \end{aligned}$$

Where:

$$\varepsilon_{c,cs,s,t} \sim \mathcal{N}(0, \sigma_{\varepsilon}^2)$$

Using county-sets as an intermediate level between counties and states helped us overcome estimation difficulties with counties with few data points due to suppression. Even when the county level intercept cannot be estimated with accuracy, the presence of a county-set intercept ensures that the county-specific mean is pulled close to the mean for its county-set, thus making efficient use of all the available information.

The yearly-level model follows a structure similar to the monthly model but, due to the smaller sample size, it is less complex. Yearly death rates are modeled as a function of time (in years) and an intercept, both allowed to vary across counties.

$$\begin{aligned} \text{Level 1: } DR_{c,t} &= \pi_{0c} + \pi_{1c} Year_{c,t} + \varepsilon_{c,t} \\ \text{Level 2: } \begin{bmatrix} \pi_{0c} \\ \pi_{1c} \end{bmatrix} &\sim \mathcal{N} \left(\begin{bmatrix} \gamma_{0C} \\ \gamma_{1C} \end{bmatrix}, \begin{bmatrix} \sigma_{0C}^2 & \sigma_{01C} \\ \sigma_{10C} & \sigma_{1C}^2 \end{bmatrix} \right) \end{aligned}$$

Where:

$$\varepsilon_{c,t} \sim \mathcal{N}(0, \sigma_{\varepsilon}^2)$$

In both models, the intercepts and the slopes are allowed to be correlated. To obtain the number of deaths, we multiplied the estimated death rate by the corresponding population. To obtain the monthly number of deaths from the annual number of deaths for the yearly model, we first computed the average proportion of deaths occurring in each month over the 2015-2019 period and then distributed annual deaths accordingly.

To decide whether to use the yearly model or the monthly model, we computed the average percentage difference between the predicted yearly deaths for the period 2015-2019 and the

actual yearly deaths. We then used the estimate from the yearly model for all counties in which the difference was larger than 10%. Applying this decision rule, we used the yearly model for 790 counties and the monthly model for the remaining 2322 counties. Further details about the model section are provided in the **Methods Supplement**.

We obtained confidence intervals for the death rates by sampling from the distribution of the models' fixed effects 1000 times and using these samples to compute 1000 different predicted rates. We then computed the 2.5 and 97.5 percentiles of the resulting distribution. The intervals thus obtained do not reflect all of the models' uncertainty but only the portion due to fixed effects. However, they are consistent with the historical variability in the death rates and can be used to get a sense of the estimates' variability.

This study used de-identified publicly available data and was exempted from review by the Boston University Medical Center Institutional Review Board. Programming code was developed using R, version 4.1.0 (R Project for Statistical Computing) and Python, version 3.7.13 (Python Software Foundation).

Acknowledgements

The authors would like to thank Robert N. Anderson and Farida B. Ahmad from the National Center for Health Statistics for technical assistance with the provisional mortality files used in the present study. We also thank Elif Coskun, Mikas Hansen, Anneliese N. Luck, Sylvia Lutze, Pia MacDonald, and Steele Myrick for their technical support and input on the manuscript. Additionally, we thank Nahid R. Bhadelia and Erica Augustine from the Center for Emerging Infectious Diseases Policy and Research at Boston University for their guidance and support with translation and dissemination of study findings and the Documenting Covid-19 Project at Muckrock for their insightful investigative reporting on uncounted Covid-19 deaths. The authors gratefully acknowledge financial support from the Robert Wood Johnson Foundation (77521), the National Institute on Aging (R01-AG060115-04 and R01-AG060115-04S1) and the W.K. Kellogg Foundation. The views expressed in this paper are those of the authors and not necessarily the views of the study sponsors.

Data Availability

Data used in the present manuscript are publicly available from the Centers for Disease Control and Prevention and U.S. Census Bureau. Additional details about the data and programming code for replicating the analyses of the present study can be accessed at the linked GitHub repository.

https://github.com/Mortality-Surv-and-Reporting-Proj/monthly_county_level_excess_mortality

References

1. T. Andrasfay, N. Goldman, Reductions in 2020 US life expectancy due to COVID-19 and the disproportionate impact on the Black and Latino populations. *Proc. Natl. Acad. Sci. U. S. A.* **118** (2021).
2. S. H. Woolf, R. K. Masters, L. Y. Aron, Effect of the covid-19 pandemic in 2020 on life expectancy across populations in the USA and other high income countries: simulations of provisional mortality data. *BMJ* **373**, n1343 (2021).
3. A. C. Stokes, *et al.*, COVID-19 and excess mortality in the United States: A county-level analysis. *PLoS Med.* **18**, e1003571 (2021).
4. C. A. Ackley, *et al.*, County-level estimates of excess mortality associated with COVID-19 in the United States. *SSM - Population Health* **17**, 101021 (2022).
5. L. M. Rossen, A. M. Branum, F. B. Ahmad, P. D. Sutton, R. N. Anderson, Notes from the Field: Update on Excess Deaths Associated with the COVID-19 Pandemic - United States, January 26, 2020-February 27, 2021. *MMWR Morb. Mortal. Wkly. Rep.* **70**, 570–571 (2021).
6. S. H. Woolf, D. A. Chapman, R. T. Sabo, E. B. Zimmerman, Excess Deaths From COVID-19 and Other Causes in the US, March 1, 2020, to January 2, 2021. *JAMA* (2021) <https://doi.org/10.1001/jama.2021.5199> (April 2, 2021).
7. C. J. Ruhm, Excess Deaths in the United States During the First Year of COVID-19. *NBER Working Paper* (2021) <https://doi.org/10.3386/w29503>.
8. S. H. Woolf, *et al.*, Changes in midlife death rates across racial and ethnic groups in the United States: systematic analysis of vital statistics. *BMJ* **362**, k3096 (2018).
9. J. R. Gill, M. E. DeJoseph, The Importance of Proper Death Certification During the COVID-19 Pandemic. *JAMA* **324**, 27 (2020).
10. S. Elezkurtaj, *et al.*, Causes of death and comorbidities in hospitalized patients with COVID-19. *Sci. Rep.* **11**, 4263 (2021).
11. E. B. Pathak, R. B. Garcia, J. M. Menard, J. L. Salemi, Out-of-Hospital COVID-19 Deaths: Consequences for Quality of Medical Care and Accuracy of Cause of Death Coding. *Am. J. Public Health* **111**, S101–S106 (2021).
12. Y. Xie, E. Xu, B. Bowe, Z. Al-Aly, Long-term cardiovascular outcomes of COVID-19. *Nat. Med.* **28**, 583–590 (2022).
13. Y. Xie, Z. Al-Aly, Risks and burdens of incident diabetes in long COVID: a cohort study. *Lancet Diabetes Endocrinol* (2022) [https://doi.org/10.1016/S2213-8587\(22\)00044-4](https://doi.org/10.1016/S2213-8587(22)00044-4).
14. J. Zhang, Hospital Avoidance and Unintended Deaths during the COVID-19 Pandemic.

- American Journal of Health Economics* **7**, 405–426 (2021).
15. K. E. Anderson, E. E. McGinty, R. Presskreischer, C. L. Barry, Reports of Forgone Medical Care Among US Adults During the Initial Phase of the COVID-19 Pandemic. *JAMA Network Open* **4**, e2034882 (2021).
 16. A. C. Stokes, *et al.*, Association of Health Care Factors With Excess Deaths Not Assigned to COVID-19 in the US. *JAMA Network Open* **4**, e2125287 (2021).
 17. N. D. Volkow, Collision of the COVID-19 and Addiction Epidemics. *Ann. Intern. Med.* **173**, 61–62 (2020).
 18. M. J. Dubey, *et al.*, COVID-19 and addiction. *Diabetes Metab. Syndr.* **14**, 817–823 (2020).
 19. J. Raifman, J. Bor, A. Venkataramani, Association Between Receipt of Unemployment Insurance and Food Insecurity Among People Who Lost Employment During the COVID-19 Pandemic in the United States. *JAMA Netw Open* **4**, e2035884 (2021).
 20. S. Sandoval-Olascoaga, A. S. Venkataramani, M. C. Arcaya, Eviction Moratoria Expiration and COVID-19 Infection Risk Across Strata of Health and Socioeconomic Status in the United States. *JAMA Netw Open* **4**, e2129041 (2021).
 21. R. Roubein, It's getting even harder to tell how many Americans have the coronavirus. *The Washington Post* (2022) (April 21, 2022).
 22. A. C. Stokes, D. J. Lundberg, J. Bor, K. Bibbins-Domingo, Excess Deaths During the COVID-19 Pandemic: Implications for US Death Investigation Systems. *Am. J. Public Health* **111**, S53–S54 (2021).
 23. D. M. Weinberger, *et al.*, Estimation of Excess Deaths Associated With the COVID-19 Pandemic in the United States, March to May 2020. *JAMA Intern. Med.* **180**, 1336–1344 (2020).
 24. , Excess Deaths Associated with COVID-19: Provisional Death Counts for Coronavirus Disease (COVID-19). *Center for Disease Control and Prevention* (2022) (April 18, 2022).
 25. N. Islam, *et al.*, Excess deaths associated with covid-19 pandemic in 2020: age and sex disaggregated time series analysis in 29 high income countries. *BMJ* **373**, n1137 (2021).
 26. K. Brandt, *et al.*, SARS-CoV-2 testing in North Carolina: Racial, ethnic, and geographic disparities. *Health Place* **69**, 102576 (2021).
 27. U.S. Department of Health & Human Services, COVID-19 Diagnostic Laboratory Testing (PCR Testing) Time Series (2020) (April 20, 2022).
 28. H. Cohen-Cline, *et al.*, Major disparities in COVID-19 test positivity for patients with non-English preferred language even after accounting for race and social factors in the United States in 2020. *BMC Public Health* **21**, 2121 (2021).

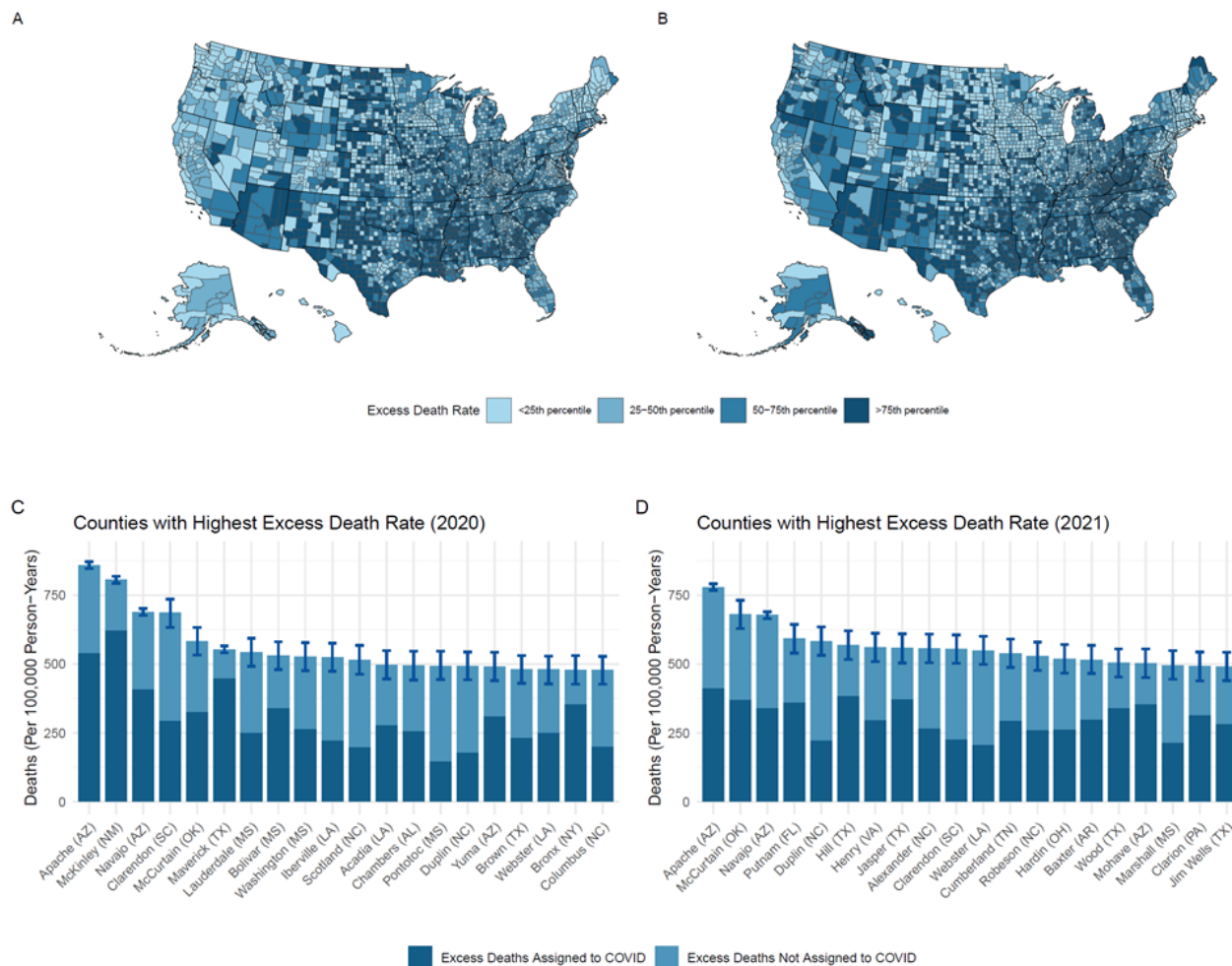
29. T. L. Saitone, K. Aleks Schaefer, D. P. Scheitrum, COVID-19 morbidity and mortality in U.S. meatpacking counties. *Food Policy* **101**, 102072 (2021).
30. G. A. Millett, *et al.*, Assessing differential impacts of COVID-19 on black communities. *Ann. Epidemiol.* **47**, 37–44 (2020).
31. D. F. Cuadros, A. J. Branscum, Z. Mukandavire, F. D. Miller, N. MacKinnon, Dynamics of the COVID-19 epidemic in urban and rural areas in the United States. *Ann. Epidemiol.* **59**, 16–20 (2021).
32. S. A. Karim, H.-F. Chen, Deaths From COVID-19 in Rural, Micropolitan, and Metropolitan Areas: A County-Level Comparison. *J. Rural Health* **37**, 124–132 (2021).
33. H. N. Grome, *et al.*, Disparities in COVID-19 Mortality Rates: Implications for Rural Health Policy and Preparedness. *J. Public Health Manag. Pract.* (2022) <https://doi.org/10.1097/PHH.0000000000001507>.
34. Documenting COVID-19 project and USA TODAY Network, Uncounted: Inaccurate death certificates across the country hide the true toll of COVID-19. *USA Today* (2021) (April 19, 2022).
35. M. R. Nepomuceno, I. Klimkin, D. A. Jdanov, A. Alustiza-Galarza, V. M. Shkolnikov, Sensitivity analysis of excess mortality due to the COVID-19 pandemic. *Popul. Dev. Rev.* (2022) <https://doi.org/10.1111/padr.12475>.
36. I. T. Elo, A. S. Hendi, J. Y. Ho, Y. C. Vierboom, S. H. Preston, Trends in Non-Hispanic White Mortality in the United States by Metropolitan-Nonmetropolitan Status and Region, 1990-2016. *Popul. Dev. Rev.* **45**, 549–583 (2019).
37. D. Bates, M. Mächler, B. Bolker, S. Walker, Fitting Linear Mixed-Effects Models Using lme4. *J. Stat. Softw.* **67**, 1–48 (2015).

Table 1. Excess mortality, Covid-19 mortality, and the ratio of Covid-19 to excess mortality by metropolitan-nonmetropolitan status and BEA region

BEA Region	Metro Status	2020					2021				
		Number of Deaths			Rates per 100,000 PY		Number of Deaths			Rates per 100,000 PY	
		Excess	COVID	Ratio	Excess	COVID	Excess	COVID	Ratio	Excess	COVID
Total	Total	459,764	350,695	0.763	167	127	477,147	415,048	0.870	144	125
Total	Large Central	146,578	111,101	0.758	173	131	123,302	109,824	0.891	122	108
Total	Large Fringe	98,568	82,432	0.836	140	117	87,332	87,734	1.005	103	103
Total	Medium/Small	135,180	97,689	0.723	164	119	161,891	133,750	0.826	163	134
Total	Non Metro	79,438	59,473	0.749	207	155	104,622	83,740	0.800	227	182
Far West	Region Total	52,939	39,938	0.754	112	85	72,562	60,076	0.828	128	127
Far West	Large Central	32,389	24,486	0.756	128	97	37,827	32,883	0.869	126	109
Far West	Large Fringe	6,852	5,022	0.733	95	69	9,258	7,456	0.805	106	86
Far West	Medium/Small	11,853	8,935	0.754	97	73	19,858	15,831	0.797	136	108
Far West	Non Metro	1,845	1,495	0.810	71	58	5,619	3,906	0.695	179	124
Great Lakes	Region Total	73,063	54,660	0.748	186	139	61,766	56,302	0.912	131	143
Great Lakes	Large Central	22,117	16,654	0.753	204	154	13,113	12,153	0.927	101	94
Great Lakes	Large Fringe	17,662	13,111	0.742	165	123	15,597	13,644	0.875	121	106
Great Lakes	Medium/Small	19,546	13,919	0.712	182	130	17,686	16,211	0.917	138	126
Great Lakes	Non Metro	13,738	10,976	0.799	192	154	15,370	14,294	0.930	179	167
Mideast	Region Total	85,924	76,661	0.892	206	184	40,782	55,015	1.349	82	132
Mideast	Large Central	39,938	33,275	0.833	288	240	11,885	16,404	1.380	72	100
Mideast	Large Fringe	30,257	29,937	0.989	174	172	10,283	19,796	1.925	49	94
Mideast	Medium/Small	11,875	10,504	0.885	149	132	12,222	13,237	1.083	127	138
Mideast	Non Metro	3,854	2,945	0.764	157	120	6,392	5,578	0.873	217	189
New England	Region Total	15,752	18,016	1.144	125	144	5,839	11,269	1.930	39	90
New England	Large Central	3,739	4,012	1.073	191	205	709	1,750	2.468	30	75
New England	Large Fringe	5,295	6,731	1.271	116	148	1,208	3,852	3.189	22	71
New England	Medium/Small	5,846	6,579	1.125	128	144	2,187	4,254	1.945	40	77
New England	Non Metro	872	694	0.796	59	47	1,735	1,413	0.814	98	80
Plains	Region Total	29,544	24,705	0.836	164	137	21,150	21,814	1.031	98	121
Plains	Large Central	3,561	2,764	0.776	150	117	2,433	2,167	0.891	86	77
Plains	Large Fringe	5,968	4,578	0.767	142	109	4,712	4,645	0.986	93	92
Plains	Medium/Small	9,518	7,464	0.784	157	123	6,005	6,305	1.050	82	86
Plains	Non Metro	10,497	9,899	0.943	196	184	8,000	8,697	1.087	124	135
Rocky Mountain	Region Total	11,815	8,649	0.732	113	83	14,193	12,516	0.882	112	118
Rocky Mountain	Large Central	1,717	1,223	0.712	108	77	907	1,031	1.137	48	54
Rocky Mountain	Large Fringe	2,889	2,114	0.732	116	85	2,749	2,078	0.756	91	69
Rocky Mountain	Medium/Small	4,174	3,068	0.735	102	75	5,776	5,282	0.914	115	105
Rocky Mountain	Non Metro	3,035	2,244	0.739	132	98	4,761	4,125	0.866	171	148
Southeast	Region Total	124,271	81,065	0.652	175	114	175,879	130,234	0.740	205	182
Southeast	Large Central	19,341	12,753	0.659	148	98	24,800	18,120	0.731	159	116
Southeast	Large Fringe	23,284	16,312	0.701	129	91	33,283	26,869	0.807	153	123
Southeast	Medium/Small	48,893	30,717	0.628	177	111	72,189	52,697	0.730	216	158
Southeast	Non Metro	32,753	21,283	0.650	262	170	45,607	32,548	0.714	304	217
Southwest	Region Total	66,456	47,001	0.707	188	133	84,976	67,822	0.798	198	190
Southwest	Large Central	23,776	15,934	0.670	150	100	31,628	25,316	0.800	165	132
Southwest	Large Fringe	6,361	4,627	0.727	110	80	10,242	9,394	0.917	143	131
Southwest	Medium/Small	23,475	16,503	0.703	254	178	25,968	19,933	0.768	233	179
Southwest	Non Metro	12,844	9,937	0.774	288	223	17,138	13,179	0.769	320	246

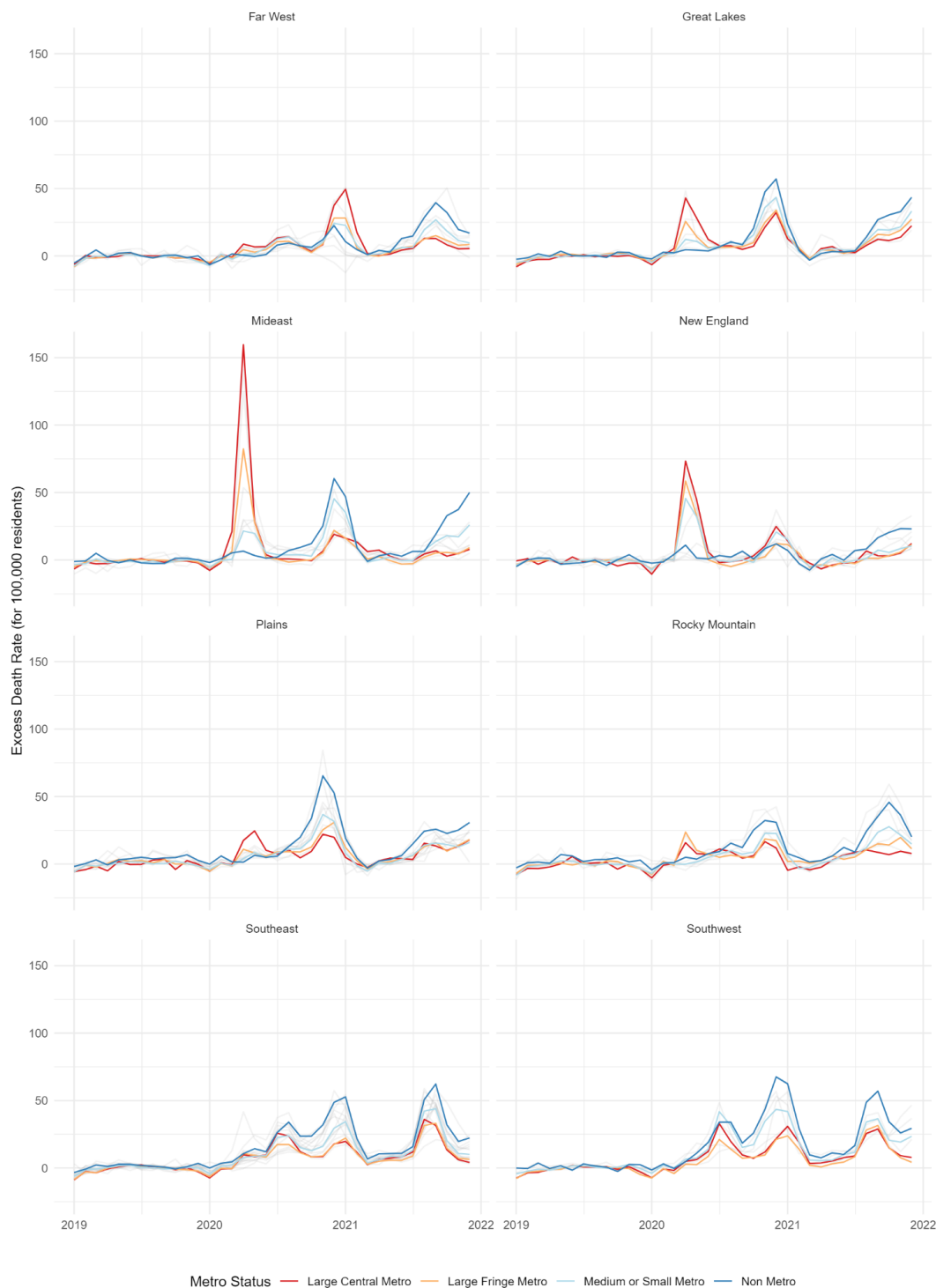
Notes: Death rates were calculated by aggregating deaths and population over counties within each BEA region and metropolitan-non-metropolitan area. Estimates for 2020 correspond to the period March - December 2020. Estimates for 2021 refer to the period January to December, 2021.

Figure 1. County excess mortality rates per 100,000, 2020-2021



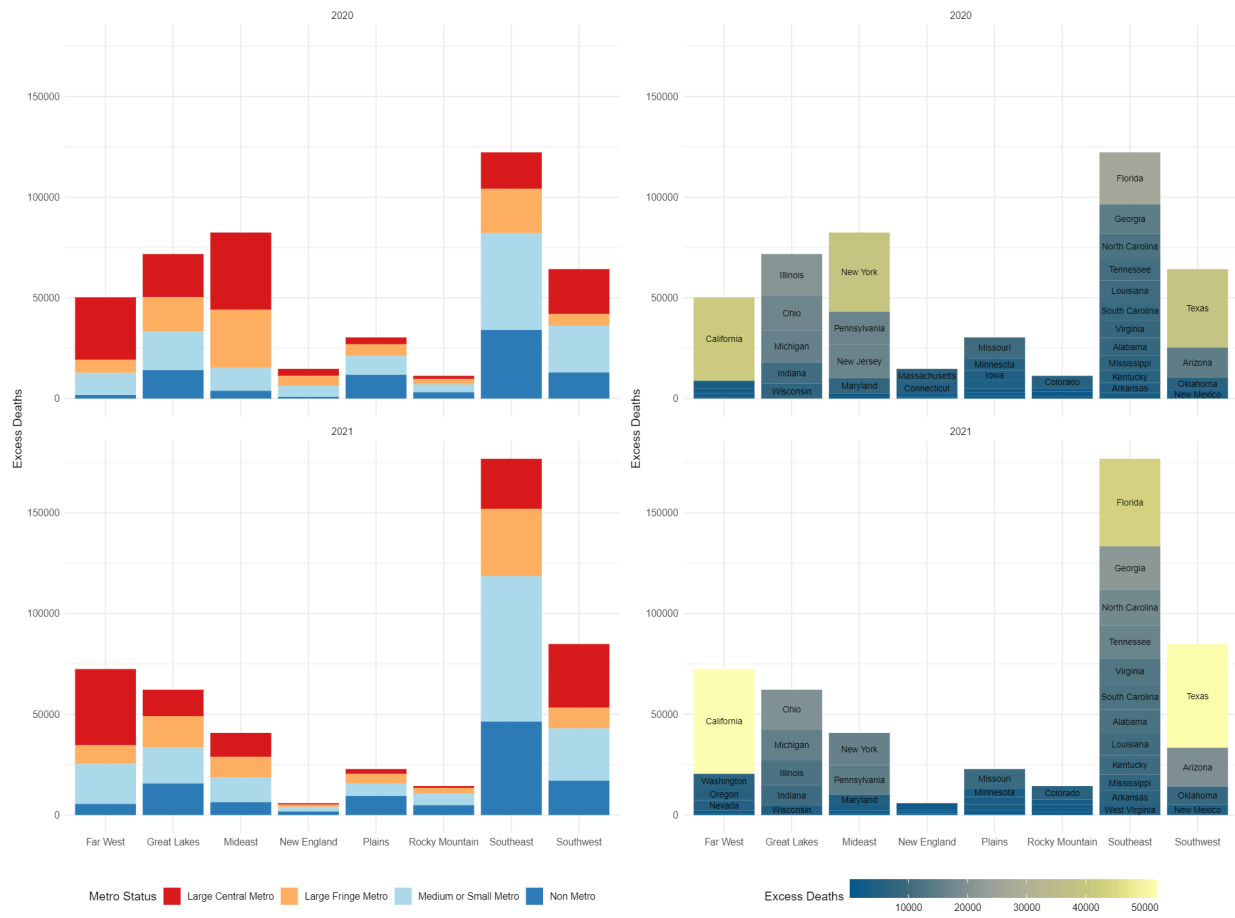
Notes: Panels A and B show the geographic distribution of excess death rates in 2020 (A) and 2021 (B) as estimated by comparing the expected number of deaths from our model to the actual number of deaths. Panels C and D report excess and COVID deaths rates for the counties with the highest excess deaths rates 2020 and 2021 respectively. Counties with less than 30,000 residents and less than 60 COVID deaths across the two years were excluded from the rankings in the barplots.

Figure 2. Monthly Excess Deaths Rates by BEA Region and Metro Status, 2019-2021



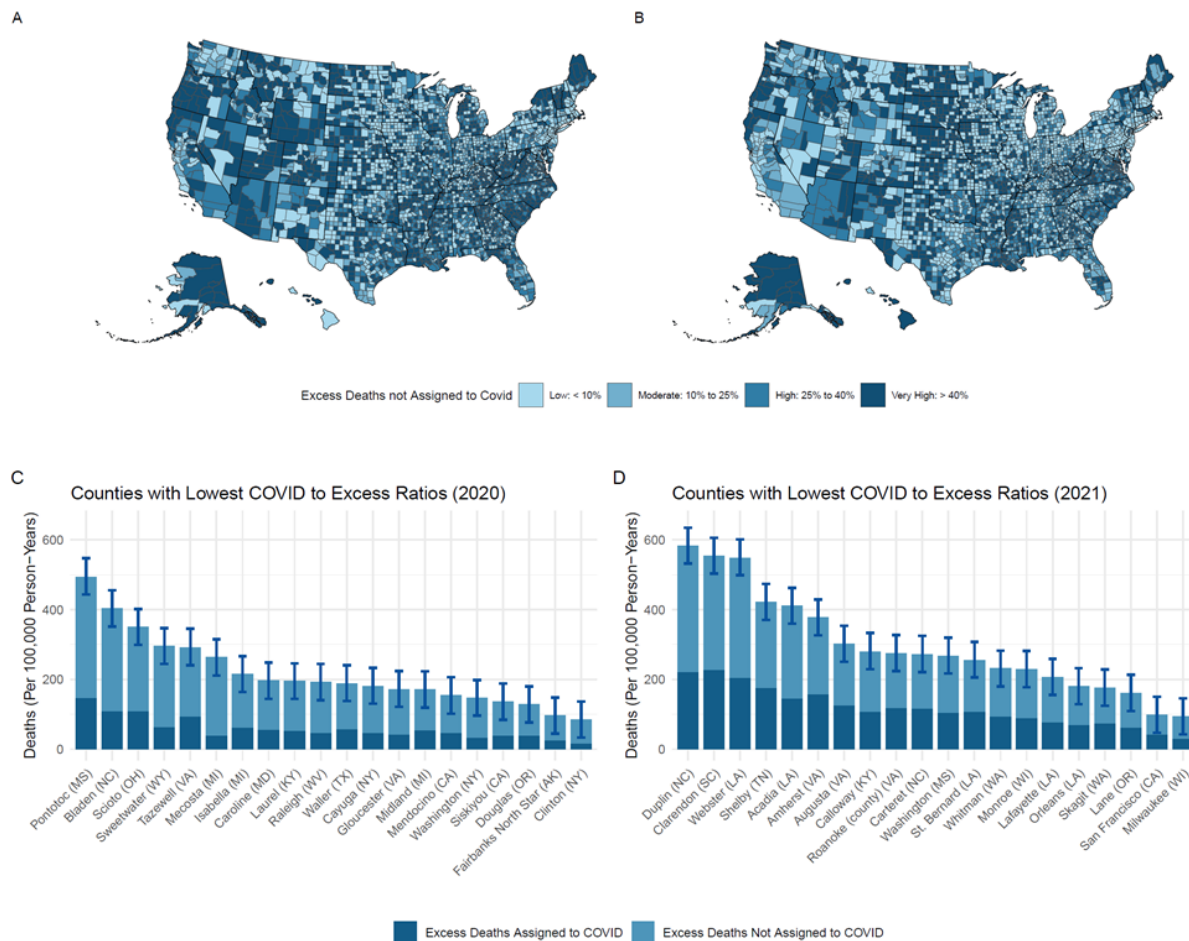
Notes: This graph shows aggregated trends in excess mortality at the monthly level between 2019-2021 stratified by BEA region and metro status.

Figure 3. Excess Deaths by BEA Region and Metro Status, and by State, 2020-2021



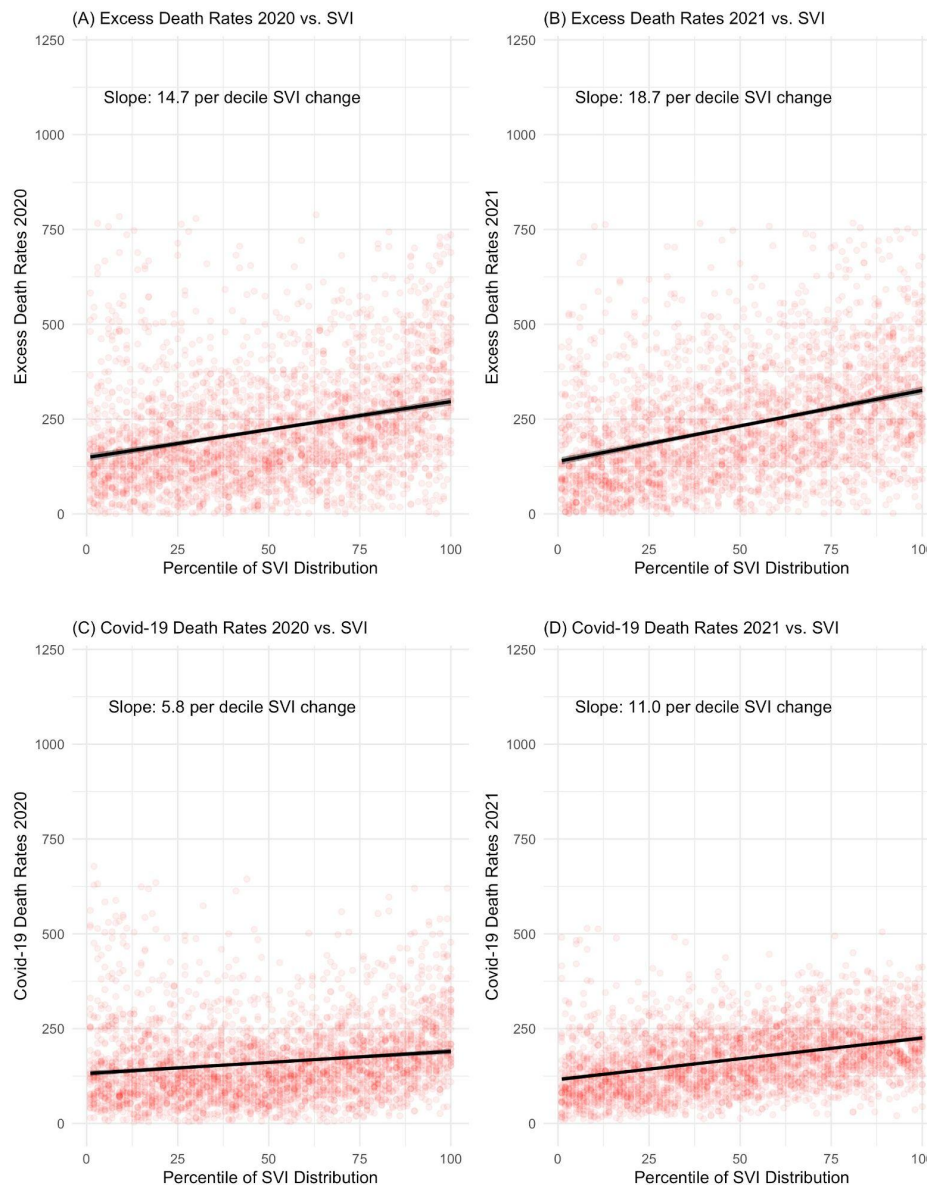
Notes: The first panel presents absolute excess deaths by BEA region and metro status; the second panel shows excess deaths disaggregated by state.

Figure 4. Percentage of Excess Deaths not Assigned to Covid-19, 2020-2021



Notes: Panels A and B show the geographic distribution of proportion of excess deaths not assigned to COVID. Panels C and D report excess and COVID deaths rates for the counties with the lowest COVID to excess ratios in 2020 and 2021 respectively. Counties with less than 30,000 residents and less than 60 COVID deaths across the two years were excluded from the rankings in the barplots.

Figure 5. Association of the social vulnerability index with Covid-19 and excess mortality rates across counties



Notes: Slopes were calculated using unweighted linear regression. SVI refers to the social vulnerability index – a multi-modal measure developed by the CDC that incorporates socioeconomic status, household composition and disability, minority status and language, and housing type and transportation.

Supplementary Information

Paglino E, Lundberg DJ, Cho A, Wasserman JA, Raquib R, Elo IT, Hempstead K, Preston SH, Stokes AC. Excess all-cause mortality across counties in the United States, March 2020 to December 2021.

Table S1. Excess mortality, Covid-19 mortality, and the ratio of Covid-19 to excess mortality by US state.

Table S2. Performance of different models on training and test data.

Figure S1. Actual and expected mortality trends by month at the national level, 2015-2021

Figure S2. Time-series plots for the largest counties in each BEA region and metro-status combination

Figure S3. A Comparison of Excess and Covid-19 Deaths across BEA Regions and Metro Status.

Methods Supplement. Details on data extraction, geographic classifications, model selection and estimation

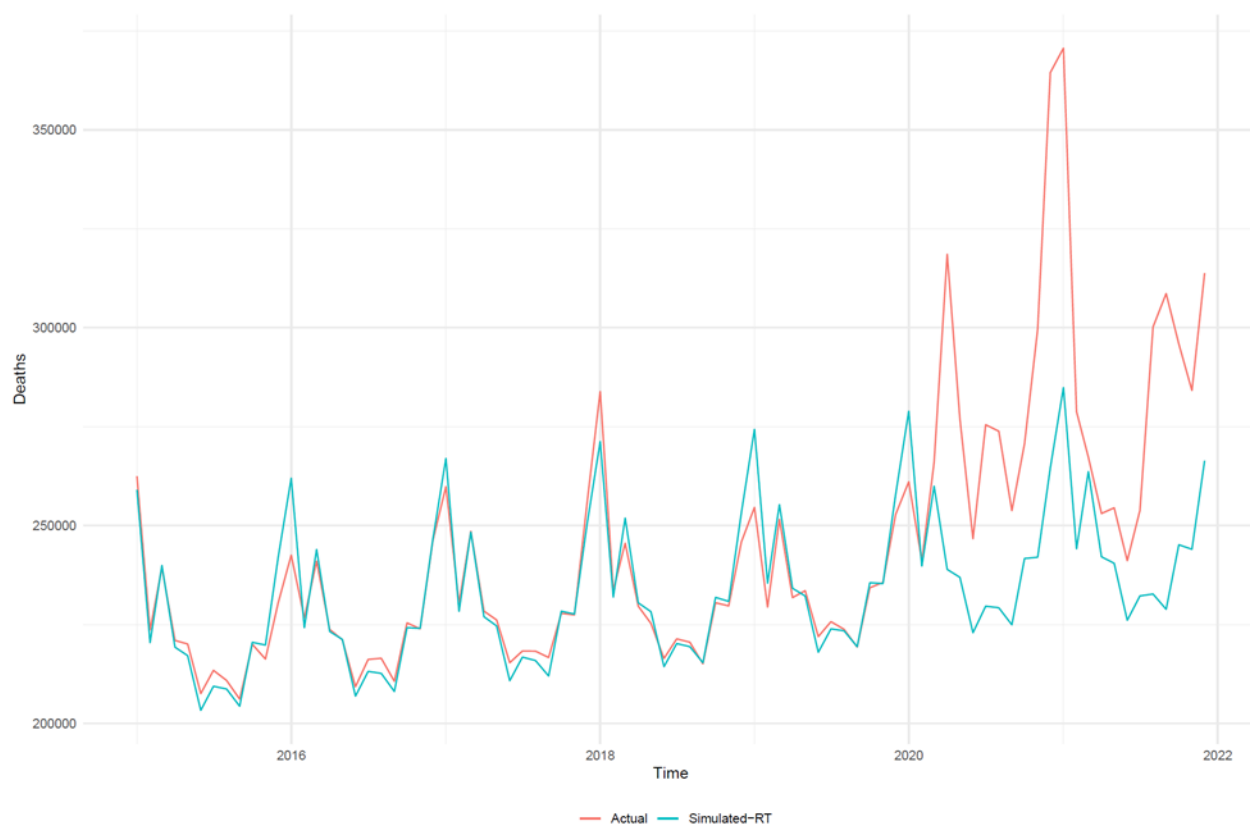
Table S1. Excess mortality, Covid-19 mortality, and the ratio of Covid-19 to excess mortality by US state

State	2020					2021				
	Number of Deaths			Rates per 100,000 PY		Number of Deaths			Rates per 100,000 PY	
	Excess	COVID	Ratio	Excess	COVID	Excess	COVID	Ratio	Excess	COVID
Alabama	9,002	6,543	0.727	216	157	11,959	9,474	0.792	237	188
Alaska	478	275	0.575	78	45	1,368	729	0.533	187	100
Arizona	14,755	8,447	0.572	246	141	19,246	12,690	0.659	265	175
Arkansas	4,938	3,520	0.713	197	140	6,455	4,726	0.732	213	156
California	42,806	31,339	0.732	130	95	51,982	44,435	0.855	132	113
Colorado	6,432	4,346	0.676	133	90	6,708	5,277	0.787	115	91
Connecticut	5,826	5,782	0.992	194	193	1,304	2,719	2.085	36	75
Delaware	1,430	1,008	0.705	173	122	1,341	1,111	0.828	134	111
District of Columbia	1,121	831	0.741	195	144	810	463	0.572	120	69
Florida	27,150	19,230	0.708	151	107	43,434	34,509	0.795	200	159
Georgia	14,921	9,431	0.632	167	106	21,443	15,774	0.736	199	146
Hawaii	199	342	1.719	17	28	795	682	0.858	55	47
Idaho	1,327	1,350	1.017	86	88	2,418	2,387	0.987	128	126
Illinois	20,979	15,717	0.749	197	148	12,299	11,267	0.916	97	89
Indiana	10,496	8,520	0.812	186	151	9,516	8,545	0.898	140	126
Iowa	4,492	4,315	0.961	169	163	2,281	3,059	1.341	71	96
Kansas	3,964	3,287	0.829	162	135	3,579	3,567	0.997	122	122
Kentucky	5,925	4,112	0.694	158	110	9,488	7,434	0.784	210	165
Louisiana	10,394	6,520	0.627	268	168	10,573	6,322	0.598	228	137
Maine	454	419	0.923	40	37	1,737	1,330	0.766	127	97
Maryland	8,275	5,995	0.724	161	117	5,073	5,251	1.035	82	85
Massachusetts	7,222	9,329	1.292	124	160	1,002	4,870	4.860	14	70
Michigan	16,246	11,398	0.702	194	136	15,365	13,588	0.884	153	135
Minnesota	5,861	5,211	0.889	123	110	4,152	4,429	1.067	73	78
Mississippi	7,431	4,460	0.600	301	181	8,007	5,076	0.634	271	172
Missouri	10,296	7,129	0.692	201	139	9,269	7,717	0.833	150	125
Montana	1,315	1,125	0.856	145	124	1,703	1,594	0.936	155	145
Nebraska	2,148	2,079	0.968	132	127	1,051	1,653	1.573	54	84
Nevada	3,937	3,242	0.823	152	125	5,338	5,136	0.962	170	164
New Hampshire	747	766	1.025	65	67	823	1,111	1.350	59	80
New Jersey	17,156	16,497	0.962	223	215	2,928	8,402	2.870	32	91
New Mexico	4,192	2,851	0.680	238	162	5,277	3,464	0.656	249	164
New York	40,721	35,723	0.877	244	214	16,006	21,650	1.353	81	109
North Carolina	12,842	7,874	0.613	147	90	17,638	13,551	0.768	167	129
North Dakota	1,218	1,203	0.988	188	186	159	629	3.956	21	81
Ohio	17,793	13,605	0.765	181	139	19,658	18,244	0.928	167	155
Oklahoma	6,300	4,832	0.767	191	146	8,783	7,230	0.823	221	182
Oregon	2,315	1,444	0.624	66	41	6,088	3,664	0.602	143	86
Pennsylvania	17,221	16,607	0.964	159	154	14,624	18,138	1.240	113	140
Rhode Island	1,283	1,585	1.235	141	174	481	978	2.033	44	89
South Carolina	9,367	5,277	0.563	219	123	12,448	9,062	0.728	240	175
South Dakota	1,565	1,481	0.946	211	200	659	760	1.153	74	85
Tennessee	10,929	6,831	0.625	190	119	16,309	11,874	0.728	234	170
Texas	41,209	30,871	0.749	169	127	51,670	44,438	0.860	175	151
Utah	1,879	1,367	0.728	69	50	1,988	2,241	1.127	60	67
Vermont	220	135	0.614	41	25	492	261	0.530	76	40
Virginia	8,805	5,789	0.657	123	81	12,807	8,874	0.693	148	103
Washington	3,204	3,296	1.029	50	51	6,991	5,430	0.777	90	70
West Virginia	2,567	1,478	0.576	172	99	5,318	3,558	0.669	298	199
Wisconsin	7,549	5,420	0.718	154	111	4,928	4,658	0.945	84	79
Wyoming	862	461	0.535	179	96	1,376	1,017	0.739	238	176

Notes: Death rates were calculated by aggregating deaths and population over counties within each state.

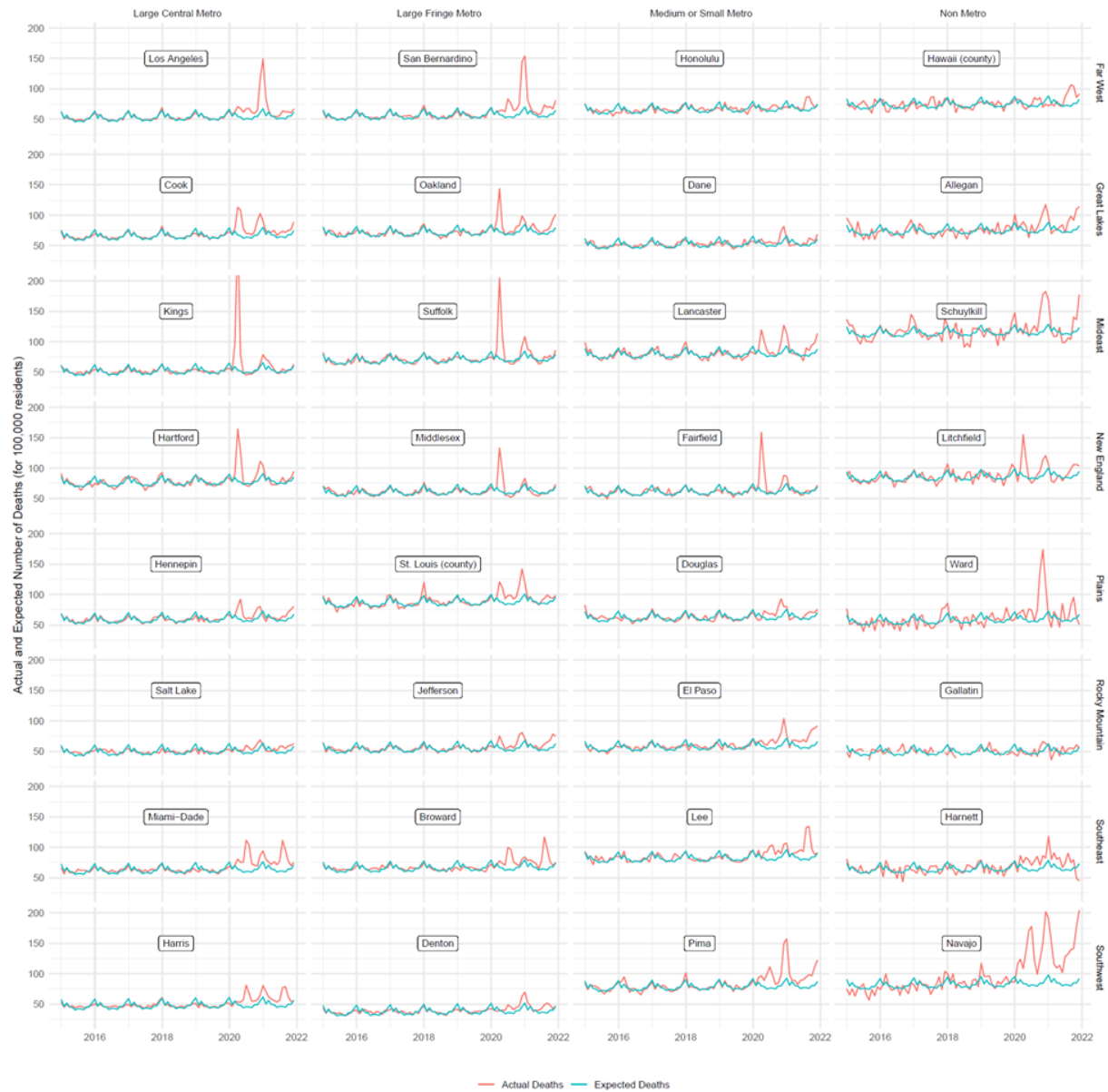
Estimates for 2020 correspond to the period March - December 2020. Estimates for 2021 refer to the period January to December, 2021.

Figure S1. Actual and expected mortality trends by month at the national level, 2015-2021



Notes: Monthly trends in actual and expected deaths at the national level are obtained by aggregating the estimates from the county level.

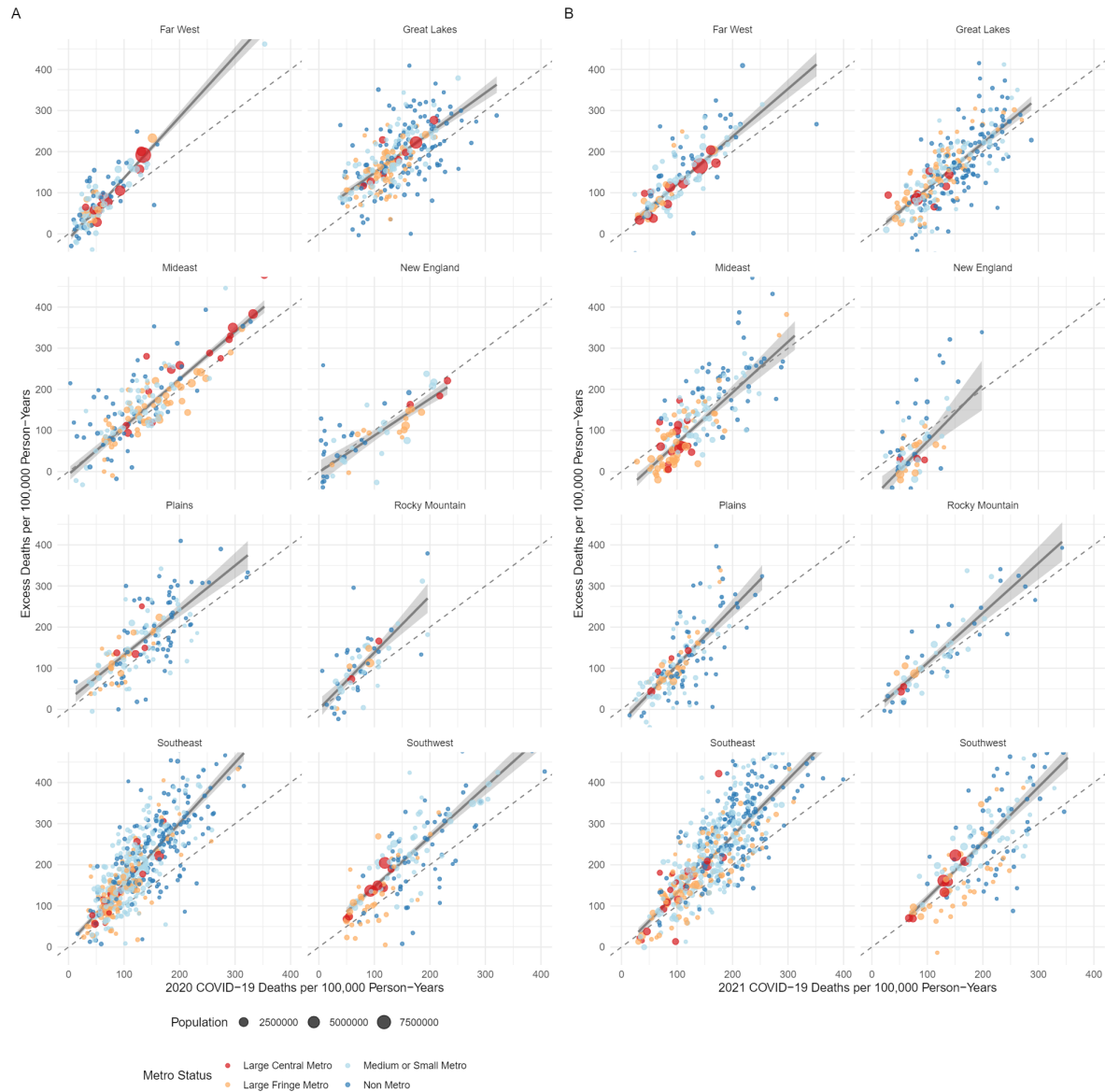
Figure S2. Time-series plots for the largest counties in each BEA region and metro-status combination



Notes: The plot shows the largest counties within each BEA region and metro status category.

Time series of actual and expected all-cause deaths per 100,000 are plotted over 2015-2021.

Figure S3. A Comparison of Excess and Covid-19 Deaths across BEA Regions and Metro Status.



Notes: Panels A and B show the relationship between COVID and excess deaths in 2020 and 2021 respectively. Counties with less than 30,000 residents were excluded. The regression lines reflect the coefficients of a set of regressions of COVID deaths on excess deaths within each BEA region using population as weights.

Methods Supplement

Data Extraction from CDC WONDER

The CDC WONDER online database query system found at <https://wonder.cdc.gov/> was used to extract all mortality data used in this project. To obtain death counts for all-causes mortality, we used the Multiple Cause of Death (Final) database from 1999-2020. We obtained two sets of extracts, one for data at the county-year level and one for data at the county-month level.

For county-year extracts, the data request was submitted for the time period of interest using the request form with the following settings changed from the default:

- Tab 1. Organize table layout: Group results by County and by Year
- Tab 4. Select time period of death: specific period
- Tab 6. Select underlying cause of death: *All* (All Causes of Death)
- Tab 8. Other options: checking Export Results and Show totals. The request generates a text file.

For county and month for the years 1999 through 2019, the data was extracted using six month time periods due to limitations of the CDC Wonder servers. The data request was submitted for each time period of interest using the request form with the following settings changed from the default:

- Tab 1. Organize table layout: Group results by County and by Month
- Tab 4. Select time period of death: specific period (6 months at a time)
- Tab 6. Select underlying cause of death: *All* (All Causes of Death)
- Tab 8. Other options: checking Export Results and Show totals. The request generates a text file.

To extract data for the time periods of March 2020 to December 2021, we used the Multiple Cause of Death (Provisional) database from 2018 – Last Month database. The data requests were submitted for each time period of interest using the request form with the following settings changed from the default:

- Tab 1. Organize table layout: Group results by County and by Year
- Tab 4. Select time period of death: March 2020 to December 2021
- Tab 6. Select underlying cause of death: *All* (All Causes of Death)
- Tab 8. Other options: checking Export Results and Show totals. The request generates a text file.

To extract counts of COVID deaths for 2020 and 2021 at the county-year level we used the Multiple Cause of Death (Provisional) database from 2018 – Last Month database. The data requests were submitted for each time period of interest using the request form with the following settings changed from the default:

- Tab 1. Organize table layout: Group results by County and by Year
- Tab 4. Select time period of death: March 2020 to December 2021
- Tab 6. Select underlying cause of death: U07.1 (COVID-19)
- Tab 8. Other options: checking Export Results and Show totals. The request generates a text file.

Geographic Classifications

USDA/ERS/NCHS Metropolitan-Nonmetropolitan Categories:

- **Large central metros:** counties in metropolitan statistical areas with a population of more than 1 million.

- **Large fringe metros:** counties that surrounded the large central metros
- **Small or medium metros:** counties in metropolitan statistical areas with a population between 50,000 and 999,999.
- **Nonmetropolitan areas:** all other counties.

BEA Regions:

- **New England:** Connecticut, Maine, Massachusetts, New Hampshire, Rhode Island, and Vermont
- **Mideast:** Delaware, District of Columbia, Maryland, New Jersey, New York, and Pennsylvania
- **Great Lakes:** Illinois, Indiana, Michigan, Ohio, and Wisconsin
- **Plains:** Iowa, Kansas, Minnesota, Missouri, Nebraska, North Dakota, and South Dakota
- **Southeast:** Alabama, Arkansas, Florida, Georgia, Kentucky, Louisiana, Mississippi, North Carolina, South Carolina, Tennessee, Virginia, and West Virginia
- **Southwest:** Arizona, New Mexico, Oklahoma, and Texas
- **Rocky Mountain:** Colorado, Idaho, Montana, Utah, and Wyoming
- **Far West:** Alaska, California, Hawaii, Nevada, Oregon, and Washington

County-Sets:

- Counties with populations greater than or equal to 50,000 were not grouped into county-sets
- Counties with populations less than 50,000 were grouped with contiguous counties to form county-sets with populations greater than 50,000
- County-sets did not cross state borders

Model Selection and Estimation

Before settling on the models used in the paper (Random Time), we tested a simple model (Base), as well as a more complex one (Random Time Plus). Model Base shares the fixed effect of the Random Time model described in the methods section but has a simpler random effects structure including only random intercepts for counties. Model Random Time Plus borrows the random effects structure of the Random Time model but allows the month dummy variables (used to capture seasonality) to vary across census regions. We hypothesized that, because seasonal patterns in mortality are not uniform across the United States, such a model would have

achieved a better fit. To evaluate the model performance, we trained them on data for the period 2014-2018 and then tested them on data for 2019. Table S2 reports the Root Mean Squared Error for all models. While the Random Time Plus model outperformed the two simpler alternatives in the training data, the Random Time model achieved the best performance in the test data. This suggests that the Random Time Plus Model was overfitting the training data to a larger extent compared to the simpler models. Because the Random Time model outperformed the Base Model in all data sets, we chose to use it as the final model in the paper.

Table S2. Model Performance Results (Root Mean Squared Error)

Performance	Base	Random Time	Random Time Plus
Training Data (2014-2018)	17.037	16.989	16.972
Test Data (2019)	17.981	17.955	17.961
Overall	17.231	17.187	17.175