

1 **Adults' self-reported barriers and enablers to riding a bike for**  
2 **transport: a systematic review**

3 Lauren Pearson<sup>a\*</sup>, Danielle Berkovic<sup>a</sup>, Sandy Reeder<sup>a</sup>, Belinda Gabbe<sup>a</sup>, and  
4 Ben Beck<sup>a</sup>

5 <sup>a</sup> *School of Public Health and Preventive Medicine, Monash University, Melbourne,*  
6 *Australia*

7 <sup>b</sup> *Health Data Research UK, Swansea University, Swansea, United Kingdom*

8

9 \*Lauren Pearson

10 Sustainable Mobility and Safety Research

11 School of Public Health & Preventive Medicine

12 Monash University, Melbourne, Australia

13 Email: [lauren.pearson@monash.edu](mailto:lauren.pearson@monash.edu)

14

15 Adults' self-reported barriers and enablers to riding a bike for transport: a  
16 systematic review  
17

18 Riding a bike for transport purposes is an effective way to improve population  
19 and environmental health. Despite this, participation levels in many countries are  
20 low. Identifying the barriers and enablers to riding a bike for transport is essential  
21 to developing interventions that encourage bike riding. In this mixed-methods  
22 systematic review, we aimed to identify the perceived barriers and enablers to  
23 adults riding a bike for transport in Organisation for Economic Development  
24 (OECD) countries. A systematic database search was conducted to identify  
25 relevant peer-reviewed and grey literature. Fifty-five papers/reports met  
26 eligibility criteria. There were 34 barriers and 21 enablers identified. The leading  
27 barriers related to riding on the road alongside motor vehicles. Other factors  
28 identified included the provision and quality of cycling infrastructure, personal  
29 factors such as physical fitness, attitudinal factors such as community perceptions  
30 of cyclists, and environmental factors. While this review highlights the  
31 complexity of factors that influence the uptake of riding a bike for transport,  
32 many of the leading factors could be overcome through the provision of high-  
33 quality protected infrastructure for bike riders. Other interventions to address  
34 other known barriers and enablers are needed to increase the uptake of bike  
35 riding.

36

37 Keywords: active transport, cycling, mobility, mixed-methods

38

## 39 **Introduction**

40           The health benefits of riding a bike are vast and well established, including  
41 improved cardiorespiratory fitness, cognitive function and mental wellbeing (Celis-  
42 Morales et al., 2017; Leyland et al., 2019; Nordengen et al., 2019). Beyond this, an  
43 increase in trips made by bike has the potential to reduce traffic congestion,  
44 environmental pollutants, and offer economic benefits to both individuals and  
45 governments (Litman, 2015; Pérez et al., 2017; Rabl & De Nazelle, 2012). A large  
46 proportion of trips made by car are a distance that could potentially be made by bike  
47 (Beck, 2021; Department of Transport, 2021; Harper, 2021; Vagane, 2007),  
48 highlighting the potential for increased participation in bike riding for transport, in  
49 addition to for recreational purposes.

50

51           Despite the benefits of bike riding, and increased accessibility from e-bikes  
52 (Fishman & Cherry, 2016; Fyhri et al., 2017), moving away from car-based transport  
53 and towards bike riding has become a considerable cultural, behavioural and political  
54 challenge (Agarwal & Gupta, 2021; Kent, 2015; Richards et al., 2011; Wilson & Mitra,  
55 2020). Recognising what facilitates, and what prevents people from choosing to cycle  
56 for transport permits informed decisions for cycling infrastructure, promotion  
57 campaigns and policy reform for government and advocacy organisations.

58

59           There are several studies that report the barriers and enablers of riding a bike for  
60 transport in local populations, cited regularly throughout active transport-related  
61 literature. However, these study findings are often extrapolated to populations with  
62 potentially different circumstances. Further, there are a variety of measures and  
63 populations reported, limiting the potential for comparison between studies.

64

65           There is, at present, no peer-reviewed systematic review that synthesises the  
66 findings of, and appraises the quality of studies, from multiple contexts of the barriers  
67 and enablers to riding a bike for transport. This review is important because it allows for  
68 identification of potential issues in measurement of barriers and enablers, areas of  
69 needed research, and consistencies and differences between countries.

70

71           The aim of this systematic review was to identify the perceived barriers and  
72 enablers to adults' participation in riding a bike for transport. The inclusion of  
73 qualitative research in this systematic review attempted to represent some of these lived  
74 experiences while still maintaining large-scale quantitative studies to facilitate  
75 generalisability and reproducibility.

## 76 **Methods**

77           Systematic searches of databased of peer-reviewed scientific and grey literature  
78 were undertaken to identify the barriers and enablers of riding a bike for transport in  
79 Organisation for Economic Co-operation and Development (OECD) countries (OECD,  
80 2020). Both quantitative and qualitative studies were included, and no publication year  
81 limits were applied due to the limited published synthesis of data prior to this review.  
82 Trips made by bike exclusively for transport purposes were chosen as they have likely  
83 differing barriers and enablers than when trips are made for recreation. Transport  
84 included any journey made to travel to a destination, such as commuting and to travel to  
85 shops. Most OECD member countries are high-income and developed economies  
86 (Canser et al., 2016). Because of this, they share similar cycling infrastructure, laws and  
87 volumes of traffic (Buehler & Pucher, 2017). Due to these similarities, only OECD

88 countries were included in this review to allow for meaningful comparisons. The review  
89 included papers published up to the 5<sup>th</sup> February, 2021, when the search was conducted.

90 ***Eligibility criteria:***

91 Primary studies published in a peer-reviewed journal or grey literature were eligible for  
92 inclusion if they:

- 93 • reported on either the perceived barriers or enablers of riding a bike for transport  
94 purposes (including initiating participation, or riding more than they currently  
95 do),
- 96 • recruited an adult population,
- 97 • were published in English and;
- 98 • were conducted in an OECD country.

99 Bikes were defined as manual pushbikes and electric bikes. Where trip purpose was not  
100 defined in full-text, the paper was excluded. Perceived barriers and enablers included  
101 factors that participants reported as either preventing them or encouraging them to ride a  
102 bike hypothetically.

103

104 To enable findings between homogenous study types to be synthesised, we focussed on  
105 studies that stated self-reported barriers and/or enablers to cycling. Studies that aimed to  
106 elucidate potential behaviours based on a selection of factors (such as stated preference  
107 surveys) or studies that modelled associations between self-reported barriers and  
108 frequency of cycling, without reporting the aggregate self-reported barriers and enablers  
109 data for the sample, were excluded.

110

111 ***Peer-reviewed Literature***

112 Peer-reviewed published articles were systematically searched in Ovid Medline, Ovid  
113 PsycINFO, Embase, Scopus, Transport Research Information Database (TRID) and  
114 EBSCO CINAHL using terms generated through thorough consultation with a librarian  
115 and text mining. Text mining involved identifying sentinel papers on the research  
116 question and using keywords and title words to develop a list of terms to include in the  
117 search. These combined various components including active transport or bicycling and  
118 barriers, enablers, attitudes and behaviours. The full list of search terms are shown in  
119 Supplementary Materials D. The online platform ‘Covidence’ (Covidence, 2020) was  
120 used to store articles imported from databases and facilitate organised and blinded  
121 screening. Two independent reviewers screened results first by title and abstract,  
122 followed by full-text for adherence to inclusion and exclusion criteria. Conflicts  
123 between reviewers about which studies to include were discussed by reviewer one and  
124 two until consensus was reached, or if this was not possible a third reviewer was  
125 consulted.

126

127 Following article screening, a hand-search of the reference list of included studies was  
128 conducted by a study author to identify further relevant literature.

129 ***Grey Literature***

130 Research regarding bike riding is often conducted by government and bicycling  
131 advocacy organisations. For this reason, a grey literature search was conducted as this  
132 type of research is often not peer-reviewed. The term “barriers and enablers of cycling”  
133 was systematically searched in Google, Analysis and Policy Observatory (APO), TRID  
134 and the OECD Library. An Advanced Search was performed using Google and limiting  
135 the search criteria to each OECD country. Through consultation with a librarian

136 specialist in grey literature searching, it was decided that the first 50 results produced by  
137 Google would be used. Reviewer one conducted these searches and screen-captured the  
138 results, before compiling them into a document. Each result in the document was then  
139 screened by title and description (where available) by reviewer one and two. Reviewers  
140 were blinded to each other's results until completion. The method used in resolving  
141 conflicts in the peer-reviewed literature was repeated.

#### 142 *Quality Assessment*

143 The Joanna Briggs Critical Appraisal Tools were used to assess the methodological  
144 rigour of peer-reviewed literature (Munn et al., 2014). Tools were specific to study  
145 design and included closed questions regarding the methodology, recruitment, analysis  
146 and conclusions of the study. Possible answers included 'yes', 'no', 'unclear' or 'not  
147 applicable'.

148  
149 Reviewers one and two conducted quality assessment independently for each  
150 peer-reviewed article after full-text screening. When complete, results of quality  
151 assessments were compared. Where there were differences of more than 20%, reviewers  
152 discussed until consensus or consulted with reviewer three. A mean appraisal score was  
153 then calculated for each article based on the proportion of quality appraisal checklist  
154 items met by the study. Articles scoring 50% or below on the mean appraisal score were  
155 not included in the review to ensure only high-quality literature was synthesised.

156  
157 Grey literature was appraised using the Authority, Accuracy, Coverage,  
158 Objectivity, Date & Significance (AACODS) Checklist (Tyndall, 2010), a critical  
159 appraisal tool specific to grey literature. The AACODS Checklist comprises appraisal of  
160 literature based on the accuracy, authority, coverage, objectivity, date and significance.

161 The appraisal process used in the peer-reviewed literature assessment was repeated for  
162 the grey literature.

### 163 ***Data Extraction***

164 Data were extracted on study and participant characteristics and study findings (barriers  
165 and enablers). An iterative process was employed to categorise barriers and enablers  
166 into broader themes. Outcome measures were extracted for quantitative studies, and  
167 participation characteristic and quotes extracted from qualitative studies.

168

169 Where data were reported as the proportion of the sample that agreed that a particular  
170 factor was a barrier or enabler (binary outcome), the population sample size and  
171 outcome were extracted for inclusion in a meta-analysis. Due to the variability in  
172 outcome measures, meta-analyses of other data types beyond binary outcomes were not  
173 possible. To be included in the meta-analysis, study questions, study populations and  
174 outcome measures needed to be comparable. Meta-analyses were conducted in RStudio  
175 (RStudio Team, 2020) with the ‘meta’ package (Schwarzer & Schwarzer, 2012). Due to  
176 the diversity of populations included in the meta-analyses, random effects models were  
177 most suited. Where heterogeneity was high, a restricted maximum likelihood indicator  
178 was used.

### 179 ***Synthesis***

180 A segregated approach was used to synthesise quantitative and qualitative data  
181 (Lizarondo L, 2020). Quantitative data were extracted into a table and meta-analysis  
182 performed where possible. If meta-analyses were not possible, data were extracted into  
183 a separate table for inclusion in supplementary material. Qualitative data were extracted  
184 into a table, analysed through coding and quotes presented to illustrate higher level



185 categories of codes. Findings of qualitative and quantitative analyses were reported  
186 alongside each other where findings overlapped.

187 *Quantitative data*

188 All quantitative data regarding study characteristics were extracted into a table.  
189 Outcome data were extracted into two separate tables exclusively for either barriers or  
190 enablers. If data were presented stratified into groups, overall cohort data were  
191 extracted.

192 *Qualitative data*

193 Quotes extracted from qualitative studies were analysed with an inductive approach of  
194 thematic coding as described by Gibbs (Gibbs, 2007). All quotes were retrieved from  
195 included articles that met selection criteria. Quotes were coded with the same label  
196 where they were an example of the same phenomenon, idea or explanation. Codes were  
197 organised to provide meaning and structure to the data, leading to higher level  
198 categories based on their relationships with each other. To describe each of these  
199 categories, quotes were used in results. Analysis was conducted by two reviewers for  
200 credibility and rigour.

201 **Results**

202 There were 4,602 records screened, of which 60 studies met inclusion criteria (Figure  
203 1). To be included in the meta-analysis, study questions walking and cycling data being  
204 aggregated, the study not reporting on barriers and/or enablers, and the study reporting  
205 only on actual barriers and enablers that were calculated from self-reports and  
206 infrastructure than surrounded the participant, or from self-reports and their frequency  
207 of cycling.

208

209 Through quality assessment, 7 publications and 2 grey literature reports did not meet the  
210 requirements. Reasons included lack of information about participants and recruitment,  
211 and lack of clarity in the measurement and reporting of outcomes (see Supplementary  
212 Materials A).  
213

214

215

216

217

218

219

220

221

222

223

224

225

226

227

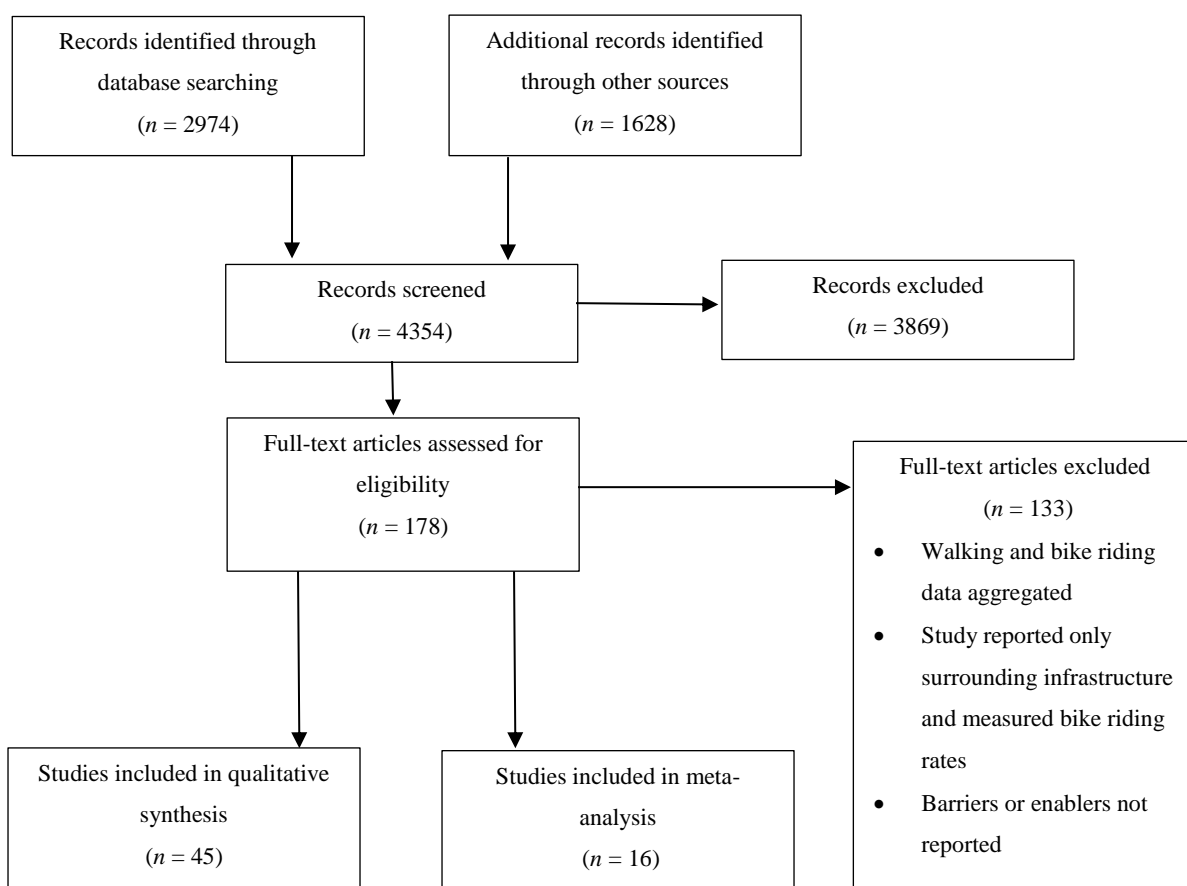
228

229

230

231

232



233

Figure 1. Summary of number of studied included in each screening process

234

235

236

237

238

239

240

241

242

243

244

The final 45 final studies were mostly quantitative and cross-sectional in design ( $n = 29$ ), followed by qualitative ( $n = 8$ ), mixed methods ( $n = 7$ ) and one longitudinal survey (see Table 1). Thirty-seven studies were identified from a bibliographic database search, seven from grey literature sources and one from an integrated database (TRID). Online surveys were the most common data collection method ( $n = 23$ ). The majority of studies reported on manual bikes ( $n = 43$ ), and two on electric pedal-assisted bikes (e-bikes). A range of methods were used to assess barriers and enablers and quantify their relative importance, including binary outcomes, Likert scales and other types of proportional data.

Table 1. Included study characteristics and cohort description

<b>First Author</b>	<b>Country Study Conducted In</b>	<b>Sample Size (n)</b>	<b>Population</b>	<b>Study Design</b>
Abasahl et al. (2018)	USA	698	University staff and students	Cross-sectional survey
Agarwal & North (2012)	USA	103	University students	Cross-sectional survey
Akar et al. (2013)	USA	2012	University staff and students	Cross-sectional survey
Chowdhury & Costello (2016)	New Zealand	1178	Representative sample of Auckland's population - cyclists and non-cyclists after the installation of new cycleways	Cross-sectional survey
Community Vibe on behalf of Central Goldfields Shire Council (2017)	Australia	100	Community members of a regional area in Victoria, Australia	Mixed-methods
Crawford et al. (2001)	Scotland	690	Two workplaces within Glasgow - one university and one hospital	Cross-sectional survey
Cred Consulting on behalf of City of Sydney and C40	Australia	89	Women who ride a bike for a substantial part of their transport and live in Sydney, Australia	Mixed-methods*
Curto et al. (2016)	Spain	814	Commuters living and working in Barcelona who are able to ride a bike for 20 minutes	Cross-sectional survey
Daley et al. (2007)	Australia	70	Men and women recruited through phoning a number on a flyer	Qualitative
de Cunha & da Silva (2018)	Portugal	505	Staff and PhD students at the Faculty of Engineering, University of Porto (Portugal)	Cross-sectional survey
de Geus et al. (2008)	Belgium	343	Working Flemish adults who lived within 10km of their workplace	Cross-sectional survey

Delso et al. (2018)	Spain	3786	Sample of 3786 adults who completed the Vitoria-Gasteiz household travel survey	Quantitative
Dill & McNeil (2016)	USA	3116	Sample of 3000 adults who lived in the 50 largest U.S. metropolitan areas	Quantitative
Fernández-Heredia et al. (2014)	Spain	3048	University staff and students	Cross-sectional survey
Galway et al. (2021)	Canada	30	Thirty adult cyclists living in North America	Qualitative
Heart Foundation on behalf of the Cycling Promotion Fund (2011)	Australia	515	Random sample of 1000 Australian adults	Cross-sectional survey
Heart Foundation on behalf of the Cycling Promotion Fund (2013)	Australia	1007	Adult women mostly residing in urban areas in Australia	Cross-sectional survey
Heesch et al. (2012)	Australia	1862	Members of a community bicycle organisation in Queensland	Cross-sectional survey
Heinen et al. (2011)	Netherlands	4299	Employees from several large companies in cities in the Netherlands	Cross-sectional survey
Ingunn Stangeby on behalf of Transportøkonomisk institutt (1997)	Norway	392	Mostly middle-aged people with a high level of education and high household income	Cross-sectional survey
Iwinska et al. (2018)	Poland	561	Random sample for quantitative survey was people at home in Warsaw during a door to door survey. The cyclist survey was of people who indicated they were cyclists in a previous travel survey, living in Warsaw. Qualitative methods were used for cyclists, transportation activists and a scientific expert on transportation systems in Warsaw.	Mixed-methods
Jones et al. (2016)	Netherlands & England	22	E-bike owners living in Randstaf or Groningen in the Netherlands and in Oxford in the UK	Qualitative
Lechaud (2016)	Portugal	305	Convenience sample of 701 people living in Portugal	Cross-sectional survey
Leger et al. (2019)	Canada	37	Older people living in retirement homes, in the community or in active lifestyle communities	Qualitative

Lois et al. (2016)	Spain	21	People who commute for work or study in two cities in Spain (Madrid or Vitoria-Gasteiz)	Qualitative
Manaugh et al. (2016)	Canada	4944**	Staff and students at the McGill University in Montreal	Cross-sectional survey
McManus et al. (2005)	Australia	1657	People who attended a bike to work breakfast event in the CBD of Perth, Western Australia	Cross-sectional survey
Mullan (2013)	Ireland	16	Leisure and sport cyclists living in Ireland who participated in a non-competitive cycling event (Sean Kelly tour)	Qualitative
Munoz et al. (2013)	Spain	224	People walking in the centre of Madrid who were local to the area	Cross-sectional survey
Nikitas (2018)	Greece	640	Sample of adults living in Drama, Greece	Cross-sectional survey
Rérat (2019)	Switzerland	13700	People who participated in the Bike to Work campaign in Switzerland	Mixed-methods
Sahlqvist & Heesch (2012)	Australia	183	Members of a community bicycle organisation in Queensland	Cross-sectional survey
Salvo et al. (2018)	Canada	14	People who have recently relocated to a different neighbourhood	Mixed-methods
Schneider & Hu (2015)	USA	3566	University of Wisconsin - Milwaukee staff and students who lived away from campus	Cross-sectional survey
Scott (2009)	Australia	300	Infrequent/non-cyclists living in New South Wales, Australia	Mixed-methods
Sears et al. (2012)	USA	185	Group of working adults in Vermont who commute by bicycle two or more miles each way on 28 specified days in a 10-month period	Longitudinal survey
Štastná et al. (2018)	Czech Republic	383	Students and staff of the Faculty of AgriSciences, Mendel University in Brno	Cross-sectional survey
Swiers et al. (2017)	England	194	University students living in England	Cross-sectional survey
Ton et al. (2019)	Netherlands	2425	Census data from the Netherlands Mobility Panel. Mostly representative of the Dutch population except for teenagers and low-income individuals	Cross-sectional survey
van Bekkum et al. (2011)	Scotland	831	Staff and PhD students in a cycle-friendly building in a university in Edinburgh	Cross-sectional survey
van Bekkum et al. (2011)	Scotland	15	Cycle commuters and potential cycle commuters from a "cycle-friendly" workplace in a Scottish city (Edinburgh)	Qualitative

Whannell et al. (2011)	Australia	270	First year undergraduate students studying a science, technology and society course focussed on environmental and sustainability issues	Cross-sectional survey
Winters et al. (2011)	Canada	1402	Current and potential cyclists in Vancouver from a random sample of home addresses	Cross-sectional survey
Winters et al. (2015)	Canada	Survey = 191 Interviews = 27	Older adults living in downtown Vancouver, Canada	Mixed-methods
Zander et al. (2013)	Australia	17	Adults living in inner west Sydney between 50 and 75 who were willing to cycle two hours per week or more for a 12-week period	Qualitative

\*quantitative outcome data extracted from cross-sectional survey only

\*\*barriers recorded for  $n = 295$

250 ***Quantitative measures***

251 There were 16 different outcome measures used across 36 quantitative studies of  
252 barriers and enablers. Of these, most studies ( $n = 17$ ) reported the proportion of people  
253 who noted that the factor was a barrier or enabler to them as a binary outcome of “yes”  
254 or “no”. Remaining quantitative studies used Likert scales ( $n = 9$ ) or other types of  
255 proportional measures. Likert scales had further variety, ranging from -1 to 1, to 1 to 7  
256 scales, measuring the importance of a barrier or enabler, level of agreement that it was a  
257 barrier or enabler, or how much the factor affected their propensity to ride a bike.  
258 Studies that used Likert scale measures reported the mean for the cohort. Other types of  
259 measures used included the proportion of people who “somewhat agreed” or “strongly  
260 agreed” that a particular factor was a barrier or enabler, the proportion of days not  
261 commuted by bike due to a particular barrier, the proportion of people who selected a  
262 particular factor as being the main barrier to them riding a bike, and the proportion that  
263 reported an enabling factor as the most important improvement for them to start using a  
264 bike.

265 ***Participants***

266 Included studies were conducted in Europe ( $n = 21$ , 48%), North America ( $n = 12$ ,  
267 27%), Australia ( $n = 11$ , 23%) and New Zealand ( $n = 1$ , <1%). Quantitative study  
268 sample sizes ranged from  $n = 89$  to  $n = 13,700$ , with a median (quartile 1, quartile 3) of  
269 665 (285, 1937) participants. Studies had varying proportions of women (range: 20-  
270 100%, median (quartile 1, quartile 3) = 50% (42%, 58%). Eleven of the 45 included  
271 studies focussed on university student and/or staff populations exclusively.



272 ***Barriers***

273 There were 34 barriers to cycling for transport identified through quantitative and  
274 qualitative methods (Table 2). The most commonly reported and measured barriers in  
275 both quantitative and qualitative studies were bad weather, the time taken to a  
276 destination being too great, a perceived lack of safety and high density of motor  
277 vehicles. Barriers reported in exclusively in qualitative data that were not measured in  
278 quantitative studies included a lack of connectivity of bike paths, negative non-rider  
279 attitudes toward cyclists, and negative perceptions of e-bikes from people riding pedal  
280 bikes. Barriers were categorised into eight themes; safety, trip factors, personal factors,  
281 infrastructure, access, environmental factors, end of trip facilities and perceptions.  
282 All barriers identified through data that could not be meta-analysed are shown in  
283 Supplementary materials B.

284

285

286 Table 2. Summary of barriers reported in quantitative and qualitative studies

<b>Barrier</b>	<b>Qualitative studies (n)</b>	<b>Quantitative studies (n)</b>	<b>Total (n)</b>
<i>Safety</i>			
Fear of motorist aggression	4	6	10
Perceived risk of injury	2	10	12
High traffic density	7	10	17
Feelings of safety	3	14	17
Fear of theft or crime	4	6	10
<i>Infrastructure</i>			
Poor quality and condition of dedicated bike lanes	5	6	11
Poor condition of roads	3	6	9
Limited dedicated bike lanes	5	8	13
Darkness	2	8	10
Lack of connectivity of bike paths	3	0	3
<i>Trip factors</i>			
Lack of storage on bike	3	8	11
Long distance	1	11	12
Time to destination too great	4	14	18
Children to transport	4	11	15
<i>Personal factors</i>			
Having to change or shower at destination	6	6	12
Too much effort	2	7	9
Lack of fitness	2	6	8
Not interested	0	6	6
Unable to ride a bike due to injury or disability	1	7	8
Lack of knowledge of bike riding road rules and bike maintenance	4	6	10
Do not own suitable clothing	0	4	4
Lack of comfort	1	3	4
<i>Access</i>			
No bike	0	8	8
Cost of bike too high	2	7	9
Mandatory helmet laws	1	1	2
<i>Environmental factors</i>			
Bad weather	3	22	25
Air-pollution exposure	2	8	10
Too many hills	1	8	9
<i>End of trip facilities</i>			

Lack of showers or lockers	0	13	13
Lack of bike parking	4	12	16
<i>Perceptions</i>			
Negative community perception of cyclists	5	0	5
Negative perception of e-bikes from pedal cyclists	2	0	2

287

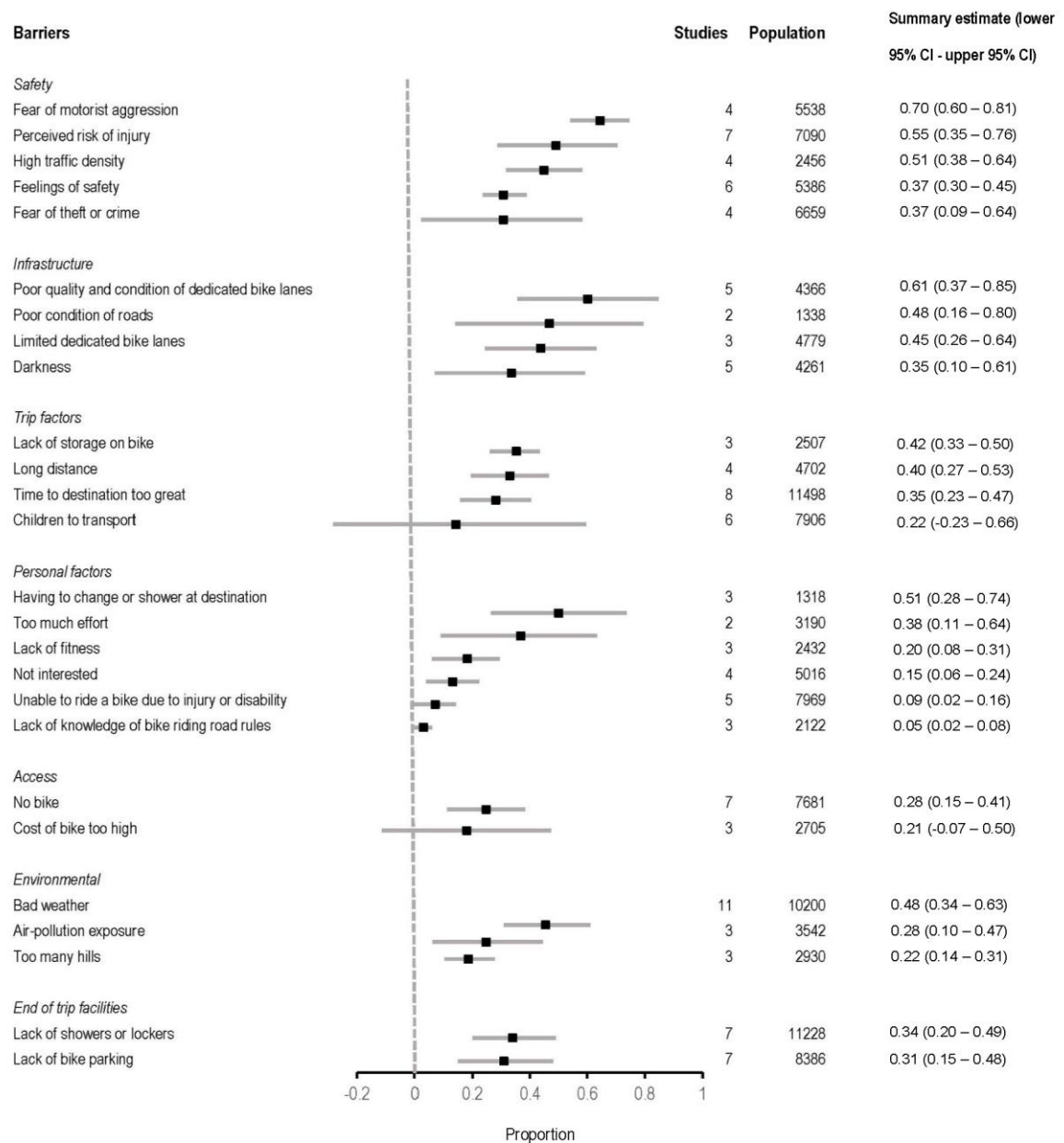
288

289           Twenty-six barriers met the inclusion criteria for meta-analyses. The summary

290 estimate and corresponding confidence intervals for each outcome are displayed in

291 Figure 2.

292



293

294 Figure 2. Forest plot of meta-analysis summary estimates (square) and confidence  
 295 intervals (grey error bars) of the proportion of people who reported each barrier to  
 296 cycling for transport

297

Table 3. Outcome table of safety, infrastructure and trip factor-related barriers

Author, Year	Safety					Infrastructure					Trip factors					
	Fear of motorist aggression	Perceived risk of injury	High traffic density	Feelings of safety	Fear of theft or crime	Poor quality and condition of dedicated bike lanes	Poor condition of roads	Limited dedicated bike lanes	Darkness	Lack of connectivity of bike paths	Lack of storage on bike	Long distance	Time to destination too great	Children to transport	Other activities before/after work	Need vehicle for work
Abasahl et al. (2018)	X	X	X		X	X	X		X		X		X			
Agarwal & North (2012)			X						X							
Akar et al. (2013)			X						X							
Chowdhury (2016)	X							X	X		X	X	X	X		
Community Vibe (2017)			X	X				X					X			
Crawford et al. (2001)			X				X					X	X	X		
Curto et al. (2016)				X						X				X		
Daley et al. (2007)	X					X	X	X		X						
de Geus et al. (2008)													X			
Delso et al. (2018)			X	X				X				X				
Dill & McNeil (2016)			X	X				X				X				X
Fernández-Heredia (2014)				X	X							X				
Heart Foundation (2011)		X	X				X	X				X	X	X		
Heart Foundation (2013)	X	X	X										X	X		
Heesch et al. (2012)	X		X									X	X			
Iwinska et al. (2018)		X				X		X								
Jones et al. (2016)				X		X								X		
Lechaud (2016)				X		X		X								
Leger et al. (2019)			X													
Lois et al. (2016)	X	X		X	X				X		X		X	X		
Manaugh et al. (2016)				X								X				
Mullan (2013)						X		X		X		X				
Nikitas (2018)				X		X										
Rérat (2019)		X	X		X	X		X	X		X		X	X	X	
Sahlqvist & Heesch (2012)	X		X									X				
Salvo et al. (2018)						X										

Schneider & Hu (2015)				X	X		X					X	X			
Scott (2009)	X	X	X	X	X		X	X		X			X	X		X
Sears et al. (2012)									X						X	
Štastná et al. (2018)		X			X											
Swiers et al. (2017)				X												
van Bekkum et al. (2011)				X			X		X			X	X			
van Bekkum et al. (2011)	X		X			X					X		X			
Whannell et al. (2011)				X					X			X				
Winters et al. (2011)	X	X	X				X		X							
Winters et al. (2015)			X		X			X								
Zander et al. (2013)			X													

250 *Safety*

251 Five barriers were reported across 31 studies that related to safety (see Table 3). These  
252 included perceived risk of injury, traffic density, feeling of safety, fear of motorist  
253 aggression and fear of crime. A fear of motorist aggression was reported by the largest  
254 summary estimate relative to other barriers that were meta-analysed (summary estimate  
255 = 70%; 95% CI: 60%; 80%). This result was supported by Likert scale data, where  
256 participants rated barriers relating to safety as important and qualitative data where  
257 participants commented on not feeling safe on a bike (see Supplementary Materials B).

258 "I mean the big resistance to cycling is...a lot of people just feel...don't feel safe  
259 cycling" (Jones et al., 2016)

260 Feeling unsafe was another barrier relating to safety measured in 16 studies  
261 (Table 3). When asked about feelings of safety, some participants believed this was  
262 regarding their safety on the road in relation to other road-users, or safety on the bike.  
263 Many reported feeling unsafe riding on the road due to the presence of motor vehicle  
264 traffic and the potential for injury.

265 "I don't feel safe at the moment, I know a few people, parents or whatever who  
266 have been hit by or killed by cars in bike accidents... you are not protected like  
267 you are in a car" (Jones et al., 2016)

268 Other participants reported feeling unsafe on a bike due to potential crime.

269 "It is dangerous to cycle in the city, except for certain areas" Male, non-cyclist  
270 (Scott, 2009)

271

272 "I work late and I don't feel safe. In a car you can lock the doors, but on a bike  
273 you just have to ride fast." (Scott, 2009)

274 *Infrastructure*

275 A lack of dedicated bike infrastructure had a higher summary estimate relative to other  
276 barriers (summary estimate = 45%; 95% CI: 26%; 64%). This was supported by  
277 participant reports across five qualitative studies (M. Daley et al., 2007; Jones et al.,  
278 2016; Mullan, 2013; Rérat, 2019; Salvo et al., 2018), and quantitative studies reporting  
279 proportional data not included in the meta-analyses (Jennifer Dill & McNeil, 2016;  
280 Léchaud, 2016).

281

282 Ten studies reported specifically on the poor condition of existing bike  
283 infrastructure as a barrier (Table 3), with a high summary estimate relative to all meta-  
284 analyses conducted (summary estimate = 61%; 95% CI: 37%; 85%). This was further  
285 expanded in qualitative studies, where participants had varied concerns regarding the  
286 condition of infrastructure, including; paths not being wide enough to accommodate  
287 bikes (M. Daley et al., 2007), bike lanes being adjacent to parked cars where they were  
288 at risk of being hit by a door (Winters et al., 2015), lanes being blocked by parked cars  
289 (M. Daley et al., 2007), and poor physical condition of bike infrastructure, including  
290 from potholes, gravel and litter (Galway et al., 2021; Jones et al., 2016; Rérat, 2019).

291 While not measured in quantitative studies, a lack of connectivity of existing bike  
292 infrastructure was reported across four qualitative studies (M. Daley et al., 2007; Linden  
293 et al., 2020; Mullan, 2013; Scott, 2009).

294 "You are going along the road and all of a sudden there's a pedestrian crossing or  
295 something like that, and the cycle lanes just ends, and then you have to work your  
296 way back out into traffic." (Mullan, 2013)



297 *Trip factors*

298 A lack of storage on a bike had the highest summary estimate compared to other trip  
299 factors reported (summary estimate = 42%; 95% CI: 33%; 50%). Findings varied  
300 greatly across meta-analysis results, Likert scale and qualitative data for other barriers  
301 relating to trip factors. Of the five studies that used Likert scales to measure agreement  
302 or importance of distance as a barrier, participants in three studies (Crawford et al.,  
303 2001; Delso et al., 2018; Fernández-Heredia et al., 2014) reported that this was  
304 important or stopped them from cycling, while two studies (Manaugh et al., 2017;  
305 Jennifer E. van Bekkum et al., 2011) reported that it was not important or disagreed.

306

307 Results varied between studies reporting having children or other people to  
308 transport as a barrier (Table 3). Of the two studies that used Likert scales, one reported  
309 having people to transport as an important barrier (Crawford et al., 2001), while another  
310 found it not discouraging (Jennifer E. van Bekkum et al., 2011). Participants in some  
311 qualitative studies felt infrastructure was not available for them to safely transport their  
312 children by bike.

313 "I would not ride a bike with a small kid in a trailer or child seat on the main  
314 roads...It is too dangerous in my mind, even though I always ride on main roads  
315 when I am alone" (Rérat, 2019)

316

Table 4. Outcome table of personal, access, environmental, end of trip facility and perception-related barriers

Author, Year	Personal								Access			Environmental			End of trip facilities		Perceptions	
	Having to change or shower at destination	Too much effort	Lack of fitness	Not interested	Unable to ride a bike due to injury or disability	Lack of knowledge of bike riding road rules and bike maintenance	Do not own suitable clothing	Lack of comfort	No bike	Cost of bike too high	Mandatory helmet laws	Bad weather	Air-pollution exposure	Too many hills	Lack of showers or lockers	Lack of bike parking	Negative community perception of cyclists	Negative perception of e-bikes from pedal cyclists
Abasahl et al. (2018)			X			X		X				X	X		X			
Agarwal & North (2012)												X						
Akar et al. (2013)												X						
Chowdhury & Costello (2016)					X	X		X				X		X				
Community Vibe (2017)												X						
Crawford et al. (2001)	X		X						X			X	X	X	X			
Curto et al. (2016)								X				X			X		X	
Daley et al. (2007)			X			X											X	
de Geus et al. (2008)				X														
Delso et al. (2018)			X			X	X				X			X				
Dill & McNeil (2016)								X				X						
Fernández-Heredia et al. (2014)			X					X				X		X	X			
Heart Foundation (2011)			X		X	X	X	X				X		X	X	X		
Heart Foundation (2013)												X	X		X			
Heesch et al. (2012)			X			X			X				X	X	X	X		
Iwinska et al. (2018)	X								X			X			X		X	
Jones et al. (2016)																X		X
Lechaud (2016)								X				X		X				
Leger et al. (2019)					X													X
Lois et al. (2016)	X											X		X		X	X	
Manaugh et al. (2016)		X						X	X					X	X			
Mullan (2013)	X																X	

Nikitas (2018)		X			X				X									
Rérat (2019)	X	X	X				X	X				X	X			X		
Sahlqvist & Heesch (2012)																X		
Schneider & Hu (2015)					X	X			X			X			X	X		
Scott (2009)	X	X		X	X	X	X			X	X	X	X		X	X	X	
Sears et al. (2012)	X	X										X						
Štastná et al. (2018)	X	X										X			X			
Swiers et al. (2017)	X									X		X			X			
van Bekkum et al. (2011)		X			X					X		X	X	X	X	X		
van Bekkum et al. (2011)	X	X																
Whannell et al. (2011)									X			X						
Winters et al. (2011)												X						
Winters et al. (2015)						X												
Zander et al. (2013)						X												

319

320 *Personal Factors*

321 Ten personal barriers were reported across 25 studies (Table 4). Having to  
322 change or shower at a destination had the largest summary estimate relative to other  
323 personal factors meta-analyses (summary estimate = 51%; 95% CI: 28%; 74%). This  
324 was supported by findings from four qualitative studies (David Lois et al., 2016;  
325 Mullan, 2013; Scott, 2009; J. E. van Bekkum et al., 2011), however accounted for only  
326 0.7% of days not biked for this reason in a longitudinal study of barriers to cycle-  
327 commuting (Sears et al., 2012).

328 "I would have to be in my gear - my cycle pants - and you know, I would have to  
329 have [a shower], my hair would be stuck to my head. In my line of work, it's all  
330 about being professional...how you appear, like. If I got caught in the rain it would  
331 take from my confidence and take from my work" (Mullan, 2013)

332 Owning clothes that are suitable to ride a bike in was reported by five cross-  
333 sectional studies, with differing findings (Table 4). Proportions of participants who  
334 either slightly or strongly agreed that this was a barrier ranged from 19-24% (Léchaud,  
335 2016; Rérat, 2019). Between 5 and 7.6% of participants in two quantitative cross-  
336 sectional studies reported not owning suitable clothes as their main barrier to cycling  
337 (Heart Foundation, 2013; Scott, 2009). However, on a Likert scale, a survey of women  
338 at a university in Edinburgh reported this as not a discouraging factor (Jennifer E. van  
339 Bekkum et al., 2011).

340 *Access*

341 Access-related barriers were reported in 15 studies. The summary estimate for not  
342 owning a bike being a barrier was lower relative to other meta-analyses (Figure 2). The  
343 cost of a bike was reported in eight studies (Table 4), where of three using Likert scales,

344 two reported cost as not being a discouraging factor (Manaugh et al., 2017; Jennifer E.  
345 van Bekkum et al., 2011) while one reported this as an important barrier (Crawford et  
346 al., 2001).

347 "My biggest barrier is the cost of a bike" (Swiers et al., 2017)

#### 348 *Environmental factors*

349 Environmental barriers were reported in 30 studies. Bad weather was identified as a  
350 barrier in in 22 papers (Table 4), with the largest summary estimate for environmental  
351 barriers (summary estimate = 48%; 95% CI: 34%; 63%). Consistent with these findings,  
352 participants in studies using Likert scales commonly reported bad weather as an  
353 important barrier (Crawford et al., 2001; Fernández-Heredia et al., 2014; Jennifer E. van  
354 Bekkum et al., 2011; Winters et al., 2011). Some participants in qualitative studies  
355 reported that bad weather could put them at risk of injury.

356

357 "It's not getting wet, but the fact that [in the rain] I can't see well, and especially at  
358 night, I think car drivers will have trouble seeing me and braking and reacting"  
359 (David Lois et al., 2016)

360

#### 361 *End of Trip Facilities*

362 A lack good quality bike parking, had a lower summary estimate relative to other meta-  
363 analyses (summary estimate = 31%; 95% CI: 15%; 48%). Across four qualitative  
364 studies, and two Likert scale studies (Fernández-Heredia et al., 2014; Manaugh et al.,  
365 2017) participants reported this as a barrier (Jones et al., 2016; D. Lois et al., 2016;  
366 Rérat, 2019; Scott, 2009). One study that reported Likert scales and sampled only  
367 women reported this as not a discouraging factor for riding a bike (Jennifer E. van  
368 Bekkum et al., 2011).

369

370 *Attitudes*

371 All attitudinal barriers were identified through qualitative data only. Participants  
372 reported the negative community perceptions of cyclists in five studies (Table 4).  
373 Reasons behind these perceptions differed, including the perception of status when  
374 riding a bike, and the perception of cyclists on roads. Some participants reported that  
375 when they cycled on the road, they felt that they were treated as a “second-class citizen”  
376 (M. Daley et al., 2007). Others reported that if someone were riding a bike, this may  
377 lead them to thinking the person does not have a car. They reported having a car as  
378 being a mark of socioeconomic status.

379 "There is that attitude that you only cycle because you can't afford a car" (Male,  
380 cyclist) (Mullan, 2013)

381 Negative perceptions of e-bikes from pedal cyclists were reported in two qualitative  
382 studies (Jones et al., 2016; S. J. Leger et al., 2019). Participants reported riding an e-  
383 bike as being perceived as “cheating” by people who ride unpowered pedal bikes.

384 "I guess the initial reaction is that it's cheating, partly because I'm part of the  
385 cycling group/culture and [they] think it's cheating" (Jones et al., 2016)

386 *Enablers*

387 There were 22 enablers to cycling for transport identified (Table 5). Enablers were  
388 categorised as either relating to infrastructure, resources and end of trip facilities,  
389 personal improvement and enjoyment, motivations and practicality. Riding a bike being  
390 a fun enjoyable activity was reported by the highest number of studies ( $n = 17$ ),  
391 followed by riding a bike being an environmental choice ( $n = 15$ ) and an efficient mode  
392 of transport ( $n = 17$ ). All recorded qualitative and quantitative data that were not able to

393 be included in meta-analyses are shown in Supplementary Materials or available on

394 request.

395

396

397 Table 5. Summary of content analysis in quantitative and qualitative studies and  
 398 reported enablers

<b>Enablers</b>	<b>Qualitative studies (n)</b>	<b>Quantitative studies (n)</b>	<b>Total (n)</b>
<i>Infrastructure</i>			
Protected bike lanes	2	5	7
Any bike lanes	2	6	8
Lighting	0	3	3
Signage to show bike routes	0	2	2
Quiet roads	3	1	4
<i>Resources and end of trip facilities</i>			
Secure bike storage or parking	1	7	8
Change rooms & showers available	0	4	4
Taking bike on public transport	0	1	1
No helmet requirements	0	1	1
Bike route-specific maps	1	1	2
<i>Personal improvement and enjoyment</i>			
Fun and enjoyable activity	8	9	17
Improves health and fitness	4	12	16
Stress relief	3	5	8
Ability to explore	2	4	5
Improves personal image	0	5	5
<i>Motivations</i>			
Environmental benefits	4	14	18
Seeing other people riding bikes	4	4	8
Role model	4	0	4
<i>Practicalities</i>			
Economical transport	3	10	13
Flexible	2	7	9
Efficient	7	10	17

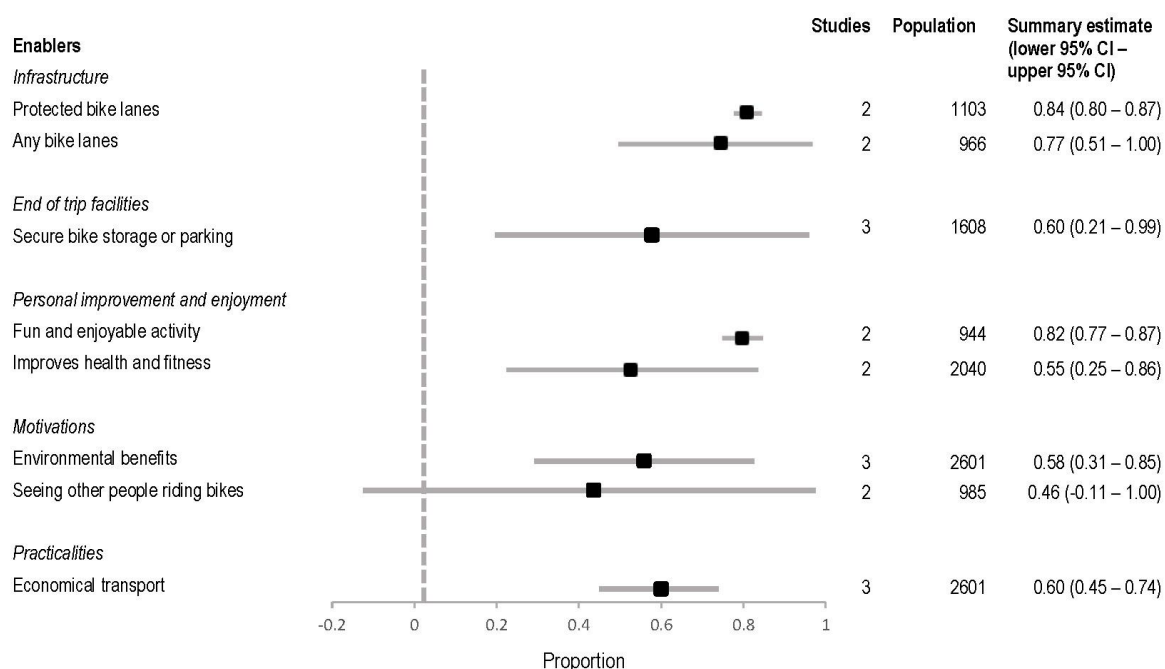
399

400

401 Eight meta-analyses were possible where two or more studies reported

402 unweighted proportional data on the same outcome (Figure 3).





403

404 Figure 3. Forest plot of meta-analysis summary estimates (square) and confidence  
 405 intervals (error bar) of the proportion of people who reported each enabler to cycling for  
 406 transport

407 *Infrastructure*

408 The provision of protected bike lanes (bike lanes physically separated from traffic) had  
 409 the highest summary estimate relative to other meta-analyses of enablers (summary  
 410 estimate = 84%; 95% CI: 80%; 87%). This was further rated as important in two Likert  
 411 scale studies (Crawford et al., 2001; Winters et al., 2011). Adequate lighting, signage  
 412 specific to people riding bikes, or having a mostly flat route were also rated as  
 413 important enablers (Crawford et al., 2001; Heart Foundation, 2013; Stangeby, 1997;  
 414 The Heart Foundation, 2011; Winters et al., 2011).

415 *Resources and end of trip facilities*

416 Having access to changing rooms and showers was measured as an enabler in three  
 417 quantitative studies that were not included in meta-analyses (Crawford et al., 2001;

418 Heart Foundation, 2013; Whannell et al., 2012), where in one survey of women, 4.9%  
419 reported this as the main reason that would enable them to ride a bike (Heart  
420 Foundation, 2013).

#### 421 *Personal improvement and enjoyment*

422 Factors related to personal improvement and enjoyment from bike riding were widely  
423 reported in qualitative data. A high summary estimate was reported for riding a bike  
424 being a fun and enjoyable activity (summary estimate = 55%; 95% CI: 25%; 86%),  
425 further supported by participants across eight studies (Table 6) that commented on the  
426 enjoyment of riding a bike.

427 "I always feel happy [when e-biking]. I liked it so much better than sitting in a car."  
428 (Jones et al., 2016)

429 Some studies reported bike riding as a stress release, or to help a person's mental  
430 health, as an enabling factor. In a survey conducted in the centre of Madrid (Muñoz et  
431 al., 2013) participants reported a mean of 7.04 on a scale of 1 (strongly disagree) to 10  
432 (strongly agree), for stress release being an enabling factor for bike riding. Participants  
433 recalled bike riding as "*my little bit of time alone*" (M. Daley et al., 2007).

#### 434 *Motivations*

435 Bike riding as a more sustainable and environmentally friendly option to travel was  
436 reported as less of an enabling factor compared to summary estimates of other enablers  
437 (summary estimate = 58%; 95% CI: 31%; 85%). However, this was rated as an  
438 important enabling factor across all studies that measured this with a Likert scale  
439 (Crawford et al., 2001; De Geus et al., 2008; Fernández-Heredia et al., 2014; Heinen et  
440 al., 2011; Muñoz et al., 2013), and one study of women who ride a bike as their primary  
441 mode of transport (Cred Consulting, 2020). Participants in four qualitative studies

442 (Galway et al., 2021; Samantha J Leger et al., 2019; D. Lois et al., 2016; J. E. van  
443 Bekkum et al., 2011) reported riding a bike because it is "*better for the planet*" (Galway  
444 et al., 2021).

445

446 An enabling factor reported in four qualitative studies (Rérat, 2019; Salvo et al.,  
447 2018; Scott, 2009; J. E. van Bekkum et al., 2011), and not measured in quantitative  
448 studies, was being a role model by riding a bike for transport. Participants in several  
449 studies commented on riding a bike in hope that their children would do the same in the  
450 future.

451 "I'd like my son to see that cycling was a viable choice of transport. He's too ready  
452 to jump into the car at every opportunity." (J. E. van Bekkum et al., 2011)

453 Potentially related to this enabling factor was the improvement of personal  
454 image from riding a bike. This was recorded in five quantitative studies (De Geus et al.,  
455 2008; Heinen et al., 2011; Muñoz et al., 2013; Ton et al., 2019), with conflicting  
456 findings on the degree of importance.

#### 457 *Practicality*

458 Riding a bike being a more economically viable transport option had a high summary  
459 estimate relative to other meta-analyses of enablers (summary estimate = 60%; 95% CI:  
460 45%; 74%). Participants in four Likert scale studies rated this as an important enabling  
461 factor (Crawford et al., 2001; Fernández-Heredia et al., 2014; Heinen et al., 2011;  
462 Muñoz et al., 2013), while participants in three qualitative studies (D. Lois et al., 2016;  
463 Scott, 2009; J. E. van Bekkum et al., 2011) reported that bike riding was a one-time cost  
464 rather than ongoing costs, such as with a motor vehicle or public transport.

## 465 **Discussion**

466 This systematic review and meta-analysis identified a range of barriers and enablers to  
467 cycling for transport from 45 studies. Meta-analyses facilitated comparison between  
468 barriers and enablers, and the inclusion of qualitative data highlighted potentially under-  
469 researched factors and provided a consumer perspective. In total, 34 barriers and 21  
470 enablers were identified. Meta-analyses were possible for 34 of the identified barriers  
471 and enablers. Barriers reported by the largest proportions of participants in meta-  
472 analyses were related to safety and infrastructure. Furthermore, the enablers reported by  
473 the highest proportion of participants were also regarding provision of infrastructure.  
474 Barriers identified through qualitative data included a negative perception of bike riders,  
475 a negative perception of e-bikes, and a lack of connectivity between existing  
476 infrastructure. Qualitative methods identified enablers that were not measured in other  
477 quantitative studies, including bike riding permitting exploration of local areas, and  
478 riding a bike to act as a role model for children.

479

480 Barriers and enablers relating to safety and infrastructure were rated as most important,  
481 and reported by the largest number of people in this review. It is likely that barriers  
482 regarding a perceived lack of safety relate to the reported lack of infrastructure that  
483 supports safe and low-stress bike riding (Branion-Calles et al., 2019). A perceived risk  
484 of injury, fear of harassment or aggression from motor vehicle drivers, and fear of  
485 riding a bike on the road with cars, were widely reported as barriers to riding a bike. A  
486 lack of high-quality infrastructure minimising interactions between bikes and motor  
487 vehicles, such as protected bike lanes, were also commonly reported. There is potential  
488 for these barriers, which are largely safety and infrastructure-related, to be overcome by  
489 interventions that minimise interactions between bike riders and motor vehicle traffic.

490 The provision of high-quality protected infrastructure remains the gold-standard for  
491 increasing participation in bike riding (Hull & O’Holleran, 2014; Stewart et al., 2015).  
492 However, there is difficulty in providing protected infrastructure across entire cities and  
493 regions. Further interventions to minimise potentially unsafe interactions between bike  
494 riders and motor vehicles could enable connections between protected infrastructure.  
495 This may include areas of lower motor vehicle speeds (such as 30km/h urban speed  
496 limits) or traffic calming infrastructure (Yang et al., 2010). Despite the need for  
497 protected infrastructure, on-road bike lanes remain a prominent form of bike  
498 infrastructure in urban design (Beck, 2021). As supported by our findings where “any  
499 bike lane” had a lower summary estimate than specifically protected bike lanes, this  
500 type of infrastructure does little to enhance participation in bike riding (Akar & Clifton,  
501 2009; Michelle Daley & Rissel, 2011; J. Dill, 2009; Kristiann C Heesch et al., 2012;  
502 Twaddle et al., 2010), and places a person at a substantially higher risk of injury  
503 compared to riding a bike in a protected bike lane (Haileyesus et al., 2007; Lusk et al.,  
504 2011; Mehan et al., 2009).

505

506 A lack of storage on a bike was widely reported as a barrier to riding a bike for  
507 transport. This included storage to carry children and objects required for work. This  
508 suggests there is a greater need for availability of bikes with enhanced storage capacity,  
509 and for environments supportive of such bikes. One way to account for this need could  
510 be an increase in the accessibility of ‘cargo bikes’. Cargo bikes have substantial  
511 carrying capacity permitting the movement of children and belongings, however there  
512 are issues in uptake due to current infrastructure often being too narrow to comfortably  
513 ride and manoeuvre in (Liu et al., 2020). Many urban environments are designed with  
514 the premise of being used solely by upright two-wheeled bikes (Napper, 2020). Newly

515 established infrastructure dedicated to bikes may benefit from input from cargo-bike  
516 riders to ensure lanes are designed to enhance the capacity for bikes with storage  
517 capabilities to ride on them.

518  
519       When designing inclusive infrastructure, it is also important to incorporate the  
520 needs of people riding bikes with children (Aldred et al., 2017; Clayton & Musselwhite,  
521 2013). It was evident through qualitative data that some adults would ride a bike for  
522 transport if they were able to with their children. However, they reported not feeling  
523 safe to do so with existing infrastructure. Other research indicates that parents often  
524 avoid riding a bike for travel as sections of their bike network are perceived as unsafe  
525 for children, such as sections with on-road lanes (McLaren, 2016). While the barriers to  
526 children riding a bike to commute to school have been thoroughly researched, there is  
527 limited data on the barriers to adults riding alongside children for other trips. As many  
528 trips with children are often within local areas (Yeung et al., 2008), there is potential for  
529 modal shifts to bike riding if the needs of this group are understood and met.

530  
531       A range of measures were used in studies included in this review to identify  
532 barriers or enablers, or quantify the importance of these barriers and enablers. Because  
533 of this, many study findings were unable to be robustly compared or synthesised,  
534 limiting discussion of differences in barriers and enablers between countries, samples  
535 and study types. Measures included in meta-analyses used binary outcomes which were  
536 useful for showing the size of the effect of a particular barrier or enabler. However, this  
537 does not consider the relative strength that a barrier or enabler may have in influencing  
538 an individual's bike riding behaviours. Other studies used Likert scales, permitting the  
539 participant to choose if a factor was very much, or less so of a barrier or enabler to their

540 riding a bike. This approach highlights potentially influential factors, allowing for a  
541 more focused approach. A downside of using Likert scales in this context is that studies  
542 exploring barriers and enablers to bike riding often have a large list of factors for  
543 inclusion. Where each factor requires a Likert scale answer, this can contribute to  
544 respondent fatigue, threatening data validity (Cox III, 1980; Dolnicar et al., 2011). To  
545 allow for comparisons between, and synthesis of, study findings in future, an approach  
546 that utilises the benefits of both binary and Likert scale measures is necessary. A two-  
547 step logic where participants first select all factors that are a barrier or enabler to them  
548 riding a bike, followed by a Likert scale question displaying only those factors chosen  
549 by the participant could be beneficial. This approach would identify both the proportion  
550 of people affected by particular barriers and enablers, and how much they do so.

551

552         It was evident through qualitative findings that there were varying  
553 interpretations of questions regarding feelings of safety while riding a bike. Some  
554 people perceived questions around feelings of safety to mean feeling unsafe riding a  
555 bike, while others perceived this as not feeling a sense of personal safety in, for  
556 example, a particular area. The separation of safety due to traffic and road safety  
557 compared to safety due to crime, theft or other environmental factors in future research  
558 is imperative for the validity and reliability of data (Forman et al., 2008). Pikora et al.  
559 (2002) previously outlined potential questions and keywords to specify and reliably  
560 measure safety in bike riding research, however this could benefit from updated review  
561 (Pikora et al., 2002).

562

563         Some enablers reported in this review were identified exclusively through  
564 qualitative data. These included riding a bike for transport as a role model for children,

565 in a hope that they will see it as a viable choice of transport. This enabling factor is also  
566 present in qualitative research of the enablers of physical activity (Caperchione et al.,  
567 2012; Stronach et al., 2016). As it is well established that parents participating in  
568 physical activity will have a positive influence on children's perception and  
569 participation in physical activity (Cheung & Chow, 2010; Welk et al., 2003), and there  
570 is evidence that this may be an enabling factor for adults, further quantitative  
571 measurement and exploration may be beneficial. An understanding of enabling factors  
572 such as this have the potential to inform meaningful promotional campaigns and values-  
573 based messaging around bike riding.

574

575         Reviews in bike riding and active transport research are often limited to  
576 published research, excluding potentially relevant grey literature conducted as part of  
577 government or bicycle organisation research. This review included a systematic grey  
578 literature search to incorporate this, while maintaining rigour by using study-specific  
579 quality assessment tools. While consideration was taken to carefully interpret data from  
580 grey literature sources, as they were not peer-reviewed, these sources may be subject to  
581 selection and publication bias.

582

583         A further limitation extends from the synthesis of data across a diversity of  
584 populations and locations. Locations had varying geographical areas, trip distances and  
585 infrastructure. Populations varied, including groups of university students, and studies  
586 of solely women. These variations and the substantial heterogeneity between samples  
587 prevented robust comparisons being made between study designs, countries and  
588 populations. Despite these variations and their likely influence on results, certain  
589 summary estimates had smaller confidence intervals relative to others. This



590 demonstrates the consistency of reporting these barriers and enablers across diverse  
591 geographical areas and population groups. In addition, not all barriers and enablers were  
592 able to be meta-analysed due to the heterogeneity of outcome measures used.

593

594 This review only included studies conducted in OECD countries and published  
595 in the English language. Findings are likely not reflective of the barriers and enablers  
596 present for people in lower to middle income economies (Bank, 2019), who encounter  
597 vastly different road and infrastructure conditions (Forjuoh, 2003). Further review is  
598 required to understand the unique barriers and enablers faced by these areas.

599

600 There are other methods used to capture barriers and enablers to cycling than  
601 what has been included in this review. Stated preference surveys have been used and  
602 reviewed previously, however the majority report on focused categories of barriers  
603 and/or enablers, such as infrastructure types (Aldred et al., 2017) or bike parking  
604 (Heinen & Buehler, 2019). This review focused on self-reported barriers and enablers  
605 from survey and qualitative data, which enabled the capture of the diversity and breadth  
606 of barriers and enablers people experience for riding a bike, as well as comparisons in  
607 frequency and distribution between categories.

## 608 **Conclusion**

609 Understanding the barriers and enablers to cycling for transport is integral to designing  
610 environments supportive of current and potential bike riders, for promotional campaigns  
611 to encourage participation in bike riding and to influence the development of supportive  
612 policy. This systematic review identified a diverse range of barriers and enablers using  
613 quantitative and qualitative data, highlighting the importance of safety and  
614 infrastructure, and potential flaws in survey reliability. Further research should include

615 measures to show the strength of particular barriers and enablers. It is recommended  
616 that future research of barriers to bike riding clearly specifies the meaning of “safety”.

## References

- Abasahl, F., Kelarestaghi, K. B., & Ermagun, A. (2018). Gender gap generators for bicycle mode choice in Baltimore college campuses [Empirical Study; Mathematical Model; Quantitative Study]. *Travel Behaviour and Society*, 11, 78-85. <https://doi.org/http://dx.doi.org/10.1016/j.tbs.2018.01.002>
- Agarwal, A., & Gupta, V. (2021). Economic impact of cycling across various nations [Article]. *International Journal of Economics and Business Research*, 21(2), 156-179. <https://doi.org/10.1504/IJEER.2021.113145>
- Agarwal, A., & North, A. (2012). Encouraging Bicycling among university students: Lessons from Queen's university, Kingston, Ontario [Article]. *Canadian journal of urban research*, 21(1), 151-168. <https://www.scopus.com/inward/record.uri?eid=2-s2.0-84874454836&partnerID=40&md5=4111f4fcbbaf02f1b63a1bcc60b53013>
- Akar, G., & Clifton, K. J. (2009). Influence of individual perceptions and bicycle infrastructure on decision to bike. *Transportation Research Record* (pp. 165-172).
- Akar, G., Fischer, N., & Namgung, M. (2013). Bicycling Choice and Gender Case Study: The Ohio State University [Article]. *International Journal of Sustainable Transportation*, 7(5), 347-365. <https://doi.org/10.1080/15568318.2012.673694>
- Aldred, R., Elliott, B., Woodcock, J., & Goodman, A. (2017). Cycling provision separated from motor traffic: a systematic review exploring whether stated preferences vary by gender and age. *Transport Reviews*, 37(1), 29-55.
- Bank, T. W. (2019). *Low & middle income* <https://data.worldbank.org/country/XO>
- Beck, B., Winters, M., Thompson, J., Stevenson, M., & Pettit, C. . (2021). Spatial variation in bicycling: a retrospective review of travel survey data from Greater Melbourne, Australia. . *SocArXiv Papers*. [osf.io/preprints/socarxiv/78qgf](https://osf.io/preprints/socarxiv/78qgf)
- Branion-Calles, M., Nelson, T., Fuller, D., Gauvin, L., & Winters, M. (2019). Associations between individual characteristics, availability of bicycle infrastructure, and city-wide safety perceptions of bicycling: A cross-sectional survey of bicyclists in 6 Canadian and US cities. *Transportation Research Part A: Policy and Practice*, 123, 229-239.
- Buehler, R., & Pucher, J. (2017). Trends in walking and cycling safety: recent evidence from high-income countries, with a focus on the United States and Germany. *American Journal of Public Health*, 107(2), 281-287.
- Canser, B., Haydar, S., & Söyük, S. (2016). The similarities and differences analysis of OECD countries in terms of health system indicators. *Acıbadem Üniversitesi Sağlık Bilimleri Dergisi*(3), 154-164.
- Caperchione, C. M., Vandelanotte, C., Kolt, G. S., Duncan, M., Ellison, M., George, E., & Mummery, W. K. (2012). What a man wants: understanding the challenges and motivations to physical activity participation and healthy eating in middle-aged Australian men. *American journal of men's health*, 6(6), 453-461.
- Celis-Morales, C. A., Lyall, D. M., Welsh, P., Anderson, J., Stell, L., Guo, Y., Maldonado, R., Mackay, D. F., Pell, J. P., & Sattar, N. (2017). Association between active commuting and incident cardiovascular disease, cancer, and

- mortality: prospective cohort study. *bmj*, 357, j1456.  
<https://www.bmj.com/content/357/bmj.j1456>
- Central Goldfields Shire Council. (2017). *Central Goldfields Shire Walking and Cycling Strategy* (  
<https://www.centralgoldfields.vic.gov.au/files/sharedassets/public/community-services/recreation/cgswalkingcyclingstrategy20apr17.pdf>).
- Cheung, P. P., & Chow, B. C. (2010). Parental mediatory role in children's physical activity participation. *Health Education*.
- Chowdhury, S., & Costello, S. B. (2016). An examination of cyclists' and non-cyclists' mode choice under a new cycle network [Conference Paper]. *Road and Transport Research*, 25(4), 50-61.  
<https://www.scopus.com/inward/record.uri?eid=2-s2.0-85019659368&partnerID=40&md5=571a88b852b02bc105e08c082b624f3c>
- Cred Consulting & City of Sydney (2020). *On the go: how women travel around our city: a case study on active transport across Sydney through a gender lens* ([https://www.cityofsydney.nsw.gov.au/\\_data/assets/pdf\\_file/0016/321154/On-the-Go-How-women-get-around-our-city.pdf](https://www.cityofsydney.nsw.gov.au/_data/assets/pdf_file/0016/321154/On-the-Go-How-women-get-around-our-city.pdf))
- Clayton, W., & Musselwhite, C. (2013). Exploring changes to cycle infrastructure to improve the experience of cycling for families [Article]. *Journal of Transport Geography*, 33, 54-61. <https://doi.org/10.1016/j.jtrangeo.2013.09.003>
- Covidence. (2020). *Better systematic review management* <https://www.covidence.org/>
- Cox III, E. P. (1980). The optimal number of response alternatives for a scale: A review. *Journal of Marketing Research*, 17(4), 407-422.
- Crawford, F., Mutrie, N., & Hanlon, P. (2001). Employee attitudes towards active commuting. *International Journal of Health Promotion and Education*, 39(1), 14-20.
- Curto, A., De Nazelle, A., Donaire-Gonzalez, D., Cole-Hunter, T., Garcia-Aymerich, J., Martínez, D., Anaya, E., Rodríguez, D., Jerrett, M., & Nieuwenhuijsen, M. J. (2016). Private and public modes of bicycle commuting: A perspective on attitude and perception [Article]. *European Journal of Public Health*, 26(4), 717-723. <https://doi.org/10.1093/eurpub/ckv235>
- Daley, M., & Rissel, C. (2011). Perspectives and images of cycling as a barrier or facilitator of cycling. *Transport Policy*, 18(1), 211-216.
- Daley, M., Rissel, C., & Lloyd, B. (2007). All dressed up and nowhere to go? A qualitative research study of the barriers and enablers to cycling in inner Sydney [Article]. *Road & Transport Research*, 16(4), 42-52.
- De Geus, B., De Bourdeaudhuij, I., Jannes, C., & Meeusen, R. (2008). Psychosocial and environmental factors associated with cycling for transport among a working population [Article]. *Health Education Research*, 23(4), 697-708.  
<https://doi.org/10.1093/her/cym055>
- Delso, J., Martín, B., & Ortega, E. (2018). Potentially replaceable car trips: Assessment of potential modal change towards active transport modes in Vitoria-Gasteiz [Article]. *Sustainability (Switzerland)*, 10(10), Article 3510.  
<https://doi.org/10.3390/su10103510>
- Department of Transport, U. (2021). *National Travel Survey: 2020*  
<https://www.gov.uk/government/statistics/national-travel-survey-2020/national-travel-survey-2020#trends-in-car-trips>
- Dill, J. (2009). Bicycling for transportation and health: the role of infrastructure. *Journal of Public Health Policy*, 30 Suppl 1, S95-110.  
<https://doi.org/https://dx.doi.org/10.1057/jphp.2008.56>

- Dill, J., & McNeil, N. (2016). Revisiting the four types of cyclists: findings from a national survey. *Transportation Research Record*, 2587(1), 90-99.
- Dolnicar, S., Grün, B., & Leisch, F. (2011). Quick, simple and reliable: Forced binary survey questions. *International journal of market research*, 53(2), 231-252.
- Fernández-Heredia, T., Monzón, A., & Jara-Díaz, S. (2014). Understanding cyclists' perceptions, keys for a successful bicycle promotion [Article]. *Transportation Research Part A: Policy and Practice*, 63, 1-11.  
<https://doi.org/10.1016/j.tra.2014.02.013>
- Fishman, E., & Cherry, C. (2016). E-bikes in the mainstream: reviewing a decade of research. *Transport Reviews*, 36(1), 72-91.
- Fishman, E., Washington, S., & Haworth, N. (2012). Barriers and facilitators to public bicycle scheme use: A qualitative approach. *Transportation research part F: traffic psychology and behaviour*, 15(6), 686-698.  
<https://doi.org/10.1016/j.trf.2012.08.002>
- Forjuoh, S. N. (2003). Traffic-related injury prevention interventions for low-income countries. *Injury control and safety promotion*, 10(1-2), 109-118.
- Forman, H., Kerr, J., Norman, G. J., Saelens, B. E., Durant, N. H., Harris, S. K., & Sallis, J. F. (2008). Reliability and validity of destination-specific barriers to walking and cycling for youth. *Preventive Medicine*, 46(4), 311-316.
- Fyhri, A., Heinen, E., Fearnley, N., & Sundfør, H. B. (2017). A push to cycling—exploring the e-bike's role in overcoming barriers to bicycle use with a survey and an intervention study [Article]. *International Journal of Sustainable Transportation*, 11(9), 681-695.  
<https://doi.org/10.1080/15568318.2017.1302526>
- Galway, L. P., Deck, E., Carastathis, J., & Sanderson, R. (2021). Exploring social-ecological influences on commuter cycling in a midsize northern city: A qualitative study in Thunder Bay, Canada [Article]. *Journal of Transport Geography*, 92, Article 102995. <https://doi.org/10.1016/j.jtrangeo.2021.102995>
- Gibbs, G. R. (2007). Thematic coding and categorizing. *Analyzing qualitative data*, 703, 38-56.
- Haileyesus, T., Annet, J. L., & Dellinger, A. M. (2007). Cyclists injured while sharing the road with motor vehicles. *Injury prevention*, 13(3), 202-206.  
<https://doi.org/10.1136/ip.2006.014019>
- Harper, C., Fan, Z. (2021). *Environmental Impacts of Short Car Trip Replacement with Micromobility Modes*  
([https://ppms.cit.cmu.edu/media/project\\_files/Final\\_Report\\_-\\_310.pdf](https://ppms.cit.cmu.edu/media/project_files/Final_Report_-_310.pdf))
- Heart Foundation. (2013). *Women and Cycling Survey* (<http://www.cycle-helmets.com/women-cycling-survey-2013.pdf>)
- Heesch, K. C., Sahlqvist, S., & Garrard, J. (2012). Gender differences in recreational and transport cycling: a cross-sectional mixed-methods comparison of cycling patterns, motivators, and constraints [Comparative Study Research Support, Non-U.S. Gov't]. *International Journal of Behavioral Nutrition & Physical Activity*, 9, 106. <https://doi.org/https://dx.doi.org/10.1186/1479-5868-9-106>
- Heesch, K. C., Sahlqvist, S., & Garrard, J. (2012). Gender differences in recreational and transport cycling: a cross-sectional mixed-methods comparison of cycling patterns, motivators, and constraints. *International Journal of Behavioral Nutrition and Physical Activity*, 9(1), 106.
- Heinen, E., & Buehler, R. (2019). Bicycle parking: a systematic review of scientific literature on parking behaviour, parking preferences, and their influence on

- cycling and travel behaviour [Article]. *Transport Reviews*, 39(5), 630-656.  
<https://doi.org/10.1080/01441647.2019.1590477>
- Heinen, E., Maat, K., & Van Wee, B. (2011). The role of attitudes toward characteristics of bicycle commuting on the choice to cycle to work over various distances [Article]. *Transportation Research Part D: Transport and Environment*, 16(2), 102-109. <https://doi.org/10.1016/j.trd.2010.08.010>
- Hull, A., & O'Holleran, C. (2014). Bicycle infrastructure: can good design encourage cycling? *Urban, Planning and Transport Research*, 2(1), 369-406.
- Iwińska, K., Blicharska, M., Pierotti, L., Tainio, M., & de Nazelle, A. (2018). Cycling in Warsaw, Poland – Perceived enablers and barriers according to cyclists and non-cyclists [Article]. *Transportation Research Part A: Policy and Practice*, 113, 291-301. <https://doi.org/10.1016/j.tra.2018.04.014>
- Jones, T., Harms, L., & Heinen, E. (2016). Motives, perceptions and experiences of electric bicycle owners and implications for health, wellbeing and mobility [Article]. *Journal of Transport Geography*, 53, 41-49.  
<https://doi.org/10.1016/j.jtrangeo.2016.04.006>
- Kent, J. L. (2015). Still feeling the car—The role of comfort in sustaining private car use. *Mobilities*, 10(5), 726-747.
- Léchaud, C. d. F. (2016). *The role of innovation on Bicycle Commuting in Portugal*].
- Leger, S. J., Dean, J. L., Edge, S., & Casello, J. M. (2019). “If I had a regular bicycle, I wouldn't be out riding anymore”: Perspectives on the potential of e-bikes to support active living and independent mobility among older adults in Waterloo, Canada [Article]. *Transportation Research Part A: Policy and Practice*, 123, 240-254. <https://doi.org/10.1016/j.tra.2018.10.009>
- Leger, S. J., Dean, J. L., Edge, S., & Casello, J. M. (2019). “If I had a regular bicycle, I wouldn't be out riding anymore”: Perspectives on the potential of e-bikes to support active living and independent mobility among older adults in Waterloo, Canada. *Transportation Research Part A: Policy and Practice*, 123, 240-254.
- Leyland, L. A., Spencer, B., Beale, N., Jones, T., & van Reekum, C. M. (2019). The effect of cycling on cognitive function and well-being in older adults. *PloS one*, 14 (2) (no pagination)(e0211779).  
<https://doi.org/http://dx.doi.org/10.1371/journal.pone.0211779>
- Linden, H., Fitch, A., Emerson, A., Hoeper, S., & Granner, M. L. (2020). Maybe next time: Perspectives on commuting from bike to work week non-participants [Article]. *Health Behavior and Policy Review*, 7(2), 110-119.  
<https://doi.org/10.14485/HBPR.7.2.4>
- Litman, T. (2015). *Evaluating active transport benefits and costs*. Victoria Transport Policy Institute.
- Liu, G., Nello-Deakin, S., te Brömmelstroet, M., & Yamamoto, Y. (2020). What makes a good cargo bike route? Perspectives from users and planners. *American Journal of Economics and Sociology*, 79(3), 941-965.
- Lizarondo L, S. C., Carrier J, Godfrey C, Rieger K, Salmond S, Apostolo J, Kirkpatrick P, Loveday H. (2020). *JBIC Manual for Evidence Synthesis*. Joanna Briggs Institute.  
<https://wiki.jbi.global/display/MANUAL/Chapter+8%3A+Mixed+methods+systematic+reviews>
- Lois, D., Lopez-Saez, M., & Rondinella, G. (2016). Qualitative analysis on cycle commuting in two cities with different cycling environments and policies [Empirical Study; Interview]. *Universitas Psychologica*, 15(2), 15-34.  
<https://doi.org/http://dx.doi.org/10.11144/Javeriana.upsy15-2.qacc>



- Lois, D., López-Sáez, M., & Rondinella, G. (2016). Qualitative analysis on cycle commuting in two cities with different cycling environments and policies [Article]. *Universitas Psychologica*, *15*(2), 175-194. <https://doi.org/10.11144/Javeriana.upsy15-2.qacc>
- Lusk, A. C., Furth, P. G., Morency, P., Miranda-Moreno, L. F., Willett, W. C., & Dennerlein, J. T. (2011). Risk of injury for bicycling on cycle tracks versus in the street. *Injury prevention*, *17*(2), 131-135. <https://doi.org/10.1136/ip.2010.028696>
- Manauh, K., Boisjoly, G., & El-Geneidy, A. (2017). Overcoming barriers to cycling: understanding frequency of cycling in a University setting and the factors preventing commuters from cycling on a regular basis. *Transportation*, *44*(4), 871-884. <https://link.springer.com/article/10.1007/s11116-016-9682-x>
- McLaren, A. T. (2016). Families and transportation: Moving towards multimodality and altermobility? *Journal of Transport Geography*, *51*, 218-225.
- Mehan, T. J., Gardner, R., Smith, G. A., & McKenzie, L. B. (2009). Bicycle-related injuries among children and adolescents in the United States [Article]. *Clinical Pediatrics*, *48*(2), 166-173. <https://doi.org/10.1177/0009922808324952>
- Mullan, E. (2013). Exercise, weather, safety, and public attitudes: A qualitative exploration of leisure cyclists' views on cycling for transport [Article]. *SAGE Open*, *3*(3), 1-9. <https://doi.org/10.1177/2158244013497030>
- Munn, Z., Moola, S., Riitano, D., & Lisy, K. (2014). The development of a critical appraisal tool for use in systematic reviews addressing questions of prevalence. *International Journal of Health Policy and Management*, *3*(3), 123.
- Muñoz, B., Monzon, A., & Lois, D. (2013). Cycling habits and other psychological variables affecting commuting by bicycle in Madrid, Spain. *Transportation Research Record* (pp. 1-9). National Research Council.
- Napper, R. (2020). What is a parked bicycle? Vehicle fleet characteristics in Australia [Article]. *Transportation Research Interdisciplinary Perspectives*, *7*, Article 100204. <https://doi.org/10.1016/j.trip.2020.100204>
- Nikitas, A. (2018). Understanding bike-sharing acceptability and expected usage patterns in the context of a small city novel to the concept: A story of 'Greek Drama' [Empirical Study; Nonclinical Case Study; Quantitative Study]. *Transportation research part F: traffic psychology and behaviour*, *56*, 306-321. <https://doi.org/http://dx.doi.org/10.1016/j.trf.2018.04.022>
- Nordengen, S., Andersen, L. B., Solbraa, A. K., & Riiser, A. (2019). Cycling is associated with a lower incidence of cardiovascular diseases and death: Part 1—systematic review of cohort studies with meta-analysis. *British Journal of Sports Medicine*, *53*(14), 870-878.
- Organisation for Economic Co-operation and Development (OECD). (2020). *Member countries* <https://www.oecd.org/about/members-and-partners/>
- Pérez, K., Olabarria, M., Rojas-Rueda, D., Santamariña-Rubio, E., Borrell, C., & Nieuwenhuijsen, M. (2017). The health and economic benefits of active transport policies in Barcelona. *Journal of Transport & Health*, *4*, 316-324.
- Pikora, T. J., Bull, F. C., Jamrozik, K., Knuiaman, M., Giles-Corti, B., & Donovan, R. J. (2002). Developing a reliable audit instrument to measure the physical environment for physical activity. *American journal of preventive medicine*, *23*(3), 187-194.
- Rabl, A., & De Nazelle, A. (2012). Benefits of shift from car to active transport. *Transport Policy*, *19*(1), 121-131.

- Rérat, P. (2019). Cycling to work: Meanings and experiences of a sustainable practice [Article]. *Transportation Research Part A: Policy and Practice*, 123, 91-104. <https://doi.org/10.1016/j.tra.2018.10.017>
- Richards, R., Murdoch, L., Reeder, A. I., & Amun, Q.-t. (2011). Political activity for physical activity: health advocacy for active transport. *International Journal of Behavioral Nutrition and Physical Activity*, 8(1), 1-7.
- RStudio Team. (2020). *RStudio: Integrated Development for R*. RStudio, PBC. <http://www.rstudio.com/>
- Sahlqvist, S. L., & Heesch, K. C. (2012). Characteristics of utility cyclists in Queensland, Australia: an examination of the associations between individual, social, and environmental factors and utility cycling [Research Support, Non-U.S. Gov't]. *Journal of Physical Activity & Health*, 9(6), 818-828.
- Salvo, G., Lashewicz, B. M., Doyle-Baker, P. K., & McCormack, G. R. (2018). A mixed methods study on the barriers and facilitators of physical activity associated with residential relocation. *Journal of Environmental and Public Health*, 2018 (no pagination)(1094812). <https://doi.org/http://dx.doi.org/10.1155/2018/1094812>
- Schneider, R. J., & Hu, L. (2015). Improving university transportation sustainability: Reducing barriers to campus bus and bicycle commuting [Article]. *International Journal of Sustainability Policy and Practice*, 11(1), 24-34. <https://www.scopus.com/inward/record.uri?eid=2-s2.0-84922780056&partnerID=40&md5=da8f72cb5997536f05e546a1e616aa8b>
- Schwarzer, G., & Schwarzer, M. G. (2012). Package ‘meta’. *The R foundation for statistical computing*, 9.
- Scott, C. (2009). *Research into barriers to cycling in NSW: Final report*
- Sears, J., Flynn, B. S., Aultman-Hall, L., & Dana, G. S. (2012). To bike or not to bike: Seasonal factors for bicycle commuting. *Transportation Research Record*, 2314(1), 105-111.
- Stangeby, I. (1997). *Attitudes towards walking and cycling instead of using a car*.
- Šťastná, M., Vaishar, A., Zapletalová, J., & Ševelová, M. (2018). Cycling: A benefit for health or just a means of transport? Case study Brno (Czech Republic) and its surroundings [Article]. *Transportation research part F: traffic psychology and behaviour*, 55, 219-233. <https://doi.org/10.1016/j.trf.2018.02.006>
- Stewart, G., Anokye, N. K., & Pokhrel, S. (2015). What interventions increase commuter cycling? A systematic review. *BMJ Open*, 5(8), e007945.
- Stronach, M., Maxwell, H., & Taylor, T. (2016). ‘Sistas’ and Aunties: sport, physical activity, and Indigenous Australian women. *Annals of Leisure Research*, 19(1), 7-26.
- Swiers, R., Pritchard, C., & Gee, I. (2017). A cross sectional survey of attitudes, behaviours, barriers and motivators to cycling in university students [Empirical Study; Quantitative Study]. *Journal of Transport & Health*, 6, 379-385. <https://doi.org/http://dx.doi.org/10.1016/j.jth.2017.07.005>
- The Heart Foundation. (2011). *Riding a bike for transport* (<https://www.heartfoundation.org.au/images/uploads/publications/Cycling-Survey-2011-Riding-a-Bike-for-Transport.pdf>)
- Ton, D., Zomer, L. B., Schneider, F., Hoogendoorn-Lanser, S., Duives, D., Cats, O., & Hoogendoorn, S. (2019). Latent classes of daily mobility patterns: the relationship with attitudes towards modes [Article]. *Transportation*. <https://doi.org/10.1007/s11116-019-09975-9>



- Twaddle, H., Hall, F., & Bracic, B. (2010). Latent bicycle commuting demand and effects of gender on commuter cycling and accident rates. *Transportation Research Record* (pp. 28-36).
- Tyndall, J. (2010). *AACODS Checklist*. Flinders University  
[https://dspace.flinders.edu.au/xmlui/bitstream/handle/2328/3326/AACODS\\_Checklist.pdf?sequence=4](https://dspace.flinders.edu.au/xmlui/bitstream/handle/2328/3326/AACODS_Checklist.pdf?sequence=4)
- Vagane, L. (2007). Short car trips in Norway: is there a potential for modal shift? (Ed.), (Eds.). Proceedings of the European Transport Conference 2007, Lieden, The Netherlands.
- van Bekkum, J. E., Williams, J. M., & Morris, P. G. (2011). Cycle commuting and perceptions of barriers: Stages of change, gender and occupation [Empirical Study; Quantitative Study]. *Health Education, 111*(6), 476-497.  
<https://doi.org/http://dx.doi.org/10.1108/09654281111180472>
- van Bekkum, J. E., Williams, J. M., & Morris, P. G. (2011). Employees' perceptions of cycle commuting: A qualitative study [Article]. *Health Education, 111*(3), 198-215. <https://doi.org/10.1108/09654281111123484>
- Welk, G. J., Wood, K., & Morss, G. (2003). Parental influences on physical activity in children: An exploration of potential mechanisms. *Pediatric Exercise Science, 15*(1), 19-33.
- Whannell, P., Whannell, R., & White, R. (2012). Tertiary student attitudes to bicycle commuting in a regional Australian university [Article]. *International Journal of Sustainability in Higher Education, 13*(1), 34-45.  
<https://doi.org/10.1108/14676371211190290>
- Wilson, A., & Mitra, R. (2020). Implementing cycling infrastructure in a politicized space: Lessons from Toronto, Canada. *Journal of Transport Geography, 86*, 102760.
- Winters, M., Davidson, G., Kao, D., & Teschke, K. (2011). Motivators and deterrents of bicycling: Comparing influences on decisions to ride [Article]. *Transportation, 38*(1), 153-168. <https://doi.org/10.1007/s11116-010-9284-y>
- Winters, M., Sims-Gould, J., Franke, T., & McKay, H. (2015). "I grew up on a bike": Cycling and older adults [Article]. *Journal of Transport and Health, 2*(1), 58-67. <https://doi.org/10.1016/j.jth.2014.06.001>
- Yang, L., Sahlqvist, S., McMinn, A., Griffin, S. J., & Ogilvie, D. (2010). Interventions to promote cycling: systematic review. *bmj, 341*.
- Yeung, J., Wearing, S., & Hills, A. P. (2008). Child transport practices and perceived barriers in active commuting to school. *Transportation Research Part A: Policy and Practice, 42*(6), 895-900.
- Zander, A., Passmore, E., Mason, C., & Rissel, C. (2013). Joy, exercise, enjoyment, getting out: a qualitative study of older people's experience of cycling in Sydney, Australia [Research Support, Non-U.S. Gov't]. *Journal Of Environmental & Public Health, 2013*, 547453.  
<https://doi.org/https://dx.doi.org/10.1155/2013/547453>