

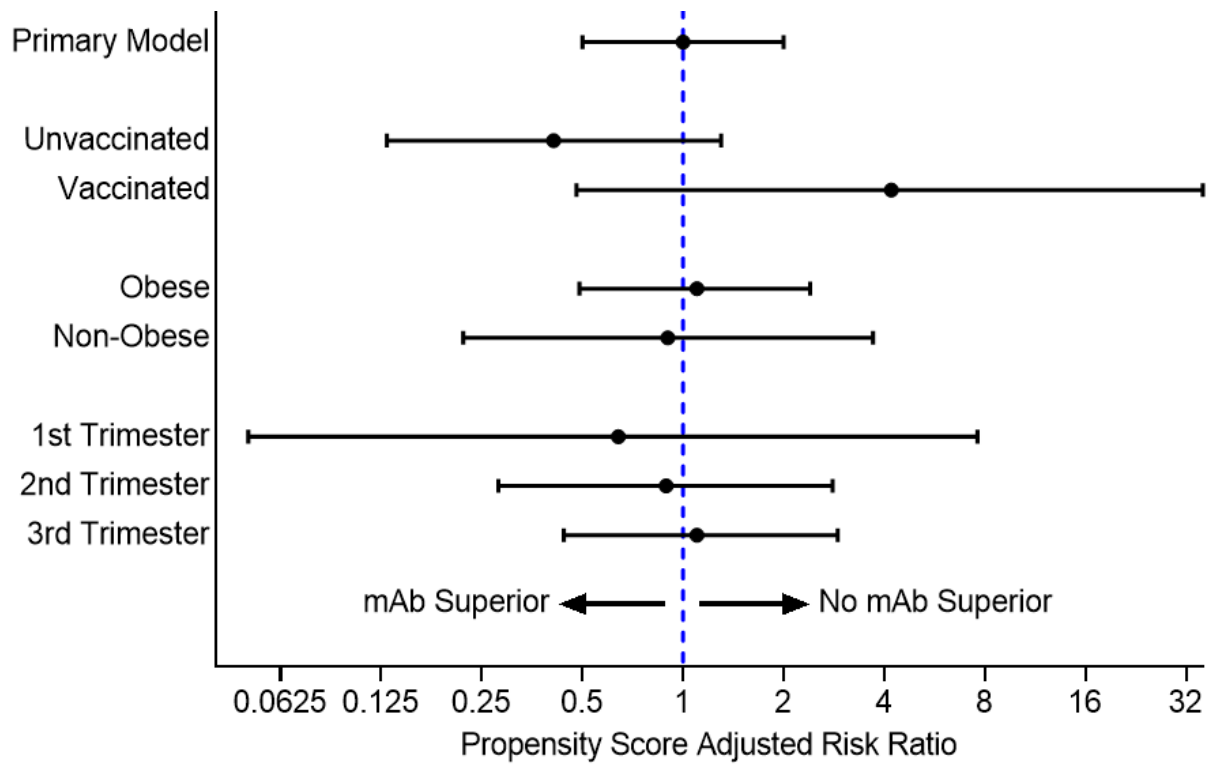
Supplement 1 - Supplemental Figures and Tables

McCreary EK, Lemon L, Megli C, et al. Monoclonal antibodies for treatment of SARS-CoV-2 infection during pregnancy

Table of Contents

eFigure 1.	Forest Plot of Adjusted Risk Ratios for COVID-19 Associated Outcome from Propensity Score Adjusted Analysis, by Subgroups	2
eFigure 2.	Forest Plot of Adjusted Risk Ratios for Non-COVID-19 Associated Outcome from Propensity Score Adjusted Analysis, by Subgroups	3
eFigure 3.	Cumulative Density Plot of Non-COVID-19 Related Outcome Events, Stratified by Monoclonal Antibody Treatment	4
eFigure 4.	Histograms of Propensity Scores, Stratified by Monoclonal Antibody Treatment	5
eFigure 5.	Love Plot of Standardized Percent Bias Across Covariates Before and After Propensity Score Matching	6
eFigure 6.	Histograms of Cohort Accrual Over Time, Stratified by Monoclonal Antibody Treatment	7
eFigure 7.	Histograms of Gestational Age at Index Date, Stratified by Monoclonal Antibody Treatment	8
eTable 1.	Comparison of Characteristics of Pregnant mAb Treated vs Non-Treated Persons in Propensity Score-Matched Cohorts	9
eTable 2.	Risk-Adjusted Frequency of COVID-19 Associated Outcome or Other Admission Within 28-days of SARS-CoV-2 positive Test or Monoclonal Antibody Infusion in Unvaccinated, Vaccinated, Obese and Non-Obese Pregnancies	10
eTable 3.	Hypertensive Disorder at Delivery Identified by ICD Coding Documented During Delivery Admission	11

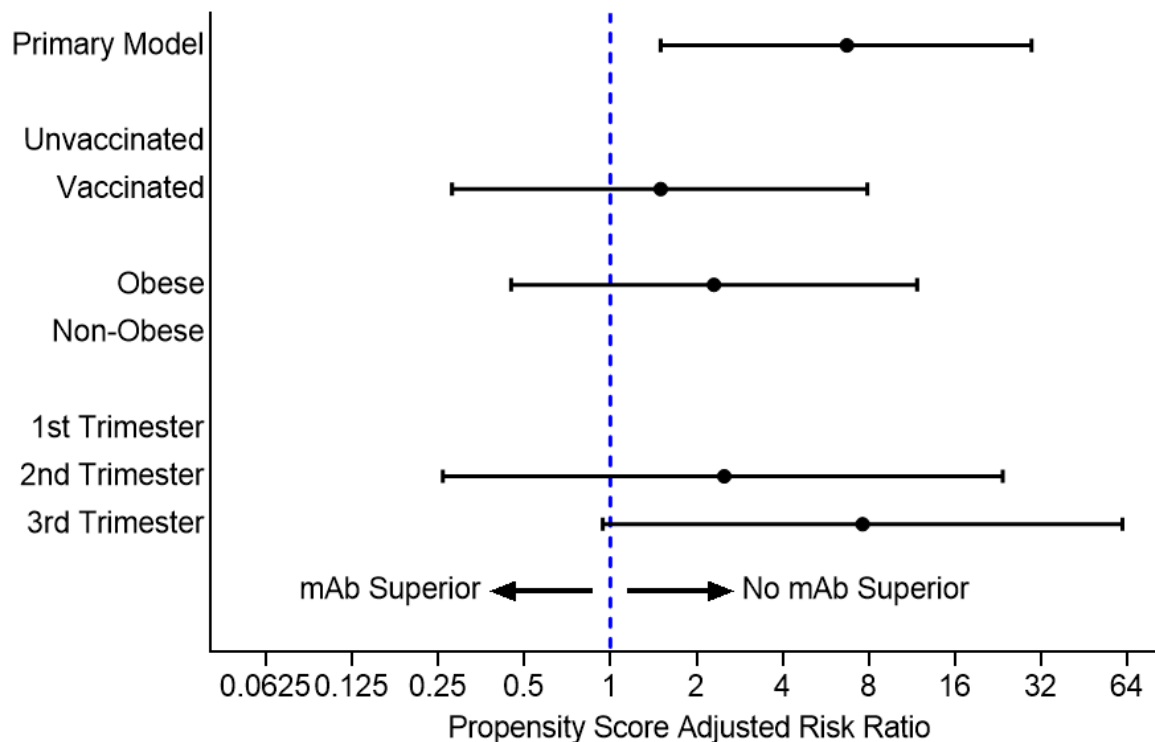
eFigure 1. Forest Plot of Adjusted Risk Ratios for COVID-19 Associated Outcome from Propensity Score Adjusted Analysis, by Subgroups



First trimester= <14 weeks gestation
Second trimester=14 weeks to <27 weeks gestation
Third trimester= 27+ weeks gestation

Abbreviations: mAb: monoclonal antibodies

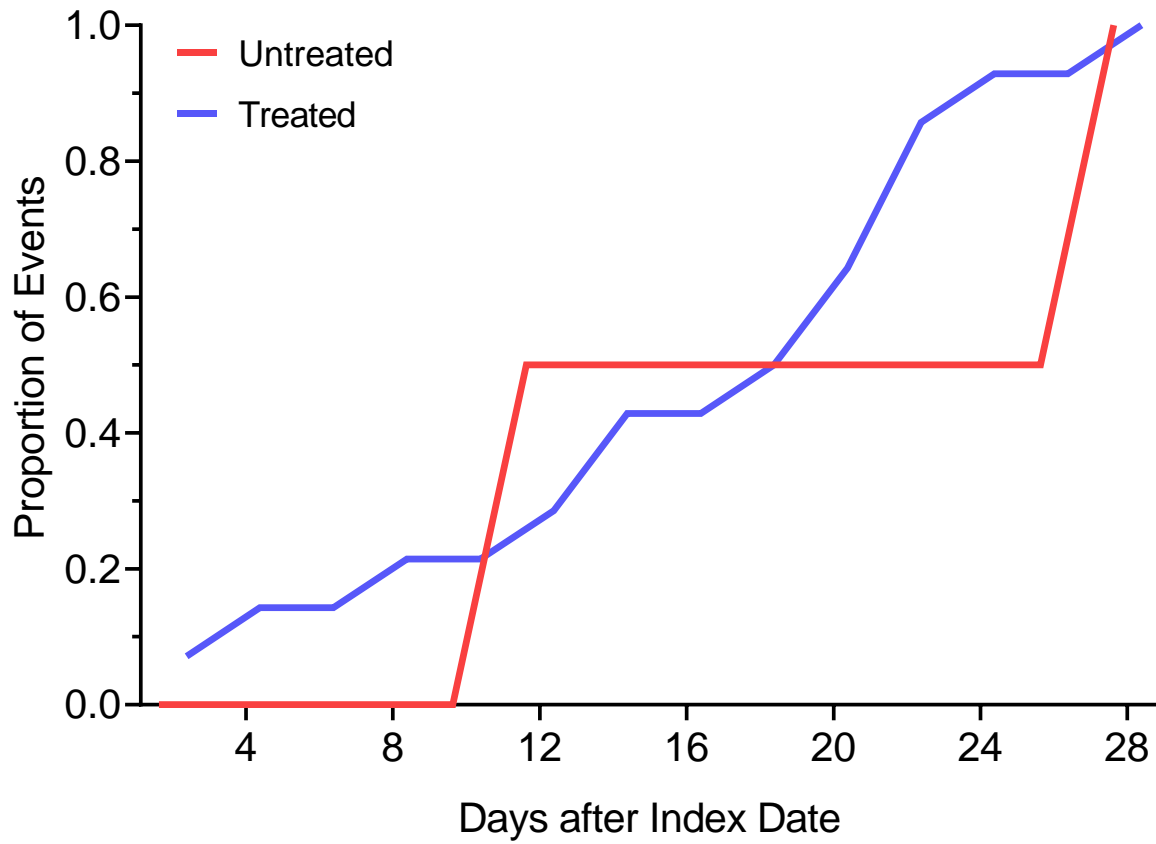
eFigure 2. Forest Plot of Adjusted Risk Ratios for Non-COVID-19 Associated Outcome from Propensity Score Adjusted Analysis, by Subgroups



First trimester= <14 weeks gestation
Second trimester=14 weeks to <27 weeks gestation
Third trimester= 27+ weeks gestation

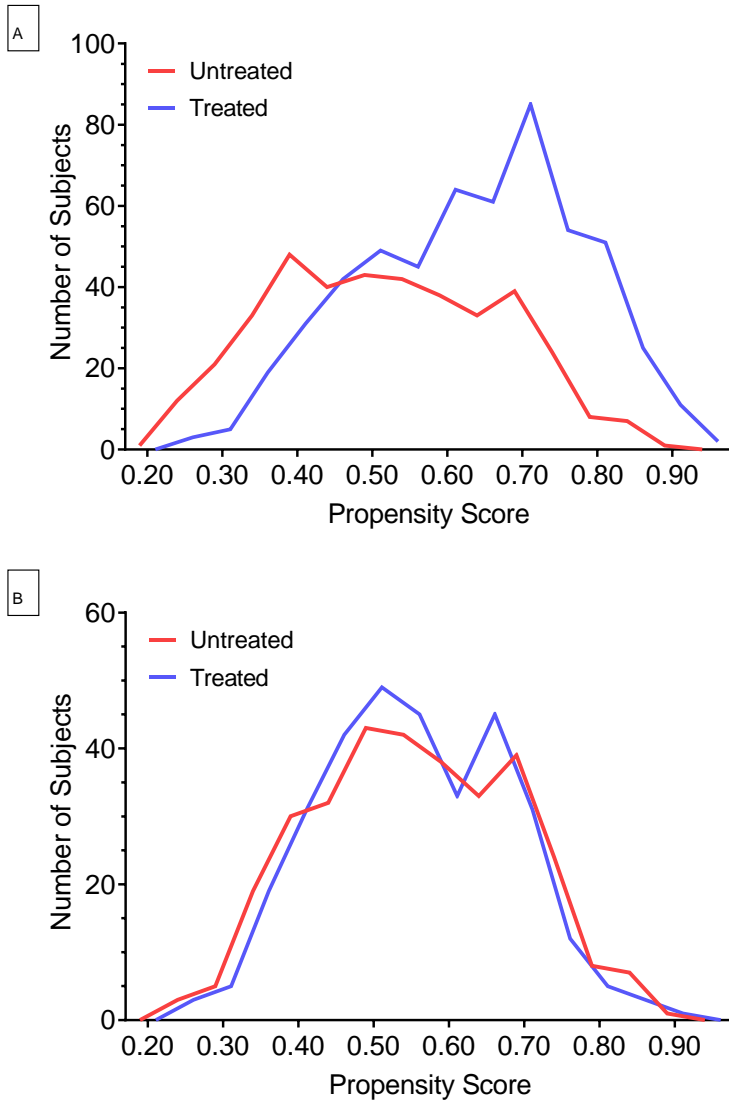
Abbreviations: mAb: monoclonal antibodies

eFigure 3. Cumulative Density Plot of Non-COVID-19 Related Outcome Events, Stratified by Monoclonal Antibody Treatment



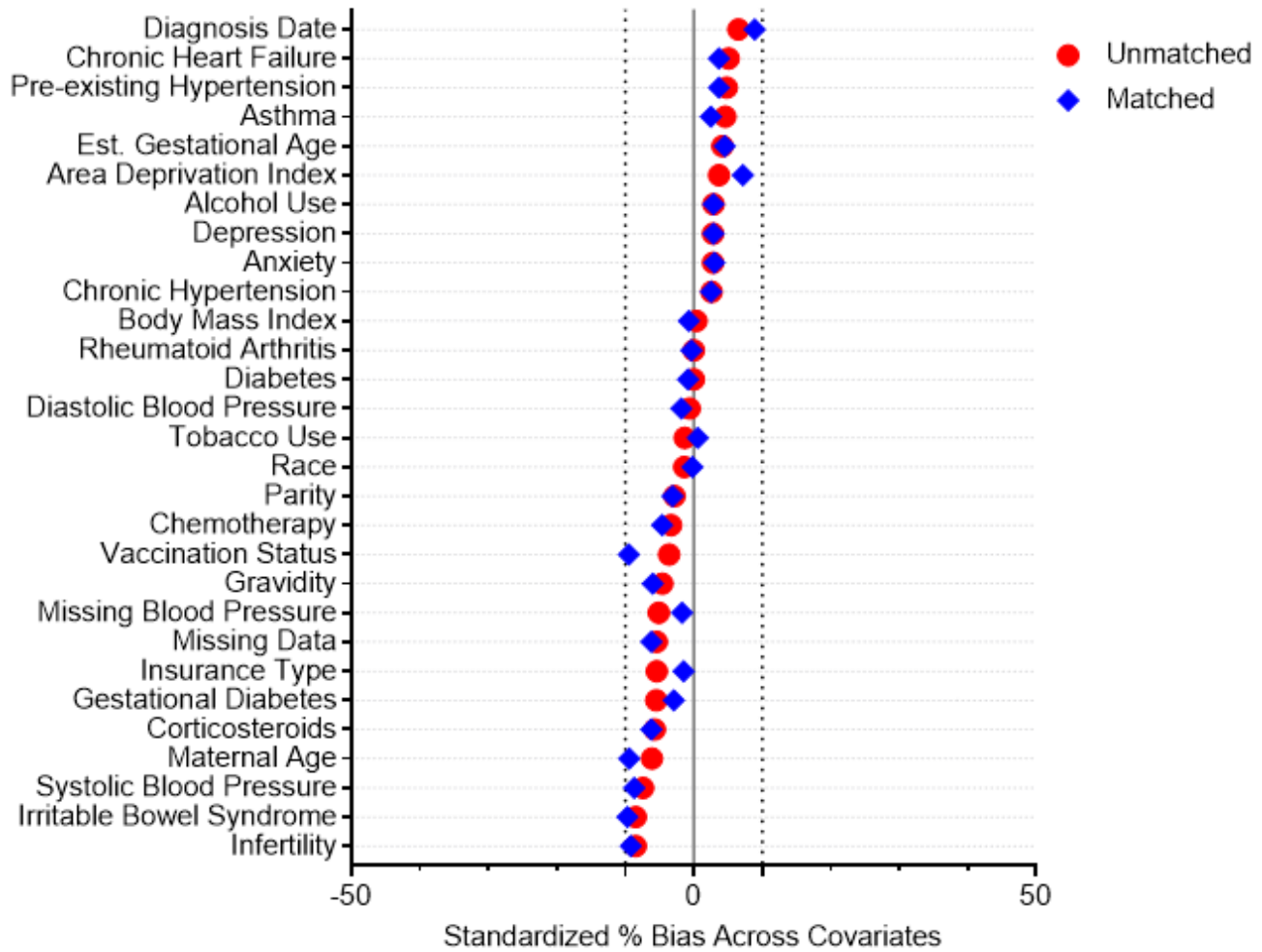
Red represents untreated, blue represents treated with monoclonal antibodies.

eFigure 4. Histograms of Propensity Scores, Stratified by Monoclonal Antibody Treatment



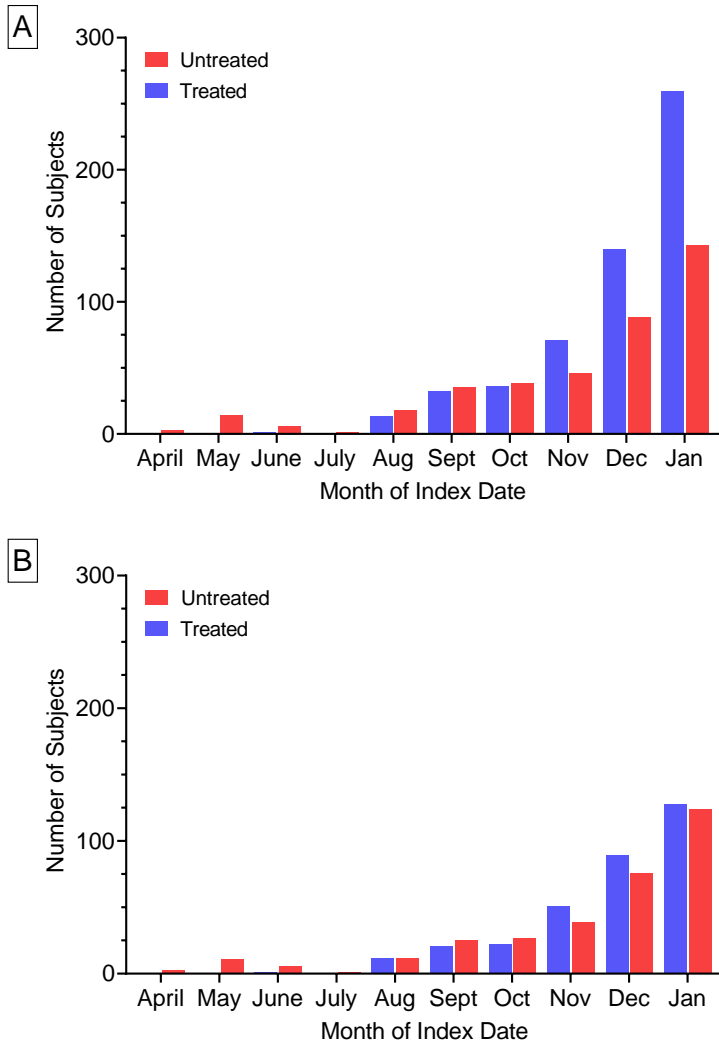
Red represents untreated, blue represents treated with monoclonal antibodies. Panel A represents a histogram of propensity scores for the full cohort (n=944). Panel B represents a histogram of propensity scores for the matched cohort (n=648).

eFigure 5. Love Plot of Standardized Percent Bias Across Covariates Before and After Propensity Score Matching



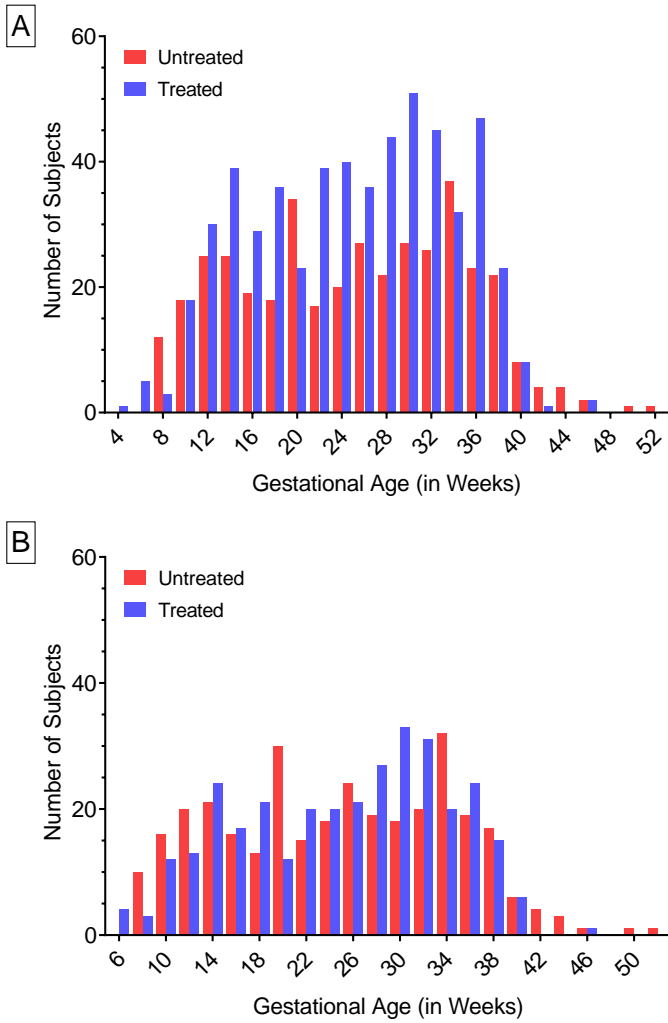
Red circle represents % bias across covariates before propensity score matching. Blue diamond represents % bias across covariates after propensity score matching.

eFigure 6. Histograms of Cohort Accrual Over Time, Stratified by Monoclonal Antibody Treatment



Red represents untreated and blue represents treated with monoclonal antibodies. Panel A represents a histogram of accrual of the full cohort (n=944). Panel B represents a histogram of accrual for the propensity matched cohort (n=648).

eFigure 7. Histograms of Gestational Age at Index Date, Stratified by Monoclonal Antibody Treatment



Red represents untreated and blue represents treated with monoclonal antibodies. Panel A represents a histogram of gestational age at index date for the full cohort (n=944). Panel B represents a histogram of gestational age at index date for the propensity matched cohort (n=648).

eTable 1. Comparison of Characteristics of Pregnant mAb Treated vs. Non-treated Persons in Propensity Score-Matched Cohort

	All Patients	Treated	Non-Treated	p-value
No.	648	324	324	
<i>Patient Characteristics</i>				
Age, Median (IQR) years	29.1 (25.2, 33.0)	29.0 (24.0, 33.0)	29.4 (25.8, 33.0)	0.37
Race, n (%)				
White	494 (76.2%)	246 (75.9%)	248 (76.5%)	0.90
Black	134 (20.7%)	67 (20.7%)	67 (20.7%)	
Other	20 (3.1%)	11 (3.4%)	9 (2.8%)	
Medical History, n (%)				
Smoking	210 (32.4%)	104 (32.1%)	106 (32.7%)	0.87
Diabetes-Pre-gestational	10 (1.5%)	5 (1.5%)	5 (1.5%)	1.00
Diabetes-Gestational	19 (2.9%)	8 (2.5%)	11 (3.4%)	0.48
Asthma	211 (32.6%)	109 (33.6%)	102 (31.5%)	0.56
Hypertension-Preexisting	25 (3.9%)	14 (4.3%)	11 (3.4%)	0.54
Hypertension-Preeclampsia	0 (0)	0 (0)	0 (0.0)	NA
Infertility	45 (6.9%)	19 (5.9%)	26 (8.0%)	0.28
Other obstetric conditions	40 (6.2%)	22 (6.8%)	18 (5.6%)	0.51
Cancer	2 (0.3%)	0 (0.0%)	2 (0.6%)	0.16
Chemotherapy	24 (3.7%)	11 (3.4%)	13 (4.0%)	0.68
Other chronic conditions	38 (5.9%)	20 (6.2%)	18 (5.6%)	0.74
Corticosteroid treatment	76 (11.7%)	35 (10.8%)	41 (12.7%)	0.46
Vaccination status, n (%)				
Unvaccinated	143 (22.1%)	91 (28.1%)	52 (16.0%)	0.001
Partially vaccinated	40 (6.2%)	23 (7.1%)	17 (5.2%)	
Fully vaccinated	222 (34.3%)	100 (30.9%)	122 (37.7%)	
Unknown/not determined	243 (37.5%)	110 (34.0%)	133 (41.0%)	
Charlson Comorbidity Index Score, Median (IQR)	0 (0, 0)	0 (0, 0)	0 (0, 0)	0.94
Body mass index, Median (IQR)	30.2 (26.6, 34.3)	31 (26.7, 33.6)	30 (26.4, 34.5)	0.77
Gestational age at COVID-19 diagnosis or infusion (days), Median (IQR)	180.5 (120.0, 228.5)	187 (125, 223.5)	175.5 (117.5, 231.5)	0.51
Trimester, n (%)				
First trimester	102 (15.7%)	43 (13.3%)	59 (18.2%)	0.19
Second trimester	248 (38.3%)	124 (38.3%)	124 (38.3%)	
Third trimester	298 (46.0%)	157 (48.5%)	141 (43.5%)	
Nulliparous, n (%)	223 (34.4%)	113 (34.9%)	110 (34.0%)	0.80
Early miscarriage, n (%)	6 (0.9%)	4 (1.2%)	2 (0.6%)	0.41
Insurance type, n (%)				
Commercial	381 (58.8%)	193 (59.6%)	188 (58.0%)	0.65
Public	221 (34.1%)	111 (34.3%)	110 (34.0%)	
Self-pay/Other	46 (7.1%)	20 (6.2%)	26 (8.0%)	
Area Deprivation Index, Median (IQR)	71 (53, 86)	70 (53, 86)	71 (53, 86)	0.77

eTable 2. Risk-Adjusted Frequency of COVID-19 Associated Outcome or Other Admission Within 28-days of SARS-CoV-2 Positive Test or Monoclonal Antibody Infusion in Unvaccinated, Vaccinated, Obese, and Non-Obese Pregnancies

Model	No.	Total Visits/Total No. (%)		Risk-Adjusted 28-day COVID visit, per 100 people (95%CI)		Risk Difference, per 100 people (95% CI)	Risk Ratio (95% CI)
		Treated	Non-treated	Treated	Non-treated		
<i>Unvaccinated</i>							
COVID-associated							
Crude	178	5/122 (4.1%)	6/56 (10.7%)	4.1 (0.58, 7.6)	10.7 (2.6, 18.8)	-6.6 (-15.5, 2.2)	0.38 (0.12, 1.2)
PS-adjusted	177	5/121 (4.1%)	6/56 (10.7%)	4.2 (0.61, 7.8)	10.2 (2.5, 18.0)	-6.0 (-14.5, 2.5)	0.41 (0.13, 1.3)
Other admission							
Crude	178	6/122 (4.9%)	0	---	---	---	---
PS-adjusted	177	6/121 (5.0%)	0	---	---	---	---
<i>Vaccinated</i>							
COVID-associated							
Crude	392	6/265 (2.3%)	1/127 (0.79%)	2.3 (0.47, 4.1)	0.79 (-0.75, 2.3)	1.5 (-0.88, 3.8)	2.9 (0.35, 23.6)
PS-adjusted	387	6/262 (2.3%)	1/125 (0.8%)	2.6 (0.53, 4.7)	0.63 (-0.61, 1.9)	2.0 (-0.47, 4.4)	4.2 (0.48, 35.9)
Other admission							
Crude	392	6/265 (2.3%)	2/127 (1.6%)	2.3 (0.47, 4.1)	1.6 (-0.59, 3.7)	0.69 (-2.1, 3.5)	1.4 (0.29, 7.0)
PS-adjusted	387	6/262 (2.3%)	2/125 (1.6%)	2.3 (0.47, 4.2)	1.5 (-0.61, 3.7)	0.80 (-2.1, 3.7)	1.5 (0.30, 7.7)
<i>Obese</i>							
COVID-associated							
Crude	569	13/337 (3.9%)	13/232 (5.6%)	3.9 (1.8, 5.9)	5.6 (2.6, 8.6)	-1.8 (-5.4, 1.9)	0.69 (0.33, 1.5)
PS-adjusted	560	13/332 (3.9%)	12/228 (5.3%)	4.7 (2.2, 7.2)	4.3 (1.8, 6.7)	0.39 (-3.2, 4.0)	1.1 (0.49, 2.4)
Other admission							
Crude	569	10/337 (3.0%)	2/232 (0.86%)	3.0 (1.2, 4.8)	0.86 (-0.33, 2.1)	2.1 (-0.06, 4.3)	3.4 (0.76, 15.6)
PS-adjusted	560	10/332 (3.0%)	2/228 (0.88%)	3.0 (1.1, 4.9)	0.88 (-0.35, 2.1)	2.1 (-0.19, 4.4)	3.4 (0.71, 16.1)
<i>Non-Obese</i>							
COVID-associated							
Crude	375	4/215 (1.9%)	4/160 (2.5%)	1.9 (0.05, 3.7)	2.5 (0.08, 4.9)	-0.6 (-3.7, 2.4)	0.74 (0.19, 2.9)
PS-adjusted	370	4/215 (1.9%)	4/155 (2.6%)	2.1 (0.04, 4.1)	2.3 (0.03, 4.5)	-0.22 (-3.3, 2.8)	0.90 (0.22, 3.7)
Other admission							
Crude	375	7/215 (3.3%)	0	---	---	---	---
PS-adjusted	370	7/215 (3.3%)	0	---	---	---	---

eTable 3. Hypertensive Disorder At Delivery Identified by the following ICD Coding Documented During Delivery Admission

Codes:									
O10011	O10919	O1492	O1493	O1494	O1495	O1500	O1502	O1503	O151
O10012	O1092	O152	O159	O161	O162	O163	O164	O165	O169
O10013	O1093	O1422	O1042	O1412	O1032	O1402	O1022	O133	O10119
O10019	O111	O1423	O1043	O1413	O1033	O1403	O1023	O134	O10211
O1002	O112	O1424	O10911	O1414	O10411	O1404	O10311	O135	O10212
O1003	O113	O1425	O10912	O1415	O10412	O1405	O10312	O139	O10213
O10111	O114	O1490	O10913	O1420	O10413	O1410	O10313	O1400	
O10112	O115	O10113	O119	O1012	O131	O1013	O132	O10219	
