

Supplementary material to

COVID-19 outcomes by cancer status, type, treatment, and vaccination

Maxwell Salvatore, Miriam M Hu, Lauren J Beesley, Alison Mondul, Celeste L Pearce,
Christopher R. Friese, Lars G Fritsche, Bhramar Mukherjee

Section 1. Tables and figures accompanying primary and vaccination results.

Figure S1. Flowchart describing derivation of COVID-19 tested analytic cohort from raw COVID-19 tested data.

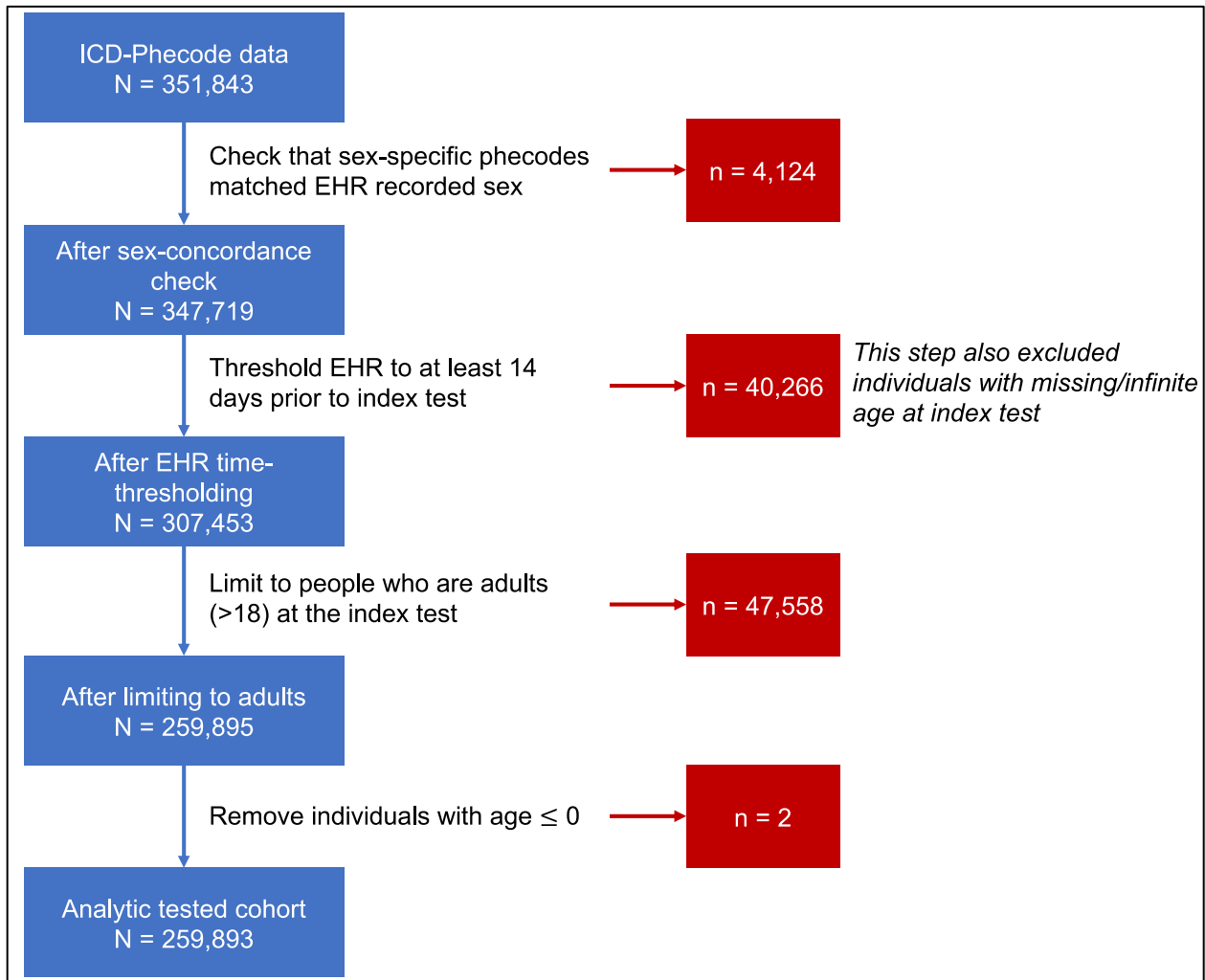


Figure S2. An UpSet diagram showing the distribution of cancer treatment patterns among COVID-19 positive individuals with cancer (n = 10,266). Treatment-based analyses were performed using three mutually exclusive categories: chemotherapy (n = 2,449), radiation only (n = 394), and surgery only (n = 111). Treatment was defined according to **Table S2**.

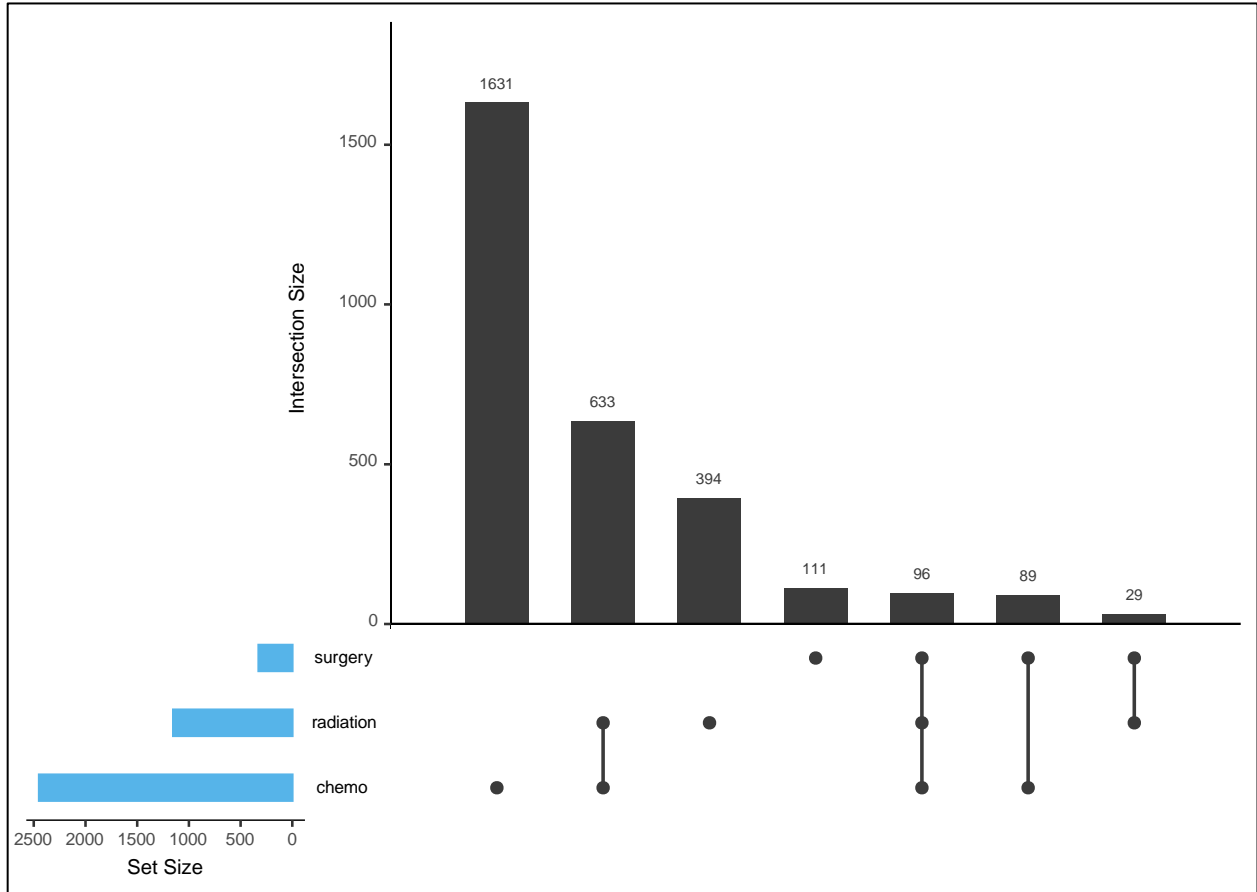


Table S1. Phecodes used to identify individuals with cancer, along with their phenotype description and the number of individuals in the tested positive cohort with the corresponding phecode.

Phecode	Phenotype	Count	Phecode	Phenotype	Count	Phecode	Phenotype	Count
145	Cancer of mouth	241	174	Breast cancer	1,120	195.3	Malignant neoplasm of head, face, and neck	179
145.1	Cancer of lip	16	174.1	Breast cancer [female]	1,064	196	Radiotherapy	671
145.2	Cancer of tongue	82	174.11	Malignant neoplasm of female breast	1,034	197	Chemotherapy	1,754
145.3	Cancer of major salivary glands	70	174.2	Breast cancer [male]	8	198	Secondary malignant neoplasm	1,300
145.4	Cancer of the gums	20	174.3	Neoplasm of uncertain behavior of breast	76	198.1	Secondary malignancy of lymph nodes	734
145.5	Cancer of the mouth floor	16	175	Acquired absence of breast	274	198.2	Secondary malignancy of respiratory organs	233
149	Cancer of larynx, pharynx, nasal cavities	229	180	Cervical cancer and dysplasia	1,140	198.3	Secondary malignant neoplasm of digestive systems	161
149.1	Cancer of oropharynx	72	180.1	Cervical cancer	170	198.4	Secondary malignant neoplasm of liver	179
149.2	Cancer of nasopharynx	29	180.3	Cervical intraepithelial neoplasia [CIN] [Cervical dysplasia]	1,016	198.5	Secondary malignancy of brain/spine	114
149.3	Cancer of hypopharynx	18	182	Malignant neoplasm of uterus	218	198.6	Secondary malignancy of bone	230
149.4	Cancer of larynx	69	184	Cancer of other female genital organs	377	198.7	Secondary malignant neoplasm of skin	58
149.5	Hx of malignant neoplasm of oral cavity and pharynx	64	184.1	Malignant neoplasm of ovary and other uterine adnexa	179	199	Neoplasm of uncertain behavior	2,304
149.9	Cancer of of nasal cavities	35	184.11	Malignant neoplasm of ovary	135	199.4	Neurofibromatosis	50
150	Cancer of esophagus	90	184.2	Cancer of other female genital organs (excluding uterus and ovary)	169	200	Myeloproliferative disease	925
151	Cancer of stomach	115	185	Cancer of prostate	910	200.1	Polycythemia vera	214
153	Colorectal cancer	563	187	Cancer of other male genital organs	143	201	Hodgkin's disease	116
153.2	Colon cancer	443	187.1	Malignant neoplasm of unspecified male genital organ	24	202	Cancer of other lymphoid, histiocytic tissue	836
153.3	Malignant neoplasm of rectum, rectosigmoid junction, and anus	296	187.2	Malignant neoplasm of testis	90	202.2	Non-Hodgkins lymphoma	745
155	Cancer of liver and intrahepatic bile duct	161	187.8	Neoplasm of uncertain behavior of male genital organs	39	202.21	Nodular lymphoma	299
155.1	Malignant neoplasm of liver, primary	128	189	Cancer of urinary organs (incl. kidney and bladder)	732	202.22	Reticulosarcoma	137
157	Pancreatic cancer	108	189.1	Cancer of kidney and renal pelvis	382	202.23	Lymphosarcoma	21
158	Neoplasm of unspecified nature of digestive system	552	189.11	Malignant neoplasm of kidney, except pelvis	326	202.24	Large cell lymphoma	137
159	Malignant neoplasm of other and ill-defined sites within the digestive organs and peritoneum	520	189.12	Malignant neoplasm of renal pelvis	42	204	Leukemia	616
159.2	Malignant neoplasm of small intestine, including duodenum	44	189.2	Cancer of bladder	388	204.1	Lymphoid leukemia	219
159.3	Malignant neoplasm of gallbladder and extrahepatic bile ducts	27	189.21	Malignant neoplasm of bladder	350	204.11	Lymphoid leukemia, acute	97
159.4	Malignant neoplasm of retroperitoneum and peritoneum	54	189.4	Malignant neoplasm of other urinary organs	93	204.12	Lymphoid leukemia, chronic	134
164	Cancer of intrathoracic organs	47	190	Cancer of eye	62	204.2	Myeloid leukemia	237
165	Cancer within the respiratory system	349	191	Malignant and unknown neoplasms of brain and nervous system	306	204.21	Myeloid leukemia, acute	125
165.1	Cancer of bronchus; lung	306	191.1	Cancer of brain and nervous system	179	204.22	Myeloid leukemia, chronic	75
170	Cancer of bone and connective tissue	427	191.11	Cancer of brain	157	204.3	Monocytic leukemia	34
170.1	Bone cancer	156	193	Thyroid cancer	322	204.4	Multiple myeloma	211
170.2	Cancer of connective tissue	324	194	Cancer of other endocrine glands	202	209	Neuroendocrine tumors	98
172.1	Melanomas of skin, dx or hx	1,724	195	Cancer, suspected or other	6,000	860	Bone marrow or stem cell transplant	227
172.11	Melanomas of skin	751	195.1	Malignant neoplasm, other	5,878			

Cells highlighted in pink indicate codes corresponding to lung cancer; cells highlighted in green indicate codes corresponding to melanoma; cells highlighted in blue indicate codes corresponding to breast cancer; cells highlighted in orange indicate codes corresponding to prostate cancer; cells highlighted in yellow indicate codes corresponding to hematologic malignancies

Table S2. Codes used to define cancers diagnoses and treatments. Cancer types are highlighted different colors and correspond to the highlighted rows of the same color in Table S1.

Definition	Code Type	Codes
Cancer	Phecode	145, 145.1, 145.2, 145.3, 145.4, 145.5, 149, 149.1, 149.2, 149.3, 149.4, 149.5, 149.9, 150, 151, 153, 153.2, 153.3, 155, 155.1, 157, 158, 159, 159.2, 159.3, 159.4, 164, 165, 165.1, 170, 170.1, 170.2, 172.1, 172.11, 174, 174.1, 174.11, 174.2, 174.3, 175, 180, 180.1, 180.3, 182, 184, 184.1, 184.11, 184.2, 185, 187, 187.1, 187.2, 187.8, 189, 189.1, 189.11, 189.12, 189.2, 189.21, 189.4, 190, 191, 191.1, 191.11, 193, 194, 195, 195.1, 195.3, 196, 197, 198, 198.1, 198.2, 198.3, 198.4, 198.5, 198.6, 198.7, 199, 199.4, 200, 200.1, 201, 202, 202.2, 202.21, 202.22, 202.23, 202.24, 204, 204.1, 204.11, 204.12, 204.2, 204.21, 204.22, 204.3, 204.4, 209, 860
Skin cancer	Phecode	172.1, 172.11
Hematologic malignancies	Phecode	200, 200.1, 201, 202, 202.2, 202.21, 202.22, 202.23, 202.24, 204, 204.1, 204.11, 204.12, 204.2, 204.21, 204.22, 204.3, 204.4
Breast cancer	Phecode	174, 174.1, 174.11, 174.2, 174.3, 175
Prostate cancer	Phecode	185
Lung cancer	Phecode	165, 165.1
Chemotherapy	CPT	96401, 96402, 96403, 96404, 96405, 96406, 96407, 96408, 96409, 96410, 96411, 96412, 96413, 96414, 96415, 96416, 96417, 96420, 96421, 96422, 96423, 96424, 96425 96360*, 96361*, 96440*, 96441*, 96442*, 96443*, 96444*, 96445*, 96446*, 96447*, 96448*, 96449*, 96450*, 96451*, 96452*, 96453*, 96454*, 96455*, 96456*, 96457*, 96458*, 96459*, 96460*, 96461*, 96462*, 96463*, 96464*, 96465*, 96466*, 96467*, 96468*, 96469*, 96470*, 96471*, 96472*, 96473*, 96474*, 96475*, 96476*, 96477*, 96478*, 96479*, 96480*, 96481*, 96482*, 96483*, 96484*, 96485*, 96486*, 96487*, 96488*, 96489*, 96490*, 96491*, 96492*, 96493*, 96494*, 96495*, 96496*, 96497*, 96498*, 96499*, 96500*, 96501*, 96502*, 96503*, 96504*, 96505*, 96506*, 96507*, 96508*, 96509*, 96510*, 96511*, 96512*, 96513*, 96514*, 96515*, 96516*, 96517*, 96518*, 96519*, 96520*, 96521*, 96522*, 96523*, 96524*, 96525*, 96526*, 96527*, 96528*, 96529*, 96530*, 96531*, 96532*, 96533*, 96534*, 96535*, 96536*, 96537*, 96538*, 96539*, 96540*, 96541*, 96542*, 96543*, 96544*, 96545*, 96546*, 96547*, 96548*, 96549*

	ICD-9 or -10	99.25, Z51.1, Z51.11, T80.810, Z92.21, D61.810, D64.81, D70.1, T45.1X5A, V58.11, 999.81, V87.41, 284.11, 285.3, 288.03, E933.1, V66.2
Radiation therapy	CPT	77295, 77296, 77297, 77298, 77299, 77300, 77301, 77302, 77303, 77304, 77305, 77306, 77307, 77308, 77309, 77310, 77311, 77312, 77313, 77314, 77315, 77316, 77317, 77318, 77319, 77320, 77321, 77322, 77323, 77324, 77325, 77326, 77327, 77328, 77329, 77330, 77331, 77332, 77333, 77334, 77335, 77336, 77337, 77338, 77339, 77340, 77341, 77342, 77343, 77344, 77345, 77346, 77347, 77348, 77349, 77350, 77351, 77352, 77353, 77354, 77355, 77356, 77357, 77358, 77359, 77360, 77361, 77362, 77363, 77364, 77365, 77366, 77367, 77368, 77369, 77370, 77371, 77372, 77373, 77374, 77375, 77376, 77377, 77378, 77379, 77380, 77381, 77382, 77383, 77384, 77385, 77386, 77387, 77399, 77401, 77402, 77403, 77404, 77405, 77406, 77407, 77408, 77409, 77410, 77411, 77412, 77413, 77414, 77415, 77416, 77417, 77418, 77419, 77420, 77421, 77422, 77423, 77424, 77425, 77427, 77428, 77429, 77430, 77431, 77432, 77433, 77434, 77435, 77436, 77437, 77438, 77439, 77440, 77441, 77442, 77443, 77444, 77445, 77446, 77447, 77448, 77449, 77450, 77451, 77452, 77453, 77454, 77455, 77456, 77457, 77458, 77459, 77460, 77461, 77462, 77463, 77464, 77465, 77466, 77467, 77468, 77469, 77470, 77471, 77472, 77473, 77474, 77475, 77476, 77477, 77478, 77479, 77480, 77481, 77482, 77483, 77484, 77485, 77486, 77487, 77488, 77489, 77490, 77491, 77492, 77493, 77494, 77495, 77496, 77497, 77498, 77499, 77520, 77521, 77522, 77523, 77524, 77525, 77600, 77601, 77602, 77603, 77604, 77605, 77606, 77607, 77608, 77609, 77610, 77611, 77612, 77613, 77614, 77615, 77620, 77750, 77751, 77752, 77753, 77754, 77755, 77756, 77757, 77758, 77759, 77760, 77761, 77762, 77763, 77764, 77765, 77766, 77767, 77768, 77769, 77770, 77771, 77772, 77773, 77774, 77775, 77776, 77777, 77778, 77779, 77780, 77781, 77782, 77783, 77784, 77785, 77786, 77787, 77788, 77789, 77790, 77791, 77792, 77793, 77794, 77795, 77796, 77797, 77798, 77799
	ICD-9 or -10	Z51.0, Z92.3, V58.0, T66.XXX*, 990*
Surgery**	CPT	47120, 47122, 47125, 47130, 47370, 47371, 47379, 47380, 47381, 48120, 48140, 48145, 48146, 48150, 48152, 48153, 48154, 48155, 48160, 19120, 19125,

		19126, 19301, 19302, 19303, 19305, 19306, 19307, 44110, 44111, 44140, 44141, 44143, 44144, 44145, 44146, 44147, 44150, 44151, 44155, 44156, 44157, 44158, 44160, 44188, 44204, 44205, 44206, 44207, 44208, 44210, 44211, 44212, 44213, 61518, 61519, 61520, 61521, 61333, 61546, 61548, 61750, 61751, 43610, 43611, 43620, 43621, 43622, 43631, 43632, 43633, 43634, 43117, 43118, 43121, 43122, 43286, 43287, 43288, 43320, 55810, 55812, 55815, 55821, 55831, 55840, 55842, 55845, 55866, 45110, 45111, 45112, 45113, 45114, 45116, 45119, 45126, 45395, 45397, 51550, 51570, 51580, 51555, 51565, 51590, 51575, 51596, 51585, 51595, 51597, 50820
	ICD-9	57.6, 57.7, 57.71, 57.79, 1.52, 1.53, 1.59, 85.44, 85.45, 85.46, 85.47, 85.48, 17.31, 17.32, 17.33, 17.34, 17.35, 17.36, 17.39, 45.71, 45.72, 45.73, 45.74, 45.75, 45.76, 45.79, 45.81, 45.82, 45.83, 42.4, 42.41, 42.42, 42.51, 42.52, 42.53, 42.54, 42.55, 42.56, 42.57, 42.58, 42.59, 42.61, 42.62, 42.63, 42.64, 42.65, 42.66, 42.67, 42.68, 42.69, 42.5, 42.6, 43.5, 43.99, 50.22, 50.3, 32.2, 32.29, 32.3, 32.39, 32.41, 32.49, 32.5, 32.59, 32.6, 52.51, 52.52, 52.53, 52.59, 52.6, 52.7, 57.71, 60.4, 60.5, 60.69, 48.5, 48.51, 48.52, 48.59, 48.61, 48.62, 48.63, 48.64, 48.69, 68.8, 43.42, 43.5, 43.6, 43.7, 43.81, 43.82, 43.89, 43.91, 43.99
<p>* Indicates nonspecific codes. Patients with nonspecific treatment codes were assessed as having the treatment only if they had a cancer diagnosis recorded the same day.</p> <p>** All surgery codes were considered nonspecific.</p>		

Table S3. Phecodes corresponding to the comorbidity classes included in the comorbidity score and their counts in the analytic tested-positive cohort

Comorbidity class	Phecode	Description	Count
Respiratory	464	Acute sinusitis	5,983
Respiratory	465	Acute upper respiratory infections of multiple or unspecified sites	15,019
Respiratory	465.2	Acute pharyngitis	9,713
Respiratory	465.4	Acute laryngitis and tracheitis	480
Respiratory	470	Septal Deviations/Turbinate Hypertrophy	1,312
Respiratory	471	Nasal polyps	370
Respiratory	472	Chronic pharyngitis and nasopharyngitis	2,092
Respiratory	473	Diseases of the larynx and vocal cords	2,339
Respiratory	473.1	Chronic laryngitis	57
Respiratory	473.3	Paralysis/spasm of vocal cords or larynx	374
Respiratory	473.4	Voice disturbance	1,671
Respiratory	474	Acute and chronic tonsillitis	1,710
Respiratory	474.1	Acute tonsillitis	702
Respiratory	474.2	Chronic tonsillitis and adenoiditis	1,220
Respiratory	475	Chronic sinusitis	4,557
Respiratory	475.9	Postnasal drip	1,341
Respiratory	476	Allergic rhinitis	10,867
Respiratory	477	Epistaxis or throat hemorrhage	1,313
Respiratory	478	Throat pain	678
Respiratory	479	Other upper respiratory disease	6,026
Respiratory	480	Pneumonia	6,215
Respiratory	480.1	Bacterial pneumonia	1,309
Respiratory	480.11	Pneumococcal pneumonia	575
Respiratory	480.12	Pseudomonal pneumonia	133
Respiratory	480.13	MRSA pneumonia	166
Respiratory	480.2	Viral pneumonia	1,146
Respiratory	480.3	Pneumonia due to fungus (mycoses)	186
Respiratory	480.5	Bronchopneumonia and lung abscess	128
Respiratory	481	Influenza	2,070
Respiratory	483	Acute bronchitis and bronchiolitis	4,006
Respiratory	495	Asthma	9,292
Respiratory	495.1	Chronic obstructive asthma	303
Respiratory	495.11	Chronic obstructive asthma with exacerbation	73
Respiratory	495.2	Asthma with exacerbation	2,753
Respiratory	496	Chronic airway obstruction	3,121
Respiratory	496.1	Emphysema	995
Respiratory	496.2	Chronic bronchitis	2,532
Respiratory	496.21	Obstructive chronic bronchitis	2,335
Respiratory	496.3	Bronchiectasis	498
Respiratory	497	Bronchitis	2,237
Respiratory	498	Acute bronchospasm	668
Respiratory	499	Cystic fibrosis	160
Respiratory	500	Lung disease due to external agents	350
Respiratory	500.1	Extrinsic allergic alveolitis	74
Respiratory	500.2	Pneumoconiosis	54
Respiratory	501	Pneumonitis due to inhalation of food or vomitus	515
Respiratory	502	Postinflammatory pulmonary fibrosis	795
Respiratory	503	Pulmonary congestion and hypostasis	529
Respiratory	504	Other alveolar and parietoalveolar pneumonopathy	678
Respiratory	504.1	Idiopathic fibrosing alveolitis	284
Respiratory	505	Other pulmonary inflammation or edema	1,136
Respiratory	506	Empyema and pneumothorax	1,204
Respiratory	507	Pleurisy; pleural effusion	2,119
Respiratory	508	Pulmonary collapse; interstitial and compensatory emphysema	1,769
Respiratory	509	Respiratory failure, insufficiency, arrest	4,046
Respiratory	509.1	Respiratory failure	2,932
Respiratory	509.2	Respiratory insufficiency	1,526
Respiratory	509.3	Pulmonary insufficiency or respiratory failure following trauma and surgery	962
Respiratory	509.5	Respiratory arrest	27
Respiratory	509.8	Dependence on respirator [Ventilator] or supplemental oxygen	1,848
Respiratory	510	Other diseases of lung	3,464
Respiratory	510.2	Lung transplant	185
Respiratory	512	Other symptoms of respiratory system	20,641
Respiratory	512.1	Wheezing	1,834
Respiratory	512.2	Painful respiration	3,013
Respiratory	512.3	Abnormal chest sounds	270
Respiratory	512.7	Shortness of breath	11,738
Respiratory	512.8	Cough	13,143
Respiratory	512.9	Other dyspnea	10,036
Respiratory	513	Respiratory abnormalities	13,826
Respiratory	513.3	Hypoventilation	1,059
Respiratory	513.31	Apnea	535
Respiratory	513.32	Orthopnea	262
Respiratory	513.4	Hyperventilation	426
Respiratory	513.8	Disorders of diaphragm	221
Respiratory	514	Abnormal findings examination of lungs	4,260
Respiratory	514.1	Abnormal results of function study of pulmonary system	327
Respiratory	514.2	Solitary pulmonary nodule	1,826
Respiratory	516	Abnormal sputum	876
Respiratory	516.1	Hemoptysis	705
Respiratory	519	Other diseases of respiratory system, not elsewhere classified	5,115
Respiratory	519.1	Tracheostomy complications	95
Respiratory	519.2	Respiratory complications	415
Respiratory	519.8	Other diseases of respiratory system, NEC	2,282
Respiratory	519.9	Symptoms involving respiratory system and other chest symptoms	2,679
Circulatory	414	Other forms of chronic heart disease	2,474
Circulatory	414.2	ASCVD	716

Table S3. Phecodes corresponding to the comorbidity classes included in the comorbidity score and their counts in the analytic tested-positive cohort

Comorbidity class	Phecode	Description	Count
Circulatory	415	Pulmonary heart disease	2,737
Circulatory	415.1	Acute pulmonary heart disease	1,497
Circulatory	415.11	Pulmonary embolism and infarction, acute	1,490
Circulatory	415.2	Chronic pulmonary heart disease	1,513
Circulatory	415.21	Primary pulmonary hypertension	404
Circulatory	416	Cardiomegaly	1,437
Circulatory	418	Nonspecific chest pain	13,438
Circulatory	418.1	Precordial pain	1,200
Circulatory	420	Carditis	1,255
Circulatory	420.1	Myocarditis	120
Circulatory	420.2	Pericarditis	726
Circulatory	420.21	Acute pericarditis	163
Circulatory	420.22	Chronic pericarditis	96
Circulatory	420.3	Endocarditis	522
Circulatory	425	Cardiomyopathy	1,688
Circulatory	425.1	Primary/intrinsic cardiomyopathies	1,594
Circulatory	425.11	Hypertrophic obstructive cardiomyopathy	158
Circulatory	425.12	Other hypertrophic cardiomyopathy	219
Circulatory	425.2	Secondary/extrinsic cardiomyopathies	293
Circulatory	425.8	Other cardiomyopathy	88
Circulatory	426	Cardiac conduction disorders	8,935
Circulatory	426.2	Atrioventricular [AV] block	1,236
Circulatory	426.21	First degree AV block	807
Circulatory	426.22	Mobitz II AV block	46
Circulatory	426.23	Second degree AV block	179
Circulatory	426.24	Atrioventricular block, complete	320
Circulatory	426.25	Other heart block	109
Circulatory	426.3	Bundle branch block	1,619
Circulatory	426.31	Right bundle branch block	1,033
Circulatory	426.32	Left bundle branch block	688
Circulatory	426.4	Anomalous atrioventricular excitation	98
Circulatory	426.7	Abnormal electrocardiogram [ECG] [EKG]	7,821
Circulatory	426.8	Other cardiac conduction disorders	754
Circulatory	426.9	Cardiac pacemaker/device in situ	1,073
Circulatory	426.91	Cardiac pacemaker in situ	665
Circulatory	426.92	Cardiac defibrillator in situ	613
Circulatory	427	Cardiac dysrhythmias	14,422
Circulatory	427.1	Paroxysmal tachycardia, unspecified	2,056
Circulatory	427.11	Paroxysmal supraventricular tachycardia	1,356
Circulatory	427.12	Paroxysmal ventricular tachycardia	999
Circulatory	427.2	Atrial fibrillation and flutter	3,161
Circulatory	427.21	Atrial fibrillation	3,051
Circulatory	427.22	Atrial flutter	1,186
Circulatory	427.3	Other specified cardiac dysrhythmias	6,345
Circulatory	427.4	Cardiac arrest and ventricular fibrillation	439
Circulatory	427.41	Ventricular fibrillation and flutter	189
Circulatory	427.42	Cardiac arrest	319
Circulatory	427.5	Arrhythmia (cardiac) NOS	4,905
Circulatory	427.6	Premature beats	1,912
Circulatory	427.61	Supraventricular premature beats	548
Circulatory	427.7	Tachycardia NOS	5,181
Circulatory	427.8	Sinoatrial node dysfunction (Bradycardia)	565
Circulatory	427.9	Palpitations	5,157
Circulatory	428	Congestive heart failure; nonhypertensive	3,504
Circulatory	428.1	Congestive heart failure (CHF) NOS	2,769
Circulatory	428.2	Heart failure NOS	3,233
Circulatory	428.3	Heart failure with reduced EF [Systolic or combined heart failure]	1,527
Circulatory	428.4	Heart failure with preserved EF [Diastolic heart failure]	1,643
Circulatory	429	Ill-defined descriptions and complications of heart disease	12,866
Circulatory	429.1	Heart transplant/surgery	833
Circulatory	429.2	Abnormal function study of cardiovascular system	6,261
Circulatory	429.3	Symptoms involving cardiovascular system	10,355
Circulatory	429.9	Cardiac complications, not elsewhere classified	331
Circulatory	430	Intracranial hemorrhage	519
Circulatory	430.1	Subarachnoid hemorrhage	181
Circulatory	430.2	Intracerebral hemorrhage	223
Circulatory	430.3	Subdural hemorrhage	183
Circulatory	433	Cerebrovascular disease	3,598
Circulatory	433.1	Occlusion and stenosis of precerebral arteries	1,159
Circulatory	433.11	Occlusion of cerebral arteries, with cerebral infarction	195
Circulatory	433.12	Cerebral atherosclerosis	69
Circulatory	433.2	Occlusion of cerebral arteries	1,856
Circulatory	433.21	Cerebral artery occlusion, with cerebral infarction	1,782
Circulatory	433.3	Cerebral ischemia	1,912
Circulatory	433.31	Transient cerebral ischemia	1,746
Circulatory	433.32	Moyamoya disease	8
Circulatory	433.5	Cerebral aneurysm	309
Circulatory	433.6	Acute, but ill-defined cerebrovascular disease	295
Circulatory	433.8	Late effects of cerebrovascular disease	633
Circulatory	440	Atherosclerosis	1,329
Circulatory	440.1	Atherosclerosis of renal artery	143
Circulatory	440.2	Atherosclerosis of the extremities	736
Circulatory	440.21	Atherosclerosis of native arteries of the extremities with ulceration or gangrene	118
Circulatory	440.22	Atherosclerosis of native arteries of the extremities with intermittent claudication	475
Circulatory	440.9	Atherosclerosis of aorta	437
Circulatory	441	Vascular insufficiency of intestine	320
Circulatory	441.1	Acute vascular insufficiency of intestine	138

Table S3. Phecodes corresponding to the comorbidity classes included in the comorbidity score and their counts in the analytic tested-positive cohort

Comorbidity class	Phecode	Description	Count
Circulatory	441.2	Chronic vascular insufficiency of intestine	103
Circulatory	442	Other aneurysm	1,533
Circulatory	442.1	Aortic aneurysm	1,109
Circulatory	442.11	Abdominal aortic aneurysm	545
Circulatory	442.2	Aneurysm of iliac artery	84
Circulatory	442.3	Aneurysm of artery of lower extremity	80
Circulatory	442.4	Arterial dissection	140
Circulatory	442.8	Aneurysm of other specified artery	230
Circulatory	443	Peripheral vascular disease	2,098
Circulatory	443.1	Raynaud's syndrome	686
Circulatory	443.7	Peripheral angiopathy in diseases classified elsewhere	165
Circulatory	443.8	Other specified peripheral vascular diseases	1,855
Circulatory	443.9	Peripheral vascular disease, unspecified	1,378
Circulatory	444	Arterial embolism and thrombosis	528
Circulatory	444.1	Arterial embolism and thrombosis of lower extremity artery	176
Circulatory	444.2	Embolism and thrombosis of abdominal aorta	71
Circulatory	444.5	Atheroembolism	18
Circulatory	446	Polyarteritis nodosa and allied conditions	467
Circulatory	446.1	Thromboangiitis obliterans	9
Circulatory	446.2	Acute febrile mucocutaneous lymph node syndrome (Kawasaki disease)	22
Circulatory	446.3	Hypersensitivity angiitis	55
Circulatory	446.4	Wegener's granulomatosis	90
Circulatory	446.5	Giant cell arteritis	63
Circulatory	446.6	Polyarteritis nodosa	50
Circulatory	446.7	Takayasu's disease	15
Circulatory	446.8	Thrombotic microangiopathy	35
Circulatory	446.9	Arteritis NOS	282
Circulatory	447	Other disorders of arteries and arterioles	1,761
Circulatory	447.1	Stricture of artery	228
Circulatory	447.7	Aortic ectasia	601
Circulatory	448	Disease of capillaries	692
Circulatory	450	Noninfectious disorders of lymphatic channels	952
Circulatory	451	Phlebitis and thrombophlebitis	548
Circulatory	451.2	Phlebitis and thrombophlebitis of lower extremities	173
Circulatory	452	Other venous embolism and thrombosis	3,318
Circulatory	452.1	Iatrogenic pulmonary embolism and infarction	158
Circulatory	452.2	Deep vein thrombosis [DVT]	1,999
Circulatory	452.8	Postphlebotic syndrome	89
Circulatory	453	Chronic venous hypertension	176
Circulatory	454	Varicose veins	2,088
Circulatory	454.1	Varicose veins of lower extremity	1,762
Circulatory	454.11	Varicose veins of lower extremity, symptomatic	1,122
Circulatory	455	Hemorrhoids	5,061
Circulatory	456	Chronic venous insufficiency [CVI]	2,454
Circulatory	457	Encounter for long-term (current) use of anticoagulants, antithrombotics, aspirin	574
Circulatory	457.2	Encounter for long-term (current) use of antiplatelets/antithrombotics	131
Circulatory	457.3	Encounter for long-term (current) use of aspirin	503
Circulatory	458	Hypotension	3,672
Circulatory	458.1	Orthostatic hypotension	1,163
Circulatory	458.2	Iatrogenic hypotension	683
Circulatory	458.9	Hypotension NOS	3,482
Circulatory	459	Other disorders of circulatory system	5,586
Circulatory	459.1	Hemorrhage NOS	599
Circulatory	459.7	Blood vessel replaced	794
Circulatory	459.9	Circulatory disease NEC	4,910
Diabetes	250.2	Type 2 diabetes	7,372
Kidney	585	Renal failure	6,181
Liver	571	Chronic liver disease and cirrhosis	3,670
Autoimmune	242.1	Graves' disease	394
Autoimmune	250.1	Type 1 diabetes	1,435
Autoimmune	335	Multiple sclerosis	349
Autoimmune	557.1	Celiac disease	433
Autoimmune	694.1	Vitiligo	151
Autoimmune	695.4	Lupus (localized and systemic)	783
Autoimmune	696.4	Psoriasis	1,171
Autoimmune	697	Sarcoidosis	418
Autoimmune	704.1	Alopecia	2,056
Autoimmune	714.1	Rheumatoid arthritis	1,448
Autoimmune	717	Polymyalgia Rheumatica	200

Table S4. Logistic regression odds ratios (95% CI) for COVID-19 outcomes by chemotherapy treatment (without hematologic malignancy patients)

	Outcomes				n	
	Severe COVID	Hospitalized	ICU	Deceased	Cancer	Total
Any cancer						
Unadjusted	3.57 (3.12, 4.09)	3.41 (2.95, 3.93)	2.68 (1.99, 3.61)	4.79 (3.61, 6.35)	8,360	39,312
Unadjusted (Firth)	3.58 (3.12, 4.09)	3.41 (2.95, 3.92)	2.70 (1.99, 3.60)	4.82 (3.61, 6.34)	8,360	39,312
Adjustment 1	2.26 (1.96, 2.60)	2.24 (1.93, 2.59)	1.65 (1.20, 2.21)	2.27 (1.69, 3.02)	8,360	39,312
Adjustment 2	2.27 (1.95, 2.64)	2.27 (1.94, 2.64)	1.58 (1.14, 2.16)	2.20 (1.60, 2.97)	7,578	34,281
Adjustment 3	1.76 (1.51, 2.05)	1.76 (1.50, 2.07)	1.31 (0.94, 1.79)	1.66 (1.20, 2.26)	7,537	33,907

Adjustment 1: Age, race/ethnicity, sex;

Adjustment 2: Adjustment 1 + Disadvantage Index (quartile)

Adjustment 3: Adjustment 2 + comorbidity score.

Bolded point estimates represents statistical significance at the 95% confidence level.

Section 1.1. Interaction analysis of cancer diagnosis and other COVID risk factors

Older age (per 10 years) was associated with higher risk of severe COVID in both cancer [OR (95% CI): 1.29 (1.24, 1.35)] and non-cancer [OR (95% CI): 1.36 (1.32, 1.40)] patients. This association may be stronger for non-cancer patients (p-value for interaction = 0.06). An interaction effect was also found for BMI, with higher BMI increasing odds of severe COVID among those without a cancer diagnosis [OR (95% CI): 1.01 (1.01, 1.02); p-value = 0.01] but a null effect among those with a cancer diagnosis (p-value for interaction <0.01). There was interaction between cancer status and (1) the comorbidity score (OR for severe COVID higher among cancer patients; p-value for interaction = 0.02) and (2) respiratory diseases (OR for severe COVID higher among cancer patients; p-value for interaction = 0.03), and potential interaction with (3) circulatory diseases (OR for severe COVID higher among cancer patients; p-value for interaction = 0.08). The strata-specific odds ratios, their 95% confidence intervals, and the corresponding p-value for interaction for the COVID-19 hospitalization outcome are shown as a forest plot in **Figure S3**. The corresponding plots COVID-19 hospitalization and ICU admission are presented in **Figures S4** and **S5**, which show similar results.

We also identified risk factors that, in conjunction with cancer, were associated with different risk for COVID-19 outcomes in comparison with not having cancer. We found that increasing BMI was associated with increased risk of severe COVID in those without cancer but was not associated in those with cancer. For older patients (≥ 65), having a cancer diagnosis was significantly associated with lower risk of having severe COVID relative to those without cancer. We hypothesize that the behavior of older individuals with cancer diagnoses in their EHR, such as COVID-19 risk mitigation behaviors and increased COVID-19 testing, may play a role in the observed lower severe COVID rates.

Figure S3. Severe COVID-19 among cancer (n = 9,333) and non-cancer patients (n = 26,703) who tested positive and had non-missing covariates. The results were from the model $\text{logit } P(Y_{\text{SevereCOVID}} = 1 | X, \text{Cancer, Covariate}) = \beta_0 + \beta_X X + \beta_{\text{Cancer}} \text{Cancer} + \beta_{\text{Int}} X \times \text{Cancer} + \beta_{\text{Cov}} \text{Covariate}$, where $\text{Covariate} = \text{Age} + \text{Race/Ethnicity} + \text{Sex} + \text{Disadvantage Index (quartile)} + \text{Comorbidity Score}$. Reference groups were age: 18 to 35, sex: female, BMI: 18.5 to 25, race: white/non-Hispanic, smoking status: never. A unit change in the continuous age variable is 10 years. The comorbidity score ranges from 0 to 6 and is the sum of indicators for presence of six categories of preexisting conditions in the electronic health record.

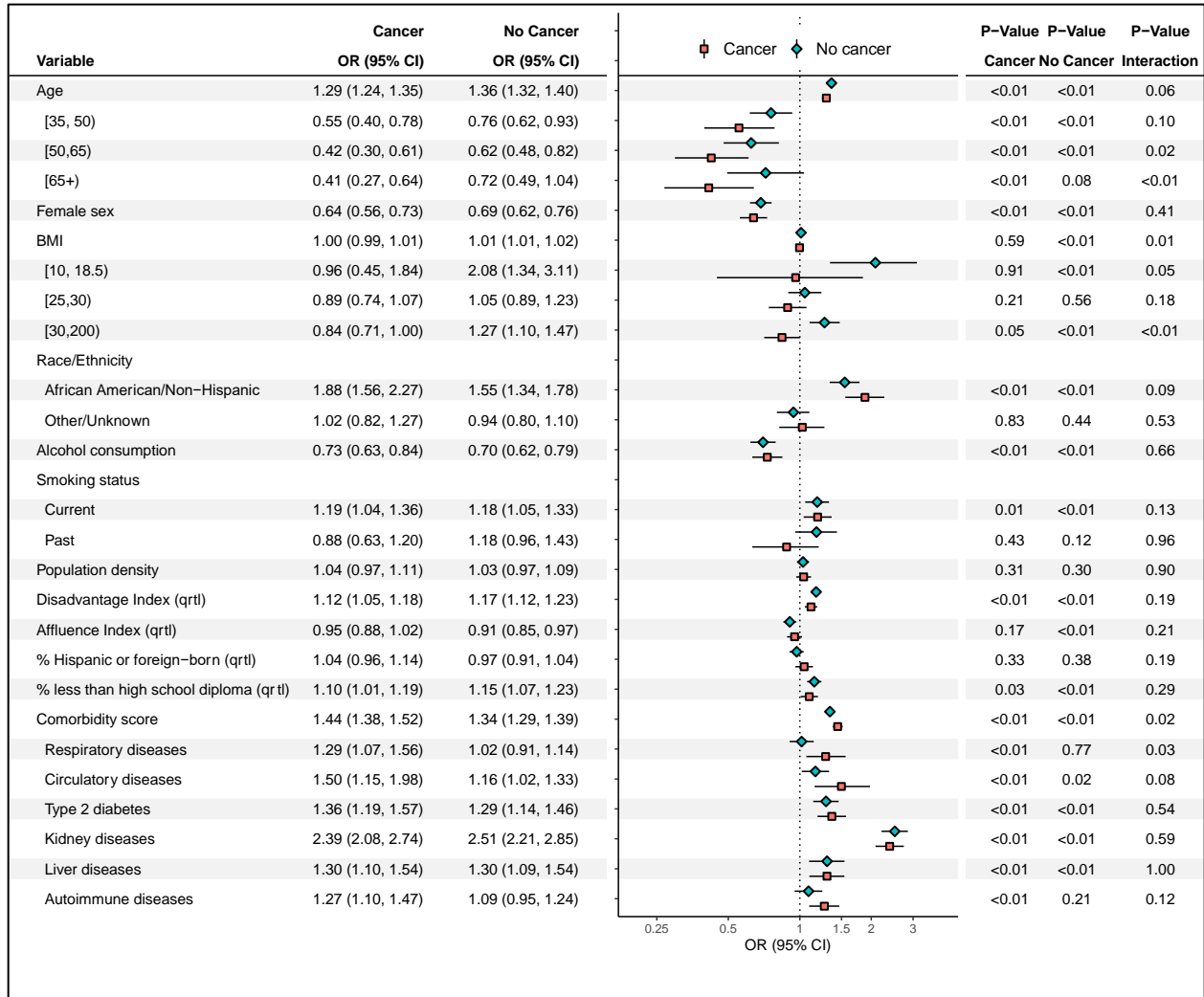


Figure S4. COVID-19 hospitalization among cancer (n = 9,333) and non-cancer patients (n = 26,703) who tested positive and had non-missing covariates. The results were from the model $\text{logit } P(Y_{\text{Hospitalization}} = 1 | X, \text{Cancer}, \text{Covariate}) = \beta_0 + \beta_X X + \beta_{\text{Cancer}} \text{CancerStatus} + \beta_{\text{Int}} X \times \text{CancerStatus} + \beta_{\text{Cov}} \text{Covariate}$, where $\text{Covariate} = \text{Age} + \text{Race/Ethnicity} + \text{Sex} + \text{Disadvantage Index (quartile)} + \text{Comorbidity Score}$. Reference groups were age: 18 to 35, sex: female, BMI: 18.5 to 25, race: white/non-Hispanic, smoking status: never. A unit change in the continuous age variable is 10 years. The comorbidity score ranges from 0 to 6 and is the sum of indicators for presence of six categories of preexisting conditions in the electronic health record.

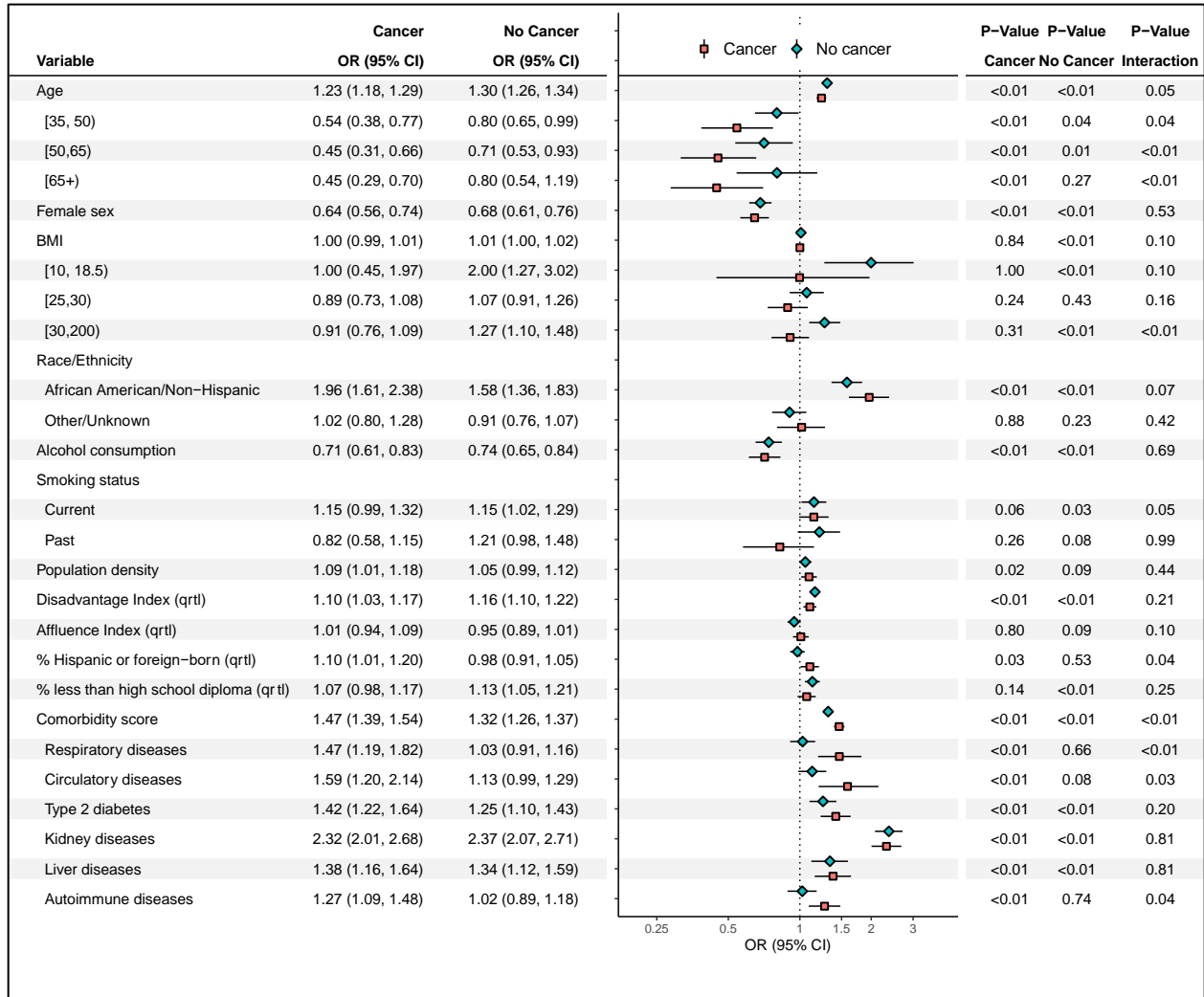
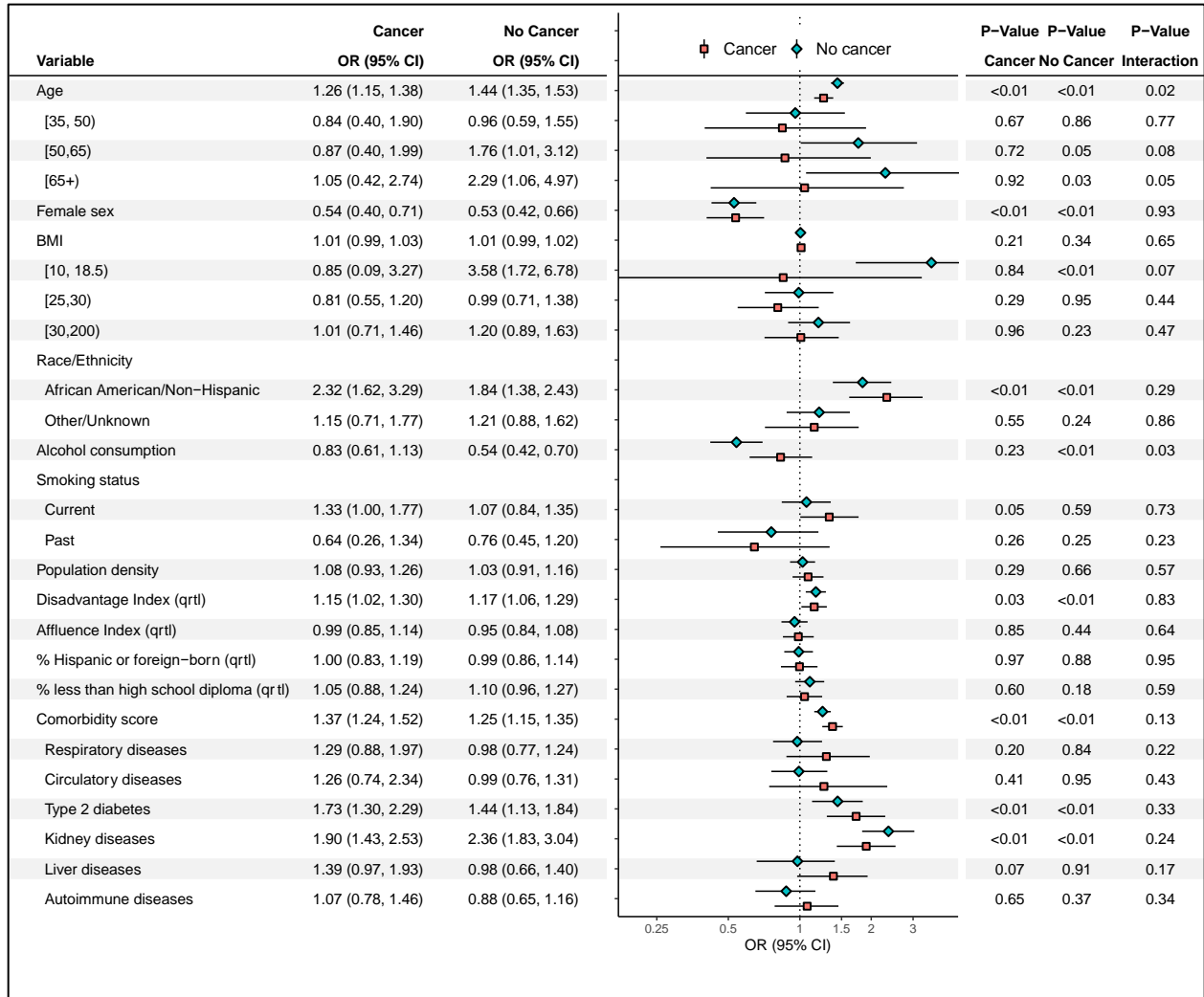


Figure S5. COVID-19 ICU admission among cancer (n = 9,333) and non-cancer patients (n = 26,703) who tested positive and had non-missing covariates. The results were from the model $\text{logit } P(Y_{\text{ICU}} = 1 | X, \text{Cancer}, \text{Covariate}) = \beta_0 + \beta_X X + \beta_{\text{Cancer}} \text{CancerStatus} + \beta_{\text{Int}} X \times \text{CancerStatus} + \beta_{\text{Cov}} \text{Covariate}$, where $\text{Covariate} = \text{Age} + \text{Race/Ethnicity} + \text{Sex} + \text{Disadvantage Index (quartile)} + \text{Comorbidity Score}$. Reference groups were age: 18 to 35, sex: female, BMI: 18.5 to 25, race: white/non-Hispanic, smoking status: never. A unit change in the continuous age variable is 10 years. The comorbidity score ranges from 0 to 6 and is the sum of indicators for presence of six categories of preexisting conditions in the electronic health record.



Section 2. Cancer recency analysis results

Table S5. Logistic regression odds ratios (95% CI) for COVID-19 outcomes by cancer treatment type using restricted electronic health record for cancer recency analysis.

	Outcomes				n	
	Severe COVID	Hospitalized	ICU	Deceased	Cancer/ treatment group	Total
Chemotherapy						
Unadjusted	4.44 (3.82, 5.15)	4.08 (3.49, 4.77)	3.55 (2.60, 4.83)	6.45 (4.82, 8.63)	1,158	41,218
Unadjusted (Firth)	4.44 (3.82, 5.15)	4.09 (3.48, 4.77)	3.58 (2.60, 4.82)	6.49 (4.81, 8.61)	1,158	41,218
Adjustment 1	2.88 (2.46, 3.35)	2.74 (2.32, 3.22)	2.20 (1.58, 2.98)	3.14 (2.31, 4.20)	1,158	41,218
Adjustment 2	2.94 (2.49, 3.45)	2.84 (2.39, 3.36)	2.15 (1.53, 2.96)	2.91 (2.09, 3.99)	1,014	36,036
Adjustment 3	2.41 (2.04, 2.84)	2.33 (1.96, 2.77)	1.81 (1.28, 2.50)	2.33 (1.66, 3.20)	1,014	36,036
Radiation only						
Unadjusted	4.00 (2.81, 5.70)	3.86 (2.67, 5.58)	5.79 (3.27, 10.26)	7.08 (3.81, 13.17)	201	41,218
Unadjusted (Firth)	4.04 (2.81, 5.68)	3.90 (2.67, 5.55)	5.99 (3.26, 10.12)	7.37 (3.79, 12.94)	201	41,218
Adjustment 1	2.30 (1.59, 3.26)	2.34 (1.58, 3.35)	3.30 (1.78, 5.64)	3.11 (1.59, 5.55)	201	41,218
Adjustment 2	2.03 (1.33, 2.99)	2.16 (1.40, 3.21)	3.15 (1.61, 5.59)	2.37 (1.02, 4.72)	176	36,036
Adjustment 3	1.74 (1.14, 2.59)	1.86 (1.20, 2.79)	2.77 (1.41, 4.93)	1.91 (0.82, 3.84)	176	36,036
Surgery only						
Unadjusted	2.52 (0.98, 6.46)	2.77 (1.08, 7.12)	2.26 (0.31, 16.55)	-	38	41,218
Unadjusted (Firth)	2.73 (0.98, 6.21)	3.01 (1.08, 6.84)	3.35 (0.38, 12.55)	1.59 (0.01, 11.17)	38	41,218
Adjustment 1	1.70 (0.60, 3.97)	1.96 (0.70, 4.58)	2.04 (0.23, 7.87)	0.73 (0.01, 5.40)	38	41,218
Adjustment 2	1.66 (0.59, 3.92)	1.92 (0.68, 4.52)	1.83 (0.20, 7.13)	0.68 (0.01, 5.05)	37	36,036
Adjustment 3	1.22 (0.42, 2.95)	1.43 (0.50, 3.43)	1.39 (0.15, 5.48)	0.45 (0.00, 3.44)	37	35,036

Adjustment 1: Age, race/ethnicity, sex;

Adjustment 2: Adjustment 1 + Disadvantage Index (quartile)

Adjustment 3: Adjustment 2 + comorbidity score.

Bolded point estimates represents statistical significance at the 95% confidence level.

Figure S6. Severe COVID-19 among recent cancer (within three years of positive COVID-19 test; n = 4,260) and non-cancer patients (n = 31,776) who tested positive and have non-missing covariates. The results were from the model $\text{logit } P(Y_{\text{SevereCOVID}} = 1 | X, \text{Cancer}, \text{Covariate}) = \beta_0 + \beta_X X + \beta_{\text{Cancer}} \text{Cancer} + \beta_{\text{Int}} X \times \text{Cancer} + \beta_{\text{Cov}} \text{Covariate}$, where $\text{Covariate} = \text{Age} + \text{Race/Ethnicity} + \text{Sex} + \text{Disadvantage Index (quartile)} + \text{Comorbidity Score}$. Reference groups were age: 18 to 35, sex: female, BMI: 18.5 to 25, race: white/non-Hispanic, smoking status: never. A unit change in the continuous age variable is 10 years. The comorbidity score ranges from 0 to 6 and is the sum of indicators for presence of six categories of preexisting conditions in the electronic health record.

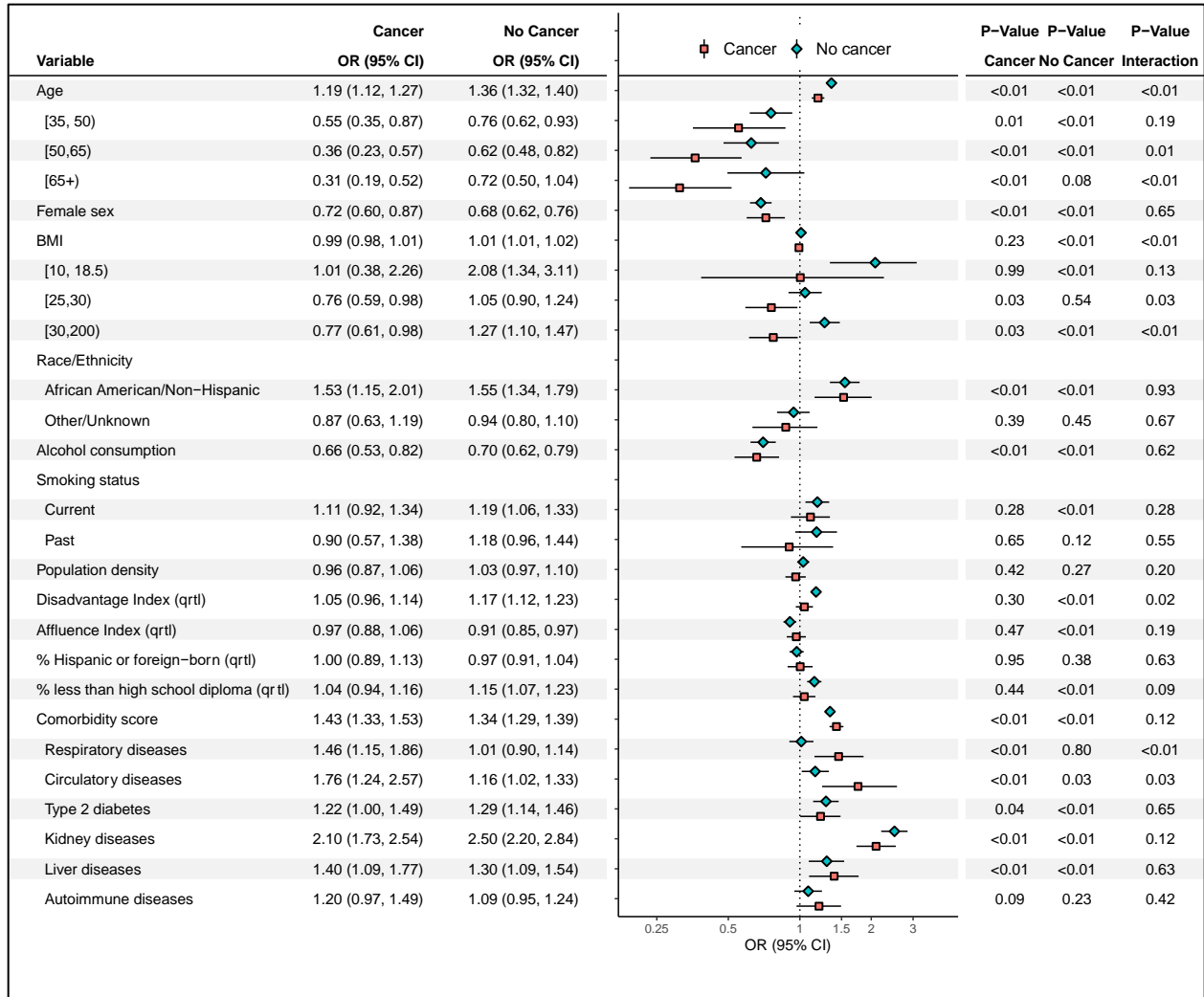


Figure S7. COVID-19 hospitalization among recent cancer (within three years of positive COVID-19 test; n = 4,260) and non-cancer patients (n = 31,776) who tested positive and have non-missing covariates. The results were from the model $\text{logit } P(Y_{\text{Hospitalization}} = 1 | X, \text{Cancer}, \text{Covariate}) = \beta_0 + \beta_x X + \beta_{\text{Cancer}} \text{Cancer} + \beta_{\text{Int}} X \times \text{Cancer} + \beta_{\text{Cov}} \text{Covariate}$, where $\text{Covariate} = \text{Age} + \text{Race/Ethnicity} + \text{Sex} + \text{Disadvantage Index (quartile)} + \text{Comorbidity Score}$. Reference groups were age: 18 to 35, sex: female, BMI: 18.5 to 25, race: white/non-Hispanic, smoking status: never. A unit change in the continuous age variable is 10 years. The comorbidity score ranges from 0 to 6 and is the sum of indicators for presence of six categories of preexisting conditions in the electronic health record.

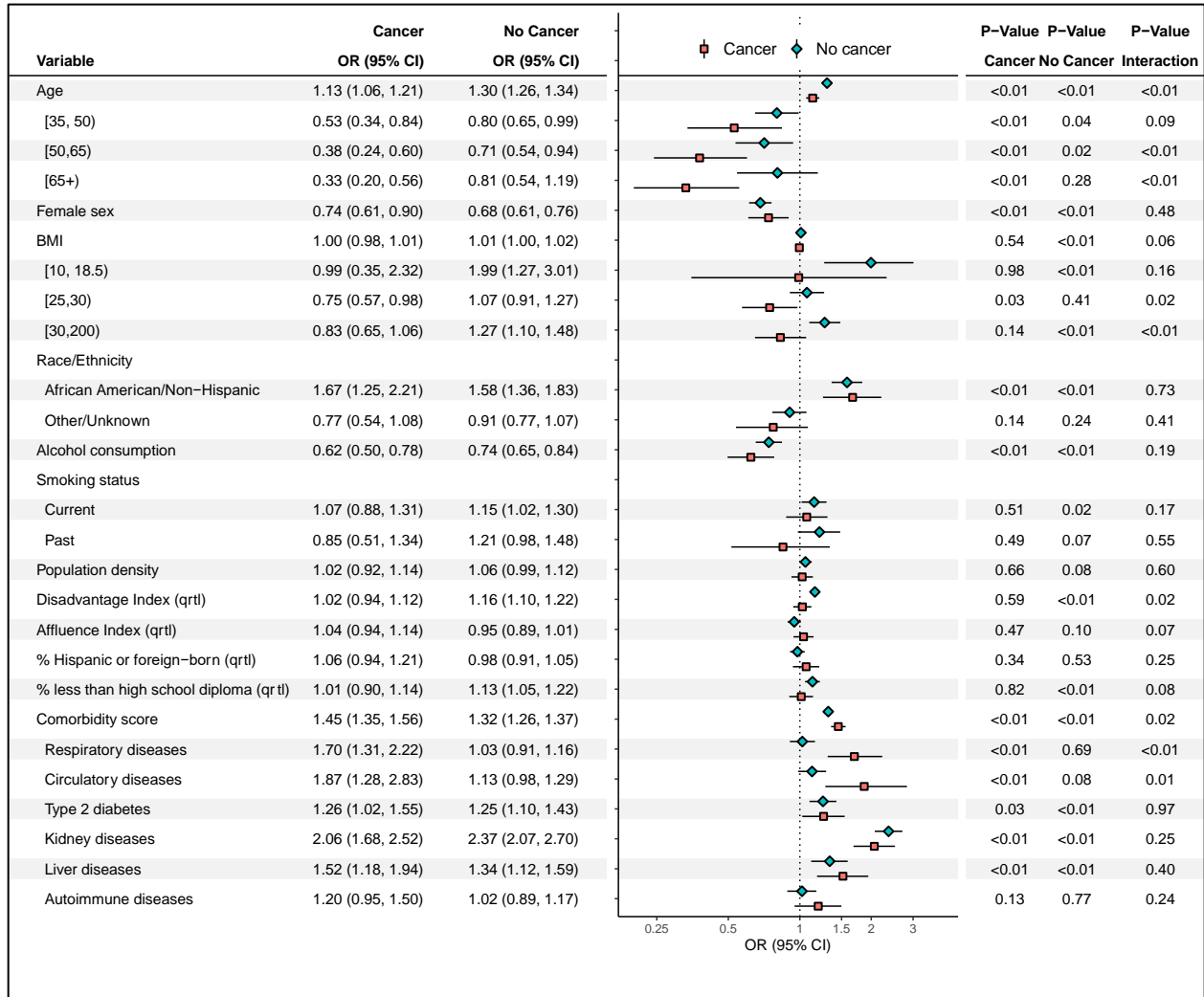


Figure S8. COVID-19 ICU admission among recent cancer (within three years of positive COVID-19 test; n = 4,260) and non-cancer patients (n = 31,776) who tested positive and have non-missing covariates. The results were from the model $\text{logit } P(Y_{\text{ICU}} = 1 | X, \text{Cancer}, \text{Covariate}) = \beta_0 + \beta_X X + \beta_{\text{Cancer}} \text{Cancer} + \beta_{\text{Int}} X \times \text{Cancer} + \beta_{\text{Cov}} \text{Covariate}$, where $\text{Covariate} = \text{Age} + \text{Race/Ethnicity} + \text{Sex} + \text{Disadvantage Index (quartile)} + \text{Comorbidity Score}$. Reference groups were age: 18 to 35, sex: female, BMI: 18.5 to 25, race: white/non-Hispanic, smoking status: never. A unit change in the continuous age variable is 10 years. The comorbidity score ranges from 0 to 6 and is the sum of indicators for presence of six categories of preexisting conditions in the electronic health record.

