

---

# Supplementary document

*Drouard et al.*

March 2022

---

–S1–

Phenotypic correlations and adjustment of  
growth factors by covariates

# 1 Forewords

In parallel with the study of BMI and alcohol consumption trajectories for which the associated measures were not adjusted, a sensitivity analysis incorporating covariates was performed. The objectives were to 1) compare the effect of covariates on phenotypic correlations with those obtained in the study, 2) further refine estimates of growth factor relationships not explained by multiple covariates.

## 2 Materials & Methods

### 2.1 Materials

A panel of covariates closely related to BMI and alcohol consumption was selected: some were time-varying such as smoking status (categories: current smoker/ former smoker/ occasional smoker/ never smoked/ uncertain) (1), age and marital status (categories: cohabiting *i.e.* married, remarried or cohabiting/ not cohabiting *i.e.* single, divorced or widowed) while education level expressed in years of study (categories: 6years or less/ from 7 to 11 years/ high school/ university/ others) (2-3) was used as a time-independent variable. The age distribution is presented in Table 1 of the paper. The education level, independent of time, is presented in Table S1. The headcounts of each class for the time-varying covariates are presented in Table S2.

**Table S1:** Description of education level in men and women. M: Men. W: Women. %M: proportion of men to total men (sample size). %W: proportion of women to total women (sample size). %T: proportion of participants (men and women) to total participants (sample size).

Class	Men (%M)	Women (%W)	Total (%T)
6 years or less	449 (23.7%)	630 (24.6%)	1079 (24.2%)
from 7 to 11 years	956 (50.4%)	1 282 (50.0%)	2 238 (50.2%)
high school	213 (11.2%)	454 (17.7%)	667 (15.0%)
university	174 (9.2%)	166 (6.5%)	340 (7.6%)
others	104 (5.5%)	33 (1.3%)	137 (3.1%)
sample size	1896 (-)	2565 (-)	4461 (-)

### 2.2 Methods

The categorical covariates with more than two categories ( $m$ ) were transformed into dummy variables, *i.e.*  $m - 1$  binary variables, to comply with the requirements of the R package used in the LGCM (*lavaan*). The time-varying covariates smoker status and marital status were used to control for measures of BMI and alcohol consumption. Education level was used to control for growth factors, *i.e.*, intercepts and slopes. This design is referred to below as the fully-adjusted design. Growth factors were provided with 95% confidence intervals.

**Table S2:** Description of time-varying covariates across the four waves of questionnaires.

Questionnaire	smoking status		marital status	
	Men	Women	Men	Women
1975	current: 725 occasional: 88 never smoker: 713 former: 366 uncertain: 4	current: 791 occasional: 74 never smoker: 1 331 former: 367 uncertain: 2	cohabiting: 752 not cohabiting: 1 144	cohabiting: 1 151 not cohabiting: 1 414
1981	current: 660 occasional: 84 never smoker: 673 former: 472 uncertain: 7	current: 615 occasional: 66 never smoker: 1 299 former : 553 uncertain: 32	cohabiting: 1 305 not cohabiting: 591	cohabiting: 1 871 not cohabiting: 694
1990	current: 581 occasional: 80 never smoker: 673 former: 538 uncertain: 24	current: 604 occasional: 86 never smoker: 1 281 former: 572 uncertain: 22	cohabiting: 1548 not cohabiting: 348	cohabiting: 2 013 not cohabiting: 552
2011	current: 340 occasional: 123 never smoker: 692 former: 714 uncertain: 27	current: 414 occasional: 158 never smoker: 1 329 former: 649 uncertain: 15	cohabiting: 1487 not cohabiting: 409	cohabiting: 1 738 not cohabiting: 827

### 3 Results

The results obtained once fully-adjusted are presented in Table S3. The phenotypic correlations are close to those of the main study, despite one important exception: the BMI and alcohol consumption intercepts are no longer correlated in women once adjusted by covariates.

**Table S3:** Phenotypic correlations of growth factors fully-adjusted by covariates smoking status, marital status, and education level. M: Men. W: Women.

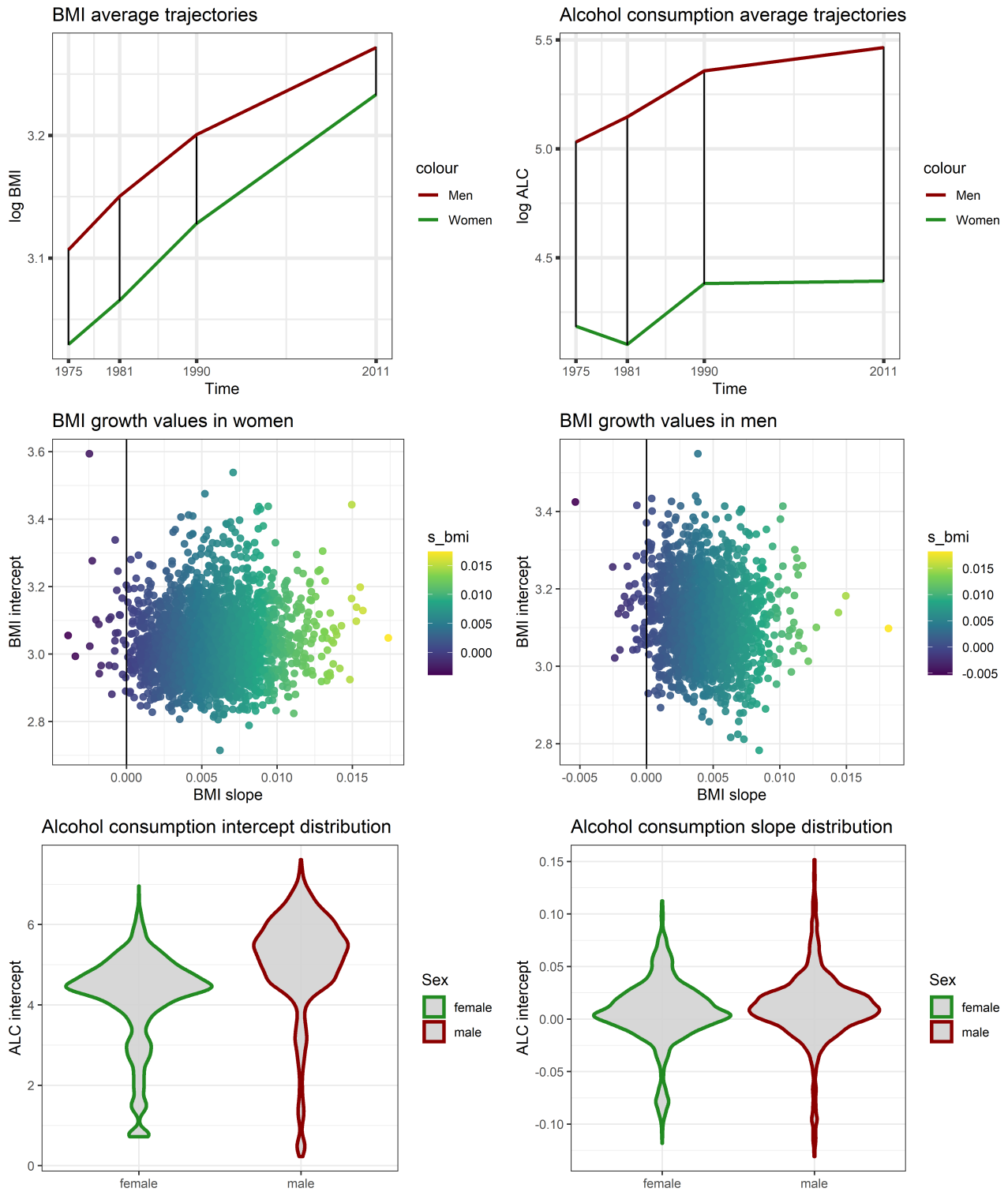
		Phenotypic correlations			
		Intercept BMI	Slope BMI	Intercept Alc	Slope Alc
M	Intercept BMI	1			
	Slope BMI	-0.10 (-0.14, -0.05)	1		
	Intercept Alc	0.13 (0.08, 0.17)	-0.05 (-0.09, -0.00)	1	
	Slope Alc	-0.18 (-0.23, -0.14)	0.17 (0.13, 0.22)	-0.52 (-0.55, -0.49)	1
W	Intercept BMI	1			
	Slope BMI	0.09 (0.05, 0.12)	1		
	Intercept Alc	-0.03 (-0.07, 0.01)	-0.05 (-0.09, -0.01)	1	
	Slope Alc	-0.09 (-0.13, -0.06)	-0.02 (-0.05, 0.01)	-0.31 (-0.34, -0.27)	1

### 4 References

1. Kaprio J, Koskenvuo M. A prospective study of psychological and socioeconomic characteristics, health behavior and morbidity in cigarette smokers prior to quitting compared to persistent smokers and non-smokers. *J Clin Epidemiol.* 1988;41:139-50.
2. Laurence J Howe, Humaira Rasheed, Paul R Jones, Dorret I Boomsma, David M Evans, Alexandros Giannelis et al. Educational attainment, health outcomes and mortality: a within-sibship Mendelian randomization study. *medRxiv.* 2022 Jan; doi: <https://doi.org/10.1101/2022.01.11.22268884>
3. Silventoinen K, Sarlio-Lähtenkorva S, Koskenvuo M, Lahelma E, Kaprio J. Effect of environmental and genetic factors on education-associated disparities in weight and weight gain: a study of Finnish adult twins. *Am J Clin Nutr.* 2004;80:815-22.

–S2–

Population-wide trajectories and distribution  
of growth values



**Figure S1:** Population-wide average trajectories of log BMI and log alcohol consumption over the entire period (above), growth values of BMI growth factors (middle), and distribution of growth values for alcohol consumption (below).