

1 **Time series cross-correlation between home range and number of infected people during the**
2 **medium-term of the COVID-19 pandemic in a suburban city**

3

4 (Short Title) **Cross-correlation between home range and number of COVID-19 infected people**

5

6 Haruka Kato*, Atsushi Takizawa

7

8 Department of Housing and Environmental Design, Graduate School of Human Life Science, Osaka Metropolitan

9 University, Osaka, Osaka, Japan

10

11 * **Corresponding author**

12 Email: haruka-kato@omu.ac.jp (HK)

13

14 **Abstract**

15 Control of human mobility is among the most effective measures to prevent the spread of coronavirus disease 2019
16 (COVID-19). This study aims to clarify the correlation between home range and the number of people infected with SARS-
17 CoV-2 during the medium-term of the COVID-19 pandemic in Ibaraki City. Home ranges are analyzed by the Minimum
18 Convex Polygon method using mobile phone GPS location history data. We analyzed the time series cross-correlation
19 between home range lengths and the number of infected people. Results reveal a slight positive correlation between home
20 range and the number of infected people after one week during the medium-term of the COVID-19 pandemic. Regarding
21 home range length, the cross-correlation coefficient is 0.4030 even at a lag level of six weeks, which has the most significant
22 coefficient. Thus, a decrease in home range is only one of the indirect factors contributing toward a reduction in the number
23 of infected people. This study makes a significant contribution to the literature by evaluating key public health challenges
24 from the perspective of controlling the spread of the COVID-19 infection. Its findings have implications for policy makers,
25 practitioners, and urban scientists seeking to promote urban sustainability.

26

27 **Introduction**

28 **Background**

29 The coronavirus disease 2019 (COVID-19) pandemic has drastically changed our daily lives. The rapid increase in
30 the number of infected people risks causing a breakdown of the medical system. Control of human mobility is considered
31 one of the most effective measures to prevent the rapid spread of COVID-19 [1]. For example, in the Osaka metropolitan
32 area, states of emergency have been declared four times since January 2020 [2], with more substantial restrictions imposed
33 on the activities of people living in areas closer to the city center [3]. The Subcommittee on Novel Coronavirus Disease
34 Control in Japan requested citizens to reduce human mobility by 50% during this time [4]. However, the imposition of
35 emergency restrictions had significant negative impacts on the daily lives of citizens. For example, excessive restrictions
36 caused a deterioration of mental health [5]. As vaccination progresses, we need to consider more effective measures to
37 control the spread of the infection.

38 The research question of this study is as follows: Does the control of home range affect a reduction in the number of
39 infected people during the medium-term of the COVID-19 pandemic? In other words, this study verifies the possibility of
40 predicting the number of infected people based on the control of human mobility. In particular, it is difficult to predict the

41 number of infected people in suburban cities because of their high human mobility. Therefore, this study focuses on the
42 aspect of home range in human mobility. Home range is defined as the areas that individuals traverse in the course of their
43 daily activities, such as working and shopping [6]. Home range is an essential indicator for policymakers to assess and
44 facilitate the achievement of the daily mobility activities of residents. For example, the “Location Optimization Plan” [7]
45 is a policy that aims to maintain the home range around transit stations. Understanding the time series cross-correlation
46 between home range and the number of infected people would support policymakers to develop policies for controlling the
47 spread of the COVID-19 infection.

48 Purpose

49 This study aims to clarify the time series cross-correlation between home range and the number of people infected
50 with SARS-CoV-2 during the medium-term of the COVID-19 pandemic in a suburban city. Home ranges were analyzed
51 by the Minimum Convex Polygon (MCP) method using mobile phone GPS location history (LH) data. LH data includes
52 location history data collected from individual devices, unlike area-based data such as Google mobility reports [8]. A
53 timeseries analysis was conducted using panel data of every Wednesday from April 2020 to July 2021, a time frame where
54 four waves of the pandemic were witnessed in Japan. This study analyzed the time series cross-correlation between the
55 home range lengths and the number of infected people.

56 The case study research was conducted in Ibaraki City, which is a typical suburban city in the Osaka metropolitan
57 area. Fig 1 shows the location of Ibaraki City, which has a population of approximately 280,000, and an area of 10 km east-
58 west and 17 km north-south [9]. Due to the city’s extensive train network, residents can commute in about 30 min to Osaka
59 City or Kyoto City. Fig 1 shows the distance from the central area of Ibaraki City, where the Ibaraki City Government Hall
60 is located. Osaka Station, located in the central area of Osaka, is 15 km away from the central area of Ibaraki City. This
61 distance helps us understand the home range extent.

62 In Ibaraki City, home range decreased by approximately 50% during the first state of emergency [10]. In addition,
63 dense clusters of people were formed in the parks as well as in the stations [11]. The frequency of walking and bicycle trips
64 increased [12]. These studies suggest that the home range had decreased to a neighborhood scale due to the restrictions
65 imposed during the COVID-19 pandemic in Ibaraki City.

66

67 **Fig 1. Locations of Osaka Prefecture and Ibaraki City.** The thin lines indicate the location of Osaka Prefecture, and the
68 thick lines indicate the location of Ibaraki City. The red point is the central area of Ibaraki City, where the Ibaraki City

69 Government Hall is located. The red dotted circles indicate the distance from the center of Ibaraki City. The distances are
70 5 km, 10 km, 15 km, and 20 km.

71

72 **Literature review**

73 Many studies on human mobility use mobile phone data to estimate the number of people infected with SARS-CoV-
74 2. In particular, many studies focused on Wuhan, where the first infected person was identified. In the early stages of the
75 pandemic, the spatial distribution of the number of infected people was found to explain the movement of the population
76 from Wuhan between January 1 and January 24, 2020 [13]. After January 24, 2020, findings suggested that the lockdown
77 reduced the number of COVID-19 cases in Wuhan by limiting human mobility within the city [14]. Based on these results,
78 simulations to determine the feasibility of measures for the successful control and containment of the COVID-19 pandemic
79 showed the necessity of restricting human mobility by 20%-40%, using the case of Shenzhen in China [15]. In the United
80 States, human mobility was severely restricted during the early stages of the pandemic [16]. Using mobile phone data
81 across the United States from January 1 to April 20, 2020, it was found that COVID-19 transmission correlated strongly
82 with mobility patterns [17]. In addition, based on mobile phone data from March 1 to June 9, 2020, a positive correlation
83 was found between the number of infected people and mobility inflow at the country level in the United States [18]. Further,
84 in the European context, the spread of COVID-19 was positively correlated with the number of people staying in each area
85 and with human mobility between March 1 to June 6, 2020, at lag levels of one, two, and three weeks [19]. This could be
86 attributed to the fact that in Europe, lockdowns generally affect long-distance travel behavior [19]. In addition, between
87 January 1 and April 15, 2020, it was found that the estimated adequate reproduction number of COVID-19 correlated
88 strongly with human mobility (or social contact) in Tokyo, Japan [20]. The changes in human mobility pertaining to
89 nightlife spaces were more significantly associated with the number of COVID-19 cases [21]. These studies of the early
90 stages of the pandemic indicate that the number of infected people correlates with human mobility.

91 The novelty of this study is to analyze the medium-term relationship between the number of infected people and home
92 range. In Japan, the state of emergency was called a “soft lockdown” [22] because the Japanese government did not restrict
93 the activities of individuals [23]. Therefore, most citizens could at least go out in a limited capacity even under the state of
94 emergency. Thus, while multiple emergency declarations were in effect, the home range did not change significantly, but
95 the number of infected people decreased steadily. This suggests that factors other than home range might influence the
96 spread of the infection. This study will allow policymakers to develop policies for controlling the infection during the
97 COVID-19 pandemic in the medium to long term.

98

99 **Materials and methods**

100 **Location History Data**

101 The study used LH data collected by Agoop Corporation. Agoop Corporation collected the LH data by obtaining
102 consent from users, who contracted with a specific mobile phone carrier company or installed specific applications [24].
103 All participants were provided with information regarding the type of data collected, purpose of use and provision to third
104 parties, and a privacy policy [25]. Agoop Corporation provides anonymized LH data for research purposes. Due to the
105 availability of high-quality data in a Japanese context, many studies utilized LH data relating to the spread of COVID-19
106 [10–12]. This research protocol was approved by the ethics committee of the Graduate School of Life Science, Osaka City
107 University (No.21-40). Additionally, all methods were carried out in accordance with “Guidelines for the Use of Device
108 Location Data,” a common regulation for location data analysis in Japan [26]. The guideline prohibits using GPS data for
109 any purpose that involves identifying individual users to protect the privacy of users' GPS location history.

110 Depending on the mobile phone type, the LH data were collected in the form of logs approximately every 15 min,
111 and the LH data were obtained from mobile phones with users' consent. In Ibaraki City, the number of logs was
112 approximately 1,600,000 per day, and the number of users was approximately 12,000, indicating that 5% of the residents
113 of Ibaraki City was adequate for analyzing the home range of residents.

114 The variables in the LH data used in this study were user ID, year, month, day, hour, minutes, and latitude and
115 longitude. The user IDs are anonymized 96-digit alphanumeric codes, the permanent ID assigned to each device, and enable
116 panel data analysis.

117 **Time series cross-correlation**

118 This study used a time series analysis method to analyze the cross-correlation between home range length and the
119 number of infected people. The time-series cross-correlation allows us to understand the similarity of data in a time series
120 and the lag of the period. In this study, the lag was set to eight weeks, considering that the duration between the date of
121 exposure and onset of symptoms is usually a few weeks [27].

122 The analysis period was from April 2020 to July 2021, during which Japan experienced four waves, and a state of
123 emergency was imposed four times in Ibaraki City. On April 7, 2020, when a state of emergency was declared in all
124 prefectures, the Japanese government requested people to stay at home. Following the end of this state of emergency, the

125 Japanese government attempted to recover the economy through various measures such as the “Go-To Travel” campaign
126 for the hotel and restaurant industries [28]. However, by the winter of 2020, the number of infected people had gradually
127 increased [29]. A second state of emergency was subsequently declared from January 14 to February 28, 2021. The Japanese
128 government also developed priority preventive measures before the next emergency declaration [2]. These priority
129 preventive measures were in effect from April 5 to June 24, 2021, and a third state of emergency was declared from April
130 25 to June 20, 2021. A second set of priority preventive measures was introduced from June 21 to August 1, 2021, and a
131 fourth state of emergency was declared from August 2 to September 30, 2021. While vaccination for healthcare workers
132 began in February 2021 [2], vaccination for older people and adults in Ibaraki City began in May 2021. This study focuses
133 on the period between April 2020 and July 2021, prior to the fourth emergency declaration, shortly after the beginning of
134 the vaccination campaign.

135 **Home range length**

136 This study followed the method of the authors’ previous study [10]. Home range length was analyzed using the MCP
137 method, which analyzes zones that connect the outermost observation points [30]. The advantage of this method is its
138 simplicity and intuitive use.

139 Using the MCP method, this study analyzed two types of home range lengths (HR-lengths): HR-length (Farthest
140 Distance) and HR-length (Total Travel Distance). HR-length (Farthest Distance) is the distance to the farthest point moved
141 from the home. The HR-length (Farthest Distance) allows us to understand the extent of the area traveled. HR-length (Total
142 Travel Distance) is the total distance covered every day in the time period under consideration. Since the data are acquired
143 every 15 min, the actual HR-length (Total Travel Distance) cannot be calculated. However, the HR-length (Total Travel
144 Distance) allows us to estimate the total travel distance. The HR-length (Total Travel Distance) was used as an indicator in
145 a previous study [20].

146 The analysis process is summarized in Fig 2. Changes in HR-length (Farthest Distance) and HR-length (Total Travel
147 Distance) during the COVID-19 pandemic were analyzed. In addition, these two HR-lengths were analyzed the cross-
148 correlation with the number of people infected.

149 The study analyzed LH data in Ibaraki City. However, this data included the logs of people who only passed through
150 Ibaraki City, such as people commuting from Tokyo to Osaka by express. Therefore, to isolate the data of people living in
151 Ibaraki City, the study extracted user IDs of the first log located in Ibaraki City after 0:00 h of every day. The study then
152 analyzed the user ID data that appeared for more than two days in the analyzed period. The intent of the study was to

153 analyze the user IDs of individuals living in Ibaraki City, not those just passing through it. With respect to the LH data of
154 the user ID, this study analyzed the home range from 0:00 to 23:59 h.

155 This study used LH data from every Wednesday and analyzed the change in home range based on this data from every
156 Wednesday, considering the home range changes that occurred between weekdays and holidays [10]. On weekdays, people
157 are involved in steady-state activities such as work, which is suitable for analyzing the impact of the COVID-19 pandemic.
158 Wednesday was chosen as the most appropriate day of the week to analyze the impact of the COVID-19 pandemic for a
159 number of reasons. Wednesday is the weekday with the fewest holidays from April 2020 to July 2020: only May 6, 2020,
160 and May 5, 2021, were holidays. Furthermore, December 30, 2020, marked the beginning of the year-end vacation.
161 Moreover, on December 30, many people tend to be off work and school during the year-end vacations.

162

163 **Fig 2. Analysis process to analyze the home range.** The upper figure is a 3D spatiotemporal map, and the lower figure is
164 2D. In process 1, the personal space-time paths between 0:00 to 23:59 h were drawn. In process 2, the home range distance
165 for each mobile phone user is calculated from the latitude and longitude difference between the starting home point and
166 the farthest point moved from the home after 0:00 h. In process 3, the distance of the mobile phone user is averaged to
167 calculate the HR-length (Farthest Distance) and HR-length (Total Travel Distance) of every day. The space-time paths are
168 the imaginary paths of 50 people.

169

170 **Number of infected people**

171 This study analyzed the number of people infected with SARS-CoV-2 in Ibaraki City. Data published on the webpage
172 of the Ibaraki City Government was used for the purpose of the study [31]. The number of people infected was calculated
173 as the total number of people infected each week from Monday to Sunday. Since many hospitals are closed on Sundays,
174 this calculation method was deemed appropriate for use in the Japanese context.

175

176 **Results**

177 **Change of home range length**

178 In Section 3.1, Fig 3 shows the box-plot diagrams of weekly changes in HR-length (Farthest Distance) and HR-length
179 (Total Travel Distance) from April 2020 to July 2021; Fig 4 shows the bar-graphs of monthly changes in HR-length

180 (Farthest Distance) and HR-length (Total Travel Distance) from April 2020 to July 2021. In both figures, weekly and
181 monthly data followed similar trends. In particular, the home range showed a significant decrease every week from April
182 to May 2020, when the first state of emergency was declared. This result was verified by previous research [10–12].
183 However, since June 2020, the home range has gradually increased. It was found that the HR-length decreased significantly
184 only from April to May 2020, when the first emergency declaration was issued, but thereafter, travel to Ibaraki City and
185 Osaka City did not change significantly.

186 Figs 3 and 4 depict that there are no significant changes except on December 31, 2020, and May 5, 2021, which were
187 national holidays, and July 21, 2021, right before the Tokyo Olympics 2020 were held. The home range was found to have
188 decreased during those periods when priority preventive measures were in effect, while the home range tended to increase
189 during emergency periods. The results also suggest that citizens had changed their mobility behavior before the government
190 declared a state of emergency.

191

192

193 **Fig 3. Weekly change of HR-length.** The upper graph shows the weekly changes in HR-length (Farthest Distance). The
194 lower graph shows the weekly changes in HR-length (Total Travel Distance). Green periods are during the state of
195 emergency, and yellow-green periods are during the priority prevention measures. The box-plot diagrams do not depict the
196 outliers.

197

198

199 **Fig 4. Monthly Change of HR-length.** The upper graph shows the monthly changes in HR-length (Farthest Distance).
200 The lower graph shows the HR-length (Total Travel Distance). The figures shows the average and 95% intervals of the
201 HR-length in a time series. Besides, the Wilcoxon rank-sum test indicates significant differences in the average values for
202 each month. Green periods are during the state of emergency, and yellow-green periods are during the priority prevention
203 measures.

204

205 **Change in the number of infected people**

206 Fig 5 illustrates a bar graph of weekly changes in the number of people infected with SARS-CoV-2 in Ibaraki City
207 between March 29, 2020, and July 31, 2021. Fig 5 shows that Ibaraki City has experienced four increases and decreases in
208 the number of infected people. The first wave lasted from April to May 2020, the second from July to September 2020, the

209 third from December 2020 to February 2021, and the fourth from March to June 2021. The fifth wave began in July 2021.
210 Each wave lasted progressively longer than the preceding one.

211 States of emergency were declared for the first, third, and fourth waves. Following each declaration of emergency,
212 the number of infected people decreased significantly. In particular, the number of infected people decreased to zero from
213 May 17–23, 2020, at which time the first emergency declaration was lifted; to five people from February 21–27, 2021,
214 when the second emergency declaration was lifted; and to 13 people from June 13–19, 2021, when the third emergency
215 declaration was lifted. This suggests that the declaration of a state of emergency effectively led to a decrease in the number
216 of infected people.

217

218 **Fig 5. Weekly change of the number of infected people between March 29, 2020, and July 31, 2021.** Osaka Prefecture
219 experienced four waves during this time. Green periods are during the state of emergency, and yellow-green periods are
220 during the priority prevention measures.

221

222 **Cross-correlation of home range length and infected people**

223 Fig 6 presents the time series cross-correlation of home range length and number of infected people. It was found that
224 the number of infected people was slightly more correlated with HR-length (Total Travel Distance) than HR-length
225 (Farthest Distance). In addition, over the lag level of zero weeks, HR-length and the number of infected people are
226 positively correlated. The results indicate that a decrease in HR-length leads to a decline in the number of infected people.
227 However, there was only a slightly positive cross-correlation between HR-length and the number of infected people.
228 Specifically, the cross-correlation coefficient (CCC) of HR-length (Total Travel Distance) ($CCC_{\text{Total Travel Distance}}$) is 0.1546
229 at the lag level of zero weeks. As the lag increases, $CCC_{\text{Total Travel Distance}}$ also increases, and $CCC_{\text{Total Travel Distance}}$ exceeds 0.2
230 after a lag level of one week. However, even at the lag level of six weeks, the largest CCC, the $CCC_{\text{Total Travel Distance}}$ is
231 0.4030. Similarly, the cross-correlation coefficient of HR-length (Farthest Distance) ($CCC_{\text{Farthest Distance}}$) is 0.1345 at the lag
232 level of zero weeks, and 0.3950 at the lag level of six weeks, which has the largest CCC.

233 To summarize these results, home range was found to be slightly positively correlated with the number of infected
234 people after six weeks, with the highest correlation coefficient being 0.40. This means that changing the home range
235 contributes to a decrease in the number infected people, but it is not a strong effect.

236

237 **Fig 6. Cross-correlation of home range lengths and the number of infected people.** $CCC_{\text{Total Travel Distance}}$ is HR-length
238 (Total Travel Distance). $CCC_{\text{Farthest Distance}}$ is HR-length (Farthest Distance). In cross-correlation, the lag was set to eight
239 weeks.

240

241 Discussion and conclusion

242 This study clarifies a slight positive correlation between home range and the number of infected people after one week
243 during the medium-term of the COVID-19 pandemic in Ibaraki City. The positive correlations validated the results of
244 previous studies [18,19]. In addition, prior research that analyzed the short-term period clarified a strong correlation [17,20].
245 In contrast to these studies, the novelty of the present study is that it clarifies the slight positive correlation between home
246 range and the number of infected people in the medium-term period following the onset of the COVID-19 pandemic.

247 It was found that the number of infected people was slightly more correlated with HR-length (Total Travel Distance)
248 than HR-length (Farthest Distance). Controlling travel distance is more effective than controlling the tendency to go out
249 farther. With regard to HR-length (Total Travel Distance), the CCC was found to be 0.4030 even at a lag level of six weeks,
250 which had the most significant coefficient. However, it was inexplicable at a lag level of six weeks. The reason for this is
251 the length of the incubation period of SARS-CoV-2; it takes approximately one–two weeks from the date of infection for
252 the first symptoms to appear [27]. Specifically, after the emergency declaration was issued, the number of infected people
253 decreased significantly in approximately one–two weeks. However, the home range had decreased even before the
254 emergency declaration was issued, and the decrease was not significant. This might be the reason for the low correlation
255 coefficient. It may be concluded that a decrease in home range is only one of the indirect factors contributing toward a
256 reduction in the number of infected people.

257 The conclusions suggest that factors other than the home range might contribute to a decrease in the number of
258 infected people; for instance, restrictions imposed under the state of emergency in the Osaka Prefecture, which applied to
259 the residents of Ibaraki City during this period. Citizens were required to refrain from not only non-urgent outings but also
260 from drinking alcohol in a group on the street or in a park; the operation of restaurants after 8:00 p.m. was also suspended,
261 and large-scale events were prohibited [32]. Restrictions with regard to wearing face masks might also have had an impact
262 on the rate of infection. For example, as the home range expands, one factor influencing the spread of infection might be
263 an increase in the number of situations in which people remove their masks, such as while eating lunch and smoking [33].
264 In addition, during the third emergency declaration, household infections had become a significant problem, which was
265 associated with sharing a bedroom and speaking with an index case individual for 30 min or longer [34].

266 Based on these results, it is possible to improve current measures for an emergency declaration. For instance, instead
267 of controlling human mobility, the number of infected people could be effectively reduced by the imposition of mask
268 mandates, reducing the opening hours of restaurants, and increasing the use of hotel facilities for medical treatment. These
269 measures would also make it possible for people to fulfill their work and study commitments while taking steps to protect
270 themselves from infection.

271 The limitation of this study is that we analyzed only the indicator of home range in Ibaraki City. It is necessary to
272 analyze not only the distance traveled using LH data, but also the place of stay using area-based data. The analysis might
273 provide a higher correlation coefficient. Further, due to privacy issues, the discrepancies between samples of the number
274 of infected people and human mobility pose a research challenge. Therefore, it is also necessary to analyze the actual
275 number of infected people and the distance they travel. Moreover, we analyzed data from Ibaraki City, a suburban city, but
276 human mobility in central cities should also be considered in determining the significant factors influencing infection
277 spread. In the future, it is necessary to study different types of cities to examine the correlation between home range and
278 the number of infected people in a Japanese context, such as Osaka City, the more metropolitan capital of the Osaka
279 Prefecture.

280

281 **References**

- 282 1. Li Y, Li MM, Rice MG, Zhang HY, Sha DX, Li M, et al. The impact of policy measures on human
283 mobility, COVID-19 cases, and mortality in the US: A spatiotemporal perspective. *Int J Environ Res*
284 *Public Health*. 2021;18. doi: [10.3390/ijerph18030996](https://doi.org/10.3390/ijerph18030996).
- 285 2. Japanese Cabinet. Secretariat (office for COVID-19 and other emerging infectious disease control).
286 Change Restrictions Lift State Emerg. [Cited 2021 December 25]. Available from:
287 <https://corona.go.jp/en/emergency/>
- 288 3. Jiang YQ, Huang X, Li ZL. Spatiotemporal patterns of human mobility and its association with land
289 use types during COVID-19 in New York City. *ISPRS Int J Geo Inf*. 2021;10. doi:
290 [10.3390/ijgi10050344](https://doi.org/10.3390/ijgi10050344).
- 291 4. Prime minister of Japan and His cabinet. [COVID-19] Press Conference by the Prime Minister
292 regarding the Novel Coronavirus; 2021. [Cited 2021 December 31]. Available from:
293 https://japan.kantei.go.jp/99_suga/statement/202108/_00009.html

- 294 5. Gao JL, Zheng PP, Jia YN, Chen H, Mao YM, Chen SH, et al. Mental health problems and social media
295 exposure during COVID-19 outbreak. PLOS ONE. 2020;15: e0231924. doi:
296 [10.1371/journal.pone.0231924](https://doi.org/10.1371/journal.pone.0231924).
- 297 6. Burt WH. Territoriality and home range concepts as applied to mammals. J Mammal. 1943;24: 346-
298 352. doi: [10.2307/1374834](https://doi.org/10.2307/1374834).
- 299 7. Kato H. How Does the location of urban facilities affect the forecasted population change in the Osaka
300 metropolitan fringe area? Sustainability. 2020;13: 110. doi: [10.3390/su13010110](https://doi.org/10.3390/su13010110).
- 301 8. Google. Google COVID-19 community mobility reports. [cited 2021 June 25]. Available from:
302 <https://www.google.com/covid19/mobility/>
- 303 9. Ibaraki open data. Population/Households [in Japanese]; 2021. [Cited 2021 December 25]. Available
304 from: <http://opendata.city.ibaraki.osaka.jp/group/jinko>
- 305 10. Kato H, Takizawa A, Matsushita D. Impact of COVID-19 pandemic on home range in a suburban city
306 in the Osaka metropolitan area. Sustainability. 2021;13: 11. doi: [10.3390/su13168974](https://doi.org/10.3390/su13168974).
- 307 11. Kato H. Development of a spatio-temporal analysis method to support the prevention of COVID-19
308 infection: Space-time kernel density estimation using GPS location history data BT - Urban informatics
309 and future cities. In: Geertman SCM, Pettit C, Goodspeed R, Staffans A, editors. Cham: Springer
310 International Publishing; 2021. pp. 51–67. doi: [10.1007/978-3-030-76059-5_4](https://doi.org/10.1007/978-3-030-76059-5_4).
- 311 12. Kato H, Matsushita D. Changes in walkable streets during the COVID-19 pandemic in a suburban city
312 in the Osaka metropolitan area. Sustainability. 2021;13: 20. doi: [10.3390/su13137442](https://doi.org/10.3390/su13137442).
- 313 13. Jia JSS, Lu X, Yuan Y, Xu G, Jia JM, Christakis NA. Population flow drives spatio-temporal
314 distribution of COVID-19 in China. Nature. 2020;582: 389–394. doi: [10.1038/s41586-020-2284-y](https://doi.org/10.1038/s41586-020-2284-y).
- 315 14. Kraemer MUG, Yang CH, Gutierrez B, Wu CH, Klein B, Pigott DM, et al. The effect of human mobility
316 and control measures on the COVID-19 epidemic in China. Science. 2020;368: 493–497. doi:
317 [10.1126/science.abb4218](https://doi.org/10.1126/science.abb4218).
- 318 15. Zhou Y, Xu RZ, Hu DS, Yue Y, Li QQ, Xia JZ. Effects of human mobility restrictions on the spread of
319 COVID-19. In: Shenzhen, China: a modelling study using mobile phone data. Lancet. Digit Heal.
320 2020;2: E417–E424.
- 321 16. Lee MH, Zhao J, Sun QQ, Pan YX, Zhou WY, Xiong CF, et al. Human mobility trends during the early
322 stage of the COVID-19 pandemic in the United States. PLOS ONE. 2020;15: e0241468. doi:
323 [10.1371/journal.pone.0241468](https://doi.org/10.1371/journal.pone.0241468).

- 324 17. Badr HS, Du HR, Marshall M, Dong ES, Squire MM, Gardner LM. Association between mobility
325 patterns and COVID-19 transmission in the USA: A mathematical modelling study. *Lancet Infect Dis.*
326 2020;20: 1247–1254. doi: [10.1016/S1473-3099\(20\)30553-3](https://doi.org/10.1016/S1473-3099(20)30553-3).
- 327 18. Xiong CF, Hu SH, Yang MF, Luo WY, Zhang L. Mobile device data reveal the dynamics in a positive
328 relationship between human mobility and COVID-19 infections. *Proc Natl Acad Sci U S A.* 2020;117:
329 27087–27089. doi: [10.1073/pnas.2010836117](https://doi.org/10.1073/pnas.2010836117).
- 330 19. Zhao WY, Zhu Y, Xie J, Zheng Z, Luo H, Ooi OC. The moderating effect of solar radiation on the
331 association between human mobility and COVID-19 infection in Europe. *Environ Sci Pollut Res Int.*
332 2022;29: 828–835. doi: [10.1007/s11356-021-15738-w](https://doi.org/10.1007/s11356-021-15738-w).
- 333 20. Yabe T, Tsubouchi K, Fujiwara N, Wada T, Sekimoto Y, Ukkusuri SV. Non-compulsory measures
334 sufficiently reduced human mobility in Tokyo during the COVID-19 epidemic. *Sci Rep.* 2020;10:
335 18053. doi: [10.1038/s41598-020-75033-5](https://doi.org/10.1038/s41598-020-75033-5).
- 336 21. Nagata S, Nakaya T, Adachi Y, Inamori T, Nakamura K, Arima D, et al. Mobility change and COVID-
337 19 in Japan: Mobile data analysis of locations of infection. *J Epidemiol.* 2021;31: 387–391. doi:
338 [10.2188/jea.JE20200625](https://doi.org/10.2188/jea.JE20200625).
- 339 22. The Japan times. The Coronavirus Jpn’s Constitution. 2020. [cited 2021 June 1]. Available from:
340 [https://www.japantimes.co.jp/opinion/2020/04/14/commentary/japan-commentary/coronavirus-](https://www.japantimes.co.jp/opinion/2020/04/14/commentary/japan-commentary/coronavirus-japans-constitution/)
341 [japans-constitution/](https://www.japantimes.co.jp/opinion/2020/04/14/commentary/japan-commentary/coronavirus-japans-constitution/)
- 342 23. Japanese law translation. Outline of the act partially amending the act on special measures against
343 novel influenza, *etc.*, and other relevant acts. [cited 2022 March 31]. Available from:
344 https://www.japaneselawtranslation.go.jp/outline/30/210621192151_905R207.pdf
- 345 24. Agoop Corporation. Homepage. [cited 2021 April 12]. Available from: <https://www.agoop.co.jp/en/>
- 346 25. Agoop. Privacy policy. [cited 2021 December 11]. Available from:
347 <https://www.agoop.co.jp/appslib/walkcoin/>
- 348 26. Japan L. Guidelines for the use of device location data [in Japanese]. [cited 2021 April 12]. Available
349 from: <https://www.lbmajapan.com/guideline>
- 350 27. Li Q, Guan XH, Wu P, Wang XY, Zhou L, Tong YQ, et al. Early transmission dynamics in Wuhan,
351 China, of novel coronavirus-infected pneumonia. *N Engl J Med.* 2020;382: 1199–1207. doi:
352 [10.1056/NEJMoa2001316](https://doi.org/10.1056/NEJMoa2001316).

- 353 28. Japan Tourism Agency. Go to travel campaign [in Japanese]. [cited 2021 September 9]. Available from:
354 <https://biz.goto.jata-net.or.jp/>
- 355 29. Anzai A, Nishiura H. “Go To Travel” campaign and travel-associated coronavirus Disease 2019 cases:
356 A descriptive analysis, July-August 2020. J Clin Med. 2021;10. doi: [10.3390/jcm10030398](https://doi.org/10.3390/jcm10030398).
- 357 30. Anderson DJ. The home range: A new nonparametric-estimation technique. Ecology. 1982;63: 103–
358 112. doi: [10.2307/1937036](https://doi.org/10.2307/1937036).
- 359 31. Ibaraki City Government. Outbreaks of new coronavirus in Ibaraki city [in Japanese]. [cited 2021
360 December 28]. Available from:
361 <https://www.city.ibaraki.osaka.jp/kikou/kenkoi/kenkou/menu/2covid19.html>
- 362 32. Osaka Prefecture. Requests based on the emergency measure. [cited 2021 December 3]. Available
363 from: [https://www.pref.osaka.lg.jp/attach/38112/00417026/quasi_Emergency_measures0127-
364 0220.pdf](https://www.pref.osaka.lg.jp/attach/38112/00417026/quasi_Emergency_measures0127-0220.pdf)
- 365 33. Chin WCB, Bouffanais R. Spatial super-spreaders and super-susceptibles in human movement
366 networks. Sci Rep. 2020;10: 18642. doi: [10.1038/s41598-020-75697-z](https://doi.org/10.1038/s41598-020-75697-z).
- 367 34. Ng OT, Marimuthu K, Koh V, Pang J, Linn KZ, Sun J, et al. SARS-CoV-2 seroprevalence and
368 transmission risk factors among high-risk close contacts: A retrospective cohort study. Lancet Infect
369 Dis. 2021;21: 333–343. doi: [10.1016/S1473-3099\(20\)30833-1](https://doi.org/10.1016/S1473-3099(20)30833-1).

East Esia

• Beijing

• Seoul

Osaka

• Shanghai

• Taipei

Source: Esri, DigitalGlobe, GeoEye, Earthstar Geographics, CNES/Airbus DS, USDA, USGS, AeroGRID, IGN, and the GIS User Community

Osaka Metropolitan Area

Kyoto

Ibaraki

Kobe

Osaka

5km

10km

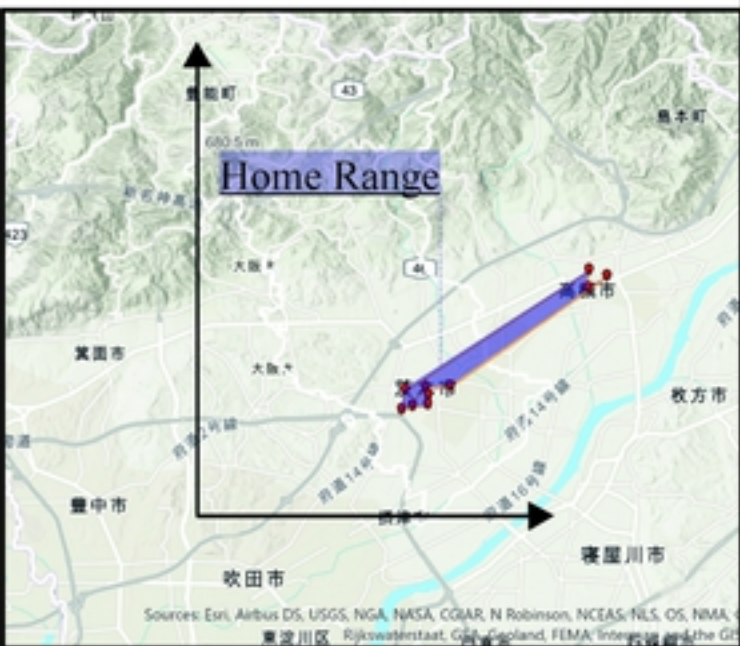
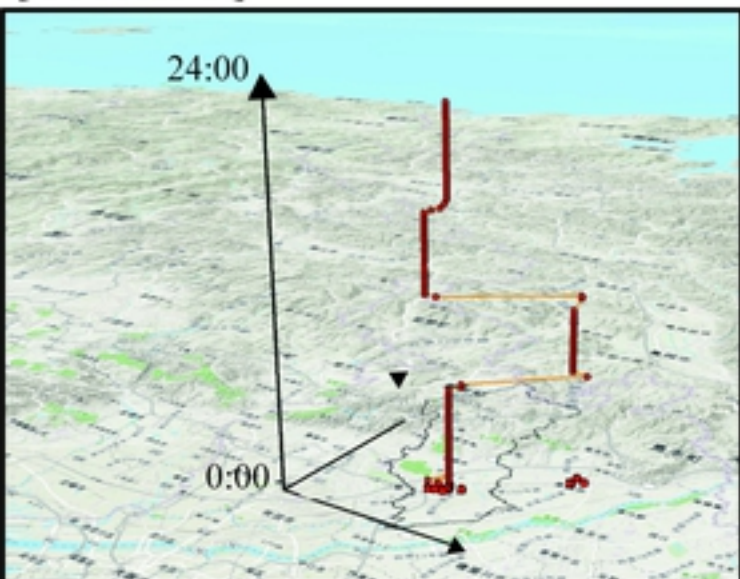
15km

20km

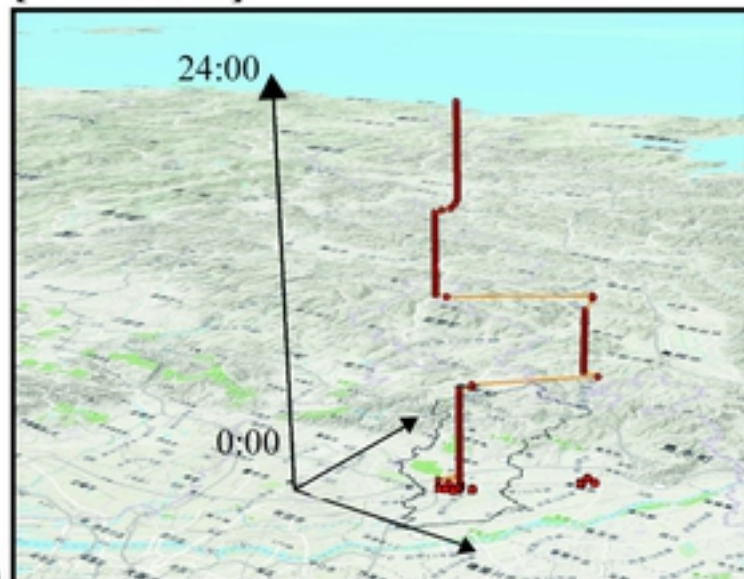
Distance from Center of Ibaraki City

Source: Esri, DigitalGlobe, GeoEye, Earthstar Geographics, CNES/Airbus DS, USDA, USGS, AeroGRID, IGN, and the GIS User Community

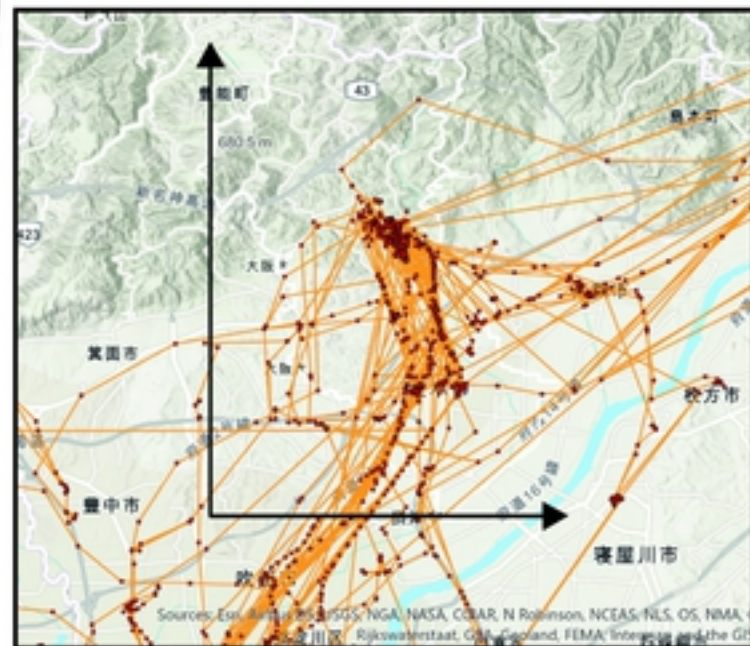
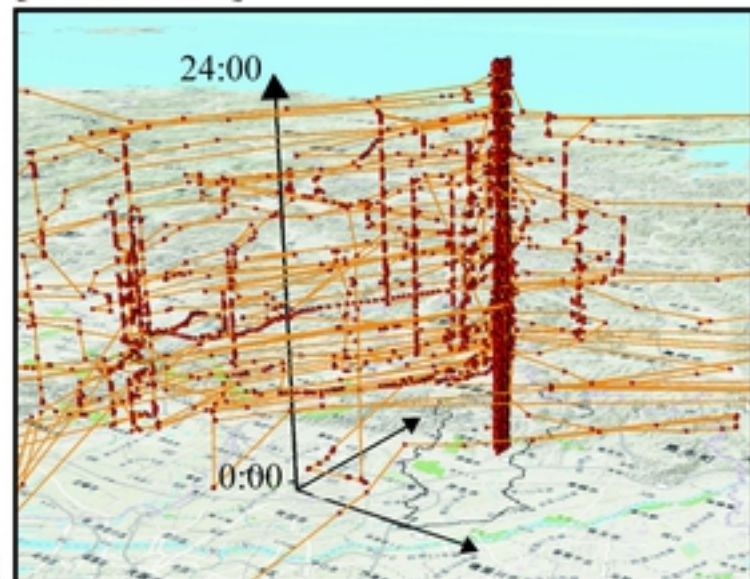
[Process 1]

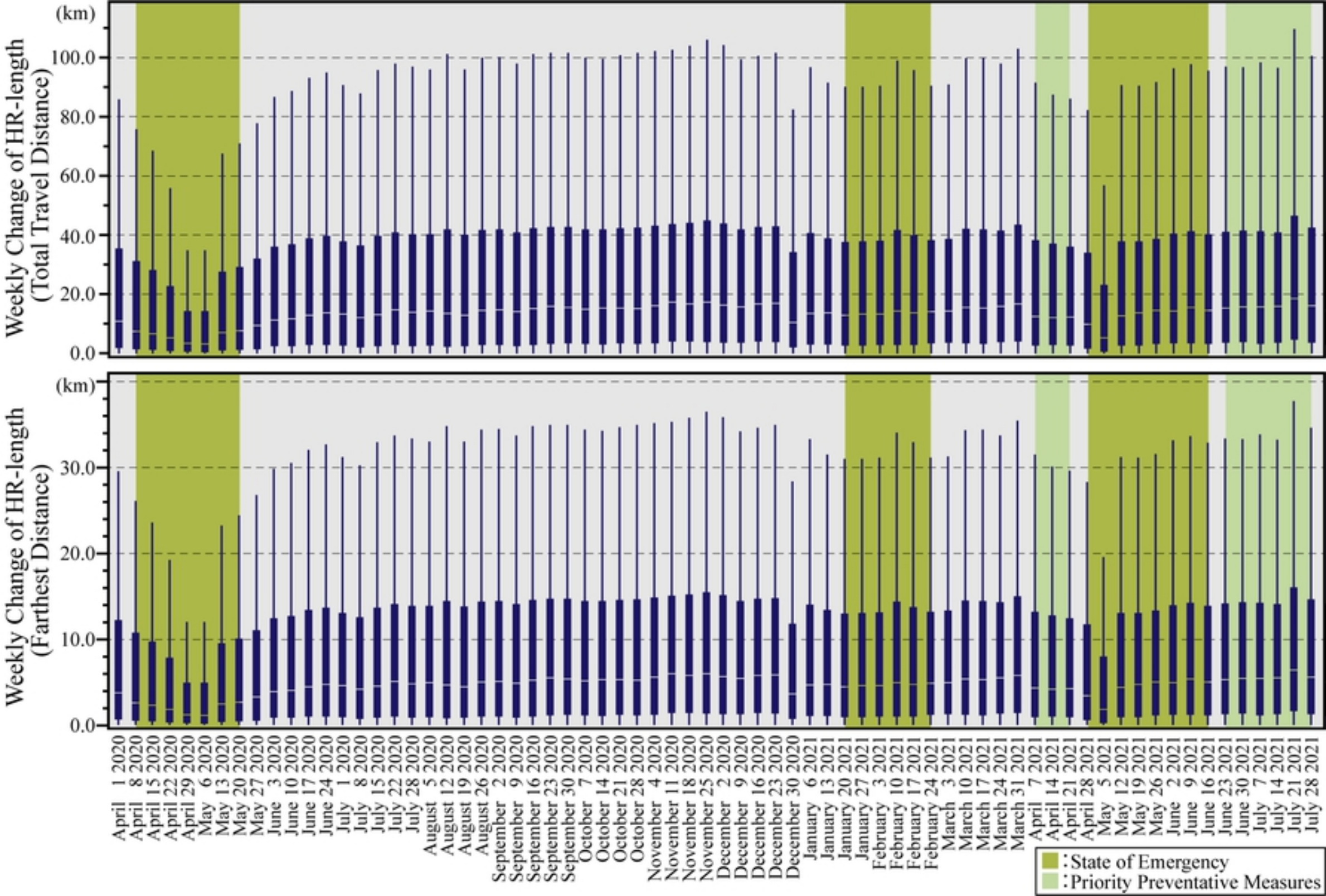


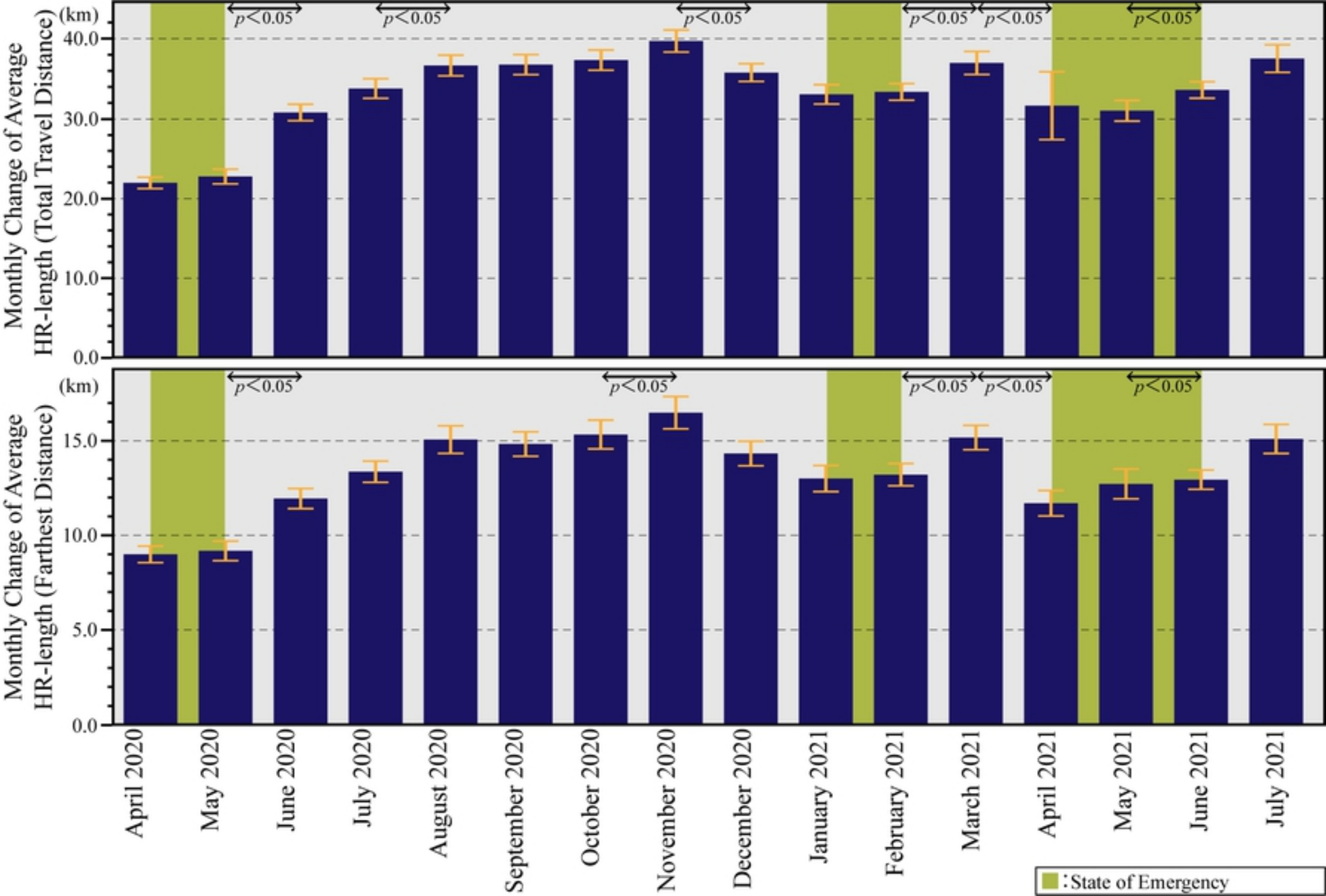
[Process 2]



[Process 3]







The number of people infected with SARS-CoV-2 in the Ibaraki City.

