

1 **Prophylactic and reactive vaccination strategies for healthcare** 2 **workers against MERS-CoV**

3 Daniel J Laydon^{1,*}, Simon Cauchemez², Wes R Hinsley¹, Samir Bhatt^{1,3}, Neil M Ferguson^{1,*}

4 ¹ MRC Centre for Global Infectious Disease Analysis, School of Public Health, Imperial College London,
5 Faculty of Medicine, Norfolk Place, London, W2 1PG, UK

6 ² Mathematical Modelling of Infectious Diseases Unit, Institut Pasteur, Université de Paris, CNRS
7 UMR2000, 75015 Paris, France

8 ³ Section of Epidemiology, Department of Public Health, University of Copenhagen

9 * d.laydon@imperial.ac.uk; neil.ferguson@imperial.ac.uk

10

11 **Abstract (limit 150 words)**

12 Several vaccines candidates are in development against Middle East respiratory
13 syndrome–related coronavirus (MERS-CoV), which remains a major public health
14 concern. Using individual-level data on the 2013-2014 Kingdom of Saudi Arabia
15 epidemic, we employ counterfactual analysis on inferred transmission trees (“who-
16 infected-whom”) to assess potential vaccine impact. We investigate the conditions
17 under which prophylactic “proactive” campaigns would outperform “reactive”
18 campaigns (i.e. vaccinating either before or in response to the next outbreak),
19 focussing on healthcare workers. Spatial scale is crucial: if vaccinating healthcare
20 workers in response to outbreaks at their hospital only, proactive campaigns perform
21 better, unless efficacy has waned significantly. However, campaigns that react at
22 regional or national level consistently outperform proactive campaigns. Measures
23 targeting the animal reservoir reduce transmission linearly, albeit with wide
24 uncertainty. Substantial reduction of MERS-CoV morbidity and mortality is possible
25 when vaccinating healthcare workers, underlining the need for at-risk countries to
26 **stockpile vaccines when available.**

NOTE: This preprint reports new research that has not been certified by peer review and should not be used to guide clinical practice.

27 Introduction

28 The SARS-CoV-2 pandemic has demonstrated the threat posed by novel
29 coronaviruses, the need for effective vaccines and the challenges in optimal vaccine
30 deployment. First identified in the Kingdom of Saudi Arabia (KSA) in 2012 [1-3], Middle
31 East respiratory syndrome–related coronavirus (MERS-CoV) remains a major public
32 health concern, with 2585 laboratory confirmed cases and 931 deaths having been
33 reported in 27 countries as of 16 March 2021 [4].

34

35 Human-to-human transmission occurs primarily in nosocomial settings but is
36 otherwise relatively rare [5], and dromedary camels constitute the animal reservoir [6-
37 8]. However, the threat of major outbreaks arising from human-to-human transmission
38 should not be underestimated: a single introduction of the virus to South Korea caused
39 186 cases and 38 deaths in May-July 2015 [9].

40

41 Like SARS-CoV-2, MERS-CoV infection can be asymptomatic or fatal [10]. MERS-
42 CoV has a lower transmissibility but higher lethality than SARS-CoV-2, with the
43 Infection Fatality Ratio (IFR) increasing broadly with age in each [10, 11]. While it is
44 not known whether MERS-CoV can transmit presymptomatically or asymptotically
45 like SARS-CoV-2 [12], sporadic infections in people with no known animal contact or
46 human exposures suggests that asymptomatic or sub-clinical transmission is possible
47 [13]. Estimates of the MERS-CoV IFR vary widely by country and study: in KSA and
48 the Middle East, estimates range from 22% to 69%, whereas in South Korea mortality
49 estimates ranged between 15% and 48% [1]. The IFR calculated using only laboratory
50 confirmed cases is to date 36%. Similarly, the reproduction number (R) is thought to

51 have been below 1 in Saudi Arabia and the Middle East but between 2.5 and 8.1 in
52 South Korea [1].

53

54 No antivirals or vaccines against MERS-CoV are yet licensed [14], although several
55 vaccine candidates are in development [15-18]. The most advanced candidates are
56 the University of Oxford & Janssen Vaccines ChAdOx1 MERS recombinant viral
57 vector vaccine [14], which phase 1b trials have recently shown to be safe, and to elicit
58 both antibody and T cell immune responses in humans [19], and Inovio
59 Pharmaceuticals' INO-4700 nucleic acid vaccine, which is currently in phase 2 trials
60 [20, 21].

61

62 In this study, we build on previous work [6] that inferred transmission trees (“who
63 infected whom” analysis) to estimate the MERS-CoV reproduction number, serial
64 interval, and the contributions of the animal reservoir and human-to-human
65 transmission to the 2013-2014 epidemic in the KSA. This dataset is a detailed
66 individual-level line list of a well described epidemic, and so allows us to address
67 several questions: what would be the impact of a viable vaccine? Is it possible to
68 substantially reduce morbidity and mortality if vaccinating healthcare workers only?
69 What would be the optimal strategy to limit case numbers and deaths, and would this
70 optimal strategy depend upon either vaccine efficacy or its duration of protection? If a
71 vaccine cannot be assumed to maintain its efficacy permanently, would a “reactive”
72 vaccination campaign, whereby vaccinations start in response to an outbreak, reduce
73 case numbers more than a prophylactic “proactive” campaign that may occur years

74 before the next outbreak? To what extent would control measures targeting the animal
75 reservoir mitigate an epidemic?

76

77 We further use the inferred transmission trees because they preserve spatial
78 properties of the epidemic by estimating the contributions of nosocomial, within-region,
79 between-region and animal reservoir transmission. Using this approach further limits
80 model assumptions, in that downstream effects of vaccination can simply be recorded.

81

82 We focus our analysis on healthcare workers since nosocomial transmission of MERS-
83 CoV renders them the most at-risk population, and because they could feasibly be
84 identified and vaccinated, either in preparation of future outbreaks, or at pace in
85 response to an ongoing outbreak.

86

87 [Methods](#)

88 [Data](#)

89 We employ a line list [6] that includes the day of symptom onset, hospital, region, sex,
90 healthcare worker status and clinical outcome of 681 cases of the 2013-2014 MERS-
91 CoV outbreak in the KSA. Cases with symptom onset between 1st January 2013 and
92 31st July 2014 were included in the analysis. These data were previously used [6] to
93 probabilistically infer transmission trees within a Bayesian framework. In this study we
94 employ a counterfactual analysis whereby we “prune” the inferred transmission trees
95 to evaluate a given strategy, considering what would have happened if a MERS-CoV
96 vaccine had been available to healthcare workers. We can therefore limit assumptions

97 on the extent to which vaccination would prevent transmission, and instead simply
98 delete cases and their secondary cases (in this instance nodes and branches of the
99 transmission tree) and then record the outcome.

100

101 [Transmission tree inference](#)

102 The transmission tree inference we use has been described previously [6], but is
103 included in the supplementary information for completeness. Broadly, inference is in
104 two parts: i) inference of parameters; and ii) data augmentation for the infector of each
105 case. Joint posterior estimates of the parameters and augmented data are generated
106 using Markov chain Monte Carlo (MCMC) sampling. Each posterior sample therefore
107 includes, in addition to parameters associated with the reproduction number and serial
108 interval, a transmission tree. The following section discusses the generation of
109 counterfactual posterior samples for given values of vaccine efficacy and duration,
110 using a variety of vaccination strategies.

111

112 [Counterfactual transmission trees with vaccination](#)

113 If case $k \in \mathbb{N}$ has infector $i(k) \in \mathbb{N}$, and symptom onset at time $t_k \in \mathbb{N}$, then let $\psi_k \subset \mathbb{N}$
114 denote the set of all secondary cases from case k , i.e.

$$115 \quad \psi_k = \{m : i(m) = k\}$$

116 and so therefore (the infector of the secondary cases from case k is case k)

$$117 \quad i(\psi_k) = k.$$

118 Then let $\psi_k^* \subset \psi_k$ denote the set of secondary cases from case k , if case k had been
119 vaccinated and protected. We assume that protection from disease also protects
120 against onward transmission entirely, i.e. $\psi_k^* = \phi$, the empty set. Therefore, all
121 downstream cases are deleted.

122

123 We consider two broad categories of vaccine campaign, which we name “proactive”
124 and “reactive”. Under a proactive campaign, target vaccinees are vaccinated before
125 an outbreak occurs, and so vaccinees are afforded at least some protection at the start
126 of an outbreak. However, a proactive campaign has the obvious disadvantage that it
127 is impossible to predict when the next outbreak will occur. Further, if the vaccine does
128 not maintain its efficacy permanently, then efficacy may have waned substantially by
129 the time the vaccine is actually needed. Recent experience with SARS-CoV-2
130 vaccines [22-27] suggests that waning of vaccine-induced immunity is highly plausible
131 for a MERS-CoV vaccine.

132

133 Therefore, we also consider reactive vaccination campaigns that do not attempt to
134 inoculate the population before the next outbreak, but rather in response to the current
135 outbreak. While this has the disadvantage that the first cases in any outbreak will be
136 left unprotected, it is possible that cases and deaths arising from slow react times
137 would be outweighed by those arising from the suboptimal protection from a waning
138 vaccine. Alternatively, elimination of downstream cases may mean that stopping as
139 many early cases as possible, even with a vaccine of diminished efficacy, is more
140 important than having the highest efficacy possible for the majority of would-be cases.

141

142 An advantage of a reactive campaign is that the vaccine would provide its maximum
143 protection even if waning is substantial. However, the success of such a campaign is
144 dependent on the speed with which target vaccinees are vaccinated, and the delay
145 between vaccination and protection. We consider three levels of reactive campaign,
146 whereby: i) cases within a given hospital would have been vaccinated in response to
147 the first case in that hospital; ii) cases within a given region would have been
148 vaccinated in response to the first case in that region (regardless the hospital in which
149 the first case occurred); iii) cases within all regions would have been vaccinated in
150 response to the first case in the country (regardless of the region in which the first case
151 occurred). We are keen that each strategy we consider could at least in principle be
152 implemented as policy, even if the required react times would prove challenging in
153 practice.

154

155 Let the initial vaccine efficacy be denoted VE . In our main analysis, we assume
156 exponential waning of efficacy, and if D is the vaccine's mean efficacy duration, then
157 efficacy after t^* years post vaccination is given by

158
$$VE^*(t^*) = VE \exp(-t^* / D).$$

159 As a sensitivity analysis, we also consider slower waning of immunity using the
160 sigmoidal Hill function, and so in this case

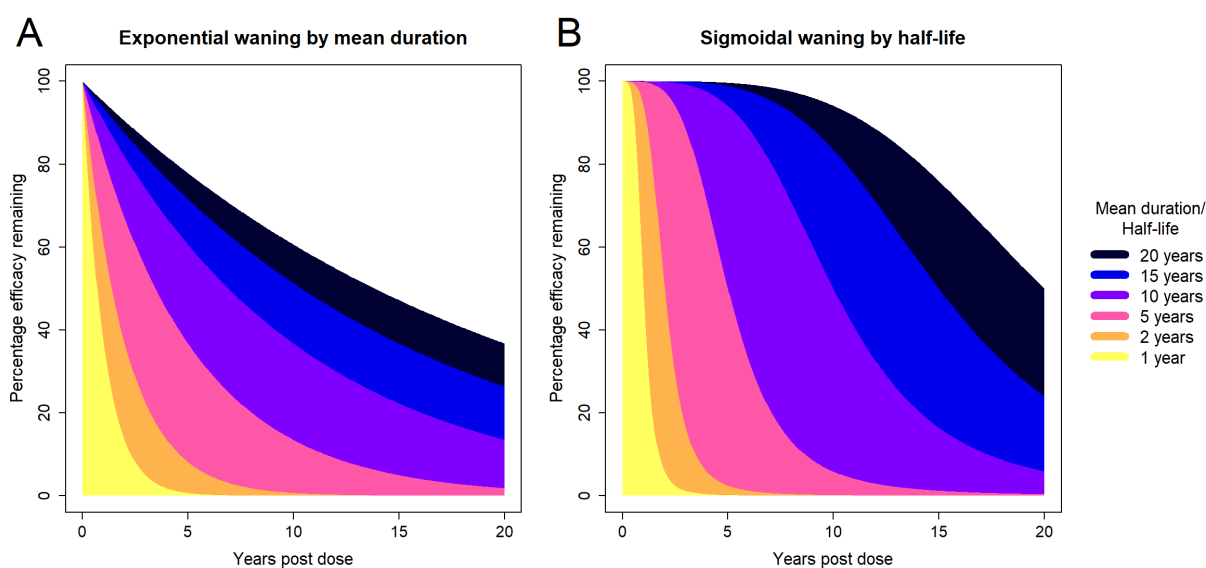
161
$$VE^*(t^*) = VE \left(1 - \frac{(t^* / Y)^a}{1 + (t^* / Y)^a} \right)$$

162 where Y is the efficacy half-life and a governs the speed of decline. We set $a = 4$ as a
163 balance between allowing the vaccine to maintain its efficacy for longer than
164 exponential waning, while also having a reasonably gradual decline [Figure 1].

165

166 We consider mean durations (or half-lives if waning is sigmoidal) of 1, 2, 5, 10, 15, and
167 20 years, as well as no vaccine waning. We simulate values of 6 months, and 1 to 10
168 years for the time between vaccination and the next outbreak (which we term the “wait”
169 for brevity).

170



171

172 **Figure 1:** Percentage of initial vaccine efficacy remaining over time **A** by mean duration,
173 assuming exponential waning; **B** by half-life, assuming sigmoidal waning. Mean durations and
174 half-lives of 1, 2, 5, 10, 15 and 20 years are shown.

175

176 If S denotes the set of people to be vaccinated, and P_c is the coverage achieved in a
177 campaign, then under a proactive strategy the probability $P_{v,k}$ that a given case k will
178 be vaccinated is given by

179
$$P_{v,k} = \delta_S(k)P_c$$

180 where $\delta_S(k)$ is defined as

181
$$\delta_S(k) = \begin{cases} 1 & k \in S \\ 0 & k \notin S \end{cases}$$

182 and the probability that case k will be protected, and deleted from the transmission
183 tree, is

184
$$P_{v,k} VE^*(t_k^*)$$

185 where t_k^* is the time post vaccination for case k . In this work, S is the set of healthcare
186 workers, and we assume full coverage (i.e. $P_c = 1$) of this group, although the effects
187 of reduced coverage can simply be obtained through scaling. For example, 45%
188 efficacy with 100% coverage is equivalent to 90% efficacy with 50% coverage.

189

190 Under a reactive campaign, a delay must be incorporated to account for first the react
191 time τ_I between the first case in a hospital (or region or country), and second the lag
192 τ_P between vaccination and protection. Hence the probability that case k will be
193 vaccinated is given by the following product

194
$$P_{v,k} = \delta_I(k)\delta_S(k)P_c$$

195 where $\delta_I(k)$ is defined as

196
$$\delta_I(k) = \begin{cases} 1 & t_k \geq T_{0,h} + \tau_I \\ 0 & \text{Otherwise} \end{cases}$$

197 If a reactive campaign takes place at the level of a hospital, we define $T_{0,h}$ as the time
198 of symptom onset of the first case in hospital h . However, if reacting at regional or
199 national level, $T_{0,h}$ is defined as the time of symptom onset of the first case in region h
200 or the entire country.

201

202 For reactive campaigns, only the vaccine's initial efficacy is relevant (and not its
203 duration of protection) as vaccine waning will be negligible in the time frames we
204 consider between an outbreak and implementation. Here then the probability that case
205 k will be protected and deleted from the transmission tree, is

$$206 \quad \delta_P(k) P_{v,k} VE$$

207 where $\delta_P(k)$ is given by

$$208 \quad \delta_P(k) = \begin{cases} 1 & t_k \geq T_{0,h} + \tau_I + \tau_P \\ 0 & \text{Otherwise} \end{cases}$$

209 and where we vary τ_I between 0 and 28 days in 2-day intervals. T cell responses to
210 ChAdOx1 MERS peaked at 14 days, and while for antibodies the peak was observed
211 at 28 days, antibody titres were still high at 14 days [19], and therefore we set $\tau_P = 14$
212 days. It is important to note that if the vaccine takes longer than 14 days-post-dose to
213 confer protection, this is effectively already included in our analysis, as it is really the
214 react time plus the time to protection that is important and so a longer time to protection
215 is essentially a relabelling.

216

217 We investigate the effect of control measures aimed at limiting animal reservoir
218 transmission, which we model as a simple proportion γ of reservoir infections that are

219 stopped. That is, if in a particular posterior sample of a given model run, case k has
220 $i(k) = 0$, then case k and all their downstream cases are deleted with probability ζ . We
221 consider camel control measure efficacies (values of γ) of 10%, 20%, 30%, 40% and
222 50%. Camel control measures are considered both in isolation and in combination with
223 vaccination campaigns.

224

225 For a given strategy, we calculate the proportion of cases and deaths averted, and the
226 change in transmission proportions (from e.g. the animal reservoir or within hospitals).
227 The strategies we model are summarised in Table 1. In both proactive and reactive
228 campaigns, we consider values of initial efficacy in 5% intervals between 5% and
229 100%.

230

231 [Model fitting](#)

232 In the inference of transmission trees and parameter posteriors, all priors are uniform
233 and fitted on a log scale. We performed 55,000 iterations with a burn-in period of 5,000,
234 thinning every 5 iterations, resulting in 10,000 posterior samples per model run.
235 Convergence is assessed visually. The model is coded in C++ and R version 4.0.5
236 [28], using packages “ggplot2” [29] and “igraph” [30] for plotting. All model code,
237 (anonymised) data, and precompiled binaries are available at
238 https://github.com/dlaydon/MERS_VacTrees.

239

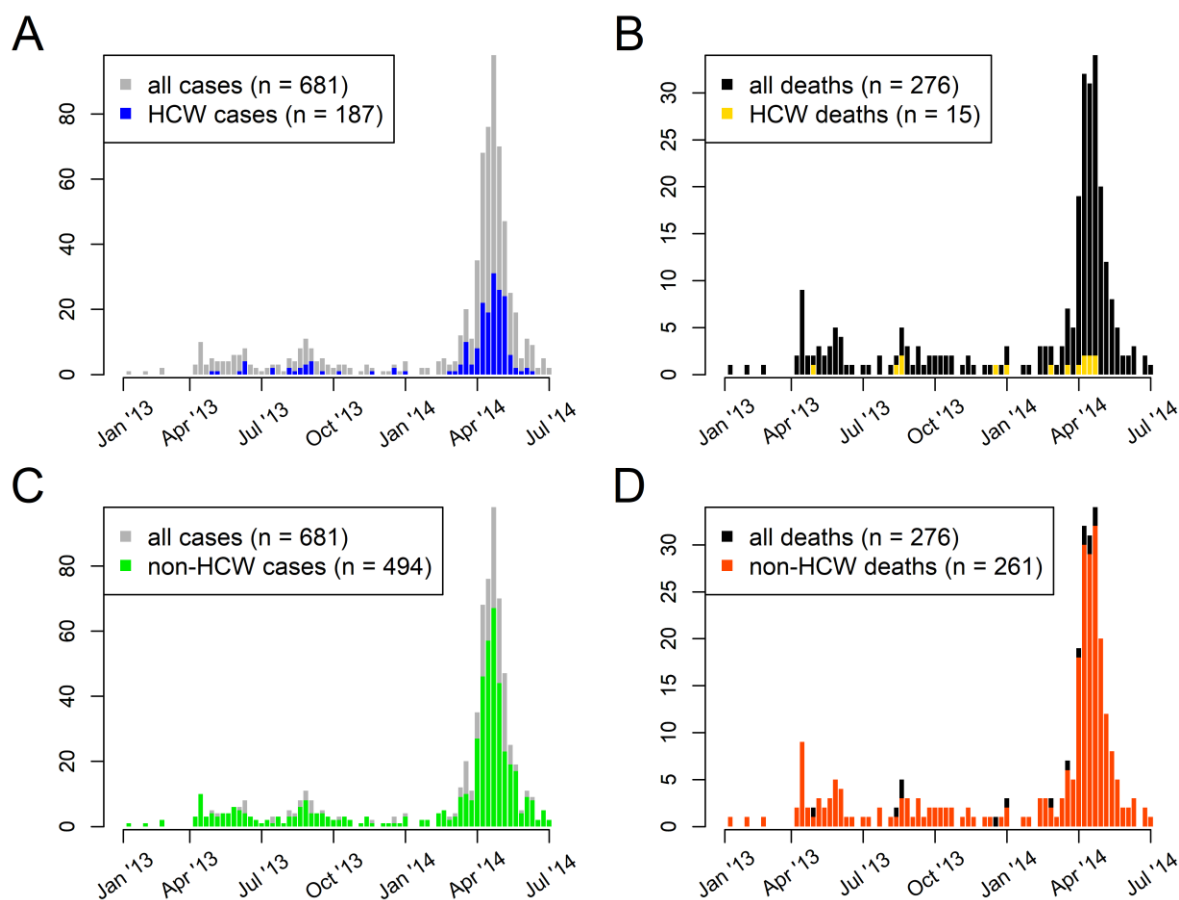
240 Results

241 Data

242 In the 18 months from the start of 2013, there were 681 MERS cases, where date of
243 symptom onset and patient's hospital was reported, of which 534 (78%) were
244 symptomatic at presentation and 276 (41%) were fatal. 187 (28%) of cases were in
245 healthcare workers (HCWs), among whom there were 15 deaths, giving an 8% case-
246 fatality ratio among healthcare workers, and comprising only 5% of all 276 deaths. The
247 case-fatality ratio among non-HCWs was 53% [Figure 2].

248

249



250

251 **Figure 2:** Weekly incidence of MERS-CoV cases (A, C) and deaths (B, D) for 2013-2014
252 outbreaks, among healthcare workers (HCW) (A, B) and non-healthcare workers (non-HCW)
253 (C, D).

254

255 [Example model output](#)

256 Figure 3 shows a series of transmission trees (“who-infected-whom” plots) from
257 example model runs with and without vaccination. The trees show the contribution to
258 transmission from the animal reservoir, as well as transmission within hospitals,
259 between hospitals but within regions, and between regions.

260

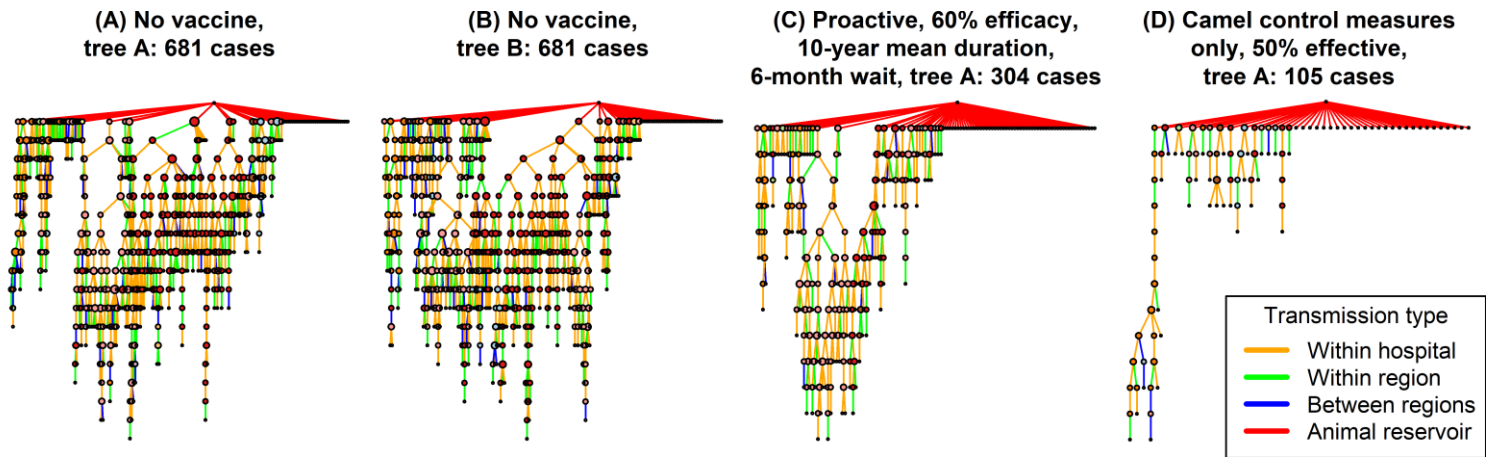


Figure 3: Example transmission trees. **(A)** No vaccine, inferred tree A. **(B)** No vaccine, inferred tree B. **(C)** 60% efficacious vaccine with 10-year mean duration, given in proactive campaign that occurs 6 months before the next outbreak. **(D)** Only control measures targeting transmission from the animal reservoir are considered, 50% efficacy assumed.

261

262 [Interventions targeting camels only](#)

263 If humans are unvaccinated and interventions solely target the animal reservoir [Figure
264 S1], then the mean proportions of cases and deaths averted is largely identical to the
265 effectiveness of control measures. However, credible intervals are very wide, reflecting
266 the unequal contribution of early cases in each local outbreak to the overall epidemic.

267

268 [Proactive campaigns](#)

269 Under a proactive strategy, healthcare workers are vaccinated in anticipation of the
270 next outbreak, and therefore all vaccinees have at least some protection from its
271 outset. However, a proactive strategy depends on the extent of vaccine waning.
272 Therefore success is a function of initial efficacy, duration and the wait time until the
273 next outbreak, where the latter cannot be known in advance.

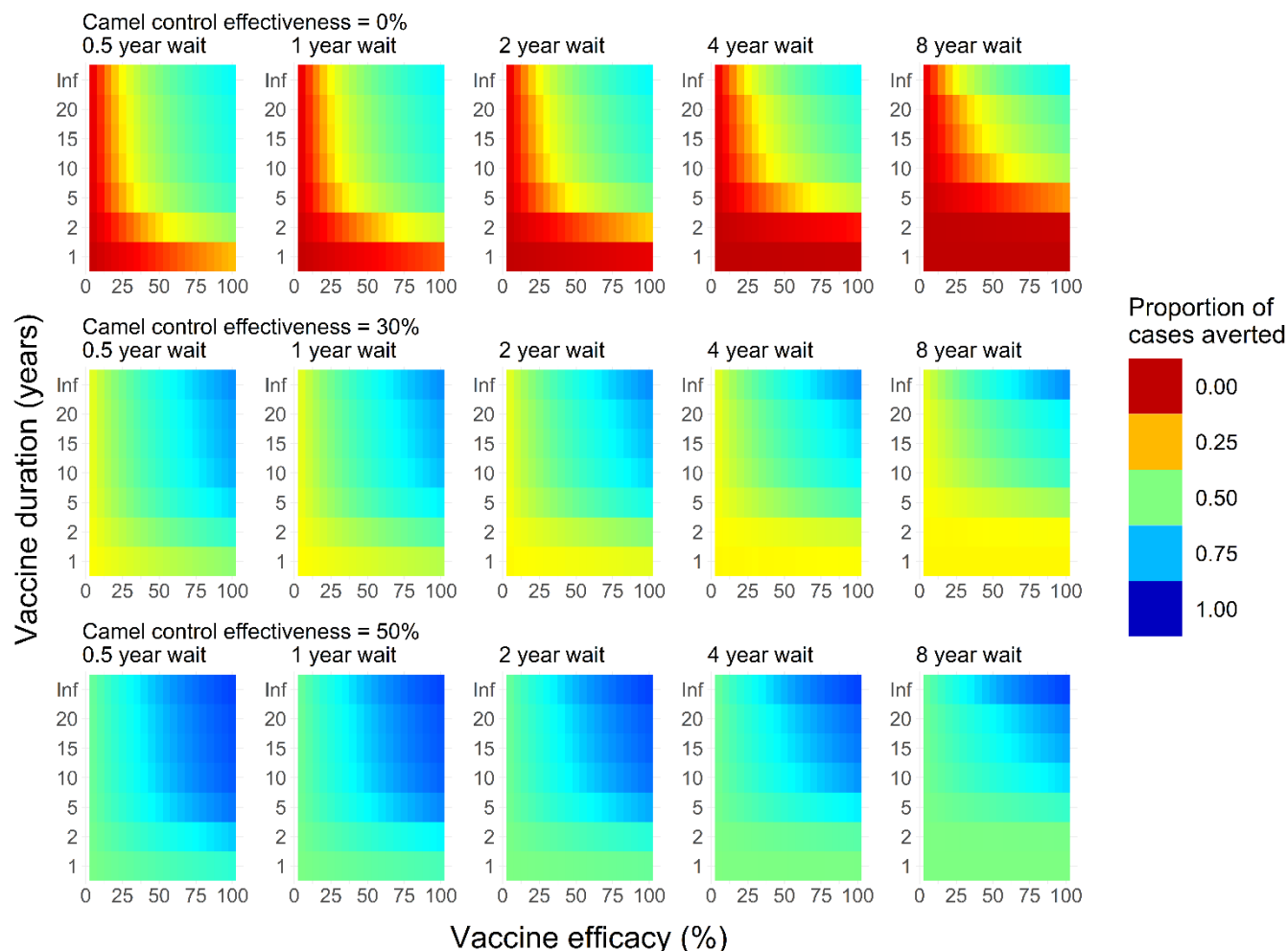
274

275 In the absence of camel control measures, under an optimistic scenario of 90%
276 efficacy with a 20-year mean duration and only 6 months until the next outbreak, 64%
277 (95% CrI: 54% - 74%) of cases and 51% (95% CrI: 39% - 64%) of deaths would be
278 averted. However, if the next outbreak occurred 8 years after vaccination, then only
279 54% (95% CrI: 41% - 67%) of cases and 41% (95% CrI: 28% - 58%) of deaths would
280 be averted. The 2013-2014 KSA MERS-CoV outbreak has been the only one of its
281 scale [31], which suggests that the wait until next large outbreak (i.e. an outbreak that
282 will most require vaccination) will be long.

283

284 Figure 4 shows the proportion of cases averted as a function of efficacy, duration, wait
285 between vaccination and the next outbreak, and the effectiveness of camel control
286 measures. Figure S2 shows the equivalent plots for the proportion of deaths averted.
287 The success of a proactive campaign increases with the vaccine's efficacy and
288 duration of protection, and decreases with the wait until next outbreak. The wait
289 between vaccination and outbreak is largely irrelevant if duration is long (e.g. 20
290 years), whereas the duration matters far less for short waits, and so here success is a
291 function primarily of efficacy. In any case, low efficacies (e.g. $\leq 25\%$) struggle to make
292 any impact, achieving at most a 31% (95% CrI: 18% - 51%) reduction in cases and
293 23% (95% CrI: 10% - 42%) reduction in deaths. Short durations (≤ 2 years) similarly
294 struggle unless waits are short (< 1 year) and efficacy is at least moderate (e.g. $\geq 50\%$).

295



296

297 **Figure 4.** Each plot shows the mean posterior estimate of the proportion of cases averted by

298 efficacy (x-axis) and mean duration (y-axis). Deeper blue colours indicate more averted cases.

299 Each column of plots shows a given wait until the next outbreak after vaccination. Waits of 6

300 months, 1, 2, 4, and 8 years are shown. Each row of plots shows a given efficacy of camel

301 control measures: values of 0% (i.e. no camel control measures), 10%, 30% and 50% are

302 shown.

303

304 Adding measures targeting the animal reservoir can make large differences to

305 proactive campaigns [Figure 4]. For example, 30% effective camel controls would

306 improve the above optimistic scenario (90% efficacy, 20-year mean duration and 6

307 months wait) to 75% (95% CrI: 63% - 87%) of cases and 66% (95% CrI: 49% - 83%)

308 of deaths. 50% effective camel control measures would improve this further to 82%
309 (95% CrI: 69% - 92%) of cases and 75% (95% CrI: 57% - 90%) of deaths. Trends with
310 efficacy, duration and wait time hold with the addition of camels, and the uncertainty
311 in modelling camels in isolation is also present in combination with proactive
312 campaigns. Lower credible intervals [Figure S3] show substantially less effective
313 campaigns, whereas upper credible intervals [Figure S4] practically eliminate the
314 epidemic for most values of efficacy, duration, wait time and camel control
315 effectiveness that we considered.

316

317 [Reactive campaigns](#)

318 In the likely event that vaccine efficacy wanes over time, even for a high efficacy and
319 duration, a proactive campaign is still dependent on there being a sufficiently short
320 wait until the next outbreak, at least in the absence of widespread and effective camel
321 control measures.

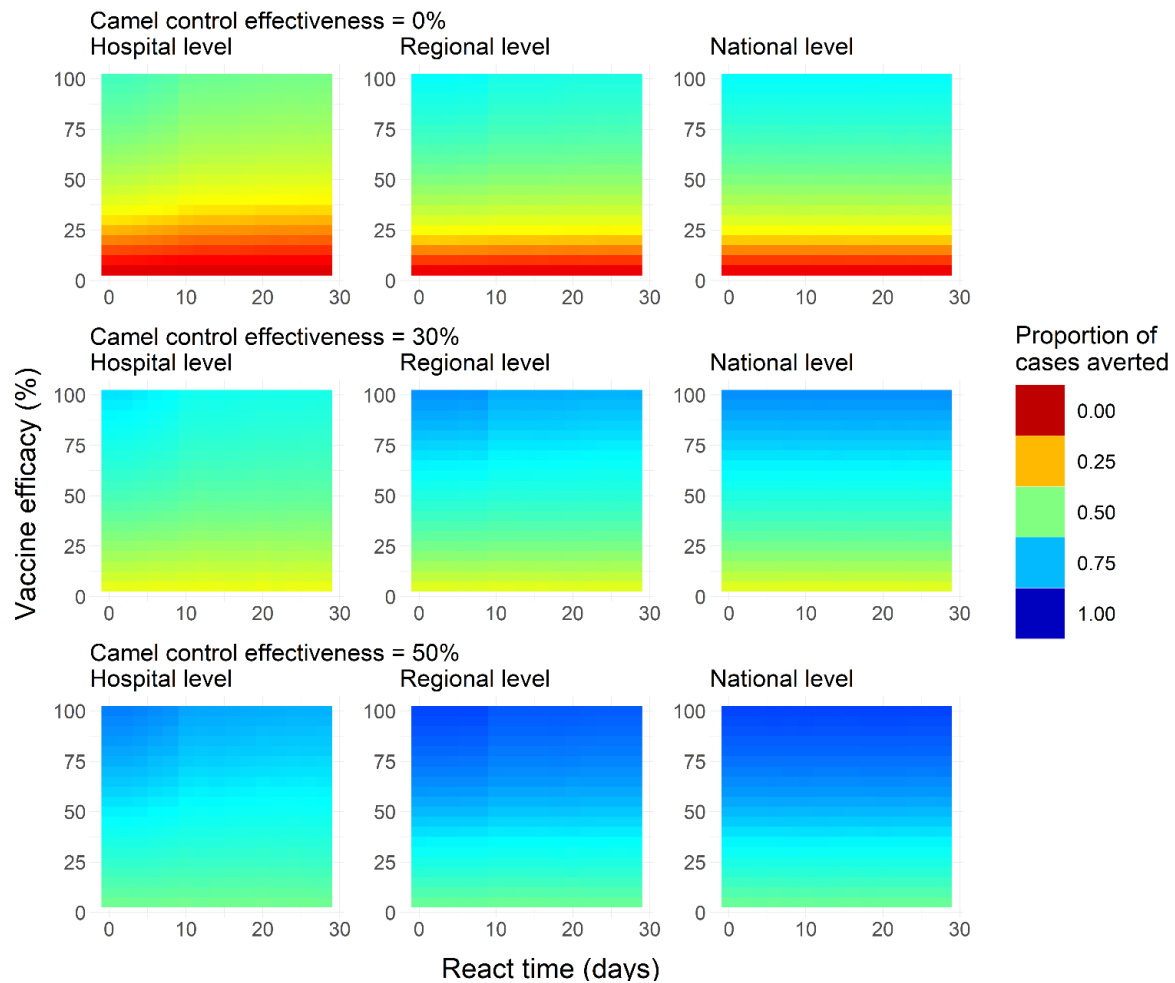
322

323 Under a reactive campaign, an outbreak is already underway and so neither the wait
324 until the next outbreak, nor the vaccine's duration of protection are relevant. However,
325 the react time between the first case of an outbreak and the implementation of a
326 vaccination campaign will determine how a vaccine will fare. We model react times in
327 2-day intervals between 0 and 28 days and assume it takes 14 days for the vaccine to
328 elicit an immune response.

329

330 In the ideal reactive scenario, with a 100% efficacious vaccine with instant
331 implementation, vaccinating all healthcare workers in response to the first case at
332 hospital level would avert 59% (95% CrI: 51% - 68%) of cases and 48% (95% CrI:
333 38% - 58%) of deaths. Since healthcare workers constituted only 28% of cases, this
334 discrepancy illustrates the disproportionate effect of removing downstream cases
335 [Figure 5].

336



337

338 **Figure 5:** Mean posterior estimates for reactive campaigns of the proportion of cases averted,
 339 as a function of vaccine efficacy and react time. **Left, centre and right** columns show
 340 campaigns reactive at hospital, regional and national level. **Top, middle and bottom** rows
 341 show reactive campaigns in tandem with camel control measures of 0%, 30% and 50%
 342 respectively.

343

344 If a react time of 14 days is assumed, impact falls to 53% (95% CrI: 43% - 62%) of
 345 cases and 42% (95% CrI: 32% - 51%) of deaths, and for a 28-day react time falls
 346 further to 51% (95% CrI: 41% - 61%) of cases and 41% (95% CrI: 30% - 51%) of
 347 deaths. A vaccine efficacy of 50% with react times zero, 14 and 28 days would
 348 respectively reduce cases by 41% (95% CrI: 28% - 55%), 36% (95% CrI: 24% - 51%),

349 and 35% (95% CrI: 22% - 50%) [Figure 5], and deaths by 32% (95% CrI: 18% - 46%),
350 28% (95% CrI: 16% - 42%), and 27% (95% CrI: 15% - 42%) [Figure S5]. For reactive
351 campaigns at hospital level, react times beyond approximately 10 days are irrelevant,
352 and success is a function of efficacy only. Lower and upper credible intervals are
353 shown in Figures S6-S7, showing wide ranges in impact, as observed for proactive
354 campaigns.

355

356 Greater impact can be achieved where a campaign reacts at regional level [Figure 5],
357 where react times matter less than for hospital-level reactions. A perfect vaccine
358 deployed instantaneously to healthcare workers would achieve a 69% (95% CrI: 61%
359 - 77%) reduction in cases and a 55% (95% CrI: 44% - 67%) reduction in deaths.
360 Assuming a 14-day react time, this falls to 66% (95% CrI: 58% - 74%) of cases and
361 51% (95% CrI: 41% - 62%) of deaths, and a 28-day react time reduces 65% (95% CrI:
362 58% - 73%) of cases and 50% (95% CrI: 41% - 62%) of deaths. Therefore, the react
363 time makes less difference than at hospital level. Reacting at national level offers little
364 further improvement [Figure 5], although interestingly the impact is the same
365 regardless of whether the react time takes zero, 14 or 28 days, reducing cases by 69%
366 (95% CrI: 61% - 77%) and deaths by 55% (95% CrI: 45% - 67%) in each instance.

367

368 The above national-level reductions are the best that can be achieved from reactive
369 campaigns without camel control measures. For 30% effective camel controls, this
370 maximum impact increases to 78% (95% CrI: 68% - 88%) of cases and 68% (95% CrI:
371 54% - 84%) of deaths averted, whereas with 50% effective camel controls, 84% (95%
372 CrI: 74% - 93%) of cases and 78% (95% CrI: 62% - 91%) of deaths can be averted.

373 Again, these results are insensitive to whether the national-level react time is zero
374 days, 14 days, or 28 days.

375

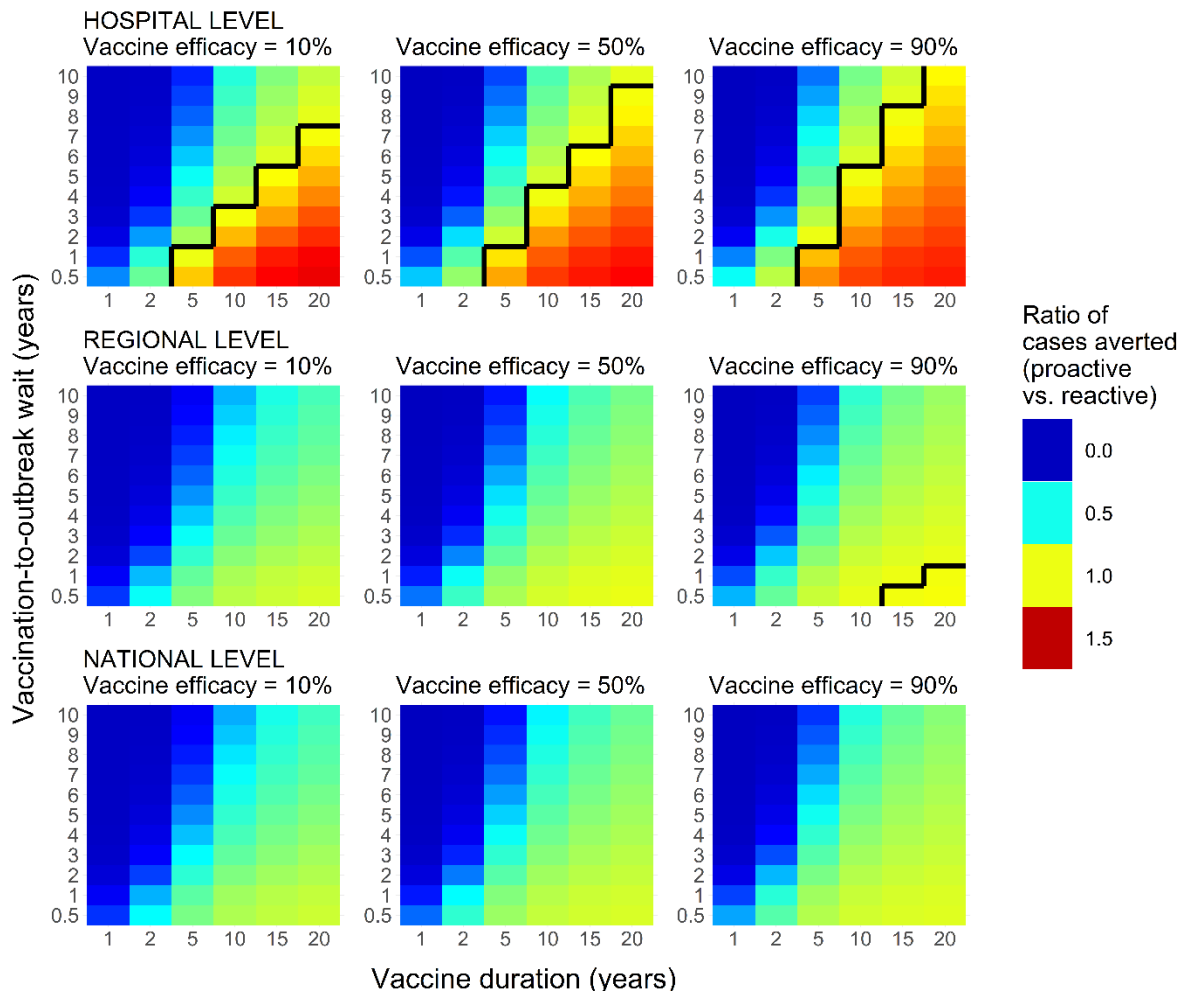
376 The gains that can be achieved from reacting at regional or national level versus
377 hospital level vary by efficacy and react time [Figure S8]. On average, across all
378 efficacies and react times considered, regional and national level reactions offer a 31%
379 and 34% improvement over hospital level reactions. The level at which a reactive
380 campaign takes place is more important for longer react times. For example, there are
381 greater differences (and ratios) between regional and hospital level reactions for an
382 implementation that takes 28-day react time than for an instantaneous implementation.
383 Broadly, the ratio of cases averted between reactive campaign levels decreases with
384 efficacy, although this is mostly due to the limited impact of hospital-based reactive
385 campaigns with low efficacy. However, the absolute difference increases with efficacy.
386 At very long react times, national offers a slight improvement over regional and is
387 approximately 5% better for efficacies above e.g. 60% [Figure S8]. Trends are largely
388 the same for the number of deaths averted.

389

390 [Proactive vs. reactive campaigns](#)

391 Figure 6 shows the ratios of cases averted between proactive and reactive campaigns.
392 If vaccine efficacy does not wane, then the wait time until the next outbreak is
393 irrelevant, and so proactive campaigns will always outperform reactive campaigns.
394 Otherwise, a regional level reactive campaign with a 28-day react time is far superior
395 to a proactive campaign, except where both vaccine duration is long (≥ 15 years) and
396 the wait is short (≤ 1 year). National-level reactive campaigns were superior to

397 proactive campaigns in every scenario we considered. Proactive campaigns require
398 less stringent conditions to outperform hospital-level reactive campaigns, although
399 even here reactive campaigns are superior in approximately half our simulations
400 [Figure 6], and more often if the react time is reduced to say 8 days [Figure S9].



401
402 **Figure 6.** Each plot shows the ratio of cases averted between proactive and reactive (regional)
403 campaigns (proactive / reactive), varying with duration of protection and wait until outbreak
404 after vaccination. Proactive campaigns are compared to reactive campaigns at hospital level
405 (top row), regional level (middle row) and national level (bottom row). Left to right columns
406 show vaccine efficacies of 10%, 50% and 90%. A react time of 28 days is assumed in all plots,
407 as well as a 14-day lag between vaccination and immunity. Ratios less than 1 (left of black
408 contour line) indicate that a reactive campaign averts more cases.

409

410 The above trends hold almost irrespective of vaccine efficacy. Trends are also
411 relatively insensitive to camel control measure effectiveness [Figure S10], although as
412 their effectiveness increases, there is less proportional difference between proactive
413 and reactive campaigns. Trends further hold when considering the ratio of deaths
414 averted [Figure S11], although hospital- and regional-level campaigns outperform
415 proactive slightly less often.

416

417 There is an asymmetry in the relative performance of proactive and reactive
418 campaigns (if the vaccine does not retain its efficacy permanently). Assuming 10%
419 vaccine efficacy, proactive campaigns can at best avert 39% more cases than
420 hospital-level reactive campaigns, or 31% more cases assuming 90% efficacy.
421 However, regional and national reactive campaigns of a 10% efficacious vaccine can
422 respectively avert approximately 97 and 100 times more cases than a proactive
423 campaign, or 421 and 444 times more if vaccine efficacy of 90% is assumed, albeit
424 with the important caveat that the very poor performance of proactive campaigns with
425 short duration and long wait results in very small numbers being compared.

426

427 [Change in transmission type](#)

428 Figures S12 and S13 respectively show the change in relative and absolute
429 transmission contribution with vaccine efficacy for a number of example scenarios.
430 Without human vaccination, interventions targeting only the animal reservoir simply
431 reduce overall case numbers, and do not change the proportional contributions of each
432 transmission type (nosocomial, regional, national and reservoir). Otherwise, the

433 change in transmission proportions with efficacy is highly similar between strategies.
434 Nosocomial transmission decreases with vaccine efficacy from approximately 60% to
435 between approximately 45% and 50%, depending on the specific strategy.
436 Transmission within hospital, region and nationally goes down and therefore relative
437 contribution of animal reservoir goes up (approximately 12% of cases without
438 vaccination rising to as much as 30% depending on the strategy) [Figure S12]. Trends
439 in absolute case numbers also do not differ markedly between vaccination strategies
440 [Figure S13], although regional reactive campaigns avert more nosocomial, regional
441 and national transmission than hospital level reactive campaigns.

442

443 [Sensitivity analyses](#)

444 We investigated the sensitivity of our results to the choice of vaccine waning model.
445 Our main analysis considers waning of immunity to be exponential. However it may
446 be that a slower decline with a sigmoidal function, would be more appropriate. We
447 therefore reran our analysis of proactive campaigns using a Hill function [Figure 1],
448 considering the vaccine's half-life as opposed to its mean duration.

449

450 The relationships between the proportion of cases averted and efficacy, duration (in
451 this instance half-life), and the wait until the next outbreak are largely the same as for
452 our default exponential waning model [Figure S14], although longer half-lives (>5
453 years) perform slightly better and shorter half-lives (<5 years) perform slightly worse.
454 In general though, the predicted impact of proactive campaigns is marginally greater
455 when considering sigmoidal waning.

456

457 Assuming sigmoidal waning affects the relative performance of reactive and proactive
458 campaigns [Figure S15]. Hospital- and regional-level reactive campaigns are more
459 often eclipsed by proactive campaigns. However, nationally reactive campaigns are
460 still superior to proactive campaigns in almost all simulations. Trends are again
461 consistent across different values of vaccine efficacy, and with camel control
462 effectiveness (not shown). Our results are reasonably robust to the choice of waning
463 model.

464

465 We were further concerned that the timeframe under consideration could bias our
466 comparison of reactive and proactive campaigns. If a campaign reacts to cases
467 (whether at hospital, regional or national level) in 2013, then there is ample time to
468 react before the majority of cases occur during 2014 [Figure 2]. Figures S16-S18 show
469 the comparison between reactive and proactive campaigns after dividing the entire
470 Jan 2013 – Jul 2014 dataset into three subsets (i) Jan-Jun 2013; ii) Jul-Dec 2013, and
471 iii) Jan-Jul 2014). For all three subsets, any advantages previously enjoyed by
472 hospital-level reactive campaigns against proactive suffer substantially, regardless of
473 efficacy: proactive campaigns are usually better, except for short durations and long
474 waits between vaccination and the next outbreak. Regional-level reactive campaigns
475 are affected less consistently: they fare worse for each 2013 data subset, but are
476 almost identical for the 2014 subset. However, campaigns that react at national level
477 consistently outperform proactive campaigns, almost regardless of the timeframe
478 considered, although there is little difference between proactive and reactive
479 campaigns here.

480

481 It is important to note that where ratios are high, and therefore where proactive
482 campaigns ostensibly avert many times the cases than reactive campaigns, there are
483 very few cases to avert in the first place, particularly among healthcare workers [Figure
484 2]. Therefore, in situations where there are most cases where a vaccine is most
485 needed, reactive policies at national level are best.

486

487 Discussion

488 No vaccine against MERS-CoV has yet been licensed in humans. If and when such a
489 vaccine becomes available, determining its optimal deployment is nontrivial. In this
490 study, we analysed multiple vaccine campaign strategies as a function of efficacy and
491 duration. Each strategy was evaluated by estimating multiple transmission trees (who-
492 infected-whom), and then “pruning” them to generate counterfactual epidemics to
493 determine the number of cases and deaths that a vaccine would prevent. Our intention
494 is that all strategies considered could at least in principle be implemented, and
495 therefore that our analysis will be relevant for policymakers. We considered
496 vaccination of healthcare workers only, as they will be most easily vaccinated and
497 most exposed, and therefore more cost-effective.

498

499 We considered the relative merits of proactive and reactive campaigns, where the
500 fundamental difference between the two approaches is whether to vaccinate in
501 anticipation of the next outbreak, or in response to the current outbreak. The success
502 of a proactive campaign is a function of vaccine efficacy, duration and the wait time

503 between vaccination and the next outbreak. Whereas for reactive campaigns, success
504 is dependent on efficacy, react time and the spatial level at which a vaccination
505 campaign reacts: in response to a hospital, regional or national outbreak. In all
506 scenarios examined, vaccination has a greater effect on cases than deaths, likely
507 because healthcare workers firstly constitute only 27% of cases, and secondly
508 because they are younger than non-healthcare workers (mean age 39 vs. 51 years)
509 and so are probably healthier.

510

511 Short durations or long waits (or both) greatly diminish the impact of a proactive
512 campaign. While the wait time until the next major outbreak cannot be known in
513 advance, still less its magnitude, given that the 2013-2014 KSA MERS-CoV outbreak
514 was the only one of its scale [31], it is reasonable to think that the wait until the next
515 large outbreak will be long. In contrast, we have not modelled reactive campaigns to
516 depend on the vaccine's duration, and so vaccinees are conferred maximum possible
517 benefit, provided that vaccines can be administered and elicit an immune response
518 before people would otherwise be infected.

519

520 Therefore, the spatial scale at which a campaign reacts is crucial. If each hospital
521 reacts individually to its own outbreak, many cases (and their secondary cases) occur
522 before vaccination or immunity. However, campaigns that react at regional or national
523 level suffer far less from these delays and therefore can avert many more cases than
524 their proactive equivalents, even where the time until the next outbreak is short and
525 durations are long (although proactive campaigns are always better than reactive if
526 vaccine efficacy does not wane). Interestingly, the relative performance of reactive and

527 proactive campaigns does not depend on efficacy, and the introduction of measures
528 to limit transmission from the animal reservoir does not affect the rank order of
529 campaigns. Essentially, regionally and nationally reactive campaigns offer an
530 opportunity to get ahead of the epidemic, and can be viewed as a proactive campaign
531 but with a more certain and shorter wait time.

532

533 Our analysis is reasonably robust to whether vaccine waning is exponential or
534 sigmoidal, but more sensitive to the choice of timeframe, in that hospital-level reactive
535 campaigns are rarely superior to proactive. However, our main conclusions firstly that
536 the spatial scale at which a vaccination campaign reacts is crucial, and secondly that
537 nationally reactive campaigns are campaigns are the most effective way to reduce
538 MERS-CoV case numbers and deaths, are strengthened. Further, focussing on the
539 impact on a single smaller outbreak slightly misses the point: we are ultimately most
540 interested in the maximum possible morbidity and mortality reductions over the widest
541 possible timeframe. In effect this blurs the distinction between reactive and proactive
542 campaigns: a reactive campaign against one outbreak can also be considered as a
543 proactive campaign against a subsequent outbreak.

544

545 We are aware of some limitations in our analysis. We assume that all downstream
546 cases of a successfully inoculated person are deleted, and this is unlikely to be
547 completely true for two reasons. First, if downstream cases had not been infected by
548 their index case, they may still have been infected through another route. Second, the
549 vaccine may have differing efficacies against disease and transmission. A vaccine that
550 inoculates against disease may not stop transmission or vice-versa. Additionally, we

551 assume there is no age-dependency in vaccine efficacy, and recent experience with
552 SARS-CoV-2 vaccines suggests that that some age-dependency is likely [32-34].
553 While properly accounting for these issues would improve our estimates, we do not
554 have any data to inform such analysis, and so any attempt to do so would be overly
555 speculative.

556

557 It is also possible that some sub-clinical infections were not detected, and are therefore
558 missing from our line list. If such cases contributed meaningfully to transmission, then
559 our results could be biased upwards, and arguably more so for reactive campaigns,
560 as reactive campaigns might not react to index case in a hospital or region or country.
561 We have also not accounted for any behavioural change or risk compensation in
562 response to an available vaccine.

563

564 In considering camel control measures, we have assumed only a simple proportional
565 reduction in contribution from animal reservoir, without specifying what this would
566 entail (e.g. vaccination, better hygiene, or reduced physical contact between humans
567 and camels), and clearly additional data to inform more precise analysis would be
568 helpful.

569

570 To reduce the otherwise prohibitively large number of simulations, we have assumed
571 no vaccine waning under reactive campaigns. However, unless duration was very
572 short the effects of waning would be negligible, and in this instance, waning would still
573 affect reactive campaigns less than proactive campaigns. On the other hand, we
574 assume zero immunity until 14 days post vaccination, whereas in practice there would

575 be at least some protection prior to this. Greater delays between vaccination and
576 immunity would affect our results, but not the trends we describe, and would
577 essentially constitute a relabelling (e.g. if the time was 10 or 18 days, the react times
578 we list must be decreased or increased respectively by 4 days).

579

580 Because MERS-CoV outbreaks are relatively infrequent, traditional randomised
581 controlled trials may not be feasible [35], and therefore vaccine efficacy or its wider
582 effectiveness may be difficult to measure empirically, and this is even more so with the
583 vaccine's duration of protection. It is therefore useful to have an indication of the most
584 effective strategies even if values of efficacy and duration are unknown. Unless the
585 vaccine maintains its efficacy for a long time (>20 years) a reactive campaign at
586 regional or national level will usually be superior to a proactive campaign.

587

588 Our analysis demonstrates that substantial reduction of MERS-CoV cases and deaths
589 is possible even when vaccinating healthcare workers only, and underlines the need
590 for countries at risk of MERS-CoV outbreaks to have reasonably large stockpiles of
591 vaccines when they become available.

592

593 [Data sharing statement / Code availability](#)

594 All model code, (anonymised) data, and precompiled binaries are available at
595 https://github.com/dlaydon/MERS_VacTrees.

596

597 Acknowledgements

598 DJL, WRH, SB and NMF acknowledge joint Centre funding from the UK Medical
599 Research Council and Department for International Development (grant
600 MR/R015600/1). DJL and NMF acknowledge funding from Vaccine Efficacy
601 Evaluation for Priority Emerging Diseases (VEEPED) grant, (ref. NIHR: PR-OD-1017-
602 20002) from the National Institute for Health Research. SB acknowledges The UK
603 Research and Innovation (MR/V038109/1), the Academy of Medical Sciences
604 Springboard Award (SBF004/1080), The BMGF (OPP1197730), Imperial College
605 Healthcare NHS TrustBRC Funding (RDA02), The Novo Nordisk Young Investigator
606 Award (NNF20OC0059309) and The NIHR Health Protection Research Unit in
607 Modelling Methodology. SC acknowledges financial support from the Investissement
608 d'Avenir program, the Laboratoire d'Excellence Integrative Biology of Emerging
609 Infectious Diseases program (grant ANR-10-LABX-62-IBEID) and the INCEPTION
610 project (PIA/ANR-16-CONV-0005). Views expressed do not necessarily represent
611 those of the funders.

612

613 Tables

614 **Table 1.** Modelled vaccination campaign strategies.

Description (Symbol)	Values simulated / Comments
Initial vaccine efficacy (VE)	Between 5% and 100% in intervals of 5%
Camel control measure effectiveness (ζ)	10%, 20%, 30%, 40%, 50% and 0% (i.e. no measures targeting animal reservoir),
Proactive	
Mean duration (D) / Half-life (Y)	1, 2, 5, 10, 15, 20-year duration (or half-life if considering sigmoidal waning) and infinite duration (i.e. no vaccine waning)
Wait between vaccination and next outbreak (t^*)	1 year to 10 years, and 6 months.
Reactive	
Spatial reaction level for reactive campaign	i) hospital; ii) regional; iii) national
React time (τ_r)	0 to 28 days in 2-day intervals, between start of (hospital, regional or national) outbreak and vaccination
Time between vaccination and immunity (τ_p)	14 days (zero immunity assumed between 0 and 13 days post vaccination)

615

616

References

617

- 618 1. Park J-E, Jung S, Kim A, Park J-E. MERS transmission and risk factors: a systematic review.
619 BMC Public Health. 2018;18(1):574. doi: 10.1186/s12889-018-5484-8.
- 620 2. Ramadan N, Shaib H. Middle East respiratory syndrome coronavirus (MERS-CoV): A review.
621 Germs. 2019;9(1):35-42. doi: 10.18683/germs.2019.1155. PubMed PMID: 31119115.
- 622 3. Zaki AM, van Boheemen S, Bestebroer TM, Osterhaus ADME, Fouchier RAM. Isolation of a
623 Novel Coronavirus from a Man with Pneumonia in Saudi Arabia. 2012;367(19):1814-20. doi:
624 10.1056/NEJMoa1211721. PubMed PMID: 23075143.
- 625 4. Food and Agriculture Organization of the United Nations: MERS situation update 2022.
626 Available from: https://www.fao.org/ag/againfo/programmes/en/empres/mers/situation_update.html.
- 627 5. Cauchemez S, Van Kerkhove MD, Riley S, Donnelly CA, Fraser C, Ferguson NM. Transmission
628 scenarios for Middle East Respiratory Syndrome Coronavirus (MERS-CoV) and how to tell them apart.
629 2013;18(24):20503. doi: <https://doi.org/10.2807/ese.18.24.20503-en>.
- 630 6. Cauchemez S, Nouvellet P, Cori A, Jombart T, Garske T, Clapham H, et al. Unraveling the
631 drivers of MERS-CoV transmission. 2016;113(32):9081-6.
- 632 7. Dighe A, Jombart T, Van Kerkhove MD, Ferguson NJE. A systematic review of MERS-CoV
633 seroprevalence and RNA prevalence in dromedary camels: Implications for animal vaccination.
634 2019;29:100350.
- 635 8. Aguanno R, Elidrissi A, Elkholy AA, Ben Embarek P, Gardner E, Grant R, et al. MERS: Progress
636 on the global response, remaining challenges and the way forward. Antiviral Research. 2018;159:35-
637 44. doi: <https://doi.org/10.1016/j.antiviral.2018.09.002>.
- 638 9. Cowling BJ, Park M, Fang VJ, Wu P, Leung GM, Wu JT. Preliminary epidemiological
639 assessment of MERS-CoV outbreak in South Korea, May to June 2015. 2015;20(25):21163. doi:
640 <https://doi.org/10.2807/1560-7917.ES2015.20.25.21163>.
- 641 10. Lessler J, Salje H, Van Kerkhove MD, Ferguson NM, Cauchemez S, Rodriguez-Barraquer I, et
642 al. Estimating the Severity and Subclinical Burden of Middle East Respiratory Syndrome Coronavirus
643 Infection in the Kingdom of Saudi Arabia. American Journal of Epidemiology. 2016;183(7):657-63. doi:
644 10.1093/aje/kwv452.
- 645 11. Verity R, Okell LC, Dorigatti I, Winskill P, Whittaker C, Imai N, et al. Estimates of the severity of
646 coronavirus disease 2019: a model-based analysis. 2020;20(6):669-77.
- 647 12. Savvides C, Siegel R. Asymptomatic and presymptomatic transmission of SARS-CoV-2: A
648 systematic review. medRxiv. 2020:2020.06.11.20129072. doi: 10.1101/2020.06.11.20129072. PubMed
649 PMID: 32587980.
- 650 13. Cauchemez S, Fraser C, Van Kerkhove MD, Donnelly CA, Riley S, Rambaut A, et al. Middle
651 East respiratory syndrome coronavirus: quantification of the extent of the epidemic, surveillance biases,
652 and transmissibility. Lancet Infect Dis. 2014;14(1):50-6. Epub 2013/11/13. doi: 10.1016/S1473-
653 3099(13)70304-9. PubMed PMID: 24239323.

- 654 14. van Doremalen N, Haddock E, Feldmann F, Meade-White K, Bushmaker T, Fischer RJ, et al.
655 A single dose of ChAdOx1 MERS provides protective immunity in rhesus macaques.
656 2020;6(24):eaba8399.
- 657 15. Muthumani K, Falzarano D, Reuschel EL, Tingey C, Flingai S, Villarreal DO, et al. A synthetic
658 consensus anti-spike protein DNA vaccine induces protective immunity against Middle East respiratory
659 syndrome coronavirus in nonhuman primates. 2015;7(301):301ra132-301ra132.
- 660 16. Lan J, Yao Y, Deng Y, Chen H, Lu G, Wang W, et al. Recombinant receptor binding domain
661 protein induces partial protective immunity in rhesus macaques against Middle East respiratory
662 syndrome coronavirus challenge. 2015;2(10):1438-46.
- 663 17. Wang L, Shi W, Joyce MG, Modjarrad K, Zhang Y, Leung K, et al. Evaluation of candidate
664 vaccine approaches for MERS-CoV. 2015;6(1):1-11.
- 665 18. Wang C, Zheng X, Gai W, Zhao Y, Wang H, Wang H, et al. MERS-CoV virus-like particles
666 produced in insect cells induce specific humoral and cellular immunity in rhesus macaques.
667 2017;8(8):12686.
- 668 19. Bosaeed M, Balkhy HH, Almaziad S, Aljami HA, Alhatmi H, Alanazi H, et al. Safety and
669 immunogenicity of ChAdOx1 MERS vaccine candidate in healthy Middle Eastern adults (MERS002):
670 an open-label, non-randomised, dose-escalation, phase 1b trial. 2021.
- 671 20. Smith TRF, Patel A, Ramos S, Elwood D, Zhu X, Yan J, et al. Immunogenicity of a DNA vaccine
672 candidate for COVID-19. Nature Communications. 2020;11(1):2601. doi: 10.1038/s41467-020-16505-
673 0.
- 674 21. CEPI Vaccine Portfolio. Available from: https://cepi.net/research_dev/our-portfolio/.
- 675 22. Chemaitelly H, Tang P, Hasan MR, AlMukdad S, Yassine HM, Benslimane FM, et al. Waning
676 of BNT162b2 vaccine protection against SARS-CoV-2 infection in Qatar. 2021.
- 677 23. Feikin D, Higdon MM, Abu-Raddad LJ, Andrews N, Araos R, Goldberg Y, et al. Duration of
678 effectiveness of vaccines against SARS-CoV-2 infection and COVID-19 Disease: results of a
679 systematic review and meta-regression. 2021.
- 680 24. Andrews N, Tessier E, Stowe J, Gower C, Kirsebom F, Simmons R, et al. Duration of Protection
681 against Mild and Severe Disease by Covid-19 Vaccines. 2022. doi: 10.1056/NEJMoa2115481.
- 682 25. Goldberg Y, Mandel M, Bar-On YM, Bodenheimer O, Freedman L, Haas EJ, et al. Waning
683 Immunity after the BNT162b2 Vaccine in Israel. 2021;385(24):e85. doi: 10.1056/NEJMoa2114228.
- 684 26. Tartof SY, Slezak JM, Fischer H, Hong V, Ackerson BK, Ranasinghe ON, et al. Effectiveness
685 of mRNA BNT162b2 COVID-19 vaccine up to 6 months in a large integrated health system in the USA:
686 a retrospective cohort study. 2021;398(10309):1407-16.
- 687 27. Lipsitch M, Krammer F, Regev-Yochay G, Lustig Y, Balicer RDJNRI. SARS-CoV-2
688 breakthrough infections in vaccinated individuals: measurement, causes and impact. 2021:1-9.
- 689 28. Team RCJRFfSC. R: A language and environment for statistical computing (Version 4.0.
690 5)[Programming language]. 2021.
- 691 29. Wickham H, Chang W, Wickham MHJCEDVUtGoGV. Package 'ggplot2'. 2016;2(1):1-189.
- 692 30. Csardi MGJLa. Package 'igraph'. 2013;3(09):2013.

- 693 31. WHO Middle East respiratory syndrome coronavirus (MERS-CoV) 2022. Available from:
694 https://www.who.int/health-topics/middle-east-respiratory-syndrome-coronavirus-mers#tab=tab_1.
- 695 32. Baden LR, El Sahly HM, Essink B, Kotloff K, Frey S, Novak R, et al. Efficacy and safety of the
696 mRNA-1273 SARS-CoV-2 vaccine. 2021;384(5):403-16.
- 697 33. Collier DA, Ferreira IA, Kotagiri P, Datir RP, Lim EY, Touizer E, et al. Age-related immune
698 response heterogeneity to SARS-CoV-2 vaccine BNT162b2. 2021;596(7872):417-22.
- 699 34. Haas EJ, Angulo FJ, McLaughlin JM, Anis E, Singer SR, Khan F, et al. Impact and effectiveness
700 of mRNA BNT162b2 vaccine against SARS-CoV-2 infections and COVID-19 cases, hospitalisations,
701 and deaths following a nationwide vaccination campaign in Israel: an observational study using national
702 surveillance data. 2021;397(10287):1819-29.
- 703 35. Nikolay B, Ribeiro dos Santos G, Lipsitch M, Rahman M, Luby SP, Salje H, et al. Assessing
704 the feasibility of Nipah vaccine efficacy trials based on previous outbreaks in Bangladesh. *Vaccine*.
705 2021;39(39):5600-6. doi: <https://doi.org/10.1016/j.vaccine.2021.08.027>.

706

707

708 Supplementary Methods

709

710 Transmission tree inference

711 Parameter inference

712 The following has been presented previously [6], but is described here for ease of
713 reference. MERS-CoV cases are partitioned into clusters, where we define a cluster
714 as a group of cases from the same hospital, where the time lag between consecutive
715 cases is at most 21 days. Let ω_s denote the proportion of secondary cases with onset
716 s days after the onset of their infector (i.e. the serial interval). ω_s is assumed to be
717 Gamma distributed and its mean and standard deviation are inferred from the data.

718

719 The MERS-CoV reproduction number is divided into three mutually exclusive parts: i)
720 within-cluster; ii) between-cluster and within-region; iii) between-region. $R^c_C(m)$
721 denotes the within-cluster reproduction number $R^c_C(0)$ for cluster c after m cases, and
722 its initial value $R^c_C(0)$ is drawn from a gamma distribution with mean R_c and standard
723 deviation σ_c . $R^c_C(m)$ is given by $R^c_C(m) = R^c_C(0)(1+m)^{-\gamma}$, where γ is a fitted parameter
724 that describes the decline in the reproduction number with the number of cumulative
725 cases, either due to infection control measures or to the depletion of susceptible
726 individuals.

727

728 The mean number of animal reservoir infections α_t on day t is given by $\alpha_t = E_0 \exp(\alpha t)$,
729 where E_0 is the initial number of reservoir infections at the beginning of the study period
730 (i.e. January 1, 2013), and α is the (positive or negative) growth rate.

731

732 If case $k \in \mathbb{N}$ has infector $i(k) \in \mathbb{N}$, and is a member of cluster and region c_k and q_k
 733 respectively, then the individual reproduction numbers at within-cluster, between
 734 cluster and between-region level are given by

$$735 \quad R_{C,k} = \sum_{j:c_j=c_k} \delta(i(j)=k) \quad (\text{within-cluster})$$

$$736 \quad R_{R,k} = \sum_{j:c_j \neq c_k, q_j=q_k} \delta(i(j)=k) \quad (\text{between-cluster and within-region})$$

$$737 \quad R_{O,k} = \sum_{j:q_j \neq q_k} \delta(i(j)=k) \quad (\text{between-region})$$

738 where $\delta(i(j)=k) = 1$ if $i(k) = j$ and 0 otherwise. We set $i(k) = 0$ if the k^{th} case was infected
 739 by the animal reservoir. Therefore the number of introductions I_t on day t is given by

$$740 \quad I_t = \sum_{j:t_j=t} \delta(i(j)=0).$$

741

742 The likelihood L is composed of three terms concerning: i) transmission between
 743 cases L_k^{trans} ; ii) animal reservoir introduction L_t^{intro} ; and iii) heterogeneity of
 744 transmission intensity between clusters L^{cluster} .

745

746 L_k^{trans} is given by

$$747 \quad \begin{aligned} L_k^{\text{trans}} &= P_{\text{Pois}}(R_{C,k} | R_C^{c_k}(m_{c_k}(t_k))) \times P_{\text{Pois}}(R_{R,k} | R_R) \times P_{\text{Pois}}(R_{O,k} | R_O) \\ &\times (H_{q_k} - 1)^{-R_{R,k}} (H - H_{q_k})^{-R_{O,k}} \\ &\times \prod_{j:i(j)=k} \omega(t_j - t_k) \end{aligned}$$

748 where H denotes the total number of hospitals in the data, and H_q is the number of
 749 hospitals in region q . The first line of L_k^{trans} gives the probabilities of observing
 750 secondary cases arising from within-cluster, between-cluster and within-region, and
 751 between-region transmission. The second line of L_k^{trans} gives the probabilities that a
 752 secondary case outside of case k 's hospital will be in another hospital within region
 753 and outside region q_k . The third line of L_k^{trans} gives the density of the serial interval.

754 The likelihood L_t^{intro} that there were I_t infections from the animal reservoir on day t is

$$755 \quad L_t^{intro} = P_{\text{Pois}}(I_t | \alpha_t) H^{-I_t}$$

756 and the likelihood $L^{cluster}$ of the heterogeneity of transmission intensity is a product over
 757 clusters

$$758 \quad L^{cluster} = \prod_c P_{\text{Gamma}}(R_C^c(0) | R_C, \sigma_C).$$

759 The full likelihood L is a product of the above terms

$$760 \quad L = L^{cluster} \prod_k L_k^{trans} \prod_t L_t^{intro}$$

761

762 Data augmentation

763 In practice, the infector of each case is unknown, and so we use data augmentation
 764 and infer the joint posterior distribution of the parameters and infectors. For each
 765 possible source of infection k to case j , we define the following weights w_k :

$$766 \quad w_{k,j} = \begin{cases} R_C \omega(t_j - t_k) & c_k = c_j \\ R_R \omega(t_j - t_k) & c_k \neq c_j \text{ and } q_k = q_j \\ R_O \omega(t_j - t_k) & q_k \neq q_j \\ \beta & k = 0 \text{ (reservoir)} \end{cases}$$

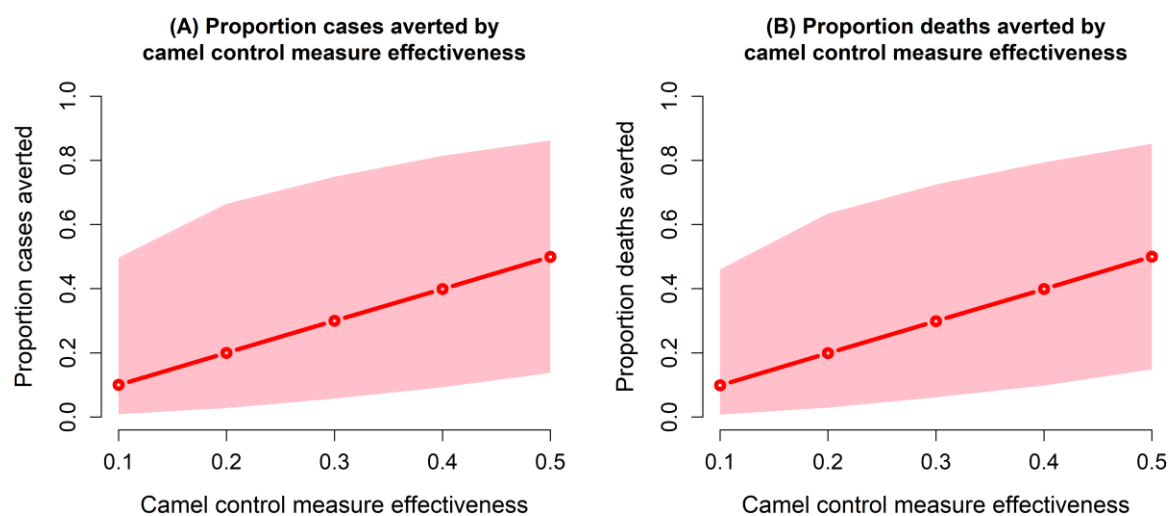
767 where $\beta = 0.05$. The above weights are normalised so that the probability $p_{k,j}$ that case
768 j had infector k is given by

769
$$p_{k,j} = w_{k,j} / \sum_l w_{l,j} .$$

770

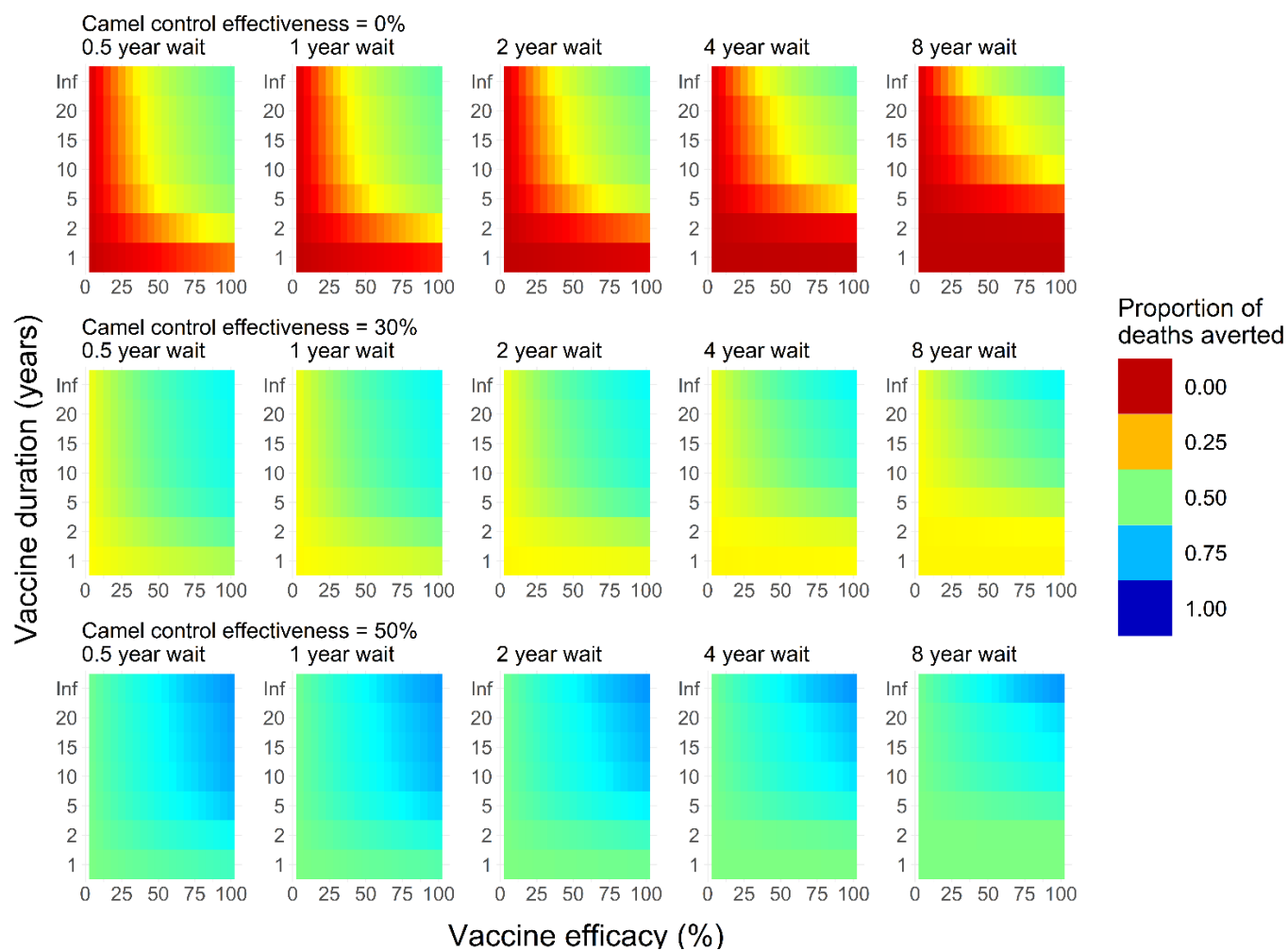
771 Supplementary Figures

772



773

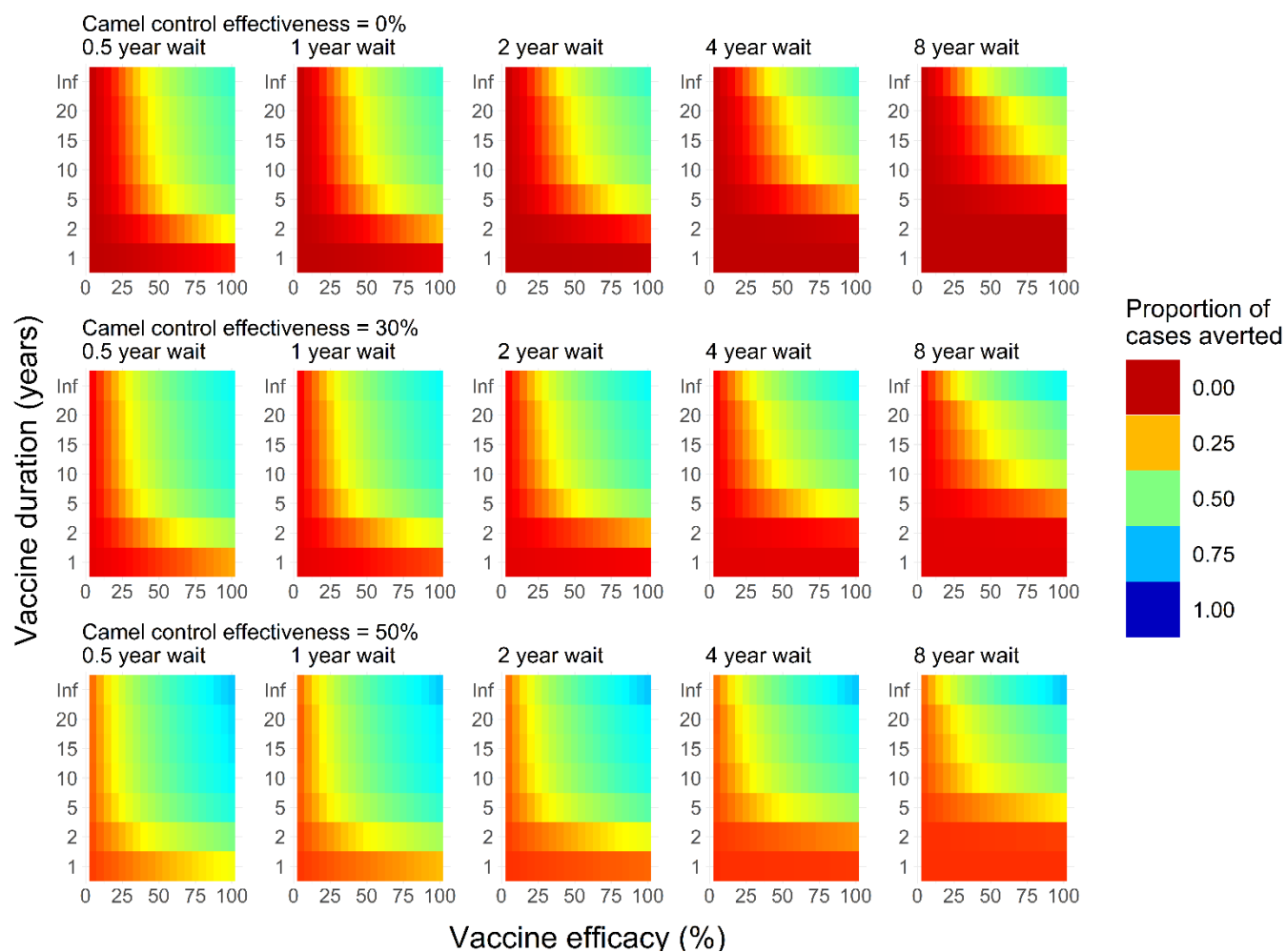
774 **Figure S1.** Proportions of cases (A) and deaths (B) averted with effectiveness of
775 camel control measures. Mean proportion in red and 95% credible intervals shown in
776 pink.



777

778 **Figure S2.** As per Figure 4, but each plot shows the mean posterior estimate of the
779 proportion of deaths averted.

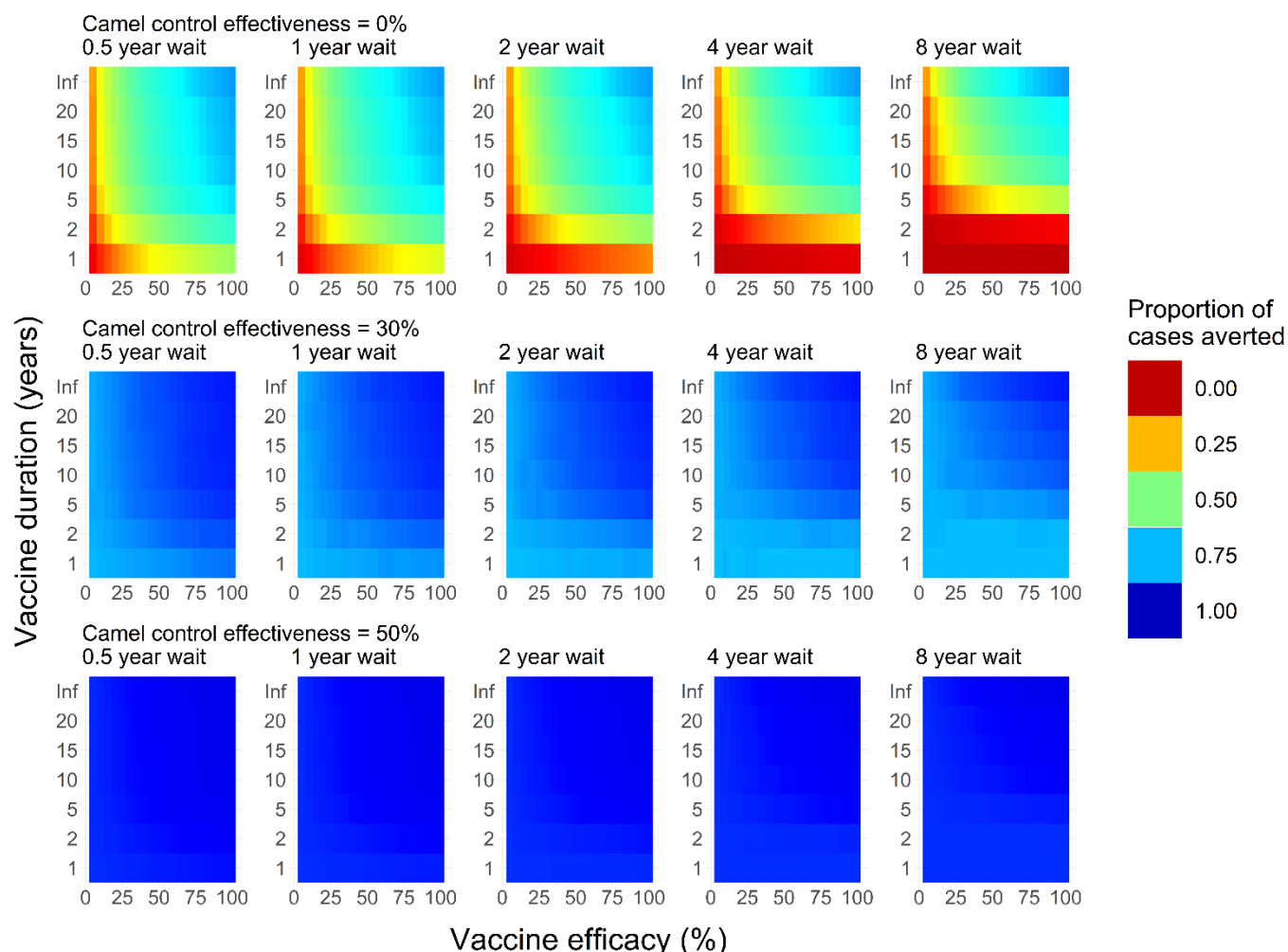
780



781

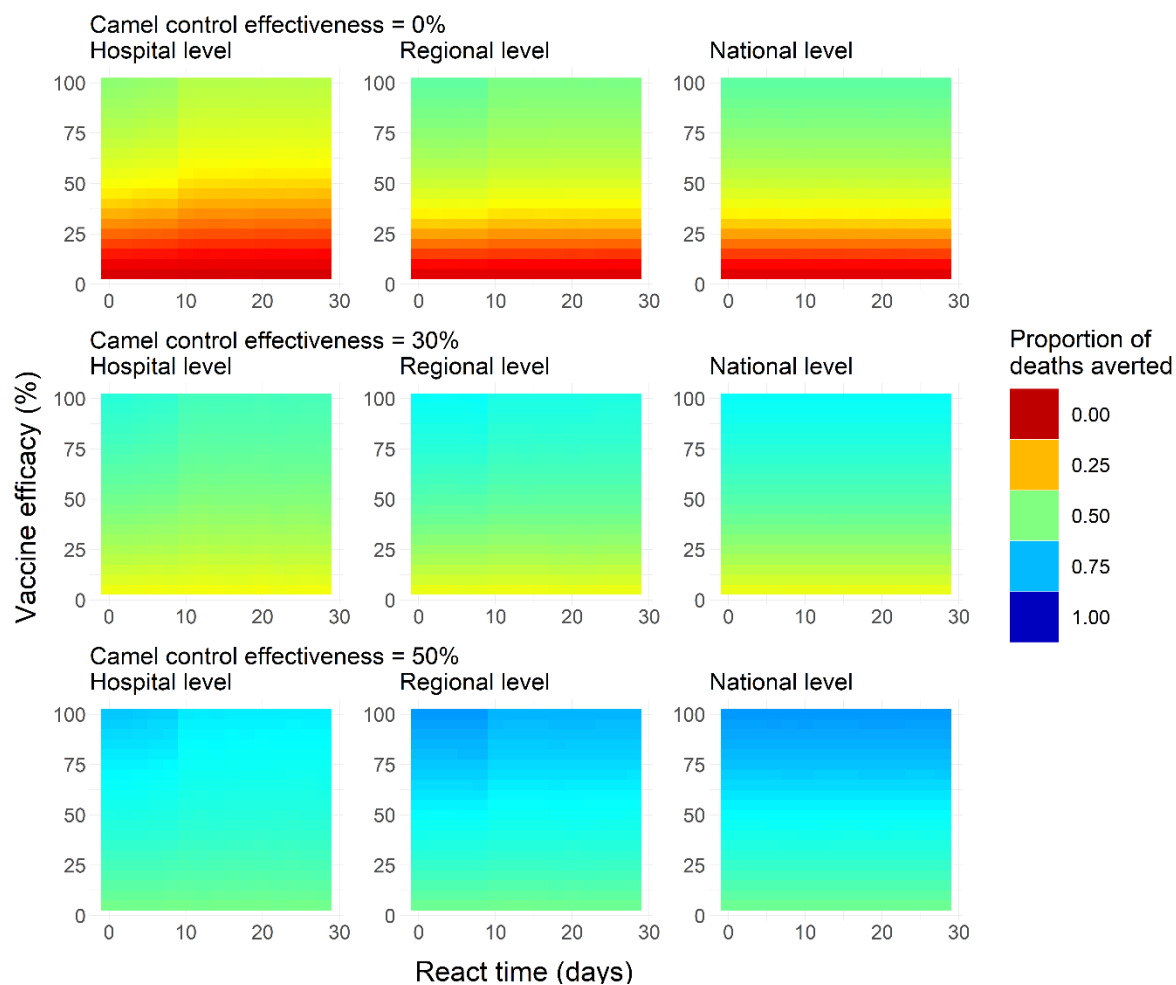
782 **Figure S3.** As per Figure 4, but showing lower credible intervals of the proportion of
783 cases averted.

784



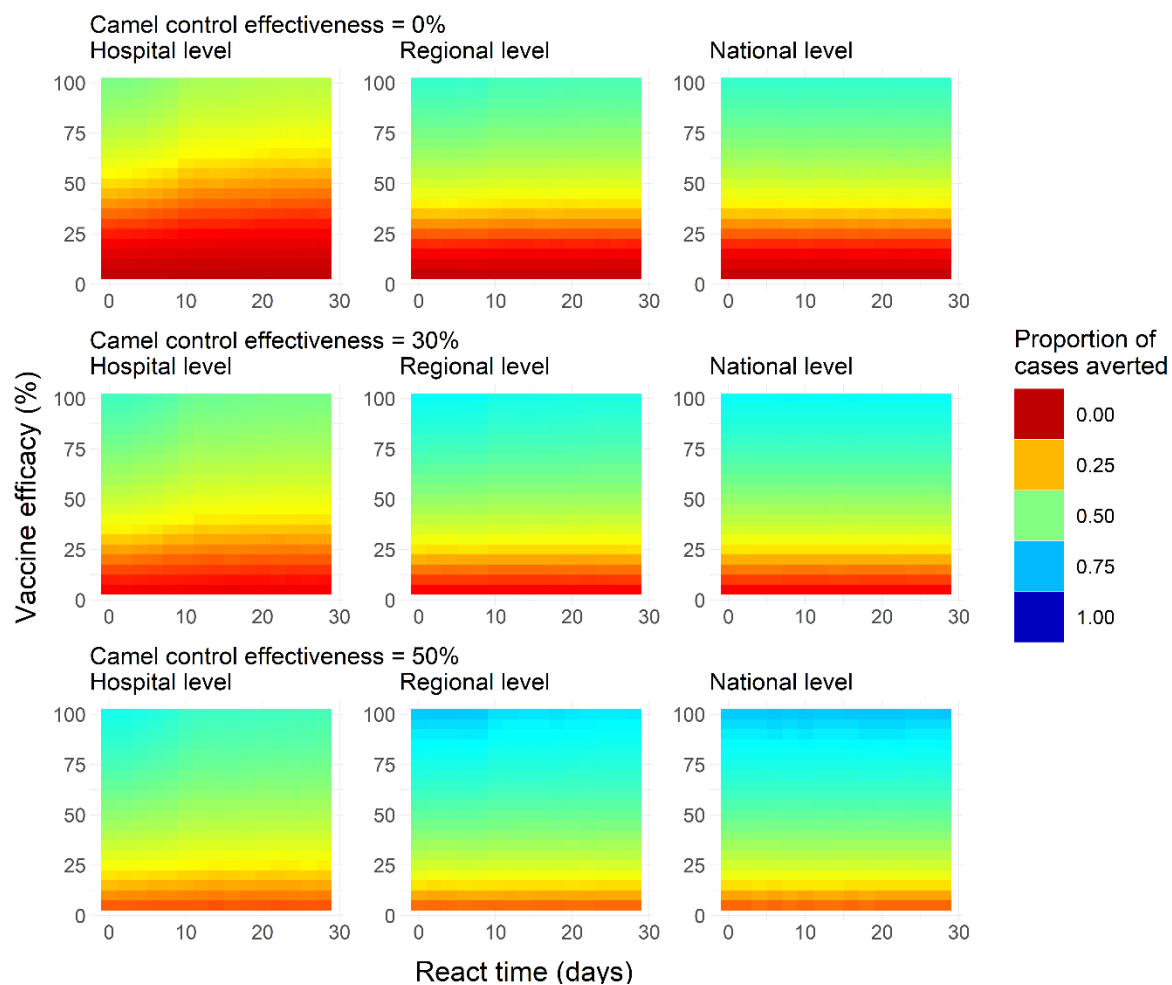
785

786 **Figure S4.** As per Figure 4, but showing upper credible intervals of the proportion of
787 cases averted.



788

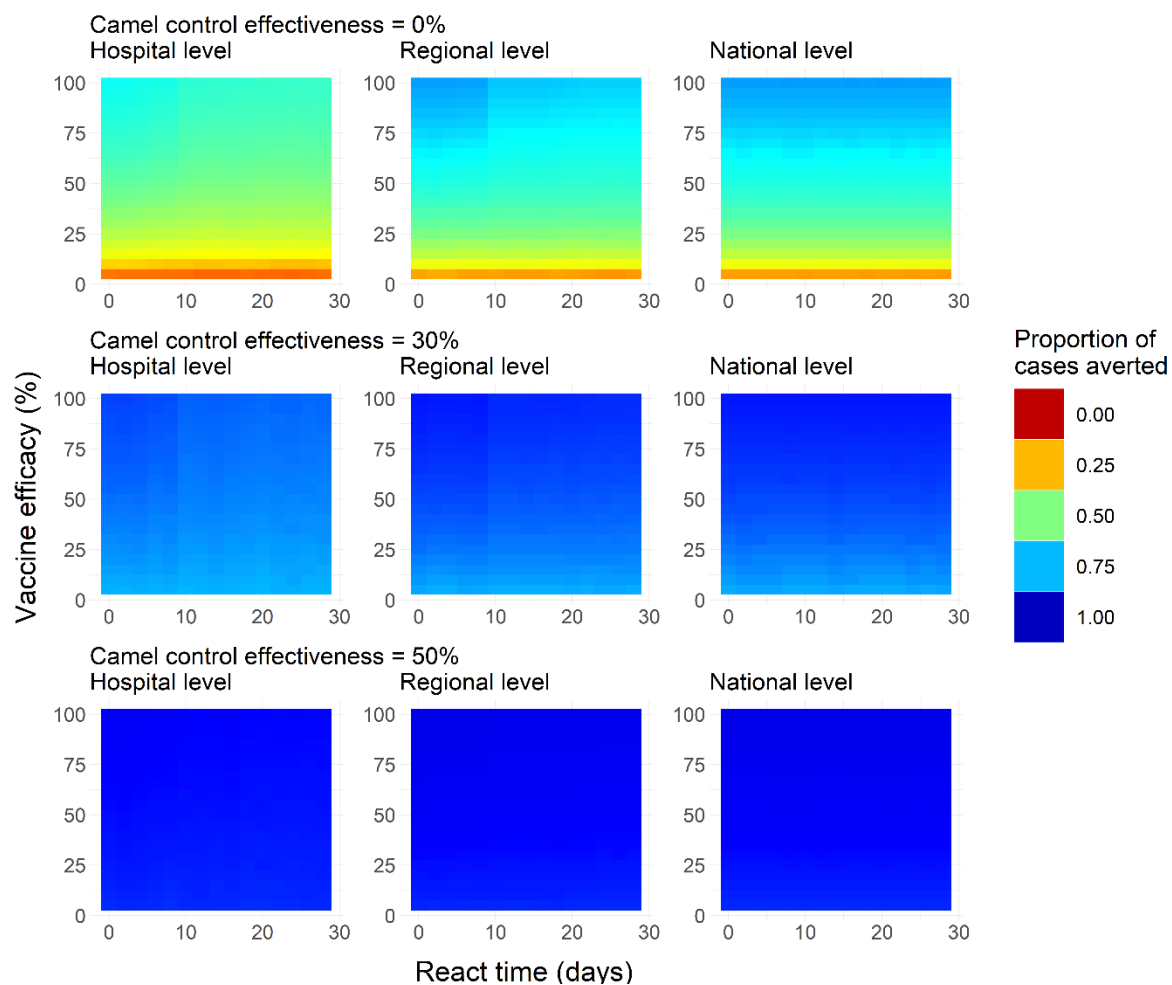
789 **Figure S5.** As per Figure 5, but showing mean posterior estimates of the proportion
790 of deaths averted.



791

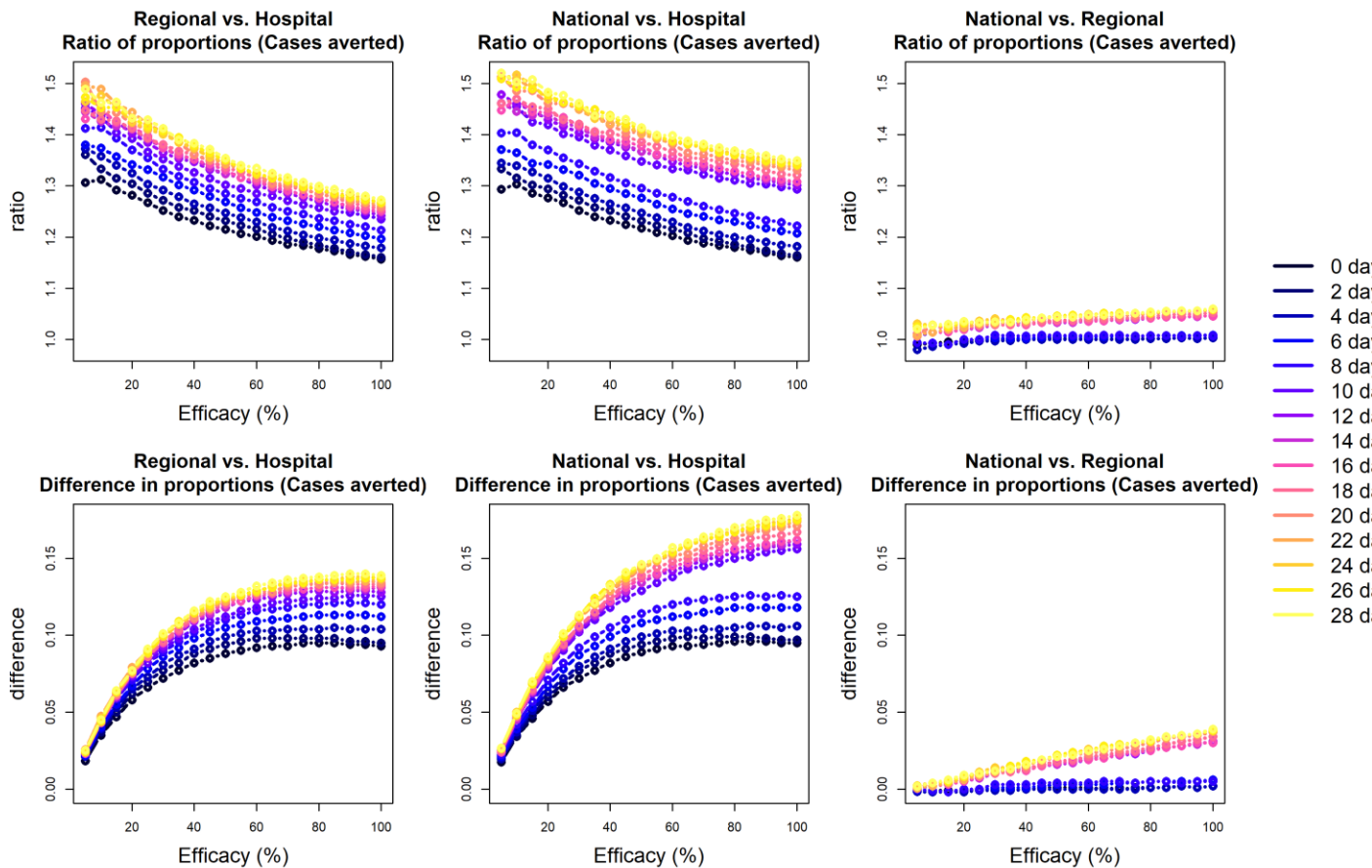
792 **Figure S6.** As per Figure 5, for lower credible intervals of proportion of cases

793 averted as a function of efficacy, react time and reaction level.



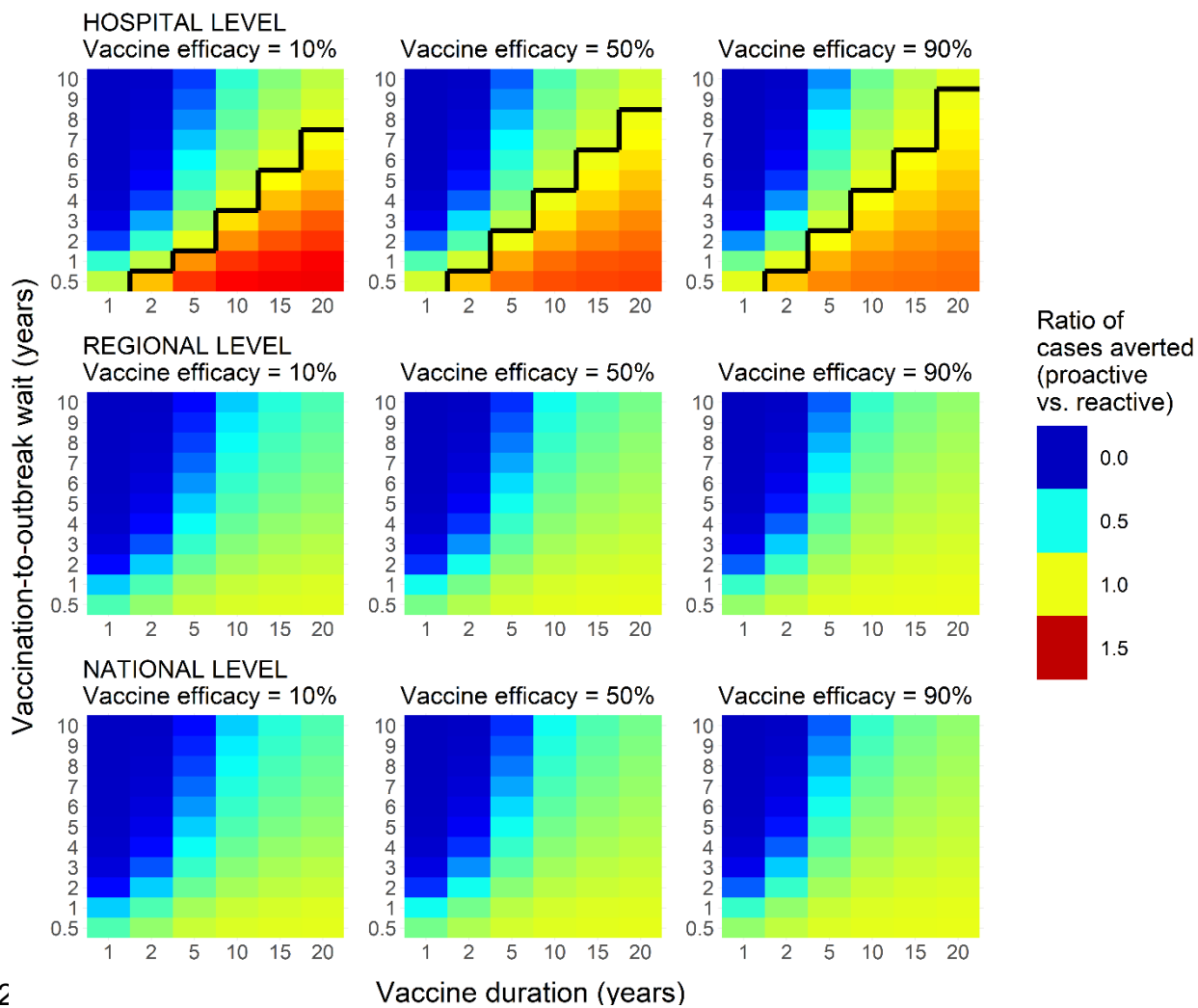
794

795 **Figure S7.** As per Figure 5, for upper credible intervals of proportion of cases
796 averted as a function of efficacy, react time and reaction level.



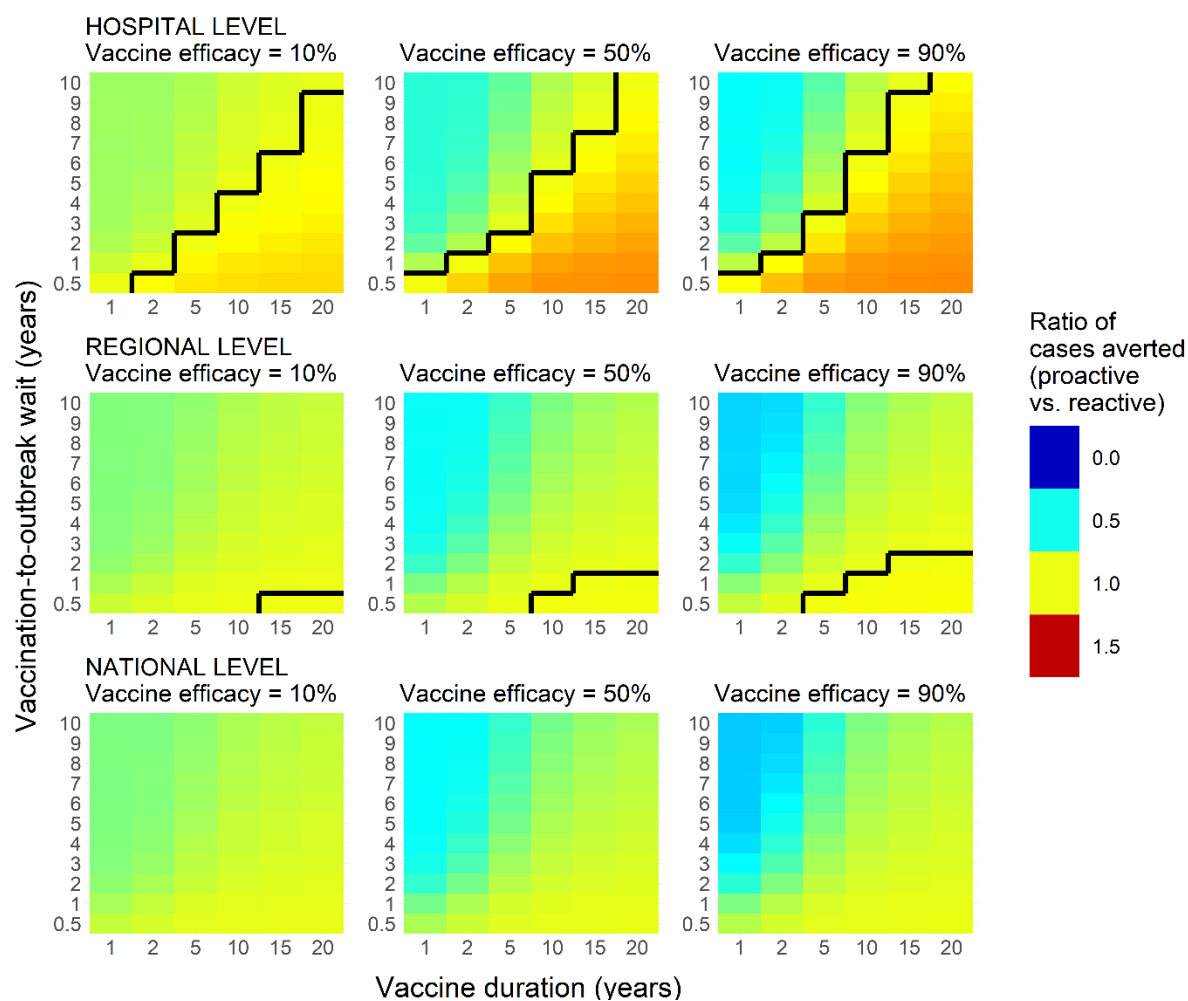
797

798 **Figure S8.** Comparison of reactive campaign levels. Top and bottom rows respectively
 799 show the ratios of and differences between the proportions of cases averted, by react
 800 time and efficacy. Left, middle and right columns show: i) regional vs. hospital; ii)
 801 national vs. hospital; iii) national vs. regional.



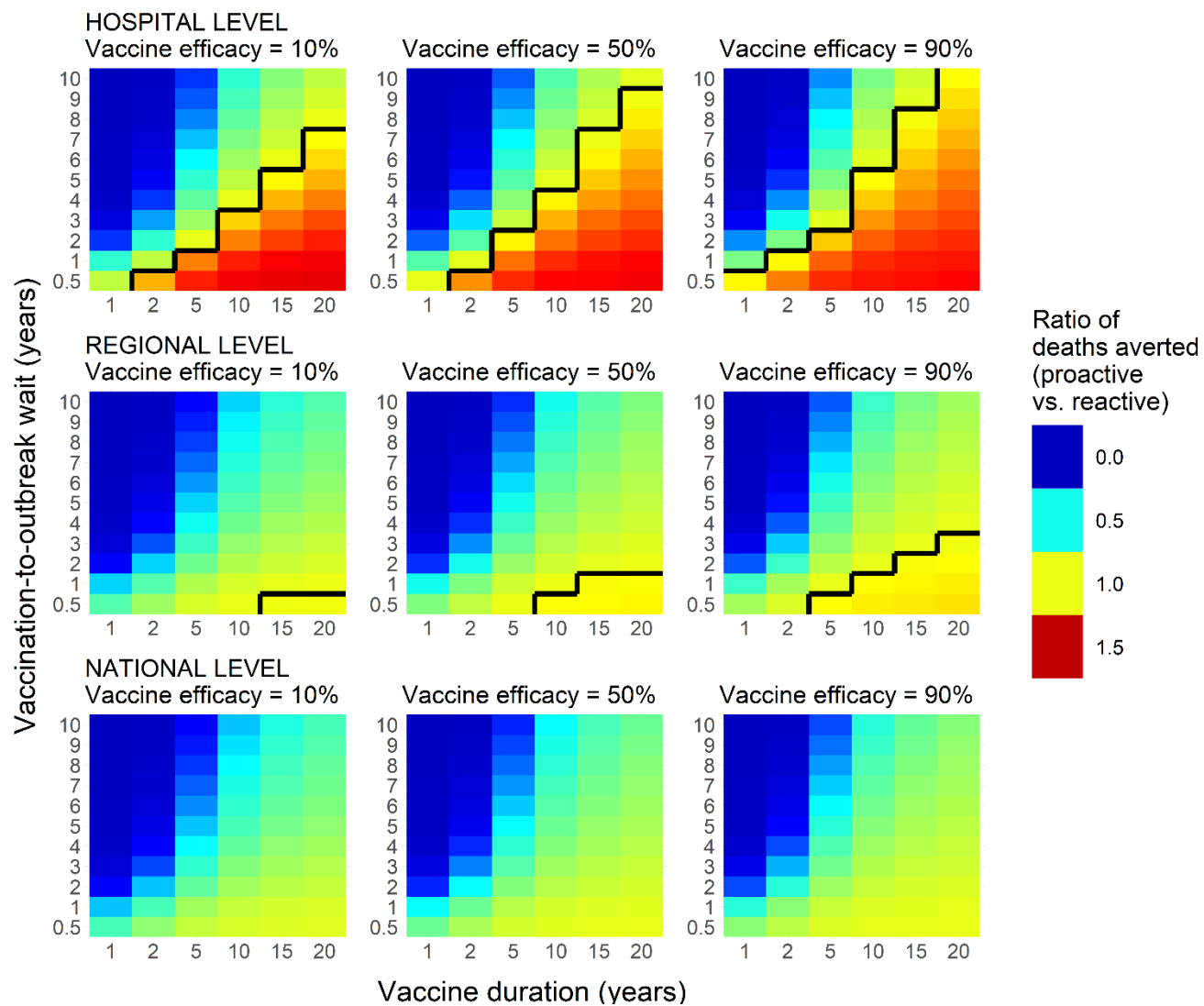
802

803 **Figure S9.** As per Figure 6, but assuming an 8-day react time.



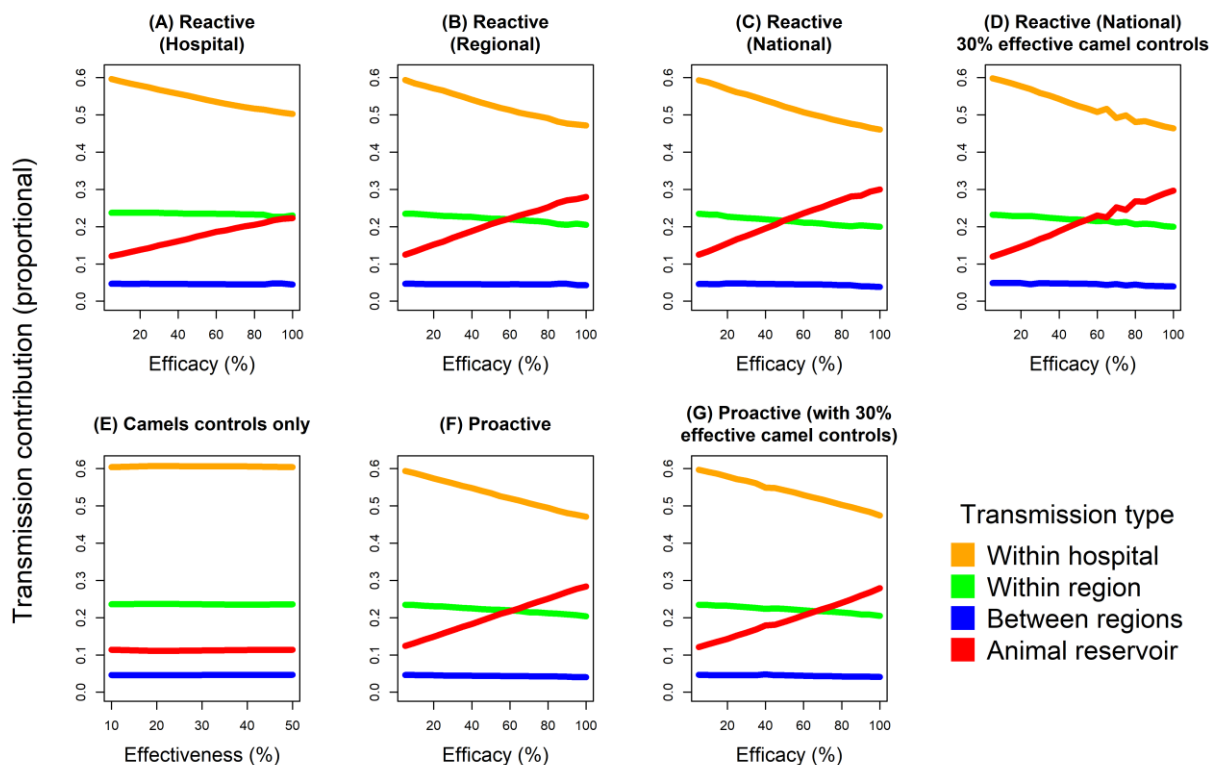
804

805 **Figure S10.** As per Figure 6, but assuming 30% effective camel control measures in
806 tandem with both proactive and reactive campaigns.



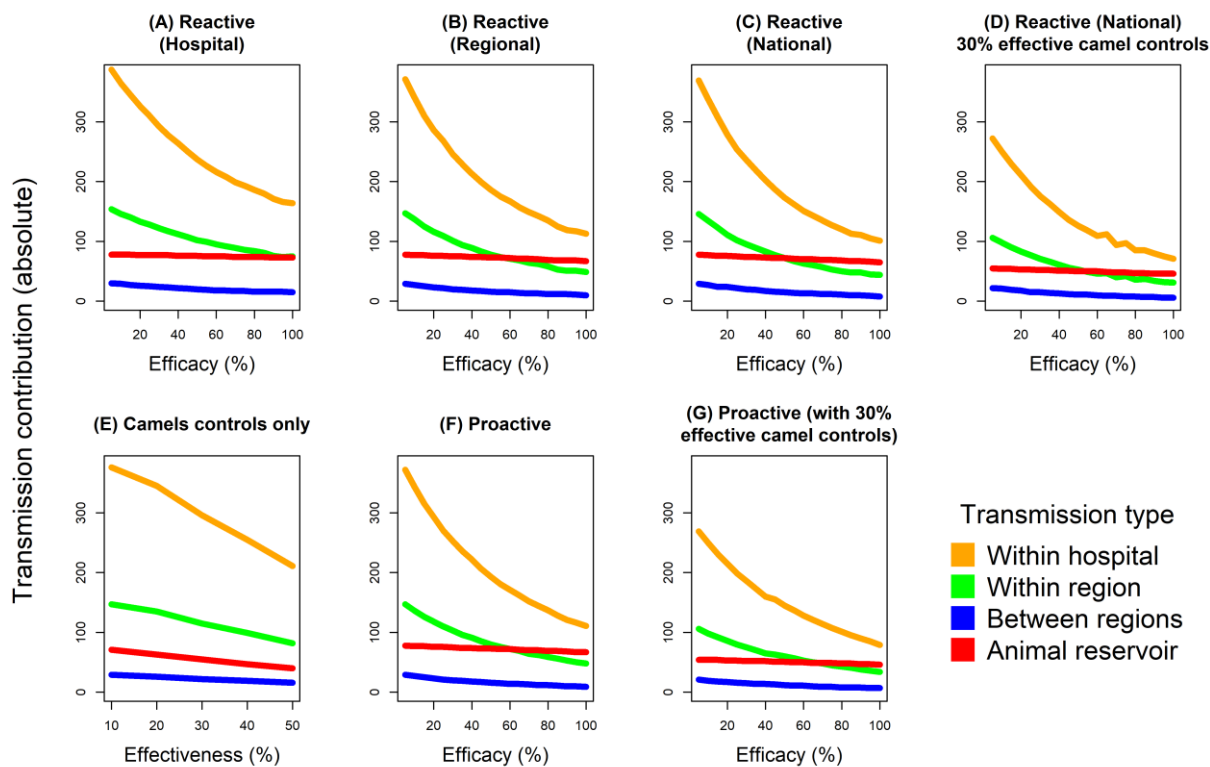
807

808 **Figure S11.** As per Figure 6, but showing ratio of deaths averted, as opposed to
809 cases.



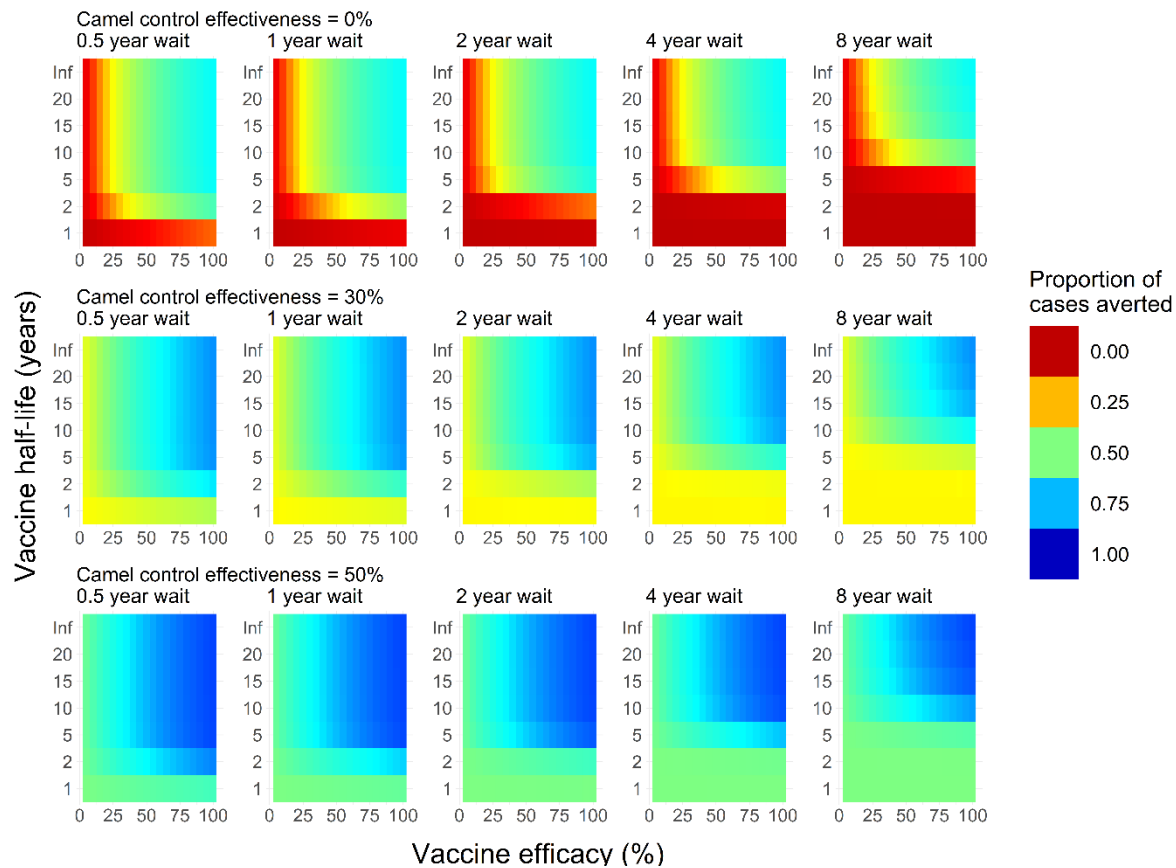
810

811 **Figure S12.** Change in relative contributions of transmission types with efficacy.
 812 Each plot shows the change in the proportion of overall cases numbers due to i)
 813 nosocomial; ii) regional; iii) national transmission and iv) the animal reservoir. Seven
 814 example vaccination campaign scenarios are shown: **(A)** reactive at hospital level;
 815 **(B)** reactive at regional level; **(C)** reactive at national level; **(D)** reactive at national
 816 level with 30% effective controls targeting camels; **(E)** Camel controls only (note that
 817 x-axis here shows effectiveness of camel control measures, not vaccine efficacy as
 818 per other plots); **(F)** proactive campaign without camel control measures and **(G)**
 819 proactive campaign with 30% effective camel control measures. Reactive campaigns
 820 assume 28-day react time. Proactive campaigns assume 5-year mean duration and
 821 6 months wait until next outbreak.



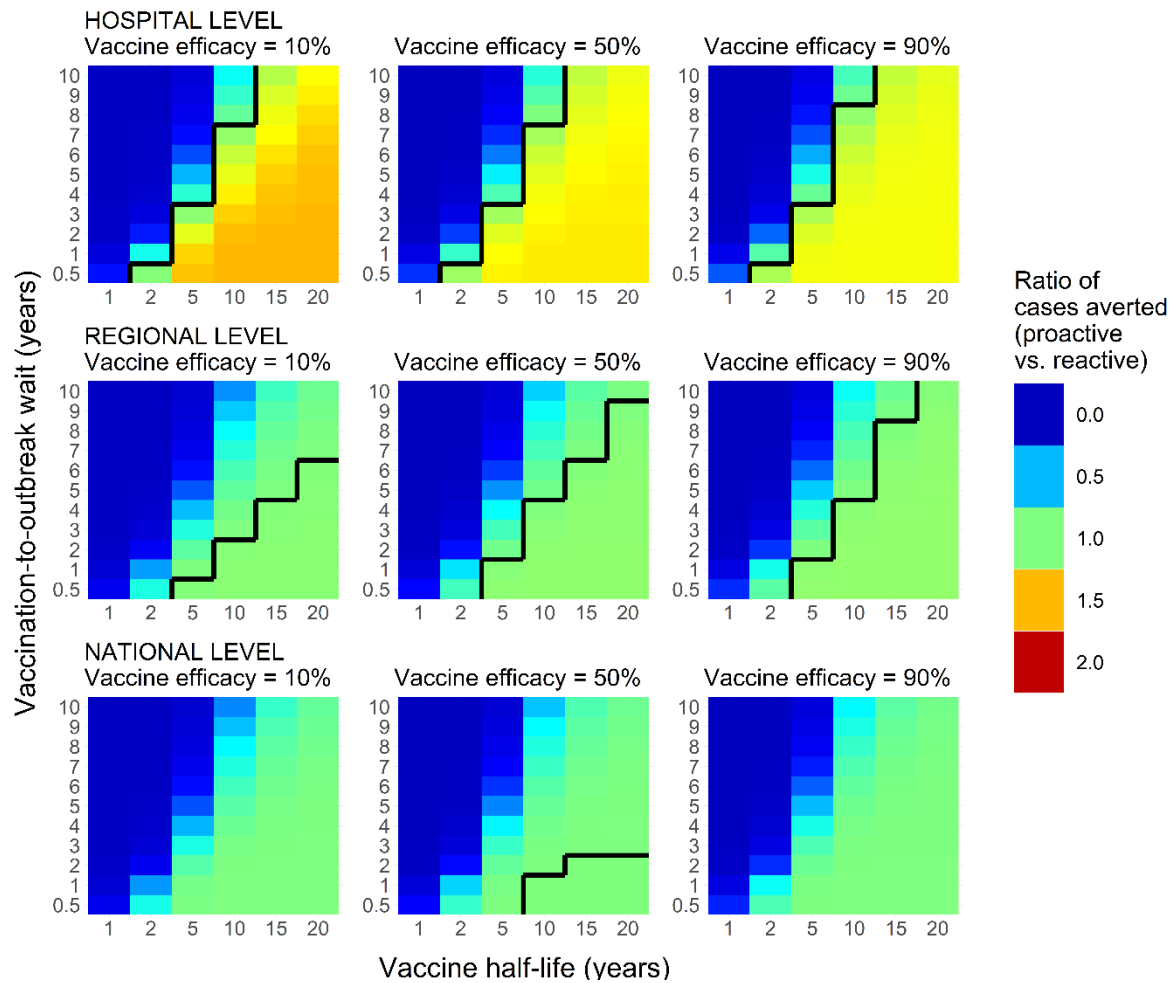
822

823 **Figure S13.** Change in absolute contributions of transmission types with efficacy. As
824 per Figure S12 but showing absolute case numbers by transmission type and
825 efficacy / effectiveness, not relative contributions.



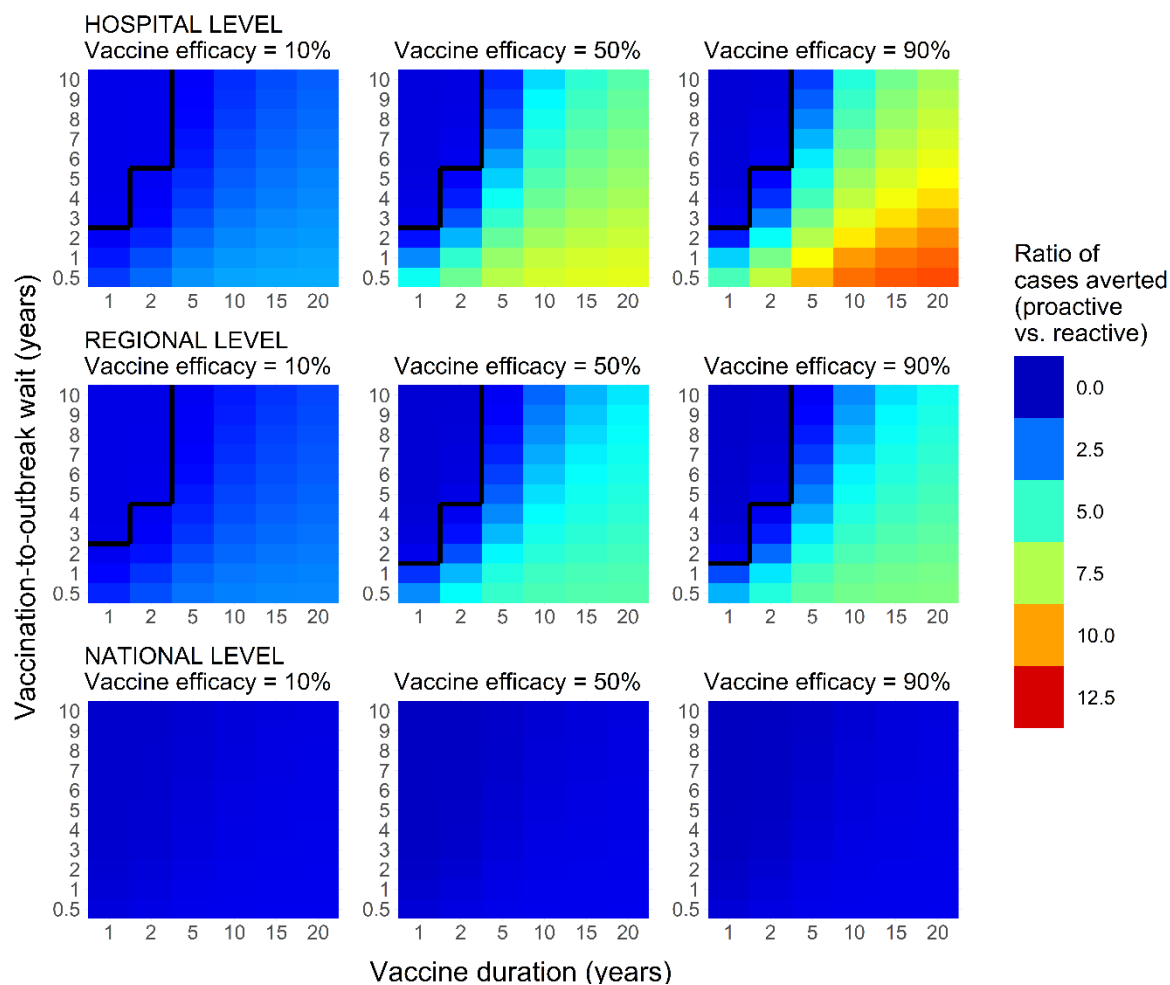
826

827 **Figure S14.** As per Figure 4, but showing mean posterior estimates of the proportion
828 of cases averted in proactive campaigns assuming that vaccine efficacy wanes
829 sigmoidally, and not exponentially as in our main analysis. Note that the y-axes
830 denote vaccine efficacy half-life, as opposed to mean duration.



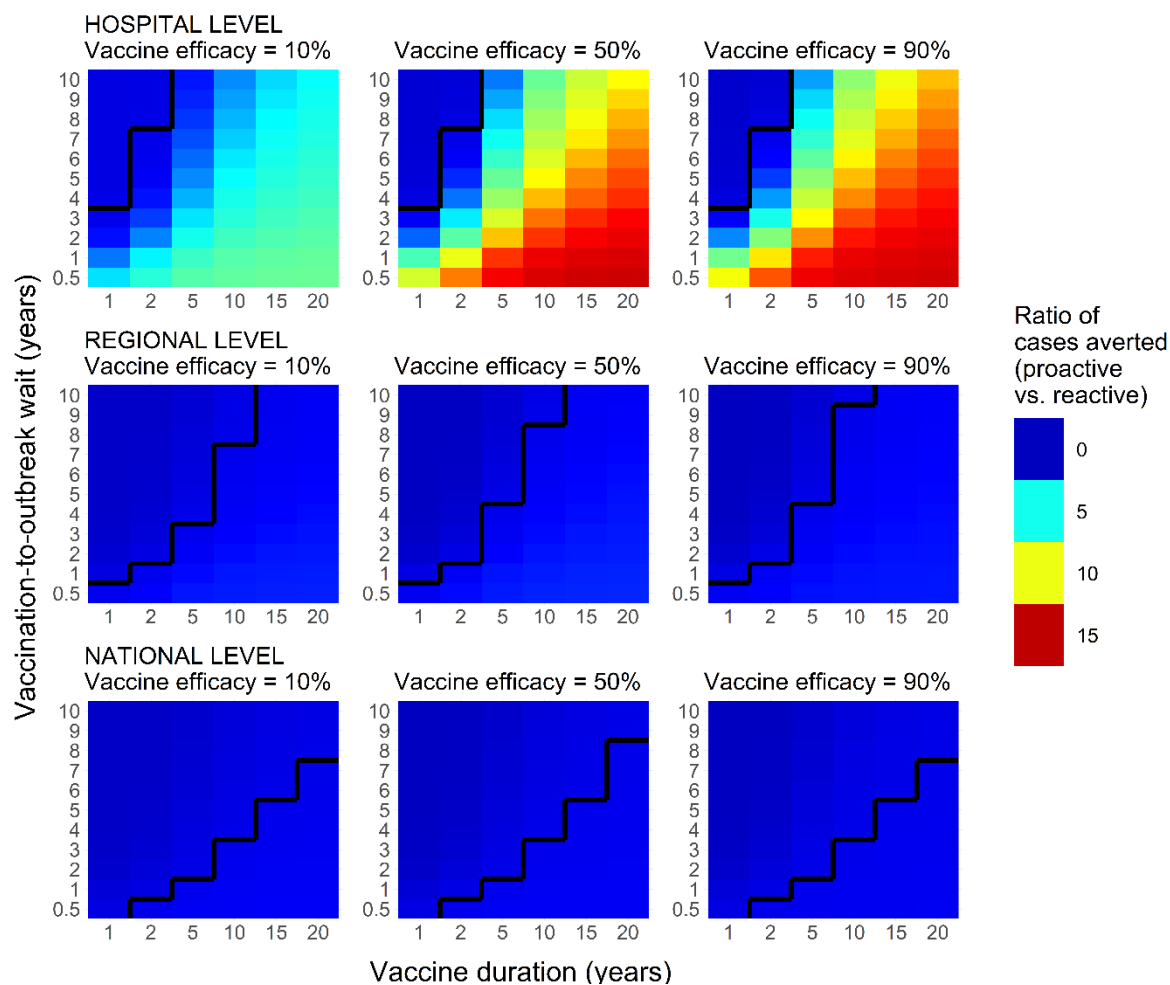
831

832 **Figure S15.** As per Figure 6, but where vaccine efficacy wanes sigmoidally, and not
833 exponentially as in our main analysis. Note that the y-axes denote vaccine efficacy
834 half-life, as opposed to mean duration.



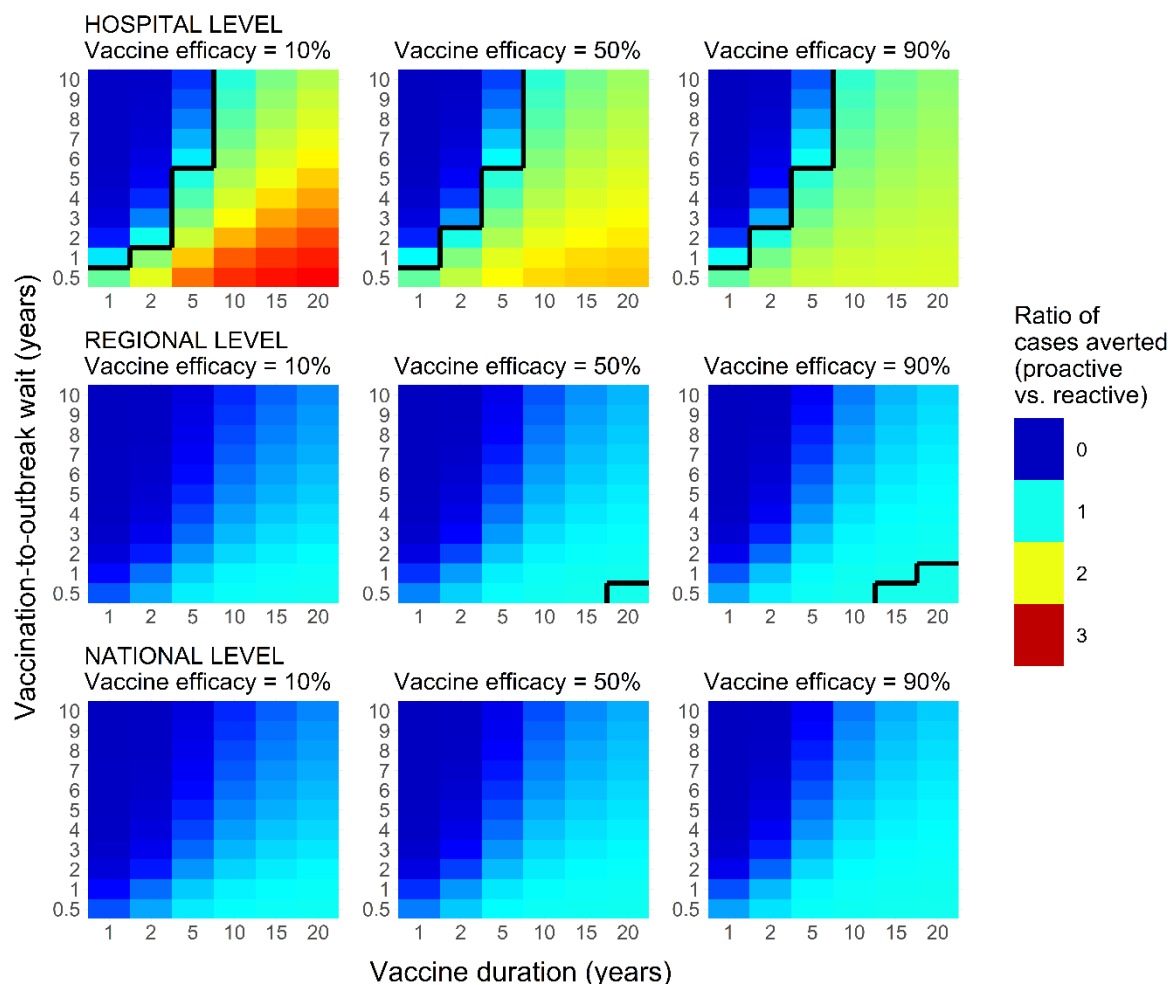
835

836 **Figure S16.** As per Figure 6, but showing mean posterior estimates of the proportion
837 of cases averted if considering vaccination only during Jan-Jun 2013.



838

839 **Figure S17.** As per Figure 6, but showing mean posterior estimates of the proportion
840 of cases averted if considering vaccination only during Jul-Dec 2013.



841

842 **Figure S18.** As per Figure 6, but showing mean posterior estimates of the proportion
843 of cases averted if considering vaccination only during Jan-Jul 2014.