

## PREDICTORS FOR SARS-COV-2 IMMUNITY

### 1 **Predictors for Reactogenicity and Humoral Immunity to SARS-CoV-2 Following Infection and mRNA**

### 2 **Vaccination: A Regularized Mixed-Effects Modelling Approach**

3 Erin C. Williams<sup>1,3</sup>, Alexander Kizhner<sup>2</sup>, Valerie S. Stark<sup>1,4</sup>, Aria Nawab<sup>1</sup>, Daniel D. Muniz<sup>1</sup>, Felipe Echeverri

4 Tribin<sup>3</sup>, Juan Manuel Carreño<sup>6</sup>, Dominika Bielak<sup>6</sup>, Gagandeep Singh<sup>6</sup>, Michael E. Hoffer<sup>1,5</sup>, Florian

5 Krammer<sup>6,7</sup>, Suresh Pallikkuth<sup>2</sup>, and Savita Pahwa<sup>2</sup>

6 <sup>1</sup>Department of Otolaryngology, University of Miami Miller School of Medicine, Miami, Florida, 33136 USA

7 <sup>2</sup>Department of Microbiology and Immunology, University of Miami Miller School of Medicine, Miami, Florida,

8 33146, USA

9 <sup>3</sup>Department of Biomedical Engineering, University of Miami, Miami, Florida, 33136, USA

10 <sup>4</sup> University of Miami Miller School of Medicine, Miami, Florida, 33136, USA

11 <sup>5</sup> Department of Neurological Surgery, University of Miami, Miller School of Medicine, Miami, Florida, 33136, USA

12 <sup>6</sup> Department of Microbiology, Icahn School of Medicine at Mount Sinai, New York, New York, 10029, USA

13 <sup>7</sup> Department of Pathology, Molecular and Cell-based Medicine, Icahn School of Medicine at Mount Sinai, New

14 York, New York, 10029, USA

15

16 **Corresponding author:** Savita Pahwa, M.D. at the Department of Microbiology and Immunology

17 (Pediatrics and Medicine), University of Miami Miller School of Medicine, 1580 NW 10th Avenue; BCRI

18 712, Miami, FL 33136, USA.

19 E-mail: [spahwa@med.miami.edu](mailto:spahwa@med.miami.edu)

20 Phone: 305-243-7732

21 Fax: 305-243-7211

22

23 Word Count: 3499

24 Abstract Word Count: 191

25

26

27 **Background**

28 The influence of pre-existing humoral immunity, inter-individual demographic factors, and vaccine-  
29 associated reactogenicity on immunogenicity following COVID vaccination remains poorly understood.

30 **Methods**

31 Ten-fold cross-validated least absolute shrinkage and selection operator (LASSO) and linear mixed  
32 effects models were used to evaluate symptoms experienced during natural infection and following  
33 SARS-CoV-2 mRNA vaccination along with demographics as predictors for antibody (AB) responses in  
34 COVID+ participants in a longitudinal cohort study.

35 **Results**

36 In previously infected individuals, AB were more durable and robust following vaccination when  
37 compared to natural infection alone. Higher AB were associated with experiencing dyspnea during  
38 natural infection, as was the total number of symptoms reported during the COVID-19 disease course.  
39 Both local and systemic symptoms following 1<sup>st</sup> and 2<sup>nd</sup> dose of SARS-CoV-2 mRNA vaccines were  
40 predictive of higher AB after vaccination, as were the demographic factors of age and Hispanic ethnicity.  
41 Lastly, there was a significant temporal relationship between AB and days since infection or vaccination.

42 **Conclusion**

43 Vaccination in COVID+ individuals ensures a more robust immune response. Experiencing systemic and  
44 local symptoms post-vaccine is suggestive of higher AB, which may confer greater protection. Age and  
45 Hispanic ethnicity are predictive of higher AB.

46

47 Keywords: COVID-19, protective antibodies, vaccine reactogenicity

48 **Introduction**

49 The heterogeneous presentation of severe acute respiratory syndrome coronavirus 2 (SARS-CoV-2) is  
50 associated with inter-individual factors [1, 2], including age, biological sex, comorbidities, individual  
51 susceptibility to the virus, exposure load, viral shedding, pre-existing binding or neutralizing antibodies  
52 [3, 4], and pre-existing cross-reactive T cells [5-7]. Variability in these factors and their distinct  
53 contributions to the individual immune response has made it difficult to generalize the clinical disease  
54 course of SARS-CoV-2-infected individuals [1, 8]. Immunoassays have been used extensively throughout  
55 the COVID-19 pandemic [9]. Their primary utility lies in characterizing the immune response following  
56 vaccination, assessing viability for convalescent plasma donation, and acting as a population surveillance  
57 tool [10, 11] though the most pressing work remains developing correlates for protection. Neutralizing  
58 and binding titers remain well supported as protective markers [3, 12] regardless of natural infection or  
59 vaccination, including a recent study [13] which associated increased binding and neutralizing antibodies  
60 with an inverse risk for SARS-CoV-2 infection following mRNA-1273 (Moderna) vaccination.

61  
62 Previous studies have evaluated change in peak post-vaccination antibody titers as a function of time  
63 [14] and the relationship between quantitative antibodies and disease severity [15]. Additionally, there  
64 is evidence suggesting that antibody titers in vaccinated, previously coronavirus disease 2019 (COVID-  
65 19) positive individuals [16-19] can predict the degree of individual immune protection [20]. The aim of  
66 this paper is to investigate relationships between sociodemographic factors, reactogenicity, and  
67 immunogenicity following SARS-CoV-2 mRNA vaccination in previously SARS-CoV-2 infected participants.  
68 This analysis addresses a gap in the current COVID-19 literature that may help elucidate how pre-  
69 existing immunity and vaccine reactogenicity are associated with post-vaccination antibody titers (i.e.,  
70 humoral immunogenicity).

71

72 While a reactogenic response (i.e., short-term symptoms such as injection-site pain, fever, myalgia, etc.)  
73 is expected following vaccination [19], there is no current evidence to support a relationship between  
74 reactogenicity and immunogenicity for COVID-19 vaccines. We also address a major clinical question  
75 regarding how severity of the COVID-19 disease course influences immunogenicity following SARS-CoV-2  
76 vaccination. Conclusions drawn from this study may contribute to a more personalized public health  
77 approach to future COVID-19 vaccine strategies, which could account for an individual's demographics  
78 (e.g., age, gender, or race) or existing immunity prior to vaccination receipt [21].

79

## 80 **Methods**

### 81 *Study Design and Participants*

82 We included a subset of individuals who are enrolled in our IRB-approved (#20201026), longitudinal,  
83 prospective SARS-CoV-2 immunity study. Following the written informed consent process, participants  
84 answered questions detailing their demographics, lifestyle habits, past medical history (including COVID-  
85 19), and COVID-19 infection symptoms. Blood samples were collected for serum and peripheral blood  
86 mononuclear cell (PBMC) processing. Plasma was stored at -80°C and PBMCs were cryopreserved in  
87 liquid N<sub>2</sub> [22]. All participants agreed to sample banking for future research use.

88

89 Participants who were enrolled in the study between October 2020 – June 2021 and had a history of  
90 COVID-19 were included in this analysis. mRNA vaccines (Pfizer (BNT162b2) and Moderna (mRNA-  
91 1273)) were the only options available [9] during the enrollment period and therefore most participants  
92 received mRNA vaccines. Individuals who only received one dose of an mRNA vaccine or received the  
93 Johnson & Johnson vaccine were excluded. Additionally, participants who were administered their  
94 second dose of an mRNA vaccine >7 days after or <4 days before the recommended [23] number of days  
95 after the first dose (21 days for Pfizer; 28 days for Moderna) were excluded in order to account for the

96 temporal, transient nature of post-vaccine reactogenicity and the subsequent immune response in order  
97 to best reflect the general population. Individuals with SARS-CoV-2 re-infection or breakthrough  
98 infection were also excluded. All samples provided during the baseline visit and thereafter were  
99 included in this analysis.

100

101 Participants who received vaccines were instructed to return for two additional visits, where they  
102 answered binary “Yes/No” questions in a survey about their symptoms following vaccination. Symptoms  
103 were rated on a Likert scale, where a “0” indicated no symptoms and a “10” indicated the highest  
104 symptom severity. They also provided blood samples, which were processed for PBMCs and plasma as  
105 described above. Fourteen days after participants received Dose 2, we classified them as “fully  
106 vaccinated”.

107

#### 108 *Enzyme-Linked Immunosorbent Assay (ELISA)*

109 SARS-CoV-2 ELISAs were performed using a well-described assay developed by the Icahn School of  
110 Medicine at Mount Sinai [10, 11]. Briefly, 96-well plates were coated at 4 °C with SARS-CoV-2 spike  
111 protein (2 µg/ml) solution and incubated overnight. Plates were blocked with 3% non-fat milk prepared  
112 in PBS with 0.1% Tween 20 (PBST) and incubated at room temperature for 1h. After blocking, serial  
113 dilutions of heat inactivated serum samples were added to the plates and incubated for 2h at room  
114 temperature. Plates were washed three times with 0.1% PBST followed by addition of a 1:3,000 dilution  
115 of goat anti-human IgG–horseradish peroxidase (HRP) conjugated secondary antibody (50µl) well and  
116 incubated 1h. Plates were washed, 100 µl SIGMAFAST OPD (o-phenylenediamine dihydrochloride;) solution  
117 was added to each well for 10 min and then the reaction was stopped by the addition of 50µl  
118 per well of 3M hydrochloric acid. The optical density at 490nm (OD490) was measured using a Synergy 4  
119 (BioTek) plate reader. The background value was set at an OD490 of 0.15 then discrete titers were

120 reported in values of 1:100, 1:200, 1:400, 1:800, 1:1600, 1:3200, 1:6400, 1:12800, 1:25600, 1:51200,  
121 1:102400, and 1:204800. The limit of detection was set at 1:100.

122

### 123 *Statistical Analysis*

124 SARS-CoV-2 antibody titers were log<sub>2</sub>-transformed before all statistical analyses. We utilized a  
125 generalized additive model to model the bi-phasic change in antibodies over time, including the rate of  
126 antibody decay following natural infection (after last positive SARS-CoV-2 test [LPT] result) and full  
127 vaccination ( $\geq 14$  days after the second mRNA vaccine dose) [24] by modelling antibody titers with the  
128 smooth function number of days elapsed using a cubic regression with 3 knots and the fixed effect of  
129 vaccination status (after natural infection/pre-vaccination and after full vaccination). We replicated the  
130 above as a linear mixed-effects model (LMM), where we incorporated the same fixed effects but  
131 included participants as a random-intercepts effect to control for individual differences. The rates of log-  
132 transformed antibody titer decay along with the limit of detection of our assay were used to estimate  
133 the number of days that the antibodies remain detectable after both natural infection and full  
134 vaccination.

135

136 Ten-fold cross-validated least absolute shrinkage and selection operator (LASSO) models were employed  
137 as a feature-selection and regularization technique. The LASSO models were tuned to select the simplest  
138 model within one standard error of the lowest value root-mean-square error accuracy metric that  
139 included at least two predictors (Supplementary Table 1). Four LASSO models with identical  
140 demographic variables were constructed while controlling for time or days since LPT, 1st dose, or 2nd  
141 dose, respectively, including: 1) the effect of infection symptoms on the antibody response post-  
142 infection, 2) the effect of infection symptoms on the antibody response post full vaccination, 3) the  
143 effect of dose 1 vaccine symptoms on the antibody response post full vaccination, and 4) the effect of

144 dose 2 vaccine symptoms on the antibody response post full vaccination. The selected predictors from  
145 each of the best-fitting cross-validated LASSO models were then included as fixed effects in follow-up  
146 LMMs with by-participant random intercepts, allowing us to control for individual differences. For  
147 significant categorical fixed effects from the LMMs, we conducted post-hoc Tukey tests to confirm  
148 directionality and to correct for multiple comparisons.

149

150 Additional linear regressions were used to investigate effects of each symptom following infection, 1<sup>st</sup>  
151 dose of vaccination, and 2<sup>nd</sup> dose of vaccination and explore possible relationships between  
152 demographics factors on peak antibody titer levels following full vaccination. Analyses were performed  
153 using R statistical software Version 4.1.1 [24]. Generalized additive modeling, cross-validation, LASSO  
154 modelling, LMM, and post-hoc Tukey tests were conducted with the R packages *mgcv* [25], *caret* [26],  
155 *glmnet* [27], *nlme* [28], and *glht* [29], respectively, while the linear modelling, Mann-Whitney U tests,  
156 and Kruskal-Wallis tests were performed using the R package *stats* [24]. Plots were produced using the  
157 *ggplot2* [30].

158

## 159 **Results**

### 160 *Characteristics of the Study Population*

161 Demographic characteristics are detailed in Table 1. Thirty-three participants were included in our post  
162 infection cohort. The median number of days since LPT to entry into the study was 101 days. For the  
163 post dose 1 and post dose 2 analysis, we included 49 and 48 participants, respectively.

164

### 165 *Symptoms Reported Following Infection and Vaccination*

166 The highest reported symptom during the vaccine-naïve COVID-19 course was fatigue (63%) (Table 2).

167 Other highly reported symptoms included anosmia (55%), congestion (53%), and myalgias/muscle aches

168 (57%). Following dose 1, the most common symptoms were injection site pain (51%), headache (29%),  
169 and fatigue (29%). Similarly, the most common symptoms reported following the second mRNA  
170 vaccination (dose 2) were injection site pain (53%), fatigue (39%), and myalgias (29%) (Table 2).

171

172 *In Previously Infected Individuals, Antibody Titers Are More Robust Following Full-Vaccination as*  
173 *Compared to Post Natural Infection*

174 We found that there was a more robust antibody response immediately following full vaccination  
175 (Figure 1C) when compared to the antibody response following natural infection (estimate = 4.117,  $t =$   
176 12.950,  $p = < 0.001$ ) (Figure 1B), where peak  $\log_2$  antibody titers were greater in the vaccination with  
177 prior infection (14.517) than in natural infection (9.217). This is illustrated in Figure 1A, where natural  
178 infection and post-full vaccination titers were included in a bi-phasic model to show longitudinal  
179 antibody responses. Infected individuals had a slower rate of antibody titer decay ( $-0.010$  vs  $-0.015$  log  
180 per day), though this effect was small (estimate =  $-0.005$ ,  $t = 2.351$ ,  $p = 0.020$ ). Our linear model also  
181 predicted that antibody titers remain detectable for a longer period of time after full vaccination (535  
182 days) compared to natural infection alone (404 days), using the respective rates of antibody decay and  
183 the limit of detection for our assay. Additional LMMs confirmed our findings that antibody titer declined  
184 faster following full vaccination than in natural infection (estimate =  $-0.006$ ,  $F = 11.238$ ,  $p < 0.001$ ). Of  
185 note, the combination of natural infection followed by vaccination, or so-called “hybrid immunity”,  
186 elicits a more durable antibody response than natural infection alone (estimate = 4.138,  $F = 794.623$ ,  $p <$   
187 0.0001), as  $\log_2$  antibody titers were predicted to remain detectable for a longer period of time following  
188 vaccination (550 days) than natural infection (464 days).

189

190 *Days Elapsed and Symptoms Reported During Infection Influence Antibody Titers*



191 As shown in Table 3, difficulty breathing during infection (estimate = 1.590,  $F = 5.684$ ,  $p = 0.024$ ) and  
192 days elapsed since LPT (estimate = -0.006,  $F = 9.912$ ,  $p = .004$ ) were significant main effects in predicting  
193 antibody titers following natural infection. Post-hoc testing confirmed that antibody titers were elevated  
194 in individuals who experienced difficulty breathing ( $z = 2.612$ ;  $p = 0.009$ ).

195  
196 When modeling demographics and symptoms at infection to predict the antibody response after full  
197 vaccination, we found that days elapsed since full vaccination (estimate = -0.014;  $F = 258.176$ ;  $p <$   
198  $0.0001$ ), age (estimate = 0.018;  $F = 6.000$ ;  $p = 0.019$ ), and ethnicity (Hispanic) (estimate = 0.456;  $F =$   
199  $5.265$ ;  $p = 0.018$ ) were significant main effects, though no categorical variables were significant after  
200 post-hoc testing.

201  
202 *Symptoms Following Vaccination Are Predictive of Higher Antibody Titers After Full Vaccination*  
203 Local and systemic symptoms following 1<sup>st</sup> dose of SARS-CoV-2 mRNA vaccines were predictive of higher  
204 antibody titers after full vaccination. As seen in Table 3, the results of the LMM show that days elapsed  
205 since full vaccination (estimate = -0.014,  $F = 262.855$ ,  $p < 0.0001$ ), chills (estimate = 0.541;  $F = 4.915$ ;  $p =$   
206  $0.032$ ), injection site redness (estimate = 1.243;  $F = 4.330$ ;  $p = 0.044$ ), age (estimate = 0.021;  $F = 6.960$ ;  $p =$   
207  $0.012$ ), and ethnicity (estimate = 0.562,  $F = 4.583$ ,  $p = 0.038$ ) were significant. Following post-hoc  
208 Tukey testing on the significant categorical main effects, we found that injection site redness ( $z = 2.081$ ,  
209  $p = 0.038$ ) and ethnicity (Hispanic) ( $z = 2.382$ ,  $p = 0.017$ ) were significant, while the main effect of chills  
210 was not.

211  
212 We also examined demographics and symptoms reported during the 2<sup>nd</sup> dose of SARS-CoV-2 mRNA  
213 vaccination and their effect on the antibody response after full vaccination. Days since full vaccination  
214 (estimate = -0.014;  $F = 259.745$ ;  $p < 0.0001$ ), age (estimate = 0.023;  $F = 7.652$ ;  $p = 0.009$ ), identifying as

215 Hispanic (estimate = 0.609;  $F = 6.683$ ;  $p = 0.013$ ), fever (estimate = 0.839;  $F = 11.154$ ,  $p = 0.002$ ), and  
216 influenza vaccination (estimate = -0.475;  $F = 4.405$ ;  $p = 0.042$ ) were observed to be significant. Fever  
217 and ethnicity (Hispanic) were found to be statistically significant ( $z = 3.016$ ,  $p = 0.003$ ;  $z = 2.735$ ,  $p =$   
218 0.006, respectively) following post-hoc testing, though influenza vaccination was not.

219

220 *The Number of Symptoms During Infection Result in Higher Peak Antibody Titers Post Full-Vaccination*

221 As shown in Figure 2, the number of symptoms reported during infection significantly predicted peak  
222 antibody titers after full vaccination (estimate = 0.10,  $t = 2.10$ , Pearson's  $r = 0.296$ ;  $p = .041$ ). Additional  
223 linear models were conducted for the number of symptoms reported as a function of demographics,  
224 where we found that the number of symptoms self-reported during infection was significantly  
225 influenced by self-identifying as White (estimate = 4.679,  $t = 2.153$ ,  $p = 0.037$ ). No other demographic  
226 was significant.

227

## 228 **Discussion**

229 The goal of this study was to investigate the role of demographics, pre-existing immunity, and  
230 symptomatology following infection and vaccination to ascertain whether they independently or  
231 collectively are associated with immunogenicity following mRNA vaccination for COVID-19 in individuals  
232 previously infected with SARS-CoV-2. Our results demonstrate higher durability and robustness of  
233 antibody titers despite a faster rate of antibody decay following vaccination, which supports previously  
234 reported findings [31] for SARS-CoV-2 mRNA vaccines. Unsurprisingly, our results also demonstrate that  
235 a larger temporal gap between an individual's LPT and/or date of vaccination predict decline of antibody  
236 titers over time.

237

238 Following infection alone, we found that the number of symptoms reported and difficulty breathing  
239 during the COVID-19 course were predictive of higher antibody titers. This result supports existing  
240 evidence [32, 33] that individuals who report a more severe or symptomatic SARS-CoV-2 infection have  
241 higher peak titers than asymptomatic individuals. Our data also support higher peak antibody titers  
242 following vaccination with increasing age [32, 34]. The possible relationship between the antibody titer  
243 post-vaccination and vaccine reactogenicity is largely unknown. Given that strength of the antibody  
244 response was shown to correlate with disease severity in patients with COVID-19, we hypothesized that  
245 more prominent post-vaccination adverse reactions might be associated with a stronger immune  
246 response. After receiving dose 1 of either Pfizer or Moderna’s COVID-19 vaccine, the local symptom of  
247 injection site redness was found to be significantly predictive for higher antibody titers following full  
248 vaccination and could be an indicator of the early and more prominent immune response. Interestingly,  
249 after dose 2 we found that fever was significantly predictive for higher antibody titers following full  
250 vaccination, though it should be noted that asymptomatic individuals mounted robust immune  
251 responses as well.

252  
253 Most critically, our analysis demonstrates that in previously infected individuals, SARS-CoV-2 mRNA  
254 vaccines result in a more robust antibody response than that following infection alone. Indeed, in  
255 individuals with “hybrid immunity”, antibody titers peak following full vaccination at 4-fold higher than  
256 those following naturally acquired immunity and appear to persist at detectable levels for >500 days  
257 following vaccination. One explanation for this increased response could be the presence of pre-existing  
258 memory T and B cell responses developed during natural infection. These cells might enhance a  
259 secondary immune response following vaccination similar to that of a booster immunization. In addition  
260 to bolstering the current CDC recommendations [35] that individuals previously infected with SARS-CoV-  
261 2 receive vaccination, our results provide additional, longitudinal support for this measure. In addition

262 to lowering the risk of re-infection [36, 37], vaccination clearly increases an individual's immune  
263 response [38, 39], which is vitally important as SARS-CoV-2 continues to produce variants capable of  
264 immune evasion, such as Delta (B.1.617.2) and Omicron (B.1.1.529) [40].

265  
266 Current evidence supports a stronger reactogenic profile (both systemic and local) following the first  
267 vaccine dose in previously infected individuals [41, 42], though it is worth noting that the median time  
268 between COVID-19 to the first dose of vaccine in the studies cited above was either not reported or was  
269 only 2.9 months. In our cohort, there is considerable variability between participants in days elapsed  
270 from LPT to time of vaccination (1<sup>st</sup> dose median = 99 days; 95% CI = 72–159 days; 2<sup>nd</sup> dose median =  
271 127 Days; 95% CI = 93-180 days). Given current knowledge regarding antibody decline, it is reasonable  
272 to posit that a longer temporal gap between SARS-CoV-2 infection and vaccination may have resulted in  
273 a more reactogenic response to the 2<sup>nd</sup> dose of vaccine when compared to participants who had shorter  
274 intervals between infection and vaccination as noted in the studies described above.

275  
276 Previous work [43] examining the relationship between SARS-CoV-2 vaccine reactogenicity and  
277 immunogenicity has been limited by assay type (i.e., semi-quantitative assays) and only deigned to  
278 measure immunity immediately following vaccination. Another group [44] conducted a survey to assess  
279 reactogenicity of COVID-19 vaccines and found that previous infection was associated with an increased  
280 risk of reporting any side effect. They also found that mRNA vaccines seemed to produce milder, less  
281 frequent systemic side effects but more local reactions in comparison to vector vaccines (i.e., Oxford  
282 AstraZeneca AZD1222), which are consistent with our findings following the 1<sup>st</sup> dose. To our  
283 knowledge, we are the first to examine predictors of reactogenicity and immunogenicity following SARS-  
284 CoV-2 vaccines in participants with prior COVID-19.

285

286 Intrinsic factors, such as age, gender, and ethnicity are thought to influence immunogenicity, but little is  
287 known about the impact of ethnicity in particular [19]. Our study was conducted in Miami-Dade County,  
288 an international, multi-cultural hub where the population is largely Hispanic and bilingual. Notably, our  
289 analysis demonstrated a significant relationship between ethnicity (Hispanic) and higher antibody titers  
290 over time at nearly every time point of interest, including infection where the analysis approached  
291 significance ( $p = 0.0624$ ). Other groups have demonstrated higher rates of Hispanic SARS-CoV-2  
292 seroconversion when compared to other ethnicities [45, 46] and have found that Hispanic ethnicity is  
293 linked to higher rates of seroprotection and seroconversion following H1N1 monovalent vaccination [47,  
294 48], but additional future studies with a large number of participants are needed to support a  
295 generalizable trend for antibody magnitude over time in this population.

296

297 In addition, we found that influenza vaccination was associated with higher antibody titers in our model  
298 examining symptoms following the 2<sup>nd</sup> dose and antibody titers following full vaccination, though it was  
299 not found to be significant following post-hoc testing. Although biological relevance for this finding is  
300 unknown, our group has previously shown that specific A(H1N1) CD4 responses correlate with SARS-  
301 CoV-2 specific CD4 T-cells, suggesting a protective effect of pre-existing influenza specific T-cells [7]. We  
302 speculate that this finding provides evidence for healthy and “trained” immune systems within our  
303 cohort, wherein epigenetic and metabolic reprogramming have augmented innate immune cells that  
304 enhance adaptive immunity to increase SARS-CoV-2 specific responses [7, 49].

305

306 Our study has several limitations. Sample sizes for each cohort examined were small due to variability in  
307 vaccination timelines and participant scheduling. Some individuals were excluded due to a confounding  
308 effect on our predictive modeling, which is controlled by the fixed effect of time. The natural infection  
309 group was further limited by the study timeline, as the first SARS-CoV-2 vaccination became available

310 shortly after enrollment began and therefore limited the number of individuals we were able to follow  
311 longitudinally. Additionally, our analysis only included quantitative antibody binding titers. Although  
312 recent work has demonstrated that higher binding antibodies correlate to higher neutralizing antibodies  
313 [13], expansive, multi-center longitudinal studies are needed. An ideal analysis would consist of a  
314 multivariate analysis of reactogenicity, demographics, and quantitatively characterized antibody, B-cell  
315 and T-cell responses, as immune protection seems to be contingent on all three tiers of the immune  
316 response [50]. Further, some of the predictors used in our statistical analysis were found to be  
317 significant in one test but not in post-hoc tests. Large, longitudinal studies are required to confirm a  
318 significant group difference, but the predictors utilized herein should be included in future analyses.  
319 Our bivariate analysis of symptoms experienced following the 1<sup>st</sup> and 2<sup>nd</sup> doses failed to demonstrate  
320 that individual symptoms can influence peak antibody titers following full vaccination. The same was  
321 true for race and ethnicity, which were not found to be significantly predictive for peak titers over time,  
322 though we contend that this is because these models failed to control for individual differences, or  
323 intercepts, to account for between-subjects' variability.

324

325 In conclusion, this work supports vaccination in COVID-19+ individuals to assure the most robust  
326 immune response possible. A combination of systemic and local symptoms is predictive of higher  
327 antibody titers, which may correlate to a higher degree of protection. While more work is needed to  
328 understand the role of antibodies against SARS-CoV-2 infection and breakthrough infection, particularly  
329 in the age of boosters and variants capable of immune escape, repeating this type of analysis at the  
330 population level will be critical in providing individual recommendations for future vaccine measures.

331 **Funding**

332 This work is part of the PARIS/SPARTA studies funded by the NIAID Collaborative Influenza Vaccine  
333 Innovation Centers (CIVIC) contract 75N93019C00051.

334

335 **Acknowledgements**

336 We express our sincerest gratitude to our intellectually curious and willing study participants for  
337 donating their blood and time to this study. We also thank the core research team that have made this  
338 study logistically possible, including Margaret Roach, Elizabeth Varghese, Celeste Sanchez, Ailet Reyes,  
339 and the entire team of phlebotomists at the University of Miami's Clinical Translational Research Site.

340

341 **Conflicts of Interest**

342 The Icahn School of Medicine at Mount Sinai has filed patent applications relating to SARS-CoV-2  
343 serological assays (U.S. Provisional Application Numbers: 62/994,252, 63/018,457, 63/020,503 and  
344 63/024,436) and NDV-based SARS-CoV-2 vaccines (U.S. Provisional Application Number: 63/251,020)  
345 which list Florian Krammer as co-inventor. Patent applications were submitted by the Icahn School of  
346 Medicine at Mount Sinai. Mount Sinai has spun out a company, Kantaro, to market serological tests for  
347 SARS-CoV-2. Florian Krammer has consulted for Merck and Pfizer (before 2020), and is currently  
348 consulting for Pfizer, Third Rock Ventures, Seqirus and Avimex. The Krammer laboratory is also  
349 collaborating with Pfizer on animal models of SARS-CoV-2.

350

351 All other authors declare that they have no known competing financial interests or personal  
352 relationships that could have appeared to influence the work reported in this paper.

353

Works Cited

- 354  
355  
356 1. Rodebaugh TL, Frumkin MR, Reiersen AM, et al. Acute Symptoms of Mild to Moderate COVID-19 Are  
357 Highly Heterogeneous Across Individuals and Over Time. *Open Forum Infect Dis* **2021**; 8:ofab090.
- 358 2. Zimmermann P, Curtis N. Factors That Influence the Immune Response to Vaccination. *Clin Microbiol*  
359 *Rev* **2019**; 32:e00084-18.
- 360 3. Khoury DS, Cromer D, Reynaldi A, et al. Neutralizing antibody levels are highly predictive of immune  
361 protection from symptomatic SARS-CoV-2 infection. *Nature Medicine* **2021**; 27:1205-11.
- 362 4. Garcia-Beltran WF, Lam EC, Astudillo MG, et al. COVID-19-neutralizing antibodies predict disease  
363 severity and survival. *Cell* **2021**; 184:476-88.e11.
- 364 5. da Silva Antunes R, Pallikkuth S, Williams E, et al. Differential T-Cell Reactivity to Endemic  
365 Coronaviruses and SARS-CoV-2 in Community and Health Care Workers. *The Journal of Infectious*  
366 *Diseases* **2021**; 224:70-80.
- 367 6. Mateus J, Grifoni A, Tarke A, et al. Selective and cross-reactive SARS-CoV-2 T cell epitopes in  
368 unexposed humans. *Science* **2020**; 370:89-94.
- 369 7. Pallikkuth S, Williams E, Pahwa R, Hoffer M, Pahwa S. Association of Flu specific and SARS-CoV-2  
370 specific CD4 T cell responses in SARS-CoV-2 infected asymptomatic health care workers. *Vaccine* **2021**.
- 371 8. Thevarajan I, Buising KL, Cowie BC. Clinical presentation and management of COVID-19. *Med J Aust*  
372 **2020**; 213:134-9.
- 373 9. FDA. Coronavirus Disease 2019 (COVID-19) EUA Informatin. Available at:  
374 [https://www.fda.gov/emergency-preparedness-and-response/mcm-legal-regulatory-and-policy-](https://www.fda.gov/emergency-preparedness-and-response/mcm-legal-regulatory-and-policy-framework/emergency-use-authorization#vaccines)  
375 [framework/emergency-use-authorization#vaccines](https://www.fda.gov/emergency-preparedness-and-response/mcm-legal-regulatory-and-policy-framework/emergency-use-authorization#vaccines). Accessed 13 January 2022 2022.
- 376 10. Amanat F, Stadlbauer D, Strohmeier S, et al. A serological assay to detect SARS-CoV-2 seroconversion  
377 in humans. *Nature Medicine* **2020**; 26:1033-6.



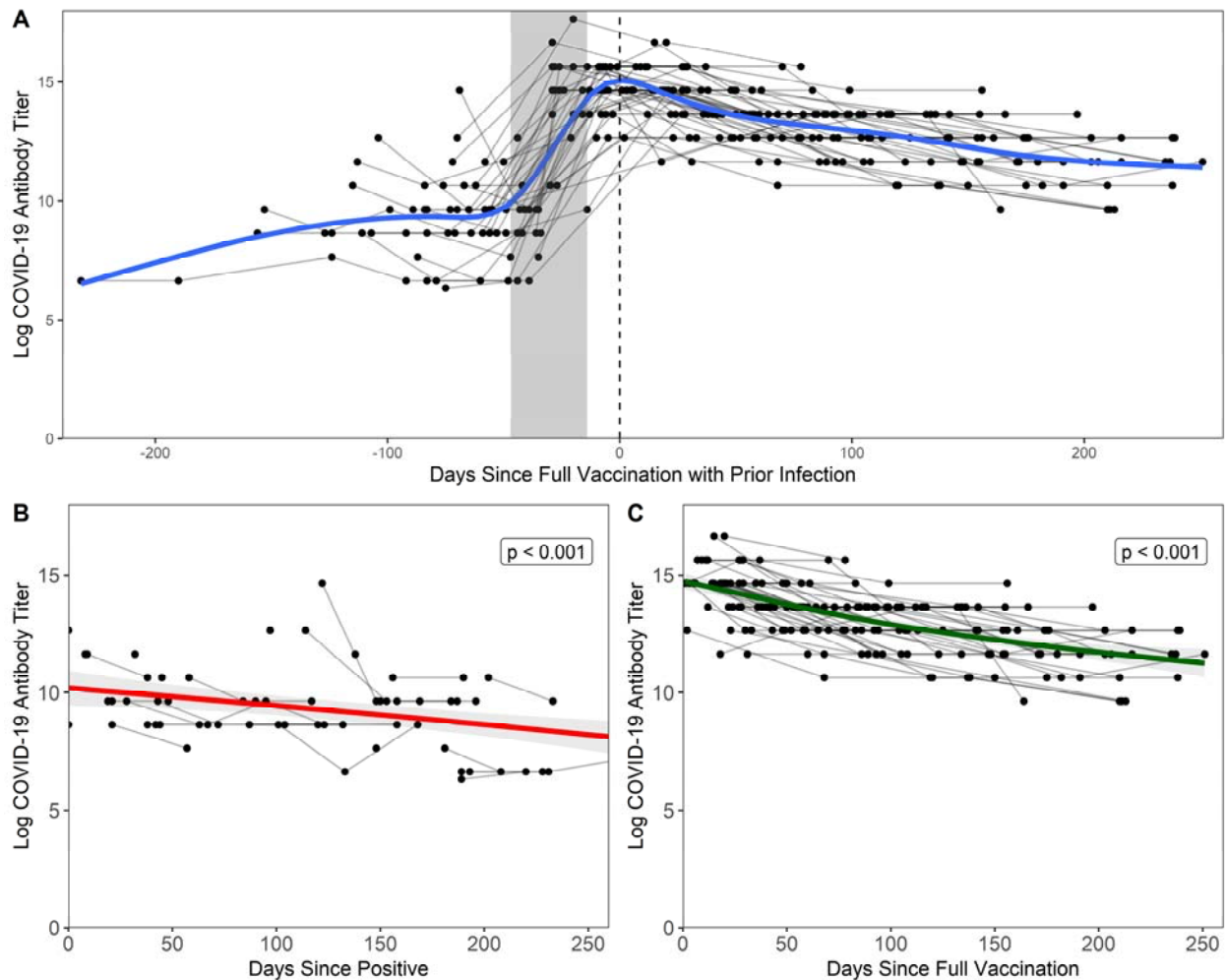
- 378 11. Stadlbauer D, Amanat F, Chromikova V, et al. SARS-CoV-2 Seroconversion in Humans: A Detailed  
379 Protocol for a Serological Assay, Antigen Production, and Test Setup. *Curr Protoc Microbiol* **2020**;  
380 57:e100.
- 381 12. Feng S, Phillips DJ, White T, et al. Correlates of protection against symptomatic and asymptomatic  
382 SARS-CoV-2 infection. *Nature Medicine* **2021**; 27:2032-40.
- 383 13. Gilbert PB, Montefiori DC, McDermott AB, et al. Immune correlates analysis of the mRNA-1273  
384 COVID-19 vaccine efficacy clinical trial. *Science*; 0:eab3435.
- 385 14. Crawford KHD, Dingens AS, Eguia R, et al. Dynamics of Neutralizing Antibody Titers in the Months  
386 After Severe Acute Respiratory Syndrome Coronavirus 2 Infection. *J Infect Dis* **2021**; 223:197-205.
- 387 15. Nagura-Ikeda M, Imai K, Kubota K, et al. Clinical characteristics and antibody response to SARS-CoV-2  
388 spike 1 protein using VITROS Anti-SARS-CoV-2 antibody tests in COVID-19 patients in Japan. *J Med*  
389 *Microbiol* **2021**; 70:001291.
- 390 16. Callegaro A, Borleri D, Farina C, et al. Antibody response to SARS-CoV-2 vaccination is extremely  
391 vivacious in subjects with previous SARS-CoV-2 infection. *J Med Virol* **2021**; 93:4612-5.
- 392 17. Lozano-Ojalvo D, Camara C, Lopez-Granados E, et al. Differential effects of the second SARS-CoV-2  
393 mRNA vaccine dose on T cell immunity in naive and COVID-19 recovered individuals. *Cell Rep* **2021**;  
394 36:109570.
- 395 18. Mungmunpuntipantip R, Wiwanitkit V. Antibody response to SARS-CoV-2 vaccination, previous  
396 SARS-CoV-2 infection, and change to single-dose vaccination. *J Med Virol* **2021**; 93:6474.
- 397 19. Hervé C, Laupèze B, Del Giudice G, Didierlaurent AM, Tavares Da Silva F. The how's and what's of  
398 vaccine reactogenicity. *npj Vaccines* **2019**; 4:39.
- 399 20. Salazar E, Christensen PA, Graviss EA, et al. Significantly Decreased Mortality in a Large Cohort of  
400 Coronavirus Disease 2019 (COVID-19) Patients Transfused Early with Convalescent Plasma Containing

- 401 High-Titer Anti-Severe Acute Respiratory Syndrome Coronavirus 2 (SARS-CoV-2) Spike Protein IgG. *Am J*  
402 *Pathol* **2021**; 191:90-107.
- 403 21. Tsang JS, Dobaño C, VanDamme P, et al. Improving Vaccine-Induced Immunity: Can Baseline Predict  
404 Outcome? *Trends in Immunology* **2020**; 41:457-65.
- 405 22. HANC. Cross-Network PBMC Processing Standard Operating Procedure, **2018**:1-45.
- 406 23. CDC. Interim Clinical Considerations for Use of COVID-19 Vaccines Currently Approved or Authorized  
407 in the United States. **2022**.
- 408 24. R Development Core Team. R: A language and environment for statistical computing. R Foundation  
409 for Statistical Computing. Vienna, Austria: R Foundation for Statistical Computing **2021**.
- 410 25. Wood SN. Stable and efficient multiple smoothing parameter estimation for generalized additive  
411 models. *Journal of the American Statistical Association* **2004**; 99:673-86.
- 412 26. Kuhn M. caret: Classification and Regression Training. R Package. 6.0-89 ed, **2021**.
- 413 27. Friedman JH, Trevor; Tibshirani, Robert Regularization Paths for Generalized Linear Models via  
414 Coordinate Descent. *Journal of Statistical Software* **2010**; 33(1):1-22.
- 415 28. Pinheiro J BD, DebRoy S, Sarkar D, R Core Team. \_nlme: Linear and Nonlinear Mixed Effects Models. R  
416 package version 31-152, **2021**.
- 417 29. Torsten H BF, Westfall P. Simultaneous Inference in General Parametric Models. *Biometric Journal*  
418 **2008**; 50:346-63.
- 419 30. Wickham H. ggplot2: Elegant Graphics for Data Analysis. New York, **2016**.
- 420 31. Levin EG, Lustig Y, Cohen C, et al. Waning Immune Humoral Response to BNT162b2 Covid-19 Vaccine  
421 over 6 Months. *New England Journal of Medicine* **2021**; 385:e84.
- 422 32. Röltgen K, Powell AE, Wirz OF, et al. Defining the features and duration of antibody responses to  
423 SARS-CoV-2 infection associated with disease severity and outcome. *Sci Immunol* **2020**; 5.

- 424 33. Gudbjartsson DF, Norddahl GL, Melsted P, et al. Humoral Immune Response to SARS-CoV-2 in  
425 Iceland. *New England Journal of Medicine* **2020**; 383:1724-34.
- 426 34. Dan JM, Mateus J, Kato Y, et al. Immunological memory to SARS-CoV-2 assessed for up to 8 months  
427 after infection. *Science* **2021**; 371.
- 428 35. CDC. Science Brief: SARS-CoV-2 Infection-induced and Vaccine-induced Immunity. **2021**.
- 429 36. Hall VJ, Foulkes S, Charlett A, et al. SARS-CoV-2 infection rates of antibody-positive compared with  
430 antibody-negative health-care workers in England: a large, multicentre, prospective cohort study  
431 (SIREN). *Lancet* **2021**; 397:1459-69.
- 432 37. Sheehan MM, Reddy AJ, Rothberg MB. Reinfection Rates Among Patients Who Previously Tested  
433 Positive for Coronavirus Disease 2019: A Retrospective Cohort Study. *Clin Infect Dis* **2021**; 73:1882-6.
- 434 38. Regev-Yochay G, Amit S, Bergwerk M, et al. Decreased infectivity following BNT162b2 vaccination: A  
435 prospective cohort study in Israel. *The Lancet Regional Health – Europe* **2021**; 7.
- 436 39. Abu-Raddad LJ, Chemaitelly H, Butt AA. Effectiveness of the BNT162b2 Covid-19 Vaccine against the  
437 B.1.1.7 and B.1.351 Variants. *N Engl J Med* **2021**; 385:187-9.
- 438 40. World Health Organization. Classification of Omicron (B.1.1.529): SARS-CoV-2 Variant of Concern.  
439 Accessed 29 November 2021 2021.
- 440 41. d'Arminio Monforte A, Tavelli A, Perrone PM, et al. Association between previous infection with  
441 SARS CoV-2 and the risk of self-reported symptoms after mRNA BNT162b2 vaccination: Data from 3,078  
442 health care workers. *EClinicalMedicine* **2021**; 36.
- 443 42. Menni C, Klaser K, May A, et al. Vaccine side-effects and SARS-CoV-2 infection after vaccination in  
444 users of the COVID Symptom Study app in the UK: a prospective observational study. *The Lancet*  
445 *Infectious Diseases* **2021**; 21:939-49.
- 446 43. Hwang YH, Song KH, Choi Y, et al. Can reactogenicity predict immunogenicity after COVID-19  
447 vaccination? *Korean J Intern Med* **2021**; 36:1486-91.

- 448 44. Mathioudakis AG, Ghrew M, Ustianowski A, et al. Self-Reported Real-World Safety and  
449 Reactogenicity of COVID-19 Vaccines: A Vaccine Recipient Survey. *Life (Basel)* **2021**; 11.
- 450 45. Kennedy JL, Forrest JC, Young SG, et al. Temporal Variations in Seroprevalence of SARS-CoV-2  
451 Infections by Race and Ethnicity in Arkansas. *medRxiv* **2021**:2021.07.15.21260213.
- 452 46. Rogawski McQuade ET, Guertin KA, Becker L, et al. Assessment of Seroprevalence of SARS-CoV-2 and  
453 Risk Factors Associated With COVID-19 Infection Among Outpatients in Virginia. *JAMA Network Open*  
454 **2021**; 4:e2035234-e.
- 455 47. Pass RF, Nachman S, Flynn PM, et al. Immunogenicity of Licensed Influenza A (H1N1) 2009  
456 Monovalent Vaccines in HIV-Infected Children and Youth. *Journal of the Pediatric Infectious Diseases*  
457 *Society* **2013**; 2:352-60.
- 458 48. Arguedas A, Soley C, Lindert K. Responses to 2009 H1N1 Vaccine in Children 3 to 17 Years of Age.  
459 *New England Journal of Medicine* **2010**; 362:370-2.
- 460 49. Netea MG, Domínguez-Andrés J, Barreiro LB, et al. Defining trained immunity and its role in health  
461 and disease. *Nature Reviews Immunology* **2020**; 20:375-88.
- 462 50. Rydzynski Moderbacher C, Ramirez SI, Dan JM, et al. Antigen-Specific Adaptive Immunity to SARS-  
463 CoV-2 in Acute COVID-19 and Associations with Age and Disease Severity. *Cell* **2020**; 183:996-1012.e19.
- 464

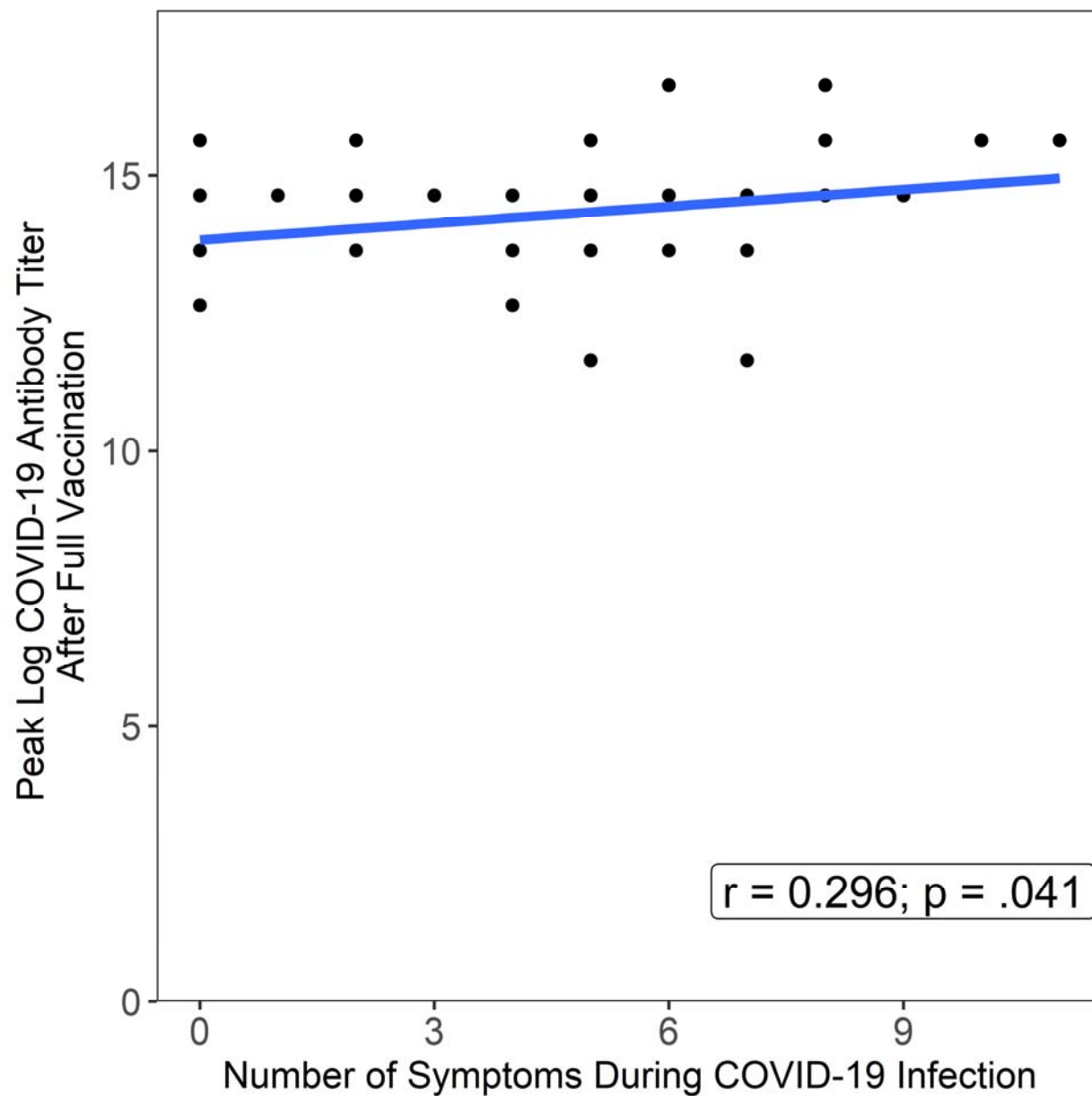
Figure 1: Antibody response following natural infection and vaccination



Each black point represents a sample from a participant, grey lines connect points from the same participant, and the grey shaded area represents the maximum number of days between doses relative to date of full vaccination (14 days after second dose, regardless of vaccine manufacturer). A) Days since full vaccination vs. log titers over time.  $t=0$  on the x-axis represents the day when COVID+ participants became fully vaccinated (2 weeks after second vaccination). Bi-phasic, generalized additive model (GAM) is visualized by a blue line. B) In unvaccinated COVID+ participants,  $\log_2$  antibody titers decay at a rate of  $-0.010$  per day after last positive COVID-19 test result. Fitted linear model is visualized by a red line. Note that three points were excluded from the above figure due to the temporal scale used to graphically depict the data but are included in the analyses herein. C) In vaccinated COVID+ participants,  $\log_2$

*antibody titers decay at a rate of -0.015 per day after full vaccination. Fitted linear model is visualized by a green line.*

Figure 1: Symptoms experienced during infection significantly influences peak titer responses following full vaccination.



*Number of symptoms during COVID-19 infection were positively correlated with peak log<sub>2</sub> COVID-19 antibody titers following full vaccination (Pearson's  $r = 0.296$ ;  $p = .041$ )*

Table 1: Characteristics of the Study Population Following Natural Infection, 1st Dose of Vaccine, and 2nd Dose of Vaccine

|  | <b>Post Infection</b>  | <b>Post Dose 1</b>   | <b>Post Dose 2</b>   |
|--|--|--|--|
| <b>n</b>   | 33   | 49   | 48   |
| <b>Gender, M/F</b>   | 14/19  | 17/32  | 16/32  |
| <b>Race</b>  | White [25 (76%)]<br>Black/African American [2 (6%)]<br>Asian [1 (3%)]<br>Other [5 (15%)] | White [39 (80%)]<br>Black/African American [2 (4%)]<br>Asian [2 (4%)]<br>Other [6 (12%)] | White [(39 (81%)]<br>Black/African American [2 (4%)]<br>Asian [2 (4%)]<br>Other [5 (110%)] |
| <b>Ethnicity, Hispanic/Not Hispanic</b>                        | 14/19 (42%/58%)  | 22/27 (45%/55%)  | 21/27 (44%/56%)  |
| <b>Median age [Range]</b>                                      | 39 [20-76]   | 39 [20-78]   | 39 [20-78]   |
| <b>Vaccine manufacturer, Pfizer/Moderna</b>                    | -  | 31/18 (63%/37%)  | 30/18 (62.5%/37.5%)  |
| <b>Median days since COVID diagnosis by PCR to entry</b>       | 101  | -  | -  |
| <b>SD</b>  | 74.87  |  |  |
| <b>Range</b>   | 8 - 292  |  |  |
| <b>Median days since COVID diagnosis by PCR to vaccination</b> | -  | 99   | 127  |
| <b>95% CI</b>  |  | 72 – 159   | 102-180  |



<sup>a</sup> Each count is the number of individuals who self-reported each symptom at the timepoint listed in each column. Percentages are based on the total n for each column.

<sup>b</sup> All samples collected following natural infection were included for analysis.

Table 1: Symptoms Experienced by the Study Cohort Following Natural Infection, 1st Dose of Vaccine, and 2nd Dose of Vaccine

|  | Post Infection | Post Dose 1 | Post Dose 2 |
|--|----------------|-------------|-------------|
| <b>Symptoms Reported During SARS-CoV-2 Infection<sup>a</sup></b> |                |             |             |
| Asymptomatic   | 10 (20%)       | -           | -           |
| Anosmia  | 27 (55%)       | -           | -           |
| Congestion/rhinorrhea  | 26 (53%)       | -           | -           |
| Cough  | 23 (47%)       | -           | -           |
| Difficulty breathing   | 12 (24%)       | -           | -           |
| Dysgeusia  | 26 (53%)       | -           | -           |
| Fatigue  | 31 (63%)       | -           | -           |
| Fever  | 18 (37%)       | -           | -           |
| Myalgias   | 28 (57%)       | -           | -           |
| Nausea or vomiting   | 5 (10%)        | -           | -           |
| Sore Throat  | 15 (31%)       | -           | -           |
| Upset Stomach  | 14 (29%)       | -           | -           |
| <b>Local Symptoms Reported Following Vaccination<sup>a</sup></b> |                |             |             |
| Injection site pain  | -              | 25 (51%)    | 26 (53%)    |
| Injection site redness   | -              | 2 (4%)      | 4 (8%)      |
| Injection site swelling  | -              | 4 (8%)      | 5 (10%)     |
| <b>Systemic Symptoms Reported</b>                                |                |             |             |

| Following Vaccination <sup>a</sup> |   |          |          |
|------------------------------------|---|----------|----------|
| Asymptomatic                       | - | 22 (45%) | 20 (41%) |
| Chills                             | - | 9 (18%)  | 11 (22%) |
| Fatigue                            | - | 14 (29%) | 19 (39%) |
| Fever                              | - | 10 (20%) | 10 (20%) |
| Headache                           | - | 14 (29%) | 12 (24%) |
| Myalgias/Muscle<br>Aches           | - | 12 (24%) | 14 (29%) |

<sup>a</sup> All symptoms reported during SARS-CoV-2 Infection, as well as local and systemic symptoms following vaccination were included in LASSO modeling as shown in Supplementary Table 1.

Table 1: Symptoms and demographic factors influence antibody responses following natural infection and full vaccination

| Category   | Predictor                         | Coefficient <sup>a</sup> | F-value <sup>a</sup> | p-value <sup>a</sup> | Pr(> z ) <sup>b</sup> |
|--|-----------------------------------|--------------------------|----------------------|----------------------|-----------------------|
| <b>Demographics, symptoms reported during infection and titers following natural infection</b> |                                   |                          |                      |                      |                       |
| <i>Days elapsed</i>  | Days since positive test          | -0.01                    | 9.991                | <b>0.004*</b>        | --                    |
| <i>Symptoms reported during infection</i>  | Difficulty breathing              | 0.58                     | 5.684                | 0.024*               | <b>0.020*</b>         |
|  | Subjective symptom severity       | 0.00                     | 2.524                | 0.123                | --                    |
| <b>Demographics, symptoms reported during infection and titers following full vaccination</b>  |                                   |                          |                      |                      |                       |
| <i>Days elapsed</i>  | Days since full vaccination       | -0.01                    | 258.176              | <b>&lt;0.0001*</b>   | --                    |
| <i>Symptoms reported during infection</i>  | Anosmia during infection          | 0.31                     | 2.910                | 0.096                | --                    |
| <i>Demographics</i>  | Age                               | 0.01                     | 6.000                | <b>0.019*</b>        | --                    |
|  | Ethnicity (Hispanic)              | 0.20                     | 5.265                | 0.027*               | 0.062                 |
|  | Flu vaccinated                    | -0.37                    | 3.612                | 0.064                | --                    |
|  | Gender (Male)                     | -0.09                    | 2.402                | 0.129                | --                    |
|  | Vaccine manufacturer (Pfizer)     | -0.16                    | 0.306                | 0.583                | --                    |
| <b>Demographics, symptoms reported following Dose 1, and titers following full vaccination</b> |                                   |                          |                      |                      |                       |
| <i>Days elapsed</i>  | Days since full vaccination       | -0.01                    | 262.855              | <b>&lt;0.0001*</b>   | --                    |
| <i>Symptoms</i>  | Chills after 1 <sup>st</sup> dose | 0.34                     | 4.915                | 0.032*               | 0.085                 |

|  |  |       |         |                    |               |
|--|--|-------|---------|--------------------|---------------|
| <i>reported after 1<sup>st</sup> vaccine dose</i>  | Injection site redness after 1 <sup>st</sup> dose  | 0.91  | 4.330   | 0.044*             | <b>0.038*</b> |
| <i>Demographics</i>  | Age  | 0.01  | 6.960   | <b>0.012*</b>      | --            |
|  | Ethnicity (Hispanic)                               | 0.28  | 4.583   | 0.038*             | <b>0.017*</b> |
|  | Flu vaccinated                                     | -0.15 | 1.771   | 0.191              | --            |
|  | Gender (Male)                                      | -0.08 | 2.288   | 0.138              | --            |
| <b>Demographics, symptoms reported following Dose 2, and titers following full vaccination</b> |  |       |         |                    |               |
| <i>Days elapsed</i>  | Days since full vaccination                        | -0.01 | 259.745 | <b>&lt;0.0001*</b> | --            |
| <i>Symptoms reported after 2<sup>nd</sup> dose</i>   | Fever  | 0.61  | 11.154  | 0.002*             | <b>0.003*</b> |
|  | Injection site swelling after 2 <sup>nd</sup> dose | 0.31  | 1.579   | 0.216              | --            |
|  | Subjective symptom severity                        | -0.03 | 3.064   | 0.088              | --            |
| <i>Demographics</i>  | Age  | 0.01  | 7.652   | <b>0.009*</b>      | --            |
|  | Ethnicity (Hispanic)                               | 0.32  | 6.683   | 0.013*             | <b>0.006*</b> |
|  | Flu vaccinated                                     | -0.29 | 4.405   | 0.042*             | 0.166         |
|  | Gender (Male)                                      | -0.05 | 3.452   | 0.071              | --            |

*Four LASSO models and linear mixed-effects (LME) p-values were generated to assess the predictive value of categorical and discrete variables while controlling for between-subjects' differences.*

*Significant categorical LASSO-generated variables underwent additional post-hoc Tukey to test for directionality and to correct for multiple comparisons. A p-value <0.05 was considered statistically significant.*

<sup>a</sup> LME for predictors of main effects

<sup>b</sup> Post-hoc Tukey test for directionality of categorical variables due to significant main effects