

# Effectiveness of an Inactivated Covid-19 Vaccine with Homologous and Heterologous Boosters against the Omicron (B.1.1.529) Variant

Otavio T. Ranzani, PhD<sup>1,2</sup>, Matt D.T. Hitchings, SD<sup>3</sup>, Rosana Leite de Melo, PhD<sup>4</sup>, Giovanni V. A. de França, PhD<sup>5</sup>, Cássia de Fátima R. Fernandes, MSc<sup>5</sup>, Margaret L Lind, PhD<sup>6</sup>, Mario Sergio Scaramuzzini Torres<sup>7</sup>, Daniel Henrique Tsuha<sup>8</sup>, Leticia C. S. David<sup>9</sup>, Rodrigo F. C. Said<sup>9</sup>, Maria Almiron, PhD<sup>9</sup>, Roberto D. de Oliveira, PhD<sup>8,10</sup>, Derek A.T. Cummings, PhD<sup>11,12†</sup>, Natalie E Dean, PhD<sup>13†</sup>, Jason R. Andrews, MD<sup>14†</sup>, Albert I. Ko, MD<sup>6,15†</sup>, Julio Croda, PhD<sup>6,8,16†</sup>

## Affiliations:

1. Barcelona Institute for Global Health, ISGlobal, Universitat Pompeu Fabra (UPF), Barcelona; CIBER Epidemiología y Salud Pública (CIBERESP), Madrid, Spain
2. Pulmonary Division, Heart Institute, Hospital das Clínicas, Faculdade de Medicina, São Paulo, SP, Brazil
3. Department of Biostatistics, College of Public Health & Health Professions, University of Florida, Gainesville, FL, USA
4. Secretaria Extraordinária de Enfrentamento à Covid-19, Ministério da Saúde, Brasília, DF, Brazil
5. Secretaria de Vigilância em Saúde, Ministério da Saúde, Brasília, DF, Brazil
6. Department of Epidemiology of Microbial Diseases, Yale School of Public Health, New Haven, CT, USA
7. Municipal Health Secretary of Manaus, AM, Brazil
8. Fiocruz Mato Grosso do Sul, Fundação Oswaldo Cruz, Campo Grande, MS, Brazil
9. Pan American Health Organization, Brasília, DF, Brazil
10. State University of Mato Grosso do Sul, Dourados, MS, Brazil
11. Department of Biology, University of Florida, Gainesville, FL, USA
12. Emerging Pathogens Institute, University of Florida, Gainesville, FL, USA
13. Department of Biostatistics & Bioinformatics, Rollins School of Public Health, Emory University
14. Division of Infectious Diseases and Geographic Medicine, Stanford University, Stanford, CA, USA
15. Instituto Gonçalo Moniz, Fundação Oswaldo Cruz, Salvador, BA, Brazil
16. Universidade Federal de Mato Grosso do Sul, Campo Grande, MS, Brazil

†Authors contributed equally

Correspondence to: Prof Julio Croda, Universidade Federal de Mato Grosso do Sul and Fundação Oswaldo Cruz, [julio.croda@fiocruz.br](mailto:julio.croda@fiocruz.br)

Keywords: Covid-19; vaccines, CoronaVac; BNT162b2; test-negative study; case-control study; booster; Brazil

Word count: 2,866

## Summary

**Background** Large outbreaks of the SARS-CoV-2 Omicron (B.1.1.529) variant have occurred in countries with high coverage of inactivated Covid-19 vaccines, raising urgent questions about effectiveness of these vaccines against disease and hospitalization with Omicron.

**Methods** We conducted a nationwide, test-negative, case-control study of adults who were tested for SARS-CoV-2 infection. We evaluated vaccine effectiveness against symptomatic Covid-19 and severe Covid-19 (hospital admission or deaths) for the primary series of CoronaVac and homologous and heterologous (BNT162b2) booster doses.

**Findings** Between September 6, 2021, and March 10, 2022, a total of 1,339,986 cases were matched to 1,339,986 test-negative controls. In the period of Omicron predominance, vaccine effectiveness  $\geq 180$  days after the second CoronaVac dose was 8.1% (95% CI, 7.0 to 9.1) and 57.0% (95% CI, 53.5 to 60.2) against symptomatic and severe Covid-19, respectively. Vaccine effectiveness against symptomatic disease was 15.0% (95% CI, 12.0 to 18.0) and 56.8% (95% CI, 56.3 to 57.4) in the period 8-59 days after receiving a homologous and heterologous booster, respectively. During the same interval, vaccine effectiveness against severe Covid-19 was 71.3% (95% CI, 60.3 to 79.2) and 85.5% (95% CI, 83.3 to 87.0) after receiving a homologous and heterologous booster, respectively. Whereas waning of vaccine effectiveness against symptomatic Covid-19 was observed  $\geq 90$  days after a homologous and heterologous booster, waning against severe Covid-19 was only observed after a homologous booster.

**Interpretation** A homologous CoronaVac booster dose provided limited additional protection, while a BNT162b2 booster dose afforded sustained protection against severe disease for at least three months.

## Introduction

The substantial initial protection of primary series Covid-19 vaccines against moderate and severe Covid-19 has been demonstrated through randomized clinical trials and observational studies.<sup>1-3</sup> Since then, accumulating evidence has demonstrated the importance of waning protection following primary series completion,<sup>4-6</sup> and decreased effectiveness of current vaccines to variants of concern (VoC), in particular the Omicron (B.1.1.529) variant.<sup>4,7</sup> Delineating the effectiveness of the range of booster vaccination strategies is therefore critical for guiding national and global policy.<sup>8</sup>

The majority of the existing vaccine effectiveness evidence is for mRNA vaccines, both as the primary series and as booster doses,<sup>7,9,10</sup> leaving significant evidence gaps regarding inactivated vaccine platforms. Inactivated vaccines are widely used, particularly in low- and middle-income countries, and represent half of the applied doses of Covid-19 vaccines worldwide as of Jan 2022.<sup>11</sup> Large Omicron epidemics associated with severe cases and deaths have been occurred in regions, most recently Eastern Asia, where inactivated vaccines have been extensively administered.<sup>12</sup> Brazil initiated booster vaccination in September 2021, after Delta VoC began to dominate in the country and three months before Omicron dominance.<sup>5</sup> Evidence concerning the effectiveness of inactivated vaccines with homologous or heterologous boosters is critically needed to inform vaccine policies in countries that used these vaccines in their initial rollout.

We evaluated the vaccine effectiveness of CoronaVac and BNT162b2 booster doses among Brazilian adults who completed the primary series of the CoronaVac vaccine in a nationwide test-negative case-control study. Our primary analysis focused on the period from December 25, 2021 to March 10, 2022, when circulation of the Omicron variant was predominant, and compared these findings

with those from the prior period, from September 6, 2021 to December 14, 2021 when the Delta variant was predominant in the country.

## Methods

### *Study setting and design*

We conducted a matched test-negative case-control study between September 6, 2021, and March 10, 2022, in Brazil. The national Covid-19 vaccination campaign started on January 17, 2021, and administration of booster doses began for the general population on September 6, 2021. The primary series used in Brazil were homologous schemes of Sinovac CoronaVac (two doses), Oxford-AstraZeneca ChAdOx1 nCoV-19 (two doses), Pfizer BNT162b2 (two doses), Janssen Ad26.COV2.S (single dose), and heterologous combinations of the above platforms in periods of vaccine shortage. All four vaccine platforms were administered as a homologous or heterologous booster dose. The booster vaccination followed an age-prioritization scheme. The interval between second and booster doses was initially six months and was subsequently shortened to four months during November 2021 in some states and nationally on December 20, 2021. The proportion of individuals with a primary series of CoronaVac who received a booster dose of Ad26.COV2.S or ChAdOx1 nCoV-19 was small; therefore we limited our analysis to booster doses of CoronaVac and BNT162b2.

### *Data sources*

We obtained individual-level information on Covid-19 outcomes from two national surveillance databases in Brazil: e-SUS and SIVEP-Gripe, which has information from notified cases, respectively, of mild Covid-19 illnesses and of severe acute respiratory illness, including all Covid-19 hospitalizations and deaths.<sup>3,5</sup> We obtained individual-level vaccination status from the national vaccination database (SI-PNI). Notification to these three systems is compulsory in Brazil. The three

databases have a unique identifier after pseudo-anonymization by the Ministry of Health. This study was approved by the ethical committee for research of Federal University of Mato Grosso do Sul (CAAE: 43289221.5.0000.0021)

The study population was adults (aged  $\geq 18$  years) residing in Brazil, and who underwent SARS-CoV-2 RT-PCR or rapid antigen testing associated with symptomatic illness<sup>13</sup> during the study period. We excluded individuals with missing or inconsistent information on age, sex, municipality of residence, and on vaccination and testing status and dates. We excluded RT-PCR/antigen tests that were not collected within 10 days of symptom onset, positive or negative RT-PCR/antigen tests with a positive RT-PCR/antigen test in the previous 90 days, and negative RT-PCR/antigen tests with a positive RT-PCR/antigen test occurring in the following 14 days, to avoid potentially misclassification. For individuals who received multiple RT-PCR or antigen tests during the study period, we included all eligible tests up to and including the first positive test. The number of RT-PCR/antigen tests performed during the study period in Brazil is shown in **eFigure 1**.

To assess waning of the booster doses over time since administration, we performed a separate, secondary, case-control analysis on the same study population, restricting to cases and controls who received a primary series of CoronaVac and received an RT-PCR/antigen test at least six months after their second dose, i.e. when eligible for a booster dose. The study design and matching procedure was otherwise the same.

#### *Selection of cases and matched controls*

Cases were defined as those from the study population who had Covid-19 symptoms and a positive SARS-CoV-2 RT-PCR/antigen test result. Eligible controls were defined as those from the study

population who had Covid-19 symptoms and a negative SARS-CoV-2 RT-PCR/antigen test result.

Finally, we excluded all RT-PCR/antigen tests that were obtained after receipt of a primary series of ChAdOx1 nCoV-19, BNT162b2 or Ad26.COV2.S vaccines.

We matched each case with one control according to the age category (ten-year bands), sex, municipality of residence, and RT-PCR/antigen test sample collection date ( $\pm 10$  days). After identification of each case, we randomly chose one control from the set of all eligible matching controls, allowing for replacement of controls between cases.

### *Statistical analysis*

We estimated the vaccine effectiveness of booster doses of CoronaVac and BNT162b2 against symptomatic Covid-19 in the 0-7 days, 8-59 days and  $\geq 60$  days after the booster dose. We also estimated the vaccine effectiveness of a booster dose against Covid-19 hospitalization and/or death by restricting the analysis population to case-control pairs in which the case was hospitalized or died.<sup>3,5</sup> The reference group was unvaccinated individuals. For the secondary analysis assessing waning effectiveness, we estimated the relative vaccine effectiveness (rVE),<sup>7,14</sup> using booster eligible ( $\geq 180$  days after the second dose) CoronaVac recipients as the reference group, and stratified the time since booster administration by 8-59 days, 60-89 days, and  $\geq 90$  days.

We used conditional logistic regression to estimate the adjusted odds ratio (aOR) of vaccination comparing cases and controls, and  $1 - \text{aOR}$  provided an estimate of vaccine effectiveness under the assumptions of a test negative design.<sup>15</sup> Because age is a strong determinant of Covid-19 outcomes, we adjusted for age (as a continuous variable, modeled with a restricted cubic spline) after matching to control for potential residual confounding within age bands. We also adjusted for

chronic comorbidities (including cardiovascular, renal, diabetes, chronic respiratory disorder, obesity, or immunosuppression, categorized as 0, 1, and  $\geq 2$  comorbidities), self-reported race, and any previous symptomatic event that were reported to the eSUS and SIVEP systems (categorized as 0, and  $\geq 1$ ).

We conducted an analysis of vaccine effectiveness within age subgroups (<60, 60-74 and vs  $\geq 75$  years old) by adding an interaction term with vaccination category. Because the analysis period incorporated a Delta (B.1.617.2) (September 6, 2021 to December 14, 2021) and Omicron (December 25, 2021 to March 10, 2022) period, we conducted separate analyses in each time period. We defined the end of the Delta period as when national Omicron VoC prevalence amongst sequenced genomes reached 25% and the beginning of the Omicron period as when the prevalence reached 75% in the GISAID database.<sup>16</sup> We conducted the same analyses using only RT-PCR tests as a sensitivity analysis, to address potential misclassification.

All analyses were done in R (v.4.1.2).<sup>17</sup>

### *Role of the funding source*

The funders of the study had no role in study design, data collection, data analysis, data interpretation, or writing of the report.

## **Results**

### *Descriptive Characteristics*

During the study period, there was a low incidence of Covid-19 cases and hospital admissions or deaths during the Delta wave compared to earlier periods in Brazil, until the end of December 2021,

which corresponded to the introduction and spread of the Omicron variant (**Figure 1**). Across all age groups in Brazil, on March 10, 2022, coverage was 82.3% for the first vaccine dose, 74.3% for second doses, and 32.6% for boosters (**Figure 1**).

After applying the inclusion and exclusion criteria, there were 3,021,428 RT-PCR/antigen tests from 2,849,801 individuals eligible for matching for the primary analysis. After matching one control per case, with replacement, the analysis population was 2,679,972 RT-PCR/antigen tests from 1,825,349 individuals for the primary analysis (**eFigure 2**). Controls were matched to multiple cases a median of 2 (IQR: 1-3) times. The characteristics for the selected case-control sets for CoronaVac during the Delta and Omicron periods is shown in **Table 1**.

#### *Vaccine effectiveness estimates*

Vaccine effectiveness estimates for two doses of CoronaVac, and for a booster dose of CoronaVac and BNT162b2, are displayed in **Figure 2** and in **eTable 1**. Relative to the Delta period, the Omicron period was associated with a substantial decrease in vaccine effectiveness against symptomatic disease for the primary series of CoronaVac (VE  $\geq 180$  days after second dose 33.5%, 95% CI 31.7 to 35.3; in the Delta period; compared to 8.1%, 95% CI 7.0 to 9.1, during the Omicron period). During the Omicron period, vaccine effectiveness 8-59 days after a homologous booster was 15.0% (95% CI, 12.0 to 18.0) against symptomatic Covid-19 and 71.3% (95% CI, 60.3 to 79.2) against severe Covid-19 and for a BNT162b2 booster, vaccine effectiveness was 56.8% (95% CI, 56.3 to 57.4) against symptomatic and 85.5% (95% CI, 83.3 to 87.0) against severe Covid-19.

We observed lower vaccine effectiveness against hospitalization or death in individuals aged  $\geq 75$  years, compared to younger individuals, for a primary series of CoronaVac, a CoronaVac booster,



and for a BNT162b2 booster (**Table 2**). However, vaccine effectiveness against hospitalization and death was significantly higher in individuals aged  $\geq 75$  years who received a heterologous BNT162b2 booster than a homologous CoronaVac booster  $\geq 90$  days of booster dose (79.9% vs 54.6%, respectively). Vaccine effectiveness against symptomatic disease was overall lower across age groups and an age-related trend was not discernable.

A total of 1,081,446 RT-PCR/antigen tests out of 1,234,305 eligible were selected into matched case-control pairs for the waning vaccine effectiveness (**eTable 2**). In the Omicron period, administration of a CoronaVac booster was associated with an increased VE against hospitalization or death relative to individuals who received their second dose  $\geq 180$  days previously (Table 2; rVE 8-59 days after third dose 42%, 95% CI 19.1 to 58.5), but minimal increase in VE against symptomatic disease (rVE 8-59 days after booster dose 4.0%, 95% CI 0.2 to 7.6). In addition, the additional protection gained by the booster dose against hospitalization or death waned after three months (rVE  $\geq 90$  days after booster dose 14.8%, 95% CI 5.4 to 23.2). In contrast, a BNT162b2 booster was associated with substantial increase in protection against hospitalization or death that was maintained for at least three months (**Table 3**; rVE  $\geq 90$  days after booster dose 66.9%, 95% CI 64.7 to 69.0). The gain in VE against symptomatic disease was lower and appeared to wane over time (**Table 3**).

A sensitivity analysis that was restricted to RT-PCR tests only (**eFigure 3**, **eTable 3**) obtained comparable estimates to the main analysis (**eTable 4**, **eTable 5**, **eTable 6** and **eTable 7**).

## Discussion

In this large observational study, we observed substantially lower effectiveness of a primary series of CoronaVac, and of a homologous CoronaVac and heterologous BNT162b2 booster dose, against symptomatic Covid-19 during an Omicron-dominated period compared to a Delta-dominated period. Effectiveness against severe outcomes was more similar between the two periods. In addition, a homologous booster dose conferred no additional protection against symptomatic disease during the Omicron-dominated period, and a moderate increase in protection against severe disease. Of note, the increased protection afforded by a homologous booster does waned during the three month period after its administration. In contrast, the effectiveness of a heterologous BNT162b2 booster dose was substantially higher against symptomatic and severe disease, and protection against severe disease appeared to be durable up to three months.

Our findings have immediate implications for the current policy recommendation to administer homologous booster doses of inactivated vaccines in the context of the current global spread of the Omicron variant.<sup>8</sup> There was overall a small benefit of a homologous booster and, for individuals aged  $\geq 75$  years, both the primary series and homologous booster afforded limited protection against severe disease (46-54%). However, a heterologous booster dose of BNT162b2 afforded a substantial increase in protection against severe disease in all age groups, including the elderly with age  $\geq 75$  years, compared to the primary series and some protection against symptomatic disease, albeit of uncertain duration. These findings suggest that the use of homologous CoronaVac booster doses, as currently recommended by the WHO<sup>8</sup>, may need to be revisited, as preference to heterologous booster doses may be crucial to reducing morbidity and mortality associated with Omicron epidemics. Further research should investigate combinations of heterologous booster doses other than BNT162b2, including non-mRNA vaccines.

The reduced effectiveness of primary vaccination with CoronaVac and subsequent boosting schemes was observed primarily for mild to moderate cases during the Omicron period. Low neutralizing antibody responses against the Omicron variant have been observed in individuals receiving two doses of CoronaVac<sup>18-20</sup> and three doses of CoronaVac.<sup>18,21</sup> A BNT162b2 booster dose has been shown to increase neutralizing antibodies against Omicron compared to a primary series of CoronaVac,<sup>18,21</sup> and to a higher level than individuals who received a primary series of BNT162b2.<sup>20</sup> The protection against severe disease for inactivated vaccines observed in this study speaks to the gaps in understanding of correlates of protection against severe disease, with a decoupling between measured neutralizing antibodies and clinical protection. This disparity has been observed for the primary series of CoronaVac, with moderate-to-high levels of protection against severe disease maintained beyond six months<sup>5</sup> despite the lack of detectable neutralizing antibodies during this period.<sup>22</sup>

Our findings on the effectiveness against severe Covid-19 of homologous and heterologous booster doses during the Delta period is consistent with a previous test-negative study in Brazil<sup>5</sup> and with a cohort study from Chile conducted during the same period.<sup>23</sup> For the Omicron period, our estimates are consistent with an ecological study from Hong Kong regarding the effectiveness of a primary vaccination with CoronaVac.<sup>12</sup> However, our estimates of vaccine effectiveness against severe disease for a homologous booster are lower than reported the study in Hong Kong. The differences in study design, previous attack rate in the population, time of follow-up, non-pharmaceutical interventions in place during the Omicron outbreak in Hong Kong, and limited sample size for severe disease in the Hong Kong study could explain these differences.<sup>12</sup>

There was evidence for waning of effectiveness against mild disease for homologous and heterologous boosters, and against severe disease for a homologous booster dose after three months during the Omicron period. This finding is consistent with numerous studies of primary series vaccination,<sup>4-6</sup> and with more recent studies of booster dose effectiveness over time.<sup>7,24</sup> Such studies should be interpreted with caution, as known biases in study designs can lead to the appearance of waning,<sup>10,25,26</sup> particularly due to the accrual of undetected infections in unvaccinated individuals. In this study, we attempted to mitigate this bias by estimating relative VE over time since booster dose administration. However, depletion of susceptible individuals who have received a primary series could still lead to apparent waning, and studies designed to identify and mitigate such biases should be prioritized to estimate the extent and timescale of waning effectiveness.

There are several strengths of our study. We used a nationwide database resulting in a large sample size and geographical coverage. We applied a matched test-negative design, including matching by time of epidemic and each one of 5,570 Brazilian municipalities. Finally, the timing of the booster campaign in Brazil together with the size and extent of the Omicron epidemic afforded us an opportunity to analyze a large population with three vaccine doses during an Omicron-dominated period, providing effectiveness estimates with relatively high precision even in age subgroups and over time.

Some limitations should be acknowledged. The data available for this study was collected as part of Brazil's passive surveillance efforts for Covid-19, so important covariates may be missing or incomplete. The distribution of RT-PCR tests and antigen tests, which have significantly different sensitivity, changed over the course of the study period, which could have led to a decrease in

estimated VE during the Omicron period through misclassification. However, a sensitivity analysis restricted to RT-PCR tests produced similar results. In addition, the test-negative controls may have been different during the Omicron and Delta periods, which could explain some of the difference in VE estimates. In particular, a higher proportion of controls were hospitalized or died during the Delta period (**Table 1**), implying either that other pathogens with severe outcomes were circulating during that period, or that less testing was being done in the outpatient setting during the Delta period. Finally, differences in effectiveness and waning patterns by age could be driven by other factors, including occupational exposure (e.g., health care workers) and personal risk mitigation behavior.

Overall, we found that primary vaccination with two doses of the CoronaVac vaccine provided 50-60% effectiveness against severe Covid-19 outcomes during the Omicron epidemic in Brazil, although effectiveness against symptomatic disease was close to zero. While a homologous booster afforded little additional protection, a heterologous booster dose of BNT162b2 restored high effectiveness against severe Covid-19, and moderate effectiveness against symptomatic disease up to three months.

**Contributors:** All authors conceived the study. DATC, ND, JRA, AIK, and JC contributed equally as senior authors. OTR completed analyses with guidance from MDTH, MLL, DATC, ND, JRA, AIK, and JC. MSST, DHT, LCSD, MDTH and OTR curated and validated the data. OTR and MDTH wrote the first draft of the manuscript. RLM, GVAF, CFRF, MA, and RS provided supervision. All authors contributed to, and approved, the final manuscript. JC is the guarantor. The corresponding author attests that all listed authors meet authorship criteria and that no others meeting the criteria have been omitted.

**Declaration of interests:** We declare no competing interests.

**Acknowledgments:** We thank the Pan American Health Organization for its support.

**Funding:** No external funding was provided for this study. JC is supported by the Oswaldo Cruz Foundation (Edital Covid-19 – resposta rápida: 48111668950485). OTR is funded by a Sara Borrell fellowship (CD19/00110) from the Instituto de Salud Carlos III. OTR acknowledges support from the Spanish Ministry of Science and Innovation through the Centro de Excelencia Severo Ochoa 2019-2023 programme (CEX2018-000806-S) and from the Generalitat de Catalunya through the Centres de Recerca de Catalunya (CERCA) programme. These institutions had no role in the study design, data collection, data analysis, data interpretation, or writing of the report.

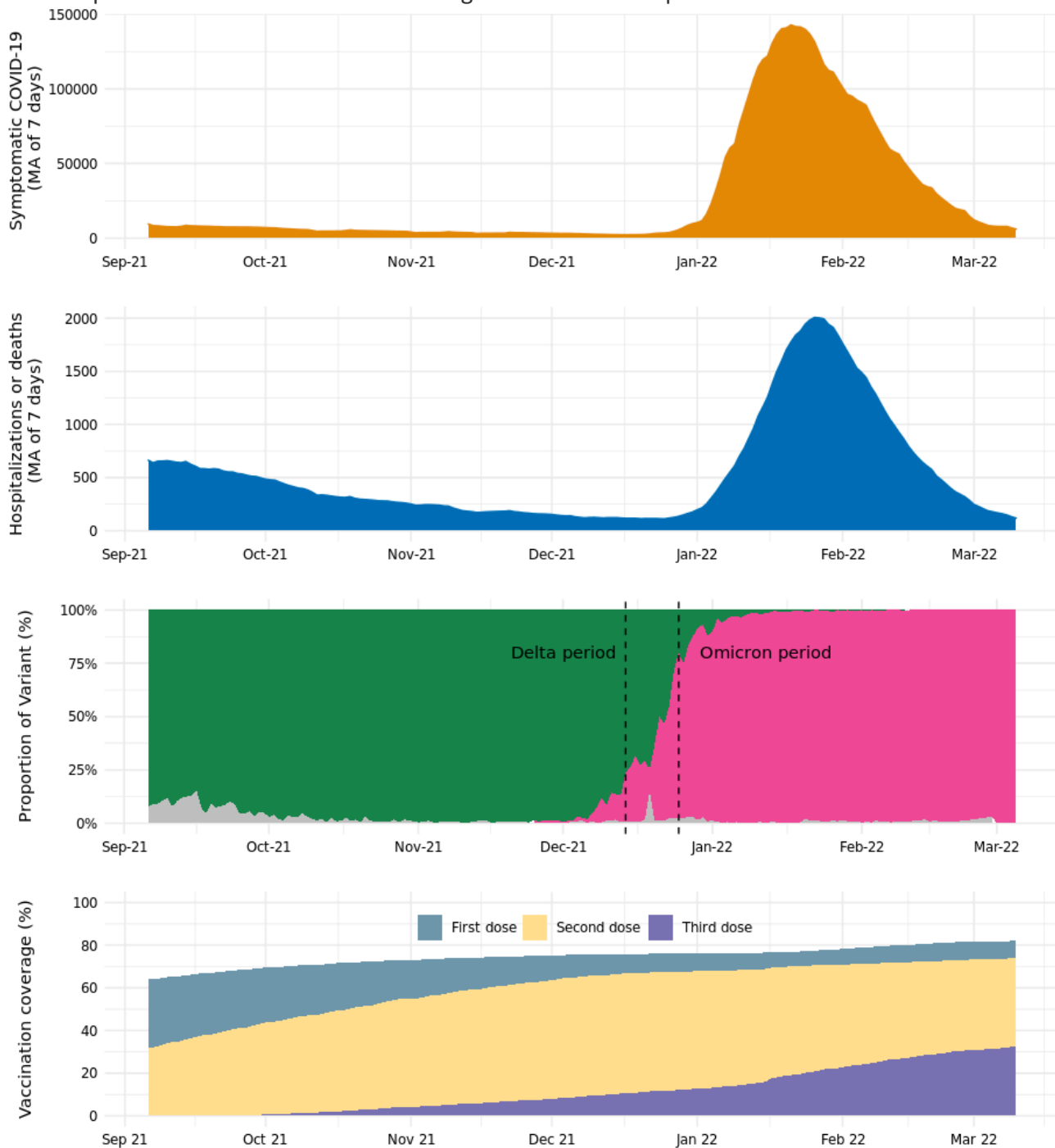
## References

1. Polack FP, Thomas SJ, Kitchin N, et al. Safety and Efficacy of the BNT162b2 mRNA Covid-19 Vaccine. *N Engl J Med* 2020;383(27):2603–15.
2. Voysey M, Clemens SAC, Madhi SA, et al. Safety and efficacy of the ChAdOx1 nCoV-19 vaccine (AZD1222) against SARS-CoV-2: an interim analysis of four randomised controlled trials in Brazil, South Africa, and the UK. *Lancet* 2021;397(10269):99–111.
3. Ranzani OT, Hitchings MDT, Dorion M, et al. Effectiveness of the CoronaVac vaccine in older adults during a gamma variant associated epidemic of covid-19 in Brazil: test negative case-control study. *BMJ* 2021;n2015.
4. Accorsi EK, Britton A, Fleming-Dutra KE, et al. Association Between 3 Doses of mRNA COVID-19 Vaccine and Symptomatic Infection Caused by the SARS-CoV-2 Omicron and Delta Variants. *JAMA* 2022;327(7):639.
5. Cerqueira-Silva T, Katikireddi SV, de Araujo Oliveira V, et al. Vaccine effectiveness of heterologous CoronaVac plus BNT162b2 in Brazil. *Nat Med* [Internet] 2022 [cited 2022 Mar 26]; Available from: <https://www.nature.com/articles/s41591-022-01701-w>
6. Chemaitelly H, Tang P, Hasan MR, et al. Waning of BNT162b2 Vaccine Protection against SARS-CoV-2 Infection in Qatar. *N Engl J Med* 2021;385(24):e83.
7. Andrews N, Stowe J, Kirsebom F, et al. Covid-19 Vaccine Effectiveness against the Omicron (B.1.1.529) Variant. *N Engl J Med* 2022;NEJMoa2119451.
8. Strategic Advisory Group of Experts on Immunization - SAGE (WHO). Highlights from the Meeting of the Strategic Advisory Group of Experts (SAGE) on Immunization, 4-7 October 2021. [Internet]. 2021 [cited 2021 Oct 22]; Available from: [https://cdn.who.int/media/docs/default-source/immunization/sage/2021/october/sage\\_oct2021\\_meetinghighlights.pdf?sfvrsn=3dcae610\\_15](https://cdn.who.int/media/docs/default-source/immunization/sage/2021/october/sage_oct2021_meetinghighlights.pdf?sfvrsn=3dcae610_15)
9. Abu-Raddad LJ, Chemaitelly H, Ayoub HH, et al. Effect of mRNA Vaccine Boosters against SARS-CoV-2 Omicron Infection in Qatar. *N Engl J Med* 2022;NEJMoa2200797.
10. Feikin DR, Higdon MM, Abu-Raddad LJ, et al. Duration of effectiveness of vaccines against SARS-CoV-2 infection and COVID-19 disease: results of a systematic review and meta-regression. *The Lancet* 2022;399(10328):924–44.
11. Dolgin E. Omicron thwarts some of the world's most-used COVID vaccines. *Nature* 2022;601(7893):311–311.
12. McMenamin ME, Nealon J, Lin Y, et al. Vaccine effectiveness of two and three doses of BNT162b2 and CoronaVac against COVID-19 in Hong Kong [Internet]. *Infectious Diseases (except HIV/AIDS)*; 2022 [cited 2022 Mar 26]. Available from: <http://medrxiv.org/lookup/doi/10.1101/2022.03.22.22272769>
13. Brazilian Ministry of Health. Epidemiologic Surveillance Guide. National Emergency of Public Health Concern due to the COVID-19 disease. [Internet]. [cited 2021 May 25]; Available from: [https://www.conasems.org.br/wp-content/uploads/2021/03/Guia-de-vigila%CC%82ncia-epidemiolo%CC%81gica-da-covid\\_19\\_15.03\\_2021.pdf](https://www.conasems.org.br/wp-content/uploads/2021/03/Guia-de-vigila%CC%82ncia-epidemiolo%CC%81gica-da-covid_19_15.03_2021.pdf)
14. Thompson MG, Stenehjem E, Grannis S, et al. Effectiveness of Covid-19 Vaccines in Ambulatory and Inpatient Care Settings. *N Engl J Med* 2021;385(15):1355–71.
15. Sullivan SG, Tchetgen Tchetgen EJ, Cowling BJ. Theoretical Basis of the Test-Negative Study Design for Assessment of Influenza Vaccine Effectiveness. *Am J Epidemiol* 2016;184(5):345–53.
16. GISAID - hCov19 Variants. Export 18/03/2022. [Internet]. [cited 2022 Mar 18]; Available from: <https://www.gisaid.org/hcov19-variants/>
17. R Core Team. R: A language and environment for statistical computing. [Internet]. Vienna, Austria: R Foundation for Statistical Computing; 2021. Available from: <https://www.R-project.org/>
18. Cheng SMS, Mok CKP, Leung YWY, et al. Neutralizing antibodies against the SARS-CoV-2 Omicron variant BA.1 following homologous and heterologous CoronaVac or BNT162b2 vaccination. *Nat Med* 2022;28(3):486–9.
19. Lu L, Mok BW-Y, Chen L-L, et al. Neutralization of Severe Acute Respiratory Syndrome Coronavirus 2 Omicron Variant by Sera From BNT162b2 or CoronaVac Vaccine Recipients. *Clinical Infectious Diseases*

- 2021;ciab1041.
20. Pérez-Then E, Lucas C, Monteiro VS, et al. Neutralizing antibodies against the SARS-CoV-2 Delta and Omicron variants following heterologous CoronaVac plus BNT162b2 booster vaccination. *Nat Med* 2022;28(3):481–5.
  21. Costa Clemens SA, Weckx L, Clemens R, et al. Heterologous versus homologous COVID-19 booster vaccination in previous recipients of two doses of CoronaVac COVID-19 vaccine in Brazil (RHH-001): a phase 4, non-inferiority, single blind, randomised study. *The Lancet* 2022;399(10324):521–9.
  22. Zeng G, Wu Q, Pan H, et al. Immunogenicity and safety of a third dose of CoronaVac, and immune persistence of a two-dose schedule, in healthy adults: interim results from two single-centre, double-blind, randomised, placebo-controlled phase 2 clinical trials. *The Lancet Infectious Diseases* 2022;22(4):483–95.
  23. Jara A, Undurraga EA, Zubizarreta JR, et al. Effectiveness of Homologous and Heterologous Booster Shots for an Inactivated SARS-CoV-2 Vaccine: A Large-Scale Observational Study. *SSRN Journal [Internet]* 2022 [cited 2022 Mar 26]; Available from: <https://www.ssrn.com/abstract=4005130>
  24. Ferdinands JM, Rao S, Dixon BE, et al. Waning 2-Dose and 3-Dose Effectiveness of mRNA Vaccines Against COVID-19—Associated Emergency Department and Urgent Care Encounters and Hospitalizations Among Adults During Periods of Delta and Omicron Variant Predominance — VISION Network, 10 States, August 2021–January 2022. *MMWR Morb Mortal Wkly Rep* 2022;71(7):255–63.
  25. Hitchings MDT, Ranzani OT, Lind ML, et al. Change in COVID-19 risk over time following vaccination with CoronaVac: A test-negative case-control study. *medRxiv* 2021;
  26. Lipsitch M, Goldstein E, Ray GT, Fireman B. Depletion-of-susceptibles bias in influenza vaccine waning studies: how to ensure robust results. *Epidemiol Infect* 2019;147:e306.



**Figure 1.** Times series of Covid-19 cases and Covid-19 hospital admissions or deaths, variants of concern prevalence and vaccination coverage in Brazil from Sep 2021 to Mar 2022.



Daily prevalence of SARS-CoV-2 variants among genotyped isolates were obtained from the GISAID (global initiative on sharing avian influenza data) database (extraction on 18 March 2022). Green represents Delta prevalence, pink area represents Omicron prevalence and gray area represents others. Second dose coverage includes a single dose of Ad26.COVS. MA - moving averages.

**Figure 2.** Vaccine effectiveness against symptomatic Covid-19 (A) and Covid-19 hospitalization or death (B) of primary two-dose vaccination with CoronaVac and subsequent booster vaccination with CoronaVac and BNT162b2, according to days since receiving the last vaccine dose.



**Table 1.** Characteristics of adults in Brazil, who were selected into case test negative pairs for the analysis of vaccine effectiveness during the Delta period (September 6, 2021 to December 14, 2021) and the Omicron period (December 25, 2021 to March 10, 2022)

	Matched pairs for Delta period		Matched pairs for Omicron period	
	Controls (n=158,204)^	Cases (n=158,204)^	Controls (n=1,170,660)^	Cases (n=1,170,660)^
<b>Demographics</b>				
Age, mean (SD), years	45.2 (20)	45.5 (20)	42.5 (19)	42.7 (19)
Age categories, n (%)				
18-39 years	79840 (50.5)	77609 (49.1)	665105 (56.8)	655119 (56.0)
40-59 years	32396 (20.5)	34465 (21.8)	244926 (20.9)	254788 (21.8)
60-79 years	40242 (25.4)	39577 (25.0)	224831 (19.2)	218729 (18.7)
≥80 years	5726 (3.6)	6553 (4.1)	35798 (3.1)	42024 (3.6)
Male sex, n (%)	73151 (46.2)	73151 (46.2)	487577 (41.6)	487577 (41.6)
Self-reported race <sup>†</sup> , n (%)				
White/Branca	67441 (42.6)	68880 (43.5)	508318 (43.4)	521769 (44.6)
Brown/Pardo	49503 (31.3)	47593 (30.1)	359243 (30.7)	345312 (29.5)
Black/Preta	6174 (3.9)	6005 (3.8)	48219 (4.1)	43551 (3.7)
Yellow/ Amarela	1916 (1.2)	2147 (1.4)	20152 (1.7)	18832 (1.6)
Indigenous/Indigena	1151 (0.7)	1335 (0.8)	4942 (0.4)	2683 (0.2)
Missing	32019 (20.2)	32244 (20.4)	229786 (19.6)	238513 (20.4)
Region of residence				
North	11304 (7.1)	11304 (7.1)	58275 (5.0)	58275 (5.0)
Northeast	20827 (13.2)	20827 (13.2)	170898 (14.6)	170898 (14.6)
Central-West	14675 (9.3)	14675 (9.3)	95305 (8.1)	95305 (8.1)
Southeast	72739 (46.0)	72739 (46.0)	622171 (53.1)	622171 (53.1)
South	38659 (24.4)	38659 (24.4)	224011 (19.1)	224011 (19.1)
Reported number of chronic comorbidities <sup>‡</sup> , n (%)				
None	139383 (88.1)	136201 (86.1)	1082801 (92.5)	1084006 (92.6)

One or two	17965 (11.4)	20785 (13.1)	85348 (7.3)	83685 (7.1)
Three or more	856 (0.5)	1218 (0.8)	2511 (0.2)	2969 (0.3)
<b>Prior SARS-CoV-2 exposure**</b>				
Previous symptomatic events notified to the surveillance system**, n (%)	40906 (25.9)	28484 (18.0)	292759 (25.0)	294185 (25.1)
Positive SARS-CoV-2 test result <sup>††</sup> , n (%)	8919 (5.6)	2520 (1.6)	79469 (6.8)	55909 (4.8)
<b>Interval between symptoms onset and RT-PCR testing, median (p25-p75), days</b>	3 [2, 5]	3 [2, 5]	3 [2, 4]	3 [2, 4]
<b>Hospitalization or death</b>	7777 (4.9)	18765 (11.9)	19569 (1.7)	31758 (2.7)
<b>Vaccination status</b>				
Not vaccinated, n (%)	35813 (22.6)	49247 (31.1)	140869 (12.0)	168849 (14.4)
<i>Primary vaccination with CoronaVac</i>				
Single dose, 0-13 days, n (%)	2186 (1.4)	2589 (1.6)	1520 (0.1)	1184 (0.1)
Single dose, ≥14 days, n (%)	13535 (8.6)	13647 (8.6)	66341 (5.7)	64872 (5.5)
Two doses, 0-13 days, n (%)	4167 (2.6)	3595 (2.3)	2803 (0.2)	2472 (0.2)
Two doses, 14-89 days, n (%)	29220 (18.5)	23591 (14.9)	47423 (4.1)	42557 (3.6)
Two doses, 90-179 days, n (%)	36577 (23.1)	35158 (22.2)	328700 (28.1)	369217 (31.5)
Two doses, ≥180 days, n (%)	23722 (15.0)	25134 (15.9)	115119 (9.8)	135740 (11.6)
<i>Booster vaccination</i>				
Third dose of CoronaVac, 0-7 days, n (%)	112 (0.1)	99 (0.1)	891 (0.1)	987 (0.1)
Third dose of CoronaVac, 8-59 days, n (%)	549 (0.3)	454 (0.3)	6821 (0.6)	7156 (0.6)
Third dose of CoronaVac, ≥60 days, n (%)	62 (0.0)	78 (0.0)	18414 (1.6)	23234 (2.0)
Third dose of BNT162b2, 0-7 days, n (%)	1864 (1.2)	1899 (1.2)	15484 (1.3)	15431 (1.3)
Third dose of BNT162b2, 8-59 days, n (%)	9864 (6.2)	2524 (1.6)	113038 (9.7)	62988 (5.4)
Third dose of BNT162b2, ≥60 days, n (%)	533 (0.3)	189 (0.1)	313237 (26.8)	275973 (23.6)
<b>Interval between first dose and testing, median (p25-p75), days</b>	33 [20, 63]	33 [19, 65]	140 [97, 168]	142 [102, 172]
<b>Interval between second dose and testing, median (p25-p75), days</b>	141 [58, 180]	148 [70, 186]	139 [117, 175]	141 [119, 179]
<b>Interval between third dose and testing, median (p25-p75), days</b>	22 [11, 38]	10 [6, 28]	86 [52, 104]	91 [64, 107]

**Table 2.** Effectiveness of homologous or heterologous booster against symptomatic Covid-19 and Covid-19 hospital admissions or deaths in adults stratified by age during Omicron period in Brazil

	Symptomatic Covid-19			Hospitalization or Death		
	<60 years	60-74 years	≥75 years	<60 years	60-74 years	≥75 years
Not vaccinated	Reference	Reference		Reference	Reference	Reference
Two doses, ≥180 days	3.7% (2.5 to 5.0)	21.8% (19.3 to 24.2)	27.2% (23.5 to 30.7)	68.8% (63.2 to 73.6)	58.9% (52.9 to 64.1)	46.2% (39.4 to 52.2)
Homologous booster						
Third dose of CoronaVac, 8-59 days	13.8% (10.3 to 17.1)	22.1% (15.0 to 28.5)	38.7% (27.5 to 48.2)	71.9% (41.9 to 86.4)	80.9% (69.4 to 88.0)	46.2% (3.5 to 70.1)
Third dose of CoronaVac, ≥60 days	-10.4% (-15.3 to -5.2)	8.8% (4.5 to 12.9)	16.9% (12.2 to 21.3)	57.6% (15.1 to 78.8)	69.9% (62.9 to 75.6)	54.6% (47.9 to 60.3)
Heterologous booster						
Third dose of BNT162b2, 8-59 days	57.2% (56.6 to 57.8)	57.2% (55.7 to 58.7)	63.7% (61.2 to 66.0)	90.8% (88.5 to 92.7)	86.1% (83.4 to 88.4)	80.2% (76.3 to 83.5)
Third dose of BNT162b2, ≥60 days	33.3% (32.5 to 34.0)	41.9% (40.2 to 43.5)	45.9% (43.4 to 48.3)	89.5% (87.5 to 91.2)	89.6% (88.2 to 90.9)	79.9% (77.5 to 82.0)

**Table 3.** Vaccine effectiveness of a homologous and heterologous booster dose, relative to primary vaccination with CoronaVac during the period greater or equal to 180 days after the 2nd dose

		Symptomatic Covid-19	Hospitalization or Death
	N	Relative VE (95% CI)	Relative VE (95% CI)
Two doses, ≥180 days	275,508	Reference	Reference
<b>Homologous booster</b>			
Third dose of CoronaVac, 8-59 days	13,498	4.0% (0.2 to 7.6)	42.0% (19.1 to 58.5)
Third dose of CoronaVac, 60-79 days	10,347	-3.7% (-7.8 to 0.6)	35.7% (20.2 to 48.2)
Third dose of CoronaVac, ≥90 days	30,865	-14.2% (-16.7to -11.6)	14.8% (5.4 to 23.2)
<b>Heterologous booster</b>			
Third dose of BNT162b2, 8-59 days	165,041	53.5% (52.9 to 54.2)	64.2% (60.2 to 67.8)
Third dose of BNT162b2, 60-89 days	197,924	34.3% (33.4 to 35.2)	72.2% (69.9 to 74.4)
Third dose of BNT162b2, ≥90 days	356,290	24.6% (23.7 to 25.4)	66.9% (64.7 to 69.0)

## Supplementary material

**eFigure 1.** SARS-CoV-2 RT-PCR and rapid antigen tests performed in Brazil since January 2021

**eFigure 2.** Study flow chart showing inclusion of cases and controls for the primary analysis

**eTable 1.** Effectiveness of CoronaVac and homologous or heterologous booster against symptomatic Covid-19 and hospital admissions or deaths in adults in Brazil

**eTable 2.** Characteristics of adults in Brazil, who were selected into case test negative pairs for the CoronaVac analysis during the Delta period (September 6, 2021 to December 14, 2021) and Omicron period (December 25, 2021 to March 10, 2022), for the analysis of relative vaccine effectiveness

**eFigure 3.** Flow chart showing inclusion of cases and controls for the sensitivity analysis including only RT-PCR SARS-CoV-2 tests

**eTable 3.** Characteristics of adults in Brazil, who were selected into case-test negative pairs for the sensitivity analysis including only RT-PCR tests during the Delta period (September 6, 2021 to December 14, 2021) and Omicron period (December 25, 2021 to March 10, 2022)

**eTable 4.** Effectiveness of CoronaVac and homologous or heterologous booster against symptomatic Covid-19 and Covid-19 hospital admission or deaths in adults in Brazil, from the sensitivity analysis including RT-PCR SARS-CoV-2 tests only

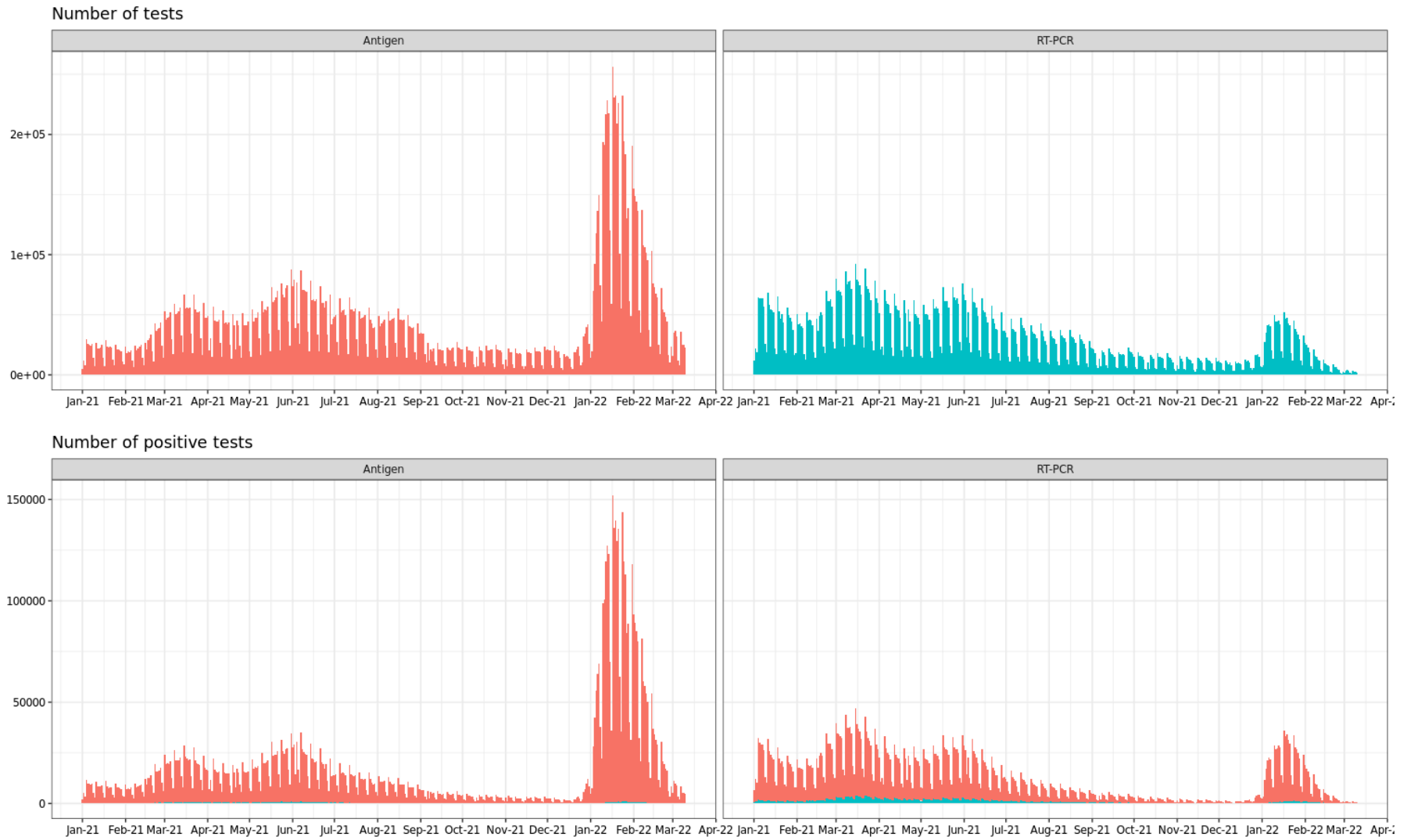
**eTable 5.** Characteristics of adults in Brazil, who were selected into case-test negative pairs for the sensitivity analysis using RT-PCR SARS-CoV-2 tests only, during the Delta period (September 6, 2021 to December 14, 2021) and Omicron period (December 25, 2021 to March 10, 2022), for the analysis of relative vaccine effectiveness

**eTable 6.** Effectiveness of homologous or heterologous booster against symptomatic Covid-19 and Covid-19 hospital admission or deaths in adults stratified by age during Omicron period in Brazil from the sensitivity analysis including RT-PCR SARS-CoV-2 tests only

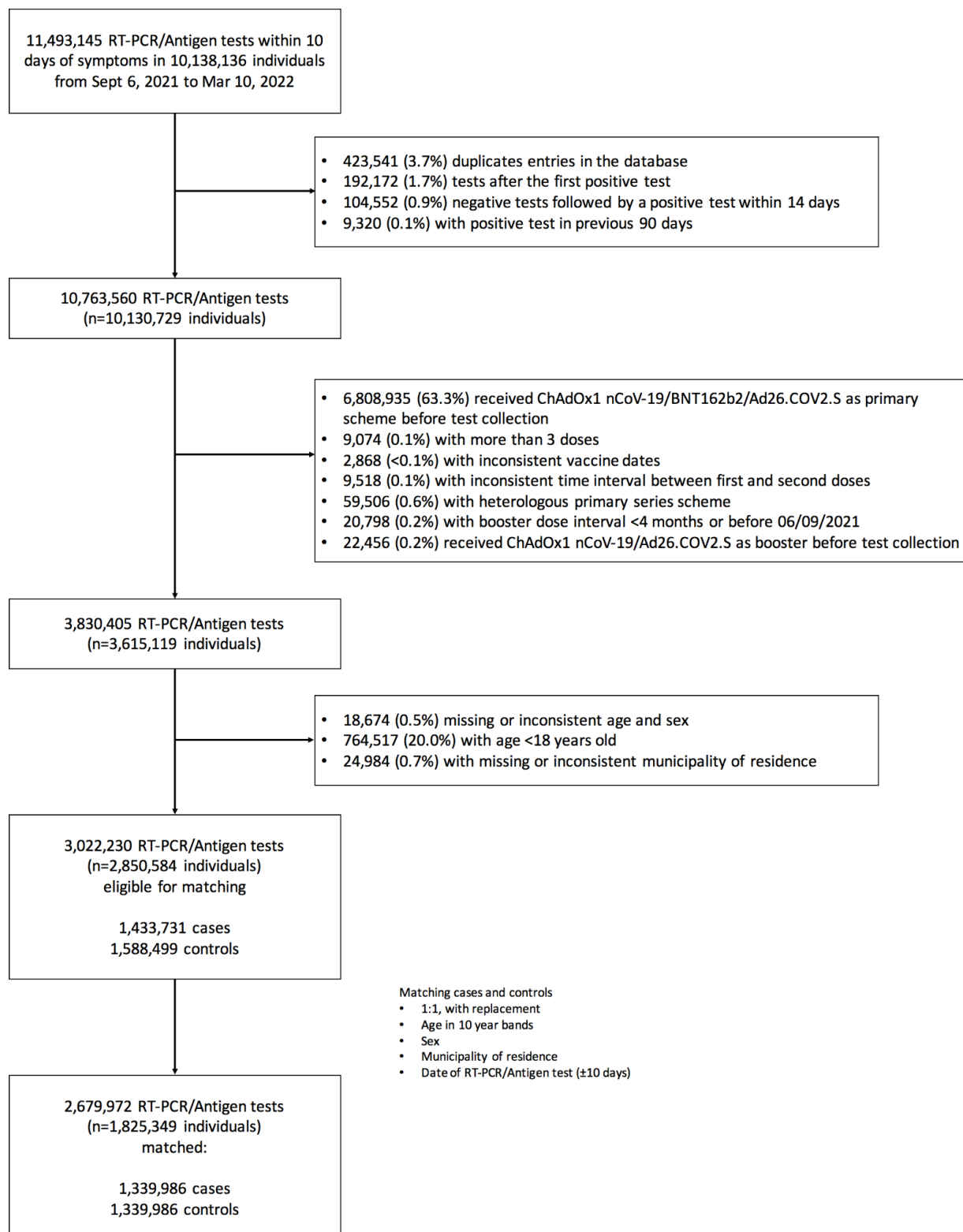
**eTable 7.** Vaccine effectiveness of homologous and heterologous booster relative to those at least 180 days after the second dose of a primary series of CoronaVac during the Omicron period, from the sensitivity analysis including RT-PCR SARS-CoV-2 tests only



**eFigure 1.** SARS-CoV-2 RT-PCR and rapid antigen tests performed in Brazil since January 2021



**eFigure 2.** Study flow chart showing inclusion of cases and controls for the primary analysis



**eTable 1.** Effectiveness of CoronaVac and homologous or heterologous booster against symptomatic Covid-19 and hospital admissions or deaths in adults in Brazil

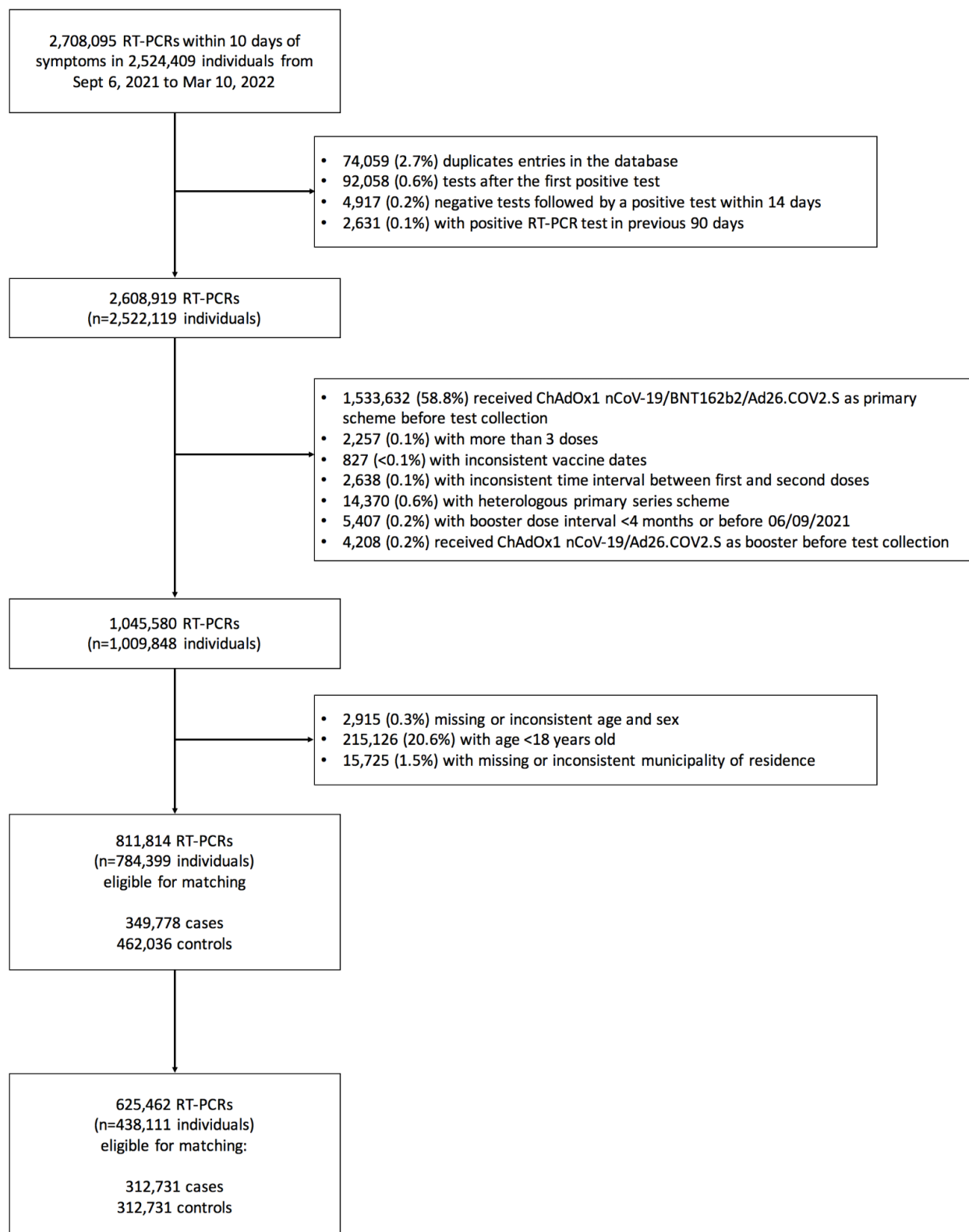
	Cases		Hospitalization or death	
	Delta	Omicron	Delta	Omicron
<b>Not vaccinated</b>	Reference	Reference	Reference	Reference
<b>Single dose, within 0-13 days</b>	5.5% (-0.5-11.2)	33.8% (28.5-38.7)	11.2% (-20.2-37.1)	7.5% (-52.4-59.3)
<b>Single dose, ≥14 days</b>	27.1% (24.9-29.2)	16.5% (15.3-17.6)	44.2% (36.4-50.9)	46.1% (39.1-52.4)
<b>Two doses, within 0-13 days</b>	37.5% (34.2-40.6)	24.3% (20-28.3)	74.9% (63.6-82.7)	39.0% (-24.9-72.0)
<b>Two doses, 14-59 days</b>	51.0% (49.6-52.4)	26.9% (25.1-28.6)	86.7% (83.8-89.2)	49.9% (30.7-63.7)
<b>Two doses, 60-179 days</b>	36.9% (35.3-38.4)	5.0% (4.2-5.9)	69.8% (67.3-72.1)	62.6% (58.5-66.3)
<b>Two doses, ≥180 days</b>	33.5% (31.7-35.3)	8.1% (7.0-9.1)	57.3% (53.4-60.9)	57.0% (53.5-60.2)
<b>Third dose of CoronaVac, 0-7 days</b>	48.6% (31.3-61.5)	6.1% (-2.9-14.4)	77.5% (61.3-86.9)	60.6% (-16.9-87.1)
<b>Third dose of CoronaVac, 8-59 days</b>	59.8% (53.3-65.3)	15.0% (12.0-18.0)	80.3% (73.7-85.2)	71.3% (60.3-79.2)
<b>Third dose of CoronaVac, ≥60 days</b>	45.5% (18.1-63.7)	0.4% (-2.2-2.9)	65.8% (29.7-83.4)	65.4% (61.5-68.8)
<b>Third dose of BNT162b2, 0-7 days</b>	40.7% (36.3-44.7)	17.3% (15.3-19.3)	76.8% (71.4-81.2)	66.7% (55.8-74.9)
<b>Third dose of BNT162b2, 8-59 days</b>	86.6% (85.9-87.3)	56.8% (56.3-57.4)	91.7% (90.4-92.9)	85.5% (83.8-87.0)
<b>Third dose of BNT162b2, ≥60 days</b>	84.3% (80.9-87.2)	34.9% (34.3-35.6)	88.4% (80.7-93.0)	86.1% (85.0-87.1)

**eTable 2.** Characteristics of adults in Brazil, who were selected into case test negative pairs for the CoronaVac analysis during the Delta period (September 6, 2021 to December 14, 2021) and Omicron period (December 25, 2021 to March 10, 2022), for the analysis of relative vaccine effectiveness

	Matched pairs for Delta period		Matched pairs for Omicron period	
	Controls (n=27,704)^	Cases (n=27,704)^	Controls (n=510,524)^	Cases (n=510,524)^
<b>Demographics</b>				
<b>Age, mean (SD), years</b>	57.0 (20)	57.2 (20)	54.3 (19)	54.5 (19)
<b>Age categories, n (%)</b>				
18-39 years	7741 (27.9)	7422 (26.8)	149738 (29.3)	147758 (28.9)
40-59 years	6103 (22.0)	6333 (22.9)	129224 (25.3)	131565 (25.8)
60-79 years	10199 (36.8)	10163 (36.7)	200118 (39.2)	194568 (38.1)
≥80 years	3661 (13.2)	3786 (13.7)	31444 (6.2)	36633 (7.2)
<b>Male sex, n (%)</b>	10056 (36.3)	10056 (36.3)	175532 (34.4)	175532 (34.4)
<b>Self-reported race<sup>†</sup>, n (%)</b>				
White/Branca	13229 (47.8)	13328 (48.1)	236476 (46.3)	240487 (47.1)
Brown/Pardo	7161 (25.8)	6963 (25.1)	148317 (29.1)	140709 (27.6)
Black/Preta	941 (3.4)	895 (3.2)	18996 (3.7)	17418 (3.4)
Yellow/ Amarela	299 (1.1)	391 (1.4)	7690 (1.5)	7552 (1.5)
Indigenous/Indigena	691 (2.5)	830 (3.0)	2603 (0.5)	1843 (0.4)
Missing	5383 (19.4)	5297 (19.1)	96442 (18.9)	102515 (20.1)
<b>Region of residence</b>				
North	1703 (6.1)	1703 (6.1)	28443 (5.6)	28443 (5.6)
Northeast	4273 (15.4)	4273 (15.4)	83602 (16.4)	83602 (16.4)
Central-West	2501 (9.0)	2501 (9.0)	39844 (7.8)	39844 (7.8)
Southeast	12469 (45.0)	12469 (45.0)	267828 (52.5)	267828 (52.5)
South	6758 (24.4)	6758 (24.4)	90807 (17.8)	90807 (17.8)
<b>Reported number of chronic comorbidities<sup>‡</sup>, n (%)</b>				

None	22587 (81.5)	21636 (78.1)	449137 (88.0)	449834 (88.1)
One or two	4848 (17.5)	5656 (20.4)	59192 (11.6)	58236 (11.4)
Three or more	269 (1.0)	412 (1.5)	2195 (0.4)	2454 (0.5)
<b>Prior SARS-CoV-2 exposure **</b>				
Previous symptomatic events notified to the surveillance systems**, n (%)	8040 (29.0)	5795 (20.9)	137832 (27.0)	125923 (24.7)
Positive SARS-CoV-2 test result <sup>††</sup> , n (%)	1515 (5.5)	497 (1.8)	33785 (6.6)	19578 (3.8)
<b>Interval between symptoms onset and RT-PCR testing, median (p25-p75), days</b>	3 [2, 5]	3 [2, 5]	3 [2, 4]	3 [2, 4]
<b>Hospitalization or Death</b>	2101 (7.6)	4979 (18.0)	13651 (2.7)	21574 (4.2)
<b>Vaccination status</b>				
Two doses, ≥180 days, n (%)	18650 (67.3)	22758 (82.1)	100350 (19.7)	132092 (25.9)
Third dose of CoronaVac, 0-7 days, n (%)	109 (0.4)	95 (0.3)	684 (0.1)	948 (0.2)
Third dose of CoronaVac, 8-59 days, n (%)	492 (1.8)	437 (1.6)	5564 (1.1)	6949 (1.4)
Third dose of CoronaVac, 60-89 days, n (%)	51 (0.2)	72 (0.3)	4515 (0.9)	5592 (1.1)
Third dose of CoronaVac, ≥90 days, n (%)	1 (0.0)	2 (0.0)	13318 (2.6)	17484 (3.4)
Third dose of BNT162b2, 0-7 days, n (%)	1500 (5.4)	1770 (6.4)	11756 (2.3)	14839 (2.9)
Third dose of BNT162b2, 8-59 days, n (%)	6607 (23.8)	2390 (8.6)	93436 (18.3)	61267 (12.0)
Third dose of BNT162b2, 60-89 days, n (%)	290 (1.0)	179 (0.6)	103310 (20.2)	92724 (18.2)
Third dose of BNT162b2, ≥90 days, n (%)	4 (0.0)	1 (0.0)	177591 (34.8)	178629 (35.0)
<b>Interval between second dose and RT-PCR/Antigen test, mean (SD), days</b>	197 [186, 211]	202 [188, 219]	247 [194, 295]	247 [194, 283]
<b>Interval between third dose and RT-PCR/Antigen test, mean (SD), days</b>	20 [10, 35]	10 [6, 29]	87 [56, 105]	91 [64, 107]

**eFigure 3.** Flow chart showing inclusion of cases and controls for the sensitivity analysis including only RT-PCR SARS-CoV-2 tests



**eTable 3.** Characteristics of adults in Brazil, who were selected into case-test negative pairs for the sensitivity analysis including only RT-PCR tests during the Delta period (September 6, 2021 to December 14, 2021) and Omicron period (December 25, 2021 to March 10, 2022)

	Matched pairs for Delta period		Matched pairs for Omicron period	
	Controls (n=69,170 )^	Cases (n=69,170 )^	Controls (n=239,189)^	Cases (n=239,189)^
<b>Demographics</b>				
<b>Age, mean (SD), years</b>	47.2 (20.2)	47.5 (20.3)	42.8 (18.9)	42.9 (19.1)
<b>Age categories, n (%)</b>				
18-39 years	32225 (46.6)	31340 (45.3)	137412 (57.4)	135760 (56.8)
40-59 years	14309 (20.7)	15108 (21.8)	49038 (20.5)	50972 (21.3)
60-79 years	19203 (27.8)	19020 (27.5)	42244 (17.7)	40902 (17.1)
≥80 years	3433 (5.0)	3702 (5.4)	10495 (4.4)	11555 (4.8)
<b>Male sex, n (%)</b>	31506 (45.5)	31506 (45.5)	99816 (41.7)	99816 (41.7)
<b>Self-reported race<sup>†</sup>, n (%)</b>				
White/Branca	28119 (40.7)	29394 (42.5)	102180 (42.7)	106418 (44.5)
Brown/Pardo	23301 (33.7)	21009 (30.4)	73773 (30.8)	65992 (27.6)
Black/Preta	3395 (4.9)	2918 (4.2)	10071 (4.2)	8833 (3.7)
Yellow/ Amarela	948 (1.4)	1191 (1.7)	3536 (1.5)	4094 (1.7)
Indigenous/Indigena	182 (0.3)	277 (0.4)	323 (0.1)	214 (0.1)
Missing	13225 (19.1)	14381 (20.8)	49306 (20.6)	53638 (22.4)
<b>Region of residence</b>				
North	3301 (4.8)	3301 (4.8)	7135 (3.0)	7135 (3.0)
Northeast	10054 (14.5)	10054 (14.5)	40307 (16.9)	40307 (16.9)
Central-West	5594 (8.1)	5594 (8.1)	12789 (5.3)	12789 (5.3)
Southeast	37702 (54.5)	37702 (54.5)	156037 (65.2)	156037 (65.2)
South	12519 (18.1)	12519 (18.1)	22921 (9.6)	22921 (9.6)
<b>Reported number of chronic comorbidities<sup>‡</sup>, n (%)</b>				
None	57554 (83.2)	56330 (81.4)	211062 (88.2)	214878 (89.8)

One or two	10937 (15.8)	11972 (17.3)	26288 (11.0)	22900 (9.6)
Three or more	679 (1.0)	868 (1.3)	1839 (0.8)	1411 (0.6)
<b>Prior SARS-CoV-2 exposure **</b>				
Previous symptomatic events notified to the surveillance systems**, n (%)	17564 (25.4)	11866 (17.2)	71400 (29.9)	63216 (26.4)
Positive SARS-CoV-2 test result <sup>††</sup> , n (%)	3830 (5.5)	1348 (1.9)	19371 (8.1)	13287 (5.6)
<b>Interval between symptoms onset and RT-PCR testing, median (p25-p75), days</b>	3 [2, 5]	3 [2, 5]	3 [2, 5]	3 [2, 4]
<b>Hospitalization or Death</b>	8094 (11.7)	12760 (18.4)	22426 (9.4)	17470 (7.3)
<b>Vaccination status</b>				
Not vaccinated, n (%)	13906 (20.1)	19017 (27.5)	25078 (10.5)	30000 (12.5)
Single dose, within 0-13 days, n (%)	677 (1.0)	941 (1.4)	222 (0.1)	244 (0.1)
Single dose, ≥14 days, n (%)	5853 (8.5)	5868 (8.5)	12439 (5.2)	12483 (5.2)
Two doses, within 0-13 days, n (%)	1877 (2.7)	1641 (2.4)	551 (0.2)	461 (0.2)
Two doses, 14-89 days, n (%)	12803 (18.5)	10572 (15.3)	8426 (3.5)	7858 (3.3)
Two doses, 90-179 days, n (%)	17238 (24.9)	16634 (24.0)	67043 (28.0)	80238 (33.5)
Two doses, ≥180 days, n (%)	11138 (16.1)	12140 (17.6)	24791 (10.4)	28668 (12.0)
Third dose of CoronaVac, 0-7 days, n (%)	66 (0.1)	53 (0.1)	378 (0.2)	297 (0.1)
Third dose of CoronaVac, 8-59 days, n (%)	342 (0.5)	266 (0.4)	1783 (0.7)	1996 (0.8)
Third dose of CoronaVac, ≥60 days, n (%)	40 (0.1)	42 (0.1)	5381 (2.2)	6739 (2.8)
Third dose of BNT162b2, 0-7 days, n (%)	849 (1.2)	810 (1.2)	3018 (1.3)	3154 (1.3)
Third dose of BNT162b2, 8-59 days, n (%)	4148 (6.0)	1110 (1.6)	22978 (9.6)	13160 (5.5)
Third dose of BNT162b2, ≥60 days, n (%)	233 (0.3)	76 (0.1)	67101 (28.1)	53891 (22.5)
<b>Interval between first dose and testing, median (p25-p75), days</b>	36.00 [23.00, 68.00]	35.00 [21.00, 69.00]	141.00 [99.00, 173.00]	144.00 [103.00, 174.00]
<b>Interval between second dose and testing, median (p25-p75), days</b>	145 [60, 181]	151 [73, 187]	141 [120, 178]	141 [121, 178]
<b>Interval between third dose and testing, median (p25-p75), days</b>	21 [11, 37]	10 [6, 28]	86 [54, 103]	90 [62, 106]



**eTable 4.** Effectiveness of CoronaVac and homologous or heterologous booster against symptomatic Covid-19 and Covid-19 hospital admission or deaths in adults in Brazil, from the sensitivity analysis including RT-PCR SARS-CoV-2 tests only

	Cases		Hospitalization or death	
	Delta	Omicron	Delta	Omicron
<b>Not vaccinated</b>	Reference	Reference	Reference	Reference
<b>Single dose, within 0-13 days</b>	-11.6% (-20.5--1.6)	7.1% (-10.6-22.9)	24.8% (-15.5-52.2)	-
<b>Single dose, ≥14 days</b>	26.1% (22.7-29.4)	11.7% (8.9-14.3)	43.9% (34.6-51.8)	39.3% (29.6-47.7)
<b>Two doses, within 0-13 days</b>	36.2% (31.1-40.9)	24.9% (14.7-33.9)	68.6% (50.6-80.0)	52.9% (-20.8-82.4)
<b>Two doses, 14-59 days</b>	48.7% (46.3-51.0)	23.2% (18.7-27.4)	85.7% (81.8-88.8)	58.7% (38.0-72.4)
<b>Two doses, 60-179 days</b>	35.5% (33.1-37.9)	-5.6% (-7.6--3.5)	68.0% (64.9-70.9)	54.5% (48.2-59.9)
<b>Two doses, ≥180 days</b>	29.4% (26.6-32.1)	11.4% (9.1-13.6)	54.3% (49.4-58.7)	49.8% (45.1-54.1)
<b>Third dose of CoronaVac, 0-7 days</b>	51.7% (29.5-66.9)	29.6% (17.6-39.8)	75.2% (57.0-85.7)	26.6% (-68.5-83.0)
<b>Third dose of CoronaVac, 8-59 days</b>	60.7% (52.4-67.6)	6.5% (-0.2-12.7)	77.2% (68.9-83.3)	55.8% (33.9-70.5)
<b>Third dose of CoronaVac, ≥60 days</b>	55.6% (26.4-73.2)	3.5% (-1.3-8.1)	71.9% (39.4-87.0)	55.9% (50.3-60.9)
<b>Third dose of BNT162b2, 0-7 days</b>	42.6% (36.1-48.5)	10.6% (5.6-15.3)	76.4% (69.4-81.8)	67.2% (54.0-76.6)
<b>Third dose of BNT162b2, 8-59 days</b>	85.5% (84.2-86.6)	55.4% (54.1-56.7)	90.2% (88.3-91.8)	81.1% (78.5-83.5)
<b>Third dose of BNT162b2, ≥60 days</b>	84.6% (79.1-88.7)	41.7% (40.4-43.0)	86.8% (76.6-92.6)	80.2% (78.4-81.8)

**eTable 5.** Characteristics of adults in Brazil, who were selected into case-test negative pairs for the sensitivity analysis using RT-PCR SARS-CoV-2 tests only, during the Delta period (September 6, 2021 to December 14, 2021) and Omicron period (December 25, 2021 to March 10, 2022), for the analysis of relative vaccine effectiveness

	Matched pairs for Delta period		Matched pairs for Omicron period	
	Controls (n=13,135) <sup>^</sup>	Cases (n=13,135) <sup>^</sup>	Controls (n=104,705) <sup>^</sup>	Cases (n=104,705) <sup>^</sup>
<b>Demographics</b>				
Age, mean (SD), years	58.46 (20.7)	58.44 (20.7)	54.11 (19.3)	54.25 (19.6)
Age categories, n (%)				
18-39 years	3357 (25.6)	3310 (25.2)	32009 (30.6)	31703 (30.3)
40-59 years	3052 (23.2)	3055 (23.3)	27433 (26.2)	27918 (26.7)
60-79 years	4537 (34.5)	4586 (34.9)	36667 (35.0)	35394 (33.8)
≥80 years	2189 (16.7)	2184 (16.6)	8596 (8.2)	9690 (9.3)
Male sex, n (%)	4812 (36.6)	4812 (36.6)	35772 (34.2)	35772 (34.2)
Self-reported race <sup>†</sup> , n (%)				
White/Branca	6004 (45.7)	6322 (48.1)	47614 (45.5)	49036 (46.8)
Brown/Pardo	3637 (27.7)	3248 (24.7)	30000 (28.7)	25701 (24.5)
Black/Preta	540 (4.1)	451 (3.4)	3993 (3.8)	3567 (3.4)
Yellow/ Amarela	181 (1.4)	243 (1.9)	1639 (1.6)	1752 (1.7)
Indigenous/Indigena	107 (0.8)	137 (1.0)	164 (0.2)	122 (0.1)
Missing	2666 (20.3)	2734 (20.8)	21295 (20.3)	24527 (23.4)
Region of residence				
North	6004 (45.7)	6322 (48.1)	47614 (45.5)	49036 (46.8)
Northeast	3637 (27.7)	3248 (24.7)	30000 (28.7)	25701 (24.5)
Central-West	540 (4.1)	451 (3.4)	3993 (3.8)	3567 (3.4)
Southeast	181 (1.4)	243 (1.9)	1639 (1.6)	1752 (1.7)
South	107 (0.8)	137 (1.0)	164 (0.2)	122 (0.1)
Reported number of chronic comorbidities <sup>‡</sup> , n (%)				

None	10000 (76.1)	9534 (72.6)	85279 (81.4)	87910 (84.0)
One or two	2917 (22.2)	3324 (25.3)	17969 (17.2)	15641 (14.9)
Three or more	218 (1.7)	277 (2.1)	1457 (1.4)	1154 (1.1)
<b>Prior SARS-CoV-2 exposure **</b>				
Previous symptomatic events notified to the surveillance systems**, n (%)	3806 (29.0)	2643 (20.1)	33002 (31.5)	26899 (25.7)
Positive SARS-CoV-2 test result <sup>††</sup> , n (%)	2666 (20.3)	2734 (20.8)	21295 (20.3)	24527 (23.4)
<b>Interval between symptoms onset and RT-PCR testing, median (p25-p75), days</b>	3 [2, 5]	3 [2, 5]	3 [2, 4]	3 [1, 4]
<b>Hospitalization or Death</b>	2096 (16.0)	3389 (25.8)	15010 (14.3)	11831 (11.3)
<b>Vaccination status</b>				
Two doses, ≥180 days, n (%)	9112 (69.4)	10911 (83.1)	21325 (20.4)	27597 (26.4)
Third dose of CoronaVac, 0-7 days, n (%)	65 (0.5)	51 (0.4)	220 (0.2)	281 (0.3)
Third dose of CoronaVac, 8-59 days, n (%)	291 (2.2)	255 (1.9)	1495 (1.4)	1924 (1.8)
Third dose of CoronaVac, 60-89 days, n (%)	31 (0.2)	41 (0.3)	1232 ( 1.2)	1498 ( 1.4)
Third dose of CoronaVac, ≥90 days, n (%)	0 ( 0.0)	2 ( 0.0)	3870 ( 3.7)	5176 ( 4.9)
Third dose of BNT162b2, 0-7 days, n (%)	714 (5.4)	755 (5.7)	1954 (1.9)	2991 (2.9)
Third dose of BNT162b2, 8-59 days, n (%)	2795 (21.3)	1047 (8.0)	18101 (17.3)	12636 (12.1)
Third dose of BNT162b2, 60-89 days, n (%)	127 (1.0)	73 (0.6)	21124 (20.2)	18520 (17.7)
Third dose of BNT162b2, ≥90 days, n (%)	1 ( 0.0)	0 ( 0.0)	35384 (33.8)	34082 (32.6)
<b>Interval between second dose and RT-PCR/Antigen test, mean (SD), days</b>	206 [191, 221]	206 [192, 222]	274 [244, 311]	274 [240, 312]
<b>Interval between third dose and RT-PCR/Antigen test, mean (SD), days</b>	18 [9, 34]	10 [6, 29]	87 [57, 104]	90 [63, 106]

**eTable 6.** Effectiveness of homologous or heterologous booster against symptomatic Covid-19 and Covid-19 hospital admission or deaths in adults stratified by age during Omicron period in Brazil from the sensitivity analysis including RT-PCR SARS-CoV-2 tests only

	Cases			Hospitalization or Death		
	<60 years	60-74 years	≥75 years	<60 years	60-74 years	≥75 years
Not vaccinated	Reference	Reference		Reference	Reference	
Two doses, ≥180 days	2.7% (-0.2-5.6)	33.4% (28.8-37.8)	26.3% (19.6-32.4)	68.7% (61.1-74.9)	56.8% (49.3-63.1)	27.8% (17.7-36.6)
Homologous booster						
Third dose of CoronaVac, 8-59 days	2.0% (-5.5-9.2)	35.1% (22.6-45.5)	-5.3% (-32-24.2)	79.9% (50.4-91.8)	67.0% (41-81.5)	-11.3% (-60.4-49.7)
Third dose of CoronaVac, ≥60 days	-20.5% (-29.1--10.7)	25.0% (17.7-31.6)	9.8% (0.9-17.9)	44.6% (-27.7-77.8)	67.0% (57.9-74.2)	34.0% (23.4-43.1)
Heterologous booster						
Third dose of BNT162b2, 8-59 days	54.0% (52.5-55.4)	63.0% (59.9-65.8)	64.7% (59.9-68.9)	89.9% (86.5-92.5)	83.6% (79.7-86.8)	69.8% (62.8-75.5)
Third dose of BNT162b2, ≥60 days	42.6% (41.1-44.0)	48.2% (44.8-51.3)	43.9% (39.2-48.3)	91.6% (89.4-93.3)	85.6% (83.2-87.7)	67.0% (62.7-70.8)

**eTable 7.** Vaccine effectiveness of homologous and heterologous booster relative to those at least 180 days after the second dose of a primary series of CoronaVac during the Omicron period, from the sensitivity analysis including RT-PCR SARS-CoV-2 tests only

		Cases	Hospitalization or Death
	N	Relative VE (95% CI)	Relative VE (95% CI)
Two doses, ≥180 days	69,568	Reference	Reference
<b>Homologous booster</b>			
Third dose of CoronaVac, 8-59 days	3,980	-1.4% (-8.5-5.9)	13.6% (-23.8-43.2)
Third dose of CoronaVac, 60-79 days	2,860	-3.0% (-10.8-5.2)	23.4% (1.5-40.5)
Third dose of CoronaVac, ≥90 days	9,077	-17.1% (-21.7--12.3)	8.0% (-3.6-18.4)
<b>Heterologous booster</b>			
Third dose of BNT162b2, 8-59 days	35,127	49.1% (47.5-50.6)	58.8% (53.0-63.9)
Third dose of BNT162b2, 60-89 days	40,450	35.1% (33.2-36.9)	66.6% (63.1-69.7)
Third dose of BNT162b2, ≥90 days	69,502	27.9% (26.1-29.7)	56.4% (52.9-59.7)