

## Supplementary information

### Air pollution exposure and diabetes occurrence

Maayan Yitshak Sade, Ph.D., Liuhua Shi, Sc.D., Elena Colicino, Ph.D., Heresh Amini, Ph.D., Joel D Schwartz, Ph.D., Qian Di, Ph.D., and Robert O Wright, MD MPH.

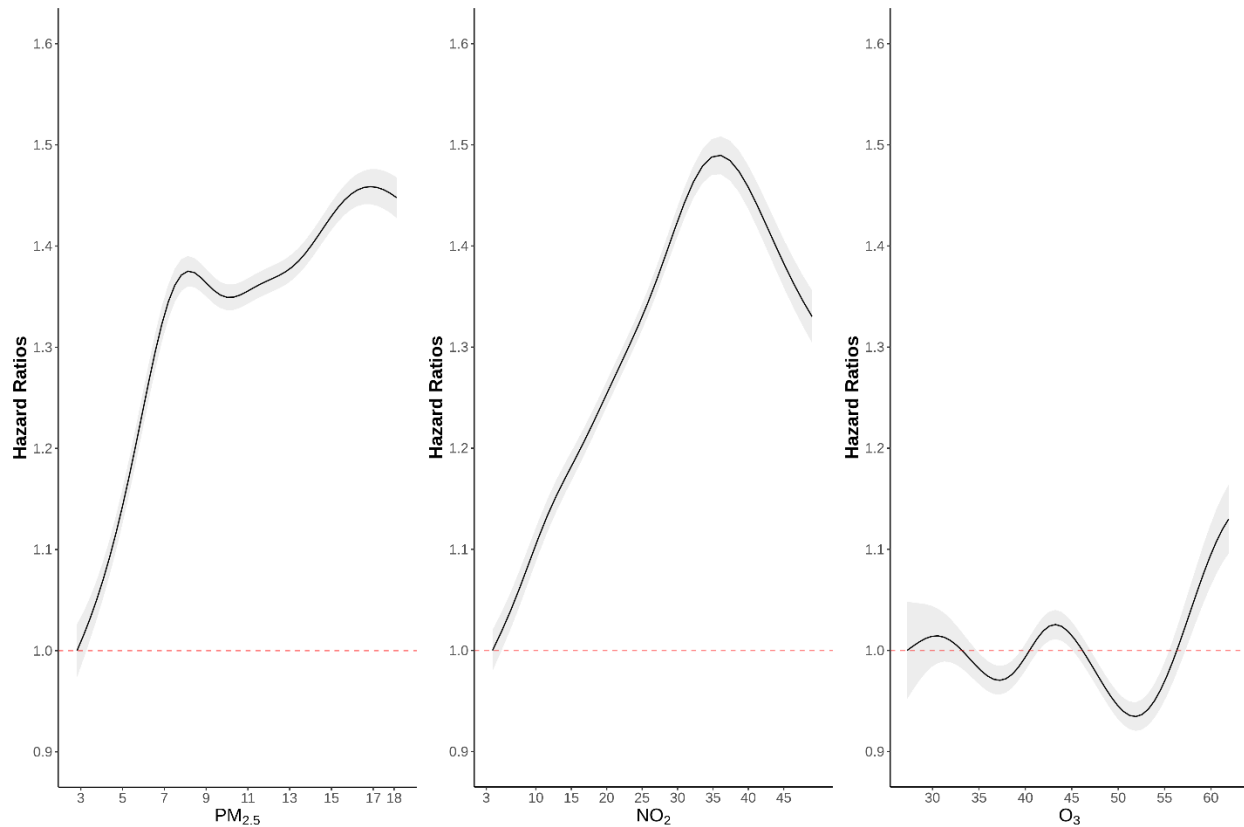
**Supplementary Table 1.** The correlation between the exposures and climate variables.

|                    | PM <sub>2.5</sub> | NO <sub>2</sub> | Ozone | Summer temperature |
|--------------------|-------------------|-----------------|-------|--------------------|
| NO <sub>2</sub>    | 0.44              |                 |       |                    |
| Ozone              | 0.27              | 0.18            |       |                    |
| Summer temperature | 0.1               | -0.04           | 0.23  |                    |
| Winter temperature | -0.04             | -0.04           | -0.07 | 0.62               |

**Supplementary Table 2.** Baseline characteristics of person years by status of enrollment in the fee for service, part A, and part B programs.

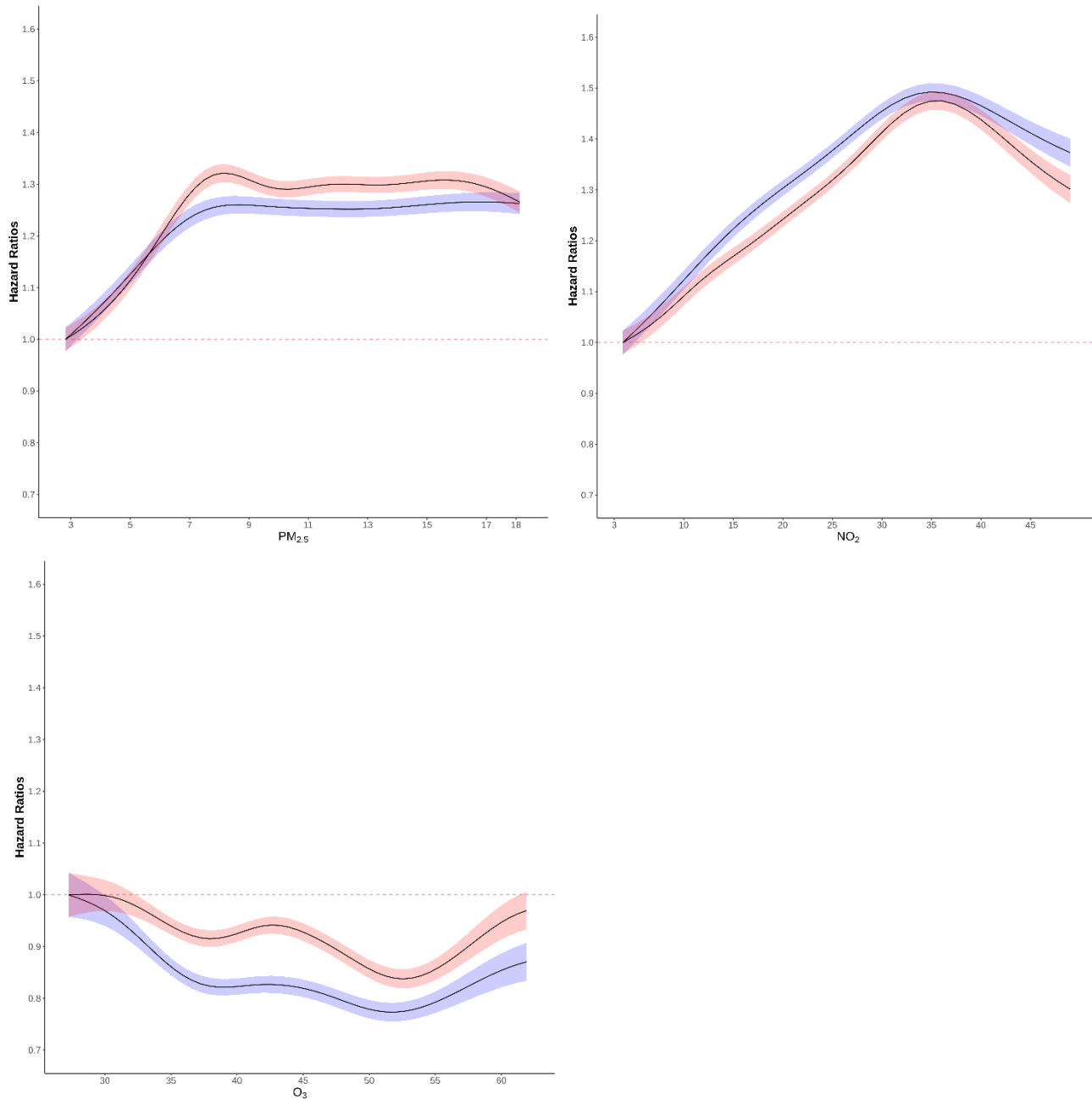
|                          | Included (n=432,826,576 – 61%) | Excluded (n=283,734,324 - 39%) |
|--------------------------|--------------------------------|--------------------------------|
| Age, Mean (Q1; Q3)       | 76 (70; 82)                    | 74 (67; 80)                    |
| Female sex, n (%)        | 254,446,733 (58.7%)            | 156,990,829 (55.3%)            |
| Race, % (n)              |                                |                                |
| White                    | 381,308,542 (88.0%)            | 230,692,691 (81.3%)            |
| Black                    | 29,667,751 (6.8%)              | 26,666,991 (9.3%)              |
| Other                    | 19,535,981 (4.5%)              | 23,060,733 (8.1%)              |
| Missing                  | 2,314,302 (0.7%)               | 3,313,909 (1.3%)               |
| Medicaid eligible, % (n) | 50,792,506 (11.7%)             | 37,428,498 (13.1%)             |
| Death, % (n)             | 214,1710 (0.4%)                | 286,642,86 (10%)               |

**Supplementary Figure 1. The associations between PM<sub>2.5</sub>, NO<sub>2</sub>, O<sub>3</sub> and diabetes: results of single pollutant models.**



This figure shows the exposure-response curves for the associations with PM<sub>2.5</sub>, NO<sub>2</sub>, and warm-months O<sub>3</sub>, from 0.5<sup>th</sup> percentile-99.5<sup>th</sup> percentile of pollutants, i.e., with 1% poorly constrained extreme values excluded. Results are obtained from three single-pollutant models, adjusted for age, race, sex, Medicaid insurance, annual ZIP code means of summer and winter temperature, and annual ZIP code level sociodemographic variables. The model also includes a random intercept for each ZIP code and a spline function of year.

**Supplementary Figure 2.** Comparison of results – the main analysis (red line) versus a sensitivity analysis weighted by the inverse probability of being in the cohort (blue line).



This figure shows the exposure-response curves for the associations with PM<sub>2.5</sub>, NO<sub>2</sub>, and warm-months O<sub>3</sub>, from 0.5<sup>th</sup> percentile-99.5<sup>th</sup> percentile of pollutants, i.e., with 1% poorly constrained extreme values excluded. Results are obtained from a multivariate model, adjusted for age, race, sex, Medicaid insurance, annual ZIP code means of summer and winter temperature, and annual ZIP code level sociodemographic variables. The model also includes a random intercept for each ZIP code and a spline function of year.