

1 **Title:** Plasma cell-free DNA as a prognostic biomarker in small cell lung cancer
2 patients

3

4 **Authors:**

5 Patricia Mondelo-Macía^{1,2}, Jorge García-González^{3,4,5}, Alicia Abalo¹, Manuel
6 Mosquera-Presedo², Rafael López-López^{3,4,5}, Luis León-Mateos^{*3,4,5}, Laura Muínelo-
7 Romay^{*1,5}, and Roberto Díaz-Peña^{*1,6}.

8

9 **Affiliations:**

10 ¹ Liquid Biopsy Analysis Unit, Translational Medical Oncology (Oncomet),
11 Health Research Institute of Santiago (IDIS), Santiago de Compostela, Spain.

12 ² Universidade de Santiago de Compostela (USC), Santiago de Compostela,
13 Spain.

14 ³ Department of Medical Oncology, Complejo Hospitalario Universitario de
15 Santiago de Compostela (SERGAS), Santiago de Compostela, Spain.

16 ⁴ Translational Medical Oncology (Oncomet), Health Research Institute of
17 Santiago (IDIS), Santiago de Compostela, Spain.

18 ⁵ Centro de Investigación Biomédica en Red de Cáncer (CIBERONC), Madrid,
19 Spain.

20 ⁶ Facultad de Ciencias de la Salud, Universidad Autónoma de Chile, Talca, Chile

21

22 *These authors contributed equally to this work.

23

24

25 **Correspondence:**

26 Luis León-Mateos, MD (luis.Angel.Leon.Mateos@sergas.es, ORCID: 0000-0002-0742-
27 1209), Laura Muínelo-Romay, PhD (lmuirom@gmail.com, ORCID: 0000-0002-7456-
28 7531), Roberto Díaz Peña, PhD (roberto.diaz.pena@sergas.es, ORCID: 0000-0002-
29 0114-2292). Address: Complejo Hospitalario Universitario de Santiago de Compostela,
30 Travesía da Choupana s/n; 15706, Santiago de Compostela, Spain

31 **Keywords:** Small cell lung cancer; liquid biopsy; cell free DNA; circulating tumor
32 cells; prognostic biomarkers.

33

34 **ABSTRACT**

35 Background: Lack of biomarkers for treatment selection and monitoring in small-cell
36 lung cancer (SCLC) patients with the limited therapeutic options, result in poor
37 outcomes. Therefore, new prognostic biomarkers are needed to improve their
38 management. The prognostic value of cell-free DNA (cfDNA) and circulating tumor
39 cells (CTCs) have been less explored in SCLC.

40 Methods: We quantified cfDNA in 46 SCLC patients at different times during therapy.
41 Moreover, CTCs were analyzed in 21 patients before therapy onset using CellSearch®
42 system. Both biomarkers were associated with patients' outcomes and a prognostic
43 model was developed.

44 Results: High cfDNA levels before therapy were associated with shorter progression-
45 free survival and overall survival. Furthermore, changes in cfDNA levels between
46 baseline and 3 weeks and cfDNA levels at progression disease were also associated with
47 patients' outcomes. Multivariate analyses confirmed the independence of cfDNA levels
48 as a prognostic biomarker. Finally, the three-risk category prognostic model developed
49 included ECOG Performance Status, gender and baseline cfDNA levels was associated
50 with a higher risk of progression and death.

51 Conclusions: We confirmed the prognostic utility of cfDNA in SCLC patients before
52 and during therapy. Our novel risk prognostic model in clinical practice will allow to
53 identify patients who could benefit with actual therapies.

54

55 INTRODUCTION

56 Small-cell lung cancer (SCLC), which accounts for 15% of all lung cancer cases, is
57 characterized by its aggressiveness, its strong association with tobacco and the poor
58 outcome. About 70% of patients present extensive disease (ED-SCLC) where only 2%
59 survive 5 years after diagnosis (1–3). For many years, chemotherapy was the unique
60 option to treat this tumor type. However, the scenario has changed in the last years (3).
61 New therapies, such as immunotherapy, have been recently incorporated into the
62 management of SCLC patients and, although some survival improvements have been
63 reported in the patients with ED-SCLC (4–8), the majority of them do not benefit from
64 this new treatment (9). The genomic profile of SCLC is characterized by extensive
65 chromosomal rearrangements and a high mutational burden, including in nearly all,
66 inactivation of the tumor suppressor genes *TP53* and *RBI* (10). However, nowadays the
67 selection of treatment in SCLC patients is not dependent on the characteristics of the
68 tumor (11), and the criteria to stratify patients is not clear, since no predictive
69 biomarkers have been validated for the clinical practice (12). In this context, the use of
70 liquid biopsies as a tool to guide treatment and/or for monitoring the patients' response
71 represent a valuable alternative (13).

72 Circulating tumor DNA (ctDNA), derived from tissue tumor cells, has demonstrated its
73 clinical utility and represents a promising tool for guiding precision medicine in several
74 cancer types (14,15). In SCLC, different studies have investigated the importance and
75 the clinical value of analyzing ctDNA levels. However, driver mutations known in
76 SCLC are limited to *RBI* and *TP53* genes (16). In contrast, total cell-free DNA
77 (cfDNA) consists of a heterogeneous and complex DNA fraction released in body fluids
78 by any cell type through cell death mechanisms (17,18). The short half-life of cfDNA

79 enables real-time monitoring for response or relapse, being an easy-to-implement
80 biomarker to monitor cancer evolution and response to therapy (19).

81 Circulating tumor cells (CTCs) are another frequent circulating biomarker investigated
82 in cancer. As a high metastatic tumor type, SCLC is characterized by a strong release of
83 CTCs, with detection rates of 60.2%-94% (16), suggesting that CTCs could be
84 employed as a disease surrogate in SCLC. The analysis of CTCs originated from the
85 primary or metastatic sites (20) as a prognostic biomarker has been reported in different
86 cancer types (21–23) including SCLC. However, the prognostic threshold in SCLC has
87 been not well established (24–28). Despite their different nature, the combined analysis
88 of total cfDNA and CTCs in patients with SCLC could provide complementary
89 information for improving SCLC patients' management.

90 In this study, we hypothesized that total cfDNA levels can serve as a useful biomarker
91 for prognostic and follow-up of SCLC patients under first line of therapy. For this
92 purpose, we analyzed the total cfDNA levels in a cohort of 46 patients with SCLC prior
93 to the start of therapy, at 3 weeks after the first dose, and at the time of progression of
94 the disease. The additional value of CTCs was investigated in our cohort in order to
95 provide a more complete view of the disease dynamics. To our knowledge, this study is
96 the first to examine the possible role of total cfDNA levels as a prognostic and follow-
97 up biomarker in SCLC patients.

98

99 **METHODS**

100 **Patients and blood sample collection**

101 Forty-six patients with new diagnosed SCLC who received first-line treatment between
102 June 2017 and June 2021, at the Department of Medical Oncology of Complejo
103 Hospitalario Universitario de Santiago de Compostela were enrolled in the study. In
104 total 111 blood samples were collected at different time points: before therapy onset
105 (baseline) (n=46), 3 weeks after therapy start (n=40) and at the progression of the
106 disease (n=25). A control cohort of 20 healthy individuals was also included in order to
107 select the better assay to quantify total cfDNA. All individuals signed informed consent
108 forms approved by Santiago de Compostela and Lugo Ethics Committee (Ref:
109 2017/538) prior to enrolling in the study and could withdraw their consent at any time.
110 The study was performed in accordance with the Declaration of Helsinki.

111 **Clinical endpoints**

112 Progression-free survival (PFS) was defined as the time from the date of initial
113 treatment until the date of progression disease, death or last follow-up, whichever
114 occurred first. Progression date was defined as the date of disease progression based on
115 RECIST (v.1.1), or the date of clinical progression if the patient discontinued the
116 treatment due to clinical deterioration despite not meeting criteria for RECIST
117 progression. Overall survival (OS) was defined as the time from the date of initial
118 treatment to the date of death or the last date of follow-up.

119 **Sample processing and cell free DNA isolation**

120 Peripheral blood was obtained by direct venepuncture in CellSave tubes (Menarini,
121 Silicon Biosystems, Bologna, Italy) and processed within 96 hours after blood
122 collection. Plasma and cellular components were separated by centrifugation at 1,600 g
123 for 10 minutes at room temperature. Plasma was centrifugated a second time at 5,500 g

124 for 10 minutes at room temperature in order to remove any remaining cellular debris
125 and aliquoted for storage at -80 °C until the time of cfDNA extraction. cfDNA was
126 isolated from 3 mL of plasma using the QIAamp Circulating Nucleic Acid Kit (Qiagen,
127 Hilden, Germany) using a vacuum pump, according to the manufacturer's instructions
128 and eluted in LoBind[®] tubes (Eppendorf AG, Hamburg, Germany).

129 **Total cell free DNA quantification**

130 CfDNA levels were quantified using two different approaches: Qubit 4 Fluorometer
131 (ThermoFisher Scientific, Waltham, MA, USA) and quantitative PCR (qPCR) method
132 by analyzing the telomerase reverse transcriptase (*hTERT*) single-copy gene (Thermo
133 Fisher Scientific, Waltham, MA, USA).

134 2 µL of the sample were employed to quantify by the fluorometric instrument Qubit 4
135 using the Qubit dsDNA HS Assay Kit (ThermoFisher Scientific, Waltham, MA, USA).

136 In the other hand, samples were quantified by a qPCR assay, described previously (29).
137 Briefly, each qPCR reaction was carried out in a final volume of 20 µL: 10 µL of
138 TaqMan Universal Mastermix (Thermo Fisher Scientific, Waltham, MA, USA), 1 µL of
139 *hTERT* hydrolysis probe and 2 µL of the sample. Each sample was analysed in
140 duplicate. In addition, each plate included a calibration curve and negative controls. The
141 calibration curve calculated based on a dilution series of a commercial standard human
142 genomic DNA (Roche Diagnostics, Mannheim, Germany), was fragmented in 184 bp
143 using Covaris[®] E220 Focused-ultrasonicator (Covaris, Massachusetts, USA) using the
144 following protocol: 430s duration, peak incident power of 175 Watts, duty factor of
145 10% and 200 cycles per burst. Fragments size were then determined using a
146 TapeStation 4700 (Agilent, Santa Clara, CA, USA) and the High Sensitivity DNA
147 ScreenTape[®] (Agilent, Santa Clara, CA, USA). Amplification was performed under the
148 following cycling conditions using a QuantStudio[™] 3 real-time PCR system (Thermo

149 Fisher Scientific, Waltham, MA, USA): 50 °C for 2 min; 95 °C for 10 min; 40 cycles of
150 95 °C 15 s; and 60 °C for 1 min. Data were analyzed with QuantStudio™ Design &
151 Analysis software, version 2.5.1 (Thermo Fisher Scientific, Waltham, MA, USA).

152 The final concentration of each sample was calculated by interpolation of the mean of
153 cycle quantification values (Cq) with the calibration curve. Values with a Cq confidence
154 interval less than 0.95 were discarded. Moreover, only assays with R² values greater
155 than 0.98 for the standard curve and with an efficiency ≥ 88.8% were used. Results
156 obtained from both approaches (Qubit vs *hTERT* qPCR) were compared.

157 **CTC detection and enumeration**

158 Circulating tumor cell analyses were performed using the CellSearch® system
159 (Menarini, Silicon Biosystems, Bologna, Italy). Peripheral whole blood of each patient
160 was collected in CellSave preservative tubes (Menarini, Silicon Biosystems, Bologna,
161 Italy), stored at room temperature and processed within 96 hours after the blood was
162 drawn.

163 Briefly, 7.5mL of whole blood were mixed with 6mL of buffer and centrifugated at 800
164 g for 10 minutes at room temperature. Next, samples were processed in the CellTracks
165 Autoprep system using the Circulating Tumor Cell Kit (Menarini, Silicon Biosystems,
166 Bologna, Italy). The kit consists of ferrofluids coated with epithelial cell-specific anti-
167 EpCAM antibodies to immunomagnetically enrich epithelial cells; a mixture of
168 antibodies directed to cytokeratins (CKs) 8, 18, and 19 conjugated to phycoerythrin
169 (PE); an antibody to CD45 conjugated to allophycocyanin (APC); nuclear dye 4',6-
170 diamidino-2-phenylindole (DAPI) to fluorescently label the cells as well as buffers to
171 fix, permeabilize, wash and resuspend the cells. Finally, samples were analyzed with the
172 CellTracks Analyzer II according to the manufacturer's instructions. The CTCs were

173 identified as round or oval cells with an intact nucleus (DAPI⁺), CK positive and CD45
174 negative.

175 **Statistical analysis**

176 Continuous data were summarized as mean, median and range whereas frequency and
177 percentage were presented for categorical variables. Categorical variables were
178 compared using the chi-square test or Fisher's exact test. Swimmer plot was provided to
179 visualize the times of sample collection, every patient's therapy and clinical outcomes.
180 Pearson test was used to evaluate a pairwise correlation between the different strategies
181 to quantify the cfDNA, by fluorometry and qPCR. The Mann–Whitney–Wilcoxon U-
182 Test was used to compare continuous variables between groups. Receiver operating
183 characteristics (ROC) curves were computed based on cfDNA levels of SCLC patients
184 and healthy controls, representing the area under the curve (AUC) values and
185 computing the confidence intervals (CI) at 95% confidence levels. ROC curves were
186 also constructed to evaluate the thresholds of baseline cfDNA levels for PFS and OS
187 analyses. Kaplan-Meier method was used to plot the survival curves applying the log-
188 rank test. Univariate and multivariate Cox regression analyses were used to evaluate
189 factors independently associated with PFS and OS. A final prognostic model for PFS
190 and OS was developed. Comparisons of Cox proportional hazard regression models
191 were made using the Akaike information criterion (AIC) technique (30), with a smaller
192 AIC value indicating the better model. All statistical analyses were performed using R
193 version 4.1.1. The following R packages were used: survival (31), survminer, ggplot2
194 (32), pROC (33), gtsummary (34), swimplot, stats, rstatix.

195

196

197

198 **RESULTS**

199 **Patient characteristics and sample collection**

200 Forty-six SCLC patients were included in the study. Their clinicopathological
201 characteristics are presented in Table 1. The median age was 67 (range 47-83) years, all
202 the patients were current or former smokers, and most were males (84.78%) and stage
203 IV tumors (89.13%). The Eastern Cooperative Oncology Group Performance Status
204 (ECOG PS) <2 accounted for 67.39% of cases and 52.17% of patients had a number of
205 metastases ≥ 2 . The median number of chemotherapy or chemotherapy/immunotherapy
206 treatment cycles was 5 (range 1–11). At the time of analysis, 41 of the 46 (89.13%)
207 evaluable patients had experienced disease progression and 38 of the 46 (82.6%)
208 evaluable patients had died. Sample collection was performed before therapy onset, 3
209 weeks after initiation of therapy and at the time of progression disease (Figure 1).
210 Median PFS and OS were 174 (range 4-483) and 229 (range 4-748) days, respectively.

211 **CfDNA levels are specifically increased in SCLC patients**

212 In order to determine the better method to quantify the total cfDNA in patients with
213 SCLC, we compared the Qubit 4 Fluorometer (ThermoFisher Scientific, Waltham, MA,
214 USA) versus the qPCR method by analyzing the *hTERT* single-copy gene (Thermo
215 Fisher Scientific, Waltham, MA, USA). A good correlation between both approaches at
216 different times of therapy (baseline, 3 weeks, and progression disease) was found (R^2
217 =0.959) (Figure 2A). In addition, 20 healthy controls were included in order to compare
218 their cfDNA levels with our patient cohort using both approaches. Total cfDNA levels
219 in healthy controls were statistically lower than in those found in the SCLC cohort
220 (Wilcoxon test $p=1.2 \times 10^{-08}$ and $p=1.5 \times 10^{-11}$, using both fluorometer method and qPCR
221 assay, respectively) (Figure 2B-C). Our qPCR assay showed an AUC=0.95 (specificity
222 95% and sensibility 85%) whereas the fluorometer method presented an AUC=0.94

223 (specificity 100% and sensibility 80%) (Figure 2D-E). These results evidenced that
224 cfDNA levels were increased as a result of the malignant disease in SCLC patients and
225 reinforced their interest as a potential biomarker to follow-up the disease evolution. In
226 addition, the PCR-based strategy was prioritized to quantify the cfDNA since this
227 method appears as a more robust option than fluorometric quantification.

228 **Clinical interest of cfDNA analysis at baseline**

229 Total cfDNA was quantified by qPCR assay at different time points in our patient
230 cohort with the goal to evaluate its potential as a monitoring tool (Supplementary Table
231 1). CfDNA levels at baseline were significantly higher in patients with stage IV cancer,
232 poor performance status, an elevated number of sites of metastasis and presence of liver
233 metastases ($P \text{ value} \leq 0.05$) (Table 1). There was no statistically significant association
234 with respect to age, gender, smoking status, presence of bone metastasis, presence of
235 lymph node metastases and the treatment used.

236 In addition, the possible role of cfDNA as a prognostic biomarker before therapy in
237 SCLC was investigated. Thus, the cfDNA levels were log-transformed and the patients
238 were dichotomized into high and low cfDNA level groups based on ROC analysis
239 (Supplementary Table 2). The thresholds of baseline log cfDNA levels were chosen at
240 7.650 (~2100.65 copies in hG/mL plasma) and 8.077 (~3219.56 copies in hG/mL
241 plasma) for PFS and OS analyses, respectively. We found that patients with high levels
242 of total cfDNA at baseline presented shorter PFS (long rank $p=0.0005$, hazard ratio,
243 5.06; 95% CI 1.89–13.6) and OS (long rank $p=0.0005$, hazard ratio, 3.32; 95% CI 1.50-
244 7.37) than those with low levels of total cfDNA (Figure 3A-B). The median PFS of
245 patients in the low baseline cfDNA group was 350 days versus 156 days in the high
246 baseline cfDNA group, whereas the median OS was 426 and 210 days in the two
247 respective groups (low vs high baseline total cfDNA levels). Univariate and

248 multivariate Cox regression analyses of PFS and OS were performed considering
249 various clinical and demographic variables (ECOG PS, sex, age, stage, number of
250 metastases, presence of liver metastasis and smoking status) (Table 2). Multivariate
251 regression analyses confirmed the value of the cfDNA levels at baseline as an early
252 independent predictor biomarker for PFS and OS (hazard ratio, 46.0; 95% CI, 3.16-672;
253 p -value =0.005 and hazard ratio, 32.4; 95% CI, 3.05-344; p -value =0.004, respectively).

254 **Longitudinal analysis of total cfDNA levels during therapy**

255 To determine whether cfDNA levels can be employed to monitor patients' evolution
256 during therapy, we quantified longitudinal cfDNA levels at 3 weeks after initiation of
257 treatment (n=40) and at progression disease (n=25). We found that levels of total
258 cfDNA were significantly higher before therapy than at 3 weeks after therapy onset
259 (Wilcoxon test p = 0.002; Supplementary Figure 1), suggesting clearance of ctDNA
260 after therapy start which impact on cfDNA levels. However, no significant differences
261 between cfDNA levels at baseline and at progression disease were found
262 (Supplementary Figure 1).

263 To analyze the possible prognostic role of cfDNA monitoring during therapy, cfDNA
264 levels were also log-transformed and the patients were dichotomized into high and low
265 cfDNA level groups based on ROC analysis (Supplementary Table 2) in each sample
266 time. Thus, the possible prognostic role of monitoring cfDNA levels at 3 weeks after
267 initiation of treatment was investigated. We divided our cohort into groups after
268 considering their changes in cfDNA levels: Favorable group (patients with low cfDNA
269 levels at baseline and at 3 weeks + patients with high cfDNA levels at baseline but low
270 levels at 3 weeks; n=18) and unfavorable group (patients with low cfDNA levels at
271 baseline but high cfDNA levels at 3 weeks + patients with high cfDNA at baseline and
272 at 3 weeks; n=22). Patients for the unfavorable group showed a shorter PFS (long rank

273 $p < 0.0005$, hazard ratio, 3.5; 95% CI 1.69-7.23) and OS (long rank $p < 0.0005$ hazard
274 ratio, 3.67; 95% CI 1.72-7.82) (Figure 3C-D) than the favorable group. Multivariate
275 regression analyses confirm the independence of the cfDNA changes between baseline
276 and 3 weeks as a prognostic biomarker of PFS and OS (hazard ratio, 3.49.0; 95% CI,
277 1.50-8.12; p -value =0.004 and hazard ratio, 4.35; 95% CI, 1.68-11.3; p -value =0.002,
278 respectively) (Table 2).

279 Finally, cfDNA quantification at the time of progression disease was performed in 25
280 SCLC patients. Our results reported that patients with high cfDNA levels at this time
281 point survive fewer days than patients with low cfDNA levels (long rank $p < 0.0001$,
282 hazard ratio, 15.2; 95% CI 3.28-70.7; 426 days in the high cfDNA levels group versus
283 214 days in the low cfDNA levels group) (Figure 3E).

284 **Circulating tumor cells analyses and prognostic value**

285 CTCs analyses were performed in 21 patients with SCLC before starting the treatment.
286 85.71% of patients (18 of 21 patients) presented at least 1 CTC with a median of 26
287 CTCs (range 0 – 4796) (Supplementary Figure 2A-B). CTCs number at baseline was
288 significantly higher in patients with extensive disease (stage IV) and with poor
289 performance status (Supplementary Figure 3A-J). Also, the presence of CTCs and high
290 cfDNA levels were significantly associated (Supplementary Figure 3K), indicating that
291 both markers are reflecting the tumor burden.

292 In another hand, different cut-offs were analyzed in order to determine the possible
293 prognostic value of CTCs (Supplementary Table 3). We found that the presence of ≥ 150
294 CTCs/7.5mL of blood was significantly associated with shorter PFS rates (long rank
295 $p = 0.02$, hazard ratio, 4.66; 95% CI 1.11-19.6) in our cohort (Supplementary Table 3;
296 Supplementary Figure 2C). In multivariate analysis CTCs did not show value as an
297 independent predictive biomarker of PFS and OS.

298 **Prognostic model for PFS and OS**

299 An independent prognostic model for both PFS and OS was developed. Three variables
300 were retained in the final prognostic model: cfDNA levels (high vs. low levels), ECOG
301 PS (<2 vs. ≥ 2) and sex (male vs. female). The detailed results of the multivariate
302 analyses are shown in Figure 4A. Subsequently, we segregated patients into three risk
303 categories: patients with all adverse prognostic factors were classified in the poor-risk
304 category (high cfDNA levels, ECOG PS ≥ 2 and male gender), patients with two adverse
305 prognostic factors were classified in the intermediate-risk category, and patients with
306 one or none adverse prognostic factor were classified in the favorable-risk category. The
307 Kaplan–Meier curves representing the three risk categories and median PFS and OS are
308 presented in Figure 4B-C. Median PFS ranged from 124 to 289 days based on the
309 number of adverse prognostic factors present before therapy. Median OS ranged from
310 115 to 514 days.

311 Going up from a lower category (favorable) to upper categories (intermediate and poor),
312 the progression model quintuples the risk of disease recurrence (HR= 5.37, 95% CI,
313 2.32-12.4; p-value= 3×10^{-5}) and six folds the risk of death (HR= 6.02, 95% CI, 2.66-
314 13.6; p-value= 3×10^{-6}) (Supplementary Table 4).

315

316 **DISCUSSION**

317 Precision medicine has the objective of optimizing the selection of the best therapy for
318 each patient. In this context, liquid biopsy has emerged as a promising and minimally
319 invasive tool for this due to its ability to provide a total image of primary and metastatic
320 tumors at different times across therapy (35). Recently, the management of SCLC has
321 changed and new therapies, such as immunotherapy among others, are being investigated
322 and approved for clinical use (16,36,37). Nevertheless, the necessity to find a prognostic

323 biomarker for helping to select the therapy prescribed and to monitor the evolution of
324 the disease during the treatment, remains a challenge in SCLC patients. In this study, we
325 report for the first time the possibility to employ the cfDNA and its quantification as a
326 prognostic biomarker in SCLC prior to starting therapy and at different time points. Our
327 analyses allow us to identify a group of low-risk patients characterized by low cfDNA
328 levels at baseline who probably will benefit from both: chemotherapy in monotherapy
329 or the combination of immunotherapy and chemotherapy. The study of another common
330 circulating biomarker, CTCs, also provided us information for the prognostic of patients
331 before starting therapy, although the results were less clear. We found a significant
332 association between presence of a high number of CTCs (≥ 150 CTCs) and worse PFS.
333 Total cfDNA refers to a heterogeneous and complex DNA fraction free released in body
334 fluids by any cell type (not only tumoral) through several cell death mechanisms such as
335 secretion, apoptosis and necrosis (17,18). In line with our results, it's well reported that
336 cancer patients present higher cfDNA levels than healthy controls (38,39) but few
337 studies have investigated the possible prognostic and predictive value of total cfDNA
338 quantification in patients with SCLC. In contrast, the ctDNA, the tumor-derived fraction
339 of this cfDNA, has been reported as a prognostic and predictive biomarker in several
340 works (40–44). Almodovar et al. reported that changes in the mutant allele frequencies
341 on ctDNA were associated with response to treatment and relapse. Twenty-seven
342 patients with SCLC were analysed by next-generation sequencing (NGS) custom panel,
343 however, the lack of driver mutations known in SCLC, limited the number of genes
344 analyzed (40). In another work, Devarakonda et al analyzed 564 patients using a larger
345 NGS panel, including 73 genes, and, according to previous results into the bibliography,
346 *RBI* and *TP53* were the most frequent mutant, however, any prognostic or predictive
347 value was reported in this study.

348 In this way, total cfDNA quantification allows to detect the total DNA released from
349 normal and also tumor cells into the blood. Thus, despite the few known driver
350 mutations found in SCLC, cfDNA quantification allows to quantify the total levels
351 before treatment and monitor the changes during therapy. Recently, our group
352 demonstrated the feasibility to quantify cfDNA levels in non-small cell lung cancer
353 patients and its association with patients' outcomes (45), suggesting its possible utility
354 in SCLC.

355 Thus, in the present work, we quantified total cfDNA levels using two different
356 technologies, a fluorometric assay Qubit and a more specific assay, the qPCR assay
357 analyzing the *hTERT* gene. CfDNA levels quantified by both technologies showed good
358 concordance. Furthermore, the concordance of cfDNA levels at any time point of
359 therapy using both methods also showed a good concordance. Therefore, both methods
360 could be used to robustly measure the cfDNA content. However, to complete our study
361 we chose the qPCR assay, which is a high sensitive and specific assay for cfDNA
362 quantification in SCLC patients, and was previously employed in studies focused on
363 non-small cell lung cancer (45–48).

364 Regarding the clinical meaning of cfDNA content, we found that high levels were
365 significantly associated with shorter PFS and OS before therapy onset, being a robust
366 independent prognostic biomarker in newly diagnosed SCLC patients. Also, cfDNA
367 levels at baseline were higher in patients with stage IV that could be a consequence of
368 more aggressive disease. This can be partially explained by an increase of ctDNA levels
369 released from the tumor cells to the bloodstream, increasing the total cfDNA fraction.
370 Moreover, analyses showed that changes of cfDNA levels between baseline and 3
371 weeks are associated with patients' outcomes, being those patients with high values in
372 both sample points, the ones with the worst prognosis. In addition, high cfDNA levels at

373 the time of disease recurrence were associated with a higher risk of death. Of note,
374 multivariate analyses showed the independence of cfDNA levels at 3 weeks and at
375 progression disease as a prognostic biomarker. These results suggest that cfDNA
376 monitoring could provide valuable information for the management of SCLC as our
377 group previously reported in non-small cell lung cancer (NSCLC) (29). Thus, in
378 clinical practice, in those SCLC patients with high levels of cfDNA at the time of
379 disease recurrence, the selection of a more aggressive therapy or the intensification of
380 clinical visits would be considered.

381 Besides cfDNA levels, we investigated the prognostic value of additional biomarkers
382 such as CTCs and clinical characteristics. CTCs were analyzed in a cohort of 21 SCLC
383 patients using the CellSearch® system, the only Food and Drug Administration (FDA)-
384 approved device for CTC enumeration in prostate, breast and colorectal cancer.
385 According to previous studies (16), a detection rate of 85.71% was found in our study.
386 Moreover, the CTC count at baseline determined using the CellSearch® system was
387 significantly associated with PFS and OS (24,27,28,49,50). For example, Naito et al.
388 reported that the presence of ≥ 8 CTCs/7.5mL of blood was associated with worse OS
389 (24), however, another study employed 50 CTCs as cut-off for PFS and OS (28). In fact,
390 a consensus regarding the optimal cut-off of CTCs and the prognostic value remains a
391 challenge (16). In this work, we found a discrete association between the presence of
392 ≥ 150 CTCs and a shorter PFS, however multivariate analyses did not show independent
393 value for the CTC count. Interestingly, high cfDNA levels and the presence of CTCs at
394 baseline were significantly associated, reporting the clear association between both
395 circulating biomarkers. CTCs release in the bloodstream is related to the intravasation
396 process of potentially metastatic cancer cells. Nevertheless, cfDNA is released by any
397 cell type including tumoral and normal cells, however, how cfDNA release relates to

398 tumor biology is currently unknown. Finally, we evaluate several factors that could
399 influence the patients' outcomes. Thus, we proposed a simple model to segregate
400 patients into three categories based on risk of progression and death (taking into account
401 the cfDNA levels, ECOG and gender of patients). We found that patients with one or
402 less adverse prognostic factors were classified in the favorable-risk category and present
403 a longer PFS and OS. Thinking about the clinical relevance of these results, some
404 limitations in our design should be considered. First, the sample size of our CTC cohort
405 was relatively small and CTC monitoring during therapy could provide more valuable
406 information. Finally, a validation study of our prognostic model in a larger cohort of
407 patients can arise more robust conclusions.

408 In conclusion, we describe an important potential role of cfDNA levels as a prognostic
409 biomarker in newly diagnosed SCLC patients and also could provide useful information
410 about disease evolution. In addition, a prognostic model employing cfDNA levels and
411 some clinical characteristics (ECOG and gender) allow us to stratify patients and detect
412 those who particularly could benefit from treatment.

413

414

415 **Acknowledgments**

416 This project never could be possible without the kindly collaboration of all patients.

417 **Author's contributions**

418 All authors agreed to submit this manuscript. L.L-M., L.M-R., R.L-L and R.D-P.
419 designed and supervised the project. M.M-P., J.G-G. and L.L-M. contributed clinical
420 samples and patient characteristics. P.M-M and A.A performed experiments. P.M-M.
421 and R.D-P analyzed the data. P.M-M. and R.D-P prepared the manuscript. L.M-R. and
422 L.L-M supervised the manuscript. All the authors read and approved the final
423 manuscript.

424 **Ethics approval and consent to participate**

425 The present study was approved by the ethic committee of Santiago de Compostela and
426 Lugo Ethics Committee (Ref: 2017/538). Written informed content was obtained from
427 every participant prior to enrolling in the study and could withdraw their consent at any
428 time. The study was performed in accordance with the Declaration of Helsinki.

429 **Consent for publication**

430 Not applicable.

431 **Data availability**

432 The data that support the findings of this study are available from the corresponding
433 author upon reasonable request.

434 **Competing interest**

435 Jorge García-González reports personal fees from AstraZeneca, Boehringer-Ingelheim,
436 Novartis, Pierre Fabre, Rovi and Sanofi; and personal fees and non-financial support
437 from Bristol-Myers Squibb, Lilly, MSD and Roche, outside the submitted work. Luis
438 León-Mateos reports personal fees from AstraZeneca, Boehringer-Ingelheim, Novartis,

439 Jansen, Astellas and Sanofi; and personal fees and non-financial support from Bristol-
440 Myers Squibb, Lilly, MSD and Roche, outside the submitted work. Rafael López-López
441 reports grants and personal fees from Roche, Merck, AstraZeneca, Bayer, Pharmamar,
442 Leo, and personal fees and non-financial support from Bristol-Myers Squibb and
443 Novartis, outside of the submitted work. The other authors declare no competing
444 interests.

445 **Funding information**

446 This study was financed by all the donors who participated in the Liquid Biopsy
447 Crowdfunding campaign in 2017. LMR is funded by a contract “Miguel Servet” from
448 ISCIII (CP20/00120). RDP is funded by a contract “Miguel Servet” from ISCIII
449 (CP21/00003).

450

451 **References**

- 452 1. Rudin CM, Brambilla E, Faivre-Finn C, Sage J. Small-cell lung cancer. *Nat Rev*
453 *Dis Prim.* 2021 Dec 14;7(1):3.
- 454 2. Thai AA, Solomon BJ, Sequist L V., Gainor JF, Heist RS. Lung cancer. *Lancet.*
455 2021;398(10299):535–54.
- 456 3. Gazdar AF, Bunn PA, Minna JD. Small-cell lung cancer: What we know, what
457 we need to know and the path forward. *Nat Rev Cancer.* 2017;17(12):725–37.
- 458 4. Esposito G, Palumbo G, Carillio G, Manzo A, Montanino A, Sforza V, et al.
459 Immunotherapy in Small Cell Lung Cancer. *Cancers (Basel).* 2020 Sep 4 [cited
460 2020 Oct 15];12(9):2522.
- 461 5. Facchinetti F, Di Maio M, Tiseo M. Adding PD-1/PD-L1 inhibitors to
462 chemotherapy for the first-line treatment of extensive stage small cell lung cancer
463 (Sclc): A meta-analysis of randomized trials. Vol. 12, *Cancers.* MDPI AG; 2020.
464 p. 1–18.
- 465 6. Horn L, Mansfield AS, Szczęśna A, Havel L, Krzakowski M, Hochmair MJ, et
466 al. First-Line Atezolizumab plus Chemotherapy in Extensive-Stage Small-Cell
467 Lung Cancer. *N Engl J Med.* 2018 Dec;379(23):2220–9.
- 468 7. Paz-Ares L, Dvorkin M, Chen Y, Reinmuth N, Hotta K, Trukhin D, et al.
469 Durvalumab plus platinum–etoposide versus platinum–etoposide in first-line
470 treatment of extensive-stage small-cell lung cancer (CASPIAN): a randomised,
471 controlled, open-label, phase 3 trial. *Lancet [Internet].* 2019 Nov
472 23;394(10212):1929–39.
- 473 8. Rudin CM, Awad MM, Navarro A, Gottfried M, Peters S, Csőszi T, et al.
474 Pembrolizumab or Placebo Plus Etoposide and Platinum as First-Line Therapy
475 for Extensive-Stage Small-Cell Lung Cancer: Randomized, Double-Blind, Phase

- 476 III KEYNOTE-604 Study. *J Clin Oncol*. 2020 Jul 20;38(21):2369–79.
- 477 9. Dumoulin DW, Dingemans AMC, Aerts JGJV, Remon J, de Ruyscher DKM,
478 Hendriks LEL. Immunotherapy in small cell lung cancer: One step at a time: A
479 narrative review. *Transl Lung Cancer Res*. 2021;10(6):2970–87.
- 480 10. George J, Lim JS, Jang SJ, Cun Y, Ozretić L, Kong G, et al. Comprehensive
481 genomic profiles of small cell lung cancer. *Nature*. 2015 Aug;524(7563):47–53.
- 482 11. Kalemkerian GP, Loo BW, Akerley W, Attia A, Bassetti M, Bumber Y, et al.
483 NCCN guidelines® insights: Small cell lung cancer, version 2.2018 featured
484 updates to the NCCN guidelines. *JNCCN J Natl Compr Cancer Netw*.
485 2018;16(10):1171–82.
- 486 12. Ortega-Franco A, Ackermann C, Paz-Ares L, Califano R. First-line immune
487 checkpoint inhibitors for extensive stage small-cell lung cancer: clinical
488 developments and future directions. *ESMO Open*. 2021;6(1):100003.
- 489 13. Blackhall F, Frese KK, Simpson K, Kilgour E, Brady G, Dive C. Will liquid
490 biopsies improve outcomes for patients with small-cell lung cancer? *Lancet*
491 *Oncol*. 2018 Sep 1;19(9):e470–81.
- 492 14. Cheng ML, Pectasides E, Hanna GJ, Parsons HA, Choudhury AD, Oxnard GR.
493 Circulating tumor DNA in advanced solid tumors: Clinical relevance and future
494 directions. *CA Cancer J Clin*. 2021;71(2):176–90.
- 495 15. Bettgowda C, Sausen M, Leary RJ, Kinde I, Wang Y, Agrawal N, et al.
496 Detection of circulating tumor DNA in early- and late-stage human malignancies.
497 *Sci Transl Med*. 2014 Feb;6(224):224ra24.
- 498 16. Mondelo-Macía P, García-González J, León-Mateos L, Castillo-García A, López-
499 López R, Muínelo-Romay L, et al. Current status and future perspectives of
500 liquid biopsy in small cell lung cancer. *Biomedicines*. 2021;9(1):1–22.

- 501 17. Keller L, Belloum Y, Wikman H, Pantel K. Clinical relevance of blood-based
502 ctDNA analysis: mutation detection and beyond. *Br J Cancer*. 2020.
- 503 18. Aucamp J, Bronkhorst AJ, Badenhorst CPS, Pretorius PJ. The diverse origins of
504 circulating cell-free DNA in the human body: a critical re-evaluation of the
505 literature. *Biol Rev*. 2018;93(3):1649–83.
- 506 19. Kustanovich A, Schwartz R, Peretz T, Grinshpun A. Life and death of circulating
507 cell-free DNA. *Cancer Biol Ther*. 2019;20(8):1057–67.
- 508 20. Pantel K, Speicher MR. The biology of circulating tumor cells. *Oncogene*.
509 2016;35(10):1216–24.
- 510 21. Cristofanilli M, Budd GT, Ellis MJ, Stopeck A, Matera J, Miller MC, et al.
511 Circulating tumor cells, disease progression, and survival in metastatic breast
512 cancer. *N Engl J Med*. 2004;351(8):781–91.
- 513 22. Cohen SJ, Punt CJA, Iannotti N, Saidman BH, Sabbath KD, Gabrail NY, et al.
514 Relationship of circulating tumor cells to tumor response, progression-free
515 survival, and overall survival in patients with metastatic colorectal cancer. *J Clin*
516 *Oncol Off J Am Soc Clin Oncol*. 2008 Jul;26(19):3213–21.
- 517 23. de Bono JS, Scher HI, Montgomery RB, Parker C, Miller MC, Tissing H, et al.
518 Circulating tumor cells predict survival benefit from treatment in metastatic
519 castration-resistant prostate cancer. *Clin cancer Res an Off J Am Assoc Cancer*
520 *Res*. 2008 Oct;14(19):6302–9.
- 521 24. Naito T, Tanaka F, Ono A, Yoneda K, Takahashi T, Murakami H, et al.
522 Prognostic impact of circulating tumor cells in patients with small cell lung
523 cancer. *J Thorac Oncol*. 2012;7(3):512–9.
- 524 25. Igawa S, Gohda K, Fukui T, Ryuge S, Otani S, Masago A, et al. Circulating
525 tumor cells as a prognostic factor in patients with small cell lung cancer. *Oncol*

- 526 Lett. 2014 May;7(5):1469–73.
- 527 26. Cheng Y, Liu XQ, Fan Y, Liu YP, Liu Y, Liu Y, et al. Circulating tumor cell
528 counts/change for outcome prediction in patients with extensive-stage small-cell
529 lung cancer. *Futur Oncol.* 2016;12(6):789–99.
- 530 27. Salgia R, Weaver RW, McCleod M, Stille JR, Yan SB, Roberson S, et al.
531 Prognostic and predictive value of circulating tumor cells and CXCR4 expression
532 as biomarkers for a CXCR4 peptide antagonist in combination with carboplatin-
533 etoposide in small cell lung cancer: exploratory analysis of a phase II study.
534 *Invest New Drugs.* 2017;35(3):334–44.
- 535 28. Aggarwal C, Wang X, Ranganathan A, Torigian D, Troxel A, Evans T, et al.
536 Circulating tumor cells as a predictive biomarker in patients with small cell lung
537 cancer undergoing chemotherapy. *Lung Cancer.* 2017 Oct;112:118–25.
- 538 29. Mondelo-Macía P, García-González J, León-Mateos L, Anido U, Aguin S,
539 Abdulkader I, et al. Clinical potential of circulating free DNA and circulating
540 tumour cells in patients with metastatic non-small-cell lung cancer treated with
541 pembrolizumab. *Mol Oncol.* 2021;15(11):2923–40.
- 542 30. Akaike H. A New Look at the Statistical Model Identification. In 1974. p. 215–
543 22.
- 544 31. Therneau TM, Grambsch PM. *Modeling Survival Data: Extending the Cox*
545 *Model.* New York: Springer; 2000.
- 546 32. Hadley W. *Ggplot2: Elegant graphics for data analysis.* Springer; 2016.
- 547 33. Robin X, Turck N, Hainard A, Tiberti N, Lisacek F, Sanchez J-C, et al. pROC:
548 an open-source package for R and S+ to analyze and compare ROC curves. *BMC*
549 *Bioinformatics.* 2011 Dec 17;12(1):77.
- 550 34. Sjoberg, Daniel D, Whiting K, Curry M, Lavery, Jessica A, Larmarange J.

- 551 Reproducible Summary Tables with the gtsummary Package. R J.
552 2021;13(1):570.
- 553 35. Oliveira KCS, Ramos IB, Silva JMC, Barra WF, Riggins GJ, Palande V, et al.
554 Current Perspectives on Circulating Tumor DNA, Precision Medicine, and
555 Personalized Clinical Management of Cancer. Mol Cancer Res. 2020
556 Apr;18(4):517–28.
- 557 36. Schwendenwein A, Megyesfalvi Z, Barany N, Valko Z, Bugyik E, Lang C, et al.
558 Molecular profiles of small cell lung cancer subtypes: therapeutic implications.
559 Mol Ther - Oncolytics. 2021;20(March):470–83.
- 560 37. Yang S, Zhang Z, Wang Q. Emerging therapies for small cell lung cancer. J
561 Hematol Oncol. 2019 May;12(1):47.
- 562 38. Leon SA, Shapiro B, Sklaroff DM, Yaros MJ. Free DNA in the serum of cancer
563 patients and the effect of therapy. Cancer Res. 1977 Mar;37(3):646–50.
- 564 39. van der Drift MA, Hol BEA, Klaassen CHW, Prinsen CFM, van Aarssen
565 YAWG, Donders R, et al. Circulating DNA is a non-invasive prognostic factor
566 for survival in non-small cell lung cancer. Lung Cancer. 2010 May;68(2):283–7.
- 567 40. Almodovar K, Iams WT, Meador CB, Zhao Z, York S, Horn L, et al.
568 Longitudinal cell-free DNA analysis in patients with small cell lung cancer
569 reveals dynamic insights into treatment efficacy and disease relapse.
570 2018;13(1):112–23.
- 571 41. Nong J, Gong Y, Guan Y, Yi X, Yi Y, Chang L, et al. Circulating tumor DNA
572 analysis depicts subclonal architecture and genomic evolution of small cell lung
573 cancer. Nat Commun. 2018;9(1):1–8.
- 574 42. Du M, Thompson J, Fisher H, Zhang P, Huang CC, Wang L. Genomic alterations
575 of plasma cell-free DNAs in small cell lung cancer and their clinical relevance.

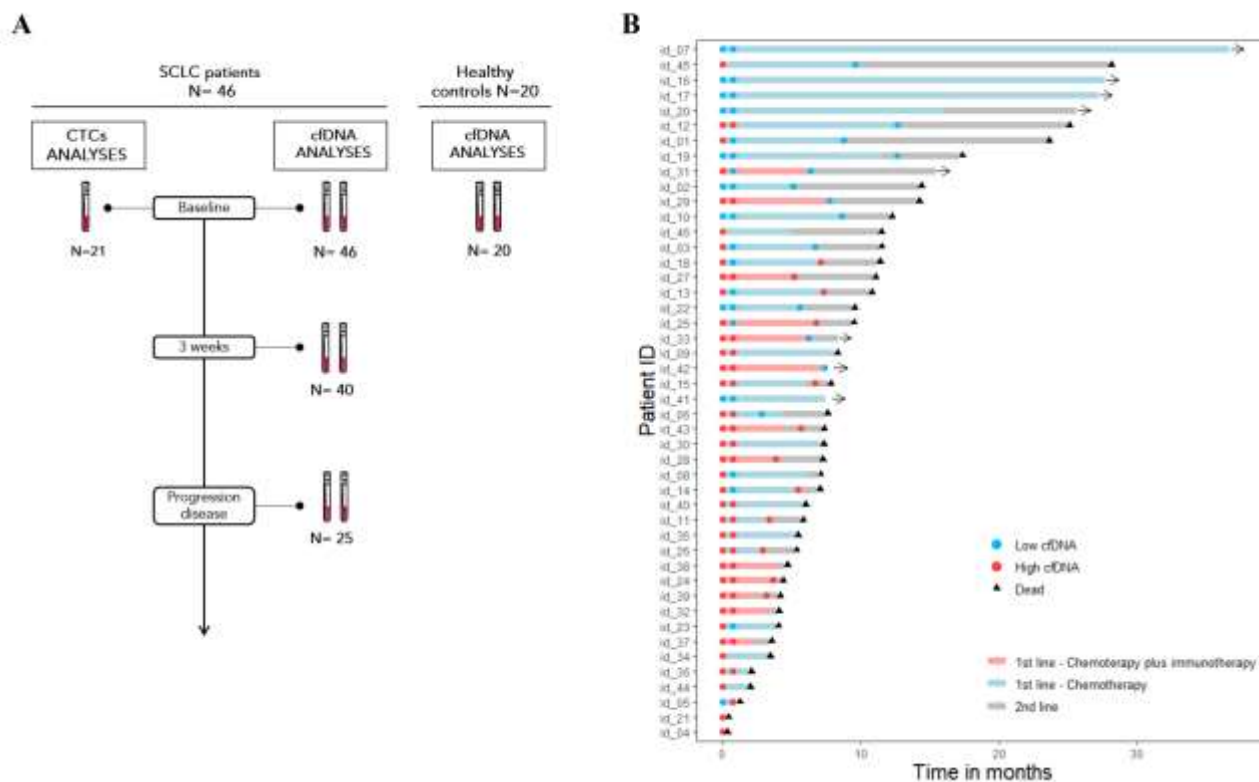
- 576 Lung Cancer. 2018;120:113–21.
- 577 43. Mohan S, Foy V, Ayub M, Leong HS, Schofield P, Sahoo S, et al. Profiling of
578 Circulating Free DNA Using Targeted and Genome-wide Sequencing in Patients
579 with SCLC. *J Thorac Oncol*. 2020;15(2):216–30.
- 580 44. Iams WT, Kopparapu PR, Yan Y, Muterspaugh A, Zhao Z, Chen H, et al. Blood-
581 Based Surveillance Monitoring of Circulating Tumor DNA From Patients With
582 SCLC Detects Disease Relapse and Predicts Death in Patients With Limited-
583 Stage Disease. *JTO Clin Res Reports*. 2020;1(2):100024.
- 584 45. Mondelo-Macía P, García-González J, León-Mateos L, Anido U, Aguin S,
585 Abdulkader I, et al. Clinical potential of circulating free DNA and circulating
586 tumour cells in patients with metastatic non-small cell lung cancer treated with
587 pembrolizumab. *Mol Oncol*. 2021;
- 588 46. Alama, Coco, Genova, Rossi, Fontana, Tagliamento, et al. Prognostic Relevance
589 of Circulating Tumor Cells and Circulating Cell-Free DNA Association in
590 Metastatic Non-Small Cell Lung Cancer Treated with Nivolumab. *J Clin Med*.
591 2019;8(7):1011.
- 592 47. Sirera R, Bremnes RM, Cabrera A, Jantus-Lewintre E, Sanmartín E, Blasco A, et
593 al. Circulating DNA is a useful prognostic factor in patients with advanced non-
594 small cell lung cancer. *J Thorac Oncol Off Publ Int Assoc Study Lung Cancer*.
595 2011 Feb;6(2):286–90.
- 596 48. Paci M, Maramotti S, Bellesia E, Formisano D, Albertazzi L, Ricchetti T, et al.
597 Circulating plasma DNA as diagnostic biomarker in non-small cell lung cancer.
598 *Lung Cancer*. 2009 Apr;64(1):92–7.
- 599 49. Hou JM, Greystoke A, Lancashire L, Cummings J, Ward T, Board R, et al.
600 Evaluation of circulating tumor cells and serological cell death biomarkers in

601 small cell lung cancer patients undergoing chemotherapy. *Am J Pathol.*
602 2009;175(2):808–16.
603 50. Hou JM, Krebs MG, Lancashire L, Sloane R, Backen A, Swain RK, et al.
604 Clinical significance and molecular characteristics of circulating tumor cells and
605 circulating tumor microemboli in patients with small-cell lung cancer. *J Clin*
606 *Oncol.* 2012;30(5):525–32.
607
608

609 **FIGURES**
610

611 **Figure 1.** Study schema and clinical course of all patients included in the study. (A)
612 Study sampling points and cohorts. (B) Swimmers' plot showing each patient therapy
613 and the different times of sample collection. The total length of each bar indicates the
614 duration of survival from the diagnoses. Abbreviations: SCLC, small-cell lung cancer;
615 CTCs, circulating tumor cells; cfDNA: cell free DNA.

616



620

629

630

631

632

633

634

635

636

637

638 **Figure 2.** (A) Correlation between cfDNA levels using Qubit method and qPCR assay
639 at different times of therapy (baseline, 3 weeks and progression disease). (B-C) Total
640 cfDNA levels in healthy controls and patients with SCLC. (D-E) ROC curves for Qubit
641 method (D) and qPCR assay (E) show high sensitivity and specificity to discriminate
642 healthy controls and SCLC patients. Abbreviations: cfDNA, cell free DNA; GE,
643 genomic equivalents; AUC, area under the curve; CI, confidence interval.

644

645

646

647

648

649

650

651

652

653

654

655

656

657

658

659

660

661

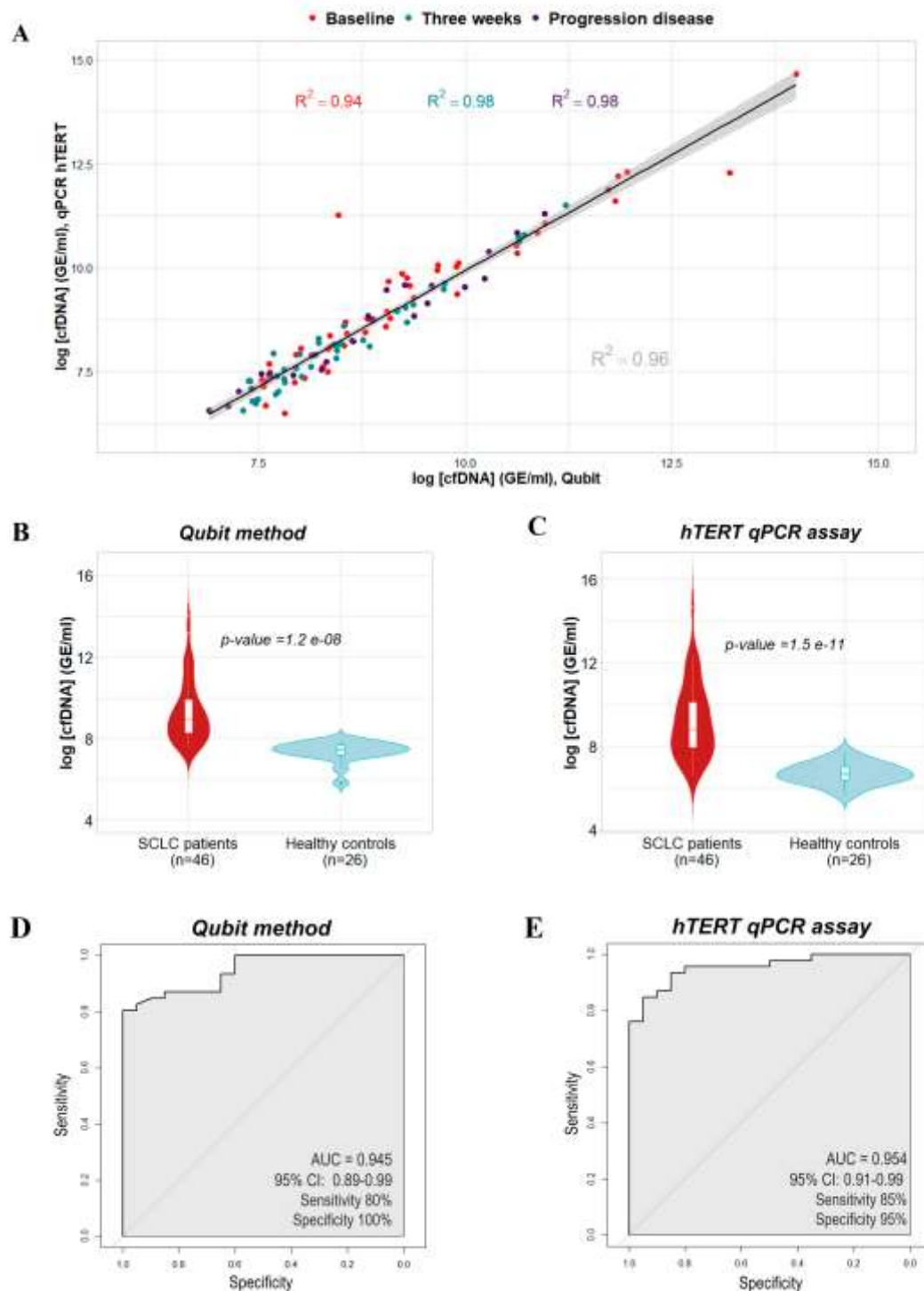
662

663

664

665

666



667 **Figure 3.** CfDNA levels as a prognostic biomarker at different time points of therapy.
 668 (A-B) Kaplan-Meier survival analysis of cfDNA levels at baseline for PFS (A) and OS
 669 (B). (C-D) Kaplan-Meier survival analysis of cfDNA levels at 3 weeks for PFS (C) and
 670 OS (D). (E) Kaplan-Meier survival analysis of cfDNA levels at progression disease for
 671 OS. Abbreviations: cfDNA, cell free DNA; OS, overall survival; PFS, progression-free
 672 survival; PD: progression disease.

673

674

675

676

677

678

679

680

681

682

683

684

685

686

687

688

689

690

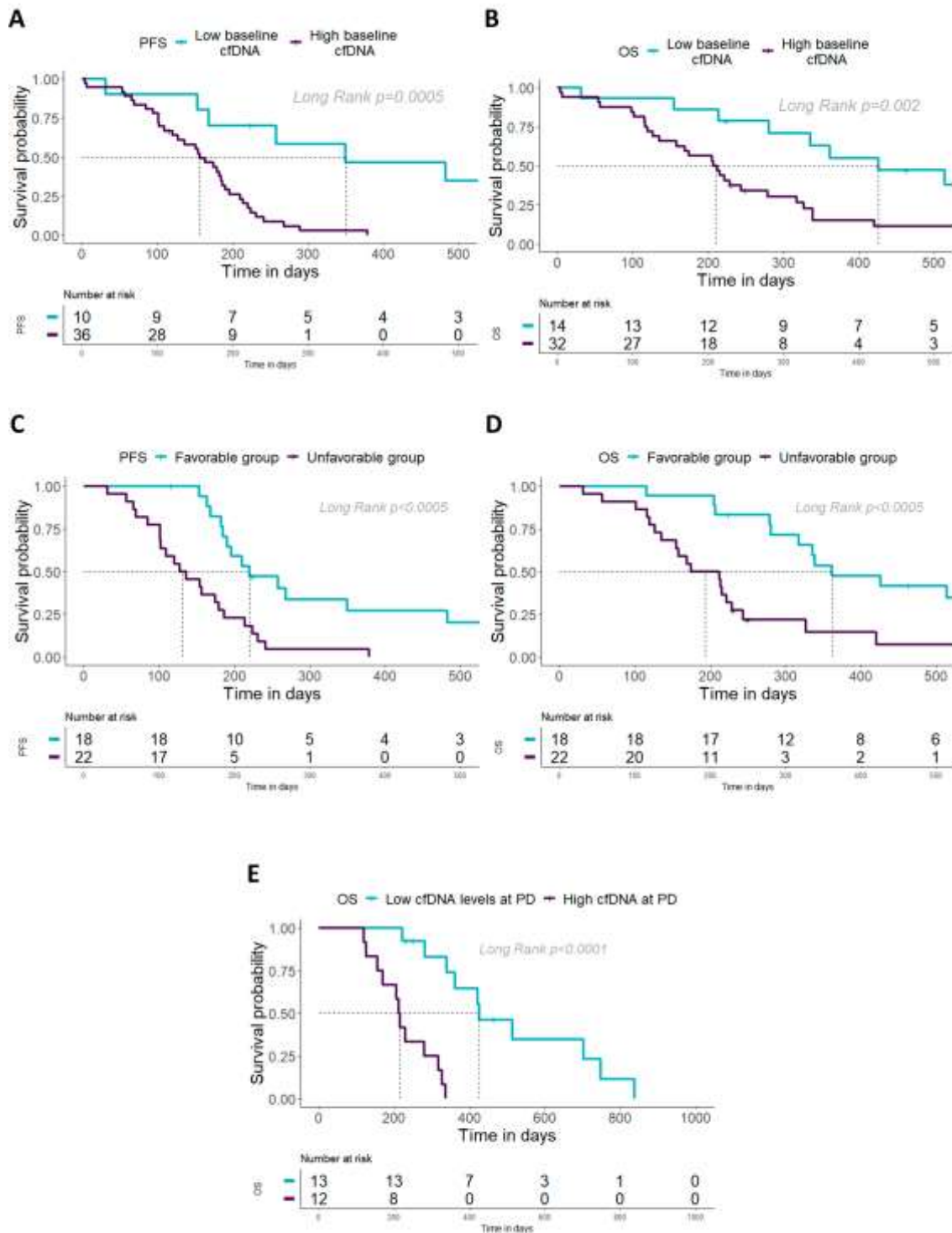
691

692

693

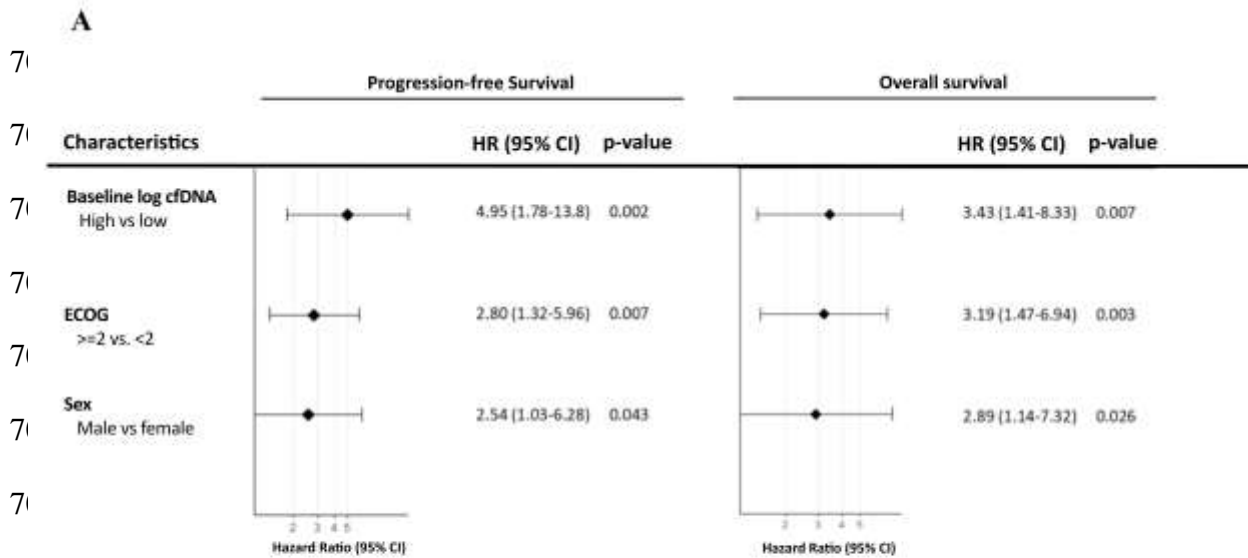
694

695

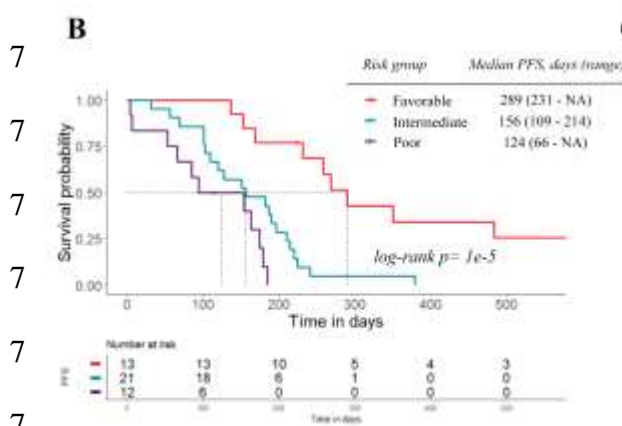


696 **Figure 4.** (A) Final multivariate Cox regression prognostic model for PFS and OS. (B-
697 C) Kaplan-Meier survival analysis according to risk-group for PFS and OS.
698 Abbreviations: cfDNA, cell free DNA; ECOG, Eastern Cooperative Oncology Group
699 Performance Score, PFS, progression-free survival; OS, overall survival; HR, hazard
700 ratio; CI, confidence interval.

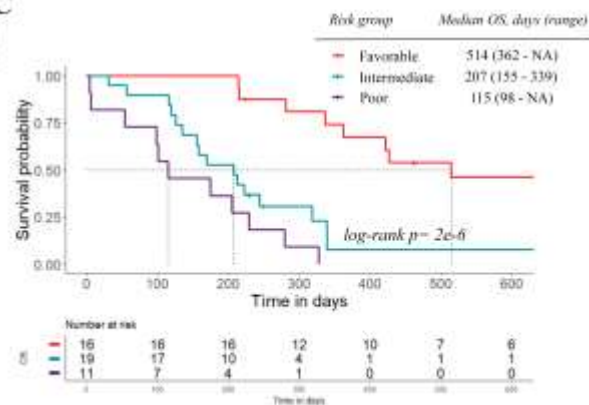
701



702



C



717

718

719

720

721

722 **TABLES**

723

724 **Table 1.** Association between patients' demographics/clinical characteristics and
725 baseline cfDNA levels.

Characteristics	Baseline cfDNA, median (GE/ml)	<i>p</i>-value
<i>Age,</i> 67, 66.83 ± 8.1, 47-83 (<i>Median, Mean age ± SD, range</i>)		
Bellow median, n=24 (52.17%)	6488.23	0.79
Above median, n=22 (47.82%)	8403.79	
<i>Gender</i>		
Male, n=39 (84.78%)	6130.59	0.61
Female, n=7 (15.22%)	15699.93	
<i>Stage</i>		
III, n=5 (10.87%)	1409.11	0.031
IV, n=41 (89.13%)	7658.99	
<i>ECOG PS</i>		
< 2, n=31 (67.39%)	4652.13	0.025
≥ 2, n=15 (32.61%)	22459.61	
<i>Smoking</i>		
Smoker, n=26 (56.52%)	6488.23	0.94
Former smoker, n=20 (43.48%)	6155.56	
<i>Number of metastasis</i>		
≤ 2, n=22 (47.82%)	4563.83	0.05
> 2, n=24 (52.17%)	12973.33	
<i>Liver metastases</i>		
No, n=23 (50.0%)	3355.91	2.20x10 ⁻⁴

Yes, n=23 (50.0%) 24759.83

Bone metastases

No, n=18 (39.13%) 3265.055 0.17

Yes, n=28 (60.87%) 3355.91

Lymph node metastases

No, n=10 (21.74%) 4563.83 0.12

Yes, n=36 (78.26%) 7658.99

Treatment

Chemotherapy, n=33 (71.74%) 6130.59 0.36

Chemotherapy plus Immunotherapy, n=13 (28.26%) 10676.99

726 Abbreviations: cfDNA: cell-free DNA; GE: genomic equivalents; SD: standard
727 deviation; ECOG PS: Eastern Cooperative Oncology Group Performance Status.

728

729

730

731

732

733

734

735

736

737

738

739

740

741

742

743

744

745

746

747

748

749

750

751

752

753

754 **Table 2.** Univariate and multivariate Cox regression analyses of cfDNA levels, CTC
755 counts and clinical parameters.

Variable	Univariate		Multivariate	
	p-value	HR (95% CI)	p-value	HR (95% CI)
PFS				
Baseline log cfDNA (high vs. low cfDNA)	0.001	5.06 (1.89-13.6)	0.005	46.0 (3.16-672)
Baseline CTC count, CellSearch (≥ 150 vs. < 150)	0.028	3.47 (1.14-10.6)		
ECOG (≥ 2 vs. < 2)	< 0.001	3.57 (1.72-7.40)	0.04	17.9 (1.11-289)
Sex (male vs. female)	0.2	1.76 (0.74-4.22)		
Age (continue)	0.5	1.01 (0.97-1.05)		
Stage (IV vs. III)	0.07	3.00 (0.91-9.91)		
Number of metastasis (> 2 vs. ≤ 2)	0.1	1.70 (0.90-3.19)		
Liver metastasis (yes vs. no)	0.08	1.74 (0.93-3.23)		
Smoking (smoker vs. former smoker)	0.8	0.92 (0.49-1.70)		
3 weeks log cfDNA (high vs. low cfDNA)*	< 0.0001	3.50 (1.69-7.23)	0.004	3.49 (1.50-8.12)
OS				
Baseline log cfDNA (high vs. low cfDNA)	0.003	3.32 (1.50-7.37)	0.004	32.4 (3.05-344)
Baseline CTC count, CellSearch (≥ 150 vs. < 150)	0.07	2.71 (0.93-7.88)		
ECOG (≥ 2 vs. < 2)	< 0.001	4.54 (2.13-9.68)		
Sex (male vs. female)	0.2	1.80 (0.75-4.36)		
Age (continue)	0.5	1.01 (0.97-1.06)		

Stage (IV vs. III)	0.08	2.86 (0.86-9.47)		
Number of metastasis (>2 vs. ≤2)	0.5	1.23 (0.65-2.33)		
Liver metastasis (yes vs. no)	0.3	1.45 (0.77-2.76)		
Smoking (smoker vs. former smoker)	0.5	0.82 (0.43-1.55)		
<hr/>				
3 weeks log cfDNA (high vs. low cfDNA)*	<0.001	3.67 (1.72-7.82)	0.002	4.35 (1.68-11.3)
PD log cfDNA (high vs. low cfDNA)*	<0.001	15.2 (3.28-70.7)	0.001	19.5 (3.30-115)

756

757 *Multivariate Cox regression model including sex, age, Eastern Cooperative Oncology
758 Group Performance Score, stage, number of metastases, presence of liver metastasis and
759 smoking status. The levels of cfDNA were determined as low (<cut-off) or high (≥cut-
760 off) based on the cut-off obtained from the ROC curve analyses. Abbreviations: cfDNA,
761 cell free DNA; CTC, circulating tumor cell; ECOG, Eastern Cooperative Oncology
762 Group Performance Score; PFS, progression-free survival; OS, overall survival; HR,
763 hazard ratio; CI, confidence interval.
764
765