

Contents

List of Tables **1**

List of Figures **1**

Supplementary Methods **1**

Supplementary Results **7**

List of Tables

1	Priority groups for primary vaccination advised by the Joint Committee on Vaccination and Immunisation	1
2	Eligibility dates for first vaccine dose	2
3	Variable definitions	3
4	Additional characteristics summarised across groups.	24
5	Event counts during each comparison period.	25
6	Unadjusted hazard ratios for each comparison period.	26
7	Adjusted hazard ratios for each comparison period.	27
8	Ratio of adjusted hazard ratios for each comparison period.	28
9	Hazard ratios corresponding to covariates in the adjusted BNT162b2 vs unvaccinated model in the 65+ years subgroup.	36
10	Hazard ratios corresponding to covariates in the adjusted ChAdOx1 vs unvaccinated model in the 65+ years subgroup.	38
11	Hazard ratios corresponding to covariates in the adjusted BNT162b2 vs ChAdOx1 model in the 65+ years subgroup.	40
12	Hazard ratios corresponding to covariates in the adjusted BNT162b2 vs unvaccinated model in the 16-64 years and clinically vulnerable subgroup.	42
13	Hazard ratios corresponding to covariates in the adjusted ChAdOx1 vs unvaccinated model in the 16-64 years and clinically vulnerable subgroup.	44
14	Hazard ratios corresponding to covariates in the adjusted BNT162b2 vs ChAdOx1 model in the 16-64 years and clinically vulnerable subgroup.	46
15	Hazard ratios corresponding to covariates in the adjusted BNT162b2 vs unvaccinated model in the 40-64 years and not clinically vulnerable subgroup.	48
16	Hazard ratios corresponding to covariates in the adjusted ChAdOx1 vs unvaccinated model in the 40-64 years and not clinically vulnerable subgroup.	50
17	Hazard ratios corresponding to covariates in the adjusted BNT162b2 vs ChAdOx1 model in the 40-64 years and not clinically vulnerable subgroup.	52
18	Hazard ratios corresponding to covariates in the adjusted BNT162b2 vs unvaccinated model in the 18-39 years and not clinically vulnerable subgroup.	54

List of Figures

1	Study eligibility criteria.	6
2	Flow of individuals into study	7
3	Second vaccination period for JCVI group 2	8
4	Second vaccination period for JCVI group 3	9
5	Second vaccination period for JCVI group 4	10

6	Second vaccination period for JCVI group 5	11
7	Second vaccination period for JCVI group 6	12
8	Second vaccination period for JCVI group 7 and aged 64 years	13
9	Second vaccination period for JCVI group 7 and aged 60-63 years	14
10	Second vaccination period for JCVI group 8	15
11	Second vaccination period for JCVI group 9	16
12	Second vaccination period for JCVI group 10 and aged 45-49 years	17
13	Second vaccination period for JCVI group 10 and aged 40-44 years	18
14	Second vaccination period for JCVI group 11 and aged 36-39 years	19
15	Second vaccination period for JCVI group 11 and aged 30-35 years	20
16	Second vaccination period for JCVI group 12 and aged 25-29 years	21
17	Second vaccination period for JCVI group 12 and aged 18-24 years	22
18	Cumulative incidence of subsequent vaccination. *And not clinically vulnerable.	23
19	Unadjusted and adjusted hazard ratios for BNT162b2 vs unvaccinated	29
20	Unadjusted and adjusted hazard ratios for ChAdOx1 vs unvaccinated	30
21	Unadjusted and adjusted hazard ratios for BNT162b2 vs ChAdOx1	31
22	Unadjusted and adjusted hazard ratios for any SARS-CoV-2 test for BNT162b2 vs unvaccinated	32
23	Unadjusted and adjusted hazard ratios for any SARS-CoV-2 test for ChAdOx1 vs unvaccinated	33
24	Unadjusted and adjusted hazard ratios for any SARS-CoV-2 test for BNT162b2 vs ChAdOx1	34
25	Adjusted hazard ratios for any SARS-CoV-2 test for BNT162b2 and ChAdOx1 vs unvaccinated	35
26	Adjusted hazard ratios for any SARS-CoV-2 test for BNT162b2 vs ChAdOx1	35

Supplementary Methods

Supplementary Table 1: Priority groups for primary vaccination advised by the Joint Committee on Vaccination and Immunisation

Priority group	Risk group
1	Residents in a care home for older adults Staff in a care home for older adults
2	All those 80 years of age and over Frontline health and social care workers
3	All those 75 years of age and over
4	All those 70 years of age and over Individuals aged 16 to 69 in a high risk group ^a
5	All those 65 years of age and over
6	Individuals aged 16 to 65 years in an at-risk group ^a
7	All those 60 years of age and over
8	All those 55 years of age and over
9	All those 50 years of age and over
10	All those 40 years of age and over
11	All those 30 years of age and over
12	All those 18 years of age and over

^a See [COVID-19: the green book, chapter 14a](#) for definitions of the high-risk and at-risk groups.

Supplementary Table 2: Eligibility dates for first vaccine dose

Grouped eligibility date	Exact eligibility date	JCVI groups	Age range	Reference
2020-12-08	2020-12-08	01, 02, 03	-	source
2021-01-18	2021-01-18	04	-	source
2021-02-15	2021-02-15	05, 06	-	source
2021-02-22	2021-02-22	07	64	source
2021-03-01	2021-03-01	07	60-63	source
2021-03-08	2021-03-08	08	56-59	source
	2021-03-09	08	55	source
2021-03-19	2021-03-19	09	50-54	source
2021-04-13	2021-04-13	10	45-49	source
2021-04-26	2021-04-26	10	44	source
	2021-04-27	10	42-43	source
	2021-04-30	10	40-41	source
2021-05-13	2021-05-13	11	38-39	source
	2021-05-19	11	36-37	source
2021-05-21	2021-05-21	11	34-35	source
	2021-05-25	11	32-33	source
	2021-05-26	11	30-31	source
2021-06-08	2021-06-08	12	25-29	source
2021-06-15	2021-06-15	12	23-24	source
	2021-06-16	12	21-22	source
	2021-06-18	12	18-20	source

JCVI: Joint Committee on Vaccination and Immunisation

Supplementary Table 3: Variable definitions

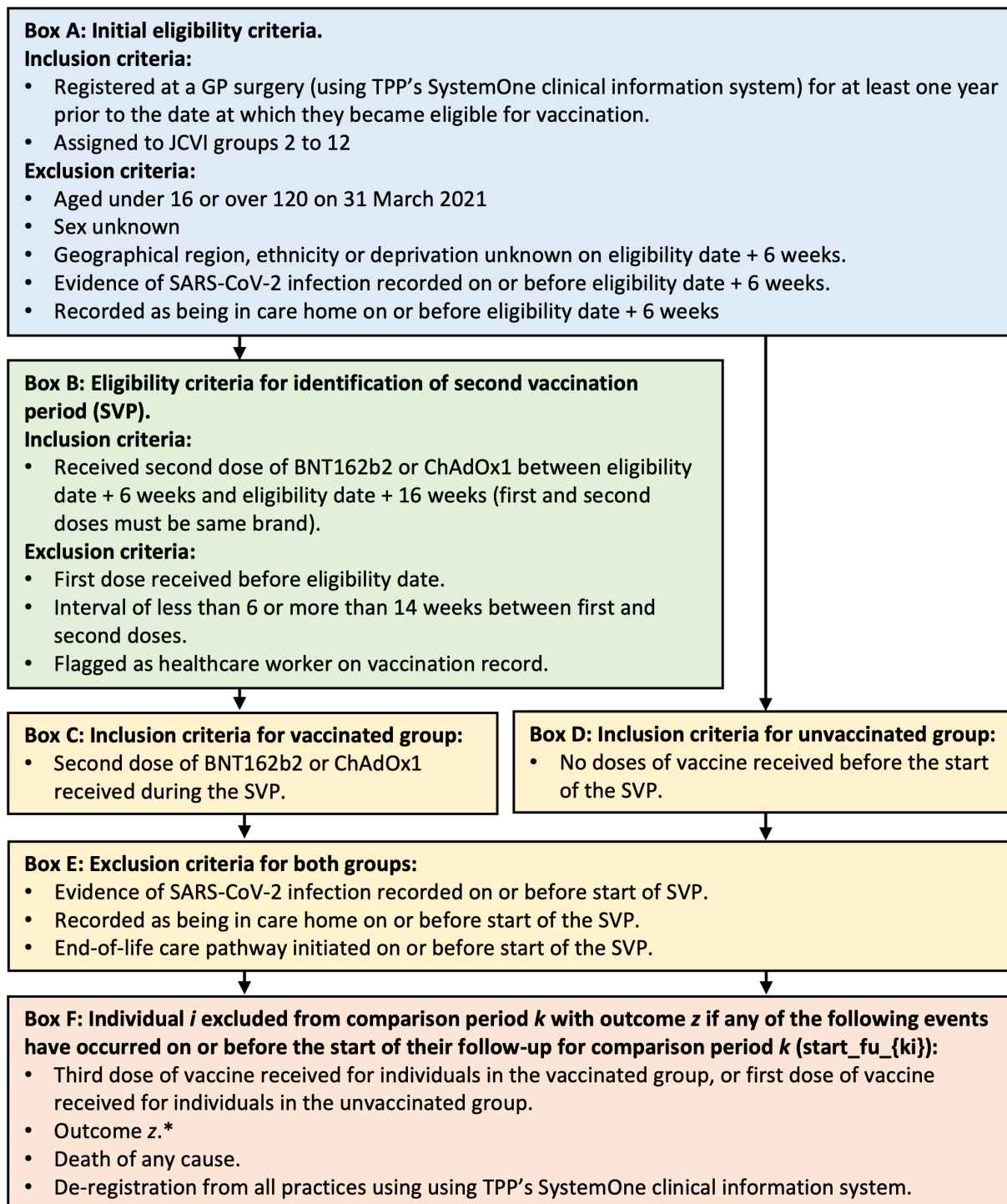
Group	Name	Description	Encoding	Date defined
Exclusion criteria	Evidence of prior COVID-19 infection	Date of code corresponding to COVID-19 hospitalisation, positive SARS-CoV-2 test, or probable COVID-19 code in GP record.	Date	First occurrence
	End-of-life care pathway initiated	Date of code corresponding to end-of-life care or midazolam injection used in end-of-life care in patient's record.	Date	First occurrence prior to SVP
	Resident in care home	Date of code corresponding to care home in patient's record.	Date	First occurrence prior to SVP
Strata	JCVI group	Priority groups defined by the JCVI expert advisory group	2-12	Age defined on 31 March 2021 for individuals eligible in phase 1 and 1 July 2021 for individuals eligible in phase 2. Individuals defined as clinically extremely vulnerable on 18 January 2021, and at-risk on 15 February 2021.
	Eligibility date	Date on which JCVI group (or age range within group) became eligible for 1st dose of COVID-19 vaccination.	Date	-
	Region	NHS region based on practice address.	East of England; Midlands; London; North East; Yorkshire; North West; South East; South West.	Eligibility date + 6 weeks.
Potential confounders (demographic)	Sex	-	M; F.	-
	Age	Age in whole years.	Numeric ^a	start _{1i}
	Ethnicity	From primary care records or SUS if missing from primary care.	Black; Mixed; South Asian; White; Other.	Eligibility date + 6 weeks
	Index of Multiple Deprivation (IMD)	IMD quintile based on patient address	1; 2; 3; 4; 5.	Eligibility date + 6 weeks

Supplementary Table 3: Variable definitions (continued)

Group	Name	Description	Encoding	Date defined
Potential confounders (clinical)	Body Mass Index (BMI)	Based on numeric BMI data from primary care records.	Under 30kg/m ² or not recorded; 30-34.9; 35-39.9; 40+ kg/m ² .	start _{ki}
	Chronic heart disease; Chronic respiratory disease; Chronic liver disease; Chronic kidney disease; Diabetes; Chronic neurological disease; Immunosuppressed; Learning disability including Down's syndrome; Serious mental illness.	Any code in primary care record before date defined.	0; 1.	start _{ki}
	Multimorbidity	Number of comorbid conditions in different organ systems.	0; 1; 2+	start _{ki}
	Influenza vaccination	Any record in past 5 years.	0; 1.	Eligibility date
	Clinically extremely vulnerable	UK government COVID-19 shielding criteria met.	0; 1.	start _{ki}
	Pregnancy	Pregnancy recorded in 36 weeks prior to date and no delivery code recorded more recently than pregnancy code.	0; 1.	start _{ki}
	Care home	Code corresponding to care home in patient's record before evaluation date.	0; 1.	start _{ki}
	Housebound	Code indicating that the individual is housebound.	0; 1.	start _{ki}
	Number of SARS-CoV-2 tests.	SARS-CoV-2 tests were identified using SGSS records and based on swab date. Both polymerase chain reaction (PCR) and lateral flow tests will be included, without differentiation between symptomatic and asymptomatic infection.	Integer	Between 18 May 2020 (when widespread testing became available in England) and the earliest date of eligibility for first dose in the subgroup.

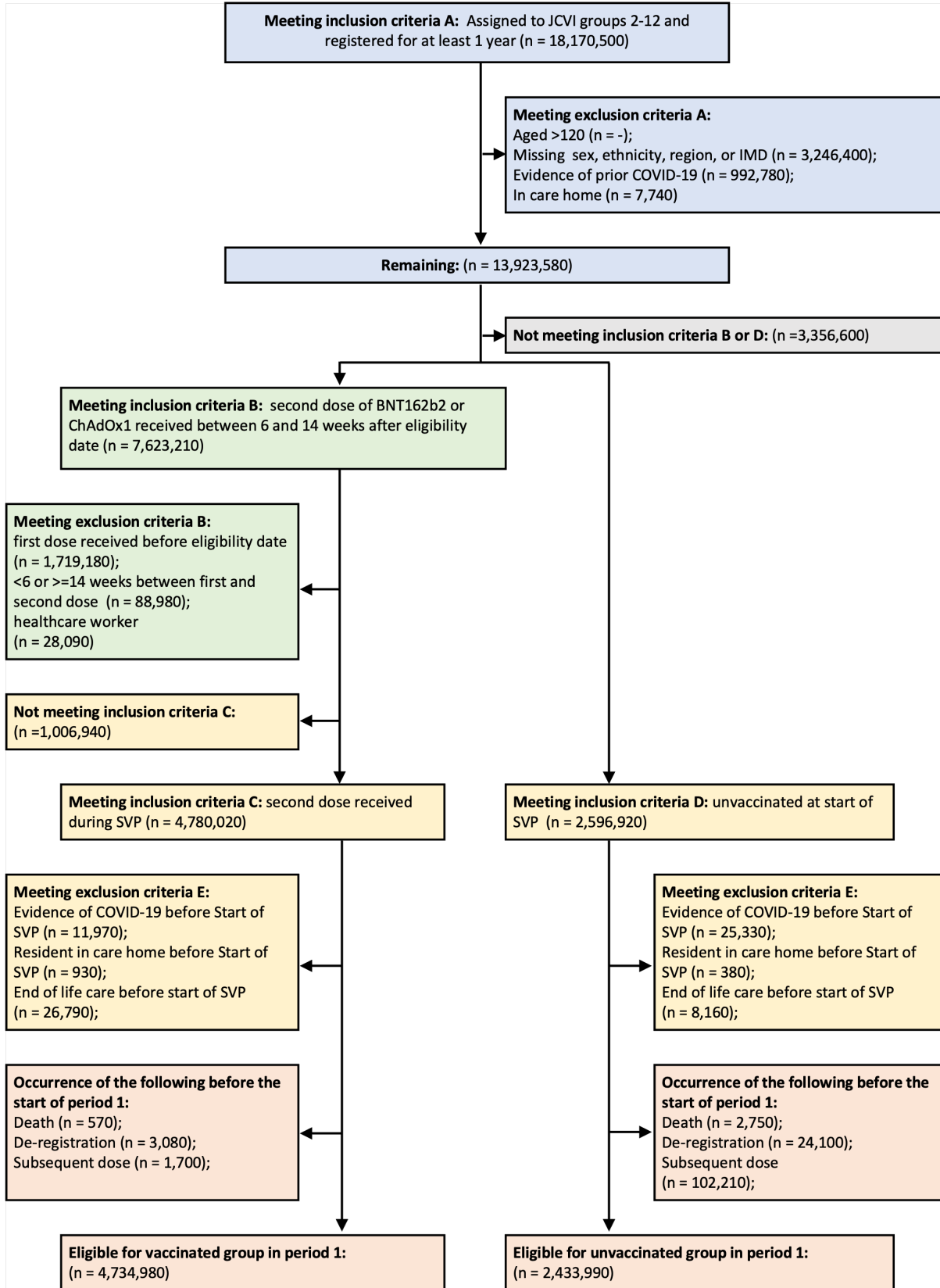
JCVI: Joint Committee on Vaccination and Immunisation; start_{ki} is the start date of comparison period *k* for individual *i*.

^a Age was modelled separately within each strata. Age within strata was modelled as linear, with quadratic terms additionally included for strata with age range >5 years.



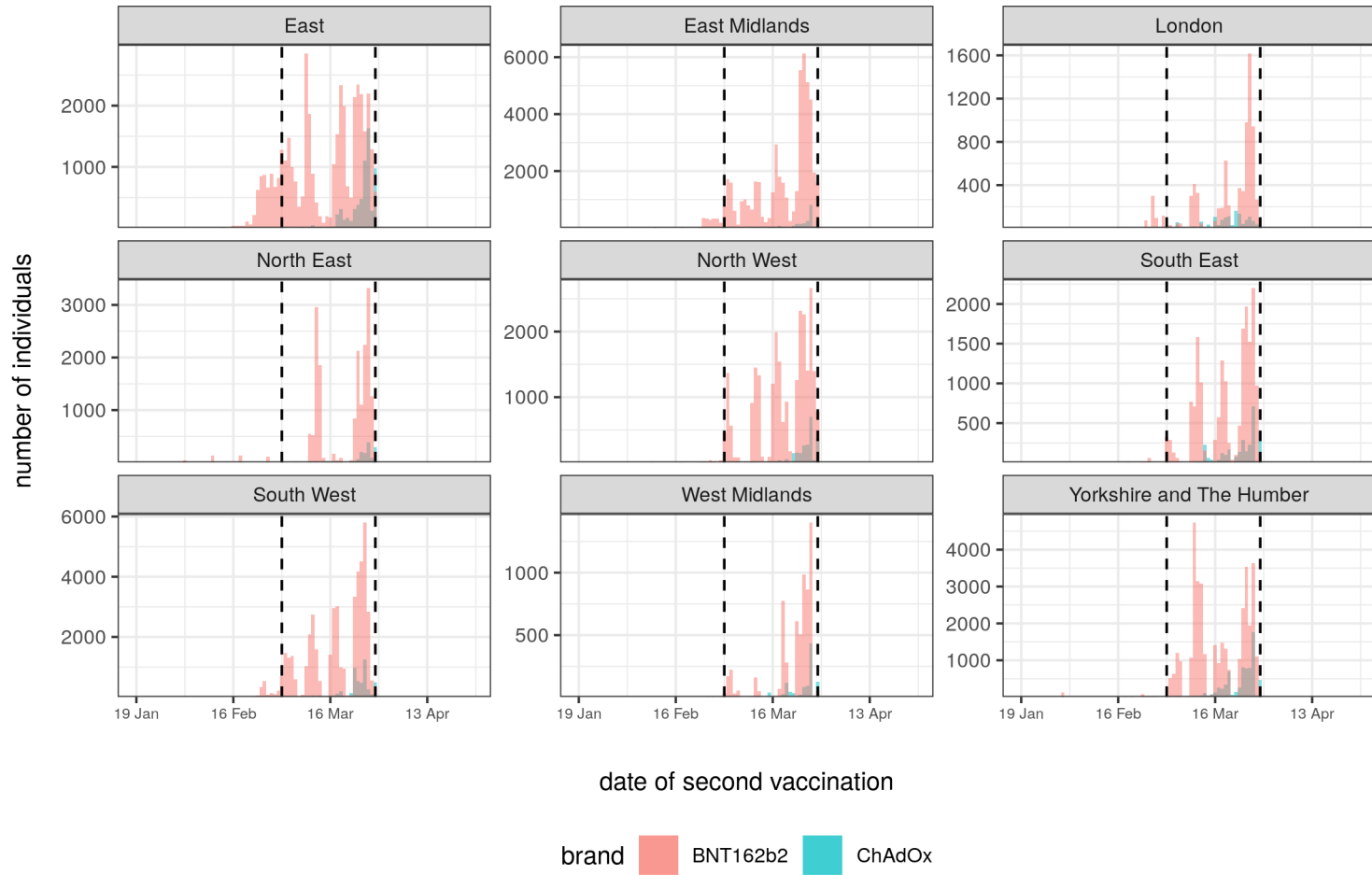
Supplementary Figure 1: Study eligibility criteria.

Supplementary Results



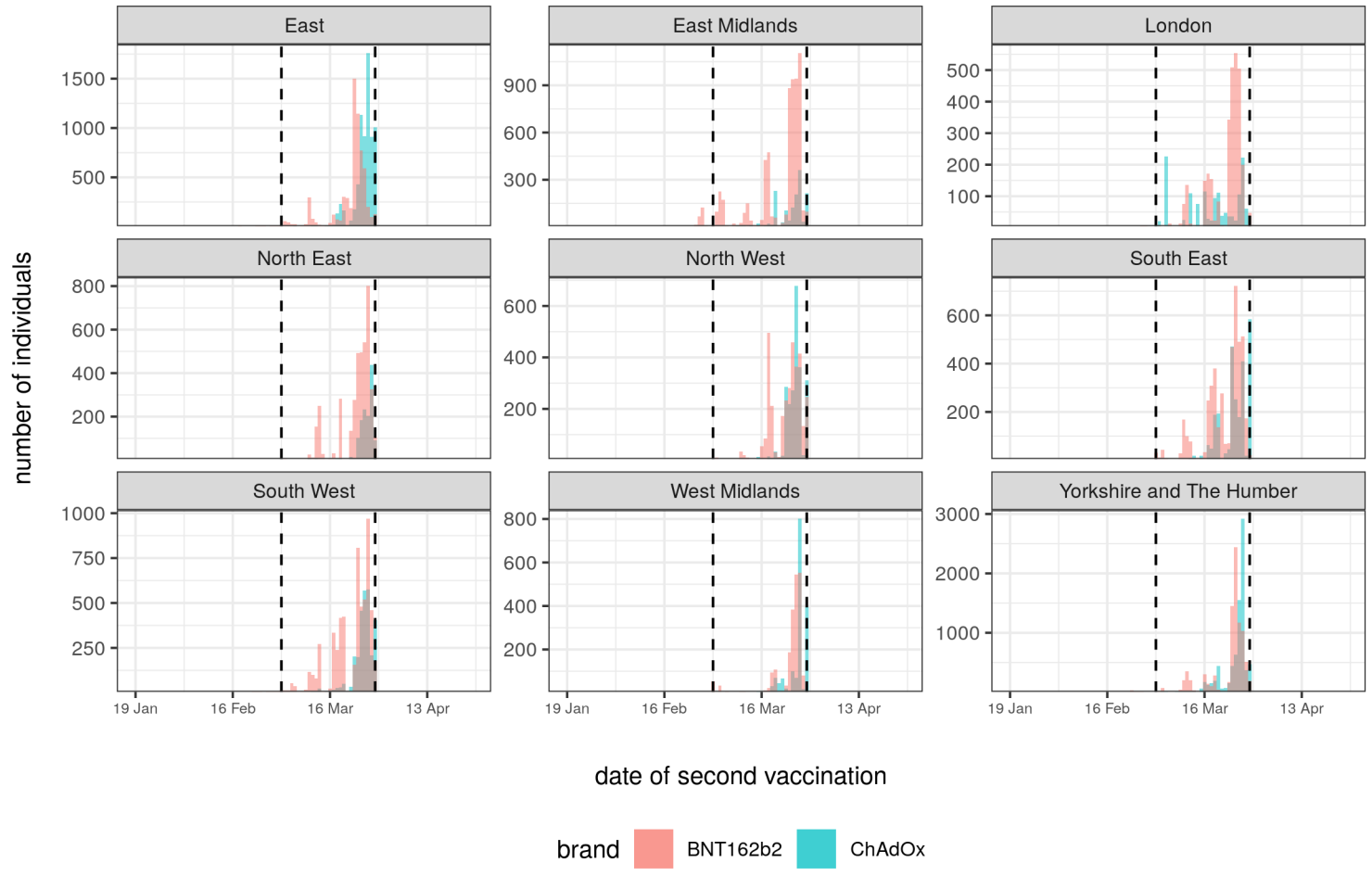
Supplementary Figure 2: Flow of individuals into study

JCVI group 02; eligible from 2020-12-08
Age range: 80 + years



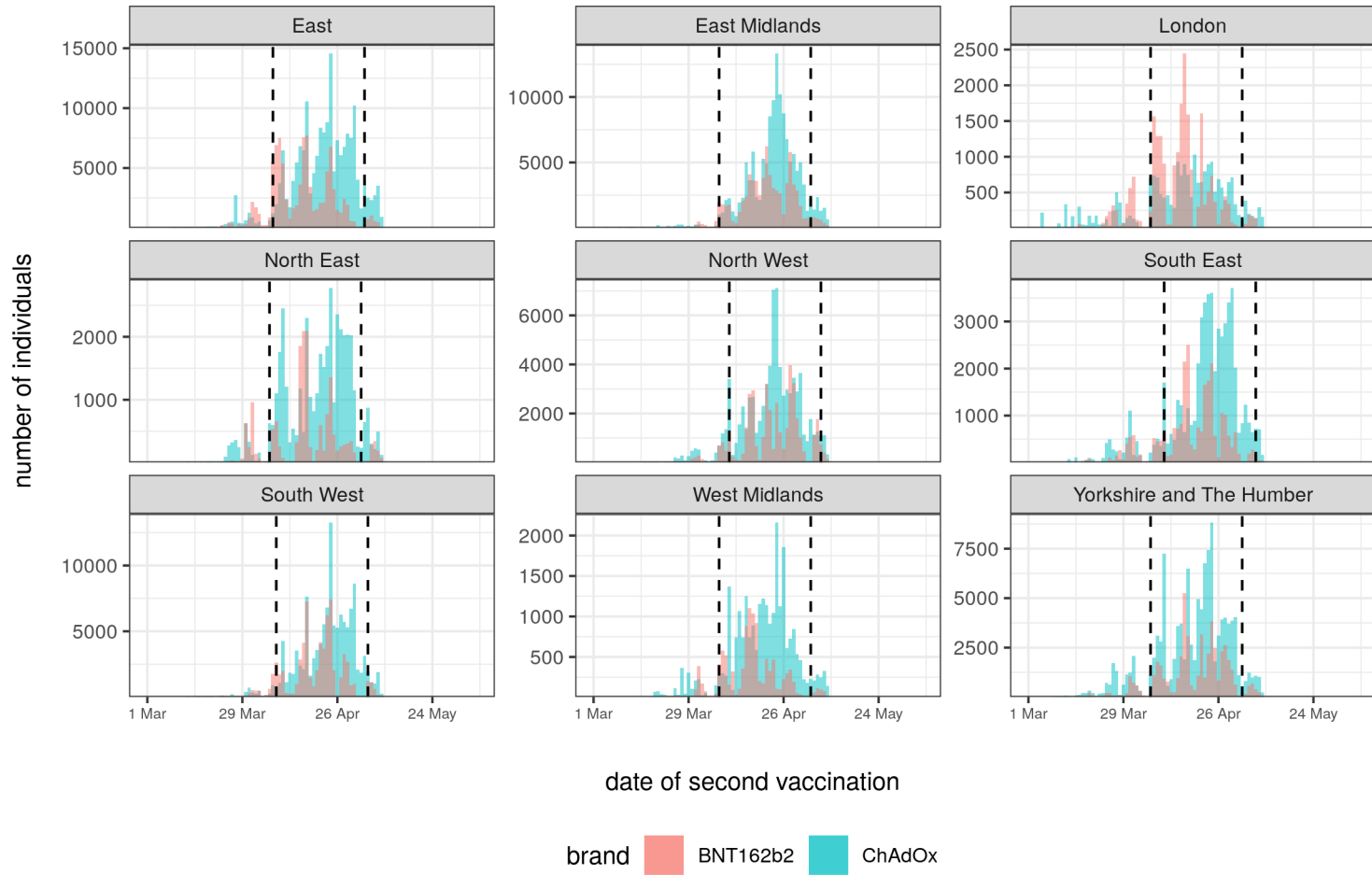
Supplementary Figure 3: Second vaccination period for JCVI group 2

JCVI group 03; eligible from 2020-12-08
Age range: 75 - 79 years



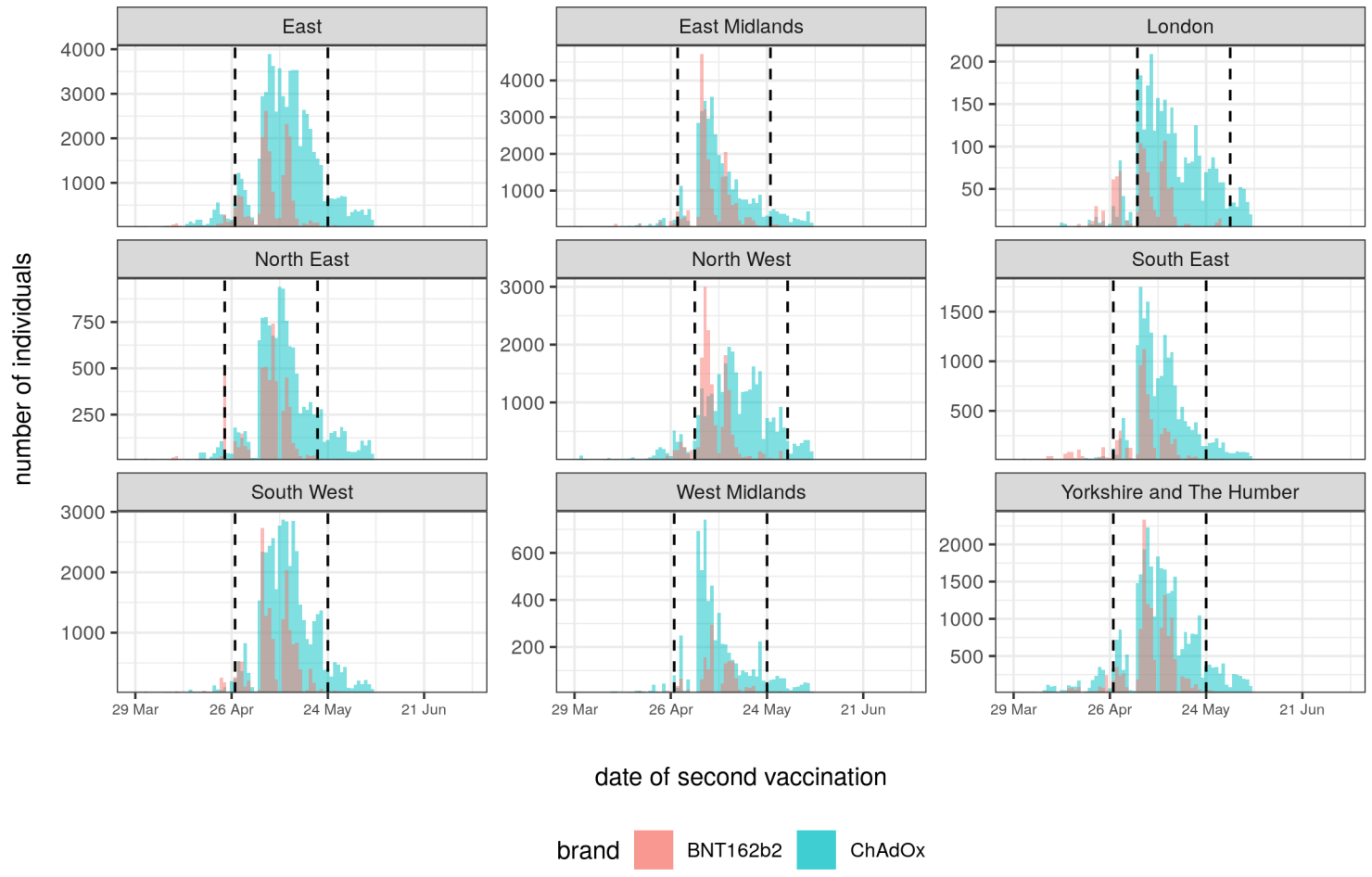
Supplementary Figure 4: Second vaccination period for JCVI group 3

JCVI group 04; eligible from 2021-01-18
Age range: 16 - 74 years



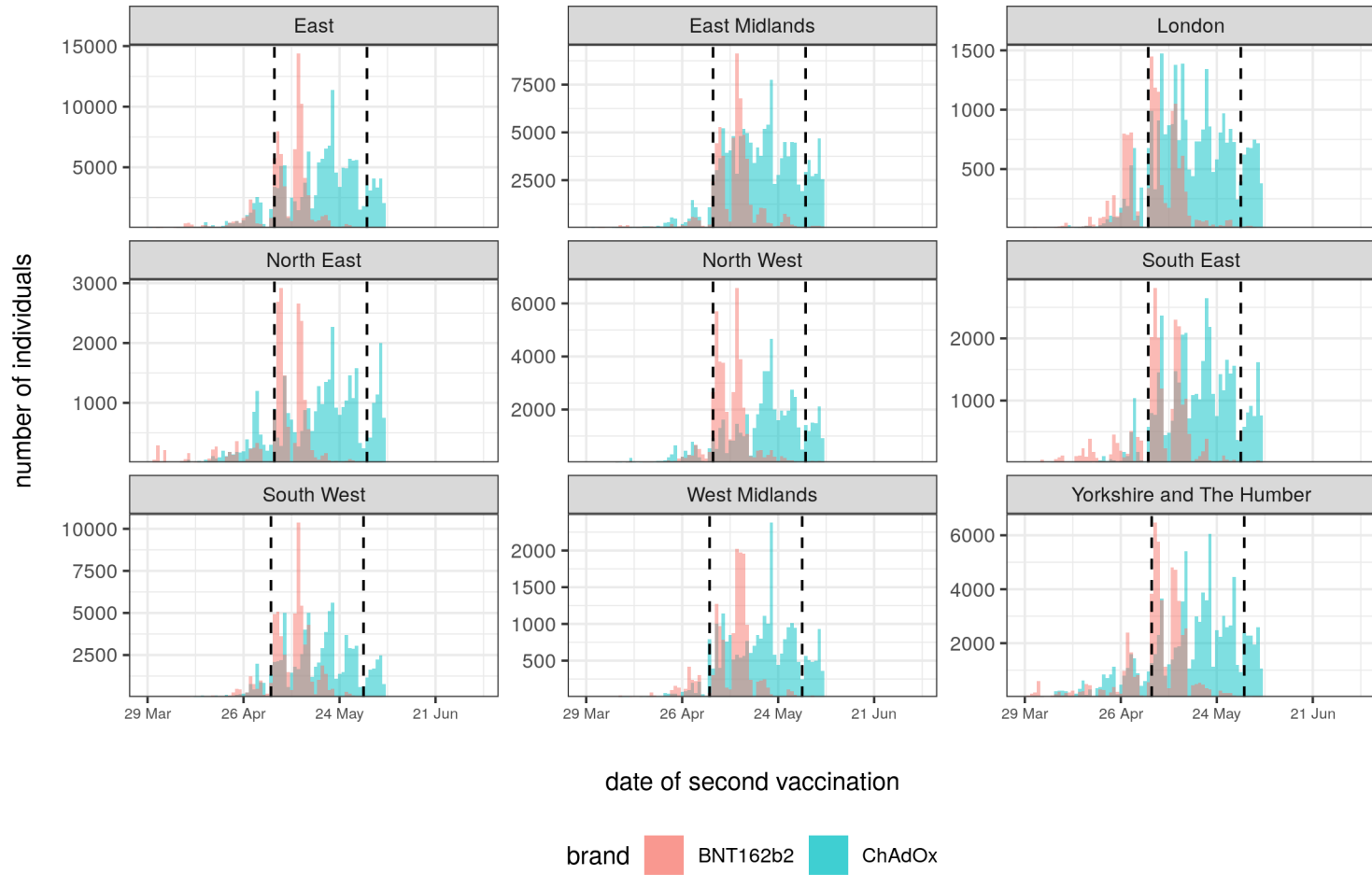
Supplementary Figure 5: Second vaccination period for JCVI group 4

JCVI group 05; eligible from 2021-02-15
Age range: 65 - 69 years



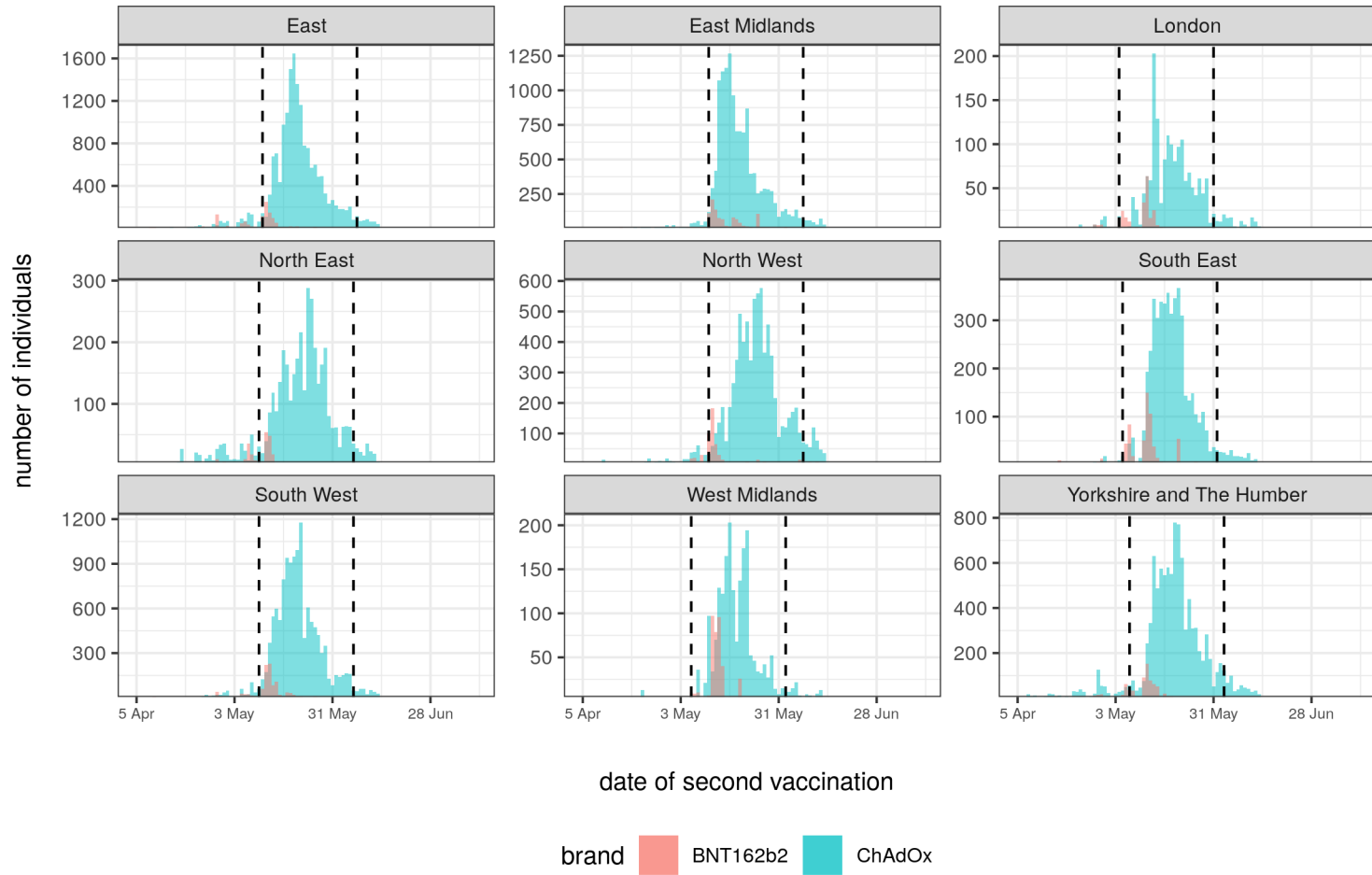
Supplementary Figure 6: Second vaccination period for JCVI group 5

JCVI group 06; eligible from 2021-02-15
Age range: 16 - 64 years



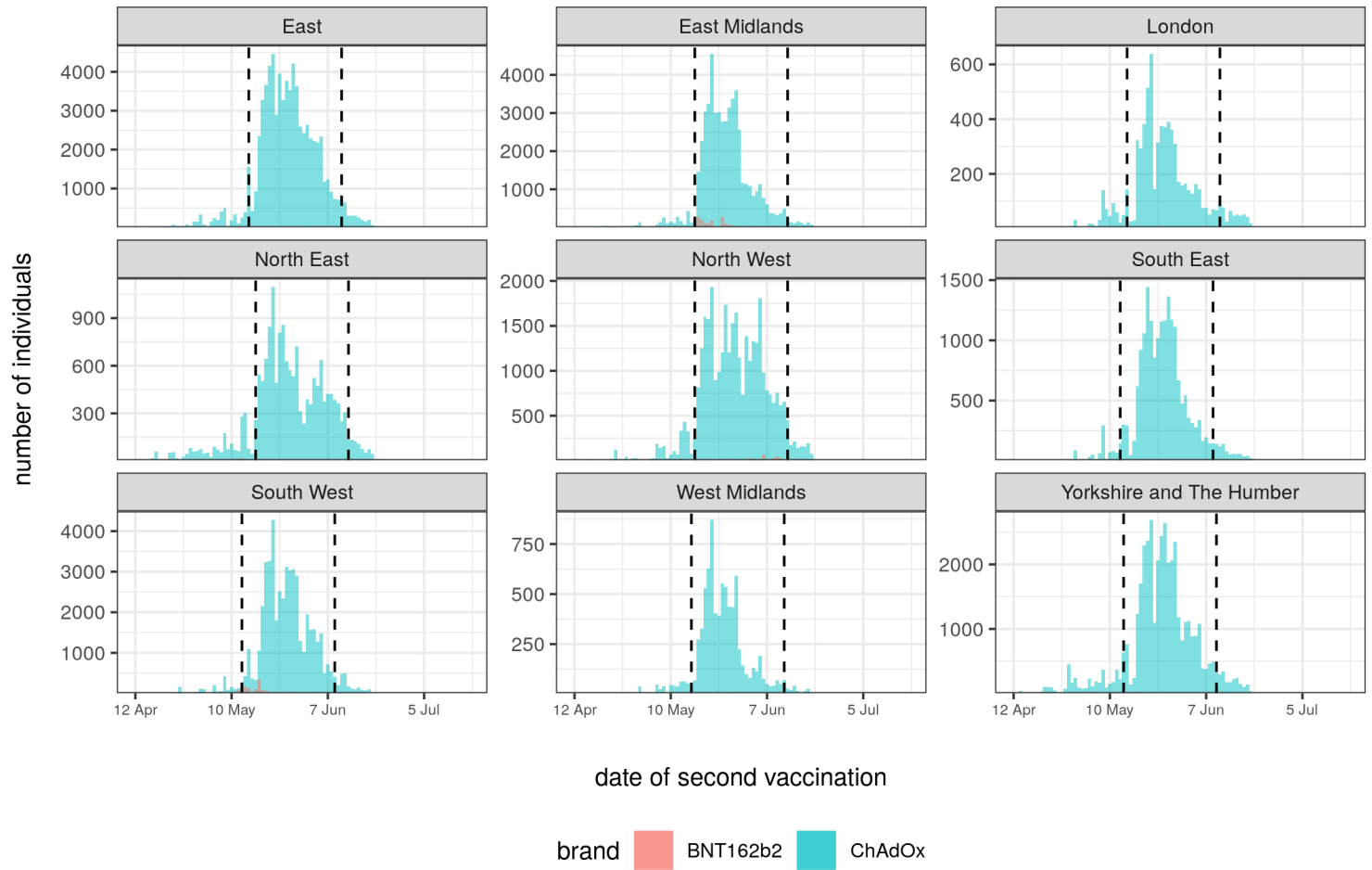
Supplementary Figure 7: Second vaccination period for JCVI group 6

JCVI group 07; eligible from 2021-02-22
Age range: 64 - 64 years



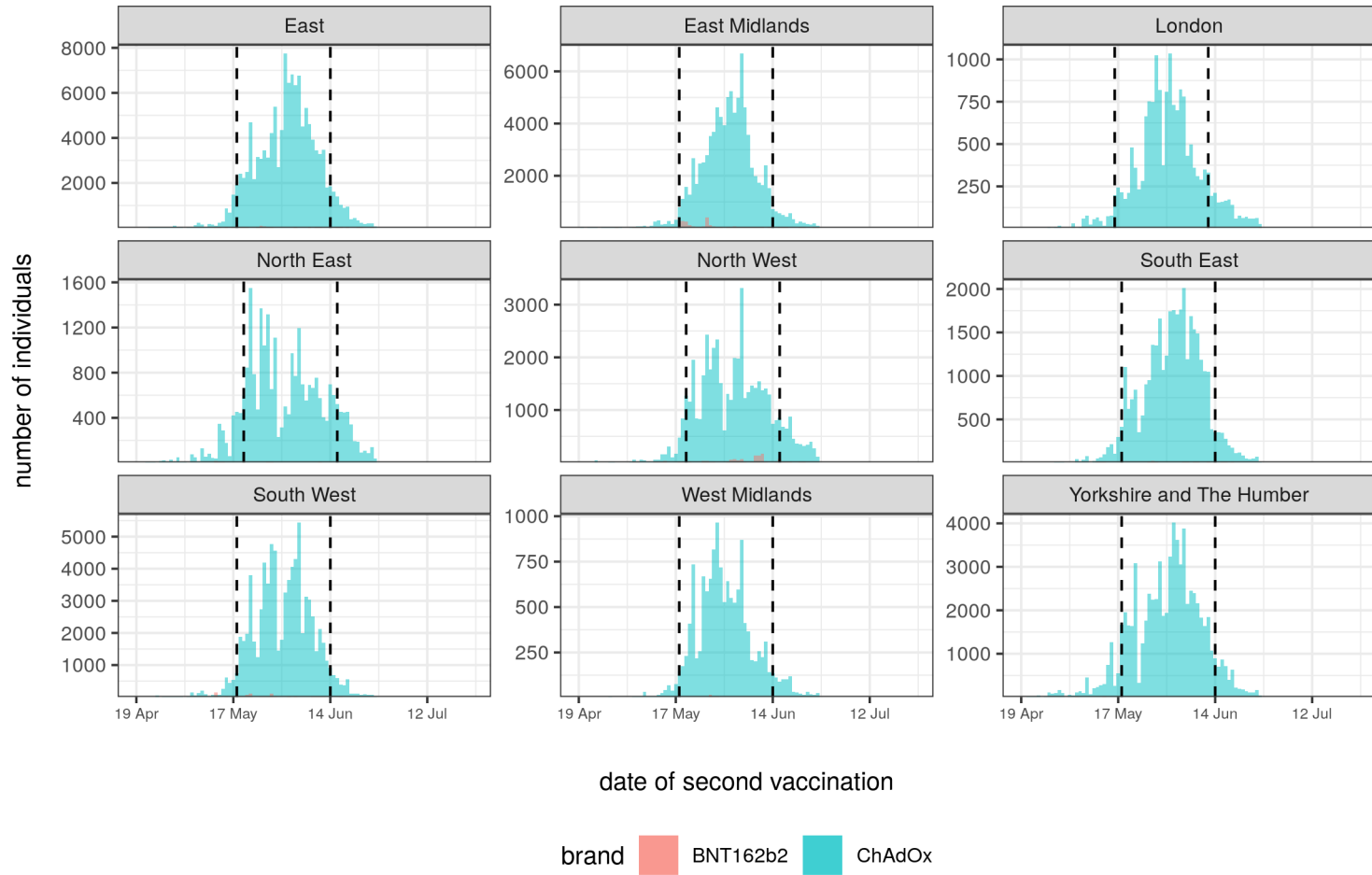
Supplementary Figure 8: Second vaccination period for JCVI group 7 and aged 64 years

JCVI group 07; eligible from 2021-03-01
Age range: 60 - 63 years



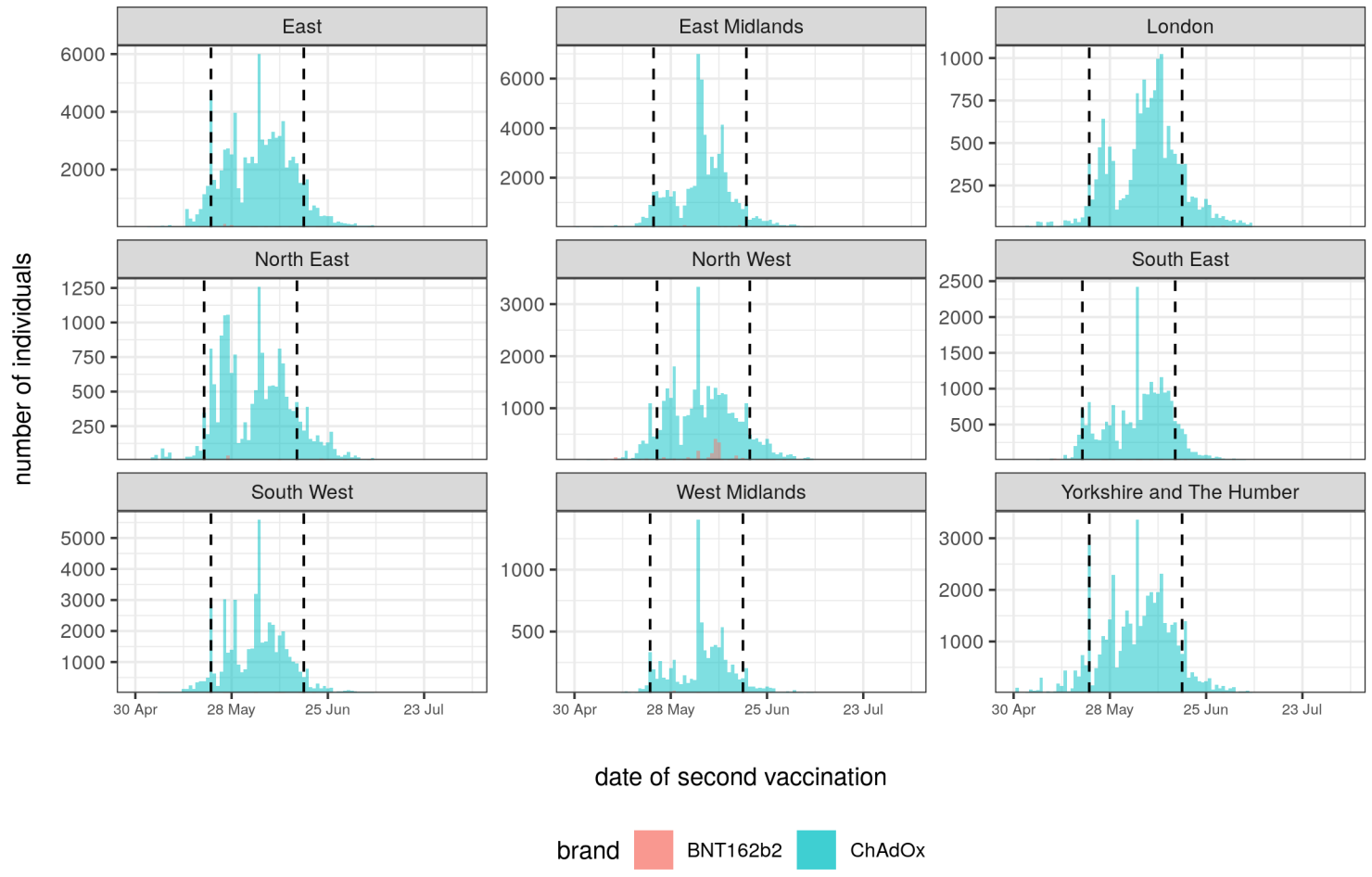
Supplementary Figure 9: Second vaccination period for JCVI group 7 and aged 60-63 years

JCVI group 08; eligible from 2021-03-08
Age range: 55 - 59 years



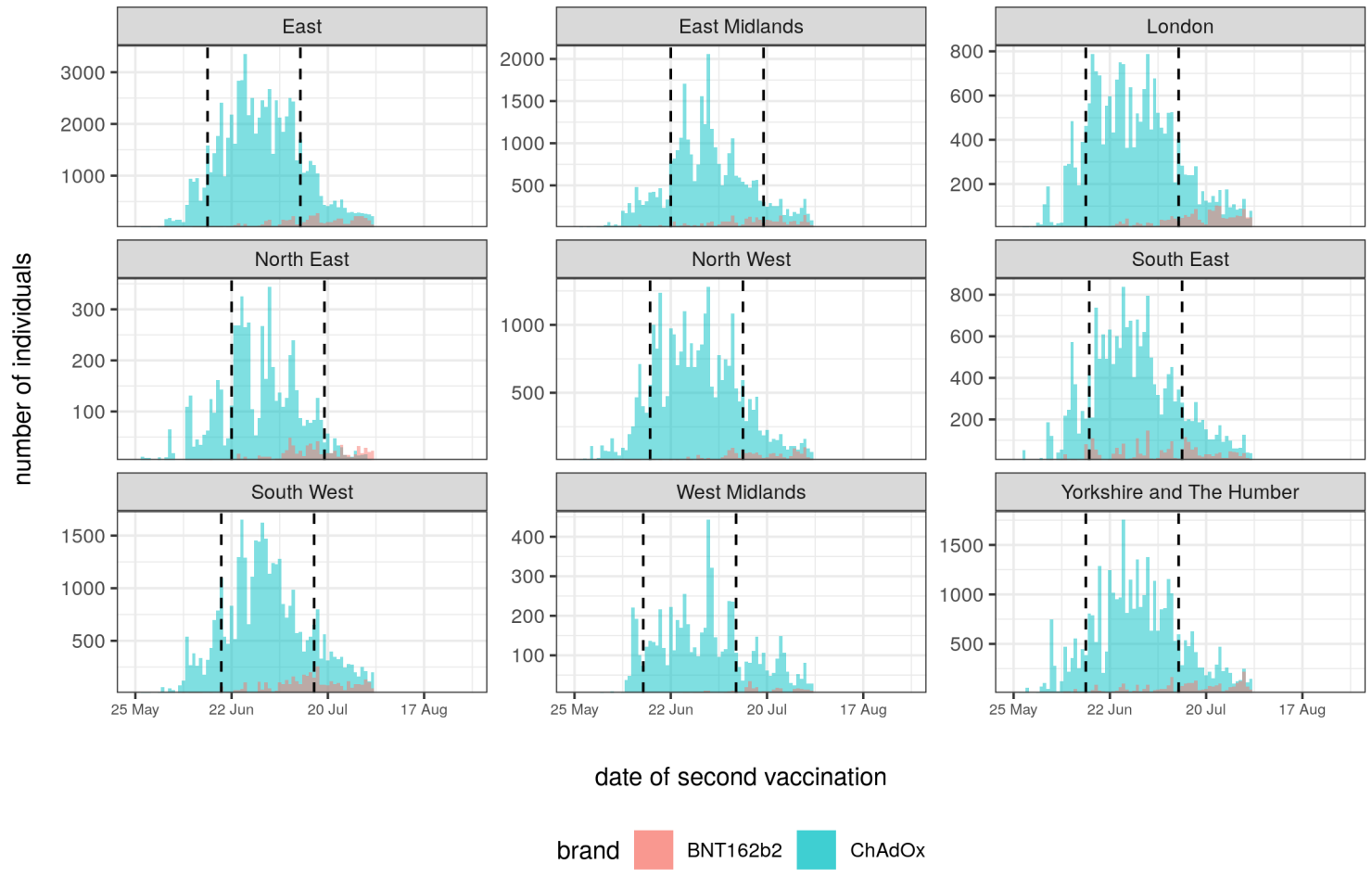
Supplementary Figure 10: Second vaccination period for JCVI group 8

JCVI group 09; eligible from 2021-03-19
Age range: 50 - 54 years



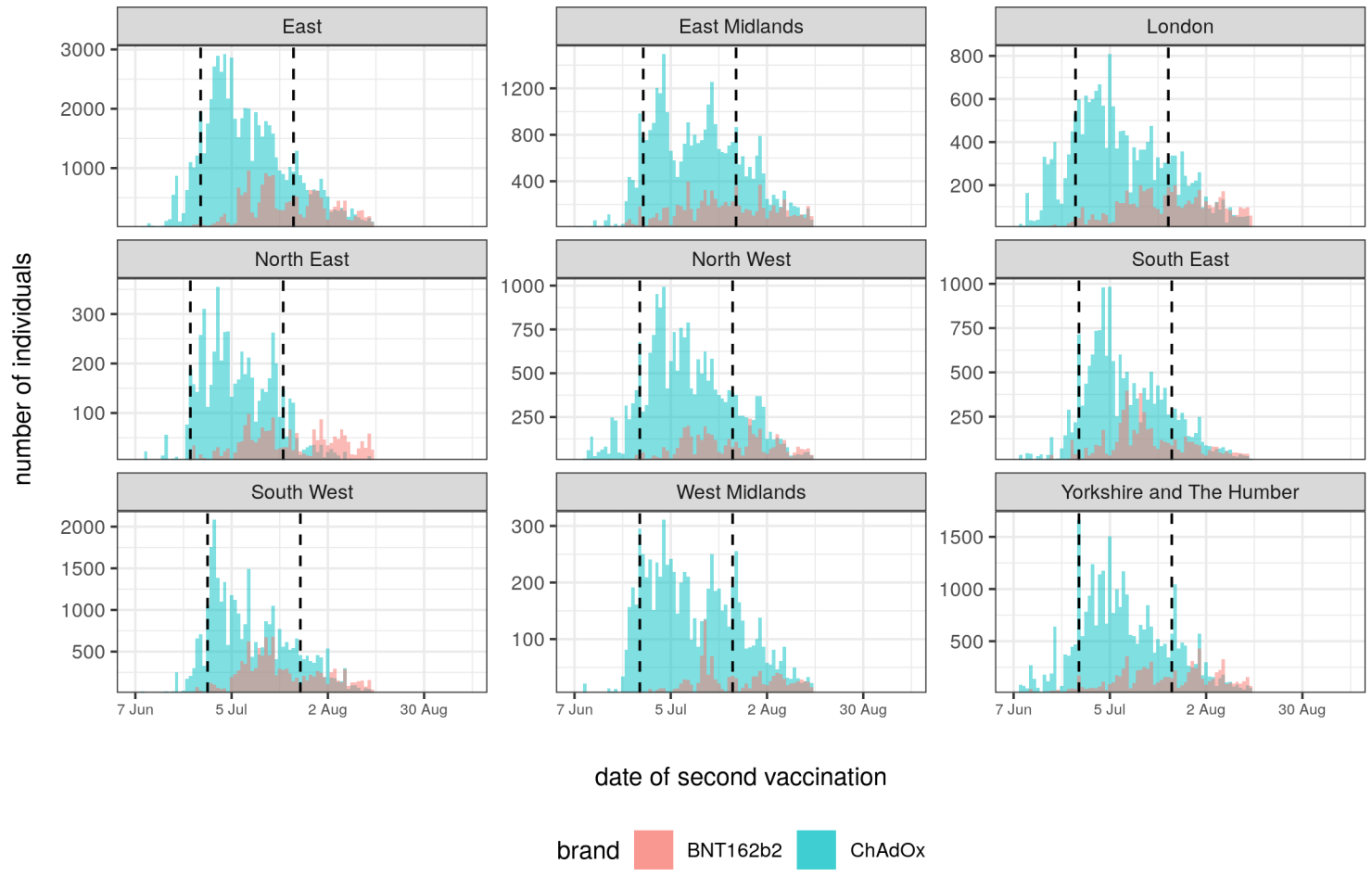
Supplementary Figure 11: Second vaccination period for JCVI group 9

JCVI group 10; eligible from 2021-04-13
Age range: 45 - 49 years



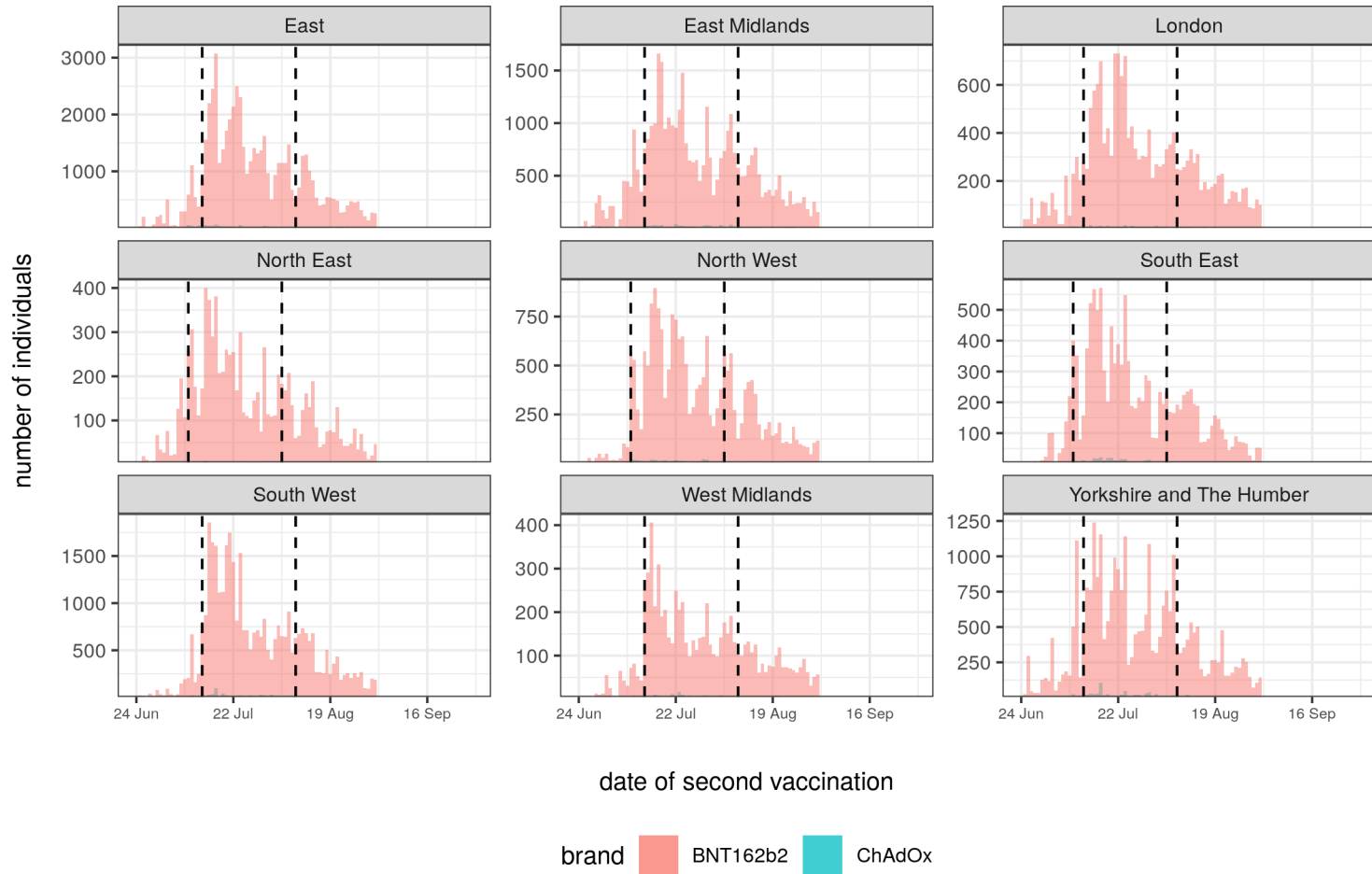
Supplementary Figure 12: Second vaccination period for JCVI group 10 and aged 45-49 years

JCVI group 10; eligible from 2021-04-26
Age range: 40 - 44 years



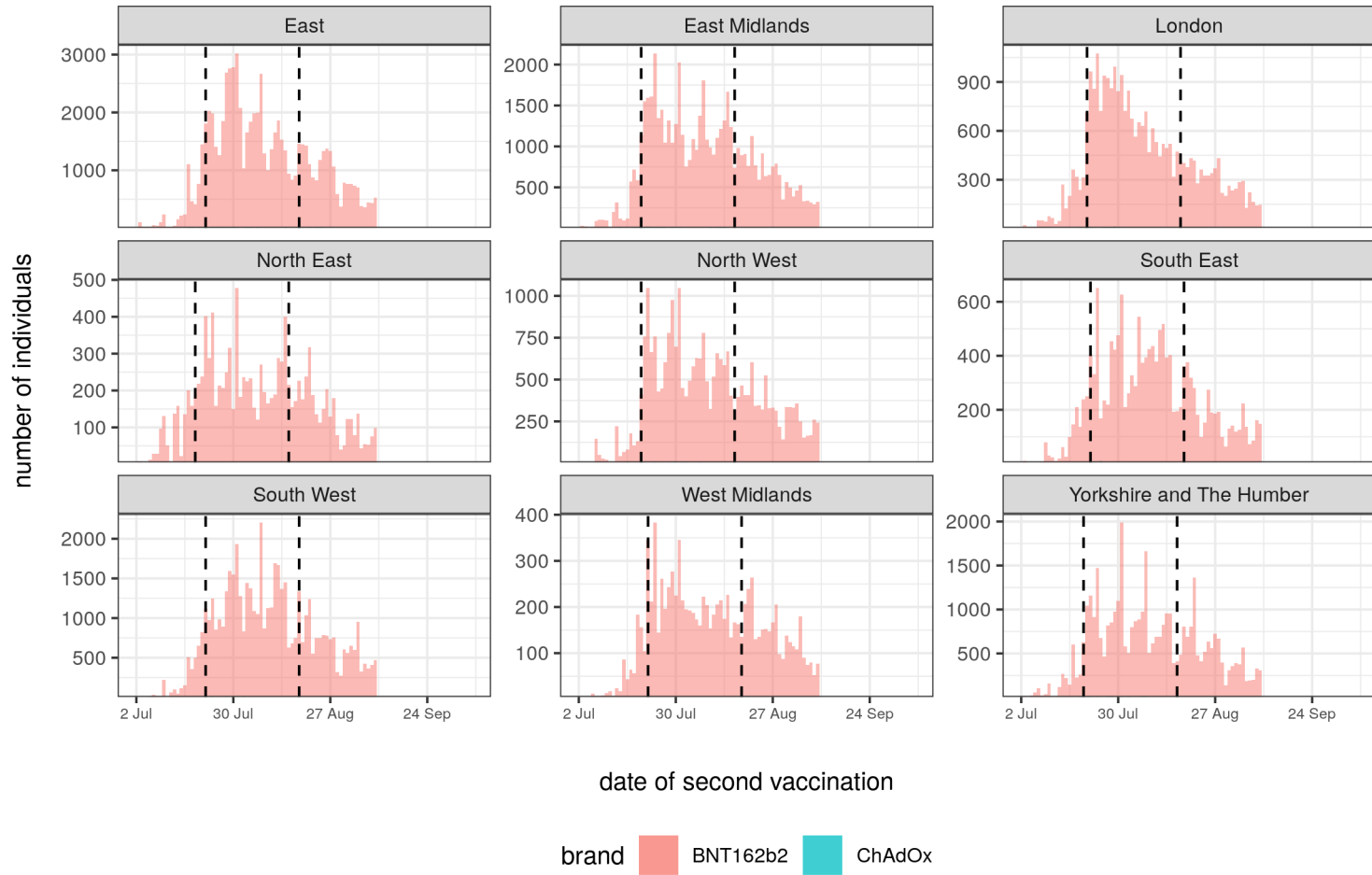
Supplementary Figure 13: Second vaccination period for JCVI group 10 and aged 40-44 years

JCVI group 11; eligible from 2021-05-13
Age range: 36 - 39 years



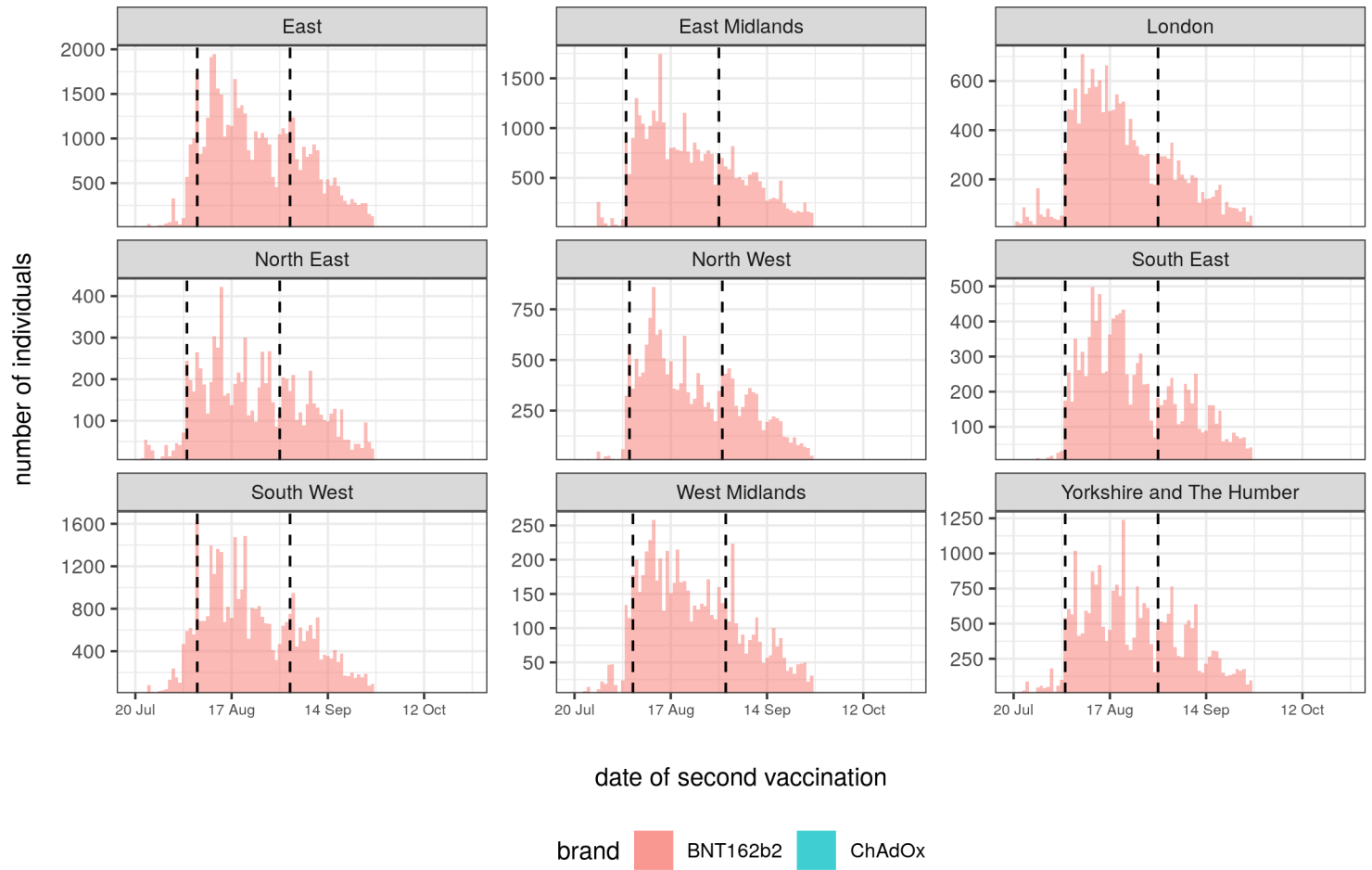
Supplementary Figure 14: Second vaccination period for JCVI group 11 and aged 36-39 years

JCVI group 11; eligible from 2021-05-21
Age range: 30 - 35 years



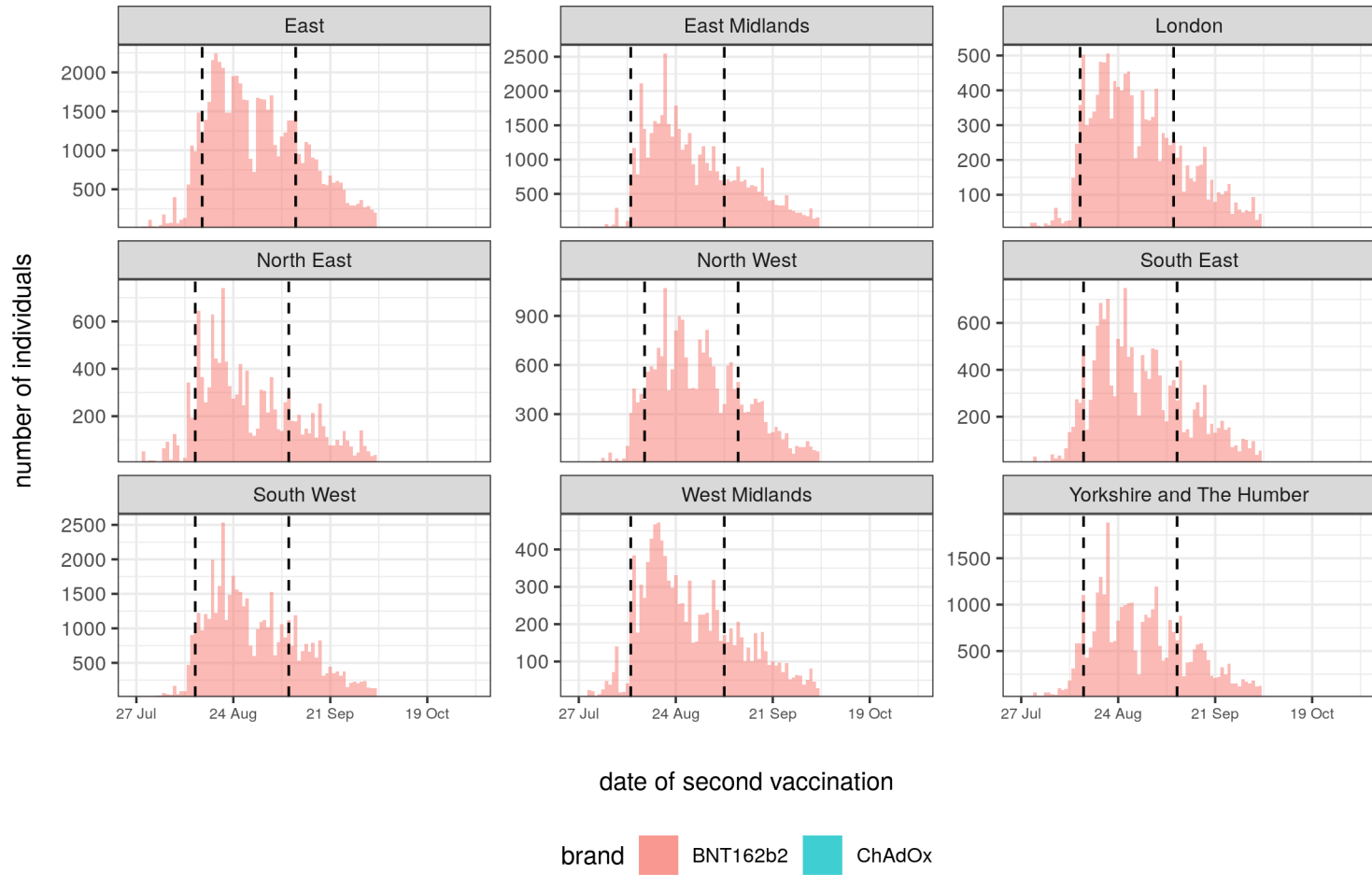
Supplementary Figure 15: Second vaccination period for JCVI group 11 and aged 30-35 years

JCVI group 12; eligible from 2021-06-08
Age range: 25 - 29 years

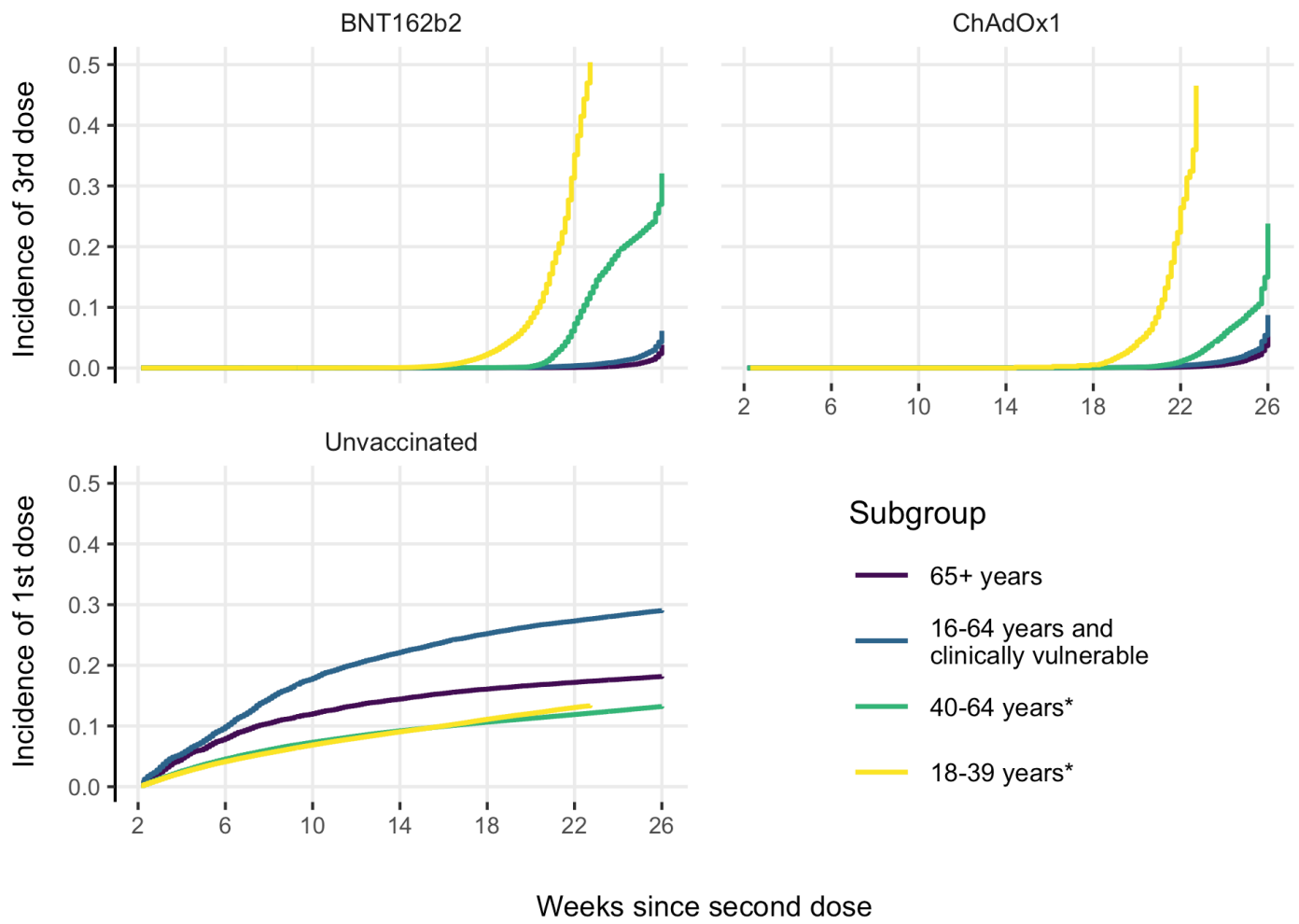


Supplementary Figure 16: Second vaccination period for JCVI group 12 and aged 25-29 years

JCVI group 12; eligible from 2021-06-15
Age range: 18 - 24 years



Supplementary Figure 17: Second vaccination period for JCVI group 12 and aged 18-24 years



Supplementary Figure 18: Cumulative incidence of subsequent vaccination. *And not clinically vulnerable.

Supplementary Table 4: Additional characteristics summarised across groups.

Variable	Characteristic	65+ years			16-64 years and clinically vulnerable			40-64 years ^a			18-39 years ^a	
		BNT162b2	ChAdOx1	Unvaccinated	BNT162b2	ChAdOx1	Unvaccinated	BNT162b2	ChAdOx1	Unvaccinated	BNT162b2	Unvaccinated
	N	653,435	841,239	152,294	374,137	651,574	310,445	62,652	1,463,607	623,998	683,746	1,347,251
Region	East	126,284 (19%)	197,728 (24%)	33,748 (22%)	81,599 (22%)	151,537 (23%)	63,686 (21%)	13,490 (22%)	375,750 (26%)	139,558 (22%)	164,199 (24%)	299,336 (22%)
	East Midlands	129,644 (20%)	141,026 (17%)	23,292 (15%)	64,627 (17%)	133,576 (21%)	53,088 (17%)	11,747 (19%)	247,775 (17%)	95,693 (15%)	118,456 (17%)	220,567 (16%)
	London	23,473 (4%)	16,323 (2%)	21,195 (14%)	14,685 (4%)	28,210 (4%)	35,338 (11%)	3,612 (6%)	63,552 (4%)	105,658 (17%)	52,990 (8%)	194,521 (14%)
	North East	36,361 (6%)	42,745 (5%)	6,271 (4%)	19,075 (5%)	32,567 (5%)	16,697 (5%)	1,742 (3%)	63,202 (4%)	25,191 (4%)	26,886 (4%)	61,902 (5%)
	North West	70,496 (11%)	90,452 (11%)	10,092 (7%)	45,305 (12%)	59,300 (9%)	24,342 (8%)	6,420 (10%)	147,555 (10%)	39,823 (6%)	59,547 (9%)	88,943 (7%)
	South East	43,996 (7%)	62,863 (7%)	10,265 (7%)	20,694 (6%)	43,310 (7%)	16,254 (5%)	5,793 (9%)	101,695 (7%)	37,424 (6%)	38,262 (6%)	78,179 (6%)
	South West	115,730 (18%)	142,787 (17%)	18,816 (12%)	63,056 (17%)	89,574 (14%)	29,691 (10%)	12,724 (20%)	231,862 (16%)	61,391 (10%)	118,253 (17%)	124,764 (9%)
	West Midlands	17,664 (3%)	25,822 (3%)	8,348 (5%)	14,083 (4%)	26,342 (4%)	19,612 (6%)	1,334 (2%)	39,455 (3%)	31,342 (5%)	23,183 (3%)	76,399 (6%)
	Yorkshire and The Humber	89,787 (14%)	121,493 (14%)	20,267 (13%)	51,013 (14%)	87,158 (13%)	51,737 (17%)	5,790 (9%)	192,761 (13%)	87,918 (14%)	81,970 (12%)	202,640 (15%)
JCVI group	02	228,980 (35%)	26,901 (3%)	32,978 (22%)	-	-	-	-	-	-	-	-
	03	42,926 (7%)	27,812 (3%)	26,790 (18%)	-	-	-	-	-	-	-	-
	04	289,508 (44%)	559,548 (67%)	42,337 (28%)	63,465 (17%)	132,777 (20%)	31,316 (10%)	-	-	-	-	-
	05	92,021 (14%)	226,978 (27%)	50,189 (33%)	-	-	-	-	-	-	-	-
	06	-	-	-	310,672 (83%)	518,797 (80%)	279,129 (90%)	-	-	-	-	-
	07	-	-	-	-	-	-	8,656 (14%)	344,277 (24%)	52,791 (8%)	-	-
	08	-	-	-	-	-	-	4,158 (7%)	452,092 (31%)	84,346 (14%)	-	-
	09	-	-	-	-	-	-	3,319 (5%)	301,770 (21%)	113,437 (18%)	-	-
	10	-	-	-	-	-	-	46,519 (74%)	365,468 (25%)	373,424 (60%)	-	-
	11	-	-	-	-	-	-	-	-	-	355,857 (52%)	672,588 (50%)
	12	-	-	-	-	-	-	-	-	-	327,889 (48%)	674,663 (50%)
Resident in long-term residential home	yes	213 (0%)	351 (0%)	84 (0%)	669 (0%)	2,494 (0%)	1,005 (0%)	- (-%)	85 (0%)	146 (0%)	17 (0%)	238 (0%)
History of	Chronic heart disease	202,268 (31%)	197,000 (23%)	32,936 (22%)	88,479 (24%)	146,997 (23%)	54,064 (17%)	107 (0%)	2,819 (0%)	766 (0%)	263 (0%)	673 (0%)
	Chronic kidney disease	114,885 (18%)	81,160 (10%)	16,899 (11%)	21,853 (6%)	33,314 (5%)	9,522 (3%)	18 (0%)	483 (0%)	97 (0%)	25 (0%)	57 (0%)
	Chronic liver disease	19,282 (3%)	28,202 (3%)	4,264 (3%)	28,863 (8%)	62,366 (10%)	34,884 (11%)	77 (0%)	1,384 (0%)	481 (0%)	365 (0%)	522 (0%)
	Chronic neurological disease	72,106 (11%)	70,779 (8%)	13,421 (9%)	59,813 (16%)	103,887 (16%)	50,922 (16%)	30 (0%)	765 (0%)	239 (0%)	191 (0%)	404 (0%)
	Chronic respiratory disease	69,405 (11%)	79,746 (9%)	11,678 (8%)	31,628 (8%)	56,703 (9%)	18,697 (6%)	21 (0%)	712 (0%)	227 (0%)	78 (0%)	140 (0%)
	Diabetes	119,012 (18%)	138,583 (16%)	26,295 (17%)	126,618 (34%)	186,286 (29%)	70,472 (23%)	143 (0%)	3,763 (0%)	1,076 (0%)	762 (0%)	2,593 (0%)
	Immunosuppression	35,830 (5%)	43,211 (5%)	4,728 (3%)	43,745 (12%)	75,818 (12%)	26,228 (8%)	27 (0%)	797 (0%)	215 (0%)	243 (0%)	421 (0%)
	Learning disability	731 (0%)	1,382 (0%)	360 (0%)	12,770 (3%)	23,376 (4%)	11,499 (4%)	- (-%)	29 (0%)	7 (0%)	61 (0%)	113 (0%)
	Serious mental illness	5,543 (1%)	8,917 (1%)	3,588 (2%)	17,147 (5%)	32,165 (5%)	32,580 (10%)	81 (0%)	2,362 (0%)	2,517 (0%)	279 (0%)	2,135 (0%)
Pregnancy	yes	- (-%)	- (-%)	- (-%)	751 (0%)	1,844 (0%)	10,509 (3%)	305 (0%)	298 (0%)	1,776 (0%)	8,463 (1%)	43,354 (3%)
Housebound	yes	8,430 (1%)	14,878 (2%)	5,797 (4%)	1,617 (0%)	6,270 (1%)	1,744 (1%)	6 (0%)	319 (0%)	334 (0%)	37 (0%)	178 (0%)

^a And not clinically vulnerable

Supplementary Table 5: Event counts during each comparison period.

Outcome	Weeks since 2nd dose	65+ years			16-64 years and clinically vulnerable			40-64 years ^a			18-39 years ^a	
		BNT162b2	ChAdOx1	Unvaccinated	BNT162b2	ChAdOx1	Unvaccinated	BNT162b2	ChAdOx1	Unvaccinated	BNT162b2	Unvaccinated
COVID-19 hospitalisation	3-6	27 / 50,048	34 / 64,444	76 / 11,499	- / 28,664	27 / 49,918	166 / 23,652	- / 4,800	59 / 112,139	534 / 47,422	13 / 52,239	727 / 102,580
	7-10	24 / 50,151	77 / 64,331	96 / 10,608	27 / 28,621	157 / 49,830	437 / 21,235	- / 4,794	110 / 111,997	569 / 45,219	26 / 51,904	554 / 97,782
	11-14	93 / 50,034	236 / 64,198	182 / 9,955	61 / 28,577	304 / 49,730	633 / 19,171	- / 4,787	114 / 111,860	539 / 43,406	32 / 51,624	514 / 93,406
	15-18	230 / 49,897	431 / 64,048	275 / 9,655	108 / 28,525	395 / 49,614	505 / 18,087	- / 4,779	171 / 111,714	536 / 42,578	29 / 41,176	384 / 66,786
	19-22	325 / 49,748	558 / 63,883	339 / 9,282	97 / 28,461	400 / 49,480	433 / 17,207	- / 4,567	196 / 110,950	439 / 38,587	19 / 12,745	129 / 21,855
	23-26	488 / 49,554	612 / 63,639	360 / 9,149	132 / 28,307	495 / 49,180	416 / 16,670	- / 1,783	235 / 94,138	311 / 25,541	- / 50	- / 552
	Total	1,187 / 299,431	1,948 / 384,543	1,328 / 60,148	425 / 171,155	1,778 / 297,753	2,590 / 116,023	- / 25,509	885 / 652,799	2,928 / 242,754	119 / 209,736	2,308 / 382,960
COVID-19 death	3-6	6 / 50,051	- / 64,446	21 / 11,506	- / 28,665	- / 49,920	9 / 23,661	- / 4,800	- / 112,144	14 / 47,459	- / 52,241	6 / 102,680
	7-10	- / 50,155	- / 64,336	21 / 10,619	- / 28,623	- / 49,838	29 / 21,268	- / 4,794	- / 112,009	28 / 45,294	- / 51,907	11 / 97,921
	11-14	9 / 50,041	28 / 64,214	41 / 9,975	- / 28,582	21 / 49,754	66 / 19,239	- / 4,787	- / 111,880	28 / 43,524	- / 51,629	- / 93,579
	15-18	26 / 49,915	70 / 64,085	72 / 9,686	8 / 28,536	31 / 49,664	56 / 18,190	- / 4,780	6 / 111,744	38 / 42,721	- / 41,182	8 / 66,936
	19-22	84 / 49,782	105 / 63,953	96 / 9,333	15 / 28,479	34 / 49,558	60 / 17,334	- / 4,567	9 / 110,993	30 / 38,746	- / 12,747	- / 21,912
	23-26	103 / 49,611	90 / 63,743	115 / 9,212	14 / 28,333	41 / 49,288	54 / 16,820	- / 1,783	14 / 94,188	28 / 25,669	- / 50	- / 554
	Total	228 / 299,555	293 / 384,777	366 / 60,331	37 / 171,219	127 / 298,021	274 / 116,511	- / 25,511	29 / 652,958	166 / 243,413	- / 209,756	25 / 383,583
Positive SARS-CoV-2 test	3-6	90 / 50,040	203 / 64,430	130 / 11,492	150 / 28,653	1,391 / 49,863	1,668 / 23,578	224 / 4,774	8,831 / 111,589	5,821 / 46,951	2,659 / 51,802	16,168 / 100,318
	7-10	275 / 50,134	1,111 / 64,281	230 / 10,596	1,420 / 28,567	5,455 / 49,527	3,502 / 21,002	384 / 4,744	13,301 / 110,568	5,892 / 44,382	4,016 / 51,222	13,908 / 94,552
	11-14	865 / 49,979	2,784 / 64,011	382 / 9,935	2,395 / 28,371	7,680 / 48,938	4,107 / 18,708	689 / 4,700	17,268 / 109,314	5,567 / 42,210	7,139 / 50,540	15,838 / 89,372
	15-18	1,860 / 49,755	4,560 / 63,609	519 / 9,616	3,136 / 28,112	8,295 / 48,220	3,219 / 17,424	991 / 4,625	20,204 / 107,723	5,843 / 41,029	11,547 / 39,747	13,600 / 63,229
	19-22	2,368 / 49,462	5,081 / 63,107	632 / 9,228	3,385 / 27,815	9,801 / 47,461	2,702 / 16,398	1,350 / 4,342	28,033 / 105,257	5,795 / 36,894	6,159 / 12,006	4,975 / 20,530
	23-26	3,474 / 49,084	7,337 / 62,463	649 / 9,075	5,162 / 27,344	12,691 / 46,330	3,059 / 15,713	400 / 1,705	26,822 / 88,321	4,196 / 24,387	33 / 45	157 / 514
	Total	8,932 / 298,454	21,076 / 381,899	2,542 / 59,943	15,648 / 168,863	45,313 / 290,339	18,257 / 112,823	4,038 / 24,891	114,459 / 632,772	33,114 / 235,852	31,553 / 205,362	64,646 / 368,515
Non-COVID-19 death	3-6	745 / 50,051	681 / 64,446	441 / 11,506	127 / 28,665	198 / 49,920	145 / 23,661	- / 4,800	82 / 112,144	80 / 47,459	- / 52,241	19 / 102,680
	7-10	982 / 50,155	782 / 64,336	390 / 10,619	128 / 28,623	247 / 49,838	149 / 21,268	- / 4,794	104 / 112,009	67 / 45,294	- / 51,907	8 / 97,921
	11-14	1,065 / 50,041	855 / 64,214	331 / 9,975	144 / 28,582	288 / 49,754	130 / 19,239	- / 4,787	114 / 111,880	63 / 43,524	- / 51,629	15 / 93,579
	15-18	1,143 / 49,915	947 / 64,085	328 / 9,686	153 / 28,536	297 / 49,664	127 / 18,190	- / 4,780	143 / 111,744	50 / 42,721	- / 41,182	8 / 66,936
	19-22	1,175 / 49,782	962 / 63,953	287 / 9,333	137 / 28,479	289 / 49,558	87 / 17,334	9 / 4,567	146 / 110,993	66 / 38,746	- / 12,747	6 / 21,912
	23-26	1,336 / 49,611	1,053 / 63,743	302 / 9,212	174 / 28,333	313 / 49,288	96 / 16,820	- / 1,783	145 / 94,188	42 / 25,669	- / 50	- / 554
	Total	6,446 / 299,555	5,280 / 384,777	2,079 / 60,331	863 / 171,219	1,632 / 298,021	734 / 116,511	9 / 25,511	734 / 652,958	368 / 243,413	- / 209,756	56 / 383,583
Any SARS-CoV-2 test	3-6	52,539 / 47,779	81,127 / 60,725	6,549 / 10,936	48,931 / 26,275	91,551 / 45,529	20,732 / 21,914	9,077 / 4,363	239,878 / 100,297	34,921 / 44,356	115,954 / 47,006	99,519 / 93,091
	7-10	59,197 / 47,528	90,700 / 60,225	6,159 / 10,077	60,373 / 25,822	108,393 / 44,579	21,682 / 19,382	10,528 / 4,290	247,732 / 99,182	34,385 / 41,854	116,457 / 46,231	84,765 / 88,159
	11-14	64,240 / 47,115	96,581 / 59,616	5,876 / 9,458	57,568 / 25,691	102,043 / 44,464	20,554 / 17,267	11,036 / 4,220	248,568 / 98,644	32,726 / 39,764	113,612 / 45,858	77,169 / 84,177
	15-18	64,891 / 46,911	96,184 / 59,417	5,987 / 9,142	59,454 / 25,598	107,656 / 43,692	19,349 / 16,014	11,396 / 4,139	272,107 / 95,703	31,167 / 38,708	112,953 / 36,010	60,931 / 60,425
	19-22	69,277 / 46,506	106,642 / 58,540	5,927 / 8,758	64,945 / 24,950	114,891 / 42,572	17,094 / 15,096	12,180 / 3,873	279,888 / 93,366	28,563 / 35,009	53,658 / 10,806	23,726 / 19,987
	23-26	76,071 / 45,885	116,065 / 57,584	5,934 / 8,609	65,995 / 24,474	113,673 / 41,560	15,949 / 14,542	5,479 / 1,541	248,893 / 78,716	21,113 / 23,346	412 / 44	897 / 513
	Total	386,215 / 281,723	587,299 / 356,106	36,432 / 56,981	357,266 / 152,810	638,207 / 262,397	115,360 / 104,215	59,696 / 22,428	1,537,066 / 565,909	182,875 / 223,036	513,046 / 185,955	347,007 / 346,351

^a And not clinically vulnerable

Supplementary Table 6: Unadjusted hazard ratios for each comparison period.

Outcome	Weeks since 2nd dose	65+ years			16-64 years and clinically vulnerable			40-64 years ^a			18-39 years ^a
		BNT162b2 vs unvaccinated	ChAdOx1 vs unvaccinated	BNT162b2 vs ChAdOx1	BNT162b2 vs unvaccinated	ChAdOx1 vs unvaccinated	BNT162b2 vs ChAdOx1	BNT162b2 vs unvaccinated	ChAdOx1 vs unvaccinated	BNT162b2 vs ChAdOx1	BNT162b2 vs unvaccinated
COVID-19 hospitalisation	3-6	0.08 (0.05-0.14)	0.13 (0.08-0.20)	0.42 (0.23-0.75)	-	0.10 (0.07-0.15)	-	-	0.06 (0.04-0.08)	-	0.03 (0.02-0.06)
	7-10	0.06 (0.04-0.10)	0.12 (0.09-0.16)	0.45 (0.29-0.71)	0.06 (0.04-0.08)	0.14 (0.12-0.17)	0.37 (0.25-0.56)	-	0.06 (0.05-0.07)	-	0.09 (0.06-0.13)
	11-14	0.11 (0.08-0.14)	0.15 (0.12-0.18)	0.58 (0.45-0.74)	0.06 (0.05-0.08)	0.18 (0.16-0.21)	0.37 (0.28-0.48)	-	0.06 (0.05-0.07)	-	0.10 (0.07-0.14)
	15-18	0.13 (0.11-0.16)	0.18 (0.16-0.21)	0.58 (0.49-0.68)	0.12 (0.10-0.14)	0.26 (0.23-0.29)	0.50 (0.40-0.61)	-	0.11 (0.09-0.13)	-	0.11 (0.08-0.16)
	19-22	0.15 (0.13-0.17)	0.23 (0.21-0.27)	0.55 (0.48-0.63)	0.13 (0.11-0.17)	0.30 (0.26-0.33)	0.49 (0.40-0.61)	-	0.13 (0.11-0.15)	-	0.22 (0.14-0.36)
	23-26	0.21 (0.18-0.24)	0.28 (0.24-0.32)	0.73 (0.64-0.82)	0.17 (0.14-0.20)	0.35 (0.31-0.39)	0.48 (0.40-0.58)	-	0.17 (0.14-0.20)	-	-
COVID-19 death	3-6	0.04 (0.02-0.12)	-	-	-	-	-	-	-	-	-
	7-10	-	-	-	-	-	-	-	-	-	-
	11-14	0.06 (0.03-0.12)	0.10 (0.06-0.15)	0.50 (0.22-1.12)	-	0.13 (0.08-0.20)	-	-	-	-	-
	15-18	0.06 (0.04-0.10)	0.14 (0.10-0.19)	0.34 (0.20-0.57)	0.07 (0.04-0.16)	0.16 (0.10-0.23)	0.45 (0.19-1.04)	-	0.04 (0.02-0.09)	-	-
	19-22	0.11 (0.08-0.15)	0.14 (0.11-0.19)	0.65 (0.48-0.87)	0.15 (0.08-0.27)	0.17 (0.11-0.25)	0.92 (0.49-1.71)	-	0.06 (0.03-0.13)	-	-
	23-26	0.12 (0.09-0.16)	0.17 (0.13-0.23)	0.68 (0.50-0.91)	0.13 (0.07-0.24)	0.21 (0.14-0.31)	0.62 (0.34-1.12)	-	0.09 (0.05-0.18)	-	-
Positive SARS-CoV-2 test	3-6	0.22 (0.16-0.29)	0.55 (0.44-0.69)	0.62 (0.47-0.81)	0.17 (0.14-0.20)	0.60 (0.56-0.65)	0.34 (0.28-0.40)	0.34 (0.29-0.39)	0.93 (0.90-0.96)	0.36 (0.32-0.41)	0.31 (0.30-0.33)
	7-10	0.41 (0.34-0.48)	0.78 (0.70-0.86)	0.54 (0.48-0.62)	0.30 (0.29-0.32)	0.63 (0.61-0.65)	0.49 (0.46-0.51)	0.58 (0.52-0.64)	1.10 (1.07-1.13)	0.48 (0.43-0.53)	0.53 (0.51-0.55)
	11-14	0.50 (0.45-0.55)	0.83 (0.77-0.89)	0.61 (0.57-0.66)	0.38 (0.36-0.40)	0.74 (0.72-0.77)	0.57 (0.55-0.60)	0.94 (0.86-1.01)	1.44 (1.40-1.48)	0.54 (0.50-0.59)	0.77 (0.75-0.79)
	15-18	0.67 (0.62-0.73)	1.02 (0.96-1.08)	0.70 (0.66-0.73)	0.54 (0.51-0.56)	0.93 (0.90-0.97)	0.63 (0.60-0.65)	1.22 (1.14-1.31)	1.80 (1.76-1.84)	0.62 (0.58-0.66)	1.25 (1.22-1.28)
	19-22	0.75 (0.70-0.81)	1.21 (1.14-1.28)	0.70 (0.67-0.73)	0.77 (0.74-0.81)	1.18 (1.14-1.22)	0.67 (0.64-0.70)	1.54 (1.45-1.64)	2.12 (2.08-2.17)	0.66 (0.63-0.70)	1.87 (1.80-1.93)
	23-26	0.99 (0.92-1.07)	1.46 (1.36-1.56)	0.76 (0.73-0.80)	0.91 (0.87-0.95)	1.35 (1.31-1.40)	0.69 (0.67-0.71)	1.35 (1.21-1.51)	2.43 (2.36-2.49)	0.60 (0.55-0.67)	2.18 (1.53-3.11)
Non-COVID-19 death	3-6	0.30 (0.27-0.34)	0.57 (0.49-0.65)	0.61 (0.54-0.70)	0.62 (0.48-0.79)	0.52 (0.43-0.64)	1.21 (0.96-1.51)	-	0.31 (0.22-0.43)	-	-
	7-10	0.39 (0.35-0.43)	0.63 (0.56-0.71)	0.71 (0.64-0.78)	0.58 (0.46-0.73)	0.58 (0.49-0.70)	1.00 (0.81-1.23)	-	0.38 (0.29-0.51)	-	-
	11-14	0.45 (0.41-0.50)	0.67 (0.60-0.76)	0.72 (0.66-0.79)	0.63 (0.51-0.79)	0.68 (0.57-0.80)	0.91 (0.75-1.11)	-	0.52 (0.39-0.68)	-	-
	15-18	0.49 (0.44-0.54)	0.74 (0.66-0.83)	0.69 (0.63-0.75)	0.73 (0.59-0.90)	0.84 (0.70-0.99)	1.02 (0.84-1.23)	-	0.51 (0.39-0.66)	-	-
	19-22	0.51 (0.47-0.57)	0.79 (0.70-0.89)	0.70 (0.64-0.76)	0.67 (0.53-0.84)	0.77 (0.64-0.93)	0.84 (0.69-1.02)	1.18 (0.56-2.51)	0.53 (0.41-0.69)	2.70 (1.30-5.60)	-
	23-26	0.58 (0.52-0.65)	0.86 (0.75-0.99)	0.77 (0.71-0.85)	0.97 (0.75-1.24)	0.99 (0.80-1.22)	1.04 (0.87-1.25)	-	0.53 (0.40-0.71)	-	-
Any SARS-CoV-2 test	3-6	1.17 (1.14-1.19)	1.16 (1.14-1.18)	0.72 (0.72-0.73)	1.48 (1.46-1.50)	1.38 (1.37-1.40)	0.70 (0.69-0.71)	2.36 (2.30-2.42)	1.77 (1.75-1.78)	0.77 (0.75-0.79)	2.00 (1.99-2.02)
	7-10	1.72 (1.70-1.76)	1.90 (1.87-1.93)	0.88 (0.87-0.89)	1.89 (1.87-1.92)	1.89 (1.87-1.91)	0.95 (0.94-0.96)	2.70 (2.64-2.77)	2.84 (2.82-2.86)	0.84 (0.82-0.86)	2.55 (2.53-2.57)
	11-14	2.14 (2.10-2.18)	2.64 (2.59-2.69)	0.92 (0.91-0.93)	2.00 (1.98-2.03)	2.08 (2.06-2.11)	1.02 (1.01-1.03)	3.02 (2.95-3.08)	3.43 (3.40-3.46)	0.85 (0.83-0.86)	2.82 (2.80-2.84)
	15-18	2.62 (2.56-2.67)	3.66 (3.58-3.75)	0.93 (0.92-0.94)	1.93 (1.90-1.95)	2.22 (2.19-2.25)	0.97 (0.96-0.98)	3.30 (3.22-3.37)	4.49 (4.45-4.54)	0.86 (0.85-0.88)	3.46 (3.43-3.49)
	19-22	3.46 (3.37-3.55)	5.60 (5.45-5.76)	0.94 (0.93-0.94)	2.38 (2.35-2.42)	2.90 (2.85-2.94)	0.99 (0.98-1.00)	3.63 (3.55-3.71)	6.84 (6.75-6.93)	0.86 (0.84-0.88)	5.47 (5.39-5.55)
	23-26	5.53 (5.36-5.70)	10.09 (9.75-10.45)	1.07 (1.06-1.08)	3.43 (3.37-3.50)	4.50 (4.42-4.59)	1.08 (1.07-1.09)	5.03 (4.86-5.21)	13.46 (13.24-13.69)	1.10 (1.07-1.14)	10.85 (9.75-12.07)

^a And not clinically vulnerable

Supplementary Table 7: Adjusted hazard ratios for each comparison period.

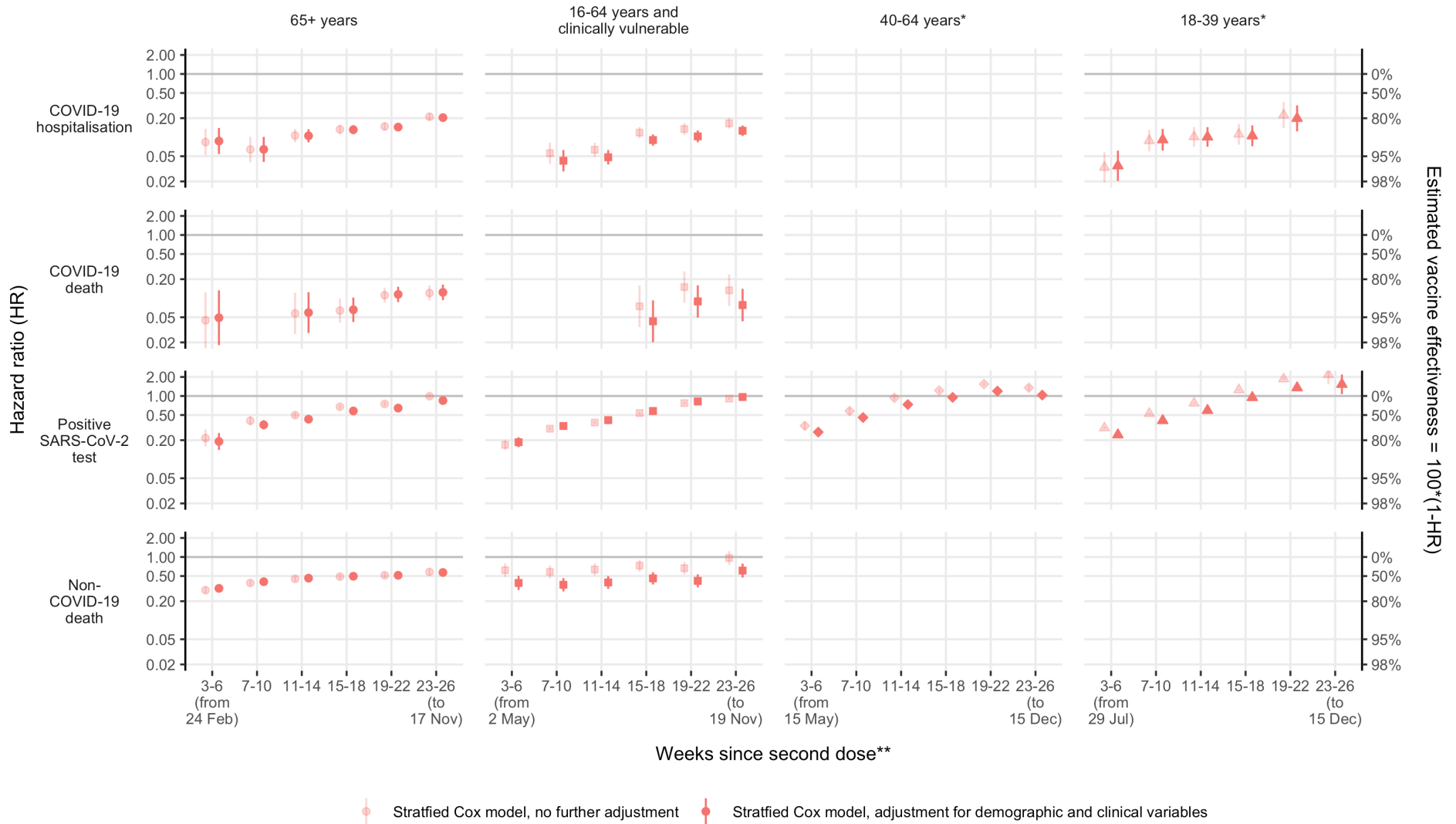
Outcome	Weeks since 2nd dose	65+ years			16-64 years and clinically vulnerable			40-64 years ^a			18-39 years ^a
		BNT162b2 vs unvaccinated	ChAdOx1 vs unvaccinated	BNT162b2 vs ChAdOx1	BNT162b2 vs unvaccinated	ChAdOx1 vs unvaccinated	BNT162b2 vs ChAdOx1	BNT162b2 vs unvaccinated	ChAdOx1 vs unvaccinated	BNT162b2 vs ChAdOx1	BNT162b2 vs unvaccinated
COVID-19 hospitalisation	3-6	0.09 (0.05-0.14)	0.13 (0.08-0.20)	0.44 (0.25-0.78)	-	0.08 (0.05-0.12)	-	-	0.05 (0.04-0.07)	-	0.04 (0.02-0.06)
	7-10	0.06 (0.04-0.10)	0.12 (0.09-0.16)	0.45 (0.29-0.71)	0.04 (0.03-0.06)	0.11 (0.09-0.13)	0.37 (0.24-0.55)	-	0.05 (0.04-0.06)	-	0.09 (0.06-0.14)
	11-14	0.11 (0.08-0.13)	0.15 (0.12-0.18)	0.59 (0.46-0.75)	0.05 (0.04-0.06)	0.13 (0.12-0.15)	0.36 (0.28-0.48)	-	0.05 (0.04-0.06)	-	0.10 (0.07-0.14)
	15-18	0.13 (0.11-0.16)	0.18 (0.15-0.20)	0.59 (0.50-0.70)	0.09 (0.07-0.11)	0.19 (0.17-0.21)	0.49 (0.40-0.61)	-	0.10 (0.08-0.11)	-	0.11 (0.07-0.15)
	19-22	0.14 (0.12-0.17)	0.22 (0.19-0.25)	0.56 (0.49-0.65)	0.10 (0.08-0.13)	0.22 (0.19-0.25)	0.49 (0.39-0.60)	-	0.11 (0.09-0.13)	-	0.20 (0.12-0.32)
	23-26	0.20 (0.18-0.24)	0.26 (0.23-0.30)	0.73 (0.65-0.83)	0.13 (0.10-0.15)	0.25 (0.22-0.29)	0.47 (0.39-0.57)	-	0.14 (0.12-0.17)	-	-
COVID-19 death	3-6	0.05 (0.02-0.13)	-	-	-	-	-	-	-	-	-
	7-10	-	-	-	-	-	-	-	-	-	-
	11-14	0.06 (0.03-0.12)	0.10 (0.06-0.16)	0.51 (0.23-1.12)	-	0.08 (0.05-0.12)	-	-	-	-	-
	15-18	0.07 (0.04-0.10)	0.14 (0.10-0.20)	0.35 (0.21-0.58)	0.04 (0.02-0.09)	0.09 (0.06-0.14)	0.45 (0.19-1.05)	-	0.03 (0.01-0.08)	-	-
	19-22	0.11 (0.09-0.15)	0.14 (0.11-0.19)	0.67 (0.50-0.90)	0.09 (0.05-0.16)	0.10 (0.07-0.15)	0.91 (0.49-1.71)	-	0.06 (0.03-0.11)	-	-
	23-26	0.12 (0.09-0.16)	0.17 (0.12-0.23)	0.70 (0.53-0.94)	0.08 (0.04-0.14)	0.13 (0.08-0.19)	0.59 (0.32-1.07)	-	0.08 (0.04-0.16)	-	-
Positive SARS-CoV-2 test	3-6	0.19 (0.14-0.26)	0.47 (0.38-0.59)	0.62 (0.47-0.81)	0.19 (0.15-0.22)	0.66 (0.61-0.70)	0.35 (0.29-0.41)	0.27 (0.23-0.31)	0.79 (0.76-0.82)	0.37 (0.33-0.43)	0.24 (0.23-0.25)
	7-10	0.35 (0.30-0.41)	0.66 (0.59-0.73)	0.54 (0.47-0.62)	0.34 (0.32-0.36)	0.68 (0.66-0.71)	0.50 (0.47-0.53)	0.46 (0.41-0.51)	0.93 (0.90-0.95)	0.49 (0.44-0.54)	0.41 (0.40-0.42)
	11-14	0.43 (0.39-0.48)	0.70 (0.65-0.76)	0.61 (0.57-0.66)	0.42 (0.39-0.44)	0.81 (0.78-0.83)	0.59 (0.56-0.62)	0.73 (0.68-0.79)	1.21 (1.18-1.24)	0.56 (0.51-0.60)	0.59 (0.58-0.61)
	15-18	0.58 (0.53-0.63)	0.86 (0.80-0.91)	0.69 (0.66-0.73)	0.58 (0.55-0.61)	1.01 (0.97-1.04)	0.65 (0.62-0.67)	0.95 (0.89-1.02)	1.51 (1.47-1.54)	0.63 (0.59-0.67)	0.95 (0.92-0.97)
	19-22	0.64 (0.60-0.70)	1.01 (0.95-1.08)	0.70 (0.66-0.73)	0.82 (0.78-0.86)	1.26 (1.22-1.30)	0.69 (0.66-0.72)	1.19 (1.12-1.27)	1.77 (1.73-1.81)	0.67 (0.64-0.71)	1.35 (1.31-1.40)
	23-26	0.85 (0.78-0.92)	1.21 (1.13-1.30)	0.76 (0.73-0.79)	0.96 (0.92-1.01)	1.45 (1.40-1.50)	0.72 (0.69-0.74)	1.03 (0.93-1.15)	1.99 (1.94-2.05)	0.60 (0.55-0.67)	1.53 (1.07-2.18)
Non-COVID-19 death	3-6	0.32 (0.28-0.36)	0.48 (0.42-0.55)	0.79 (0.70-0.89)	0.39 (0.30-0.50)	0.35 (0.28-0.43)	1.21 (0.96-1.53)	-	0.34 (0.24-0.47)	-	-
	7-10	0.41 (0.37-0.45)	0.52 (0.46-0.59)	0.89 (0.81-0.98)	0.36 (0.29-0.46)	0.38 (0.32-0.46)	0.98 (0.79-1.20)	-	0.42 (0.32-0.56)	-	-
	11-14	0.46 (0.42-0.51)	0.55 (0.49-0.62)	0.91 (0.83-0.99)	0.40 (0.31-0.50)	0.44 (0.37-0.53)	0.89 (0.73-1.08)	-	0.57 (0.43-0.75)	-	-
	15-18	0.50 (0.45-0.55)	0.59 (0.53-0.67)	0.87 (0.80-0.95)	0.46 (0.37-0.58)	0.55 (0.46-0.66)	0.99 (0.82-1.19)	-	0.56 (0.43-0.73)	-	-
	19-22	0.51 (0.46-0.57)	0.63 (0.56-0.71)	0.88 (0.81-0.95)	0.42 (0.33-0.53)	0.51 (0.43-0.62)	0.81 (0.67-0.99)	1.10 (0.52-2.35)	0.58 (0.44-0.76)	2.67 (1.30-5.50)	-
	23-26	0.57 (0.51-0.64)	0.66 (0.58-0.76)	0.97 (0.89-1.05)	0.61 (0.47-0.79)	0.65 (0.52-0.80)	1.01 (0.84-1.20)	-	0.59 (0.44-0.79)	-	-
Any SARS-CoV-2 test	3-6	0.88 (0.87-0.90)	0.84 (0.82-0.85)	0.74 (0.73-0.75)	1.40 (1.38-1.42)	1.26 (1.25-1.28)	0.71 (0.71-0.72)	1.73 (1.69-1.78)	1.40 (1.39-1.41)	0.79 (0.77-0.81)	1.56 (1.55-1.58)
	7-10	1.29 (1.27-1.31)	1.34 (1.32-1.37)	0.90 (0.89-0.91)	1.76 (1.73-1.78)	1.70 (1.68-1.72)	0.96 (0.95-0.97)	1.96 (1.91-2.01)	2.18 (2.16-2.19)	0.86 (0.84-0.87)	1.94 (1.93-1.96)
	11-14	1.59 (1.55-1.62)	1.84 (1.80-1.88)	0.94 (0.93-0.95)	1.82 (1.79-1.85)	1.84 (1.82-1.86)	1.03 (1.02-1.04)	2.17 (2.12-2.23)	2.59 (2.57-2.61)	0.86 (0.84-0.88)	2.12 (2.10-2.14)
	15-18	1.92 (1.88-1.96)	2.51 (2.45-2.57)	0.94 (0.93-0.95)	1.73 (1.70-1.75)	1.94 (1.91-1.96)	0.98 (0.97-0.99)	2.35 (2.30-2.41)	3.31 (3.28-3.34)	0.87 (0.86-0.89)	2.54 (2.52-2.56)
	19-22	2.51 (2.44-2.57)	3.77 (3.66-3.87)	0.95 (0.94-0.96)	2.11 (2.08-2.14)	2.49 (2.46-2.53)	1.00 (0.99-1.01)	2.59 (2.53-2.65)	4.85 (4.79-4.91)	0.87 (0.85-0.89)	3.78 (3.73-3.84)
	23-26	3.94 (3.82-4.07)	6.59 (6.37-6.82)	1.08 (1.07-1.09)	2.99 (2.94-3.05)	3.80 (3.73-3.87)	1.09 (1.08-1.10)	3.43 (3.31-3.56)	8.95 (8.80-9.09)	1.08 (1.05-1.11)	7.05 (6.33-7.84)

^a And not clinically vulnerable

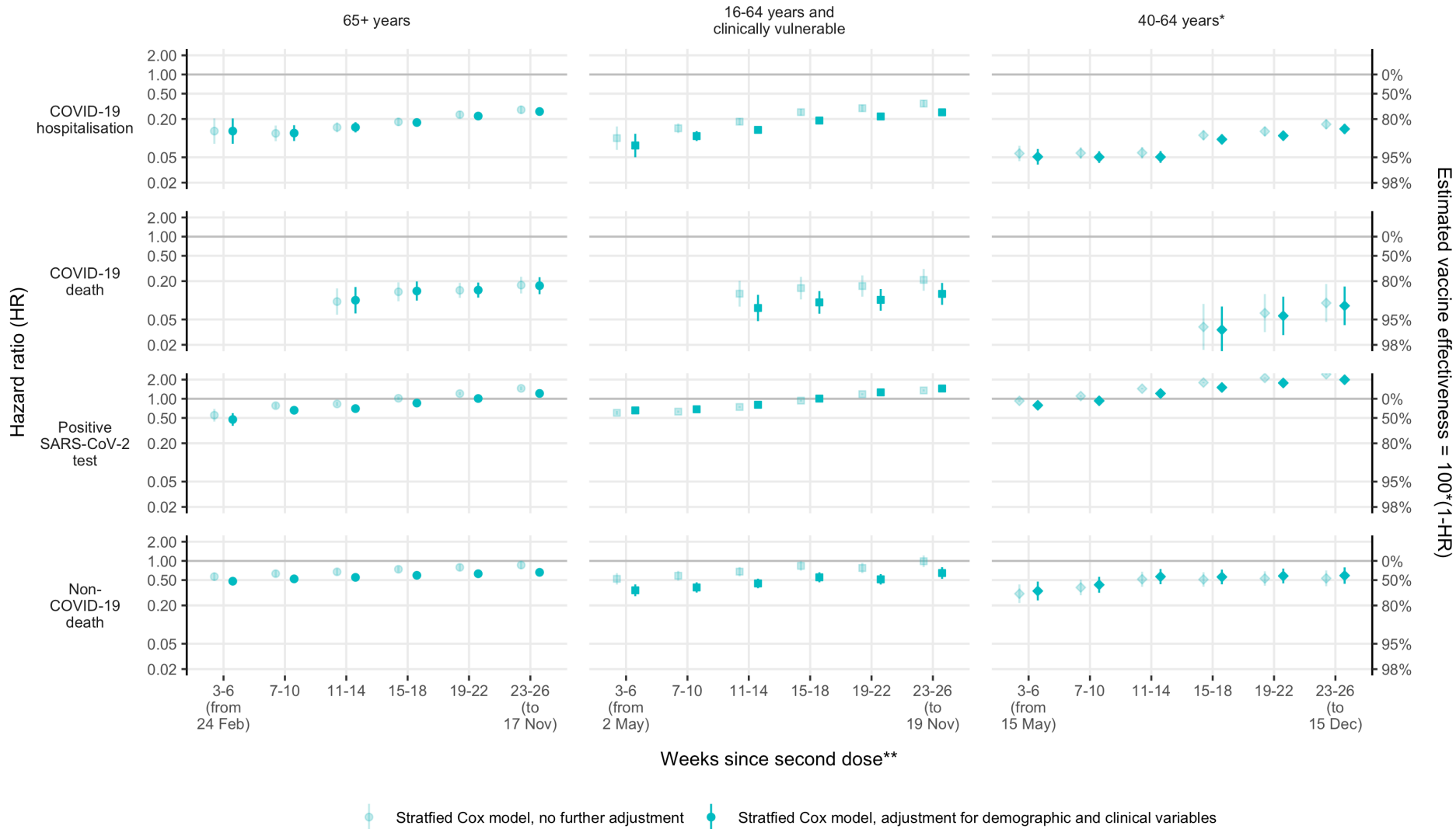
Supplementary Table 8: Ratio of adjusted hazard ratios for each comparison period.

Outcome	65+ years			16-64 years and clinically vulnerable			40-64 years ^a			18-39 years ^a		
	BNT162b2 vs unvaccinated	ChAdOx1 vs unvaccinated	BNT162b2 vs ChAdOx1	BNT162b2 vs unvaccinated	ChAdOx1 vs unvaccinated	BNT162b2 vs ChAdOx1	BNT162b2 vs unvaccinated	ChAdOx1 vs unvaccinated	BNT162b2 vs ChAdOx1	BNT162b2 vs unvaccinated	ChAdOx1 vs unvaccinated	BNT162b2 vs ChAdOx1
COVID-19 hospitalisation	1.23 (1.15-1.32)	1.20 (1.14-1.27)	1.09 (1.01-1.18)	1.34 (1.20-1.48)	1.25 (1.19-1.30)	1.07 (0.98-1.16)	-	1.27 (1.16-1.38)	-	1.39 (1.15-1.68)	-	-
COVID-19 death	1.26 (1.08-1.48)	1.16 (0.98-1.37)	1.23 (0.96-1.58)	1.30 (0.77-2.18)	1.18 (0.97-1.43)	1.10 (0.55-2.19)	-	1.53 (0.89-2.64)	-	-	-	-
Positive SARS-CoV-2 test	1.27 (1.20-1.34)	1.18 (1.15-1.21)	1.07 (1.04-1.10)	1.36 (1.29-1.43)	1.19 (1.16-1.22)	1.13 (1.07-1.19)	1.33 (1.18-1.49)	1.21 (1.19-1.24)	1.10 (1.04-1.17)	1.52 (1.47-1.58)	-	-
Non-COVID-19 death	1.11 (1.07-1.15)	1.07 (1.03-1.10)	1.02 (1.00-1.05)	1.08 (1.02-1.15)	1.13 (1.07-1.18)	0.97 (0.91-1.03)	-	1.11 (1.03-1.19)	-	-	-	-
Any SARS-CoV-2 test	1.32 (1.27-1.37)	1.48 (1.42-1.54)	1.06 (1.03-1.09)	1.13 (1.07-1.20)	1.21 (1.14-1.28)	1.06 (1.01-1.12)	1.13 (1.10-1.16)	1.41 (1.32-1.50)	1.05 (1.02-1.08)	1.32 (1.20-1.44)	-	-

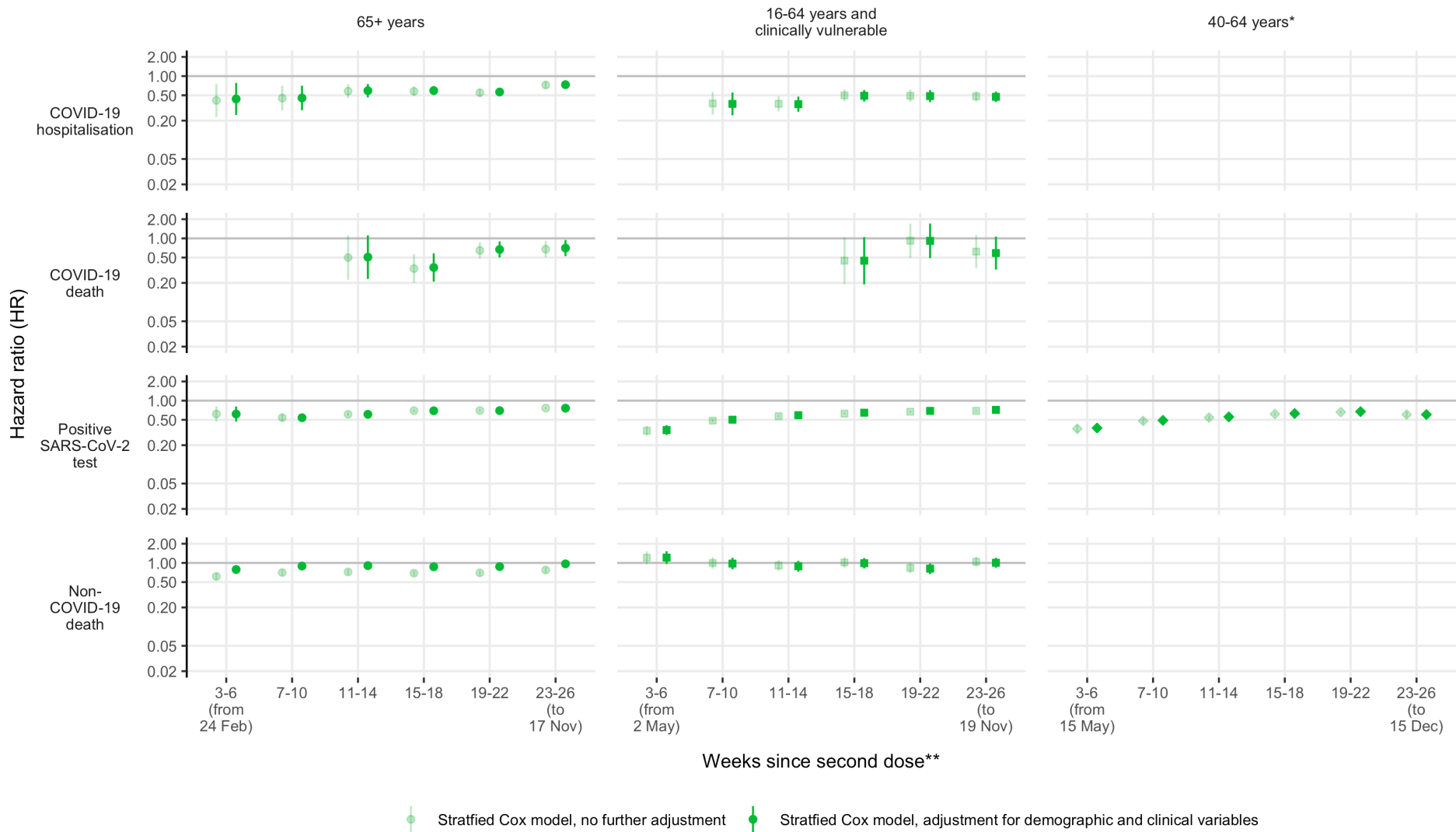
^a And not clinically vulnerable



Supplementary Figure 19: Unadjusted and adjusted hazard ratios for BNT162b2 vs unvaccinated

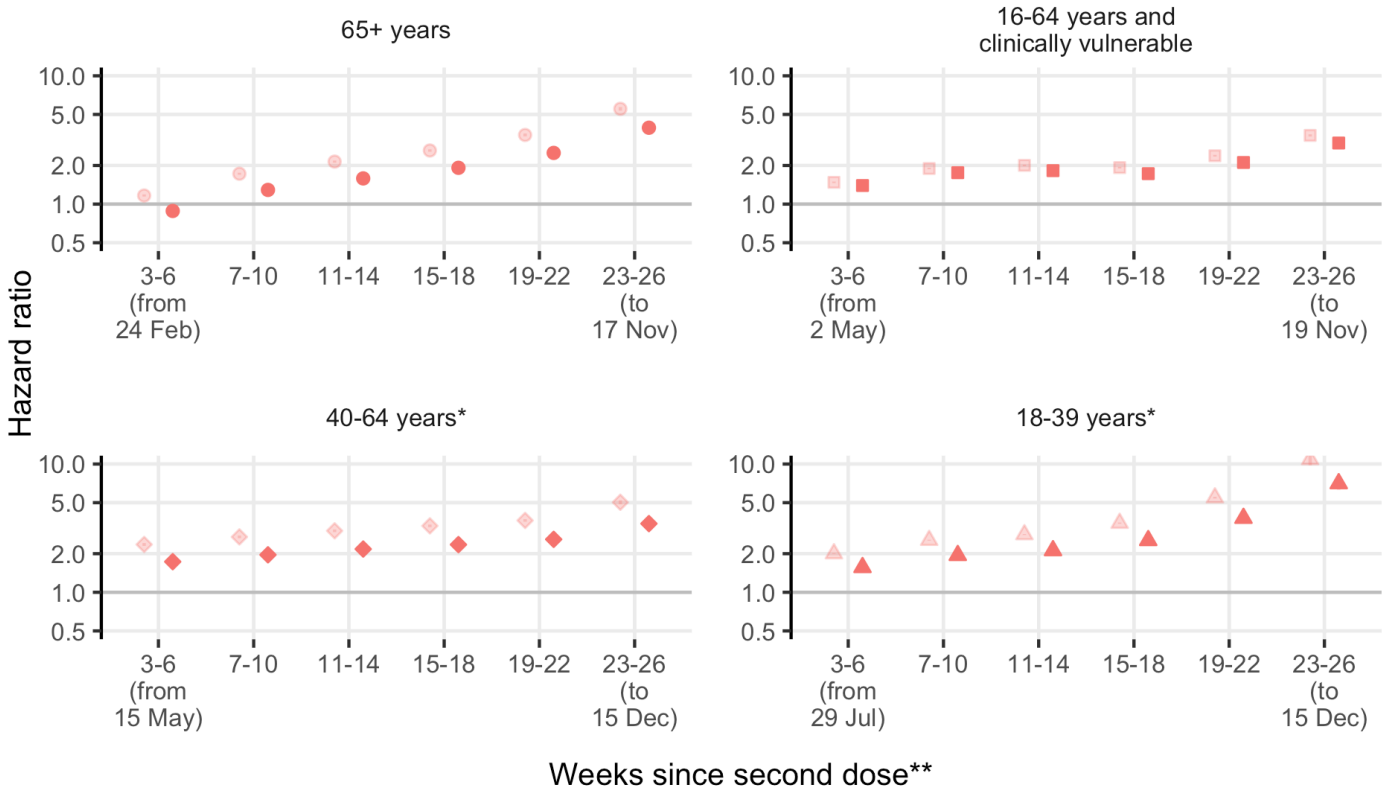


Supplementary Figure 20: Unadjusted and adjusted hazard ratios for ChAdOx1 vs unvaccinated



Supplementary Figure 21: Unadjusted and adjusted hazard ratios for BNT162b2 vs ChAdOx1

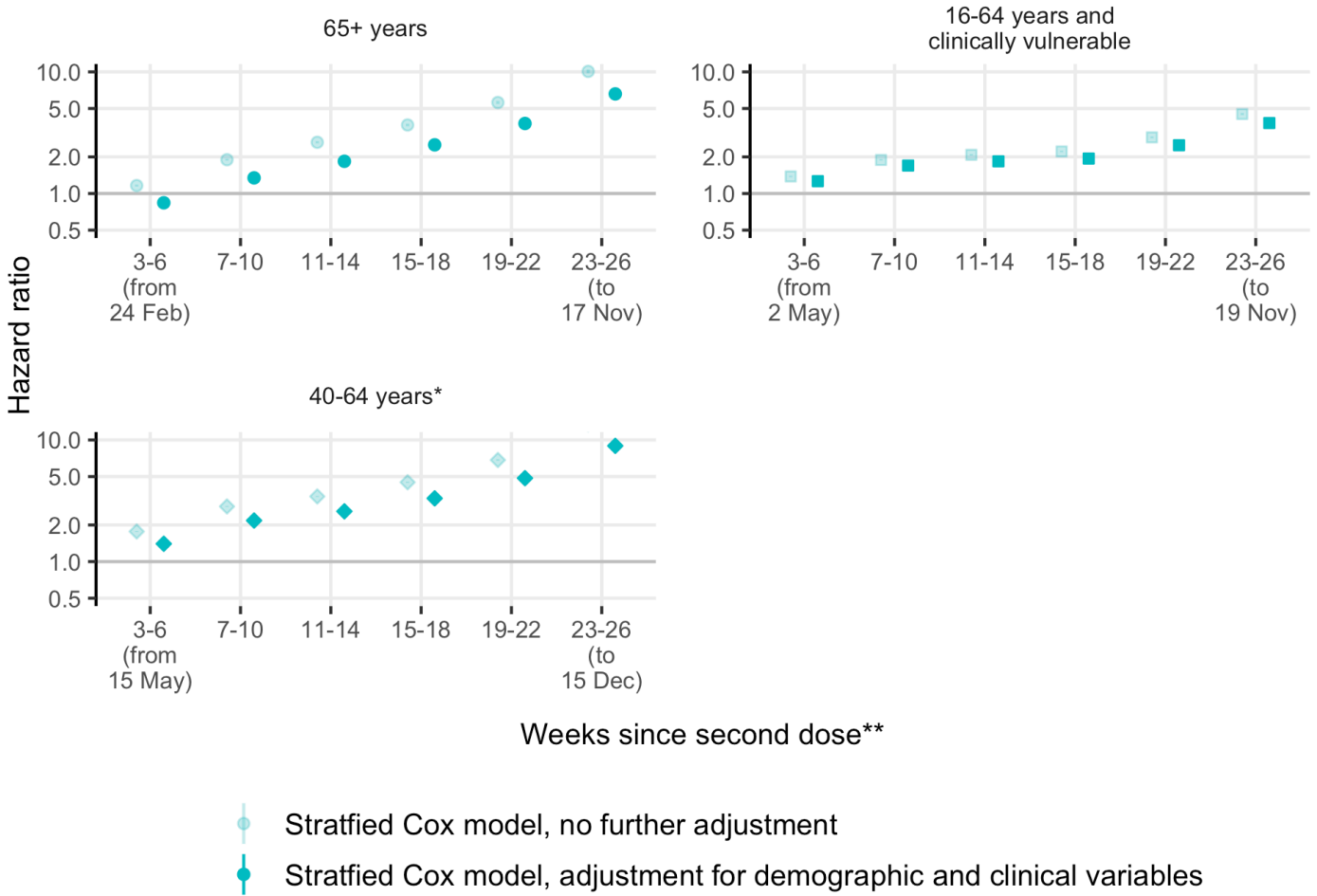
Any SARS-CoV-2 test



- Stratified Cox model, no further adjustment
- Stratified Cox model, adjustment for demographic and clinical variables

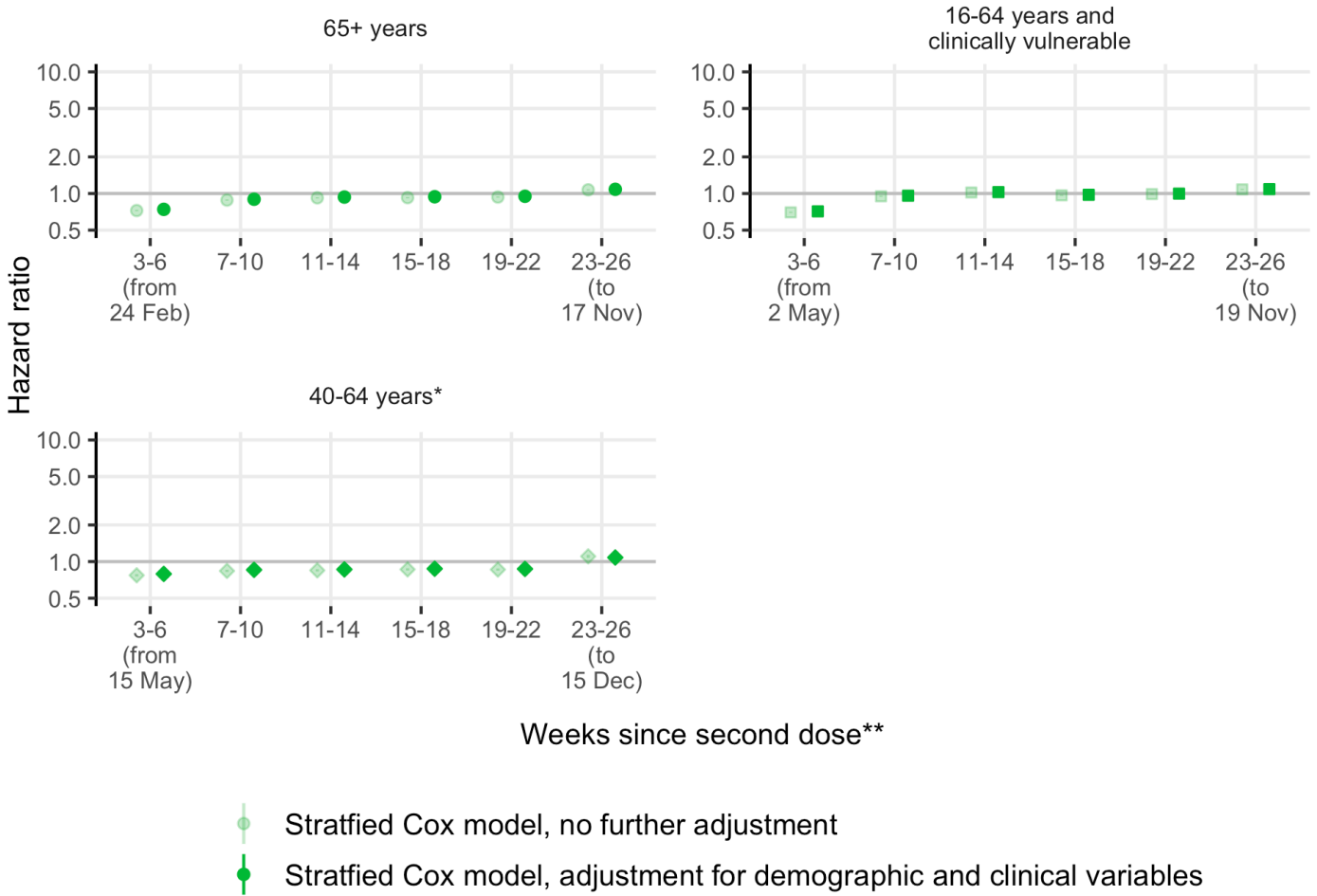
Supplementary Figure 22: Unadjusted and adjusted hazard ratios for any SARS-CoV-2 test for BNT162b2 vs unvaccinated

Any SARS-CoV-2 test



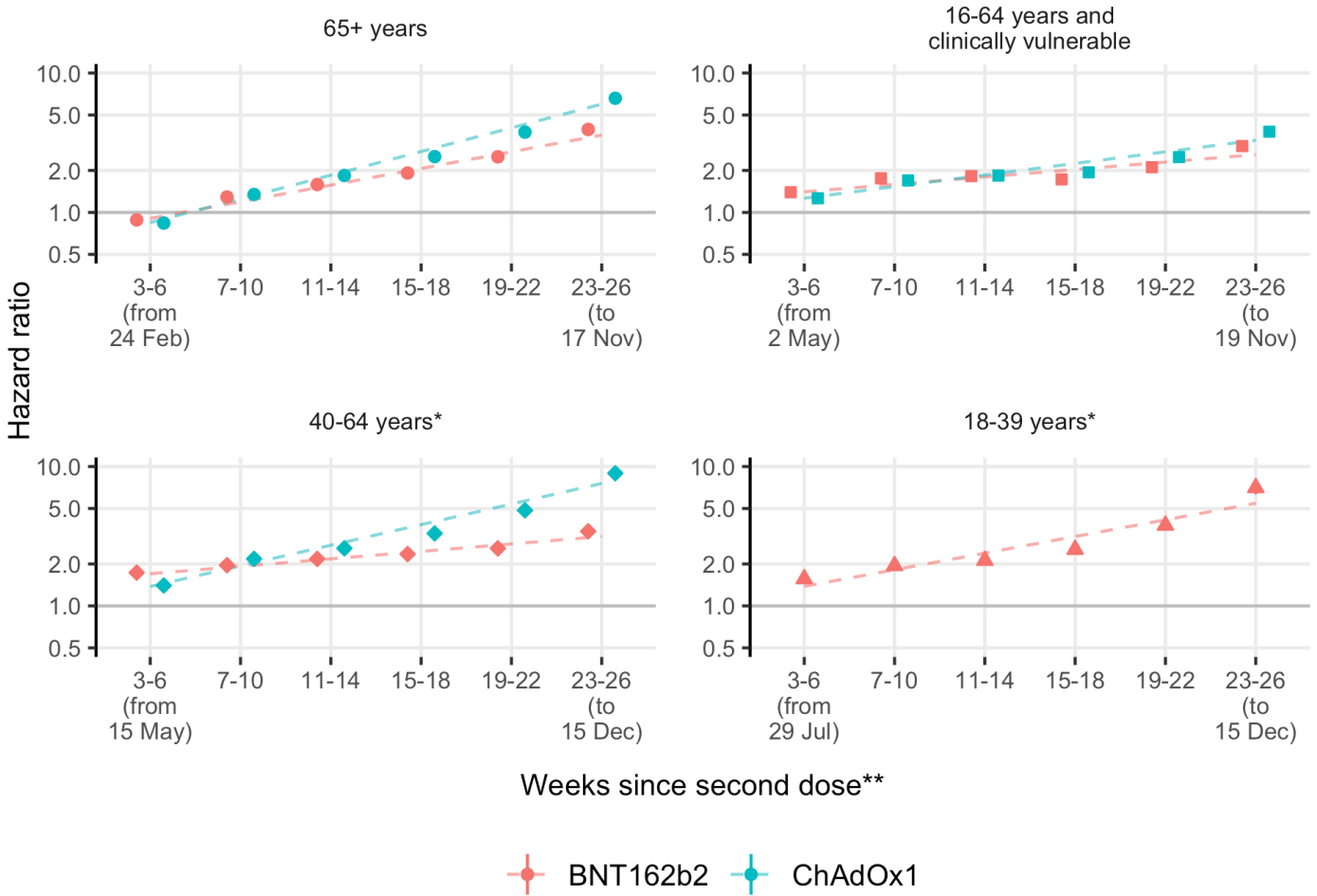
Supplementary Figure 23: Unadjusted and adjusted hazard ratios for any SARS-CoV-2 test for ChAdOx1 vs unvaccinated

Any SARS-CoV-2 test



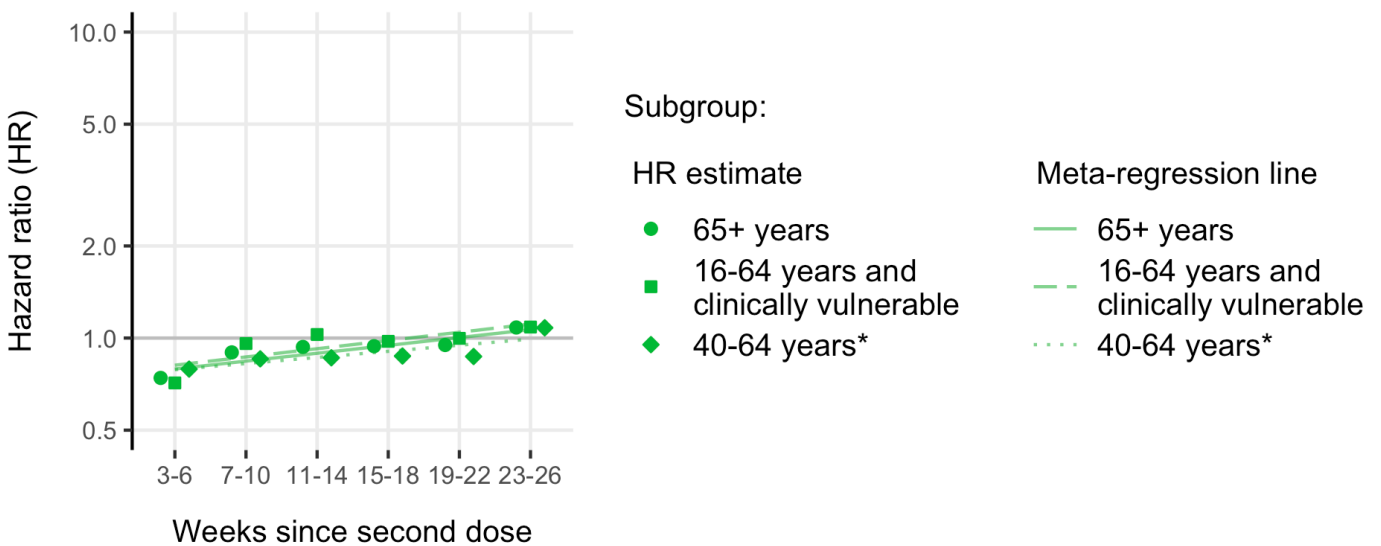
Supplementary Figure 24: Unadjusted and adjusted hazard ratios for any SARS-CoV-2 test for BNT162b2 vs ChAdOx1

Any SARS-CoV-2 test



Supplementary Figure 25: Adjusted hazard ratios for any SARS-CoV-2 test for BNT162b2 and ChAdOx1 vs unvaccinated

Any SARS-CoV-2 test



Supplementary Figure 26: Adjusted hazard ratios for any SARS-CoV-2 test for BNT162b2 vs ChAdOx1

Supplementary Table 9: Hazard ratios corresponding to covariates in the adjusted BNT162b2 vs unvaccinated model in the 65+ years subgroup.

Variable	Category ^b	COVID-19 hospitalisation	COVID-19 death	Positive SARS-CoV-2 test	Non-COVID-19 death	Any SARS-CoV-2 test
Age ^a	age_65to70	1.06 (1.00-1.12)	1.01 (0.88-1.16)	0.96 (0.94-0.99)	1.08 (1.01-1.15)	0.95 (0.94-0.96)
	age_65to75	0.98 (0.95-1.01)	0.96 (0.90-1.03)	0.97 (0.96-0.98)	1.01 (0.99-1.03)	0.97 (0.97-0.98)
	age_75to80	0.99 (0.91-1.08)	1.00 (0.83-1.19)	0.95 (0.91-1.00)	1.07 (1.02-1.13)	0.96 (0.95-0.97)
	age_80plus	1.41 (0.87-2.31)	1.11 (0.53-2.35)	0.84 (0.61-1.17)	0.98 (0.83-1.17)	0.66 (0.62-0.71)
	age_80plus_squared	1.00 (1.00-1.00)	1.00 (1.00-1.00)	1.00 (1.00-1.00)	1.00 (1.00-1.00)	1.00 (1.00-1.00)
Sex	Female	1.00 (ref)	-	1.00 (ref)	1.00 (ref)	1.00 (ref)
	Male	1.31 (1.21-1.42)	-	1.14 (1.10-1.18)	1.26 (1.20-1.31)	1.00 (0.99-1.01)
IMD	1 most deprived	1.00 (ref)	1.00 (ref)	1.00 (ref)	1.00 (ref)	1.00 (ref)
	2	0.85 (0.76-0.95)	-	0.97 (0.92-1.03)	0.94 (0.87-1.01)	1.11 (1.09-1.13)
	3	0.76 (0.68-0.86)	-	0.89 (0.84-0.94)	0.84 (0.79-0.91)	1.19 (1.17-1.21)
	4	-	-	0.90 (0.85-0.96)	0.86 (0.80-0.93)	1.25 (1.23-1.28)
	5 least deprived	-	-	0.89 (0.84-0.95)	0.80 (0.75-0.87)	1.34 (1.32-1.36)
	4 / 5 least deprived	0.67 (0.60-0.75)	-	-	-	-
	2 / 3 / 4 / 5 least deprived	-	0.70 (0.58-0.85)	-	-	-
Ethnicity	White	1.00 (ref)	1.00 (ref)	1.00 (ref)	1.00 (ref)	1.00 (ref)
	Black	-	-	-	0.58 (0.48-0.72)	0.81 (0.77-0.85)
	South Asian	-	-	-	0.49 (0.42-0.57)	0.62 (0.60-0.64)
	Mixed	-	-	-	-	0.80 (0.74-0.86)
	Other	-	-	-	-	0.63 (0.60-0.67)
	Black / South Asian / Mixed / Other	1.12 (0.99-1.27)	1.65 (1.31-2.08)	1.07 (0.99-1.15)	-	-
	Mixed / Other	-	-	-	0.61 (0.49-0.76)	-
BMI	Not obese	1.00 (ref)	1.00 (ref)	1.00 (ref)	1.00 (ref)	1.00 (ref)
	Obese I (30-34.9)	-	-	1.20 (1.15-1.26)	0.76 (0.72-0.81)	0.94 (0.93-0.95)
	Obese II (35-39.9)	-	-	1.20 (1.12-1.29)	0.78 (0.70-0.86)	0.90 (0.88-0.92)
	Obese III (40+)	-	-	1.23 (1.11-1.37)	0.83 (0.72-0.97)	0.85 (0.82-0.88)
	Obese I (30-34.9) / Obese II (35-39.9)	1.31 (1.20-1.43)	1.63 (1.37-1.94)	-	-	-
	/ Obese III (40+)	-	-	-	-	-
	-	-	-	-	-	-
History of	Chronic respiratory disease	1.17 (1.03-1.32)	1.68 (1.36-2.08)	1.08 (1.00-1.16)	1.55 (1.45-1.65)	1.00 (0.98-1.02)
	Chronic heart disease	1.03 (0.93-1.15)	-	1.05 (0.98-1.11)	1.28 (1.21-1.36)	1.15 (1.13-1.17)
	Chronic liver disease	-	-	0.96 (0.87-1.07)	1.34 (1.20-1.49)	1.10 (1.07-1.13)
	Chronic kidney disease	1.06 (0.94-1.18)	-	1.02 (0.96-1.09)	1.08 (1.02-1.14)	1.09 (1.07-1.11)
	Chronic neurological disease	1.13 (1.01-1.27)	-	1.02 (0.95-1.10)	1.19 (1.12-1.26)	1.13 (1.11-1.15)
	Diabetes	1.11 (1.00-1.23)	-	1.04 (0.98-1.11)	1.12 (1.06-1.18)	0.99 (0.98-1.01)
	Immunosuppression	-	-	1.08 (0.99-1.18)	1.25 (1.15-1.35)	1.12 (1.10-1.15)
	Learning disability	-	-	-	-	1.21 (1.06-1.39)
	Serious mental illness	-	-	-	1.37 (1.16-1.62)	1.07 (1.02-1.12)
	-	-	-	-	-	-
Shielding criteria met	yes	1.82 (1.64-2.02)	-	1.30 (1.23-1.37)	1.82 (1.72-1.93)	1.28 (1.26-1.30)
Morbidity count	0	1.00 (ref)	1.00 (ref)	1.00 (ref)	1.00 (ref)	1.00 (ref)
	1	1.74 (1.53-1.98)	-	1.07 (1.00-1.14)	1.49 (1.38-1.61)	0.90 (0.89-0.92)
	2+	2.51 (2.08-3.03)	-	1.13 (1.00-1.27)	1.70 (1.51-1.90)	0.85 (0.82-0.87)
	1 / 2+	-	3.26 (2.57-4.15)	-	-	-
Flu vaccine in previous 5 years	yes	-	-	1.31 (1.23-1.38)	0.93 (0.86-1.00)	1.49 (1.46-1.51)
Resident in long-term residential home	yes	-	-	-	5.68 (4.82-6.69)	7.36 (6.92-7.83)
Housebound	yes	-	-	1.20 (1.05-1.37)	2.37 (2.20-2.55)	1.28 (1.23-1.32)
Number of SARS-CoV-2 tests	0	1.00 (ref)	1.00 (ref)	1.00 (ref)	1.00 (ref)	1.00 (ref)
	1	1.23 (1.08-1.40)	-	1.42 (1.34-1.50)	1.23 (1.15-1.32)	1.51 (1.49-1.53)
	2	-	-	-	1.57 (1.42-1.73)	1.70 (1.66-1.74)
	3+	-	-	-	2.54 (2.35-2.75)	2.79 (2.72-2.85)
	2 / 3+	1.74 (1.52-1.99)	-	1.39 (1.29-1.50)	-	-
	1 / 2 / 3+	-	1.63 (1.33-2.00)	-	-	-
	-	-	-	-	-	-

^a Categories separated by "/" were merged due to low event counts.

^b Age terms were fit separately within strata. The age range in the strata is indicated by the suffix following the underscore on the age category label. Strata in which the age range was < 5 years included only a linear age term, otherwise a quadratic age term was included.

Supplementary Table 10: Hazard ratios corresponding to covariates in the adjusted ChAdOx1 vs unvaccinated model in the 65+ years subgroup.

Variable	Category ^b	COVID-19 hospitalisation	COVID-19 death	Positive SARS-CoV-2 test	Non-COVID-19 death	Any SARS-CoV-2 test
Age ^a	age_65to70	1.05 (1.00-1.10)	1.04 (0.92-1.17)	0.95 (0.93-0.96)	1.11 (1.05-1.16)	0.93 (0.93-0.94)
	age_65to75	1.02 (1.00-1.04)	0.94 (0.90-0.99)	0.96 (0.96-0.97)	1.04 (1.03-1.06)	0.97 (0.97-0.97)
	age_75to80	0.93 (0.85-1.01)	0.92 (0.77-1.10)	0.94 (0.89-0.99)	1.02 (0.96-1.07)	0.97 (0.96-0.99)
	age_80plus	1.38 (0.68-2.79)	1.28 (0.46-3.55)	1.00 (0.62-1.62)	0.94 (0.72-1.22)	0.99 (0.88-1.11)
	age_80plus_squared	1.00 (0.99-1.00)	1.00 (0.99-1.00)	1.00 (1.00-1.00)	1.00 (1.00-1.00)	1.00 (1.00-1.00)
Sex	Female	1.00 (ref)	-	1.00 (ref)	1.00 (ref)	1.00 (ref)
	Male	1.31 (1.22-1.40)	-	1.08 (1.05-1.11)	1.29 (1.23-1.35)	0.98 (0.98-0.99)
IMD	1 most deprived	1.00 (ref)	1.00 (ref)	1.00 (ref)	1.00 (ref)	1.00 (ref)
	2	0.88 (0.79-0.97)	0.72 (0.57-0.90)	0.95 (0.91-0.99)	0.94 (0.87-1.01)	1.13 (1.11-1.14)
	3	0.77 (0.69-0.85)	-	0.93 (0.89-0.97)	0.82 (0.77-0.89)	1.21 (1.19-1.22)
	4	0.72 (0.65-0.81)	-	0.92 (0.88-0.96)	0.84 (0.78-0.90)	1.32 (1.30-1.34)
	5 least deprived	0.61 (0.53-0.69)	-	0.91 (0.88-0.96)	0.79 (0.73-0.85)	1.43 (1.41-1.45)
	3 / 4 / 5 least deprived	-	0.57 (0.47-0.69)	-	-	-
Ethnicity	White	1.00 (ref)	1.00 (ref)	1.00 (ref)	1.00 (ref)	1.00 (ref)
	Black	-	-	-	-	0.84 (0.80-0.88)
	South Asian	-	-	-	-	0.60 (0.58-0.62)
	Mixed	-	-	-	-	0.81 (0.76-0.86)
	Other	-	-	-	-	0.67 (0.64-0.70)
	Black / South Asian / Mixed / Other	1.19 (1.06-1.34)	1.26 (1.00-1.57)	1.13 (1.06-1.19)	0.55 (0.49-0.62)	-
BMI	Not obese	1.00 (ref)	1.00 (ref)	1.00 (ref)	1.00 (ref)	1.00 (ref)
	Obese I (30-34.9)	1.51 (1.39-1.65)	-	1.24 (1.20-1.28)	0.75 (0.70-0.80)	0.94 (0.93-0.95)
	Obese II (35-39.9)	-	-	1.28 (1.22-1.34)	0.80 (0.73-0.88)	0.90 (0.88-0.91)
	Obese III (40+)	-	-	1.29 (1.20-1.38)	0.97 (0.87-1.09)	0.86 (0.84-0.88)
	Obese II (35-39.9) / Obese III (40+)	1.74 (1.58-1.92)	-	-	-	-
	Obese I (30-34.9) / Obese II (35-39.9) / Obese III (40+)	-	1.92 (1.63-2.25)	-	-	-
	-	-	-	-	-	-
History of	Chronic respiratory disease	1.35 (1.22-1.50)	-	1.10 (1.04-1.16)	1.67 (1.56-1.79)	0.96 (0.94-0.98)
	Chronic heart disease	1.16 (1.06-1.26)	-	1.12 (1.07-1.17)	1.29 (1.21-1.37)	1.12 (1.10-1.14)
	Chronic liver disease	-	-	1.13 (1.05-1.21)	1.40 (1.27-1.55)	1.11 (1.09-1.14)
	Chronic kidney disease	1.11 (1.00-1.23)	-	1.06 (1.01-1.12)	1.03 (0.97-1.10)	1.08 (1.06-1.10)
	Chronic neurological disease	1.22 (1.10-1.36)	-	1.05 (0.99-1.11)	1.29 (1.21-1.38)	1.10 (1.08-1.11)
	Diabetes	1.26 (1.15-1.38)	1.70 (1.43-2.02)	1.08 (1.03-1.14)	1.13 (1.06-1.20)	0.98 (0.96-0.99)
	Immunosuppression	-	-	1.06 (0.99-1.13)	1.07 (0.98-1.17)	1.11 (1.08-1.13)
	Learning disability	-	-	-	-	1.47 (1.34-1.61)
	Serious mental illness	-	-	-	1.30 (1.11-1.50)	1.00 (0.96-1.04)
	-	-	-	-	-	-
Shielding criteria met	yes	1.90 (1.72-2.09)	-	1.13 (1.08-1.19)	2.04 (1.90-2.18)	1.21 (1.20-1.23)
Morbidity count	0	1.00 (ref)	1.00 (ref)	1.00 (ref)	1.00 (ref)	1.00 (ref)
	1	1.66 (1.49-1.86)	-	0.95 (0.91-1.00)	1.74 (1.61-1.89)	0.89 (0.88-0.91)
	2+	2.18 (1.85-2.56)	-	0.91 (0.83-1.00)	2.17 (1.92-2.45)	0.84 (0.82-0.87)
	1 / 2+	-	3.51 (2.76-4.47)	-	-	-
Flu vaccine in previous 5 years	yes	1.00 (0.92-1.09)	-	1.38 (1.33-1.44)	0.81 (0.76-0.87)	1.55 (1.53-1.57)
Resident in long-term residential home	yes	-	-	-	4.41 (3.65-5.33)	4.87 (4.57-5.19)
Housebound	yes	1.51 (1.30-1.75)	-	0.89 (0.81-0.99)	2.76 (2.56-2.97)	1.03 (1.01-1.06)
Number of SARS-CoV-2 tests	0	1.00 (ref)	1.00 (ref)	1.00 (ref)	1.00 (ref)	1.00 (ref)
	1	1.31 (1.17-1.46)	-	1.34 (1.28-1.39)	1.34 (1.25-1.44)	1.48 (1.46-1.50)
	2	-	-	1.34 (1.24-1.44)	1.61 (1.45-1.79)	1.68 (1.64-1.71)
	3+	-	-	1.29 (1.18-1.40)	2.61 (2.41-2.83)	2.53 (2.48-2.59)
	2 / 3+	1.64 (1.45-1.85)	-	-	-	-
	1 / 2 / 3+	-	1.64 (1.35-1.98)	-	-	-

^a Categories separated by "/" were merged due to low event counts.

^b Age terms were fit separately within strata. The age range in the strata is indicated by the suffix following the underscore on the age category label. Strata in which the age range was < 5 years included only a linear age term, otherwise a quadratic age term was included.

Supplementary Table 11: Hazard ratios corresponding to covariates in the adjusted BNT162b2 vs ChAdOx1 model in the 65+ years subgroup.

Variable	Category ^b	COVID-19 hospitalisation	COVID-19 death	Positive SARS-CoV-2 test	Non-COVID-19 death	Any SARS-CoV-2 test
Age ^a	age_65to70	1.06 (0.99-1.13)	1.03 (0.80-1.31)	0.94 (0.93-0.96)	1.11 (1.06-1.17)	0.94 (0.93-0.94)
	age_65to75	1.02 (1.00-1.04)	0.94 (0.89-0.99)	0.97 (0.96-0.98)	1.04 (1.03-1.05)	0.97 (0.97-0.97)
	age_75to80	0.90 (0.80-1.01)	0.83 (0.65-1.06)	0.92 (0.88-0.96)	1.07 (1.01-1.14)	0.96 (0.95-0.97)
	age_80plus	1.36 (0.77-2.41)	0.70 (0.28-1.77)	0.80 (0.57-1.13)	1.00 (0.83-1.19)	0.65 (0.61-0.69)
	age_80plus_squared	1.00 (1.00-1.00)	1.00 (1.00-1.01)	1.00 (1.00-1.00)	1.00 (1.00-1.00)	1.00 (1.00-1.00)
Sex	Female	1.00 (ref)	-	1.00 (ref)	1.00 (ref)	1.00 (ref)
	Male	1.46 (1.36-1.57)	-	1.13 (1.10-1.15)	1.29 (1.24-1.34)	1.00 (0.99-1.01)
IMD	1 most deprived	1.00 (ref)	1.00 (ref)	1.00 (ref)	1.00 (ref)	1.00 (ref)
	2	0.81 (0.73-0.90)	-	0.95 (0.91-0.99)	0.92 (0.86-0.98)	1.13 (1.12-1.15)
	3	0.66 (0.59-0.73)	-	0.91 (0.87-0.94)	0.82 (0.77-0.87)	1.21 (1.20-1.23)
	4	-	-	0.91 (0.88-0.95)	0.84 (0.79-0.89)	1.32 (1.30-1.33)
	5 least deprived	-	-	0.90 (0.87-0.94)	0.78 (0.73-0.83)	1.42 (1.40-1.43)
	4 / 5 least deprived	0.60 (0.55-0.66)	-	-	-	-
	2 / 3 / 4 / 5 least deprived	-	0.51 (0.42-0.62)	-	-	-
Ethnicity	White	1.00 (ref)	1.00 (ref)	1.00 (ref)	1.00 (ref)	1.00 (ref)
	Black	-	-	-	-	0.85 (0.81-0.89)
	South Asian	-	-	-	-	0.62 (0.61-0.64)
	Mixed	-	-	-	-	0.82 (0.78-0.87)
	Other	-	-	-	-	0.70 (0.67-0.73)
	Black / South Asian / Mixed / Other	1.44 (1.23-1.68)	1.53 (1.07-2.17)	1.15 (1.09-1.22)	0.78 (0.70-0.87)	-
BMI	Not obese	1.00 (ref)	1.00 (ref)	1.00 (ref)	1.00 (ref)	1.00 (ref)
	Obese I (30-34.9)	-	-	1.21 (1.18-1.24)	0.75 (0.71-0.79)	0.94 (0.93-0.95)
	Obese II (35-39.9)	-	-	1.24 (1.19-1.30)	0.81 (0.75-0.88)	0.89 (0.88-0.91)
	Obese III (40+)	-	-	1.29 (1.21-1.37)	0.99 (0.89-1.09)	0.85 (0.83-0.87)
	Obese I (30-34.9) / Obese II (35-39.9)	1.48 (1.37-1.59)	1.77 (1.48-2.11)	-	-	-
	/ Obese III (40+)	-	-	-	-	-
History of	Chronic respiratory disease	1.27 (1.15-1.40)	2.27 (1.86-2.77)	1.11 (1.06-1.16)	1.57 (1.49-1.65)	0.97 (0.96-0.98)
	Chronic heart disease	1.07 (0.98-1.17)	-	1.12 (1.07-1.16)	1.28 (1.22-1.35)	1.13 (1.12-1.15)
	Chronic liver disease	-	-	1.10 (1.03-1.17)	1.36 (1.25-1.48)	1.11 (1.09-1.13)
	Chronic kidney disease	1.14 (1.04-1.25)	1.70 (1.39-2.08)	1.07 (1.02-1.12)	1.05 (1.00-1.10)	1.09 (1.07-1.10)
	Chronic neurological disease	1.11 (1.01-1.23)	-	1.01 (0.96-1.06)	1.23 (1.17-1.29)	1.10 (1.09-1.12)
	Diabetes	1.18 (1.08-1.29)	-	1.05 (1.01-1.10)	1.11 (1.06-1.17)	0.97 (0.96-0.99)
	Immunosuppression	-	-	1.11 (1.05-1.18)	1.13 (1.05-1.21)	1.11 (1.10-1.13)
	Learning disability	-	-	-	-	1.35 (1.24-1.47)
	Serious mental illness	-	-	-	1.27 (1.09-1.47)	0.96 (0.93-0.99)
Shielding criteria met	yes	2.35 (2.14-2.58)	-	1.18 (1.13-1.22)	2.10 (1.99-2.21)	1.26 (1.25-1.28)
Morbidity count	0	1.00 (ref)	1.00 (ref)	1.00 (ref)	1.00 (ref)	1.00 (ref)
	1	1.81 (1.59-2.05)	-	0.92 (0.89-0.96)	1.57 (1.47-1.68)	0.88 (0.87-0.89)
	2+	2.85 (2.41-3.37)	-	0.89 (0.83-0.97)	1.93 (1.75-2.12)	0.83 (0.81-0.85)
	1 / 2+	-	3.95 (2.84-5.50)	-	-	-
Flu vaccine in previous 5 years	yes	-	-	1.42 (1.36-1.48)	0.71 (0.67-0.76)	1.55 (1.53-1.57)
Resident in long-term residential home	yes	-	-	-	5.11 (4.43-5.88)	6.57 (6.27-6.89)
Housebound	yes	-	-	0.83 (0.75-0.92)	2.60 (2.44-2.78)	1.10 (1.07-1.12)
Number of SARS-CoV-2 tests	0	1.00 (ref)	1.00 (ref)	1.00 (ref)	1.00 (ref)	1.00 (ref)
	1	1.41 (1.27-1.56)	-	1.33 (1.29-1.38)	1.24 (1.18-1.32)	1.46 (1.45-1.48)
	2	-	-	-	1.63 (1.51-1.77)	1.64 (1.62-1.67)
	3+	-	-	-	2.64 (2.47-2.81)	2.56 (2.51-2.60)
	2 / 3+	1.89 (1.70-2.11)	-	1.29 (1.23-1.36)	-	-
	1 / 2 / 3+	-	1.71 (1.41-2.07)	-	-	-

^a Categories separated by "/" were merged due to low event counts.

^b Age terms were fit separately within strata. The age range in the strata is indicated by the suffix following the underscore on the age category label. Strata in which the age range was < 5 years included only a linear age term, otherwise a quadratic age term was included.

Supplementary Table 12: Hazard ratios corresponding to covariates in the adjusted BNT162b2 vs unvaccinated model in the 16-64 years and clinically vulnerable subgroup.

Variable	Category ^b	COVID-19 hospitalisation	COVID-19 death	Positive SARS-CoV-2 test	Non-COVID-19 death	Any SARS-CoV-2 test
Age ^a	age_16to64	1.00 (0.98-1.02)	1.14 (1.00-1.29)	1.01 (1.01-1.02)	1.10 (1.05-1.16)	1.00 (1.00-1.00)
	age_16to64_squared	1.00 (1.00-1.00)	1.00 (1.00-1.00)	1.00 (1.00-1.00)	1.00 (1.00-1.00)	1.00 (1.00-1.00)
Sex	Female	1.00 (ref)	-	1.00 (ref)	1.00 (ref)	1.00 (ref)
	Male	0.96 (0.89-1.03)	-	0.86 (0.84-0.88)	1.52 (1.37-1.69)	0.77 (0.76-0.78)
IMD	1 most deprived	1.00 (ref)	1.00 (ref)	1.00 (ref)	1.00 (ref)	1.00 (ref)
	2	-	-	1.07 (1.03-1.10)	0.83 (0.72-0.95)	1.11 (1.10-1.13)
	3	-	-	1.09 (1.05-1.12)	0.79 (0.68-0.93)	1.22 (1.20-1.24)
	4	-	-	1.12 (1.08-1.16)	0.85 (0.73-1.00)	1.31 (1.29-1.33)
	5 least deprived	-	-	1.12 (1.08-1.16)	0.73 (0.61-0.88)	1.44 (1.41-1.46)
	2 / 3 / 4 / 5 least deprived	0.99 (0.92-1.07)	0.98 (0.73-1.31)	-	-	-
Ethnicity	White	1.00 (ref)	1.00 (ref)	1.00 (ref)	1.00 (ref)	1.00 (ref)
	Black	-	-	-	-	0.94 (0.92-0.97)
	South Asian	-	-	-	-	0.69 (0.67-0.70)
	Mixed	-	-	-	-	0.92 (0.89-0.95)
	Other	-	-	-	-	0.77 (0.75-0.80)
	Black / South Asian / Mixed / Other	1.27 (1.17-1.39)	1.40 (1.00-1.96)	0.89 (0.87-0.92)	0.56 (0.47-0.67)	-
BMI	Not obese	1.00 (ref)	1.00 (ref)	1.00 (ref)	1.00 (ref)	1.00 (ref)
	Obese I (30-34.9)	-	-	1.13 (1.10-1.16)	0.64 (0.55-0.73)	1.01 (1.00-1.02)
	Obese II (35-39.9)	-	-	1.20 (1.15-1.25)	0.66 (0.55-0.80)	0.98 (0.97-1.00)
	Obese III (40+)	-	-	1.19 (1.13-1.25)	0.73 (0.61-0.87)	0.99 (0.97-1.01)
	Obese I (30-34.9) / Obese II (35-39.9)	1.92 (1.78-2.07)	3.11 (2.31-4.20)	-	-	-
	/ Obese III (40+)	-	-	-	-	-
History of	Chronic respiratory disease	-	-	0.91 (0.86-0.97)	1.56 (1.34-1.82)	0.87 (0.85-0.89)
	Chronic heart disease	-	1.31 (0.96-1.79)	1.06 (1.00-1.11)	1.42 (1.25-1.61)	1.02 (1.00-1.04)
	Chronic liver disease	-	-	0.92 (0.87-0.97)	1.93 (1.67-2.22)	1.02 (1.00-1.04)
	Chronic kidney disease	-	-	1.08 (1.01-1.16)	1.38 (1.15-1.65)	1.10 (1.07-1.13)
	Chronic neurological disease	-	-	0.96 (0.91-1.01)	1.14 (0.98-1.32)	0.99 (0.97-1.01)
	Diabetes	-	-	1.08 (1.03-1.14)	0.97 (0.84-1.12)	0.96 (0.94-0.98)
	Immunosuppression	-	1.43 (0.98-2.11)	1.13 (1.07-1.19)	0.90 (0.75-1.07)	1.10 (1.07-1.12)
	Learning disability	-	-	0.58 (0.53-0.63)	-	0.91 (0.88-0.94)
	Serious mental illness	-	-	0.57 (0.53-0.61)	1.10 (0.89-1.36)	0.78 (0.76-0.80)
Shielding criteria met	yes	1.46 (1.32-1.62)	-	0.92 (0.88-0.95)	1.98 (1.64-2.37)	0.90 (0.89-0.92)
Morbidity count	0	1.00 (ref)	1.00 (ref)	1.00 (ref)	1.00 (ref)	1.00 (ref)
	1	-	-	0.90 (0.84-0.96)	0.70 (0.54-0.91)	0.98 (0.95-1.00)
	2+	-	-	0.87 (0.78-0.98)	1.19 (0.87-1.63)	0.95 (0.91-0.99)
	1 / 2+	1.89 (1.53-2.33)	2.75 (1.07-7.11)	-	-	-
Flu vaccine in previous 5 years	yes	-	-	1.05 (1.02-1.07)	0.96 (0.85-1.09)	1.24 (1.23-1.26)
Resident in long-term residential home	yes	-	-	-	-	2.53 (2.36-2.72)
Housebound	yes	-	-	-	3.36 (2.61-4.34)	0.98 (0.92-1.05)
Number of SARS-CoV-2 tests	0	1.00 (ref)	1.00 (ref)	1.00 (ref)	1.00 (ref)	1.00 (ref)
	1	-	-	1.49 (1.45-1.54)	1.31 (1.13-1.51)	1.47 (1.45-1.48)
	2	-	-	1.61 (1.55-1.68)	1.67 (1.37-2.04)	1.78 (1.75-1.81)
	3+	-	-	1.69 (1.62-1.76)	4.77 (4.19-5.42)	2.68 (2.64-2.73)
	1 / 2 / 3+	1.69 (1.57-1.82)	1.30 (0.96-1.75)	-	-	-
Pregnancy	yes	-	-	-	-	1.97 (1.92-2.02)

^a Categories separated by "/" were merged due to low event counts.

^b Age terms were fit separately within strata. The age range in the strata is indicated by the suffix following the underscore on the age category label. Strata in which the age range was < 5 years included only a linear age term, otherwise a quadratic age term was included.

Supplementary Table 13: Hazard ratios corresponding to covariates in the adjusted ChAdOx1 vs unvaccinated model in the 16-64 years and clinically vulnerable subgroup.

Variable	Category ^b	COVID-19 hospitalisation	COVID-19 death	Positive SARS-CoV-2 test	Non-COVID-19 death	Any SARS-CoV-2 test
Age ^a	age_16to64	1.02 (1.00-1.04)	1.10 (1.01-1.20)	1.02 (1.02-1.03)	1.13 (1.08-1.19)	1.02 (1.02-1.02)
	age_16to64_squared	1.00 (1.00-1.00)	1.00 (1.00-1.00)	1.00 (1.00-1.00)	1.00 (1.00-1.00)	1.00 (1.00-1.00)
Sex	Female	1.00 (ref)	1.00 (ref)	1.00 (ref)	1.00 (ref)	1.00 (ref)
	Male	1.07 (1.00-1.13)	1.56 (1.27-1.92)	0.88 (0.87-0.90)	1.42 (1.30-1.54)	0.77 (0.76-0.78)
IMD	1 most deprived	1.00 (ref)	1.00 (ref)	1.00 (ref)	1.00 (ref)	1.00 (ref)
	2	-	-	1.08 (1.05-1.10)	0.93 (0.83-1.04)	1.13 (1.12-1.14)
	3	-	-	1.10 (1.07-1.13)	0.84 (0.74-0.95)	1.22 (1.21-1.24)
	4	-	-	1.12 (1.09-1.15)	0.76 (0.67-0.88)	1.31 (1.30-1.33)
	5 least deprived	-	-	1.15 (1.12-1.18)	0.80 (0.70-0.93)	1.44 (1.43-1.46)
	2 / 3 / 4 / 5 least deprived	0.96 (0.90-1.03)	0.94 (0.75-1.16)	-	-	-
Ethnicity	White	1.00 (ref)	1.00 (ref)	1.00 (ref)	1.00 (ref)	1.00 (ref)
	Black	1.32 (1.17-1.50)	-	0.89 (0.85-0.93)	-	0.92 (0.90-0.94)
	South Asian	1.25 (1.14-1.39)	-	0.85 (0.83-0.88)	-	0.66 (0.65-0.67)
	Mixed	-	-	0.97 (0.91-1.03)	-	0.92 (0.89-0.94)
	Other	-	-	0.70 (0.66-0.75)	-	0.75 (0.73-0.77)
	Mixed / Other	1.22 (1.06-1.40)	-	-	-	-
	Black / South Asian / Mixed / Other	-	1.15 (0.88-1.50)	-	0.55 (0.47-0.64)	-
BMI	Not obese	1.00 (ref)	1.00 (ref)	1.00 (ref)	1.00 (ref)	1.00 (ref)
	Obese I (30-34.9)	1.53 (1.41-1.66)	-	1.14 (1.12-1.17)	0.66 (0.59-0.74)	1.00 (0.99-1.01)
	Obese II (35-39.9)	1.88 (1.70-2.07)	-	1.18 (1.15-1.22)	0.62 (0.53-0.73)	1.00 (0.99-1.01)
	Obese III (40+)	2.58 (2.38-2.79)	-	1.16 (1.12-1.20)	0.69 (0.59-0.80)	1.01 (0.99-1.02)
	Obese I (30-34.9) / Obese II (35-39.9) / Obese III (40+)	-	2.75 (2.21-3.43)	-	-	-
	History of	Chronic respiratory disease	-	1.08 (0.78-1.50)	0.89 (0.85-0.94)	1.58 (1.39-1.80)
	Chronic heart disease	1.23 (1.14-1.32)	-	1.04 (1.00-1.08)	1.42 (1.28-1.58)	1.06 (1.04-1.07)
	Chronic liver disease	1.23 (1.12-1.35)	-	0.96 (0.92-1.00)	1.77 (1.57-1.99)	1.06 (1.04-1.07)
	Chronic kidney disease	-	-	1.06 (1.01-1.12)	1.39 (1.20-1.61)	1.11 (1.09-1.13)
	Chronic neurological disease	1.32 (1.21-1.44)	-	0.93 (0.90-0.97)	1.22 (1.08-1.37)	1.00 (0.98-1.01)
	Diabetes	1.62 (1.50-1.75)	1.68 (1.36-2.08)	1.08 (1.04-1.12)	1.05 (0.94-1.18)	0.94 (0.93-0.96)
	Immunosuppression	-	-	1.05 (1.00-1.09)	0.84 (0.73-0.98)	1.10 (1.08-1.12)
	Learning disability	-	-	0.55 (0.52-0.59)	-	0.92 (0.89-0.94)
	Serious mental illness	-	-	0.56 (0.53-0.59)	1.17 (0.98-1.39)	0.78 (0.76-0.79)
Shielding criteria met	yes	1.09 (0.98-1.20)	-	0.89 (0.86-0.92)	2.12 (1.81-2.50)	0.91 (0.90-0.93)
Morbidity count	0	1.00 (ref)	1.00 (ref)	1.00 (ref)	1.00 (ref)	1.00 (ref)
	1	-	-	0.94 (0.89-0.99)	0.72 (0.58-0.89)	0.97 (0.95-0.99)
	2+	-	-	0.89 (0.82-0.97)	1.11 (0.86-1.43)	0.91 (0.88-0.94)
	1 / 2+	1.30 (1.10-1.55)	2.31 (1.18-4.51)	-	-	-
Flu vaccine in previous 5 years	yes	1.21 (1.13-1.30)	-	1.02 (1.01-1.04)	0.92 (0.83-1.02)	1.23 (1.22-1.24)
Resident in long-term residential home	yes	-	-	-	-	2.42 (2.31-2.53)
Housebound	yes	-	-	0.75 (0.67-0.84)	3.71 (3.16-4.36)	0.87 (0.83-0.90)
Number of SARS-CoV-2 tests	0	1.00 (ref)	1.00 (ref)	1.00 (ref)	1.00 (ref)	1.00 (ref)
	1	1.39 (1.28-1.50)	-	1.40 (1.38-1.43)	1.15 (1.02-1.30)	1.44 (1.42-1.45)
	2	-	-	1.49 (1.44-1.53)	1.72 (1.47-2.00)	1.73 (1.71-1.75)
	3+	-	-	1.59 (1.55-1.64)	4.35 (3.91-4.84)	2.64 (2.60-2.67)
	2 / 3+	1.86 (1.72-2.02)	-	-	-	-
	1 / 2 / 3+	-	1.27 (1.02-1.58)	-	-	-
Pregnancy	yes	-	-	1.10 (1.03-1.17)	-	1.76 (1.72-1.81)

^a Categories separated by "/" were merged due to low event counts.

^b Age terms were fit separately within strata. The age range in the strata is indicated by the suffix following the underscore on the age category label. Strata in which the age range was < 5 years included only a linear age term, otherwise a quadratic age term was included.

Supplementary Table 14: Hazard ratios corresponding to covariates in the adjusted BNT162b2 vs ChAdOx1 model in the 16-64 years and clinically vulnerable subgroup.

Variable	Category ^b	COVID-19 hospitalisation	COVID-19 death	Positive SARS-CoV-2 test	Non-COVID-19 death	Any SARS-CoV-2 test
Age ^a	age_16to64	1.03 (1.00-1.06)	1.07 (0.91-1.25)	1.06 (1.05-1.06)	1.09 (1.04-1.14)	1.03 (1.03-1.03)
	age_16to64_squared	1.00 (1.00-1.00)	1.00 (1.00-1.00)	1.00 (1.00-1.00)	1.00 (1.00-1.00)	1.00 (1.00-1.00)
Sex	Female	1.00 (ref)	-	1.00 (ref)	1.00 (ref)	1.00 (ref)
	Male	1.24 (1.14-1.35)	-	0.93 (0.92-0.95)	1.43 (1.32-1.55)	0.77 (0.76-0.77)
IMD	1 most deprived	1.00 (ref)	1.00 (ref)	1.00 (ref)	1.00 (ref)	1.00 (ref)
	2	-	-	1.06 (1.04-1.09)	0.95 (0.85-1.07)	1.15 (1.13-1.16)
	3	-	-	1.08 (1.05-1.10)	0.86 (0.76-0.97)	1.26 (1.24-1.27)
	4	-	-	1.09 (1.07-1.12)	0.89 (0.78-1.01)	1.35 (1.34-1.37)
	5 least deprived	-	-	1.13 (1.10-1.16)	0.85 (0.74-0.97)	1.49 (1.47-1.50)
	2 / 3 / 4 / 5 least deprived	0.85 (0.77-0.94)	1.12 (0.75-1.68)	-	-	-
Ethnicity	White	1.00 (ref)	1.00 (ref)	1.00 (ref)	1.00 (ref)	1.00 (ref)
	Black	-	-	-	-	0.90 (0.87-0.92)
	South Asian	-	-	-	-	0.61 (0.60-0.62)
	Mixed	-	-	-	-	0.88 (0.86-0.91)
	Other	-	-	-	-	0.74 (0.72-0.76)
	Black / South Asian / Mixed / Other	1.15 (1.00-1.33)	2.07 (1.21-3.54)	0.84 (0.81-0.86)	0.60 (0.50-0.72)	-
BMI	Not obese	1.00 (ref)	1.00 (ref)	1.00 (ref)	1.00 (ref)	1.00 (ref)
	Obese I (30-34.9)	-	-	1.11 (1.09-1.14)	0.65 (0.59-0.73)	0.99 (0.98-1.00)
	Obese II (35-39.9)	-	-	1.14 (1.11-1.18)	0.62 (0.54-0.72)	0.98 (0.97-0.99)
	Obese III (40+)	-	-	1.13 (1.09-1.17)	0.66 (0.57-0.77)	1.00 (0.98-1.01)
	Obese I (30-34.9) / Obese II (35-39.9) / Obese III (40+)	1.65 (1.51-1.79)	2.24 (1.59-3.16)	-	-	-
	History of	Chronic respiratory disease	-	-	0.89 (0.85-0.93)	1.71 (1.51-1.94)
Chronic heart disease	-	1.67 (1.17-2.38)	1.03 (0.99-1.07)	1.40 (1.27-1.54)	1.04 (1.03-1.05)	
Chronic liver disease	-	-	0.97 (0.93-1.00)	1.70 (1.51-1.91)	1.04 (1.03-1.06)	
Chronic kidney disease	-	-	1.03 (0.99-1.08)	1.40 (1.22-1.60)	1.10 (1.08-1.12)	
Chronic neurological disease	-	-	0.92 (0.89-0.95)	1.19 (1.06-1.34)	0.98 (0.97-1.00)	
Diabetes	-	-	1.05 (1.01-1.09)	1.08 (0.97-1.20)	0.95 (0.93-0.96)	
Immunosuppression	-	1.51 (1.01-2.28)	1.05 (1.01-1.09)	0.82 (0.71-0.94)	1.09 (1.08-1.11)	
Learning disability	-	-	0.53 (0.50-0.57)	-	0.96 (0.94-0.98)	
Serious mental illness	-	-	0.57 (0.54-0.60)	1.15 (0.94-1.39)	0.74 (0.73-0.76)	
Shielding criteria met	yes	1.71 (1.49-1.98)	-	0.90 (0.87-0.93)	2.47 (2.12-2.88)	0.91 (0.89-0.92)
Morbidity count	0	1.00 (ref)	1.00 (ref)	1.00 (ref)	1.00 (ref)	1.00 (ref)
	1	-	-	0.94 (0.89-0.99)	0.62 (0.51-0.75)	0.98 (0.96-1.00)
	2+	-	-	0.91 (0.84-0.98)	0.99 (0.78-1.26)	0.92 (0.89-0.94)
	1 / 2+	2.27 (1.82-2.83)	4.22 (1.30-13.65)	-	-	-
Flu vaccine in previous 5 years	yes	-	-	1.05 (1.03-1.07)	0.87 (0.78-0.96)	1.26 (1.25-1.27)
Resident in long-term residential home	yes	-	-	-	-	2.38 (2.27-2.49)
Housebound	yes	-	-	-	3.60 (3.05-4.26)	0.87 (0.84-0.91)
Number of SARS-CoV-2 tests	0	1.00 (ref)	1.00 (ref)	1.00 (ref)	1.00 (ref)	1.00 (ref)
	1	-	-	1.32 (1.30-1.35)	1.11 (0.99-1.24)	1.39 (1.37-1.40)
	2	-	-	1.40 (1.36-1.44)	1.54 (1.32-1.78)	1.68 (1.66-1.70)
	3+	-	-	1.49 (1.44-1.54)	4.03 (3.64-4.48)	2.45 (2.42-2.49)
	1 / 2 / 3+	1.77 (1.63-1.93)	1.89 (1.36-2.63)	-	-	-
Pregnancy	yes	-	-	-	-	1.03 (0.98-1.08)

^a Categories separated by "/" were merged due to low event counts.

^b Age terms were fit separately within strata. The age range in the strata is indicated by the suffix following the underscore on the age category label. Strata in which the age range was < 5 years included only a linear age term, otherwise a quadratic age term was included.

Supplementary Table 15: Hazard ratios corresponding to covariates in the adjusted BNT162b2 vs unvaccinated model in the 40-64 years and not clinically vulnerable subgroup.

Variable	Category ^b	COVID-19 hospitalisation	COVID-19 death	Positive SARS-CoV-2 test	Non-COVID-19 death	Any SARS-CoV-2 test
Age ^a	age_40to45	1.08 (0.97-1.21)	-	0.98 (0.97-0.99)	1.22 (1.00-1.48)	1.00 (0.99-1.00)
	age_45to50	0.89 (0.78-1.01)	-	0.98 (0.97-1.00)	1.18 (1.01-1.39)	1.00 (0.99-1.01)
	age_50to55	1.01 (0.89-1.15)	-	0.96 (0.94-0.98)	1.04 (0.90-1.20)	0.99 (0.98-1.00)
	age_55to60	0.97 (0.83-1.13)	-	0.98 (0.96-1.00)	1.04 (0.89-1.22)	0.98 (0.97-0.99)
	age_60to64	0.87 (0.68-1.10)	-	0.94 (0.90-0.98)	1.12 (0.92-1.37)	0.96 (0.95-0.98)
Sex	Female	-	-	1.00 (ref)	-	1.00 (ref)
	Male	-	-	0.73 (0.72-0.75)	-	0.71 (0.70-0.71)
IMD	1 most deprived	1.00 (ref)	-	1.00 (ref)	1.00 (ref)	1.00 (ref)
	2	1.04 (0.82-1.33)	-	1.08 (1.05-1.12)	-	1.13 (1.11-1.15)
	3	-	-	1.12 (1.08-1.15)	-	1.22 (1.20-1.24)
	4	-	-	1.15 (1.12-1.19)	-	1.32 (1.29-1.34)
	5 least deprived	-	-	1.18 (1.14-1.23)	-	1.44 (1.41-1.47)
	3 / 4 / 5 least deprived	1.08 (0.87-1.33)	-	-	-	-
2 / 3 / 4 / 5 least deprived	-	-	-	0.66 (0.53-0.83)	-	
Ethnicity	White	1.00 (ref)	-	1.00 (ref)	1.00 (ref)	1.00 (ref)
	Black	1.43 (1.06-1.94)	-	-	-	0.91 (0.89-0.94)
	South Asian	1.04 (0.77-1.40)	-	-	-	0.57 (0.56-0.58)
	Mixed	0.70 (0.38-1.30)	-	-	-	0.85 (0.82-0.88)
	Other	0.72 (0.44-1.17)	-	-	-	0.63 (0.61-0.65)
	Black / South Asian / Mixed / Other	-	-	0.67 (0.65-0.69)	0.53 (0.39-0.72)	-
BMI	Not obese	1.00 (ref)	-	1.00 (ref)	1.00 (ref)	1.00 (ref)
	Obese I (30-34.9)	2.53 (2.07-3.10)	-	1.27 (1.23-1.30)	-	1.09 (1.07-1.11)
	Obese II (35-39.9)	3.89 (2.97-5.08)	-	-	-	1.06 (1.03-1.09)
	Obese III (40+)	NA (NA-NA)	-	-	-	0.83 (0.70-0.99)
	Obese II (35-39.9) / Obese III (40+)	-	-	1.28 (1.23-1.34)	-	-
	Obese I (30-34.9) / Obese II (35-39.9) / Obese III (40+)	-	-	-	0.70 (0.52-0.94)	-
History of	Chronic heart disease	-	-	-	-	1.02 (0.86-1.22)
	Chronic liver disease	-	-	-	-	0.94 (0.77-1.14)
	Chronic neurological disease	-	-	-	-	0.93 (0.73-1.18)
	Diabetes	1.89 (0.75-4.73)	-	-	-	0.73 (0.61-0.87)
	Immunosuppression	-	-	-	-	1.07 (0.86-1.33)
	Serious mental illness	-	-	-	-	0.60 (0.50-0.71)
Shielding criteria met	yes	-	-	-	-	1.32 (1.18-1.48)
Morbidity count	0	1.00 (ref)	-	1.00 (ref)	1.00 (ref)	1.00 (ref)
	1	-	-	-	-	1.47 (1.26-1.71)
	2+	-	-	-	-	2.30 (1.64-3.23)
	1 / 2+	1.86 (1.02-3.36)	-	1.12 (1.03-1.21)	8.93 (6.41-12.44)	-
Flu vaccine in previous 5 years	yes	-	-	1.04 (1.00-1.08)	-	1.22 (1.20-1.25)
Number of SARS-CoV-2 tests	0	1.00 (ref)	-	1.00 (ref)	1.00 (ref)	1.00 (ref)
	1	-	-	2.11 (2.05-2.17)	-	2.06 (2.03-2.10)
	2	-	-	2.38 (2.28-2.49)	-	2.50 (2.45-2.56)
	3+	-	-	2.65 (2.55-2.76)	-	4.81 (4.71-4.91)
	1 / 2 / 3+	1.41 (1.14-1.75)	-	-	1.73 (1.35-2.23)	-
Pregnancy	yes	-	-	-	-	1.89 (1.77-2.02)

^a Categories separated by "/" were merged due to low event counts.

^b Age terms were fit separately within strata. The age range in the strata is indicated by the suffix following the underscore on the age category label. Strata in which the age range was < 5 years included only a linear age term, otherwise a quadratic age term was included.

Supplementary Table 16: Hazard ratios corresponding to covariates in the adjusted ChAdOx1 vs unvaccinated model in the 40-64 years and not clinically vulnerable subgroup.

Variable	Category ^b	COVID-19 hospitalisation	COVID-19 death	Positive SARS-CoV-2 test	Non-COVID-19 death	Any SARS-CoV-2 test
Age ^a	age_40to45	1.04 (1.00-1.09)	1.34 (0.93-1.95)	0.99 (0.98-0.99)	1.19 (1.00-1.41)	1.00 (0.99-1.00)
	age_45to50	1.03 (0.98-1.08)	0.94 (0.75-1.16)	0.96 (0.96-0.97)	1.16 (1.03-1.32)	0.99 (0.98-0.99)
	age_50to55	1.04 (1.00-1.09)	0.94 (0.76-1.16)	0.95 (0.94-0.95)	1.09 (1.00-1.19)	0.98 (0.97-0.98)
	age_55to60	1.02 (0.98-1.07)	1.08 (0.88-1.32)	0.96 (0.95-0.96)	1.07 (0.99-1.15)	0.99 (0.99-0.99)
	age_60to64	0.99 (0.92-1.07)	1.21 (0.94-1.56)	0.95 (0.93-0.96)	1.09 (0.99-1.20)	0.97 (0.96-0.97)
Sex	Female	1.00 (ref)	-	1.00 (ref)	1.00 (ref)	1.00 (ref)
	Male	1.32 (1.23-1.41)	-	0.91 (0.91-0.92)	1.58 (1.39-1.79)	0.80 (0.79-0.80)
IMD	1 most deprived	1.00 (ref)	1.00 (ref)	1.00 (ref)	1.00 (ref)	1.00 (ref)
	2	0.97 (0.89-1.07)	-	1.09 (1.07-1.11)	0.73 (0.61-0.87)	1.16 (1.15-1.17)
	3	0.91 (0.82-1.01)	-	1.12 (1.10-1.14)	0.60 (0.50-0.72)	1.29 (1.27-1.30)
	4	0.90 (0.81-1.00)	-	1.18 (1.16-1.20)	-	1.40 (1.39-1.42)
	5 least deprived	0.92 (0.82-1.03)	-	1.25 (1.23-1.27)	-	1.53 (1.52-1.55)
	2 / 3 / 4 / 5 least deprived	-	0.77 (0.54-1.11)	-	-	-
Ethnicity	4 / 5 least deprived	-	-	-	0.47 (0.40-0.56)	-
	White	1.00 (ref)	1.00 (ref)	1.00 (ref)	1.00 (ref)	1.00 (ref)
	Black	-	-	0.77 (0.74-0.80)	-	0.84 (0.82-0.85)
	South Asian	-	-	0.66 (0.64-0.68)	-	0.57 (0.56-0.57)
	Mixed	-	-	0.82 (0.78-0.86)	-	0.83 (0.81-0.85)
	Other	-	-	0.59 (0.57-0.62)	-	0.64 (0.63-0.66)
BMI	Black / South Asian / Mixed / Other	1.18 (1.09-1.28)	1.00 (0.64-1.55)	-	0.53 (0.42-0.68)	-
	Not obese	1.00 (ref)	1.00 (ref)	1.00 (ref)	1.00 (ref)	1.00 (ref)
	Obese I (30-34.9)	2.22 (2.06-2.40)	-	1.15 (1.14-1.17)	-	0.98 (0.98-0.99)
	Obese II (35-39.9)	-	-	1.19 (1.16-1.22)	-	0.97 (0.96-0.98)
	Obese III (40+)	-	-	1.34 (1.19-1.51)	-	1.57 (1.13-2.18)
	Obese II (35-39.9) / Obese III (40+)	3.28 (2.96-3.63)	-	-	-	-
	Obese I (30-34.9) / Obese II (35-39.9) / Obese III (40+)	-	3.63 (2.65-4.98)	-	0.74 (0.63-0.86)	-
History of	Chronic respiratory disease	-	-	-	-	1.76 (1.26-2.46)
	Chronic heart disease	-	-	1.14 (1.01-1.30)	-	1.95 (1.41-2.71)
	Chronic liver disease	-	-	1.17 (1.00-1.36)	-	1.85 (1.33-2.57)
	Chronic kidney disease	-	-	-	-	1.53 (1.08-2.17)
	Chronic neurological disease	-	-	-	-	1.65 (1.17-2.31)
	Diabetes	-	-	1.22 (1.08-1.37)	-	1.60 (1.15-2.21)
	Immunosuppression	-	-	-	-	1.94 (1.39-2.71)
	Serious mental illness	-	-	0.81 (0.69-0.95)	-	1.23 (0.89-1.72)
Shielding criteria met	yes	-	-	0.94 (0.81-1.09)	-	1.33 (1.25-1.41)
Morbidity count	0	1.00 (ref)	1.00 (ref)	1.00 (ref)	1.00 (ref)	1.00 (ref)
	1	-	-	-	-	0.59 (0.43-0.82)
	2+	-	-	-	-	0.36 (0.18-0.70)
	1 / 2+	2.09 (1.78-2.46)	2.32 (1.18-4.57)	0.92 (0.84-1.01)	10.38 (8.73-12.34)	-
Flu vaccine in previous 5 years	yes	1.20 (1.08-1.32)	-	1.08 (1.06-1.09)	0.89 (0.77-1.02)	1.31 (1.30-1.32)
Resident in long-term residential home	yes	-	-	-	-	1.47 (1.18-1.84)
Housebound	yes	-	-	-	-	0.60 (0.51-0.71)
Number of SARS-CoV-2 tests	0	1.00 (ref)	1.00 (ref)	1.00 (ref)	1.00 (ref)	1.00 (ref)
	1	1.55 (1.41-1.70)	-	1.42 (1.40-1.44)	-	1.40 (1.39-1.40)
	2	1.61 (1.38-1.88)	-	1.57 (1.54-1.61)	-	1.71 (1.69-1.73)
	3+	1.82 (1.59-2.10)	-	1.99 (1.96-2.03)	-	3.51 (3.48-3.55)
	1 / 2 / 3+	-	1.39 (0.94-2.05)	-	1.22 (1.06-1.41)	-
Pregnancy	yes	-	-	1.41 (1.23-1.61)	-	1.79 (1.67-1.91)

^a Categories separated by " / " were merged due to low event counts.

^b Age terms were fit separately within strata. The age range in the strata is indicated by the suffix following the underscore on the age category label. Strata in which the age range was < 5 years included only a linear age term, otherwise a quadratic age term was included.

Supplementary Table 17: Hazard ratios corresponding to covariates in the adjusted BNT162b2 vs ChAdOx1 model in the 40-64 years and not clinically vulnerable subgroup.

Variable	Category ^b	COVID-19 hospitalisation	COVID-19 death	Positive SARS-CoV-2 test	Non-COVID-19 death	Any SARS-CoV-2 test
Age ^a	age_40to45	1.10 (0.84-1.42)	-	0.98 (0.98-0.99)	1.18 (0.90-1.54)	1.00 (0.99-1.00)
	age_45to50	0.90 (0.70-1.16)	-	0.95 (0.94-0.96)	1.16 (0.94-1.42)	0.98 (0.98-0.99)
	age_50to55	1.10 (0.85-1.43)	-	0.94 (0.94-0.95)	1.11 (0.98-1.26)	0.98 (0.97-0.98)
	age_55to60	0.87 (0.73-1.04)	-	0.96 (0.95-0.96)	1.07 (0.97-1.17)	0.99 (0.99-0.99)
	age_60to64	0.96 (0.74-1.25)	-	0.95 (0.94-0.96)	1.08 (0.96-1.22)	0.97 (0.96-0.97)
Sex	Female	-	-	1.00 (ref)	-	1.00 (ref)
	Male	-	-	0.98 (0.97-0.99)	-	0.81 (0.80-0.81)
IMD	1 most deprived	1.00 (ref)	-	1.00 (ref)	1.00 (ref)	1.00 (ref)
	2	0.60 (0.38-0.96)	-	1.09 (1.07-1.12)	-	1.18 (1.16-1.19)
	3	-	-	1.13 (1.11-1.16)	-	1.32 (1.30-1.33)
	4	-	-	1.19 (1.17-1.22)	-	1.44 (1.43-1.46)
	5 least deprived	-	-	1.28 (1.25-1.30)	-	1.58 (1.56-1.60)
	3 / 4 / 5 least deprived	0.53 (0.36-0.78)	-	-	-	-
	2 / 3 / 4 / 5 least deprived	-	-	-	0.50 (0.41-0.61)	-
Ethnicity	White	1.00 (ref)	-	1.00 (ref)	1.00 (ref)	1.00 (ref)
	Black	-	-	-	-	0.76 (0.74-0.78)
	South Asian	-	-	-	-	0.57 (0.56-0.58)
	Mixed	-	-	-	-	0.83 (0.80-0.85)
	Other	-	-	-	-	0.67 (0.65-0.68)
	Black / South Asian / Mixed / Other	1.95 (1.21-3.16)	-	0.71 (0.69-0.73)	0.56 (0.36-0.85)	-
BMI	Not obese	1.00 (ref)	-	1.00 (ref)	1.00 (ref)	1.00 (ref)
	Obese I (30-34.9)	2.38 (1.70-3.33)	-	1.11 (1.09-1.13)	-	0.97 (0.97-0.98)
	Obese II (35-39.9)	-	-	-	-	0.95 (0.94-0.96)
	Obese III (40+)	-	-	-	-	0.95 (0.87-1.03)
	Obese II (35-39.9) / Obese III (40+)	2.51 (1.52-4.14)	-	1.16 (1.13-1.18)	-	-
	Obese I (30-34.9) / Obese II (35-39.9) / Obese III (40+)	-	-	-	0.78 (0.64-0.95)	-
	History of	Chronic heart disease	-	-	-	-
Chronic liver disease	-	-	-	-	-	1.09 (1.00-1.20)
Chronic neurological disease	-	-	-	-	-	0.97 (0.87-1.08)
Diabetes	NA (NA-NA)	-	-	-	-	0.95 (0.88-1.03)
Immunosuppression	-	-	-	-	-	1.17 (1.05-1.30)
Serious mental illness	-	-	-	-	-	0.71 (0.64-0.78)
Shielding criteria met	yes	-	-	-	-	1.28 (1.20-1.37)
Morbidity count	0	1.00 (ref)	-	1.00 (ref)	1.00 (ref)	1.00 (ref)
	1	-	-	-	-	0.96 (0.90-1.03)
	2+	-	-	-	-	0.98 (0.83-1.15)
	1 / 2+	4.82 (2.60-8.93)	-	0.96 (0.92-1.01)	10.18 (8.04-12.89)	-
Flu vaccine in previous 5 years	yes	-	-	1.11 (1.10-1.13)	-	1.34 (1.33-1.34)
Number of SARS-CoV-2 tests	0	1.00 (ref)	-	1.00 (ref)	1.00 (ref)	1.00 (ref)
	1	-	-	1.27 (1.26-1.29)	-	1.33 (1.32-1.34)
	2	-	-	1.39 (1.36-1.42)	-	1.62 (1.61-1.64)
	3+	-	-	1.85 (1.81-1.88)	-	3.36 (3.33-3.39)
	1 / 2 / 3+	1.97 (1.45-2.68)	-	-	1.10 (0.92-1.31)	-
Pregnancy	yes	-	-	-	-	1.02 (0.93-1.12)

^a Categories separated by "/" were merged due to low event counts.

^b Age terms were fit separately within strata. The age range in the strata is indicated by the suffix following the underscore on the age category label. Strata in which the age range was < 5 years included only a linear age term, otherwise a quadratic age term was included.

Supplementary Table 18: Hazard ratios corresponding to covariates in the adjusted BNT162b2 vs unvaccinated model in the 18-39 years and not clinically vulnerable subgroup.

Variable	Category ^b	COVID-19 hospitalisation	COVID-19 death	Positive SARS-CoV-2 test	Non-COVID-19 death	Any SARS-CoV-2 test
Age ^a	age_18to25	1.09 (1.04-1.15)	-	1.01 (1.00-1.01)	0.92 (0.66-1.28)	1.02 (1.01-1.02)
	age_25to30	1.09 (1.02-1.15)	-	1.01 (1.00-1.02)	0.63 (0.39-1.01)	1.00 (1.00-1.00)
	age_30to36	1.04 (1.01-1.08)	-	1.02 (1.01-1.02)	1.27 (1.03-1.57)	0.99 (0.99-1.00)
	age_36to40	1.08 (1.01-1.15)	-	1.01 (1.00-1.02)	1.04 (0.76-1.42)	1.00 (0.99-1.00)
Sex	Female	1.00 (ref)	-	1.00 (ref)	-	1.00 (ref)
	Male	0.78 (0.71-0.86)	-	0.74 (0.73-0.75)	-	0.77 (0.77-0.78)
IMD	1 most deprived	1.00 (ref)	-	1.00 (ref)	1.00 (ref)	1.00 (ref)
	2	-	-	1.03 (1.01-1.05)	-	1.07 (1.06-1.08)
	3	-	-	1.04 (1.02-1.06)	-	1.14 (1.13-1.15)
	4	-	-	1.02 (1.00-1.04)	-	1.19 (1.18-1.20)
	5 least deprived	-	-	1.03 (1.01-1.05)	-	1.25 (1.24-1.27)
	2 / 3 / 4 / 5 least deprived	0.92 (0.84-1.00)	-	-	0.76 (0.43-1.32)	-
Ethnicity	White	1.00 (ref)	-	1.00 (ref)	1.00 (ref)	1.00 (ref)
	Black / South Asian / Mixed / Other	1.04 (0.95-1.15)	-	0.61 (0.59-0.62)	0.48 (0.23-1.01)	0.73 (0.72-0.73)
BMI	Not obese	1.00 (ref)	-	1.00 (ref)	1.00 (ref)	1.00 (ref)
	Obese I (30-34.9)	-	-	1.20 (1.17-1.22)	-	1.05 (1.04-1.06)
	Obese II (35-39.9) / Obese III (40+)	-	-	1.18 (1.14-1.22)	-	1.04 (1.03-1.06)
	Obese I (30-34.9) / Obese II (35-39.9) / Obese III (40+)	2.24 (2.04-2.47)	-	-	1.40 (0.65-3.02)	-
Morbidity count	0	1.00 (ref)	-	1.00 (ref)	1.00 (ref)	1.00 (ref)
	1 / 2+	1.15 (0.91-1.46)	-	1.04 (0.98-1.10)	13.86 (5.18-37.05)	1.07 (1.04-1.10)
Flu vaccine in previous 5 years	yes	1.00 (0.89-1.13)	-	1.03 (1.01-1.05)	-	0.98 (0.97-0.99)
Number of SARS-CoV-2 tests	0	1.00 (ref)	-	1.00 (ref)	1.00 (ref)	1.00 (ref)
	1	-	-	1.85 (1.82-1.88)	-	1.62 (1.61-1.64)
	2	-	-	2.04 (2.00-2.09)	-	1.94 (1.93-1.96)
	3+	-	-	2.38 (2.33-2.42)	-	3.18 (3.15-3.20)
	1 / 2 / 3+	1.62 (1.49-1.77)	-	-	1.17 (0.63-2.17)	-
Pregnancy	yes	10.36 (9.29-11.56)	-	-	-	1.97 (1.95-2.00)

^a Categories separated by "/" were merged due to low event counts.

^b Age terms were fit separately within strata. The age range in the strata is indicated by the suffix following the underscore on the age category label. Strata in which the age range was < 5 years included only a linear age term, otherwise a quadratic age term was included.