

1 **Herpesvirus Reactivations in Critically-III COVID-19 Patients with Autoantibodies**
2 **Neutralizing Type I Interferons**

3
4 Idoia Busnadiego^{a,†}, Irene A. Abela^{a,b,†}, Pascal M. Frey^{b,c}, Daniel A. Hofmaenner^d,
5 Thomas C. Scheier^b, Reto A. Schuepbach^d, Philipp K. Buehler^d, Silvio D. Brugger^{b,*}, and
6 Benjamin G. Hale^{a,*}

7
8 ^aInstitute of Medical Virology, University of Zurich, 8057 Zurich, Switzerland.

9 ^bDepartment of Infectious Diseases and Hospital Epidemiology, University Hospital
10 Zurich, University of Zurich, 8091 Zurich, Switzerland.

11 ^cDepartment of General Internal Medicine, Inselspital, Bern University Hospital,
12 University of Bern, 3010 Bern, Switzerland.

13 ^dInstitute of Intensive Care Medicine, University Hospital Zurich, University of Zurich,
14 8091 Zurich, Switzerland.

15 [†]These authors share first authorship of this work.

16 *Correspondence: silvio.brugger@usz.ch (SDB) or hale.ben@virology.uzh.ch (BGH).

17
18 Running title: IFN autoantibodies, herpesvirus reactivations, and severe COVID-19

19
20 Keywords: COVID-19; SARS-CoV-2; herpesvirus; CMV; HSV-1; interferon;
21 autoantibodies; neutralization.

22
23 Word count: 231 (abstract), 3977 (main text). References: 32. Figures: 3+2. Tables: 3.

24

ABSTRACT

25

26 Autoantibodies neutralizing the antiviral action of type I interferons (IFNs) have been
27 associated with pre-disposition to severe COVID-19. Here, we screened for such
28 autoantibodies in 103 critically-ill COVID-19 patients in a tertiary intensive care unit in
29 Switzerland. Eleven patients (10.7%), but no healthy donors, had neutralizing anti-IFN α
30 or anti-IFN α /anti-IFN ω IgG in plasma/serum, but anti-IFN IgM or IgA was rare. One
31 patient had non-neutralizing anti-IFN α IgG. Strikingly, all patients with plasma anti-IFN α
32 IgG also had anti-IFN α IgG in tracheobronchial secretions, identifying these
33 autoantibodies at anatomical sites relevant for SARS-CoV-2 infection. Longitudinal
34 analyses revealed patient heterogeneity in terms of increasing, decreasing, or stable
35 anti-IFN IgG levels throughout the length of hospitalization. Notably, presence of anti-
36 IFN autoantibodies in this critically-ill COVID-19 cohort appeared to predict herpesvirus
37 (herpes simplex viruses types 1 and 2, HSV-1/-2; and/or cytomegalovirus, CMV)
38 reactivations, which are linked to worse clinical outcomes. Indeed, all seven tested
39 COVID-19 patients with anti-IFN IgG in our cohort (100%) suffered from one or more
40 herpesvirus reactivations, and analysis revealed that these patients were substantially
41 more likely to experience CMV reactivation than COVID-19 patients without anti-IFN
42 autoantibodies, even when adjusting for systemic steroid treatment (odds ratio 7.28,
43 95%-CI 1.14-46.31, $p=0.036$). As the IFN system deficiency caused by neutralizing anti-
44 IFN autoantibodies likely directly and indirectly exacerbates herpesvirus reactivations in
45 critically-ill patients, early diagnosis of anti-IFN IgG could be rapidly used to inform risk-
46 group stratification and treatment options.

47 **INTRODUCTION**

48

49 Deficiencies in the human antiviral type I interferon (IFN) system can predispose

50 individuals to severe viral disease, most notably during infections with antigenically-

51 novel pathogens to which pre-existing humoral immunity is lacking [1]. The ongoing

52 SARS-CoV-2 pandemic has highlighted a previously unappreciated type of functional

53 IFN deficiency mediated by autoantibodies that neutralize the action of several type I

54 IFNs, particularly the IFN α or IFN ω subtypes [2], and rarely IFN β [3]. Across multiple

55 independent studies, around 10% of critically-ill COVID-19 patients, but not those with

56 very mild infections, have serum autoantibodies that inhibit the antiviral function of IFN α

57 and/or IFN ω *in vitro* [2-7]. Furthermore, presence of anti-IFN autoantibodies has been

58 associated with 20% of all COVID-19 deaths, and this has disproportionately affected

59 older individuals [3]. For example, serum autoantibodies targeting IFN α and/or IFN ω

60 have been found in a very low proportion (0.17%) of healthy individuals under 70 years

61 of age, but their prevalence is increased in the elderly such that prevalence is around

62 4% in those over 70 [3,7]. The presence of these autoantibodies in pre-pandemic

63 samples taken from some individuals who later developed severe COVID-19 suggests

64 that SARS-CoV-2 infection is not directly responsible for their production, but that their

65 presence might predispose to more critical illness [2,3,6,7].

66

67 Importantly, anti-IFN autoantibodies have also been detected in nasal swabs and

68 bronchoalveolar lavages of severe COVID-19 patients [8,9]. The presence of

69 neutralizing autoantibodies targeting type I IFNs is thereby associated with lower levels

70 of IFN-dependent antiviral gene expression signatures in nasal mucosa as well as

71 immune cell dysfunction [2,5-8,10]. These functional consequences likely permit higher
72 and persistent SARS-CoV-2 viral loads in patient nasopharynges, which may potentiate
73 the excessive inflammation that drives some forms of critical disease with this
74 respiratory infection [2,5-8,10]. Koning *et al* also demonstrated that critically-ill COVID-
75 19 patients with neutralizing anti-IFN autoantibodies more frequently display additional
76 severe clinical complications, such as renal failure, bacterial pneumonia and
77 thromboembolic events [5]. Thus, exacerbated SARS-CoV-2 replication in respiratory
78 tissues alone may not fully explain the contributions of anti-IFN autoantibodies to severe
79 COVID-19, and other systemic pathogenic mechanisms may occur. Notably,
80 concomitant herpesvirus (e.g. herpes simplex virus type 1, HSV-1; cytomegalovirus,
81 CMV; varicella-zoster virus, VZV) reactivations have increasingly been recognized to be
82 associated with more severe disease and worse clinical outcomes in critically-ill COVID-
83 19 patients [11]. However, despite the importance of a functional IFN system in
84 maintaining herpesvirus latency in experimental settings [12-14], potential associations
85 between the presence of anti-IFN autoantibodies, herpesvirus reactivations, and clinical
86 outcomes in critically-ill patients have yet to be investigated.

87
88 In this study, we sought to evaluate the prevalence of autoantibodies (IgG, IgM and IgA)
89 targeting and neutralizing type I IFNs in a longitudinally-sampled cohort of 103 critically-
90 ill COVID-19 patients as compared to healthy controls. Furthermore, we aimed to
91 describe variation in COVID-19 disease severity in patients with anti-IFN autoantibodies,
92 and perform exploratory analyses to investigate whether the presence of anti-IFN
93 autoantibodies correlated with herpesvirus reactivations.

94

METHODS

95
96
97 **Cohort Description.** The study was conducted as part of the MicrobiotaCOVID cohort
98 study [15], a single-center, prospective observational study conducted at the Institute of
99 Intensive Care Medicine of the University Hospital Zurich, Switzerland together with the
100 Department of Infectious Diseases and Hospital Epidemiology, University Hospital
101 Zurich, Switzerland, and registered at clinicaltrials.gov (ClinicalTrials.gov Identifier:
102 NCT04410263). We enrolled 103 patients with COVID-19 ARDS (CARDS) who were
103 admitted to the ICU between March 2020 and April 2021. The study was approved by
104 the Local Ethics Committee of the Canton of Zurich, Switzerland (Kantonale
105 Ethikkommission Zurich BASEC ID 2020-00646) in accordance with the provisions of
106 the Declaration of Helsinki and the Good Clinical Practice guidelines of the International
107 Conference on Harmonisation.

108
109 **Healthy Controls.** Plasma samples from 130 anonymized pre-pandemic healthy adults
110 were derived from specimens provided by the Zurich Blood Transfusion Service of the
111 Swiss Red Cross for a previous study [16], and were used with approval of the
112 responsible Local Ethics Committee of the Canton of Zurich, Switzerland (Kantonale
113 Ethikkommission Zurich BASEC ID 2021-00437 and 2021-01138).

114
115 **Data Collection and Covariates.** Clinical and laboratory data were obtained as
116 previously described [15].

117

118 **Sample Collection, Processing and Testing (Virus Diagnostics).** SARS-CoV-2 was
119 detected by real-time RT-PCR as previously described [15]. Moreover, we assessed
120 serum detection and viral load of the following herpesviruses, also as previously
121 described [15]: herpes simplex viruses type 1 and 2 (HSV-1 and -2), cytomegalovirus
122 (CMV), and varicella-zoster virus (VZV). Virus diagnostics were initiated by the treating
123 physicians according to the clinical situation, and were not performed systematically in
124 all patients. Virus reactivation was defined as detection of HSV-1/2, CMV or VZV in
125 blood by PCR and/or a clinical manifestation of virus reactivation with PCR confirmation
126 in a corresponding sample (i.e. herpes labialis, herpes zoster, tracheobronchitis,
127 mucositis including stomatitis and genital manifestations).

128
129 **Sample Processing and Testing (IFN-Binding Antibodies).** A high-throughput bead-
130 based serological assay was established using methods adapted from a previous study
131 [17] (**Supplementary Figure 1A**). Briefly, magnetic beads (MagPlex-C Microspheres,
132 Luminex) were coupled to recombinant human IFNs (IFN α 2: Novusbio NBP2-35893;
133 IFN β : Peprotech 300-02BC; or IFN ω : Novusbio NBP2-34971) or albumin (Sigma-Aldrich
134 70024-90-7) at a concentration of 10 μ g protein per million beads. Bead coating was
135 assessed using mouse monoclonal antibodies against IFN α 2, IFN β or IFN ω (anti-IFN α 2:
136 Novusbio NB100-2479; anti-IFN β : pbl assay science 21465-1; anti-IFN ω : Novusbio
137 NBP3-06154). Patient samples were diluted 1:50 in PBS supplemented with 1% BSA
138 (PBS/BSA) and incubated with 1:1:1:1 mixtures of the coated beads for 1h at room
139 temperature. As a positive control, a human polyclonal anti-IFN α 2b antiserum was used
140 (BEI resources: NR-3072). Beads were washed twice with PBS/BSA before
141 phycoerythrin (PE)-labeled secondary antibodies were added separately at a 1:500

142 dilution in PBS/BSA (Southern Biotech: IgA 205009; IgM 202009; IgG 204009; mouse
143 IgG: BioLegend 405307). After 1h incubation at room temperature, bead mixtures were
144 washed twice in PBS/BSA and samples were analyzed on a FlexMap 3D instrument
145 (Luminex). A minimum of 50 beads per antigen were acquired. Median Fluorescence
146 Intensity (MFI) values from the IFN-coated beads were obtained and calculated relative
147 to the MFI obtained from albumin-coated beads. For each isotype, the mean and
148 standard deviations (SDs) were calculated from the MFI values obtained from the
149 healthy donor samples, and MFI values above 10 SDs for IFN α 2, or 5 SDs for IFN ω
150 were considered positive.

151
152 In validation experiments, the mouse monoclonal IgG antibody targeting human IFN α 2
153 (clone ST29) exhibited specific reactivity to beads coated with human IFN α 2 (as
154 compared to beads coated with albumin), but showed some cross-reactivity to beads
155 coated with human IFN ω , and no cross-reactivity to beads coated with human IFN β
156 (**Supplementary Figure 1B**). Similarly, the mouse monoclonal IgG antibody targeting
157 human IFN β (clone MMHB-15) was highly specific to beads coated with human IFN β ,
158 and gave no reactivity to beads coated with IFN α 2, but showed some cross-reactivity to
159 beads coated with human IFN ω (**Supplementary Figure 1C**). The mouse monoclonal
160 IgG antibody targeting human IFN ω (clone 04) was highly specific to beads coated with
161 human IFN ω , and gave no reactivity to beads coated with either IFN α 2 or IFN β
162 (**Supplementary Figure 1D**). When the assay was validated with human samples,
163 pooled sera from a panel of 20 healthy donors exhibited no IgG binding to either IFN α 2
164 or IFN β beads, but some low reactivity to IFN ω beads (**Supplementary Figure 1E, left**
165 **panel**). The human polyclonal anti-IFN α 2b antiserum had IgG that strongly reacted with

166 the IFN α 2 beads, and to some extent the IFN ω beads, but not with the IFN β beads
167 (**Supplementary Figure 1E, right panel**). Cross-reactivity of IgG antibodies against
168 IFN α 2 and IFN ω is expected given the close relatedness of these type I IFNs and
169 previous descriptions of cross-reactive monoclonal antibodies [2,18].

170

171 **Sample Processing and Testing (IFN-Neutralizing Antibodies).** 2.4×10^4 human
172 embryonic kidney HEK293T cells (ATCC CRL-3216) per well in 96-well plates were
173 reverse-transfected with 30ng of a plasmid containing the firefly luciferase (FF-Luc) gene
174 under control of the IFN-inducible mouse *Mx1* promoter (pGL3-Mx1P-FFluc) (kindly
175 provided by Georg Kochs), together with 4ng of a control plasmid expressing *Renilla*
176 luciferase (Ren-Luc) under a constitutively active promoter (pRL-TK-Renilla). Cells were
177 transfected using FuGene HD (Promega E2311) and incubated at 37°C and 5% CO₂ in
178 Dulbecco's Modified Eagle medium (DMEM, #41966-029, Gibco) supplemented with
179 10% (v/v) fetal calf serum (FCS), 100 U/mL penicillin and 100 mg/mL streptomycin
180 (#15140-122: Gibco). Twenty-four hours post-transfection, patient plasma samples were
181 diluted 1:50 in DMEM supplemented with 10% FCS, 100 U/mL penicillin and 100 mg/mL
182 streptomycin, and incubated for 1h at room temperature with 10, 1 or 0.2 ng/mL of
183 IFN α 2 or IFN ω , prior to their addition to transfected cells. After 24h, cells were lysed for
184 15 min at room temperature and FF-Luc and Ren-Luc activity levels were determined
185 using the Dual-Luciferase Reporter Assay System (E1960, Promega) and a PerkinElmer
186 EnVision plate reader (EV2104) according to the manufacturers' instructions. FF-Luc
187 values were normalized to Ren-Luc values and then to the median luminescence
188 intensity of control wells that had not been stimulated with either IFN α 2 or IFN ω .

189

190 **Statistical Analyses.** The association of anti-IFN autoantibodies and herpesvirus
191 reactivations, with the additional analyses of only CMV or HSV-1/2 reactivation, was
192 examined using logistic regression models. All three models were adjusted for age,
193 gender and treatment with systemic corticosteroids. Only COVID-19 ICU patients tested
194 for virus reactivation (59 out of 103) were included in these analyses. Analyses were
195 performed using SPSS Version 23 (SPSS Science, Chicago, IL, USA) and Stata 16
196 (Stata Corporation, College Station, TX, USA).

197

198

RESULTS

199

200 **Autoantibodies Targeting Type I IFNs in the Plasmas of Critically-Ill COVID-19**

201 **Patients.** We used a multiplexed bead-based assay to screen for autoantibodies
202 targeting type I IFNs (IFN α 2, IFN β and IFN ω) in a cohort of 103 individuals (80 males,
203 aged 31-81; and 23 females, aged 20-87) who were admitted to the ICU of the
204 University Hospital Zurich with severe COVID-19 between March 2020 and April 2021.
205 Plasma samples from 130 pre-pandemic healthy adults (75 males, aged 19-70; and 55
206 females, aged 19-69) were used as a negative control group to set benchmark
207 thresholds. We observed that 11.3% (9/80) of male severe COVID-19 patients and
208 13.0% (3/23) of female severe COVID-19 patients had clearly detectable IgG
209 autoantibodies targeting IFN α 2 in their plasma, which were not present in the plasma of
210 130 healthy donors (**Figure 1A**). Anti-IFN α 2 autoantibodies were largely confined to the
211 IgG class, as few individuals had IgA or IgM reactivity to IFN α 2, although one male
212 COVID-19 patient was highly positive for anti-IFN α 2 IgM (**Figure 1A**). We similarly
213 detected prevalent reactivity of autoantibodies against IFN ω , with detectable IgG

214 autoantibodies in 7.5% (6/80) of male severe COVID-19 patients, and 8.7% (2/23) of
215 female severe COVID-19 patients, although these estimates may be on the low side due
216 to some heterogeneity in the healthy donors (**Figure 1B**), which is consistent with our
217 observed background reactivity to the IFN ω -coated beads (**Supplementary Figure 1E**).
218 Notably, all anti-IFN ω IgG positive samples were also anti-IFN α 2 IgG positive, but 10 of
219 the anti-IFN α 2 IgG positive samples (7 patients) were negative for anti-IFN ω IgG. While
220 IgA autoantibodies targeting IFN ω were observed in a few individuals (6/80 males and
221 2/23 females), it was striking that 5% (4/80) of males were positive for anti-IFN ω IgM,
222 which could be suggestive of recent induction of these anti-IFN ω antibodies (**Figure**
223 **1B**). The identification of anti-IFN autoantibodies in ~10% of severe COVID-19 patients
224 is fully in-line with previous reports from others [2-7].

225
226 **Autoantibodies Targeting Type I IFNs in Tracheobronchial Secretions of Critically-**
227 **III COVID-19 Patients.** In order to have direct functional consequences for SARS-CoV-2
228 replication, autoantibodies targeting type I IFNs would have to be present in either the
229 nasopharynxes or tracheal tracts, as recently demonstrated [8,9]. We therefore used our
230 antibody binding assay to assess anti-IFN α 2 and anti-IFN ω IgG, IgA and IgM
231 autoantibodies in tracheobronchial secretions obtained from 88 of the severe COVID-19
232 patients in our cohort. Stratifying by plasma IgG positivity to either IFN α 2 or IFN ω , it was
233 clear that patients with detectable plasma IgG to type I IFNs (particularly IFN α 2) also
234 had detectable anti-IFN IgG autoantibodies in their tracheobronchial secretions (**Figures**
235 **1C & D**). In contrast, we did not readily detect either IgA or IgM anti-IFN autoantibodies
236 in tracheobronchial secretions. Assessment of anti-IFN β autoantibody levels did not
237 reveal differences between severe COVID-19 patients who were positive or negative for

238 anti-IFN α 2 IgG, either in plasma or tracheobronchial secretion samples
239 (**Supplementary Figures 2A & B**). These data indicate that at least anti-IFN α 2 and
240 anti-IFN ω IgG autoantibodies are present at the physiological sites of SARS-CoV-2
241 replication (i.e. the trachea) where they are most likely to exert functional relevance
242 during infection.

243
244 **Longitudinal Analysis of Autoantibodies Targeting Type I IFNs in Individual**
245 **Critically-III COVID-19 Patients.** For 9 of the 12 severe COVID-19 patients who were
246 positive for anti-IFN α 2 IgG autoantibodies, we had multiple plasma samples that were
247 collected around the time of ICU admission, ICU discharge, or at hospital discharge.
248 These samples spanned between 8 and 58 days post-admittance to ICU, and revealed
249 different patterns of anti-IFN autoantibody levels. For example, in some individuals the
250 levels of anti-IFN autoantibodies appeared to reduce over time, while in others levels
251 increased or remained constant (**Figures 2A and B**). A recent report has also noted
252 either stable or fluctuating levels of anti-IFN α 2 IgG autoantibodies following hospital
253 admission for COVID-19 [7]. Given our lack of ‘baseline’ samples from individuals prior
254 to their infection with SARS-CoV-2, and the fact that our earliest samples are from
255 admittance to ICU (likely a late event in disease progression), it is impossible to
256 conclude whether these anti-IFN autoantibodies pre-existed in these individuals prior to
257 COVID-19. However, the general lack of anti-IFN IgM autoantibodies in most individuals,
258 even at these relatively late times, may be suggestive that the autoantibodies pre-
259 existed.

260

261 **Autoantibodies Targeting Type I IFNs are Mostly Neutralizing.** To functionally
262 characterize the anti-IFN autoantibodies detectable in patient plasma samples, we
263 adapted a standard cell-based luciferase reporter assay that relies on IFN-stimulated
264 activation of the IFN-inducible *Mx1* promoter (**Figure 2C**). Notably, 21/23 patient
265 plasmas with detectable anti-IFN α 2 IgG autoantibodies were able to neutralize the
266 function of IFN α 2 in this assay, irrespective of whether a low concentration of IFN α 2 (0.2
267 ng/mL) or a high concentration of IFN α 2 (10 ng/mL) was used (**Figure 2D**). Strikingly,
268 2/23 patient plasmas (both originating from patient 37, a female in her 70s) did not
269 exhibit neutralization capabilities at any of the IFN α 2 concentrations tested, despite
270 having higher IFN α 2-binding IgG titers than many other samples that did neutralize
271 IFN α 2 (**Figure 2D**). Similar data were obtained when neutralization of IFN ω was
272 assessed, although differences were noted (**Figure 2D**). For example, some samples
273 from patient 19 (a male in his 60s) and patient 31 (a male in his 50s) did not have
274 detectable anti-IFN ω -binding IgG autoantibodies, though they could efficiently neutralize
275 low IFN ω concentrations (0.2 and 1 ng/mL), but not high IFN ω concentrations (10
276 ng/mL), possibly due to cross-reactive anti-IFN α 2-binding antibodies present in the
277 samples or differences in sensitivity between the binding and neutralization assays.

278
279 **Presence of Autoantibodies Targeting Type I IFNs as a Predictor of Herpesvirus**
280 **Reactivation.** We assessed links between having anti-IFN autoantibodies and several
281 patient characteristics associated with worse clinical outcomes in COVID-19 patients
282 admitted to ICU. In the context of patient baseline characteristics, we could not observe
283 any attributes that correlated with the presence of anti-IFN α IgG autoantibodies,
284 including age, gender, body mass index or several chronic underlying conditions, such

285 as diabetes, cancer, or cardiac, liver and renal diseases (**Table 1**). Furthermore, we
286 were unable to observe any clear association between presence of anti-IFN
287 autoantibodies and outcomes such as death, length of hospitalization, length of ICU
288 stay, or duration of ventilation (**Table 2**). We therefore assessed more quantifiable
289 parameters that can impact disease outcomes in ICU, such as the prevalence of
290 bacterial superinfections in the blood or respiratory tract, and the reactivation of
291 herpesviruses such as HSV-1/2, CMV and VZV in the blood. While we were unable to
292 find an association between presence of anti-IFN autoantibodies and the likelihood of
293 bacterial superinfections (**Table 2**), it was notable that presence of anti-IFN
294 autoantibodies was a clear predictor of herpesvirus reactivations (**Table 3 and Figure**
295 **3**). Specifically, in our cohort of 103 patients, a subset of 59 (57%) were tested for HSV-
296 1/2, VZV or CMV reactivation according to the clinical situation. Of these 59 patients,
297 herpesvirus reactivations were observed in 38 (64%) patients, consisting of 30 (51%)
298 patients with HSV-1/2, 21 (36%) with CMV, and none with VZV (**Table 3**). Thirteen
299 (22%) of the 59 patients had both HSV-1/2 and CMV reactivations. Strikingly, all patients
300 in this subset of patients with anti-IFN autoantibodies (n=7, 100%) experienced a
301 herpesvirus reactivation event, although not all patients with reactivation also had anti-
302 IFN autoantibodies (**Table 3 and Figure 3**). Thus, after adjusting for age, gender and
303 systemic corticosteroid treatment, patients with anti-IFN autoantibodies were
304 substantially more likely to experience CMV (odds ratio [OR] 7.28, 95% confidence
305 interval [CI] 1.14 to 46.31, $p = 0.036$) or both HSV-1/2 and CMV (OR 8.47, CI 1.37 to
306 52.31, $p = 0.021$) reactivations, while results for HSV-1/2 reactivations alone were less
307 clear, but certainly suggestive (OR 8.04, CI 0.78 to 82.81, $p = 0.08$). These data indicate
308 that presence of anti-IFN autoantibodies can contribute to herpesvirus reactivations.

309

DISCUSSION

310

311 In this study, we report the presence of IgG autoantibodies that bind and neutralize the
312 type I IFNs, IFN α 2 and IFN ω , in plasmas/sera and tracheobronchial secretions from
313 ~10% of critically-ill COVID-19 patients admitted to a tertiary ICU in Switzerland. Our
314 study demonstrates the importance of longitudinal analysis of autoantibodies directed
315 against type I IFNs, as we observed different patterns of anti-IFN autoantibody levels in
316 individual COVID-19 patients over time, although the significance of this is currently
317 unclear. We further establish a link between the presence of anti-IFN autoantibodies and
318 the potentially dangerous reactivation of latent virus infections, particularly
319 herpesviruses. Anti-IFN autoantibodies were not detected in any of the healthy donors
320 tested, suggesting an enrichment in critically-ill COVID-19 patients that may contribute to
321 the development of severe disease in some individuals. However, we note that (at least
322 within our rather small COVID-19 ICU cohort), presence of anti-IFN autoantibodies was
323 not associated with parameters such as death, length of hospitalization, length of ICU
324 stay, or duration of ventilation. While this broadly contrasts with the findings of others
325 who noted an association between presence of anti-IFN autoantibodies and increased
326 COVID-19 disease severity parameters [2,3,5,7], this difference could be explained by a
327 lack of power in our exploratory study or masking effects of the high standard of care in
328 a high-resource setting. Nevertheless, the proportion of critically-ill COVID-19 patients in
329 our cohort with anti-IFN autoantibodies is remarkably consistent with the findings from
330 several independent severe COVID-19 cohorts recently studied across Europe and
331 North America, despite the use of different detection assays [2-7,19,20]. Indeed, in the
332 future, it will probably be important to have standardized quantitative assays and

333 reporting standards for such anti-IFN autoantibodies, as varying assay sensitivities may
334 mean that their presence is under- or over-estimated. In particular, it was shown that
335 assaying IFN neutralization, rather than simply binding, increases the detection of
336 functionally relevant anti-IFN autoantibodies because such assays are likely to be
337 sensitive to much lower, potentially more physiologically-relevant, concentrations of IFNs
338 [3].

339
340 The most notable clinical feature that we found to be associated with the presence of
341 anti-IFN autoantibodies was the increased probability of herpesvirus reactivations.
342 Indeed, all patients tested in our cohort with anti-IFN autoantibodies demonstrated
343 herpesvirus reactivations (CMV, HSV-1/2, or both), and thus detection of anti-IFN
344 autoantibodies appears to be an excellent predictor of reactivations in our exploratory
345 analysis. Both CMV and HSV-1 reactivations are commonly reported events in patients
346 who have been admitted to ICU, even in those who are otherwise immunocompetent or
347 who have been admitted for non-infectious clinical reasons [21,22]. Furthermore, it is
348 well described that herpesvirus reactivations are associated with worse outcomes in
349 non-COVID patients, with increased length of stay in ICU, increased length of
350 mechanical ventilation, and increased mortality [23-25]. Similarly, HSV-1 and CMV
351 reactivations have been observed in critically-ill COVID-19 ICU patients, and herpesvirus
352 reactivations in these patients has been associated with an increased risk of pneumonia
353 and mortality [11,26]. Thus, it could be that anti-IFN autoantibodies are a predisposing
354 factor for pathogenic herpesvirus reactivations in a subset of COVID-19 patients, and
355 this may have important implications for our understanding of the immunologic
356 phenomena underlying severe COVID-19, risk stratification, and of course possible

357 herpesvirus-directed therapeutic options. Future studies would have to investigate
358 whether screening for anti-IFN autoantibodies, and prophylaxis against herpesviruses,
359 can improve clinical outcomes.

360
361 Mechanistically, it is currently unclear if the general IFN system deficiency caused by
362 presence of anti-IFN autoantibodies is sufficient to trigger herpesvirus reactivations
363 directly (and thus contribute to disease severity in affected COVID-19 patients) or
364 whether herpesvirus reactivations are an epiphenomenon of severe inflammatory
365 disease caused by uncontrolled SARS-CoV-2 replication in these patients, perhaps who
366 are then also more likely to be treated with steroids which can increase herpesvirus
367 reactivations [27]. Interestingly, however, our analysis is adjusted for steroid use,
368 suggesting that the substantially increased likelihood of herpesvirus reactivations in
369 those with anti-IFN autoantibodies is independent of systemic steroid treatments. In
370 addition, some evidence may already suggest a direct contributing role of anti-IFN
371 autoantibodies in being causative in triggering herpesvirus reactivations. For example, in
372 a murine model system, just the absence of functional type I IFNs could cause CMV
373 reactivation from latently-infected endothelial cells [12]. Similarly, experimental depletion
374 of type I IFNs using neutralizing antibodies led to an increased propensity of murine
375 gammaherpesvirus (MHV-68) reactivation in mice [14]. Adverse herpesvirus
376 reactivations in humans have also been reported following treatment regimens involving
377 tofacitinib or baricitinib (two JAK inhibitors that limit functionality of the IFN system)
378 [28,29]. Furthermore, and most importantly perhaps, a recent study of individuals
379 suffering from autoimmune polyendocrine syndrome type I (APS-1; a genetic disease
380 caused by defects in the *AIRE* gene leading to production of autoantibodies targeting

381 type I IFNs) showed that high levels of neutralizing anti-IFN autoantibodies are
382 associated with herpesvirus (VZV) reactivation and severe clinical outcomes [30]. A
383 patient with neutralizing anti-IFN α antibodies and VZV central nervous system
384 vasculopathy has also recently been reported [31]. Thus, it is highly plausible that the
385 neutralizing anti-IFN autoantibodies that we detect in ~10% of critically-ill COVID-19 ICU
386 patients can directly contribute to latent herpesvirus reactivations and subsequent
387 pathogenesis.

388
389 A clear limitation of our study is the low patient sample size in our cohort and single-
390 center study design, that did not provide us with sufficient statistical power to allow
391 detection of small differences in clinical outcomes. This could be improved in future
392 studies with higher participant numbers, and in studies with a pre-defined systematic
393 sampling procedure for the detection of herpesvirus reactivations. Moreover, studies
394 should perhaps investigate associations between the amount of reactivated herpesvirus
395 load, the magnitude of IFN system suppression by anti-IFN autoantibodies,
396 immunomodulation induced by clinicians, and multiple relevant patient outcomes (e.g.
397 length of stay in ICU, length of stay in hospital, duration of mechanical ventilation,
398 duration of ARDS, and mortality). We also acknowledge that our study is limited by the
399 inability to assess levels of anti-IFN autoantibodies in patients prior to SARS-CoV-2
400 infection. Thus, we can currently only speculate that an immunodeficient state was pre-
401 existing in certain patients and exacerbated COVID-19 severity and the likelihood of
402 herpesvirus reactivations.

403

404 In conclusion, detection of anti-IFN autoantibodies that bind and neutralize the antiviral
405 type I IFNs can be performed relatively easily and rapidly, and could be used in future
406 diagnostic efforts to understand the underlying causes of severe disease in both COVID-
407 19 and other infectious disease manifestations [32]. While there are currently no specific
408 therapies available to counteract the potentially pathogenic activities of anti-IFN
409 autoantibodies, their early diagnosis could be used to stratify ‘at-risk’ individuals for
410 prophylactic vaccinations, or particular drug regimens following infections with certain
411 pathogens, although further evidence would be required to assess benefits of such a
412 strategy. Furthermore, as described here, rapid detection of anti-IFN autoantibodies in
413 ICUs may have diagnostic value in assessing predisposition to potentially detrimental
414 herpesvirus reactivations, and thus in prescribing prophylactic therapeutic options to limit
415 their contributions to severe disease.

416

417

ACKNOWLEDGEMENTS

418

419 We thank Beat M. Frey and the Zurich Blood Transfusion Service of the Swiss Red
420 Cross, Switzerland for permitting access to healthy donor samples. We also thank
421 Georg Kochs (University of Freiburg, Germany) for kindly providing the pGL3-Mx1P-
422 FFluc plasmid. Schematics were created with BioRender.com. Work in the BGH
423 laboratory is funded by the Swiss National Science Foundation through grant
424 31003A_182464 to BGH. IAA is supported by a research grant from the Promedica
425 Foundation (#14851M/1). No specific funding was obtained for this project.

426

427

428 **FIGURE LEGENDS**

429

430 **Figure 1. Autoantibodies Targeting Type I IFNs in the Plasmas and**

431 **Tracheobronchial Secretions of Critically-III COVID-19 Patients. (A and B)**

432 Multiplexed bead-based assay to detect IgG, IgA and IgM autoantibodies (autoAbs)

433 against IFN α 2 (A) or IFN ω (B) in patient plasma of patients in ICU with severe COVID-

434 19 (Male: M = 179 samples corresponding to 80 patients; Female: F = 51 samples

435 corresponding to 23 patients) or Healthy Donors (HD = 130 samples). Median

436 Fluorescence Intensity (MFI) Fold Change (FC) of signal derived from IFN-coated beads

437 relative to the MFI of signal derived from albumin-coated beads is shown. Dashed lines

438 indicate 10 SDs (A) or 5 SDs (B) from the mean calculated from HD values for each IFN

439 and each isotype. Values above the dashed lines are considered positive. Percentage of

440 positive patients (not samples) per analyzed group is indicated. **(C and D)** Multiplexed

441 bead-based assay to detect IgG, IgA and IgM autoantibodies against IFN α 2 (C) or IFN ω

442 (D) in tracheobronchial secretions (TBS) of COVID-19 ICU patients described in (A). Pos

443 (positivity) and Neg (negativity) for anti-IFN α 2 IgG (C) or anti-IFN ω IgG (D) in plasma

444 samples from the same patient were used to stratify patients. MFI FC of signal derived

445 from IFN-coated beads relative to the MFI of signal derived from albumin-coated beads

446 is shown. In all panels, red dots indicate the patients/samples that were positive for anti-

447 IFN α 2 IgG autoantibodies in plasma (A), and are denoted simply for reference.

448

449 **Figure 2. Longitudinal Analysis of Plasma Autoantibodies Targeting Type I IFNs in**

450 **Individual Critically-III COVID-19 Patients, and their Neutralization Capacities. (A**

451 **and B)** Longitudinal analysis of plasma anti-IFN α 2 (A) and anti-IFN ω (B) IgG, IgA and

452 IgM autoantibodies (autoAbs) in selected critically-ill COVID-19 patients positive for
453 plasma anti-IFN α 2 IgG. Samples were collected on day of admission to ICU (d1) and as
454 indicated thereafter. MFI FC of signal derived from IFN-coated beads relative to the MFI
455 of signal derived from albumin-coated beads is shown. Dashed lines indicate 10 SDs
456 (IFN α 2) or 5 SDs (IFN ω) from the mean calculated from HD values for each IFN and
457 each isotype in Figure 1A, and are used as threshold values for positivity (filled circles).
458 Internal patient identifier numbers (P) are shown, together with the individual's gender
459 (male, M; female, F). **(C)** Schematic representation of the luciferase reporter-based
460 neutralization assay. HEK293T cells are co-transfected with a pGL3-Mx1P-FFLuc
461 reporter (FF-Luc) plasmid and a constitutively-active pRL-TK-Renilla (Ren-Luc) plasmid.
462 After 24h, cells are incubated with IFN α 2 or IFN ω that have been preincubated with
463 patient plasmas. After a further 24h, cells are lysed, and IFN-stimulated luminescence
464 intensity (FF-Luc) is measured and made relative to the constitutively-active Ren-Luc.
465 **(D)** Results for the neutralization of 10, 1 or 0.2 ng/mL of IFN α 2 or IFN ω in the presence
466 of 1/50 diluted patient plasmas from ICU COVID-19 patients positive for anti-IFN α 2 IgG
467 (n=12), ICU COVID-19 patients negative for anti-IFN α 2 IgG (n=6), or Healthy Donors
468 (n=6). FF-Luc values were made relative to Ren-Luc values and then normalized to the
469 median luminescence intensity of control samples without IFN. Some individual patient
470 (P) and sampling day (d) identifiers (corresponding to Figures 2A and B) are shown for
471 comparison with their IFN α 2 or IFN ω binding data.

472
473 **Figure 3. Presence of Autoantibodies Targeting Type I IFNs as a Predictor of**
474 **Herpesvirus Reactivations in Critically-Ill COVID-19 Patients.** Fifty-nine severe
475 COVID-19 patients in intensive care (ICU) were tested for herpesvirus (HSV-1/2 and

476 CMV) reactivations in their blood by PCR. Pos (positivity) and Neg (negativity) for CMV,
477 HSV-1/2, and CMV and/or HSV-1/2 were used to stratify the results obtained when
478 plasma samples from the same patient were assayed for IgG autoantibodies (autoAbs)
479 targeting IFN α 2 (see Figure 1). Median Fluorescence Intensity (MFI) Fold Change (FC)
480 of signal derived from IFN α 2-coated beads relative to the MFI of signal derived from
481 albumin-coated beads is shown for each individual patient. Values above the dashed
482 line are considered positive (red).

483

484 **Supplementary Figure 1. A Multiplexed Bead-Based Assay to Detect IFN-Binding**

485 **Antibodies. (A)** Schematic representation of the assay principle. Magnetic beads are

486 covalently coated with the indicated IFNs or albumin as a negative control. Samples are

487 then incubated with the coated beads for 1h at room temperature to allow binding of any

488 anti-IFN antibodies present. Following wash steps, PE-labeled secondary antibodies

489 specific for antibody isotypes of interest (IgG, IgA or IgM) are incubated with the beads.

490 After washing, MFI values of bound PE secondary antibodies are measured for each

491 'bead region' on a FlexMap 3D instrument. **(B, C and D)** Assay assessment using

492 mouse monoclonal antibodies. IFN α 2, IFN β , IFN ω and albumin coated beads mixed

493 1:1:1:1 were incubated with serial dilutions of mouse monoclonal antibodies raised

494 against IFN α 2 (B), IFN β (C) or IFN ω (D). Following the assay procedure described in

495 (A), MFI values from IFN-coated beads were obtained and calculated relative to MFI

496 values from albumin-coated beads. FC = fold-change. Data are representative of at least

497 two independent experiments. **(E)** Assay assessment using human plasma samples.

498 IFN α 2, IFN β , IFN ω and albumin coated beads mixed 1:1:1:1 were incubated with serial

499 dilutions of a pool of healthy donor plasmas (left panel) or a human plasma known to

500 have anti-IFN α 2 antibodies (right panel). Following the assay procedure described in
501 (A), MFI values from IFN-coated beads were obtained and calculated relative to MFI
502 values from albumin-coated beads. FC = fold-change. Data are representative of at least
503 two independent experiments.

504

505 **Supplementary Figure 2. Analysis of Autoantibodies Targeting IFN β in the**
506 **Plasmas and Tracheobronchial Secretions of Critically-III COVID-19 Patients.**

507 Multiplexed bead-based assay to detect IgG, IgA and IgM autoantibodies (autoAbs)
508 against IFN β in the plasmas (A) or tracheobronchial secretions (TBS) of COVID-19 ICU
509 patients described in Figure 1A. Pos (positivity) and Neg (negativity) for anti-IFN α 2 IgG
510 in plasma samples from the same patient (results from Figure 1A) were used to stratify
511 patients. MFI FC of signal derived from IFN-coated beads relative to the MFI of signal
512 derived from albumin-coated beads is shown. In all panels, red dots indicate the
513 patients/samples that were positive for anti-IFN α 2 IgG autoantibodies in plasma (Figure
514 1A), and are denoted simply for reference.

515
516
517
518
519
520
521
522
523
524
525
526
527
528
529
530
531
532

TABLES

Table 1: Patient baseline characteristics

Characteristic	All patients (n = 103)	Patients with anti-IFN autoAbs (n = 12)	Patients without anti-IFN autoAbs (n = 91)
	n (%) or median (interquartile range)		
Age, years	66 (56-71)	68 (59-74)	66 (55-70)
Female gender	23 (22)	3 (25)	20 (22)
Body mass index, kg/m ²	28 (24-32)	30 (25-34)	28 (24-31)
Systemic corticosteroids	87 (85)	11 (92)	76 (84)
SAPS II	37 (29-50)	39 (31-52)	37 (29-49)
SOFA Score	7 (3-9)	7 (3-8)	7 (4-10)
Arterial hypertension	50 (49)	6 (50)	44 (48)
Cardiac disease	40 (39)	6 (50)	34 (37)
Cerebrovascular disease	16 (16)	1 (8)	15 (16)
Chronic liver disease	6 (6)	0 (0)	6 (7)
Chronic renal disease	17 (17)	0 (0)	17 (19)
COPD	9 (9)	1 (8)	8 (9)
Diabetes mellitus	31 (30)	4 (33)	27 (30)
History of cancer	12 (12)	1 (8)	11 (12)
Immunosuppression	34 (33)	4 (33)	30 (33)
Solid organ transplant	9 (9)	1 (8)	8 (9)

Abbreviations: IFN = interferon; autoAbs = autoantibodies; SAPS = Simplified Acute Physiology Score; SOFA = Sequential Organ Failure Assessment; COPD = Chronic Obstructive Pulmonary Disease.

Table 2: Description of patient outcomes

Outcome	All patients (n = 103)	Patients with anti-IFN autoAbs (n = 12)	Patients without anti-IFN autoAbs (n = 91)
	n (%) or median (interquartile range)		
Death	23 (22)	3 (25)	20 (22)
Death at 28 days	20 (19)	3 (25)	17 (19)
Death on ICU	22 (21)	3 (25)	19 (21)
Length of hospital stay, days	27 (16-51)	23 (17-29)	27 (16-53)
Length of ICU stay, days	15 (8-28)	15 (7-27)	16 (8-29)
Duration of ventilation, days*	12 (7-19)	17 (9-20)	11 (7-19)
Bacterial superinfection [†]	35 (34)	3 (25)	32 (35)

Abbreviations: IFN = interferon; autoAbs = autoantibodies; ICU = intensive care unit.

*Data only available from 90 patients.

[†]Defined previously [15].

Table 3: Description of herpesvirus reactivations

Herpesvirus reactivation*	All patients [†] (n = 59)	Patients with anti-IFN autoAbs (n = 7)	Patients without anti-IFN autoAbs (n = 52)	n (%)	
Any herpesvirus reactivation	38 (64)	7 (100)	31 (60)		
CMV reactivation	21 (36)	5 (71)	16 (31)		
HSV-1/2 reactivation	30 (51)	6 (86)	24 (46)		
VZV reactivation	0	-	-		

Abbreviations: IFN = interferon; autoAbs = autoantibodies; CMV = cytomegalovirus; HSV-1/2 = herpes simplex virus types 1 or 2; VZV = varicella-zoster virus.

*Testing done by PCR in blood.

[†]Only a subset of patients (59 out of 103) were tested for herpesvirus reactivation according to local clinical practice/needs.

533

REFERENCES

534

535 1. Stertz, S. and Hale, B.G. (2021) Interferon system deficiencies exacerbating
536 severe pandemic virus infections. *Trends in microbiology*.
537 10.1016/j.tim.2021.03.001

538 2. Bastard, P. *et al.* (2020) Autoantibodies against type I IFNs in patients with life-
539 threatening COVID-19. *Science* 370. 10.1126/science.abd4585

540 3. Bastard, P. *et al.* (2021) Autoantibodies neutralizing type I IFNs are present in
541 ~4% of uninfected individuals over 70 years old and account for ~20% of COVID-
542 19 deaths. *Science immunology* 6. 10.1126/sciimmunol.abl4340

543 4. Troya, J. *et al.* (2021) Neutralizing Autoantibodies to Type I IFNs in >10% of
544 Patients with Severe COVID-19 Pneumonia Hospitalized in Madrid, Spain.
545 *Journal of clinical immunology* 41, 914-922. 10.1007/s10875-021-01036-0

546 5. Koning, R. *et al.* (2021) Autoantibodies against type I interferons are associated
547 with multi-organ failure in COVID-19 patients. *Intensive care medicine* 47, 704-
548 706. 10.1007/s00134-021-06392-4

549 6. Wang, E.Y. *et al.* (2021) Diverse functional autoantibodies in patients with
550 COVID-19. *Nature* 595, 283-288. 10.1038/s41586-021-03631-y

551 7. van der Wijst, M.G.P. *et al.* (2021) Type I interferon autoantibodies are associated
552 with systemic immune alterations in patients with COVID-19. *Science*
553 *translational medicine* 13, eabh2624. 10.1126/scitranslmed.abh2624

554 8. Lopez, J. *et al.* (2021) Early nasal type I IFN immunity against SARS-CoV-2 is
555 compromised in patients with autoantibodies against type I IFNs. *The Journal of*
556 *experimental medicine* 218. 10.1084/jem.20211211

- 557 9. de Prost, N. *et al.* (2021) Plasma Exchange to Rescue Patients with
558 Autoantibodies Against Type I Interferons and Life-Threatening COVID-19
559 Pneumonia. *Journal of clinical immunology* 41, 536-544. 10.1007/s10875-021-
560 00994-9
- 561 10. Abers, M.S. *et al.* (2021) Neutralizing type-I interferon autoantibodies are
562 associated with delayed viral clearance and intensive care unit admission in
563 patients with COVID-19. *Immunology and cell biology* 99, 917-921.
564 10.1111/imcb.12495
- 565 11. Meyer, A. *et al.* (2021) HSV-1 reactivation is associated with an increased risk of
566 mortality and pneumonia in critically ill COVID-19 patients. *Crit Care* 25, 417.
567 10.1186/s13054-021-03843-8
- 568 12. Dag, F. *et al.* (2014) Reversible silencing of cytomegalovirus genomes by type I
569 interferon governs virus latency. *PLoS Pathog* 10, e1003962.
570 10.1371/journal.ppat.1003962
- 571 13. Presti, R.M. *et al.* (1998) Interferon gamma regulates acute and latent murine
572 cytomegalovirus infection and chronic disease of the great vessels. *The Journal*
573 *of experimental medicine* 188, 577-588. 10.1084/jem.188.3.577
- 574 14. Barton, E.S. *et al.* (2005) Alpha/beta interferons regulate murine
575 gammaherpesvirus latent gene expression and reactivation from latency. *J Virol*
576 79, 14149-14160. 10.1128/JVI.79.22.14149-14160.2005
- 577 15. Buehler, P.K. *et al.* (2021) Bacterial pulmonary superinfections are associated
578 with longer duration of ventilation in critically ill COVID-19 patients. *Cell Rep Med*
579 2, 100229. 10.1016/j.xcrm.2021.100229

- 580 16. Abela, I.A. *et al.* (2021) Multifactorial seroprofiling dissects the contribution of pre-
581 existing human coronaviruses responses to SARS-CoV-2 immunity. *Nat Commun*
582 12, 6703. [10.1038/s41467-021-27040-x](https://doi.org/10.1038/s41467-021-27040-x)
- 583 17. Liechti, T. *et al.* (2018) Development of a high-throughput bead based assay
584 system to measure HIV-1 specific immune signatures in clinical samples. *Journal*
585 *of immunological methods* 454, 48-58. [10.1016/j.jim.2017.12.003](https://doi.org/10.1016/j.jim.2017.12.003)
- 586 18. Meyer, S. *et al.* (2016) AIRE-Deficient Patients Harbor Unique High-Affinity
587 Disease-Ameliorating Autoantibodies. *Cell* 166, 582-595.
588 [10.1016/j.cell.2016.06.024](https://doi.org/10.1016/j.cell.2016.06.024)
- 589 19. Vazquez, S.E. *et al.* (2021) Neutralizing Autoantibodies to Type I Interferons in
590 COVID-19 Convalescent Donor Plasma. *Journal of clinical immunology* 41, 1169-
591 1171. [10.1007/s10875-021-01060-0](https://doi.org/10.1007/s10875-021-01060-0)
- 592 20. Goncalves, D. *et al.* (2021) Antibodies against type I interferon: detection and
593 association with severe clinical outcome in COVID-19 patients. *Clinical &*
594 *translational immunology* 10, e1327. [10.1002/cti2.1327](https://doi.org/10.1002/cti2.1327)
- 595 21. Zhang, Z. *et al.* (2021) Cytomegalovirus reactivation in immunocompetent
596 mechanical ventilation patients: a prospective observational study. *BMC Infect*
597 *Dis* 21, 1026. [10.1186/s12879-021-06698-0](https://doi.org/10.1186/s12879-021-06698-0)
- 598 22. Depret, F. *et al.* (2021) Characteristics and prognosis of Herpesviridae-related
599 pneumonia in critically ill burn patients. *Burns*. [10.1016/j.burns.2021.09.009](https://doi.org/10.1016/j.burns.2021.09.009)
- 600 23. Walton, A.H. *et al.* (2014) Reactivation of multiple viruses in patients with sepsis.
601 *PLoS One* 9, e98819. [10.1371/journal.pone.0098819](https://doi.org/10.1371/journal.pone.0098819)
- 602 24. Limaye, A.P. *et al.* (2008) Cytomegalovirus reactivation in critically ill
603 immunocompetent patients. *JAMA* 300, 413-422. [10.1001/jama.300.4.413](https://doi.org/10.1001/jama.300.4.413)

- 604 25. Libert, N. *et al.* (2015) Epstein-Barr virus reactivation in critically ill
605 immunocompetent patients. *Biomed J* 38, 70-76. 10.4103/2319-4170.132905
- 606 26. Soderberg-Naucler, C. (2021) Does reactivation of cytomegalovirus contribute to
607 severe COVID-19 disease? *Immun Ageing* 18, 12. 10.1186/s12979-021-00218-z
- 608 27. Franceschini, E. *et al.* (2021) Herpes Simplex Virus Re-Activation in Patients with
609 SARS-CoV-2 Pneumonia: A Prospective, Observational Study. *Microorganisms*
610 9. 10.3390/microorganisms9091896
- 611 28. Deepak, P. *et al.* (2021) Safety of Tofacitinib in a Real-World Cohort of Patients
612 With Ulcerative Colitis. *Clin Gastroenterol Hepatol* 19, 1592-1601 e1593.
613 10.1016/j.cgh.2020.06.050
- 614 29. Valor-Mendez, L. *et al.* (2021) Herpes simplex infection in a patient with
615 rheumatoid arthritis treated with baricitinib: a case report. *Rheumatology (Oxford)*
616 60, e122-e123. 10.1093/rheumatology/keaa521
- 617 30. Hetemaki, I. *et al.* (2021) Patients with autoimmune polyendocrine syndrome type
618 1 have an increased susceptibility to severe herpesvirus infections. *Clin Immunol*
619 231, 108851. 10.1016/j.clim.2021.108851
- 620 31. Ansari, R. *et al.* (2021) Primary and Acquired Immunodeficiencies Associated
621 With Severe Varicella-Zoster Virus Infections. *Clin Infect Dis* 73, e2705-e2712.
622 10.1093/cid/ciaa1274
- 623 32. Bastard, P. *et al.* (2021) Auto-antibodies to type I IFNs can underlie adverse
624 reactions to yellow fever live attenuated vaccine. *The Journal of experimental*
625 *medicine* 218. 10.1084/jem.20202486

626

Figure 1

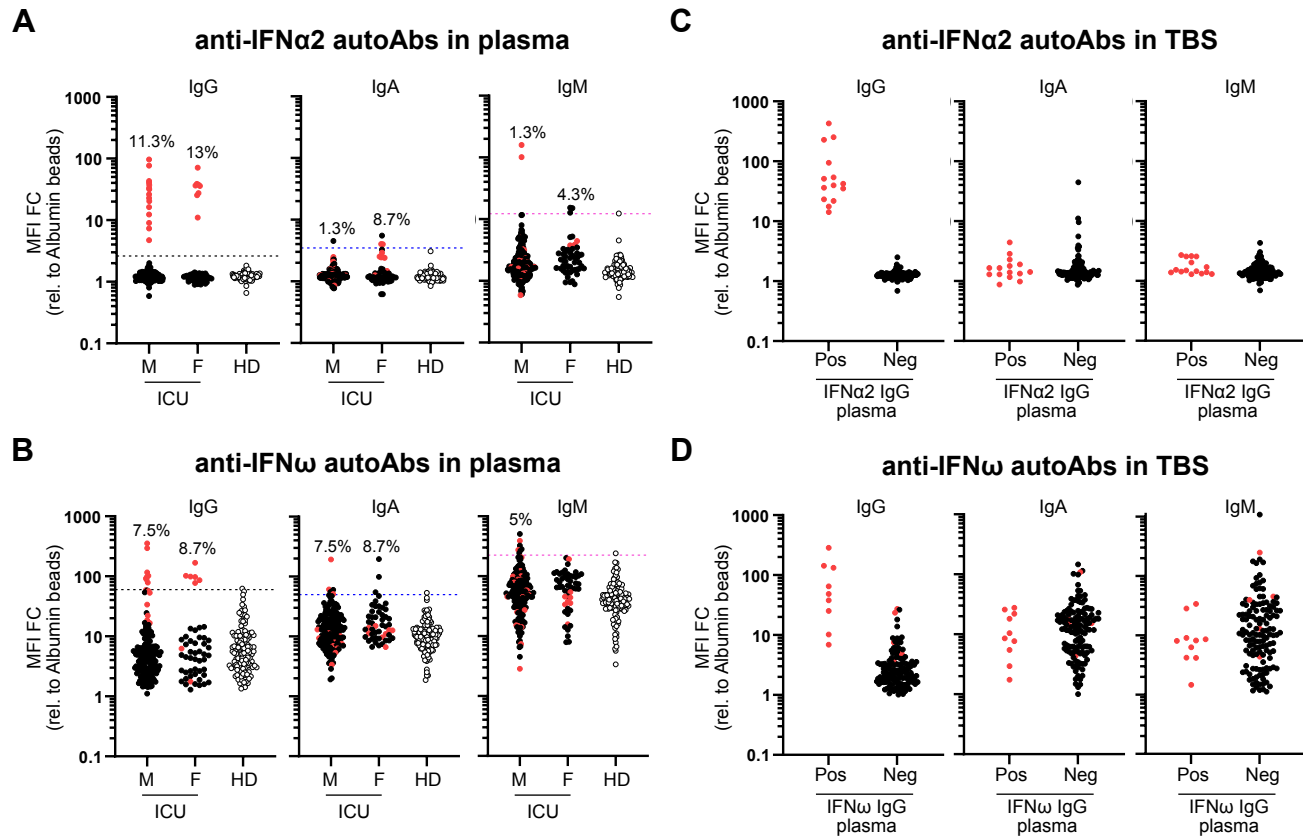


Figure 2

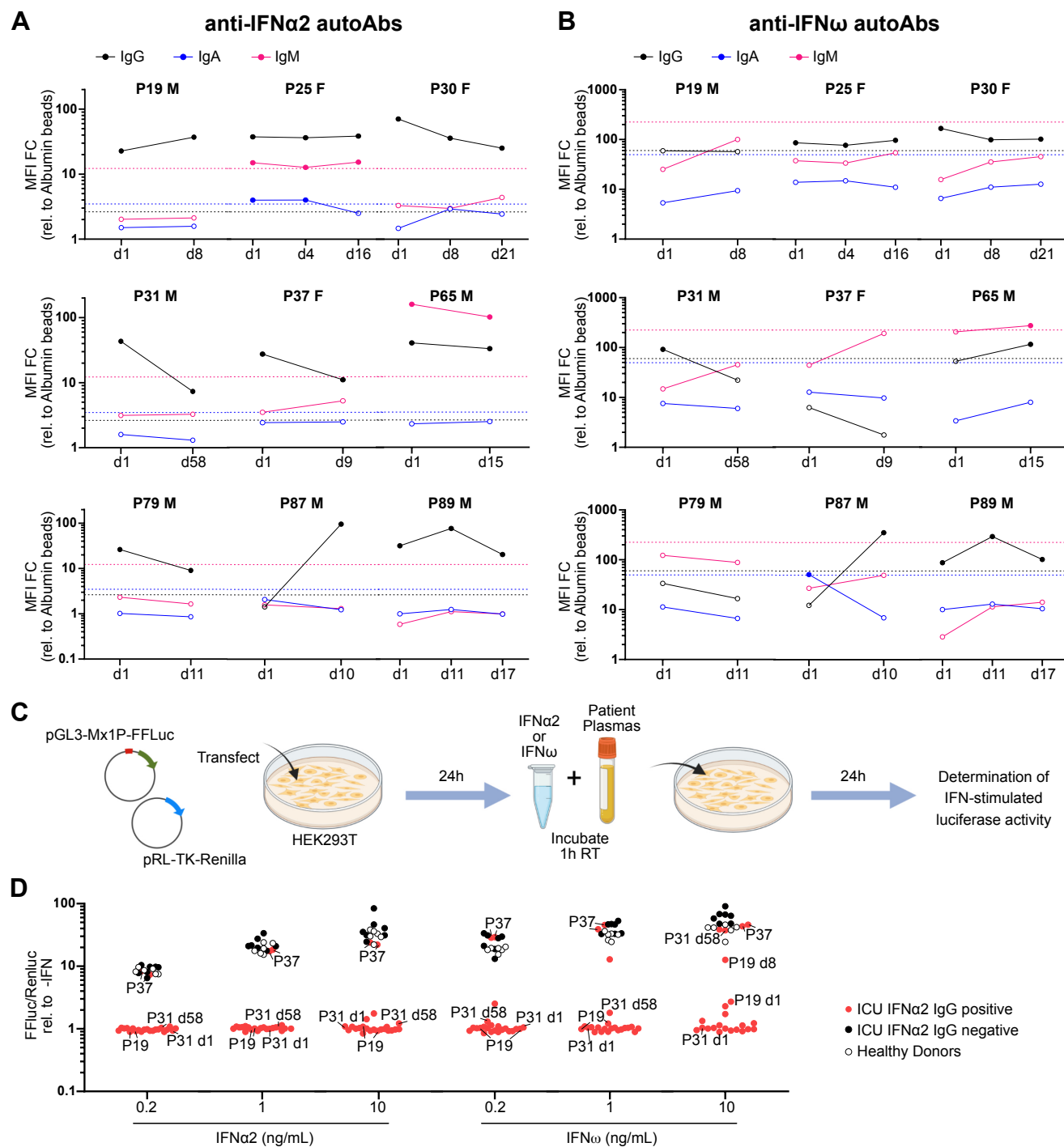


Figure 3

