

**Title:** Use of an extended KDIGO definition to diagnose acute kidney injury in patients with COVID-19: A multinational study of the ISARIC cohort.

**Authors:**

1. Marina Wainstein (corresponding author)
  - a. MBBS
  - b. Faculty of Medicine, University of Queensland, Brisbane, Australia
  - c. West Moreton Kidney Health Service, Brisbane, Queensland, Australia
2. Samuel MacDonald
  - a. Master of Data Science (MS)
  - b. School of Mathematics and Physics, University of Queensland, Brisbane, Australia
3. Daniel Fryer
  - a. Bachelor of Science (hons)
  - b. School of Mathematics and Physics, University of Queensland, Brisbane, Australia
4. Kyle Young
  - a. Bachelor of Mathematics
  - b. School of Mathematics and Physics, University of Queensland, Brisbane, Australia
5. Steven Webb
  - a. PhD
  - b. Australian and New Zealand Intensive Care Research Centre, Monash University, Melbourne, Australia
6. Husna Begum
  - a. PhD
  - b. Australian and New Zealand Intensive Care Research Centre, Monash University, Melbourne, Australia
7. Alistair Nichol
  - a. PhD
  - b. University College Dublin Clinical Research Centre at St Vincent's University Hospital, Dublin, Ireland
  - c. Australian and New Zealand Intensive Care Research Centre, Monash University, Melbourne, Australia
  - d. The Alfred Hospital, Intensive care Unit, Melbourne, Australia
8. James Lee
  - a. BSc
  - b. Centre for Tropical Medicine and Global Health, Nuffield Department of Medicine, University of Oxford, Oxford, United Kingdom
9. Valeria Balan
  - a. BSc
  - b. International Severe Acute Respiratory and emerging Infection Consortium, Centre for Tropical Medicine, University of Oxford, United Kingdom
10. J. Perren Cobb
  - a. MD
  - b. University of Southern California, Los Angeles, California, USA
11. Aidan Burrell
  - a. PhD

NOTE: This preprint reports new research that has not been certified by peer review and should not be used to guide clinical practice.

- b. Australian and New Zealand Intensive Care Research Centre, Monash University, Melbourne, Australia
12. Kalynn Kennon
  - a. BSc
  - b. Infectious Diseases Data Observatory (IDDO), University of Oxford, Oxford, United Kingdom
13. Samantha Strudwick
  - a. BSc
  - b. Infectious Diseases Data Observatory (IDDO), University of Oxford, Oxford, United Kingdom
14. Sadie Kelly
  - a. BSc
  - b. Infectious Diseases Data Observatory (IDDO), University of Oxford, Oxford, United Kingdom
15. Malcolm G. Semple
  - a. PhD
  - b. Professor of Child Health and Outbreak Medicine, University of Liverpool, Liverpool, United Kingdom
16. Laura Merson
  - a. PhD
  - b. Infectious Diseases Data Observatory, Centre for Global Health and Tropical Medicine, University of Oxford, Oxford, United Kingdom
  - c. International Severe Acute Respiratory and emerging Infections Consortium (ISARIC), Pandemic Sciences Institute, University of Oxford, Oxford, United Kingdom
17. Srinivas Murthy
  - a. MD
  - b. Faculty of Medicine, British Columbia, Canada
18. Barbara Citarella
  - a. BSc
  - b. ISARIC Global Support Centre, Centre for Tropical Medicine and Global Health, Nuffield Department of Medicine, University of Oxford, United Kingdom
19. Patrick Rossignol
  - a. PhD
  - b. Université de Lorraine, INSERM, Centre d'Investigations Cliniques-Plurithématique 14-33, INSERM U1116, CHRU Nancy, F-CRIN INI-CRCT (Cardiovascular and Renal Clinical Trialists), Nancy, France
20. Rolando Claire-Del Granado
  - a. MD
  - b. Division of Nephrology Hospital Obrero No 2 - CNS, Cochabamba, Bolivia.
  - c. Universidad Mayor de San Simon, School of Medicine, Cochabamba, Bolivia
21. Sally Shrapnel
  - a. PhD
  - b. Centre for Health Services Research, University of Queensland, Queensland, Australia.
  - c. ARC Centre of Excellence for Engineered Quantum Systems, School of Mathematics and Physics, University of Queensland, Queensland, Australia

The ISARIC Characterization Group. \*

\*The complete list of authors and affiliations are listed at the end of the supplemental material document

Authors for Correspondence and Reprints:

Marina Wainstein

Physics Annexe (6), Level 2

The University of Queensland, St Lucia,  
Brisbane, QLD 4072, Australia.

Phone number: +61 428074457. Email: [marinawainstein@outlook.com](mailto:marinawainstein@outlook.com)

Sally Shrapnel

Parnell Building, room 307

The University of Queensland, St Lucia,  
Brisbane, QLD 4072, Australia.

Email: [s.shrapnel@uq.edu.au](mailto:s.shrapnel@uq.edu.au)

## 1 **Abstract**

2 **Background:** Acute kidney injury (AKI) is one of the most common and significant  
3 problems in patients with COVID-19. However, little is known about the incidence and  
4 impact of AKI occurring in the community or early in the hospital admission. The traditional  
5 KDIGO definition can fail to identify patients for whom hospitalization coincides with  
6 recovery of AKI as manifested by a decrease in serum creatinine (sCr). We hypothesized that  
7 an extended KDIGO definition, adapted from the International Society of Nephrology 0by25  
8 studies, would identify more cases of AKI in patients with COVID-19 and that these may  
9 correspond to community-acquired AKI with similarly poor outcomes as previously reported  
10 in this population.

11  
12 **Methods and Findings:** All individuals in the ISARIC cohort admitted to hospital  
13 with SARS-CoV-2 infection from February 15<sup>th</sup>, 2020, to February 1<sup>st</sup>, 2021, were included  
14 in the study. Data was collected and analysed for the duration of a patient's admission.  
15 Incidence, staging and timing of AKI were evaluated using a traditional and extended  
16 KDIGO (eKDIGO) definition which incorporated a commensurate decrease in serum  
17 creatinine. Patients within eKDIGO diagnosed with AKI by a decrease in sCr were labelled  
18 as deKDIGO. Clinical characteristic and outcomes – intensive care unit (ICU) admission,  
19 invasive mechanical ventilation and in-hospital death - were compared for all three groups of  
20 patients. The relationship between eKDIGO AKI and in-hospital death was assessed using  
21 survival curves and logistic regression, adjusting for disease severity and AKI susceptibility.  
22 75,670 patients from 54 countries were included in the final analysis cohort. Median length of  
23 admission was 12 days (IQR 7, 20). There were twice as many patients with AKI identified

24 by eKDIGO than KDIGO (31.7 vs 16.8%). Those in the eKDIGO group had a greater  
25 proportion of stage 1 AKI (58% vs 36% in KDIGO patients). Peak AKI occurred early in the  
26 admission more frequently among eKDIGO than KDIGO patients. Compared to those  
27 without AKI, patients in the eKDIGO group had worse renal function on admission, more in-  
28 hospital complications, higher rates of ICU admission (54% vs 23%) invasive ventilation  
29 (45% vs 15%) and increased mortality (38% vs 19%). Patients in the eKDIGO group had a  
30 higher risk of in-hospital death than those without AKI (adjusted OR: 1.78, 95% confidence  
31 interval: 1.71-1.8, p-value < 0.001). Mortality and rate of ICU admission were lower among  
32 deKDIGO than KDIGO patients (25% vs 50% death and 35% vs 70% ICU admission) but  
33 significantly higher when compared to patients with no AKI (25% vs 19% death and 35% vs  
34 23% ICU admission) (all p values <  $5 \times 10^{-5}$ ). Limitations include ad hoc sCr sampling,  
35 exclusion of patients with less than two sCr measurements, and limited availability of sCr  
36 measurements prior to initiation of acute dialysis.

37

38 **Conclusions:** The use of an extended KDIGO definition to diagnose AKI in this  
39 population resulted in a significantly higher incidence rate compared to traditional KDIGO  
40 criteria. These additional cases of AKI appear to be occurring in the community or early in  
41 the hospital admission and are associated with worse outcomes than those without AKI.

42

43

44

## 45 **Author Summary**

### 46 **Why was this study done?**

47

- 48 • Previous studies have shown that acute kidney injury (AKI) is a common problem
- 49 among hospitalized patients with COVID-19.
- 50 • The current biochemical criteria used to diagnose AKI may be insufficient to capture
- 51 AKI that develops in the community and is recovering by the time a patient presents
- 52 to hospital.
- 53 • The use of an extended definition, that can identify AKI both during its development
- 54 and recovery phase, may allow us to identify more patients with AKI. These patients
- 55 may benefit from early management strategies to improve long term outcomes.

56

### 57 **What did the researchers do and find?**

58

- 59 • In this study, we examined AKI incidence, severity and outcomes among a large
- 60 international cohort of patients with COVID-19 using both a traditional and extended
- 61 definition of AKI.
- 62 • We found that using the extended definition identified almost twice as many cases of
- 63 AKI than the traditional definition (31.7 vs 16.8%).
- 64 • These additional cases of AKI were generally less severe and occurred earlier in the
- 65 hospital admission. Nevertheless, they were associated with worse outcomes,
- 66 including ICU admission and in-hospital death (adjusted odds ratio: 1.78, 95%
- 67 confidence interval: 1.71-1.8, p-value < 0.001) than those with no AKI.

68

### 69 **What do these findings mean?**

70

- 71 • The current definition of AKI fails to identify a large group of patients with AKI that
- 72 appears to develop in the community or early in the hospital admission.
- 73 • Given the finding that these cases of AKI are associated with worse admission
- 74 outcomes than those without AKI, identifying and managing them in a timely manner
- 75 is enormously important.

76

## 77 **Introduction**

78 Acute kidney injury (AKI) has been identified as one of most common and significant  
79 problems in hospitalized patients with COVID 19 [1, 2]. Observational studies have  
80 consistently shown that patients who develop AKI are more likely to be admitted to an intensive  
81 care unit (ICU), require invasive mechanical ventilation, have longer lengths-of-stay (LOS)  
82 and increased mortality [1-3]. Autopsy studies point to several potential pathophysiological  
83 pathways for AKI including acute tubular injury from hemodynamic shifts, local inflammatory  
84 and microvascular thrombotic changes from immune dysregulation as well as direct viral  
85 invasion through the angiotensin converting receptor enzyme-2 (ACE-2) receptor [4].

86 Until now, most studies looking at AKI in COVID-19 have used the traditional Kidney  
87 Disease Improving Global Outcomes (KDIGO) definition which relies on the rise in serum  
88 creatinine, either by 0.3 mg/dl in 48 hours or by 50% from baseline over a seven-day period  
89 [5]. While this definition is likely to adequately capture AKI that develops during a hospital  
90 stay, it may fail to identify cases that have developed in the community and are potentially  
91 recovering by the time a patient presents to the hospital, thereby underestimating the true  
92 incidence of AKI. To address this potential limitation of the KDIGO definition, the  
93 International Society of Nephrology (ISN) 0by25 studies added a commensurate fall in serum  
94 creatinine to their definition of AKI [6, 7]. Using this modified criterion in the feasibility study,  
95 it was found that approximately 40% of the community-acquired AKI (CA-AKI) could be  
96 identified by a fall in the level of serum creatinine early in the admission making it a more  
97 comprehensive and inclusive definition [7].

98 The integration of this additional criteria to identify kidney injury has also been  
99 highlighted as one of the research priorities in the recent KDIGO report on controversies in  
100 AKI [8]. While other papers have indicated the need to revise various aspects of the KDIGO  
101 criteria, aside from the 0by25 studies, a decrease in serum creatinine as a marker of AKI has

102 only been explored in infants and neonates, prompting a need for further research in this area  
103 [9, 10].

104         Given the global impact of SARS-CoV-2 infection across all income and resource  
105 settings, combined with the potentially significant burden of AKI occurring in the community,  
106 we hypothesized that an extended KDIGO definition, adapted from the ISN 0by25 studies,  
107 would identify more cases of AKI in patients with COVID-19. We also hypothesized that the  
108 additional cases identified using this extended criterion may correspond to CA-AKI and be  
109 associated with similarly poor outcomes as those shown in previous studies of AKI in COVID-  
110 19 [1-3]

## 111 **Methods**

### 112 **Study Design**

113         The International Severe Acute Respiratory and Emerging Infection Consortium  
114 (ISARIC) - World Health Organization (WHO) Clinical Characterization Protocol for Severe  
115 Emerging Infections provided a framework for prospective, observational data collection on  
116 hospitalized patients. The protocol, case report forms and study information are available  
117 online (<https://isaric.org/research/covid-19-clinical-research-resources>). This protocol builds  
118 on the ISARIC/WHO COVID-19 Clinical Characterisation Protocol (CCP) and associated data  
119 collection forms already in operation, the Core and Rapid case report forms (CRFs) [11], of  
120 which only the core CRF was used in this study. These CRFs were developed to standardize  
121 clinical data collection on patients admitted with suspected or confirmed COVID-19. They are  
122 used to collect data on demographics, pre-existing comorbidities and risk factors, signs and  
123 symptoms experienced during the acute phase, and care and treatments received during



124 hospitalization. Collection of serum creatinine measurements across all sites was not time-  
125 standardized and the frequency of collection was left to the discretion of each site.

126 This observational study required no change to clinical management and permitted  
127 patient enrollment in other research projects. Protocol and consent forms are available  
128 at <https://isaric.net/ccp/>. While written consent was obtained in most cases, for some sites the  
129 local regulators and ethics committees approved oral consent, or waiver of consent, in the  
130 context of the pandemic.

131 The ISARIC-WHO Clinical Characterisation Protocol was approved by the World  
132 Health Organization Ethics Review Committee (RPC571 and RPC572). Ethical approval was  
133 obtained for each participating country and site according to local requirements (S1 statement).  
134 A prospective analysis plan was used to guide the design of this study [12]. Only the first of  
135 the three aims proposed was addressed in this study and the addition of an extended AKI  
136 definition was adapted from the 0by25 studies in order to better capture AKI occurring in the  
137 community or early in the hospital admission [6].

138

## 139 **Study population**

### 140 **Inclusion & exclusion criteria**

141

142 All individuals in the ISARIC database with clinically diagnosed or laboratory-  
143 confirmed SARS-CoV-2 infection admitted to hospital from February 15<sup>th</sup>, 2020, to February  
144 1<sup>st</sup> 2021 (criteria for clinical diagnosis in S1 Table) were included in the study cohort. Patients  
145 younger than 18 years of age and those on maintenance kidney replacement therapy (dialysis  
146 or transplantation) were excluded. Patients with fewer than two serum creatinine (sCr)

147 measurements during the admission and those with incomplete or unreliable laboratory data  
148 were also excluded (Fig 1).

149

150 Fig 1. Flowchart of the study

151 Fig 2. Visual representation of the relationships between serum creatinine trajectories within  
152 the AKI groups (KDIGO, eKDIGO, deKDIGO).

153

154

## 155 **AKI definition and diagnosis**

156

157 AKI was identified biochemically using sCr and incidence rates calculated accordingly.

158 Patients' sCr levels throughout the admission were used to classify them as (i) not having AKI,

159 (ii) having AKI according to the traditional KDIGO definition, or (iii) AKI according to the

160 extended KDIGO (eKDIGO) criteria. For the purpose of this analysis, those patients in the

161 eKDIGO group with AKI diagnosed by a fall in sCr have been labelled as deKDIGO (Fig 2).

162 The KDIGO definition of AKI requires a patient to have an increase in sCr by 0.3 mg/dl within

163 48 hours or an increase to more than 1.5 times the baseline sCr within 7 days [5]. The eKDIGO

164 definition of AKI was adapted from the ISN's 0by25 trial and includes a fall in sCr by 0.3

165 mg/dl within 48 hours or a fall to more than 1.5 times the baseline sCr within 7 days [7]. Acute

166 kidney injury was then graded according to the corresponding staging criteria for each

167 definition (Table 1). A moving window of 48 hours and 7 days was applied during the entire

168 length of a patient's admission to find the first instance of AKI as well as the highest stage

169 reached. In the case of AKI diagnosis using an increment in sCr, the minimum sCr within that

170 window was deemed as the baseline, while for a diagnosis using the decrement, the maximum

171 sCr within that window became the baseline. Information on the timing of acute RRT was not

172 always available so it was not possible to determine whether patients receiving RRT fell into

173 the KDIGO or deKDIGO portions of the eKDIGO group. Given the low likelihood that a  
 174 patient with a falling creatinine would be given acute RRT, all RRT patients were categorized  
 175 as being stage 3 AKI within the KDIGO group. Urine volume criteria was not used for either  
 176 definition as it was not routinely collected in the CRF.

177

178 **Table 1. Acute Kidney Injury Definitions**

	KDIGO	eKDIGO
Diagnosis	Increase in sCr by $\geq 26.5$ $\mu\text{mol/l}$ within 48 hrs; or  Increase in sCr to $\geq 1.5$ times baseline, which is known or presumed to have occurred within the prior 7 days.	Increase in sCr by $\geq 26.5$ $\mu\text{mol/l}$ OR <u>decrease in sCr by <math>\geq 26.5</math> <math>\mu\text{mol/l}</math> within 48 hrs;</u> or  Increase in sCr to $\geq 1.5$ times baseline OR <u>a decrease in sCr to <math>\geq 1.5</math> times baseline, which is known or presumed to have occurred within the prior 7 days.*</u>
Staging**		
Stage 1	sCr increase to 1.5 – 1.9 times baseline; or  Increase in sCr by $\geq 26.5$ $\mu\text{mol/l}$	sCr increase to 1.5 – 1.9 times baseline or an increase in sCr by $\geq 26.5$ $\mu\text{mol/l}$ ; <u>or</u> <u>sCr decrease to 1.5 – 1.9 times baseline</u> <u>or a decrease by <math>\geq 26.5</math> <math>\mu\text{mol/l}</math></u>
Stage 2	sCr increase to 2.0 to 2.9 times baseline	sCr increase to 2.0 to 2.9 times baseline; or <u>sCr decrease 2.0 to 2.9 times baseline</u>
Stage 3	sCr increase to 3.0 times baseline; or	sCr increase to 3.0 times baseline or sCr increase by $\geq 353.6$ $\mu\text{mol/l}$ or Initiation of renal replacement therapy; or

	sCr increase by $\geq 353.6$ $\mu\text{mol/l}$ or Initiation of renal replacement therapy	<u>sCr decrease to 3.0 times baseline or sCr decrease to <math>\geq 353.6</math> <math>\mu\text{mol/l}</math></u>
--	-------------------------------------------------------------------------------------------------	-----------------------------------------------------------------------------------------------------------------------

179 \*deKDIGO refers to the sub-group of patients diagnosed with AKI by eKDIGO ONLY by the decrease  
180 in sCr (see Fig 2)

181 \*\* Time frames for sCr increases in each stage mirror the pattern for diagnosis: Baseline  
182 increases must occur within the previous 7 days and absolute sCr increases (by 26.5  $\mu\text{mol/l}$  and  
183 353.6  $\mu\text{mol/l}$ ) must occur within 48 hrs.

184 eKDIGO = extended KDIGO definition, sCr = serum creatinine

185

## 186 **Data collection and time to peak AKI**

187 This study analysed data up until February 15<sup>th</sup> on patients for whom data collection  
188 commenced on or before February 1<sup>st</sup>, 2021. Data was collected and analysed for the duration  
189 of a patient's admission. A 14-day rule was applied to focus analysis on individuals who were  
190 more likely to have a recorded outcome. By excluding patients enrolled during the last 14 days,  
191 we aimed to reduce the number of incomplete data records, thus improving the generalizability  
192 of the results and the accuracy of the outcomes.

193 For both groups (KDIGO and eKDIGO) time to peak AKI from hospital admission and  
194 the respective counts for each day were compared by visual inspection of histograms using the  
195 first day that a peak stage was reached. From the pre-specified data collected in the CRF  
196 information was obtained on demographics and country income level divided according to the  
197 World Bank classification (<https://data.worldbank.org/country>) into high income (HIC), upper  
198 middle income (UMIC) and low and low middle-income countries (LLMIC) merged into a  
199 single category. Information was obtained on patients' comorbidities and pre-admission  
200 medications as well as signs and symptoms, observations and laboratory results on admission.  
201 Information collected during the admission included acute treatments, complications and  
202 outcomes. Outcomes included an admission to the ICU, use of invasive mechanical ventilation,  
203 and either discharge, transfer to another hospital, in-hospital death or remaining in hospital.

204 Definitions of all collected variables are provided in S2 Table. A comparison of these variables  
205 was performed among patients with eKDIGO AKI and no AKI; deKDIGO and KDIGO AKI;  
206 deKDIGO AKI and no AKI.

207 Patients were classed as lost to follow up if either a) they were transferred to another  
208 facility, or b) they had an unknown outcome and the last date upon which any data was recorded  
209 for them was 45 days or before the date of data extraction. Patients with unknown outcome  
210 where the last recorded data was less than 45 days old are categorized as receiving ongoing  
211 care. Data on readmissions could not be obtained for patients in many countries.

212

## 213 **Statistical analysis**

214 For continuous variables, characteristics were reported as medians and interquartile  
215 ranges (IQR). For categorical variables, counts and percentages were reported. All statistical  
216 tests were carried out as pairwise independent samples comparisons. Due to the number of  
217 statistical tests conducted, a conservative Bonferroni adjusted significance level of  $\alpha_b 5 \times 10^{-5}$   
218 was used to limit the study wide probability of a type I error [13]. For continuous variables, the  
219 Mann-Whitney U test was used. For categorical variables, Pearson's chi-squared test was  
220 performed. Missing data was reported as a percentage of the relevant cohort for each variable  
221 in Table 2, 3 and 4 and further information on its distribution is presented in S3 Table.

222 A logistic regression was fitted to assess the association between eKDIGO AKI with  
223 in-hospital mortality. A t-test with a significance threshold of 0.001 was used to assess the  
224 significance of predictors. MICE imputation was used to address variable missingness and a  
225 sensitivity analysis showing the results without imputation can be found in S4 Table.  
226 Adjustments were made for factors indicating disease severity such as: admission to ICU; need for  
227 mechanical ventilation; corticosteroid and antifungal treatment; complicating factors such as

228 bacterial pneumonia, cardiac arrest, coagulation disorders and rhabdomyolysis. Adjustment was  
229 also made for factors known to increase the susceptibility to AKI such as age, sex, diabetes, chronic  
230 cardiac disease, chronic pulmonary disease, chronic kidney disease (CKD), hypertension, obesity,  
231 and use of renin–angiotensin system blockers (RAS blockers) before admission [5].

232 The relationship between eKDIGO AKI and in-hospital death and discharge was  
233 described with a survival curve approximated using the Aalen–Johansen estimator, a multistate  
234 version of the Kaplan–Meier estimator [14]. The follow-up period began on the day of hospital  
235 admission and ended on the day of either discharge or death, or 28 days post admission if no  
236 event had occurred. Discharge from hospital was considered an absorbing state (once  
237 discharged there was no readmission or death).

238 All statistical analyses were performed using the R statistical programming language,  
239 version 4.0.2 [15, 16]. This study is reported as per the Strengthening the Reporting of  
240 Observational Studies in Epidemiology (STROBE) guideline (S5 Table).

241

## 242 **Results**

243 From February 15<sup>th</sup>, 2020, to February 1<sup>st</sup>, 2021, data were collected for 418,111  
244 individuals admitted to hospital with clinically suspected or laboratory confirmed SARS-COV-  
245 2 infection from 1,609 sites and 54 countries. Of these, 75,670 were used as the analysis cohort  
246 (Fig. 1). The median length of admission was 12 days (IQR 7, 20 days). Missing data was less  
247 than 10% for most variables—although averaging 20% for symptoms on admission—and  
248 distributed evenly between groups for those with higher missingness levels (S3 Table).

249

## 250 **Incidence, staging and timing of peak AKI**

251 With the KDIGO definition 12,704 (16.8 %) patients were identified as having AKI  
252 during their admission. Using the extended KDIGO definition a total of 23,892 (31.6%)  
253 patients were diagnosed with AKI. A breakdown of the top ten contributing countries for  
254 patients in each group can be found in S1 Fig. The peak stages of AKI with KDIGO and  
255 eKDIGO respectively were: stage 1 - 36% and 58%, stage 2 - 17% and 15% and stage 3 - 47%  
256 and 27% with a total of 4,252 patients (overall 5.6 % of all patients) requiring acute dialysis  
257 (Fig 3). Peak sCr occurred more frequently on days 3 and 6 from admission and diminished  
258 significantly after day 10 using a KDIGO definition. With the extended definition an additional  
259 4,019 patients had AKI on day 3 (70% of all AKI diagnosed on that day) and 1,808 on day 6  
260 (64% of all AKI on that day) (Fig 4).

261

262 **Fig 3. Staging of AKI using KDIGO and eKDIGO definitions**

263 **Fig 4. Day of peak AKI using KDIGO and eKDIGO definitions**

264

## 265 **Demographic and clinical characteristics**

266 Baseline characteristics at hospital admission, acute interventions, complications and  
267 outcomes for patients with AKI diagnosed by eKDIGO vs no AKI, KDIGO vs deKDIGO and  
268 deKDIGO vs no AKI are provided in Tables 2, 3 and 4 respectively. A majority of patients  
269 from all groups were from high income countries with the highest proportion from LLMICs in  
270 the KDIGO group (12% vs 5% in eKDIGO and 9% deKDIGO). Significantly more stage 1  
271 AKI could be seen in the deKDIGO than in KDIGO patients (82% vs 36%) while more severe  
272 forms of AKI (stage 3), were dominant in the KDIGO group even after excluding RRT patients  
273 (13% vs 4%).

274 Chronic kidney disease (CKD), hypertension, type 2 diabetes and obesity were  
 275 significantly more common in patients who developed AKI. The use of ACE inhibitors and  
 276 angiotensin receptor blockers (ARB) medications were more common in the KDIGO group as  
 277 compared to both the deKDIGO group and the no AKI group. Similarly, administration of  
 278 antifungal agents and corticosteroids were more common among KDIGO-diagnosed than  
 279 deKDIGO AKI patients and patients without AKI. Signs, symptoms and observations at  
 280 admission were very similar in all groups. At presentation, patients with eKDIGO AKI had a  
 281 higher blood urea nitrogen (median 10.9 vs 6.4 mmol/l), C-reactive protein (median 95.3 vs 69  
 282 mg/L) and creatinine (110 umol/l vs 80 umol/l) and lower estimated glomerular filtration rate  
 283 (eGFR, estimated with CKD-EPI equation) (54 ml/min/1.73m<sup>2</sup> vs 80 ml/min/1.73m<sup>2</sup>)  
 284 compared to those without AKI. Renal function on admission was worse in the deKDIGO  
 285 group than in KDIGO patients (eGFR 48 ml/min vs 62 ml/min). In general, patients with AKI  
 286 were more likely to have complications during their hospital stay.

287

288 **Table 2. Characteristics of patients with no AKI and AKI diagnosed by eKDIGO**

289 **definition**

		eKDIGO AKI	No AKI	Missingness (%)	P-value
<b>Total Count</b>					
		23892	51772		
<b>Demographics</b>					
	Age, yr, median (IQR)	68 (57.5, 78.5)	67 (53.5, 80.5)	0	p < 5x10 <sup>-5</sup>
	Female (%)	8375 (35)	22031 (43)	0	p < 5x10 <sup>-5</sup>
<b>Country Income Level, n (%)</b>					
	High Income	20513 (86)	45686 (88)	0	p < 5x10 <sup>-5</sup>
	Upper Middle Income	1129 (5)	4176 (8)	0	p < 5x10 <sup>-5</sup>
	Low & low middle income	2161 (9)	1876 (4)	0	p < 5x10 <sup>-5</sup>



<b>AKI Grades &amp; RRT, n (%)</b>					
	AKI Stage 1	13746 (58)	-	0	
	AKI Stage 2	3682 (15)	-	0	
	AKI Stage 3*	6464 (27)	-	0	
	RRT	4252 (19)	-	9	
<b>Comorbidities**, n (%)</b>					
	Chronic Kidney Disease	4059 (18)	5433 (11)	7	$p < 5 \times 10^{-5}$
	Chronic Cardiac Disease	6225 (27)	12772 (25)	2	
	Chronic Pulmonary Disease	2975 (13)	6853 (14)	7	
	Hypertension	8447 (50)	16429 (43)	28	$p < 5 \times 10^{-5}$
	Dementia	1835 (9)	4315 (9)	12	
	Diabetes -type 2	7996 (36)	14051 (29)	6	$p < 5 \times 10^{-5}$
	Liver disease	842 (4)	1653 (3)	4	
	Malnutrition	501 (2)	963 (2)	12	
	Obesity	3792 (19)	6404 (15)	18	$p < 5 \times 10^{-5}$
<b>Medications on Admission, n (%)</b>					
	NSAIDS	1382 (9)	2610 (8)	35	
	ACEi	2795 (17)	5177 (15)	33	$p < 5 \times 10^{-5}$
	ARBs	1942 (12)	3101 (9)	33	$p < 5 \times 10^{-5}$
<b>Signs &amp; Symptoms on Admission, n (%)</b>					
	Altered Consciousness / Confusion	4295 (23)	8267 (20)	19	$p < 5 \times 10^{-5}$
	Diarrhea	3740 (20)	7983 (19)	19	
	Fever	13333 (64)	30320 (66)	12	
	Vomiting /nausea	3387 (18)	8099 (19)	19	
	Muscle aches/joint pain	3643 (21)	8853 (23)	25	$p < 5 \times 10^{-5}$
	Headache	1779 (10)	5367 (14)	26	$p < 5 \times 10^{-5}$
	Sore Throat	1564 (9)	3579 (9)	27	
	Cough	12961 (63)	29549 (65)	12	
	Shortness of breath	14824 (72)	30334 (66)	12	$p < 5 \times 10^{-5}$
	Runny nose	634 (4)	1547 (4)	28	
<b>Observations on Admission, median (IQR)</b>					
	Temperature, C	37.2 (36.2, 38.2)	37.3 (36.8, 37.8)	3	
	Systolic BP, mmHg	127 (110.5, 143.5)	130 (115.0, 145.0)	6	$p < 5 \times 10^{-5}$
	Diastolic BP, mmHg	71 (61.5, 80.5)	75 (66.0, 84.0)	7	$p < 5 \times 10^{-5}$
	Heart rate, BPM	93 (79.5, 106.5)	90 (77.5, 102.5)	7	$p < 5 \times 10^{-5}$

	Respiratory rate, per min	23 (18.5, 27.5)	21 (17.0, 25.0)	13	$p < 5 \times 10^{-5}$
	Oxygen saturation, %	94 (90.5, 97.5)	95 (92.5, 97.5)	7	$p < 5 \times 10^{-5}$
<b>Laboratory Results on Admission, median (IQR)</b>					
	WBC ( $\times 10^9/L$ )	8.2 (5.2, 11.2)	7 (4.5, 9.5)	15	$p < 5 \times 10^{-5}$
	BUN (mmol/L)	10.9 (4.9, 16.9)	6.4 (3.9, 8.9)	22	$p < 5 \times 10^{-5}$
	Potassium (mmol/L)	4.2 (3.8, 4.6)	4.1 (3.7, 4.4)	15	$p < 5 \times 10^{-5}$
	CRP (mg/L)	95.3 (19.8, 170.8)	69 (12.5, 125.5)	22	$p < 5 \times 10^{-5}$
	sCr ( $\mu\text{mol/l}$ )	110 (67.5, 152.5)	80 (63.0, 97.0)	11	$p < 5 \times 10^{-5}$
	eGFR ( $\text{ml/min/1.73m}^2$ )	54.4 (29.4, 79.4)	80.3 (61.8, 98.8)	12	$p < 5 \times 10^{-5}$
<b>Admission Treatment, n (%)</b>					
	Antiviral and COVID-19 targeting agents	5349 (26)	9145 (21)	16	$p < 5 \times 10^{-5}$
	Antibiotic agents	20905 (93)	40430 (86)	8	$p < 5 \times 10^{-5}$
	Antifungal agents	2459 (11)	2564 (6)	11	$p < 5 \times 10^{-5}$
	Corticosteroids	8553 (38)	11905 (25)	9	$p < 5 \times 10^{-5}$
<b>Complications**, n (%)</b>					
	Bacterial pneumonia	3827 (19)	5761 (13)	16	$p < 5 \times 10^{-5}$
	Cardiac arrest	1482 (7)	988 (2)	10	$p < 5 \times 10^{-5}$
	Coagulation disorder	1414 (7)	1321 (3)	15	$p < 5 \times 10^{-5}$
	Rhabdomyolysis	292 (1)	177 (0.4)	15	$p < 5 \times 10^{-5}$
<b>Outcomes, n (%)</b>					
	ICU admission	12579 (54)	11652 (23)	2	$p < 5 \times 10^{-5}$
	Invasive mechanical ventilation	10264 (45)	7294 (15)	7	$p < 5 \times 10^{-5}$
	Length of Stay (median, IQR)	13 (5.5, 20.5)	11 (5.0, 17.0)	4	$p < 5 \times 10^{-5}$
	Still in hospital	1342 (6)	1871 (4)	2	$p < 5 \times 10^{-5}$
	Transferred	2052 (9)	3457 (7)	2	$p < 5 \times 10^{-5}$
	Discharged	10942 (47)	35744 (70)	2	$p < 5 \times 10^{-5}$
	Death	8890 (38)	9794 (19)	2	$p < 5 \times 10^{-5}$

290 \*Stage 3 includes patients requiring RRT  
 291 \*\* Definitions of comorbidities, complications and outcomes from the CRFs are presented in S2 Table  
 292 RRT = Renal replacement therapy; ACEi = Angiotensin converting enzyme inhibitors; ARBs = Angiotensin II  
 293 receptor blockers; NSAIDs = non-steroidal anti-inflammatories; BUN = Blood urea nitrogen; CRP = C-reactive  
 294 protein; WBC = White blood cell; sCr = serum creatinine; eGFR = estimated glomerular filtration rate  
 295 (estimated using the CKD-EPI equation)  
 296

297 **Table 3. Characteristics of patients with AKI diagnosed using KDIGO definition versus**  
 298 **patients diagnosed with AKI by eKDIGO only by the decrease in serum creatinine**  
 299 **(deKDIGO).**

		<b>deKDIGO</b>	<b>KDIGO</b>	<b>Missingness (%)</b>	<b>P-value</b>
<b>Total Count</b>					
		11188	12704		
<b>Demographics</b>					
	Age, yr, median (IQR)	70 (58.5, 81.5)	66 (56.5, 75.5)	0	p < 5x10 <sup>-5</sup>
	Female (%)	4259 (38)	4116 (33)	0	p < 5x10 <sup>-5</sup>
<b>Country Income Level, n (%)</b>					
	High Income	10229 (92)	10284 (81)	0	p < 5x10 <sup>-5</sup>
	Upper Middle Income	333 (3)	796 (6)	0	p < 5x10 <sup>-5</sup>
	Low & low middle income	600 (5)	1561 (12)	0	p < 5x10 <sup>-5</sup>
<b>AKI Grades &amp; RRT, n (%)</b>					
	AKI Stage 1	9169 (82)	4577 (36)	0	p < 5x10 <sup>-5</sup>
	AKI Stage 2	1520 (14)	2162 (17)	0	p < 5x10 <sup>-5</sup>
	AKI Stage 3 (No RRT)	499 (4)	1713 (13)	0	p < 5x10 <sup>-5</sup>
	AKI Stage 3 (with RRT)	-	5965 (47)	0	
	RRT	-	4252 (36)	9	
<b>Comorbidities*, n (%)</b>					
	Chronic Kidney Disease	1797 (17)	2262 (19)	7	
	Chronic Cardiac Disease	2989 (27)	3236 (26)	2	
	Chronic Pulmonary Disease	1599 (15)	1376 (12)	7	p < 5x10 <sup>-5</sup>
	Hypertension	3902 (48)	4545 (51)	28	
	Dementia	1316 (13)	519 (5)	12	p < 5x10 <sup>-5</sup>
	Diabetes -type 2	3443 (33)	4553 (39)	6	p < 5x10 <sup>-5</sup>
	Liver disease	380 (4)	462 (4)	4	
	Malnutrition	284 (3)	217 (2)	12	p < 5x10 <sup>-5</sup>
	Obesity	1504 (16)	2288 (22)	18	p < 5x10 <sup>-5</sup>
<b>Medications on Admission, n (%)</b>					
	NSAIDS	627 (8)	755 (9)	35	
	ACEi	1407 (18)	1388 (17)	33	

	ARBs	926 (12)	1016 (12)	33	
<b>Signs &amp; Symptoms on Admission, n (%)</b>					
	Altered Consciousness / Confusion	2510 (28)	1785 (18)	19	p < 5x10 <sup>-5</sup>
	Diarrhea	1885 (21)	1855 (18)	19	p < 5x10 <sup>-5</sup>
	Fever	6126 (64)	7207 (65)	12	
	Vomiting /nausea	1758 (20)	1629 (16)	19	p < 5x10 <sup>-5</sup>
	Muscle aches/joint pain	1617 (20)	2026 (22)	25	
	Headache	743 (9)	1036 (11)	26	
	Sore Throat	628 (8)	936 (10)	27	p < 5x10 <sup>-5</sup>
	Cough	5979 (63)	6982 (64)	12	
	Shortness of breath	6680 (70)	8144 (73)	12	p < 5x10 <sup>-5</sup>
	Runny nose	230 (3)	404 (4)	28	p < 5x10 <sup>-5</sup>
<b>Observations on Admission, median (IQR)</b>					
	Temperature, °C	37.3 (36.3, 38.3)	37.2 (36.2, 38.2)	3	
	Systolic BP, mmHg	123 (107.0, 139.0)	130 (113.5, 146.5)	6	p < 5x10 <sup>-5</sup>
	Diastolic BP, mmHg	70 (60.5, 79.5)	72 (62.0, 82.0)	7	p < 5x10 <sup>-5</sup>
	Heart rate, BPM	92 (78.5, 105.5)	93 (79.5, 106.5)	7	
	Respiratory rate, per min	22 (17.5, 26.5)	24 (19.5, 28.5)	13	p < 5x10 <sup>-5</sup>
	Oxygen saturation, %	95 (92.0, 98.0)	94 (91.0, 97.0)	7	p < 5x10 <sup>-5</sup>
<b>Laboratory results on admission, median (IQR)</b>					
	WBC (x10 <sup>9</sup> /L)	8.1 (5.1, 11.1)	8.3 (5.3, 11.3)	15	
	BUN (mmol/L)	11.6 (5.6, 17.6)	10.1 (4.1, 16.1)	22	p < 5x10 <sup>-5</sup>
	Potassium (mmol/L)	4.1 (3.7, 4.5)	4.2 (3.8, 4.6)	15	
	CRP (mg/L)	89 (20.0, 158.0)	102.7 (21.2, 184.2)	22	p < 5x10 <sup>-5</sup>
	sCr, (umol/l)	119 (80.0, 158.0)	101 (56.5, 145.5)	11	p < 5x10 <sup>-5</sup>
	eGFR, ml/min/1.73m <sup>2</sup>	48.6 (28.1, 69.1)	62.1 (34.6, 89.6)	12	p < 5x10 <sup>-5</sup>
<b>Admission Treatment, n (%)</b>					
	Antiviral and COVID-19 targeting agents	2057 (22)	3292 (31)	16	p < 5x10 <sup>-5</sup>
	Antibiotic agents	9718 (91)	11187 (94)	8	p < 5x10 <sup>-5</sup>
	Antifungal agents	698 (7)	1761 (16)	11	p < 5x10 <sup>-5</sup>
	Corticosteroids	3248 (31)	5305 (45)	9	p < 5x10 <sup>-5</sup>
<b>Complications*, n (%)</b>					

	Bacterial pneumonia	1461 (15)	2366 (22)	16	$p < 5 \times 10^{-5}$
	Cardiac arrest	280 (3)	1202 (10)	10	$p < 5 \times 10^{-5}$
	Coagulation disorder	402 (4)	1012 (9)	15	$p < 5 \times 10^{-5}$
	Rhabdomyolysis	70 (0.7)	222 (2)	15	$p < 5 \times 10^{-5}$
<b>Outcomes, n (%)</b>					
	ICU admission	3836 (35)	8743 (70)	2	$p < 5 \times 10^{-5}$
	Invasive mechanical ventilation	2596 (24)	7668 (63)	7	$p < 5 \times 10^{-5}$
	Length of Stay (median, IQR)	12 (5.5, 18.5)	15 (6.0, 24.0)	4	$p < 5 \times 10^{-5}$
	Still in hospital	540 (5)	802 (7)	2	$p < 5 \times 10^{-5}$
	Transferred	924 (8)	1128 (9)	2	
	Discharged	6761 (62)	4181 (34)	2	$p < 5 \times 10^{-5}$
	Death	2692 (25)	6198 (50)	2	$p < 5 \times 10^{-5}$

300 \* Definitions of comorbidities, complications and outcomes from the CRFs are presented in S2 Table  
 301 RRT = Renal replacement therapy; ACEi = Angiotensin converting enzyme inhibitors; ARBs = Angiotensin II  
 302 receptor blockers; NSAIDs = non-steroidal anti-inflammatories; BUN = Blood urea nitrogen; CRP = C-reactive  
 303 protein; WBC = White blood cell; sCr = serum creatinine; eGFR = estimated glomerular filtration rate  
 304 (estimated using the CKD-EPI equation)  
 305

306 **Table 4. Characteristics of patients with AKI diagnosed using eKDIGO only by the**  
 307 **decrease in serum creatinine (deKDIGO) and no AKI.**

		deKDIGO	No AKI	Missingness (%)	P-value
<b>Total Count</b>					
		11188	51772		
<b>Demographics</b>					
	Age, yr, median (IQR)	70 (58.5, 81.5)	67 (53.5, 80.5)	0	$p < 5 \times 10^{-5}$
	Female (%)	4259 (38)	22031 (43)	0	$p < 5 \times 10^{-5}$
<b>Country Income Level, n (%)</b>					
	High Income	10229 (92)	45686 (88)	0	$p < 5 \times 10^{-5}$
	Upper Middle Income	333 (3)	4176 (8)	0	$p < 5 \times 10^{-5}$
	Low & low middle income	600 (5)	1876 (4)	0	$p < 5 \times 10^{-5}$
<b>AKI Grades &amp; RRT, n (%)</b>					
	AKI Stage 1	9169 (82)	0 (0.0)	0	
	AKI Stage 2	1520 (14)	0 (0.0)	0	
	AKI Stage 3*	499 (4)	0 (0.0)	0	
	RRT	-	-	9	
<b>Comorbidities*, n (%)</b>					

	Chronic Kidney Disease	1797 (17)	5433 (11)	7	$p < 5 \times 10^{-5}$
	Chronic Cardiac Disease	2989 (27)	12772 (25)	2	
	Chronic Pulmonary Disease	1599 (15)	6853 (14)	7	
	Hypertension	3902 (48)	16429 (43)	28	$p < 5 \times 10^{-5}$
	Dementia	1316 (13)	4315 (9)	12	$p < 5 \times 10^{-5}$
	Diabetes -type 2	3443 (33)	14051 (29)	6	$p < 5 \times 10^{-5}$
	Liver disease	380 (4)	1653 (3)	4	
	Malnutrition	284 (3)	963 (2)	12	$p < 5 \times 10^{-5}$
	Obesity	1504 (16)	6404 (15)	18	
<b>Medications on Admission, n (%)</b>					
	NSAIDS	627 (8)	2610 (8)	35	
	ACEi	1407 (18)	5177 (15)	33	$p < 5 \times 10^{-5}$
	ARBs	926 (12)	3101 (9)	33	$p < 5 \times 10^{-5}$
<b>Signs &amp; Symptoms on Admission, n (%)</b>					
	Altered Consciousness / Confusion	2510 (28)	8267 (20)	19	$p < 5 \times 10^{-5}$
	Diarrhea	1885 (21)	7983 (19)	19	$p < 5 \times 10^{-5}$
	Fever	6126 (64)	30320 (66)	12	
	Vomiting /nausea	1758 (20)	8099 (19)	19	
	Muscle aches/joint pain	1617 (20)	8853 (23)	25	$p < 5 \times 10^{-5}$
	Headache	743 (9)	5367 (14)	26	$p < 5 \times 10^{-5}$
	Sore Throat	628 (8)	3579 (9)	27	
	Cough	5979 (63)	29549 (65)	12	
	Runny nose	230 (3)	1547 (4)	28	$p < 5 \times 10^{-5}$
<b>Observations on Admission, median (IQR)</b>					
	Temperature, °C	37.3 (36.3, 38.3)	37.3 (36.8, 37.8)	3	
	Systolic BP, mmHg	123 (107.0, 139.0)	130 (115.0, 145.0)	6	$p < 5 \times 10^{-5}$
	Diastolic BP, mmHg	70 (60.5, 79.5)	75 (66.0, 84.0)	7	$p < 5 \times 10^{-5}$
	Heart rate, BPM	92 (78.5, 105.5)	90 (77.5, 102.5)	7	$p < 5 \times 10^{-5}$
	Respiratory rate, per min	22 (17.5, 26.5)	21 (17.0, 25.0)	13	$p < 5 \times 10^{-5}$
	Oxygen saturation, %	95 (92.0, 98.0)	95 (92.5, 97.5)	7	$p < 5 \times 10^{-5}$
<b>Laboratory results on admission, median (IQR)</b>					
	WBC ( $\times 10^9/L$ )	8.1 (5.1, 11.1)	7 (4.5, 9.5)	15	$p < 5 \times 10^{-5}$

	BUN (mmol/L)	11.6 (5.6, 17.6)	6.4 (3.9, 8.9)	22	$p < 5 \times 10^{-5}$
	Potassium (mmol/L)	4.1 (3.7, 4.5)	4.1 (3.7, 4.4)	15	$p < 5 \times 10^{-5}$
	CRP (mg/L)	89 (20.0, 158.0)	69 (12.5, 125.5)	22	$p < 5 \times 10^{-5}$
	sCr (umol/L)	119 (80.0, 158.0)	80 (63.0, 97.0)	11	$p < 5 \times 10^{-5}$
	eGFR, (ml/min/1.73m <sup>2</sup> )	48.6 (28.1, 69.1)	80.3 (61.8, 98.8)	12	$p < 5 \times 10^{-5}$
<b>Admission Treatment, n (%)</b>					
	Antiviral and COVID-19 targeting agents	2057 (22)	9145 (21)	16	
	Antibiotic agents	9718 (91)	40430 (86)	8	$p < 5 \times 10^{-5}$
	Antifungal agents	698 (7)	2564 (6)	11	$p < 5 \times 10^{-5}$
	Corticosteroids	3248 (31)	11905 (25)	9	$p < 5 \times 10^{-5}$
<b>Complications**, n (%)</b>					
	Bacterial pneumonia	1461 (15)	5761 (13)	16	$p < 5 \times 10^{-5}$
	Cardiac arrest	280 (3)	988 (2)	10	
	Coagulation disorder	402 (4)	1321 (3)	15	$p < 5 \times 10^{-5}$
	Rhabdomyolysis	70 (0.7)	177 (0.4)	15	
<b>Outcomes, n (%)</b>					
	ICU admission	3836 (35)	11652 (23)	2	$p < 5 \times 10^{-5}$
	Invasive mechanical ventilation	2596 (24)	7294 (15)	7	$p < 5 \times 10^{-5}$
	Length of Stay (median, IQR)	12 (5.5, 18.5)	11 (5.0, 17.0)	4	$p < 5 \times 10^{-5}$
	Still in hospital	540 (5)	1871 (4)	2	$p < 5 \times 10^{-5}$
	Transferred	924 (8)	3457 (7)	2	$p < 5 \times 10^{-5}$
	Discharged	6761 (62)	35744 (70)	2	$p < 5 \times 10^{-5}$
	Death	2692 (25)	9794 (19)	2	$p < 5 \times 10^{-5}$

308 \*Does not include RRT

309 \*\* Definitions of comorbidities, complications and outcomes from the CRFs are presented in S2 Table

310 RRT = Renal replacement therapy; ACEi = Angiotensin converting enzyme inhibitors; ARBs = Angiotensin II  
 311 receptor blockers; NSAIDs = non-steroidal anti-inflammatories; BUN = Blood urea nitrogen; CRP = C-reactive  
 312 protein; WBC = White blood cell; sCr = serum creatinine; eGFR = estimated glomerular filtration rate  
 313 (estimated using the CKD-EPI equation)

314

## 315 Clinical outcomes

316 Patients who developed AKI using eKDIGO were more likely to be admitted to the

317 ICU (54%), require invasive mechanical ventilation (45%) and die during their admission

318 (38%) compared to patients without AKI. After adjusting for disease severity, this group of  
 319 patients had a higher risk of in-hospital death (OR: 1.77, 95% CI: 1.7-1.85, p-value < 0.001)  
 320 (Table 5) which is further illustrated in the survival curves shown in Fig 5. Patients in the  
 321 deKDIGO group appeared to have better outcomes and less mortality than those diagnosed  
 322 by KDIGO criteria, but still had significantly worse outcomes and mortality than patients  
 323 with no AKI (Tables 3 and 4).

324

325 **Table 5. Logistic regression fitted to assess the association between eKDIGO AKI with**  
 326 **in-hospital mortality**

Variable	Odds Ratio	95% Confidence Interval		P value
		Lower	Upper	
(Intercept)	0.051	0.048	0.054	< 0.001
AKI eKDIGO	1.776	1.705	1.85	< 0.001
Female	0.78	0.749	0.812	< 0.001
Age 18-65 (ref)	1.0	-	-	-
Age 65 - 85	3.969	3.778	4.17	< 0.001
Age 85+	7.773	7.285	8.294	< 0.001
Chronic Kidney Disease	1.317	1.248	1.39	< 0.001
Chronic Cardiac Disease	1.331	1.271	1.393	< 0.001
Chronic Pulmonary Disease	1.514	1.436	1.595	< 0.001
Hypertension	0.955	0.896	1.019	0.153
Obesity	0.904	0.841	0.972	0.008
Diabetes Type 2	1.153	1.096	1.214	< 0.001
Pre-admission ACEi & ARBs	0.867	0.812	0.926	< 0.001
Treatment with corticosteroids	1.14	1.091	1.192	< 0.001
Treatment with antifungal agents	1.218	1.138	1.305	< 0.001
ICU Admission	1.585	1.482	1.695	< 0.001
Mechanical Ventilation	2.188	2.037	2.349	< 0.001
Cardiac Arrest	19.261	16.821	22.055	< 0.001
Bacterial Pneumonia	1.222	1.16	1.287	< 0.001
Coagulation disorder	1.372	1.253	1.501	< 0.001
Rhabdomyolysis	1.17	0.947	1.444	0.145

327 MiCE imputation used for variable missingness

328 ACEi: Angiotensin converting enzyme inhibitors; ARBs: Angiotensin receptor blockers



329

330 **Fig 5. Aalen- Johansen survival plot.** Outcomes among patients with AKI diagnosed using  
331 eKDIGO criteria and no AKI. Confidence bars are used to illustrate a 95% confidence  
332 interval.  
333

## 334 **Discussion**

335 In the largest, multinational cohort of hospitalized patients with COVID-19 it was found  
336 that an extended KDIGO criteria for the diagnosis of AKI, which includes a fall in sCr during  
337 admission, identified almost twice as many cases of AKI than the traditional KDIGO definition.  
338 The majority of these additional cases were stage 1 AKI, occurring early in the admission,  
339 supporting the hypothesis that they may represent recovering CA-AKI. This group had  
340 comparatively worse outcomes than patients without AKI, making their identification and  
341 exploration in future studies enormously important.

342 The estimated incidence of KDIGO AKI, 16.8%, is consistent with that reported in the  
343 first systematic review of AKI in COVID-19 patients [17], while the incidence of eKDIGO  
344 AKI fits those studies from the larger NYC cohorts which had similar rates of ICU admission  
345 [2, 18] . The mortality rate of 50% among KDIGO-diagnosed AKI patients falls within the  
346 range (34 to 50%) reported in previous studies using the same AKI definition [1, 2, 18-20].  
347 While the inability to exclude readmitted patients may have introduced a degree of survival  
348 bias, the fact that readmission rates of less than 3% are seen in other large studies, suggests that  
349 the effect of this bias is likely to be relatively small [2, 18, 20].

350 Unsurprisingly, patients identified in the present study as having AKI—by either  
351 definition—were more likely to have chronic kidney disease, hypertension, and type 2 diabetes  
352 mellitus, be on an ACEi or ARB and generally have more medical complications during their  
353 admission than patients who did not develop AKI.

354           Interestingly, the admission eGFR, serum creatinine, and blood urea levels of the  
355 eKDIGO AKI population, and specifically those in the deKDIGO group, demonstrated  
356 significant impairment early in the admission, suggestive of community acquired AKI which  
357 would otherwise have gone unrecognized. While these patients had comparatively milder AKI  
358 and disease severity than patients in the KDIGO group, they nonetheless incurred significantly  
359 more morbidity and mortality than patients without AKI, even after adjusting for confounding  
360 factors. With regards to the increased prevalence of stage 1 AKI using the eKDIGO definition,  
361 there is growing evidence that even mild episodes of AKI may contribute to the development  
362 of chronic kidney disease [21-23]. This raises the important question of whether this new group  
363 of COVID-19 AKI patients would benefit from early management strategies to improve long  
364 term outcomes. Such measures are typically simple—management of fluid balance and  
365 removal of nephrotoxic medication for example—and readily implementable, even in resource-  
366 poor environments. A follow-up study, similar to the 0by25 feasibility study [7], may be  
367 warranted to explore such questions.

368           The earlier timing of peak AKI in the hospital stay and large proportion of stage 1 cases  
369 in the eKDIGO group suggests several possible etiologies. It may point to a pre-renal pattern  
370 of injury occurring in the setting of dehydration from gastrointestinal fluid losses, fever and  
371 anorexia—a finding supported by the identification of acute tubular injury in autopsy studies  
372 of patients with COVID-19 [24]. However, it is also possible that a proportion of these  
373 additional, milder, cases of AKI, captured by down trending sCr, are a consequence of early  
374 rehydration of patients with either previously normal kidney function or CKD. While the  
375 reduced admission eGFR of this group (median 54 ml/min/1.73 m<sup>2</sup>) makes the former less  
376 likely, pre-admission sCr measurements would be required to reliably identify the latter. It is  
377 reassuring that the proportion of reported CKD in the KDIGO and eKDIGO groups is very  
378 similar (19% and 18% respectively).

379 It is interesting to consider to what extent the large number of additional cases captured  
380 by the extended KDIGO definition are a COVID-specific consequence. While meta-analysis  
381 suggests global estimates of AKI incidence in adult hospitalized patients range between 3 and  
382 18% [25], there are no current estimates of global AKI incidence according to the eKDIGO  
383 definition. Moving forward, evaluation of the eKDIGO definition for the diagnosis of AKI in  
384 various hospital and community settings will be needed to shed light on whether our findings  
385 are particular to a COVID-affected population. In this context, it should be noted that  
386 approximately 20% of the analysis cohort had a diagnosis of COVID-19 made on clinical  
387 grounds, most likely due to testing shortages and high resource demands during surge phases  
388 of the pandemic. While this may have resulted in the potential inclusion of patients with other  
389 respiratory illnesses, given that other common respiratory illnesses were notably less prevalent  
390 during the pandemic [26, 27], it is plausible that a significant proportion of these clinically  
391 diagnosed patients did in fact have COVID-19.

392 This study has some key limitations. The exclusion of patients without two sCr  
393 measurements may have introduced a degree of selection bias. This could be responsible for  
394 the absence of expected geographical differences found between the eKDIGO and no AKI  
395 groups and may also have resulted in an underestimation of AKI cases by both definitions [6].  
396 The lack of a time-standardized collection of sCr across all sites also represents a limitation of  
397 the study. Patients having more frequent sCr collections may represent a population with more  
398 severe illness in whom AKI would be more readily detected, therefore affecting the overall  
399 AKI incidence rates and potentially generating a negative survival bias. Nevertheless, it is  
400 reassuring that the number of AKI cases are a small proportion of the total sCr collected on any  
401 given day (<18%) (S2 Fig), suggesting that the bias introduced by ad hoc sampling was low.  
402 The lack of standardization in sCr collection may have also affected the reporting of time to  
403 peak AKI, the magnitude of peak AKI reached in each individual patient and, in those

404 experiencing both a rise and fall in sCr during their admission, whether AKI was captured  
405 during the former phase (KDIGO) or the latter (eKDIGO).

406 With regards to the distinction between community and hospital acquired AKI, often a  
407 48 hr threshold is used to identify CA-AKI [28]. Such a definition would preclude many  
408 patients in this study who were identified as having AKI on day 3 of admission. It is worth  
409 noting that these patients would be identified as CA-AKI (or transient hospital-associated AKI)  
410 by the definition proposed by Warnock et al which integrates serum creatinine trajectories and  
411 doesn't adhere to the somewhat arbitrary 48hr cutoff [29]. Whether or not the additional cases  
412 of AKI captured by eKDIGO are truly reflective of CA-AKI will ultimately require studies that  
413 assess this population in a variety of community settings.

414 To our knowledge, this is the first study to systematically examine an extended KDIGO  
415 definition for the identification of AKI against the traditional KDIGO criteria in hospitalized  
416 COVID-19 patients. Our population is, as far as we know, the largest and only multinational  
417 cohort of patients with COVID-19 from all income country levels. The use of an extended  
418 KDIGO definition to diagnose AKI in this population resulted in a significantly higher  
419 incidence rate compared to traditional KDIGO criteria. These additional cases of AKI appear  
420 to be occurring in the community or early in the hospital admission and are associated with  
421 significantly worse outcomes, highlighting the importance of examining their role and long-  
422 term impact in future studies.

423

424

## 425 **References**

426

427 1. Chan L, Chaudhary K, Saha A, Chauhan K, Vaid A, Zhao S, et al. AKI in hospitalized  
428 patients with COVID-19. *J Am Soc Nephrol*. 2021;32(1):151-60.

- 429 2. Ng JH, Hirsch JS, Hazzan A, Wanchoo R, Shah HH, Malieckal DA, et al. Outcomes  
430 among patients hospitalized with COVID-19 and acute kidney injury. *Am J Kidney Dis.*  
431 2021;77(2):204-15. e1.
- 432 3. Cheng Y, Luo R, Wang K, Zhang M, Wang Z, Dong L, et al. Kidney disease is  
433 associated with in-hospital death of patients with COVID-19. *Kidney Int.* 2020;97(5):829-38.
- 434 4. Legrand M, Bell S, Forni L, Joannidis M, Koyner JL, Liu K, et al. Pathophysiology of  
435 COVID-19-associated acute kidney injury. *Nat Rev Nephrol.* 2021:1-14. doi: 10.1038/s41581-  
436 021-00452-0.
- 437 5. Kidney Disease: Improving Global Outcomes (KDIGO) Acute Kidney Injury  
438 Workgroup. KDIGO Clinical practice guideline for acute kidney injury. *Kidney Int Suppl*  
439 (2011). 2012;2(1):1-138.
- 440 6. Mehta RL, Burdmann EA, Cerdá J, Feehally J, Finkelstein F, García-García G, et al.  
441 Recognition and management of acute kidney injury in the International Society of Nephrology  
442 0by25 Global Snapshot: a multinational cross-sectional study. *Lancet.* 2016;387(10032):2017-  
443 25.
- 444 7. Macedo E, Hemmila U, Sharma SK, Claire-Del Granado R, Mzinganjira H, Burdmann  
445 EA, et al. Recognition and management of community-acquired acute kidney injury in low-  
446 resource settings in the ISN 0by25 trial: A multi-country feasibility study. *PLoS Med.*  
447 2021;18(1):e1003408.
- 448 8. Ostermann M, Bellomo R, Burdmann EA, Doi K, Endre ZH, Goldstein SL, et al.  
449 Controversies in acute kidney injury: conclusions from a Kidney Disease: Improving Global  
450 Outcomes (KDIGO) Conference. *Kidney Int.* 2020;98(2):294-309. doi:  
451 10.1016/j.kint.2020.04.020.
- 452 9. Siew ED, Matheny ME, Ikizler TA, Lewis JB, Miller RA, Waitman LR, et al.  
453 Commonly used surrogates for baseline renal function affect the classification and prognosis  
454 of acute kidney injury. *Kidney Int.* 2010;77(6):536-42.
- 455 10. Selby NM, Fluck RJ, Kolhe NV, Taal MW. International Criteria for Acute Kidney  
456 Injury: Advantages and Remaining Challenges. *PLoS Med.* 2016;13(9):e1002122. doi:  
457 10.1371/journal.pmed.1002122.
- 458 11. ISARIC. Clinical Characterisation Protocol (CCP). Available from:  
459 [https://isaric.org/research/covid-19-clinical-research-resources/clinical-characterisation-](https://isaric.org/research/covid-19-clinical-research-resources/clinical-characterisation-protocol-ccp/)  
460 [protocol-ccp/](https://isaric.org/research/covid-19-clinical-research-resources/clinical-characterisation-protocol-ccp/).

- 461 12. Wainstein M, Macdonald S, Claire-Del Granado R, Shrapnel S. ISARIC Partner  
462 Analysis Plan: Acute Kidney Injury in COVID-19 2020. Available from: [https://isaric.org/wp-](https://isaric.org/wp-content/uploads/2021/02/Acute-Kidney-Injury-in-COVID-19.pdf)  
463 [content/uploads/2021/02/Acute-Kidney-Injury-in-COVID-19.pdf](https://isaric.org/wp-content/uploads/2021/02/Acute-Kidney-Injury-in-COVID-19.pdf).
- 464 13. Wasserman L. All of statistics : a concise course in statistical inference. Chapter 10:  
465 Hypothesis testing and p-values. New York, NY: Springer New York : Imprint: Springer; 2004.
- 466 14. Aalen OO, Johansen S. An empirical transition matrix for non-homogeneous Markov  
467 chains based on censored observations. *Scand J Stat.* 1978;141-50.
- 468 15. Team RC. R: A Language and Environment for Statistical Computing. 2021.
- 469 16. Wickham H, Averick M, Bryan J, Chang W, McGowan LDA, François R, et al.  
470 Welcome to the tidyverse. *Journal of Open Source Software.* 2019;4(43):1686-.
- 471 17. Robbins-Juarez SY, Qian L, King KL, Stevens JS, Husain SA, Radhakrishnan J, et al.  
472 Outcomes for patients with COVID-19 and acute kidney injury: a systematic review and meta-  
473 Analysis. *Kidney Int Rep.* 2020;5(8):1149-60.
- 474 18. Hirsch JS, Ng JH, Ross DW, Sharma P, Shah HH, Barnett RL, et al. Acute kidney injury  
475 in patients hospitalized with COVID-19. *Kidney Int.* 2020;98(1):209-18.
- 476 19. Bowe B, Cai M, Xie Y, Gibson AK, Maddukuri G, Al-Aly Z. Acute kidney injury in a  
477 national cohort of hospitalized US veterans with COVID-19. *Clin J Am Soc Nephrol.*  
478 2021;16(1):14-25.
- 479 20. Sullivan MK, Lees JS, Drake TM, Docherty AB, Oates G, Hardwick HE, et al. Acute  
480 kidney injury in patients hospitalized with COVID-19 from the ISARIC WHO CCP-UK Study:  
481 a prospective, multicentre cohort study. *Nephrol Dial Transplant.* 2022;37(2):271-84.
- 482 21. Long TE, Helgason D, Helgadóttir S, Sigurdsson GH, Palsson R, Sigurdsson MI, et al.  
483 Mild Stage 1 post-operative acute kidney injury: association with chronic kidney disease and  
484 long-term survival. *Clin Kidney J.* 2021;14(1):237-44. doi: 10.1093/ckj/sfz197.
- 485 22. Horne KL, Packington R, Monaghan J, Reilly T, Selby NM. Three-year outcomes after  
486 acute kidney injury: results of a prospective parallel group cohort study. *BMJ Open.*  
487 2017;7(3):e015316. doi: 10.1136/bmjopen-2016-015316.
- 488 23. Bowe B, Xie Y, Xu E, Al-Aly Z. Kidney Outcomes in Long COVID. *J Am Soc*  
489 *Nephrol.* 2021. doi: 10.1681/asn.2021060734.
- 490 24. Rivero J, Merino-López M, Olmedo R, Garrido-Roldan R, Moguel B, Rojas G, et al.  
491 Association between Postmortem Kidney Biopsy Findings and Acute Kidney Injury from  
492 Patients with SARS-CoV-2 (COVID-19). *Clin J Am Soc Nephrol.* 2021;15(5):685-93.

- 493 25. Susantitaphong P, Cruz DN, Cerda J, Abulfaraj M, Alqahtani F, Koulouridis I, et al.  
494 World Incidence of AKI: A Meta-Analysis. Clin J Am Soc Nephrol. 2013;8(9):1482-93. doi:  
495 10.2215/cjn.00710113.
- 496 26. Public Health England. Surveillance of influenza and other seasonal respiratory viruses  
497 in the UK Winter 2020 to 2021. Available from:  
498 <https://www.gov.uk/government/statistics/annual-flu-reports>.
- 499 27. Centers for Disease Control and Prevention. 2020-21 Flu Season Summary. Available  
500 from: <https://www.cdc.gov/flu/season/past-flu-seasons.htm>.
- 501 28. Bell JS, James BD, Al-Chalabi S, Sykes L, Kalra PA, Green D. Community- versus  
502 hospital-acquired acute kidney injury in hospitalised COVID-19 patients. BMC Nephrol.  
503 2021;22(1). doi: 10.1186/s12882-021-02471-2.
- 504 29. Warnock DG, Powell TC, Siew ED, Donnelly JP, Wang HE, Mehta RL. Serum  
505 Creatinine Trajectories for Community- versus Hospital-Acquired Acute Kidney Injury.  
506 Nephron. 2016;134(3):177-82. doi: 10.1159/000447757.
- 507  
508

## 509 **Supplementary material**

510 **S1 Statement.** Study ethics approval

511 **S1 Table.** Definitions used for clinical COVID-19

512 **S2 Table.** Definition of comorbidities, complications and outcomes from the ISARIC case  
513 report forms (CRF)

514 **S3 Table.** Distribution of missingness information between eKDIGO and No AKI patients.

515 **S4 Table.** Logistic regression fitted to assess the association between eKDIGO AKI with in-  
516 hospital mortality without MICE imputation for variable missingness

517 **S1 Fig.** Breakdown of top contributing countries for patients diagnosed with AKI by KDIGO  
518 definition (A) and from deKDIGO group (B)

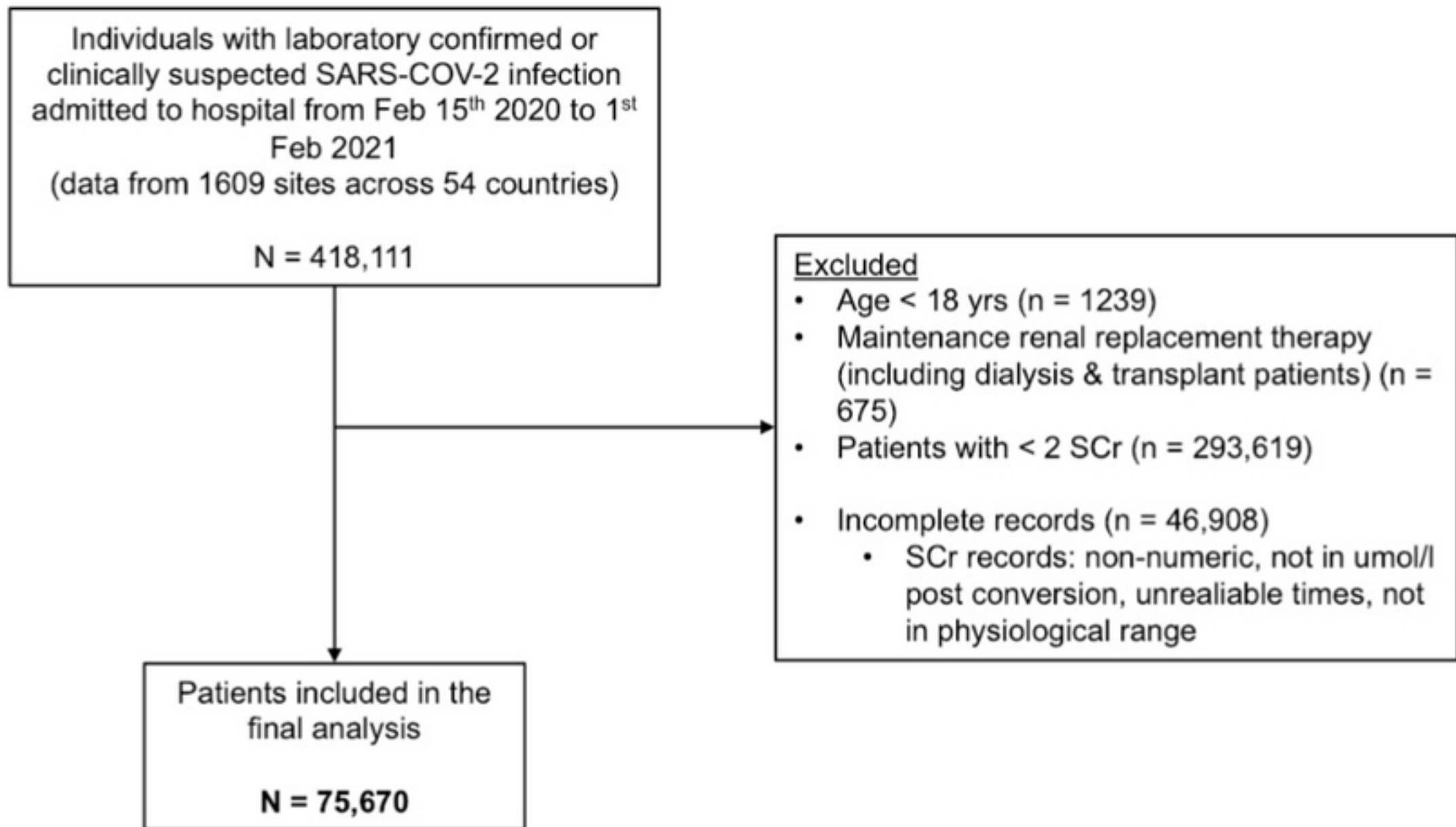
519 **S2 Fig.** Number of AKI cases by AKI definition (A = KDIGO and B = eKDIGO) as a  
520 proportion of total number of serum creatinines collected each day

521 **S5 Table.** STROBE (Strengthening the reporting of observational studies in epidemiology)

522 checklist

523





SARS-COV-2 = severe acute respiratory syndrome coronavirus 2  
sCr = serum creatinine

Fig 1

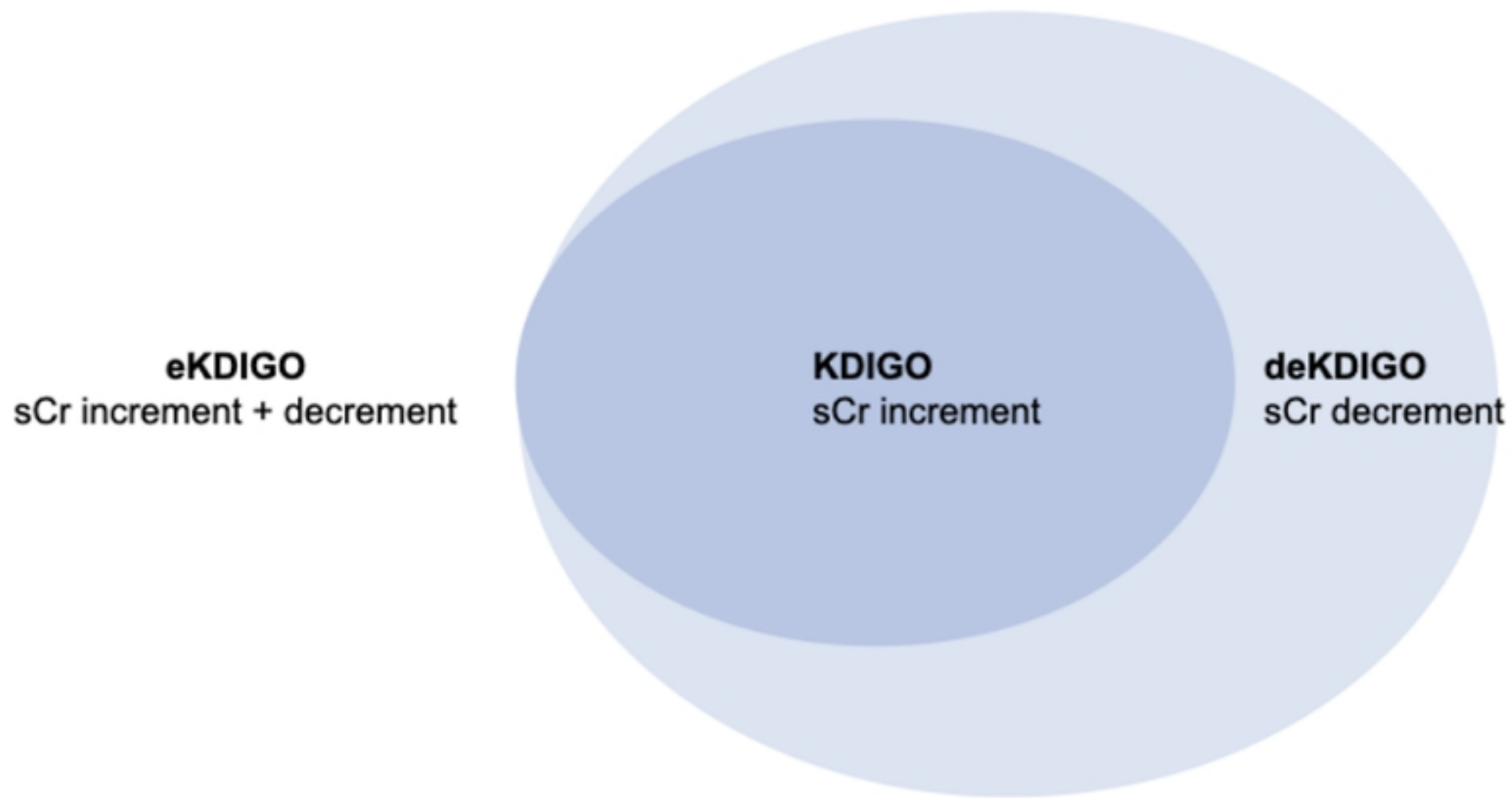
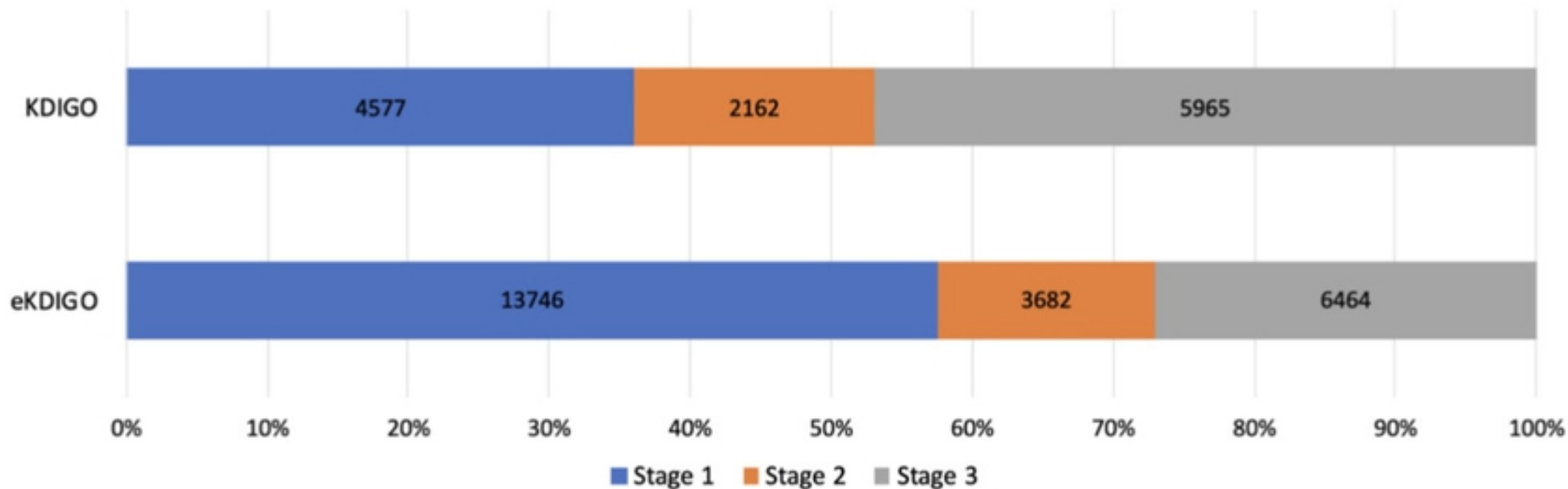


Fig 2

AKI Stages & RRT	KDIGO	eKDIGO
Stage 1 (%)	4577 (36)	13746 (58)
Stage 2 (%)	2162 (17)	3682 (15)
Stage 3 (%)*	5965 (47)	6464 (27)
RRT positive (%)**	4262 (33)	4262 (18)



\*Includes patients requiring RRT

\*\*Patients requiring RRT during the admission shown as absolute counts and as a proportion of all AKI by each definition.

Abbreviations: RRT = renal replacement therapy; AKI: Acute kidney injury

Fig 3

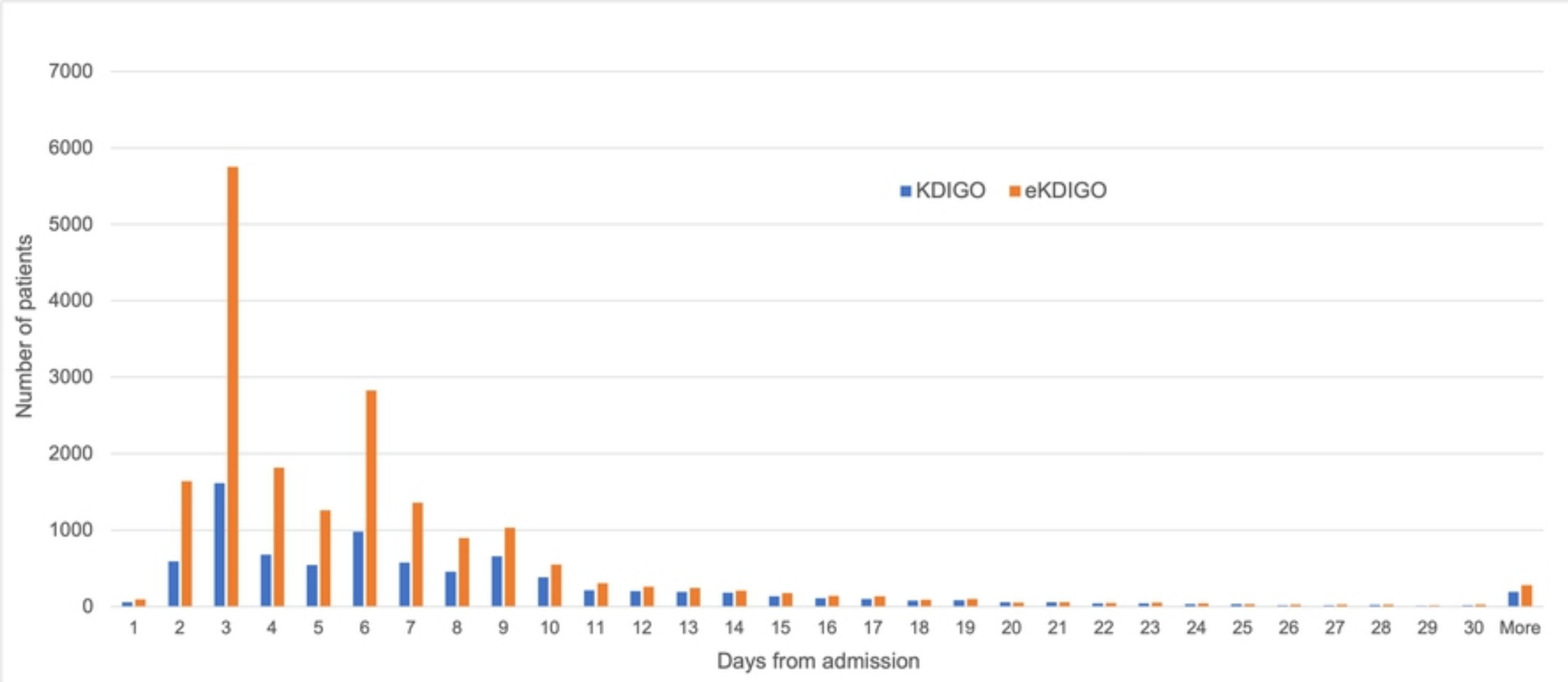


Fig 4

## 28 Day Survival, ekDIGO v noAKI

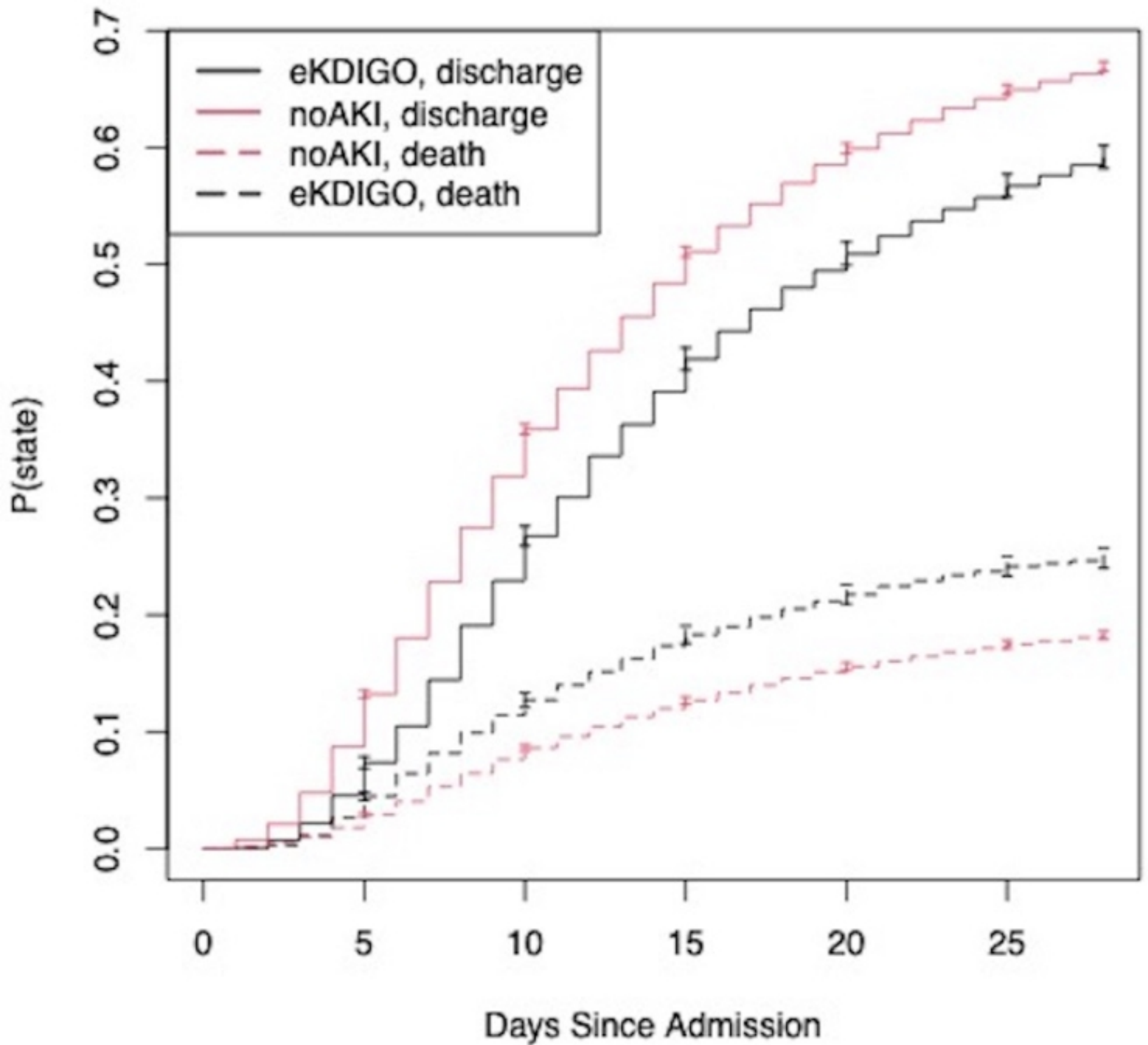


Fig 5